

*Quality People. Building Solutions.*

Comfort Systems USA (Arkansas), Inc.  
P.O. Box 16620  
Little Rock, AR 72231  
Phone 501-834-3320  
Fax 501-834-5416

**Date:** 10/18/2024

**Return Request:** 11/1/2024

**Project:** UAMS (CAMID)

**Supplier:** Airetech

**Manufacturer:** CaptiveAire

**Submittal:** Canopy Hoods

**Submittal Number:** 23 00 00-01

**Drawing # and Installation:** Mechanical Drawings

**ARCHITECT**

Clark Kenersen  
2020 Baltimore Avenue, Suite 300  
Kansas City, MO 64108  
816-474-8237

**ENGINEER**

Clark Kenersen  
2020 Baltimore Avenue, Suite 300  
Kansas City, MO 64108  
816-474-8237

**GENERAL CONTRACTOR**

CDI Contractors  
3000 Cantrell Rd.  
Little Rock, AR 72202  
501-666-4300

**MECHANICAL SUBCONTRACTOR**

Comfort Systems USA (Arkansas), Inc.  
9924 Landers Rd.  
N. Little Rock, AR 72117  
501-834-3320

Notes:

**\*Plan Page M8.04**

**CSUSA PROJECT NO.**

**22-6069**

**[sean@comfortar.com](mailto:sean@comfortar.com)**

9924 Landers Rd.  
No. Little Rock, AR 72117



## SUBMITTAL DATA

EQUIPMENT: CaptiveAire Canopy Hoods

TAGS: CH-1 thru 4

PROJECT: UAMS CAMID  
325 Jack Stephens Dr.  
LOCATION: Little Rock, Arkansas

ENGINEER: James R. Beecher

CONTRACTOR: The logo for Comfort Systems USA Arkansas features the words 'COMFORT SYSTEMS' in a bold, black, sans-serif font, followed by 'USA' in a larger, bold, black, sans-serif font with a red and blue wave-like element. Below this, the word 'ARKANSAS' is written in a smaller, black, sans-serif font.

DATE: 9/3/2024

SUBMITTED BY: Forrest Moseley  
forrest@airetechcorp.com

FOR QUESTIONS, CALL THE  
Arkansas Mechanical  
REGION 146  
PHONE: (501) 500 - 5450  
EMAIL: reg146@captiveaire.com

**HOOD INFORMATION - JOB#6920228**

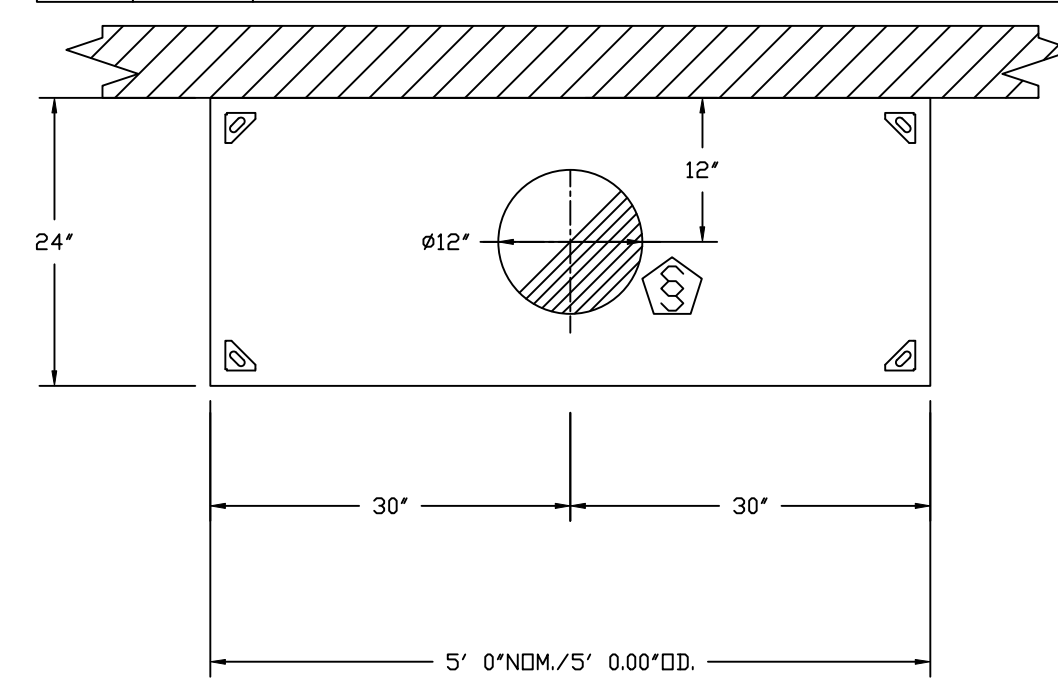
HOOD NO	TAG	MODEL	MANUFACTURER	LENGTH	MAX COOKING TEMP	TYPE	APPLIANCE DUTY	DESIGN CFM/FT	TOTAL EXH CFM	EXHAUST PLENUM RISER(S)				HOOD CONSTRUCTION	HOOD CONFIG		
										WIDTH	LENG	HEIGHT	DIA		CFM	VEL	SP
1	CH-1	2424 VHB-G	CAPTIVEAIRE	4' 0"	700 DEG	II	N/A	100	400	4'	8"	400	1146	-0.061'	430 SS 100%	ALONE	ALONE
2	CH-2	2424 VHB-G	CAPTIVEAIRE	4' 0"	700 DEG	II	N/A	100	400	4'	8"	400	1146	-0.061'	430 SS 100%	ALONE	ALONE
3	CH-3	2424 VHB-G	CAPTIVEAIRE	5' 0"	700 DEG	II	N/A	100	500	4'	12"	500	637	-0.038'	430 SS 100%	ALONE	ALONE
4	CH-4	2424 VHB-G	CAPTIVEAIRE	5' 0"	700 DEG	II	N/A	100	500	4'	12"	500	637	-0.038'	430 SS 100%	ALONE	ALONE

**HOOD INFORMATION**

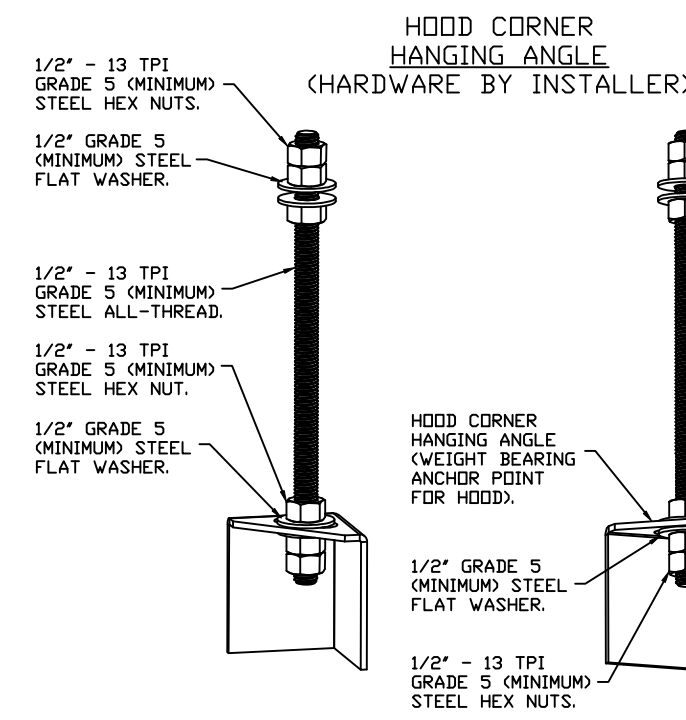
HOOD NO	TAG	FILTER(S)			LIGHT(S)			UTILITY CABINET(S)				FIRE SYSTEM PIPING	HOOD HANGING WEIGHT	
		TYPE	QTY	HEIGHT	EFFICIENCY @ 7 MICRONS	QTY	TYPE	WIRE GUARD	LOCATION	SIZE	FIRE SYSTEM			SIZE
1	CH-1					0							NO	109 LBS
2	CH-2					0							NO	109 LBS
3	CH-3					0							NO	123 LBS
4	CH-4					0							NO	123 LBS

**HOOD OPTIONS**

HOOD NO	TAG	OPTION
1	CH-1	FIELD WRAPPER 8.00" HIGH FRONT, LEFT, RIGHT.
2	CH-2	FIELD WRAPPER 8.00" HIGH FRONT, LEFT, RIGHT.
3	CH-3	FIELD WRAPPER 8.00" HIGH FRONT, LEFT, RIGHT.
4	CH-4	FIELD WRAPPER 8.00" HIGH FRONT, LEFT, RIGHT.



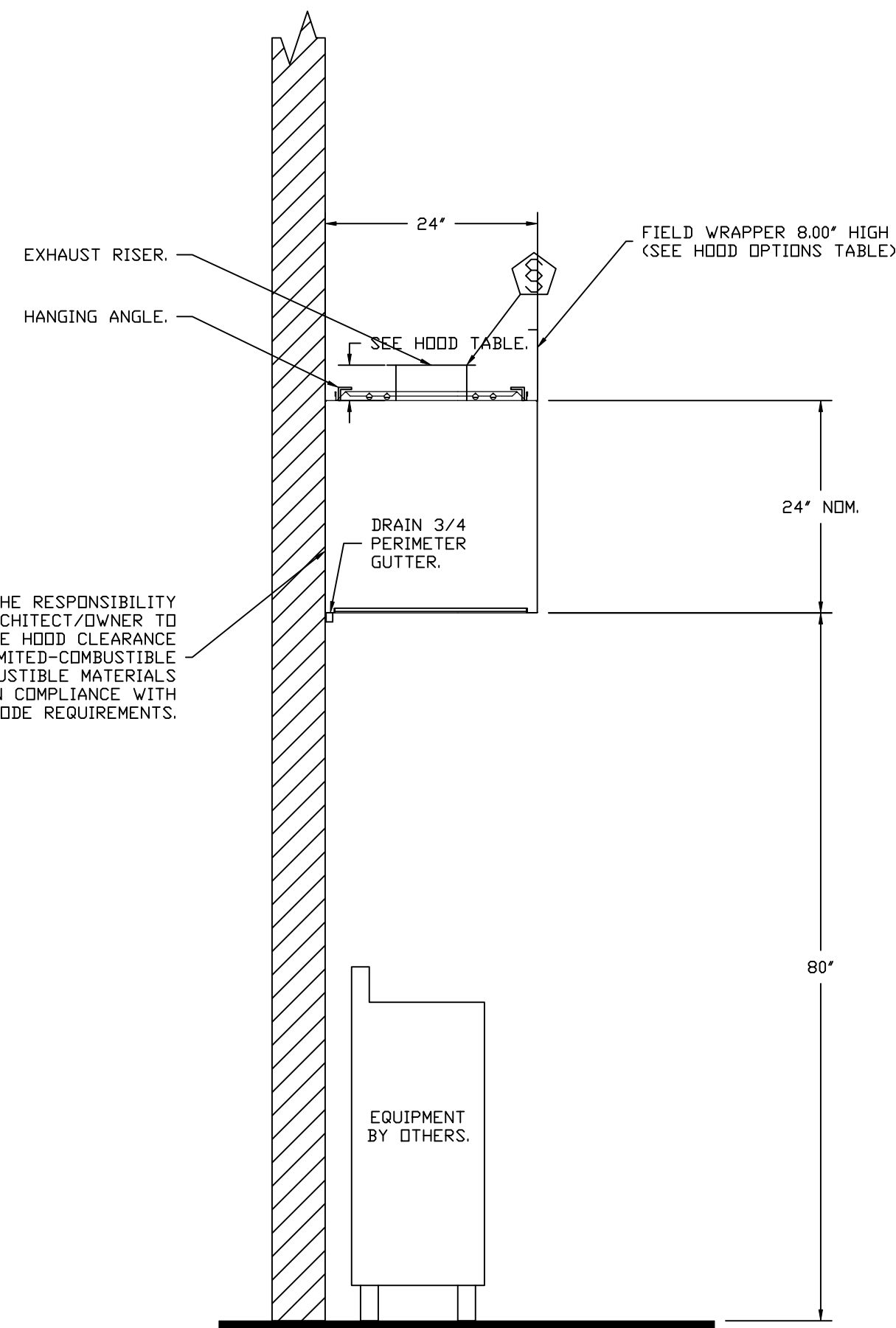
PLAN VIEW - HOOD #4 (CH-4)  
5' 0.00" LONG 2424VHB-G



**ASSEMBLY INSTRUCTIONS**

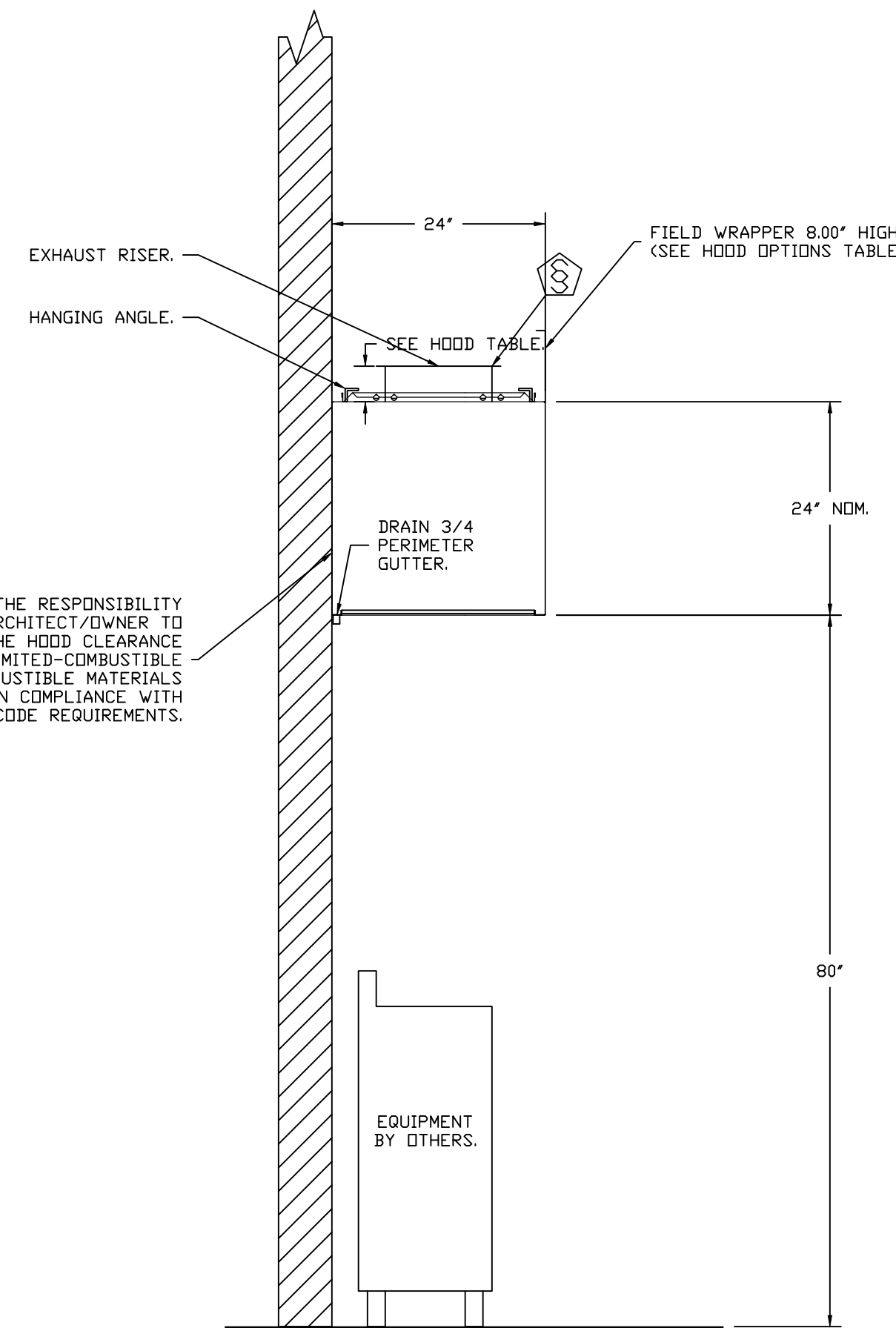
HANGING ANGLE MUST BE SUPPORTED WITH 1/2" - 13 TPI GRADE 5 (MINIMUM) ALL-THREAD. SANDWICH HANGING ANGLES AND CEILING ANCHOR POINTS WITH 1/2" GRADE 5 (MINIMUM) STEEL FLAT WASHERS AND 1/2" - 13 TPI GRADE 5 (MINIMUM) HEX NUTS AS SHOWN. MUST USE DOUBLED HEX NUT CONFIGURATION BENEATH HOOD HANGING ANGLES AND ABOVE CEILING ANCHORS. MAINTAIN 1/4" OF EXPOSED THREADS BENEATH BOTTOM HEX NUT. TORQUE ALL HEX NUTS TO 57 FT-LBS.

IT IS THE RESPONSIBILITY OF THE ARCHITECT/DOWNER TO ENSURE THAT THE HOOD CLEARANCE FROM LIMITED-COMBUSTIBLE AND COMBUSTIBLE MATERIALS IS IN COMPLIANCE WITH LOCAL CODE REQUIREMENTS.



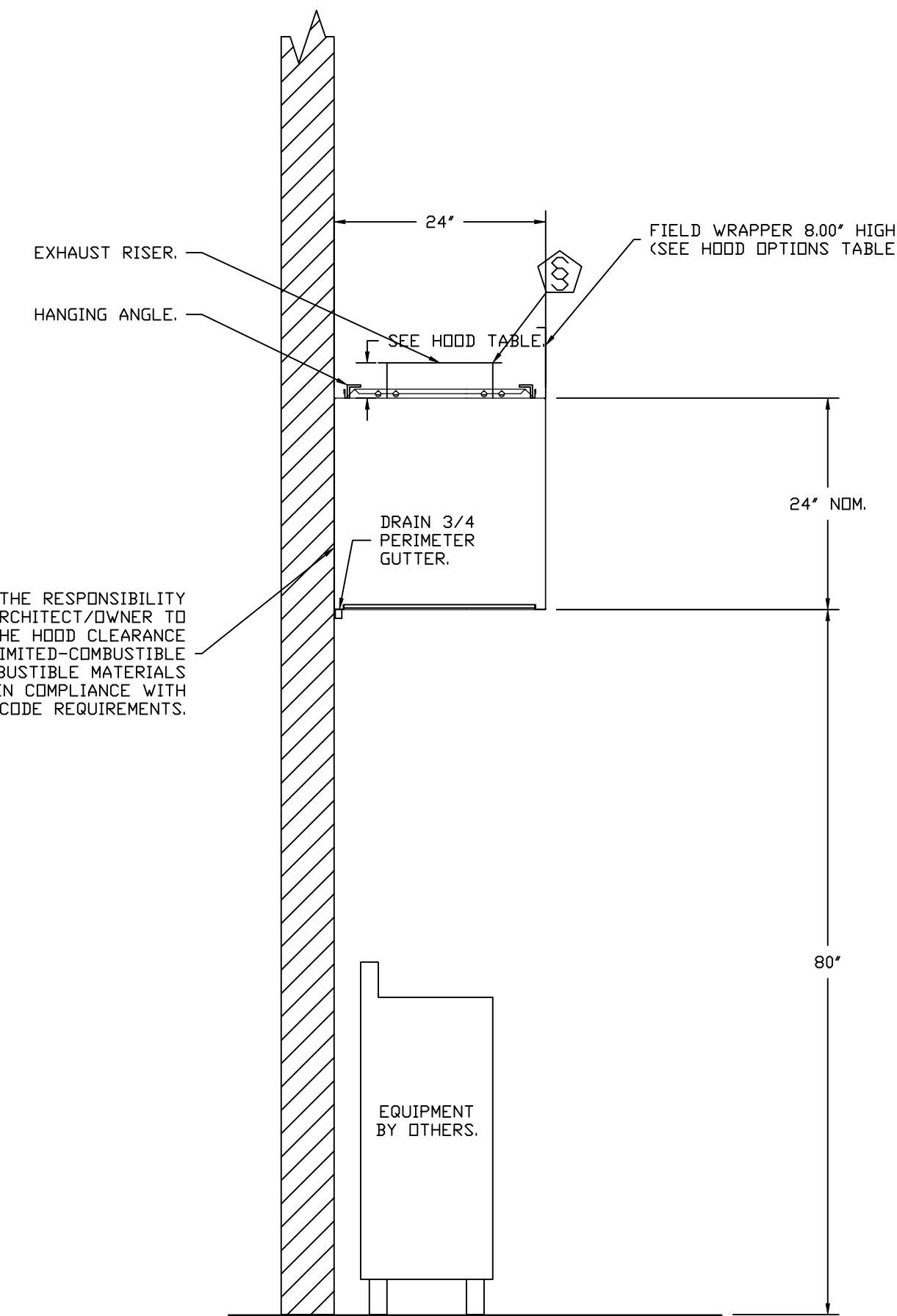
SECTION VIEW - MODEL 2424VHB-G  
HOOD - #1 (CH-1), #2 (CH-2)

IT IS THE RESPONSIBILITY OF THE ARCHITECT/DOWNER TO ENSURE THAT THE HOOD CLEARANCE FROM LIMITED-COMBUSTIBLE AND COMBUSTIBLE MATERIALS IS IN COMPLIANCE WITH LOCAL CODE REQUIREMENTS.

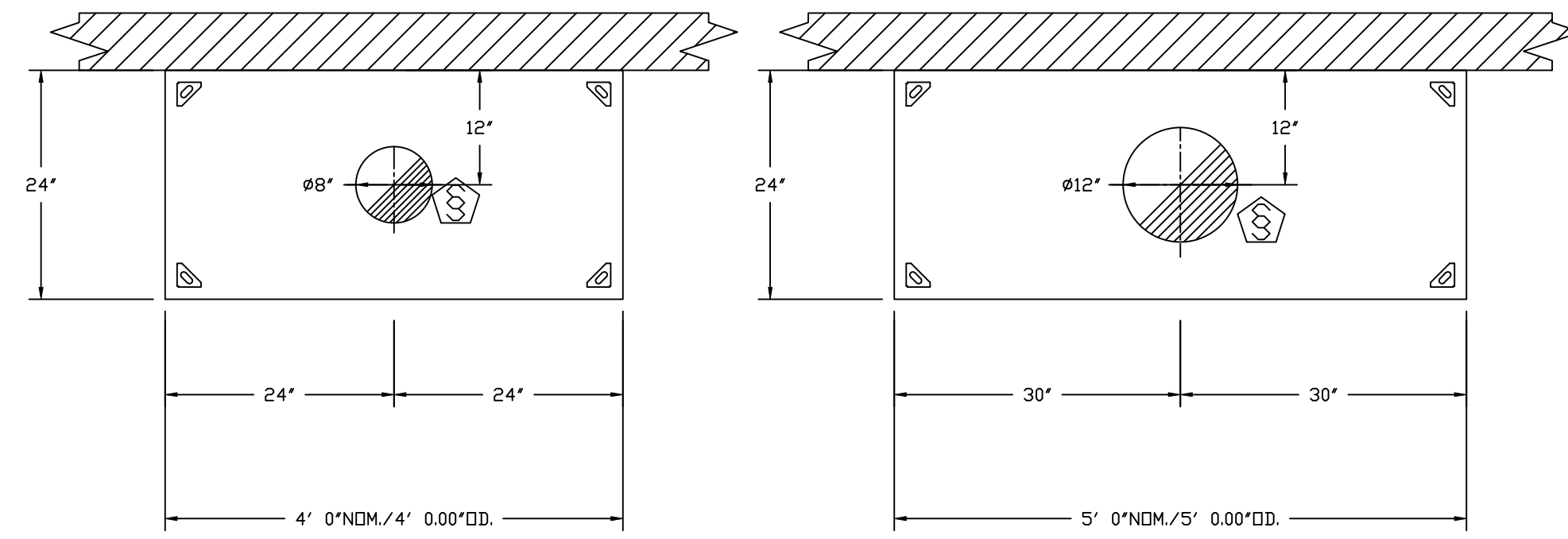


SECTION VIEW - MODEL 2424VHB-G  
HOOD - #3 (CH-3)

IT IS THE RESPONSIBILITY OF THE ARCHITECT/DOWNER TO ENSURE THAT THE HOOD CLEARANCE FROM LIMITED-COMBUSTIBLE AND COMBUSTIBLE MATERIALS IS IN COMPLIANCE WITH LOCAL CODE REQUIREMENTS.

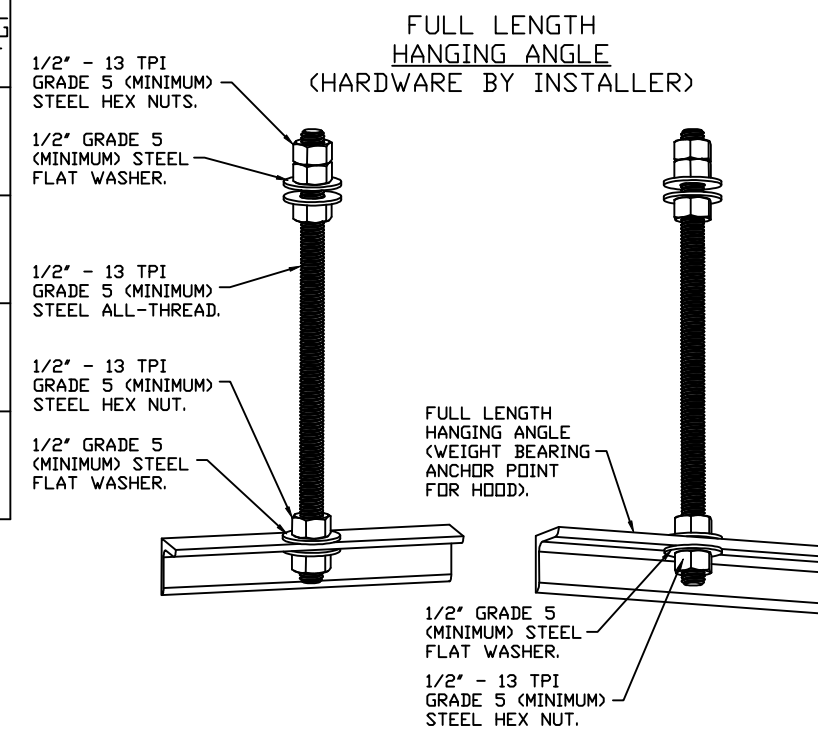


SECTION VIEW - MODEL 2424VHB-G  
HOOD - #4 (CH-4)



PLAN VIEW - HOOD #1 (CH-1), #2 (CH-2)  
4' 0.00" LONG 2424VHB-G

PLAN VIEW - HOOD #3 (CH-3)  
5' 0.00" LONG 2424VHB-G



**ASSEMBLY INSTRUCTIONS**

HANGING ANGLE MUST BE SUPPORTED WITH 1/2" - 13 TPI GRADE 5 (MINIMUM) ALL-THREAD. SANDWICH HANGING ANGLES AND CEILING ANCHOR POINTS WITH 1/2" GRADE 5 (MINIMUM) STEEL FLAT WASHERS AND 1/2" - 13 TPI GRADE 5 (MINIMUM) HEX NUTS AS SHOWN. MUST USE DOUBLED HEX NUT CONFIGURATION ABOVE CEILING ANCHORS. SINGLE HEX NUT BENEATH HANGING ANGLE IS ACCEPTABLE FOR FULL LENGTH HANGING ANGLES. MAINTAIN 1/4" OF EXPOSED THREADS BENEATH BOTTOM HEX NUT. TORQUE ALL HEX NUTS TO 57 FT-LBS.

**REVISIONS**

DESCRIPTION	DATE

**CAPTIVEAIRE**  
Arkansas Mechanical  
www.captiveaire.com  
140 Southwinds Rd. Suite 133, Farmington, AR, 72730 PHONE: (501) 500 - 5450 FAX: 5017106670 EMAIL: reg146@captiveaire.com

UAMS CAMID  
325 Jack Stephens Drive,  
Little Rock, AR, 72205

DATE: 9/4/2024  
DWG.#: 6920228  
DRAWN BY: BDB 146  
SCALE: 3/4" = 1'-0"  
MASTER DRAWING

**SHEET NO.**  
1