



SUBMITTAL DATA

EQUIPMENT: LG Split System Heat Pump

TAGS: DS-3

PROJECT: Goodwill Retail Center
Chenal Parkway at Kirk Road
LOCATION: Little Rock, Arkansas

ENGINEER: The logo for EECI Energy Engineering Consultants, Inc. features a stylized green 'E' and 'C' intertwined, with the text 'EECI ENERGY ENGINEERING CONSULTANTS, INC.' to the right.

CONTRACTOR: The logo for Comfort Systems USA Arkansas features the text 'COMFORT SYSTEMS USA' in a bold, sans-serif font, with 'USA' in a larger, stylized font. Below this, the word 'ARKANSAS' is written in a smaller, spaced-out, sans-serif font.

DATE: 1/28/2025

SUBMITTED BY: Forrest Moseley
forrest@airetechcorp.com

Job Name/Location:

Tag No.:

Date:

| | | |
|------|----------|------------|
| For: | File | Resubmit |
| | Approval | Other_____ |

PO No.:

Architect: GC:

Engr: Mech:

Rep: (Company) (Project Manager)



KSUJA181A
Single Zone Mid Static Ducted LGRED°
 Outdoor Unit (ODU) - KUSXA181A, Indoor Unit (IDU) - KNUJB181A

Performance:

Cooling:

| | |
|---|-------------------------|
| Cooling Capacity (Min~Rated~Max, Btu/h) | 7,200 ~ 18,000 ~ 22,000 |
| SEER2 | 17.50 |
| EER2 | 12.40 |

SEER - Seasonal Energy Efficiency Ratio EER - Energy Efficiency Ratio

Heating:

| | |
|---|-------------------------|
| Heating Capacity (Min~Rated~Max, Btu/h) | 6,800 ~ 20,000 ~ 24,000 |
| HSPF2 | 9.2 |
| Max. Heating @ Indoor 70°F DB (Btu/h) | |
| Outdoor 17°F WB | 22,200 |
| Outdoor 5°F WB | 20,000 |
| Outdoor -4°F WB | 17,500 |
| Outdoor -13°F WB | 15,200 |

HSPF - Heating Seasonal Performance Factor Heating Nominal Test Conditions:
 Cooling Nominal Test Conditions: Indoor: 70°F DB / 60°F WB
 Indoor: 80°F DB / 67°F WB Outdoor: 47°F DB / 43°F WB
 Outdoor: 95°F DB / 75°F WB

Electrical:

| | |
|---|--------------------|
| Power Supply (V/Hz/Ø) | 208-230/60/1 |
| MOP (A) | 30 |
| MCA (A) | 19.1 |
| Cooling / Heating Rated Amps (A) | 17.3 |
| Compressor (A) | 14 |
| Fan Motor (IDU + ODU) (A) | 1.7 + 1.6 |
| Cooling Power Input (Min~Rated~Max, kW) | 0.50 ~ 1.45 ~ 2.80 |
| Heating Power Input (Min~Rated~Max, kW) | 0.50 ~ 1.58 ~ 2.54 |
| Locked Rotor Amps (A) | 11.5 |

MOP - Maximum Overcurrent Protection MCA - Minimum Circuit Ampacity

Piping:

| | |
|--|------------|
| Installed Liquid Pipe (in., O.D.) | 3/8 |
| Installed Vapor Pipe (in., O.D.) | 5/8 |
| IDU Liquid Connection (in., O.D.) | 3/8 |
| IDU Vapor Connection (in., O.D.) | 5/8 |
| Additional Refrigerant (oz./ft.) | 0.38 |
| Min. / Max. Pipe Length (ft.) ² | 16.4 / 164 |
| Piping Length (no add'l refriger., ft.) | 24.6 |
| Max. Elevation (ft.) | 98.4 |

Features:

- Inverter (Variable Speed Compressor)
- Internal Condensate Pump
- Jet Cool / Jet Heat
- Auto Restart
- Auto Changeover
- Night Quiet Operation
- Optional Wi-Fi Control
- Drain Pan Heater
- Direct / Indirect Wind
- Swirl Wind
- Smart Mode
- Refresh Mode
- Aux Heater
- Relay Kit

Optional Accessories:

- PI-485 - PMNFP14A1
- Auxiliary Heater Kit - PRARH1
- Wi-Fi Module - PWFMD200
- Single Port Shutoff Valve - PRHPZ010A
- Vertical Install Kit - ABDAMA0
- Drain Pan Heater - PQSH1202
- Low Ambient Wind Baffle (Cooling operation to -4°F) - ZLABGP01A
- Filter Box - ZFBXMA01A

Controller Options:

- MultiSITE™ CRC Controllers
- Simple Remote Controller
- Standard III Remote Controllers
- Remote Temperature Button Sensor
- Dry Contacts
- AC Smart 5 Central Controller
- LonWorks® Gateway
- MultiSITE Comm. Mgr.
- ACP 5 BACnet™ Gateway

For a complete list of available accessories, contact your LG representative.

For continual product development, LG reserves the right to change specifications without notice.

© LG Electronics U.S.A., Inc., Englewood Cliffs, NJ. All rights reserved. "LG Life's Good" is a registered trademark of LG Corp. /www.lghvac.com

Operating Range:

Outdoor Unit:

| | |
|-----------------|-----------|
| Cooling (°F DB) | 5 ~ 118 |
| Heating (°F WB) | -13 ~ +64 |

Indoor Unit:

| | |
|-----------------|---------|
| Cooling (°F WB) | 57 ~ 77 |
| Heating (°F DB) | 59 ~ 81 |

System Data:

| | |
|--|---------------|
| Refrigerant Type | R32 |
| Refrigerant Control | EEV |
| Refrigerant Charge (lbs.) | 4.19 |
| ODU Sound Pressure (Cooling / Heating) (±1 dB[A]) ³ | 51 / 52 |
| IDU Sound Pressure (H/M/L) (±1 dB[A]) ³ | 36 / 32 / 29 |
| ODU Net / Shipping Weight (lbs.) | 141.8 / 160.1 |
| IDU Net / Shipping Weight (lbs.) | 61.5 / 71.7 |
| Heat Exchanger Coating | GoldFin™ |

Fan:

| | |
|--|---------------------------------------|
| ODU Type | Propeller |
| IDU Type | Sirocco |
| Fan Speeds (Fan/Cool/Heat) | 3 / 3 / 3 |
| Quantity (ODU + IDU) | 1 + 1 |
| Motor/Drive | Brushless Digitally Controlled/Direct |
| Maximum ODU Air Volume (CFM) | 2,048 |
| IDU Air Flow (CFM Max. H/M/L) | 635.7 / 529.7 / 423.8 |
| Default ESP (in wg) | 0.24 |
| Minimum ESP/Fan Setting Value ⁴ | 0.1 / 82 |
| Maximum ESP/Fan Setting Value ⁴ | 0.59 / 156 |
| Dehumidification (pts./hr.) | 2.75 |

Notes:

- Acceptable operating voltage: 187V-253V.
- Piping lengths are equivalent.
- Sound Pressure levels are tested in an anechoic chamber under ISO Standard 3745.
- Maximum static pressure may result in reduced airflow (CFM).
- All power supply wiring to the outdoor unit is field supplied, solid or stranded. The power wiring and the communication wiring from the outdoor unit to the indoor unit is field supplied and must be stranded, shielded or unshielded (if shielded, it must be grounded to the chassis of the outdoor unit only). All wiring must comply with applicable local and national codes.
 - a. Power Supply Wiring to ODU: (No. x AWG): 3 x 12 for 9k, 12k, 18k, and 24k; 3 x 10 for 30k, 36k, 42k, and 48k.
 - b. Power Wiring and Communication Wiring from Outdoor Unit to Indoor Unit: (No. x AWG) 3 x 18 / 2 x 18.
- See Engineering Manual for sensible and latent capacities.
- Power wiring cable size must comply with the applicable local and national code.
- The indoor unit comes with a dry helium charge.
- This data is rated 0 ft. above sea level, with 24.6 ft. of refrigerant line and a 0 ft. level difference between outdoor and indoor units.
- Must follow installation instructions in the applicable LG installation manual.
- If the optional low ambient wind baffle is used, one wind baffle is required for each ODU fan.

BACnet® is a registered trademark of ASHRAE. LonWorks® is a trademark of Echelon Corporation.



Proper sizing and installation of equipment is critical to achieve optimal performance. Split system air conditioners and heat pumps (excluding ductless systems) must be matched with appropriate coil components to meet ENERGY STAR® criteria. Ask your contractor for details or visit www.energystar.gov. (ENERGY STAR and the ENERGY STAR mark are registered trademarks owned by the U.S. Environmental Protection Agency.)

KSUJA181A

Single Zone Mid Static Ducted LGRED[®]

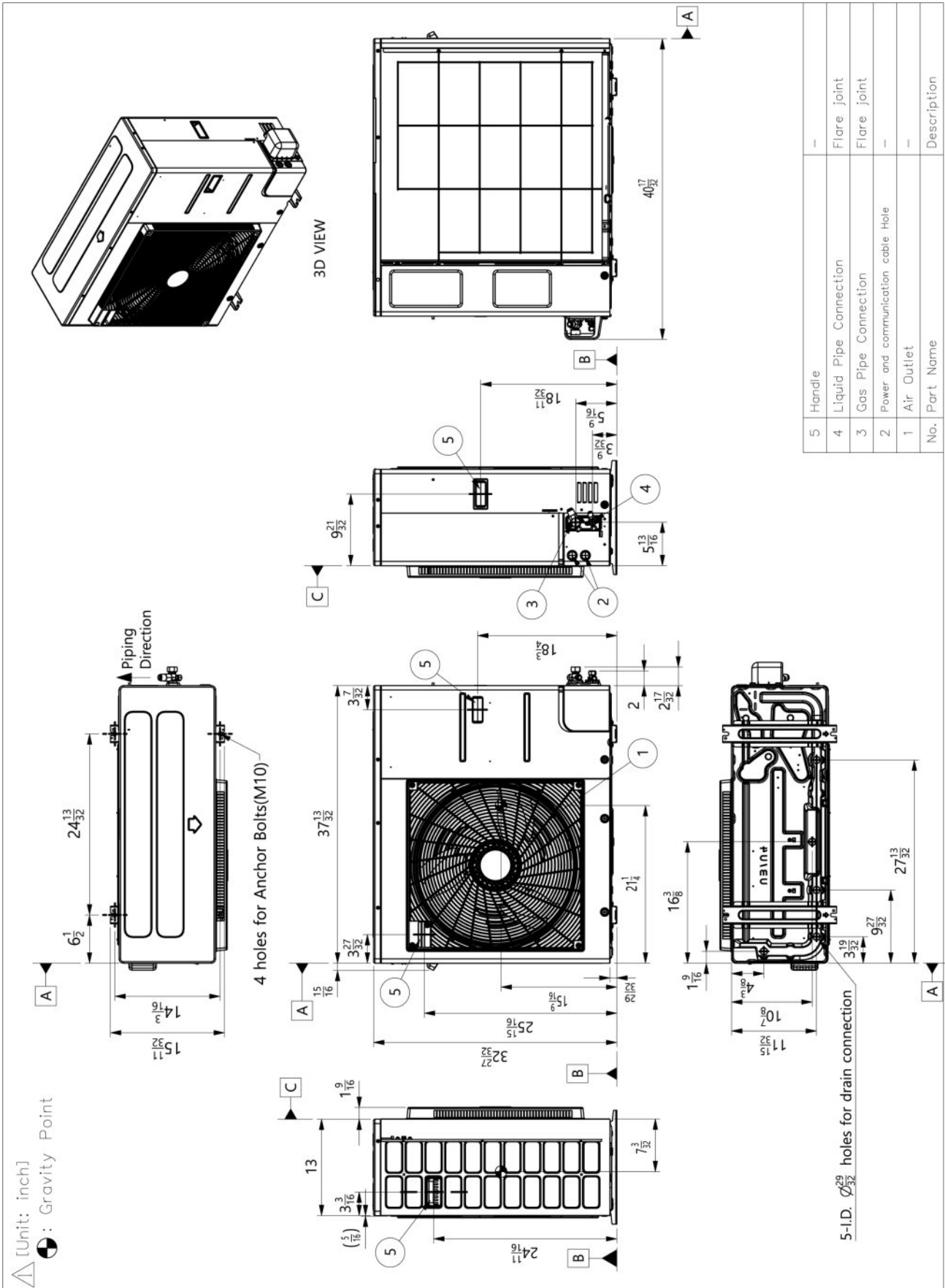
Outdoor Unit (ODU) - KUSXA181A, Indoor Unit (IDU) - KNUJB181A



Tag No.: _____

Date: _____

PO No.: _____



Job Name/Location: _____

KSUJA181A

Single Zone Mid Static Ducted LGRED°

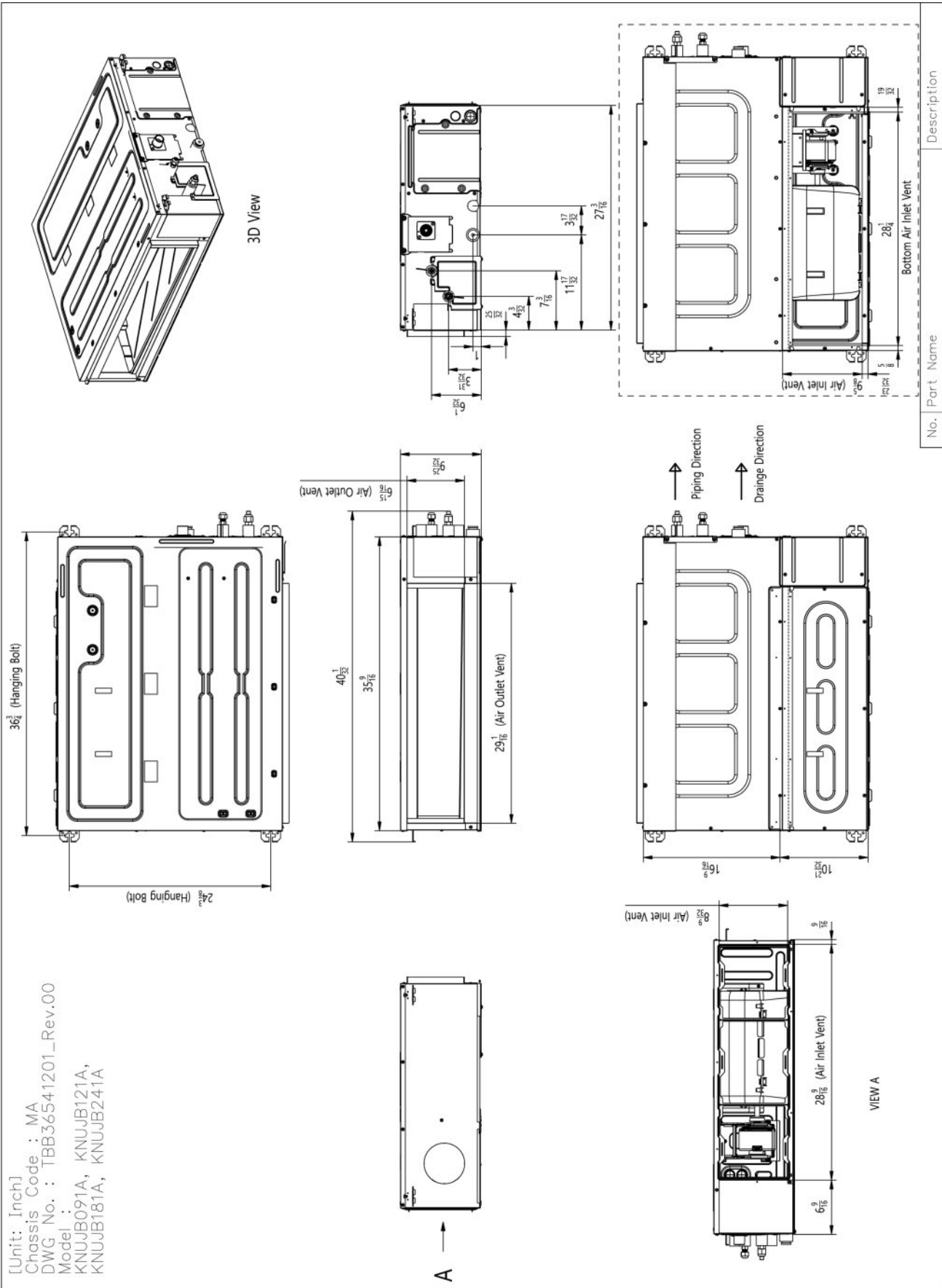
Outdoor Unit (ODU) - KUSXA181A, Indoor Unit (IDU) - KNUJB181A



Tag No.: _____

Date: _____

PO No.: _____



Job Name/Location:

Tag #:

Date:

For: File Resubmit

PO No.:

Approval Other

Architect:

GC:

Engr:

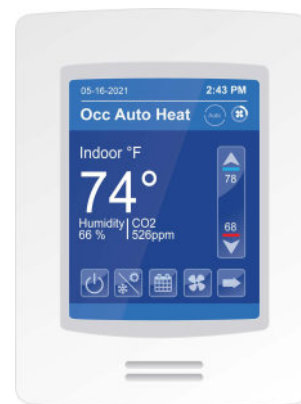
Mech:

Rep:

(Company)

(Project Manager)

PREMTBVC2 MultiSITE CRC2 Remote Controller



Electrical:

Power Supply 12VDC power from indoor unit

Surrounding Conditions:

| | |
|-------------|---------------------------|
| Temperature | |
| Operating | 32-122 °F |
| Storage | -22-122 °F |
| Humidity | |
| Operating | 5-95% RH (non-condensing) |
| Storage | 0-95% RH (non-condensing) |

Features:

- Customizable color digital touch screen interface with Multilanguage support
- BACnet® Wireless IP (optional)
- ZigBee® Pro Wireless capability (optional)
- 2 universal inputs, 1 universal output, and 1 digital output
- Role based configuration (password protected)
- Lua scripting
- Function code settings
- Function code search tool
- Date and time display
- Room temperature display (-9 °F ~ +9 °F adjustable)
- Humidity display (-15% ~ +15% adjustable)
- Operation - On/Off
- Mode - Auto/Cool/Dry/Heat/Fan Only
- Occupied cooling and heating temperature setpoints
- Unoccupied cooling and heating temperature setpoints
- 7 day scheduling with mode
- Fan speed - Auto/Low/Med/High/Power
- Discharge vanes - Auto/Swing/Fixed
- Static pressure installer setting

Optional Accessories (sold separately):

- PZCWRCG3 - Group Control Cable Kit
- PZCWRC1 - Extension Cable (for IDUs without terminal blocks)
- ZVRCZPWC2 - ZigBee® Pro Wireless Module³
- ZVRCZDWC1 - Wireless Door Window Contact³
- ZVRCZMTH1 - Wireless Ceiling Mounted Occupancy, Temperature and Humidity Sensor³
- SEDCO2G5045 - Wireless CO2, Temperature & Humidity Sensor³
- ZVRCZTRH1 - Wireless Temperature & Humidity Sensor³
- ZVRCZWLS1- Wireless Water Leak Sensor³
- VCM8002V504 - Wi-Fi Module (BACnet Wireless IP)

Notes:

1. Available functions/features may differ based on connected system.
2. Communication cable can be extended to a maximum of 164 feet.
3. Up to 20 ZigBee® sensors can be connected to the MultiSITE CRC2 Remote Controller.
4. Must follow installation instructions in the applicable LG installation manual.

Connectivity:

LG Communications 1 Channel/RS-485 V-Net
 BACnet® MS/TP
 BACnet® wireless IP (optional)
 Zigbee® Pro wireless mesh network (P) (optional)

Communications Cabling Specifications (V-Net):

Type 3 conductor, stranded, twisted, unshielded
 Size AWG 22-3
 Length² up to 164 ft

AWG - American Wire Gage

Unit Data:

Dimensions 4.72" H x 3.39" W x 1.06" D
 Maximum Number of Indoor Units (per controller) 16

Input / Output Specifications:

Input (Universal inputs T16, T17)

- Temperature: Type 10K Thermistor
- Digital: Dry-contact closure
- Analog: Modulating 0-10Vdc.

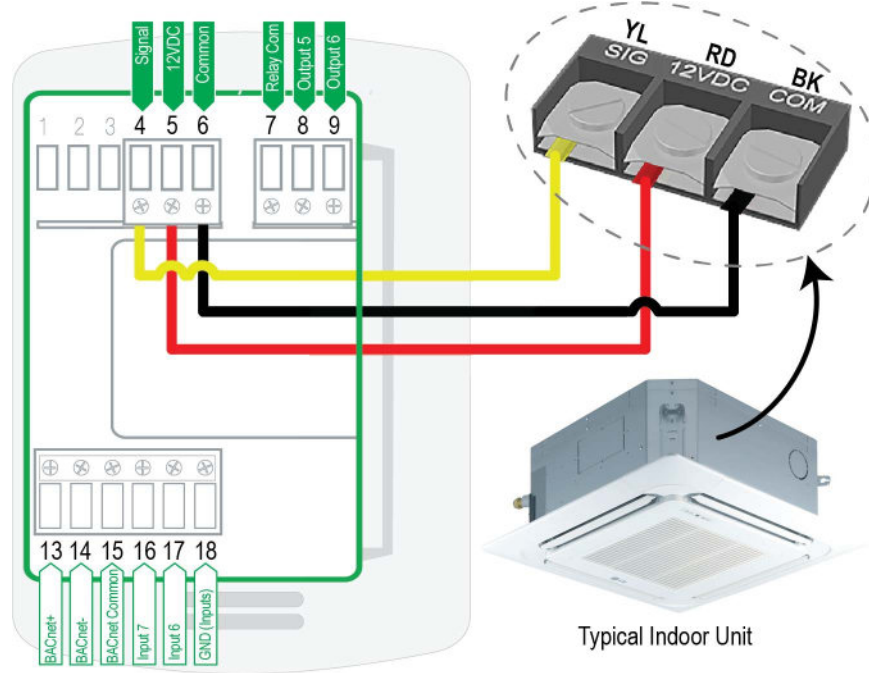
Output (Universal output T9)

- Digital: Electric relay closure rated at 12Vac or 12Vdc +/- 15%, 1.0A, 3.0 A inrush
- Analog: 0-10 Vdc @ 5mA max into a 2KΩ resistive load
- Output (digital output T8)
- Digital: Electric relay closure rated at 12Vac or 12Vdc +/- 15%, 1.0A, 3.0 A inrush

PREMTBVC2
MultiSITE CRC2 Remote Controller



Tag #: _____
Date: _____
PO No.: _____



| Terminal | Function |
|-------------|------------------------------|
| Terminal 1 | Not used |
| Terminal 2 | Not used |
| Terminal 3 | Not used |
| Terminal 4 | Signal Wire |
| Terminal 5 | 12VDC |
| Terminal 6 | Common |
| Terminal 7 | Relay Common Outputs 5 and 6 |
| Terminal 8 | Binary Output 5 |
| Terminal 9 | Universal Output |
| Terminal 13 | BACnet + |
| Terminal 14 | BACnet - |
| Terminal 15 | BACnet MS/TP Common |
| Terminal 16 | Universal Input 7 |
| Terminal 17 | Universal Input 6 |
| Terminal 18 | Input/Output Ground |

Job Name/Location:

PREMTBVC2
MultiSITE CRC2 Remote Controller

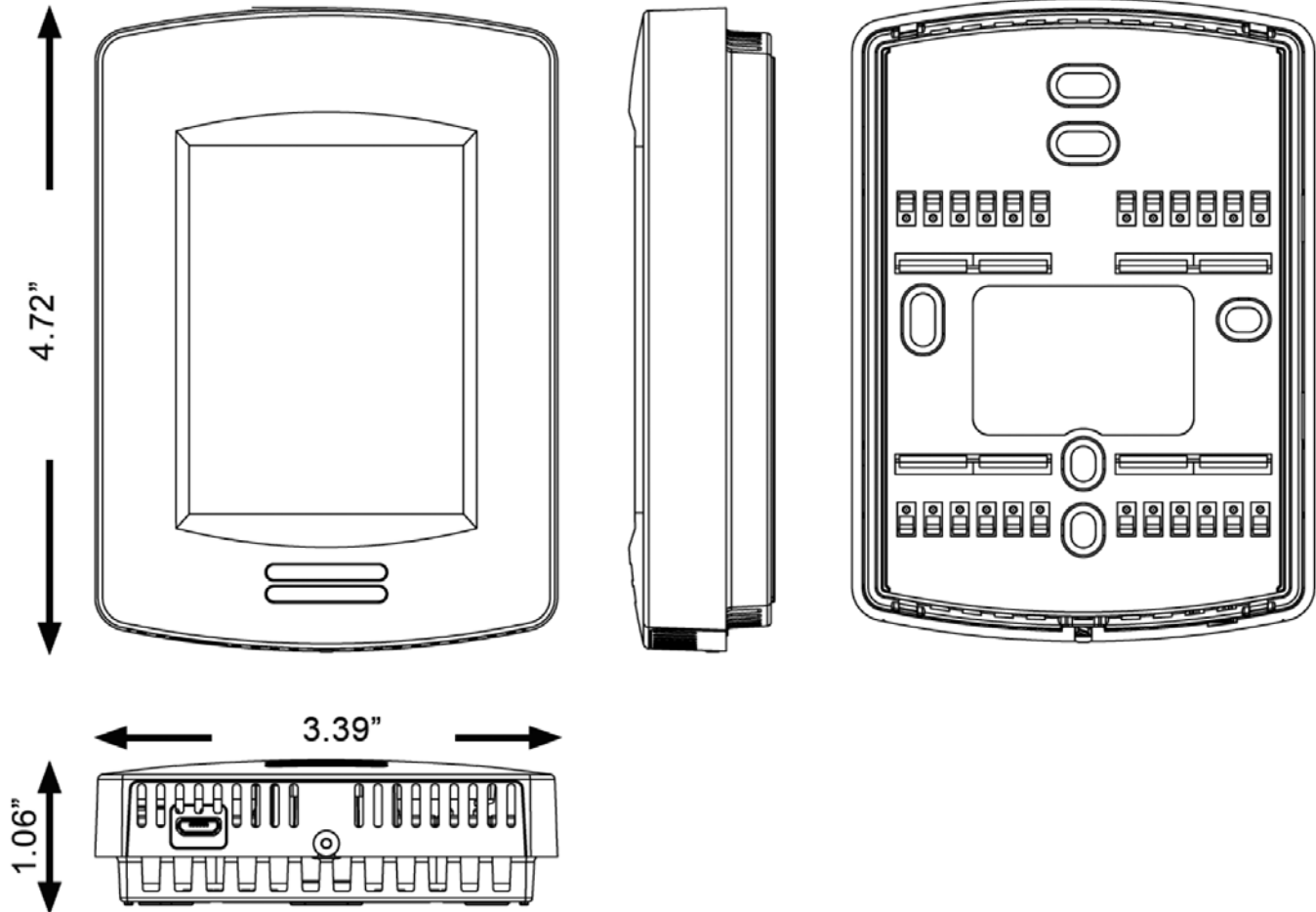


Tag #:

Date:

PO No.:

Dimensions: 4.72"H x 3.39"W x 1.06"D



PREMTBVC2
MultiSITE CRC2 Remote Controller



Tag #: _____

Date: _____

PO No.: _____



Job Name/Location: _____

PREMTBVC2
MultiSITE CRC2 Remote Controller



Tag No.: _____

Date: _____

PO No.: _____

| MultiSITE™ Remote Controller BACnet® COMMANDABLE Points | | | | |
|---|---------------------------|-------------|-----------|---|
| √ | BACnet® Object Name | Object Type | BACnet ID | Description |
| | UI16 Raw Value | AI | AI33 | Analog Input 7 Raw ADC Value (custom sensor support) |
| | UI17 Raw Value | AI | AI34 | Analog Input 6 Raw ADC Value (custom sensor support) |
| | DisplayLowBacklight | AV | AV3 | Display Brightness Setting For Low Backlight Conditions |
| | RoomTempCalibration | AV | AV7 | Room Temperature Sensor Calibration Offset |
| | Calibrate Humidity Sensor | AV | AV8 | Humidity Sensor Calibration Offset |
| | BACnetComAddr | AV | AV10 | BACnet Communications Address |
| | BACnetStackPollRate | AV | AV16 | BACnet Stack Poll Rate |
| | LuaParameterA (AV25) | AV | AV25 | Lua ParamaterA |
| | LuaParameterB (AV26) | AV | AV26 | Lua ParamaterB |
| | LuaParameterC (AV27) | AV | AV27 | Lua ParameterC |
| | LuaParameterD (AV28) | AV | AV28 | Lua ParameterD |
| | LuaParameterE (AV29) | AV | AV29 | Lua ParameterE |
| | LuaParameterF (AV30) | AV | AV30 | Lua ParameterF |
| | HeatingSP | AV | AV39 | Heating SP Setting (Dual SP) |
| | CoolingSP | AV | AV40 | Cooling SP Setting (Dual SP) |
| | ConfigPassword | AV | AV56 | Configuration Password (Password protects Installer Settings) |
| | UserPassword | AV | AV57 | User Password (Password protects all settings) |
| | DualSPdeadband | AV | AV63 | Minimum Deadband Setting (Dual SP) |
| | ADR Offset | AV | AV211 | ADR Setpoint Offset Value |
| | LuaParameterG (AV225) | AV | AV225 | Lua ParameterG |
| | LuaParameterH (AV226) | AV | AV226 | Lua ParameterH |
| | LuaParameterI (AV227) | AV | AV227 | Lua ParameterI |
| | LuaParameterJ (AV228) | AV | AV228 | Lua ParameterJ |
| | LuaParameterK (AV229) | AV | AV229 | Lua ParameterK |
| | LuaParameterL (AV230) | AV | AV230 | Lua ParameterL |
| | SingleSP | AV | AV507 | Setpoint Setting (Single SP) |
| | SingleSetpointMax | AV | AV508 | Single Setpoint Maximum Setting |
| | SingleSetpointMin | AV | AV509 | Single Setpoint Minimum Setting |
| | CoolingSPMax | AV | AV510 | Dual Setpoint Cooling Maximum Setting |
| | CoolingSPMin | AV | AV511 | Dual Setpoint Cooling Minimum Setting |
| | HeatingSPMax | AV | AV512 | Dual Setpoint Heating Maximum Setting |
| | HeatingSPMin | AV | AV513 | Dual Setpoint Heating Minimum Setting |
| | OverrideCoolingSP | AV | AV601 | Cooling Override Setpoint Setting |
| | OverrideHeatingSP | AV | AV602 | Heating Override Setpoint Setting |
| | SetbackCoolingSP | AV | AV605 | Cooling Setback Setpoint Setting |
| | SetbackHeatingSP | AV | AV606 | Heating Setback Setpoint Setting |

Note: Available functions/features may differ based on the connected system.

For continual product development, LG reserves the right to change specifications without notice.

© LG Electronics U.S.A., Inc., Englewood Cliffs, NJ. All rights reserved. "LG Life's Good" is a registered trademark of LG Corp. /www.lghvac.com

SB_MultiSITE_CRC2_PREMTBVC2_2024_05_21_114653

PREMTBVC2
MultiSITE CRC2 Remote Controller



Tag No.: _____

Date: _____

PO No.: _____

| MultiSITE™ Remote Controller BACnet® COMMANDABLE Points | | | | |
|---|--------------------------|-------------|-----------|---|
| √ | BACnet® Object Name | Object Type | BACnet ID | Description |
| | SingleSPdeadband | AV | AV644 | Single Setpoint Deadband |
| | MinODtempAdj | AV | AV645 | VAHU Minimum Outdoor Temperature For Internal Electric Heater |
| | Heater1OnTemp | AV | AV646 | Aux Heat Heater 1 On Adjustment |
| | Heater1OffTemp | AV | AV647 | Aux Heat Heater 1 Off Adjustment |
| | Heater2OnTemp | AV | AV648 | Aux Heat Heater 2 On Adjustment |
| | Heater2OffTemp | AV | AV649 | Aux Heat Heater 2 Off Adjustment |
| | ForceHighBacklight | BV | BV6 | Force Backlight |
| | DisplayLongScreenMsg | BV | BV7 | Show Text Of MsgLongScreenMsgTxt On Main Screen |
| | Utility Signal | BV | BV48 | ADR Request Signal From Utility |
| | FilterAlarmRelease | BV | BV510 | Filter Alarm Reset |
| | MsgSetbackActive | BV | BV542 | Setback Status |
| | TestModeOccupancy | BV | BV557 | Reserved/Do Not Use |
| | MsgShortScreenMsgTxt | CSV | CSV1 | Location Message (Displays message at bottom of screen) |
| | MsgLongScreenMsgTxt | CSV | CSV2 | Description Message (Displays message on main screen) |
| | LongMsgBgCol | MV | MV1 | Long Message Background Color Setting |
| | DisplayColor | MV | MV2 | Display Background Color Setting |
| | DisplayLanguage | MV | MV4 | Display Language Setting |
| | DisplayTimeFormat | MV | MV5 | Time Format Setting |
| | BACnetNetworkUnits | MV | MV6 | BACnet Network Units Setting |
| | SystemMode | MV | MV16 | System Mode Setting |
| | FanSpeed | MV | MV17 | Fan Speed Setting |
| | DisplayUseStandbyScreen | MV | MV32 | Standby Screen Setting |
| | TempUnits | MV | MV51 | Temperature Units Setting (°F or °C) |
| | UO9 Configuration | MV | MV96 | Universal Output 6 Configuration |
| | UI16 Input Type | MV | MV138 | Universal Input 7 Configuration |
| | UI17 Input Type | MV | MV139 | Universal Input 6 Configuration |
| | Relative humidity sensor | MV | MV149 | Humidity Sensor Input Selection |
| | CO2 source | MV | MV150 | CO2 Sensor Input Selection |
| | ADR Enable | MV | MV152 | ADR Enable/Disable |
| | ZB_Zone1SnsrType | MV | MV210 | Zigbee Zone1 Sensor Type |
| | ZB_Zone2SnsrType | MV | MV220 | Zigbee Zone2 Sensor Type |
| | ZB_Zone3SnsrType | MV | MV230 | Zigbee Zone3 Sensor Type |
| | ZB_Zone4SnsrType | MV | MV240 | Zigbee Zone4 Sensor Type |
| | ZB_Zone5SnsrType | MV | MV250 | Zigbee Zone5 Sensor Type |
| | ZB_Zone6SnsrType | MV | MV260 | Zigbee Zone6 Sensor Type |
| | ZB_Zone7SnsrType | MV | MV270 | Zigbee Zone7 Sensor Type |

Note: Available functions/features may differ based on the connected system.

For continual product development, LG reserves the right to change specifications without notice.

© LG Electronics U.S.A., Inc., Englewood Cliffs, NJ. All rights reserved. "LG Life's Good" is a registered trademark of LG Corp. /www.lghvac.com

Job Name/Location: _____

PREMTBVC2
MultiSITE CRC2 Remote Controller



Tag No.: _____

Date: _____

PO No.: _____

| MultiSITE™ Remote Controller BACnet® COMMANDABLE Points | | | | |
|---|------------------------|-------------|-----------|---|
| √ | BACnet® Object Name | Object Type | BACnet ID | Description |
| | ZB_Zone8SnrType | MV | MV280 | Zigbee Zone8 Sensor Type |
| | ZB_Zone9SnrType | MV | MV290 | Zigbee Zone9 Sensor Type |
| | ZB_Zone10SnrType | MV | MV300 | Zigbee Zone10 Sensor Type |
| | ZB_Zone11SnrType | MV | MV310 | Zigbee Zone11 Sensor Type |
| | ZB_Zone12SnrType | MV | MV320 | Zigbee Zone12 Sensor Type |
| | ZB_Zone13SnrType | MV | MV330 | Zigbee Zone13 Sensor Type |
| | ZB_Zone14SnrType | MV | MV340 | Zigbee Zone14 Sensor Type |
| | ZB_Zone15SnrType | MV | MV350 | Zigbee Zone15 Sensor Type |
| | ZB_Zone16SnrType | MV | MV360 | Zigbee Zone16 Sensor Type |
| | ZB_Zone17SnrType | MV | MV370 | Zigbee Zone17 Sensor Type |
| | ZB_Zone18SnrType | MV | MV380 | Zigbee Zone18 Sensor Type |
| | ZB_Zone19SnrType | MV | MV390 | Zigbee Zone19 Sensor Type |
| | ZB_Zone20SnrType | MV | MV400 | Zigbee Zone20 Sensor Type |
| | DisplayShowOnOff | MV | MV500 | Show or Hide On/Off Setting |
| | DisplayShowMode | MV | MV501 | Show or Hide Mode Setting |
| | DisplayShowSchedule | MV | MV502 | Show or Hide Schedule Setting |
| | DisplayShowMore | MV | MV503 | Show or Hide More Setting |
| | DisplayShowSetTemp | MV | MV504 | Show or Hide Set Temperature Setting |
| | DisplayShowSpaceTemp | MV | MV505 | Show or Hide Space Temperature Value |
| | DisplayShowFanSpeed | MV | MV506 | Show or Hide Fan Speed Setting |
| | DisplayShowHumidity | MV | MV507 | Show or Hide Humidity Value |
| | TempSenseLoc | MV | MV516 | Temperature Sensing Location Setting |
| | IDUonOff | MV | MV528 | Indoor Unit On/Off Setting |
| | AirflowUpDown | MV | MV531 | Airflow Up/Down Setting |
| | AirflowLeftRight | MV | MV532 | Airflow Left/Right Setting |
| | AirflowCircular | MV | MV533 | Airflow Circular Setting |
| | SingleDualSP | MV | MV538 | Single or Dual Setpoint Setting |
| | OverrideMode | MV | MV700 | Mode Override Setting |
| | OverrideFanSpeed | MV | MV701 | Fan Speed Override Setting |
| | OverrideTimer | MV | MV703 | Timer Override Setting |
| | SetbackMode | MV | MV704 | Mode Setback Setting |
| | SetbackFanSpeed | MV | MV705 | Fan Speed Setback Setting |
| | CntrlrOccSensor | MV | MV747 | On-board Occupancy Sensor Enable/Disable (Only on models PREMTBVC3/PREMTBVC4) |
| | ControllerMinOccOnTime | MV | MV748 | Minimum Occupancy Time Delay |
| | DisableSchedules | MV | MV763 | Disable Local Schedules Setting |

Note: Available functions/features may differ based on the connected system.

For continual product development, LG reserves the right to change specifications without notice.

© LG Electronics U.S.A., Inc., Englewood Cliffs, NJ. All rights reserved. "LG Life's Good" is a registered trademark of LG Corp. /www.lghvac.com

SB_MultiSITE_CRC2_PREMTBVC2_2024_05_21_114653

Job Name/Location: _____

PREMTBVC2
MultiSITE CRC2 Remote Controller



Tag No.: _____

Date: _____

PO No.: _____

| MultiSITE™ Remote Controller BACnet® COMMANDABLE Points | | | | |
|---|-----------------------|-------------|-----------|---|
| v | BACnet® Object Name | Object Type | BACnet ID | Description |
| | ZB_Snsr_Wn_Delay | MV | MV766 | Zigbee Window Contact Interlock Delay Setting |
| | ZB_Snsr_Win_Interlock | MV | MV767 | Zigbee Window Contact Interlock Setting |
| | AirflowSmart | MV | MV772 | Airflow Smart Setting |
| | AirflowRefresh | MV | MV774 | Airflow Refresh Setting |
| | FloorTempSensing | MV | MV776 | Enable Floor Temperature Sensing (Dual Vane 4-Way Cassette Only) |
| | HumanDetection | MV | MV777 | Enable Human Detection (Dual Vane 4-Way Cassette Only) |
| | HumanSensingFreq | MV | MV778 | Human Detection Sensing Frequency Adjustment (Dual Vane 4-Way Cassette Only) |
| | HumanSensitivity | MV | MV779 | Human Detection Sensitivity Adjustment (Dual Vane 4-Way Cassette Only) |
| | DetectionArea | MV | MV780 | Human Detection Area Adjustment (Dual Vane 4-Way Cassette Only) |
| | UnoccControl | MV | MV781 | Human Detection Unoccupied Behavior (Dual Vane 4-Way Cassette Only) |
| | UnoccStepTime | MV | MV782 | Human Detection Unoccupied Setpoint Step Timing (Dual Vane 4-Way Cassette Only) |
| | DisplayShowAirQuality | MV | MV784 | Show or Hide Air Quality (for unhealthy levels only) |
| | SetbackEnabled | MV | MV789 | Enable/Disable Setback |
| | OverrideEnabled | MV | MV790 | Enable/Disable Override |
| | DisplayShowCO2 | MV | MV791 | Show or Hide CO2 Value |
| | Logger | MV | MV792 | Reserved/Do Not Use |
| | ADR Override | MV | MV793 | Override Active ADR Event |
| | Manual Aux Heat | MV | MV801 | Aux Heat Control |
| | EmergencyHeat | MV | MV843 | Aux Heat Immediate Call |
| | VAHUminODtemp | MV | MV844 | Enable VAHU Outdoor Minimum Temperature For Internal Elect. Heater |
| | DefrostHeating | MV | MV845 | Enable Electric Heater During Defrost Cycle |
| | IDUdefrostFan | MV | MV846 | Enable IDU Fan During Defrost Cycle Electric Heating |
| | AuxHeatAdj | MV | MV847 | Enable Aux Heat Heater On/Off Adjustment |

Note: Available functions/features may differ based on the connected system.

For continual product development, LG reserves the right to change specifications without notice.

© LG Electronics U.S.A., Inc., Englewood Cliffs, NJ. All rights reserved. "LG Life's Good" is a registered trademark of LG Corp. /www.lghvac.com

SB_MultiSITE_CRC2_PREMTBVC2_2024_05_21_114653

Job Name/Location:

PREMTBVC2
MultiSITE CRC2 Remote Controller



Tag No.: _____

Date: _____

PO No.: _____

| MultiSITE™ Remote Controller BACnet® MONITOR Points | | | | |
|---|-------------------------------|-------------|-----------|--|
| √ | BACnet® Object Name | Object Type | BACnet ID | Description |
| | ZB_Zone1Temperature_M | AI | AI315 | Zigbee Zone1 Temperature |
| | ZB_Zone2Temperature_M | AI | AI316 | Zigbee Zone2 Temperature |
| | ZB_Zone3Temperature_M | AI | AI317 | Zigbee Zone3 Temperature |
| | ZB_Zone4Temperature_M | AI | AI318 | Zigbee Zone4 Temperature |
| | ZB_Zone5Temperature_M | AI | AI319 | Zigbee Zone5 Temperature |
| | ZB_Zone6Temperature_M | AI | AI320 | Zigbee Zone6 Temperature |
| | ZB_Zone7Temperature_M | AI | AI321 | Zigbee Zone7 Temperature |
| | ZB_Zone8Temperature_M | AI | AI322 | Zigbee Zone8 Temperature |
| | ZB_Zone9Temperature_M | AI | AI323 | Zigbee Zone9 Temperature |
| | ZB_Zone10Temperature_M | AI | AI324 | Zigbee Zone10 Temperature |
| | Wi-Fi Network Signal Strength | AI | AI342 | Wi-Fi Module Signal Strength |
| | Wi-Fi Module Boot Count | AI | AI343 | Incremental Boot Count Of Wi-Fi Module |
| | ZB_Zone11Temperature_M | AI | AI355 | Zigbee Zone11 Temperature |
| | ZB_Zone12Temperature_M | AI | AI356 | Zigbee Zone12 Temperature |
| | ZB_Zone13Temperature_M | AI | AI357 | Zigbee Zone13 Temperature |
| | ZB_Zone14Temperature_M | AI | AI358 | Zigbee Zone14 Temperature |
| | ZB_Zone15Temperature_M | AI | AI359 | Zigbee Zone15 Temperature |
| | ZB_Zone16Temperature_M | AI | AI360 | Zigbee Zone16 Temperature |
| | ZB_Zone17Temperature_M | AI | AI361 | Zigbee Zone17 Temperature |
| | ZB_Zone18Temperature_M | AI | AI362 | Zigbee Zone18 Temperature |
| | ZB_Zone19Temperature_M | AI | AI363 | Zigbee Zone19 Temperature |
| | ZB_Zone20Temperature_M | AI | AI364 | Zigbee Zone20 Temperature |
| | ZB_Zone1Humidity_M | AI | AI365 | Zigbee Zone1 Humidity (%) |
| | ZB_Zone2Humidity_M | AI | AI366 | Zigbee Zone2 Humidity (%) |
| | ZB_Zone3Humidity_M | AI | AI367 | Zigbee Zone3 Humidity (%) |
| | ZB_Zone4Humidity_M | AI | AI368 | Zigbee Zone4 Humidity (%) |
| | ZB_Zone5Humidity_M | AI | AI369 | Zigbee Zone5 Humidity (%) |
| | ZB_Zone6Humidity_M | AI | AI370 | Zigbee Zone6 Humidity (%) |
| | ZB_Zone7Humidity_M | AI | AI371 | Zigbee Zone7 Humidity (%) |
| | ZB_Zone8Humidity_M | AI | AI372 | Zigbee Zone8 Humidity (%) |
| | ZB_Zone9Humidity_M | AI | AI373 | Zigbee Zone9 Humidity (%) |
| | ZB_Zone10Humidity_M | AI | AI374 | Zigbee Zone10 Humidity (%) |
| | ZB_Zone11Humidity_M | AI | AI375 | Zigbee Zone11 Humidity (%) |
| | ZB_Zone12Humidity_M | AI | AI376 | Zigbee Zone12 Humidity (%) |
| | ZB_Zone13Humidity_M | AI | AI377 | Zigbee Zone13 Humidity (%) |
| | ZB_Zone14Humidity_M | AI | AI378 | Zigbee Zone14 Humidity (%) |
| | ZB_Zone15Humidity_M | AI | AI379 | Zigbee Zone15 Humidity (%) |

Note: Available functions/features may differ based on the connected system.

For continual product development, LG reserves the right to change specifications without notice.

© LG Electronics U.S.A., Inc., Englewood Cliffs, NJ. All rights reserved. "LG Life's Good" is a registered trademark of LG Corp. /www.lghvac.com

SB_MultiSITE_CRC2_PREMTBVC2_2024_05_21_114653

Job Name/Location:

PREMTBVC2
MultiSITE CRC2 Remote Controller



Tag No.: _____

Date: _____

PO No.: _____

| MultiSITE™ Remote Controller BACnet® MONITOR Points | | | | |
|---|----------------------|-------------|-----------|--|
| √ | BACnet® Object Name | Object Type | BACnet ID | Description |
| | ZB_Zone16Humidity_M | AI | AI380 | Zigbee Zone16 Humidity (%) |
| | ZB_Zone17Humidity_M | AI | AI381 | Zigbee Zone17 Humidity (%) |
| | ZB_Zone18Humidity_M | AI | AI382 | Zigbee Zone18 Humidity (%) |
| | ZB_Zone19Humidity_M | AI | AI383 | Zigbee Zone19 Humidity (%) |
| | ZB_Zone20Humidity_M | AI | AI384 | Zigbee Zone20 Humidity (%) |
| | ZB_Zone1CO2_M | AI | AI385 | Zigbee Zone1 CO2 (PPM) |
| | ZB_Zone2CO2_M | AI | AI386 | Zigbee Zone2 CO2 (PPM) |
| | ZB_Zone3CO2_M | AI | AI387 | Zigbee Zone3 CO2 (PPM) |
| | ZB_Zone4CO2_M | AI | AI388 | Zigbee Zone4 CO2 (PPM) |
| | ZB_Zone5CO2_M | AI | AI389 | Zigbee Zone5 CO2 (PPM) |
| | ZB_Zone6CO2_M | AI | AI390 | Zigbee Zone6 CO2 (PPM) |
| | ZB_Zone7CO2_M | AI | AI391 | Zigbee Zone7 CO2 (PPM) |
| | ZB_Zone8CO2_M | AI | AI392 | Zigbee Zone8 CO2 (PPM) |
| | ZB_Zone9CO2_M | AI | AI393 | Zigbee Zone9 CO2 (PPM) |
| | ZB_Zone10CO2_M | AI | AI394 | Zigbee Zone10 CO2 (PPM) |
| | ZB_Zone11CO2_M | AI | AI395 | Zigbee Zone11 CO2 (PPM) |
| | ZB_Zone12CO2_M | AI | AI396 | Zigbee Zone12 CO2 (PPM) |
| | ZB_Zone13CO2_M | AI | AI397 | Zigbee Zone13 CO2 (PPM) |
| | ZB_Zone14CO2_M | AI | AI398 | Zigbee Zone14 CO2 (PPM) |
| | ZB_Zone15CO2_M | AI | AI399 | Zigbee Zone15 CO2 (PPM) |
| | ZB_Zone16CO2_M | AI | AI400 | Zigbee Zone16 CO2 (PPM) |
| | ZB_Zone17CO2_M | AI | AI401 | Zigbee Zone17 CO2 (PPM) |
| | ZB_Zone18CO2_M | AI | AI402 | Zigbee Zone18 CO2 (PPM) |
| | ZB_Zone19CO2_M | AI | AI403 | Zigbee Zone19 CO2 (PPM) |
| | ZB_Zone20CO2_M | AI | AI404 | Zigbee Zone20 CO2 (PPM) |
| | FilterRemainTime_M | AI | AI500 | Filter Time Remaining (Hours) |
| | CurrentErrorCode_M | AI | AI503 | Current Error Code |
| | PipeInTemp_M | AI | AI506 | Pipe In Temperature |
| | PipeOutTemp_M | AI | AI507 | Pipe Out Temperature |
| | MiddlePipeTemp_M | AI | AI508 | Middle Pipe Temperature |
| | ODUgivenAddrs_M | AI | AI509 | Assigned Address By Outdoor Unit |
| | CC_CoolingSPMax | AI | AI510 | Cooling SP Maximum Value Set By Central Controller |
| | CC_CoolingSPMin | AI | AI511 | Cooling SP Minimum Value Set By Central Controller |
| | CC_HeatingSPMax | AI | AI512 | Heating SP Maximum Value Set By Central Controller |
| | CC_HeatingSPMin | AI | AI513 | Heating SP Minimum Value Set By Central Controller |
| | CC_SingleSetpointMax | AI | AI514 | Single SP Maximum Value Set By Central Controller |
| | CC_SingleSetpointMin | AI | AI515 | Single SP Minimum Value Set By Central Controller |

Note: Available functions/features may differ based on the connected system.

For continual product development, LG reserves the right to change specifications without notice.

© LG Electronics U.S.A., Inc., Englewood Cliffs, NJ. All rights reserved. "LG Life's Good" is a registered trademark of LG Corp. /www.lghvac.com

SB_MultiSITE_CRC2_PREMTBVC2_2024_05_21_114653

Job Name/Location:

PREMTBVC2
MultiSITE CRC2 Remote Controller



Tag No.: _____

Date: _____

PO No.: _____

MultiSITE™ Remote Controller BACnet® MONITOR Points

| V | BACnet® Object Name | Object Type | BACnet ID | Description |
|---|-----------------------------|-------------|-----------|---|
| | Effective Cool Setpoint | AI | AI520 | Effective Dual Setpoint Cooling Setpoint When ADR Is Active |
| | Effective Heat Setpoint | AI | AI521 | Effective Dual Setpoint Heating Setpoint When ADR Is Active |
| | Effective Single Setpoint | AI | AI522 | Effective Single Setpoint Setpoint When ADR Is Active |
| | Effective Single Deadband | AI | AI523 | Effective Single Setpoint Deadband When ADR Is Active |
| | UO9 Analog Output | AO | AO125 | UO9 Analog Output Value (T9 to T18) |
| | RoomTemp | AV | AV100 | Room Temperature |
| | RoomHumidity | AV | AV103 | Room Humidity |
| | UI16 Analog Input | AV | AV111 | Analog Input 7 Value |
| | UI17 Analog Input | AV | AV112 | Analog Input 6 Value |
| | UI16 Temperature | AV | AV117 | 10K Thermistor Input 7 Value |
| | UI17 Temperature | AV | AV118 | 10K Thermistor Input 6 Value |
| | CCaddressHigh | AV | AV500 | Central Control Address (High Order Byte - Group) |
| | CCaddressLow | AV | AV501 | Central Control Address (Low Order Byte - Unit) |
| | PreviousErrorCode_M | AV | AV622 | 2nd Chronological Error Code |
| | ErrorCode3_M | AV | AV623 | 3rd Chronological Error Code |
| | ErrorCode4_M | AV | AV624 | 4th Chronological Error Code |
| | ErrorCode5_M | AV | AV625 | 5th Chronological Error Code |
| | ErrorCode6_M | AV | AV626 | 6th Chronological Error Code |
| | ErrorCode7_M | AV | AV627 | 7th Chronological Error Code |
| | ErrorCode8_M | AV | AV628 | 8th Chronological Error Code |
| | ErrorCode9_M | AV | AV629 | 9th Chronological Error Code |
| | ErrorCode10_M | AV | AV630 | 10th Chronological Error Code |
| | OldestErrorCode_M | AV | AV631 | 11th Chronological Error Code |
| | UI16 Binary Input | BI | BI29 | Binary Input 7 Measurement |
| | UI17 Binary Input | BI | BI30 | Binary Input 6 Measurement |
| | UO9 Binary Output | BO | BO93 | Binary Output 6 Measurement |
| | BO8 Auxiliary Binary Output | BO | BO98 | Binary Output 5 Measurement |
| | ZB_LowBattAlarm | BV | BV5 | Global Zigbee Battery Sensor Alarm |
| | PIR Local Motion | BV | BV32 | Logical OR'd Instantaneous Status of All Motion Sensors |
| | ADR Active | BV | BV49 | Effective ADR Status |
| | FilterAlarm_M | BV | BV500 | Filter Alarm Status |
| | IduCoolHeatCycle_M | BV | BV508 | IDU Cooling / Heating Status |
| | MsgAddressLock_M | BV | BV533 | Central Control Address Lock Status |
| | MsgOverrideActive | BV | BV541 | Override Status |
| | ZB_Snsr_Wn_Interlock_M | BV | BV552 | Zigbee Window Contact Interlock Status |
| | Hardware fault | BV | BV564 | Hardware Fault Status |

Note: Available functions/features may differ based on the connected system.

For continual product development, LG reserves the right to change specifications without notice.

© LG Electronics U.S.A., Inc., Englewood Cliffs, NJ. All rights reserved. "LG Life's Good" is a registered trademark of LG Corp. /www.lghvac.com

SB_MultiSITE_CRC2_PREMTBVC2_2024_05_21_114653

Job Name/Location: _____

PREMTBVC2
MultiSITE CRC2 Remote Controller



Tag No.: _____

Date: _____

PO No.: _____

| MultiSITE™ Remote Controller BACnet® MONITOR Points | | | | |
|---|--------------------------|-------------|-----------|-------------------------------|
| √ | BACnet® Object Name | Object Type | BACnet ID | Description |
| | Wi-Fi Device Name | CSV | CSV4 | Wi-Fi Device Name |
| | Wi-Fi Firmware Version | CSV | CSV5 | Wi-Fi Module Firmware Version |
| | MAC Address | CSV | CSV6 | Wi-Fi Module MAC Address |
| | Wi-Fi Network SSID | CSV | CSV7 | Wi-Fi Network SSID |
| | Wi-Fi Network IP Address | CSV | CSV8 | Wi-Fi Network IP Address |
| | Zigbee Firmware Revision | CSV | CSV9 | Zigbee Firmware Version |
| | Zigbee IEEE Address | CSV | CSV10 | Zigbee MAC Address |
| | ZB_Zone1Address_M | CSV | CSV11 | Zigbee Zone1 Address |
| | ZB_Zone2Address_M | CSV | CSV12 | Zigbee Zone2 Address |
| | ZB_Zone3Address_M | CSV | CSV13 | Zigbee Zone3 Address |
| | ZB_Zone4Address_M | CSV | CSV14 | Zigbee Zone4 Address |
| | ZB_Zone5Address_M | CSV | CSV15 | Zigbee Zone5 Address |
| | ZB_Zone6Address_M | CSV | CSV16 | Zigbee Zone6 Address |
| | ZB_Zone7Address_M | CSV | CSV17 | Zigbee Zone7 Address |
| | ZB_Zone8Address_M | CSV | CSV18 | Zigbee Zone8 Address |
| | ZB_Zone9Address_M | CSV | CSV19 | Zigbee Zone9 Address |
| | ZB_Zone10Address_M | CSV | CSV20 | Zigbee Zone10 Address |
| | ZB_Zone11Address_M | CSV | CSV21 | Zigbee Zone11 Address |
| | ZB_Zone12Address_M | CSV | CSV22 | Zigbee Zone12 Address |
| | ZB_Zone13Address_M | CSV | CSV23 | Zigbee Zone13 Address |
| | ZB_Zone14Address_M | CSV | CSV24 | Zigbee Zone14 Address |
| | ZB_Zone15Address_M | CSV | CSV25 | Zigbee Zone15 Address |
| | ZB_Zone16Address_M | CSV | CSV26 | Zigbee Zone16 Address |
| | ZB_Zone17Address_M | CSV | CSV27 | Zigbee Zone17 Address |
| | ZB_Zone18Address_M | CSV | CSV28 | Zigbee Zone18 Address |
| | ZB_Zone19Address_M | CSV | CSV29 | Zigbee Zone19 Address |
| | ZB_Zone20Address_M | CSV | CSV30 | Zigbee Zone20 Address |
| | ZB_NetworkStatus_M | MSI | MSI2 | Zigbee Network Status |
| | ZB_Zone1SensorType_M | MSI | MSI180 | Zigbee Zone1 Sensor Type |
| | ZB_Zone2SensorType_M | MSI | MSI181 | Zigbee Zone2 Sensor Type |
| | ZB_Zone3SensorType_M | MSI | MSI182 | Zigbee Zone3 Sensor Type |
| | ZB_Zone4SensorType_M | MSI | MSI183 | Zigbee Zone4 Sensor Type |
| | ZB_Zone5SensorType_M | MSI | MSI184 | Zigbee Zone5 Sensor Type |
| | ZB_Zone6SensorType_M | MSI | MSI185 | Zigbee Zone6 Sensor Type |
| | ZB_Zone7SensorType_M | MSI | MSI186 | Zigbee Zone7 Sensor Type |
| | ZB_Zone8SensorType_M | MSI | MSI187 | Zigbee Zone8 Sensor Type |

Note: Available functions/features may differ based on the connected system.

For continual product development, LG reserves the right to change specifications without notice.

© LG Electronics U.S.A., Inc., Englewood Cliffs, NJ. All rights reserved. "LG Life's Good" is a registered trademark of LG Corp. /www.lghvac.com

SB_MultiSITE_CRC2_PREMTBVC2_2024_05_21_114653

Job Name/Location:

PREMTBVC2

MultiSITE CRC2 Remote Controller



Tag No.: _____

Date: _____

PO No.: _____

MultiSITE™ Remote Controller BACnet® MONITOR Points

| √ | BACnet® Object Name | Object Type | BACnet ID | Description |
|---|-------------------------|-------------|-----------|-----------------------------|
| | ZB_Zone9SensorType_M | MSI | MSI188 | Zigbee Zone8 Sensor Type |
| | ZB_Zone10SensorType_M | MSI | MSI189 | Zigbee Zone10 Sensor Type |
| | ZB_Zone11SensorType_M | MSI | MSI190 | Zigbee Zone11 Sensor Type |
| | ZB_Zone12SensorType_M | MSI | MSI191 | Zigbee Zone12 Sensor Type |
| | ZB_Zone13SensorType_M | MSI | MSI192 | Zigbee Zone13 Sensor Type |
| | ZB_Zone14SensorType_M | MSI | MSI193 | Zigbee Zone14 Sensor Type |
| | ZB_Zone15SensorType_M | MSI | MSI194 | Zigbee Zone15 Sensor Type |
| | ZB_Zone16SensorType_M | MSI | MSI195 | Zigbee Zone16 Sensor Type |
| | ZB_Zone17SensorType_M | MSI | MSI196 | Zigbee Zone17 Sensor Type |
| | ZB_Zone18SensorType_M | MSI | MSI197 | Zigbee Zone18 Sensor Type |
| | ZB_Zone19SensorType_M | MSI | MSI198 | Zigbee Zone19 Sensor Type |
| | ZB_Zone20SensorType_M | MSI | MSI199 | Zigbee Zone20 Sensor Type |
| | ZB_Zone1Status_M | MSI | MSI210 | Zigbee Zone1 Status |
| | ZB_Zone1BattStatus_M | MSI | MSI211 | Zigbee Zone1 Battery Status |
| | ZB_Zone1PairingStatus_M | MSI | MSI212 | Zigbee Zone1 Pairing Status |
| | ZB_Zone2Status_M | MSI | MSI220 | Zigbee Zone2 Status |
| | ZB_Zone2BattStatus_M | MSI | MSI221 | Zigbee Zone2 Battery Status |
| | ZB_Zone2PairingStatus_M | MSI | MSI222 | Zigbee Zone2 Pairing Status |
| | ZB_Zone3Status_M | MSI | MSI230 | Zigbee Zone3 Status |
| | ZB_Zone3BattStatus_M | MSI | MSI231 | Zigbee Zone3 Battery Status |
| | ZB_Zone3PairingStatus_M | MSI | MSI232 | Zigbee Zone3 Pairing Status |
| | ZB_Zone4Status_M | MSI | MSI240 | Zigbee Zone4 Status |
| | ZB_Zone4BattStatus_M | MSI | MSI241 | Zigbee Zone4 Battery Status |
| | ZB_Zone4PairingStatus_M | MSI | MSI242 | Zigbee Zone4 Pairing Status |
| | ZB_Zone5Status_M | MSI | MSI250 | Zigbee Zone5 Status |
| | ZB_Zone5BattStatus_M | MSI | MSI251 | Zigbee Zone5 Battery Status |
| | ZB_Zone5PairingStatus_M | MSI | MSI252 | Zigbee Zone5 Pairing Status |
| | ZB_Zone6Status_M | MSI | MSI260 | Zigbee Zone6 Status |
| | ZB_Zone6BattStatus_M | MSI | MSI261 | Zigbee Zone6 Battery Status |
| | ZB_Zone6PairingStatus_M | MSI | MSI262 | Zigbee Zone6 Pairing Status |
| | ZB_Zone7Status_M | MSI | MSI270 | Zigbee Zone7 Status |
| | ZB_Zone7BattStatus_M | MSI | MSI271 | Zigbee Zone7 Battery Status |
| | ZB_Zone7PairingStatus_M | MSI | MSI272 | Zigbee Zone7 Pairing Status |
| | ZB_Zone8Status_M | MSI | MSI280 | Zigbee Zone8 Status |
| | ZB_Zone8BattStatus_M | MSI | MSI281 | Zigbee Zone8 Battery Status |
| | ZB_Zone8PairingStatus_M | MSI | MSI282 | Zigbee Zone8 Pairing Status |

Note: Available functions/features may differ based on the connected system.

For continual product development, LG reserves the right to change specifications without notice.

© LG Electronics U.S.A., Inc., Englewood Cliffs, NJ. All rights reserved. "LG Life's Good" is a registered trademark of LG Corp. /www.lghvac.com

SB_MultiSITE_CRC2_PREMTBVC2_2024_05_21_114653

Job Name/Location: _____

PREMTBVC2
MultiSITE_CRC2 Remote Controller



Tag No.: _____

Date: _____

PO No.: _____

| MultiSITE™ Remote Controller BACnet® MONITOR Points | | | | |
|---|--------------------------|-------------|-----------|--|
| √ | BACnet® Object Name | Object Type | BACnet ID | Description |
| | ZB_Zone9Status_M | MSI | MSI290 | Zigbee Zone9 Status |
| | ZB_Zone9BattStatus_M | MSI | MSI291 | Zigbee Zone9 Battery Status |
| | ZB_Zone9PairingStatus_M | MSI | MSI292 | Zigbee Zone9 Pairing Status |
| | ZB_Zone10Status_M | MSI | MSI300 | Zigbee Zone10 Status |
| | ZB_Zone10BattStatus_M | MSI | MSI301 | Zigbee Zone10 Battery Status |
| | ZB_Zone10PairingStatus_M | MSI | MSI302 | Zigbee Zone10 Pairing Status |
| | ZB_Zone11Status_M | MSI | MSI310 | Zigbee Zone11 Status |
| | ZB_Zone11BattStatus_M | MSI | MSI311 | Zigbee Zone11 Battery Status |
| | ZB_Zone11PairingStatus_M | MSI | MSI312 | Zigbee Zone11 Pairing Status |
| | Wi-Fi Module Status | MSI | MSI315 | Wi-Fi Module Status |
| | Wi-Fi Status | MSI | MSI316 | Wi-Fi Network Status |
| | BACnet IP Status | MSI | MSI317 | BACnet IP Network Status |
| | SMTP Server Status | MSI | MSI318 | Status Of SMTP Server Used For Email Notifications |
| | ZB_Zone12Status_M | MSI | MSI320 | Zigbee Zone12 Status |
| | ZB_Zone12BattStatus_M | MSI | MSI321 | Zigbee Zone12 Battery Status |
| | ZB_Zone12PairingStatus_M | MSI | MSI322 | Zigbee Zone12 Pairing Status |
| | ZB_Zone13Status_M | MSI | MSI330 | Zigbee Zone13 Status |
| | ZB_Zone13BattStatus_M | MSI | MSI331 | Zigbee Zone13 Battery Status |
| | ZB_Zone13PairingStatus_M | MSI | MSI332 | Zigbee Zone13 Pairing Status |
| | ZB_Zone14Status_M | MSI | MSI340 | Zigbee Zone14 Status |
| | ZB_Zone14BattStatus_M | MSI | MSI341 | Zigbee Zone14 Battery Status |
| | ZB_Zone14PairingStatus_M | MSI | MSI342 | Zigbee Zone14 Pairing Status |
| | ZB_Zone15Status_M | MSI | MSI350 | Zigbee Zone15 Status |
| | ZB_Zone15BattStatus_M | MSI | MSI351 | Zigbee Zone15 Battery Status |
| | ZB_Zone15PairingStatus_M | MSI | MSI352 | Zigbee Zone15 Pairing Status |
| | ZB_Zone16Status_M | MSI | MSI360 | Zigbee Zone16 Status |
| | ZB_Zone16BattStatus_M | MSI | MSI361 | Zigbee Zone16 Battery Status |
| | ZB_Zone16PairingStatus_M | MSI | MSI362 | Zigbee Zone16 Pairing Status |
| | ZB_Zone17Status_M | MSI | MSI370 | Zigbee Zone17 Status |
| | ZB_Zone17BattStatus_M | MSI | MSI371 | Zigbee Zone17 Battery Status |
| | ZB_Zone17PairingStatus_M | MSI | MSI372 | Zigbee Zone17 Pairing Status |
| | ZB_Zone18Status_M | MSI | MSI380 | Zigbee Zone18 Status |
| | ZB_Zone18BattStatus_M | MSI | MSI381 | Zigbee Zone18 Battery Status |
| | ZB_Zone18PairingStatus_M | MSI | MSI382 | Zigbee Zone18 Pairing Status |
| | ZB_Zone19Status_M | MSI | MSI390 | Zigbee Zone19 Status |
| | ZB_Zone19BattStatus_M | MSI | MSI391 | Zigbee Zone19 Battery Status |

Note: Available functions/features may differ based on the connected system.

For continual product development, LG reserves the right to change specifications without notice.

© LG Electronics U.S.A., Inc., Englewood Cliffs, NJ. All rights reserved. "LG Life's Good" is a registered trademark of LG Corp. /www.lghvac.com

SB_MultiSITE_CRC2_PREMTBVC2_2024_05_21_114653

Job Name/Location: _____

PREMTBVC2

MultiSITE CRC2 Remote Controller



Tag No.: _____

Date: _____

PO No.: _____

MultiSITE™ Remote Controller BACnet® MONITOR Points

| √ | BACnet® Object Name | Object Type | BACnet ID | Description |
|---|--------------------------|-------------|-----------|---|
| | ZB_Zone19PairingStatus_M | MSI | MSI392 | Zigbee Zone19 Pairing Status |
| | ZB_Zone20Status_M | MSI | MSI400 | Zigbee Zone20 Status |
| | ZB_Zone20BattStatus_M | MSI | MSI401 | Zigbee Zone20 Battery Status |
| | ZB_Zone20PairingStatus_M | MSI | MSI402 | Zigbee Zone20 Pairing Status |
| | PipeTempCnfg_M | MSI | MSI544 | Pipe Temperature Configuration Status (Supported or Unsup-ported) |
| | ODUsilentMode_M | MSI | MSI600 | ODU Silent Mode Status |
| | SmartLoadCtrl_M | MSI | MSI601 | Smart Load Control Status |
| | OccStatus_M | MSI | MSI602 | Occupancy Status |
| | ODUstatus_M | MSI | MSI603 | Outdoor Unit Status |
| | ODUType_M | MSI | MSI604 | Outdoor Unit Type |
| | IDUType_M | MSI | MSI605 | Indoor Unit Type |
| | AirQuality_M | MSI | MSI611 | Air Quality Status |
| | OduOperationMode_M | MV | MV732 | ODU Operation Cycle |
| | Logger Status | MV | MV802 | Diagnostic Logging Status |

Note: Available functions/features may differ based on the connected system.

For continual product development, LG reserves the right to change specifications without notice.

© LG Electronics U.S.A., Inc., Englewood Cliffs, NJ. All rights reserved. "LG Life's Good" is a registered trademark of LG Corp. /www.lghvac.com

SB_MultiSITE_CRC2_PREMTBVC2_2024_05_21_114653