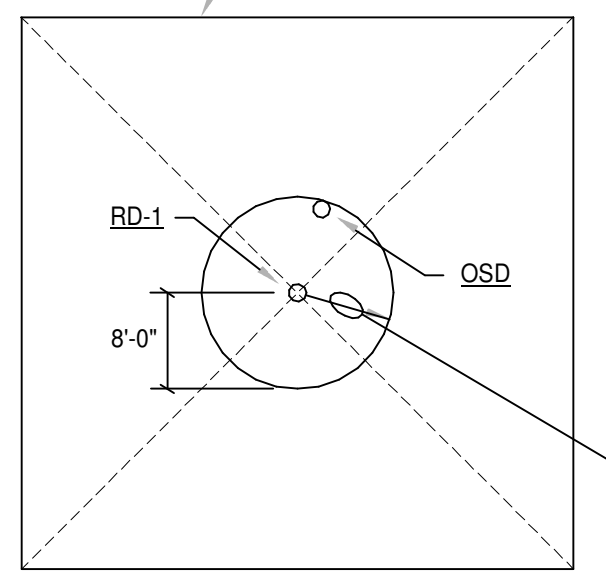


PETTIT & PETTIT
CONSULTING ENGINEERS, INC.
PERMIT SET

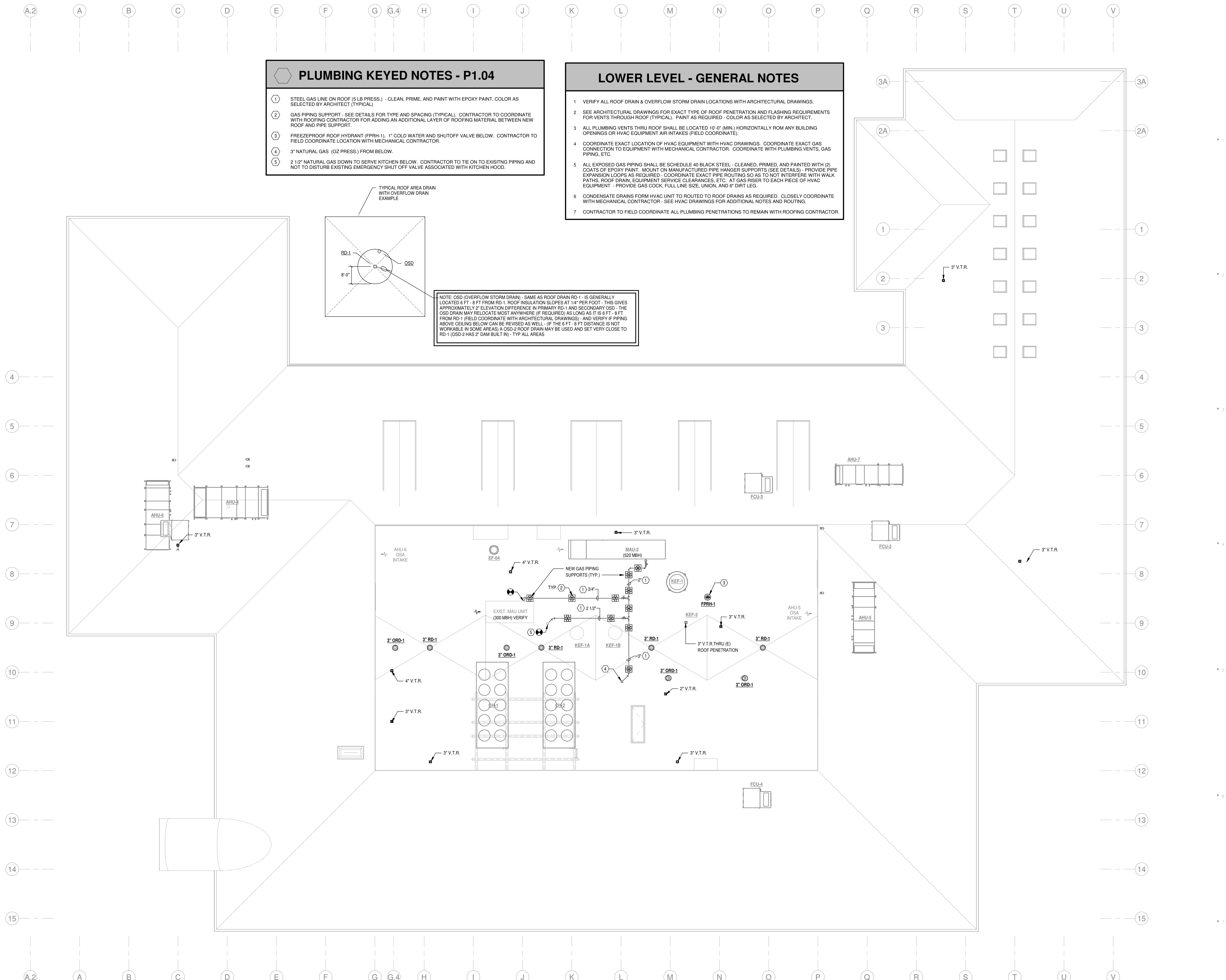
- ### PLUMBING KEYED NOTES - P1.04
- STEEL GAS LINE ON ROOF (5 LB PRESS.) - CLEAN, PRIME, AND PAINT WITH EPOXY PAINT. COLOR AS SELECTED BY ARCHITECT (TYPICAL).
 - GAS PIPING SUPPORT - SEE DETAILS FOR TYPE AND SPACING (TYPICAL). CONTRACTOR TO COORDINATE WITH ROOFING CONTRACTOR FOR ADDING AN ADDITIONAL LAYER OF ROOFING MATERIAL BETWEEN NEW ROOF AND PIPE SUPPORT.
 - FREEZEPROOF ROOF HYDRANT (FPRH-1). 1" COLD WATER AND SHUTOFF VALVE BELOW. CONTRACTOR TO FIELD COORDINATE LOCATION WITH MECHANICAL CONTRACTOR.
 - 3" NATURAL GAS (OZ PRESS.) FROM BELOW.
 - 2 1/2" NATURAL GAS DOWN TO SERVE KITCHEN BELOW. CONTRACTOR TO TIE ON TO EXISTING PIPING AND NOT TO DISTURB EXISTING EMERGENCY SHUT OFF VALVE ASSOCIATED WITH KITCHEN HOOD.

- ### LOWER LEVEL - GENERAL NOTES
- VERIFY ALL ROOF DRAIN & OVERFLOW STORM DRAIN LOCATIONS WITH ARCHITECTURAL DRAWINGS.
 - SEE ARCHITECTURAL DRAWINGS FOR EXACT TYPE OF ROOF PENETRATION AND FLASHING REQUIREMENTS FOR VENTS THROUGH ROOF (TYPICAL). PAINT AS REQUIRED - COLOR AS SELECTED BY ARCHITECT.
 - ALL PLUMBING VENTS THRU ROOF SHALL BE LOCATED 10'-0" (MIN.) HORIZONTALLY FROM ANY BUILDING OPENINGS OR HVAC EQUIPMENT AIR INTAKES (FIELD COORDINATE).
 - COORDINATE EXACT LOCATION OF HVAC EQUIPMENT WITH HVAC DRAWINGS. COORDINATE EXACT GAS CONNECTION TO EQUIPMENT WITH MECHANICAL CONTRACTOR. COORDINATE WITH PLUMBING VENTS, GAS PIPING, ETC.
 - ALL EXPOSED GAS PIPING SHALL BE SCHEDULE 40 BLACK STEEL - CLEANED, PRIMED, AND PAINTED WITH (2) COATS OF EPOXY PAINT. MOUNT ON MANUFACTURED PIPE HANGER SUPPORTS (SEE DETAILS) - PROVIDE PIPE EXPANSION LOOPS AS REQUIRED - COORDINATE EXACT PIPE ROUTING SO AS TO NOT INTERFERE WITH WALK PATHS, ROOF DRAIN, EQUIPMENT SERVICE CLEARANCES, ETC. AT GAS RISER TO EACH PIECE OF HVAC EQUIPMENT - PROVIDE GAS COCK, FULL LINE SIZE UNION, AND 6" DIRT LEG.
 - CONDENSATE DRAINS FROM HVAC UNIT TO ROUTED TO ROOF DRAINS AS REQUIRED. CLOSELY COORDINATE WITH MECHANICAL CONTRACTOR - SEE HVAC DRAWINGS FOR ADDITIONAL NOTES AND ROUTING.
 - CONTRACTOR TO FIELD COORDINATE ALL PLUMBING PENETRATIONS TO REMAIN WITH ROOFING CONTRACTOR.

TYPICAL ROOF AREA DRAIN WITH OVERFLOW DRAIN EXAMPLE



NOTE: OSD (OVERFLOW STORM DRAIN) - SAME AS ROOF DRAIN RD-1 - IS GENERALLY LOCATED 6 FT - 8 FT FROM RD-1. ROOF INSULATION SLOPES AT 1/4" PER FOOT - THIS GIVES APPROXIMATELY 2" ELEVATION DIFFERENCE IN PRIMARY RD-1 AND SECONDARY OSD - THE OSD DRAIN MAY RELOCATE MOST ANYWHERE (IF REQUIRED) AS LONG AS IT IS 6 FT - 8 FT FROM RD-1 (FIELD COORDINATE WITH ARCHITECTURAL DRAWINGS) - AND VERIFY IF PIPING ABOVE CEILING BELOW CAN BE REVISED AS WELL - (IF THE 6 FT - 8 FT DISTANCE IS NOT WORKABLE IN SOME AREAS) A OSD 2 ROOF DRAIN MAY BE USED AND SET VERY CLOSE TO RD-1 (OSD-2 HAS 2" DAM BUILT IN) - TYP ALL AREAS



1 ROOF PLAN - PLUMBING
1/8" = 1'-0" NORTH

ADDITION AND RENOVATION TO PLEASANT VALLEY COUNTRY CLUB

CLUBHOUSE
1 PLEASANT VALLEY DRIVE
LITTLE ROCK, ARKANSAS 72212

REVISIONS

NO.	DATE	DESCRIPTION

PROJECT NO.
21075
DATE:
June 21, 2023

ROOF PLAN -
PLUMBING
P1.04-A