



PERMIT SET

PLUMBING KEYED NOTES - P1.02

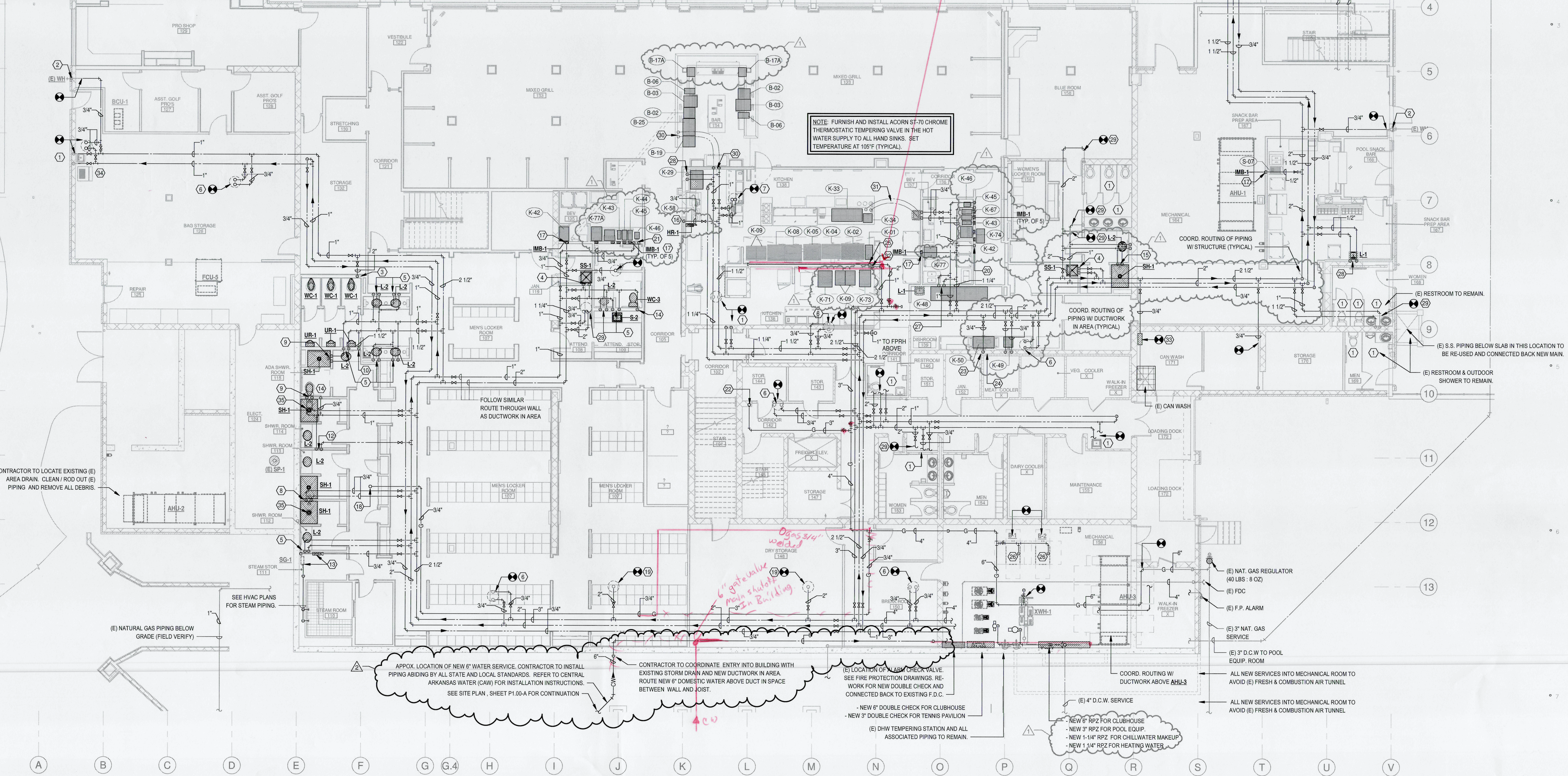
- 1 EXISTING PLUMBING FIXTURES AND ALL ASSOCIATED PIPING IN WALL TO REMAIN. CONTRACTOR TO TAKE MEASURES FOR PROTECTING THE EXISTING FIXTURES FROM DAMAGE DURING ALL PHASES OF CONSTRUCTION. CONNECT NEW COLD AND HOT WATER PIPING TO EXISTING ABOVE CEILING.
- 2 EXISTING EXTERNAL WATER HYDRANT AND ALL ASSOCIATED PIPING IN WALL TO REMAIN. CONTRACTOR TO TAKE MEASURES FOR PROTECTING THE EXISTING FIXTURES FROM DAMAGE DURING ALL PHASES OF CONSTRUCTION. CONNECT NEW 3/4" COLD WATER PIPING ABOVE CEILING.
- 3 2" COLD WATER DROP IN CHASE, RUN 2" HEADER FULL SIZE ENTIRE LENGTH OF CHASE, EXTEND 1/4" TO EACH WATER CLOSET. INSTALL ZURN #400 WATER HAMMER ARRESTOR AT EACH END OF HEADER PER MANUFACTURER'S INSTRUCTIONS.
- 4 3/4" HOT & COLD WATER DOWN TO SERVICE SINK.
- 5 1/2" HOT & COLD WATER DOWN IN CHASE TO LAVATORY / SINK.
- 6 3/4" HOT & COLD WATER UP TO EXISTING PIPING STUBBED THROUGH SLAB.
- 7 1" HOT & COLD WATER UP TO EXISTING PIPING STUBBED THROUGH SLAB.
- 8 3/4" HOT & COLD WATER DOWN IN CHASE TO SHOWERS. CONTRACTOR TO CLEAN & REBUILD BOTH VALVE AND HEADS BEFORE RE-INSTALLING EXISTING FIXTURES REMOVED DURING DEMOLITION OF MEN'S LOCKER ROOM. CONTRACTOR TO PROVIDE ALL NEW PIPING TO EXISTING FIXTURES.
- 9 1/2" HOT & COLD WATER DOWN IN CHASE TO SHOWER. CONTRACTOR TO CLEAN & REBUILD BOTH VALVE AND HEADS BEFORE RE-INSTALLING EXISTING FIXTURES REMOVED DURING DEMOLITION OR MEN'S LOCKER ROOM. CONTRACTOR TO PROVIDE ALL NEW PIPING TO EXISTING FIXTURES.
- 10 2" COLD WATER DROP IN CHASE, RUN 1 1/2" HEADER FULL SIZE ENTIRE LENGTH OF CHASE, EXTEND 1" TO EACH URINAL. INSTALL ZURN #300 WATER HAMMER ARRESTOR AT EACH END OF HEADER PER MANUFACTURER'S INSTRUCTIONS.
- 11 1-1/4" COLD WATER DOWN IN CHASE TO WATER CLOSET BELOW.
- 12 1/2" HOT & COLD WATER DOWN IN CHASE. ROUTE PIPING IN CHASE WALL LOCATED BELOW COUNTER TOP TO EACH LAVATORY.
- 13 ROUTE 3/4" COLD WATER TO STEAM GENERATOR SG-1. CONTRACTOR TO PROVIDE 3/4" RPZ DOMESTIC WATER BACKFLOW PREVENTER IN STEAM STORAGE ROOM AND COORDINATE LOCATION OF VALVE WITH EQUIPMENT. VERIFY EXACT REQUIREMENTS FOR MAINTENANCE AND TESTING - ROUTE BLOWOFF PIPING (WITH AIR GAP) FULL SIZE TO FLOOR DRAIN.
- 14 ROUTE 1/2" COLD WATER DOWN TO FLUSH TANK WATER CLOSET WC-3 BELOW.
- 15 1/2" HOT & COLD WATER DOWN IN CHASE TO SHOWERS.
- 16 3/4" COLD WATER DOWN TO HOSE REEL BELOW. CONTRACTOR TO COORDINATE LOCATION AND CONNECTION REQUIREMENTS WITH FIXTURE.
- 17 1/2" COLD WATER DOWN TO (ICE MAKER BOX) ICB-1.
- 18 3/4" NATURAL GAS UP TO FIRE PLACE IN BOARD ROOM ON UPPER LEVEL.
- 19 2" COLD WATER UP TO EXISTING PIPING STUBBED THROUGH SLAB.
- 20 3/4" COLD WATER DOWN IN CHASE, RUN 3/4" HEADER FULL SIZE ENTIRE LENGTH OF CHASE, EXTEND 1/2" TO EACH (ICE MAKER BOX) ICB-1. INSTALL ZURN #100 WATER HAMMER ARRESTOR AT EACH END OF THE HEADER PER MANUFACTURER'S INSTRUCTIONS.
- 21 3/4" HOT & COLD WATER DOWN IN CHASE TO SINK BELOW. RUN 3/4" HEADER FULL SIZE ENTIRE LENGTH OF CHASE, EXTEND 1/2" TO EACH (ICE MAKER BOX) ICB-1. INSTALL ZURN #100 WATER HAMMER ARRESTOR AT EACH END OF THE HEADER PER MANUFACTURER'S INSTRUCTIONS.
- 22 3" NATURAL GAS UP THROUGH EXISTING FLOOR PENETRATION.
- 23 3/4" HOT WATER DOWN IN CHASE TO DISHWASHER BELOW. SEE KITCHEN GENERAL NOTES, SHEET P0.00.
- 24 3/4" HOT & COLD WATER DOWN IN CHASE TO SOILED TABLE. ROUGH-IN AND FINAL CONNECT OF PRE-RINSE FAUCET AND SWING SPOT. SEE KITCHEN GENERAL NOTES, SHEET P0.00 AND DETAIL 2, SHEET P2.04 FOR DETAILS OF DISPOSAL CONNECTION (ROUGH-IN AND FINAL CONNECT ONLY).
- 25 2" GAS DROP (1,500 MBH) WITH ESCUTCHEON, GAS COCK, UNION, AND EMERGENCY GAS VALVE (FURNISHED BY HOOD SUPPLIER AS HIGH AS POSSIBLE). DROP 2" GAS TO HEADER BEHIND EQUIPMENT. INSTALL DIRT LEG AT EACH END OF HEADERS. PROVIDE 1" MINIMUM GAS AT EACH APPLIANCE WITH GAS COOK, UNION, AND T&S #HG-S SERIES FLEXIBLE GAS CONNECTOR. REFER TO KITCHEN EQUIPMENT FOR SIZES - SEE GAS MANIFOLD DETAIL. NOTE: DO NOT SUPPORT ANY HOT / COLD WATER HEADERS OR HYDRANTS FROM GAS MANIFOLD. SEE KITCHEN GENERAL NOTES, SHEET P0.00.
- 26 1-1/2" GAS DROP TO EXISTING BOILERS.
- 27 1/2" HOT & COLD WATER DOWN IN CHASE TO 3-COMPARTMENT SINK BELOW. SEE KITCHEN GENERAL NOTES, SHEET P0.00.
- 28 1/2" HOT & COLD WATER DOWN IN CHASE TO SINK BELOW.
- 29 CONNECT NEW HOT & COLD WATER PIPING TO EXISTING PIPING SERVING RESTROOM. EXISTING WATER PIPING TO REMAIN IN CHASE. CONTRACTOR TO FIELD VERIFY SIZES AND RE-CONNECT TO EXISTING PIPING ABOVE CEILING.
- 30 3/4" HOT & COLD WATER PIPING DOWN IN CHASE. CONTINUE TYPE "K" ROLLED COPPER PIPING BELOW SLAB (NO JOINTS BELOW SLAB) AND RISE UP IN HALF WALL. ROUTE 3/4" HEADER FULL SIZE ENTIRE LENGTH OF CHASE. SEE KITCHEN EQUIPMENT IN ARCHITECTURAL KITCHEN PLANS. PROVIDE 1/4" TURN SHUT-OFF VALVE FOR BOTH HOT AND COLD WATER ABOVE SLAB. ROUGH-IN AND FINAL CONNECT PER MANUFACTURER'S INSTRUCTIONS. SEE KITCHEN GENERAL NOTES, SHEET P0.00.
- 31 3/4" HOT & COLD WATER PIPING DOWN IN CHASE. EXTEND 1/2" HOT & COLD TO HAND WASH SINK. CONTINUE W/ TYPE "K" ROLLED COPPER BELOW SLAB (NO JOINTS BELOW SLAB) AND RISE UP AT SINK IN WORKTABLE. CONTRACTOR TO COORDINATE EXACT LOCATION WITH ARCHITECTURAL KITCHEN PLANS. PROVIDE 1/4" TURN SHUT-OFF VALVE FOR BOTH HOT AND COLD WATER ABOVE SLAB. ROUGH-IN AND FINAL CONNECT PER MANUFACTURER'S INSTRUCTIONS. SEE KITCHEN GENERAL NOTES, SHEET P0.00.
- 32 1" COLD WATER DOWN IN CHASE. RUN 1" HEADER FULL SIZE ENTIRE LENGTH OF CHASE. EXTEND 3/4" TO BOTH STEAMER AND TILTING KETTLE. ROUGH-IN AND FINAL CONNECT PER MANUFACTURER'S INSTRUCTIONS. INSTALL ZURN #300 WATER HAMMER ARRESTOR AT EACH END OF THE HEADER PER MANUFACTURER'S INSTRUCTIONS.
- 33 3/4" COLD WATER CONNECTED TO EXISTING WATER PIPING ABOVE CEILING. CONTRACTOR TO FIELD VERIFY EXACT SIZE / LOCATION OF EXISTING PIPING AND PROVIDE 3/4" DOUBLE CHECK BACKFLOW PREVENTER. LOCATE NEW BACKFLOW PREVENTER IN AN ACCESSIBLE LOCATION AND ABIDE BY ALL LOCAL REGULATIONS AND MANUFACTURER'S INSTRUCTIONS.
- 34 EXISTING ICE MAKER TO REMAIN. REMOVE EXISTING COLD WATER PIPING FOR COMPRESSOR HEAT REJECTION. CONTRACTOR TO COORDINATE WITH MECHANICAL FOR CONNECTION OF UNIT TO CHILLED WATER LOOP.
- 35 LOCATION OF EXISTING CEILING MOUNTED RAIN SHOWER HEAD REMOVED DURING DEMOLITION PHASE. CONTRACTOR TO CLEAN & REBUILD HEAD BEFORE INSTALLATION INTO NEW SHOWER. CONTRACTOR TO NOTE THE LOCATION OF THE HEAD IN THE EXISTING SHOWER AND MAINTAIN SIMILAR PLACEMENT.

LOWER LEVEL - GENERAL NOTES

- 1 CONTRACTOR TO CLOSELY COORDINATE WITH STRUCTURAL AND ARCHITECTURAL DRAWINGS PRIOR TO ANY TRENCHING FOR ANY UNDERGROUND PIPING. VERIFY ALL FOOTING LOCATIONS AN ELEVATIONS WITH STRUCTURAL DRAWINGS.
- 2 ALL PLUMBING UTILITY SERVICES FOR DOMESTIC WATER, STORM DRAIN, NATURAL GAS, FIRE PROTECTION, AND SANITARY SEWER ONSITE AND UP TO THE BUILDING ARE PART OF THE CIVIL ENGINEER'S SCOPE OF WORK. SEE CIVIL SITE UTILITY DRAWINGS FOR EXACT PIPE ROUTING, PIPE SIZES, PRESSURES, DETAILS, AND SPECIFICATIONS. ALL SITE UTILITIES SHOWN ON PLUMBING PLANS ARE FOR REFERENCE ONLY AND SHALL BE VERIFIED PER CIVIL DRAWINGS.
- 3 CONTRACTOR TO PROVIDE "PRE-SET" BALANCING VALVES AT ALL HOT WATER RETURN BRANCHES AND PROVIDE AIR BLEED VALVE AT THE HIGHEST POINT.
- 4 PVC PIPING IS PROHIBITED AT ANY LOCATION WITH A POTENTIAL WASTE DISCHARGE TEMPERATURE GREATER THAN 140°F. CONTRACTOR TO PROVIDE TEMPERING DEVICE TO REGULATE DISCHARGE TEMPERATURE DOWN TO AN ACCEPTABLE RANGE OR TO UTILIZE A 10 FOOT SECTION OF CAST IRON PIPE.
- 5 EXISTING HOT WATER HEATER AND ALL ASSOCIATED PUMPS, TANKS, TEMPERING VALVES, AND CONTROL DEVICES TO REMAIN. CONTRACTOR TO RE-CONNECT NEWLY ROUTED HOT WATER PIPING TO EXISTING HOT WATER HEATER, TEMPERING VALVE, AND RETURN PUMP.

Handwritten notes:
 Kitchen Hallway Ceiling
 All gas piping welded above ceiling (house ceiling plan)
 S&S 2" shutoff below ceiling in riser surface mounted directly above ansel valve.
 6" gate valve main riser in building

NOTE: FURNISH AND INSTALL ACOORN SF-70 CHROME THERMOSTATIC TEMPERING VALVE IN THE HOT WATER SUPPLY TO ALL HAND SINKS. SET TEMPERATURE AT 105°F (TYPICAL).



1 LOWER LEVEL FLOOR PLAN - DOMESTIC WATER & GAS
1/8" = 1'-0"

ADDITION AND RENOVATION TO PLEASANT VALLEY COUNTRY CLUB
CLUBHOUSE
 1 PLEASANT VALLEY DRIVE
 LITTLE ROCK, ARKANSAS 72212

REVISIONS	
1	ASI 05 08-25-23
2	RFP 03 11-16-23

PROJECT NO. 21075
DATE: June 21, 2023
LOWER LEVEL FLOOR PLAN - DOMESTIC WATER & GAS
P1.02-A