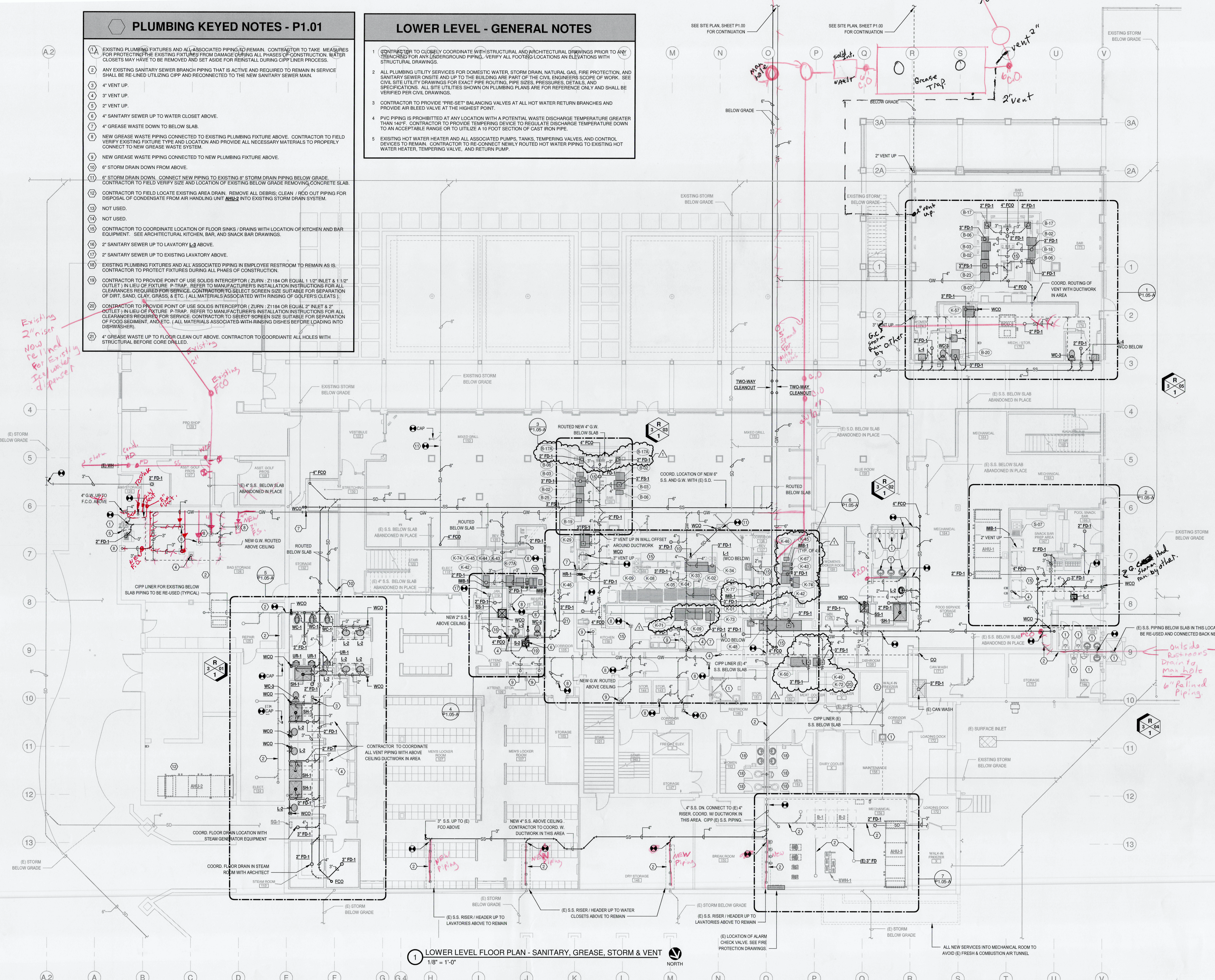


PLUMBING KEYED NOTES - P1.01

1. EXISTING PLUMBING FIXTURES AND ALL ASSOCIATED PIPING TO REMAIN. CONTRACTOR TO TAKE MEASURES FOR PROTECTING THE EXISTING FIXTURES FROM DAMAGE DURING ALL PHASES OF CONSTRUCTION. WATER CLOSETS MAY HAVE TO BE REMOVED AND SET ASIDE FOR REINSTALL DURING CIPP LINER PROCESS.
2. ANY EXISTING SANITARY SEWER BRANCH PIPING THAT IS ACTIVE AND REQUIRED TO REMAIN IN SERVICE SHALL BE RE-LINED UTILIZING CIPP AND RECONNECTED TO THE NEW SANITARY SEWER MAIN.
3. 4" VENT UP.
4. 3" VENT UP.
5. 2" VENT UP.
6. 4" SANITARY SEWER UP TO WATER CLOSET ABOVE.
7. 4" GREASE WASTE DOWN TO BELOW SLAB.
8. NEW GREASE WASTE PIPING CONNECTED TO EXISTING PLUMBING FIXTURE ABOVE. CONTRACTOR TO FIELD VERIFY EXISTING FIXTURE TYPE AND LOCATION AND PROVIDE ALL NECESSARY MATERIALS TO PROPERLY CONNECT TO NEW GREASE WASTE SYSTEM.
9. NEW GREASE WASTE PIPING CONNECTED TO NEW PLUMBING FIXTURE ABOVE.
10. 6" STORM DRAIN DOWN FROM ABOVE.
11. 8" STORM DRAIN DOWN. CONNECT NEW PIPING TO EXISTING 8" STORM DRAIN PIPING BELOW GRADE. CONTRACTOR TO FIELD VERIFY SIZE AND LOCATION OF EXISTING BELOW GRADE REMOVING CONCRETE SLAB.
12. CONTRACTOR TO FIELD LOCATE EXISTING AREA DRAIN. REMOVE ALL DEBRIS, CLEAN / FLOOD OUT PIPING FOR DISPOSAL OF CONDENSATE FROM AIR HANDLING UNIT AHU-2 INTO EXISTING STORM DRAIN SYSTEM.
13. NOT USED.
14. NOT USED.
15. CONTRACTOR TO COORDINATE LOCATION OF FLOOR SINKS / DRAINS WITH LOCATION OF KITCHEN AND BAR EQUIPMENT. SEE ARCHITECTURAL KITCHEN, BAR, AND SNACK BAR DRAWINGS.
16. 2" SANITARY SEWER UP TO LAVATORY L-3 ABOVE.
17. 2" SANITARY SEWER UP TO EXISTING LAVATORY ABOVE.
18. EXISTING PLUMBING FIXTURES AND ALL ASSOCIATED PIPING IN EMPLOYEE RESTROOM TO REMAIN AS IS. CONTRACTOR TO PROTECT FIXTURES DURING ALL PHASES OF CONSTRUCTION.
19. CONTRACTOR TO PROVIDE POINT OF USE SOLIDS INTERCEPTOR (ZURN: Z1184 OR EQUAL 1 1/2" INLET & 1 1/2" OUTLET) IN LIEU OF FIXTURE P-TRAP. REFER TO MANUFACTURER'S INSTALLATION INSTRUCTIONS FOR ALL CLEARANCES REQUIRED FOR SERVICE. CONTRACTOR TO SELECT SCREEN SIZE SUITABLE FOR SEPARATION OF DIRT, SAND, CLAY, GRASS, & ETC. (ALL MATERIALS ASSOCIATED WITH RINSING OF GOLFERS'S CLEATS).
20. CONTRACTOR TO PROVIDE POINT OF USE SOLIDS INTERCEPTOR (ZURN: Z1184 OR EQUAL 2" INLET & 2" OUTLET) IN LIEU OF FIXTURE P-TRAP. REFER TO MANUFACTURER'S INSTALLATION INSTRUCTIONS FOR ALL CLEARANCES REQUIRED FOR SERVICE. CONTRACTOR TO SELECT SCREEN SIZE SUITABLE FOR SEPARATION OF FOOD SEDIMENT, AND ETC. (ALL MATERIALS ASSOCIATED WITH RINSING DISHES BEFORE LOADING IN DISHWASHER).
21. 4" GREASE WASTE UP TO FLOOR CLEAN OUT ABOVE. CONTRACTOR TO COORDINATE ALL HOLES WITH STRUCTURAL BEFORE CORE DRILLED.

LOWER LEVEL - GENERAL NOTES

1. CONTRACTOR TO CLOSELY COORDINATE WITH STRUCTURAL AND ARCHITECTURAL DRAWINGS PRIOR TO ANY TRENCHING FOR ANY UNDERGROUND PIPING. VERIFY ALL FOOTING LOCATIONS AN ELEVATIONS WITH STRUCTURAL DRAWINGS.
2. ALL PLUMBING UTILITY SERVICES FOR DOMESTIC WATER, STORM DRAIN, NATURAL GAS, FIRE PROTECTION, AND SANITARY SEWER ON SITE AND UP TO THE BUILDING ARE PART OF THE CIVIL ENGINEER'S SCOPE OF WORK. SEE CIVIL SITE UTILITY DRAWINGS FOR EXACT PIPE ROUTING, PIPE SIZES, PRESSURES, DETAILS, AND SPECIFICATIONS. ALL SITE UTILITIES SHOWN ON PLUMBING PLANS ARE FOR REFERENCE ONLY AND SHALL BE VERIFIED PER CIVIL DRAWINGS.
3. CONTRACTOR TO PROVIDE "PRE-SET" BALANCING VALVES AT ALL HOT WATER RETURN BRANCHES AND PROVIDE AIR BLEED VALVE AT THE HIGHEST POINT.
4. PVC PIPING IS PROHIBITED AT ANY LOCATION WITH A POTENTIAL WASTE DISCHARGE TEMPERATURE GREATER THAN 140°F. CONTRACTOR TO PROVIDE TEMPERING DEVICE TO REGULATE DISCHARGE TEMPERATURE DOWN TO AN ACCEPTABLE RANGE OR TO UTILIZE A 10 FOOT SECTION OF CAST IRON PIPE.
5. EXISTING HOT WATER HEATER AND ALL ASSOCIATED PUMPS, TANKS, TEMPERING VALVES, AND CONTROL DEVICES TO REMAIN. CONTRACTOR TO RE-CONNECT NEWLY ROUTED HOT WATER PIPING TO EXISTING HOT WATER HEATER, TEMPERING VALVE, AND RETURN PUMP.



1 LOWER LEVEL FLOOR PLAN - SANITARY, GREASE, STORM & VENT
1/8" = 1'-0"

SCM ARCHITECTS PLLC
 1400 KIRK RD., SUITE 220
 LITTLE ROCK, AR 72223
 LR: (501) 224-9855 FAX: (479) 966-4777
 www.scmarchitects.com

REGISTERED PROFESSIONAL ENGINEER
 STATE OF ARKANSAS
 LICENSE NO. 12223

CORPORATE REGISTRATION
 FETIT & FETIT CONSULTING ENGINEERS, INC.
 INC. NO. 78

PERMIT SET

ADDITION AND RENOVATION TO PLEASANT VALLEY COUNTRY CLUB
CLUBHOUSE
 1 PLEASANT VALLEY DRIVE
 LITTLE ROCK, ARKANSAS 72212

REVISIONS
 1 ASI 05 08-25-23

PROJECT NO. 21075
 DATE: June 21, 2023
 LOWER LEVEL FLOOR PLAN - SANITARY, VENT, & STORM
P1.01-A

SCM ARCHITECTS PLLC