

PETTIT & PETTIT
CONSULTING
ENGINEERS,
INC.
No. 78
PETTIT & PETTIT
CONSULTING ENGINEERS, INC.

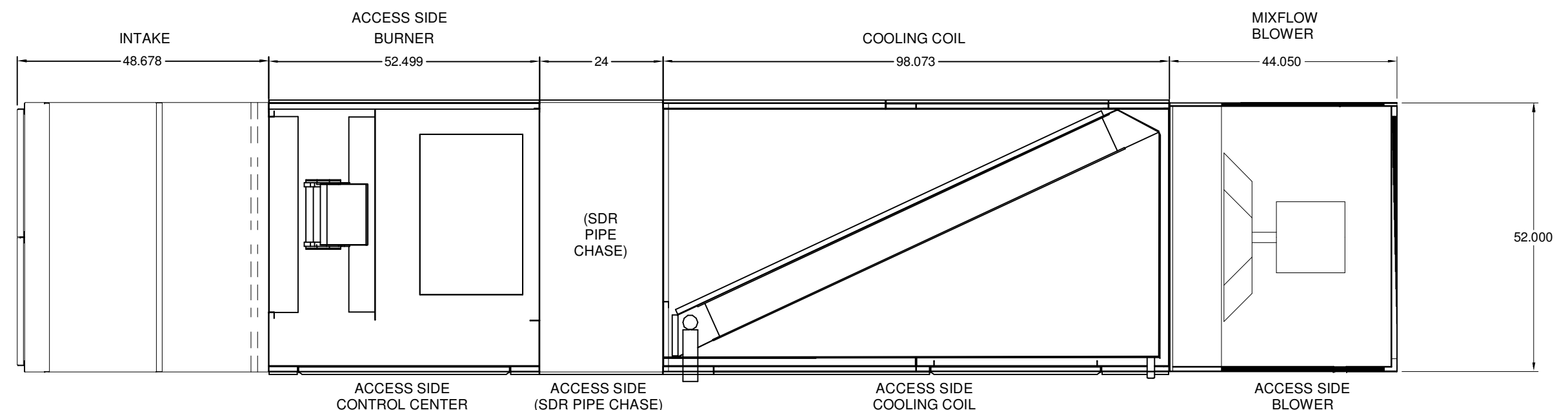
PERMIT SET

EQUIPMENT SCHEDULE											
Tempered Make-Up Air Unit					Mark: MAU-2						
Qty	Greenheck Model	Volume	External SP	Total SP	FRPM	Operating Power	Weight				
1	GD7-P124-H92-MF	8,048 CFM	0.92 in. wg	2.327 in. wg	1262	5.21 hp	2,339 lb				
Motor Information											
Size	VCP	Episcopes	Motor Efficiency	Motor RPM	Windings	MCA	MOP				
10 hp	460/603	ODP	No	1725	1	18.4	30				
Heating											
Type	Gas Type	Winter DB	Max Δ	Max LAT	Input	Output	Efficiency	Connection Gas Pressure	Building Gas Access		
Direct Gas	Natural	15.0 F	55.0 F	70.0 F	519.6 MBH	476.1 MBH	92%	1"	1/2 PSI		
Cooling											
Cooling Type	Coil Model	Flows Deep	Fins Per Inch	Face Velocity	Total Energy	Sensible Energy	Leaving Dry Bulb	Leaving Wet Bulb			
Chilled Water	Custom	6	9	491 ft/min	345.7 MBH	346.7 MBH	59.0 F	59.6 F			
Fluid Type	Entering Fluid	Leaving Fluid	Percent Glycol	Fluid Flow	Fluid Pressure Drop	Connection Size					
Water	42 F	56.0 F	0	106.1 GPM	6.3 ft wg						
Outlet Sound Power by Octave Band											
	62.5	125	250	500	1000	2000	4000	8000	LWA	dBA	Sones
	82	79.5	79	81.8	81.8	79.7	80.6	74	87.2	76.2	26.1

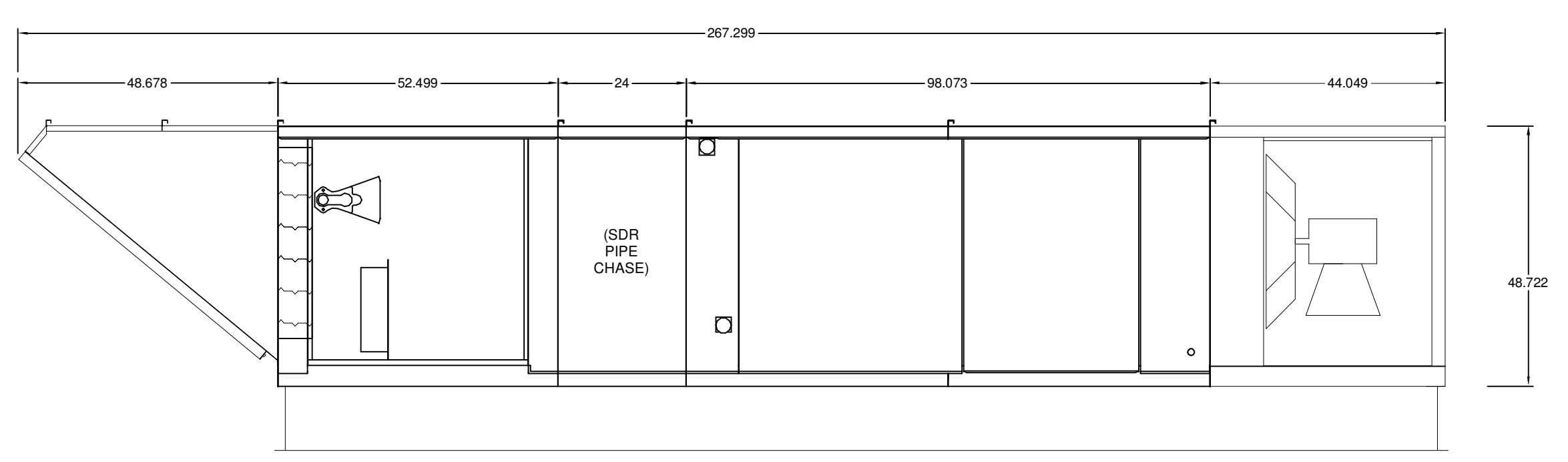
OPTIONS AND ACCESSORIES

Air Flow Arrangement: Variable Volume
Weatherhood: Aluminum Mesh, 20x25x2 - (6)
Damper: Inlet
Outdoor Air Intake Position: End
Discharge Position: End
Coating: Thermactor - Concrete Gray (PAL 7023)
Coating: Coil Coating - None
Insulation: Double Wall - Tempering On
Supply Fan Control: VFD
VFD Control: External 0-10 VDC
Inlet Access
Access Side: Right-Hand
Control Center
Heat Inlet Air Sensor
Cool Inlet Air Sensor
Unit Controls: Terminal Strip
Temperature Control: Discharge
Direct Gas Options/Accessories
Approvals: ETL
FMI Compliant
Flame Sensing: Flame Rod

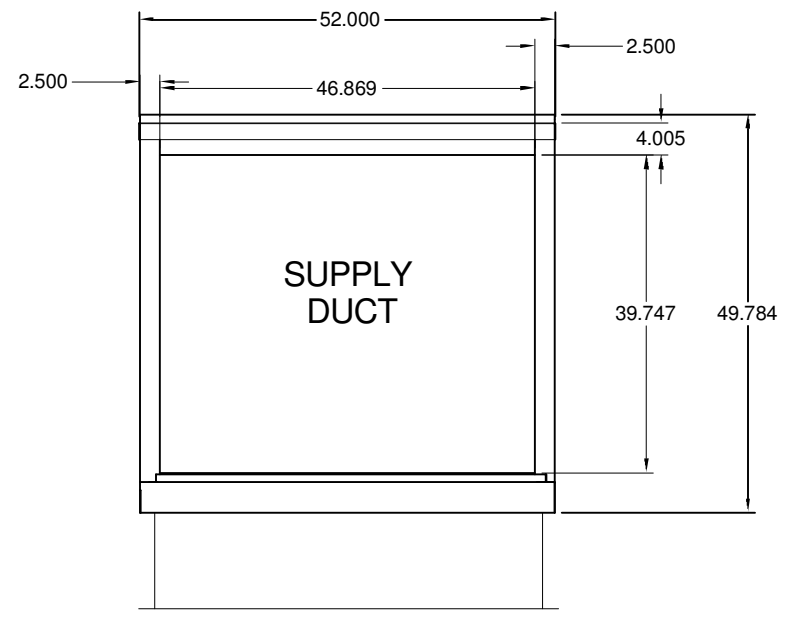
NOTE: 24" ACCESS SECTION TO BE ADDED TO THIS UNIT PER SPECIAL DESIGN REQUEST (SDR) AT THE FACTORY LEVEL TO SERVE AS THE CHILLED WATER PIPING CHASE. PIPING TO BE ROUTED TO THE SDR ACCESS SECTION, PIPING CHASE UP THROUGH THE EQUIPMENT ROOF CURB BY THE CONTRACTOR FOR FINAL CONNECTION TO THE EQUIPMENT COOLING COIL. CHILLED WATER PIPING WITHIN THE MAKE-UP AIR UNIT TO BE INSULATED AND HEAT TRACED.



PLAN VIEW



ELEVATION VIEW



END VIEW

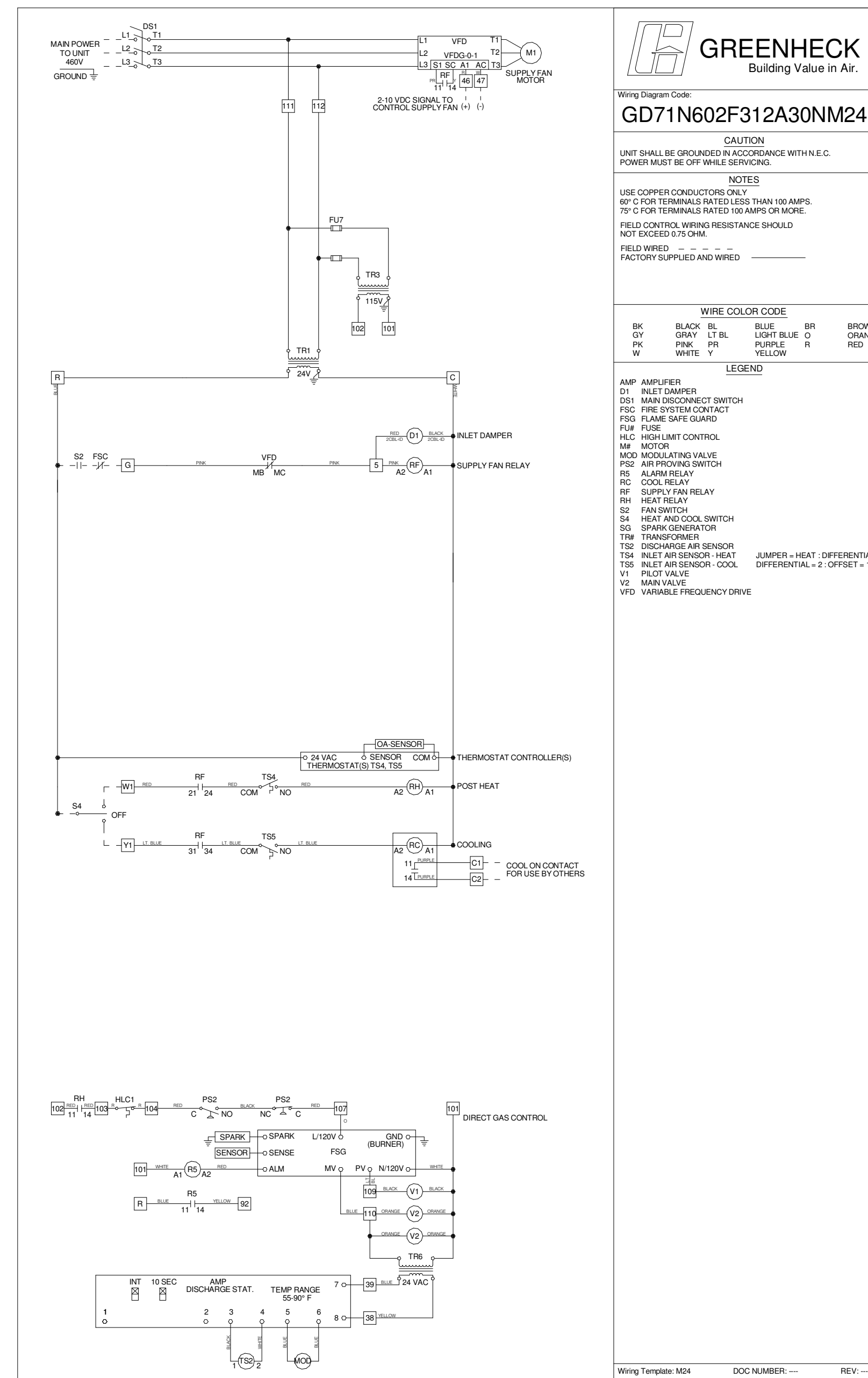
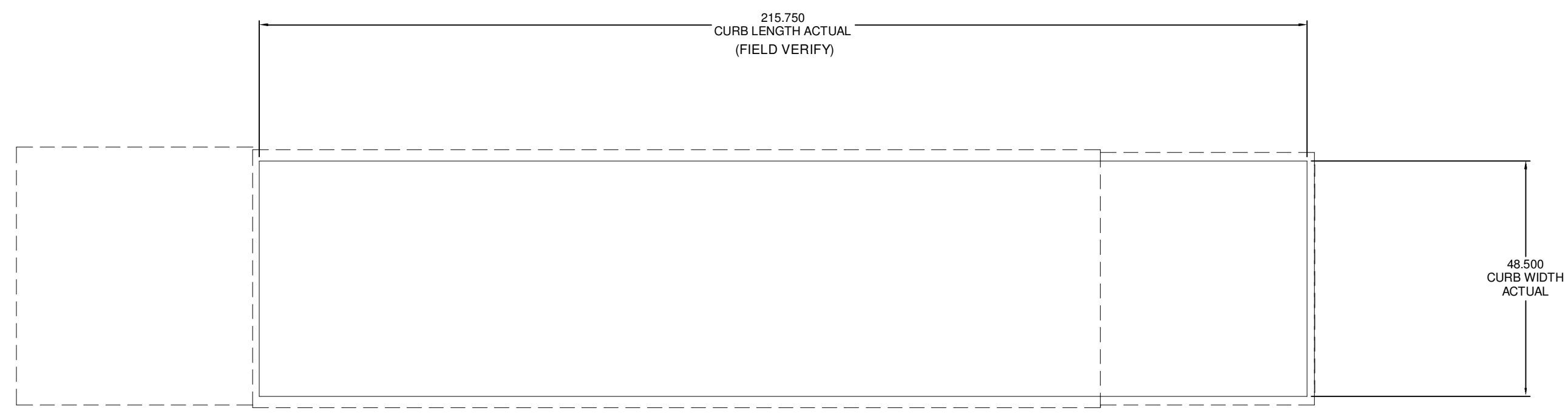
NOTE: Roof Opening Requirements:

Minimum Roof Opening: The minimum roof opening size is the illustrated duct diameter plus 0.25 in. on all sides.
For example: If the duct size is 14 x 14 in. square, the minimum roof opening size is 14.5 x 14.5 in. square.

Maximum Roof Opening: There must be a minimum perimeter of 1.75 in. between the roof opening and the roof curb.
For example: If the roof curb is 75 x 30 in. square, the maximum roof opening is 71.5 x 26.5 in. inches square.

NOTE: The weatherhood and filter sections of the make-up air unit are not supported by the curb. This is by design, in order to help alleviate water infiltration issues.

FOOTPRINT



GREENHECK
Building Value in Air.

Model: **GD71N602F312A30NM24**

CAUTION:
UNIT SHALL BE GROUNDED IN ACCORDANCE WITH N.E.C.
POWER MUST BE OFF WHILE SERVICING.

NOTES:
USE COPPER CONDUCTORS ONLY
90°C (200°F) TERMINALS RATED LESS THAN 100 AMP.
90°C (200°F) TERMINALS RATED 100 AMP OR MORE.
FIELD CONTROL WIRING RESISTANCE SHOULD NOT EXCEED 0.5 OHMS.
FIELD WIRED: ---
FACTORY SUPPLIED AND WIRED: _____

WIRE COLOR CODE:
BR - BLACK
BK - BLACK
GR - GRAY
WH - WHITE
BL - BLUE
LT - LIGHT BLUE
OR - ORANGE
RD - RED
PK - PINK
PR - PURPLE
YL - YELLOW

LEGEND:
AMP - AMP/PER
DI - DIET DAMPER
DS - MAIN DISCONNECT SWITCH
FC - FUSE
FSC - FUSE SCHEDULE CONTROL
FV - FUSE VALVE
M - MOTOR
M2 - MODULATED VALVE
M3 - MODULATED VALVE
M4 - MODULATED VALVE
M5 - MODULATED VALVE
M6 - MODULATED VALVE
M7 - MODULATED VALVE
M8 - MODULATED VALVE
M9 - MODULATED VALVE
M10 - MODULATED VALVE
M11 - MODULATED VALVE
M12 - MODULATED VALVE
M13 - MODULATED VALVE
M14 - MODULATED VALVE
M15 - MODULATED VALVE
M16 - MODULATED VALVE
M17 - MODULATED VALVE
M18 - MODULATED VALVE
M19 - MODULATED VALVE
M20 - MODULATED VALVE
M21 - MODULATED VALVE
M22 - MODULATED VALVE
M23 - MODULATED VALVE
M24 - MODULATED VALVE
M25 - MODULATED VALVE
M26 - MODULATED VALVE
M27 - MODULATED VALVE
M28 - MODULATED VALVE
M29 - MODULATED VALVE
M30 - MODULATED VALVE
M31 - MODULATED VALVE
M32 - MODULATED VALVE
M33 - MODULATED VALVE
M34 - MODULATED VALVE
M35 - MODULATED VALVE
M36 - MODULATED VALVE
M37 - MODULATED VALVE
M38 - MODULATED VALVE
M39 - MODULATED VALVE
M40 - MODULATED VALVE
M41 - MODULATED VALVE
M42 - MODULATED VALVE
M43 - MODULATED VALVE
M44 - MODULATED VALVE
M45 - MODULATED VALVE
M46 - MODULATED VALVE
M47 - MODULATED VALVE
M48 - MODULATED VALVE
M49 - MODULATED VALVE
M50 - MODULATED VALVE
M51 - MODULATED VALVE
M52 - MODULATED VALVE
M53 - MODULATED VALVE
M54 - MODULATED VALVE
M55 - MODULATED VALVE
M56 - MODULATED VALVE
M57 - MODULATED VALVE
M58 - MODULATED VALVE
M59 - MODULATED VALVE
M60 - MODULATED VALVE
M61 - MODULATED VALVE
M62 - MODULATED VALVE
M63 - MODULATED VALVE
M64 - MODULATED VALVE
M65 - MODULATED VALVE
M66 - MODULATED VALVE
M67 - MODULATED VALVE
M68 - MODULATED VALVE
M69 - MODULATED VALVE
M70 - MODULATED VALVE
M71 - MODULATED VALVE
M72 - MODULATED VALVE
M73 - MODULATED VALVE
M74 - MODULATED VALVE
M75 - MODULATED VALVE
M76 - MODULATED VALVE
M77 - MODULATED VALVE
M78 - MODULATED VALVE
M79 - MODULATED VALVE
M80 - MODULATED VALVE
M81 - MODULATED VALVE
M82 - MODULATED VALVE
M83 - MODULATED VALVE
M84 - MODULATED VALVE
M85 - MODULATED VALVE
M86 - MODULATED VALVE
M87 - MODULATED VALVE
M88 - MODULATED VALVE
M89 - MODULATED VALVE
M90 - MODULATED VALVE
M91 - MODULATED VALVE
M92 - MODULATED VALVE
M93 - MODULATED VALVE
M94 - MODULATED VALVE
M95 - MODULATED VALVE
M96 - MODULATED VALVE
M97 - MODULATED VALVE
M98 - MODULATED VALVE
M99 - MODULATED VALVE
M100 - MODULATED VALVE

PROJECT: 11/22/2022
MARK: KMAU

PLEASANT VALLEY COUNTRY CLUB HOOD

UL NSF

GREENHECK

PROJECT NO. 21075
DATE: June 21, 2023

REVISIONS

ADDITION AND RENOVATION TO PLEASANT VALLEY COUNTRY CLUB
CLUBHOUSE
1 PLEASANT VALLEY DRIVE
LITTLE ROCK, ARKANSAS 72212

1 MAU-2 DETAILS
NOT TO SCALE

KITCHEN DETAILS
M6.03-A