

HVAC GENERAL NOTES

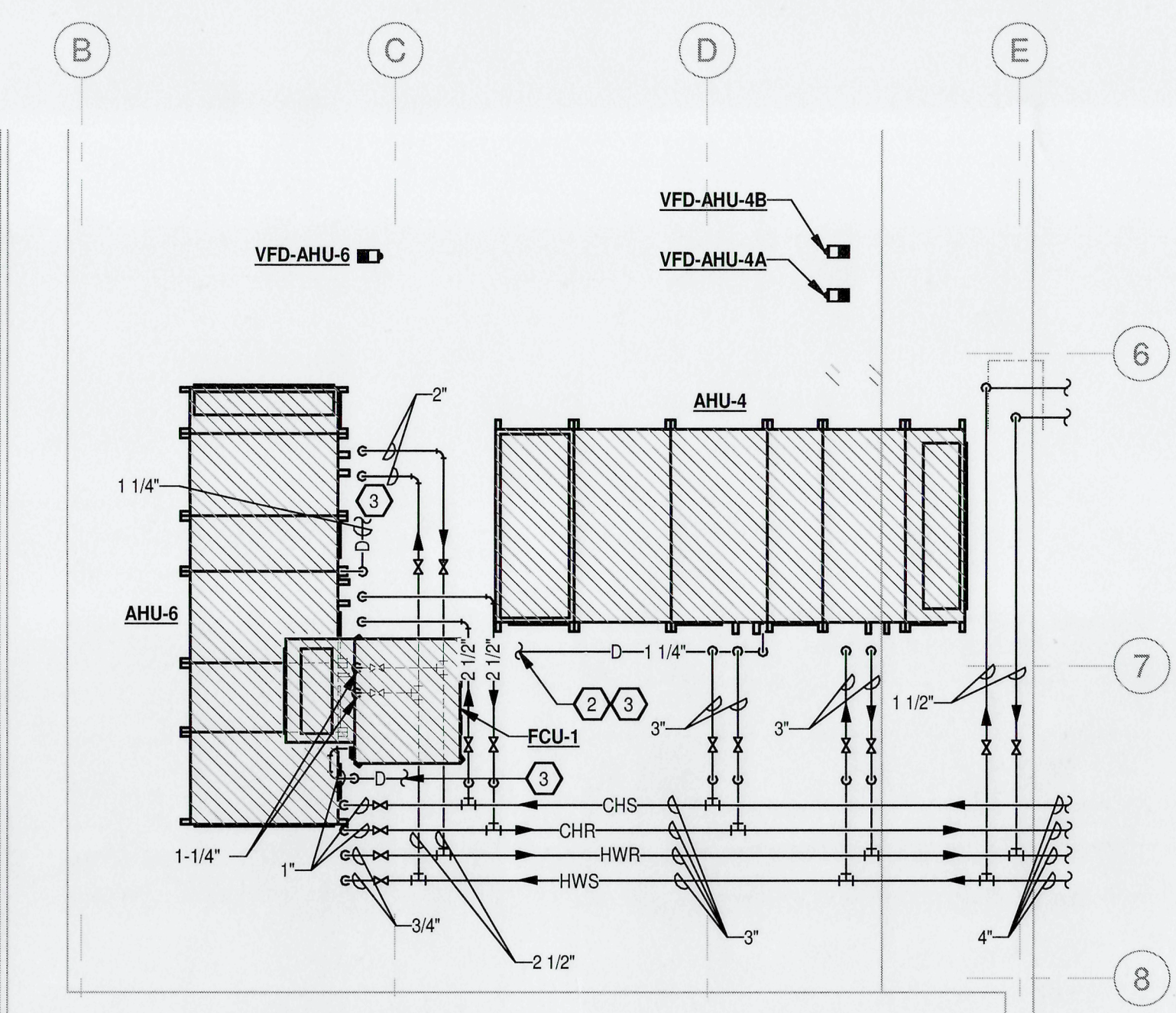
1. ALL LIGHTER SOLID LINES REPRESENT PIPING, DUCTWORK, EQUIPMENT, ETC. TO REMAIN.
2. ALL DARKER SOLID LINES REPRESENT NEW PIPING, DUCTWORK, EQUIPMENT, ETC.
3. FIELD VERIFY EXACT SIZE AND LOCATION OF ALL EXISTING ITEMS SHOWN ON THIS PLAN THAT ARE TO BE CONNECTED TO.

HVAC COORDINATION NOTES

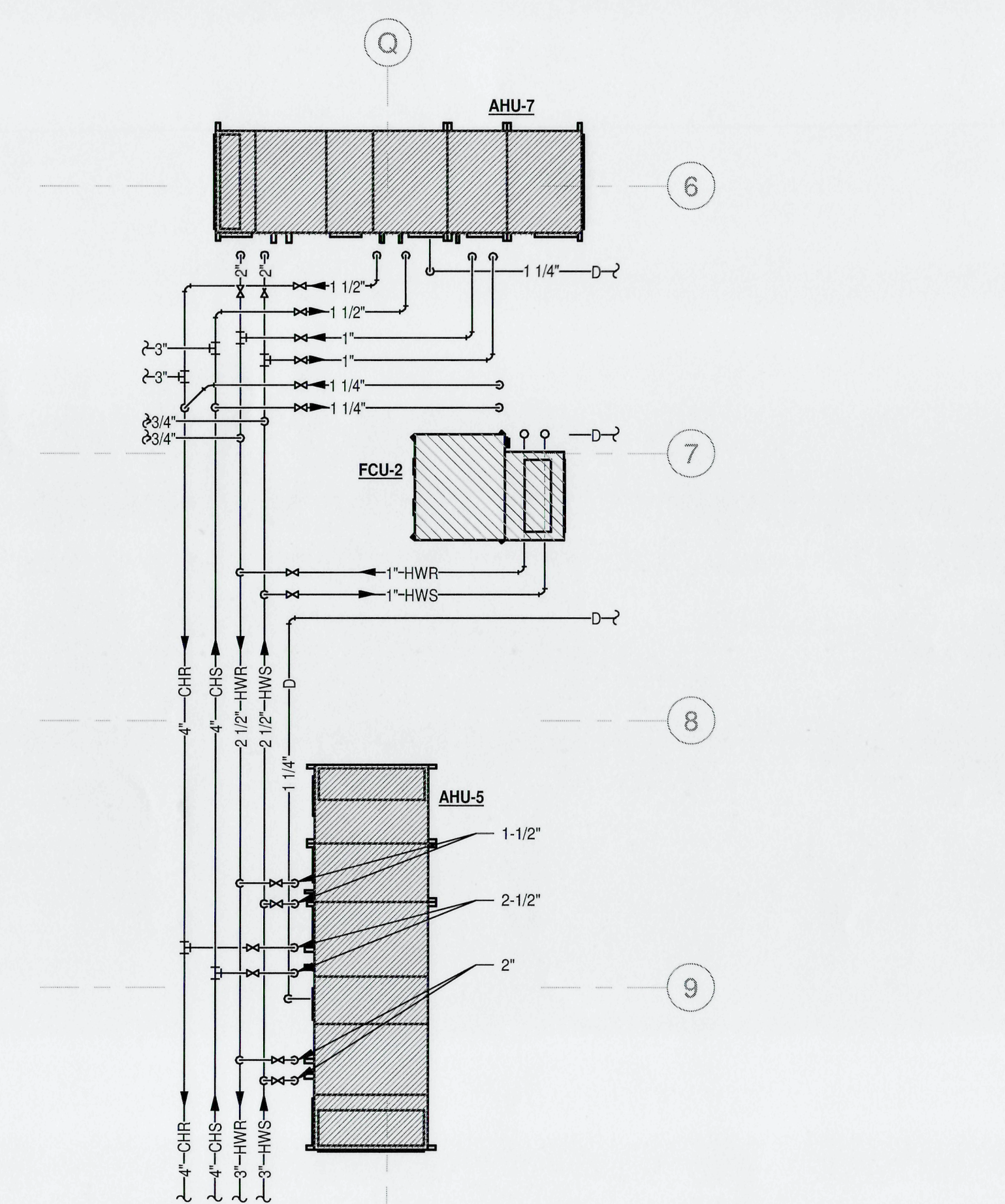
1. DUE TO LOW FLOOR-TO-FLOOR ELEVATIONS AND TIGHT CLEARANCES FOR THIS PROJECT, CONTRACTOR SHALL FULLY REVIEW THE DRAWINGS AND SHALL FIELD COORDINATE CLOSELY WITH G.C. AND ALL OTHER TRADES TO ENSURE HVAC EQUIPMENT, DUCTWORK, PIPING, ETC. IS INSTALLED IN A TIMELY MANNER AND WITH A COORDINATED TEAM EFFORT TO HELP AVOID POTENTIAL CONFLICTS WITH OTHER TRADES.
2. DUCTWORK AND PIPING SHALL BE ROUTED HIGH THROUGH THE ACCESSIBLE MANSARD ROOF AREAS. COORDINATE WITH ALL TRADES TO ENSURE PROPER WALKING SPACE FOR ACCESS IS MAINTAINED.

HVAC KEYED NOTES

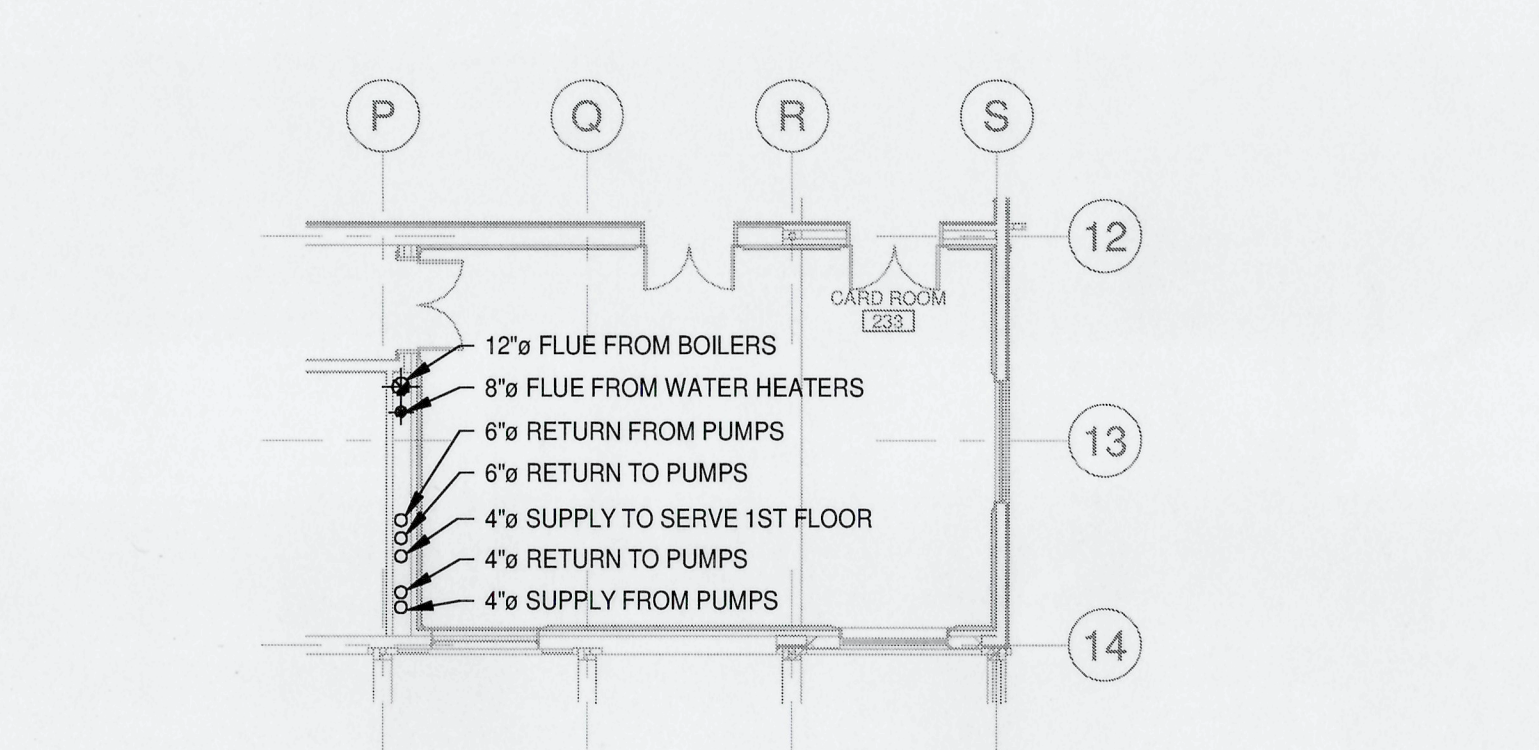
1. PROVIDE UNIT PIPING WITH AUXILIARY DRAIN PAN BELOW PIPING WITH FLOAT SWITCH AND ALARM TO BUILDING AUTOMATION SYSTEM (BAS). PROVIDE ACCESS DOOR FOR PIPING SERVICE.
2. COORDINATE CONDENSATE DRAIN PIPING PENETRATION OF NEW STRUCTURAL BEAM AT THIS APPROXIMATE LOCATION WITH ARCHITECT'S STRUCTURAL ENGINEER.
3. FIELD ROUTE CONDENSATE DRAIN PIPING FULL SIZE OF UNIT CONNECTION TO NEAREST EXISTING ROOF DRAIN LOCATION AT THIS APPROXIMATE LOCATION. RE: PLUMBING FOR EXACT LOCATION.



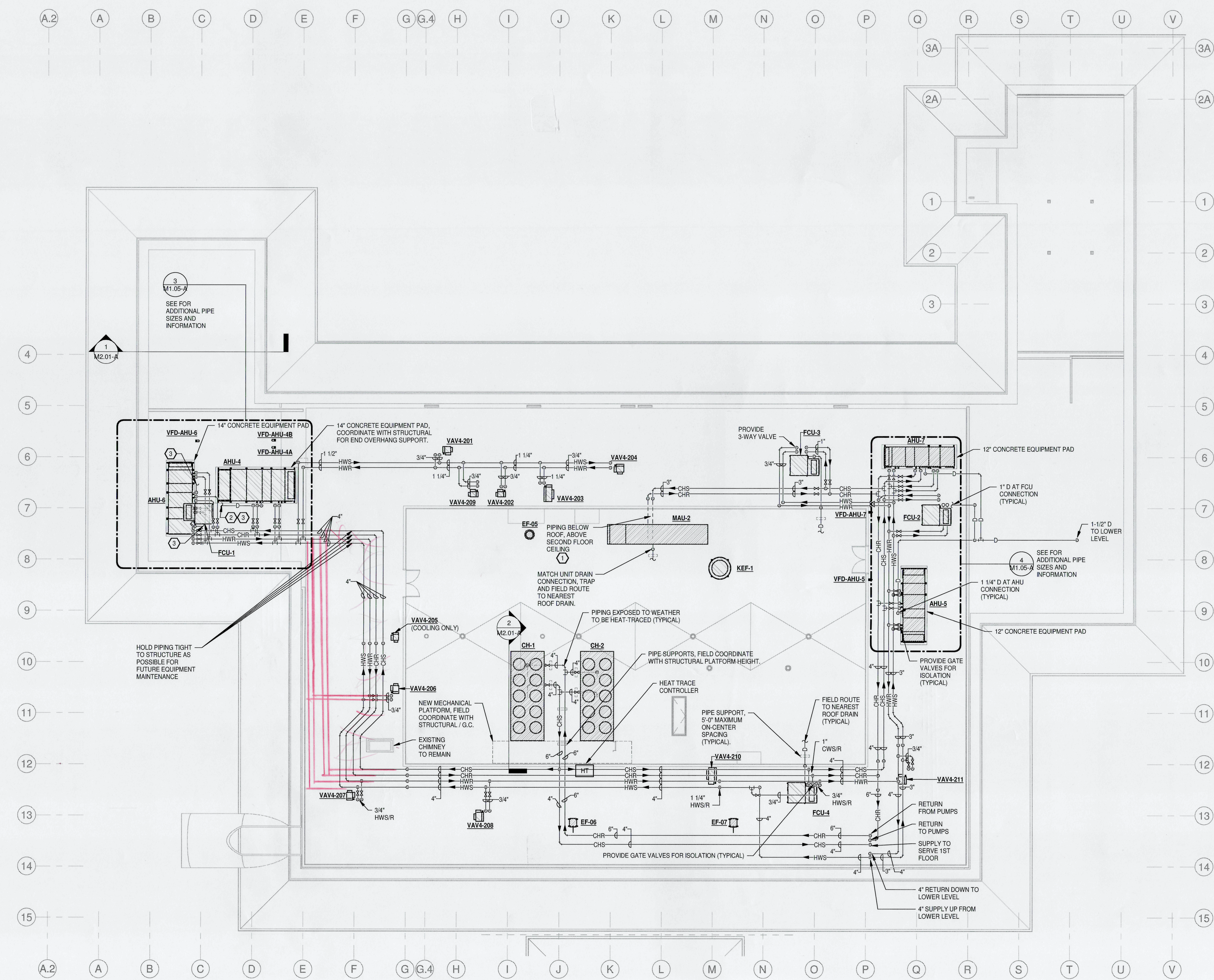
3 ENLARGED AHU-4 & 6 PLAN - HVAC PIPING
3/16" = 1'-0"



4 ENLARGED AHU-5 & 7 PLAN - HVAC PIPING
3/16" = 1'-0"



2 UPPER LEVEL FLOOR PLAN - HVAC PIPING
3/32" = 1'-0"



1 ROOF PLAN - HVAC PIPING
3/32" = 1'-0"