

HVAC GENERAL NOTES

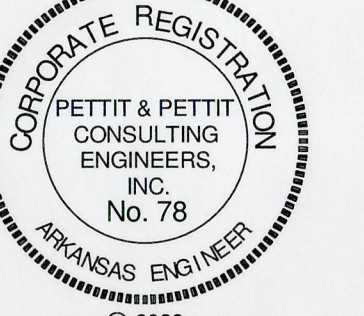
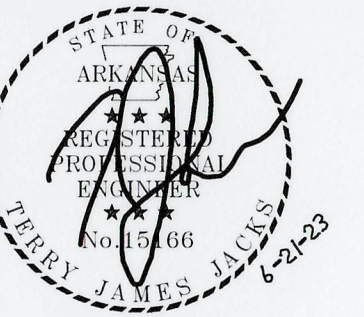
1. ALL LIGHTER SOLID LINES REPRESENT PIPING, DUCTWORK, EQUIPMENT, ETC. TO REMAIN.
2. ALL DARKER SOLID LINES REPRESENT NEW PIPING, DUCTWORK, EQUIPMENT, ETC.
3. FIELD VERIFY EXACT SIZE AND LOCATION OF ALL EXISTING ITEMS SHOWN ON THIS PLAN THAT ARE TO BE CONNECTED TO.

HVAC COORDINATION NOTES

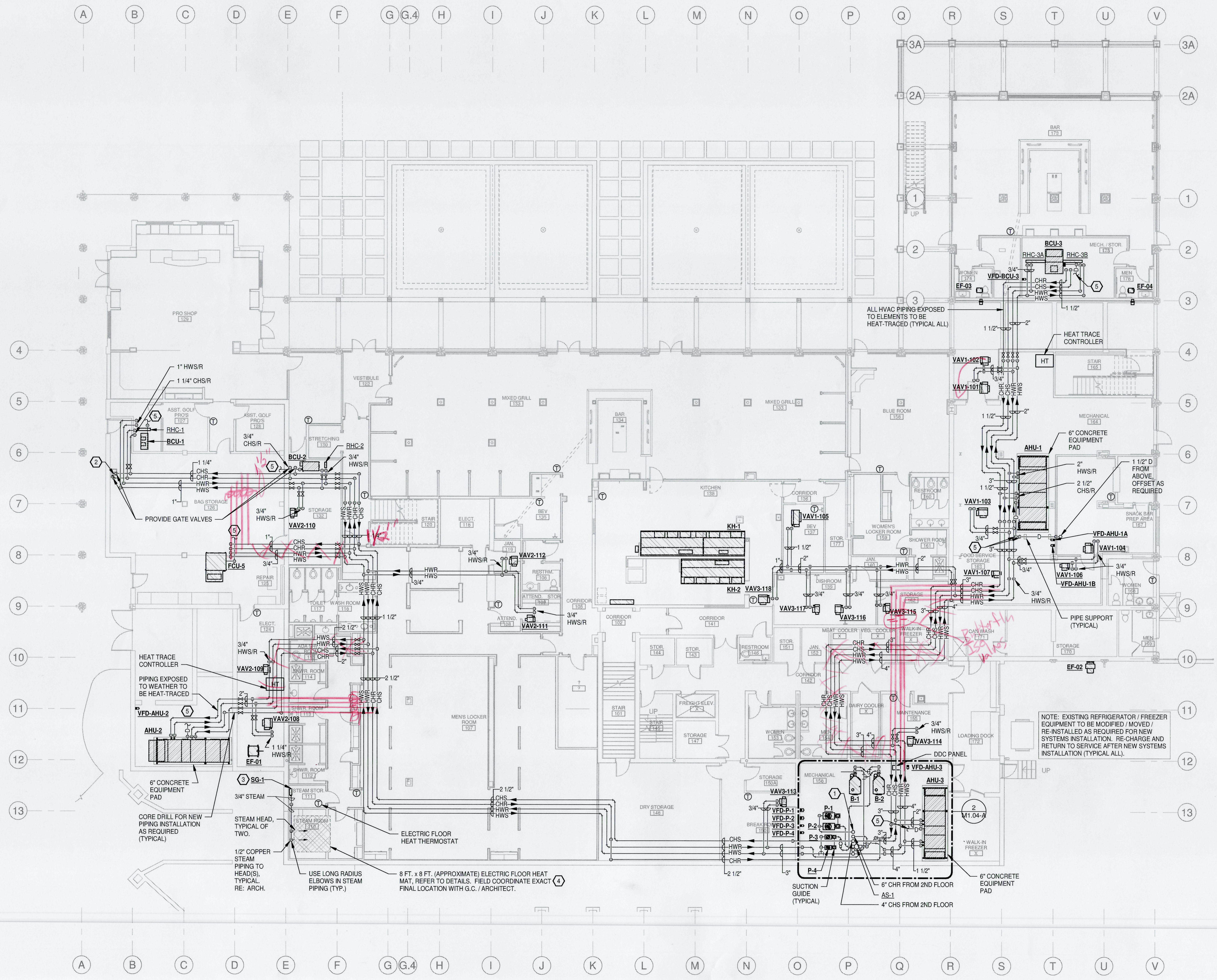
1. DUE TO LOW FLOOR-TO-FLOOR ELEVATIONS AND TIGHT CLEARANCES FOR THIS PROJECT, CONTRACTOR SHALL FULLY REVIEW THE DRAWINGS AND SHALL FIELD COORDINATE CLOSELY WITH G.C. AND ALL OTHER TRADES TO ENSURE HVAC EQUIPMENT, DUCTWORK, PIPING, ETC. IS INSTALLED IN A TIMELY MANNER AND WITH A COORDINATED TEAM EFFORT TO HELP AVOID POTENTIAL CONFLICTS WITH OTHER TRADES.

HVAC KEYED NOTES

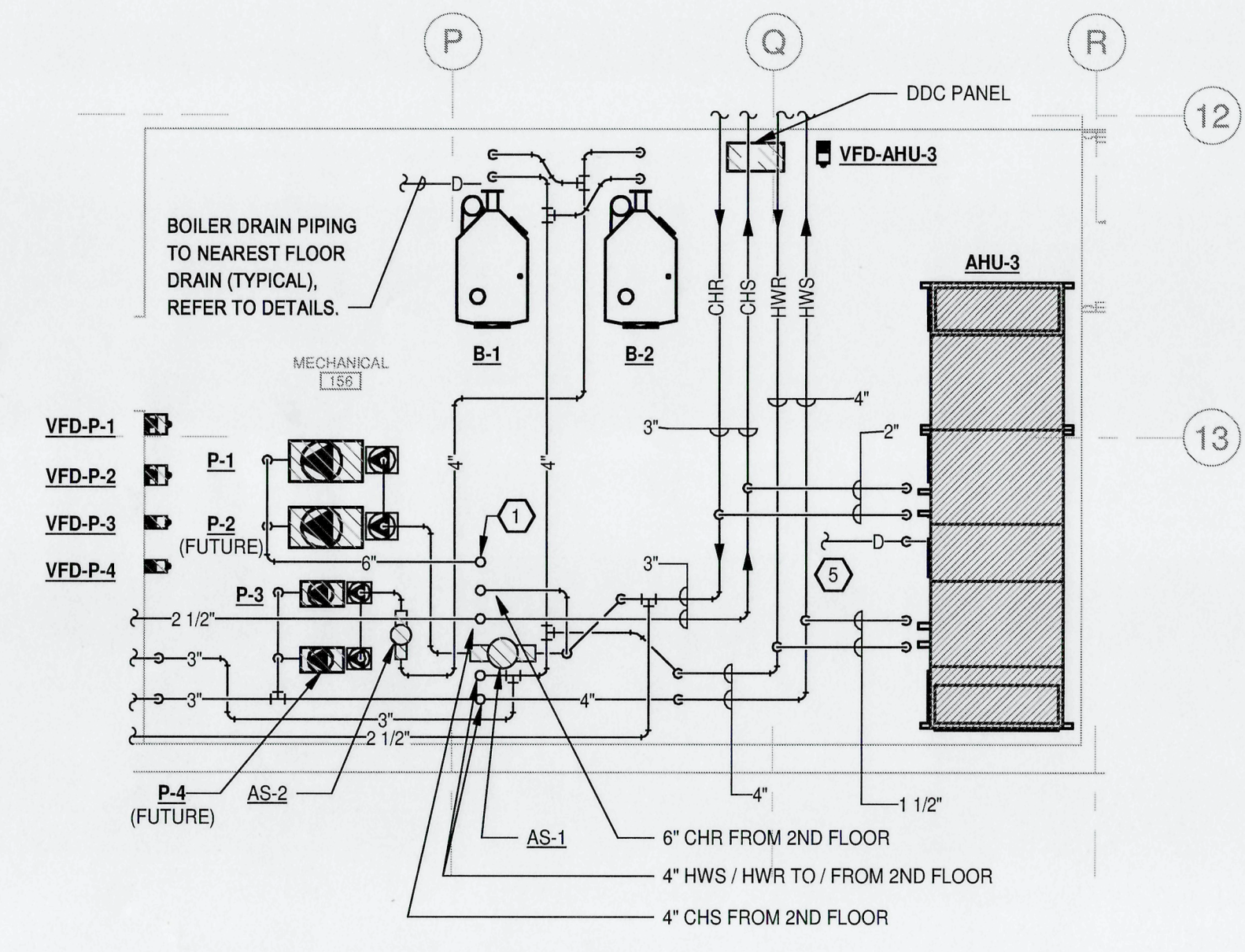
1. 6" CHR PIPING UP TO CHILLERS.
2. 3/4" CHS/CHR PIPING DOWN TO EXISTING ICE MAKER CONDENSER UNIT. PROVIDE SHUT-OFF VALVES AND FLOW BALANCING VALVE (5 GPM, FIELD VERIFY).
3. FURNISH AND INSTALL STEAM GENERATOR EQUIPMENT SQ-1 EQUAL TO AMEREC MODEL AK-14, 13.6 KW, 208V / 3 PHASE, 50A MOCB. PROVIDE WITH THREE ELEMENT TANK ASSEMBLY, THREE INTERNAL PROBES, INTERNAL CONTROL CIRCUIT ASSEMBLY, ELECTRICAL TERMINAL BLOCKS, AND FACTORY GENERATOR CIRCUIT BREAKER. FURNISH AND INSTALL ACCESSORIES TO INCLUDE THE FACTORY RECOMMENDED GLACIER PACKAGE, INCLUDING EXTERNAL WATERPROOF SURFACE MOUNT K2 TOUCHSCREEN CONTROLS, COMFORTLO STEAM HEAD, 3/4" AUTO DRAIN VALVE, AND DRIP PAN. PROVIDE FACTORY RECOMMENDED 3/4" 10 PSI PRESSURE RELIEF VALVE, AND ADDITIONAL SECOND COMFORTLO STEAM HEAD AS RECOMMENDED BY EQUIPMENT MANUFACTURER FOR STEAM GENERATOR SIZE. PROVIDE STEAM ROOM THERMISTOR / ROOM HUMIDITY SENSOR AS RECOMMENDED BY MANUFACTURER FOR ROOM TEMPERATURE SENSING. FIELD COORDINATE EXACT LOCATIONS WITH ARCHITECT AND STEAM ROOM MANUFACTURER. FIELD COORDINATE FINAL STEAM HEAD INSTALLATION LOCATIONS WITH ARCHITECT AND STEAM ROOM MANUFACTURER. FOLLOW ALL MANUFACTURER'S INSTALLATION RECOMMENDATIONS FOR EQUIPMENT AND ACCESSORIES. FINAL COLOR COORDINATION TO BE PER ARCHITECT, PROVIDE FACTORY COLOR CHIP CHART FOR ARCHITECT'S SELECTION. PROVIDE ADDITIONAL 3/8" WATER INLET AND 3/4" RELIEF / DRAIN SHUT-OFF VALVES PER MANUFACTURER'S RECOMMENDATIONS. TERMINATE DRAIN AND PRESSURE RELIEF PIPING PER AHJ AND LOCAL CODE. INSULATE ALL STEAM PIPING FROM GENERATOR TO STEAM HEADS.
4. FURNISH AND INSTALL NEW ELECTRIC FLOOR HEATING SYSTEM UNDER PRE-MANUFACTURED STEAM ROOM FLOOR SYSTEM (STEAM ROOM SYSTEM PROVIDED BY OTHERS) EQUAL TO WENT NEUHAT MESH. MESH ELECTRIC FLOOR HEATING SYSTEM TO BE EMBEDDED IN GROUT LAYER UNDER STEAM ROOM FLOOR SYSTEM. MESH SYSTEM TO BE APPROXIMATELY 8 FT. x 8 FT. SQUARE, 120V, 809 WATTS (FIELD COORDINATE FINAL REQUIREMENTS WITH ARCHITECT / G.C.). PROVIDE WITH FLOOR HEATING SENSOR, INSTALL PER MANUFACTURER'S RECOMMENDATIONS. PROVIDE JUNCTION BOX AT STEAM STORAGE 111 FOR FINAL CONNECTION. PROVIDE THERMOSTAT FOR FLOOR HEATING MAT SYSTEM EQUAL TO WENT NEUHAT SIGNATURE WITH WIFI CONNECTION CAPABILITY, TOUCHSCREEN, AND INDEPENDENT SEVEN DAY PROGRAMMABILITY.
5. FIELD ROUTE NEW CONDENSATE DRAIN PIPING TO NEAREST DRAIN SUMP, RE-PLUMBING. SUPPORT PIPING PER SPECIFICATIONS.



PERMIT SET



1 LOWER LEVEL FLOOR PLAN - HVAC
3/32" = 1'-0"



2 ENLARGED MECHANICAL ROOM #156- HVAC PIPING
3/16" = 1'-0"

ADDITION AND RENOVATION TO PLEASANT VALLEY COUNTRY CLUB
CLUBHOUSE
 1 PLEASANT VALLEY DRIVE
 LITTLE ROCK, ARKANSAS 72212

PROJECT NO. 21075
DATE: June 21, 2023

LOWER LEVEL FLOOR PLAN - HVAC PIPING

M1.04-A