

PETTIT & PETTIT
CONSULTING ENGINEERS, INC.
FRANKS ENGINEER
PERMIT SET

HVAC GENERAL NOTES

- ALL LIGHTER SOLID LINES REPRESENT PIPING, DUCTWORK, EQUIPMENT, ETC. TO REMAIN.
- ALL DARKER SOLID LINES REPRESENT NEW PIPING, DUCTWORK, EQUIPMENT, ETC.
- FIELD VERIFY EXACT SIZE AND LOCATION OF ALL EXISTING ITEMS SHOWN ON THIS PLAN THAT ARE TO BE CONNECTED TO.

HVAC COORDINATION NOTES

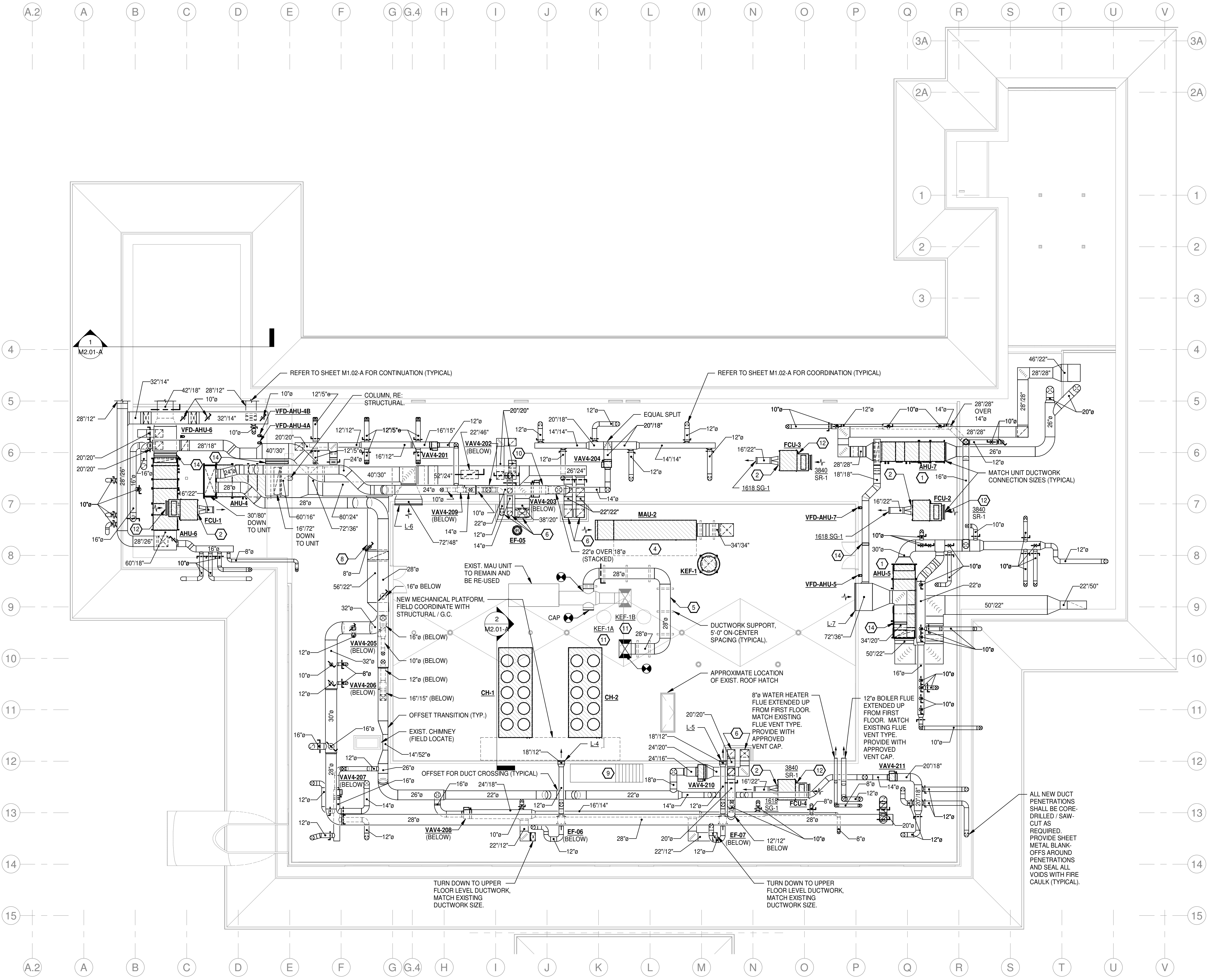
- DUE TO LOW FLOOR-TO-FLOOR ELEVATIONS AND TIGHT CLEARANCES FOR THIS PROJECT, CONTRACTOR SHALL FULLY REVIEW THE DRAWINGS AND SHALL FIELD COORDINATE CLOSELY WITH G.C. AND ALL OTHER TRADES TO ENSURE HVAC EQUIPMENT, DUCTWORK, PIPING, ETC. IS INSTALLED IN A TIMELY MANNER AND WITH A COORDINATED TEAM EFFORT TO HELP AVOID POTENTIAL CONFLICTS WITH OTHER TRADES.
- DUCTWORK AND PIPING SHALL BE ROUTED HIGH THROUGH THE ACCESSIBLE MANSARD ROOF AREAS. COORDINATE WITH ALL TRADES TO ENSURE PROPER WALKING SPACE FOR ACCESS IS MAINTAINED.

MEDIUM PRESSURE DUCTWORK NOTE

ALL SUPPLY DUCTWORK BETWEEN AIR HANDLING UNITS AND VAV TERMINAL BOXES SHALL BE ROUNDED SPIRAL OVAL SMACNA PRESSURE CLASS, SEAL CLASS A, AND RATED FOR 4" W.G. STATIC PRESSURE.

HVAC KEYED NOTES

- AIR HANDLING UNIT ON CONCRETE EQUIPMENT PAD BY OTHERS (FIELD COORDINATE). REFER TO PIPING PLAN.
- PANTS-LEG TRANSITION, MATCH UNIT CONNECTION SIZES.
- PROVIDE RELOCATE MAKE-UP AIR UNIT WITH NEW FULL PERIMETER ROOF CURB.
- COORDINATE MAKE-UP AIR UNIT SERVICE CLEARANCE REQUIREMENTS.
- INSULATE AND JACKET EXTERIOR DUCTWORK PER SPECIFICATIONS (TYPICAL).
- NEW DUCTWORK ROUTED INSIDE OF COVERED DOGHOUSE, RE: ARCHITECT FOR DOGHOUSE CONSTRUCTION.
- FLASH / COUNTER-FLASH DUCTWORK AT WALL PENETRATION PER ARCHITECT'S DIRECTIONS.
- OFFSET RETURN AIR BELOW OUTSIDE AIR DUCTWORK, FIELD COORDINATE TO MAINTAIN MAXIMUM SERVICE AVAILABILITY.
- ACCESS PLATFORM AND STEPS FOR CHILLER PLATFORM ACCESS, RE: ARCHITECT FOR CONSTRUCTION.
- 24"16" SUPPLY DUCTWORK BELOW.
- EXISTING KITCHEN EXHAUST FAN TO REMAIN AND BE RE-USED.
- FAN COIL UNIT SUPPORTED FROM ABOVE, HANG HIGH IN ROOM. SEE DETAIL 7, SHEET M3.02A.
- VARIABLE FREQUENCY DRIVE (VFD) SUSPENDED ON UNI-STRUT FRAME.
- AIR FLOW MEASURING STATION EQUAL TO EBTRON GOLD IN STRAIGHT SECTION OF DUCTWORK.



1 ROOF PLAN - HVAC
3/32" = 1'-0"

ADDITION AND RENOVATION TO PLEASANT VALLEY COUNTRY CLUB
CLUBHOUSE
1 PLEASANT VALLEY DRIVE
LITTLE ROCK, ARKANSAS 72212

REVISIONS

PROJECT NO.
21075
DATE:
June 21, 2023

ROOF PLAN - HVAC
M1.03-A