

PETTIT & PETTIT
CONSULTING ENGINEERS, INC.
PERMIT SET

HVAC GENERAL NOTES

- ALL LIGHTER SOLID LINES REPRESENT PIPING, DUCTWORK, EQUIPMENT, ETC. TO REMAIN.
- ALL DARKER SOLID LINES REPRESENT NEW PIPING, DUCTWORK, EQUIPMENT, ETC.
- FIELD VERIFY EXACT SIZE AND LOCATION OF ALL EXISTING ITEMS SHOWN ON THIS PLAN THAT ARE TO BE CONNECTED TO.

HVAC COORDINATION NOTES

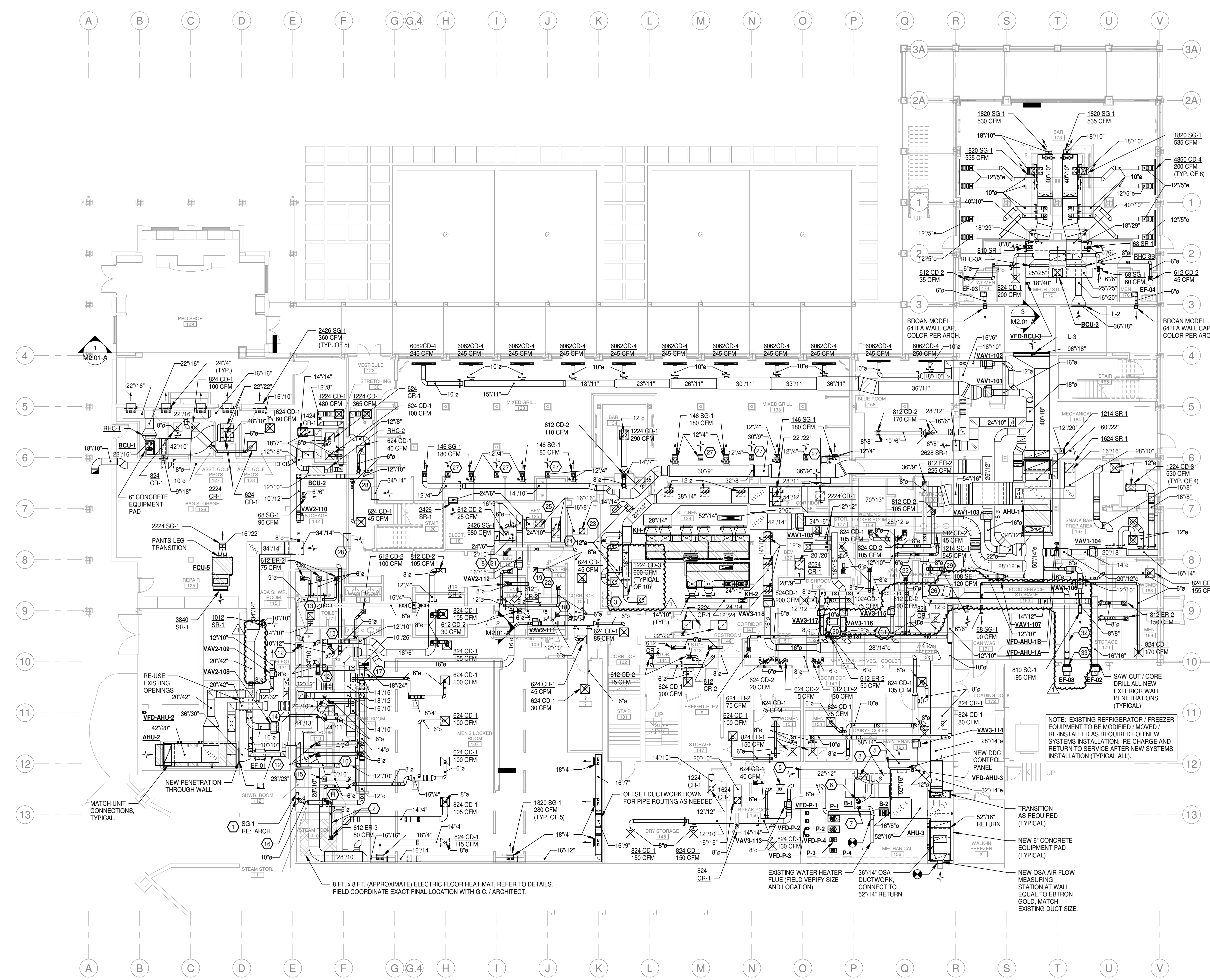
- DUE TO LOW FLOOR-TO-FLOOR ELEVATIONS AND TIGHT CLEARANCES FOR THIS PROJECT, CONTRACTOR SHALL FULLY REVIEW THE DRAWINGS AND SHALL FIELD COORDINATE CLOSELY WITH G.C. AND ALL OTHER TRADES TO ENSURE HVAC EQUIPMENT, DUCTWORK, PIPING, ETC. IS INSTALLED IN A TIMELY MANNER AND WITH A COORDINATED TEAM EFFORT TO HELP AVOID POTENTIAL CONFLICTS WITH OTHER TRADES.

MEDIUM PRESSURE DUCTWORK NOTE

ALL SUPPLY DUCTWORK BETWEEN AIR HANDLING UNITS AND VAV TERMINAL BOXES SHALL BE ROUND SPIRAL OVAL SMACNA PRESSURE CLASS, SEAL CLASS A, AND RATED FOR 4" W.G. STATIC PRESSURE.

HVAC KEYED NOTES

- FURNISH AND INSTALL STEAM GENERATOR EQUIPMENT SG-1 EQUAL TO AMEREC MODEL MK-14, 15.6 KW, 280V 3 PHASE, 50A MOCP. PROVIDE WITH THREE ELEMENT TANK ASSEMBLY, THREE INTERNAL PROBES, INTERNAL CONTROL CIRCUIT ASSEMBLY, ELECTRICAL TERMINAL BLOCKS, AND FACTORY GENERATOR CIRCUIT BREAKER. FURNISH AND INSTALL ACCESSORIES TO INCLUDE THE FACTORY RECOMMENDED GLACIER PACKAGE, INCLUDING EXTERNAL WATERPROOF SURFACE MOUNT K2 TOUCHSCREEN CONTROLS, COMFORTFLO STEAM HEAD, 3/4" AUTO DRAIN VALVE, AND DRIP PAN. PROVIDE FACTORY RECOMMENDED 3/4" 10 PSI PRESSURE RELIEF VALVE, AND ADDITIONAL SECOND COMFORTFLO STEAM HEAD AS RECOMMENDED BY EQUIPMENT MANUFACTURER FOR STEAM GENERATOR SIZE. PROVIDE STEAM ROOM THERMISTORY ROOM HUMIDITY SENSOR AS RECOMMENDED BY MANUFACTURER FOR ROOM TEMPERATURE SENSING. FIELD COORDINATE EXACT LOCATIONS WITH ARCHITECT AND STEAM ROOM MANUFACTURER. FIELD COORDINATE FINAL STEAM HEAD INSTALLATION LOCATIONS WITH ARCHITECT AND STEAM ROOM MANUFACTURER. FOLLOW ALL MANUFACTURER'S INSTALLATION RECOMMENDATIONS FOR EQUIPMENT AND ACCESSORIES. FINAL COLOR COORDINATION TO BE PER ARCHITECT. PROVIDE FACTORY COLOR CHIP CHART FOR ARCHITECT'S SELECTION. PROVIDE ADDITIONAL 3/8" WATER INLET AND 3/4" RELIEF / DRAIN SHUT-OFF VALVES PER MANUFACTURER'S RECOMMENDATIONS. TERMINATE DRAIN AND PRESSURE RELIEF PIPING PER AHJ AND LOCAL CODE. INSULATE ALL STEAM PIPING FROM GENERATOR TO STEAM HEADS.
- PROVIDE STAINLESS STEEL AIR DEVICE AND DUCTWORK TO BRANCH CONNECTION AS RECOMMENDED BY STEAM ROOM MANUFACTURER. SLOPE DUCTWORK TO AIR DEVICE.
- NEW REMOTE UTILITY CABINET / FIRE SUPPRESSION CABINET FOR NEW KITCHEN HOOD. FIELD LOCATE.
- NOT USED.
- SEAL PENETRATIONS THROUGH WALL AT INDICATED MECHANICAL ROOM WALLS TIGHT TO DUCTWORK, PIPING, CONDUIT, ETC.
- NEW 12" AL29-4C DOUBLE WALL BOILER FLUE VENT TO NEW ROOF.
- NEW 8" WATER HEATER FLUE VENT TO NEW ROOF (MATCH EXISTING MATERIALS).
- RELOCATED BOILERS, REFER TO DETAILS.
- NOT USED.
- 1024 CR-1, 280 CFM.
- 612 CD-2, 100 CFM.
- 812 ER-2, 125 CFM.
- 1424 ER-1, 600 CFM.
- 612 CD-2, 45 CFM.
- 1024 ER-1, 140 CFM.
- 1820 SE-1, 1055 CFM.
- 612 CD-2, 25 CFM.
- 612 CD-2, 45 CFM.
- 612 CD-2, 30 CFM.
- 612 ER-2, 50 CFM.
- 612 ER-2, 75 CFM.
- 1416 CR-3.
- 1824 CR-1.
- 1824 CD-1, 555 CFM.
- 812 CD-2, 125 CFM.
- 146 SR-1.
- 34"114" PASS-THROUGH DUCTWORK.
- 612 ER-2, 100 CFM.
- 16"14" STAINLESS STEEL DUCTWORK DROP TO DISHWASH MACHINE EXHAUST VENT CONNECTION. WELD ALL JOINTS, TYPICAL. SET EXHAUST AIR FLOW RATE TO 300 CFM.
- 28"6" STAINLESS STEEL EXHAUST DUCTWORK. WELD ALL JOINTS.
- 12"12" STAINLESS STEEL EXHAUST DUCTWORK. WELD ALL JOINTS.
- TRANSITION TO MATCH FAN CONNECTION AS REQUIRED.



1 LOWER LEVEL FLOOR PLAN - HVAC
3/32" = 1'-0"

ADDITION AND RENOVATION TO PLEASANT VALLEY COUNTRY CLUB
CLUBHOUSE
1 PLEASANT VALLEY DRIVE
LITTLE ROCK, ARKANSAS 72212

REVISIONS		
1	ASI 05	08-25-23

PROJECT NO.
21075
DATE:
June 21, 2023

LOWER LEVEL
FLOOR PLAN -
HVAC

M1.01-A
SCM ARCHITECTS PLLC