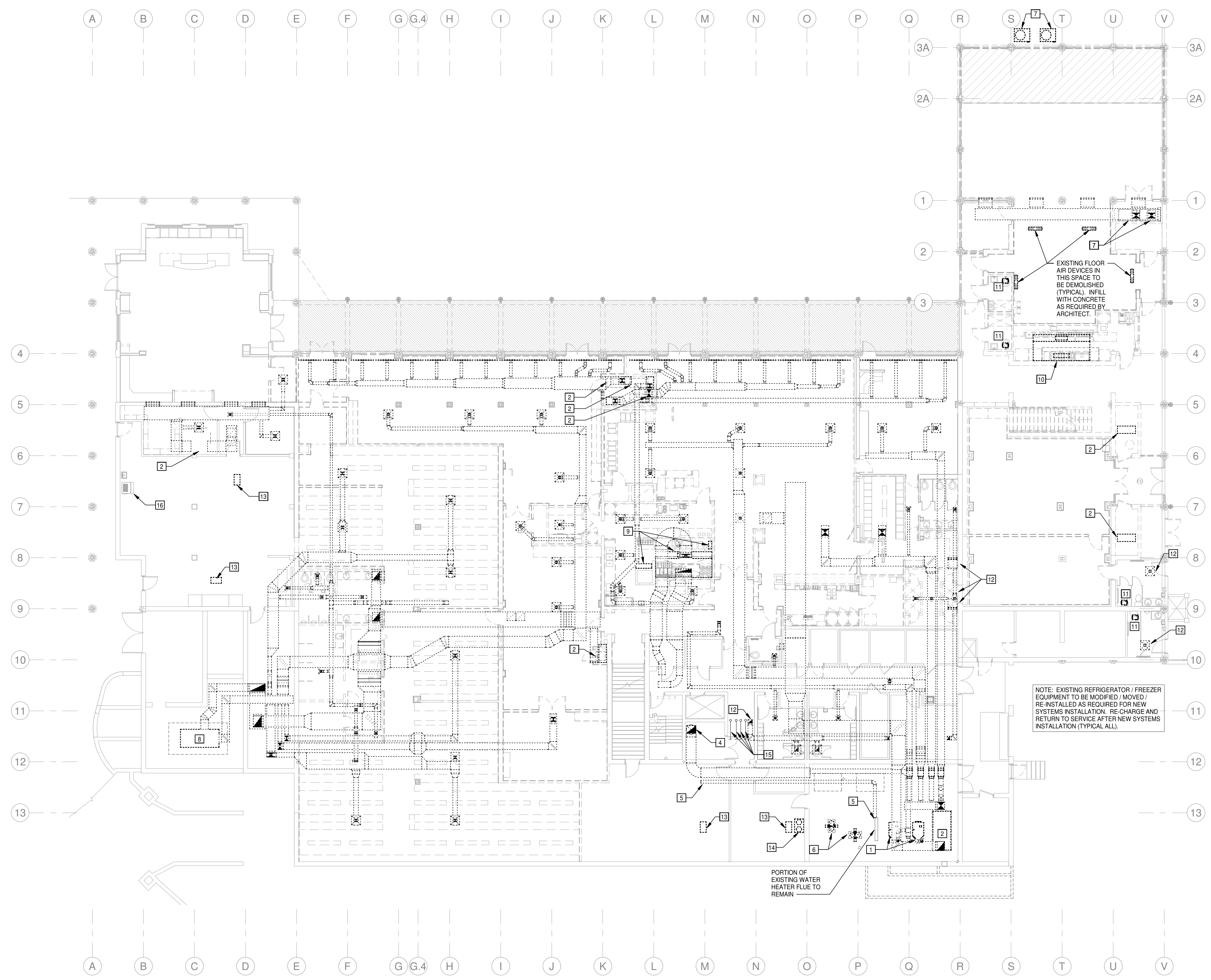


**HVAC GENERAL DEMOLITION NOTES**

1. ALL LIGHTER SOLID LINES REPRESENT PIPING, DUCTWORK, EQUIPMENT, ETC. TO REMAIN.
2. ALL DARKER DASHED LINES REPRESENT PIPING, DUCTWORK, EQUIPMENT, ETC. TO BE REMOVED.
3. FIELD VERIFY EXACT SIZE AND LOCATION OF ALL EXISTING ITEMS SHOWN ON THIS PLAN THAT ARE TO BE CONNECTED TO.
4. SEE ARCHITECTURAL PLANS FOR REMOVAL AND REPLACEMENT OF CEILINGS.

**HVAC DEMOLITION KEYED NOTES**

1. EXISTING BOILERS TO BE RELOCATED AND RE-USED.
2. EXISTING AIR HANDLING UNIT AND ALL ASSOCIATED DUCTWORK, PIPING, CONTROLS, ETC. TO BE REMOVED.
3. EXISTING THERMOSTAT TO BE REMOVED (TYPICAL ALL).
4. EXISTING BOILER FLUE TO BE REMOVED.
5. EXISTING DOMESTIC WATER HEATER FLUE TO BE REMOVED TO POINT INDICATED.
6. EXISTING PUMPS TO BE REMOVED.
7. EXISTING SPLIT SYSTEMS AND ALL ASSOCIATED DUCTWORK, PIPING, CONTROLS, ETC. TO BE REMOVED.
8. EXISTING EXTERIOR AIR HANDLING UNIT AND ALL ASSOCIATED DUCTWORK, PIPING, CONTROLS, ETC. TO BE REMOVED. TEMPORARILY CAP EXTERIOR PENETRATIONS DURING CONSTRUCTION.
9. EXISTING KITCHEN HOOD AND ASSOCIATED REMOTE CONTROLS CABINET AND REMOTE FIRE SUPPRESSION CABINET TO BE DEMOLISHED.
10. EXISTING KITCHEN HOOD AND ALL ASSOCIATED DUCTWORK, PIPING, CONTROLS, ETC. TO BE REMOVED.
11. EXISTING EXHAUST FANS AND ASSOCIATED DUCTWORK TO BE DEMOLISHED COMPLETELY.
12. EXISTING DUCTWORK AND AIR DEVICES TO BE DEMOLISHED COMPLETELY.
13. EXISTING FAN COIL UNIT, PIPING, AIR DEVICES, CONTROLS, ETC. TO BE DEMOLISHED COMPLETELY.
14. EXISTING GLYCOL FEED SYSTEM TO BE DEMOLISHED COMPLETELY.
15. EXISTING HVAC PIPING ON THIS LEVEL TO BE DEMOLISHED COMPLETELY.
16. DISCONNECT EXISTING DOMESTIC COLD WATER PIPING FROM EXISTING ICE MAKER UNIT. COORDINATE WITH PLUMBING. FLUSH UNIT THOROUGHLY FOR FINAL CONNECTION TO NEW CHILLED WATER PIPING LOOP.



**1 LOWER LEVEL DEMOLITION PLAN -HVAC**  
3/32" = 1'-0"



PERMIT SET

ADDITION AND RENOVATION TO PLEASANT VALLEY COUNTRY CLUB

**CLUBHOUSE**  
1 PLEASANT VALLEY DRIVE  
LITTLE ROCK, ARKANSAS 72212

REVISIONS

PROJECT NO. 21075  
DATE: June 21, 2023

LOWER LEVEL DEMOLITION PLAN - HVAC

**M0.01-A**