



HOSPITALS • RESEARCH • FOUNDATION

# CVICU ROOM EXHAUST

CONSTRUCTION DOCUMENTS

PROJECT NUMBER : 2022-191

ISSUE DATE : 12-01-2022

INDEX OF DRAWINGS				
REVISION	REV DATE	SHEET NUMBER	SHEET TITLE	SHEET ISSUE DATE
GENERAL				
		G-001	COVER SHEET	12-01-2022
MECHANICAL				
		M-001	MECHANICAL LEGEND AND SYMBOLS	12-01-2022
		MD104	FOURTH FLOOR MECHANICAL DEMOLITION PLAN	12-01-2022
		MH104	FOURTH FLOOR MECHANICAL PLAN	12-01-2022
		MH105	ROOF MECHANICAL PLAN	12-01-2022
		M-301	MECHANICAL SECTIONS	12-01-2022
		M-501	MECHANICAL DETAILS AND SCHEDULES	12-01-2022
		M-701	MECHANICAL CONTROLS	12-01-2022
		M-901	MECHANICAL ISOMETRIC	12-01-2022

Project \_\_\_\_\_



HOSPITALS • RESEARCH • FOUNDATION

CVICU ROOM  
EXHAUST

MAIN HOSPITAL -  
SOUTH WING

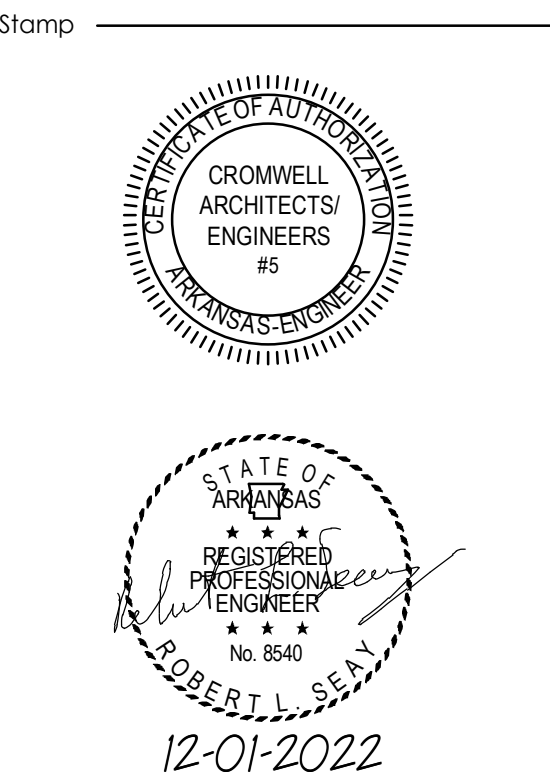
ONE CHILDREN'S WAY  
LITTLE ROCK,  
ARKANSAS

Design Phase \_\_\_\_\_

**CONSTRUCTION DOCUMENTS**

Revisions

No.	Date	Description



Notes

- CROMWELL ARCHITECTS ENGINEERS, INC. ALL RIGHTS RESERVED
- THIS SHEET DESIGNED FOR COLOR PRINTING. CRITICAL INFORMATION MAY BE LOST WITH BLACK AND WHITE PRINTING.

Project Number \_\_\_\_\_

Issue Date **2022-191**

Sheet Title **12-01-2022**

As-Builts  
3/6/2024  
As-Builts  
No Change

COVER SHEET

Sheet Number \_\_\_\_\_

# G-001















Revisions

No.	Date	Description

Stamp

Notes

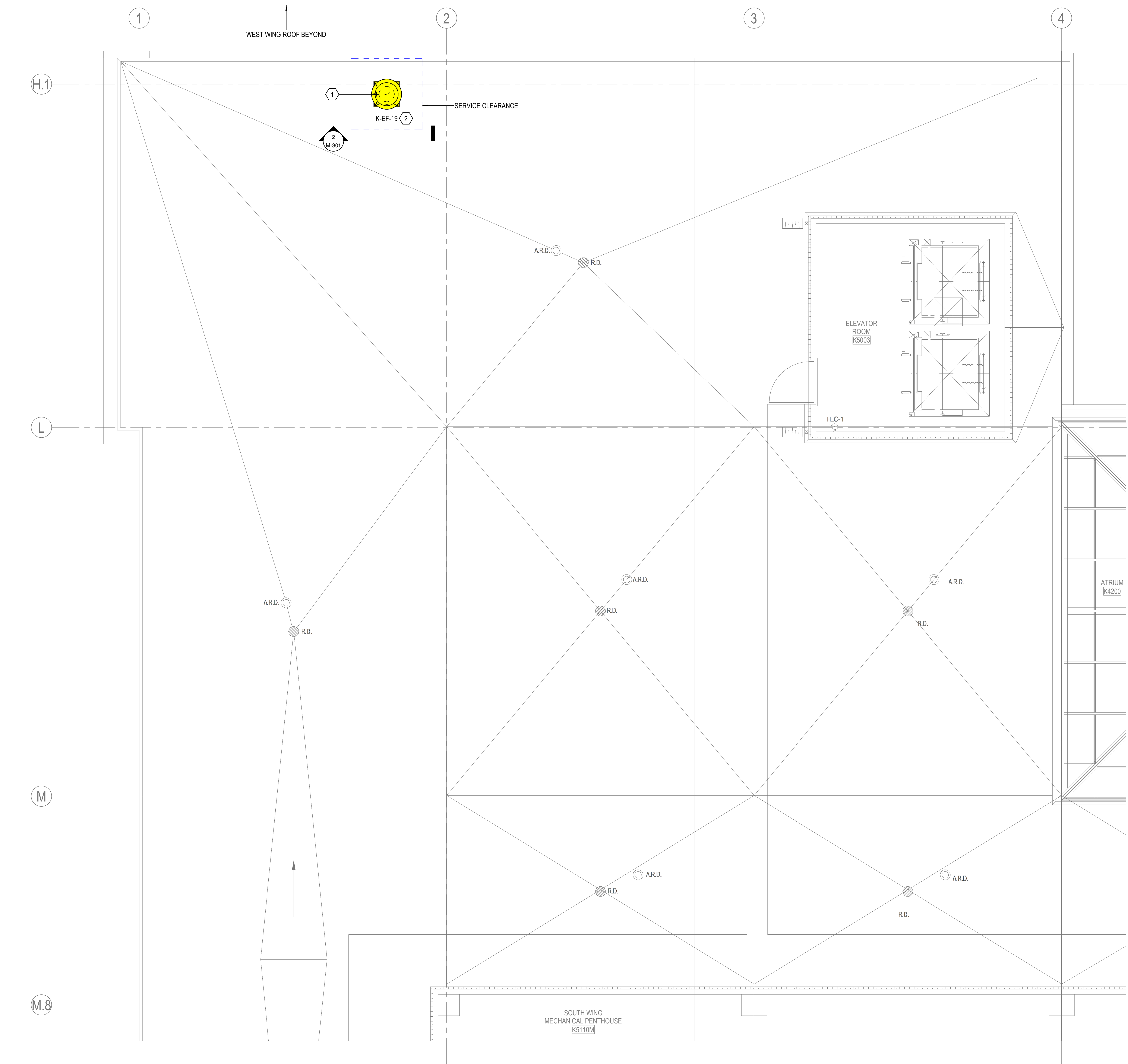
- CROMWELL ARCHITECTS ENGINEERS, INC. ALL RIGHTS RESERVED
- THIS SHEET DESIGNED FOR COLOR PRINTING. CRITICAL INFORMATION MAY BE LOST WITH BLACK AND WHITE PRINTING.

Project Number **2022-191**  
 Issue Date **12-01-2022**  
 Sheet Title

**ROOF MECHANICAL PLAN**

Sheet Number

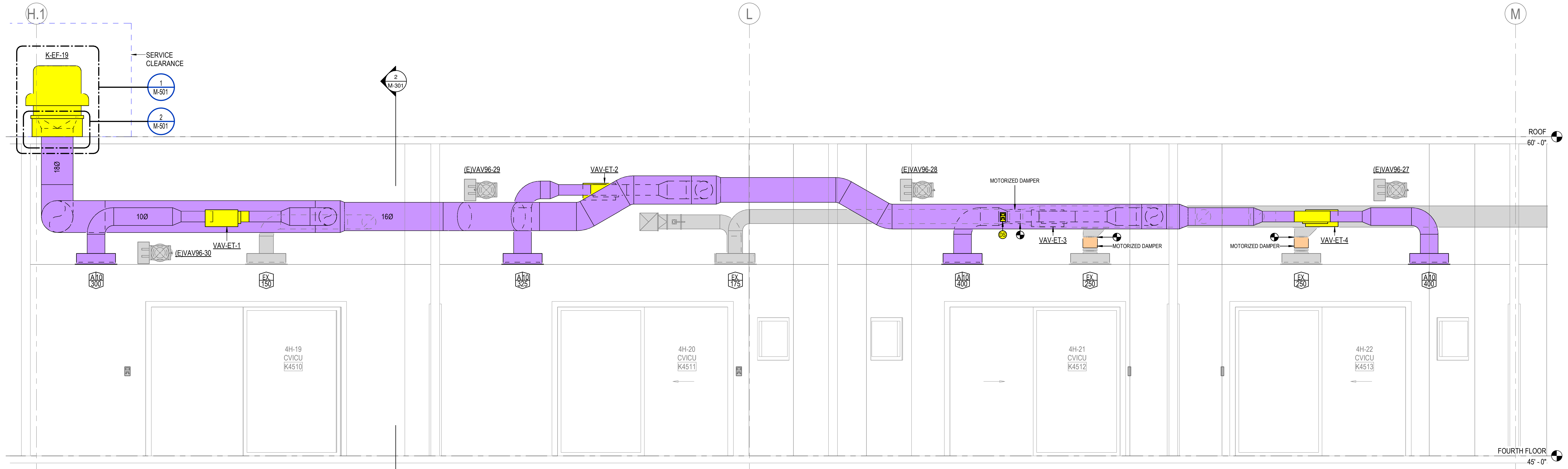
**MH105**



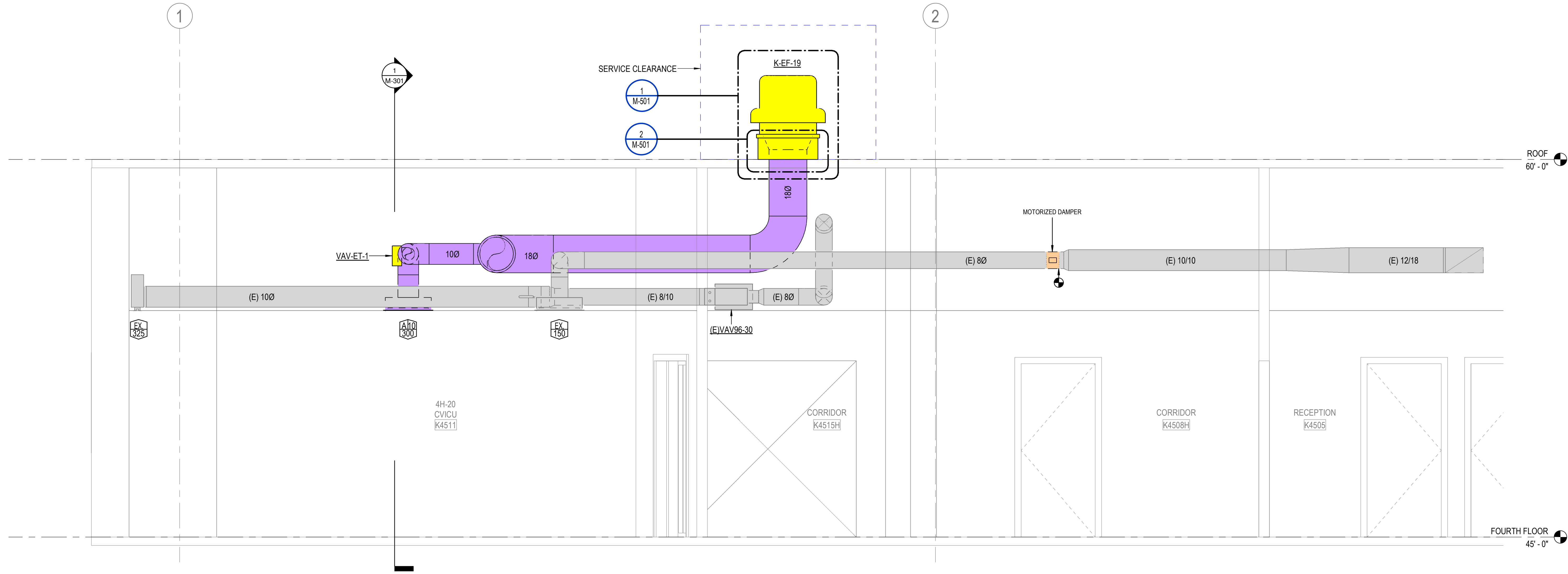
- INSTALLATION KEYED NOTES:**
- EXHAUST AIR DUCT DOWN THROUGH ROOF. REFER TO FOURTH FLOOR MECHANICAL PLAN FOR CONTINUATION. PROVIDE DUCTWORK FLEXIBLE CONNECTION TO EXHAUST FAN. REFER TO MECHANICAL DETAILS.
  - EXHAUST FAN AND ROOF CURB PROVIDED BY EXHAUST FAN MANUFACTURER. REFER TO MECHANICAL DETAILS FOR ADDITIONAL INFORMATION REGARDING ROOF CURB AND DUCT PENETRATION THRU ROOF.

**1 ROOF MECHANICAL PLAN**  
 1/4" = 1'-0"  
 0 8 16 32

As-Builts  
 3/6/2024  
 As-Builts  
 No Change



1 MECHANICAL SECTION - LOOKING EAST  
 1/2" = 1'-0"



2 MECHANICAL SECTION - LOOKING NORTH  
 1/2" = 1'-0"

Project



CVICU ROOM EXHAUST

MAIN HOSPITAL - SOUTH WING

ONE CHILDREN'S WAY  
 LITTLE ROCK, ARKANSAS

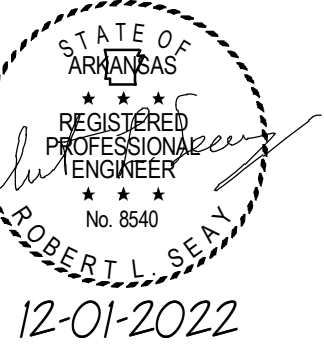
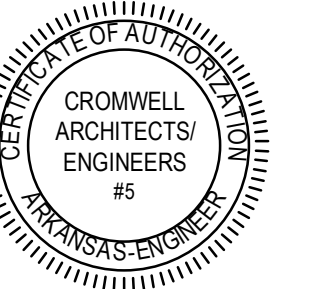
Design Phase

**CONSTRUCTION DOCUMENTS**

Revisions

No.	Date	Description

Stamp



Notes

1. CROMWELL ARCHITECTS ENGINEERS, INC. ALL RIGHTS RESERVED
2. THIS SHEET DESIGNED FOR COLOR PRINTING. CRITICAL INFORMATION MAY BE LOST WITH BLACK AND WHITE PRINTING.

Project Number

2022-191

Issue Date

12-01-2022

Sheet Title

MECHANICAL SECTIONS

Sheet Number

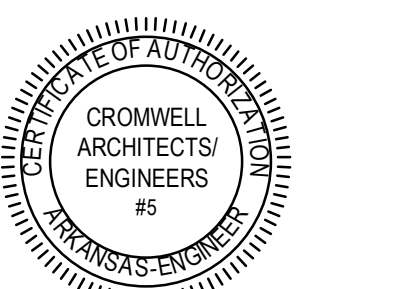
**M-301**

As-Builts  
 3/6/2024  
 As-Builts  
 No Change



Revisions	No.	Date	Description

Stamp



Notes

- CROMWELL ARCHITECTS ENGINEERS, INC. ALL RIGHTS RESERVED
- THIS SHEET DESIGNED FOR COLOR PRINTING. CRITICAL INFORMATION MAY BE LOST WITH BLACK AND WHITE PRINTING.

Project Number **2022-191**

Issue Date **12-01-2022**

Sheet Title

**MECHANICAL DETAILS AND SCHEDULES**

Sheet Number

**M-501**

EXHAUST FAN														
MARK	LOCATION	SERVES	TYPE	DRIVE	FAN		MOTOR				MAX SONES	WEIGHT (LBS)	REFERENCE PRODUCT	NOTES
					CFM	ESP	HP	RPM	VOLTS/Ø	FLA				
K-EF-19	SOUTH WING ROOF	CVICU NEGATIVE ROOMS	DOWNBLAST	BELT	1,425	2.0	2.0	1725	208/3	7.5	19	113	GREENHECK GB-180HP	1

NOTES: 1. BELT DRIVE CENTRIFUGAL ROOF EXHAUST FAN. SPUN ALUMINUM HOUSING, BACKWARD INCLINED ALUMINUM FAN WHEEL. PROVIDE MOTOR VIBRATION ISOLATION MOUNTS, GRAVITY BACKDRAFT DAMPER, 12 INCH INSULATED ROOF CURB, ELECTRICAL DISCONNECT SWITCH

VARIABLE FREQUENCY DRIVE							
MARK	LOCATION	SERVES	TYPE	HP	VOLTS/Ø	REFERENCE PRODUCT	NOTES
VFD-K-EF-19	MECH PENTHOUSE K5110M	CVICU NEGATIVE ROOM EF	PWM	2.0	208/3	SQUARE D "S-FLEX"	1

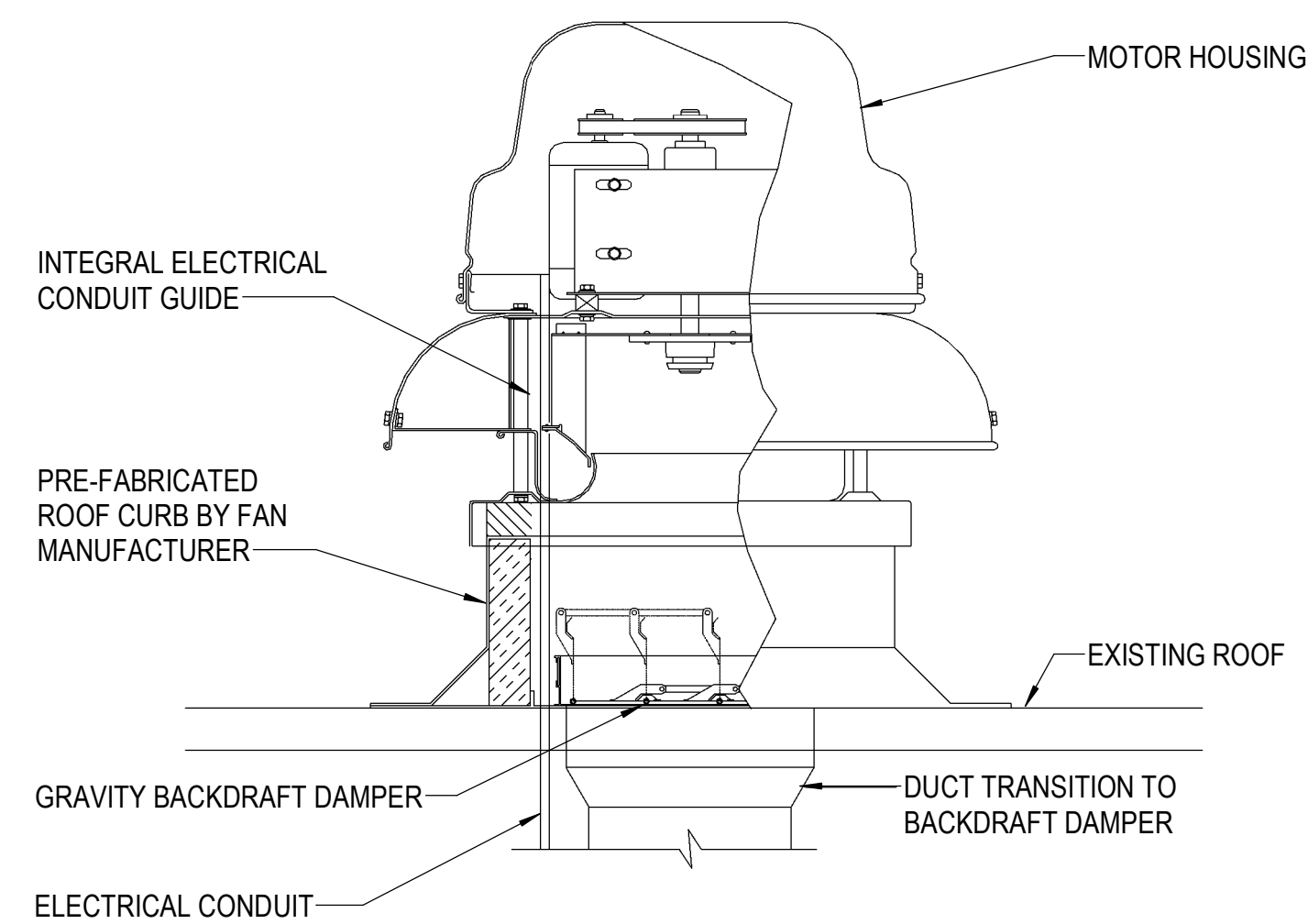
NOTES: 1. FURNISHED AND INSTALLED BY CONTROLS CONTRACTOR. PROVIDE FULL CONTACT BY-PASS AND BACNET NETWORK INTERFACE.

VAV TERMINAL											
MARK	LOCATION	SERVES	TYPE	INLET SIZE (IN)	MAX. AIRFLOW (CFM)	MIN. AIRFLOW (CFM)	MAX. INLET SP (IN WC)	MAX. APD (FT WC)	MAX N.C. (DB)	REFERENCE PRODUCT	NOTES
VAV-ET-1	CVICU ROOM K4510	NEGATIVE ROOM EXHAUST	SHUT-OFF	6	300	0	1.0	0.55	30	TUTTLE & BAILEY RRV	1
VAV-ET-2	CVICU ROOM K4511	NEGATIVE ROOM EXHAUST	SHUT-OFF	6	325	0	1.0	0.55	30	TUTTLE & BAILEY RRV	1
VAV-ET-3	CVICU ROOM K4512	NEGATIVE ROOM EXHAUST	SHUT-OFF	6	400	0	1.0	0.55	30	TUTTLE & BAILEY RRV	1
VAV-ET-4	CVICU ROOM K4513	NEGATIVE ROOM EXHAUST	SHUT-OFF	6	400	0	1.0	0.55	30	TUTTLE & BAILEY RRV	1

NOTES: 1. SINGLE DUCT ROUND EXHAUST TERMINAL UNIT WITH INTEGRAL DAMPER AND AIRFLOW MEASUREMENT. GALVANIZED STEEL CONSTRUCTION, SLIP INLET/OUTLET CONNECTIONS, NO LINER, NO REHEAT. PROVIDE WITH CONTROLS MOUNTING BRACKET WITHOUT CONTROLS ENCLOSURE. REFER TO PLANS FOR CONTROL BRACKET AND DAMPER SHAFT HANDING. CONTROLS SHALL BE FURNISHED AND INSTALLED BY CONTROLS CONTRACTOR.

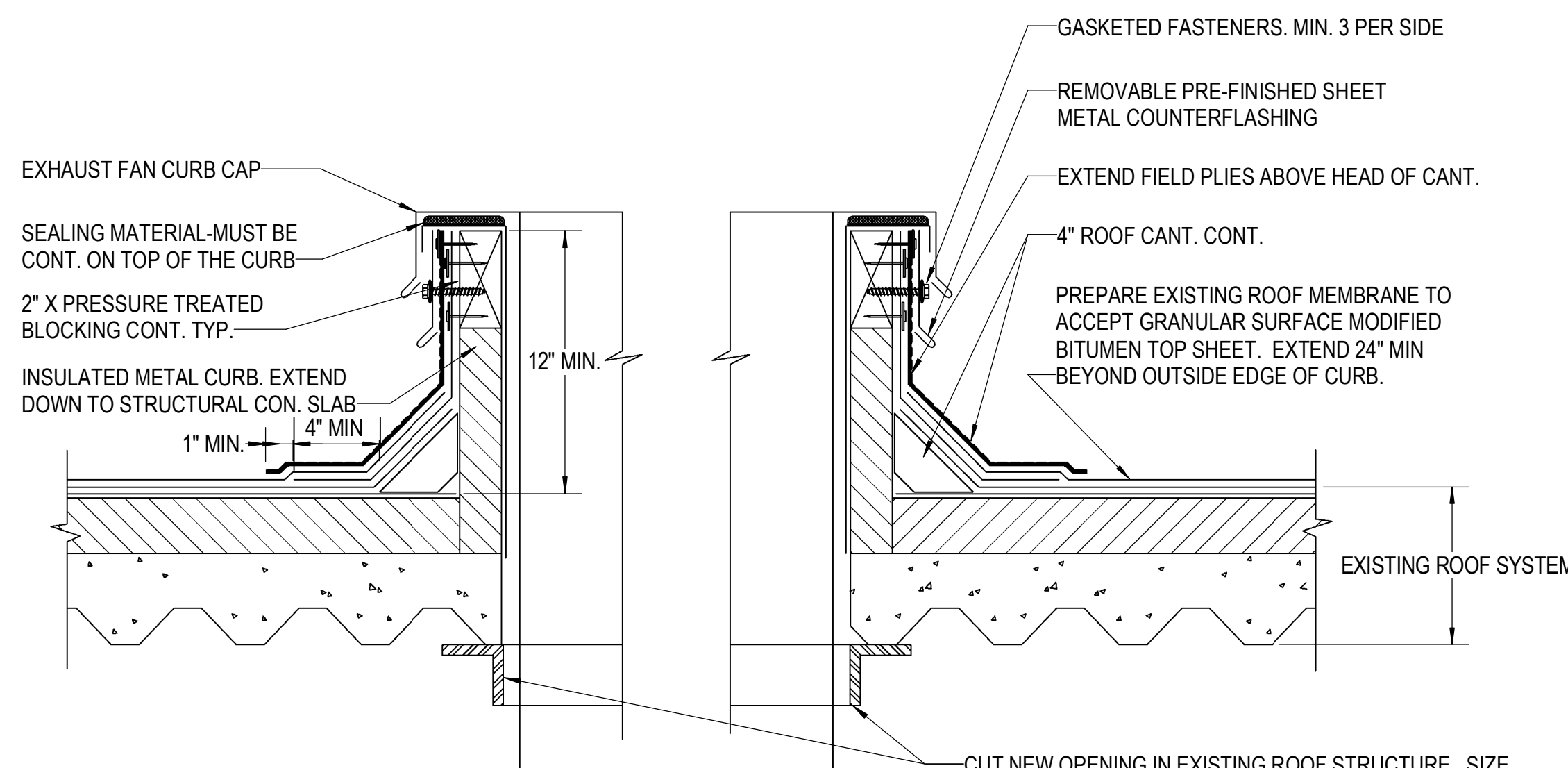
AIR DEVICES					
MARK	TYPE	DESCRIPTION	SIZE	REFERENCE PRODUCT	NOTES
A	EXHAUST	EGGCRATE	24"x24"	TUTTLE & BAILEY CRE500	1

NOTES: 1. EGGCRATE GRID CORE WITH 1/2"x1/2"x1/2" SPACING, ALUMINUM CONSTRUCTION, STANDARD WHITE FINISH. PROVIDE SQUARE TO ROUND TRANSITION. PROVIDE MANUFACTURER'S MOUNTING FRAME FOR HARD CEILING LOCATIONS.



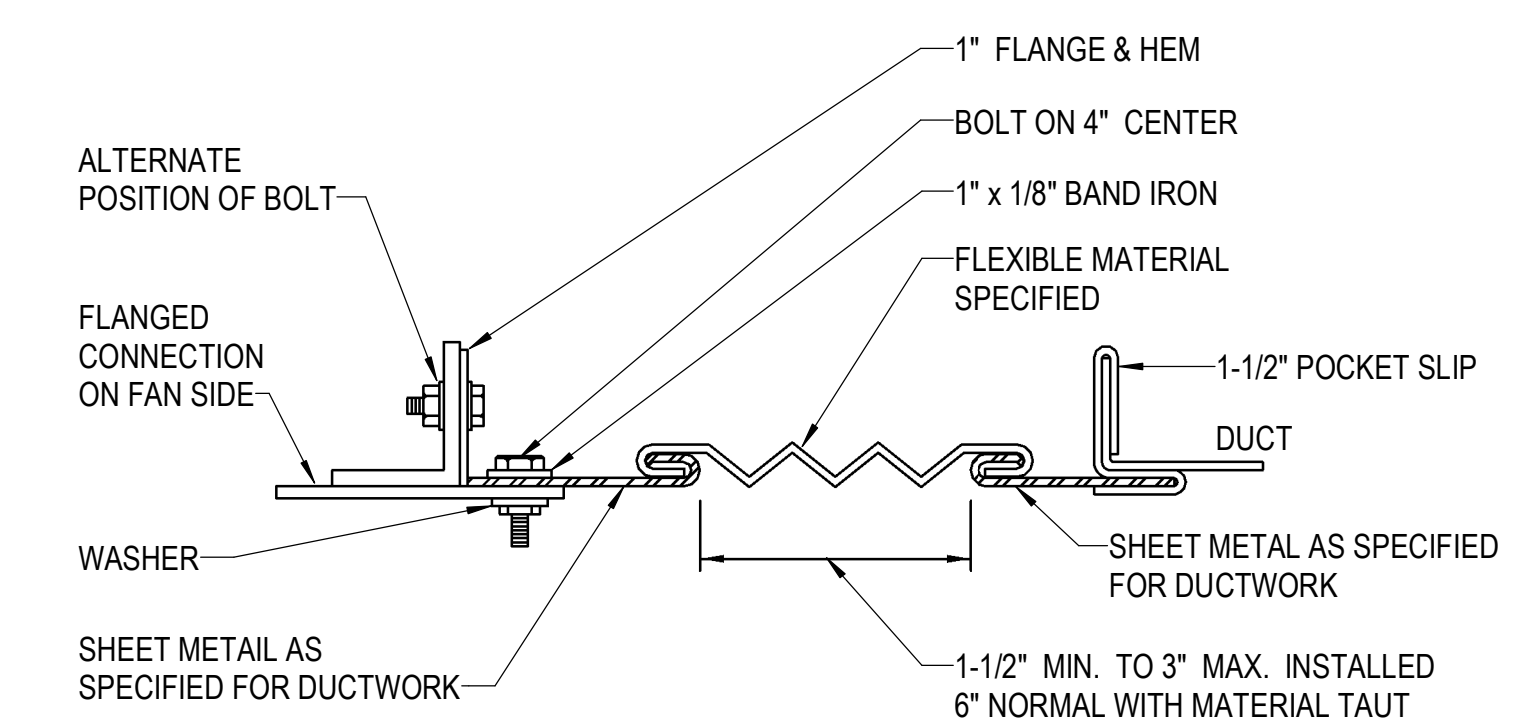
NOTE:  
 ROOF CURB, DISCONNECT SWITCH, BACKDRAFT DAMPER, INSULATION & SEAL STRIP SHALL BE PROVIDED BY FAN MANUFACTURER (COORDINATE CURB WITH ROOF TYPE AND SLOPE).

1 EXHAUST FAN DETAIL  
 NOT TO SCALE



ROOFING NOTE:  
 ROOF PATCH FOR EXISTING ROOF: EXTEND PATCH 24" BEYOND NEW ROOF CURB FOOTPRINT. ROOF TYPE, COLOR, AND FINISH SHALL MATCH EXISTING NUMBER OF LAYERS PER ROOF MANUFACTURER. ATTACHMENT PER ROOF MANUFACTURER RECOMMENDATION. NEW ROOF MATERIALS, METHODS, AND INSTALLER SHALL BE APPROVED BY EXISTING ROOF MEMBRANE MANUFACTURER. NEW ROOF INSTALLER SHALL INSURE THAT ROOF WARRANTY IS NOT VOIDED BY SAID WORK.

2 ROOF CURB AND DUCT PENETRATION THRU ROOF DETAIL  
 NOT TO SCALE



3 DUCTWORK FLEXIBLE CONNECTION DETAIL  
 NOT TO SCALE

As-Builts  
 3/6/2024  
 As-Builts  
 No Change



Project



CVICU ROOM EXHAUST

MAIN HOSPITAL - SOUTH WING

ONE CHILDREN'S WAY  
 LITTLE ROCK,  
 ARKANSAS

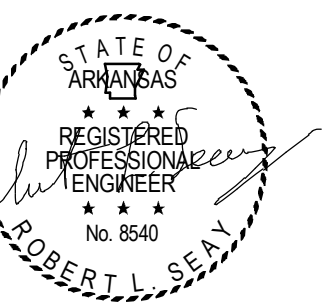
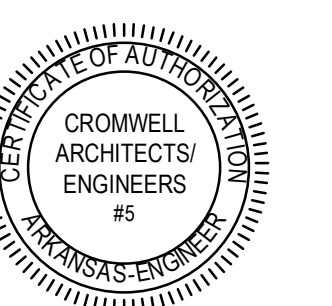
Design Phase

**CONSTRUCTION DOCUMENTS**

Revisions

No.	Date	Description

Stamp



Notes

- CROMWELL ARCHITECTS ENGINEERS, INC. ALL RIGHTS RESERVED
- THIS SHEET DESIGNED FOR COLOR PRINTING. CRITICAL INFORMATION MAY BE LOST WITH BLACK AND WHITE PRINTING.

Project Number

2022-191

Issue Date

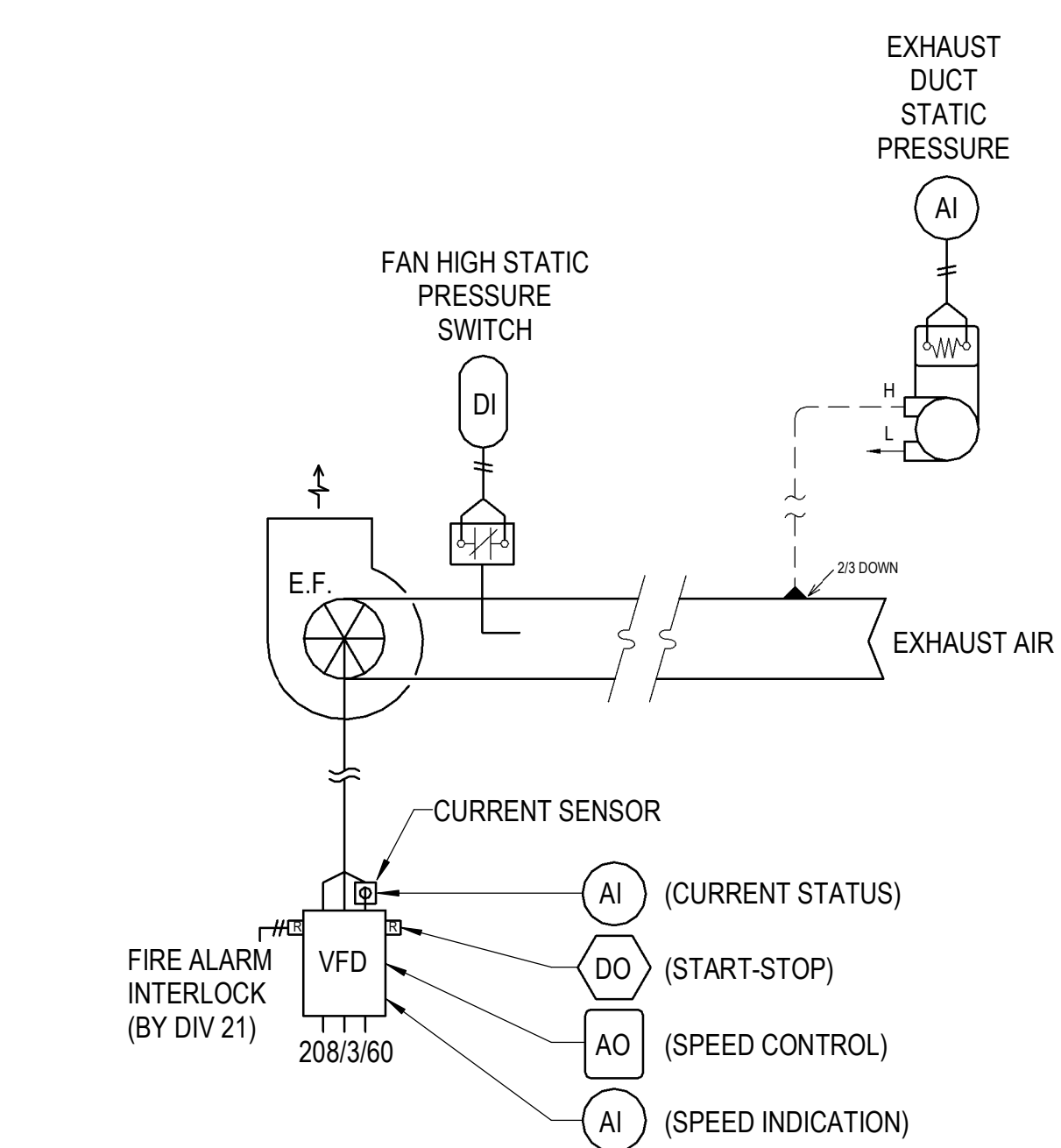
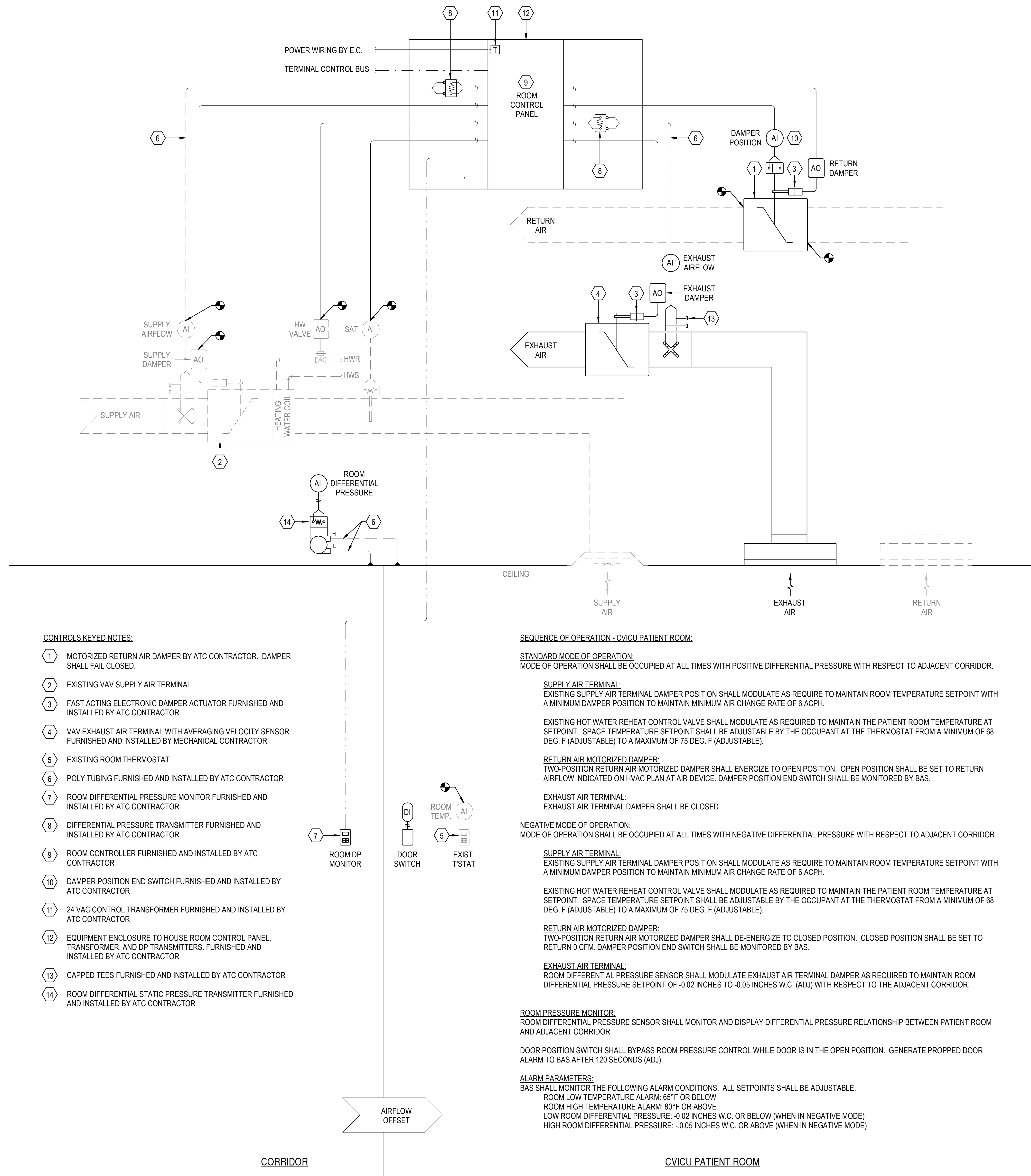
12-01-2022

Sheet Title

**MECHANICAL CONTROLS**

Sheet Number

**M-701**



**1 CVICU NEGATIVE ROOM CONTROL DIAGRAM**  
 NOT TO SCALE

**2 EXHAUST FAN CONTROL DIAGRAM**  
 NOT TO SCALE

As-Builts  
 3/6/2024  
 As-Builts  
 No Change



