

P-1

Attention Installer:

- Elkay recommends that drop-in sinks be installed by a professional, experienced installer.
- Elkay is not responsible for the sink or countertop if damaged during installation.
- Metal edges may be sharp. Use caution when handling.
- Follow all local plumbing and building codes.
- Inspect sink for damage prior to beginning installation.

Required Tools (not included)



Cut Resistant

Installation

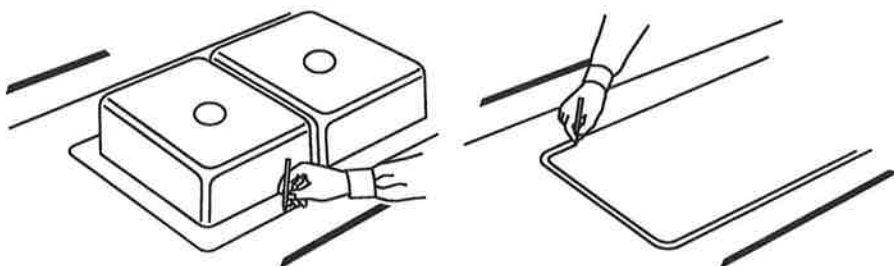


WARNING: Always wear safety goggles and gloves when using power tools or handling the sink to prevent personal injury.

- 1 Position the sink upside down on the countertop.

Trace a line around the edge of the sink.

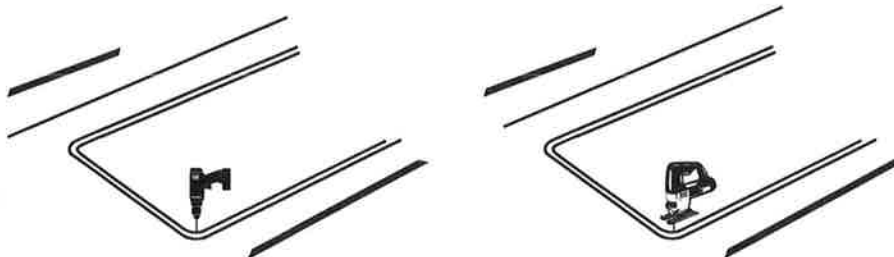
Draw a line 5/16" inside of the outline of the sink.



- 2 Drill a pilot hole in all four corners of the inside line.

Use a saber or jig saw to cut on the inside line.

Place a support underneath the cutout portion of the countertop to prevent it from falling during cutting.



- 3 Apply silicone caulk (not included) around the cutout in the countertop surface.

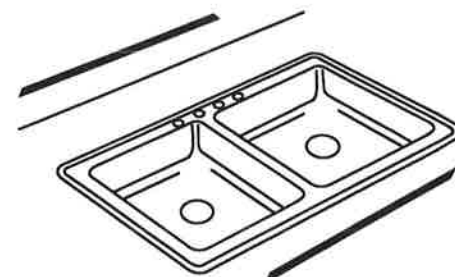
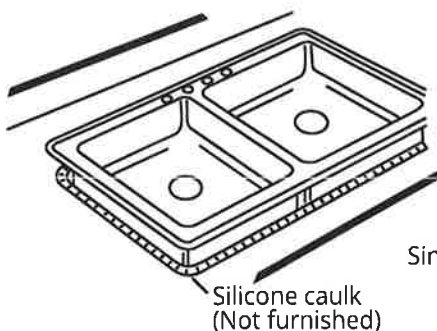
Carefully lower the sink into the cutout.

Assemble the clips and screws.

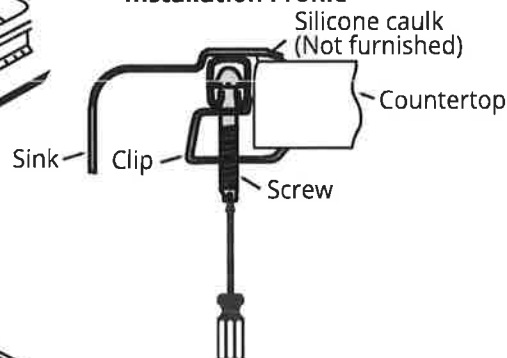
From the underside, place a clip in the center along each side and hand tighten to hold sink in place. Fasten the remaining clips along the edges and space them approximately 3" from each end, and equally along the front, back, and sides. For countertops thicker than 3/4", clips can be spaced as close as 1-1/2".

From the top, check the seal between the sink edge and countertop. Lightly tighten clips evenly with a screwdriver until the sink is tight to the countertop. Do not over tighten.

Wipe away any excess caulk with a rag.



Installation Profile





Elkay Stainless Steel Sink Care and Cleaning

With proper care and maintenance, your Elkay stainless steel sink will give you a lifetime of service. Below are the suggestions for the care and cleaning of your Elkay sink.

General Cleaning

It is recommended to clean Elkay sinks daily to avoid build-up of soap or mineral deposits, as these tend to have an adverse effect on the appearance of the product. For daily cleaning use an ordinary mild detergent and soft cloth to rinse and dry the sink. Allowing water or cleaners to evaporate on metal will negatively impact the look of the sink. To avoid this, it is important to dry the sink after each use.

- To avoid unwanted build-up, it is recommended to dry your sink after each use.
- Soft abrasive cleaners may be used when necessary (Blue Scotch-Brite Pads). Strong abrasive cleaners will scratch and dull the surface (Green Scotch-Brite Pads).

Do's

- It is recommended the use of an Elkay bottom grid or rinsing basket to protect your sink.
- Run cold water when pouring boiling water into sink.
- It is recommended that you clean your sink prior to first use.

Do Not's

- Avoid storing open containers of household cleaners and chemicals containing chloride such as bleach, acid, and drain cleaners or toilet bowl cleaner beneath the sink. Vapor emission from the chlorides can cause corrosion and pitting to the exposed stainless steel and other metals including faucet water supply lines.
- Do not use dish mats as these can trap soap and dirt making sink maintenance more time-consuming and cultivate harmful bacteria.
- Do not leave standing water in your sink, especially if the water contains anything that could stain the sink (i.e. coffee or tea).

Stainless Steel

Light scratches are normal for stainless steel sinks; over time they will blend into the uniform finish pattern.

- Steel soap pads, steel wool, or wire brushes should never be used; particles can adhere to a stainless steel sink surface and will eventually rust. If an abrasive pad must be used Elkay recommends Scotch-Brite Non-Scratch (blue Scotch-Brite pad).
- Do not use cleaners containing ammonia, bleach, or other harsh chemicals. Chemicals containing chlorides (bleach) are particularly damaging to stainless. If used, rinse the surface immediately to prevent corrosion.

Recommended Cleaning Products:

- Bar Keeper's Friend Soft Cleanser
- Stainless steel cleaner & polish
- Or any mild detergent



Elkay Stainless Steel Sink Care and Cleaning

Success with cleaners are dependent on the quality of the water being used. Failure to follow care and cleaning will void your warranty. For additional information, please visit elkay.com.

Home Remedies

- For major stains or grime on your sink, a mixture of a half a cup of white vinegar and a half cup of water will help. Dip a cloth into the solution and rub away the grime or stain. The solution should then be rinsed off and dried to prevent damage to your sink's finish.
- Another solution for major grime or stains, is a small amount of baking soda and water on a toothbrush. This should remove any nasty stains. Again the solution should then be rinsed off and dried to prevent damage to the finish of your sink.

DO NOT allow any part of your Elkay sink to soak in either of the above mixtures. It is also recommended to test the above mixtures on an unseen part of your faucet to see what affect it has to the finish of your sink.



Elkay Residential Stainless Sinks Limited Warranty

Elkay warrants to the original purchaser of an Elkay stainless steel sink that Elkay will, at its option, replace or repair, without charge, such product if it fails due to a manufacturing defect during normal residential use during the first year from the date of purchase. Product replacement does not include transportation cost or labor installation cost. This warranty covers only stainless steel self-rimming drop-in sinks installed in a conventional countertop surface and stainless steel undermount sinks installed in a conventional solid surface countertop and applies to residential installations only. Elkay reserves the right to examine product in question and its installation prior to replacement.

Waste fittings and accessories are warranted for 1 year from the date of purchase.

Other Warranty Conditions on Sinks

Our warranty does not cover product failure or damage caused by the use of optional accessories, abusive treatment, misuse, environmental factors, normal wear including dents and scratches, improper care and cleaning, use of aggressive and abrasive cleaners, damage due to handling or failure to follow the recommended procedures for installation, care and maintenance as detailed in the installation and care guide provided with every sink. This warranty is extended only to the original consumer purchaser of the product.

This warranty does not cover shipping costs, labor costs, or any other charges for such items as installation or replacement of the sink, diagnosis or replacement of any faucet or component part, or any other expense or loss. This warranty does not cover obsolete, discontinued nor display products, whether such items are purchased at discount outlets and/or online or sold on clearance or close out.

All incidental or consequential damages are specifically excluded. No additional warranties, express or implied are given, including but not limited to, any implied warranty of merchantability or fitness for a particular purpose.

Some states do not allow the exclusion or limitation of incidental or consequential damages or limitations on how long an implied warranty lasts, so the above limitations or exclusions may not apply to you.

This warranty gives you specific legal rights, and you may also have other rights which vary from state to state.

The above protection will continue for 1 year.

To Obtain Service Under Warranty

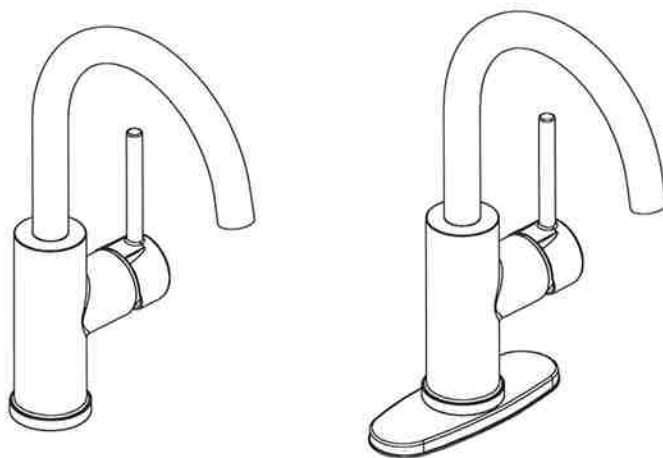
1. Write to: Elkay Manufacturing Company
Attention: Consumer Care
1333 Butterfield Road, Suite 200
Downers Grove, Illinois 60515
2. Include a letter containing the following information:
 - a. Date of purchase and installation.
 - b. Proof of Purchase (copy of original dated invoice)
 - c. Description of nature of defect.
 - d. Model number or description of model and/or component part if possible.

ELKAY®

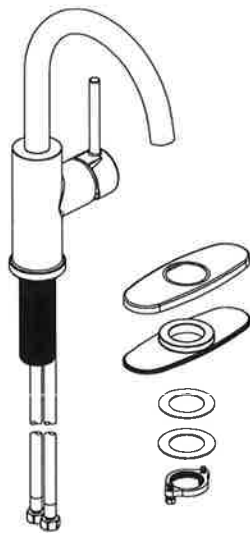
INSTALLATION / OWNER'S MANUAL

Single Handle Bar Faucet

Model # LKAV3021



INCLUDES:



RECOMMENDED TOOLS:



Groove joint pliers



Wrench



Screwdriver



Sealant Tape



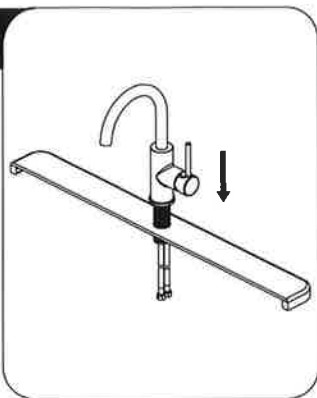
Plumber's Putty

SAVE FOR CONSUMER

WARNING: Please carefully read and properly follow the instructions for installation found in this manual.

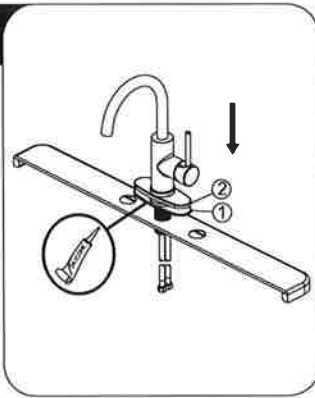
STEPS:

1



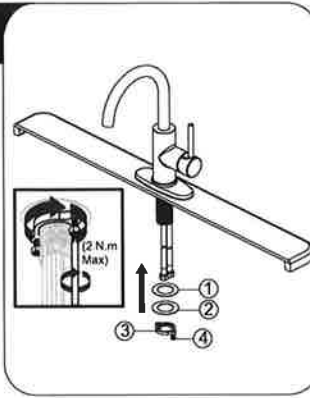
Optional No Deck Plate Installation:
Before installation, Shut off the water supply. Remove the old faucet. Clean the mounting surface. Place the faucet through the mounting holes in the sink until the faucet sets on top of the sink.

2



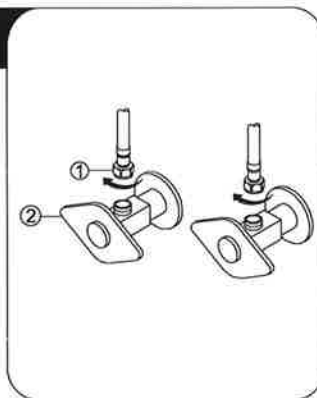
Optional Deck Plate Installation:
Before installation, align the hole in the gasket (1) and deck plate (2) with the mounting hole in the sink. Place the faucet assembly through the deck plate (2) and mounting hole in the sink until the faucet assembly sets on top of deck plate (2).
NOTE: A silicone is required under the gasket (1).

3



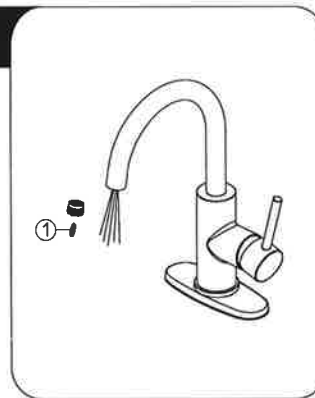
Secure the faucet assembly with the washers (1&2) and nut (3). Hand tighten the nut (3) onto the faucet assembly. Lock the nut (3) into position by tightening the screws (4) with a phillips screwdriver. Do not overtighten.

4



Make connections to water lines:
Thread the nut (1) on the supply line onto the outlet of the water supply valve (2) and tighten with a wrench. Do not overtighten.
NOTE: The hot side inlet tube is indicated by a label. Avoid twisting wires together or placing the wires close to each other and damaging.

5



Important: After installation is complete, remove the aerator from the faucet with a coin (1) to flush the water lines. Turn on hot and cold water supplies. Turn handle to full open position for one minute. Check for leaks. Turn off the water and reinstall the aerator.

CARTRIDGE REPLACEMENT

1



Shut off water supply. With valves in "closed" position, remove handle (1) from faucet. Loosen the set screw (2) and unscrew the cap (3) from the cartridge nut (4).

2



Loosen cartridge nut (1) by turning it counter-clockwise and lift out the cartridge (2). Insert new cartridge. Reinstall the handle.

CARE AND CLEANING INSTRUCTIONS

Congratulations on your purchase of an Elkay product. Although your product is extremely durable, attention should be given to the care, cleaning and maintenance of this product. Cleaning agents and abrasives may cause damage, which may result in oxidation and discoloration.

By following these simple guidelines for proper care and cleaning, it will give you years of enjoyment:

TO CLEAN: Simply wipe gently with a damp cloth and blot dry with a soft towel. A common rule of thumb is: when you dry off, dry off your product.

- Avoid build-up of soap, toothpaste or mineral deposits, as these tend to have an adverse effect on the appearance of the product.
- NEVER use cleaning products of any kind on this product - especially those containing ammonia, bleach or alcohol - or those with any form of abrasive.

FOR CARE AND MAINTENANCE:

- The water in certain areas of the world can be very caustic - standing water around the product can cause damage. Be sure to remove standing water with a dry, soft cloth as soon as possible.
- For polished brass finishes, as often as once a week, you can apply a paste wax or special, non-abrasive, brass coating (DO NOT APPLY POLISH).
- Before applying a protective coating, gently brush the entire fixture using a soft tooth brush. This will remove any dirt or deposit build-up.
- These simple steps will add temporary protective coating to your faucet and extend the life of the finish.

Failure to follow care and cleaning will void your warranty. For additional information, please visit elkayusa.com

WARRANTY

ELKAY LIMITED LIFETIME WARRANTY

ELKAY LIMITED LIFETIME WARRANTY

Elkay warrants that all parts and finishes of the Elkay Residential brand faucets are free from defects in materials and workmanship for the life of the product, if purchased after 1996. This warranty covers the original consumer purchaser of the product only. If the product should leak or drip during normal use, Elkay will provide, free of charge, a replacement cartridge. For other defects in material or workmanship, Elkay will, at its option, supply replacement parts (or if no longer available a comparable product). Elkay reserves the right to examine product in question and its installation prior to replacement.

What is not covered:

1. Damage caused by accident, negligence, misuse, abuse, improper installation or operation or failure to follow care or installation instructions enclosed with your product.
2. Damage occurring during shipment of the product (claims must be presented to the carrier).
3. Normal wear and tear.
4. Labor charges, costs of removal and reinstallation, and any damages to other property.
5. All industrial, commercial and business use whose purchasers are hereby extended a limited lifetime on mechanical parts and 5 years on finish.

What you must do to obtain warranty service:

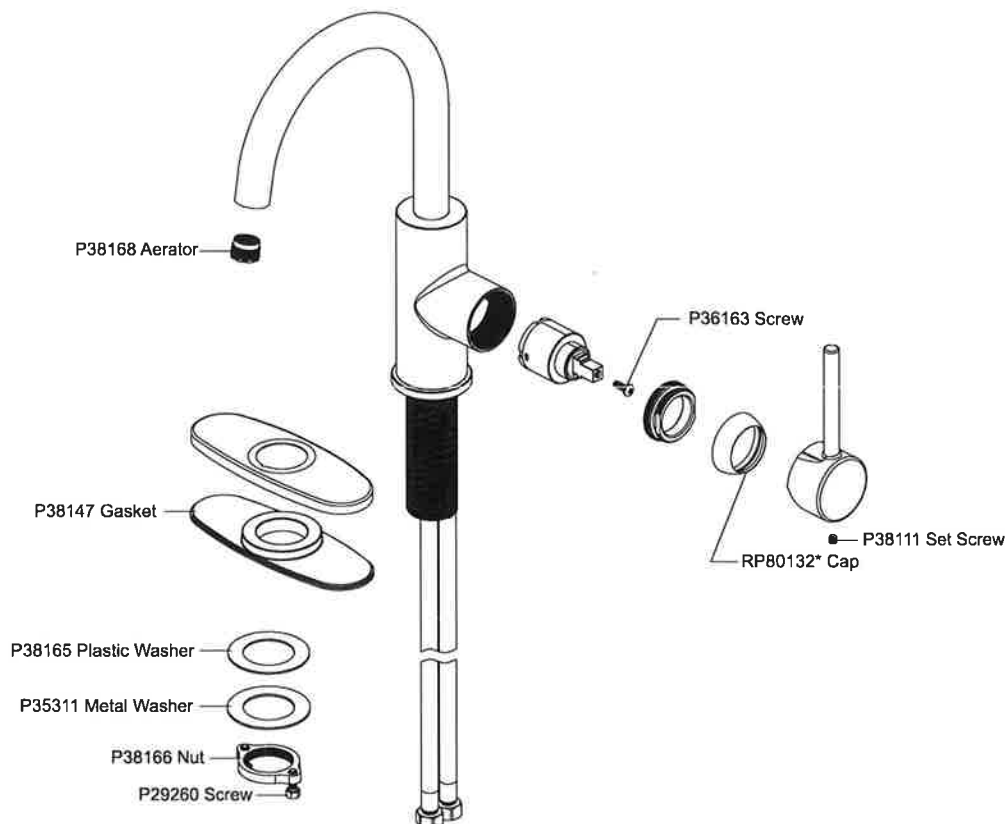
Either write to Elkay Manufacturing Company, attention Consumer Care, 1333 Butterfield Road, Suite 200 Downers Grove, Illinois 60515 or call 1-800-223-5529. Please provide date of purchase and installation, description of nature of the defect, and model number or description of model and/or component part.

THIS LIMITED WARRANTY IS EXPRESSLY IN LIEU OF ANY OTHER WARRANTIES, EXPRESSED IMPLIED, ARISING BY LAW OR OTHERWISE, INCLUDING WITHOUT LIMITATION, ANY IMPLIED WARRANTY OF MERCHANTABILITY OR FITNESS FOR A PARTICULAR PURPOSE. THIS LIMITED WARRANTY MAY NOT BE ALTERED, VARIED, OR EXTENDED, EXCEPT BY A WRITTEN INSTRUMENT EXECUTED BY ELKAY. THE REMEDY OF REPAIR OR REPLACEMENT AS PROVIDED UNDER THIS LIMITED WARRANTY IS EXCLUSIVE. IN NO EVENT SHALL THE MANUFACTURER BE LIABLE FOR ANY CONSEQUENTIAL OR INCIDENTAL DAMAGES TO ANY PERSON, WHETHER OR NOT OCCASIONED BY NEGLIGENCE OF ELKAY, INCLUDING WITHOUT LIMITATION DAMAGES FOR LOSS OF USE, COSTS PROPERTY DAMAGE OR OTHER MONETARY LOSS.

Some states do not allow the exclusion or limitation of incidental or consequential damages or limitations on how long an implied warranty lasts, so the above limitations or exclusions may not apply. This warranty gives you specific legal rights and you may also have other rights which vary from state to state.

This warranty covers product installed in the United States and Canada.

REPLACEMENT PARTS



ELKAY®

Elkay Faucet Care and Cleaning

With proper care and maintenance, your Elkay faucet will give you a lifetime of service. Below are the suggestions for the care and cleaning of your Elkay Faucet.

Faucet Cleaning

- Clean faucets daily to avoid build-up of soap or mineral deposits, as these tend to have an adverse effect on the appearance of the product.
- For typical cleaning, wipe faucet well with a damp cloth and dry thoroughly with a soft towel. Drying helps avoid water spots.
- DO NOT use cleaning products containing ammonia, bleach, alcohol or other harsh chemicals and DO NOT use any form of abrasives (e.g. abrasive sponges or steel wool) which are damaging to metal surfaces.
- Faucet spray faces may become dirty over time. With Elkay's easy-clean rubber spray face, cleaning is as easy as rubbing with a finger to clean. This is recommended to do on a daily basis.

Chrome

With chrome finished faucets common household cleaners (e.g. dish soap) can be used.* However, cleaners should be rinsed off thoroughly and the faucet should be dried.

Oil Rubbed Bronze

With oil rubbed bronze faucets Windex original can be used.* However, cleaners should be rinsed off thoroughly and the faucet should be dried.

*Though household cleaners CAN be used, simply using a damp towel and drying thoroughly is still recommended.

Care and Maintenance

- These simple steps will extend the life of your faucet.
- The water in certain areas of the world can be very caustic - standing water around the product can cause damage. Be sure to remove standing water with a dry, soft cloth as soon as possible.
- For chrome and brushed finishes, as often as once a week, you can apply a paste wax or special, non-abrasive, brass coating (for polished brass)
- Before applying a protective coating (paste wax), gently brush the entire fixture using a soft tooth brush. This will remove any dirt or deposit build-up.
- DO NOT APPLY POLISH

Replacing Parts

If your Elkay faucet is leaking it may be time to replace the faucet's cartridge. To learn more about this process, please reference this [article on replacing your cartridge](#). However, Elkay recommends that replacing a cartridge should be done by a professional.

Failure to follow care and cleaning will void your warranty. For additional information, please visit Elkay.com.

ELKAY®

Elkay Faucet Care and Cleaning

Home Remedies for Cleaning

- For major stains or grime on your faucets, a mixture of a half a cup of white vinegar and a half cup of water will help. Dip a cloth into the solution and rub away the grime or stain. The solution should then be rinsed off and dried to prevent damage to the finish of your faucet.
- The above mixture is also recommended for spray faces with built up debris. Use a toothbrush with this mixture to try to dislodge any debris obstructing the water flow.
- Another solution for major grime or stains, is a small amount of baking soda and water on a toothbrush. This should remove any nasty stains. Again, the solution should then be rinsed off and dried to prevent damage to the finish of your faucet.
- DO NOT allow any part of your Elkay faucet to soak in either of the above mixtures. It is also recommended to test the above mixtures on an unseen part of your faucet to see what affect it has to the finish of your faucet.



a Bead Industries, Inc. company

Warranty, Terms and Return Policies

TERMS: All sales are subject to credit approval. Terms are 2% ten days – net 30.

RETURNED GOODS: Requests for returning purchased items are subject to factory approval.

A Returned Goods Authorization (RGA) must be obtained from the factory prior to any return. Returned merchandise must be in their original cartons, listed in our current List Price Sheet and in clean saleable condition.

Restocking charge:

- Material that was shipped within 18 months of the return request is subject to a 25% restocking charge.
- Material that was shipped more than 18 months of the return request but less than 3 years is subject to a 50% restocking charge.
- Material returned more than 18 months after it was shipped is not subject to any stock rotation agreement.
- Material that was shipped more than 3 years before the return request is not returnable.
- Invoice dates as well as dates on packaging will control.

The restocking charge may be reduced if a new order of equal value is placed at the time the RGA is requested:

- 25% may be reduced to 15%
- 50% may be reduced to 35%

MINIMUM RETURN POLICY:

Return requests less than \$200 net will be charged \$50 processing fee in lieu of any restocking charge.

INVOICE:

We reserve the right to invoice all merchandise at prices in effect at time of shipment.

NO MINIMUM ORDER:

Orders less than \$200 list will be invoiced at list price less 35% (.65 multiplier).

McGuire Manufacturing Co., Inc.

60 grandview court • cheshire • ct • 06410

tel 203-699-1801 • fax 203-699-1813

mcguiremfg.com

customerservice@mcguiremfg.com

FREIGHT:

We will pay freight on shipments within the continental United States when the order (pre-tax) totals more than \$2200 net. We select the method of shipment and carrier when we pay the freight.

Limited Warranty Information

McGuire Manufacturing Co., Inc. (McGuire) warrants its product to be free from defects in material and workmanship for the period indicated below by product type measure from the date of purchase:

ITEM	WARRANTY PERIOD
Brass products	15 years
ProWrap	5 years
Eco P-Traps, Eco Strainers and Valve Strainers	1 year
Stainless Steel products	1 year
Lite Commercial P-Traps	1 year

McGuire's sole responsibility will be to replace, at no additional charge, any product which proves to be defective within the applicable warranty period. Shipping costs for product located outside the continental United States will be the sole responsibility of the customer. Duties and taxes, if levied, shall be the sole responsibility of the customer.

The above Limited Warranty shall not apply if the product has been damaged due to abuse, misuse, improper installation, accident, or other cause not within McGuire's control.

THE ABOVE LIMITED WARRANTY IS THE SOLE AND EXCLUSIVE WARRANTY. ALL OTHER WARRANTIES ARE DISCLAIMED, WHETHER EXPRESSED OR IMPLIED, INCLUDING BUT NOT LIMITED TO, ANY IMPLIED WARRANTIES OF MERCHANTABILITY OR FITNESS FOR A PARTICULAR PURPOSE. IN NO EVENT SHALL MCGUIRE BE RESPONSIBLE OR LIABLE FOR ANY SPECIAL INCIDENTAL, OR CONSEQUENTIAL DAMAGES OR LOSSES ARISING FROM THE USE OF THIS PRODUCT.

McGuire may, at its option, alter the contents of this LIMITED WARRANTY at anytime. These changes will affect products manufactured after the effective date of this policy.

McGuire Manufacturing Co., Inc.

60 grandview court • cheshire • ct • 06410

tel. 203-699-1801 • fax 203-699-1813

mcguiremfg.com

customerservice@mcguiremfg.com