

SMITH ASSOCIATES

ARCHITECTS, P.A.  
2701 Kavanaugh Blvd  
Suite 208  
Little Rock, AR  
72205  
(501) 614-8822  
Fax (501) 614-8826  
www.smithassociatespa.com

PETTIT & PETTIT  
CONSULTING  
ENGINEERS INC  
201 East Markham  
Suite 400  
Little Rock, AR  
72201  
(501) 374-3731  
Fax (501) 374-1802

DEVELOPMENT  
CONSULTANTS  
INC  
2200 Rodney Parham Rd  
Suite 220  
Little Rock, AR  
72212  
(501) 221-7880

HILL COTTAGE  
RENOVATION  
PHASE II  
  
ARKANSAS  
SCHOOL FOR THE BLIND  
/ VISUALLY IMPAIRED  
LITTLE ROCK, ARKANSAS

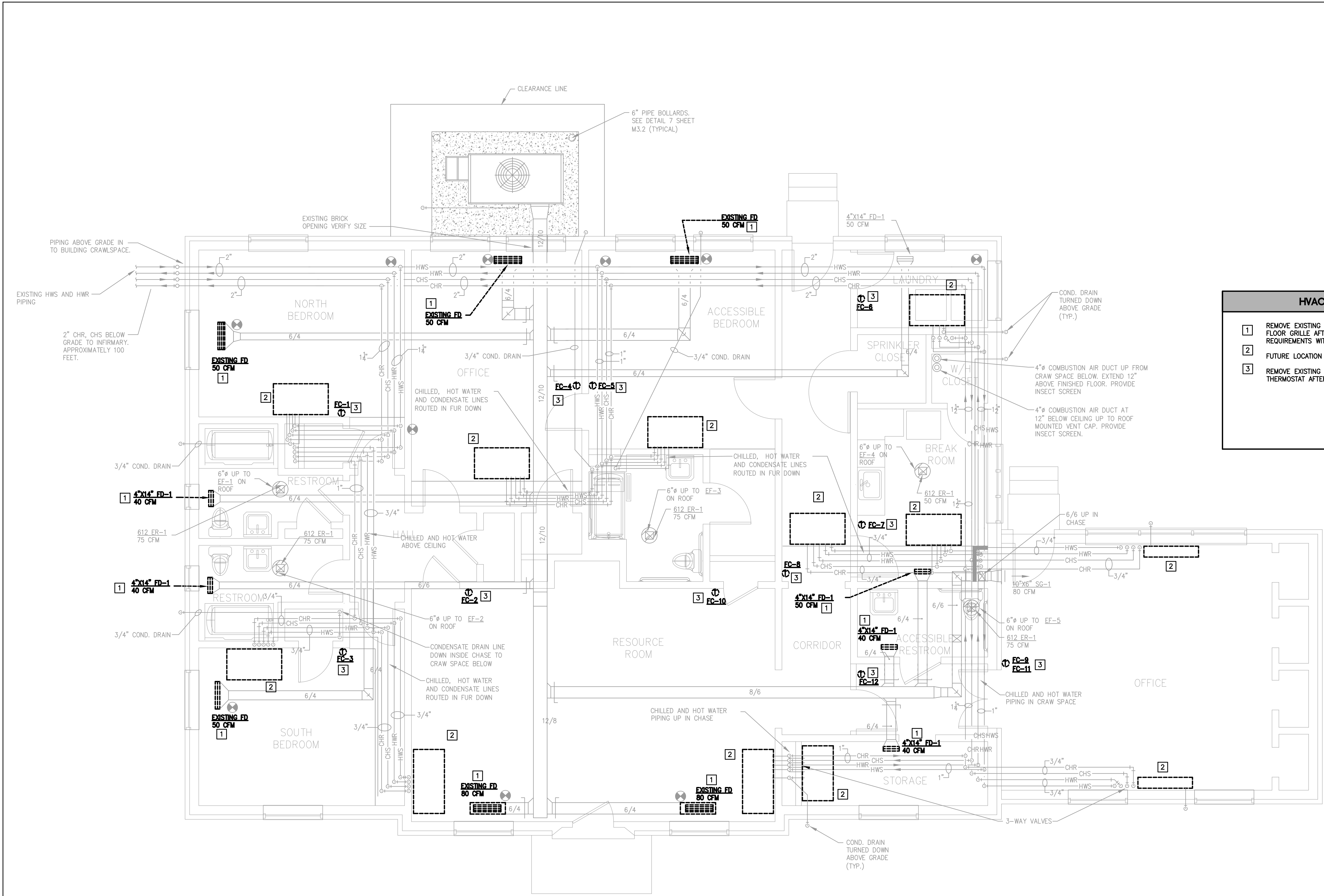
DEMO PLAN  
HVAC

PROJECT # 5102201

JANUARY 17, 2023

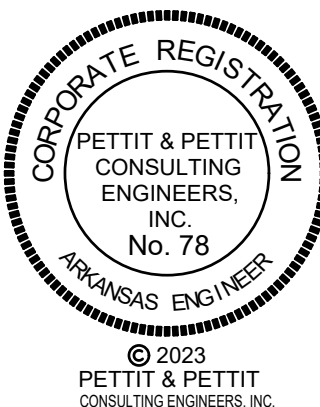
As-Builts  
2/26/2024  
CSUSA  
No Change

DM0.1



HVAC DEMOLITION KEYED NOTES	
1	REMOVE EXISTING FLOOR MOUNTED SUPPLY GRILLE. REINSTALL EXISTING FLOOR GRILLE AFTER ALL FLOORING HAS BEEN LAID. COORDINATE INSTALLATION REQUIREMENTS WITH FLOORING CONTRACTOR.
2	FUTURE LOCATION OF FAN COIL UNIT.
3	REMOVE EXISTING WALL MOUNTED THERMOSTAT. REINSTALL EXISTING THERMOSTAT AFTER ALL WALLS HAVE BEEN PAINTED AND REPAIRED.

1 HILL COTTAGE DEMO PLAN - HVAC  
SCALE: 1/4" = 1'-0"



SMITH ASSOCIATES

ARCHITECTS, P.A.  
2701 Kavanaugh Blvd  
Suite 208  
Little Rock, AR 72205  
(501) 614-8822  
Fax (501) 614-8826  
www.smithassociatespa.com

PETTIT & PETTIT CONSULTING ENGINEERS INC  
201 East Markham  
Suite 400  
Little Rock, AR 72201  
(501) 374-3731  
Fax (501) 374-1802

DEVELOPMENT CONSULTANTS INC  
2200 Rodney Parham Rd  
Suite 220  
Little Rock, AR 72212  
(501) 221-7880

HILL COTTAGE RENOVATION PHASE II  
  
ARKANSAS SCHOOL FOR THE BLIND / VISUALLY IMPAIRED  
LITTLE ROCK, ARKANSAS

HILL COTTAGE HVAC

PROJECT # 5102201

JANUARY 17, 2023

As-Built  
2/26/2024  
CSUSA  
No Change

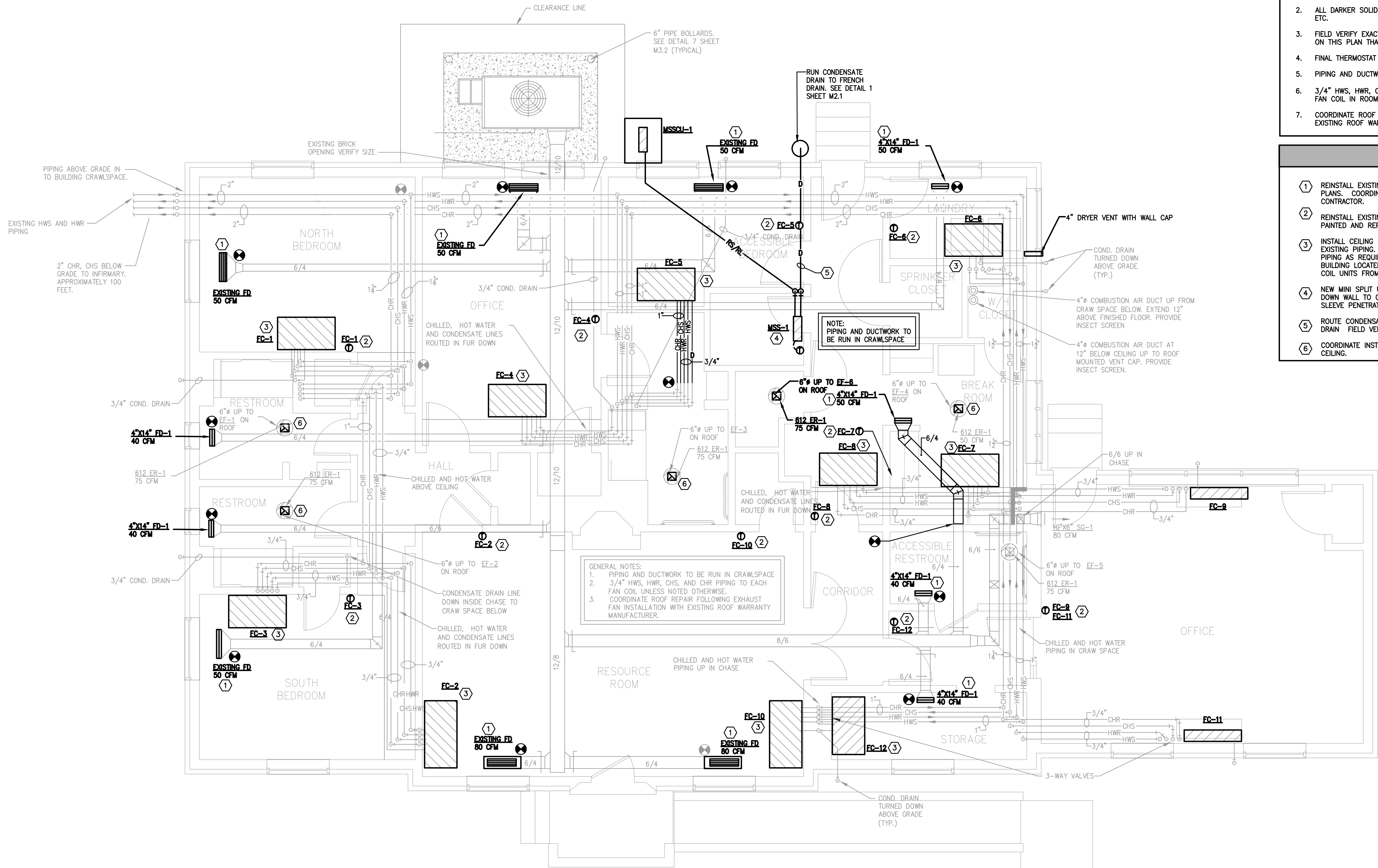
M1.1

GENERAL NOTES

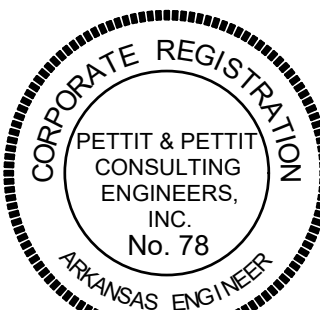
- ALL LIGHTER SOLID LINES REPRESENT PIPING, DUCTWORK, EQUIPMENT, ETC. TO REMAIN.
- ALL DARKER SOLID LINES REPRESENT NEW PIPING, DUCTWORK, EQUIPMENT, ETC.
- FIELD VERIFY EXACT SIZE AND LOCATION OF ALL EXISTING ITEMS SHOWN ON THIS PLAN THAT ARE TO BE CONNECTED TO.
- FINAL THERMOSTAT LOCATION TO BE COORDINATED WITH OWNER.
- PIPING AND DUCTWORK TO BE RUN IN CRAWLSPACE.
- 3/4" HWS, HWR, CHS, AND CHR PIPING SHALL BE EXTENDED TO EACH FAN COIL IN ROOM ABOVE UNLESS NOTED OTHERWISE.
- COORDINATE ROOF REPAIR FOLLOWING EXHAUST FAN INSTALLATION WITH EXISTING ROOF WARRANTY MANUFACTURER.

HVAC KEYED NOTES

- REINSTALL EXISTING FLOOR GRILLE AND BALANCE TO CFM AS LISTED ON PLANS. COORDINATE INSTALLATION REQUIREMENTS WITH FLOORING CONTRACTOR.
- REINSTALL EXISTING WALL MOUNTED THERMOSTATS AFTER ALL WALLS ARE PAINTED AND REPAIRED.
- INSTALL CEILING MOUNTED EXPOSED FAN COIL UNITS AND CONNECT TO EXISTING PIPING. VERIFY LOCATION AND SIZE OF EXISTING PIPING. EXTEND PIPING AS REQUIRED. FAN COIL UNITS ARE LOCATED IN OWNERS STORAGE BUILDING LOCATED ON ASBM CAMPUS. CONTRACTOR SHALL RECEIVE FAN COIL UNITS FROM OWNER AND DELIVER THEM TO THE JOB SITE.
- NEW MINI SPLIT UNIT MOUNTED ABOVE DOOR. ROUTE REFRIGERANT LINES DOWN WALL TO CRAW SPACE AND ROUTE TO OUTDOOR CONDENSING UNIT. SLEEVE PENETRATION THROUGH WALL AND CAULK ALL VOIDS.
- ROUTE CONDENSATE DRAIN THROUGH CRAWL SPACE. FULL SIZE TO FRENCH DRAIN. FIELD VERIFY LOCATION OF FRENCH DRAIN WITH EXISTING CONDITIONS.
- COORDINATE INSTALLATION OF EXISTING CEILING EXHAUST GRILLES WITH NEW CEILING.



1 HILL COTTAGE – HVAC  
SCALE: 1/4" = 1'-0"



© 2023  
PETTIT & PETTIT  
CONSULTING ENGINEERS, INC.



2701 Kavanaugh Blvd  
Suite 208  
Little Rock, AR  
72205  
(501) 614-8822  
Fax (501) 614-8826  
www.smithassociatespa.com

**PETTIT & PETTIT  
CONSULTING  
ENGINEERS INC**  
201 East Markham  
Suite 400  
Little Rock, AR  
72201  
(501) 374-3731  
Fax (501) 374-1802

DEVELOPMENT  
CONSULTANTS  
INC  
200 Rodney Parham Rd  
Suite 220  
Little Rock, AR  
72212  
(501) 221-7880

# HILL COTTAGE RENOVATION PHASE II

ARKANSAS  
SCHOOL FOR THE BLIND  
VISUALLY IMPAIRED  
LITTLE ROCK, ARKANSAS

## DETAILS

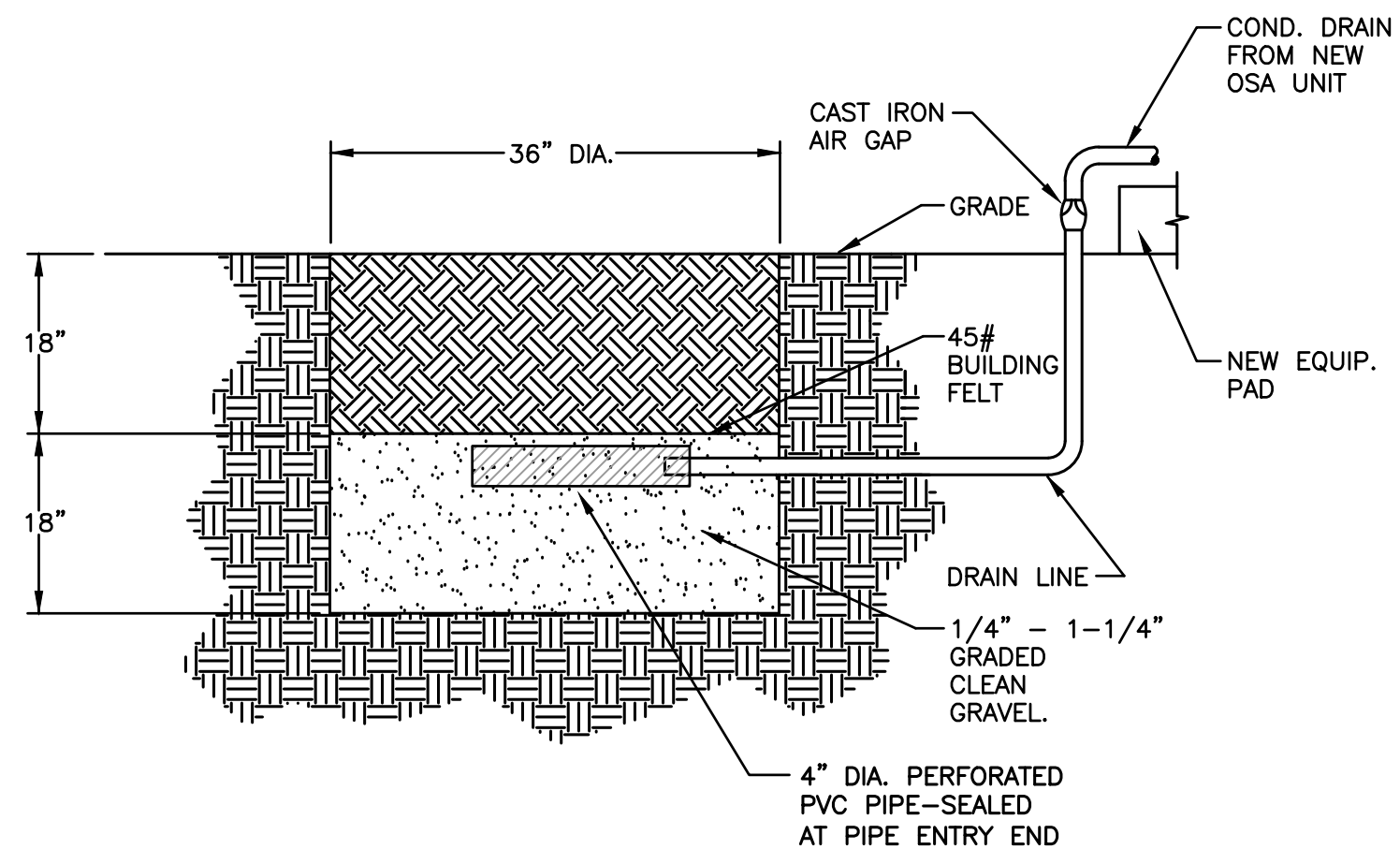
### HVAC

PROJECT # 5102201

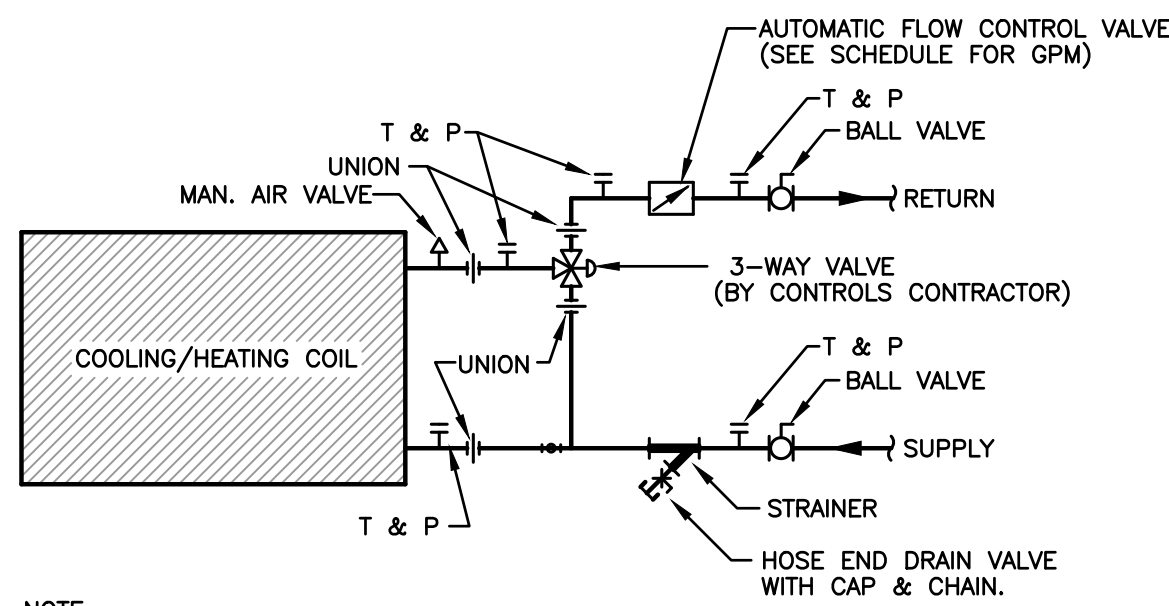
JANUARY 17, 2023

As-Built  
1/24/2026  
CSUSA  
No Change

## M2.1

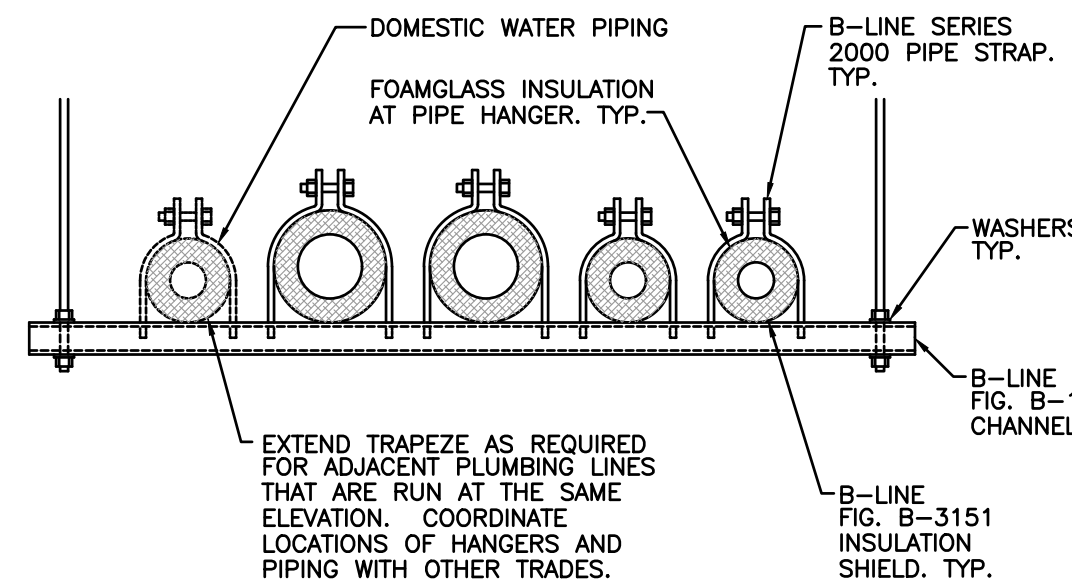


# 1 FRENCH DRAIN DETAIL

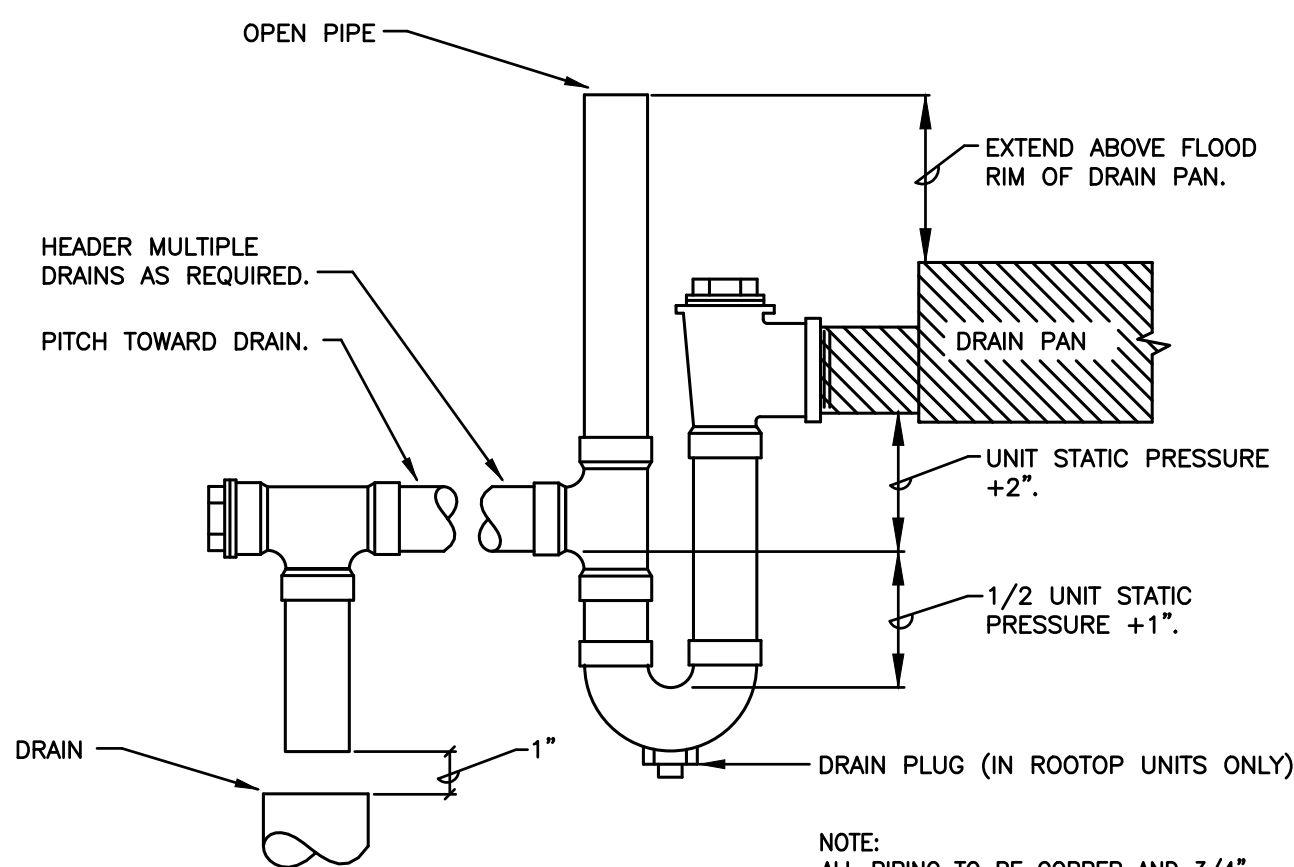


**NOTE:**  
PIPING PACKAGES SHALL BE SUPPLIED  
BY GRISWOLD, FLOW DESIGN OR  
APPROVED EQUAL.

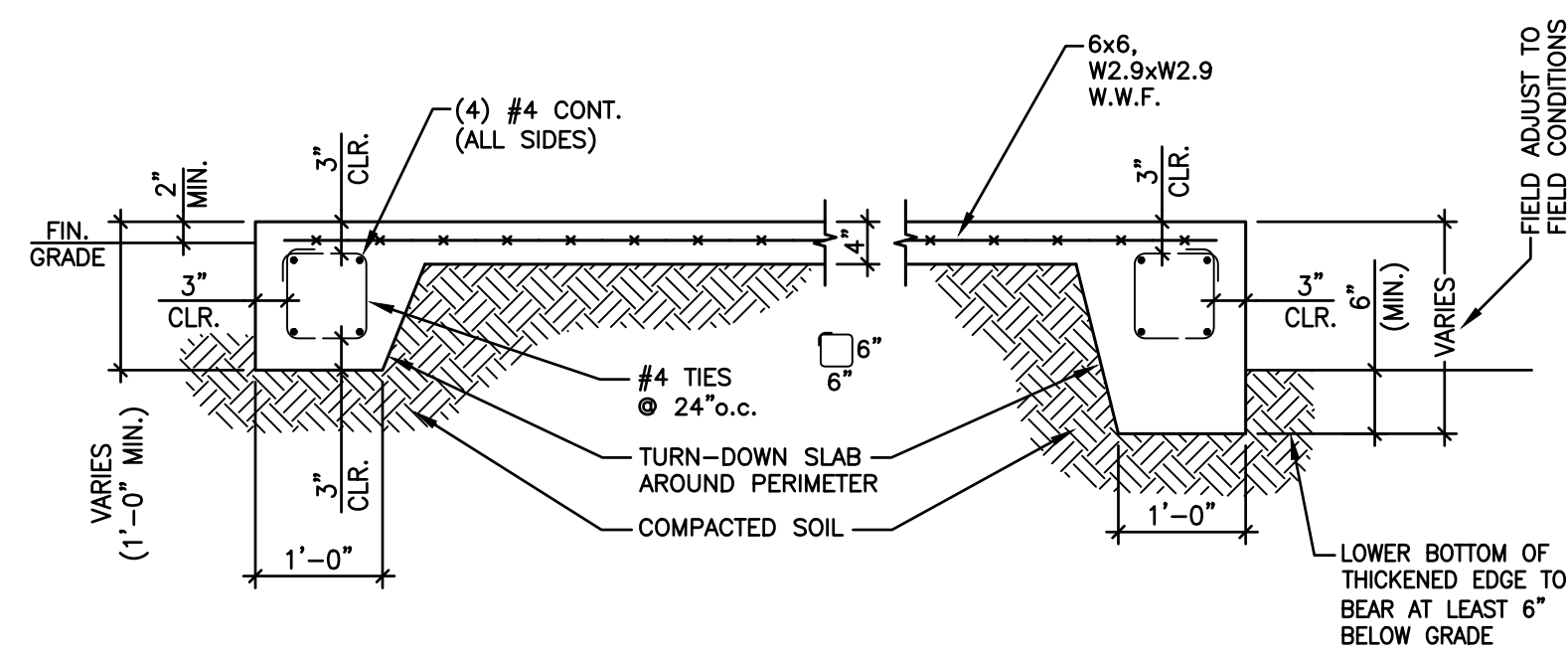
2 FAN COIL UNIT 3-WAY  
COOLING/HEATING COIL  
PIPING DETAIL  
N.T.S.



### 3 PIPE HANGER DETAIL



## 4 CONDENSATE DRAIN PIPING DETAIL



**5** EQUIPMENT PAD DETAIL  
NT.8.

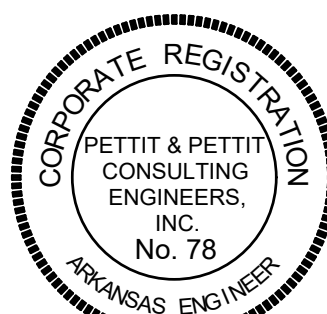
## PIPING LEGEND

— CHS —	CHILLED WATER SUPPLY
— CHR —	CHILLED WATER RETURN
— CWS —	CONDENSER WATER SUPPLY
— CWR —	CONDENSER WATER RETURN
— D —	DRAIN
— HWS —	HEATING WATER SUPPLY
— HWR —	HEATING WATER RETURN
— RS/RL —	REFRIGERANT SUCTION AND LIQUID LINES

MINI-SPLIT INDOOR A/C UNIT SCHEDULE																			
DESIG.	MFR/MDL	TYPE	LOCATION	CFM	OSA	ESP	WEIGHT	COOLING			HEATING			REFRIGERANT PIPE SIZE		ELECTRICAL DATA			REMARKS
								CAPACITY	INDOOR	OUTDOOR	CAPACITY	INDOOR	OUTDOOR	GAS	LIQUID	MCA	MOCP	VOLT/PHASE	
MSS-1	LG / LSU090HSV5	WALL MOUNTED	IT ROOM	459 / 338 / 317 / 194	--	0.00"	18.3 LBS.	9,000 BTU/H	80" d.b. 67" w.b.	95" d.b. 75" w.b.	10,900 RTU/H	70" d.b. 60" w.b.	47" d.b. 43" w.b.	3/8"	1/4"	-	-	208v / 1ϕ	(SEE SPECIFICATIONS)

MINI-SPLIT CONDENSING UNIT SCHEDULE																				
DESIG.	MFR/MDL	TYPE	SERVES	WEIGHT	COOLING			HEATING			FAN DATA			COMPRESSOR DATA			ELECTRICAL DATA			REMARKS
					CAPACITY	INDOOR	OUTDOOR	CAPACITY	INDOOR	OUTDOOR	TYPE / QUANTITY	CFM	KW	TYPE	MOTOR KW	HEATER KW	MCA	MOCP	VOLT/PHASE	
MSSCU-1	LG / LSU090HSV5	AIR COOLED	MSS-1	74.1 LBS.	9,000 BTU/H	80° d.b. 67° w.b.	95° d.b. 75° w.b.	10,900 RTU/H	70° d.b. 60° w.b.	47° d.b. 43° w.b.	1 / AXIAL	1,165	-	DC INV-TWIN ROTARY	--	--	10	15	208 V/ 1Ø	(SEE SPECIFICATIONS)

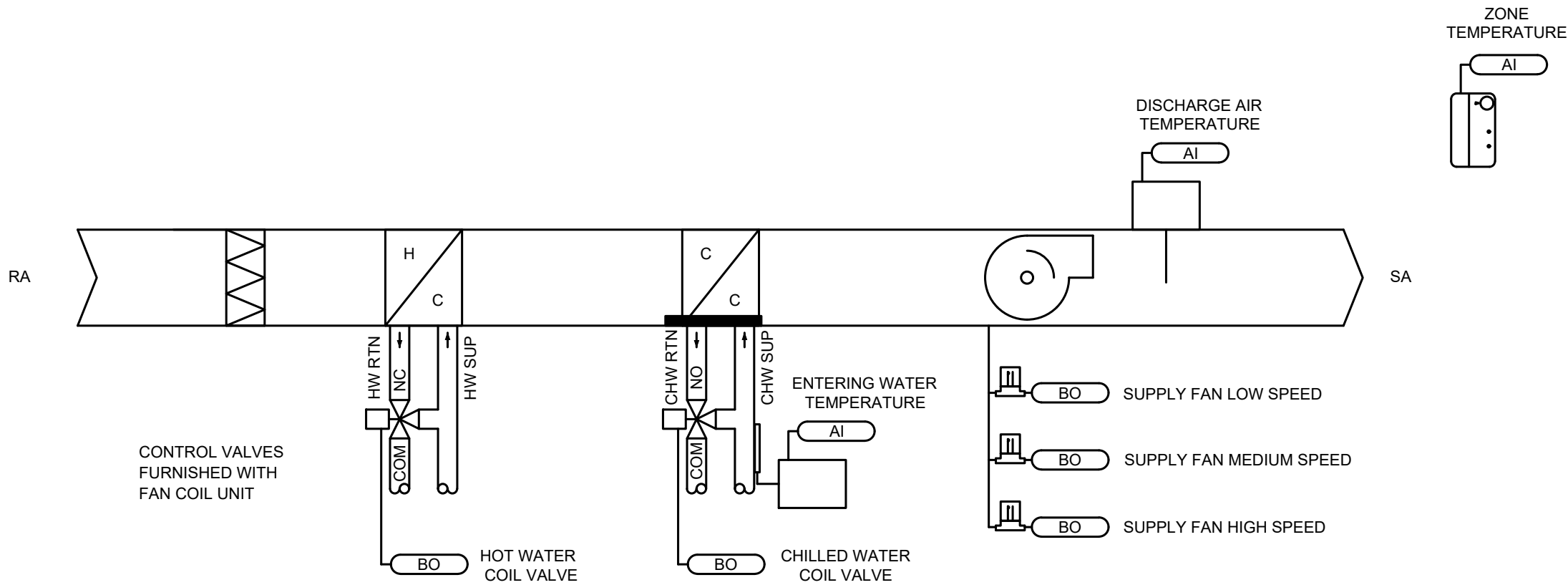
EXHAUST FAN SCHEDULE																
DESIG.	MFR/MDL	SERVES	LOCAT.	TYPE	FAN DATA							MOTOR DATA				REMARKS
					CFM	S.P.	RPM	DRIVE	TYPE	DIA.	SONES	RPM	BHP	HP	VOLT/PH	
EF-6	COOK / ACED 70C10DL	GIRL'S COTTAGE KITCHEN	ROOF	ROOF DN. BLAST	60	.15	1,160	DIRECT	CENT.	--	3.0	1,750	71 W	0.04	120/1ø	PROVIDE ROOF CURB, SPEED CONTROL, MOTORIZED BACKDRAFT DAMPER, & DISCONNECT. FAN TO BE CONTROLLED BY BMS.



© 2023  
PETTIT & PETTIT  
CONSULTING ENGINEERS, INC.



FANCOIL UNIT SCHEDULE																									
DESIG.	MFR/MDL	TYPE	LOCAT.	CFM	ESP	CHILLED WATER COIL (3 ROW)								HEATING WATER COIL (1 ROW)								MOTOR		REMARKS	
						EAT	LAT	EWT	LWT	GPM	PD	TH(MBH)	SH(MBH)	PIPE SIZE	EAT	LAT	EWT	LWT	GPM	PD	MBH	PIPE SIZE	HP.(S)		VOLT/PHASE
FC-1	TRANE / FCD8060	CEILING MOUNTED CABINET	GIRL'S COTTAGE	541	-	75° db 63° wb	56.62° db 55.46° wb	45° F	54.3° F	2.5	2.87'	11.37	10.06	3/4"	70°	85.29°	180°	171.61°	2.0	1.12'	8.40	3/4"	0.220	115V/1ø	REFER TO SPECIFICATIONS. COILS RATED FOR 30% ETHYLENE GLYCOL MIXTURE. FAN COIL UNIT PROVIDED TO OWNER IN PREVIOUS PHASE. CONTRACTOR SHALL RECEIVE UNITS FROM OWNER'S ON-CAMPUS STORAGE AND INSTALL AS SHOWN. RATINGS FROM REFERENCE ONLY
FC-2	TRANE / FCD8060	CEILING MOUNTED CABINET	GIRL'S COTTAGE	659	-	75° db 63° wb	56.76° db 55.56° wb	45° F	55.8° F	2.5	2.88'	13.24	11.77	3/4"	70°	85.75°	180°	169.81	2.0	1.35'	10.21	3/4"	0.220	115V/1ø	REFER TO SPECIFICATIONS. COILS RATED FOR 30% ETHYLENE GLYCOL MIXTURE. FAN COIL UNIT PROVIDED TO OWNER IN PREVIOUS PHASE. CONTRACTOR SHALL RECEIVE UNITS FROM OWNER'S ON-CAMPUS STORAGE AND INSTALL AS SHOWN. RATINGS FROM REFERENCE ONLY
FC-3	TRANE / FCD8060	CEILING MOUNTED CABINET	GIRL'S COTTAGE	541	-	75° db 63° wb	56.62° db 55.46° wb	45° F	54.3° F	2.5	2.87'	11.37	10.06	3/4"	70°	85.29°	180°	171.61°	2.0	1.12'	8.40	3/4"	0.220	115V/1ø	REFER TO SPECIFICATIONS. COILS RATED FOR 30% ETHYLENE GLYCOL MIXTURE. FAN COIL UNIT PROVIDED TO OWNER IN PREVIOUS PHASE. CONTRACTOR SHALL RECEIVE UNITS FROM OWNER'S ON-CAMPUS STORAGE AND INSTALL AS SHOWN. RATINGS FROM REFERENCE ONLY
FC-4	TRANE / FCD8060	CEILING MOUNTED CABINET	GIRL'S COTTAGE	541	-	75° db 63° wb	56.62° db 55.46° wb	45° F	54.3° F	2.5	2.87'	11.37	10.06	3/4"	70°	85.29°	180°	171.61°	2.0	1.12'	8.40	3/4"	0.220	115V/1ø	REFER TO SPECIFICATIONS. COILS RATED FOR 30% ETHYLENE GLYCOL MIXTURE. FAN COIL UNIT PROVIDED TO OWNER IN PREVIOUS PHASE. CONTRACTOR SHALL RECEIVE UNITS FROM OWNER'S ON-CAMPUS STORAGE AND INSTALL AS SHOWN. RATINGS FROM REFERENCE ONLY
FC-5	TRANE / FCD8060	CEILING MOUNTED CABINET	GIRL'S COTTAGE	541	-	75° db 63° wb	56.62° db 55.46° wb	45° F	54.3° F	2.5	2.87'	11.37	10.06	3/4"	70°	85.29°	180°	171.61°	2.0	1.12'	8.40	3/4"	0.220	115V/1ø	REFER TO SPECIFICATIONS. COILS RATED FOR 30% ETHYLENE GLYCOL MIXTURE. FAN COIL UNIT PROVIDED TO OWNER IN PREVIOUS PHASE. CONTRACTOR SHALL RECEIVE UNITS FROM OWNER'S ON-CAMPUS STORAGE AND INSTALL AS SHOWN. RATINGS FROM REFERENCE ONLY
FC-6	TRANE / FCD8060	CEILING MOUNTED CABINET	GIRL'S COTTAGE	541	-	75° db 63° wb	56.62° db 55.46° wb	45° F	54.3° F	2.5	2.87'	11.37	10.06	3/4"	70°	85.29°	180°	171.61°	2.0	1.12'	8.40	3/4"	0.220	115V/1ø	REFER TO SPECIFICATIONS. COILS RATED FOR 30% ETHYLENE GLYCOL MIXTURE. FAN COIL UNIT PROVIDED TO OWNER IN PREVIOUS PHASE. CONTRACTOR SHALL RECEIVE UNITS FROM OWNER'S ON-CAMPUS STORAGE AND INSTALL AS SHOWN. RATINGS FROM REFERENCE ONLY
FC-7	TRANE / FCD8060	CEILING MOUNTED CABINET	GIRL'S COTTAGE	541	-	75° db 63° wb	56.62° db 55.46° wb	45° F	54.3° F	2.5	2.87'	11.37	10.06	3/4"	70°	85.29°	180°	171.61°	2.0	1.12'	8.40	3/4"	0.220	115V/1ø	REFER TO SPECIFICATIONS. COILS RATED FOR 30% ETHYLENE GLYCOL MIXTURE. FAN COIL UNIT PROVIDED TO OWNER IN PREVIOUS PHASE. CONTRACTOR SHALL RECEIVE UNITS FROM OWNER'S ON-CAMPUS STORAGE AND INSTALL AS SHOWN. RATINGS FROM REFERENCE ONLY
FC-8	TRANE / FCD8060	CEILING MOUNTED CABINET	GIRL'S COTTAGE	541	-	75° db 63° wb	56.62° db 55.46° wb	45° F	54.3° F	2.5	2.87'	11.37	10.06	3/4"	70°	85.29°	180°	171.61°	2.0	1.12'	8.40	3/4"	0.220	115V/1ø	REFER TO SPECIFICATIONS. COILS RATED FOR 30% ETHYLENE GLYCOL MIXTURE. FAN COIL UNIT PROVIDED TO OWNER IN PREVIOUS PHASE. CONTRACTOR SHALL RECEIVE UNITS FROM OWNER'S ON-CAMPUS STORAGE AND INSTALL AS SHOWN. RATINGS FROM REFERENCE ONLY
FC-9	TRANE / FCBB06	FLOOR MOUNTED CABINET	GIRL'S COTTAGE	374	-	75° db 63° wb	57.01° db 56.08° wb	44° F	51.1° F	2.5	2.87'	7.52	7.06	3/4"	70°	96.61°	180°	139.5°	2.0	1.18'	10.5	3/4"	0.120	115V/1ø	REFER TO SPECIFICATIONS. COILS RATED FOR 30% ETHYLENE GLYCOL MIXTURE. FAN COIL UNIT PROVIDED TO OWNER IN PREVIOUS PHASE. CONTRACTOR SHALL RECEIVE UNITS FROM OWNER'S ON-CAMPUS STORAGE AND INSTALL AS SHOWN. RATINGS FROM REFERENCE ONLY
FC-10	TRANE / FCD8060	CEILING MOUNTED CABINET	GIRL'S COTTAGE	659	-	75° db 63° wb	56.76° db 55.56° wb	45° F	55.8° F	2.5	2.88'	13.24	11.77	3/4"	70°	85.75°	180°	169.81	2.0	1.35'	10.21	3/4"	0.220	115V/1ø	REFER TO SPECIFICATIONS. COILS RATED FOR 30% ETHYLENE GLYCOL MIXTURE. FAN COIL UNIT PROVIDED TO OWNER IN PREVIOUS PHASE. CONTRACTOR SHALL RECEIVE UNITS FROM OWNER'S ON-CAMPUS STORAGE AND INSTALL AS SHOWN. RATINGS FROM REFERENCE ONLY
FC-11	TRANE / FCBB06	FLOOR MOUNTED CABINET	GIRL'S COTTAGE	374	-	75° db 63° wb	57.01° db 56.08° wb	44° F	51.1° F	2.5	2.87'	7.52	7.06	3/4"	70°	96.61°	180°	139.5°	2.0	1.18'	10.5	3/4"	0.120	115V/1ø	REFER TO SPECIFICATIONS. COILS RATED FOR 30% ETHYLENE GLYCOL MIXTURE. FAN COIL UNIT PROVIDED TO OWNER IN PREVIOUS PHASE. CONTRACTOR SHALL RECEIVE UNITS FROM OWNER'S ON-CAMPUS STORAGE AND INSTALL AS SHOWN. RATINGS FROM REFERENCE ONLY
FC-12	TRANE / FCD8060	CEILING MOUNTED CABINET	GIRL'S COTTAGE	541	-	75° db 63° wb	56.62° db 55.46° wb	45° F	54.3° F	2.5	2.87'	11.37	10.06	3/4"	70°	85.29°	180°	171.61°	2.0	1.12'	8.40	3/4"	0.220	115V/1ø	REFER TO SPECIFICATIONS. COILS RATED FOR 30% ETHYLENE GLYCOL MIXTURE. FAN COIL UNIT PROVIDED TO OWNER IN PREVIOUS PHASE. CONTRACTOR SHALL RECEIVE UNITS FROM OWNER'S ON-CAMPUS STORAGE AND INSTALL AS SHOWN. RATINGS FROM REFERENCE ONLY



FAN COIL UNIT

FAN COIL UNIT CONTROL

BUILDING AUTOMATION SYSTEM INTERFACE:  
THE BAS WILL SEND OCCUPIED, UNOCCUPIED, OPTIMAL START AND TIMED OVERRIDE COMMANDS.

UNOCCUPIED:  
WHEN THE SPACE TEMPERATURE IS BELOW THE UNOCCUPIED HEATING SETPOINT (60°F ADJ) THE SUPPLY FAN WILL START AND THE HOT WATER VALVE WILL OPEN. WHEN THE SPACE TEMPERATURE RISES ABOVE THE UNOCCUPIED HEATING SETPOINT (60°F ADJ) PLUS THE UNOCCUPIED DIFFERENTIAL (2°F ADJ) THE SUPPLY FAN WILL STOP AND THE HOT WATER VALVE WILL CLOSE.

WHEN THE SPACE TEMPERATURE IS ABOVE THE UNOCCUPIED COOLING SETPOINT (85°F ADJ) THE SUPPLY FAN WILL START AND THE CHILLED WATER VALVE WILL OPEN. WHEN THE SPACE TEMPERATURE FALLS BELOW THE UNOCCUPIED COOLING SETPOINT (85°F ADJ) MINUS THE UNOCCUPIED DIFFERENTIAL (2°F ADJ) THE SUPPLY FAN WILL STOP AND THE CHILLED WATER VALVE WILL CLOSE.

OCCUPIED:  
DURING OCCUPIED PERIODS THE SUPPLY FAN WILL CYCLE ON A CALL FOR HEATING OR COOLING. ALL VALVES WILL OPEN TO MAINTAIN THE ACTIVE SPACE TEMPERATURE SETPOINT.

SPACE TEMPERATURE CONTROL:  
THE SPACE TEMPERATURE SHALL BE MAINTAINED BETWEEN THE OCCUPIED COOLING SETPOINT (75°F ADJ) AND THE OCCUPIED HEATING SETPOINT (70°F ADJ). THE UNIT WILL TRANSITION TO THE COOLING MODE WHEN THE SPACE TEMPERATURE RISES ONE DEGREE ABOVE THE OCCUPIED COOLING SETPOINT (75°F ADJ). THE UNIT WILL TRANSITION TO THE HEATING MODE WHEN THE SPACE TEMPERATURE DROPS ONE DEGREE BELOW THE OCCUPIED HEATING SETPOINT (70°F ADJ).

SUPPLY FAN OPERATION:  
THE FAN WILL BE OFF IN THE UNOCCUPIED MODE. WHEN THE CONTROLLER IS IN THE OCCUPIED MODE, THE SUPPLY FAN WILL AUTOMATICALLY SWITCH SPEEDS DEPENDING ON THE DIFFERENCE BETWEEN THE ZONE TEMPERATURE AND THE ACTIVE ZONE SETPOINT. THE FAN SPEED SHALL INCREASE AS THE DIFFERENCE INCREASES AND DECREASE AS THE DIFFERENCE DECREASES. IF THE SUPPLY FAN FAILS THE FAN WILL BE COMMANDED OFF AND AN ALARM WILL BE ANNUNCIATED. A MANUAL RESET IS REQUIRED TO RESTART THE FAN.

LEGEND

- AIR VENT (AUTO/HAND)
- BUTTERFLY VALVE
- AUTOMATIC CONTROL VALVE (3-WAY)
- AUTOMATIC CONTROL VALVE
- CHECK VALVE
- FLEXIBLE CONNECTOR (BRAIDED)
- GATE VALVE
- GLOBE VALVE (STRAIGHT)
- PLUG VALVE
- PRESSURE GAUGE (W/COCK)
- PRESSURE GAUGE
- PRESSURE RELIEF VALVE
- PRESSURE AND TEMPERATURE TAP
- REDUCER (CONCENTRIC)
- REDUCER (ECCENTRIC)
- STRAINER (WITH BLOW DOWN VALVE)
- THERMOMETER
- TO FLOOR DRAIN
- UNION (FLANGED, SCREWED)

SMITH ASSOCIATES

ARCHITECTS, P.A.

2701 Kavanaugh Blvd  
Suite 208  
Little Rock, AR 72205  
(501) 614-8822  
Fax (501) 614-8826  
www.smithassociatespa.com

PETTIT & PETTIT  
CONSULTING  
ENGINEERS INC  
201 East Markham  
Suite 400  
Little Rock, AR 72201  
(501) 374-3731  
Fax (501) 374-1802

DEVELOPMENT  
CONSULTANTS  
INC  
2200 Rodney Parham Rd  
Suite 220  
Little Rock, AR 72212  
(501) 221-7880

HILL COTTAGE  
RENOVATION  
PHASE II

ARKANSAS  
SCHOOL FOR THE BLIND  
/ VISUALLY IMPAIRED  
LITTLE ROCK, ARKANSAS

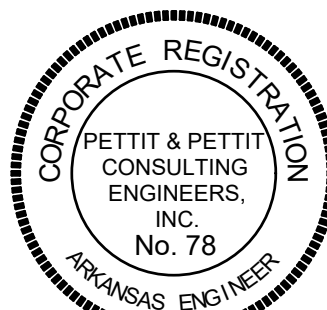
SCHEDULES  
HVAC

PROJECT # 5102201

JANUARY 17, 2023

As-Builts  
2/26/2024  
CSUSA  
No Change

M3.1



© 2023  
PETTIT & PETTIT  
CONSULTING ENGINEERS, INC.

SMITH ASSOCIATES

ARCHITECTS, P.A.  
2701 Kavanaugh Blvd  
Suite 208  
Little Rock, AR  
72205  
(501) 614-8826  
Fax (501) 614-8826  
www.smithassociatespa.com

PETTIT & PETTIT CONSULTING ENGINEERS INC  
201 East Markham  
Suite 400  
Little Rock, AR  
72201  
(501) 374-3731  
Fax (501) 374-1802

DEVELOPMENT CONSULTANTS INC  
2200 Rodney Parham Rd  
Suite 220  
Little Rock, AR  
72212  
(501) 221-7880

HILL COTTAGE RENOVATION PHASE II

ARKANSAS SCHOOL FOR THE BLIND / VISUALLY IMPAIRED  
LITTLE ROCK, ARKANSAS

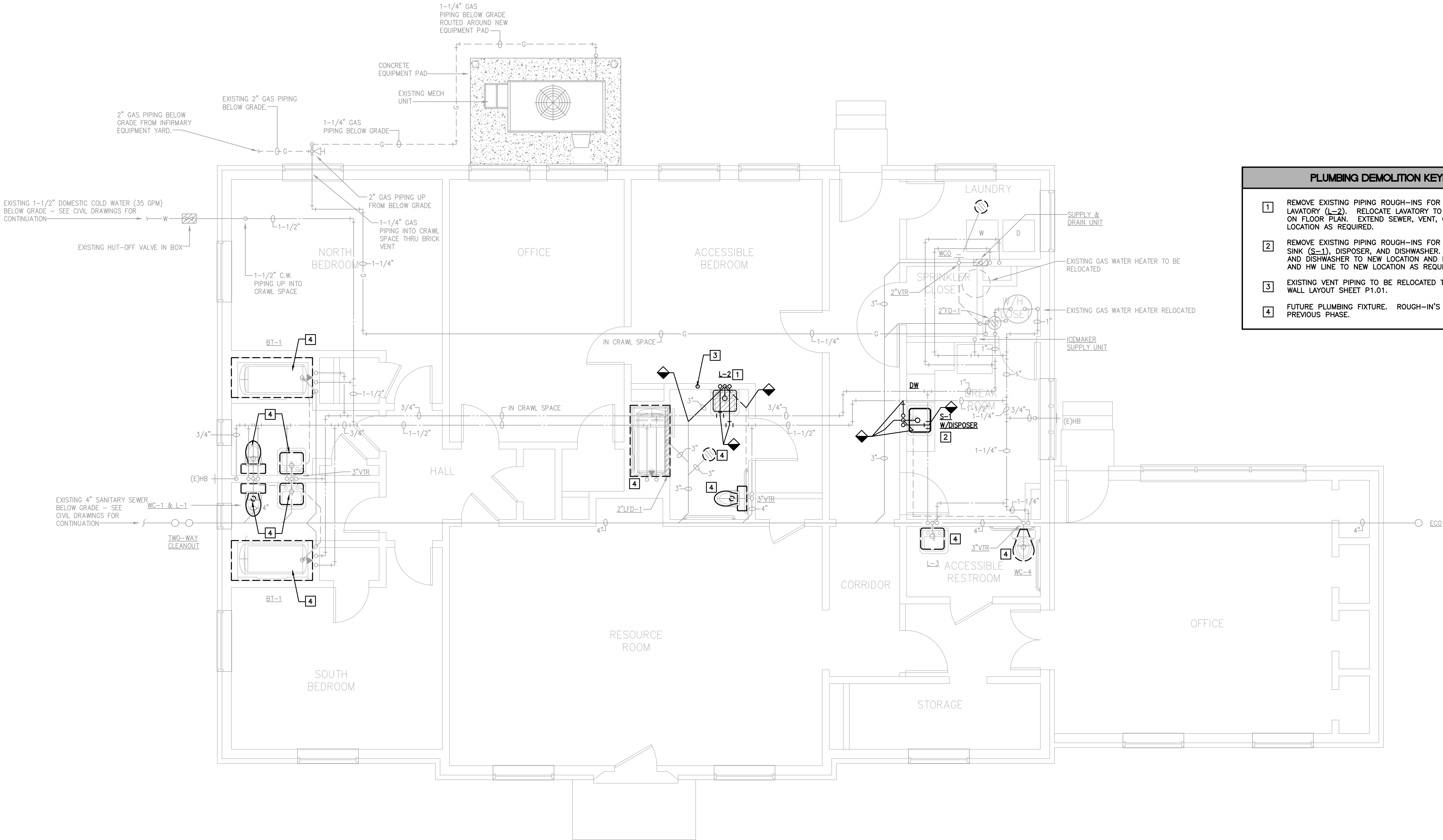
DEMO FLOOR PLAN - PLUMBING

PROJECT # 5102201

JANUARY 17, 2023

As-Built  
2/26/2024  
CSUSA  
No Change

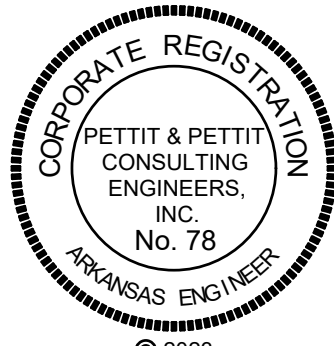
DP0.1



- PLUMBING DEMOLITION KEYED NOTES
- 1. REMOVE EXISTING PIPING ROUGH-INS FOR FUTURE WALL MOUNTED LAVATORY (L-2). RELOCATE LAVATORY TO NEW LOCATION AS SHOWN ON FLOOR PLAN. EXTEND SEWER, VENT, CW AND HW LINES TO NEW LOCATION AS REQUIRED.
  - 2. REMOVE EXISTING PIPING ROUGH-INS FOR FUTURE COUNTER MOUNTED SINK (S-1), DISPOSER, AND DISHWASHER. RELOCATE SINK, DISPOSER, AND DISHWASHER TO NEW LOCATION AND EXTEND SEWER, VENT, CW AND HW LINE TO NEW LOCATION AS REQUIRED.
  - 3. EXISTING VENT PIPING TO BE RELOCATED TO NEW WALL. SEE NEW WALL LAYOUT SHEET P1.01.
  - 4. FUTURE PLUMBING FIXTURE. ROUGH-INS WERE PERINSTALLED IN PREVIOUS PHASE.

- NOTES
- 1. FOR DEMOLITION, REFER TO ARCHITECTURAL DEMOLITION DRAWINGS AND PLUMBING GENERAL NOTES.
  - 2. ALL SANITARY SEWER AND VENT PIPING SHALL BE 2" SIZE UNLESS NOTED OTHERWISE.
  - 3. ALL HOT AND COLD WATER PIPING SHALL BE 1/2" SIZE UNLESS NOTED OTHERWISE.

1 DEMOLITION FLOOR PLAN – PLUMBING  
SCALE: 1/4" = 1'-0"





PLUMBING FIXTURE SCHEDULE

1.

WATER CLOSET WC-1: EXISTING TO BE REUSED;  
SUPPLIES: MCGUIRE 2166CC WHEEL HANDLE STOP;  
SEAT: CENTOCO 440STSS, FINISH WHITE.
2.

WATER CLOSET WC-2: EXISTING TO BE REUSED;  
SUPPLIES: MCGUIRE 2166CC WHEEL HANDLE STOP;  
SEAT: CENTOCO 800STSS, FINISH WHITE.
3.

WATER CLOSET WC-3(ADA): AMERICAN STANDARD 215AA.004 "CADET PRO" VITREOUS CHINA, ELONGATED BOWL,  
FLOOR MOUNTED, 16-1/2" HIGH;  
SUPPLIES: MCGUIRE 2166CC WHEEL HANDLE STOP;  
SEAT: CENTOCO 800STSS, FINISH WHITE.
4.

WATER CLOSET WC-4(ADA): AMERICAN STANDARD 3043.001 "MADERA", VITREOUS CHINA, ELONGATED BOWL,  
FLOOR MOUNTED, 16-1/2" HIGH;  
TRIM: SLOAN 111 ES-S-TMO-YB-YC "OPTIMA" EXPOSED SENSOR OPERATED FLUSH VALVE, TRUE MECHANICAL  
OVERRIDE PUSHBUTTON, 1.6 GALLON FLUSH CYCLE, EL-154 TRANSFORMER, EL-Z26 EXTENSION NIPPLE;  
SEAT: CENTOCO 1500 CCSS, FINISH WHITE.
5.

LAVATORY L-1: EXISTING TO BE REUSED;  
TRIM: T&S BRASS B-2710-WF05, 4" CENTERSET FAUCET, 0.5 GPM VANDAL-RESISTANT SPRAY DEVICE, CERAMIC  
DISC, SINGLE LEVER HANDLE, POP-UP DRAIN.
6.

LAVATORY L-2(ADA): AMERICAN STANDARD 0355.012 "LUCERNE", VITREOUS CHINA, RECTANGULAR BASIN,  
20"x18" SIZE, FRONT OVERFLOW, WALL MOUNTED;  
TRIM: T&S BRASS B-2710-WF05, 4" CENTERSET FAUCET, 0.5 GPM VANDAL-RESISTANT SPRAY DEVICE, CERAMIC  
DISC, SINGLE LEVER HANDLE, POP-UP DRAIN;  
INSULATION KIT: TRUEBRO 103 E-Z "LAVGUARD";  
SUPPORT: ZURN Z-1231.
7.

LAVATORY L-3(ADA): AMERICAN STANDARD 0356.421 "LUCERNE", VITREOUS CHINA, RECTANGULAR BASIN,  
20"x18" SIZE, FRONT OVERFLOW, WALL MOUNTED;  
TRIM: SLOAN ETf-610-LT-BDT SENSOR OPERATED FAUCET, 0.5 GPM VANDAL-RESISTANT AERATOR, BELOW  
DECK THERMOSTATIC MIXING VALVE, EL-154 TRANSFORMER, MCGUIRE 155-WC DRAIN;  
INSULATION KIT: TRUEBRO 103 E-Z "LAVGUARD";  
SUPPORT: ZURN Z-1231.
8.

SINK S-1: EXISTING TO BE REUSED.
9.

BATHTUB BT-1: HAMILTON G6034 TS , RIGHT OR LEFT, 60" X 34" X 82" SIZE ACRYLIC BATH AND SHOWER  
MODULE , INTEGRAL SOAP LEDGE; TRIM: SYMMONS S-9606-PLR-2.0-231-B-X "ORIGINS" PRESSURE BALANCING  
MIXING VALVE, ALL BRASS CONSTRUCTION, COMBINATION LEVER DIVERTER WITH VOLUME CONTROL, ADJUSTABLE  
STOP SCREW, INTERGRAL SERVICE STOPS, DIVERTER VALVE, "SUPER" C.P. BRASS SHOWERHEAD WITH ARM AND  
FLANGE, WALL CONNECTION AND FLANGE, IN-LINE VACUUM BREAKER, 36" SLIDE BAR, TUB SPOUT, KOHLER K-7161-AF  
POP-UP DRAIN, HEAVY DUTY SHOWER ROD AND CERTAIN, BRASS ESCUTCHEON (CHROME).
10.

SHOWER BT-2(ADA): FREEDOM SHOWERS APTG3260TSADA3P , RIGHT OR LEFT, 60" X 32.5" X 80.25" SIZE  
ACRYLIC BATH AND SHOWER MODULE, INTEGRAL SOAP LEDGE, GRAB BARS, FACTORY INSTALLED FOLD-DOWN  
SEAT; TRIM: SYMMONS S-9606-PLR-2.0-231-B-X "ORIGINS" PRESSURE BALANCING MIXING VALVE, ALL BRASS  
CONSTRUCTION, COMBINATION LEVER DIVERTER WITH VOLUME CONTROL, ADJUSTABLE STOP SCREW, INTERGRAL  
SERVICE STOPS, DIVERTER VALVE, "SUPER" C.P. BRASS SHOWERHEAD WITH ARM AND FLANGE, WALL  
CONNECTION AND FLANGE, IN-LINE VACUUM BREAKER, 36" SLIDE BAR, TUB SPOUT, KOHLER K-7161-AF  
POP-UP DRAIN, HEAVY DUTY SHOWER ROD AND CERTAIN, BRASS ESCUTCHEON (CHROME).
11.

SUPPLY AND DRAIN UNIT: GUY GRAY MODEL FB-200, 11-5/8"x9-1/2"x3-1/2" SIZE, 1/2" BRASS CONNECTORS,  
STEEL CONSTRUCTION, 2" DRAIN PIPE.
12.

ICEMAKER SUPPLY UNIT: GUY GRAY MODEL 88158, 9-1/2"x11-5/8" SIZE, 1/2"x1/4" COMPRESSION ANGLE  
VALVE, STEEL CONSTRUCTION.
13.

DISPOSER: EXISTING TO BE REUSED.
14.

DISHWASHER: EXISTING TO BE REUSED.
15.

ELECTRIC WATER COOLER FWC-1(TDA) - 985 MODEL P088FSL WITH BOTTLE FILLING STATION WITH  
INTEGRAL SWIFLO FOUNTAIN, B-L-LEVEL, REFRIGERATED FILTERED STAINLESS CHILLING CAPACITY OF  
8.0 GPH OF 50 DEGREE DRINKING WATER, BASED ON 80 DEGREE INLET WATER AND 90 DEGREE AMBIENT,  
HANDS FREE VISUAL FILTER MONITOR, FILTERED, ANTIMICROBIAL, REAL DRAIN, FURNISHED WITH FLEXI GUARD  
SAFETY BUBBLER, ELECTRONIC BOTTLE FILLER SENSOR WITH MECHANICAL FRONT BUBBLER  
BUTTON ACTIVATION, WALL MOUNTED WITH INWALL FRAME AND PLATE, STAINLESS STEEL ACCESS  
PANEL;  
SUPPLIES - MCGUIRE H-ST2LK HEAVY CAST BRASS STRAIGHT STOP WITH LOOSE KEY HANDLE, 1/8" INCH SIZE;  
TRAP - MCGUIRE 8088 (1-1/4" INCH) POLISHED CHROME PLATED CAST BRASS ADJUSTABLE GROUND SWIVEL  
PATTERN WITH CLEANOUT;  
SUPPORT - ZURN Z-1025-BL "RIGID PLATE SYSTEM" HAVING STEEL UPRIGHTS WITH SUPPORT PLATES, AND  
BEARING JACKS ON ADJUSTABLE HEADERS AS REQUIRED FOR B-L-LEVEL MOUNTING. VERIFY EXACT  
CARRIER REQUIRED WHEN MOUNTED ON CONCRETE BLOCK WALLS.
16.

SERVICE SINK SS-1 - WILLIAMS MODEL SB-900, TERRAZZO, 24"X24"X12" SIZE, ONE PIECE STAINLESS STEEL, CAP, T- 40  
WCP HANGER, T-35 HOSE AND WALL BRACKET, 8P" STAINLESS STEEL SPLASH BACK PANELS, T & S B-0065-  
BSTP FAUCET, POLISHED CHROME FINISH INTEGRAL STOPS, TOP BRACE, LEVER HANDLES, VACUUM BREAKER, 8"  
CENTERS.

PLUMBING LEGEND

SYMBOL	DESCRIPTION		
	SOIL, WASTE, OR SANITARY SEWER		
	SANITARY SEWER (ON SITE)		
	SANITARY VENT		
	GREASE WASTE		
	COMBINATION WASTE AND VENT		
	ACID WASTE		
	ACID VENT		
	WATER (ON SITE)		
	COLD WATER		
	HOT WATER		
	HOT WATER RETURN		
	160° HOT WATER		
	NON-POTABLE WATER		
	STORM DRAIN		
	INDIRECT DRAIN		
	OVERFLOW STORM DRAIN		
	SUMP PUMP DISCHARGE		
	NATURAL GAS (LOW PRESSURE GAS)		
	LAB AIR		
	LAB VACUUM		
	FLOW DIRECTION		
	GATE VALVE		
	GLOBE VALVE		
	CHECK VALVE		
	BALL VALVE		
	PLUG COCK - GAS COCK		
	PRESSURE REDUCING VALVE		
	STRAINER		
	UNION		
	FLOOR DRAIN		
	ROOF DRAIN		
	ACCESS DOOR		
	VENT THRU ROOF		
	HOSE BIBB		
	FREEZE PROOF WALL HYDRANT		
	CLEANOUT PLUG		
	FLOOR CLEANOUT		
	FLOOR CLEANOUT WITH ACID RESISTANT PIPING AND FITTINGS		
	WALL CLEANOUT		
	EXTERIOR CLEANOUT		
	DENOTES - SANITARY VENT STACK THRU ROOF		
	RISER DESIGNATION		
	NEW CONNECTION TO EXISTING		
	EXISTING PIPING TO BE REMOVED OR ABANDONED		
	EXISTING PIPING TO REMAIN		
	CAP AND SEAL AIR OR WATER TIGHT		
	TERMINATION POINT OF DEMOLITION		

FIXTURE LEGEND

SYMBOL	DESCRIPTION
	NEW FIXTURE
	ROUGH IN AND FINAL CONNECT ONLY
	EXISTING FIXTURE TO REMAIN
	EXISTING FIXTURE TO BE REMOVED
	EXISTING FIXTURE (RELOCATED, OR REPAIRED - SEE NOTES)

PLUMBING GENERAL NOTES

1.

THE CONTRACTOR SHALL, PRIOR TO THE START OF ANY WORK UNDER THIS CONTRACT, JOB SITE  
VERIFY SIZE, LOCATION, ETC. OF ANY EXISTING PIPING NOTED, SHOWN OR IMPLIED, TO WHICH NEW  
PIPING IS RELATED OR CONNECTED.
2.

HOT AND COLD WATER SUPPLIES TO FIXTURES SHALL BE AS FOLLOWS, UNLESS SHOWN OR NOTED  
OTHER WISE.
- WATER CLOSET(FLUSH VALVE)

WATER CLOSET(TANK)

LAVATORY

ICEMAKER

SHOWER/BATHTUB

WASHER (RESIDENTIAL)

SINK

1-1/4"

1/2"

1/2"

1/2"

1/2"

1/2"
3.

PROVIDE AIR CHAMBERS ON ALL HOT AND COLD WATER SUPPLIES TO AND FOR EACH FIXTURE, THE  
SAME DIAMETER AS THE SUPPLY AND 18" LONG. SEE GENERAL NOTE NUMBER 2.
4.

ALL SUPPLIES TO FIXTURE SHALL BE PROVIDED WITH HIGH EAR COUPLING EQUAL TO MUELLER CO.  
No. C-100HE (1/2", 3/4" OR 1" SIZE) AT THE WALL (ANCHOR TO CROSS MEMBER SUPPORT)  
BEFORE PIPE ENTERS ROOM SPACE TO ASSURE NO PIPE MOVEMENT WITHIN WALL CAVITY.
5.

IN ALL AREAS SUBJECT TO FREEZING WHERE PLUMBING FIXTURES ARE LOCATED ON EXTERIOR WALL,  
WATER PIPING SHALL BE INSTALLED ON THE THERMAL SIDE OF THE BUILDING WALL INSULATION.
6.

CLOSE COORDINATION AND COOPERATION SHALL BE MAINTAINED BETWEEN TRADES WITH REGARD TO  
PLUMBING, HVAC, FIRE PROTECTION AND ELECTRICAL PLANS.
7.

CUT WALLS, FLOORS, OR CEILINGS AS REQUIRED TO INSTALL NEW PIPING. ALL FURRING AND  
REPAIRING SHALL BE BY THE GENERAL CONTRACTOR. COORDINATE REQUIREMENTS WITH THE GENERAL  
CONTRACTOR.
8.

REWORK EXISTING WATER, SANITARY AND VENT PIPING AS REQUIRED TO INSTALL NEW PLUMBING  
FIXTURES.
9.

WHERE EXISTING FIXTURES AND EQUIPMENT ARE REMOVED AND NOT REPLACED, CAP ALL PIPING WITHIN  
WALLS, FLOORS, OR CEILINGS AS REQUIRED FOR CONCEALMENT.
10.

REMOVE ALL EXPOSED PIPING (INCLUDING ATTIC), WHICH IS DEEMED INOPERABLE AS A RESULT OF THIS  
CONTRACT UNLESS SHOWN OR NOTED OTHERWISE.
11.

EXISTING PIPE, TO WHICH NEW PIPE IS CONNECTED, SHALL BE RODDED, FLUSHED AND CLEANED FROM  
POINT OF CONNECTION TO MAIN OUTSIDE BUILDING.
12.

ALL PLUMBING FIXTURES, VALVES, AND EQUIPMENT WHICH ARE REMOVED AND NOT RELOCATED, SHALL  
BECOME THE PROPERTY OF THE OWNER AND DELIVERED TO STORAGE ON SITE AS DIRECTED BY THE  
OWNER. ALL PIPING SHALL BECOME PROPERTY OF THE CONTRACTOR AND REMOVED FROM THE JOB  
SITE.
13.

EXISTING INFORMATION SHOWN WAS GATHERED FROM ORIGINAL CONTRACT DRAWINGS AND JOB SITE  
VISITS. EVERY ATTEMPT HAS BEEN MADE TO SHOW EXISTING SERVICES CORRECTLY; HOWEVER,  
CONTRACTOR SHALL BE RESPONSIBLE TO FIELD VERIFY ALL EXISTING CONDITIONS AND MAKE ALL  
NECESSARY ADJUSTMENTS IN THE FIELD AT NO EXTRA COST TO THE OWNER/ARCHITECT/ENGINEER.
14.

ALL FLOOR DRAINS SHALL BE PROVIDED WITH DEEP SEAL TYPE TRAP WITH NOT LESS THAN FOUR INCH  
(4") WATER SEAL.
15.

PROVIDE GAS COCK (FULL LINE SIZE), UNION, AND MINIMUM 6" LONG DIRT LEG AT FINAL CONNECTIONS  
TO GAS FIRED EQUIPMENT.

WATER HAMMER ARRESTOR SCHEDULE

P.D.I. UNITS	A	B	C	D	E	F
FIXTURE UNITS	1-11	12-32	33-60	61-113	114-154	155-330
CLASSIFICATIONS ESTABLISHED BY THE PLUMBING AND DRAINAGE INSTITUTE "STANDARD P.D.I.-WH201".						
APPROVED MANUFACTURERS: ZURN "SHOKTROL", WADE, J.R. SMITH						

SMITH ASSOCIATES

ARCHITECTS, P.A.

2701 Kavanaugh Blvd  
Suite 208  
Little Rock, AR 72205  
(501) 614-8822  
Fax (501) 614-8826  
www.smithassociatespa.com

PETTIT & PETTIT CONSULTING ENGINEERS INC

201 East Markham  
Suite 400  
Little Rock, AR 72201  
(501) 374-3731  
Fax (501) 374-1802

DEVELOPMENT CONSULTANTS INC

2200 Rodney Parham Rd  
Suite 220  
Little Rock, AR 72212  
(501) 221-7880

HILL COTTAGE RENOVATION PHASE II

ARKANSAS  
SCHOOL FOR THE BLIND  
/ VISUALLY IMPAIRED  
LITTLE ROCK, ARKANSAS

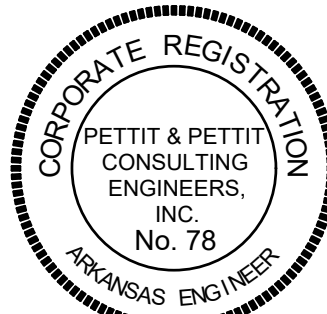
FLOOR PLAN - PLUMBING

PROJECT # 5102201

JANUARY 17, 2023

As-Builts  
2/26/2024  
CSUSA  
No Change

P1.0



© 2023  
PETTIT & PETTIT  
CONSULTING ENGINEERS, INC.



SMITH ASSOCIATES

ARCHITECTS, P.A.  
2701 Kavanaugh Blvd  
Suite 208  
Little Rock, AR  
72205  
(501) 614-8822  
Fax (501) 614-8826  
www.smithassociatespa.com

PETTIT & PETTIT CONSULTING ENGINEERS INC  
201 East Markham  
Suite 400  
Little Rock, AR  
72201  
(501) 374-3731  
Fax (501) 374-1802

DEVELOPMENT CONSULTANTS INC  
2200 Rodney Parham Rd  
Suite 220  
Little Rock, AR  
72212  
(501) 221-7880

HILL COTTAGE RENOVATION PHASE II

ARKANSAS SCHOOL FOR THE BLIND / VISUALLY IMPAIRED  
LITTLE ROCK, ARKANSAS

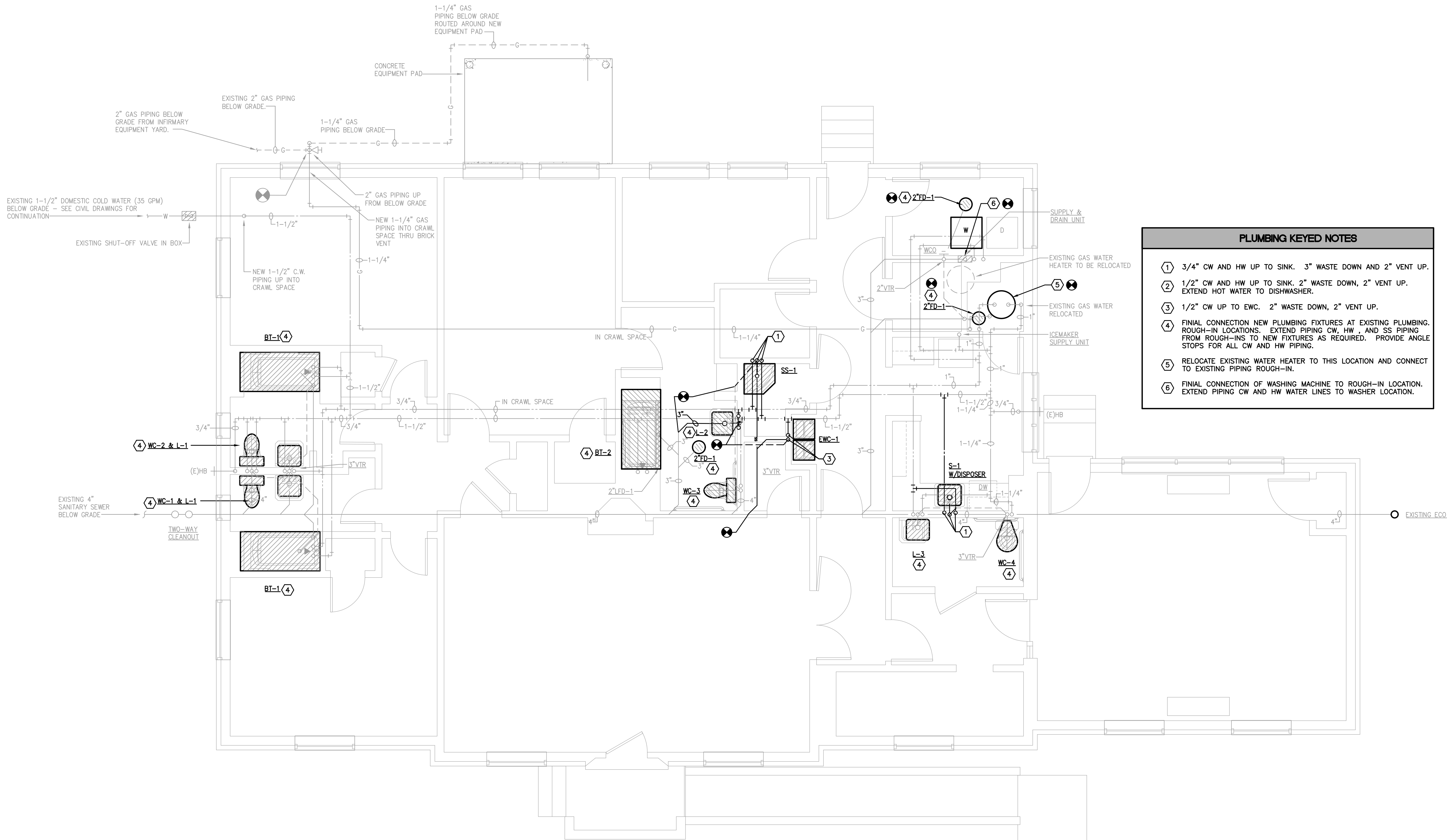
FLOOR PLAN - PLUMBING

PROJECT # 5102201

JANUARY 17, 2023

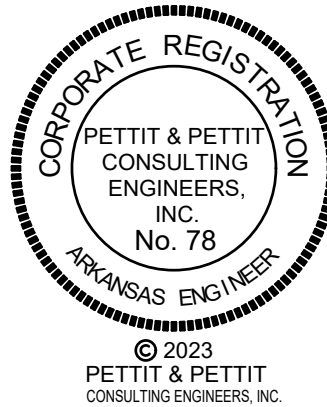
As-Builts  
2/26/2024  
CSUSA  
No Change

P1.1



- NOTES:
1. FOR DEMOLITION, REFER TO ARCHITECTURAL DEMOLITION DRAWINGS AND PLUMBING GENERAL NOTES.
  2. ALL SANITARY SEWER AND VENT PIPING SHALL BE 2" SIZE UNLESS NOTED OTHERWISE.
  3. ALL HOT AND COLD WATER PIPING SHALL BE 1/2" SIZE UNLESS NOTED OTHERWISE.

1 FLOOR PLAN - PLUMBING  
SCALE: 1/4" = 1'-0"







SMITH  
ASSOCIATES

ARCHITECTS, P.A.  
2701 Kavanaugh Blvd  
Suite 208  
Little Rock, AR  
72205  
(501) 614-8822  
Fax (501) 614-8826  
www.smithassociatespa.com

PETTIT & PETTIT  
CONSULTING  
ENGINEERS INC  
201 East Markham  
Suite 400  
Little Rock, AR  
72201  
(501) 374-3731  
Fax (501) 374-1802

DEVELOPMENT  
CONSULTANTS  
INC  
2200 Rodney Parham Rd  
Suite 220  
Little Rock, AR  
72212  
(501) 221-7880

HILL COTTAGE  
RENOVATION  
PHASE II

ARKANSAS  
SCHOOL FOR THE BLIND  
/ VISUALLY IMPAIRED  
LITTLE ROCK, ARKANSAS

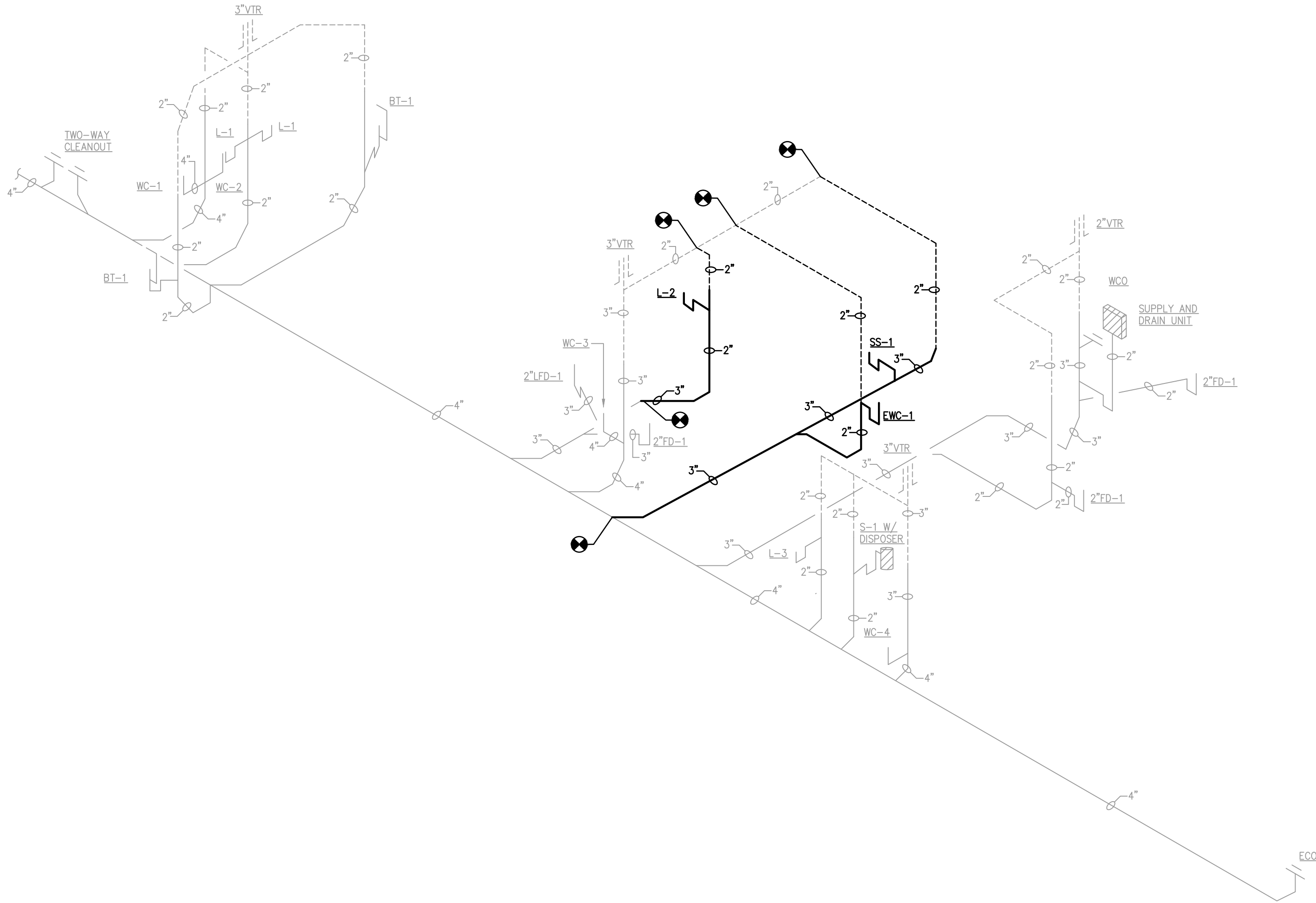
PLUMBING  
RISER

PROJECT # 5102201

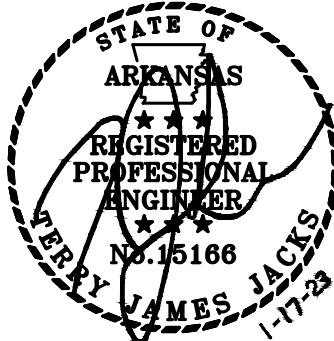
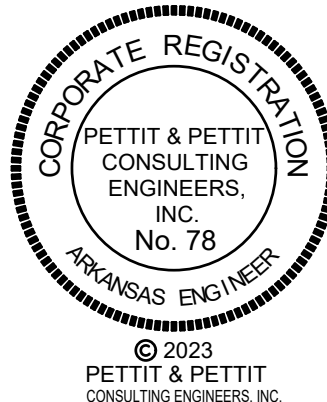
JANUARY 17, 2023

As-Builts  
2/26/2024  
CSUSA  
No Change

P3.1



1 PLUMBING RISER  
SCALE: NONE



© 2023  
PETTIT & PETTIT  
CONSULTING ENGINEERS, INC.