

Project

**CARTI CANCER CENTER-BRIDGE
PATIENT RESOURCE CENTER**

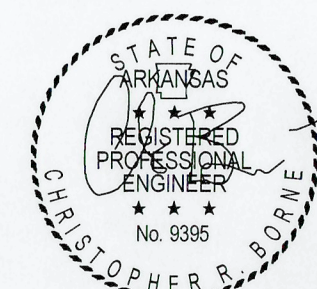
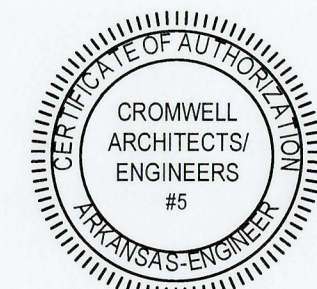
Design Phase

**CONSTRUCTION
DOCUMENTS**

Revisions

No.	Date	Description

Stamp



Notes

1. CROMWELL ARCHITECTS ENGINEERS, INC. ALL RIGHTS RESERVED.
2. THIS SHEET DESIGNED FOR COLOR PRINTING. CRITICAL INFORMATION MAY BE LOST WITH BLACK AND WHITE PRINTING.

Project Number

2020-171

Issue Date

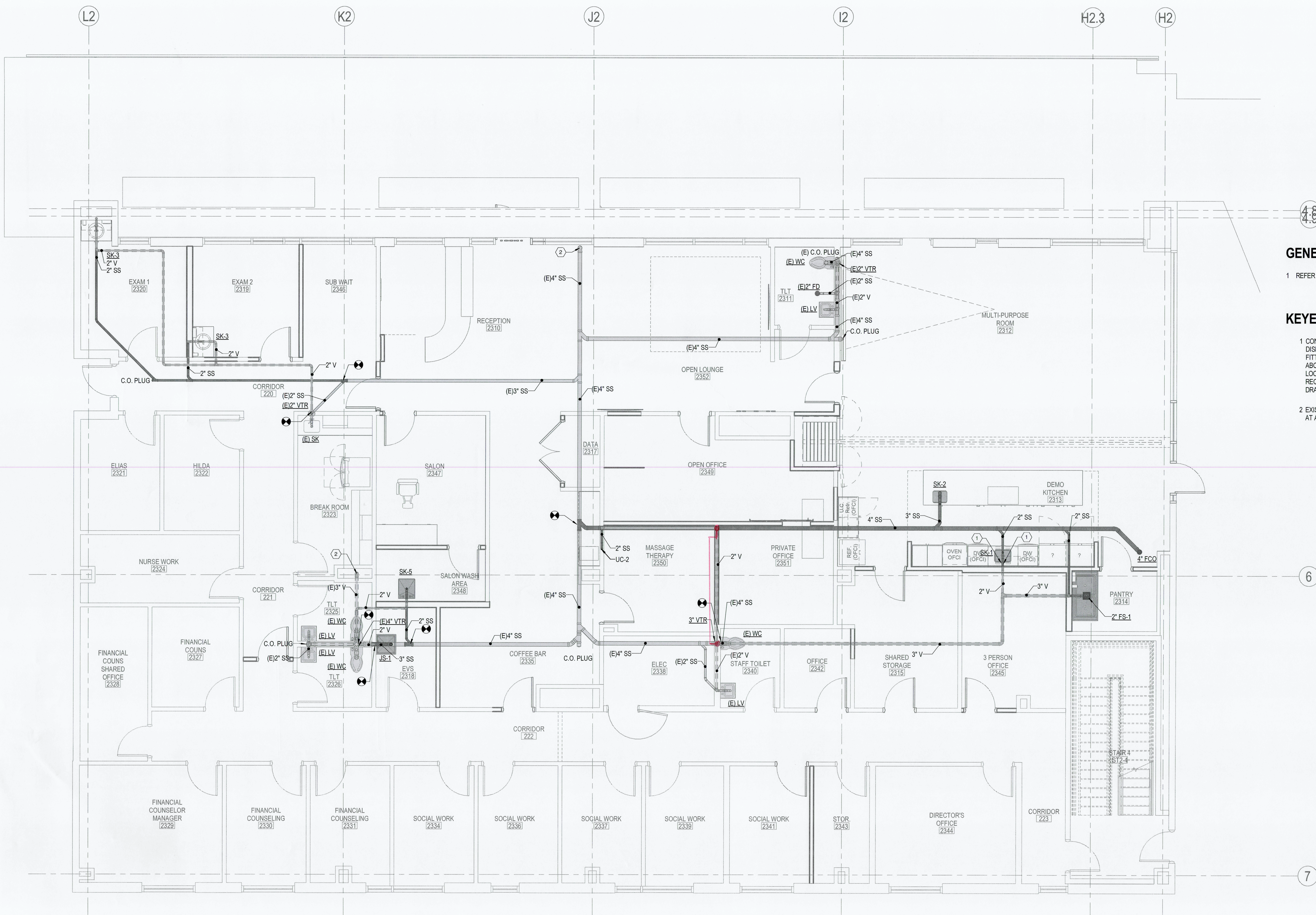
04-06-2023

Sheet Title

**SECOND FLOOR
SANITARY SEWER PLAN**

Sheet Number

P-102



4.8

GENERAL NOTES

- 1 REFER TO SHEET P-001 FOR LEGEND AND NOTES.

KEYED NOTES

- 1 CONNECT NEW 5/8" FLEXIBLE DRAIN LINE FROM DISHWASHER TO SINK TAILPIECE VIA AIR GAP FITTING AT APPROXIMATELY THIS LOCATION ABOVE SINK P-TRAP. COORDINATE FINAL LOCATION AND EQUIPMENT CONNECTION REQUIREMENTS WITH KITCHEN EQUIPMENT DRAWINGS PRIOR TO INSTALLATION.
- 2 EXISTING SS/V PIPING ROUTED BELOW FLOOR AT APPROXIMATELY THIS LOCATION.

6

7

1 SECOND FLOOR SANITARY SEWER PLAN
1/4" = 1'-0"



CS USA
As bui'ds
1-24-24