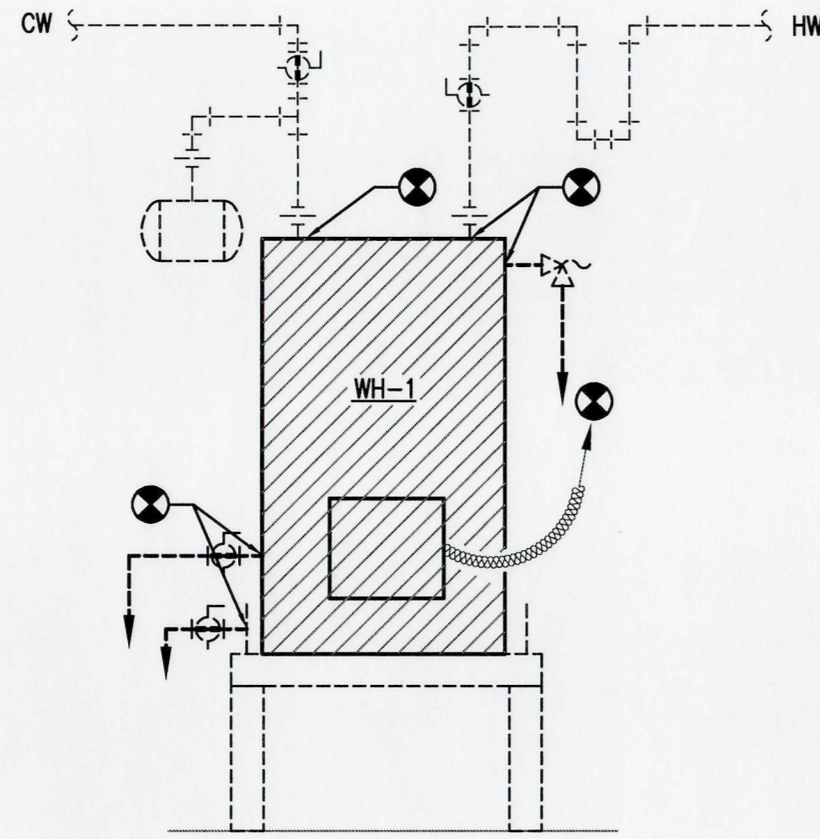
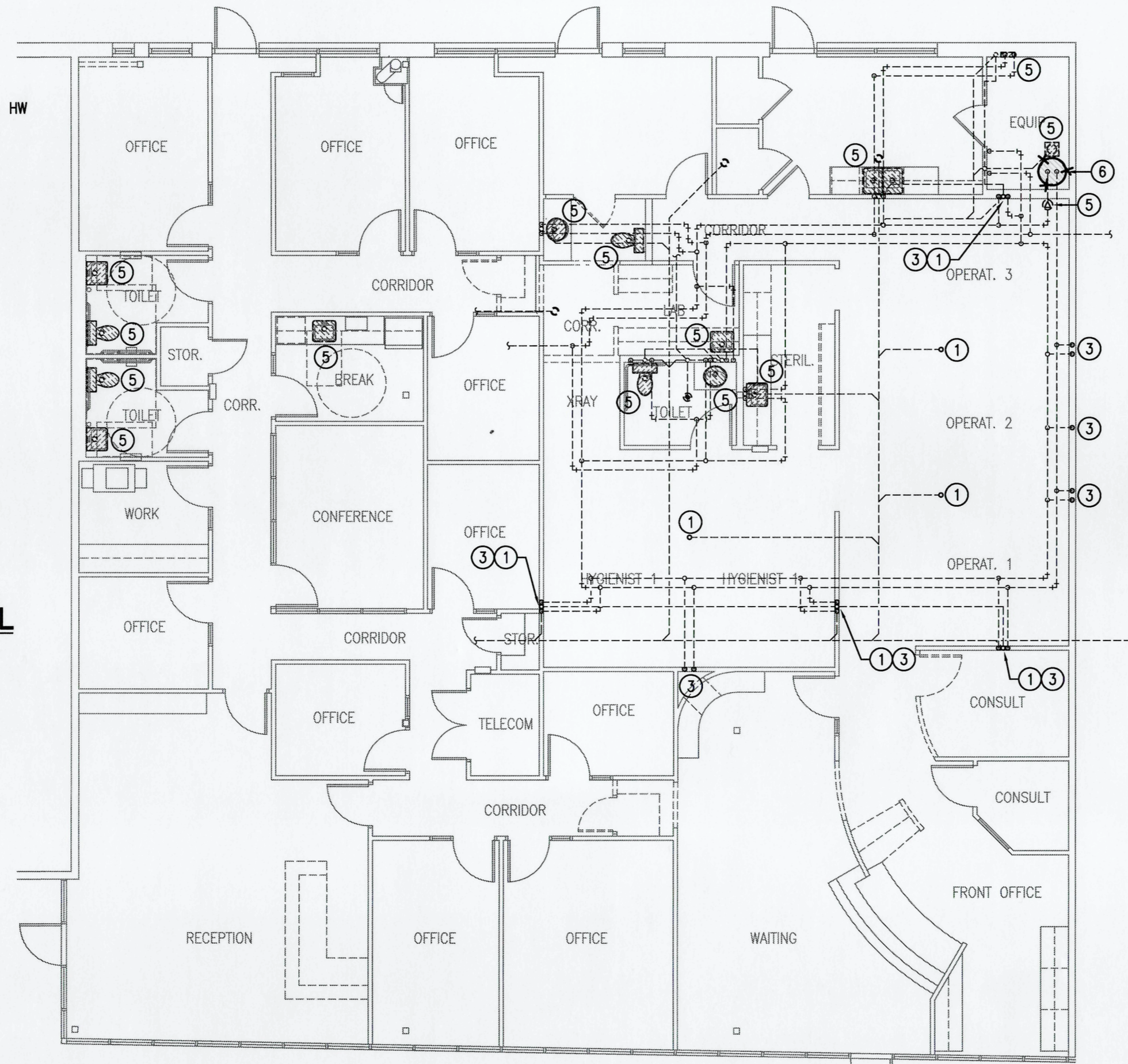


GENERAL NOTES

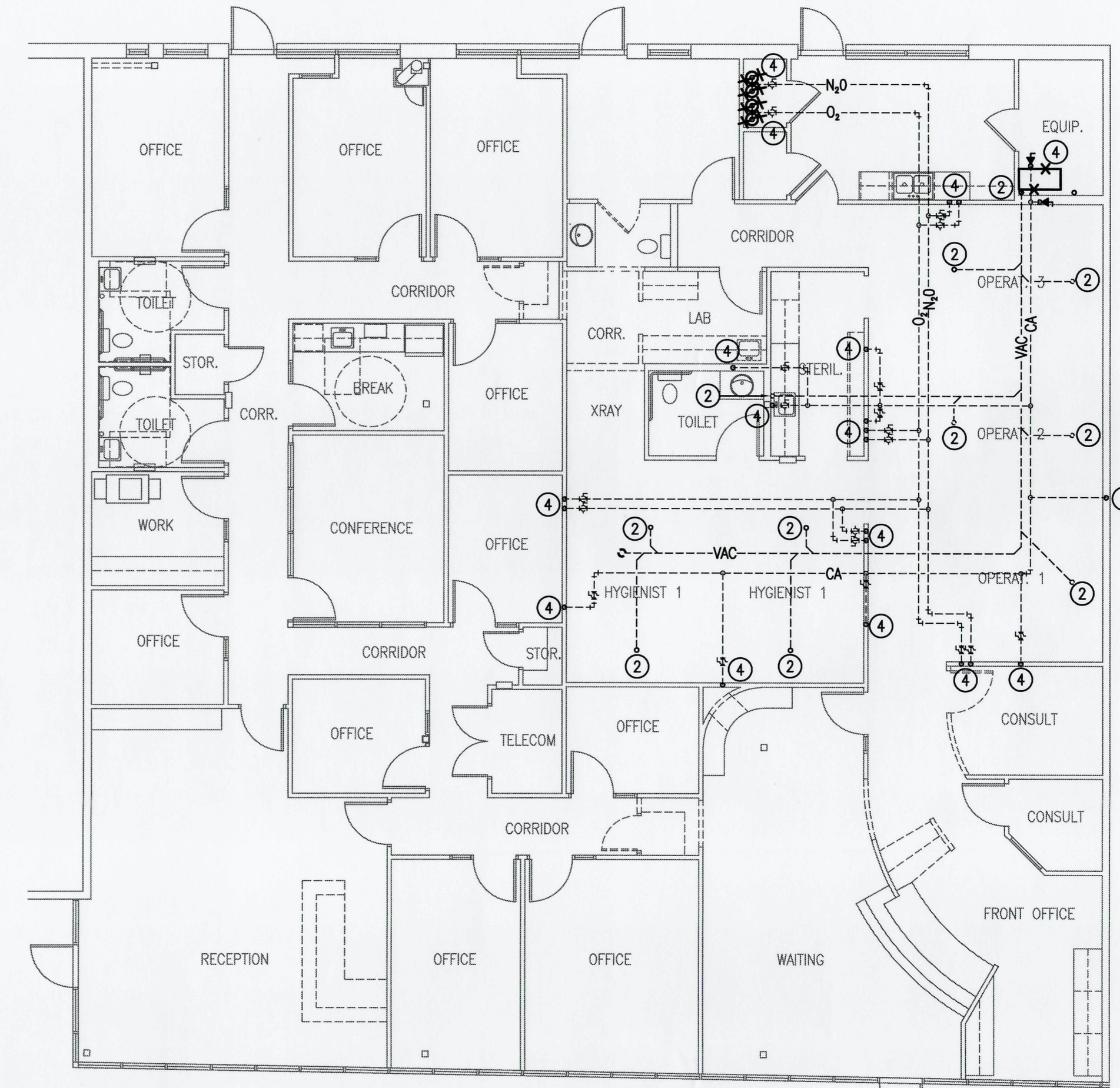
- A. ALL WORK MUST COMPLY WITH THE REQUIREMENTS OF LOCAL CODES, AMENDMENTS AND ORDINANCES. WHERE INSPECTIONS ARE REQUIRED BY AUTHORITIES HAVING JURISDICTION, WORK MUST NOT BE CONCEALED UNTIL INSPECTIONS AND TESTING ARE COMPLETED AND ACCEPTED.
- B. ALL CONTRACT DOCUMENTS ARE DIAGRAMMATIC AND INDICATE THE GENERAL ARRANGEMENTS OR GEOMETRICAL RELATIONSHIPS OF EQUIPMENT AND SERVICES. THEY ARE NOT INTENDED TO SPECIFY OR SHOW EVERY OFFSET, SEQUENCE, DEVICE, OPTION, FITTING, OR COMPONENT. DO NOT SCALE DRAWINGS.
- C. INFORMATION AND COMPONENTS SHOWN ON DIAGRAMS OR DETAILS, BUT NOT SHOWN ON PLANS, AND VICE VERSA, MUST BE PROVIDED AS IF EXPRESSLY REQUIRED BY BOTH.
- D. ALL SYSTEMS INSTALLATION MUST MAINTAIN INTEGRITY OF WALLS, PARTITIONS AND FLOORS DESIGNATED AS EITHER FIRE RATED OR "SMOKE TIGHT". SEAL AROUND ALL PENETRATIONS THROUGH RATED OR SMOKE TIGHT ASSEMBLIES. COORDINATE W/ARCHITECTURAL PLANS AND GC.
- E. REPLACE OR REPAIR ALL ARCHITECTURAL FEATURES REMOVED OR DAMAGED DURING THE COURSE OF THE WORK. REPAIR OR REPLACEMENT MUST, AS A MINIMUM, EQUAL ORIGINAL CONDITION. SPECIAL CARE MUST BE TAKEN ON THE ROOFS TO PREVENT DAMAGE. ANY DAMAGE MUST BE PROMPTLY REPAIRED AT NO EXPENSE TO THE OWNER. COMPLY WITH BONDING REQUIREMENTS OF THE ROOFING MANUFACTURER.
- F. SEAL ALL ROOF AND WALL PENETRATIONS WATERTIGHT. FLASH AND COUNTER-FLASH ALL ROOF PENETRATIONS. MINIMUM ACCEPTABLE HEIGHT OF FLASHING IS TWELVE (12) INCHES ABOVE ROOF.
- G. PROVIDE PRESSURE REDUCERS IN WATER SUPPLY LINES TO KEEP PRESSURE BELOW 60 PSI AT ALL OUTLETS. MINIMUM PRESSURE ACCEPTABLE AT WATER OUTLETS IS 25 PSI AT DIRECT SUPPLY FLUSH VALVES, AND 8 PSI AT ALL OTHER OUTLETS. PROVIDE PRESSURE REDUCING VALVE (REGULATOR) AT DOMESTIC WATER SERVICE ENTRANCE, AS REQUIRED.
- H. ALL PLUMBING WORK MUST BE INSTALLED HIGH AS POSSIBLE SO AS TO MAINTAIN THE MAXIMUM POSSIBLE CLEARANCE ABOVE FINISHED FLOOR.
- I. CONTRACTOR MUST VERIFY UTILITIES LOCATIONS AND INVERTS WITH EXISTING PRIOR TO PLACEMENT OF SERVICES. ALL SYSTEMS MUST BE INSTALLED AS PER SPECIFICATIONS AND GOVERNING CODES.
- J. WHEN PIPING FIVE (5) INCH DIAMETER AND OVER IS SUPPORTED FROM BAR JOISTS, EACH HANGER IS TO BE SUPPORTED BY AT LEAST TWO JOISTS BY MEANS OF SUPPLEMENTAL STEEL TO SPAN BETWEEN ADJACENT JOISTS. PIPING SIX (6) INCH DIAMETER AND OVER MUST ADDITIONALLY BE SUPPORTED FROM TOP CHORD OF STRUCTURE. KEEP PIPING THIS SIZE WITHIN 5' OF COLUMN LINES UNLESS OTHERWISE INDICATED.
- K. ALL PIPE DROPS FROM ABOVE TO BELOW FLOOR MUST BE MADE IN FURR-OUTS AT COLUMNS, IN WEB OF BEAMS AT COLUMNS, OR IN WALLS UNLESS SHOWN OTHERWISE.
- L. PROVIDE SHUT-OFF VALVES AT ALL BRANCH WATER LINES, AND AT ALL BRANCHES IN WATER LINES TO INDIVIDUAL FIXTURES, GROUPS OF FIXTURES OR HOSE BIB. PROVIDE VALVE ABOVE CEILING IN BRANCH SERVING EACH WALL HYDRANT (IF APPLICABLE). INSTALL VALVES IN ACCESSIBLE LOCATIONS.
- M. PROVIDE WATER HAMMER ARRESTORS (WHA) AT END OF CW LINE RUNS. PROVIDE ACCESS TO ARRESTORS VIA ACCESS PANELS, ETC.
- N. PROVIDE STOP VALVES AT EVERY FIXTURE ON BOTH HOT AND COLD WATER SUPPLY LINES. VALVES, ESCUTCHEONS, FITTINGS, ETC. MUST BE CHROMIUM PLATED. WHERE EXPOSED IN FINISHED AREAS, CHROME PLATED PIPE IS TO BE USED.
- O. PROVIDE CLEANOUTS IN ALL SANITARY, STORM DRAINAGE & OVERFLOW LINES, WHETHER SHOWN OR NOT, AT INTERVALS NOT TO EXCEED 50 FEET, AT EACH CHANGE IN DIRECTION OF 45 DEGREES AND GREATER, AND ON ALL VERTICAL RISERS AT A HEIGHT OF 30" ABOVE FINISHED FLOOR AT THE BASE OF EACH STACK.
- P. ALL EXPOSED OR ACCESSIBLE P-TRAPS MUST BE PROVIDED WITH BOTTOM CLEANOUT PLUGS.
- Q. MAINTAIN A MINIMUM OF 15'-0" BETWEEN ALL KNOWN FRESH AIR INTAKES AND PLUMBING VENTS FLUES, ETC. OFFSET PLUMBING VENTS BELOW ROOF AS REQUIRED TO MAINTAIN MINIMUM CLEARANCES. COORDINATE WITH ALL OTHER CONTRACTORS ON SITE.
- R. ALL SANITARY SEWER LINES 3" DIA AND LESS ARE TO BE RUN AT 1/4"/FT. MINIMUM. ALL OTHERS SLOPE AT 1/8"/FT. MINIMUM. UNLESS OTHERWISE INDICATED.
- S. INSULATE ALL WATER LINES ABOVE FLOOR. INSULATE ALL WATER LINES CARRYING HVAC CONDENSATE OR DRAINS FROM ICE MACHINES AND OTHER REFRIGERATION EQUIPMENT.
- T. PROVIDE 8 INCH WATER COLUMN MINIMUM GAS SYSTEM TO ALL GAS FIRED EQUIPMENT, UNLESS HIGHER PRESSURE IS REQUIRED BY EQUIPMENT (VERIFY WITH MANUFACTURER). MINIMUM REQUIREMENTS TO COMPLY WITH A.G.A. STANDARDS, HOWEVER, UNDER NO CIRCUMSTANCES ARE GAS LINES TO BE RUN INSIDE THE BUILDING WHICH CONTAIN GAS PRESSURES OF 5 PSI OR ABOVE.
- U. PROVIDE SHUT-OFF COCK, 6 INCH DIRT LEG, AND UNION IN GAS LINE AT ALL CONNECTIONS TO GAS BURNING EQUIPMENT, INCLUDING ROOF TOP EQUIPMENT, IF APPLICABLE. UNIONS MUST BE DIELECTRIC TYPE IF EQUIPMENT CONNECTION AND GAS PIPE ARE OF DIFFERENT METALS.
- V. PROVIDE ANODES ON GAS PIPING AS REQUIRED BY LOCAL UTILITY. PROVIDE ALL EQUIPMENT AT GAS METER AS REQUIRED BY LOCAL UTILITY.



4 ELECTRIC WATER HEATER DETAIL
SCALE: NONE



1 PLUMBING DEMOLITION PLAN
SCALE: 1/8" = 1'-0"



2 MED GAS PIPING DEMOLITION PLAN
SCALE: 1/8" = 1'-0"

KEYED NOTES:

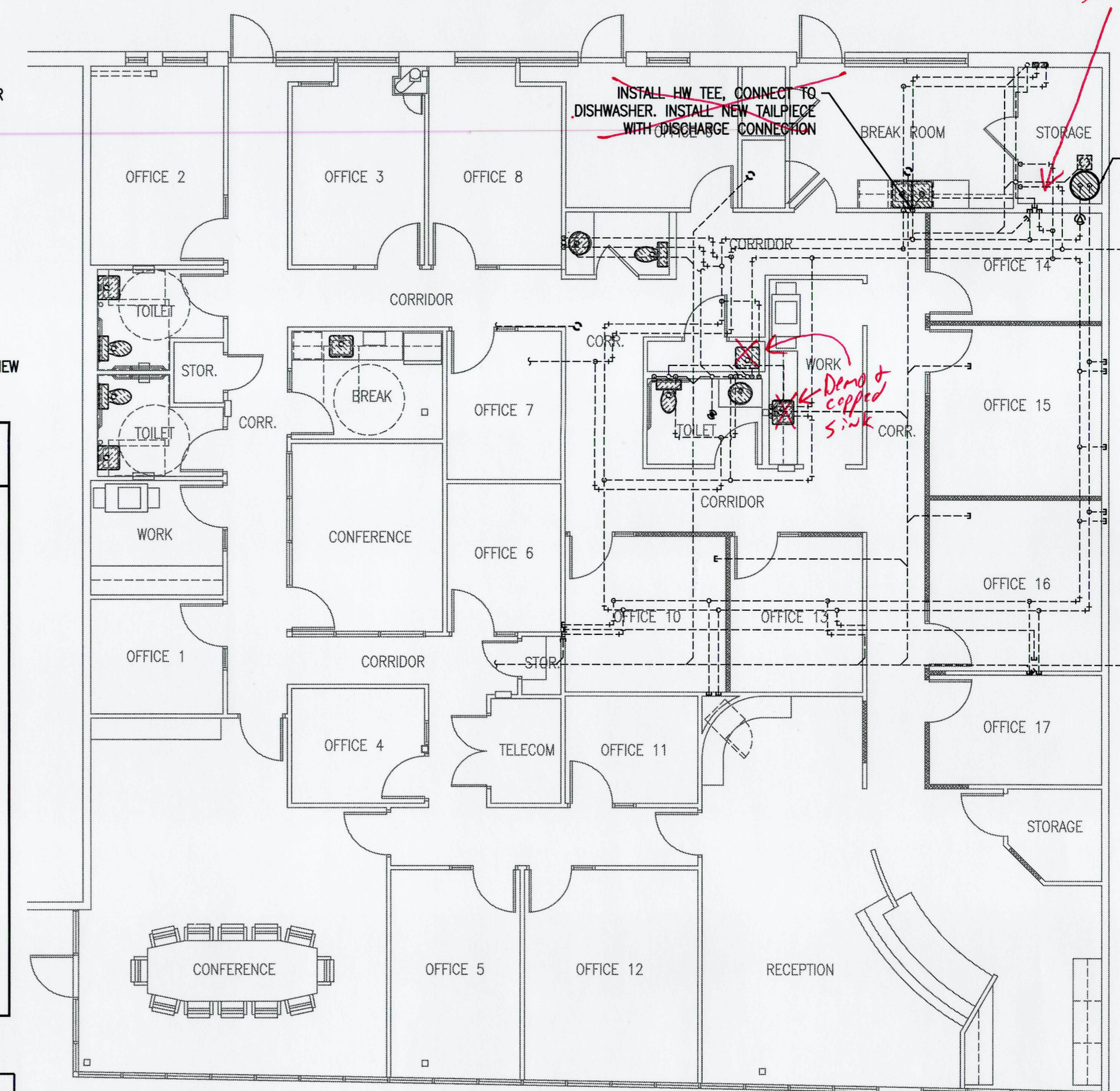
- ① DEMO PIPING FROM ANY EXISTING EQUIPMENT AND CAP SANITARY SEWER BELOW SLAB AND MAKE ALL REPAIRS TO SLAB / FLOORING.
- ② DEMO PIPING FROM ANY EXISTING EQUIPMENT AND CAP VACUUM BELOW SLAB AND ABANDON. MAKE ALL REPAIRS TO SLAB / FLOORING.
- ③ DEMO CW/HW PIPING FROM ANY EXISTING EQUIPMENT AND CAP PIPING ABOVE CEILING.
- ④ REMOVE MED GAS EQUIPMENT AND ASSOCIATED PIPING UP TO ABOVE CEILING AND CAP. ABANDON MED GAS PIPING SYSTEM. REPAIR ANY DAMAGE TO ARCHITECTURAL.
- ⑤ EXISTING PLUMBING FIXTURE / EQUIPMENT TO REMAIN.
- ⑥ REMOVE EXISTING WATER HEATER AND PREPARE FOR INSTALLATION OF NEW WATER HEATER. CONNECT BACK TO EXISTING CW/HW PIPING SERVICES.

PLUMBING LEGEND

	POINT OF CONNECTION - NEW TO EXISTING		ELBOW UP		REDUCED PRESSURE BACKFLOW PREVENTER
	EXISTING TO REMAIN		ELBOW DOWN		HAMMER ARRESTOR
	EXISTING TO BE REMOVED		TEE OUTLET UP		CAP ON END LINE
	DOMESTIC COLD WATER (CW)		TEE OUTLET DOWN		T&P RELIEF VALVE
	DOMESTIC HOT WATER (HW)		CONCENTRIC REDUCER		LINE CLEANOUT
	DOMESTIC HOT WATER RETURN (HWR)		UNION		DOUBLE CLEANOUT TO GRADE (DCOGT)
	SANITARY SEWER		STRAINER WITH BLOWDOWN VALVE		FLOOR CLEANOUT (FCO)
	SANITARY VENT		GATE VALVE		PRESSURE GAUGE WITH GAUGE COCK
	AW - ACID WASTE		GLOBE VALVE		THERMOMETER
	AV - ACID VENT		BALL VALVE		WATER METER
	SD - STORM DRAIN		GAS VALVE		GAS REGULATOR
	G - NATURAL GAS		OS&Y VALVE		FLOW SWITCH
	V - MEDICAL GAS - VACUUM		CHECK VALVE		PRESSURE SWITCH
	A - MEDICAL GAS - AIR		LEVER OPERATED BUTTERFLY VALVE		SIAMESE CONNECTION
	O - MEDICAL GAS - OXYGEN		GEAR OPERATED BUTTERFLY VALVE		
	NO - MEDICAL GAS - NITROGEN OXIDE		PRESSURE REDUCING VALVE		
	N - NITROGEN		BALANCING VALVE WITH DIFFERENTIAL PRESSURE TAPS		
	F - FIRE STANDPIPE / SPRINKLER PIPE				

PLUMBING FIXTURE ROUGH-IN SCHEDULE / SPECIFICATIONS

DESIGNATION	DESCRIPTION	SAN.	VENT	C.W.	H.W.	MOUNTING	REFERENCE PRODUCT	COMMENTS
WH-1	ELECTRIC WATER HEATER	---	---	3/4"	3/4"	FLOOR	A.O. SMITH MODEL DEL-20, 20 GALLON, (1) 4.0 KW ELECTRIC ELEMENT, 208 VOLT / 3Ø, 23 GPH RECOVERY AT 80°F RISE. ROUTE FULL SIZE T&P DISCHARGE TO JAN. SINK / DRAIN.	MOUNT SUSPENDED ON WALL MOUNTED SHELF W/ HEAVY DUTY BRACKETS. MOUNT AS HIGH AS POSSIBLE FOR CLEARANCE. PROVIDE CATCH PAN. ROUTE CATCH PAN DRAIN FULL SIZE (3/4" MINIMUM) TO JAN. SINK / DRAIN.



3 PLUMBING PLAN
SCALE: 1/8" = 1'-0"

SEAL:

REVISIONS:

DATE:
10-02-2023

PROJECT NUMBER:
203033

DRAWING NUMBER:

P1.1