

Quality People. Building Solutions.

Comfort Systems USA (Arkansas), Inc.
P.O. Box 16620
Little Rock, AR 72231
Phone 501-834-3320
Fax 501-834-5416

Date: 10/10/2023

Return Request: 10/16/2023

Project: ASU Mid-South RC & UC Chiller Replacement

Supplier: Control Heating & Cooling

Manufacturer: Greenheck

Submittal: Air Inlets & Outlets

Submittal Number: 23 37 00-01

Drawing # and Installation: Mechanical Drawings

ARCHITECT

Witsell Evans Rasco
901 W. Third Street
Little Rock, AR 72201
501-374-5300

ENGINEER

Pettit & Pettit
201 E. Markham St. #400
Little Rock, AR 72201
501-374-3731

GENERAL CONTRACTOR

Baldwin & Shell
3725 Champion Hills Driver, Suite 1300
Memphis, TN 38125
901-755-2952

MECHANICAL SUBCONTRACTOR

Comfort Systems USA (Arkansas), Inc.
9924 Landers Rd.
N. Little Rock, AR 72117
501-834-3320

Notes:

CSUSA PROJECT NO.

23-1024

jon@comfortar.com

Control Heating & Cooling, Inc
6000 Krueger Drive
Jonesboro, AR 72401
Phone: (870) 935-3693
Fax: (870) 935-4031

Submittal Transmittal

TO: Comfort Systems, Inc.
PO Box 16620
Little Rock, AR 72231

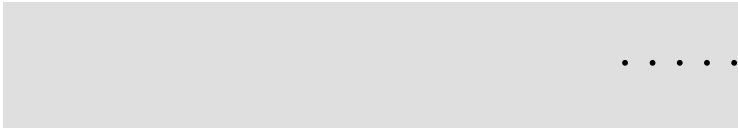
Date: 8/28/2023
Project: ASU Mid-South Chiller Replace
Submittal # FOUR
ATTN: Jon Davis
RE: Air Inlets and Outlets

We are sending you the following: Attached Under Separate Cover

Via: 1st Class Mail Overnight Facsimile Pick-Up/Hand Deliver

Copies	Spec No.	Description
1	23 3700	Air Outlets and Inlets: Greenheck

Remarks: _____



.....

SUBMITTAL

Job Name: ASU Mid-South Chiller Replacement

Architect: WER

Engineer: Pettit & Pettit

Contractor: Control Heating & Cooling

Elevation: (ft) 338

Date: 8/25/2023

Submitted By: Matt Miller

AIR COMPONENTS INC - 1977

5210 PLEASANT VIEW

STE 5

MEMPHIS, TN 38134

US

Phone: (901)382-1884

Fax: (901)382-7940

Email Address: mattm@aircompinc.com

SUBMITTAL NOTES:

Greenheck Air Distribution



P.O. Box 410 Schofield, WI 54476 (715) 359-6171 FAX (715) 355-2399 www.greenheck.com

Perforated Ceiling Diffusers

Model: XG-7600 Steel Perforated Face Ceiling Diffuser / Round Inlet / Hinged Face / Curve Blade Core / Supply

Dimensions

ID#	Tag	Qty	Model	Neck 1 (in.)	Neck 2 (in.)	Round Neck (in.)	Module (in.)	Nominal Face (in.)
8-1	CD	3	XG-7600	N/A	N/A	10	24x24	
8-2	CD	4	XG-7600	N/A	N/A	8	24x24	

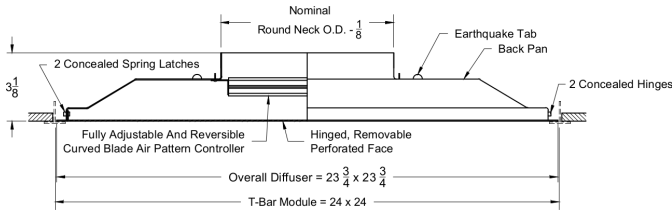
Note:

- Quantities and Sizes listed are for submittal purposes only, to be verified prior to order
- Submittal information is deemed correct at time of printing, however in the interest of product improvement Greenheck reserves the right to make changes without notice.

Perforated Diffusers

Model: XG-7600 Steel Perforated Face Ceiling Diffuser / Round Inlet / Hinged Face / Curve Blade Core / Supply

Model



Dimensions

ID#	Tag	Qty	Model	Neck 1 (in.)	Neck 2 (in.)	Round Neck (in.)	Module (in.)	Nominal Face (in.)
8-1	CD	3	XG-7600	N/A	N/A	10	24x24	
8-2	CD	4	XG-7600	N/A	N/A	8	24x24	

Construction

ID#	Border Type	Face Type	Finish Color	Air Pattern
8-1	T-Bar Lay-In	Aluminum Face	White	4 Way
8-2	T-Bar Lay-In	Aluminum Face	White	4 Way

Accessories

ID#	Damper	Grid	Earthquake Straps	Plaster Frame
8-1	Butterfly	None	No	None
8-2	Butterfly	None	No	None

Included

ID#	Tag	Qty	Round Neck (in.)
8-1	CD	3	10
8-2	CD	4	8

Perforated Ceiling Diffusers

Model: XG-7650R Steel Perforated Face Ceiling Diffuser / Square Inlet / Hinged Face / Return

Dimensions

ID#	Tag	Qty	Model	Neck 1 (in.)	Neck 2 (in.)	Round Neck (in.)	Module (in.)	Nominal Face (in.)
9-1	RA	2	XG-7650R	22	22	N/A	24x24	
9-2	RA	2	XG-7650R	8	8	N/A	24x24	

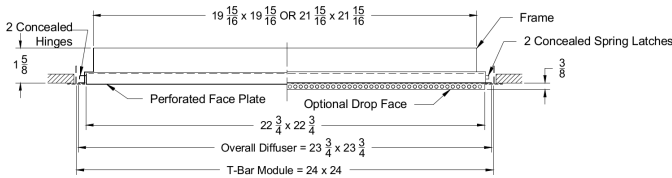
Note:

- Quantities and Sizes listed are for submittal purposes only, to be verified prior to order
- Submittal information is deemed correct at time of printing, however in the interest of product improvement Greenheck reserves the right to make changes without notice.

Perforated Diffusers

Model: XG-7650R Steel Perforated Face Ceiling Diffuser / Square Inlet / Hinged Face / Return

Model



Dimensions

ID#	Tag	Qty	Model	Neck 1 (in.)	Neck 2 (in.)	Round Neck (in.)	Module (in.)	Nominal Face (in.)
9-1	RA	2	XG-7650R	22	22	N/A	24x24	
9-2	RA	2	XG-7650R	8	8	N/A	24x24	

Construction

ID#	Border Type	Face Type	Finish Color	Air Pattern
9-1	T-Bar Lay-In	Aluminum Face	White	None
9-2	T-Bar Lay-In	Aluminum Face	White	None

Accessories

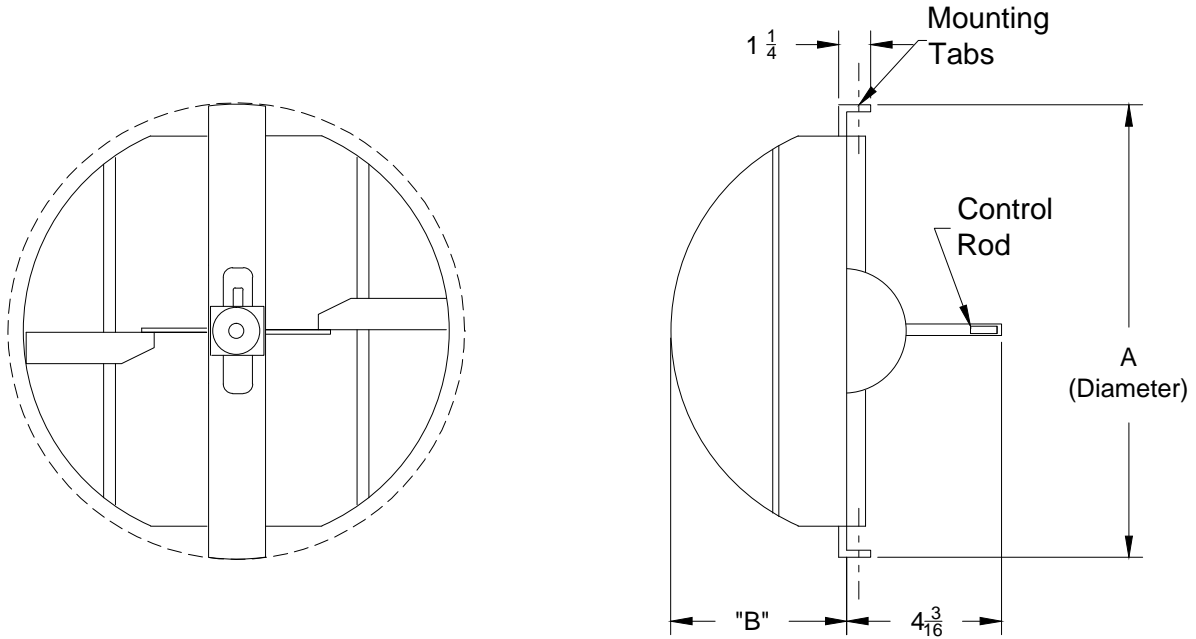
ID#	Damper	Grid	Earthquake Straps	Plaster Frame
9-1	None	None	No	None
9-2	None	None	No	None

Included

ID#	Tag	Qty	Round Neck (in.)
9-1	RA	2	N/A
9-2	RA	2	N/A

Accessories For Round Diffusers

Models: **XG-BDS** Butterfly Damper - Steel



Diffuser Neck Size	BDS Dimension	
	A	B
6	5 3/4	2 1/2
8	7 3/4	3 1/2
10	9 3/4	4 1/2
12	11 3/4	5 1/2
14	13 3/4	6 1/2
15	14 3/4	7
16	15 3/4	7 1/2

Notes: (check if provided)

1. Available Finishes	2. Construction Details
24 - MILL FINISH	<ul style="list-style-type: none"> • Available in sizes only as listed. • All are shipped unattached. • Galvanized Steel Construction.

SUBMITTAL

Job Name: ASU Mid-South Chiller Replacement

Architect: WER

Engineer: Pettit & Pettit

Contractor: Control Heating & Cooling

Elevation: (ft) 338

Date: 8/25/2023

Submitted By: Matt Miller

AIR COMPONENTS INC - 1977

5210 PLEASANT VIEW

STE 5

MEMPHIS, TN 38134

US

Phone: (901)382-1884

Fax: (901)382-7940

Email Address: mattm@aircompinc.com

SUBMITTAL NOTES:

Greenheck Intake Hoods

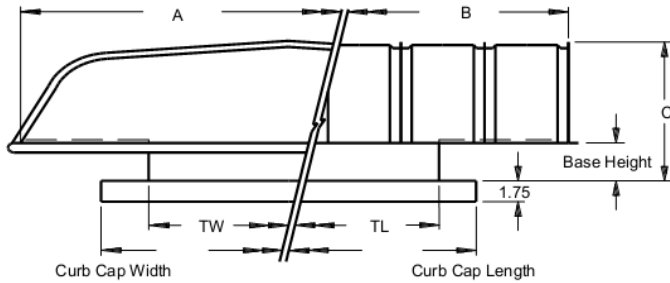


P.O. Box 410 Schofield, WI 54476 (715) 359-6171 FAX (715) 355-2399 www.greenheck.com

Model: FGI

Standard Construction Features:

-Precision formed locked rib construction. -Available in aluminum or galvanized steel construction. -.05 in. galvanized steel mesh birdscreens. -Heavy gauge galvanized steel support members. -Hood can be removed completely from the base or hinged open. -Units with a throat size exceeding 60 in. x 120 in. will have 12 in. galvanized bases as standard. -Recommended roof opening dimension is at least 2.5 in. larger than the damper size.



Dimensions

ID#	Tag	Qty	Model	Throat Width TW (in.)	Throat Length TL (in.)	Hood Width A (in.)	Hood Length B (in.)	Hood Height C (in.)	Curb Cap Width (in.)	Curb Cap Length (in.)	Weight (lb)	Ship Assembled
10-1	IV-1	1	FGI-26x26	26	26	42	48	19	32	32	102	Yes
10-2	IV-2	1	FGI-26x26	26	26	42	48	19	32	32	102	Yes

Construction

ID#	Installation Type	Insect Screen	Base Height (in.)	Birdscreen Material	Unit Material
10-1	Ducted	No	5	Galvanized	Galvanized
10-2	Ducted	No	5	Galvanized	Galvanized

Accessories

ID#	Supply Filters	High Wind Rated	Florida Product Approval #	Miami-Dade NOA#	Texas Department of Insurance Product Evaluation	Curb Seal	Hood Insulation (in.)	Tie Down Points
10-1	No	No	N/A	N/A	N/A	No	None	No
10-2	No	No	N/A	N/A	N/A	No	None	No

Roof Curbs

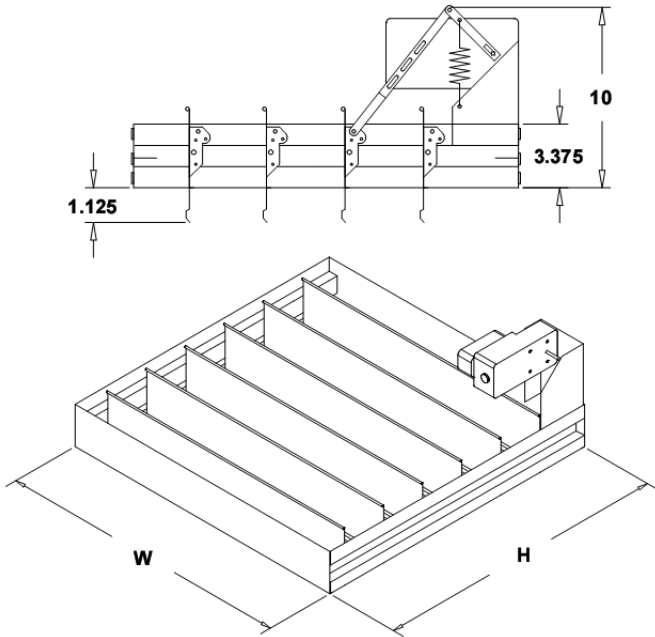
ID#	Model	Height (in.)	Width (in.)	Length (in.)
10-1	GPI	12	32	32
10-2	GPI	12	32	32

Dampers

ID#	Model	Width (in.)	Length (in.)	Blade Action	Frame Type	Actuator Type	Actuator Quantity	Actuator Mounting	End Switch	Damper Mounting
10-1	WD-200	26	26	Parallel	Channel	115 VAC	1	Internal	No	Ship Separate
10-2	WD-200	26	26	Parallel	Channel	115 VAC	1	Internal	No	Ship Separate

Standard Construction Features:

Horizontal Mount Intake Damper
Model: WD-200

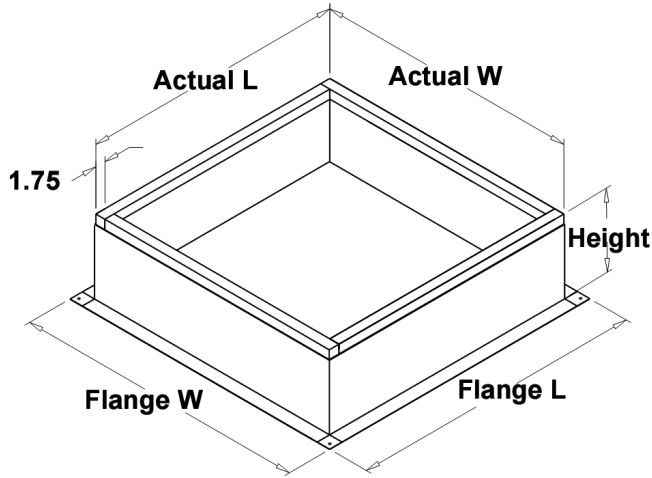


- Model WD-200 is an electrically motorized backdraft damper that opens when energized and spring returns closed when de-energized. It is designed for horizontal mounting to prevent undesirable reverse air flow when installed with roof mounted fans -- Galvanized frame with a flange on the motor side of damper - Steel axle material - Synthetic axle bearings - Maximum temperature of 180 F - Electric motor pack installed at the factory for all units with a tall base option and is shipped separately and requires installation in field for all units without a tall base option.

Damper Configuration:

ID #:	Tag:	Quantity:	W (in.):	H (in.):	Act Qty:
10-1	IV-1	1	26	26	1
10-2	IV-2	1	26	26	1

Notes: All dimensions shown are in units of in.
Width And height furnished approximately 0.125 in. undersize



Model: GPI

Roof Curb

Standard Construction Features:

- Roof Curb fits between the building roof and the fan mounted directly to the roof support structure - Constructed of either 18 ga galvanized steel or 0.064 in. aluminum - Straight Sided without a cant - 2 in. mounting flange - 3 lb density insulation - Height - Available from 12 in. to 42 in. as specified in 0.5 in. increments. Notes: - The maximum roof opening dimension should not be greater than the "Actual" top outside dimension minus 2 in.. - The minimum roof opening dimension should be at least 2.5 in. more than the damper dimension or recommended duct size. - The Roof Opening Dimension may or may not be the same as the Structural Opening Dimension. - Damper Tray is optional and must be specified. Tray size is same as damper size. - Security bars are optional and must be specified. Frames and gridwork are all 12 ga steel. Gridwork is welded to the frame and the frame is welded to the curb.

General

ID#	Tag	Qty	Model	Sizing Method	Undersizing (in.)	Weight (lb)	Shipped Assembled	Union Made
10-1		1	GPI-32-G12	Nominal	1.5	32	Yes	No Preference
10-2		1	GPI-32-G12	Nominal	1.5	32	Yes	No Preference

Dimensions

ID#	Curb Height (in.)	Nominal Outside Width (in.)	Nominal Outside Length (in.)	Actual Outside Width (in.)	Actual Outside Length (in.)
10-1	12	32	32	30.5	30.5
10-2	12	32	32	30.5	30.5

Damper Tray

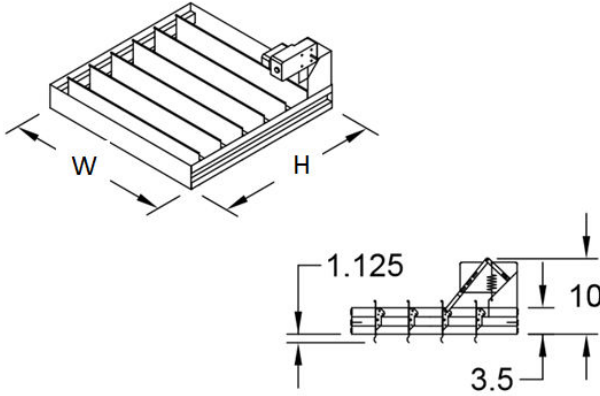
ID#	Tray Use	Damper Tray Width (in.)	Damper Tray Length (in.)
10-1	GFC Fans	26	26
10-2	GFC Fans	26	26

Accessories

ID#	Material	Security Bars	Liner	Insulation (in.)	Insulation R Value
10-1	Galvanized	No	No	1	R4.3
10-2	Galvanized	No	No	1	R4.3

Horizontal Mount Intake Damper

Model: WD-200



Standard Construction Features:

- Model WD-200 is an electrically motorized backdraft damper that opens when energized and spring returns closed when de-energized. It is designed for horizontal mounting to prevent undesirable reverse air flow when installed with roof mounted fans -- Galvanized frame with a flange on the motor side of damper - Steel axle material - Synthetic axle bearings - Maximum temperature of 180 F - Electric motor pack installed at the factory for all units with a tall base option and is shipped separately and requires installation in field for all units without a tall base option.

Damper Configuration:

ID #:	Tag:	Quantity:	W (in.):	H (in.):	Act Qty:	Actuator Model:
30	IV-1 & 2	1	26	26		

Notes: All dimensions shown are in units of in.
Width And height furnished approximately 0.125 in. undersize