

1. ALL PLUMBING MATERIALS AND INSTALLATION SHALL COMPLY WITH THE ARKANSAS STATE PLUMBING CODE, LATEST EDITION.
2. INSTALL ALL DOMESTIC HOT AND COLD WATER PIPING AS PER STATE AND LOCAL CODES.
3. INSULATE ABOVE GRADE CONCEALED DOMESTIC HOT AND COLD WATER PIPING PER SPECIFICATIONS, SECTION 22 01 19.
4. PROVIDE MAIN DOMESTIC COLD WATER LINE BUILDING SHUT OFF VALVE AT ENTRY INTO THE BUILDING. INSTALL IN FREEZE PROOF VAULT WITH ACCESS COVER.
5. INSTALL DEEP SEAL SLABS AT ALL DRAIN CONNECTIONS.
6. COORDINATE UNDER SLAB PIPING WITH COLUMNS AND FOOTINGS. REFER TO STRUCTURAL DRAWINGS.
7. MINIMUM DEPTH OF COVER FOR WATER LINES IS 30 IN.
8. BURY ALL FIBER OPTIC TRACER WIRE IN TRENCH WITH AND UNDER GROUND PLASTIC SERVICES, LEAVE ENDS EXPOSED FOR FUTURE LOCATION.
9. PROVIDE AND INSTALL 6 IN. DIRT LEG AND GAS STOP (BALL VALVE W/ BALL) AT ALL EQUIPMENT GAS CONNECTIONS.
10. PROVIDE GAS MAIN BUILDING SHUT OFF VALVE NEAR ENTRY TO THE BUILDING.
11. ALL GAS PIPING SYSTEMS WITHIN A BUILDING AND OTHER ABOVE GROUND GAS PIPING SHALL BE ELECTRICALLY CONTINUOUS AND BONDED TO A GROUNDED ELECTRODE AS DEFINED IN N.F.P.A. 70.
12. VERIFY LOCATION AND SIZE OF EXISTING SITE UTILITIES WITH UTILITY AUTHORITIES PRIOR TO CONSTRUCTION.
13. ALL IMPROVEMENTS (PAVEMENTS, CURB AND GUTTER, SOD, ETC.) SHALL BE REPLACED BY GENERAL CONTRACTOR TO PRECONSTRUCTION CONDITION.
14. WHERE FIRE RATED PARTITIONS OR FLOORS OCCUR, ALL FLOOR TO FLOOR AND ROOM TO ROOM PENETRATIONS SHALL BE PROPERLY FIRE SEALED WITH U.L. LISTED AND CLASSIFIED FIRE CAULK OR FIRE SEALED BY USING AN APPROVED FIRE SEAL SLEEVE METHOD WHICH MEETS U.L. REQUIREMENTS. ALL OTHER PENETRATIONS OF RATED CHASES OR WALLS SHALL BE PROPERLY FIRE SEALED AND WHERE EXTENDING THROUGH SUCH RATED CHASES OR WALLS, FIRE STOP PENETRATION, ALL OTHER FIRE STOPPING, FIRE CAULKING AND FIRE SLEEVING OR OTHER FIRE SEALING SHALL BE ACCEPTABLE BY THE LOCAL AUTHORITIES AND SHALL BEAR THE U.L. SEAL.
15. INSTALL DOMESTIC WATER AND GAS LINES TIGHT AGAINST BUILDING ROOF STRUCTURE.
16. VERIFY LOCATION, INVERT AND SIZE OF ALL EXISTING UTILITIES PRIOR TO BEGINNING CONSTRUCTION.
17. ALL PIPING TO REDUCE PRESSURE BACKFLOW PREVENTERS ON ALL DOMESTIC SERVICE LINES CONNECTED TO ALL DEVICES, APPLIANCES AND APPARATUS INTENDED TO SERVE SOME SPECIAL FUNCTION, SUCH AS STERILIZATION, DISTILLATION, PROCESSING, COOLING OR STORAGE OF FOODS OR ICE, WATER PUMPS, FILTERS, SOFTENERS, TANKS AND ALL OTHER APPLIANCES AND DEVICES THAT HANDLE OR TREAT POTABLE WATER, SHALL BE PROTECTED AGAINST CONTAMINATION FROM BACKFLOW.
18. CONDENSATE PIPING FROM ROOF TOP AIR CONDITIONERS SHALL BE SCHEDULE 40 P.V.C. PROVIDE CONDENSATE TRAP. ROUTE CONDENSATE LINE TO NEAREST ROOF DRAIN OR GUTTER.
19. PROVIDE WEATHERPROOF PIPE BOOT WITH ULTRAPLY TO MEMBRANE AS FLASHING AND STAINLESS STEEL CLAMPING RING FOR ALL GAS LINES PENETRATING THE ROOF.
20. ALL INSTALLATIONS SHALL CONFORM TO THE LATEST ACCEPTABLE ARKANSAS STATE MECHANICAL CODE.
21. ALL WATER AND SEWER LINE MATERIALS AND INSTALLATION METHODS SHALL BE IN ACCORDANCE WITH THE CITY OF RUSSELLVILLE STANDARD SPECIFICATIONS FOR PUBLIC WORK CONSTRUCTION AS WELL AS THE ARKANSAS STATE PLUMBING CODE.
22. HORIZONTAL BRANCHES SHALL CONFORM TO HORIZONTAL STACK OR SIZE AND TO THE BASE OF STACKS AT A POINT LOCATED NOT LESS THAN 10 FEET DIAMETER DOWNSTREAM FROM THE STACK.
23. CONTRACTOR SHALL PROVIDE "AS BUILT" DRAWINGS OF ALL PLUMBING AND PIPING SYSTEMS UPON COMPLETION OF THE PROJECT.
24. THE CONTRACTOR SHALL FAMILIARIZE HIMSELF WITH THE DRAWINGS, THE BUILDING SITE, AND OTHER INFORMATION PRESENTED FOR THE CONSTRUCTION OF THIS PROJECT. IF CONTRACTOR HAS QUESTIONS REGARDING ASSEMBLIES OR DETAILS WITHIN THE PROJECT HE SHALL IMMEDIATELY NOTIFY TO THE ENGINEER IN WRITING PRIOR TO BIDDING THE PROJECT. CLAIMS MADE SUBSEQUENT TO THE BID WILL NOT BE ACCEPTED IF IT IS DETERMINED THAT PROPER FAMILIARIZATION COULD HAVE AVOIDED SUCH CLAIM.
25. MECHANICAL CONTRACTOR SHALL COORDINATE INSTALLATION PLUMBING SITE UTILITIES WITH SITE WORK OF OTHER TRADES. IN INSTANCES WHERE COORDINATION REQUIRES DEVIATION FROM PLANS MECHANICAL CONTRACTOR SHALL NOTIFY ENGINEER OF PROPOSED CHANGES.
26. COMPLY WITH STATE OF ARKANSAS ADOPTED ADA ACCESSIBLE GUIDELINES IN REGARD TO ACCESSIBLE FEATURES.
27. PROVIDE DRIP PAN FOR ENTIRE LENGTH OF PIPE WHERE PIPE MUST BE INSTALLED ABOVE ELECTRICAL EQUIPMENT.
28. DO NOT ROUTE GROUPS OF CONDUIT, PIPES, AND SLEEVES ABOVE FLOOR FOOTINGS UNLESS IT IS REQUIRED TO DO SO. IF CONFLICT OCCURS, CONSULT ARCHITECT/ENGINEER.
29. LIMIT WIDTH OF CONDUIT, PIPES AND SLEEVES NOT TO EXCEED 3 FEET IN WIDTH AS IT PASSES UNDER WALL FOOTING. AS MUCH AS POSSIBLE, ALIGN THE ITEMS PERPENDICULAR TO THE FOOTING AS IT PASSES BELOW FOOTING.
30. PROVIDE A MINIMUM SPACING OF 3 FEET BETWEEN CONDUIT OR PIPE GROUPS AS ITEMS PASS UNDER FOOTINGS.
31. DO NOT ROUTE CONDUITS, PIPE OR SLEEVES UNDER COLUMN FOOTINGS OR PAD FOOTINGS.
32. MECHANICAL CONTRACTOR MUST REVIEW ALL ARCHITECTURAL DRAWINGS FOR EXACT LOCATION OF PLUMBING FIXTURES, ROOF, OVERFLOW AND FLOOR DRAINS. IF PLUMBING FIXTURES OR DRAINS ARE SHOWN ON THE ARCHITECTURAL DRAWINGS THEY MUST BE INCLUDED IN THE CONTRACT EVEN IF NOT SHOWN ON THE MECHANICAL DRAWINGS.
33. WHERE THE BUILDING SERVICE IS INSTALLED WITHIN 10 FEET OF THE WATER SERVICE THE WATER SERVICE PIPE SHALL BE A MINIMUM OF 12 INCHES ABOVE THE TOP OF THE HIGHEST POINT OF THE SEWER. REQUIRED SEPARATION DISTANCE SHALL NOT APPLY WHERE A WATER SERVICE PIPE CROSSES A SEWER PIPE IS SLEEVED 10 FEET HORIZONTALLY FROM THE SEWER PIPE CENTERLINE ON BOTH SIDES OF SUCH PIPE CROSSINGS.
34. DO NOT SCALE DIRECTLY FROM THE PLANS OR DRAWINGS. REFER TO MECHANICAL DRAWINGS FOR ALL MECHANICAL INFORMATION.
35. ALL PLUMBING SANITARY WASTE AND VENT PIPING INSTALLED IN FIRE RATED WALLS OR PLENUM RETURN AIR SYSTEMS SHALL BE CAST IRON. REFER TO ARCHITECTURAL PLANS FOR FIRE SAFETY INFORMATION.

- ① INSTALL AN APPROVED TRAP GUARD PRODUCT THAT CONFORMS TO NSF-14, CSA B602-99 and CSA B141-94.
- ② COORDINATE UNDERSLAB PIPING WITH STRUCTURAL FOOTINGS. REFER TO STRUCTURAL PLANS FOR LOCATIONS AND SIZES OF FOOTINGS.
- ③ PROVIDE AND INSTALL 6 INCH DIRT LEG AND GAS STOP (BALL VALVE ONLY) AT ALL EXHAUST GAS CONNECTIONS. REFER TO DETAIL 1/P3.1.
- ④ MECHANICAL CONTRACTOR SHALL NOT INSTALL ANY WATER LINES ABOVE ELECTRICAL PANELS. PANELS. REFER TO ELECTRICAL PLANS FOR PANEL LOCATIONS.
- ⑤ IDENTIFY OUTDOOR UNDERGROUND LINES WITH CONTINUOUS STRIP OF PLASTIC UTILITY MARKER. TAPE SHOULD STATE AT REGULAR INTERVALS: "CAUTION (STATE UTILITY) PIPE BELOW". INSTALL TAPE ONE FOOT DIRECTLY ABOVE PIPE BEFORE BACKFILLING TO GRADE.
- ⑥ MECHANICAL CONTRACTOR TO PROVIDE REDUCED PRESSURE BACKFLOW PREVENTER (RPZ) AND PRESSURE REDUCING VALVE (IF REQUIRED) AT THE DOMESTIC WATER SERVICE ENTRANCE IN BUILDING. THERE SHALL BE NO WYES OR TEES PRIOR TO THE RPZ. PROVIDE MATTS MODEL LF909 OR APPROVED EQUAL RPZ. REFER TO 3/P3.2 FOR DETAIL.
- ⑦ VENT PIPING SHOWN IN THIS LOCATION FOR CLARITY. VENT PIPING SHALL NOT BE ROUTED EXPOSED IN THE KITCHEN SPACE. FIELD VERIFY AS REQUIRED DURING INSTALLATION.
- ⑧ ROUTE 1/2" COLD WATER AND 1/2" HOT WATER PIPING DOWN IN WALL TO BELOW SLAB AS INDICATED.
- ⑨ MAINTAIN A MINIMUM OF 10 FT. CLEARANCE BETWEEN ALL EXHAUST OUTLETS, FLUES, PLUMBING VENTS AND ANY FRESH AIR INTAKE. IF 10 FT. CLEARANCE CAN NOT BE MAINTAINED EXHAUST OUTLET, FLUE, OR VENT MUST TERMINATE AT A POINT AT LEAST 36 IN. ABOVE HIGHEST FRESH AIR INTAKE WITHIN 1 FT. LIMIT.
- ⑩ MECHANICAL CONTRACTOR SHALL INSTALL ALL EQUIPMENT, FANS AND APPLIANCES A MINIMUM OF 10 FEET FROM A ROOF EDGE OR OPEN SIDE WHERE SUCH EDGE OR OPEN SIDE IS GREATER THAN 36 IN. ABOVE THE ELEVATED SURFACE. THE GUARD SHALL BE CONSTRUCTED SO AS TO PREVENT THE PASSAGE OF A 21 INCH DIAMETER SPHERE AND COMPLY WITH THE LOADING REQUIREMENTS FOR GUARDS SPECIFIED IN THE LATEST ACCEPTED INTERNATIONAL BUILDING CODE.
- ⑪ PROVIDE GREENHECK MODEL GRSI-10 FOR COMBUSTION INTAKE ROOF CAP. RE:6/M3.2 FOR DETAIL.
- ⑫ 1-1/4" GAS UP. RE:1/MP2.1A FOR CONTINUATION.
- ⑬ PAINT ALL EXTERIOR EXPOSED GAS PIPING TO MATCH BUILDING. PAINT COLOR TO BE SELECTED BY ARCHITECT.
- ⑭ GAS SOLENOID VALVE FOR CONNECTION TO GUARDIAN RANGE HOOD SUPPRESSION SYSTEM. COORDINATE WITH MANUFACTURER OR INSTALLER AS REQUIRED.
- ⑮ 1-1/4" GAS UP. RE:1/MP2.1A FOR CONTINUATION.
- ⑯ RE:3/P3.3 FOR PIPE ROOF PENETRATION DETAIL.

	SANITARY WASTE PIPING
	VENT PIPING
	COLD WATER PIPING
	HOT WATER PIPING
	HOT WATER RETURN PIPING
	MEDIUM PRESSURE GAS PIPING (5 PSIG)
	LOW PRESSURE GAS PIPING (11 IN. W.C.)
	CONDENSATE DRAIN PIPING
	ROOF DRAIN PIPING
	OVER FLOW DRAIN PIPING
	BALL VALVE
	CHECK VALVE
	GAS REGULATOR EQUAL TO EQUI-METER MODEL 243, INLET PRESSURE @ 5 PSI, SET OUTLET PRESSURE @ 11 IN. W.C.
	GAS VALVE (BALL VALVE ONLY)
	CONNECTION POINT
	WATER HAMMER ARRESTOR (SIZE PER MANUFACTURER'S RECOMMENDED FIXTURE UNIT CAPACITY)
	REFER TO KEYED NOTES
	PLUMBING FIXTURE NUMBER (REFER TO PLUMBING FIXTURE SCHEDULE)
COTG	CLEAN OUT TO GRADE
FD	FLOOR DRAIN
FS	FLOOR SINK
FPFB	FREEZE PROOF HOSE BIB
HB	HOSE BIB
ADA	ACCESSIBLE
HD	HUB DRAIN
WCO	WALL CLEAN OUT
WH	WATER HEATER
SS	SANITARY SEWER
RD	ROOF DRAIN



HSA JOB # 22-166



Hight Jackson
ASSOCIATES
5201 W Village Parkway, Suite 300 | Rogers, Arkansas 72758 | (479) 464-4965 | www.hjarch.com

As-Built
CSUSA
8/8/2024
MA

A NEW OFFICE FOR
FARM CREDIT
RUSSELLVILLE ARKANSAS

DRAWN BY:
AH

CHECK BY:
NEW

ISSUE DATE
01/25/2023

PROJECT NO.
2223

REVISION DATES
2/20/2023

PLUMBING NOTES & LEGEND

S H E E T

P1.1

COPYRIGHT 2023
THESE DRAWINGS AND SPECIFICATIONS ARE
THE EXCLUSIVE PROPERTY OF
HIGHT JACSON ASSOCIATES, P.A.
USE OR REPRODUCTION IS PROHIBITED
WITHOUT WRITTEN CONSENT

1 FIRST FLOOR - PLUMBING OVERALL
3/32" = 1'-0"

NOTES:
RE:P1.1 FOR PLUMBING LEGEND, GENERAL AND
KEYED NOTES. RE:P3.1 FOR PLUMBING DETAILS.
RE:P5.1 FOR PLUMBING SCHEDULES.

HSA

HSAEngineering

479 / 452 / 8922 office

7405 Ellis St.

Fort Smith, AR 72916

HSAConsultants.com

HSA JOB # 22-166

PLUMBING PLAN -
OVERALL

S H E E T

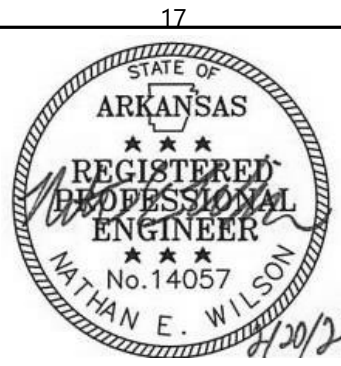
P2.1

COPYRIGHT 2023
THESE DRAWINGS AND SPECIFICATIONS ARE
THE EXCLUSIVE PROPERTY OF
HIGHT JACKSON ASSOCIATES P.A.
USE OR REPRODUCTION IS PROHIBITED
WITHOUT WRITTEN CONSENT.

A NEW OFFICE FOR
FARM CREDIT
RUSSELLVILLE, ARKANSAS

As-Builts
CSUSA
8/8/2024
MA

Hight Jackson
ASSOCIATES
5201 W Village Parkway, Suite 3001 Rogers, Arkansas 72768 | (479) 464-4965 | www.hjarch.com





Hight Jackson
ASSOCIATES

5201 W Village Parkway, Suite 300 | Rogers, Arkansas 72768 | (479) 464-4965 | www.hjarch.com

As-Built
CSUSA
8/8/2024
MA

A NEW OFFICE FOR
FARM CREDIT
RUSSELLVILLE, ARKANSAS

DRAWN BY:
AH

CHECK BY:
NEW

ISSUE DATE:
01/25/2023

PROJECT NO:
2223

REVISION DATES:
2/20/2023

PLUMBING PLAN - AREA A

SHEET

P2.1A

COPYRIGHT 2023
THE EXCLUSIVE PROPERTY OF
HIGHT JACKSON ASSOCIATES P.A.
USE OR REPRODUCTION IS PROHIBITED
WITHOUT WRITTEN CONSENT

HSA JOB # 22-166



HSAEngineering

479 / 452 / 8922 office

7405 Ellis St.

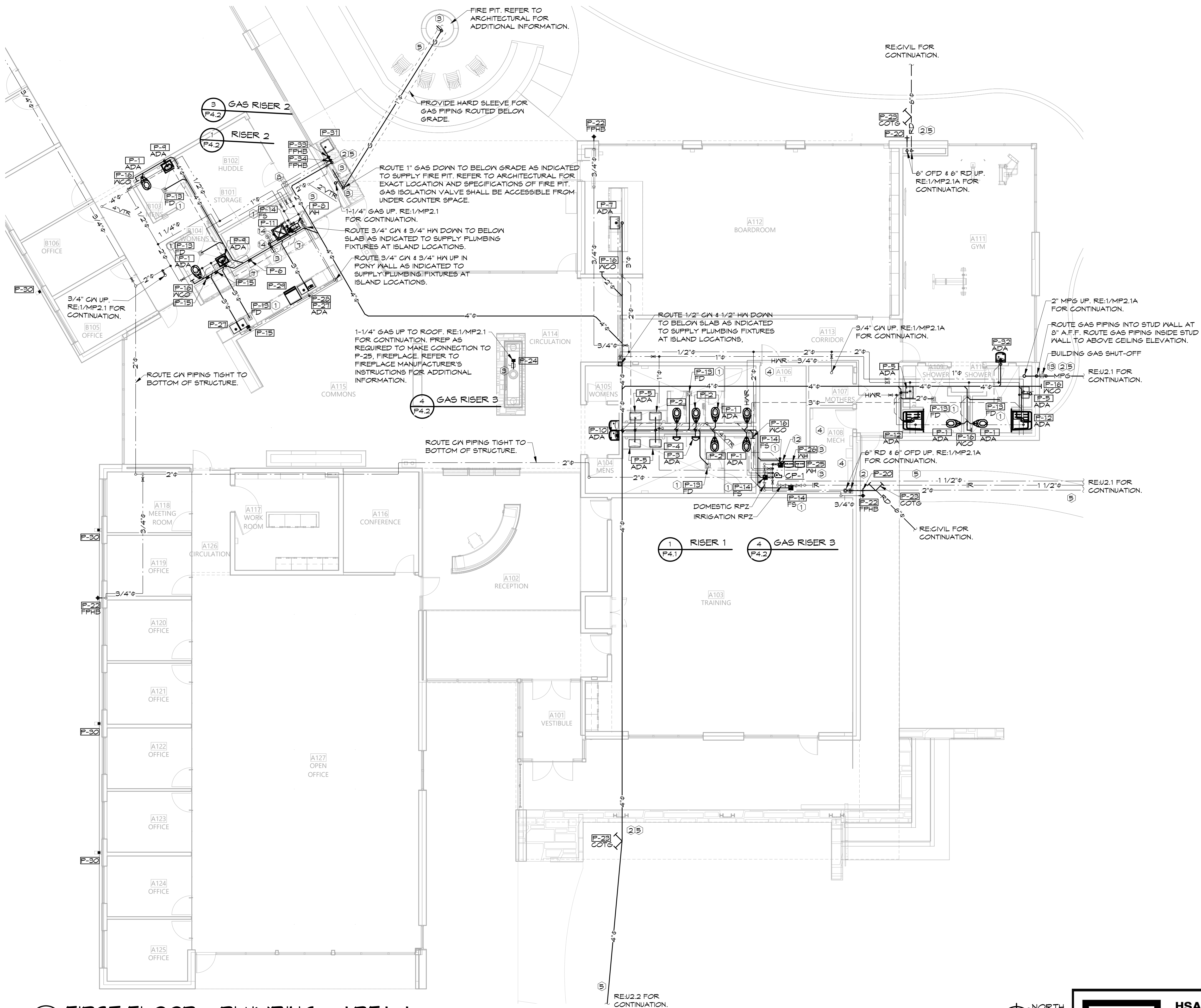
Fort Smith, AR 72916

HSAConsultants.com



NOTES:
RE:P1.1 FOR PLUMBING LEGEND, GENERAL AND KEYED NOTES.
RE:P3.1 FOR PLUMBING DETAILS. RE:P5.1 FOR PLUMBING SCHEDULES.

1 FIRST FLOOR - PLUMBING - AREA A
1/8" = 1'-0"





Hight Jackson
ASSOCIATES
5201 W Village Parkway, Suite 300 | Rogers, Arkansas 72758 | (479) 464-4965 | www.hjarch.com

As-Builts
CSUSA
8/8/2024
MA

A NEW OFFICE FOR
FARM CREDIT
RUSSELLVILLE, ARKANSAS

DRAWN BY:
AH
CHECK BY:
NEW
ISSUE DATE:
01/25/2023

PROJECT NO:
2223

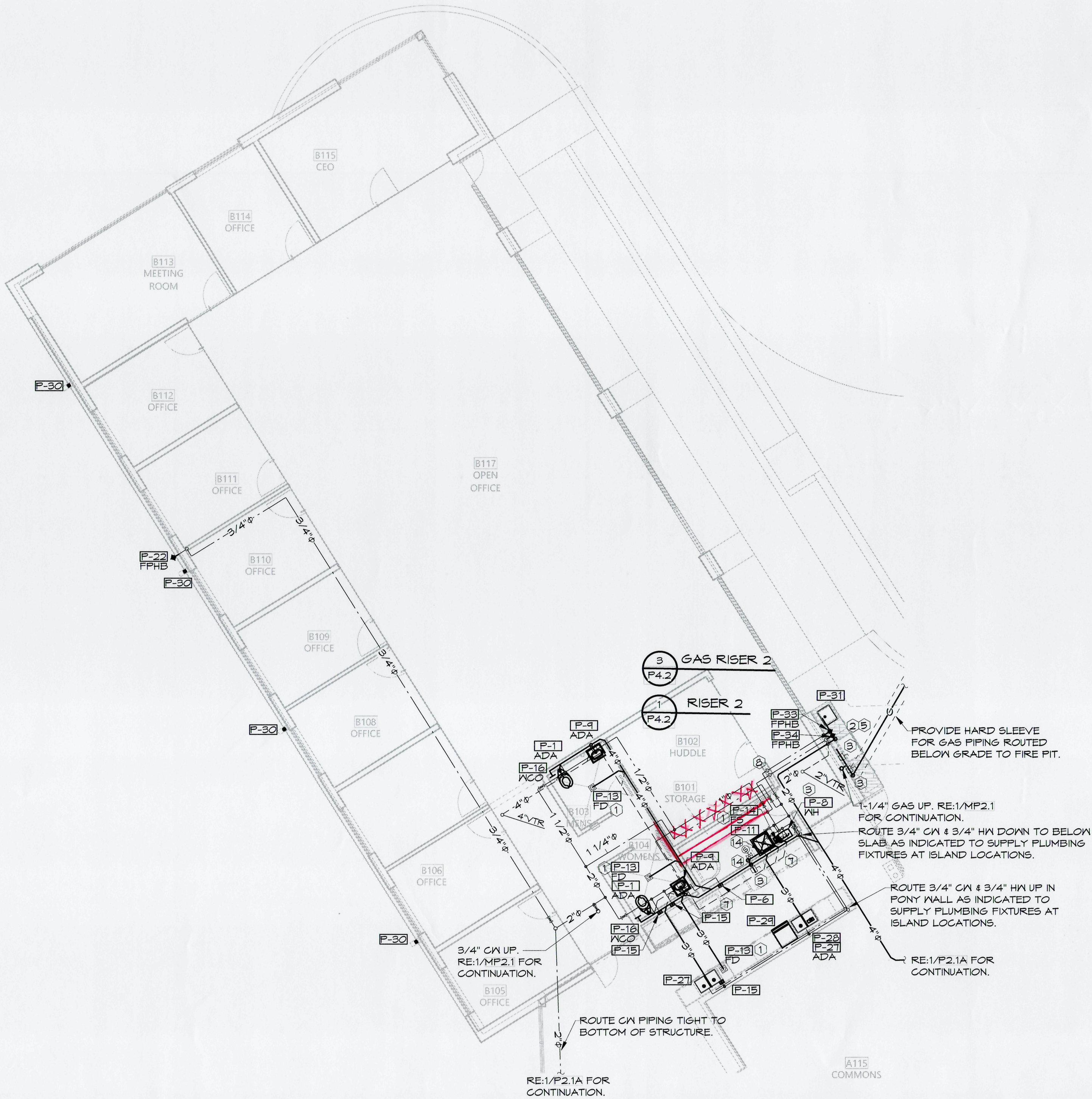
REVISION DATES:
2/20/2023

PLUMBING PLAN - AREA B

S H E E T

P2.1B

COPYRIGHT 2023
THESE DRAWINGS AND SPECIFICATIONS ARE
THE EXCLUSIVE PROPERTY OF
HIGHT JACKSON ASSOCIATES, P.A.
USE OR REPRODUCTION IS PROHIBITED
WITHOUT WRITTEN CONSENT



1 FIRST FLOOR - PLUMBING - AREA B
1/8" = 1'-0"

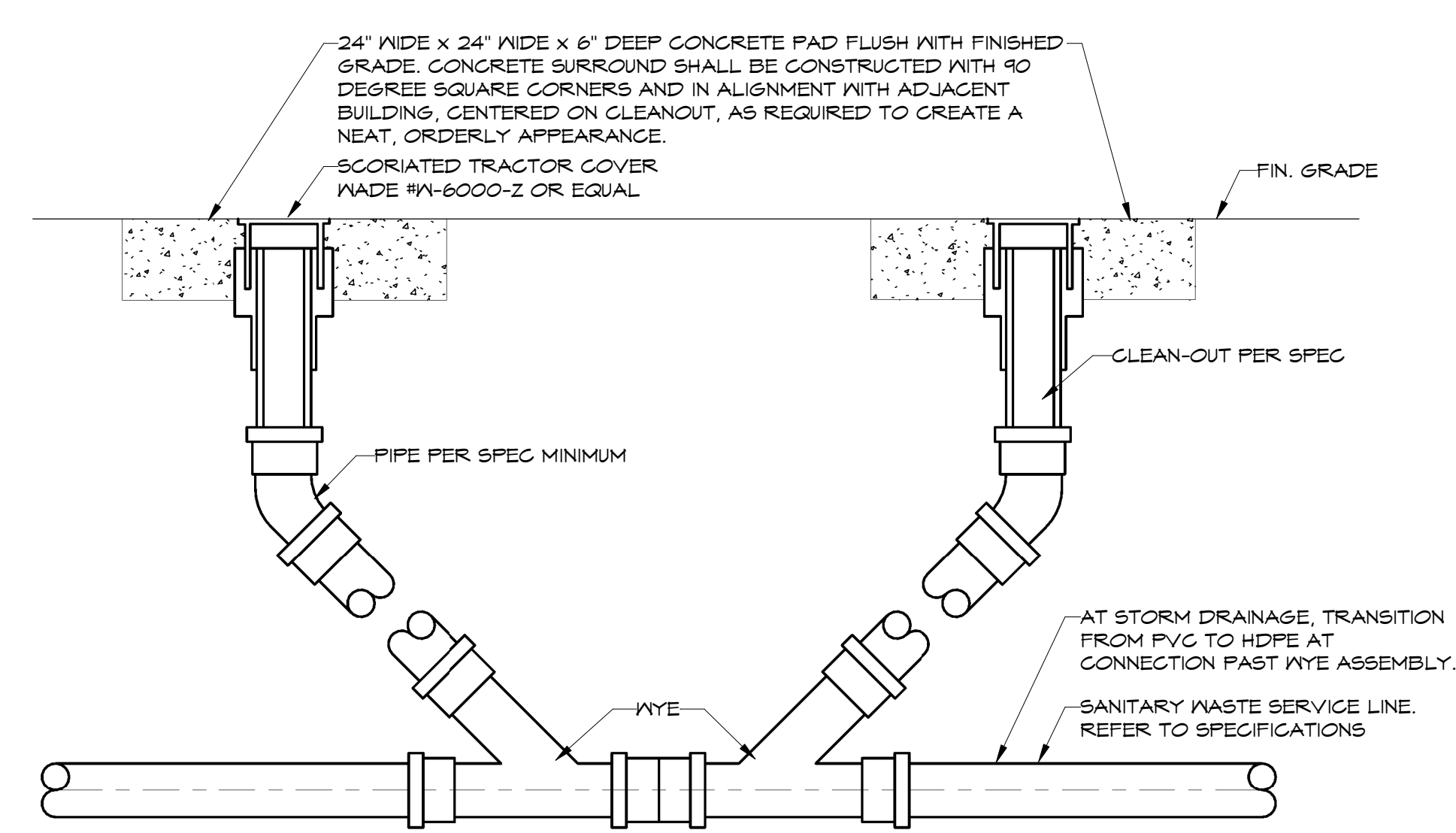


NOTES:
RE:P1.1 FOR PLUMBING LEGEND, GENERAL AND KEYED NOTES.
RE:P3.1 FOR PLUMBING DETAILS. RE:P5.1 FOR PLUMBING SCHEDULES.

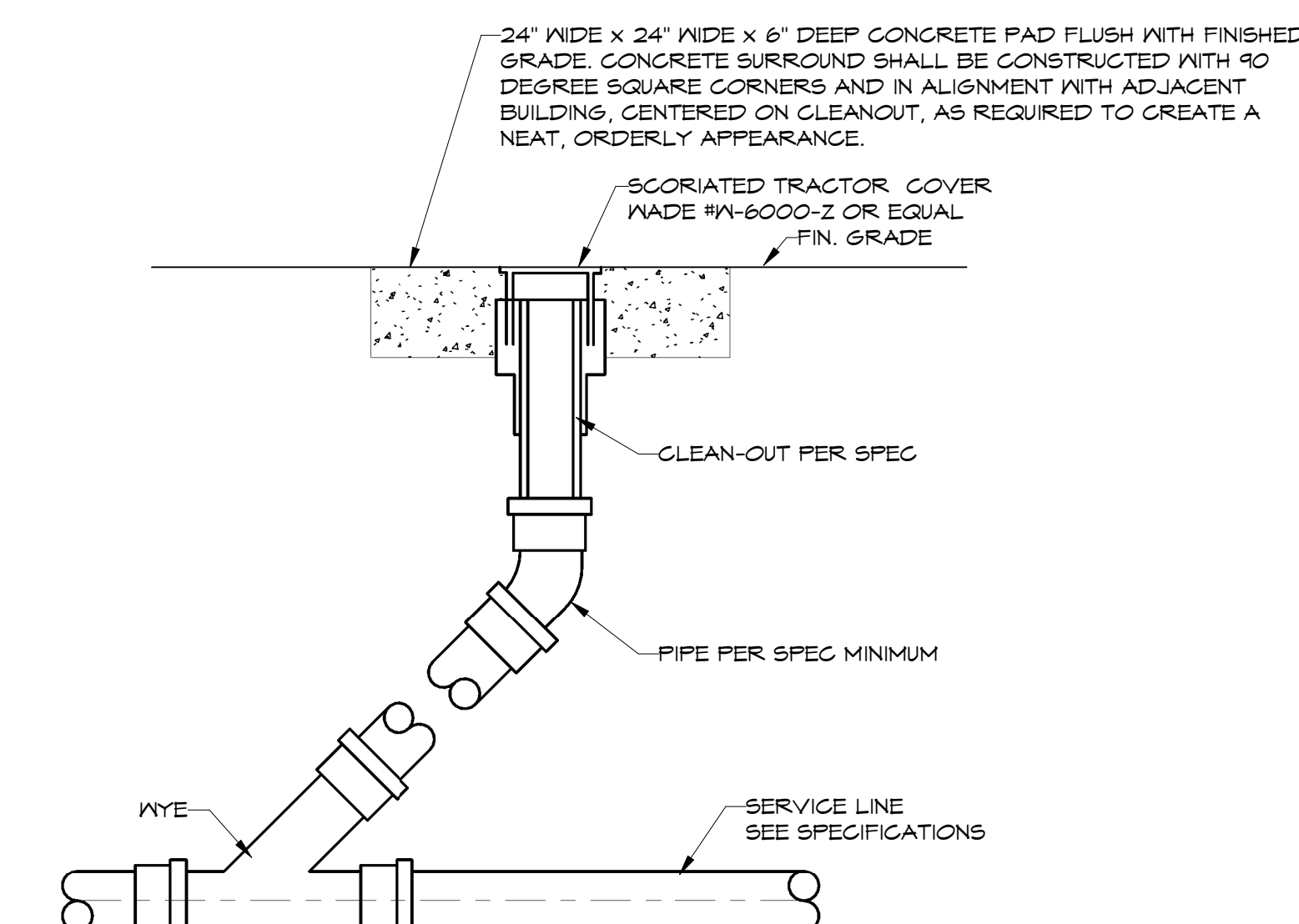


HSAEngineering
479 / 452 / 8922 office
7405 Ellis St.
Fort Smith, AR 72916
HSAConsultants.com

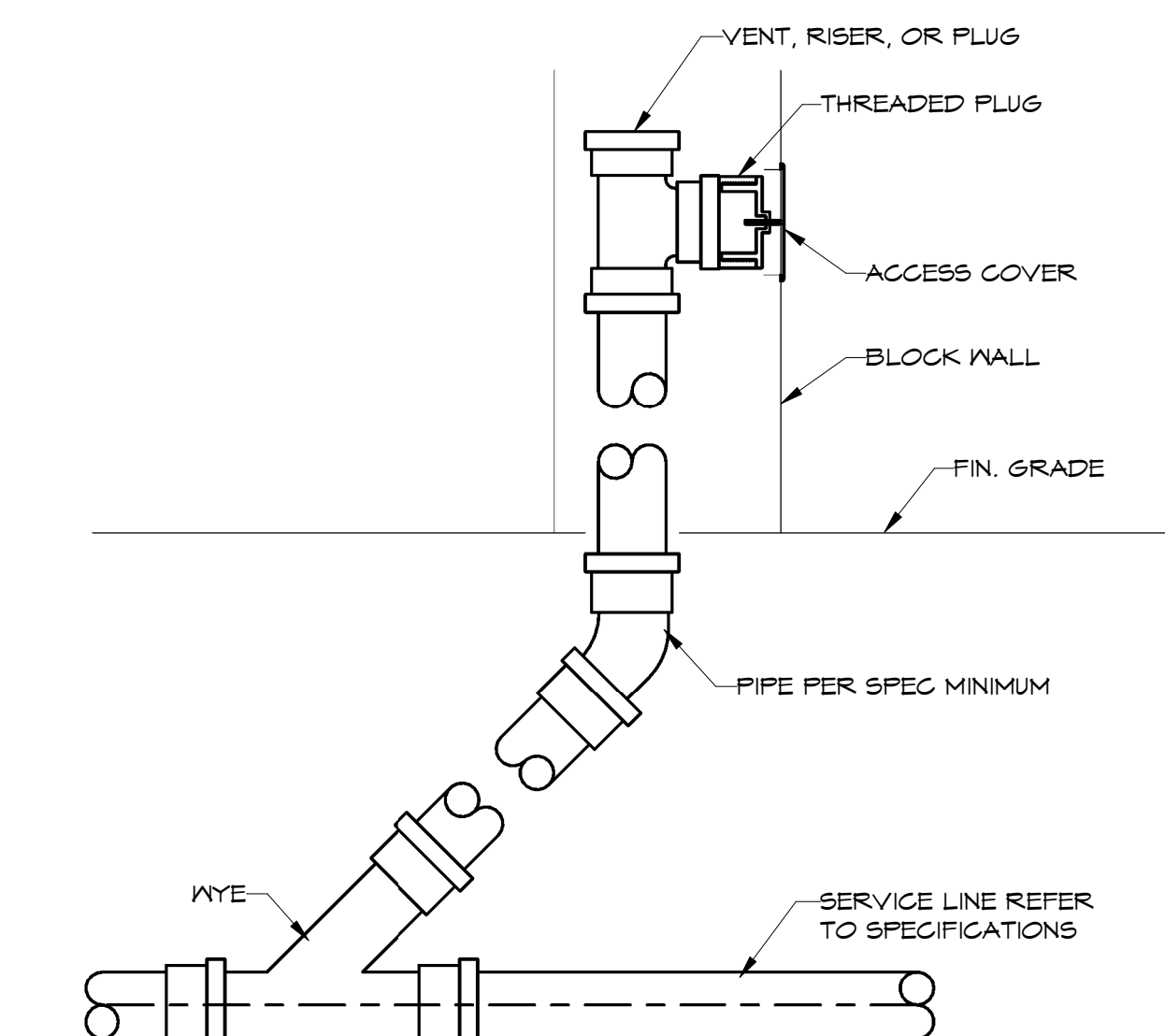
HSA JOB #22-166



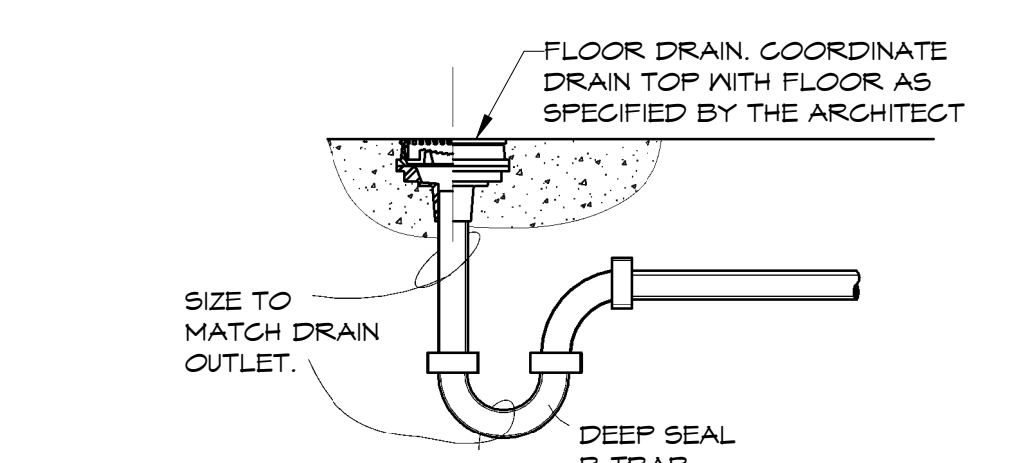
1 DOUBLE CLEAN OUT TO GRADE
NTS



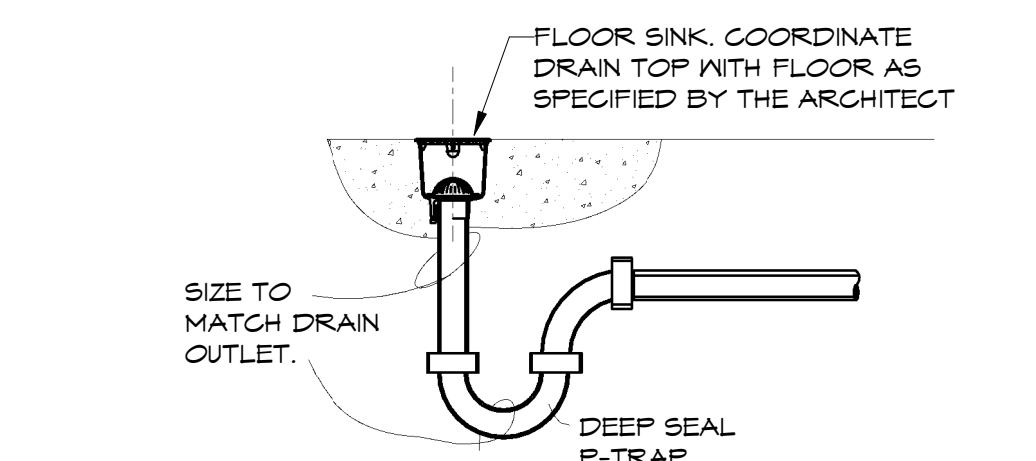
2 CLEAN OUT TO GRADE DETAIL
NTS



3 WALL CLEAN OUT DETAIL
NTS

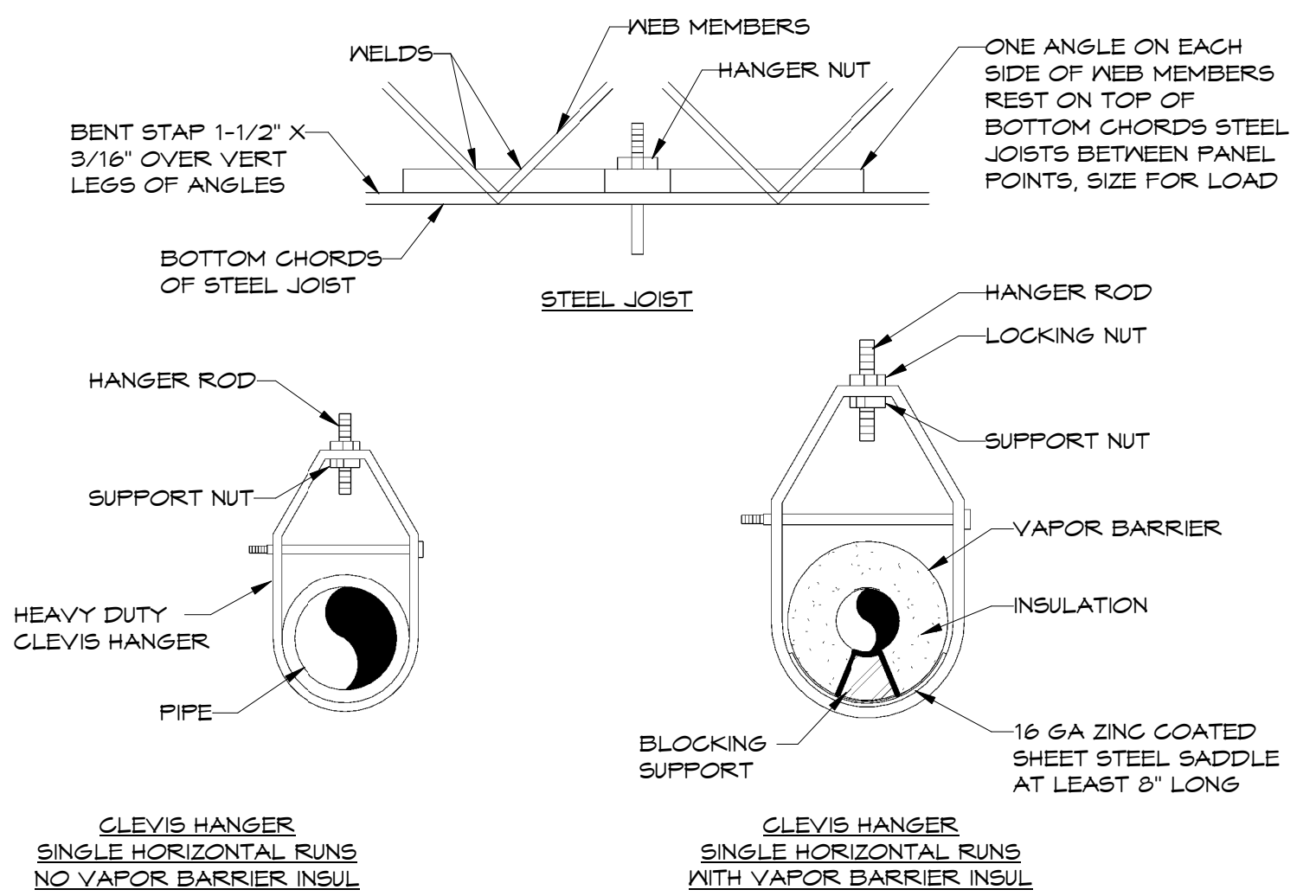


4 FLOOR DRAIN DETAIL
NTS

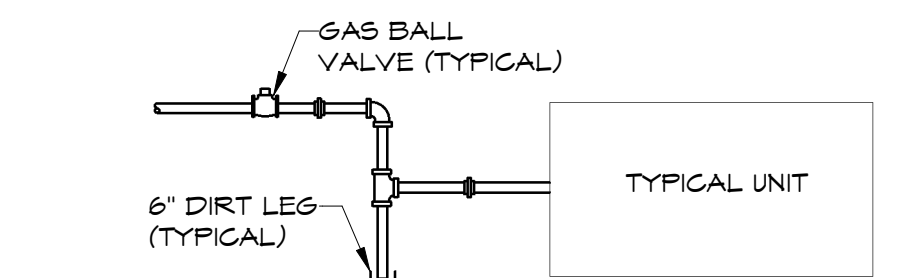


5 FLOOR SINK DETAIL
NTS

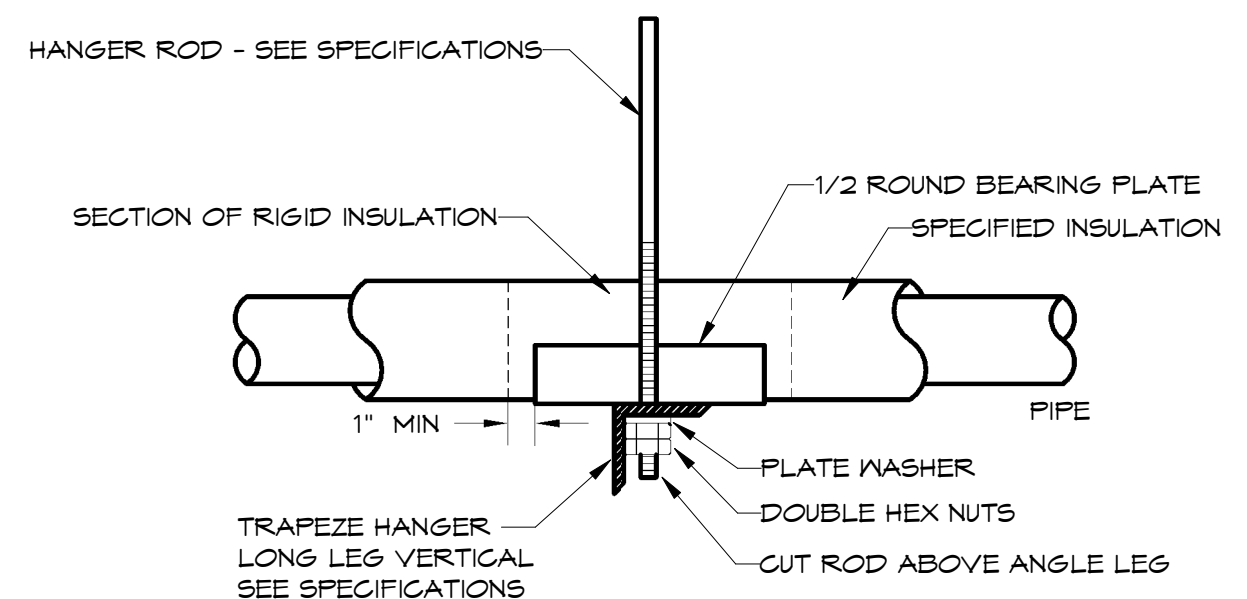
HANGER ROD SCHEDULE			
PIPE SIZE	ROD SIZE	PIPE SIZE	ROD SIZE
UP TO 2"	1/4" DIA	8" THRU 12"	1/2" DIA
2 1/2" UP TO 6"	3/8" DIA		



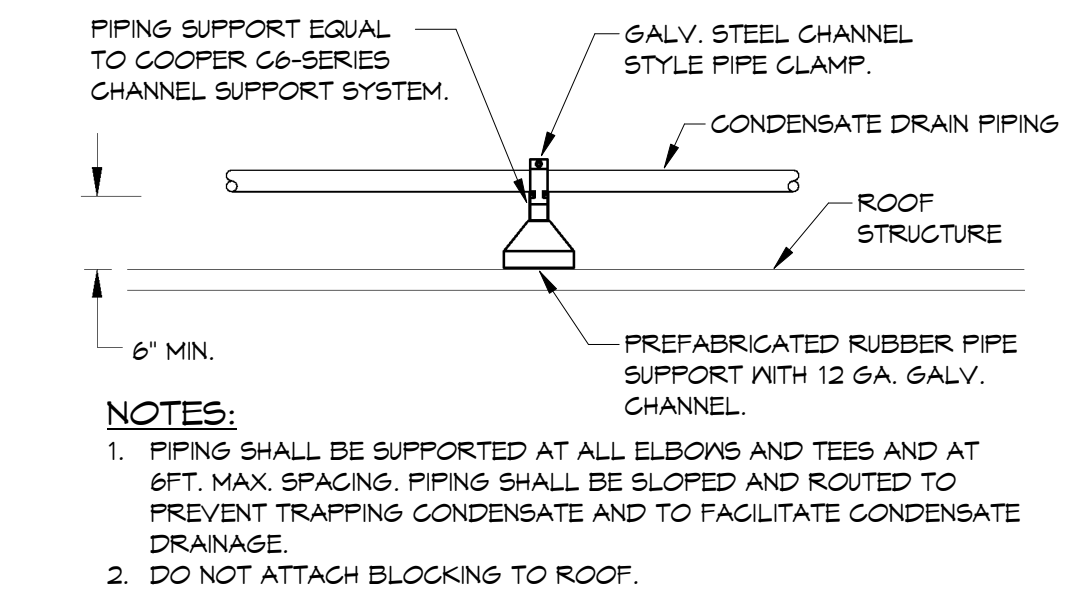
6 TYPICAL PIPE HANGER DETAIL-CLEVIS HANGER
NTS



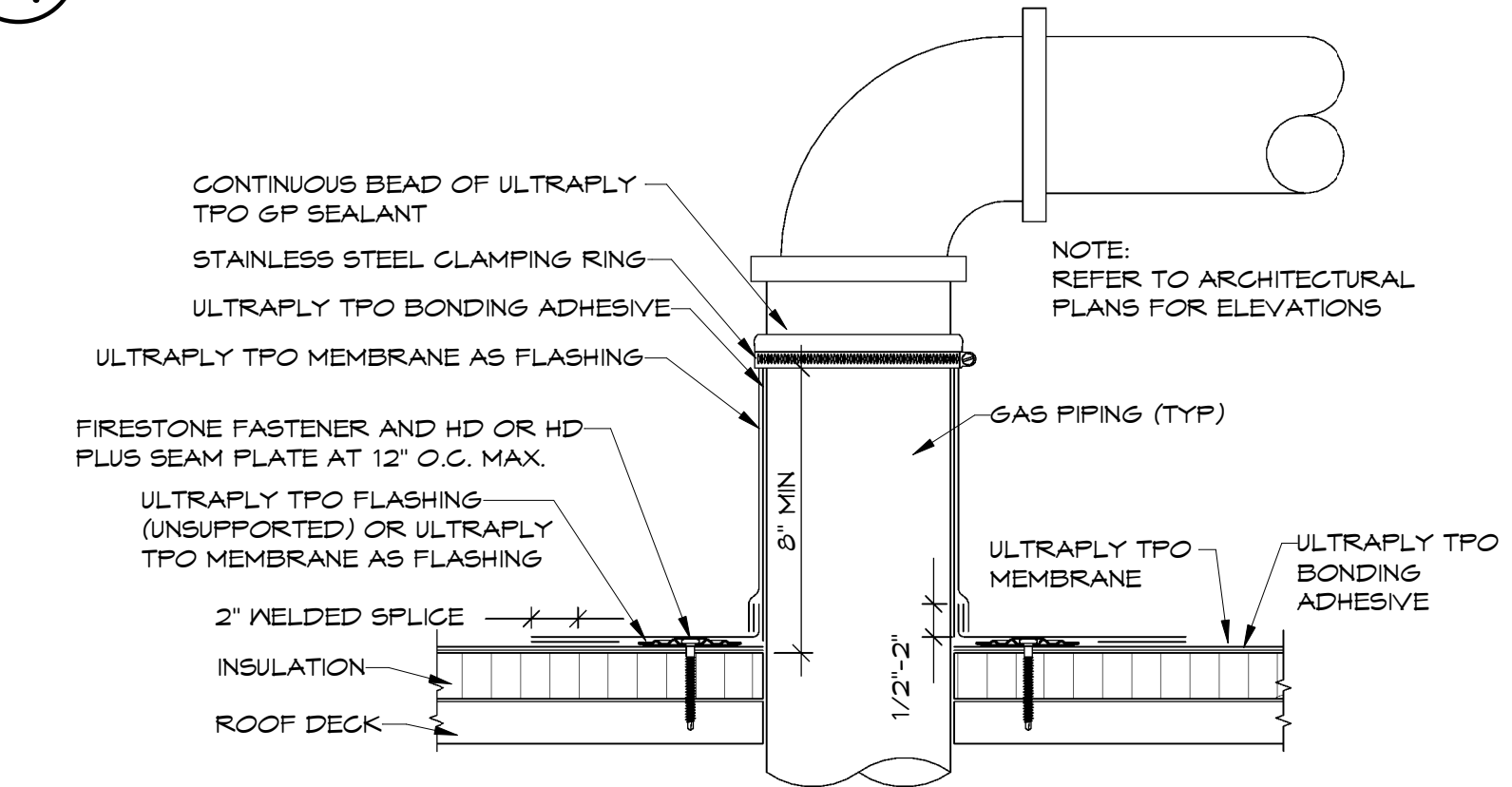
7 TYPICAL GAS CONNECTION
NTS



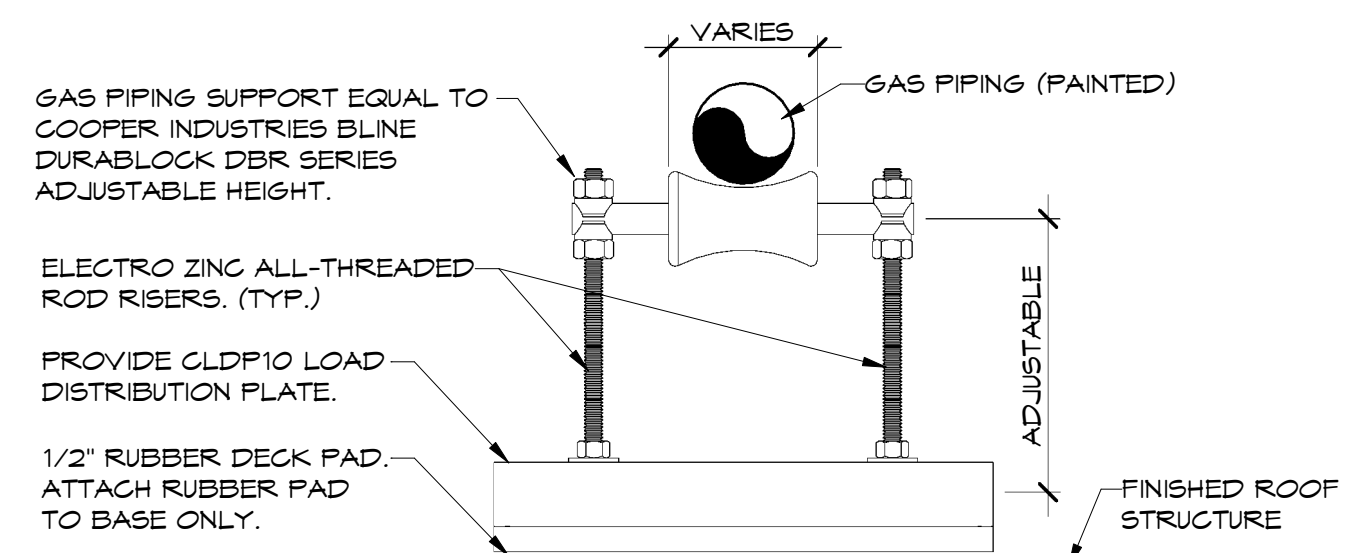
8 TYPICAL PIPE HANGER DETAIL-TRAPEZE
NTS



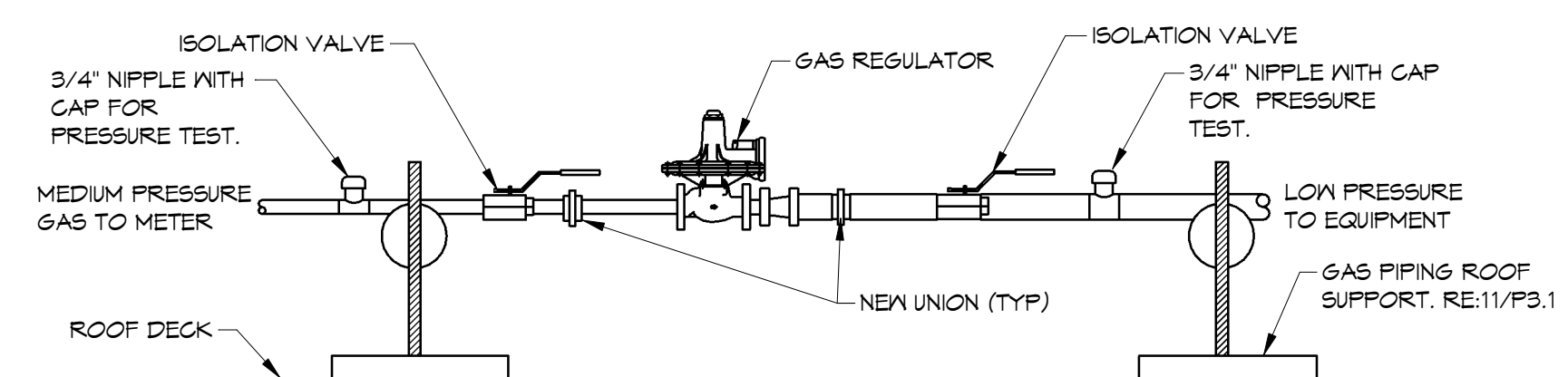
9 CONDENSATE PIPING SUPPORT DETAIL
NTS



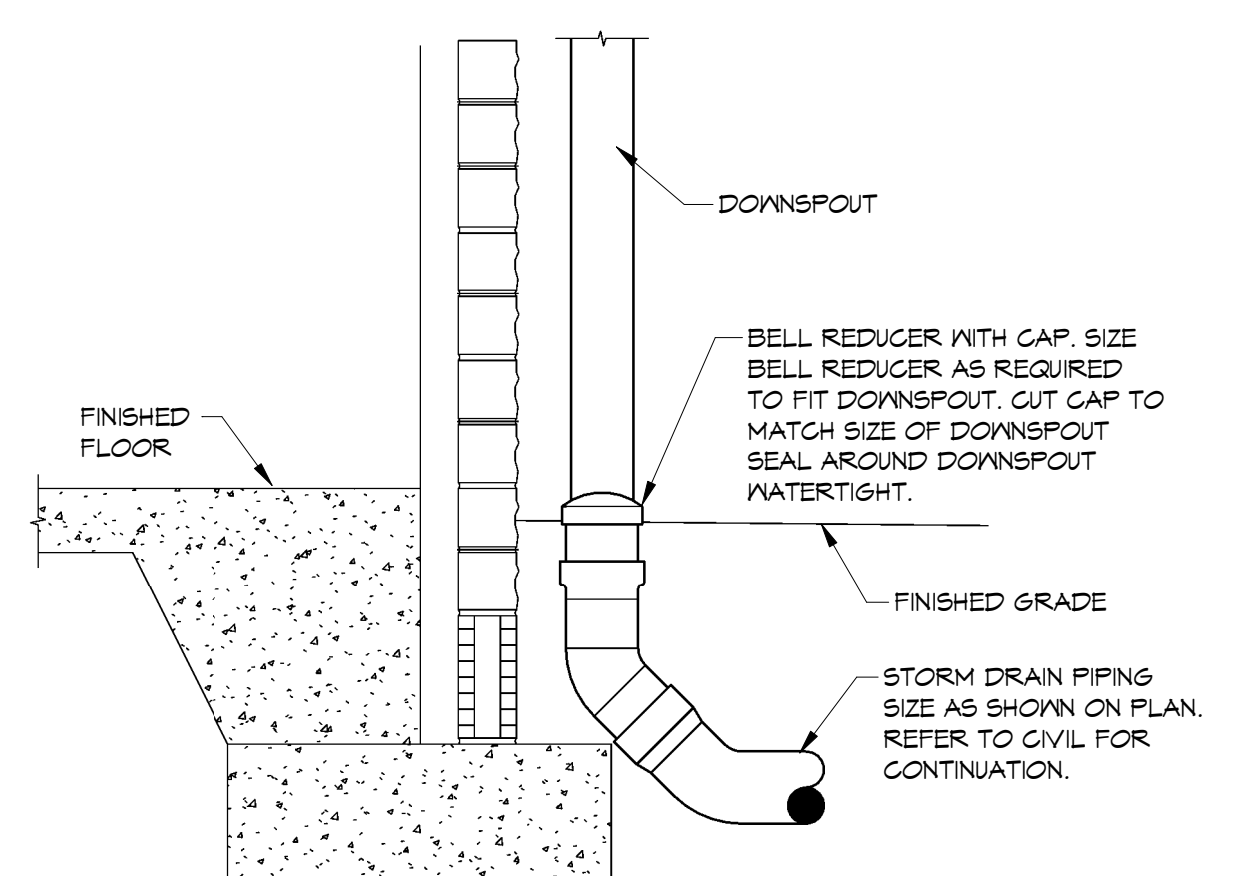
10 GAS PIPING PENETRATION (TPO) DETAIL
NTS



11 GAS PIPING SUPPORT DETAIL
NTS



12 GAS REGULATOR DETAIL
NTS



13 DOWNSPOUT BOOT DETAIL
NTS

NOTES:
RE: P1.1 FOR PLUMBING LEGEND, GENERAL AND KEYED NOTES. RE: P3.1 FOR PLUMBING SCHEDULES.

HSAEngineering
479 / 452 / 8922 office
7405 Ellis St.
Fort Smith, AR 72916
HSAConsultants.com



Hight Jackson
ASSOCIATES
5201 W Village Parkway, Suite 300 | Rogers, Arkansas 72768 | (479) 464-4965 | www.hjarch.com

As-Built
CSUSA
8/8/2024
MA

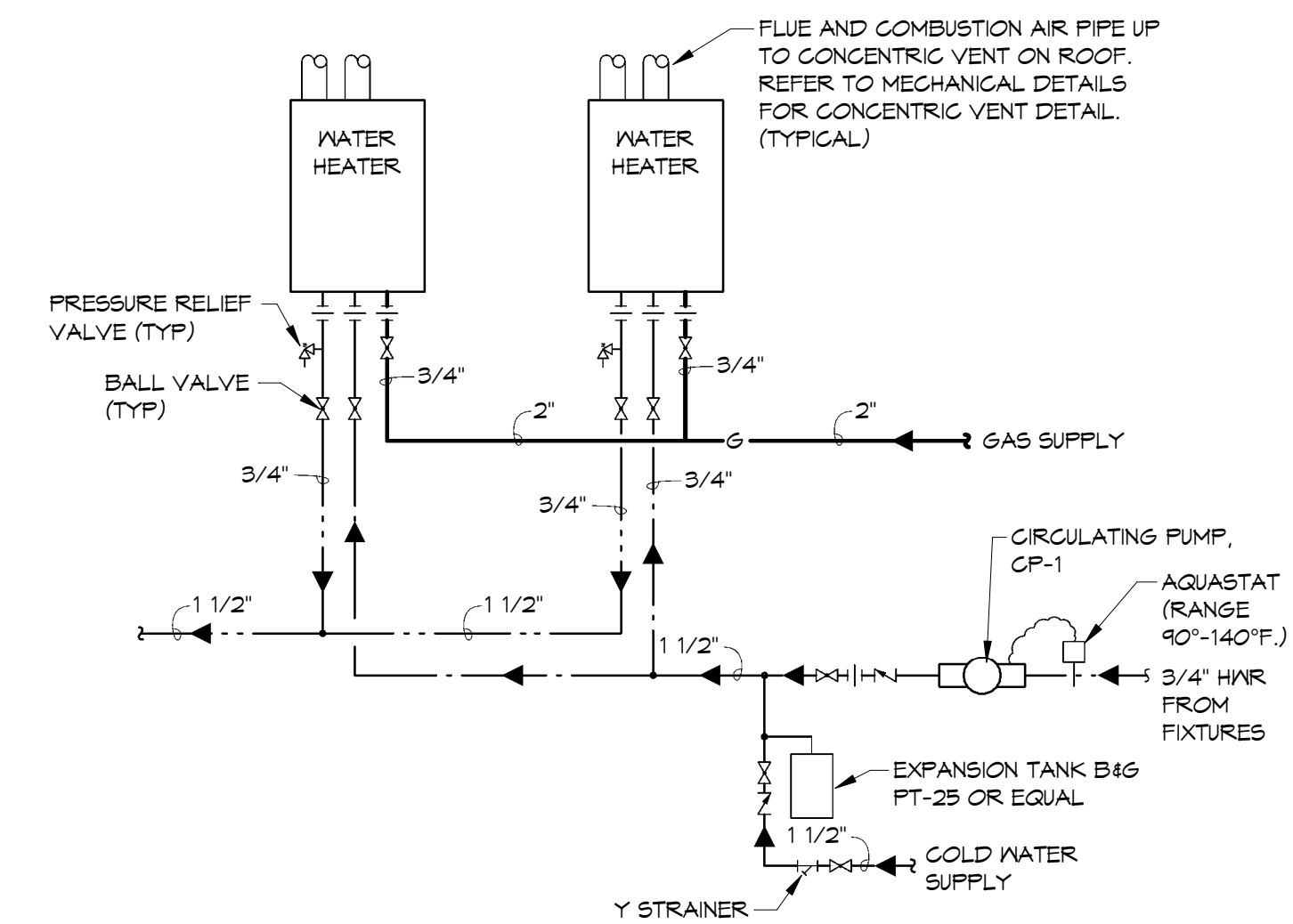
A NEW OFFICE FOR
FARM CREDIT
RUSSELLVILLE, ARKANSAS

DRAWN BY:
AH
CHECK BY:
NEW
ISSUE DATE
01/25/2023

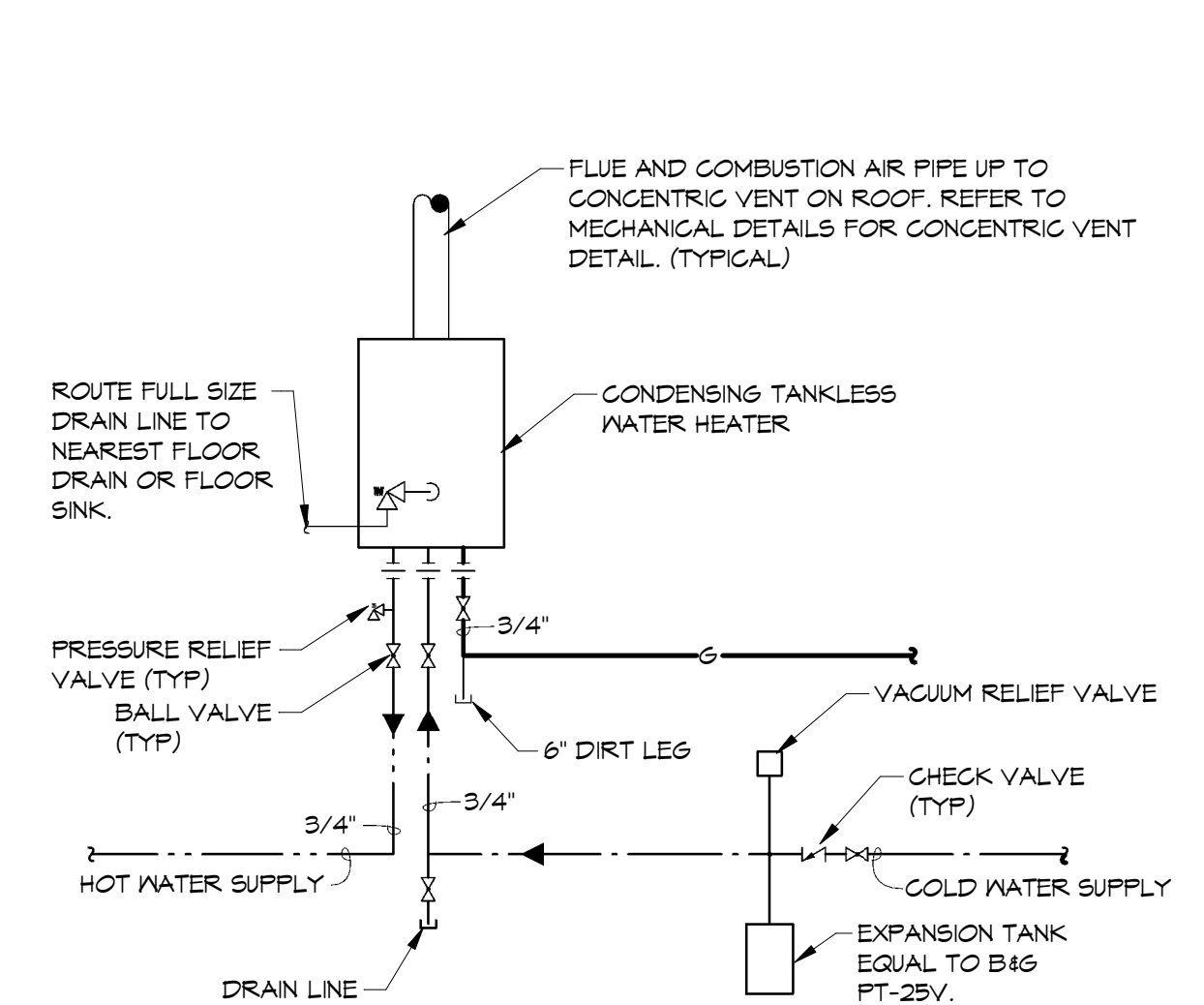
PROJECT NO.
2223
REVISION DATES
2/20/2023

PLUMBING DETAILS
SHEET
P3.1

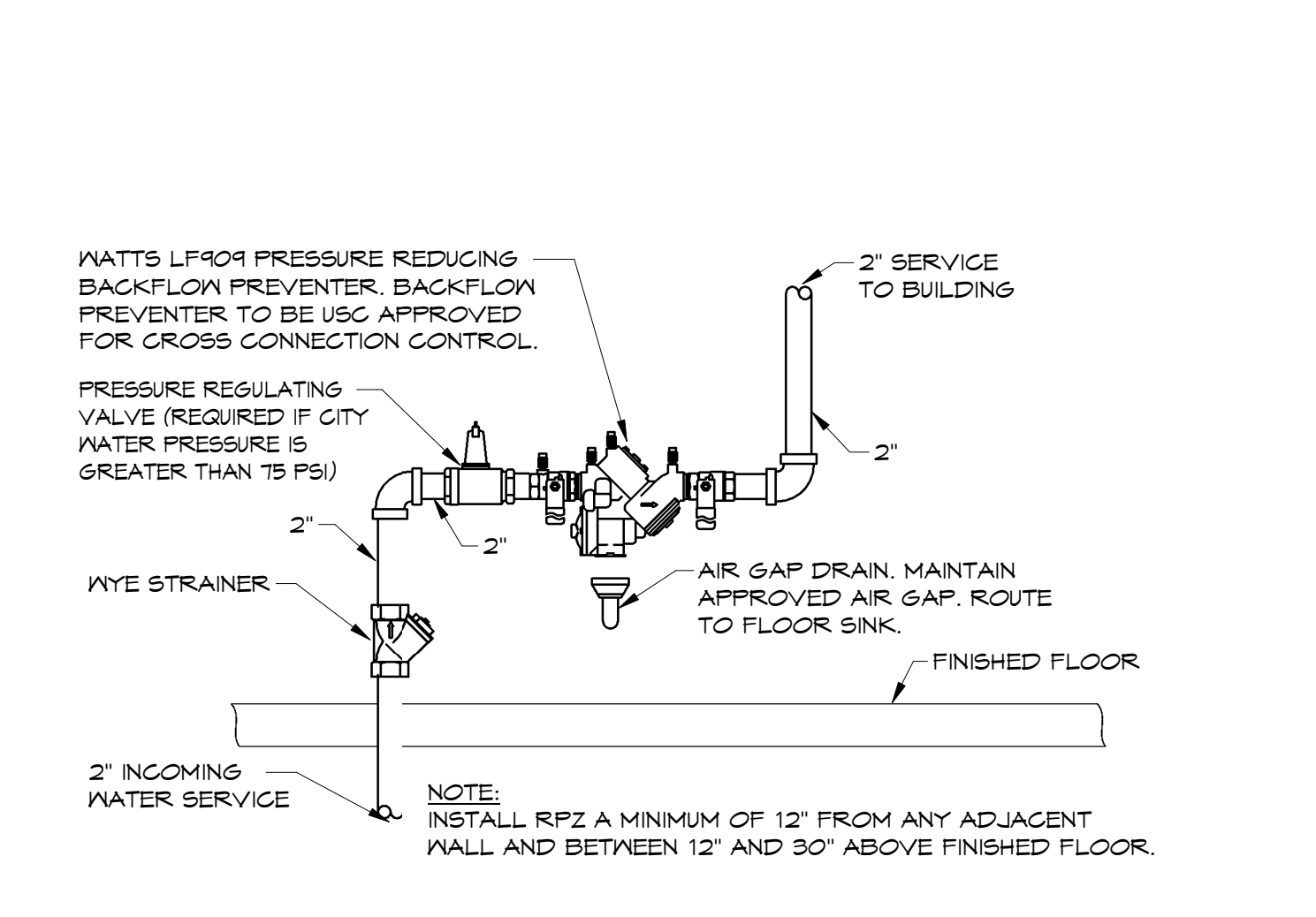
COPYRIGHT 2023
THESE DRAWINGS AND SPECIFICATIONS ARE THE EXCLUSIVE PROPERTY OF HIGHT JACKSON ASSOCIATES P.A. USE OR REPRODUCTION IS PROHIBITED WITHOUT WRITTEN CONSENT.



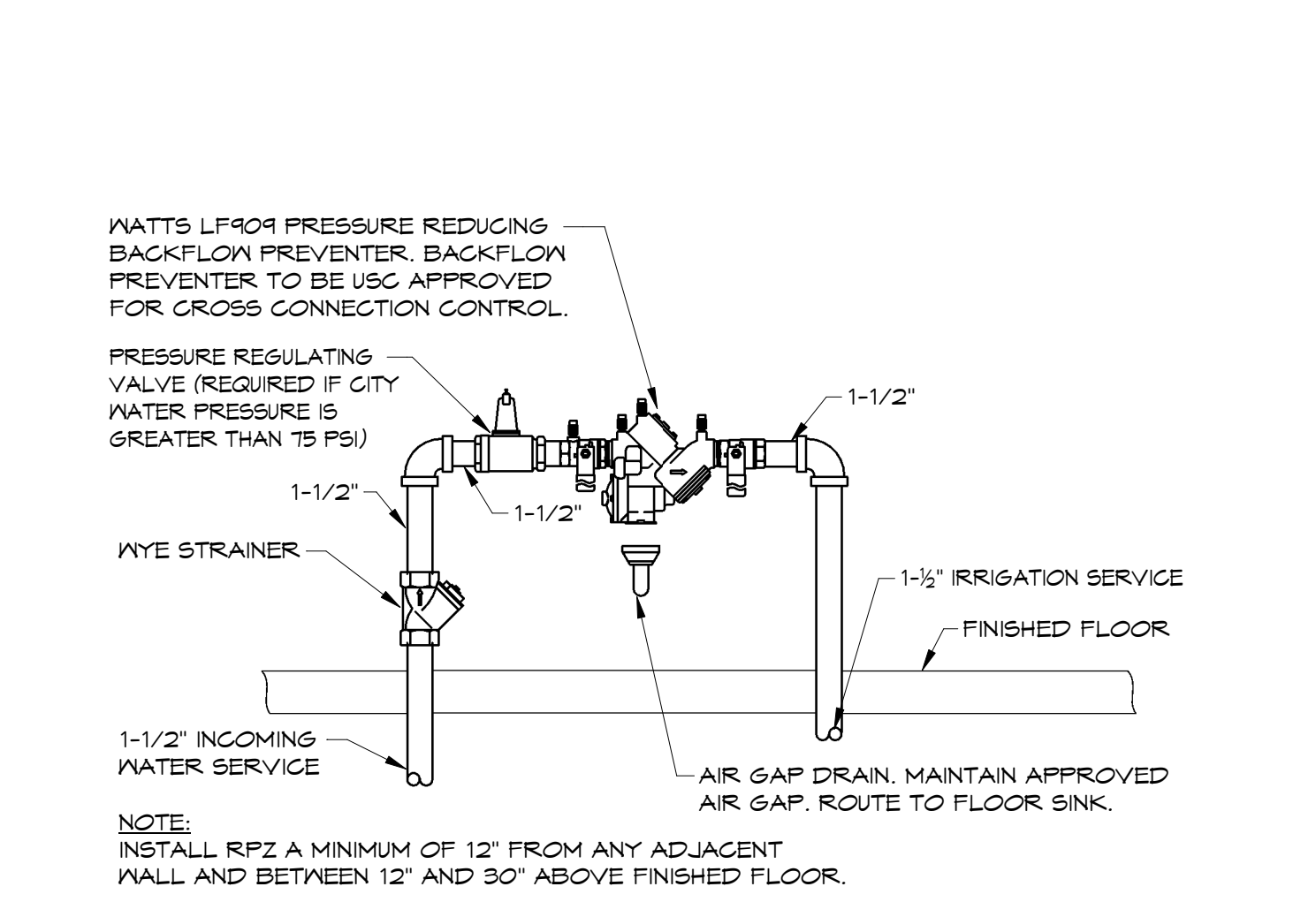
1 GAS WATER HEATERS DETAIL
NTS



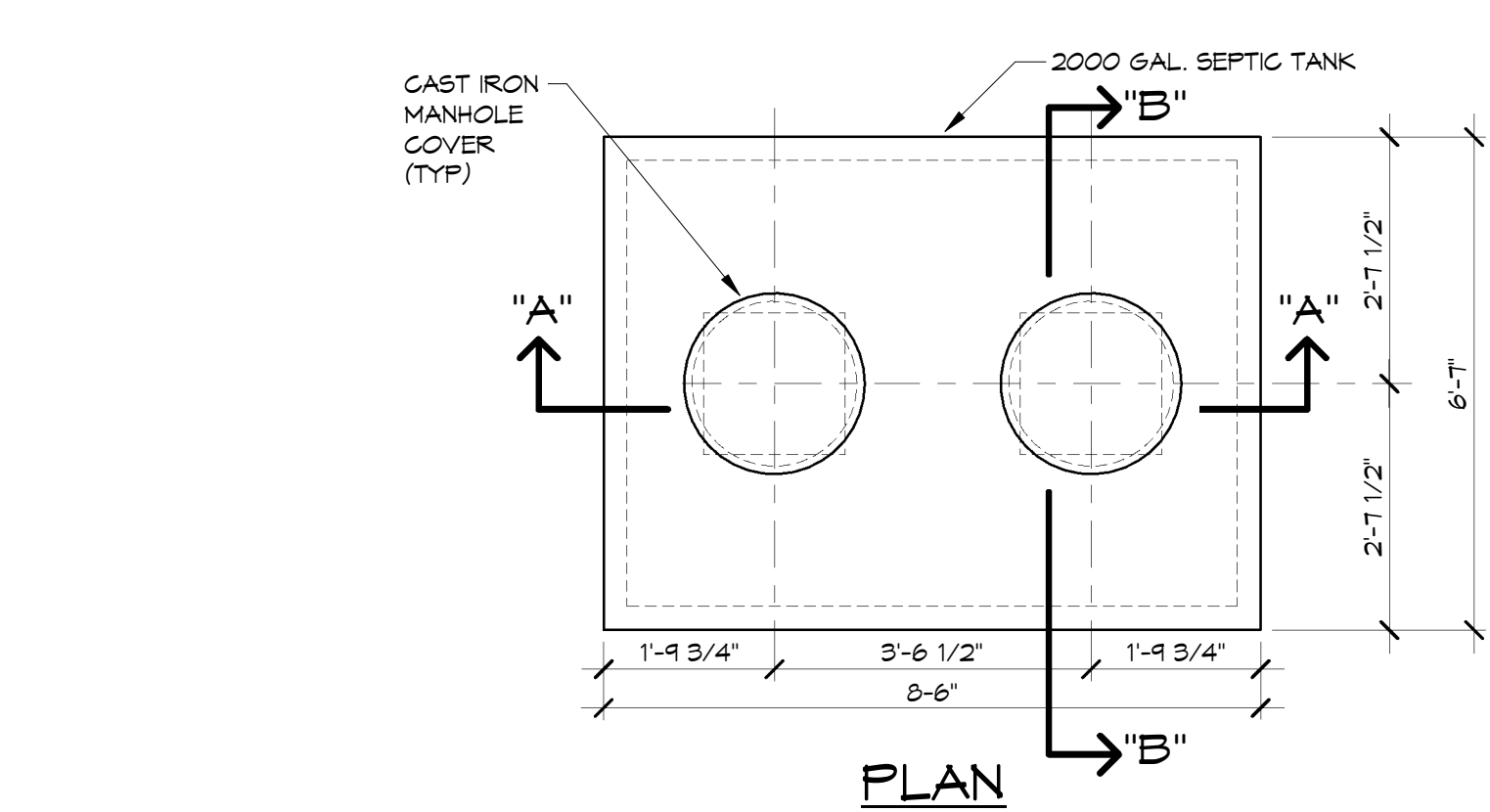
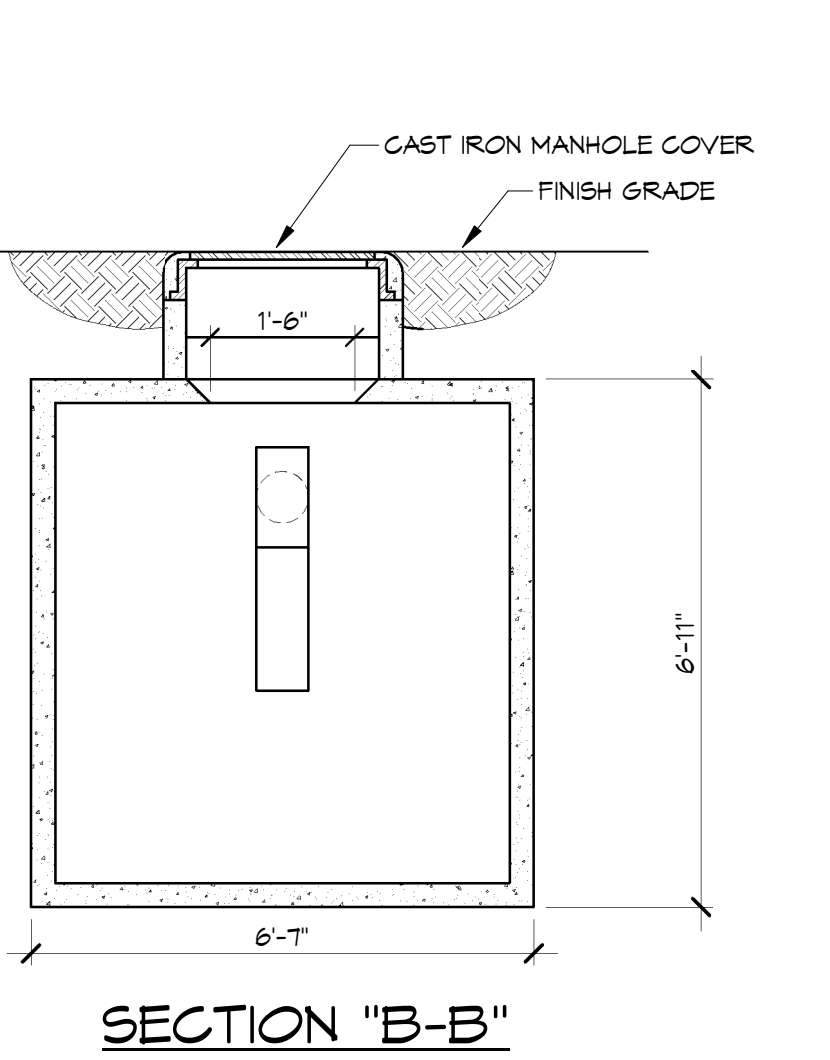
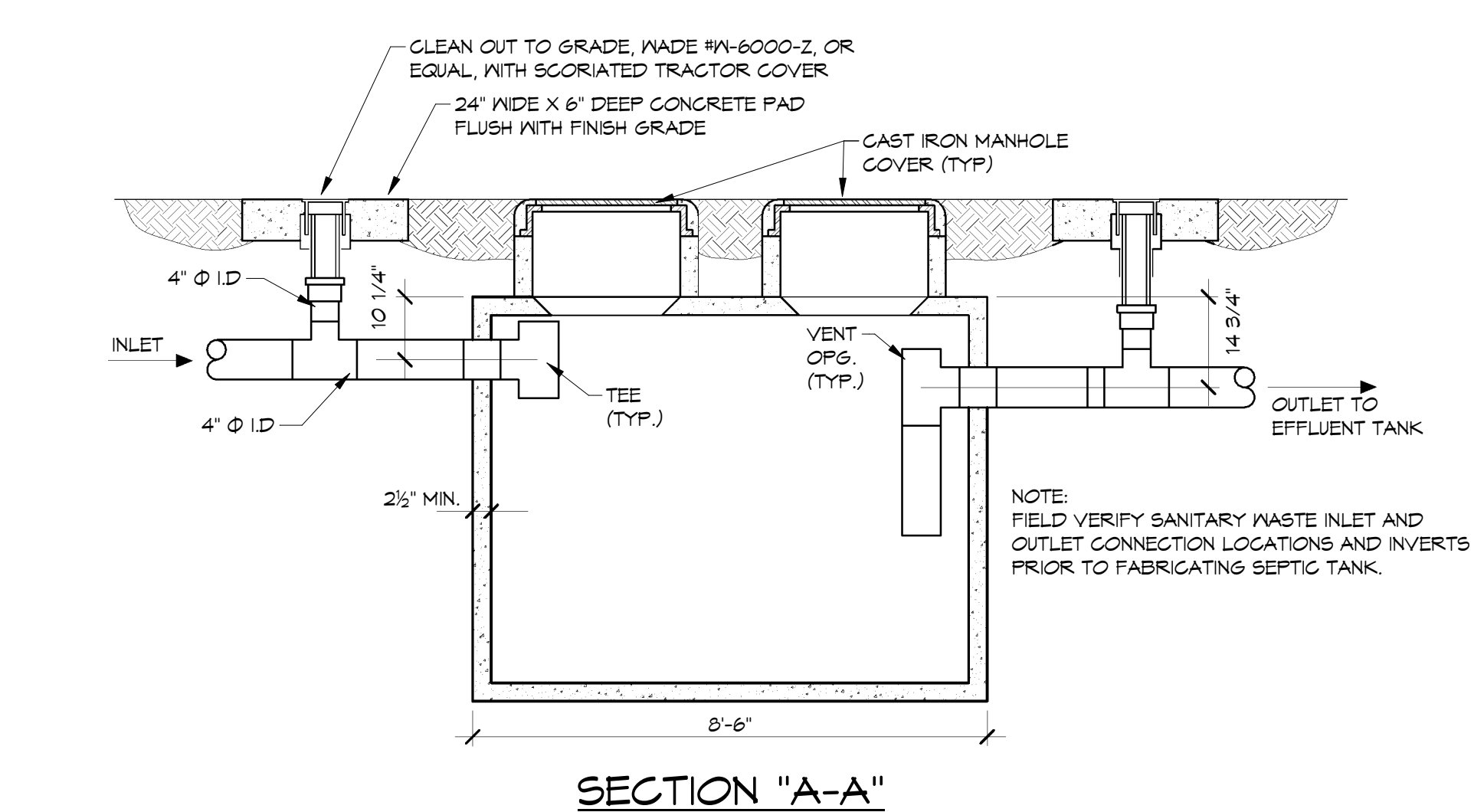
2 GAS WATER HEATER DETAIL
NTS



3 DOMESTIC RPZ DETAIL
NTS

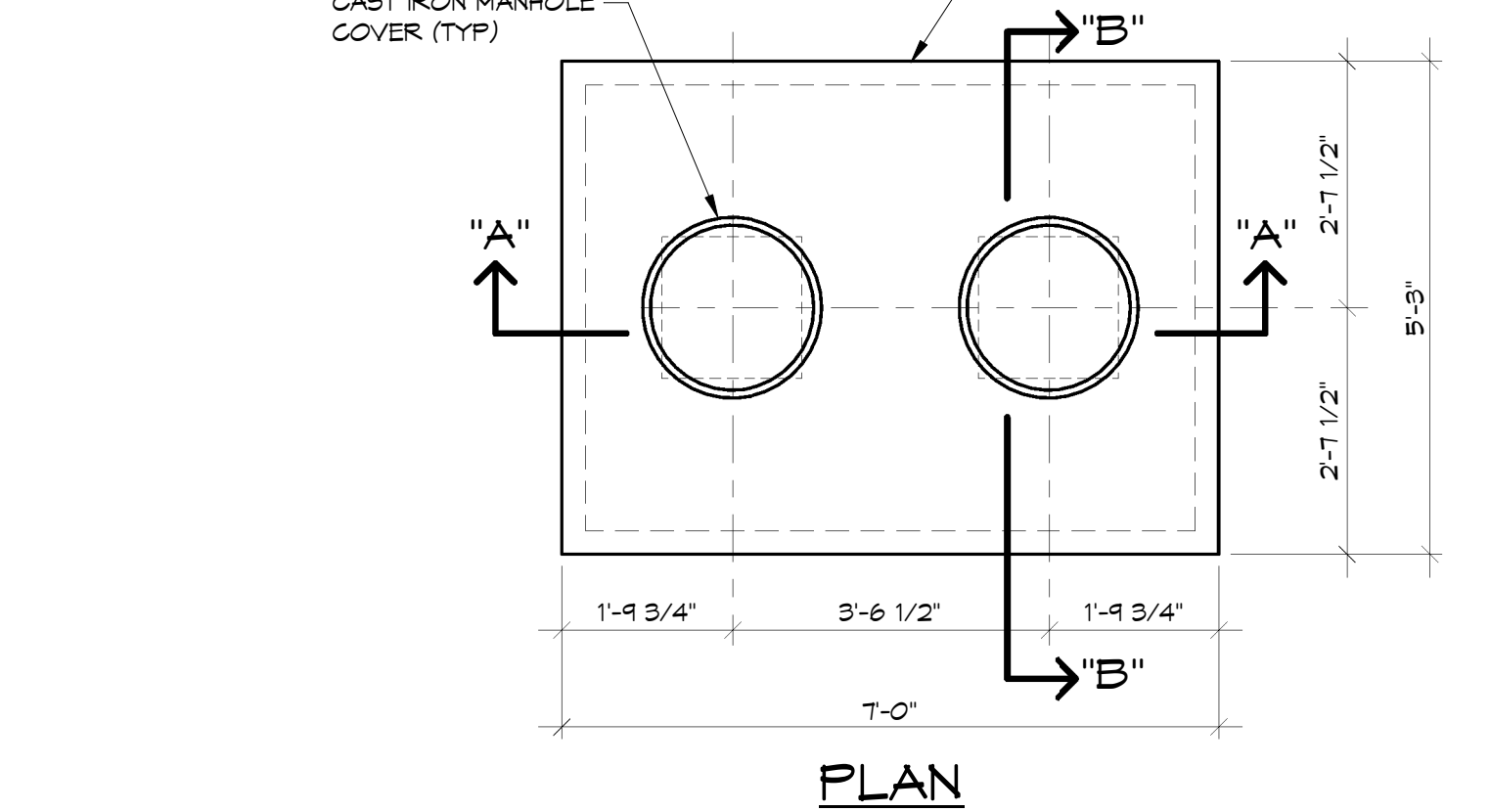
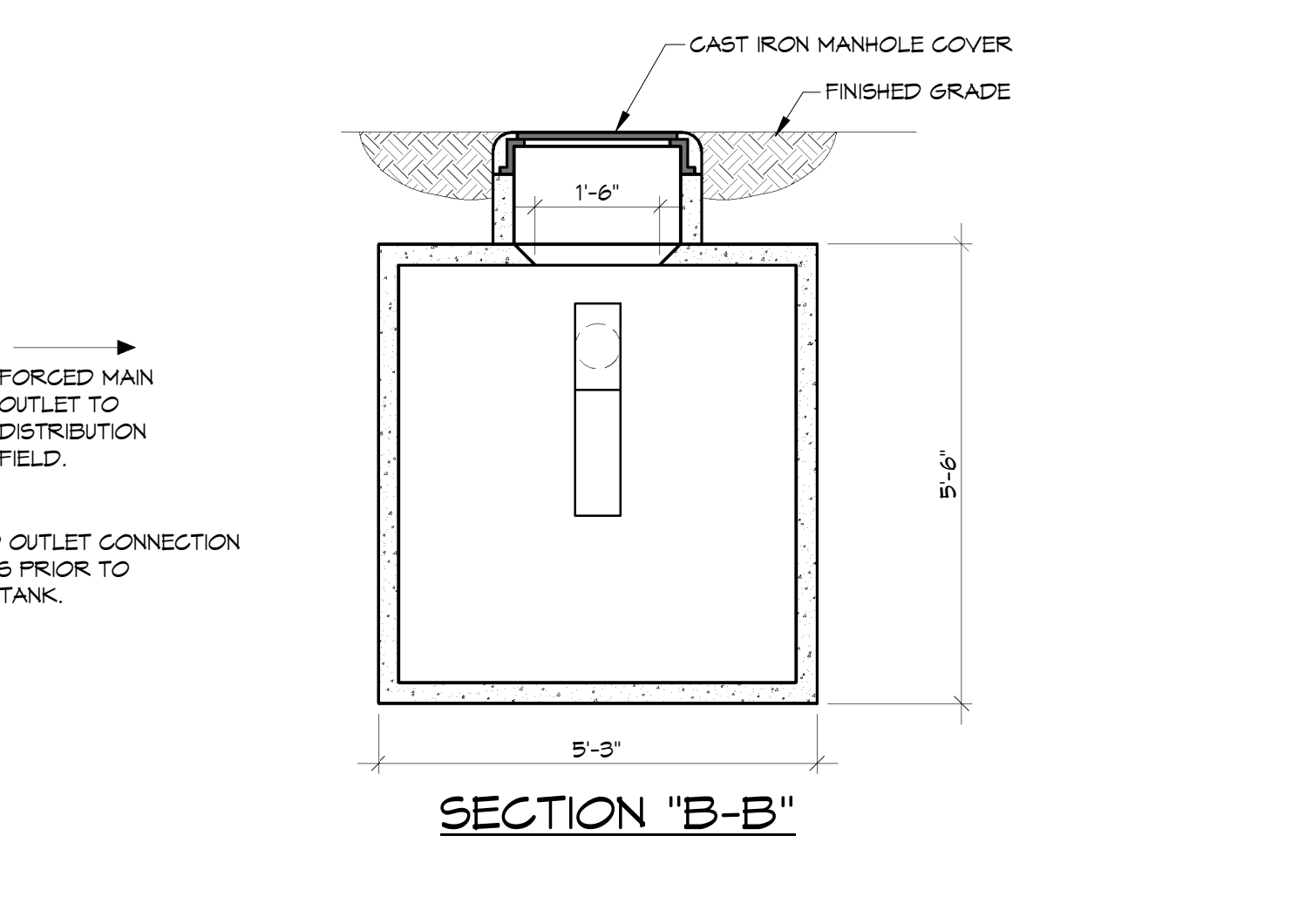
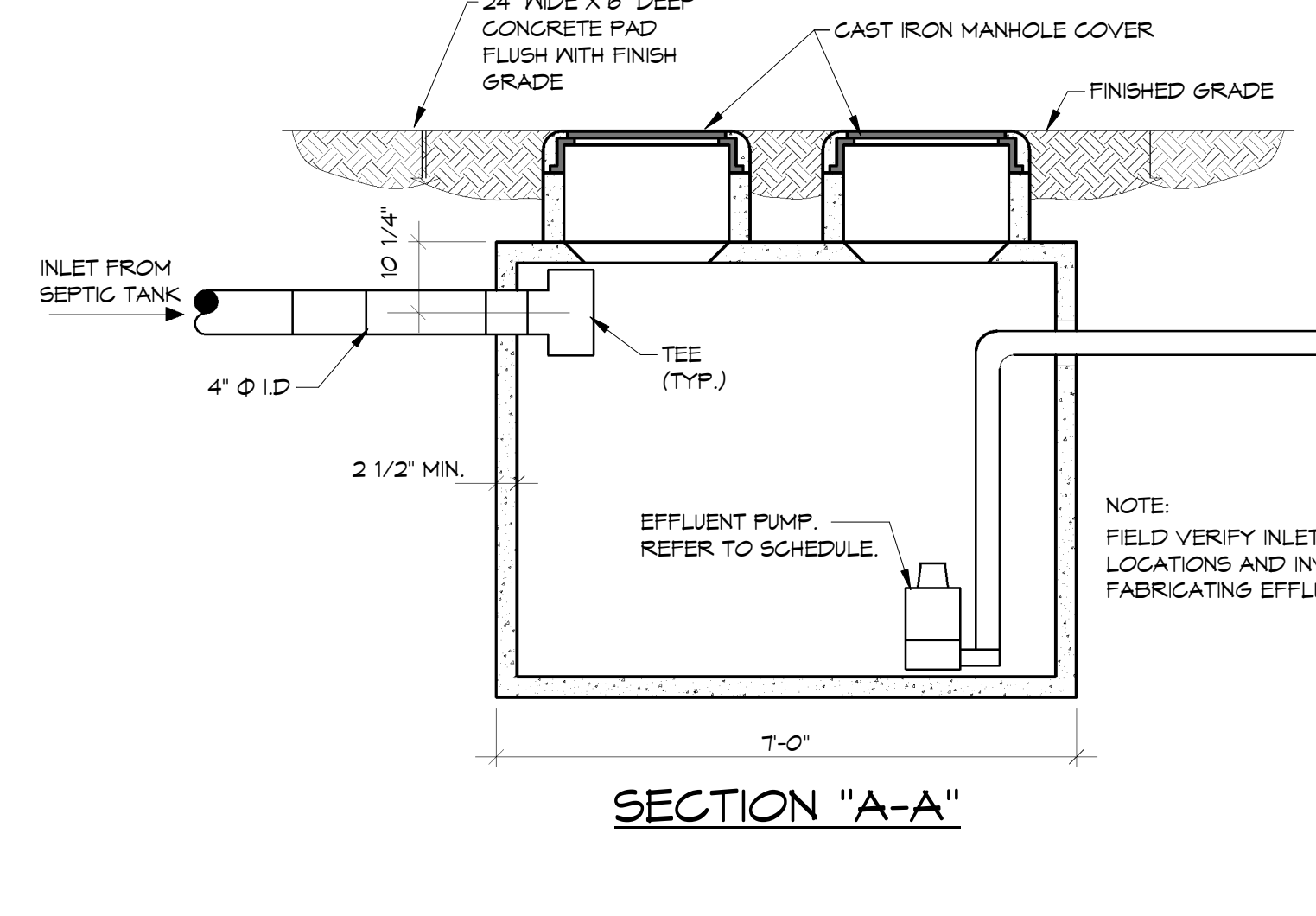


4 IRRIGATION RPZ DETAIL
NTS



- NOTES**
1. WALLS AND FLOOR CONSTRUCTED OF MINIMUM 2 1/2 IN. THICK CONCRETE WITH 6 IN. X 6 IN. 10 GA. STEEL FABRIC REINFORCEMENT. TOP SHALL BE MINIMUM 3 IN. THICK CONCRETE WITH #4 REBAR @ 12 IN. O.C. IN EACH DIRECTION.
 2. FILL TANK WITH WATER PRIOR TO BACK FILL.
 3. EXACT SPECIFICATIONS OF SEPTIC TANK SHALL BE VERIFIED WITH LICENSED SEPTIC DESIGNER PRIOR TO CONSTRUCTION.

5 2000 GALLON SEPTIC TANK DETAIL
NTS



- NOTES**
1. WALLS AND FLOOR CONSTRUCTED OF MINIMUM 2 1/2 IN. THICK CONCRETE WITH 6 IN. X 6 IN. 10 GA. STEEL FABRIC REINFORCEMENT. TOP SHALL BE MINIMUM 3 IN. THICK CONCRETE WITH #4 REBAR @ 12 IN. O.C. IN EACH DIRECTION.
 2. FILL TANK WITH WATER PRIOR TO BACK FILL.
 3. EXACT SPECIFICATIONS OF EFFLUENT TANK AND PUMP SHALL BE VERIFIED WITH LICENSED SEPTIC DESIGNER PRIOR TO CONSTRUCTION.

6 1000 GALLON EFFLUENT TANK DETAIL
NTS

NOTES:
RE: P1.1 FOR PLUMBING LEGEND, GENERAL AND KEYED NOTES. RE: P5.1 FOR PLUMBING SCHEDULES.

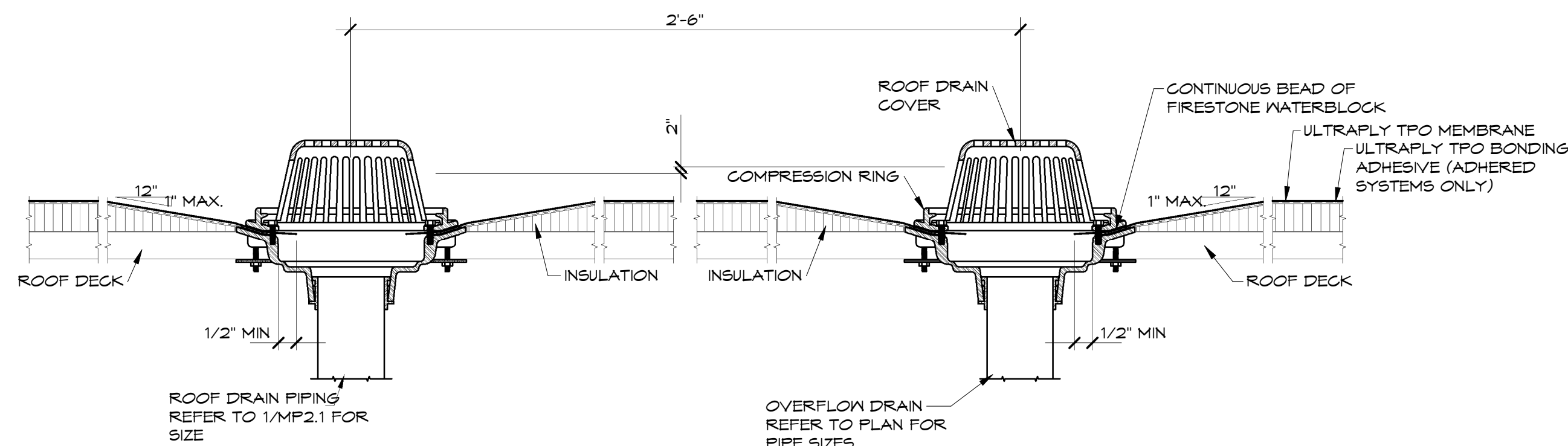
HSAEngineering
479 / 452 / 8922 office
7405 Ellis St.
Fort Smith, AR 72916
HSAConsultants.com

Hight Jackson ASSOCIATES
5201 W Village Parkway, Suite 300 | Rogers, Arkansas 72758 | (479) 464-4965 | www.hjarch.com

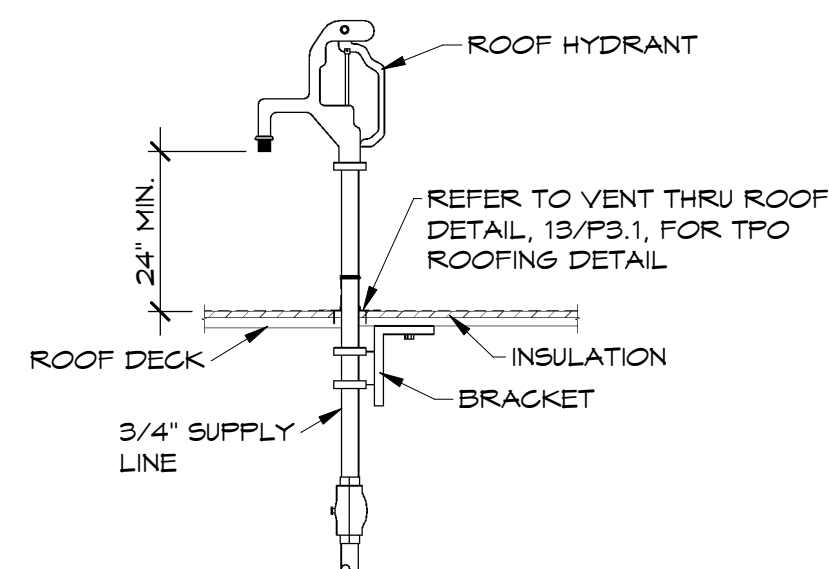
As-Built
CSUSA
8/8/2024
MA

A NEW OFFICE FOR
FARM CREDIT
RUSSELLVILLE, ARKANSAS

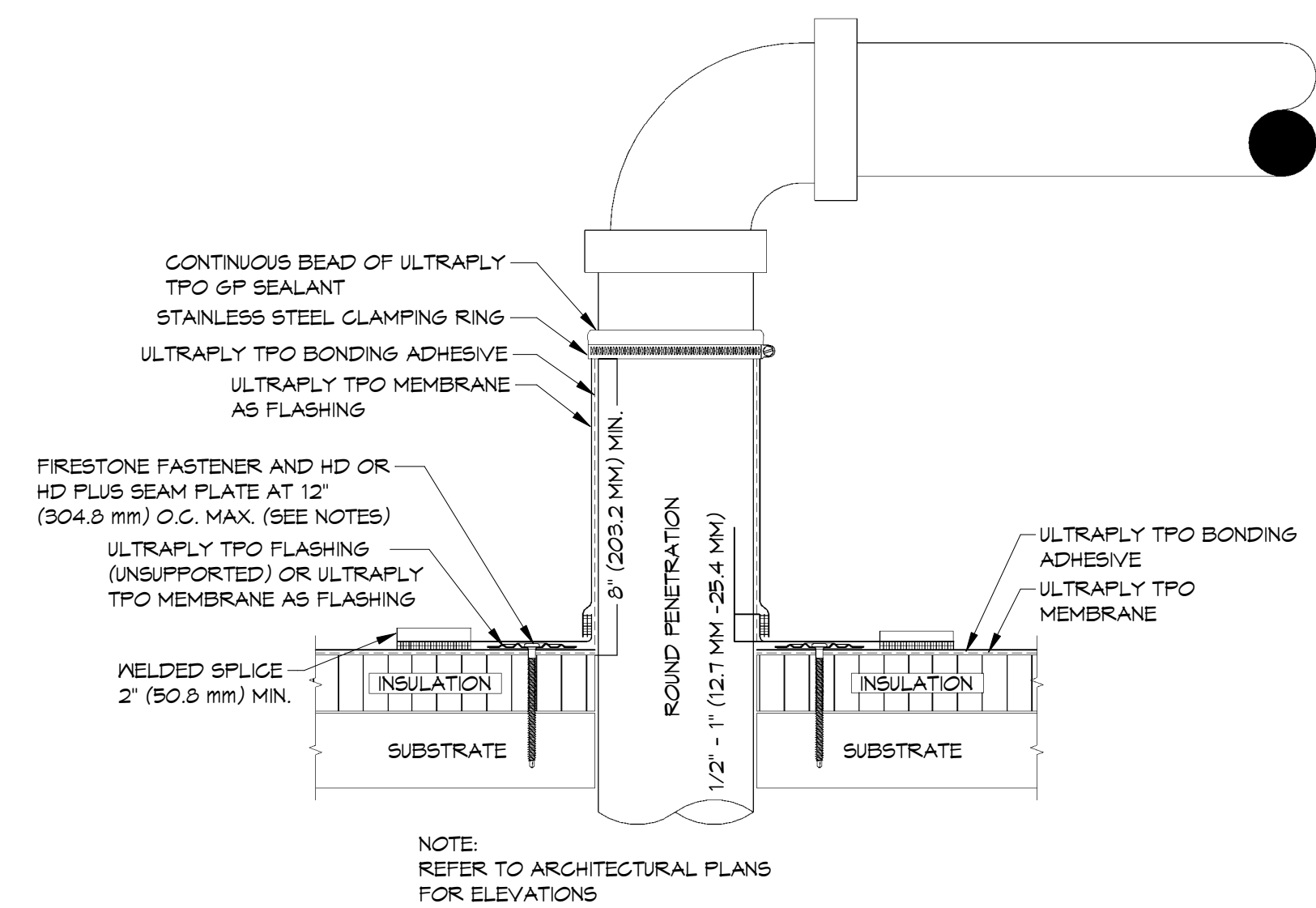
DRAWN BY:
AH
CHECK BY:
NEW
ISSUE DATE:
01/25/2023
PROJECT NO:
2223
REVISION DATES:
2/20/2023
PLUMBING DETAILS
SHEET
P3.2
COPYRIGHT 2023
THESE DRAWINGS AND SPECIFICATIONS ARE THE EXCLUSIVE PROPERTY OF HIGHT JACKSON ASSOCIATES P.A. USE OR REPRODUCTION IS PROHIBITED WITHOUT WRITTEN CONSENT.
HSA JOB # 22-166



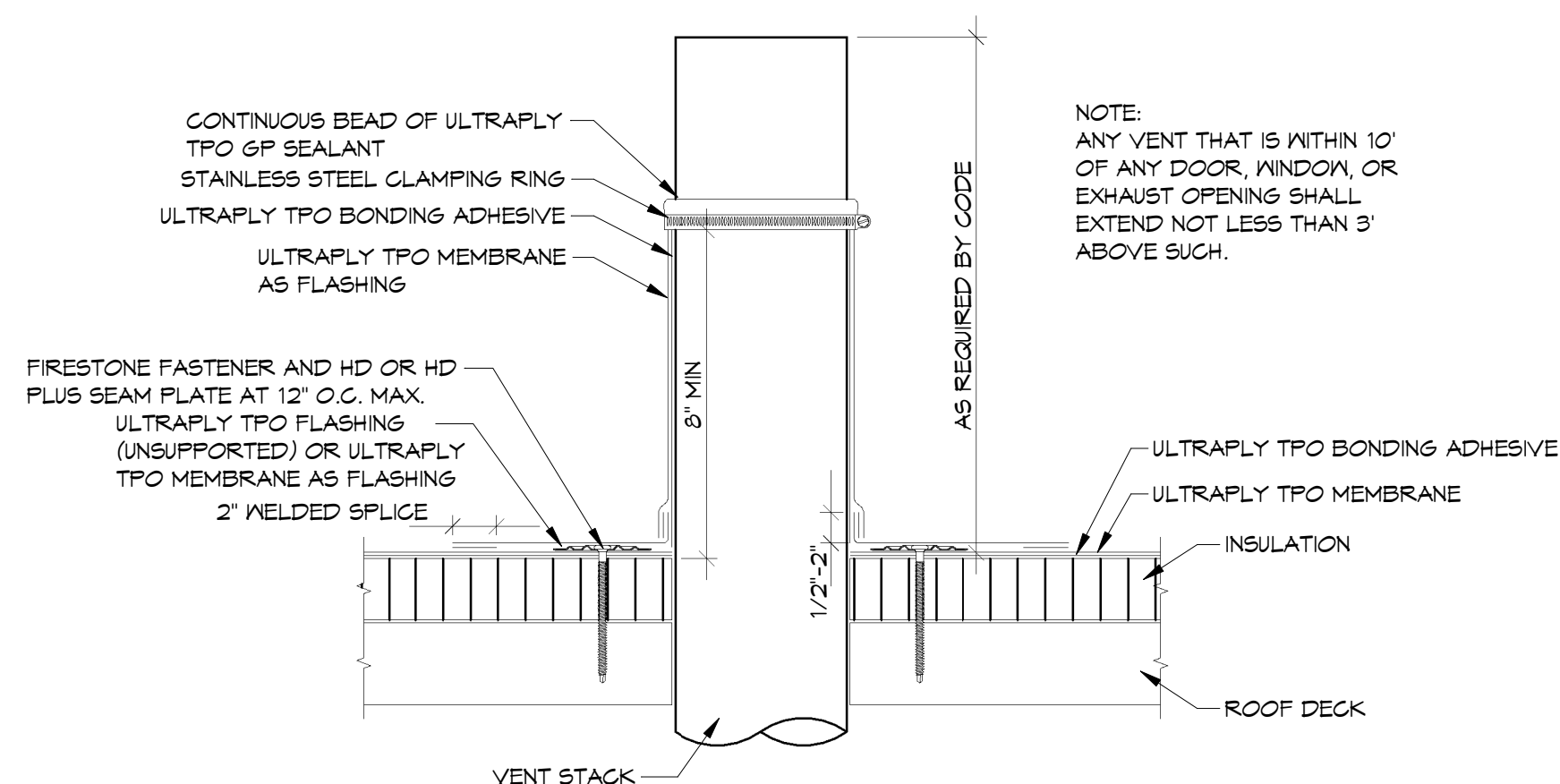
1 ROOF DRAIN DETAIL
NTS



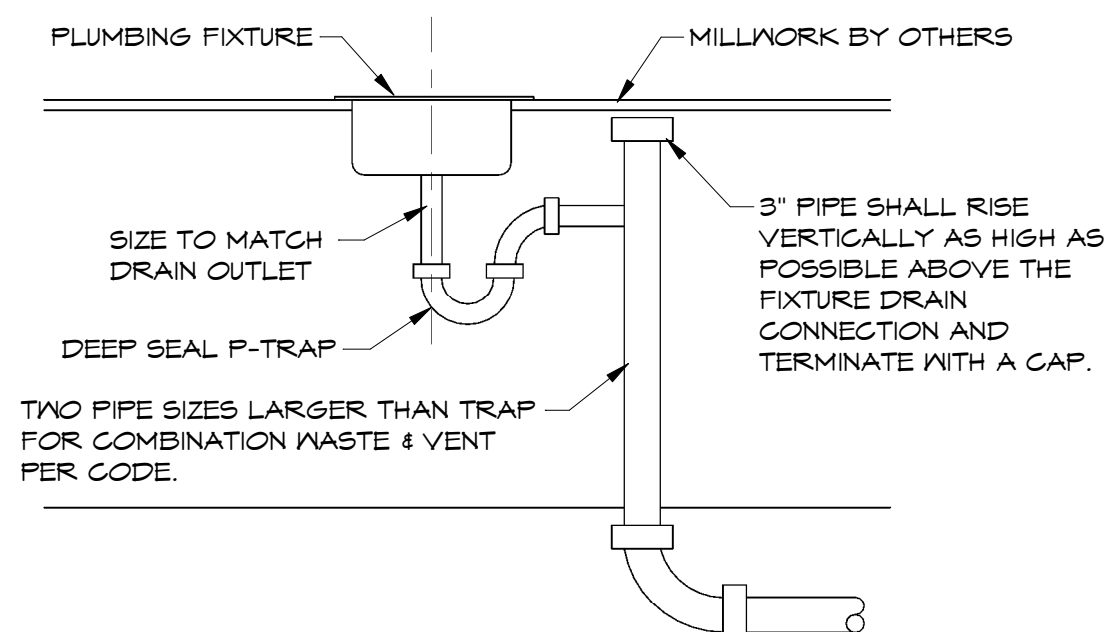
2 ROOF HYDRANT DETAIL
NTS



3 PIPE ROOF PENETRATION DETAIL
NTS




4 VTR DETAIL
NTS



5 ISLAND SINK DETAIL
NTS

NOTES:
RE: P1.1 FOR PLUMBING LEGEND, GENERAL
AND KEYED NOTES. RE: P3.1 FOR PLUMBING
SCHEDULES.



HSAEngineering
479 / 452 / 8922 office
7405 Ellis St.
Fort Smith, AR 72916
HSAConsultants.com

HSA JOB # 22-166



Hight Jackson
ASSOCIATES
5201 W Village Parkway, Suite 300i Rogers, Arkansas 72768 | (479) 464-4965 | www.hjarch.com

As-Built
CSUSA
8/8/2024
MA

A NEW OFFICE FOR
FARM CREDIT
RUSSELLVILLE, ARKANSAS

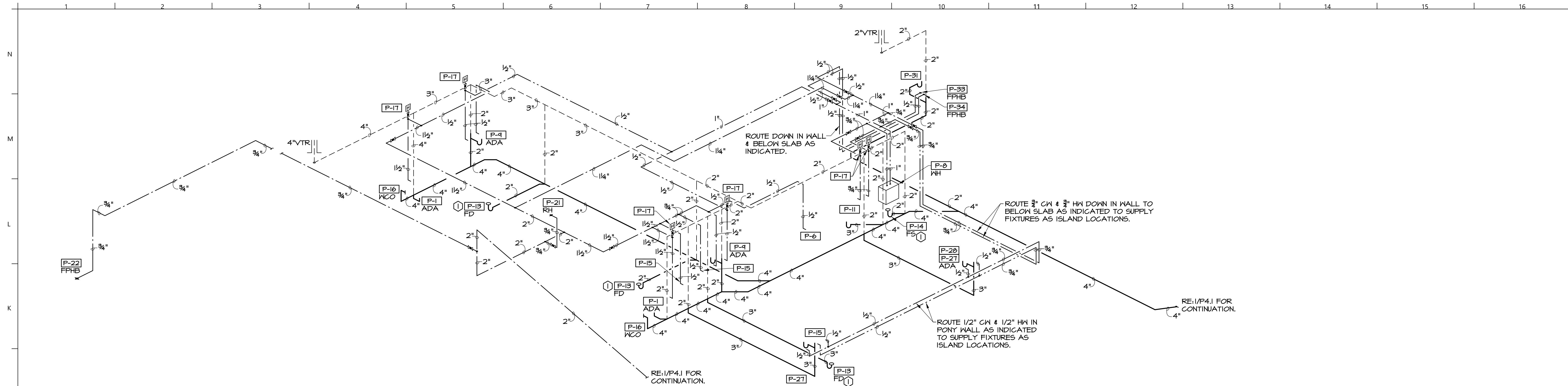
DRAWN BY:
AH
CHECK BY:
NEW
ISSUE DATE:
01/25/2023

PROJECT NO:
2223

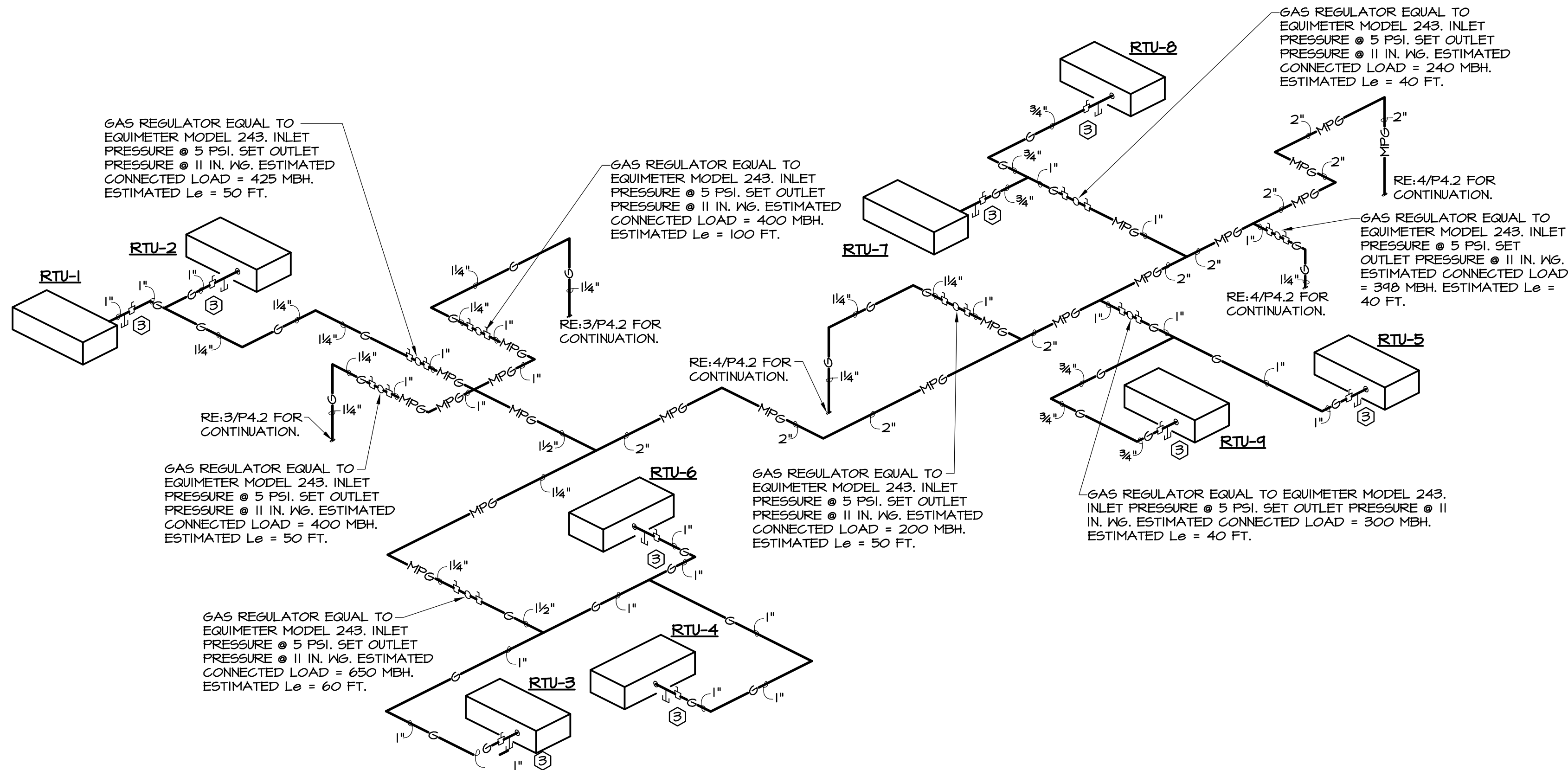
REVISION DATES:
2/20/2023

PLUMBING DETAILS
SHEET
P3.3

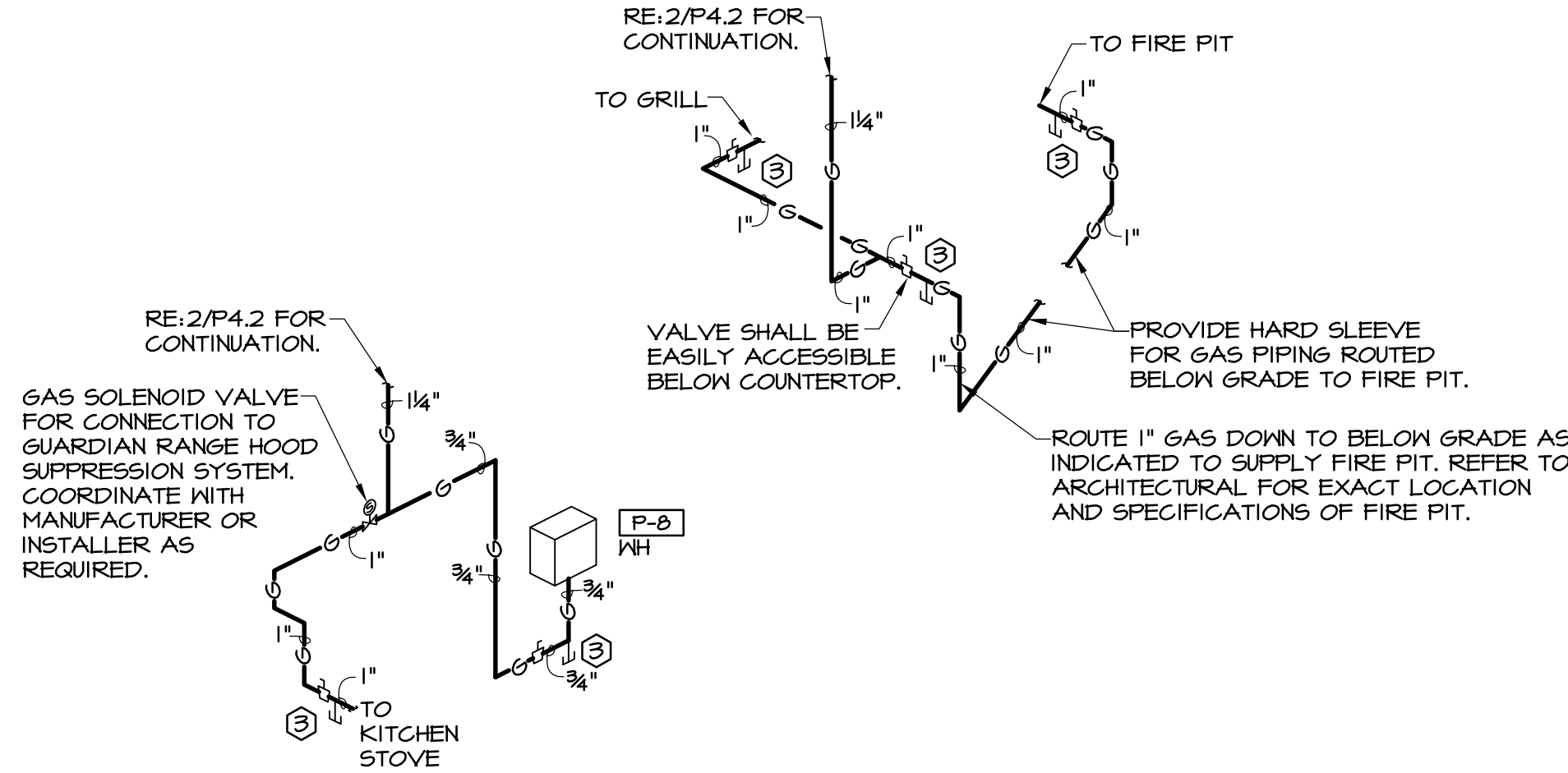
COPYRIGHT 2023
THESE DRAWINGS AND SPECIFICATIONS ARE
THE EXCLUSIVE PROPERTY OF
HIGHT JACKSON ASSOCIATES P.A.
USE OR REPRODUCTION IS PROHIBITED
WITHOUT WRITTEN CONSENT



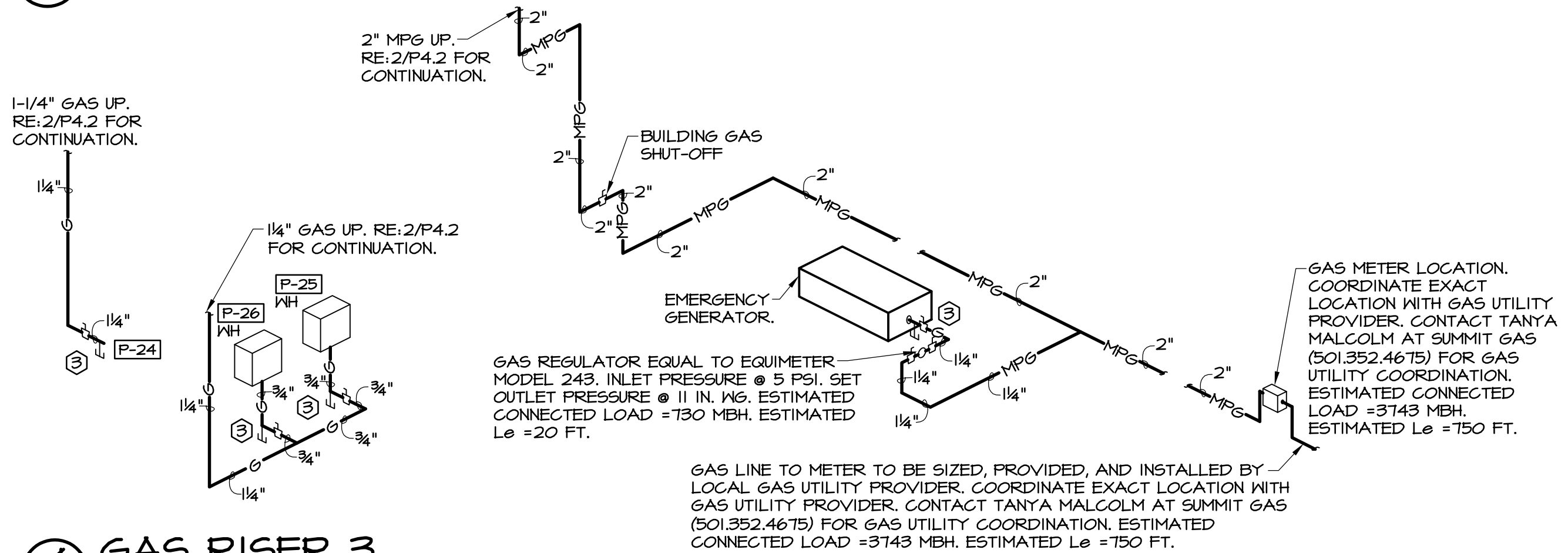
① RISER 2
N.T.S.



② GAS RISER 1
N.T.S.



③ GAS RISER 2
N.T.S.



④ GAS RISER 3
N.T.S.

RE: P1.1 FOR GENERAL PLUMBING NOTES, KEYED NOTES, AND PLUMBING LEGEND. RE: P3.1 & P3.2 FOR PLUMBING DETAILS. RE: P5.1 FOR PLUMBING FIXTURE SCHEDULES.

HSAEngineering
479 / 452 / 8922 office
7405 Ellis St.
Fort Smith, AR 72916
HSAConsultants.com

Hight Jackson
ASSOCIATES

5201 W Village Parkway, Suite 300 | Rogers, Arkansas 72758 | (479) 464-4965 | www.hjarch.com

As-Built
CSUSA
8/8/2024
MA

A NEW OFFICE FOR
FARM CREDIT
RUSSELLVILLE, ARKANSAS

DRAWN BY:
BS

CHECK BY:
NEW

ISSUE DATE
01/25/2023

PROJECT NO.
027-084

REVISION DATES
2/20/2023

PLUMBING
RISERS

SHEET

P4.2

COPYRIGHT 2023
THESE DRAWINGS AND SPECIFICATIONS ARE
THE EXCLUSIVE PROPERTY OF
HIGHT JACKSON ASSOCIATES, P.A.
USE OR REPRODUCTION IS PROHIBITED
WITHOUT WRITTEN CONSENT

HSA JOB # 22-166

PLUMBING FIXTURE SCHEDULE									
MARK	FIXTURE	MANUFACTURER	MODEL	MOUNT	CONNECTION			REMARKS / ACCESSORIES	
					CN	HN	SS		
P-1	ACCESSIBLE WATER CLOSET	AMERICAN STANDARD	3043.102	FLOOR	1-1/2	-	4	WHITE VITREOUS CHINA, LOW CONSUMPTION, ELONGATED BOWL, FLUSH VALVE TOILET. PROVIDE SLOAN MODEL SLOAN #111-DFB FLUSH VALVE, OLSONITE #10 SCC OPEN SEAT AND SLOAN YJ TYPE PIPE SUPPORT. PROVIDE BLOCKING IN WALL AS REQUIRED FOR INSTALLATION OF YJ PIPE SUPPORT. INSTALL 17 IN. A.F.F. TO TOP OF SEAT TO FLOOR.	
P-2	WATER CLOSET	AMERICAN STANDARD	2234.001	FLOOR	1-1/2	-	4	WHITE VITREOUS CHINA, LOW CONSUMPTION, ELONGATED BOWL, FLUSH VALVE TOILET. PROVIDE SLOAN MODEL SLOAN #111-DFB FLUSH VALVE, OLSONITE #10 SCC OPEN SEAT AND SLOAN YJ PIPE SUPPORT. PROVIDE BLOCKING IN WALL AS REQUIRED FOR INSTALLATION OF YJ PIPE SUPPORT.	
P-3	ACCESSIBLE URINAL	AMERICAN STANDARD	6550.001	WALL	3/4	-	2	WHITE VITREOUS CHINA, LOW CONSUMPTION URINAL. PROVIDE SLOAN MODEL SLOAN #186-DFB FLUSH VALVE, WADE #400 WALL CARRIER AND SLOAN YJ PIPE SUPPORT. PROVIDE BLOCKING IN WALL AS REQUIRED FOR INSTALLATION OF YJ PIPE SUPPORT. INSTALL 17 IN. A.F.F. TO TOP OF LIP.	
P-4	URINAL	AMERICAN STANDARD	6550.001	WALL	3/4	-	2	WHITE VITREOUS CHINA, LOW CONSUMPTION URINAL. PROVIDE SLOAN MODEL SLOAN #186-DFB FLUSH VALVE, WADE #400 WALL CARRIER AND SLOAN YJ PIPE SUPPORT. PROVIDE BLOCKING IN WALL AS REQUIRED FOR INSTALLATION OF YJ PIPE SUPPORT. INSTALL 24 IN. A.F.F. TO TOP OF LIP.	
P-5	ACCESSIBLE LAVATORY	KOHLER	LADENA SERIES K-2215	COUNTER	1/2	1/2	1-1/2	WHITE VITREOUS CHINA UNDERMOUNT LAVATORY WITH OVERFLOW DRAIN. PROVIDE KOHLER LOURE SERIES MODEL K-1031.76-SANL 0.5 GPM SENSOR OPERATED FAUCET WITH GRID DRAIN, CONTROL BOX ASSEMBLY, MOUNTING HARDWARE, HANDILAY MOLDED DRAIN & SUPPLY INSULATION KIT. MOUNT 34 IN. A.F.F. TO TOP OF RIM. PROVIDE WATTS LFMMV THERMOSTATIC MIXING VALVE. SET WATER TEMPERATURE AT 105 DEGREES F.	
P-6	COFFEE WALL BOX	GUY GRAY	BM875	UNDER COUNTER	1/2	-	-	WALL MOUNTED ICE MAKER HOOKUP WITH ANGLE VALVE. MOUNT IN MILLWORK, BELOW COUNTER.	
P-7	ACCESSIBLE SINGLE STAINLESS STEEL SINK	KOHLER	VAULT SERIES MODEL K-3844	COUNTER	1/2	1/2	1-1/2	SINGLE COMPARTMENT UNDERMOUNT STAINLESS STEEL SINK (22.25 X 16-9/16 X 6 I.D.). PROVIDE KOHLER K-7506 FAUCET & KOHLER DUOSTRAINER DRAIN WITH BASKET STRAINER. PROVIDE WITH MANUFACTURER'S INSTALLATION TEMPLATE AND UNDERMOUNT KIT. PROVIDE WATTS LFMMV THERMOSTATIC MIXING VALVE. SET WATER TEMPERATURE AT 105 DEGREES F.	
P-8	TANKLESS WATER HEATER	TAKAGI	T-H3-DV-N	WALL	3/4	3/4	-	TANKLESS GAS WATER HEATER, 5.4 GPM AT 10 DEGREE F RISE. 95% EFFICIENT WATER HEATER. 194 MBH INPUT. PROVIDE PVC VENT SYSTEM, DRAIN KIT AND MANUFACTURER'S DRAIN PAN AND SERVICE VALVE KIT. SET WATER TEMPERATURE TO 125 DEGREES F.	
P-9	ACCESSIBLE LAVATORY	AMERICAN STANDARD	0356.041	WALL	1/2	1/2	1-1/4	WHITE VITREOUS CHINA LAVATORY WITH FAUCET LEDGE, SINGLE CENTER FAUCET HOLE, AND BACK SPLASH. PROVIDE KOHLER LOURE SERIES MODEL K-1031.76-SANL 0.5 GPM SENSOR OPERATED FAUCET WITH GRID DRAIN, CONTROL BOX ASSEMBLY, MOUNTING HARDWARE, HANDILAY MOLDED DRAIN & SUPPLY INSULATION KIT. MOUNT 34 IN. A.F.F. TO TOP OF RIM. PROVIDE WATTS LFMMV THERMOSTATIC MIXING VALVE. SET WATER TEMPERATURE AT 105 DEGREES F. PROVIDE WADE #520 WALL CARRIER. MOUNT 34 IN. A.F.F. TO TOP OF RIM. PROVIDE HARDWIRED TRANSFORMER.	
P-10	ACCESSIBLE DRINKING FOUNTAIN WITH BOTTLE FILLER	ELKAY	EZSTL8VSLK	WALL	1/2	-	1-1/2	WALL MOUNTED, H-I/O SPLIT LEVEL, BARRIER FREE ELECTRIC WATER COOLER, WITH BOTTLE FILLING UNIT; 8.0 GPH AT ARI STANDARDS, 115 VOLT, SINGLE PHASE, 1/4 HP, 4.0 FULL LOAD AMPS. COORDINATE LOCATION OF ELECTRICAL OUTLET WITH ELECTRICAL CONT. MOUNT LOW SPOUT 36 IN. A.F.F. TO TOP OF SPOUT. MOUNT HI SPOUT 40 IN. A.F.F. TO TOP OF SPOUT UNLESS NOTED OTHERWISE. RE: TO ARCHITECTURAL SHEETS FOR SPECIFIC MOUNTING HEIGHTS.	
P-11	SERVICE SINK	FIAT	T6B-100	FLOOR	3/4	3/4	3	TERRAZZO 24X24X12 SERVICE SINK. PROVIDE T6 BRASS B-0665-B5TP CHROME PLATED FAUCET WITH INTEGRAL SERVICE STOPS, ETEMA CARTRIDGES WITH SPRING CHECKS, TOP BRACE, AND B-0463 VACUUM BREAKER, FIAT #832-AA HOSE AND BRACKET, 3 IN. GRID DRAIN AND STRAINER, 3 MOP HOLDER, AND TWO STAINLESS STEEL WALL GUARDS. MOUNT MOP HOLDER AT 60 IN. A.F.F.	
P-12	ACCESSIBLE SHOWER	AQUARIUS	S4136BF	FLOOR	1/2	1/2	2	WHITE PREMOLDED ACRYLIC CLOSED TOP ADA COMPLIANT SHOWER. PROVIDE WITH FACTORY INSTALLED STANDARD SYMCONS VALVE PACKAGE WITH PRESSURE BALANCED SINGLE LEVER MIXING VALVE WITH STOP CHROME PLATED BRASS HAND HELD SHOWER HEAD WITH SWIVEL FITTING AND SLIDE BAR, VACUUM BREAKER AND 60" FLEXIBLE HOSE, AND FOLDING SEAT. REFER TO ARCHITECTURAL PLANS FOR SEAT LOCATION. PROVIDE WITH FACTORY INSTALLED 271 VOLT LIGHT AND CURTAIN ROD WITH HEAVY DUTY WEIGHTED VINYL CURTAIN. MOUNT GRAB BAR AT A MAXIMUM OF 36 IN. A.F.F. MOUNT SHOWER CONTROL VALVES AT A MAXIMUM OF 48 IN. A.F.F. MOUNT FOLDING SEAT A MAXIMUM OF 18 IN. A.F.F. PROVIDE WITH 2 IN. BF THRESHOLD AND RECESSED RECEIVER FLANGE ON SIDES AND TOP.	
P-13	FLOOR DRAIN	WADE	1100	FLOOR	-	-	*	*CAST IRON FLOOR DRAIN, SIZE AS INDICATED ON PLANS OR MATCH INDICATED WASTE LINE. PROVIDE DEEP SEAL TRAP. COORDINATE DRAIN TOP MATERIAL WITH SPECIFIED FLOOR FINISH.	
P-14	FLOOR SINK	WADE	9110	FLOOR	-	-	*	*CAST IRON FLOOR SINK WITH NICKEL BRONZE GRATE. SIZE AS INDICATED ON PLANS OR MATCH WASTE LINE SIZE WHEN NOT INDICATED. PROVIDE 3/4" GRATE AND DEEP SEAL TRAP.	
P-15	ICE MAKER WALL BOX	GUY GRAY	BM875	WALL	1/2	-	-	*WALL MOUNTED ICE MAKER HOOK UP WITH ANGLE VALVE.	
P-16	WALL CLEAN OUT	WADE	9550-R	WALL	-	-	-	*SIZE TO MATCH WASTE LINE, MAXIMUM TO 4 INCHES. PROVIDE WADE 8304 STAINLESS STEEL WALL ACCESS COVER.	
P-17	WATER HAMMER ARRESTOR	WADE BELLOWS	SHOKSTOP	-	*	-	-	*SIZE WATER HAMMER ARRESTOR PER MANUFACTURER'S RECOMMENDATIONS. ALL STAINLESS STEEL CONSTRUCTION WITH WELDED NESTED BELLOWS. PROVIDE BALL VALVE FOR SHUT-OFF.	
P-18	ROOF DRAIN	WADE	3000-AE-53	ROOF	-	-	-	*SIZE AS INDICATED ON PLANS. CAST IRON ROOF DRAIN WITH FLASHING RING, FLANGE, GRAVEL STOP, CAST IRON DOME, UNDER DECK CLAMP, ADJUSTABLE EXTENSION AND VANDAL PROOF SCREWS.	
P-19	OVERFLOW DRAIN	WADE	3000-AE-53	ROOF	-	-	-	*SIZE AS INDICATED ON PLANS. CAST IRON ROOF DRAIN WITH FLASHING RING, FLANGE, GRAVEL STOP, CAST IRON DOME, UNDER DECK CLAMP, ADJUSTABLE EXTENSION AND VANDAL PROOF SCREWS.	
P-20	OVERFLOW NOZZLE	WADE	3940-166	WALL	-	-	*	*SIZE TO MATCH OVERFLOW DRAIN PIPING. CAST BRONZE DOWNSPOUT NOZZLE WITH INLET AND FLANGE TO SECURE NOZZLE TO WALL. FASTENING HARDWARE TO MATCH NOZZLE. MOUNT 12" A.F.F. PROVIDE WITH BIRD SCREEN WITH MATCHING FINISH.	
P-21	ROOF HYDRANT	WOODFORD	SRH-M5	ROOF	3/4	-	*	*AUTOMATIC DRAINING, BACKFLOW PROTECTED, FREEZE PROOF ROOF HYDRANT.	
P-22	FREEZE PROOF HOSE BIBB	WOODFORD	B6T	WALL	3/4	-	-	*FREEZE PROOF HOSE BIBB IN LOCKING BOX. PROVIDE VACUUM BREAKER AND BACKFLOW PREVENTION.	
P-23	CLEAN OUT TO GRADE	WADE	6000Z	-	-	-	-	*SIZE TO MATCH WASTE LINE MAXIMUM TO 4 INCHES. PROVIDE HEAVY DUTY TRACTOR TYPE COVER.	
P-24	GAS FIRED FIREPLACE SUPPLY	-	-	WALL	-	-	-	VALVE AND DIRT LEG FOR GAS SUPPLY TO FIREPLACE.	
P-25	TANKLESS WATER HEATER	TAKAGI	T-H3-DV-N	WALL	3/4	3/4	-	TANKLESS GAS WATER HEATER, 5.4 GPM AT 10 DEGREE F RISE. 95% EFFICIENT WATER HEATER. 194 MBH INPUT. PROVIDE PVC VENT SYSTEM, DRAIN KIT AND MANUFACTURER'S DRAIN PAN AND SERVICE VALVE KIT. SET WATER TEMPERATURE TO 125 DEGREES F.	
P-26	TANKLESS WATER HEATER	TAKAGI	T-H3-DV-N	WALL	3/4	3/4	-	TANKLESS GAS WATER HEATER, 5.4 GPM AT 10 DEGREE F RISE. 95% EFFICIENT WATER HEATER. 194 MBH INPUT. PROVIDE PVC VENT SYSTEM, DRAIN KIT AND MANUFACTURER'S DRAIN PAN AND SERVICE VALVE KIT. SET WATER TEMPERATURE TO 125 DEGREES F.	
P-27	DOUBLE STAINLESS STEEL SINK	KOHLER	VAULT SERIES K-25940	COUNTER	1/2	1/2	2	DOUBLE COMPARTMENT UNDERMOUNT STAINLESS STEEL SINK (16-9/16 X 14-9/16 X 5-1/2 I.D. EA.). PROVIDE KOHLER K-7506 FAUCET, KOHLER K-6641 STAINLESS STEEL SINK RACKS (QTY 2), KOHLER K-8749 SINK DRAIN AND STRAINER BASKETS (QTY 2). PROVIDE WITH MANUFACTURER'S INSTALLATION TEMPLATES AND MOUNTING KIT. PROVIDE WATTS LFMMV THERMOSTATIC MIXING VALVE. SET WATER TEMPERATURE TO 105 DEGREES F.	
P-28	GARBAGE DISPOSER	IN-SINK-ERATOR	BADGER 5	UNDER COUNTER	-	-	1-1/2	1/2 HP GARBAGE DISPOSAL. PROVIDE ELECTRICAL CORD. COORDINATE INSTALLATION IN MILLWORK.	
P-29	DISHWASHER	OWNER PROVIDED	-	UNDER COUNTER	-	3/8	1-1/2	MECHANICAL CONTRACTOR TO PROVIDE ALL MATERIALS REQUIRED FOR FINAL CONNECTIONS.	
P-30	DOWNSPOUT BOOT	-	-	WALL	-	-	*	PROVIDE PVC BELL REDUCER WITH CAP. SIZE BELL REDUCER AS REQUIRED TO FIT DOWNSPOUT. CUT CAP TO MATCH SIZE OF DOWNSPOUT.	
P-31	SINGLE STAINLESS STEEL SINK	KOHLER	UNDERTONE SERIES MODEL K-3925-NA	COUNTER	1/2	1/2	2	SINGLE COMPARTMENT UNDERMOUNT STAINLESS STEEL SINK (21-1/4 X 15-3/4 X 9-1/2 I.D.). PROVIDE KOHLER K-7506 FAUCET & KOHLER DUOSTRAINER DRAIN WITH BASKET STRAINER. PROVIDE WITH MANUFACTURER'S INSTALLATION TEMPLATE AND UNDERMOUNT KIT. PROVIDE WATTS LFMMV THERMOSTATIC MIXING VALVE. SET WATER TEMPERATURE AT 105 DEGREES F.	
P-32	ACCESSIBLE DRINKING FOUNTAIN WITH BOTTLE FILLER	ELKAY	EZS8VSLK	WALL	1/2	-	2	WALL MOUNTED BARRIER FREE ELECTRIC WATER COOLER, WITH BOTTLE FILLING UNIT; 8.0 GPH AT ARI STANDARDS, 115 VOLT, SINGLE PHASE, 1/4 HP, 4.0 FULL LOAD AMPS. COORDINATE LOCATION OF ELECTRICAL OUTLET WITH ELECTRICAL CONTRACTOR. FIXTURE MUST BE ADA ACCESSIBLE.	
P-33	COLD WATER FREEZE PROOF HOSE BIB	WOODFORD	25	WALL	3/4	-	-	FREEZELESS WALL FAUCET WITH 3/4" MALE HOSE THREAD AND METAL HANDLE. PROVIDE VACUUM BREAKER AND BACKFLOW PREVENTION.	
P-34	HOT WATER FREEZE PROOF HOSE BIB	WOODFORD	25	WALL	-	3/4	-	FREEZELESS WALL FAUCET WITH 3/4" MALE HOSE THREAD AND METAL HANDLE. PROVIDE VACUUM BREAKER AND BACKFLOW PREVENTION.	

CIRCULATING PUMP SCHEDULE							
MARK	MFG	MODEL	GPM	HEAD (FT)	VLT / PH / HZ	WATTS	REMARKS/ACCESSORIES
CP-1	BELL & GOSSETT	NFB-36	12	20	115 / 1 / 60	270	1, 2, 3, 4

ACCESSORIES

1. BRONZE CONSTRUCTION FOR HOT WATER RECIRCULATION.
2. PROVIDE AQUASTAT.
3. PLUMBING CONTRACTOR TO PROVIDE TC-1 AUTOMATIC TIMER.
4. PROVIDE 3 SPEED MOTOR.

EFFLUENT PUMP SCHEDULE							
MARK	MFG	MODEL	GPM	HEAD (FT)	VL T / PH / HZ	HP	REMARKS/ACCESSORIES
EP-1	LIBERTY	290	46	28	120 / 1 / 60	3/4	1, 2, 3, 4, 5, 6
EP-2	LIBERTY	290	46	28	120 / 1 / 60	3/4	1, 2, 3, 4, 5, 6

ACCESSORIES

1. PROVIDE CHECK VALVES.
2. PROVIDE TWO (2) EFFLUENT PUMPS.
3. PROVIDE AE24H-3 DUPLEX ALTERNATING CONTROL PANEL. PUMPS TO OPERATE IN PRIMARY/STAND-BY OPERATION.
4. PROVIDE FOUR (4) FLOATS. (PUMP ON, PUMP OFF, AND HIGH WATER ALARM.)
5. PROVIDE POWER CABLE FROM PUMPS TO CONTROL PANEL.
6. EXACT SPECIFICATIONS OF SEPTIC TANK SYSTEM SHALL BE VERIFIED WITH LICENSED SEPTIC DESIGNER PRIOR TO CONSTRUCTION.

NOTES:
RE:P1.1 FOR PLUMBING LEGEND, GENERAL AND
KEYED NOTES. RE:P3.1 FOR PLUMBING DETAILS.



HSAEngineering
479 / 452 / 8922 office
7405 Ellis St.
Fort Smith, AR 72916
HSAConsultants.com



Hight Jackson
ASSOCIATES
5201 W Village Parkway, Suite 300 | Rogers, Arkansas 72758 | (479) 464-9855 | www.hjarch.com

As-Built
CSUSA
8/8/2024
MA

A NEW OFFICE FOR
FARM CREDIT
RUSSELLVILLE, ARKANSAS

DRAWN BY:
AH

CHECK BY:
NEW

ISSUE DATE
01/25/2023

PROJECT NO.
2223

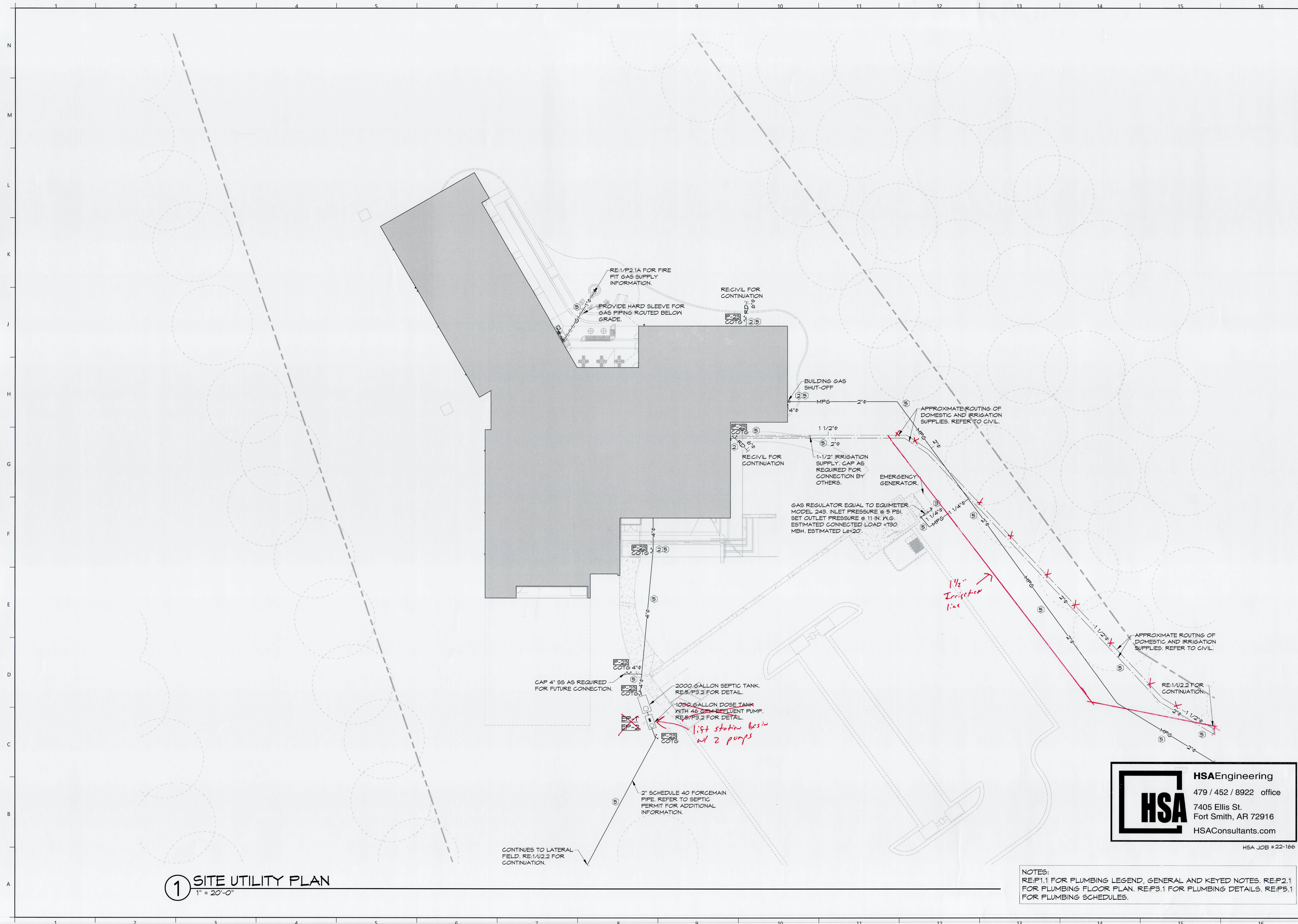
REVISION DATES
1/20/2023

PLUMBING SCHEDULES

S H E E T

P5.1

COPYRIGHT 2023
THESE DRAWINGS AND SPECIFICATIONS ARE
THE EXCLUSIVE PROPERTY OF
HIGHT JACKSON ASSOCIATES, P.A.
USE OR REPRODUCTION IS PROHIBITED
WITHOUT WRITTEN CONSENT



1 SITE UTILITY PLAN
1" = 20'-0"

NOTES:
RE:P1.1 FOR PLUMBING LEGEND, GENERAL AND KEYED NOTES. RE:P2.1 FOR PLUMBING FLOOR PLAN. RE:P3.1 FOR PLUMBING DETAILS. RE:P5.1 FOR PLUMBING SCHEDULES.



Hight Jackson
ASSOCIATES
5201 W Village Parkway, Suite 300 | Rogers, Arkansas 72758 | (479) 464-4965 | www.hjarch.com

As-Built
CSUSA
8/8/2024
MA

A NEW OFFICE FOR
FARM CREDIT
RUSSELLVILLE, ARKANSAS

DRAWN BY:
AH
CHECK BY:
NEW
ISSUE DATE:
01/25/2023

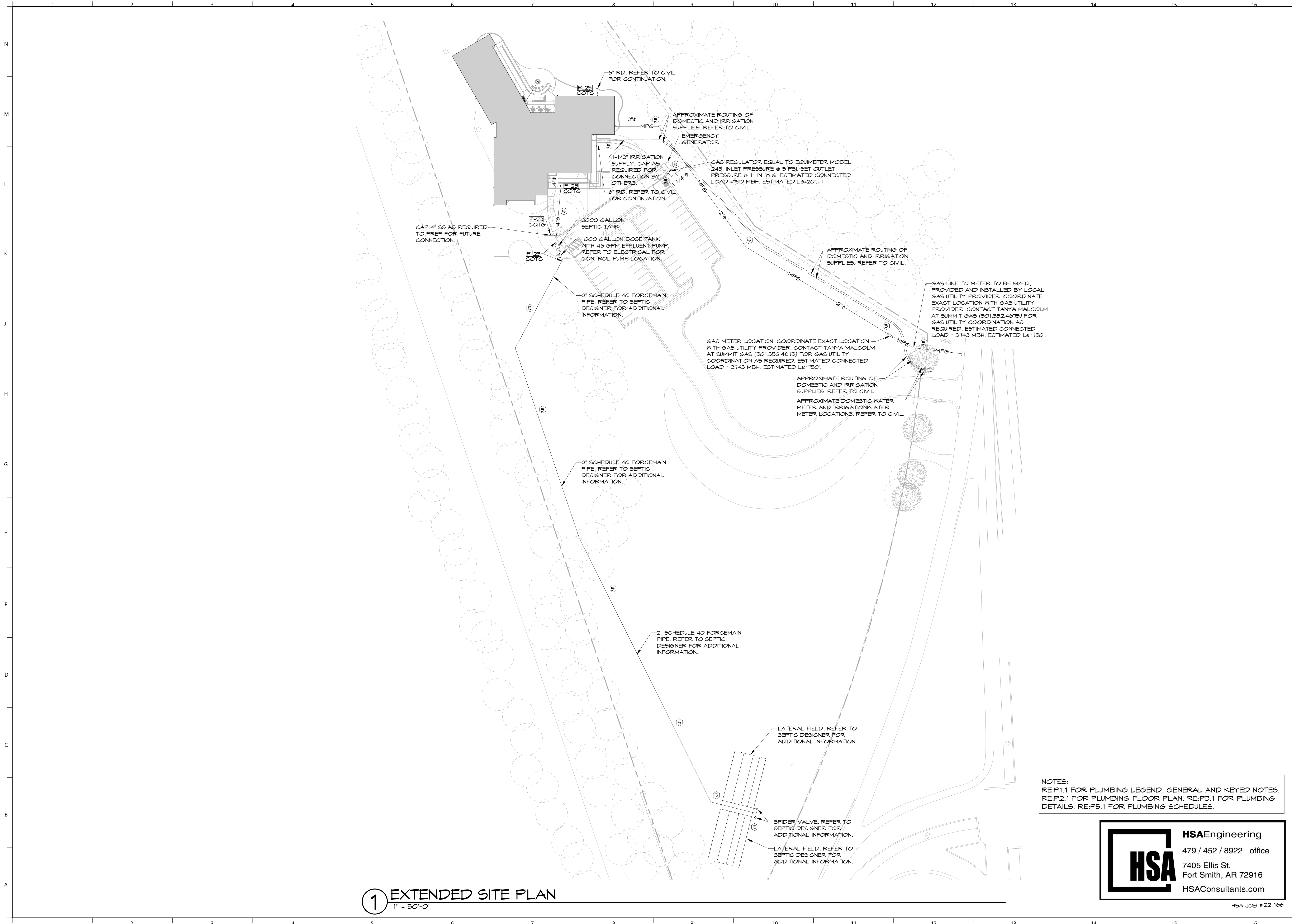
PROJECT NO:
2223
REVISION DATES:
2/20/2023



HSAEngineering
479 / 452 / 8922 office
7405 Ellis St.
Fort Smith, AR 72916
HSAConsultants.com

HSA JOB #22-166

SITE UTILITY PLAN
SHEET
U2.1
COPYRIGHT 2023
THESE DRAWINGS AND SPECIFICATIONS ARE THE EXCLUSIVE PROPERTY OF HIGHT JACKSON ASSOCIATES, P.A. USE OR REPRODUCTION IS PROHIBITED WITHOUT WRITTEN CONSENT




1 EXTENDED SITE PLAN
1" = 50'-0"

NOTES:
RE:P1.1 FOR PLUMBING LEGEND, GENERAL AND KEYED NOTES.
RE:P2.1 FOR PLUMBING FLOOR PLAN. RE:P3.1 FOR PLUMBING DETAILS. RE:P3.1 FOR PLUMBING SCHEDULES.



HSAEngineering
479 / 452 / 8922 office
7405 Ellis St.
Fort Smith, AR 72916
HSAConsultants.com

HSA JOB # 22-166



Hight Jackson
ASSOCIATES
5201 W Village Parkway, Suite 300 | Rogers, Arkansas 72768 | (479) 464-4965 | www.hjarch.com

As-Built
CSUSA
8/8/2024
MA

A NEW OFFICE FOR

FARM CREDIT

RUSSELLVILLE, ARKANSAS

DRAWN BY:
AH

CHECK BY:
NEW

ISSUE DATE:
01/25/2023

PROJECT NO:
2223

REVISION DATES:
2/20/2023

EXTENDED SITE PLAN

SHEET

U2.2

COPYRIGHT 2023
THESE DRAWINGS AND SPECIFICATIONS ARE
THE EXCLUSIVE PROPERTY OF
HIGHT JACKSON ASSOCIATES P.A.
USE OR REPRODUCTION IS PROHIBITED
WITHOUT WRITTEN CONSENT