

GENERAL PLUMB. DEMO. NOTES

- FIELD VERIFY EXISTING PLUMBING FIXTURE LOCATIONS, TYPE ETC- VERIFY EXISTING PLUMBING PIPING LOCATIONS, SIZES, ETC.
- CUT WALLS, FLOORS OR CEILINGS AS REQUIRED TO INSTALL NEW PIPING. ALL FURRING AND REPAIRING SHALL BE BY THE GENERAL CONTRACTOR. COORDINATE REQUIREMENTS WITH THE GENERAL CONTRACTOR.
- REWORK EXISTING WATER, SANITARY, ACID WASTE, AND VENT PIPING AS REQUIRED TO INSTALL NEW PLUMBING FIXTURES.
- WHERE EXISTING FIXTURES AND EQUIPMENT ARE REMOVED AND NOT REPLACED, CAP ALL PIPING WITHIN WALLS, FLOORS OR CEILINGS ARE REQUIRED FOR CONCEALMENT.
- REMOVE ALL EXPOSED EXISTING PIPING WHICH IS DEEMED INOPERABLE AS A RESULT OF THIS CONTRACT UNLESS SHOWN OR NOTED OTHERWISE.
- EXISTING PIPE, TO WHICH NEW PIPE IS CONNECTED, SHALL BE RODDED, FLUSHED AND CLEANED FROM POINT OF CONNECTION TO MAIN OUTSIDE BUILDING.
- EXISTING FLOOR DRAINS WITHIN SCOPE OF CONSTRUCTION SHALL BE THOROUGHLY CLEANED AND BUFFED. EXISTING PIPING SHALL BE RODDED AND CLEANED TO THE POINT OF CONNECTION TO THE MAIN.
- ALL PLUMBING FIXTURES, VALVES, PIPING, AND EQUIPMENT WHICH ARE TO BE REMOVED AND NOT RELOCATED SHALL BECOME THE PROPERTY OF THE OWNER AND DELIVERED TO STORAGE ON SITE AS DIRECTED BY THE OWNER.

PLUMBING GENERAL NOTES

- THE CONTRACTOR SHALL, PRIOR TO THE START OF ANY WORK UNDER THIS CONTRACT, JOB SITE VERIFY SIZE, LOCATION, ETC. OF ANY EXISTING PIPING NOTED, SHOWN OR IMPLIED, TO WHICH NEW PIPING IS RELATED OR CONNECTED.
- HOT AND COLD WATER SUPPLIES TO FIXTURES SHALL BE AS FOLLOWS, UNLESS SHOWN OR NOTED OTHERWISE.

WATER CLOSET	1"
URINAL	1"
LAVATORY	1/2"
SERVICE SINK	3/4"
ELECTRIC WATER COOLER	1/2"
SINK	1/2"
SHOWER	1/2"
FREEZE-PROOF WALL HYDRANT	3/4"
CLINICAL SINK	1-1/4" & 1/2"
ICE MACHINE	1/2"
SUPPLY AND DRAIN UNIT (WASHER BOX)	1/2"
HOSE BIBB	3/4"
EMERGENCY SHOWER EYEWASH	1-1/4"
- INSTALL WATER HAMMER ARRESTORS EQUAL TO ZURN "SHOKTROL" AT EACH QUICK CLOSING VALVE, AND AT EACH GROUP OF PLUMBING FIXTURES, AND AS NOTED ON DRAWINGS SIZED AS PER MANUFACTURERS RECOMMENDATIONS. (MUST BE ACCESSIBLE WHERE POSSIBLE, ABOVE CEILING IF NECESSARY)
- ALL SUPPLIES TO FIXTURE SHALL BE PROVIDED WITH HIGH EAR COUPLING EQUAL TO MUELLER CO. No. C-100HE (1/2", 3/4" OR 1" SIZE) AT THE WALL (ANCHOR TO CROSS MEMBER SUPPORT) BEFORE PIPE ENTERS ROOM SPACE TO ASSURE NO PIPE MOVEMENT WITHIN WALL CAVITY.
- ALL FLOOR DRAINS SHALL BE PROVIDED WITH DEEP SEAL TYPE TRAP WITH NOT LESS THAN FOUR INCH (4") WATER SEAL AND BE PROVIDED WITH TRAP PRIMER.
- ALL VENTS THROUGH ROOF (V.T.R.) SHALL BE PROVIDED WITH 6# (24" X 24" SIZE) FLASHING. WHERE STANDING SEAM TYPE IS USED THE FLASHING SHALL BE IN ACCORDANCE WITH THE ROOFING MANUFACTURERS RECOMMENDATION AND AS DETAILED ON THE ARCHITECTURAL DRAWINGS. CLOSE COORDINATION WITH THE ROOFING CONTRACTOR SHALL BE MAINTAINED TO ASSURE THE VENT PENETRATION IS CENTERED WITHIN THE METAL ROOF PANELS. TYPICALLY FOR METAL OR OTHER SPECIAL MATERIAL, ROOFS - USE MANUFACTURED RUBBER BOOT WITH STAINLESS STEEL HARDWARE TYPE THAT IS ARCHITECT APPROVED AND MUST BE COMPATIBLE WITH ROOFING SYSTEM AND ROOF WARRANTY.
- FLUSH VALVES SHALL BE MOUNTED SUCH THAT THE DIMENSION FROM FLUSH VALVE CENTERLINE TO FINISHED FLOOR SHALL BE 36". (DOES NOT APPLY TO ELECTRONIC FLUSH VALVES) WHERE HANDICAPPED GRAB BARS ARE INSTALLED ON BACK WALL AT CLOSET, FLUSH VALVE SHALL BE MOUNTED AT STANDARD HEIGHT. SEE SPECIFICATIONS AND WATER CLOSET DETAIL.
- WHERE THIS SYMBOL OCCURS ON THE DRAWINGS, REFERENCE SHOULD BE MADE TO THE KEYED NOTES ON THAT SAME SHEET AND THE CORRESPONDING NUMBER OF THAT NOTE.
- WHERE PLUMBING FIXTURES ARE LOCATED ON EXTERIOR WALL, WATER PIPING SHALL BE INSTALLED ON THE THERMAL SIDE OF THE WALL INSULATION.
- CLOSE COORDINATION AND COOPERATION SHALL BE MAINTAINED BETWEEN TRADES WITH REGARD TO PLUMBING, HVAC, FIRE PROTECTION AND ELECTRICAL PLANS.
- PROVIDE CLEANOUT CLEARANCE IN ACCORDANCE WITH THE ARKANSAS STATE PLUMBING CODE, BUT DO NOT LOCATE IN FOOT TRAFFIC PATHWAYS. DO NOT LOCATE CLEANOUTS IN FLOORS WITH CARPET. (FIELD COORDINATE) LOCATE FLOOR CLEANOUT NEAR WALLS, IN JANITORS ROOM, STORAGE ROOM, ETC., DO NOT LOCATE NEAR DOORWAYS.
- PROVIDE FIRE STOPPING OR FIRE STOP SLEEVE DEVICES AT ALL RATED ASSEMBLIES - SEE ARCHITECTURAL SPECIFICATIONS AND ARCHITECTURAL DRAWINGS FOR DETAILS.
- TRAP PRIMERS- LOCATE TRAP PRIMERS REASONABLY CLOSE TO PLUMBING FIXTURE (10' TO 20')- DO NOT CONNECT TRAP PRIMER TO WATER LINE LARGER THAN 1/2" SIZE- TRY TO LOCATE TRAP PRIMER LOWER THAN PLUMBING FIXTURES. FIELD VERIFY EXACT TRAP PRIMER LOCATIONS AND WATER PIPE ROUTING. TRAP PRIMER SHALL TYPICALLY BE PRECISION PLUMBING PRODUCTS MODEL # P2-500. WHERE FLOOR DRAINS OCCUR NEAR WATER CLOSETS - USE VACUUM BREAKER TRAP PRIMER - SLOAN "TP" - MODEL VBF-72A - EXPOSED 3/8" TUBING SHALL BE VERY MINIMAL AND CHROME PLATED WITH CAST CHROME FLANGE TO WALL.
- COORDINATE EXACT LOCATIONS OF ALL PLUMBING PIPING WITH ARCHITECTURAL AND STRUCTURAL DRAWINGS.
- VERIFY WITH ARCHITECTURAL DRAWINGS FOR EXACT LOCATIONS OF ALL "ADA" PLUMBING FIXTURES
- ALL JANITORS ROOMS SHALL HAVE FLOOR DRAINS.
- ALL SANITARY SEWER RISERS SHALL HAVE CLEANOUT AT THE BASE (WALL CLEANOUT OR FLOOR CLEANOUT)
- ALL STORM DRAIN PIPING SHALL HAVE CLEANOUT PLUGS AT EACH 90° TURN ABOVE CEILINGS AND HAVE A FLOOR OR WALL CLEANOUT AT THE BASE OF ALL RISERS.
- INSTALL PIPING EXPANSION JOINTS IN ALL PIPING THAT CROSSES BUILDING EXPANSION JOINTS. SEE ARCHITECTURAL AND STRUCTURAL DRAWINGS AND PLUMBING ROOF PLAN FOR BUILDING EXPANSION JOINT LOCATIONS.
- TWO-WAY CLEANOUTS SHALL BE INSTALLED AT THE JUNCTION OF THE BUILDING DRAIN AND THE BUILDING SEWER (TYP ALL AREAS) - MUST BE INSTALLED TO MEET PLUMBING CODES, EVEN IF NOT SHOWN ON DRAWING - VERIFY AND COORDINATE WITH CIVIL UTILITY DRAWINGS.

PLUMBING LEGEND

SYMBOL	DESCRIPTION		
---	SOIL, WASTE, OR SANITARY SEWER	---	UNION
SS	SANITARY SEWER (ON SITE)	FD	FLOOR DRAIN
-----	SANITARY VENT	RD	ROOF DRAIN
CWV	COMBINATION WASTE AND VENT	AD	ACCESS DOOR
W	WATER (ON SITE)	VTR	VENT THRU ROOF
---	COLD WATER	HB	HOSE BIBB
---	HOT WATER	FPWH	FREEZE PROOF WALL HYDRANT
---	HOT WATER RETURN	CO	CLEANOUT PLUG
SD	STORM DRAIN	FCO	FLOOR CLEANOUT
D	INDIRECT DRAIN	AFCO	FLOOR CLEANOUT WITH ACID RESISTANT PIPING AND FITTINGS
G	NATURAL GAS (LOW PRESSURE GAS)	WCO	WALL CLEANOUT
→	FLOW DIRECTION	ECO	EXTERIOR CLEANOUT
⊗	GATE VALVE	⊗	DENOTES - SANITARY VENT STACK THRU ROOF
⊕	GLOBE VALVE	⊗	RISER DIAGRAM LOCATION SHEET #
⊕	CHECK VALVE	⊗	RISER DIAGRAM #
⊕	BALL VALVE	⊗	NEW CONNECTION TO EXISTING
⊕	PLUG COCK - GAS COCK	⊗	EXISTING PIPING TO BE REMOVED OR ABANDONED
⊕	PRESSURE REDUCING VALVE	⊗	EXISTING PIPING TO REMAIN
⊕	STRAINER	⊗	CAP AND SEAL AIR OR WATER TIGHT
		⊗	TERMINATION POINT OF DEMOLITION

PLUMBING FIXTURE SCHEDULE

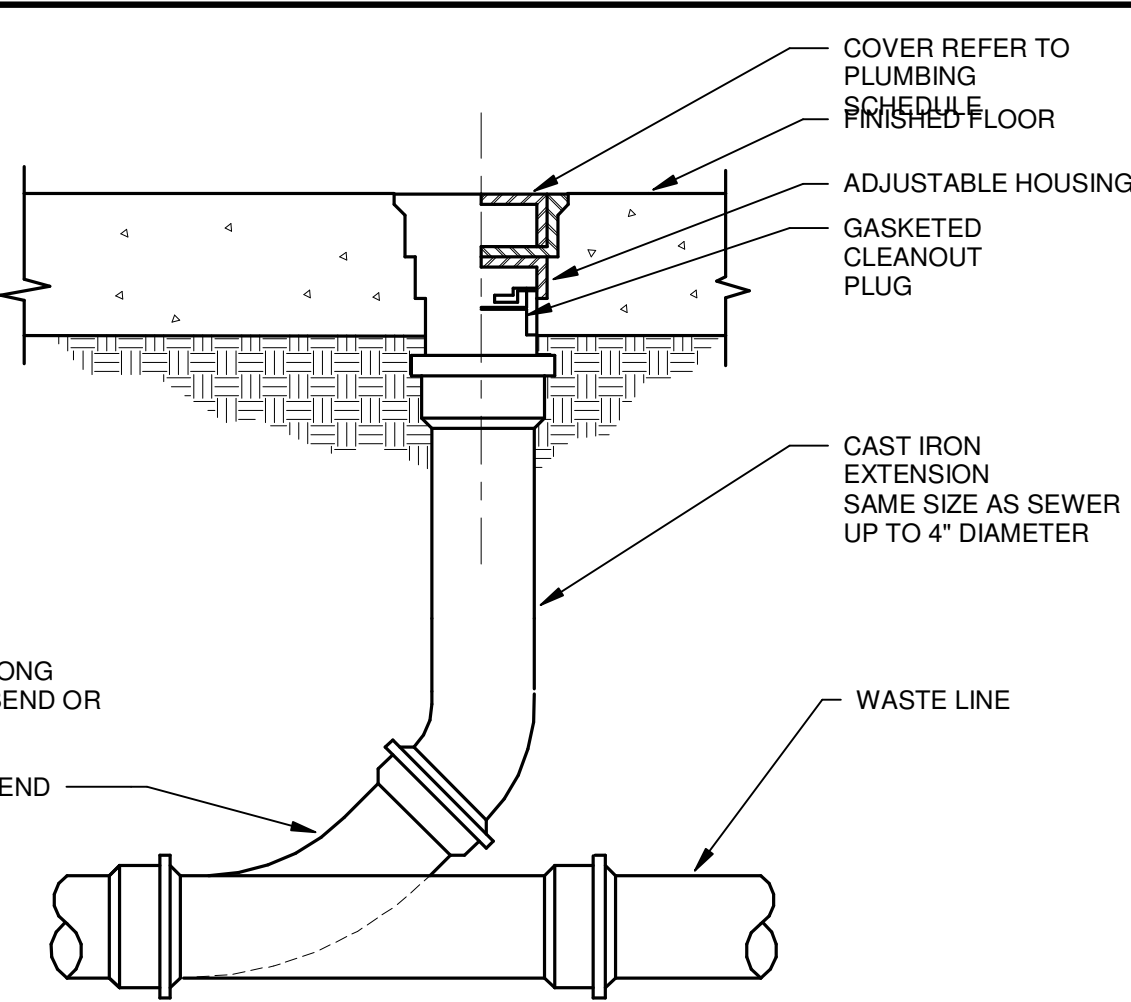
- WATER CLOSET WC-1 (HANDICAPPED)** - KOHLER K-4332 "HIGHCREST", VITREOUS CHINA, SIPHON JET, 1.6 GALLON FLUSH VALVE, ELONGATED RIM, FLOOR MOUNTED, 1-1/2 INCH TOP SPUD BOWL;
TRIM - SLOAN 111-YB-YC "REGAL" EXPOSED FLUSH VALVE, 11/2" TOP SPUD, WALL FLANGE, SET SCREW;
SEAT - OLSONITE 95-SS "INDUSTRIAL", FINISH WHITE, EXTRA HEAVY-DUTY PLASTIC FOR ELONGATED BOWL, OPEN FRONT WITH CONCEALED CHECK HINGE, SELF-SUSTAINING FEATURE, AND STAINLESS STEEL HINGE POST;
NOTE: RIM OF FIXTURE IS 16-1/2 INCHES ABOVE THE FINISH FLOOR.
- LAVATORY L-1 (ADA)** - KOHLER K-2006 "KINGSTON", WALL MOUNTED, 21 INCH HIGH, VITREOUS CHINA WITH BACK, RECTANGULAR BASIN, SPLASH LIP, FRONT OVERFLOW AND TWO SOAP DEPRESSIONS; DRILL FOR SINGLE HOLE FAUCET.
TRIM - DELTA HEAVY DUTY COMMERCIAL SINGLE LEVER FAUCET. MCGUIRE 155-A GRID DRAIN, PERFORATED STRAINER AND 1-1/4" TAILPIECE.
SUPPLIES - MCGUIRE H2167LK 1/2 INCH IPS HEAVY CAST BRASS ANGLE STOP, LOOSE KEY HANDLE, ANNEALED VERTICAL TUBE, CHROME PLATED CAST BRASS SET SCREW ESCUTCHEON, C.P. BRASS NIPPLE TO WALL;
P-TRAP - MCGUIRE 8872 (1-1/4 INCH) POLISHED CHROME PLATED CAST BRASS ADJUSTABLE "P" TRAP WITH CLEANOUT AND 17-GAGE TUBING TO WALL WITH C.P. CAST BRASS SET SCREW ESCUTCHEON;
SUPPORT - ZURN Z-1231 CONCEALED ARMCARRIER HAVING STEEL UPRIGHTS WITH ADJUSTABLE HEADERS, CONCEALED ARMS.
NOTE: ALL EXPOSED SUPPLY (HOT AND COLD WATER) AND DRAIN PIPING SHALL BE INSULATED TO MEET ADA R EQUIREMENTS. P-TRAP AND ANGLE VALVE ASSEMBLIES SHALL BE COVERED WITH MOLDED, ANTI-MICROBIAL TRUEBRO "LAV-GUARD" MODEL #102 (VERIFY EXACT MODEL REQUIRED), COLOR GREY. COVER SHALL BE SECURED WITH SNAP-CLIPS. NOTE THE SUPPLIES INSULATION MUST BE MODIFIED FOR THIS INSTALLATION.
- SERVICE SINK SS-1** - WILLIAMS MODEL SB-900, TERRAZZO, 24"X24"X12" SIZE, ONE PIECE STAINLESS STEEL CAP, T-40 MOP HANGER, T-35 HOSE AND WALL BRACKET, "BP" STAINLESS STEEL SPLASH BACK PANELS,
TRIM - AMERICAN STANDARD MODEL 8354.112 FAUCET, POLISHED CHROME FINISH, LOOSE KEY STOPS, TOP BRACE, LEVER HANDLES, VACUUM BREAKER, 8" CENTERS.
- ELECTRICAL WATER COOLER EWC-1 (ADA)** - OSIS MODEL P68SBFSL, WITH BOTTLE FILLING STATION WITH INTEGRAL SWIRLFLO FOUNTAIN, BI-LEVEL, REFRIGERATED FILTERED STAINLESS, CHILLING CAPACITY OF 8.0 GPH OF 50 DEGREE DRINKING WATER, BASED ON 80 DEGREE INLET WATER AND 90 DEGREE AMBIENT. HANDS FREE VISUAL FILTER MONITOR, FILTERED, ANTIMICROBIAL, REAL DRAIN. FURNISHED WITH FLEXI GUARD SAFETY BUBBLER, ELECTRONIC BOTTLE FILLER SENSOR WITH MECHANICAL FRONT BUBBLER BUTTON ACTIVATION. WALL MOUNTED WITH INWALL FRAME AND PLATE, STAINLESS STEEL ACCESS PANEL.
SUPPLIES - MCGUIRE H-ST12LK HEAVY CAST BRASS STRAIGHT STOP WITH LOOSE KEY HANDLE, 1/2 INCH SIZE; TRAP - MCGUIRE 8088 (1-1/4 INCH) POLISHED CHROME PLATED CAST BRASS ADJUSTABLE GROUND SWIVEL PATTERN WITH CLEANOUT;
SUPPORT - ZURN Z-1225-BL "RIGID PLATE SYSTEM" HAVING STEEL UPRIGHTS WITH SUPPORT PLATES, AND BEARING JACKS ON ADJUSTABLE HEADERS AS REQUIRED FOR BI-LEVEL MOUNTING. VERIFY EXACT CARRIER REQUIRED WHEN MOUNTED ON CONCRETE BLOCK WALLS.
- EQUIPMENT (BY OTHERS)** - ROUGH-IN AND MAKE FINAL CONNECTIONS FOR EQUIPMENT AS INDICATED ON PLANS. FURNISH ENGINEERED BRASS CO., VSH15BK, MCGUIRE OR KOHLER STRAIGHT STOP, (1/2 INCH IPS) OR FEMALE INLET AND OUTLET AND POLISHED CHROMIUM PLATED CAST BRASS; KOHLER K-8998 (1-1/4" INCH) OR K-9000 (1-1/2 INCH), AMERICAN STANDARD OR ELJER POLISHED CHROMIUM PLATED CAST BRASS ADJUSTABLE GROUND JOINT SWIVEL PATTERN WITH CLEANOUT AND OTHER TRIM AS INDICATED ON PLANS. ALL EXPOSED PIPING SHALL BE CHROME-PLATED AND ESCUTCHEONS SHALL BE C.P. CAST BRASS SET SCREW TYPE.

WATER HEATER SCHEDULE

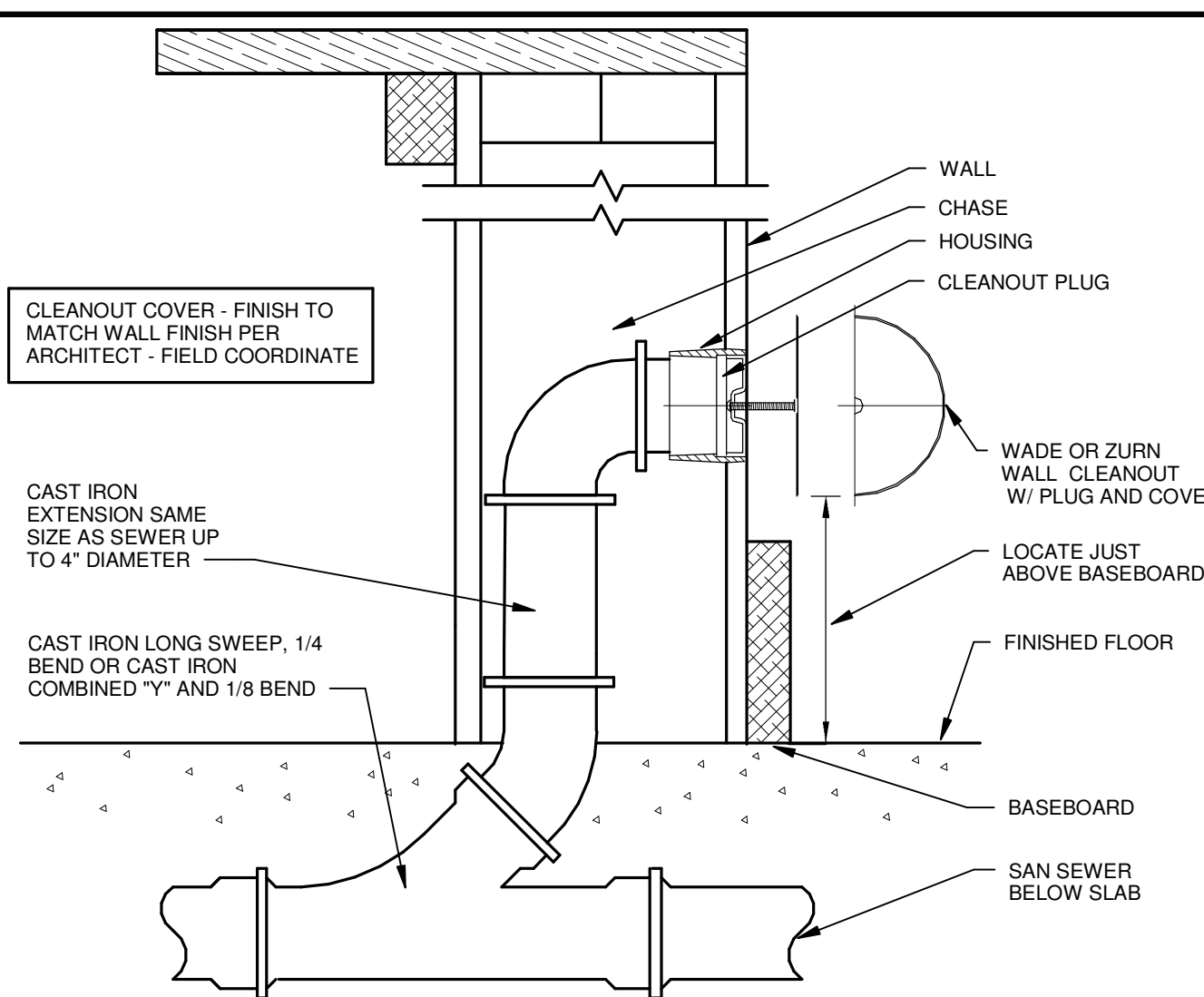
- WH-1 WATER HEATER** - A.O. SMITH MODEL DEL-10, COMMERCIAL ELECTRIC, 3KW, 120 VOLT, SINGLE PHASE, WITH T&P RELIEF VALVE. FURNISH CASH ACME - VR-801 VACUUM RELIEF VALVE. FURNISH AMTROL ST-5 EXPANSION TANK (2.0 GALLON CAPACITY MIN).

DRAIN SCHEDULE

- FD-1 FLOOR DRAIN** - ZURN ZN-145B-P-VP. CAST IRON DRAIN, 7" POLISHED NICKEL BRONZE "TYPE B" STRAINER, ADJUSTABLE COLLAR WITH SEEPAGE SLOTS, 1/2" TRAP PRIMER CONNECTION.



1 FLOOR CLEAN-OUT (FCO)
SCALE: NONE



2 WALL CLEAN-OUT (WCO)
SCALE: NONE

Phase III Restoration of the Ritz Theater
 213 South Main Street
 Malvern, Arkansas 72104
 ASU Three Rivers

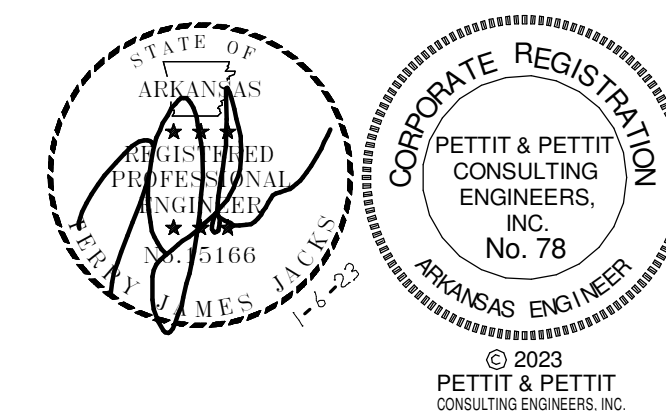
REVISIONS:

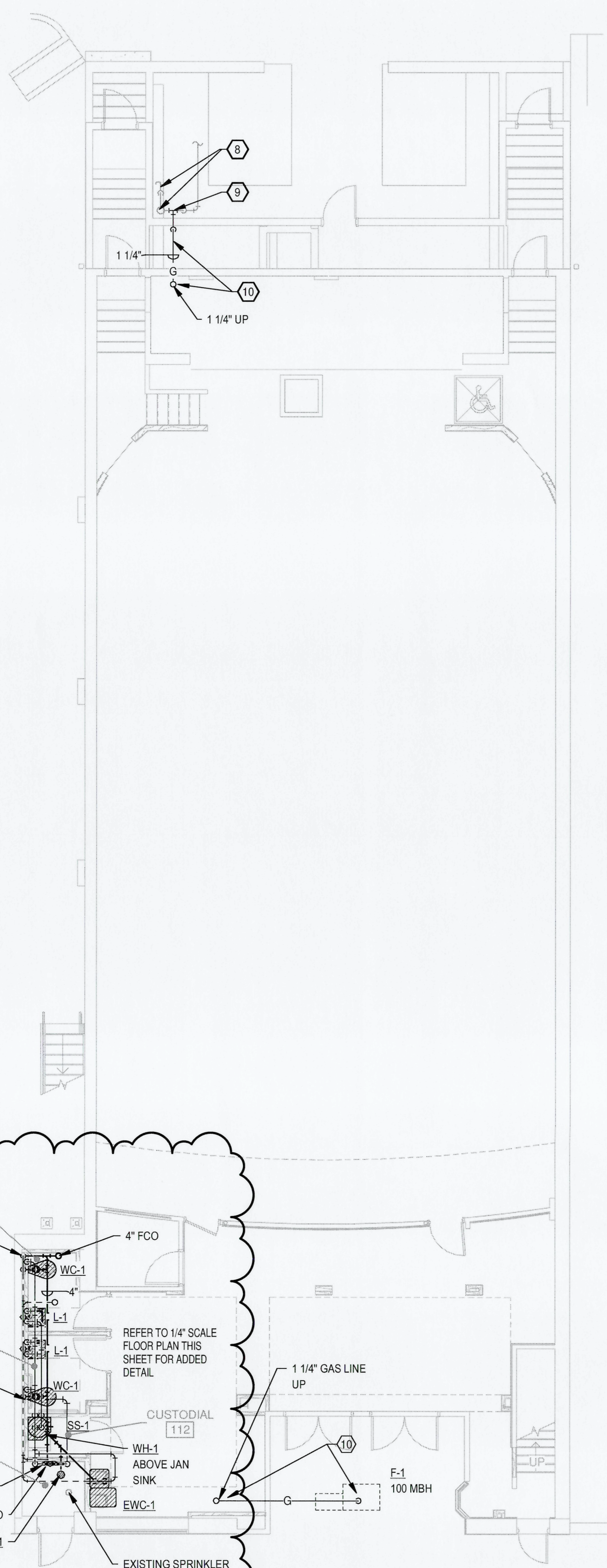
1	Addendum #1	1-24-23
---	-------------	---------

PROJECT NO.
19114.03
DATE:
JANUARY 6, 2023

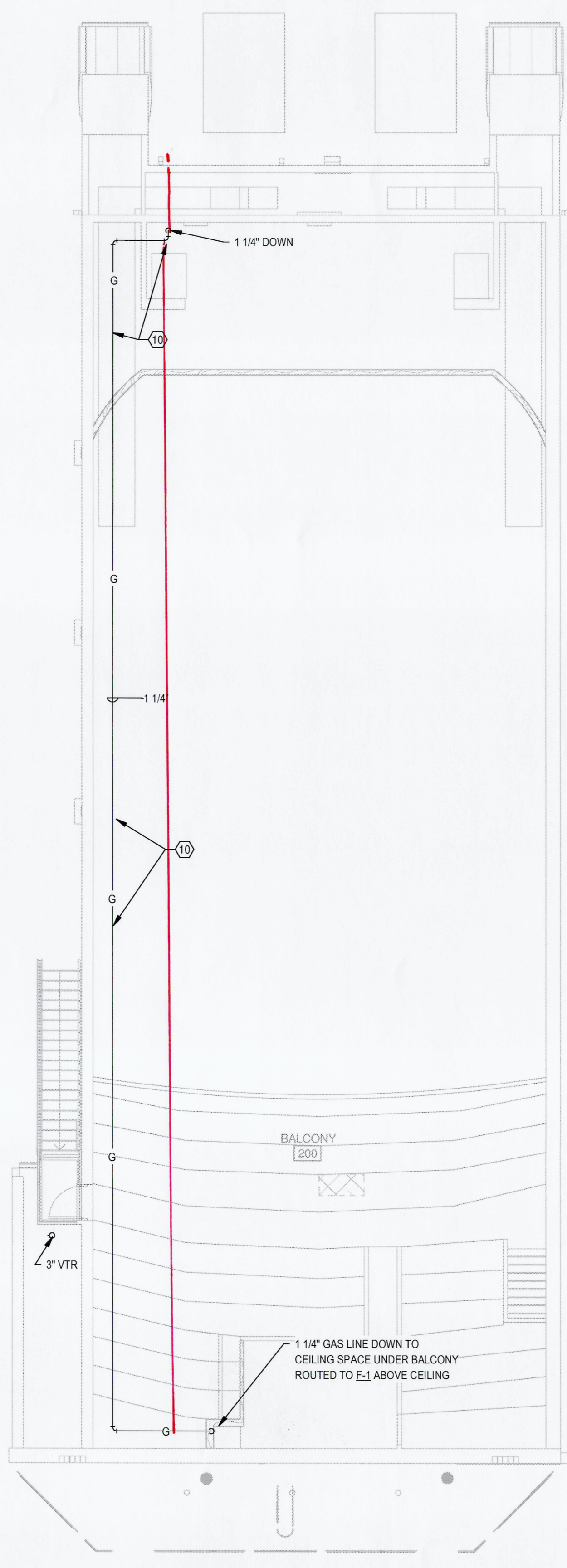
PLUMBING
GENERAL NOTES
AND LEGENDS

P0.00



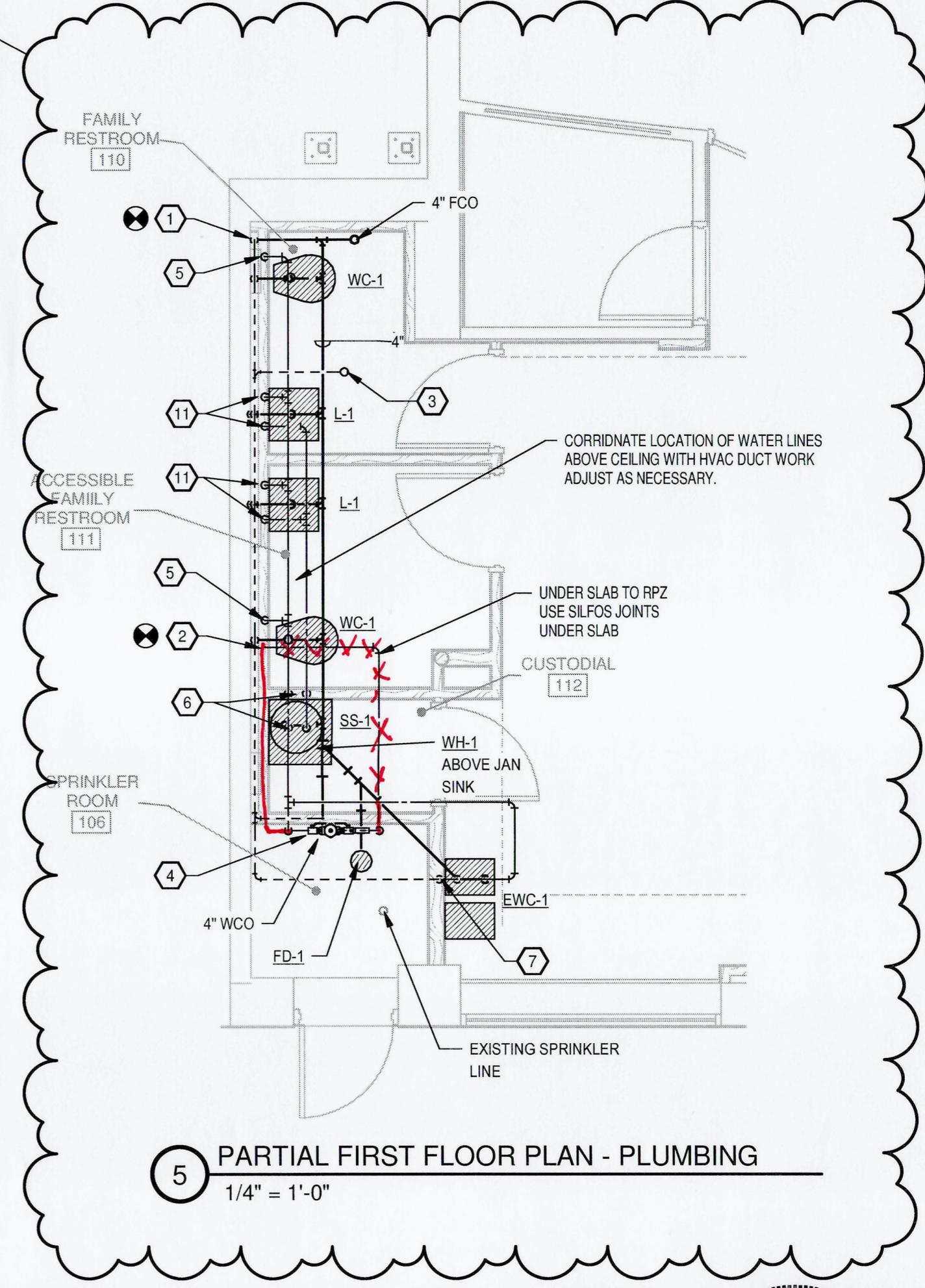


1 FIRST FLOOR PLAN - PLUMBING
1/8" = 1'-0"



2 BALCONY PLAN - PLUMBING
1/8" = 1'-0"

- PLUMBING KEYED NOTES**
- 1 CONNECT NEW 4" SANITARY SEWER LINE TO EXISTING. FIELD VERIFY EXACT LOCATION, SIZE AND DEPTH OF EXISTING SEWER LINE. CONNECT TO EXISTING SEWER LINE AS REQUIRED.
 - 2 CONNECT NEW 1 1/2" DOMESTIC COLD WATER LINE TO EXISTING. FIELD VERIFY EXACT LOCATION AND SIZE PRIOR TO CONNECTION. ROUTE BELOW GRADE TO BACKFLOW PREVENTER AND PROVIDE BALL VALVE BEFORE RPZ FOR TOILET ROOM SHUT-OFF. ROUTE NEW LINE UP THROUGH RPZ AND ABOVE CEILING TO FIXTURES.
 - 3 ROUTE 3" SEWER VENT THROUGH ROOF. COORDINATE ROUTING WITH EXISTING STRUCTURE.
 - 4 PROVIDE AND INSTALL 1 1/2" WATTS MODEL LF909 REDUCED PRESSURE ZONE ASSEMBLY WITH BRONZE STRAINER AND AIR GAP. PROVIDE ACCESS AS REQUIRED BY MANUFACTURER AND PLUMBING CODE. EXTEND DRAIN TO ED-1 WITH 45 DEGREE TURN DOWN.
 - 5 1 1/4" CW DOWN IN CHASE - ROUTE FULL SIZE TO WC-1 - INSTALL ZURN #300 WATER HAMMER ARRESTORS AT ENDS OF CW HEADER - CONNECT ALL FIXTURES AS REQUIRED.
 - 6 3/4" CW & 3/4" HW DROP DOWN TO WH-1 AND 3/4" CW & 3/4" HW TO SS-1 - CONNECT FIXTURES AS REQUIRED.
 - 7 1/2" CW DOWN TO EWC-1 - CONNECT AS REQUIRED.
 - 8 EXISTING GAS REGULATOR AND 2" GAS LINE. VERIFY EXACT LOCATION AND SIZE PRIOR TO CONNECTION.
 - 9 CONNECT NEW 1 1/4" GAS LINE TO EXISTING. PROVIDE GAS COCK AT CONNECTION POINT AND SLEEVE PIPE THROUGH EXTERIOR WALL. SEAL ALL VOIDS FIRE AND WEATHER PROOF CAULK.
 - 10 COORDINATE ROUTING OF NEW 1 1/4" GAS LINE WITH EXISTING STRUCTURE. MOUNT GAS LINE AS HIGH AS POSSIBLE AND MIN OF 18" OFF WALL. DROP DOWN TO NEW FURNACE AND CONNECT AS REQUIRED.
 - 11 1/2" CW AND 1/2" HW DOWN CHASE - ROUTE FULL SIZE TO L-1 - PROVIDE HEAVY DUTY WALL STOPS - CONNECT TO FIXTURE AS REQUIRED.



5 PARTIAL FIRST FLOOR PLAN - PLUMBING
1/4" = 1'-0"

As-Builts
9/7/2023
CSUSA

Phase III Restoration of the Ritz Theater
213 South Main Street
Malvern, Arkansas 72104
ASU Three Rivers

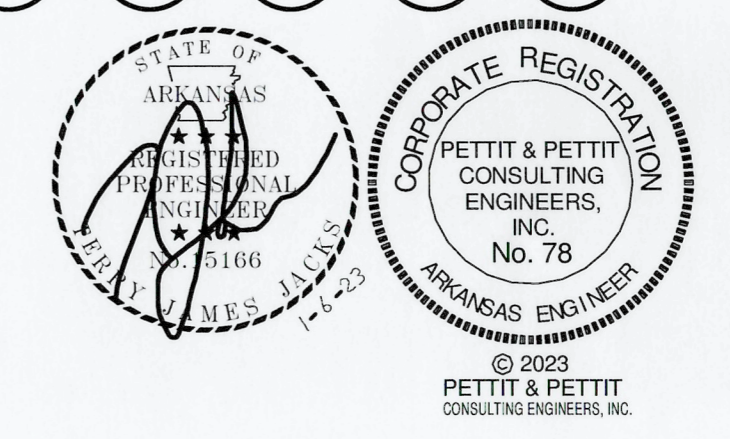
REVISIONS:

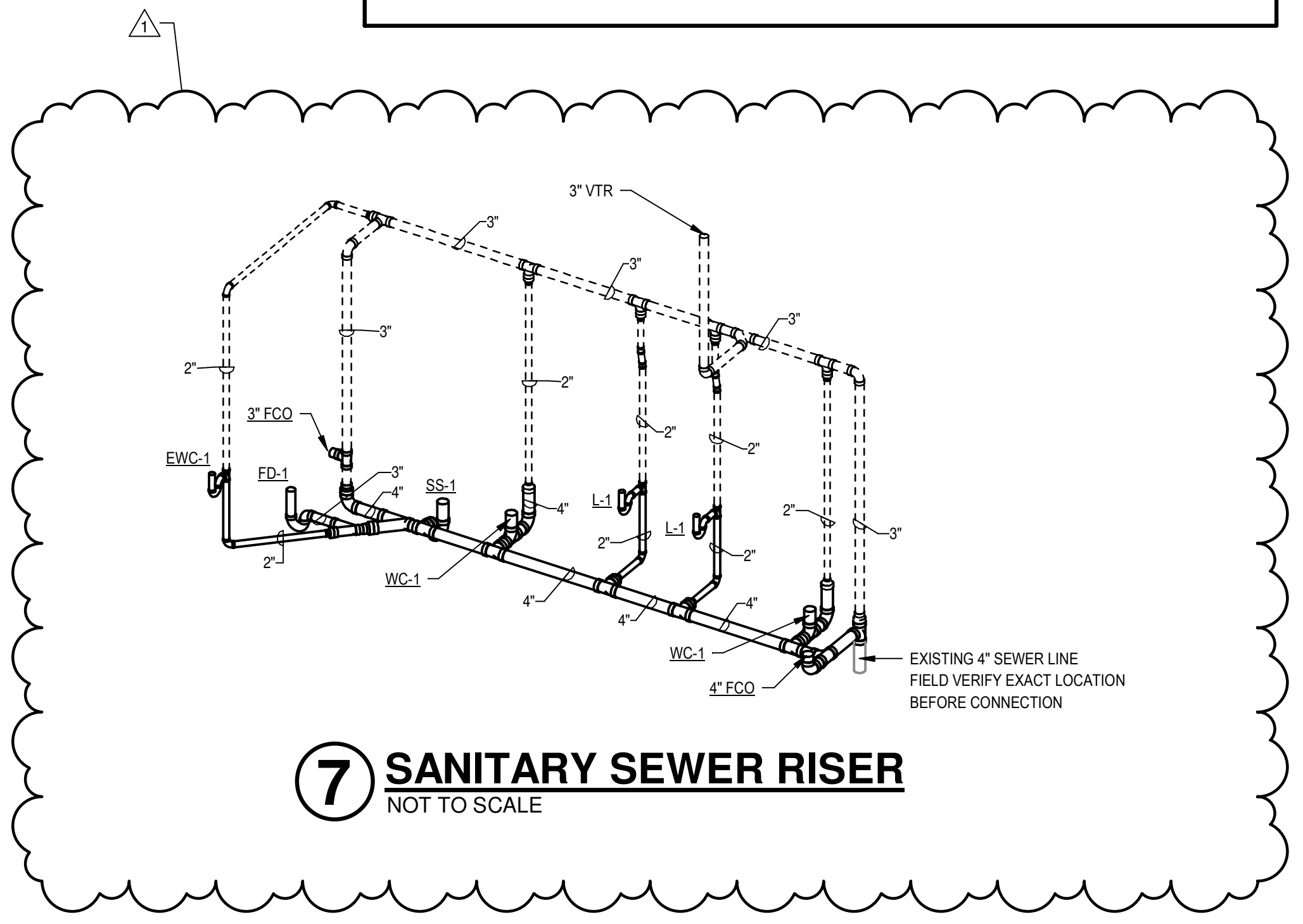
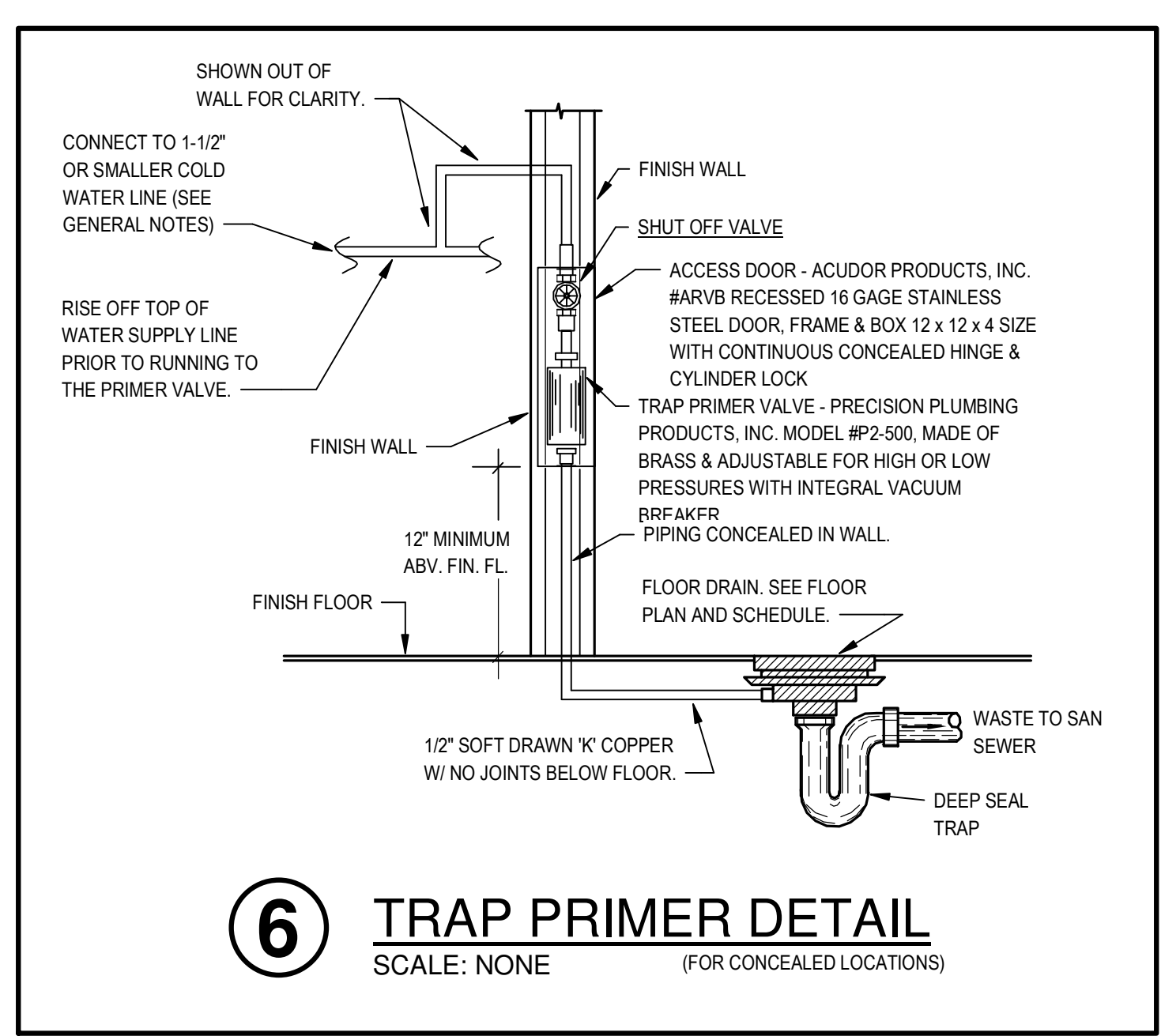
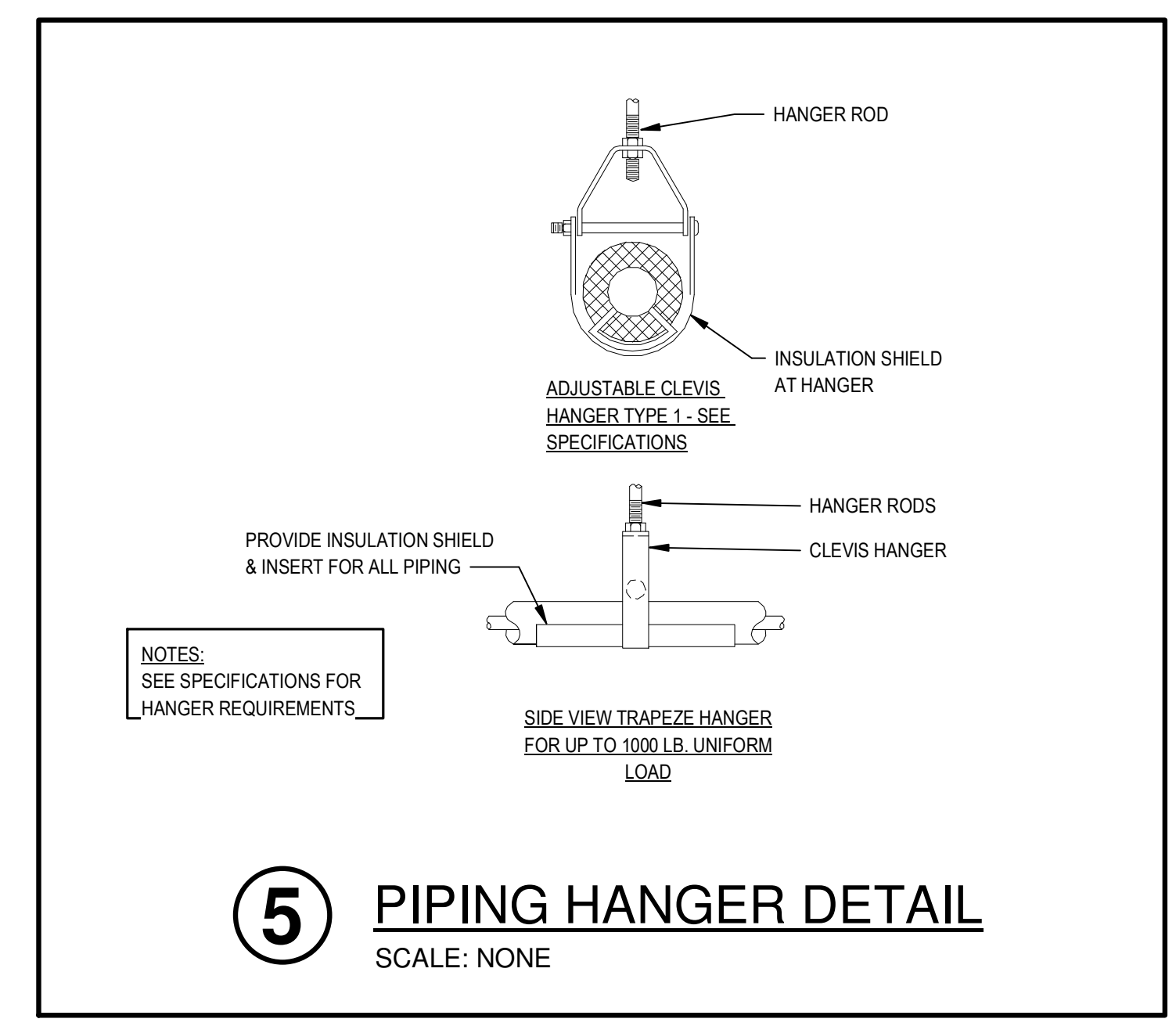
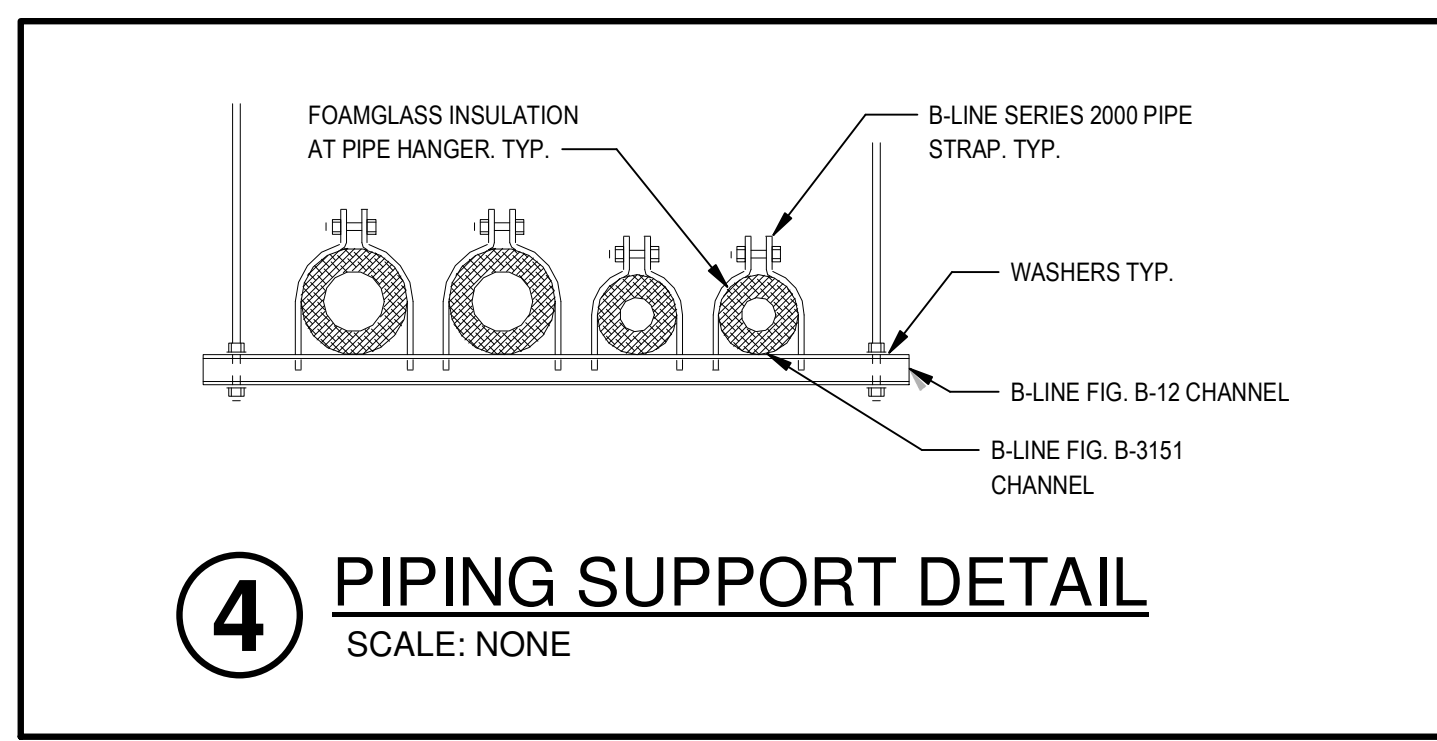
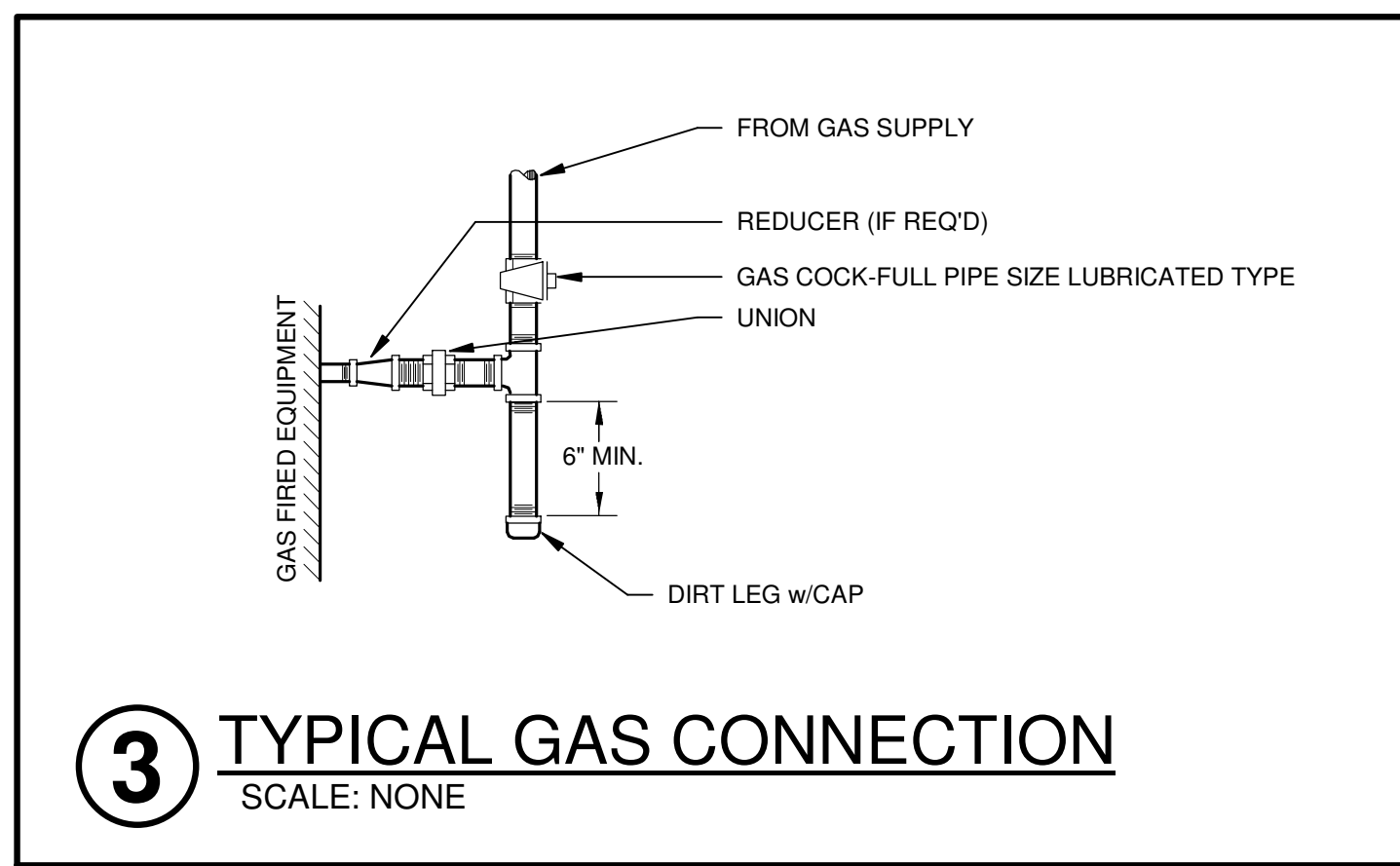
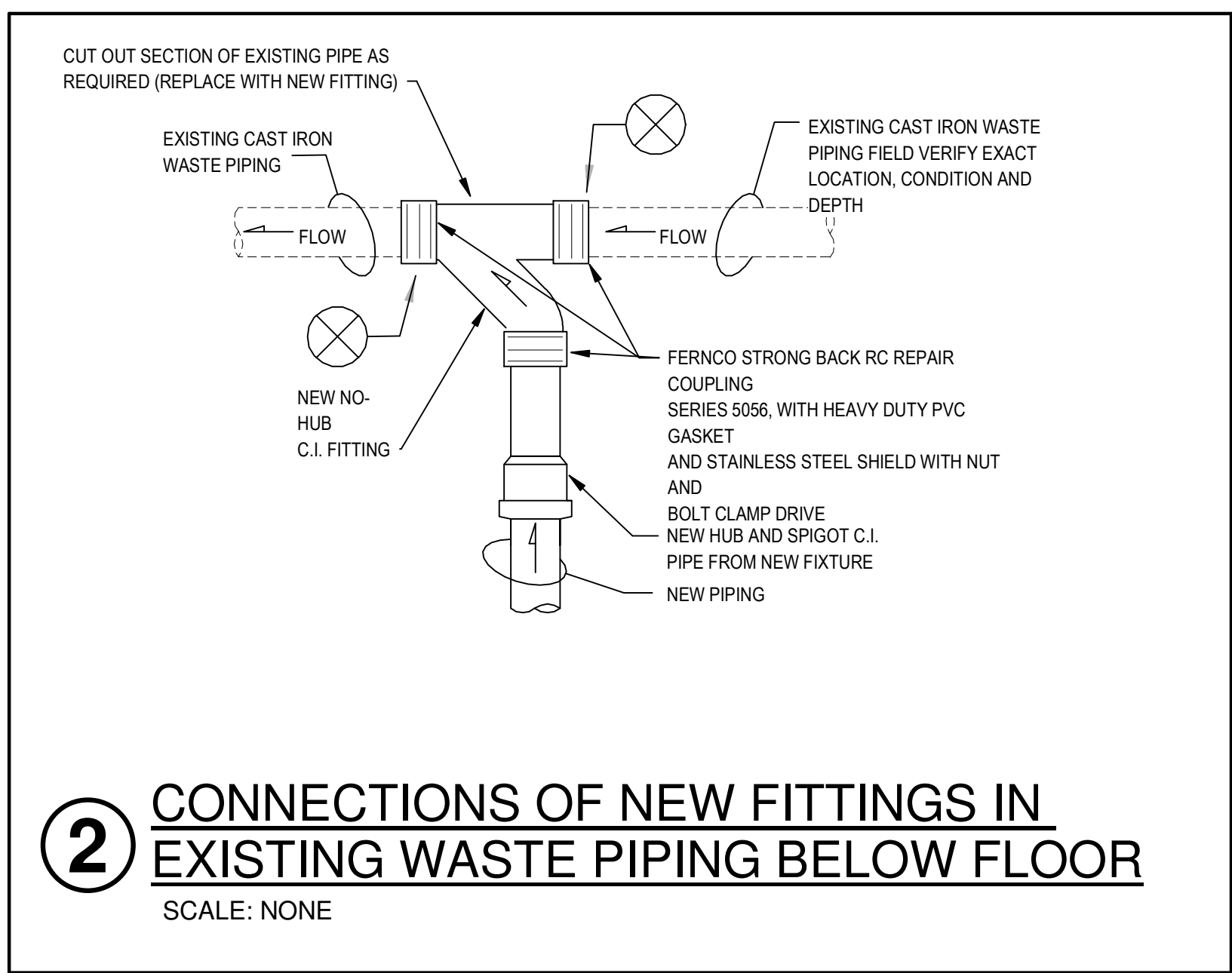
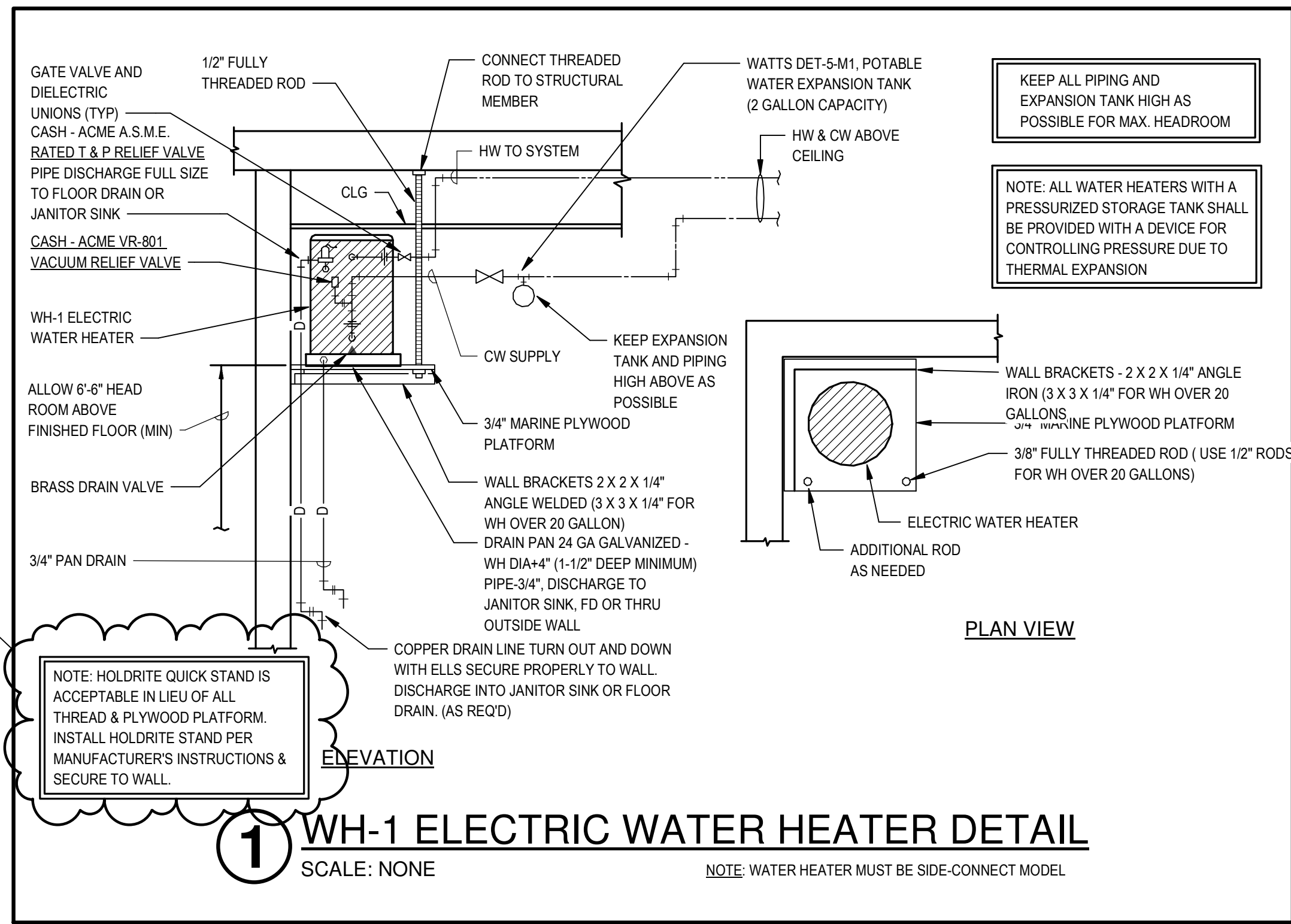
1	Addendum #1	1-24-23
---	-------------	---------

PROJECT NO.
19114.03
DATE:
JANUARY 6, 2023

FLOOR PLANS -
PLUMBING

P1.00





Phase III Restoration of the Ritz Theater
213 South Main Street
Malvern, Arkansas 72104
ASU Three Rivers

REVISIONS:

1	Addendum #1	1-24-23
---	-------------	---------

PROJECT NO.
19114.03
DATE:
JANUARY 6, 2023

PLUMBING DETAILS

P2.01

