

GENERAL NOTES

- CONTRACTOR TO VERIFY EXISTING DAMPER LOCATIONS FOR EXHAUST BRACHES TO CEILING GRILLES AND PROVIDE NEW WHERE DAMPERS ARE MISSING, WERE PREVIOUSLY DEMOLISHED, OR ARE IN POOR CONDITION.

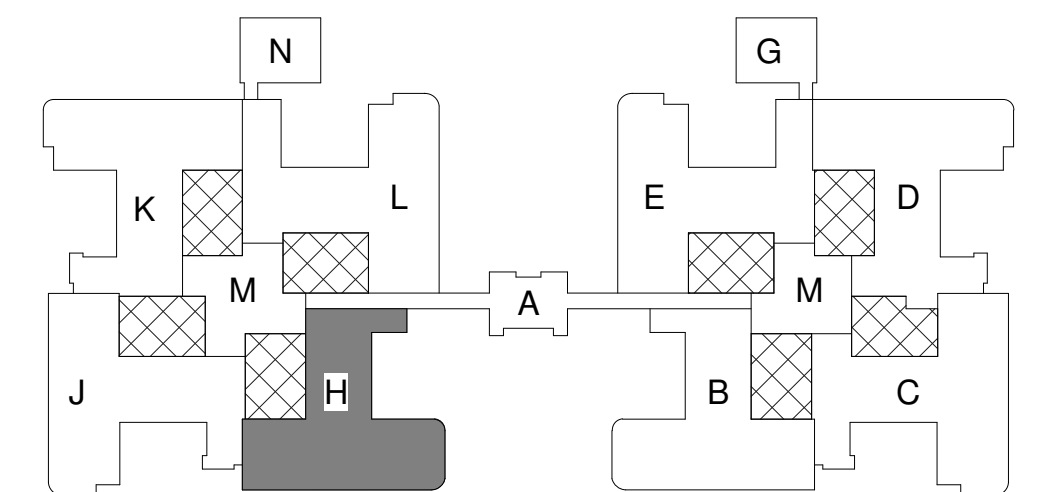
KEYED NOTES

- CONNECT TO EXISTING VERTICAL DUCT ROUTED UP FROM BELOW IN CHASE.
- EXHAUST DUCT UP TO THIRD FLOOR. SEE MH104 FOR CONTINUATION.
- EXISTING EXHAUST VERTICAL DUCT ROUTED FROM FIRST FLOOR TO THIRD FLOOR IN CHASE.

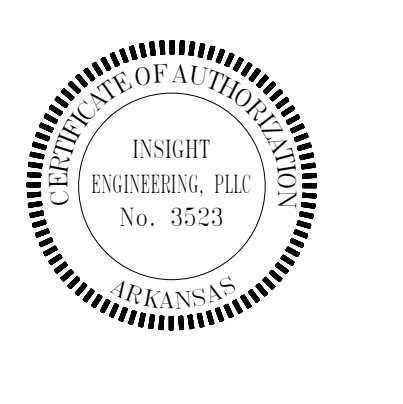
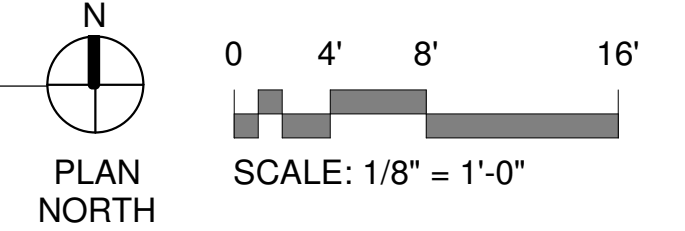
As-Builts
11/15/2023
CSUSA

HVAC LEGEND

SYMBOL	DESCRIPTION
[Hatched Box]	NEW EQUIPMENT
[Solid Box]	EXISTING EQUIPMENT TO REMAIN
[Dotted Box]	EXISTING EQUIPMENT TO BE DEMOLISHED
[Dashed Line]	EXISTING DUCT/PIPING TO BE DEMOLISHED
[Solid Line]	EXISTING DUCT/PIPING TO REMAIN
[Thin Solid Line]	NEW DUCT/PIPING
[Line with Arrow]	CAPPED PIPE
[Line with Wavy Arrow]	THERMOSTAT WIRE
[Circle with T]	THERMOSTAT
[Circle with H-1]	HVAC EQUIPMENT DESIGNATION
[Circle with Arrow]	CONNECT TO EXISTING
[Diamond with X]	POINT OF DEMOLITION
[Line with T]	MANUAL VOLUME DAMPER
[Line with T and Arrow]	STREAMLINE TAP WITH MANUAL VOLUME DAMPER
[Square with X]	SUPPLY DIFFUSER
[Square with /]	RETURN GRILLE
[Square with X]	EXHAUST GRILLE



F1 RENOVATION PLAN - SECOND LEVEL - HVAC
 1/8" = 1'-0"
 F.F.E. = 319.50'



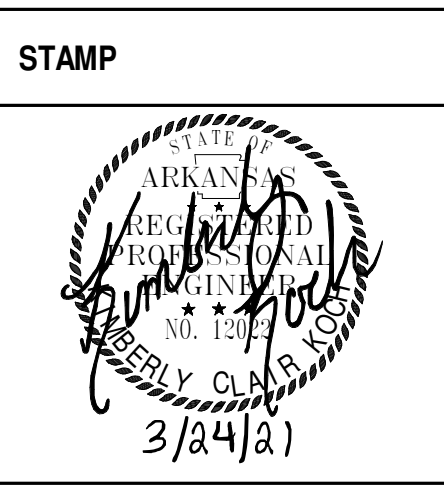
Revisions:
 Date:

CONSULTANTS

<p>INTERIOR DESIGN APOGEE ENGINEERS ARCHITECTS 9449 PRIORITY WAY WEST DRIVE STE 240 INDIANAPOLIS, IN 46240</p>	<p>MEP ENGINEER INSIGHT ENGINEERING, PLLC 201 S. CHESTER, SUITE B LITTLE ROCK, AR 72201</p>	<p>FIRE PROTECTION LACEY FIRE PROTECTION ENGINEERING, LLC P.O. BOX 723 GREENBRIER AR 72058</p>
---	---	--

ARCHITECT/ENGINEER OF RECORD

A/E
JohnsonDanforth & Associates
 2200 N. RODNEY PARHAM ROAD
 SUITE 210
 LITTLE ROCK, AR 72212
 501-404-4811
 jda@JohnsonDanforth.com
 JDA PROJECT #: 2018.001



Office of Construction and Facilities Management
 VA U.S. Department of Veterans Affairs

Drawing Title
RENOVATION PLAN - SECOND FLOOR - HVAC

Approved: Project Director

Phase
CONSTRUCTION DOCUMENTS

FULLY SPRINKLERED

Project Title
DESIGN PRIVATE/SEMI-PRIVATE BED SPACES FOR 3H

Location
EJT HEALTHCARE CENTER

Issue Date
 2021.03.24

Checked
 KCK

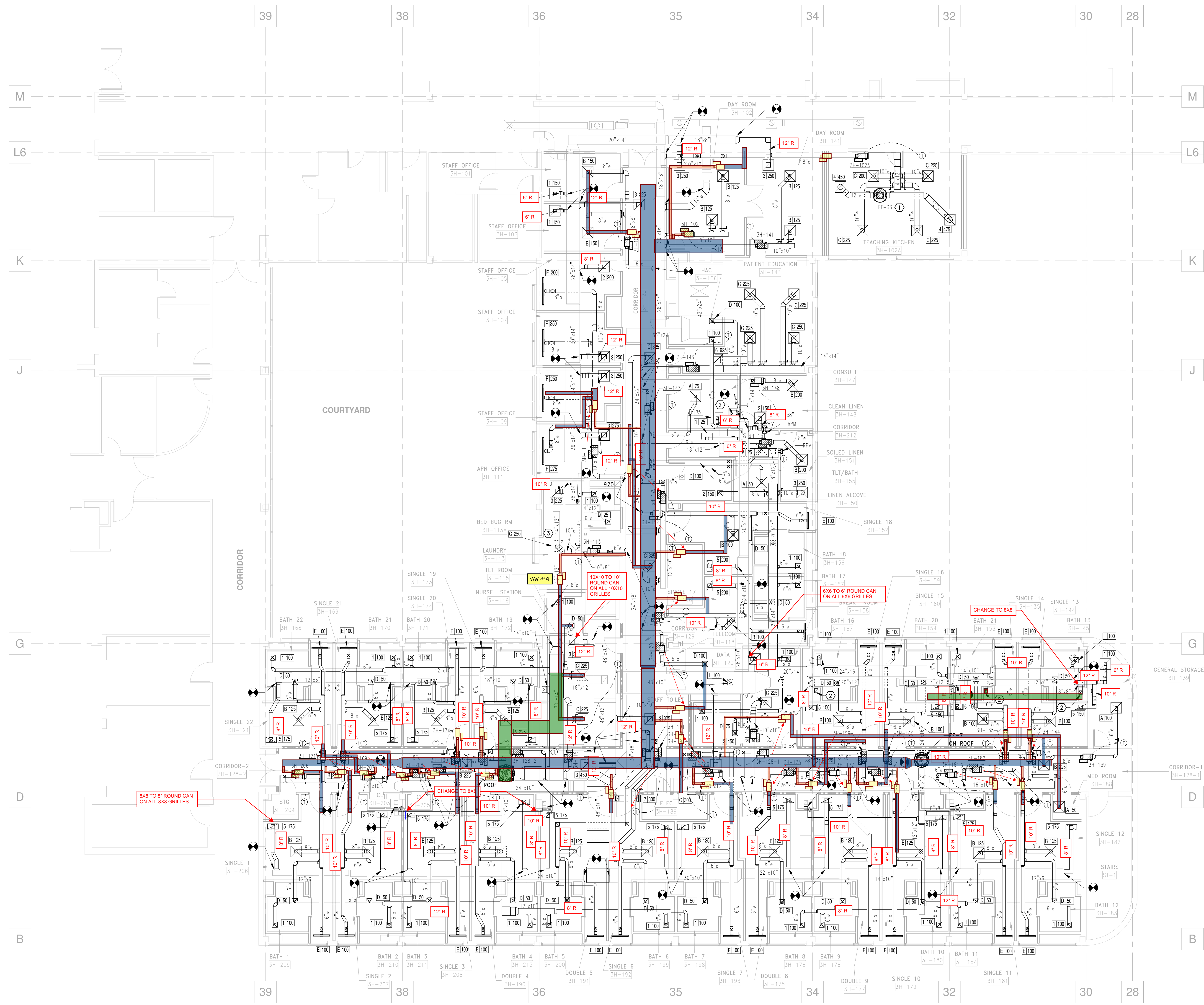
Drawn
 CJC

MISSION CRITICAL CONSTRUCTION DOCUMENTS

Project Number
598-18-104

Building Number
B-170

Drawing Number
MH103



GENERAL NOTES

1. PROVIDE DAMPER ON ALL RETURN AIR BRANCHES AT CONNECTION TO MAINS.
2. PROVIDE ACCESS PANELS IN ALL GYPSUM CEILINGS BELOW VAYS, DAMPERS, AND VALVES FOR ACCESSIBILITY.
3. AIR DEVICES ABOVE HARD CEILINGS TO HAVE FACE OPERABLE OPPOSED BLADE DAMPERS. SEE MECHANICAL SCHEDULES FOR INFORMATION.

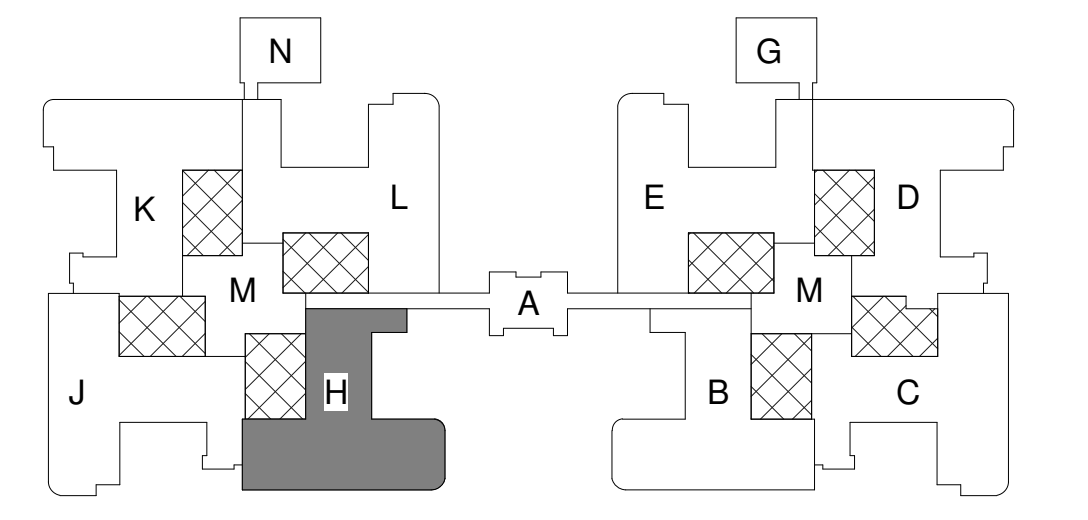
KEYED NOTES

1. EXHAUST FAN MOUNTED ON ROOF ON NEW CURB PROVIDED BY FAN MANUFACTURER. INSTALL AT A MINIMUM 10' FROM ROOF'S EDGE.
2. EXHAUST DUCT UP FROM SECOND FLOOR.
3. CONNECT THE DRYER EXHAUST TO EXISTING DRYER VENT.

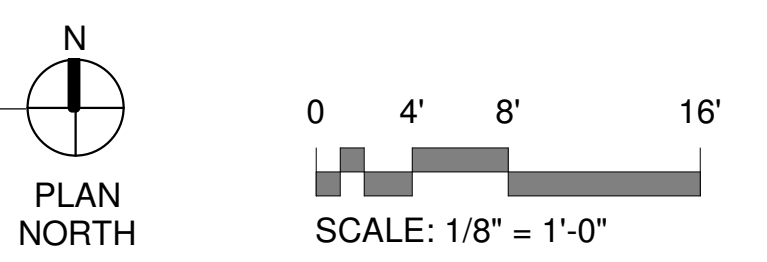
As-Builts
11/15/2023
CSUSA

HVAC LEGEND

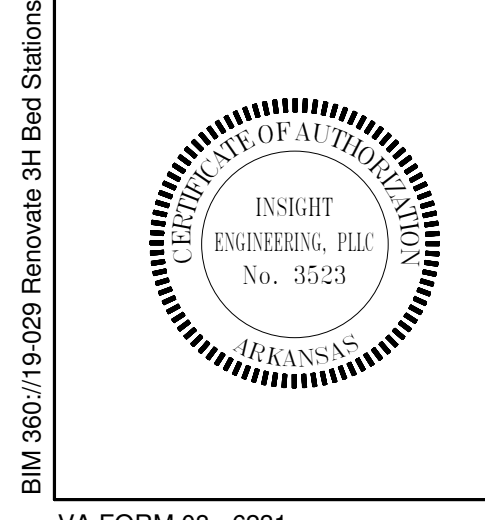
SYMBOL	DESCRIPTION
	NEW EQUIPMENT
	EXISTING EQUIPMENT TO REMAIN
	EXISTING EQUIPMENT TO BE DEMOLISHED
	EXISTING DUCT/PIPING TO BE DEMOLISHED
	EXISTING DUCT/PIPING TO REMAIN
	NEW DUCT/PIPING
	CAPPED PIPE
	THERMOSTAT WIRE
	THERMOSTAT
	HVAC EQUIPMENT DESIGNATION
	CONNECT TO EXISTING
	POINT OF DEMOLITION
	MANUAL VOLUME DAMPER
	STREAMLINE TAP WITH MANUAL VOLUME DAMPER
	SUPPLY DIFFUSER
	RETURN GRILLE
	EXHAUST GRILLE



F2 RENOVATION PLAN - THIRD LEVEL - HVAC
 1/8" = 1'-0"
 F.F.E. = 329.50'



TRUE NORTH
 PLAN NORTH
 SCALE: 1/8" = 1'-0"



Revisions: _____ Date: _____

CONSULTANTS

<p>INTERIOR DESIGN APOGEE ENGINEERS ARCHITECTS 9449 PRIORITY WAY WEST DRIVE STE 240 INDIANAPOLIS, IN 46240</p>	<p>MEP ENGINEER INSIGHT ENGINEERING, PLLC 201 S. CHESTER, SUITE B LITTLE ROCK, AR 72201</p>	<p>FIRE PROTECTION LACEY FIRE PROTECTION ENGINEERING, LLC P.O. BOX 723 GREENBRIER AR 72058</p>
---	---	--

ARCHITECT/ENGINEER OF RECORD

A/E
JohnsonDanforth & Associates
 2200 N. RODNEY PARHAM ROAD
 SUITE 210
 LITTLE ROCK, AR 72212
 501-404-4811
 jda@JohnsonDanforth.com
 JDA PROJECT #: 2018.001

STAMP

Office of Construction and Facilities Management

VA U.S. Department of Veterans Affairs

Drawing Title
RENOVATION PLAN - THIRD LEVEL - HVAC

Approved: Project Director

Phase
CONSTRUCTION DOCUMENTS

FULLY SPRINKLERED

Project Title
DESIGN PRIVATE/SEMI-PRIVATE BED SPACES FOR 3H

Location
EJT HEALTHCARE CENTER

Issue Date
 2021.03.24

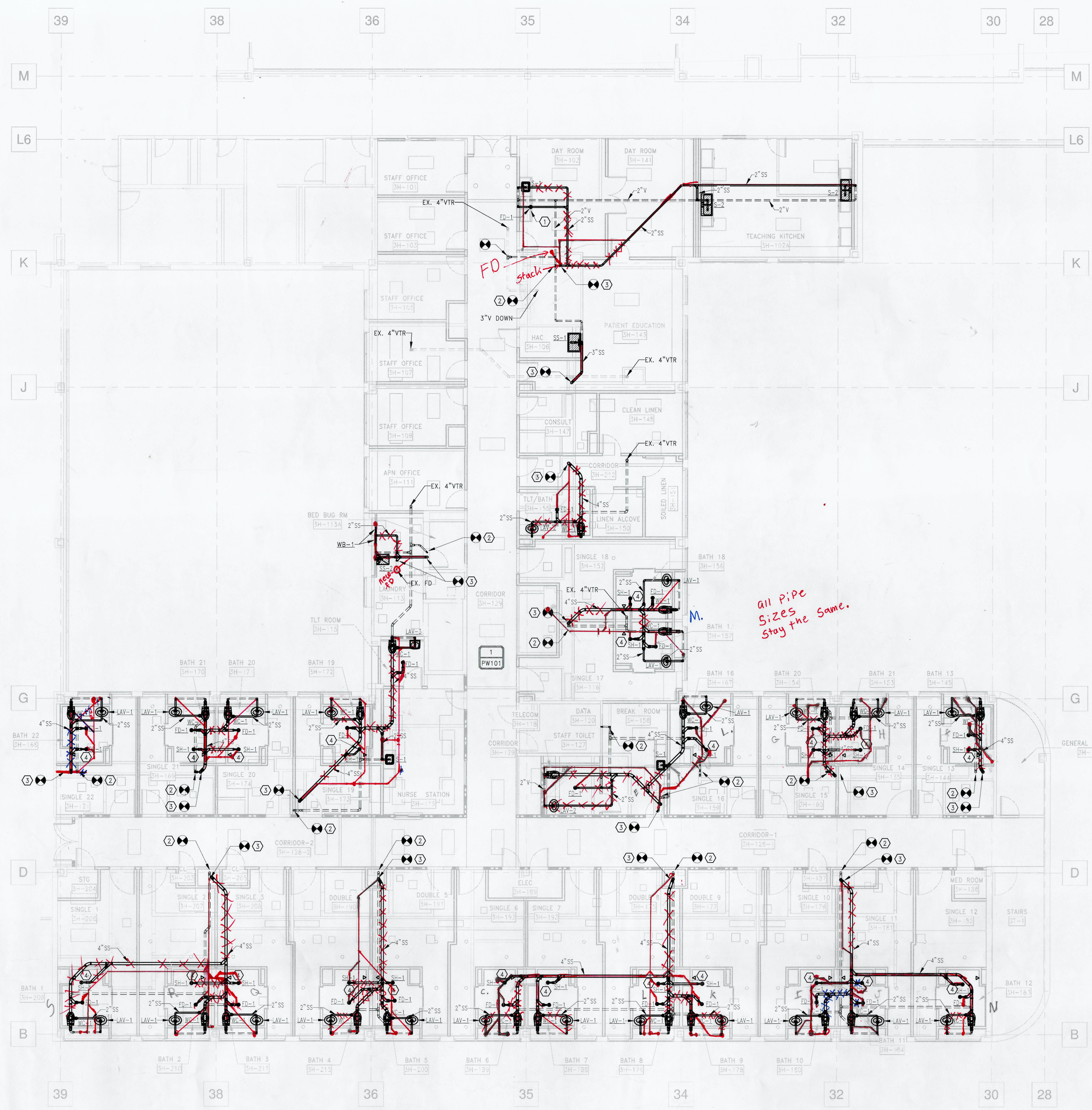
Checked
 KCK

Drawn
 CJC

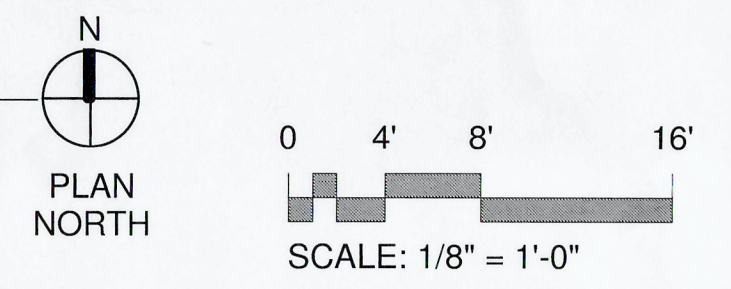
Project Number
598-18-104

Building Number
B-170

Drawing Number
MH104



F3 RENOVATION PLAN - THIRD LEVEL - SANITARY SEWER
 1/8" = 1'-0"
 F.F.E. = 329.50'

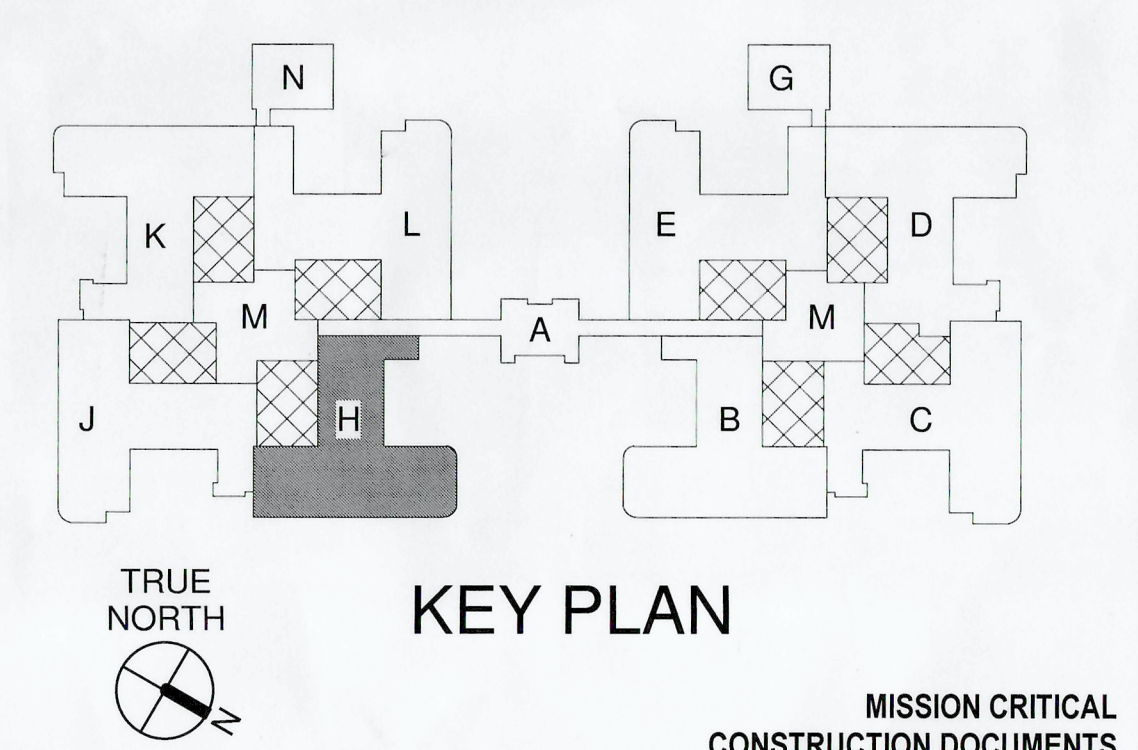


- GENERAL NOTES**
- ROUTE ALL NEW VENT PIPING SERVING NEW PLUMBING FIXTURES ON THIRD FLOOR AND EXISTING VENT STACKS SERVING LOWER FLOORS TO ABOVE THIRD FLOOR CEILING AND CONNECT TO NEAREST EXISTING VENT TO ROOF AS REQUIRED TO PROVIDE A COMPLETE AND OPERATIVE SYSTEM.
- KEYED NOTES**
- COORDINATE FINAL LOCATION OF FD WITH OWNER PROVIDED ICE MAKER PRIOR TO INSTALLATION.
 - CONNECT NEW VENT PIPING TO EXISTING VENT PIPING ABOVE SECOND FLOOR CEILING AND OFFSET AS REQUIRED TO ROUTE VENT PIPING UP IN THIRD FLOOR WALL AS SHOWN.
 - CONNECT NEW SS PIPE TO EXISTING SS PIPING ABOVE SECOND FLOOR CEILING AND ROUTE AS SHOWN.
 - REFER TO ARCHITECTURAL FOR CONNECTION OF SANITARY PIPE TO TRENCH DRAIN ASSEMBLY.

As-Builts
11/15/2023
CSUSA

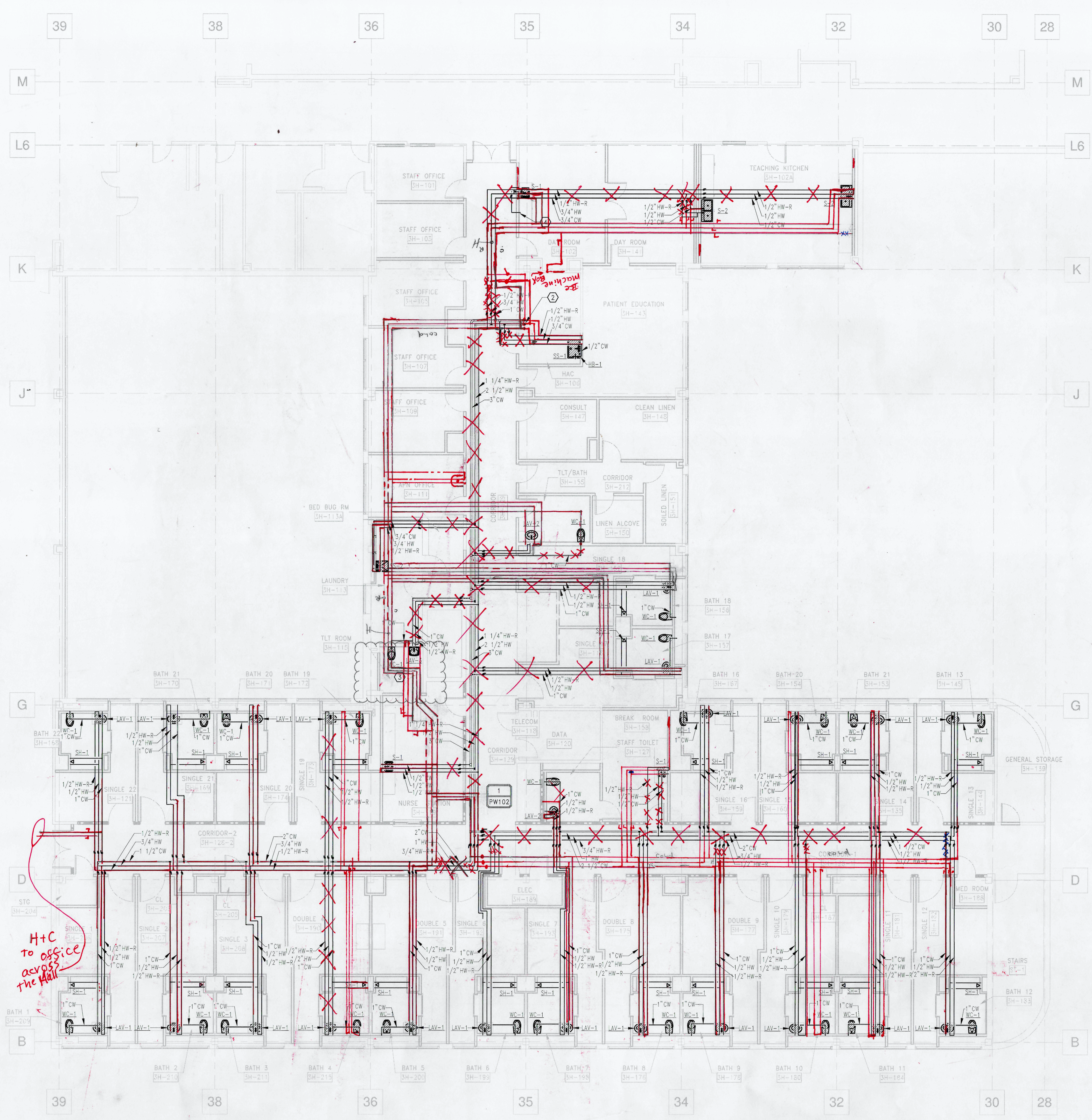
PLUMBING LEGEND

SYMBOL	DESCRIPTION
	NEW EQUIPMENT
	EXISTING EQUIPMENT TO REMAIN
	EXISTING EQUIPMENT TO BE DEMOLISHED
	PIPING TO BE DEMOLISHED
	COLD WATER (CW)
	HOT WATER (HW)
	HOT WATER RETURN (HWR)
	SANITARY SEWER
	VENT
	MEDICAL GAS AIR (A)
	MEDICAL GAS VACUUM (V)
	MEDICAL GAS OXYGEN (O)
	BALL VALVE
	GATE VALVE
	CHECK VALVE
	PLUMBING FIXTURE DESIGNATION



	<p>CONSULTANTS</p> <p>INTERIOR DESIGN APOGEE ENGINEERS ARCHITECTS 8449 PRIORITY WAY WEST DRIVE STE 240 INDIANAPOLIS, IN 46240</p> <p>MEP ENGINEER INSIGHT ENGINEERING, PLLC 301 S. CHESTER, SUITE B LITTLE ROCK, AR 72201</p> <p>FIRE PROTECTION LACEY FIRE PROTECTION ENGINEERING, LLC P.O. BOX 723 GREENBRIER AR 72058</p>	<p>ARCHITECT/ENGINEER OF RECORD</p> <p>A/E JohnsonDanforth & Associates 2200 N. RODNEY PARHAM ROAD SUITE 210 LITTLE ROCK, AR 72212 501-404-4811 jda@JohnsonDanforth.com JDA PROJECT # 2018.001</p>	<p>STAMP</p>	<p>Office of Construction and Facilities Management</p> <p>VA U.S. Department of Veterans Affairs</p>	<p>Drawing Title RENOVATION PLAN - THIRD LEVEL - SANITARY SEWER</p> <p>Approved: Project Director</p>	<p>Phase CONSTRUCTION DOCUMENTS</p> <p>FULLY SPRINKLERED</p>	<p>Project Title DESIGN PRIVATE/SEMI-PRIVATE BED SPACES FOR 3H</p> <p>Location EJT HEALTHCARE CENTER</p> <p>Issue Date 2021.03.24</p>	<p>Project Number 598-18-104</p> <p>Building Number B-170</p> <p>Drawing Number PL101</p>
--	--	---	---------------------	--	---	---	--	---

3/24/2021 10:10:14 AM
 BIM 360//19-029 Renovation 3H Bed Spaces/19-029 - 3H Insight Central Mdr Rev.20.rvt
 VA FORM 08 - 6231



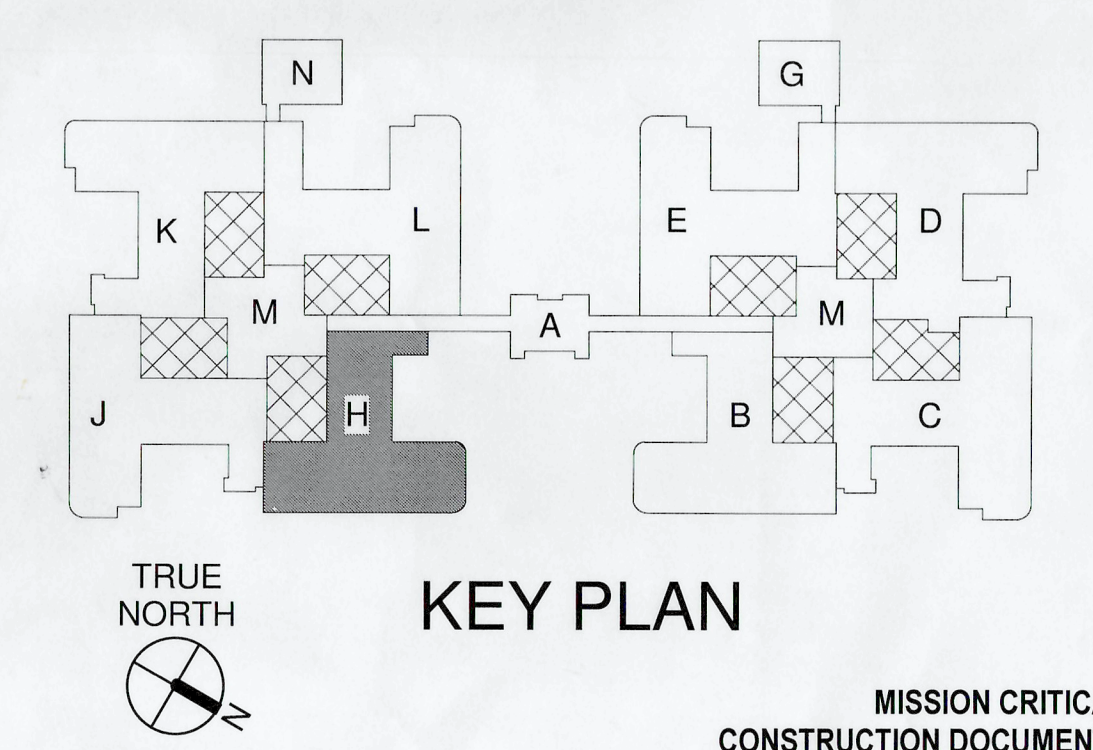
- ### GENERAL NOTES
- PROVIDE SUPPLY STOP VALVES ON CW, HW, AND HWR PIPES SERVING ALL FIXTURE GROUPS AS SHOWN FOR FIXTURE GROUP ISOLATION.
 - CONNECT HWR TO HW DOWN IN WALL AS CLOSE AS POSSIBLE TO FIXTURE TO MINIMIZE HW DEADLEGS.
 - TYPICAL FIXTURE DOMESTIC WATER PIPE SIZE CONNECTIONS:
 - A. LAVATORY:
 - a. COLD WATER = 1/2"
 - b. HOT WATER = 1/2"
 - c. HOT WATER RETURN = 1/2"
 - B. WATER CLOSET:
 - a. COLD WATER = 1"
 - C. SHOWER:
 - a. COLD WATER = 1/2"
 - b. HOT WATER = 1/2"
 - c. HOT WATER RETURN = 1/2"
 - D. SINK:
 - a. COLD WATER = 1/2"
 - b. HOT WATER = 1/2"
 - c. HOT WATER RETURN = 1/2"
 - E. HOSE BIBB:
 - a. COLD WATER = 1/2"

- ### KEYED NOTES
- COLD WATER, HOT WATER, AND HOT WATER RETURN, VALVED AFTER EXITING THE CHASE ABOVE CEILING FOR FUTURE CONNECTION.
 - COLD WATER, HOT WATER, AND HOT WATER RETURN IN CHASE FROM GROUND FLOOR UP TO THIRD FLOOR.
 - CONTRACTOR TO INSTALL ASCO REMOTE WATER SHUT OFF VALVE FOR BATHROOM FOR DRUG TESTING PURPOSES. CONTRACTOR TO VERIFY REMOTE CONTROL LOCATION WITH OWNER PRIOR TO INSTALLATION.
 - 1/2" CW CONNECTION FOR JES-MARKER- PROVIDE SUPPLY STOP VALVE.

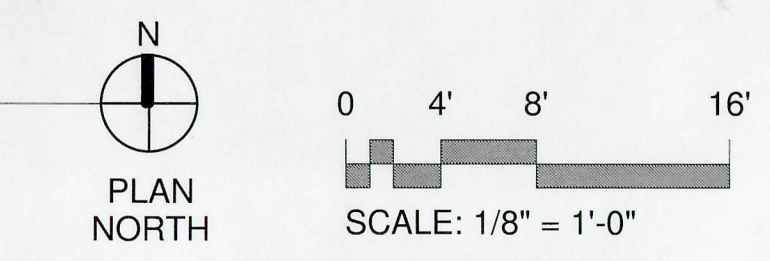
As-Builts
11/15/2023
CSUSA

PLUMBING LEGEND

SYMBOL	DESCRIPTION
	NEW EQUIPMENT
	EXISTING EQUIPMENT TO REMAIN
	EXISTING EQUIPMENT TO BE DEMOLISHED
	PIPING TO BE DEMOLISHED
	COLD WATER (CW)
	HOT WATER (HW)
	HOT WATER RETURN (HWR)
	SANITARY SEWER
	VENT
	MEDICAL GAS AIR (A)
	MEDICAL GAS VACUUM (V)
	MEDICAL GAS OXYGEN (O)
	BALL VALVE
	GATE VALVE
	CHECK VALVE
	PLUMBING FIXTURE DESIGNATION



F3 RENOVATION PLAN - THIRD LEVEL - DOMESTIC WATER
 1/8" = 1'-0"
 F.F.E. = 329.50'



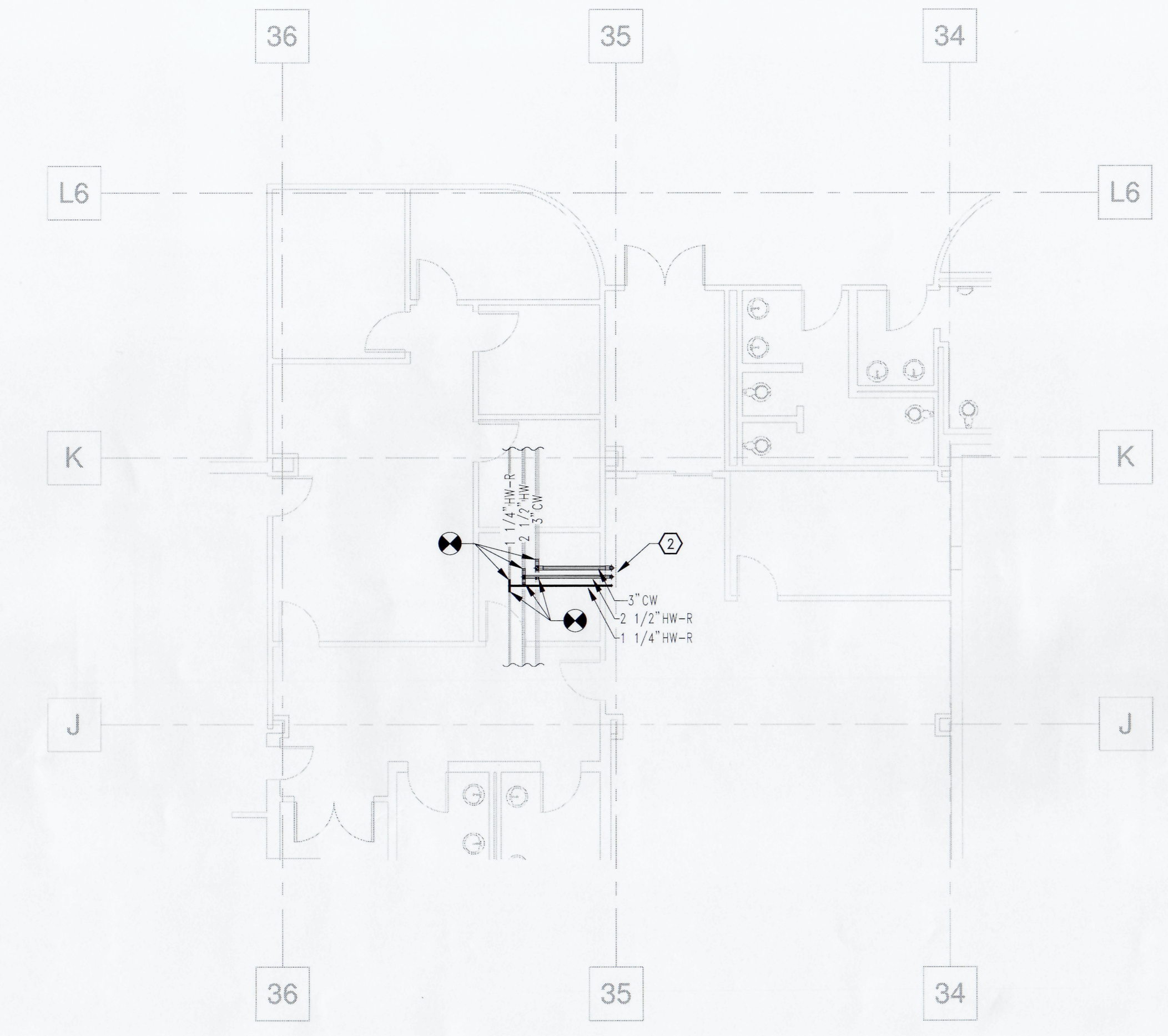
	CONSULTANTS	ARCHITECT/ENGINEER OF RECORD	STAMP	Office of Construction and Facilities Management	Drawing Title	Phase	Project Title	Project Number
	APOGEE ENGINEERS ARCHITECTS 9449 PRIORITY WAY WEST DRIVE STE 240 INDIANAPOLIS, IN 46240	INSIGHT ENGINEERING, PLLC 201 S. CHESTER, SUITE B LITTLE ROCK, AR 72201	LACEY FIRE PROTECTION ENGINEERING, LLC P.O. BOX 723 GREENBRIER AR 72058	A/E JohnsonDanforth & Associates 2200 N. RODNEY PARHAM ROAD SUITE 210 LITTLE ROCK, AR 72212 801-404-8811 jda@johnsondanforth.com JDA PROJECT #: 2018.001		RENOVATION PLAN - THIRD LEVEL - DOMESTIC WATER	CONSTRUCTION DOCUMENTS	DESIGN PRIVATE/SEMI-PRIVATE BED SPACES FOR 3H
Revisions:	Date:	FULLY SPRINKLERED		Approved: Project Director	MISSION CRITICAL CONSTRUCTION DOCUMENTS	EJT HEALTHCARE CENTER	Location	Drawing Number
				U.S. Department of Veterans Affairs	2021.03.24	Checked KCK	Drawn CJC	PL102

3/24/2021 10:10:23 AM
 BIM 360://19-029 Renovation 3H Bed Spaces(19-029) - 3H Height Central Mat Rk 2D.rvt
 VA FORM 08 - 6231

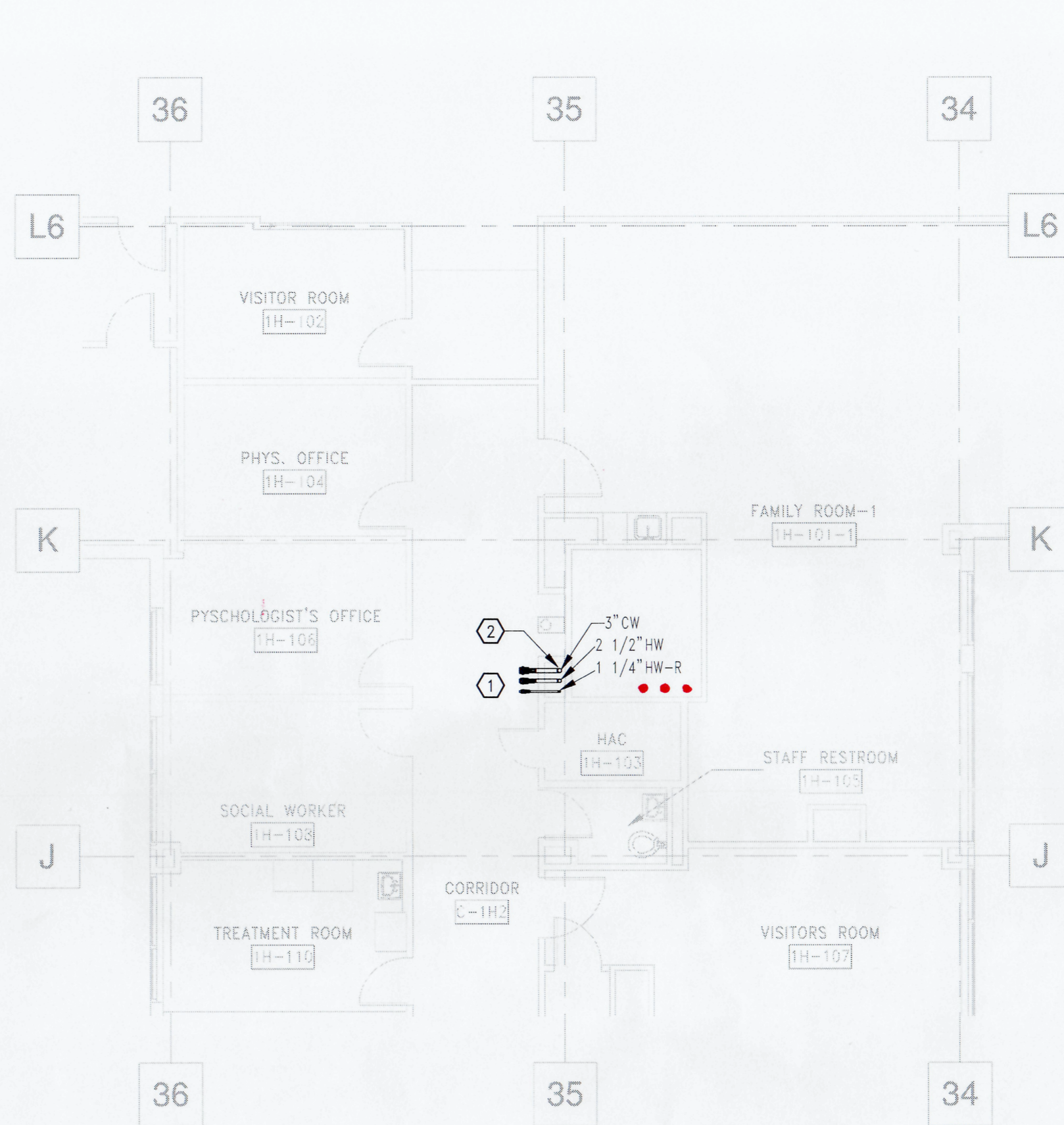
KEYED NOTES

1. COLD WATER, HOT WATER, AND HOT WATER RETURN, VALVED AFTER EXITING THE CHASE ABOVE CEILING FOR FUTURE CONNECTION.
2. COLD WATER, HOT WATER, AND HOT WATER RETURN IN CHASE FROM GROUND FLOOR UP TO THIRD FLOOR.

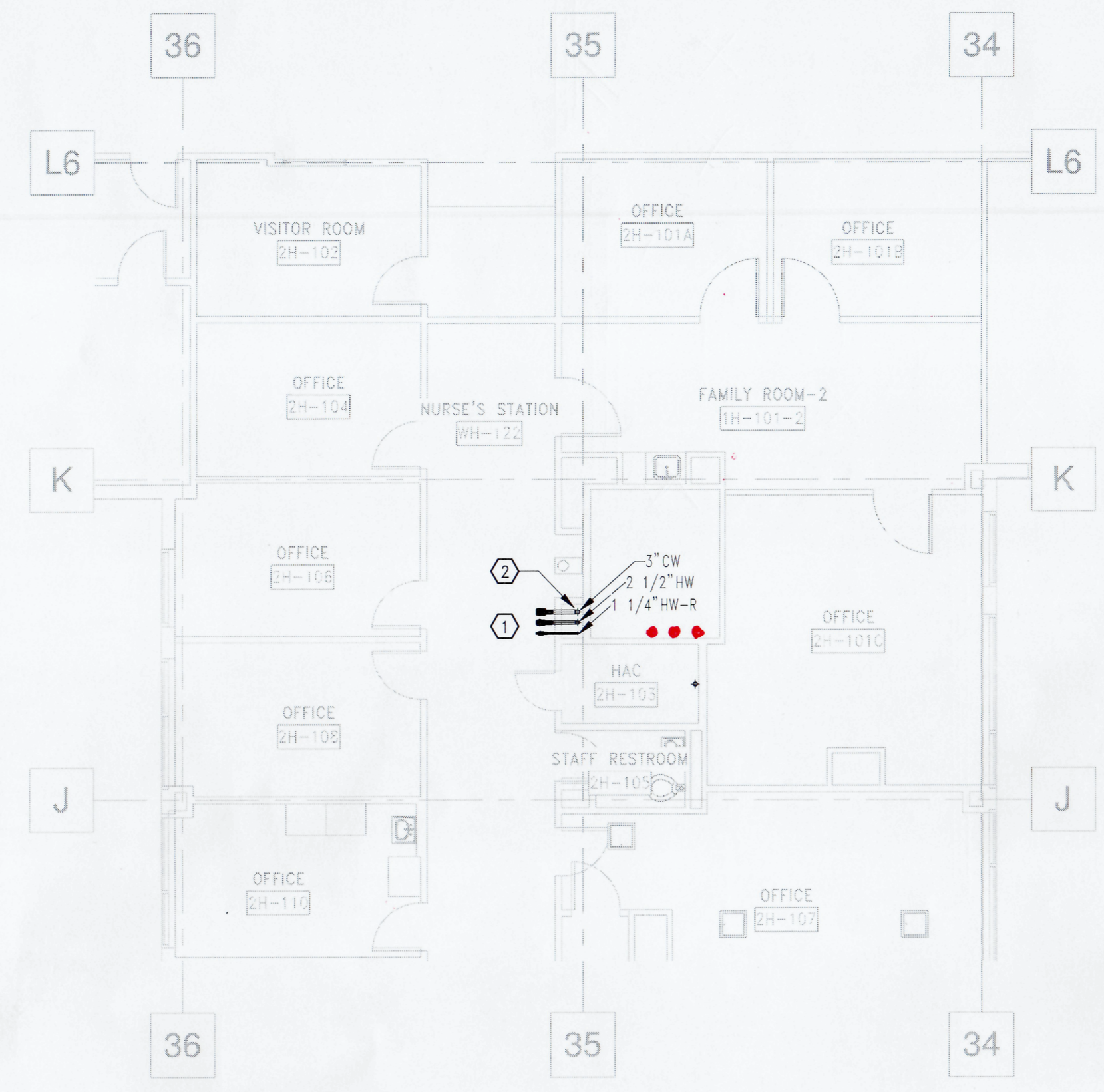
As-Builts
11/15/2023
CSUSA



C2 RENOVATION PLAN - GROUND LEVEL - DOMESTIC WATER
1/8" = 1'-0"
F.F.E. = 299.50'



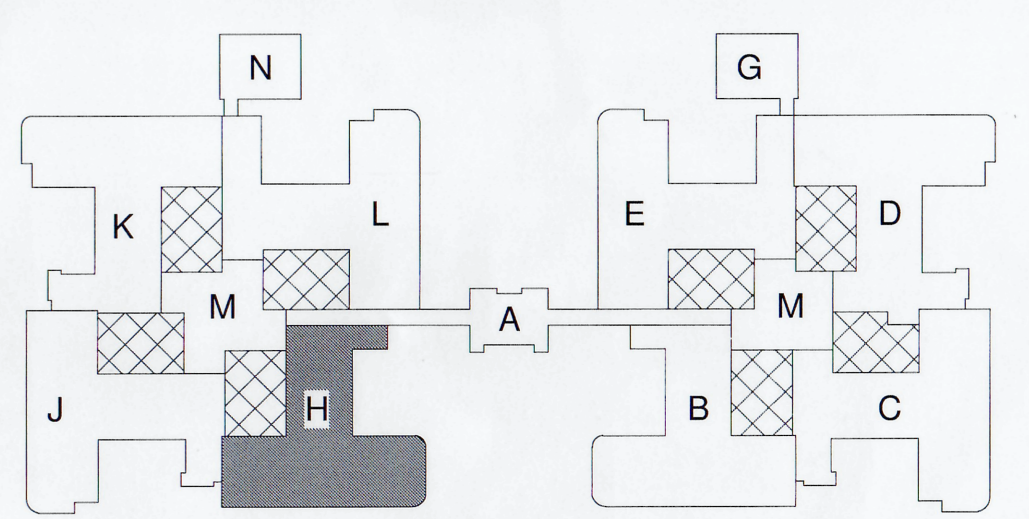
C6 RENOVATION PLAN - FIRST LEVEL - DOMESTIC WATER
1/8" = 1'-0"
F.F.E. = 309.50'



F4 RENOVATION PLAN - SECOND LEVEL - DOMESTIC WATER
1/8" = 1'-0"
F.F.E. = 319.50'

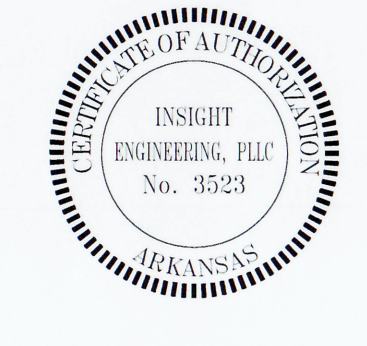
PLUMBING LEGEND

SYMBOL	DESCRIPTION
	NEW EQUIPMENT
	EXISTING EQUIPMENT TO REMAIN
	EXISTING EQUIPMENT TO BE DEMOLISHED
	PIPING TO BE DEMOLISHED
	COLD WATER (CW)
	HOT WATER (HW)
	HOT WATER RETURN (HWR)
	SANITARY SEWER
	VENT
	MEDICAL GAS AIR (A)
	MEDICAL GAS VACUUM (V)
	MEDICAL GAS OXYGEN (O)
	BALL VALVE
	GATE VALVE
	CHECK VALVE
	PLUMBING FIXTURE DESIGNATION



KEY PLAN

MISSION CRITICAL
CONSTRUCTION DOCUMENTS



CONSULTANTS

APOGEE Engineers Architects No. 3224	INSIGHT ENGINEERING, PLLC ENGINEERING, PLLC	Lacey Fire Protection ENGINEERING, LLC
INTERIOR DESIGN APOGEE ENGINEERS ARCHITECTS 3449 PRIORITY WAY WEST DRIVE STE 240 INDIANAPOLIS, IN 46240	MEP ENGINEER INSIGHT ENGINEERING, PLLC 201 S. CHESTER, SUITE B LITTLE ROCK, AR 72201	FIRE PROTECTION LACEY FIRE PROTECTION ENGINEERING, LLC P.O. BOX 723 GREENBRIER AR 72058

ARCHITECT/ENGINEER OF RECORD

A/E
JohnsonDanforth & Associates
2200 N. RODNEY PARHAM ROAD
SUITE 210
LITTLE ROCK, AR 72212
501-404-4811
jda@JohnsonDanforth.com
JDA PROJECT #: 2018.001

STAMP

Office of Construction and Facilities Management

VA U.S. Department of Veterans Affairs

Renovation Plan - Domestic Water

Approved: Project Director

CONSTRUCTION DOCUMENTS

FULLY SPRINKLERED

Project Title DESIGN PRIVATE/SEMI-PRIVATE BED SPACES FOR 3H	Project Number 598-18-104
Location EJT HEALTHCARE CENTER	Building Number B-170
Issue Date 2021.03.24	Checked KCK
Drawn CJC	Drawing Number PL103

3/24/2021 10:27:47 AM
3/24/2021 10:27:47 AM
3/24/2021 10:27:47 AM