

*Quality People. Building Solutions.*

Comfort Systems USA (Arkansas), Inc.  
P.O. Box 16620  
Little Rock, AR 72231  
Phone 501-834-3320  
Fax 501-834-5416

**Date:** 1/30/2023  
**Return Request:** 2/6/2023  
**Project:** New Dormitories – Bldg. 6  
**Supplier:** Little Rock Winnelson  
**Manufacturer:** Various  
**Submittal:** Commercial Water Closets Re-Submittal #1  
**Submittal Number:** 22 42 13.13-01  
**Drawing # and Installation:** Plumbing Drawings

**ARCHITECT**

Stocks Mann Architects  
401 W. Capitol, Suite 402  
Little Rock, AR 72201  
501-370-9207

**ENGINEER**

Bernhard TME  
1 Allied Drive #2600, Building 2  
Little Rock, AR 72202  
501-666-6776

**GENERAL CONTRACTOR**

Alessi Keyes Construction  
10623 Maumelle Blvd.  
N. Little Rock, AR 72113  
501-225-6699

**MECHANICAL SUBCONTRACTOR**

Comfort Systems USA (Arkansas), Inc.  
9924 Landers Rd.  
N. Little Rock, AR 72117  
501-834-3320

Notes:

**CSUSA PROJECT NO.**

**22-102**

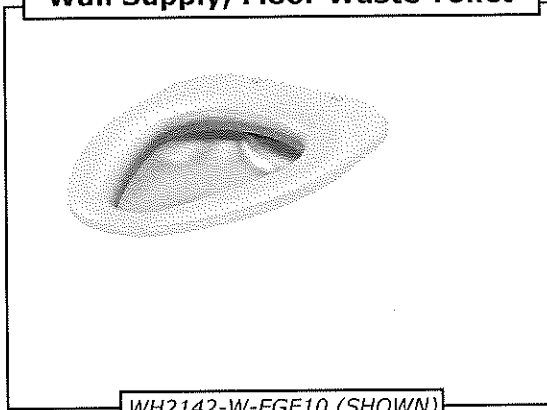
[jon@comfortar.com](mailto:jon@comfortar.com)

**ALESSI KEYES CONSTRUCTION**  
**REVIEWED FOR GENERAL COMPLIANCE**  
**WITH CONTRACT DOCUMENTS**  
Charley Dawson 2/1/2023

WC-1 WATER CLOSET



**WH2142-W-3 / WH2142ADA-W-3  
Wall Supply, Floor Waste Toilet**



WH2142-W-EGE10 (SHOWN)

**WH2142-T-3 / WH2142ADA-T-3  
Top Supply, Floor Waste Toilet**



WH2142-T-EGE10 (SHOWN)

**TECHNICAL ASSISTANCE TOLL FREE TELEPHONE NUMBER:  
1.800.591.9360**

Technical Assistance E-mail: [Fieldservice@acorneng.com](mailto:Fieldservice@acorneng.com)



## ! IMPORTANT

**Important:** Some options may slightly alter installation. To ensure proper installation review the manual thoroughly and verify rough-ins before beginning any work. File this manual with the owner or maintenance personnel upon completion of installation.

MGI Engineered Plumbing Products are designed in accord with applicable National Codes and Standards, which may include UPC, ANSI, and ASSE. Installers should use industry standard practice for details not covered within Manual. Prior to installation, supply lines must be flushed of all foreign material such as pipe dope, chips, or solder. Debris or foreign material in water supply may damage valve. An appropriate thread sealant is recommended on all threaded waste and supply connections to reduce the possibility of leaks. Toilet requires a minimum of 25 PSI flow pressure and uses a minimum water consumption of 1.28 GPF.

WH2142 Toilet fixtures are supported on-floor and are not intended for use with In-Wall Support Carriers. Depending on wall construction, rear wall may require backing for mounting fixture to wall. Installer provided wall anchors and wall anchoring hardware must be appropriate for wall construction.

ANSI, UFAS or ADA compliance is subject to the interpretation and requirements of the local code authority and is the responsibility of the installer for verification.

### TOILET WASTE CONNECTIONS

Units with Wall Waste Outlets are provided using a 5-1/2" Diameter Recessed Gasket Flange and Floor Waste units will receive a 7-1/2" Diameter Recessed Gasket Flange. The Stainless Steel Gasket Flange is welded in place to the Toilet P-trap, and is fabricated to be flush with the back of the unit (wall outlet) or flush with the bottom of the fixture (floor outlet). The depth of the Recessed Gasket Flange is 1/2" deep.

The Recessed Gasket Flange is intended for installation and assembly with a common 3" or 4" Toilet Closet Flange Fitting, Yoke Adapter or similar. The Recessed Gasket Flange provided includes (2) 5/16" UNC Threaded Captive Nuts, which are on 6" centers. These tapings allow for assembly of Closet Bolts and may assist to provide for the Squeeze of the Gasket to seal the waste connection. Certain installation conditions may not require using the tapings. Choice of the Gasket material is up to the installer however, it is common for Neoprene or Felt Gaskets to be used with Wall Waste Toilet units.

**Please refer to the Link or QR code provided.**

For Cleaning & Care Guide:

<https://www.whitehallmfg.com/uploads/fileLibrary/9900-008-W01.pdf>



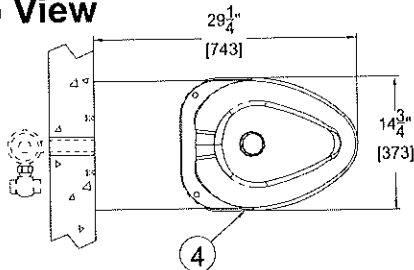


# TECHNICAL DIMENSIONS

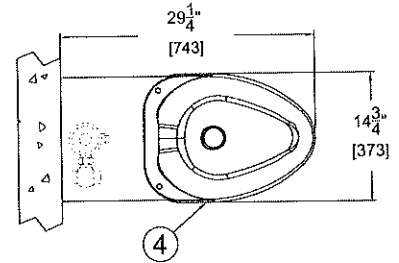
## WALL SUPPLY

## TOP SUPPLY

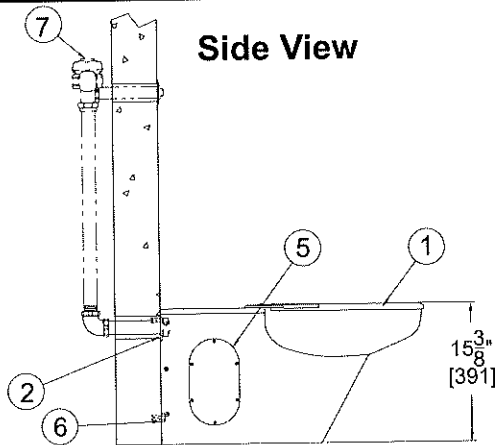
Top View



Top View

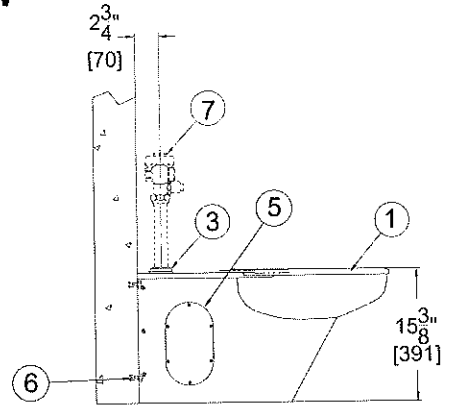


Side View



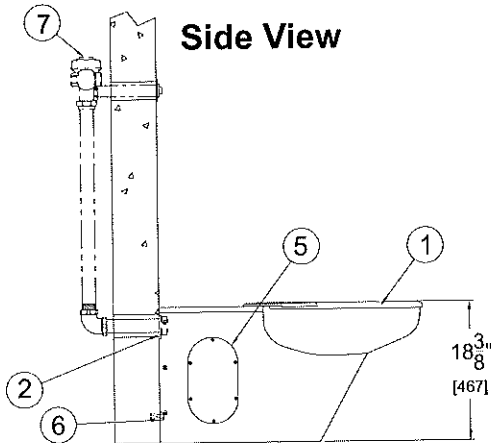
WH2142-W-3

Side View



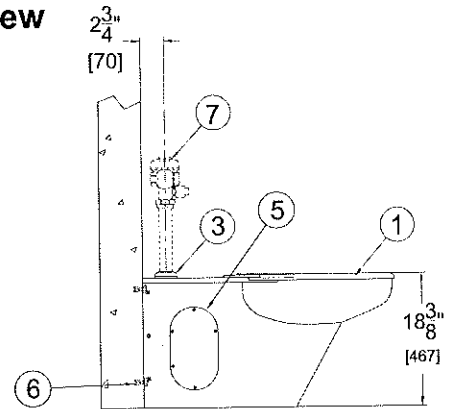
WH2142-T-3

Side View



WH2142ADA-W-3

Side View



WH2142ADA-T-3

NOTE: All dimensions are in Inches (mm)

- [1] Toilet
- [2] 1-1/2" NPT Female Wall Supply Flush Inlet Connection
- [3] 1-1/2" NPT Male Top Supply Flush Inlet Connection
- [4] Ligature Resistant Toilet Seat Cover
- [5] Access Panel with Vandal Resistant Fasteners

- [6] Wall Anchors: Provided by others to suit wall construction
- [7] Flush Valve Shown for reference only and is not included. Refer to optional Flush Valve Access Panel and Cover for additional details



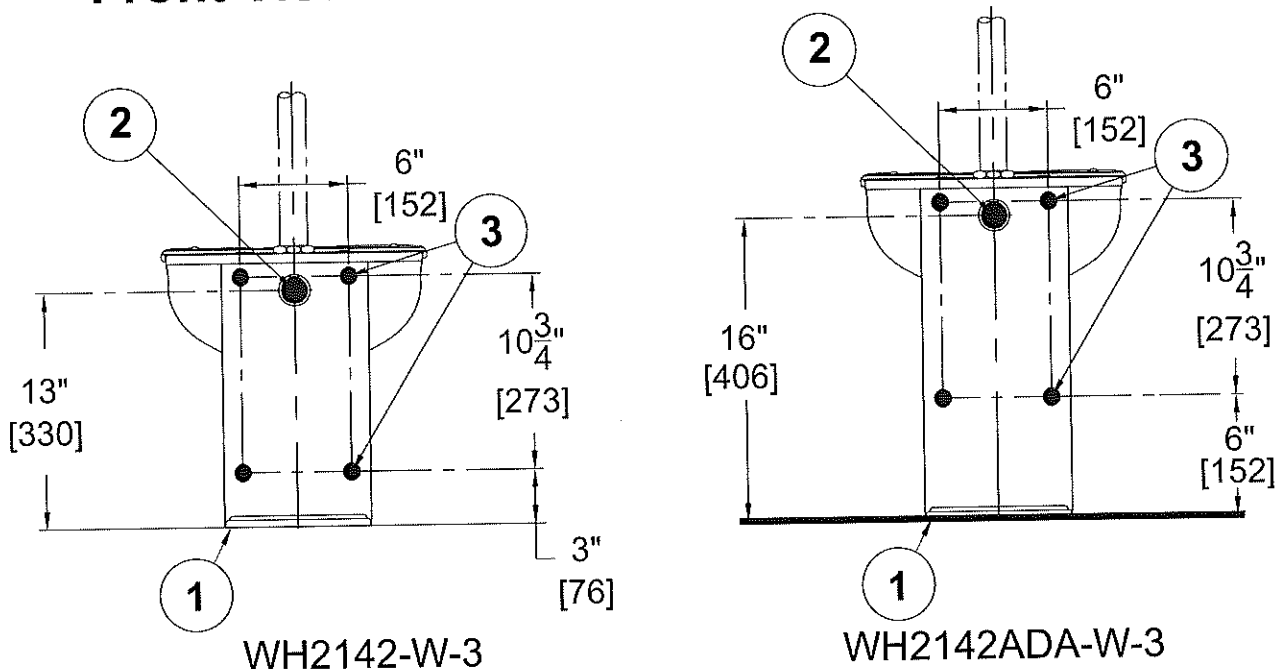
# ROUGH-IN DIMENSIONS

## ! IMPORTANT

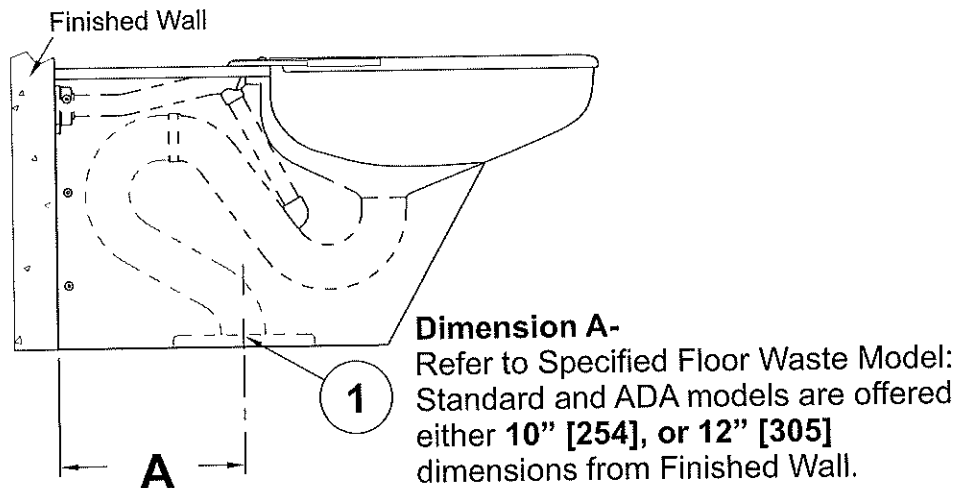
Ligature Resistant Toilets require specific Flush Valve model to suit application for Supply Type (Concealed / Exposed), Flow Rate and ADA Accessibility (when applicable). Refer to the following WhiteHall® Accessories:

- Concealed Flush Valve Access Panel: Model WH2898 and WHD2898 for ADA
- Exposed Flush Valve Cover: WH2802-SLPT and WH2802-SLPT -ADA

## WALL SUPPLY Front View



## Side View



- [1] 7-1/2" Recessed Gasket Flange (Flush with bottom of fixture for connection to Closet Flange)
- [2] 1" NPT Female Flush Valve Supply Inlet
- [3] 5/8" Dia. Openings provided for Mounting to required Wall Anchors and/or Wall Backing.



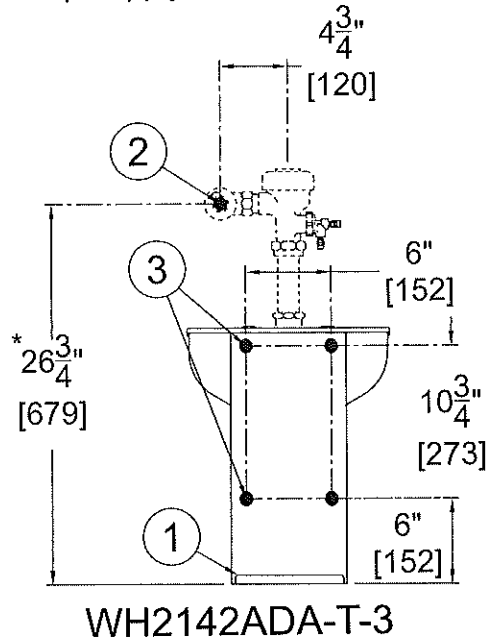
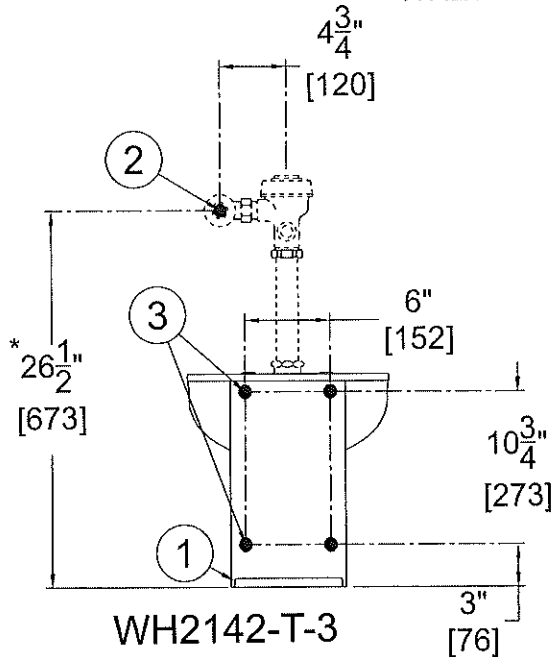
## ROUGH-IN DIMENSIONS

### ! IMPORTANT

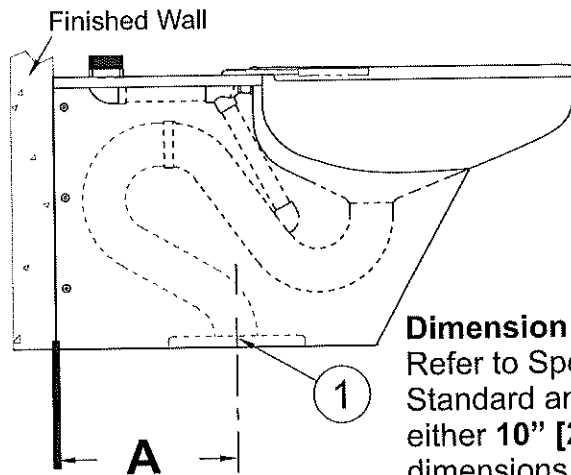
Ligature Resistant Toilets require specific Flush Valve model to suit application for Supply Type (Concealed / Exposed), Flow Rate and ADA Accessibility (when applicable). Refer to the following WhiteHall® Accessories:  
 - Concealed Flush Valve Access Panel: Model WH2898 and WHD2898 for ADA  
 - Exposed Flush Valve Cover: WH2802-SLPT and WH2802-SLPT-ADA

### TOP SUPPLY Front View

\*Flush Valve Supply Inlet dimensions provided are for reference only. Dimensions shown will coordinate with Whitehall Manufacturing optional models WH802-SLPT and WH2802-SLPT-ADA Top Supply Flush Valve covers.



### Side View

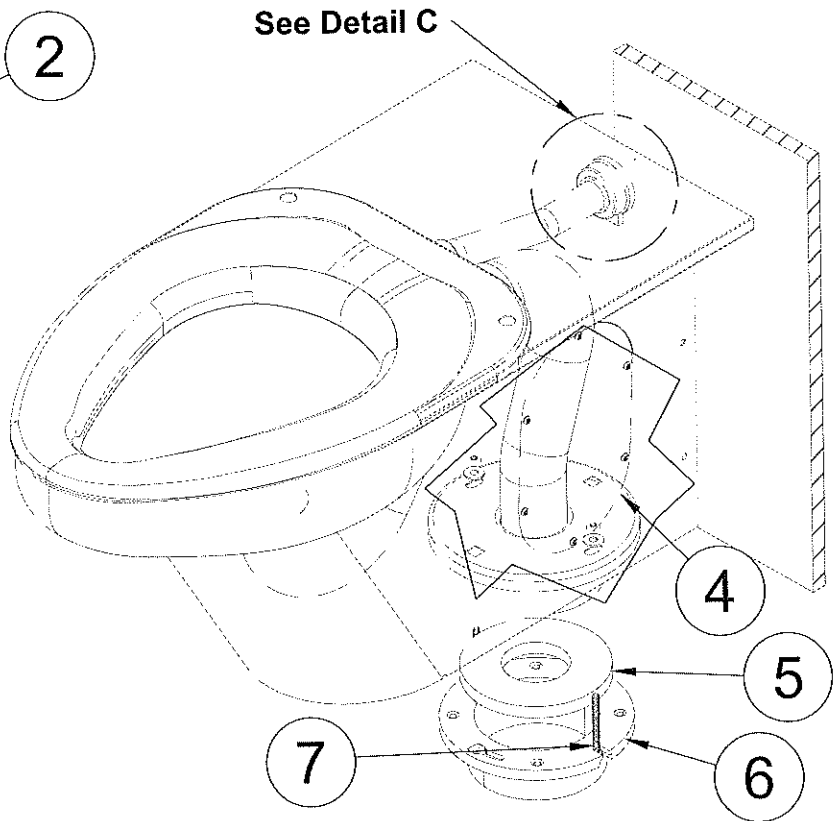
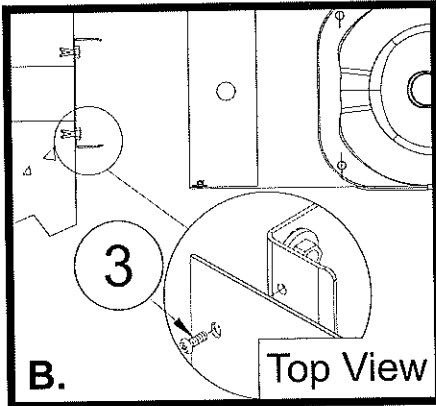
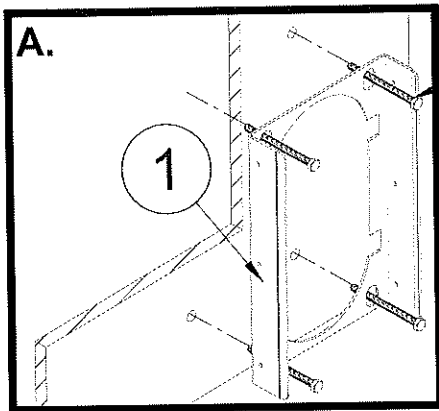


**Dimension A-**  
 Refer to Specified Floor Waste Model:  
 Standard and ADA models are offered  
 either 10" [254], or 12" [305]  
 dimensions from Finished Wall.

- [1] 7-1/2" Recessed Gasket Flange (Flush with bottom of fixture for connection to Closet Flange)
- [2] 1" NPT Female Flush Valve Supply Inlet
- [3] 5/8" Dia. Openings provided for Mounting to required Wall Anchors and/or Wall Backing.



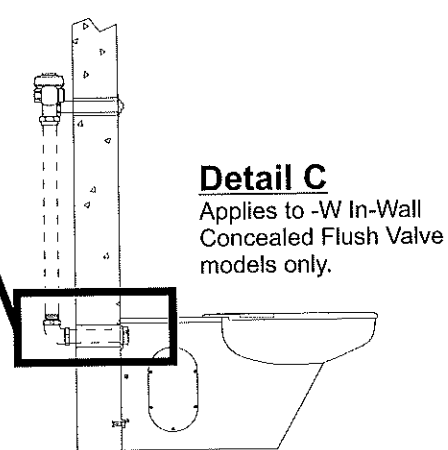
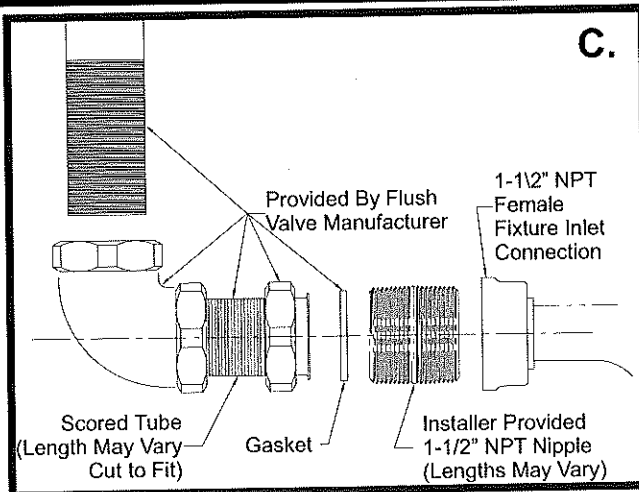
# INSTALLATION DETAILS



## INSTALLATION

- A. Position Mounting Channel [1] onto fixture side of Reinforced Wall locating as indicated. Wall Anchors and Fasteners [2] are by others. **See Detail A.**
- B. Place Toilet up against wall. Attach toilet housing to Mounting Channel [1] using 1/4-20 Screws [3]. **Detail B.**
- C. Remove Access Panel and Fasteners [4] make up toilet waste connection.
- D. Install Flush Valve to fixture as required per manufacture's recommendations.

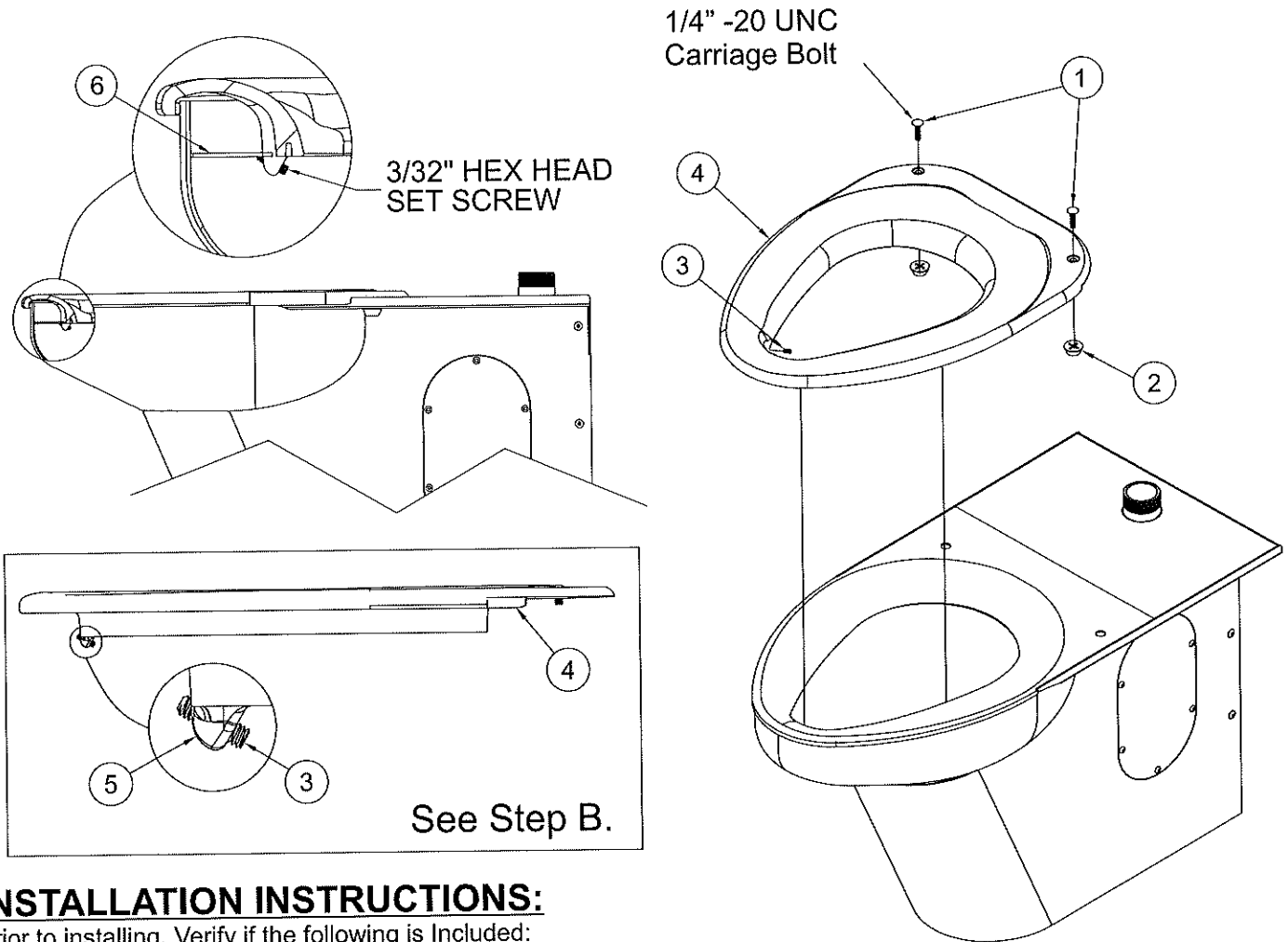
- [1] Mounting Channel (Provided)
- [2] Wall Mounting Hardware (By Others)
- [3] 1/4-20 Screws
- [4] Access Panel and 1/4"-20 Fasteners
- [5] Appropriate Toilet Gasket (By Others)
- [6] Closet Flange Connection to Waste (By Others)
- [7] Closet Flange Hardware (By Others)



**Detail C**  
Applies to -W In-Wall Concealed Flush Valve models only.



# PLASTIC SEAT INSTALLATION



## INSTALLATION INSTRUCTIONS:

Prior to installing, Verify if the following is Included:  
Carriage Bolts [1], Tapered Nuts [2], Front Set Screw [3], and Toilet Seat [4].

- A. Partially install Front Set Screw [3] into the Mounting Tab [5] located at the front of the Toilet Seat [4]. Set Screw [3] should not pass beyond Mounting Tab [5].
- B. Position the Toilet Seat [4] onto Toilet, and press down firmly.
- C. Fasten the Toilet Seat [4] to the Toilet by using the Carriage Bolts [1] on top of the Toilet Seat [4] and tighten by installing the Tapered Nuts [2] from the underside of the Toilet rim.
- D. With Toilet Seat [4] Fastened, pressed downward on Toilet Seat [4] and tighten the Front Set Screw [3] until it firmly engages under the Flushing Rim [6].

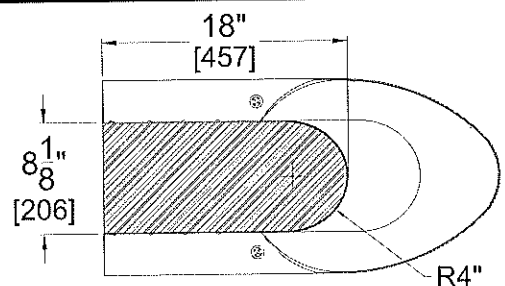
NOTE: If Toilet Seat has Hole Plugs, remove them prior to installing Toilet.

## SLOPING FLOORS:

When required for sloping floors, refer to detail to create a level pad for on-floor Toilet Housing.

### IMPORTANT:

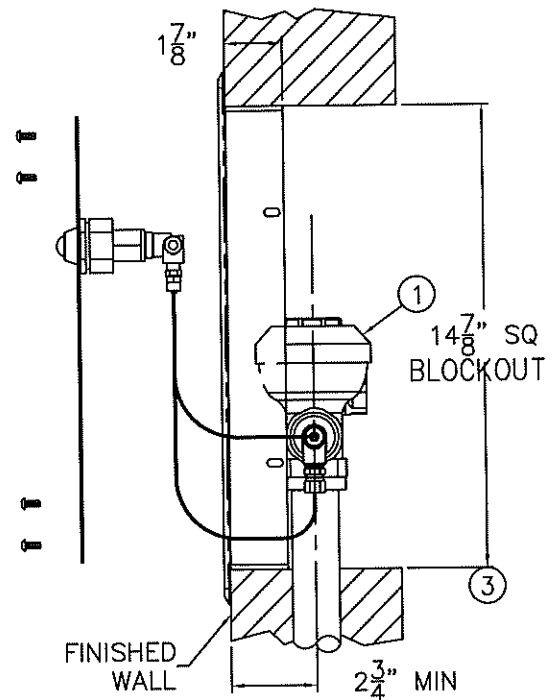
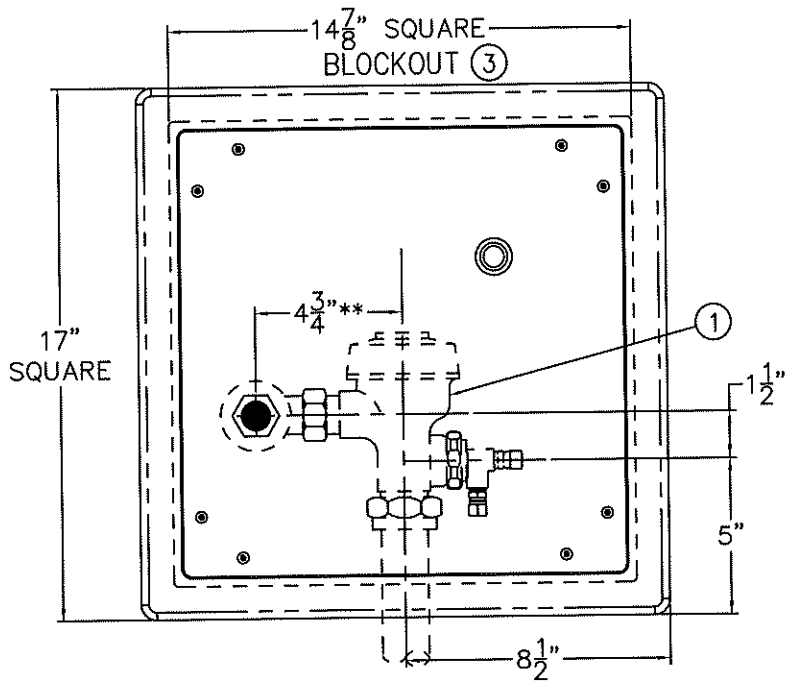
Sloping floor detail is provided for reference only and should not be considered as a recommendation by the fixture manufacturer. Installer assumes all responsibility to alterations of site conditions and affected fixture dimensions.



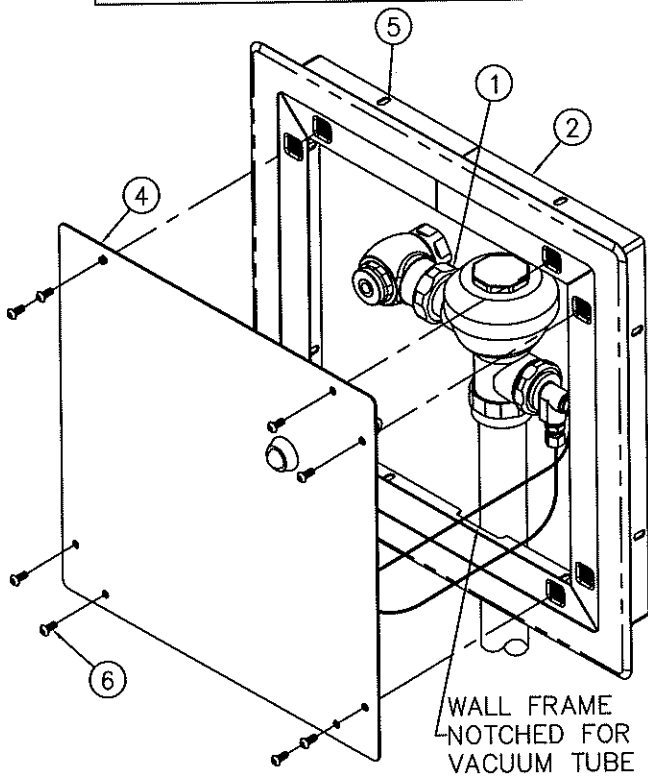




REFER TO ADA GUIDELINES FOR COMPLETE INSTALLATION REQUIREMENTS. BUTTON SHOULD BE LOCATED ON THE OPEN SIDE OF THE FIXTURE WITH A MAXIMUM HEIGHT OF 48" AFF.



**IMPORTANT:** PRIOR TO INSTALLATION VERIFY GRAB BAR STYLE BEING USED. Grab bar style with closure plate may interfere affecting location of Access Panel. Verify site conditions, including toilet fixture. Whitehall Mfg. assumes no responsibility for specification of conflicting materials.



**NOTES:**

READ ALL INSTRUCTIONS THOROUGHLY. PANEL ASSEMBLY SHOULD NOT BE MOUNTED UNTIL FINISHED WALL HAS BEEN COMPLETED AND FIXTURE INSTALLED WITH HYDRAULIC FLUSH VALVE (1) PROVIDED. THE FLUSH VALVE ACCESS PANEL ASSEMBLY IS A FINISHED PRODUCT; EXERCISE CARE TO AVOID DAMAGING WALL FRAME/PANEL OR OTHERWISE MARRING POWDER COAT FINISH.

**INSTALLATION INSTRUCTIONS:**

- A-BLOCK OUT AND PROVIDE SUPPORT BACKING FOR WALL FRAME (2) USING BLOCKOUT DIMENSIONS (3) INDICATED. POSITION WALL FRAME (2) ON CENTERLINE OF FIXTURE WITH BOTTOM OF WALL FRAME 2-1/2" ABOVE INTEGRAL FLOOD RIM OR TOP OF URINAL.
- B-INSTALL FIXTURE AND CONCEALED HYDRAULIC FLUSH VALVE MAKING UP CONNECTIONS AS REQUIRED. REFER TO FIXTURE AND FLUSH VALVE MANUFACTURER INSTALLATION SHEETS FOR ADDITIONAL INFORMATION.
- C-REMOVE STAINLESS STEEL PANEL (4) AND INSTALL WALL FRAME (2) ONTO FINISH WALL. SECURE WITH ANCHORING HARDWARE PROVIDED BY THE INSTALLER THROUGH Ø1/4" x 1/2" LONG SLOTS (5) PROVIDED (8 PLACES).
- D-COMplete the installation by assembling panel (4) TO INSTALLED WALL FRAME (2) WITH HARDWARE (6) PROVIDED.

**WHITEHALL MANUFACTURING**  
 P.O. BOX 3527 Industry, CA 91744  
 15125 Proctor Ave Industry, CA 91746  
 (626) 968-6681 FAX (626) 855-4862

TITLE **LIGATURE RESISTANT, FLUSH VALVE ACCESS PANEL, WH2898-ADA**

MANUFACTURE DATE  
 OCTOBER 2015  
 TO PRESENT

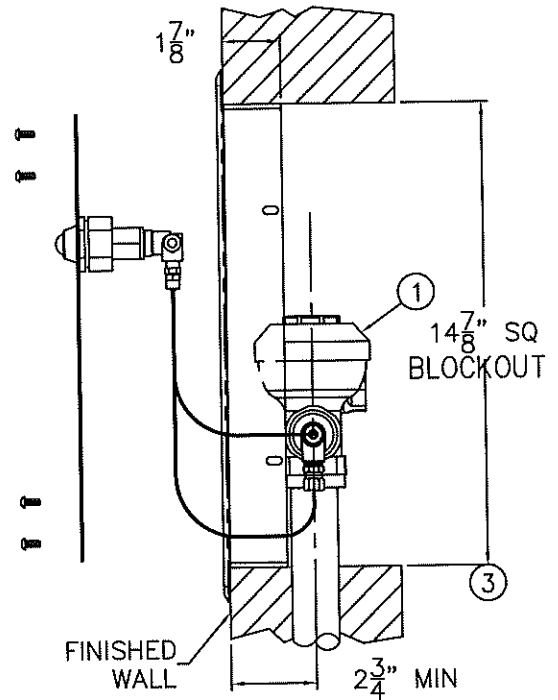
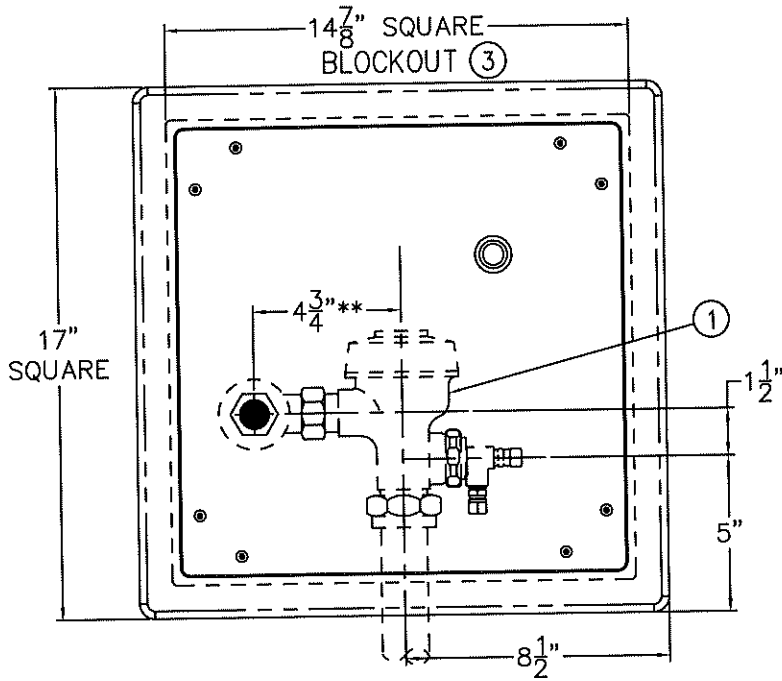
DATE ISSUED  
 04/12/17  
 DATE REVISED  
 03/01/21

DRAWING NUMBER  
 9918-014-001

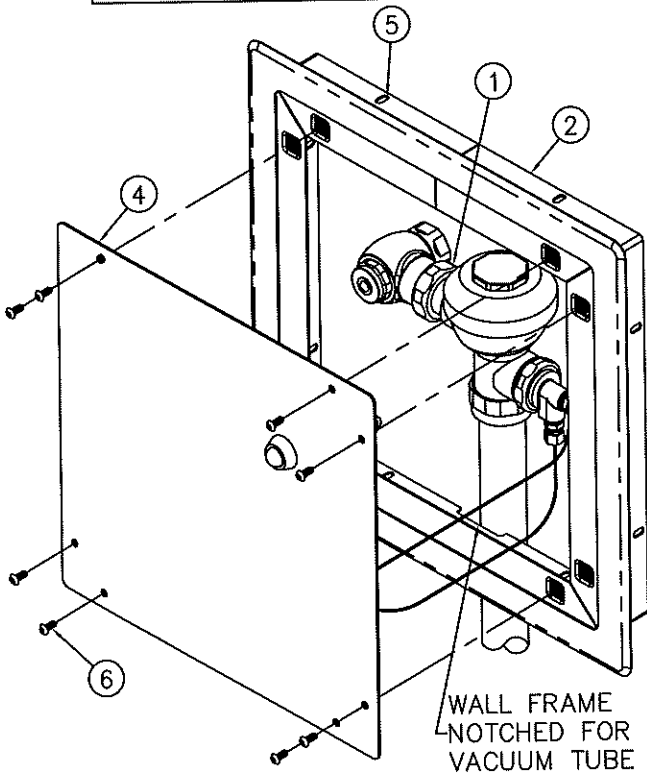
WC-2 WATER CLOSET



REFER TO ADA GUIDELINES FOR COMPLETE INSTALLATION REQUIREMENTS. BUTTON SHOULD BE LOCATED ON THE OPEN SIDE OF THE FIXTURE WITH A MAXIMUM HEIGHT OF 48" AFF.



**IMPORTANT:** PRIOR TO INSTALLATION VERIFY GRAB BAR STYLE BEING USED. Grab bar style with closure plate may interfere affecting location of Access Panel. Verify site conditions, including toilet fixture. Whitehall Mfg. assumes no responsibility for specification of conflicting materials.



**NOTES:**

READ ALL INSTRUCTIONS THOROUGHLY. PANEL ASSEMBLY SHOULD NOT BE MOUNTED UNTIL FINISHED WALL HAS BEEN COMPLETED AND FIXTURE INSTALLED WITH HYDRAULIC FLUSH VALVE (1) PROVIDED. THE FLUSH VALVE ACCESS PANEL ASSEMBLY IS A FINISHED PRODUCT; EXERCISE CARE TO AVOID DAMAGING WALL FRAME/PANEL OR OTHERWISE MARRING POWDER COAT FINISH.

**INSTALLATION INSTRUCTIONS:**

- A-BLOCK OUT AND PROVIDE SUPPORT BACKING FOR WALL FRAME (2) USING BLOCKOUT DIMENSIONS (3) INDICATED. POSITION WALL FRAME (2) ON CENTERLINE OF FIXTURE WITH BOTTOM OF WALL FRAME 2-1/2" ABOVE INTEGRAL FLOOD RIM OR TOP OF URINAL.
- B-INSTALL FIXTURE AND CONCEALED HYDRAULIC FLUSH VALVE MAKING UP CONNECTIONS AS REQUIRED. REFER TO FIXTURE AND FLUSH VALVE MANUFACTURER INSTALLATION SHEETS FOR ADDITIONAL INFORMATION.
- C-REMOVE STAINLESS STEEL PANEL (4) AND INSTALL WALL FRAME (2) ONTO FINISH WALL. SECURE WITH ANCHORING HARDWARE PROVIDED BY THE INSTALLER THROUGH Ø1/4" x 1/2" LONG SLOTS (5) PROVIDED (8 PLACES).
- D-COMplete the installation by assembling panel (4) TO INSTALLED WALL FRAME (2) WITH HARDWARE (6) PROVIDED.



WHITEHALL MANUFACTURING  
P.O. BOX 3527 Industry, CA 91744  
15125 Proctor Ave Industry, CA 91746  
(626) 968-6681 FAX (626) 855-4862

TITLE

LIGATURE RESISTANT, FLUSH VALVE ACCESS PANEL, WH2898-ADA

MANUFACTURE DATE

OCTOBER 2015  
TO PRESENT

DATE ISSUED

04/12/17

DATE REVISED

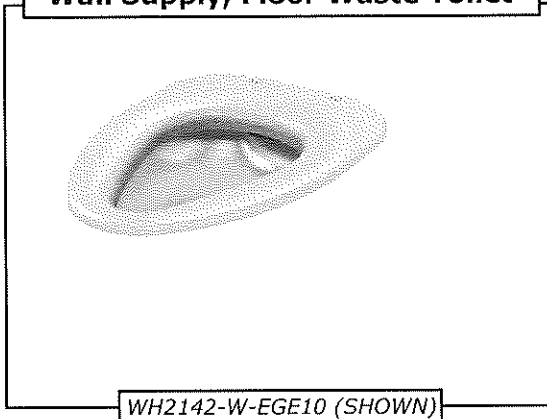
03/01/21

DRAWING NUMBER

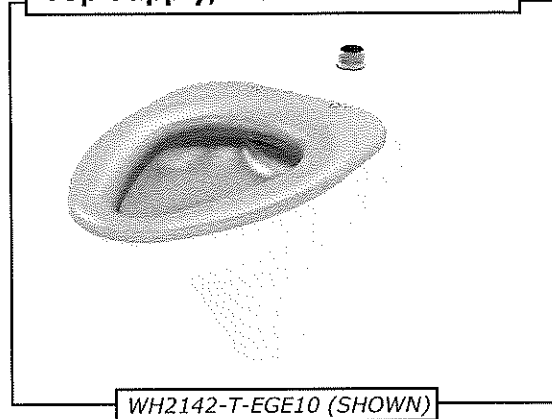
9918-014-001



**WH2142-W-3 / WH2142ADA-W-3  
Wall Supply, Floor Waste Toilet**



**WH2142-T-3 / WH2142ADA-T-3  
Top Supply, Floor Waste Toilet**



**TECHNICAL ASSISTANCE TOLL FREE TELEPHONE NUMBER:  
1.800.591.9360**

Technical Assistance E-mail: [Fieldservice@acorneng.com](mailto:Fieldservice@acorneng.com)



## **IMPORTANT**

**Important:** Some options may slightly alter installation. To ensure proper installation review the manual thoroughly and verify rough-ins before beginning any work. File this manual with the owner or maintenance personnel upon completion of installation.

MGI Engineered Plumbing Products are designed in accord with applicable National Codes and Standards, which may include UPC, ANSI, and ASSE. Installers should use industry standard practice for details not covered within Manual. Prior to installation, supply lines must be flushed of all foreign material such as pipe dope, chips, or solder. Debris or foreign material in water supply may damage valve. An appropriate thread sealant is recommended on all threaded waste and supply connections to reduce the possibility of leaks. Toilet requires a minimum of 25 PSI flow pressure and uses a minimum water consumption of 1.28 GPF.

WH2142 Toilet fixtures are supported on-floor and are not intended for use with In-Wall Support Carriers. Depending on wall construction, rear wall may require backing for mounting fixture to wall. Installer provided wall anchors and wall anchoring hardware must be appropriate for wall construction.

ANSI, UFAS or ADA compliance is subject to the interpretation and requirements of the local code authority and is the responsibility of the installer for verification.

### **TOILET WASTE CONNECTIONS**

Units with Wall Waste Outlets are provided using a 5-1/2" Diameter Recessed Gasket Flange and Floor Waste units will receive a 7-1/2" Diameter Recessed Gasket Flange. The Stainless Steel Gasket Flange is welded in place to the Toilet P-trap, and is fabricated to be flush with the back of the unit (wall outlet) or flush with the bottom of the fixture (floor outlet). The depth of the Recessed Gasket Flange is 1/2" deep.

The Recessed Gasket Flange is intended for installation and assembly with a common 3" or 4" Toilet Closet Flange Fitting, Yoke Adapter or similar. The Recessed Gasket Flange provided includes (2) 5/16" UNC Threaded Captive Nuts, which are on 6" centers. These tapings allow for assembly of Closet Bolts and may assist to provide for the Squeeze of the Gasket to seal the waste connection. Certain installation conditions may not require using the tapings. Choice of the Gasket material is up to the installer however, it is common for Neoprene or Felt Gaskets to be used with Wall Waste Toilet units.

**Please refer to the Link or QR code provided.**

For Cleaning & Care Guide:

<https://www.whitehallmfg.com/uploads/fileLibrary/9900-008-W01.pdf>



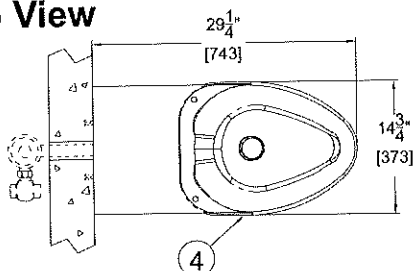


# TECHNICAL DIMENSIONS

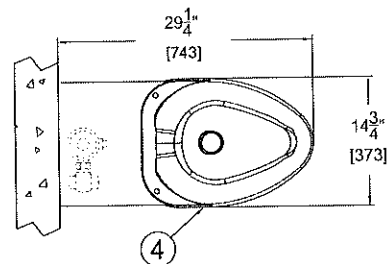
## WALL SUPPLY

## TOP SUPPLY

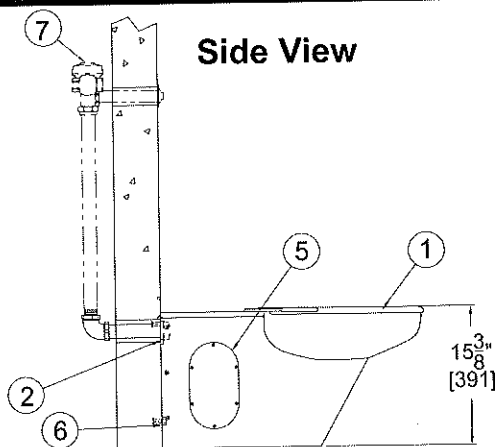
Top View



Top View

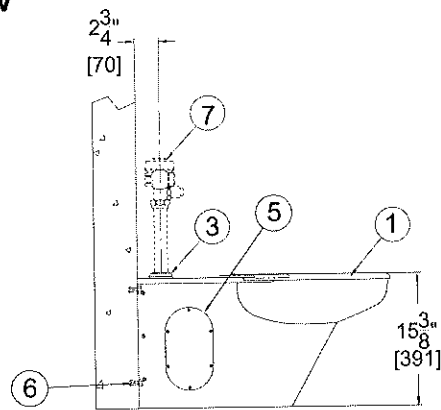


Side View



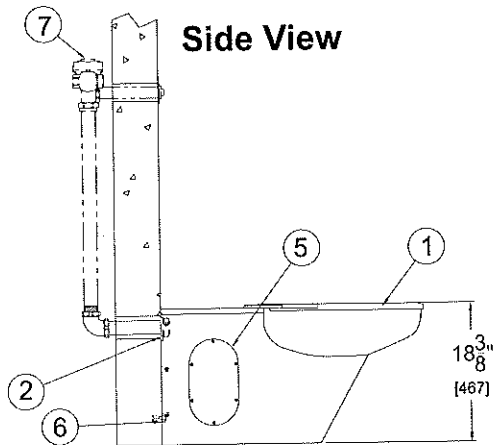
WH2142-W-3

Side View



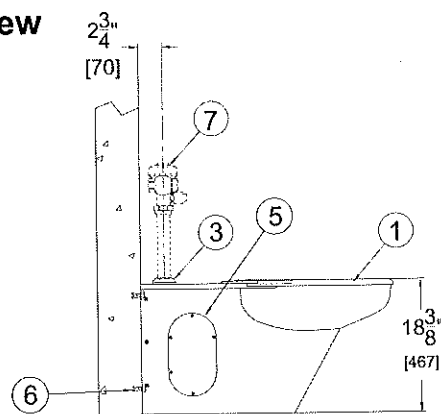
WH2142-T-3

Side View



WH2142ADA-W-3

Side View



WH2142ADA-T-3

NOTE: All dimensions are in Inches (mm)

- [1] Toilet
- [2] 1-1/2" NPT Female Wall Supply Flush Inlet Connection
- [3] 1-1/2" NPT Male Top Supply Flush Inlet Connection
- [4] Ligature Resistant Toilet Seat Cover
- [5] Access Panel with Vandal Resistant Fasteners

- [6] Wall Anchors: Provided by others to suit wall construction
- [7] Flush Valve Shown for reference only and is not included. Refer to optional Flush Valve Access Panel and Cover for additional details

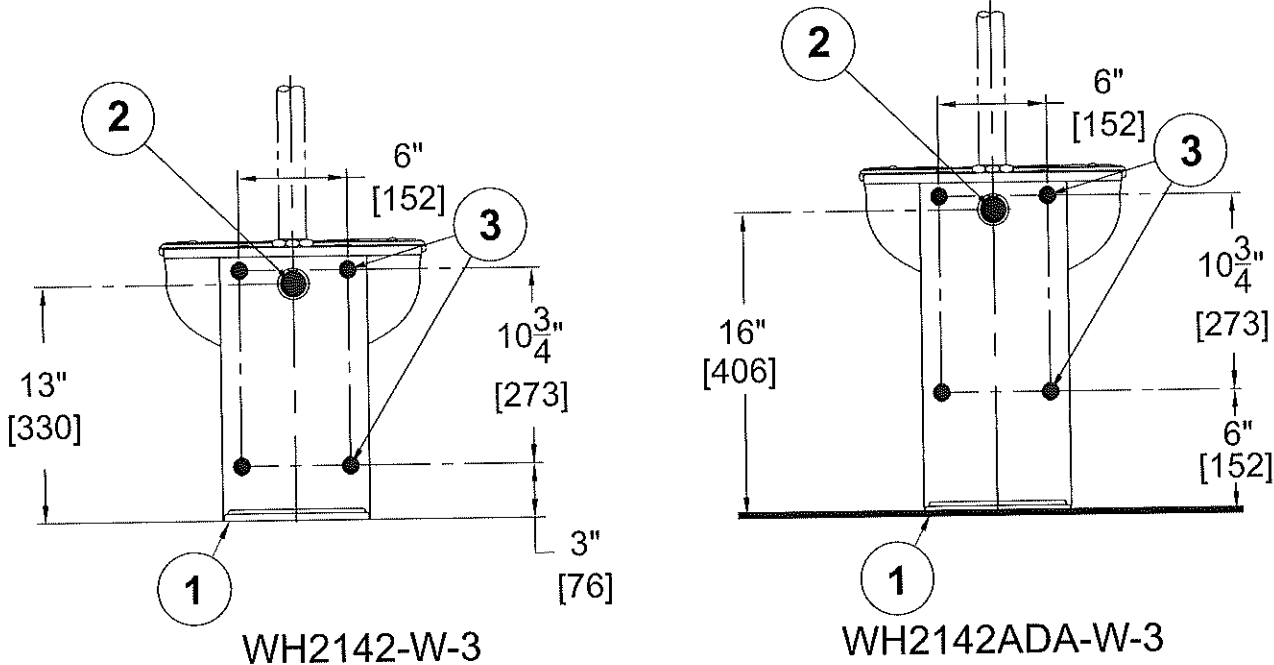


# ROUGH-IN DIMENSIONS

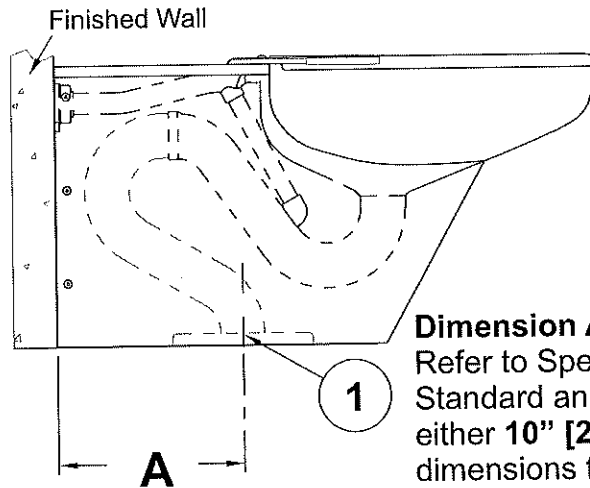
## ! IMPORTANT

Ligature Resistant Toilets require specific Flush Valve model to suit application for Supply Type (Concealed / Exposed), Flow Rate and ADA Accessibility (when applicable). Refer to the following WhiteHall® Accessories:  
 - Concealed Flush Valve Access Panel: Model WH2898 and WHD2898 for ADA  
 - Exposed Flush Valve Cover: WH2802-SLPT and WH2802-SLPT -ADA

### WALL SUPPLY Front View



### Side View



**Dimension A-**  
 Refer to Specified Floor Waste Model:  
 Standard and ADA models are offered  
 either 10" [254], or 12" [305]  
 dimensions from Finished Wall.

- [1] 7-1/2" Recessed Gasket Flange (Flush with bottom of fixture for connection to Closet Flange)
- [2] 1" NPT Female Flush Valve Supply Inlet
- [3] 5/8" Dia. Openings provided for Mounting to required Wall Anchors and/or Wall Backing.



## ROUGH-IN DIMENSIONS

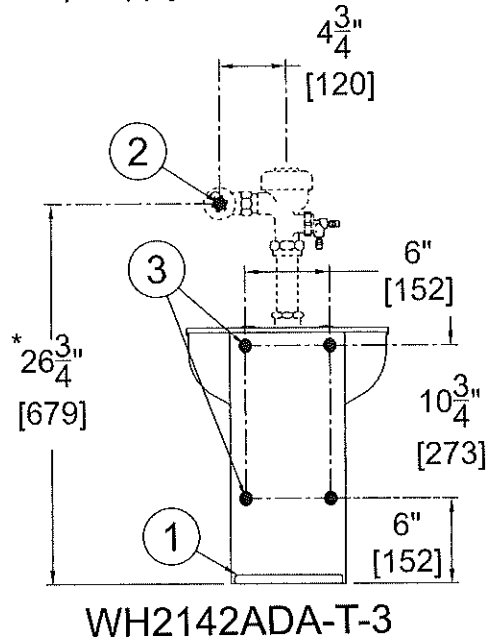
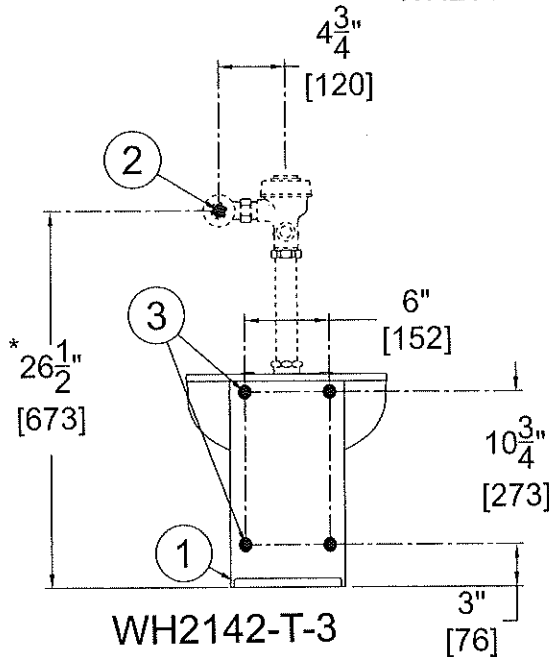
### ! IMPORTANT

Ligature Resistant Toilets require specific Flush Valve model to suit application for Supply Type (Concealed / Exposed), Flow Rate and ADA Accessibility (when applicable). Refer to the following WhiteHall® Accessories:

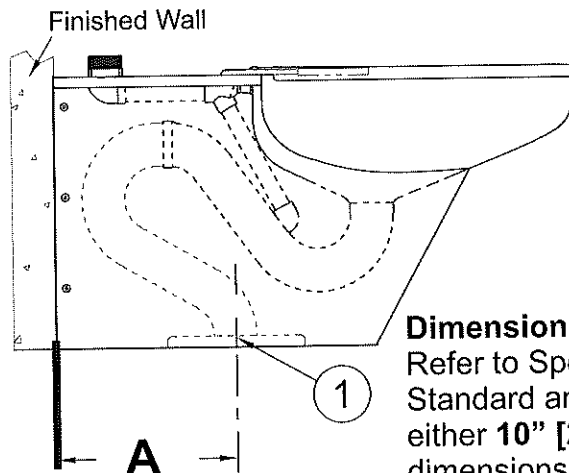
- Concealed Flush Valve Access Panel: Model WH2898 and WHD2898 for ADA
- Exposed Flush Valve Cover: WH2802-SLPT and WH2802-SLPT-ADA

### TOP SUPPLY Front View

\*Flush Valve Supply Inlet dimensions provided are for reference only. Dimensions shown will coordinate with Whitehall Manufacturing optional models WH802-SLPT and WH2802-SLPT-ADA Top Supply Flush Valve covers.



### Side View

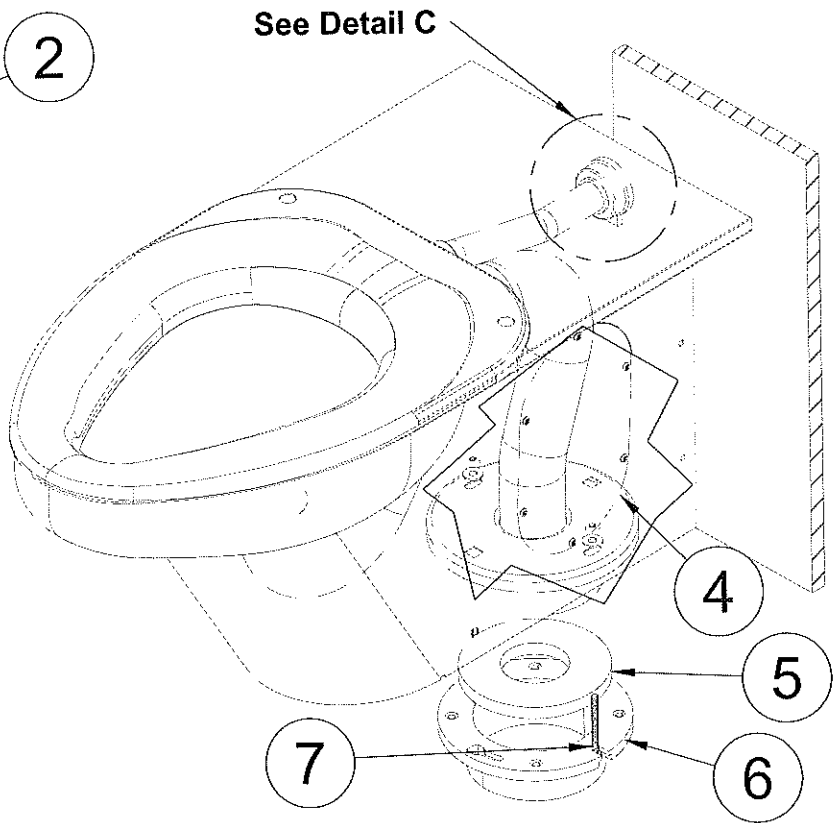
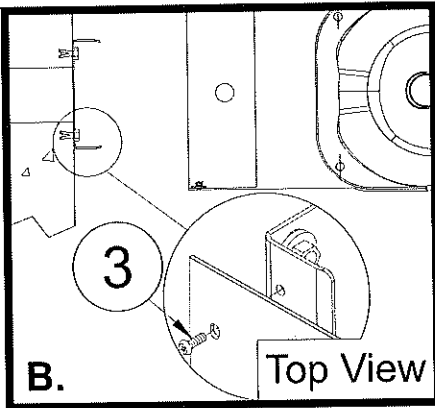
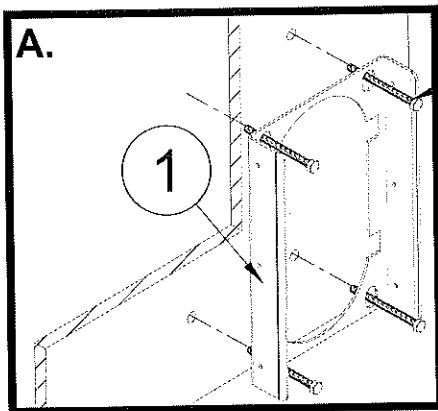


**Dimension A-**  
Refer to Specified Floor Waste Model:  
Standard and ADA models are offered  
either 10" [254], or 12" [305]  
dimensions from Finished Wall.

- [1] 7-1/2" Recessed Gasket Flange (Flush with bottom of fixture for connection to Closet Flange)
- [2] 1" NPT Female Flush Valve Supply Inlet
- [3] 5/8" Dia. Openings provided for Mounting to required Wall Anchors and/or Wall Backing.



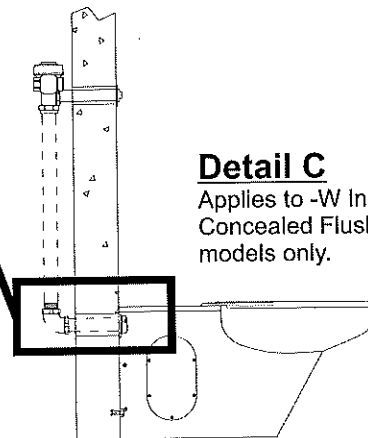
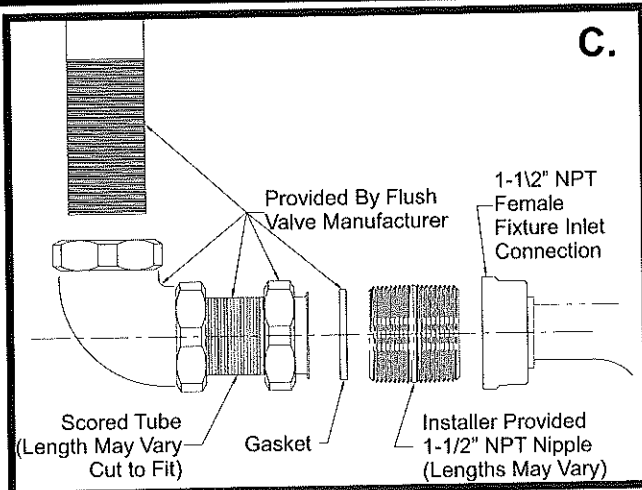
# INSTALLATION DETAILS



## INSTALLATION

- A. Position Mounting Channel [1] onto fixture side of Reinforced Wall locating as indicated. Wall Anchors and Fasteners [2] are by others. **See Detail A.**
- B. Place Toilet up against wall. Attach toilet housing to Mounting Channel [1] using 1/4-20 Screws [3]. **Detail B.**
- C. Remove Access Panel and Fasteners [4] make up toilet waste connection.
- D. Install Flush Valve to fixture as required per manufacture's recommendations.

- [1] Mounting Channel (Provided)
- [2] Wall Mounting Hardware (By Others)
- [3] 1/4-20 Screws
- [4] Access Panel and 1/4"-20 Fasteners
- [5] Appropriate Toilet Gasket (By Others)
- [6] Closet Flange Connection to Waste (By Others)
- [7] Closet Flange Hardware (By Others)



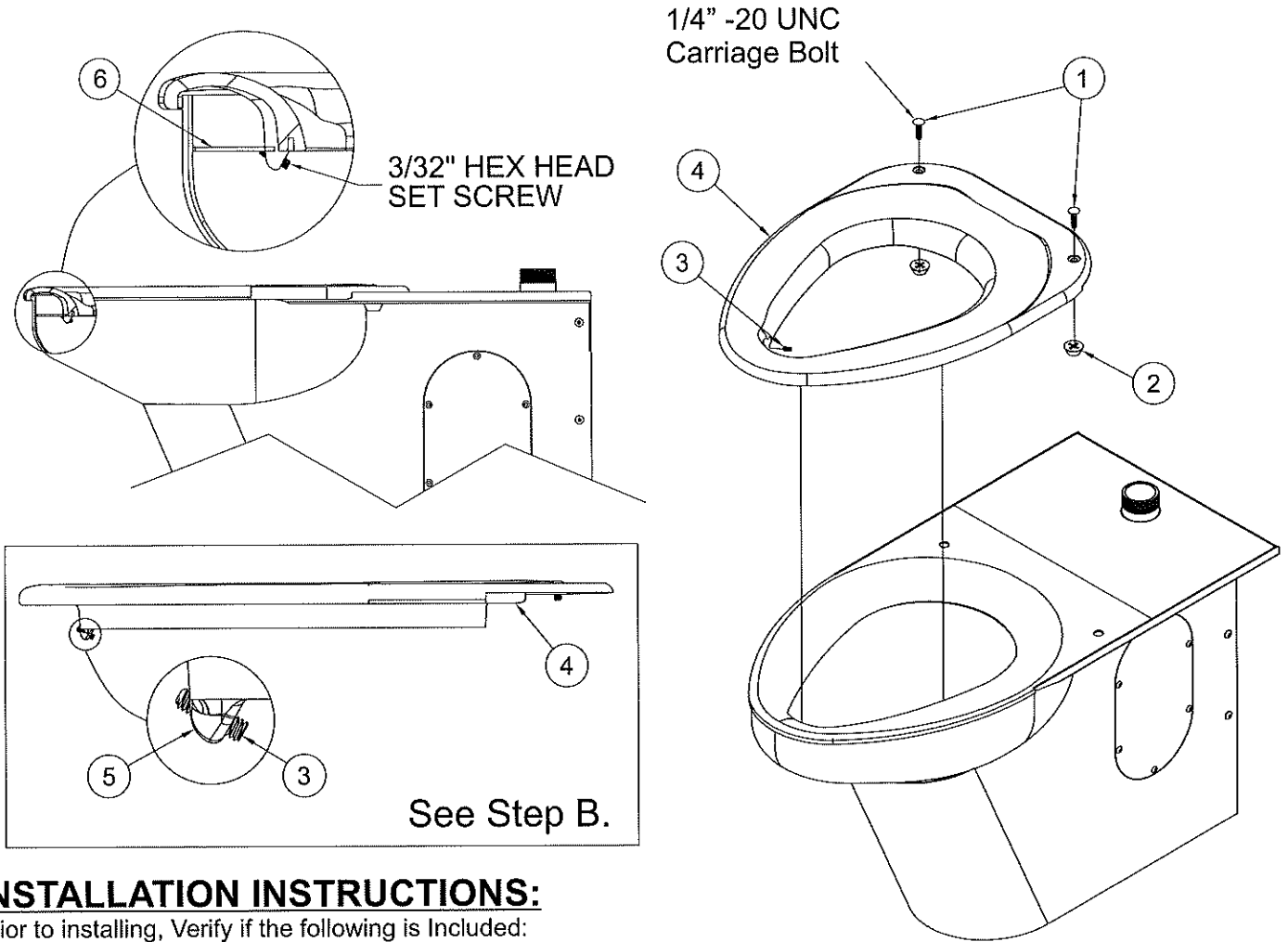
### Detail C

Applies to -W In-Wall Concealed Flush Valve models only.





# PLASTIC SEAT INSTALLATION



### INSTALLATION INSTRUCTIONS:

Prior to installing, Verify if the following is Included:  
Carriage Bolts [1], Tapered Nuts [2], Front Set Screw [3], and Toilet Seat [4].

- A. Partially install Front Set Screw [3] into the Mounting Tab [5] located at the front of the Toilet Seat [4]. Set Screw [3] should not pass beyond Mounting Tab [5].
- B. Position the Toilet Seat [4] onto Toilet, and press down firmly.
- C. Fasten the Toilet Seat [4] to the Toilet by using the Carriage Bolts [1] on top of the Toilet Seat [4] and tighten by installing the Tapered Nuts [2] from the underside of the Toilet rim.
- D. With Toilet Seat [4] Fastened, pressed downward on Toilet Seat [4] and tighten the Front Set Screw [3] until it firmly engages under the Flushing Rim [6].

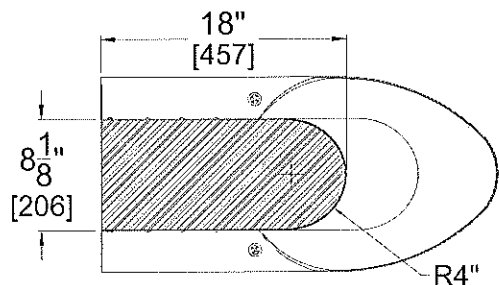
NOTE: If Toilet Seat has Hole Plugs, remove them prior to installing Toilet.

### SLOPING FLOORS:

When required for sloping floors, refer to **detail** to create a level pad for on-floor Toilet Housing.

#### IMPORTANT:

Sloping floor detail is provided for reference only and should not be considered as a recommendation by the fixture manufacturer. Installer assumes all responsibility to alterations of site conditions and affected fixture dimensions.



WC-3 WATER CLOSET



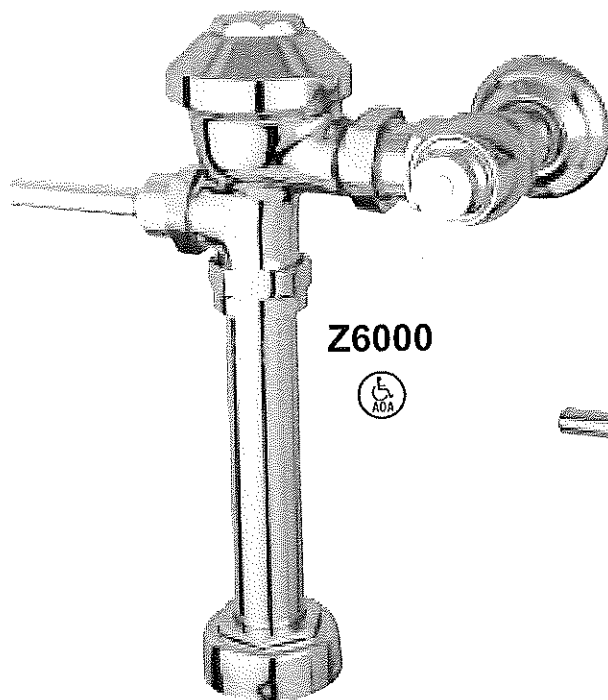
# Aquaflush®

## Z6000 Series

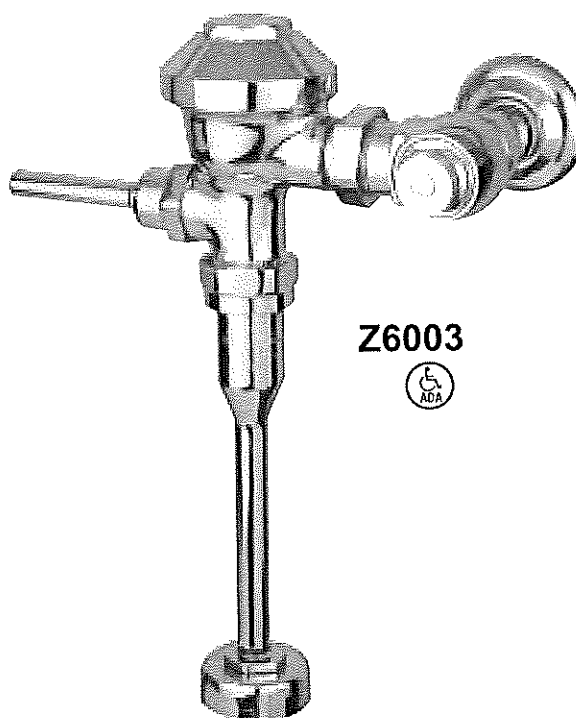
### Aquaflush Exposed Flushometer

## Installation, Operation, Maintenance and Parts Manual

Patented and Patents Pending



Z6000



Z6003



### Aquaflush Exposed Closet/Urinal Systems

Z6000      Z6014

Z6001      Z6017

Z6003      Z6096

Z6010      Z6099

**NOTICE: READ ENTIRE MANUAL PRIOR TO INSTALLING PRODUCT.**

⚠ **WARNING:** Cancer and Reproductive Harm - [www.P65Warnings.ca.gov](http://www.P65Warnings.ca.gov)

⚠ **ADVERTENCIA:** Cáncer y daño reproductivo - [www.P65Warnings.ca.gov](http://www.P65Warnings.ca.gov)

⚠ **AVERTISSEMENT:** Cancer et effets néfastes sur la reproduction - [www.P65Warnings.ca.gov](http://www.P65Warnings.ca.gov)

#### LIMITED WARRANTY

All goods sold hereunder are warranted to be free from defects in material and factory workmanship for a period of three years from the date of purchase. Decorative finishes warranted for one year. We will replace at no costs goods that prove defective provided we are notified in writing of such defect and the goods are returned to us prepaid at Sanford, NC, with evidence that they have been properly maintained and used in accordance with instructions. We shall not be responsible for any labor charges or any loss, injury or damages whatsoever, including incidental or consequential damages. The sole and exclusive remedy shall be limited to the replacement of the defective goods. Before installation and use, the purchaser shall determine the suitability of the product for his intended use and the purchaser assume all risk and liability whatever in connection therewith. Where permitted by law, the implied warranty of merchantability is expressly excluded. If the products sold hereunder are "consumer products," the implied warranty of merchantability is limited to a period of three years and shall be limited solely to the replacement of the defective goods. All weights stated in our catalogs and listed are approximate and are not guaranteed.

**NOTE:** The information in this manual is subject to change at any time without notice. Installations may be performed at different times of construction by different individuals. For this reason, these instructions should be left on-site with the facility or maintenance manager.

# Aquaflush® Rough-In, Product Specification, Models and Options

**ENGINEERING SPECIFICATION: ZURN Aquaflush Exposed Closet Flush Valve** – Exposed, quiet diaphragm-type, chrome-plated flushometer valve with a polished exterior. Complete with a chloramine resistant, dual seal diaphragm with a clog resistant by-pass. The valve is ADA compliant with a non-hold open and no leak handle feature, high back pressure vacuum breaker, one-piece hex coupling nut, adjustable tailpiece, spud coupling, and flange for top spud connection. Control stop has internal siphon-guard protection. Internal seals are made of chloramine resistant materials.

**Z6000PL Aquaflush Plus** is furnished as specified above and includes sweat solder kit, vandal-resistant stop cap, and cast wall flange with setscrew.

## MODELS

Z6000 – 1-1/2" Water Closet Valve with top spud connection.  
 Z6010 – 1-1/2" Water Closet Valve with back spud connection.  
 Z6001 – 1-1/4" Urinal Valve with top spud connection.  
 Z6003 – 3/4" Urinal Valve with top spud connection.

## FLOWS

-FF Full Flow  
 3.0 Gal. for Urinal, 4.5 Gal. for Water Closet

-HET High Efficiency Toilet (PL Only)  
 1.28 Gal. for Water Closet

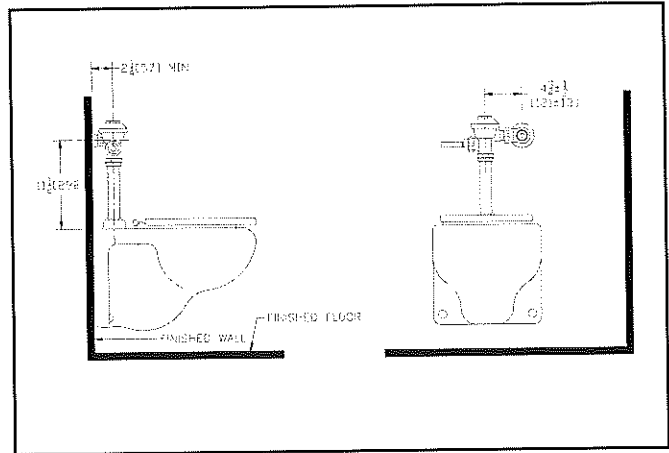
-WS1 Low Consumption  
 1.0 Gal. for Urinal, 1.6 Gal. for Water Closet

-WS 1.5 Gal. for Urinal, 3.5 Gal. for Water Closet

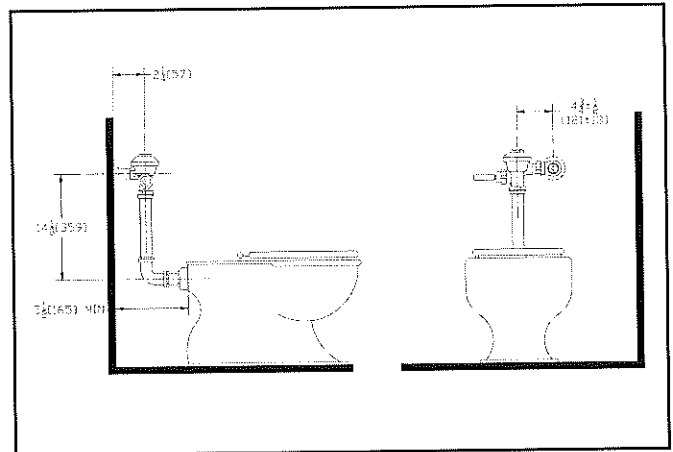
-ULF 0.125 Gal. for Urinal (PL Only)

## OPTIONS

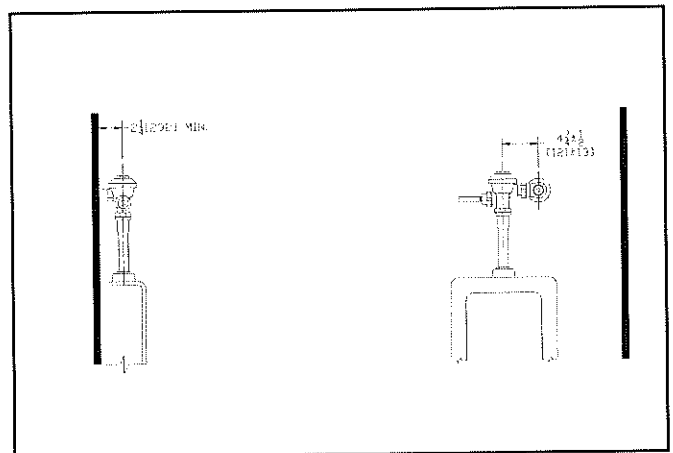
\_\_\_-BG BioCare Handle  
 \_\_\_-H Handle on Front of Flush Valve  
 \_\_\_-L 1" [25] Metal Push Button  
 \_\_\_-L3 3" [76] Metal Push Button  
 \_\_\_-VC Vandal-Resistant Stop Cover  
 \_\_\_-YB Sweat Solder Kit  
 \_\_\_-YC Cast Wall Flange  
 \_\_\_-YJ Split Ring Pipe Support  
 \_\_\_-YK Solid Ring Pipe Support  
 \_\_\_-YO Bumper on Stop Angle



Models: Z6000, Z6000-1, Z6000-2, Z6000-3,  
 -HET (High Efficiency) 1.28 Gal.  
 -WS1 (Water Saver) 1.6 Gal. Low Consumption



Models: Z6010, Z6010-1, Z6010-2,  
 -HET (High Efficiency) 1.28 Gal.  
 -WS1 (Water Saver) 1.6 Gal. Low Consumption



Models: Z6001 (1-1/4" urinal flush valve)  
 Z6003 (3/4" urinal flush valve)  
 -WS1 (Water Saver) 1.0 Gal. Low Consumption  
 -ULF (Ultra Low Flow) 0.125 Gal.

# Sweat Solder Adaptor Installation Instructions

**Important:**

- All plumbing is to be installed according to state and local codes and regulations.
- Water supply lines need to allow proper water flow for each fixture.
- Flush all lines of any **debris** before making connections.
- Do not use pipe sealant or plumbing grease on any fitting other than the control stop inlet.

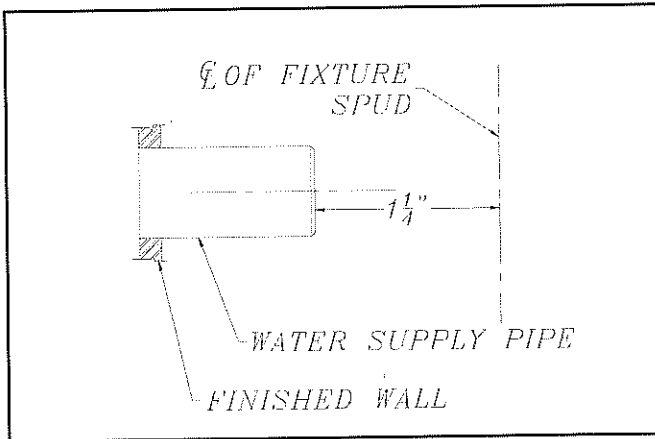
The Aquaflush valve is designed to operate under various water pressures with a recommended range between 10 and 100 psi (69 to 689 kPa). Each Zurn valve is tested for proper performance at the factory before being shipped. Consult the product pages of the catalog for available flow options.

Most low consumption fixtures (1.28 and 1.6 gallon) require a minimum of 25 psi running pressure through the valve to obtain proper evacuation. Please be sure to consult fixture manufacturer on minimum running water supply requirements for proper evacuation.

When installing your quality Zurn valve it is recommended that to protect the polished finish you do not use a toothed wrench. This will cause gouges and scratches on your valve.

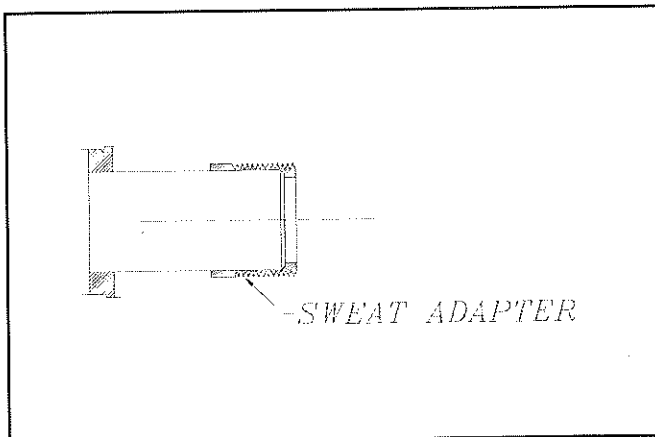
**STEP NO. 1**

Measure distance from finished wall to center line of fixture spud; cut water supply pipe 1-1/4" shorter than this measurement. Chamfer O.D. and I.D.



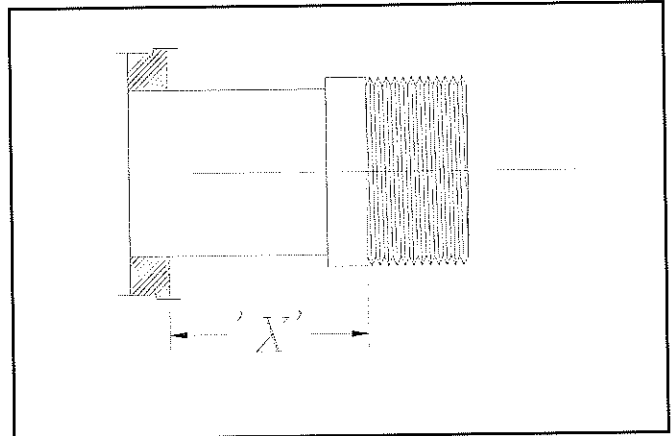
**STEP NO. 2**

Slide threaded adapter onto supply pipe until shoulder stops on end of pipe. Then sweat-solder the adapter to water supply pipe.



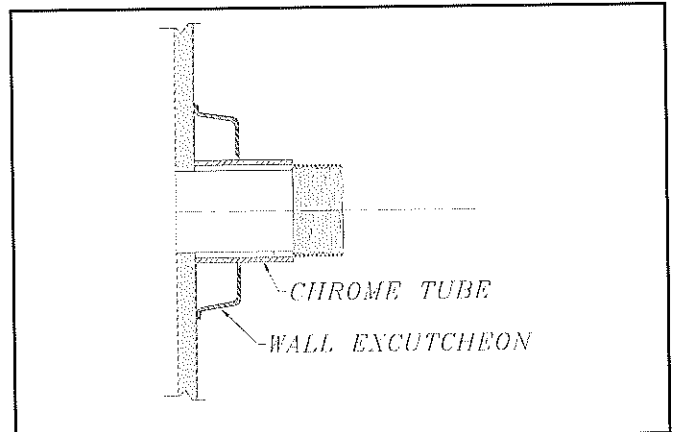
**STEP NO. 3**

Measure from finished wall to first thread of adapter for length of chrome tube. Cut chrome tube this length 'x'.



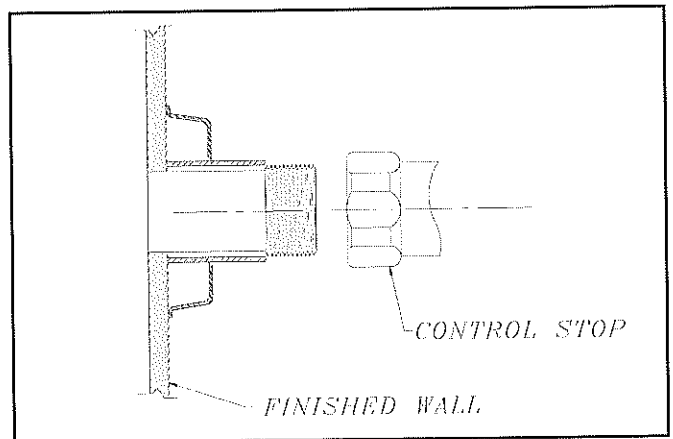
**STEP NO. 4**

Slide wall escutcheon over chrome tube and slide both chrome tube and wall escutcheon over supply pipe pushing the wall escutcheon all the way to the wall.



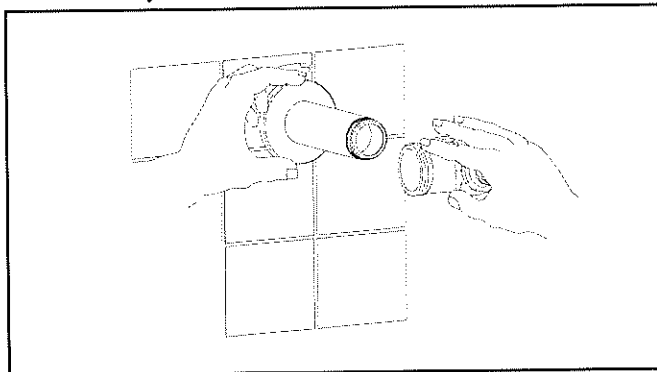
**STEP NO. 5**

Screw control stop onto water supply water adaptor.

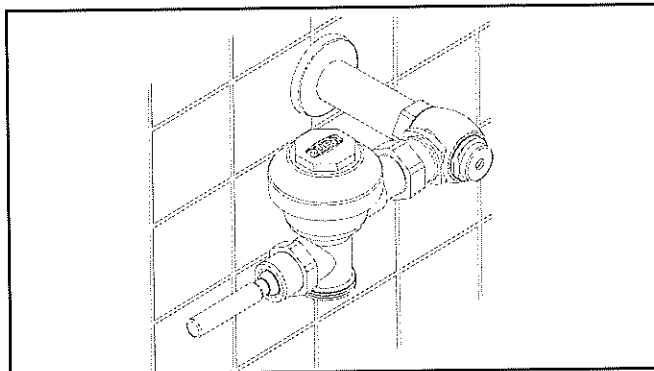


# Aquaflush® Installation Instructions

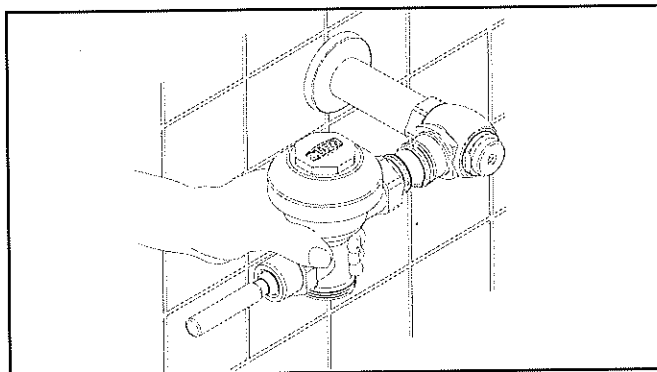
1. Install stop valve assembly using proper size supply escutcheon and sweat solder adapter kit if applicable (see 1). Thread sealing compounds should be used on male NPT threads only.



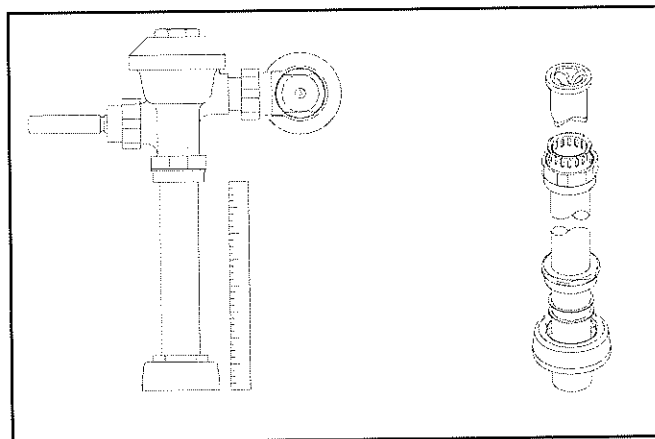
3. Insert the flush valve tailpiece into the stop valve and hand tighten the lock nut to the stop valve. Plumb the entire unit (see 3).



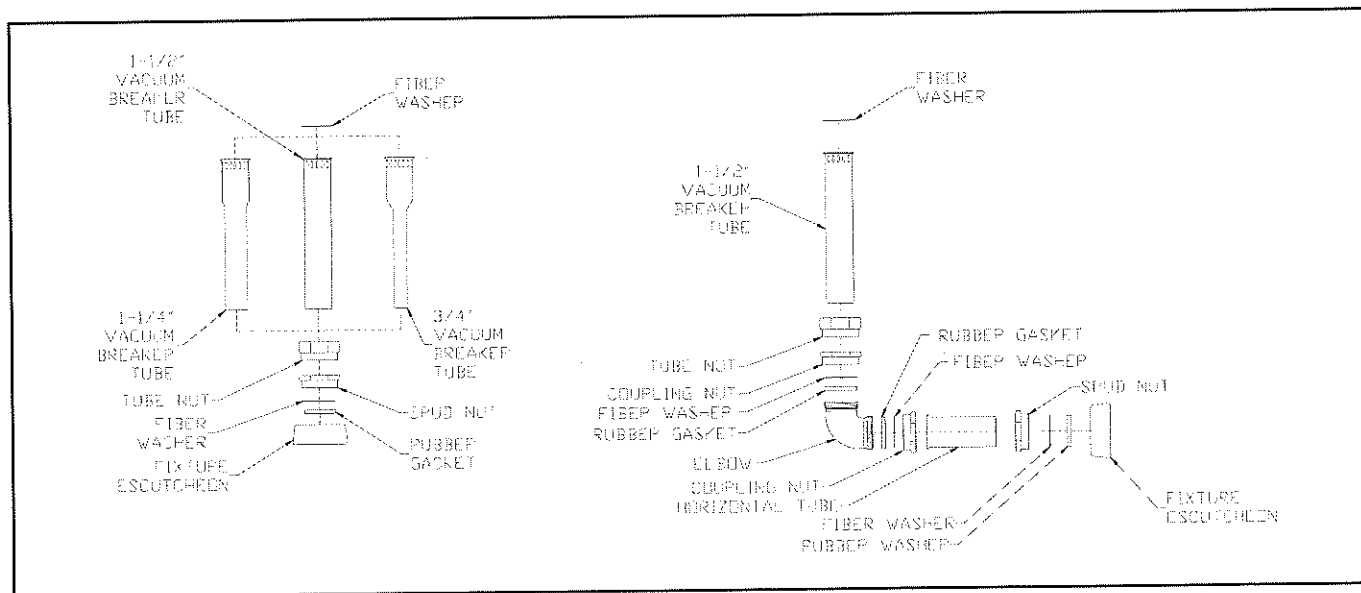
2. Prior to inserting the flush valve tailpiece into stop valve, be certain that the O-ring seal is located in O-ring seal groove at the end of the tailpiece and the locking nut and locking snap ring are located as shown below (see 2). Care should be taken not to damage the O-ring when inserting the tailpiece into the stop valve. If lubrication is needed, wetting the O-ring with water will be sufficient.



4. Determine the length of vacuum breaker tube required to join the flush valve and fixture spud. Cut the vacuum breaker tube, if required, to this length (see 4a). Assemble the vacuum breaker tube assembly and spud nut assembly to the flush valve and fixture spud (see 4b).

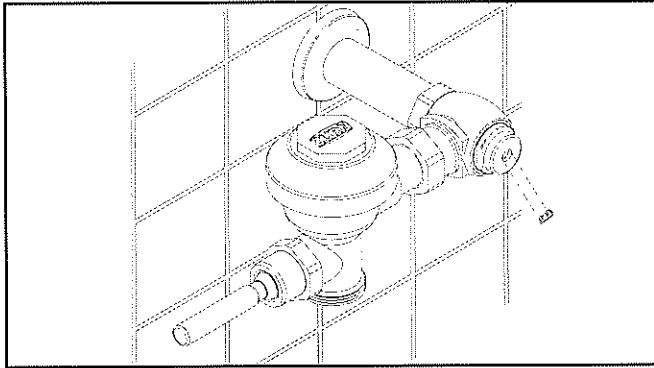


5. Hand tighten spud nut and vacuum breaker tube nut to fixture and flush valve. Adjust the valve assembly for plumb. Tighten fixture spud nut, vacuum breaker tube nut and lock nut with a wrench.



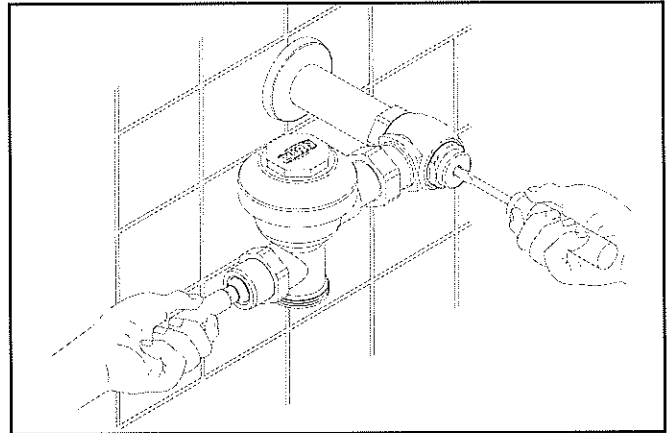
# Aquaflush® Installation Instructions

6. When all flush valves are connected to the fixtures and water pressure is available, it is recommended that the supply piping be flushed to remove dirt, pipe chips, etc. from system. Before the water is turned on, be sure all stop valves to the flush valves are closed off tight. The stop valves can be opened and closed by using the adjusting screw located at the center of the stop valve cap, behind the stop snap cap screw cover if already installed (see 6a). Stop valve adjustments can only be made by using the adjusting screw. **It is not necessary to remove the stop valve cap when making adjustments. If for any reason it becomes necessary to remove the stop valve cap, be certain the water is shut off at the main supply valve.**



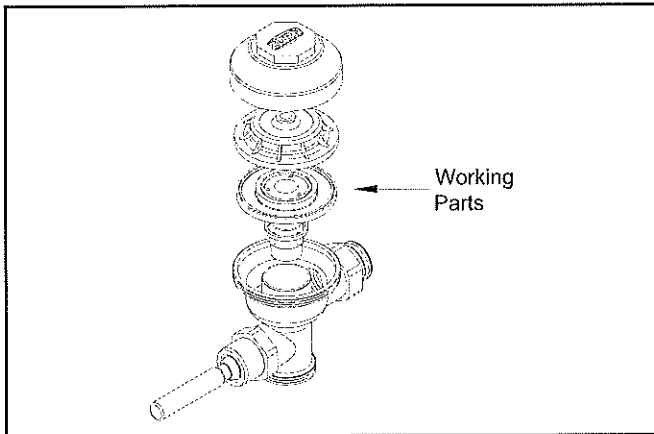
This procedure should also be followed when the system has been drained for some time, as occurs in athletic fields, recreation parks, etc.

7. The Aquaflush flush valves are preset for fixture volume as marked on the valve cartons. The valve does not require regulation for variation in water pressure within its operating range. To set the flush valve for proper operation, gradually adjust the stop valve open, using the adjusting screw, while actuating the valve until the rate of water flow into the fixture is not excessive, yet is sufficient enough to adequately evacuate the waste. The final setting for urinals should be such that the fixture will not overflow when the valve is actuated in succession. The stop snap cap screw cover should be secured after final adjustments have been made.



Use the following procedure to flush out the supply piping:

- A. Remove the main valve body cover.
- B. Remove the working parts from the flush valve (shown in 6b).
- C. Replace the main valve body cover and plastic cover without reinstalling the working parts.
- D. Open the stop valve by using the stop adjusting screw, and flush out all debris from pipe and connections.
- E. Shut stop, open cover, replace the working parts, replace plastic cover and main valve body cover and tighten.

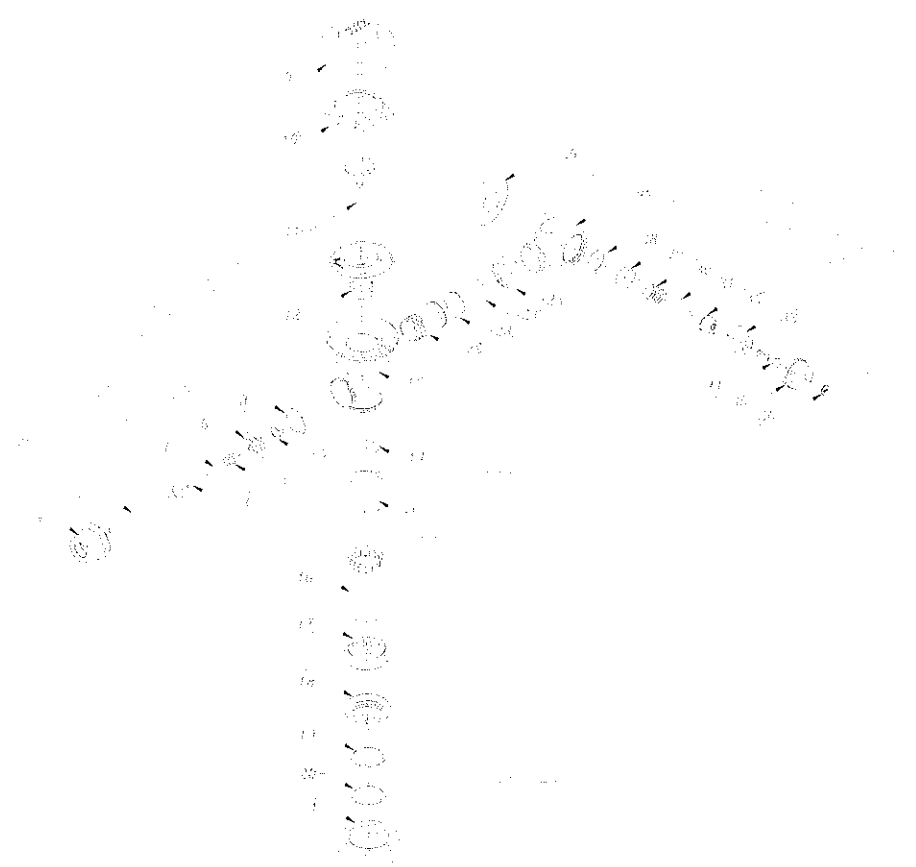




## Aquaflush™ Exposed Repair Kits

### Part Identification

1. Handle Nut
2. Handle
3. Actuator Rod
4. Handle O-Ring
5. Handle Spring
6. Handle Seal Retainer
7. Handle Seal
8. Handle Gasket
9. Valve Body Cover
10. Plastic Wrap
11. Trip Mechanism
12. Diaphragm Assembly
13. Valve Body
14. Vacuum Breaker Insert
15. Vacuum Breaker Duckbill
16. Vacuum Breaker Tube
17. Vacuum Breaker Tube Nut
18. Spud Nut
19. Spud Friction Washer
20. Spud Sleeve
21. Spud Escutcheon
22. Tailpiece
23. Snap Ring
24. Tailpiece O-Ring
25. Locking Nut
26. Wall Flange
27. Stop Body
28. Piston Seal
29. Piston Seal
30. Stop Spring
31. Guide O-Ring
32. Piston Guide
33. Guide Holder
34. Adjusting Screw
35. Stop Cap
36. Snap Cap Screw Cover



Covers and Repair Kits	Product No.
Outside Cover - CP - Item 9	P6000-LL-CP
Inside Cover - Item 10	P6000-L
HET Water Closet Kit - 1.28 gal. flush (PL Only)	P6000-ECA-HET
ULF Urinal Kit - 0.125 gal. flush (PL Only)	P6000-EUA-ULF
Low Consumption Closet Kit - 1.6 gal. flush	P6000-ECR-WS1
Water Saving Closet Kit - 3.5 gal. flush	P6000-ECR-WS
Full Flow Closet Kit - 4.5 gal. flush	P6000-ECR-FF
Low Consumption Urinal Kit - 1.0 gal. flush	P6000-EUR-WS1
Water Saving Urinal Kit - 1.5 gal. flush	P6000-EUR-WS
Full Flow Urinal Kit - 3.0 gal. flush	P6000-EUR-FF

Repair Parts - Inside Parts	Product No.
Urinal Relief Valve - Item 11	P6000-EU13
Closet Relief Valve - Item 11	P6000-EC13

Aquaflush Rebuild Kits	Product No.
Closet and Urinal Rebuild Kits Include Items 3-8, 11, 12, 24, 28-34	P6000-EC-WS-RK P6000-EC-WS1-RK P6000-EU-WS-RK P6000-EU-WS1-RK

Handle Assembly and Repair Kits	Product No.
ADA Handle Assembly (Side) Includes Items 1-8	P6000-M-ADA
Handle Repair Kit (Side) Includes Items 4-8	P6000-MK
Handle Seal Includes Item 8	P6000-M9
Handle Gasket Includes Item 9	P6000-M10
Repair Kit for Front Operation - Exposed Includes Items 4-9	P6000-MHK
Handle Assembly (Front) Includes Items 2-9	P6000-MH

Control Stop Repair Kit and Parts	Product No.
Control Stop Repair Kit for 1" and 3/4"	P6000-D-SD
Includes Items 28-34	
Seal Seat for 1" and 3/4", Includes Item 24	P6000-D42
VP Control Stop Repair Kit for 1" and 3/4"	P6000-D-VP
Sweat Solder Connection with Cast Wall Flange	P6000-YB

Adjustable Tailpieces	Product No.
Adjustable Tailpiece for Standard Flush Valve	P6000-J1
Includes Items 22-25	
Tailpiece Coupling Assembly Includes Items 23-25	P6000-K
Tailpiece Locking Ring Includes Item 23	P6000-C30
Tailpiece O-Ring Includes Item 24	P6000-C31
Coupling Nut Includes Item 25	P6000-C32

Flush Connections and Spud Coupling Kits	Product No.
Flush Tube Assembly for Flush Valves Includes Items 14-17. Specify diameter and length.	P6000-A
Vacuum Breaker Repair Kit Includes Items 14-15	P6000-B-HP
Spud Coupling Assembly Includes Items 18-21. Specify size.	P6000-H-CP



# Aquaflush® Trouble Shooting Guide

Problem	Cause*	Corrective Action*
Valve will not operate.	1.) Stop valve is closed. 2.) Supply valve is closed.	1.) Open stop valve. 2.) Open supply valve.
Insufficient volume of water to adequately siphon fixture.	"1.) Stop valve is not open enough. 2.) Urinal trip mechanism installed in wrong kit, urinal for closet. 3.) Insufficient volume or pressure at supply.	1.) Open stop valve for desired volume of water. 2.) Replace urinal part with proper closet valve part.  3.) If gauges are not available to measure supply pressure or volume of water at the valve, completely remove the working parts and open the stop valve to allow water to pass through the empty valve. If the supply is adequate to siphon the fixture, the guide ring (#16) may be removed from the guide assembly to provide additional flow (see page 5). Should this prove unsatisfactory, steps should be taken to increase the pressure and/or supply.
Flush valve shuts off too quickly.	1.) Damaged or punctured diaphragm. 2.) Enlarged by-pass orifice. "	1.) Install new P6000-EUR or P6000-ECR replacement kit to remedy the problem. (#12 thru #17) 2.) Install new P6000-EUR or P6000-ECR replacement kit to remedy the problem. (#12 thru #17) "
Valve is short flushing.	1.) Diaphragm kit is not matched to the fixture. 2.) Urinal trip mechanism (black #12) is in the closet flush valve.	"1.) Install the proper P6000-EUR or P6000-ECR replacement kit to remedy the problem. (#12 thru #17) 2.) Install closet trip mechanism (white #12).
Valve is flushing too long or not shutting off.	1.) Trip mechanism not seating properly due to foreign material between trip mechanism and retainer disc. 2.) By-pass orifice is plugged or partially plugged.  3.) Line pressure is not adequate to force trip mechanism to seal. 4.) Cracked cover. (#11)	1.) Disassemble parts and rinse thoroughly.  2.) Examine by-pass orifice and clean if necessary being certain not to enlarge orifice opening. 3.) Pressure is inadequate or has dropped below minimum operating range. Steps should be taken to increase the line pressure. 4.) Replace cover with new one.
Water splashes out of fixture.	1.) Supply volume is more than is necessary. 2.) Lime accumulation on vortex or spreader holes of fixture.	1.) Adjust downward on control stop. 2.) Remove the lime build up.
Flush is not considered quiet.	1.) Control stop may not be adjusted for quiet operation. 2.) Fixture may be contributing to noise.  3.) Piping system may be source of noise.	1.) Adjust the control stop for quiet operation keeping in mind the fixture evacuation requirements. 2.) Check noise created by fixture by placing a cover over the bowl opening to separate valve noise from bowl noise. If it is determined the fixture is too noisy consult with fixture manufacturer. 3.) High pressure in the system can sometimes be controlled by the stop valve. Other sources of noise may be the absence of air chambers and shock arrestors, loose pipes, improper size pipes, etc. In these cases the building engineer should be consulted.
Handle assembly leaking.	1.) Handle assembly is not tight.	1.) Tighten handle assembly.

## Care of Chrome Plated Surfaces

The suggested cleaning of chrome plated surfaces is simply to clean them with mild soap and water, then dry. Commercial cleaning compounds are never recommended.

## Seasonal Use

Valves used in installations subject to shut down because of cold and freezing conditions should be maintained in the following manner. After the main supply has been shut off and the water drained from the system, remove the stop valve cap and stop valve internals to allow the water to drain from the flush valve itself.

\*See previous page for numerical references.



**ZURN INDUSTRIES, LLC COMMERCIAL BRASS OPERATION, 5900 ELWIN BUCHANAN DRIVE, SANFORD, NC, U.S.A. 27330**  
**PHONE: 1-800-997-3876 FAX: 919/775-3541 [www.zurn.com](http://www.zurn.com)**  
**ZURN INDUSTRIES LIMITED 3544 NASHUA DRIVE, MISSISSAUGA, ONTARIO L4V 1L2 PHONE: 905/405-8272 FAX: 905/405-1292**

# Transmittal

PROJECT: New Dormitories - Phase 2, Bldg. 6  
Booneville Human Development Center  
Booneville, Arkansas

SMA PROJECT NO: 2002B

DATE: February 2, 2023

TO: Alessi Keyes Construction  
10623 Maumelle Blvd.  
North Little Rock, AR 72113

If enclosures are not as noted, please  
inform us immediately.

If checked below, please:

ATTN: Charley Dawson

Acknowledge receipt of enclosures.

Return enclosures to us.

**WE TRANSMIT:**

Herewith  Under separate cover

**VIA:**

Courier  Mail  E-mail  
 Overnight delivery  Fax  Other

**FOR YOUR:**

Approval/Action  Information  Use as requested  
 Review & comment  Use  Other

**THE FOLLOWING:**

Drawings  Specifications  Digital Files - PDF  
 Submittals  Proposal Request  Digital Files - Other  
 Change Order  Samples  Other

COPIES	DATE	REV. NO.	DESCRIPTION	ACTION CODE
1	2/2/2023		Commercial Water Closets resubmittal	A

ACTION CODE A. No action required B. Action indicated on item transmitted C. For signature and return to this office D. For signature and forwarding as noted below under REMARKS E. See REMARKS below

REMARKS

COPIES TO:	(with enclosures)	
Rex Morris, Morris AE	<input checked="" type="checkbox"/>	By: Trey Tassin
	<input type="checkbox"/>	
	<input type="checkbox"/>	

# Submittal Comment Sheet

**To:** Randy Stocks, Stocks-Mann Architects  
**From:** Rob Adams, BTME  
**Date:** February 2, 2023  
**Project:** Booneville HDC New Dorm (Bldg #6)  
**Project #:** 01-20-0003  
**Ref:** 22 42 13.13-01 Commercial Water Closets Resubmittal #1  
**Submitted By:** Alessi Keyes Construction

APPROVED	<input type="checkbox"/>
REJECTED	<input type="checkbox"/>
REVISE AND RESUBMIT	<input type="checkbox"/>
REFER TO SUBMITTAL COMMENT SHEET	<input checked="" type="checkbox"/>

This review performed by Bernhard TME, LLC, is only for general conformance with the design concept of the project and general compliance with the information provided in the Contract Documents. Corrections or comments made on the submittal and/or shop drawings during this review do not relieve the Contractor from compliance with the requirements of the plans, specifications, and other contract documents. Approval of a specific item shall not indicate an approval of an assembly of which the item is a component. Contractor is responsible for the following: all quantities; configuration of components; dimensions to be confirmed and correlated at the jobsite; information that pertains solely to the fabrication process or to the means, methods, techniques, sequences, and procedures of construction; coordination of the work with that of all other trades; and, for performing all work in a safe and satisfactory manner.

**Bernhard TME**

DATE: 02/02/23 BY: R. Adams

Below find our response for the submittal received on Wednesday February 1, 2023.

1. WC-3

**APPROVED**

**- End of Submittal Comments -**

THIS REVIEW PERFORMED BY BERNHARD TME, LLC, IS ONLY FOR GENERAL CONFORMANCE WITH THE DESIGN CONCEPT OF THE PROJECT AND GENERAL COMPLIANCE WITH THE INFORMATION PROVIDED IN THE CONTRACT DOCUMENTS. CORRECTIONS OR COMMENTS MADE ON THE SUBMITTAL AND/OR SHOP DRAWINGS DURING THIS REVIEW DO NOT RELIEVE THE CONTRACTOR FROM COMPLIANCE WITH THE REQUIREMENTS OF THE PLANS, SPECIFICATIONS, AND OTHER CONTRACT DOCUMENTS. APPROVAL OF A SPECIFIC ITEM SHALL NOT INDICATE AN APPROVAL OF AN ASSEMBLY OF WHICH THE ITEM IS A COMPONENT. CONTRACTOR IS RESPONSIBLE FOR THE FOLLOWING: ALL QUANTITIES; CONFIGURATION OF COMPONENTS; DIMENSIONS TO BE CONFIRMED AND CORRELATED AT THE JOBSITE; INFORMATION THAT PERTAINS SOLELY TO THE FABRICATION PROCESS OR TO THE MEANS, METHODS, TECHNIQUES, SEQUENCES, AND PROCEDURES OF CONSTRUCTION; COORDINATION OF THE WORK WITH THAT OF ALL OTHER TRADES; AND, FOR PERFORMING ALL WORK IN A SAFE AND SATISFACTORY MANNER.

WC-3 WATER CLOSET  
AM. STANDARD 3043.001 CLOSET BOWL  
ZURN Z6000-WS1-YBYC FLUSH VALVE  
CENTOCO 500STSCCSS CLOSET SEAT



# Madera™ FloWise® 16-1/2" Height Elongated Flushometer Toilet

VITREOUS CHINA LESS EVERCLEAN®

BARRIER FREE

## Madera™ FloWise® 16-1/2" Height Elongated LESS EverClean®

- Floor mount flushometer valve toilet
- Vitreous china
- High Efficiency, Low Consumption. Operates in the range of 1.1 gpf to 1.6 gpf (4.2 Lpf to 6.0 Lpf)
- Meets definition of HET (High Efficiency Toilet) when used with a high efficiency flush valve (1.1, 1.28 gpf or 1.6 / 1.1 gpf dual flush)
- Fully glazed 2-1/8" trapway
- Elongated bowl
- 10" or 12" roughing-in
- 16-1/2" rim height for accessible application
- Condensation channel
- Powerful direct-fed siphon jet action
- 10" x 12" water surface area
- 1-1/2" inlet spud
- 2 bolt caps included
- Tested to support static weight load of 2,500 lbs. (1,134 kg)



SEE REVERSE FOR ROUGHING-IN DIMENSIONS

- ➔ **3043.001** Elongated bowl only, top spud
- 3248.001** Elongated bowl only, top spud with slotted rim for bedpan holding
- 3249.001** Elongated bowl only, back spud

### Component Parts:

- 047007-0070A** Inlet Spud (furnished with bowl)
- 034783-0200A** Bolt caps with retainers (furnished with bowl)

### Nominal Dimensions:

718 x 356 x 419mm  
(28-1/4" x 14" x 16-1/2")

Fixture only, less seat and flush valve

### Compliance Certifications -

#### Meets or Exceeds the Following Specifications:

- ASME A112.19.2 / CSA B45.1 for Vitreous China Fixtures

### System MaP\* Score:

- 1,000 grams of miso @ 1.1 gpf, 1.28 gpf or 1.6 gpf when used with an American Standard flush valve

\* Maximum Performance (MaP) testing performed by IAPMO R&T Lab. MaP Report conducted by Veritec Consulting, Inc. and Koeller and Company.

### OPERATING PRESSURE:

25 psi (flowing) - 80 psi (static)

### FLOW REQUIREMENT:

25 gpm (94.6 L/min.)

### To Be Specified:

- Color:  White
- Seat:
  - American Standard #5901.100 Heavy duty open front less cover
  - American Standard #5901.100SS Extra heavy duty open front less cover with EverClean®
- Flushometer Valve:

MEETS THE AMERICANS WITH DISABILITIES ACT GUIDELINES AND ANSI A117.1 REQUIREMENTS FOR ACCESSIBLE AND USABLE BUILDING FACILITIES - CHECK LOCAL CODES.



ENVIRONMENTAL PRODUCT DECLARATION



When used with 1.1 or 1.28 gpf toilet flush valves

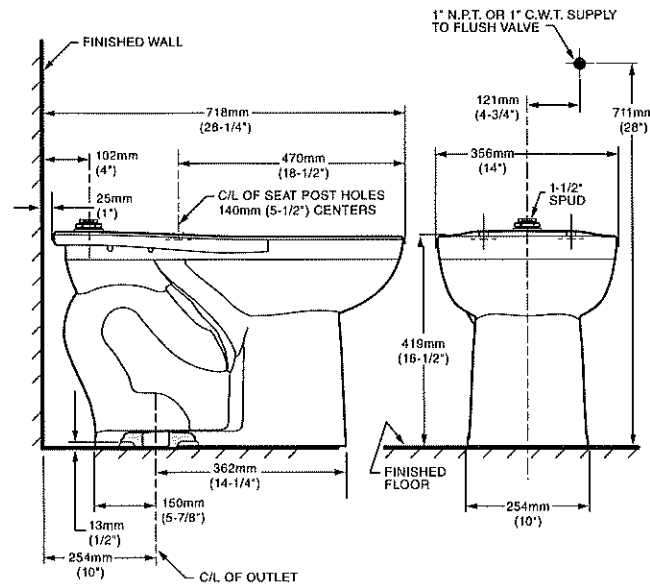


EVERCLEAN

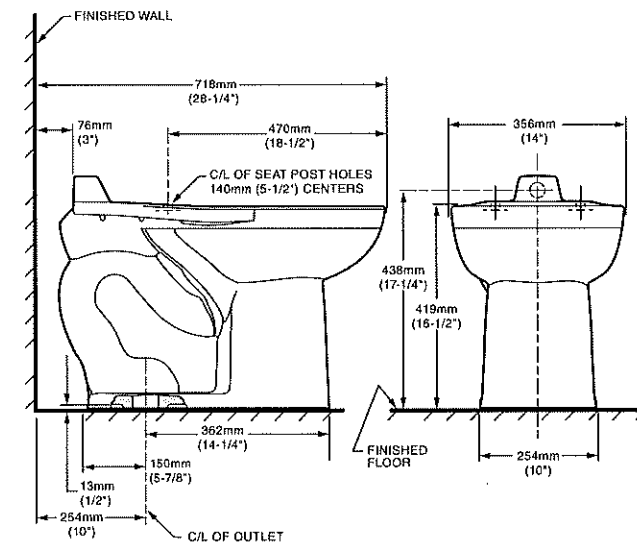


WATER EFFICIENT

3043.001/3248.001



3249.001



**NOTES:**  
 PRODUCT 3043 SHOWN, 3248 SAME EXCEPT WITH SLOTTED RIM FOR BED PAN HOLDING.  
 TO COMPLY WITH AREA CODE GOVERNING THE HEIGHT OF VACUUM BREAKER ON THE FLUSHOMETER VALVE, THE PLUMBER MUST VERIFY DIMENSIONS SHOWN FOR SUPPLY ROUGHING.  
 THIS TOILET DESIGNED TO ROUGH-IN AT A MINIMUM DIMENSION OF 254MM (10") AND A MAXIMUM DIMENSION OF 305MM (12") FROM FINISHED WALL TO C/L OF OUTLET.  
 FLUSHOMETER VALVE NOT INCLUDED WITH FIXTURE AND MUST BE ORDERED SEPARATELY. FLUSHOMETER VALVE REQUIREMENTS FOR 12" (305MM) ROUGH-IN: SWEAT EXTENSION NIPPLE IS REQUIRED. REFER TO VALVE MANUFACTURER AND LOCAL CODES.

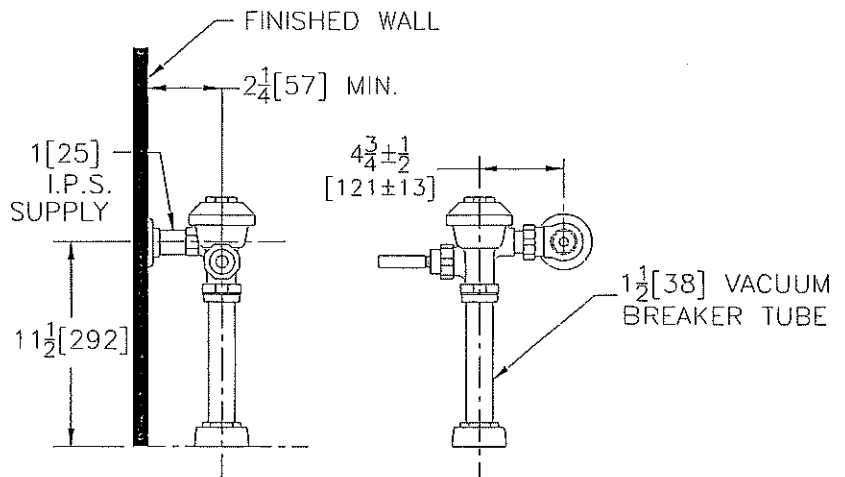
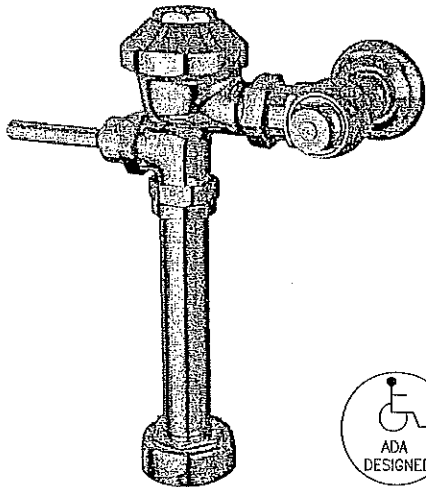
**IMPORTANT:** Dimensions of fixtures are nominal and may vary within the range of tolerances established by ANSI Standard A112.19.2. These measurements are subject to change or cancellation. No responsibility is assumed for use of superseded or voided pages.



Aquaflush®

TAG \_\_\_\_\_

# Z6000 Model for Water Closets



### Flow Options

- HET 1.28 gpf High Efficiency Flush
- WS1 1.6 gpf Low Consumption Flush
- 3.5 gpf
- FF 4.5 gpf Full Flush

### Suffix Options (Check/Specify Appropriate Options)

- BG BioCare™ ADA Handle
- DF Dual Flush 1.6/1.1 gpf
- H Handle on Front of Flush Valve
- HL 1" [25] Metal Push Button
- HL3 3" [76] Metal Push Button
- VC Vandal Resistant Stop Cover
- YB Sweat Solder Kit
- YC Cast Wall Flange
- YJ Split Ring Pipe Support
- YK Solid Ring Pipe Support
- Other

**ENGINEERING SPECIFICATION: ZURN Z6000 Aquaflush Exposed Closet Flush Valve** - Exposed, quiet diaphragm-type, chrome plated flushometer valve with a polished exterior. Complete with a chloramine resistant, dual seal diaphragm with a clog resistant by-pass. The valve is ADA compliant with a non-hold-open and no leak handle feature, high back pressure vacuum breaker, one piece hex coupling nut, adjustable tailpiece, spud coupling and flange for top spud connection. Control stop has internal siphon-guard protection. Internal seals are made of chloramine resistant materials.

-Z6000PL - Aquaflush Plus is furnished as specified above and includes sweat solder kit, vandal resistant stop cap, and cast wall flange with set screw. **Complete with a chloramine resistant, dual seal diaphragm with a clog resistant by-pass.**

Architectural/Engineering Approval

ZURN INDUSTRIES, LLC. ♦ COMMERCIAL BRASS OPERATION ♦ 5900 ELWIN BUCHANAN DRIVE ♦ SANFORD NC 27330

PHONE: 1-800-997-3876 ♦ FAX: 919-775-3541 ♦ WORLD WIDE WEB: WWW.ZURN.COM

IN CANADA: ZURN INDUSTRIES LIMITED ♦ 3544 NASHUA DRIVE ♦ MISSISSAUGA, ONTARIO L4V1L2 ♦ PHONE: 905-405-8272 FAX: 905-405-1292





COMMERCIAL HEAVY DUTY



Product Specifications

<b>Shape</b>	Elongated
<b>Seat Material</b>	Polypropylene
<b>Seat Form</b>	Open front
<b>Commercial Hinge</b>	Yes
<b>Bolt Material</b>	Stainless steel
<b>Hardware Material</b>	Stainless Steel
<b>Check Hinge</b>	Yes
<b>Cover</b>	No
<b>Custom Gasket</b>	Yes
<b>Color</b>	White

**Warranty** 1 year limited warranty



Available Colors

White, black, bone, biscuit,

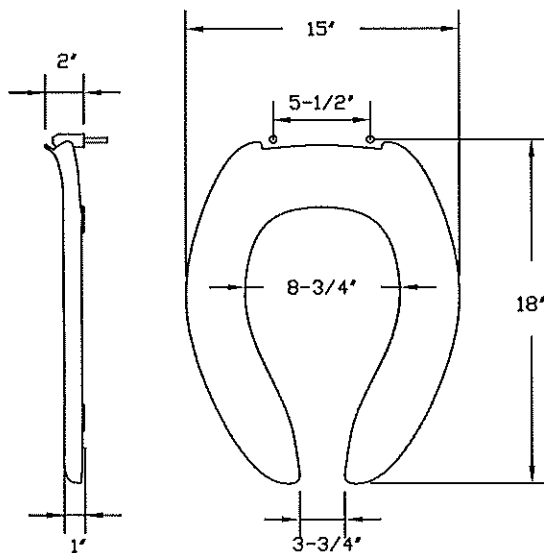
Features

**Self Sustaining**

Self Sustaining hinge holds commercial seats in place and avoids slamming.

**Commercial Hinge**

Includes commercial grade hinges. One piece solid metal hinge pin and bolt over molded with plastic.



Dimensions shown are nominal and may vary within a range of tolerance. Product specifications are subject to change without notice.