



Hight Jackson
ASSOCIATES
5201 W Village Parkway, Suite 300 | Rogers, Arkansas 72758 | (479) 464-4965 | www.hjarch.com

A NEW FACILITY FOR
Thaden Competition Gym
911 S MAIN ST, Bentonville, AR 72712

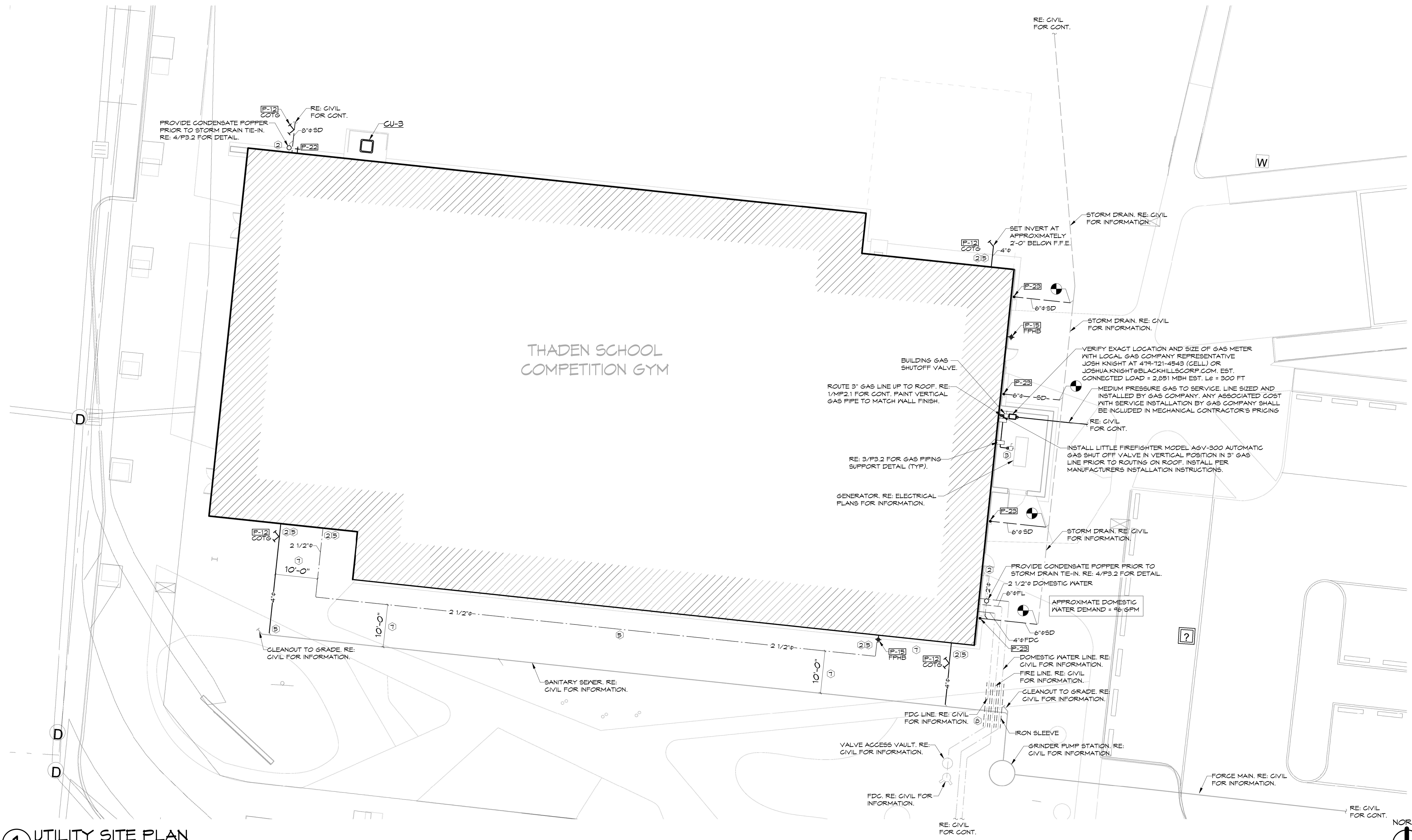
DRAWN BY:
KPH
CHECK BY:
NEW
ISSUE DATE:
1/22/2025

PROJECT NO:
2335.3
REVISION DATES:
01/24/2025

UTILITY SITE PLAN
SHEET
U2.1

COPYRIGHT 2025
THESE DRAWINGS AND SPECIFICATIONS ARE
THE EXCLUSIVE PROPERTY OF
HIGHT JACKSON ASSOCIATES P.A.
USE OR REPRODUCTION IS PROHIBITED
WITHOUT WRITTEN CONSENT

HSA JOB # 24-139



1 UTILITY SITE PLAN
3/32" = 1'-0"

NOTES:
REFER TO SHEET U2.1 FOR UTILITY SITE PLAN.
REFER TO SHEET P1.1 FOR PLUMBING NOTES & LEGEND.
REFER TO SHEETS P2.1 & P2.1 FOR PLUMBING PLANS.
REFER TO SHEETS P3.1 & P3.2 FOR PLUMBING DETAILS.
REFER TO SHEETS P4.1 THRU P4.3 FOR PLUMBING RISERS.
REFER TO SHEET P5.1 FOR PLUMBING SCHEDULES.
REFER TO SHEET MP2.1 FOR MECHANICAL ROOF PLAN.

HSA **HSAEngineering**
479 / 452 / 8922 office
7405 Ellis St.
Fort Smith, AR 72916
HSAConsultants.com

GENERAL PLUMBING NOTES

- ALL PLUMBING MATERIALS AND INSTALLATION SHALL COMPLY WITH THE ARKANSAS STATE PLUMBING CODE, LATEST EDITION.
- INSTALL ALL DOMESTIC HOT AND COLD WATER PIPING AS PER STATE AND LOCAL CODES.
- INSULATE ABOVE GRADE CONCEALED DOMESTIC HOT AND COLD WATER LINES PER SPECIFICATIONS, SECTION 22 07 19.
- PROVIDE MAIN DOMESTIC COLD WATER LINE BUILDING SHUT OFF VALVE AT ENTRY INTO THE BUILDING. INSTALL IN FREEZE PROOF VAULT WITH ACCESS COVER.
- INSTALL DEEP SEAL TRAPS AT ALL DRAIN CONNECTIONS.
- COORDINATE UNDERSLAB PIPING WITH COLUMNS AND FOOTINGS. REFER TO STRUCTURAL DRAWINGS.
- MINIMUM DEPTH OF COVER FOR WATER LINES IS 30 IN.
- BURY YELLOW #10 THIN COPPER TRACER WIRE IN TRENCH WITH ALL UNDER GROUND PLASTIC SERVICES. LEAVE ENDS EXPOSED FOR FUTURE LOCATION.
- PROVIDE AND INSTALL 6 IN. DIRT LEG AND GAS STOP (BALL VALVE ONLY) AT WEATHERMENT GAS CONNECTIONS.
- PROVIDE GAS MAIN BUILDING SHUT OFF VALVE NEAR ENTRY TO THE BUILDING.
- ALL GAS PIPING SYSTEMS WITHIN A BUILDING AND OTHER ABOVE GROUND GAS PIPING SHALL BE ELECTRICALLY CONTINUOUS AND BONDED TO A GROUNDED ELECTRODE AS DEFINED IN N.F.P.A. TO.
- VERIFY LOCATION AND SIZE OF EXISTING SITE UTILITIES WITH UTILITY AUTHORITIES PRIOR TO CONSTRUCTION.
- ALL IMPROVEMENTS (PAVEMENTS, CURB AND GUTTER, SOD, ETC.) SHALL BE REPLACED BY GENERAL CONTRACTOR TO PRECONSTRUCTION CONDITION.
- WHERE FIRE RATED PARTITIONS OR FLOORS OCCUR, ALL FLOOR TO FLOOR AND ROOM TO ROOM PENETRATIONS SHALL BE PROPERLY FIRE SEALED WITH U.L. LISTED AND CLASSIFIED FIRE CAULK OR FIRE SEALED BY USING AN APPROVED FIRE SEAL SLEEVE METHOD WHICH MEETS U.L. REQUIREMENTS. ALL OTHER PENETRATIONS OF RATED CHASES OR WALLS SHALL BE PROPERLY FIRE SEALED AND WHERE EXTENDING THROUGH SUCH RATED SURFACE SHALL BE A RATED FIRE STOP PENETRATION. ALL FIRE STOPPING, FIRE CAULKING AND FIRE SLEEVING OR OTHER FIRE SEALING SHALL BE ACCEPTABLE BY THE LOCAL AUTHORITIES AND SHALL BEAR THE U.L. SEAL.
- INSTALL DOMESTIC WATER AND GAS LINES TIGHT AGAINST BUILDING ROOF STRUCTURE.
- VERIFY LOCATION, INVERT AND SIZE OF ALL EXISTING UTILITIES PRIOR TO BEGINNING CONSTRUCTION.
- PROVIDE CITY APPROVED REDUCED PRESSURE BACKFLOW PREVENTERS ON ALL DOMESTIC SERVICE LINES CONNECTED TO ALL DEVICES, APPLIANCES, APPLIANCES AND APPARATUS INTENDED TO SERVE SOME SPECIAL FUNCTION, SUCH AS STERILIZATION, DISTILLATION, PROCESSING, COOLING, FREEZING, ICE, WATER PUMPS, FILTERS, SOFTENERS, TANKS AND ALL OTHER APPLIANCES AND DEVICES THAT HANDLE OR TREAT POTABLE WATER SHALL BE PROTECTED AGAINST CONTAMINATION WITH SIMILAR BACKFLOW PREVENTER.
- CONDENSATE PIPING FROM ROOF TOP AIR CONDITIONERS SHALL BE SCHEDULE 40 P.V.G. PROVIDE CONDENSATE TRAP. ROUTE CONDENSATE LINE TO NEAREST ROOF DRAIN OR GUTTER.
- PROVIDE WEATHERPROOF PIPE BEAD WITH TPO MEMBRANE AS FLASHING AND STAINLESS STEEL CLAMPING RING FOR ALL GAS LINES PENETRATING THE ROOF.
- ALL MECHANICAL INSTALLATIONS SHALL CONFORM TO THE LATEST ACCEPTABLE ARKANSAS STATE MECHANICAL CODE.
- ALL WATER AND SEWER LINE MATERIALS AND INSTALLATION METHODS SHALL BE IN ACCORDANCE WITH THE CITY OF BENTONVILLE STANDARD SPECIFICATIONS FOR PUBLIC WORK CONSTRUCTION AS WELL AS THE ARKANSAS STATE PLUMBING CODE.
- HORIZONTAL BRANCHES SHALL CONNECT TO HORIZONTAL STACK OFFSETS AND TO THE BASES OF STACKS AT A POINT LOCATED NOT LESS THAN 10 PIPE DIAMETERS DOWNSTREAM FROM THE STACK.
- CONTRACTOR SHALL PROVIDE "AS BUILT" DRAWINGS OF ALL PLUMBING AND PIPING SYSTEMS UPON COMPLETION OF THE PROJECT.
- THE CONTRACTOR SHALL FAMILIARIZE HIMSELF WITH THE DRAWINGS, THE BUILDING SITE, AND OTHER INFORMATION PRESENTED FOR THE CONSTRUCTION OF THIS PROJECT. IF CONTRACTOR HAS QUESTIONS REGARDING ASSEMBLIES OR LAYOUTS WITH THE PROJECT HE SHALL MAKE THEM KNOWN TO THE ENGINEER IN WRITING PRIOR TO BIDDING THE PROJECT. CLAIMS MADE SUBSEQUENT TO THE BID WILL NOT BE ACCEPTED IF IT IS DETERMINED THAT PROPER FAMILIARIZATION COULD HAVE AVOIDED SUCH CLAIM.
- MECHANICAL CONTRACTOR SHALL COORDINATE INSTALLATION PLUMBING SITE UTILITIES WITH SITE WORK OF OTHER TRADES. IN INSTANCES WHERE COORDINATION REQUIRES DEVIATION FROM PLANS MECHANICAL CONTRACTOR SHALL NOTIFY ENGINEER OF PROPOSED CHANGES.
- COMPLY WITH STATE OF ARKANSAS ADOPTED ADA ACCESSIBLE GUIDELINES IN REGARD TO ACCESSIBLE FEATURES.
- PROVIDE DRIP PAN FOR ENTIRE LENGTH OF PIPE WHERE PIPE MUST BE INSTALLED ABOVE ELECTRICAL EQUIPMENT.
- DO NOT ROUTE GROUPS OF CONDUIT, PIPES, AND SLEEVES ABOVE FOOTINGS UNLESS NOTED TO DO SO. IF CONFLICT OCCURS, CONSULT ARCHITECT/ENGINEER.
- LIMIT WIDTH OF CONDUIT, PIPES AND SLEEVES NOT TO EXCEED 3 FEET IN WIDTH AS IT PASSES UNDER WALL FOOTING. AS MUCH AS POSSIBLE, ALIGN THE ITEMS PERPENDICULAR TO THE FOOTING AS IT PASSES BELOW FOOTING.
- PROVIDE A MINIMUM SPACING OF 2 FEET BETWEEN CONDUIT OR PIPE GROUPS AS ITEMS PASS UNDER FOOTINGS.
- DO NOT ROUTE CONDUITS, PIPE OR SLEEVES UNDER COLUMN FOOTINGS OR PAD FOOTINGS.
- MECHANICAL CONTRACTOR MUST REVIEW ALL ARCHITECTURAL DRAWINGS FOR EXACT LOCATION OF PLUMBING FIXTURES, ROOF, OVERFLOW AND FLOOR DRAINS. IF PLUMBING FIXTURES OR DRAINS ARE SHOWN ON THE ARCHITECTURAL DRAWINGS THEY MUST BE INCLUDED IN THE CONTRACT EVEN IF NOT SHOWN ON THE MECHANICAL DRAWINGS.
- WHERE THE BUILDING SEWER IS INSTALLED WITHIN 10 FEET OF THE WATER SERVICE THE WATER SERVICE PIPE SHALL BE A MINIMUM OF 12 INCHES ABOVE THE TOP OF THE HIGHEST POINT OF THE SEWER. REQUIRED SEPARATION DISTANCE SHALL NOT APPLY WHERE A WATER SERVICE PIPE CROSSES A SEWER PIPE & SLEEVED 10 FEET HORIZONTALLY FROM THE SEWER PIPE CENTERLINE ON BOTH SIDES OF SUCH PIPE CROSSINGS.
- DO NOT SCALE DIRECTLY FROM THE PLUMBING DRAWINGS. REFER TO ARCHITECTURAL DRAWINGS FOR ALL DIMENSIONAL INFORMATION.
- ALL PLUMBING SANITARY WASTE AND VENT PIPING INSTALLED IN FIRE RATED WALLS OR PLENUM RETURN AIR SYSTEMS SHALL BE CAST IRON. REFER TO ARCHITECTURAL PLANS FOR LIFE SAFETY INFORMATION.

PLUMBING KEYED NOTES

- INSTALL AN APPROVED TRAP GUARD PRODUCT THAT CONFORMS TO NSF-14, CSA B602-99 AND CSA B74-94.
- COORDINATE UNDERSLAB PIPING WITH STRUCTURAL FOOTINGS. REFER TO STRUCTURAL PLANS FOR LOCATIONS AND SIZES OF FOOTINGS.
- PROVIDE AND INSTALL 6 INCH DIRT LEG AND GAS STOP (BALL VALVE ONLY) AT ALL EQUIPMENT GAS CONNECTIONS. REFER TO DETAIL T/P3.1.
- MECHANICAL CONTRACTOR SHALL NOT INSTALL ANY WATER LINES ABOVE ELECTRICAL PANELS. REFER TO ELECTRICAL PLANS FOR PANEL LOCATIONS.
- IDENTIFY OUTDOOR UNDERGROUND LINES WITH CONTINUOUS STRIP OF PLASTIC UTILITY MARKER. TAPE SHOULD STATE AT REGULAR INTERVALS: "CAUTION (STATE UTILITY) PIPE BELOW". INSTALL TAPE ONE FOOT DIRECTLY ABOVE PIPE BEFORE BACKFILLING TO GRADE.
- MECHANICAL CONTRACTOR TO PROVIDE REDUCED PRESSURE BACKFLOW PREVENTER (RPZ) AND PRESSURE REDUCING VALVE (IF REQUIRED) AT THE DOMESTIC WATER SERVICE ENTRANCE IN BUILDING. THERE SHALL BE NO WYES OR TEES PRIOR TO THE RPZ. PROVIDE WATTS MODEL LF404 OR APPROVED EQUAL RPZ. REFER TO 5/P3.2 FOR DETAIL.
- MAINTAIN A MINIMUM OF 10 FOOT CLEARANCE BETWEEN THE NEW WATER LINES AND NEW SANITARY SEWER PIPE.
- MECHANICAL CONTRACTOR SHALL INSTALL DUCTILE IRON SLEEVE ON NEW WATER LINES WHERE THEY CROSS ABOVE ANY SANITARY SEWER LINES. SLEEVE SHALL BE 10 FEET IN BOTH DIRECTIONS OF THE SANITARY SEWER PIPE CENTER LINE.

PLUMBING LEGEND

	SANITARY WASTE PIPING
	EXISTING SANITARY WASTE PIPING
	GREASE SANITARY WASTE PIPING
	VENT PIPING
	COLD WATER PIPING
	EXISTING COLD WATER PIPING
	HOT WATER PIPING
	HOT WATER RETURN PIPING
	MEDIUM PRESSURE GAS PIPING (5 PSIG)
	LOW PRESSURE GAS PIPING (11 IN. W.C.)
	CONDENSATE DRAIN PIPING
	ROOF DRAIN PIPING
	OVER FLOW DRAIN PIPING
	STORM DRAIN PIPING
	FIRE LINE
	FIRE DEPARTMENT CONNECTION
	BALL VALVE
	CHECK VALVE
	GAS REGULATOR EQUAL TO EQUI-METER MODEL 243. INLET PRESSURE @ 5 PSI, SET OUTLET PRESSURE @ 11 IN. W.C.
	GAS BALL VALVE
	CONNECTION POINT
	WATER HAMMER ARRESTOR (SIZE PER MANUFACTURER'S RECOMMENDED FIXTURE UNIT CAPACITY)
	REFER TO KEYED NOTES
	PLUMBING FIXTURE NUMBER (REFER TO PLUMBING FIXTURE SCHEDULE)
	CLEAN OUT TO GRADE
	FLOOR DRAIN
	FLOOR SINK
	FREEZE PROOF HOSE BIB
	HOSE BIB
	ACCESSIBLE
	HUB DRAIN
	WALL CLEAN OUT
	WATER HEATER
	SANITARY SEWER
	ROOF DRAIN

NOTES:

REFER TO SHEET U2.1 FOR UTILITY SITE PLAN.
REFER TO SHEET P1.1 FOR PLUMBING NOTES & LEGEND.
REFER TO SHEETS P2.1 & P2.1 FOR PLUMBING PLANS.
REFER TO SHEETS P3.1 & P3.2 FOR PLUMBING DETAILS.
REFER TO SHEETS P4.1 THRU P4.3 FOR PLUMBING RISERS.
REFER TO SHEET P5.1 FOR PLUMBING SCHEDULES.
REFER TO SHEET MP2.1 FOR MECHANICAL ROOF PLAN.



HSAEngineering
479 / 452 / 8922 office
7405 Ellis St.
Fort Smith, AR 72916
HSAConsultants.com

HSA JOB # 24-139



Hight Jackson
ASSOCIATES
5201 W Village Parkway, Suite 300 | Rogers, Arkansas 72768 | (479) 464-4965 | www.hjarch.com

A NEW FACILITY FOR
Thaden Competition Gym
911 S MAIN ST, Bentonville, AR 72712

DRAWN BY:

KPH

CHECK BY:

NEW

ISSUE DATE

1/22/2025

PROJECT NO.

2335.3

REVISION DATES

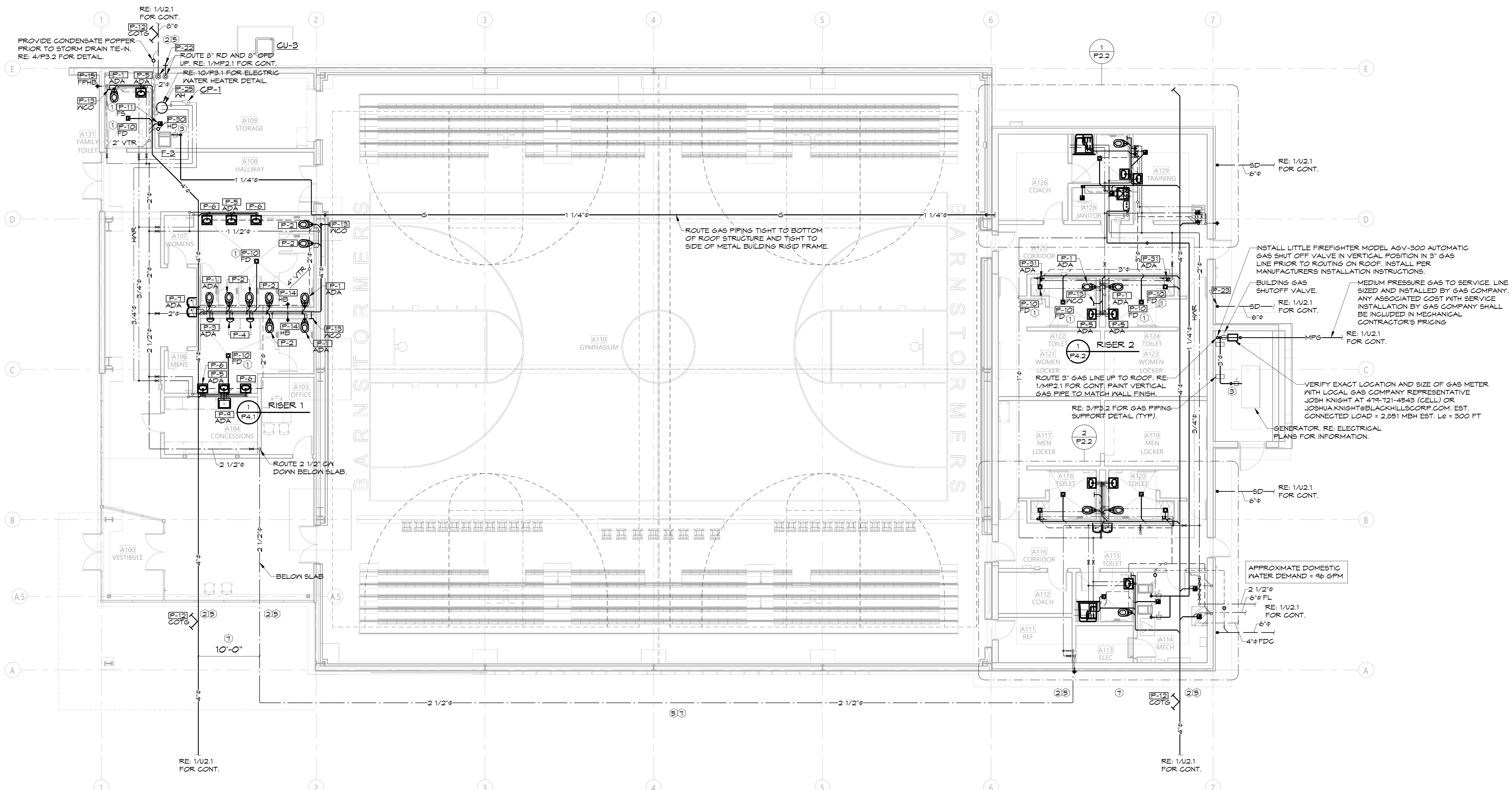
01/24/2025

PLUMBING NOTES & LEGEND

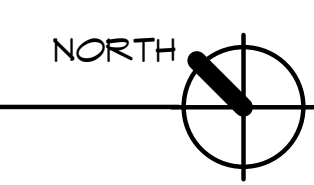
S H E E T

P1.1

COPYRIGHT 2025
THESE DRAWINGS AND SPECIFICATIONS ARE THE EXCLUSIVE PROPERTY OF HIGHT JACKSON ASSOCIATES P.A. USE OR REPRODUCTION IS PROHIBITED WITHOUT WRITTEN CONSENT.



1 PLUMBING PLAN
1/8" = 1'-0"



NOTES:
REFER TO SHEET U2.1 FOR UTILITY SITE PLAN.
REFER TO SHEET P1.1 FOR PLUMBING NOTES & LEGEND.
REFER TO SHEETS P2.1 & P2.1 FOR PLUMBING PLANS.
REFER TO SHEETS P3.1 & P3.2 FOR PLUMBING DETAILS.
REFER TO SHEETS P4.1 THRU P4.3 FOR PLUMBING RISERS.
REFER TO SHEET P5.1 FOR PLUMBING SCHEDULES.
REFER TO SHEET MP2.1 FOR MECHANICAL ROOF PLAN.

HSA HSAEngineering
479 / 452 / 8922 office
7405 Ellis St.
Fort Smith, AR 72916
HSAConsultants.com

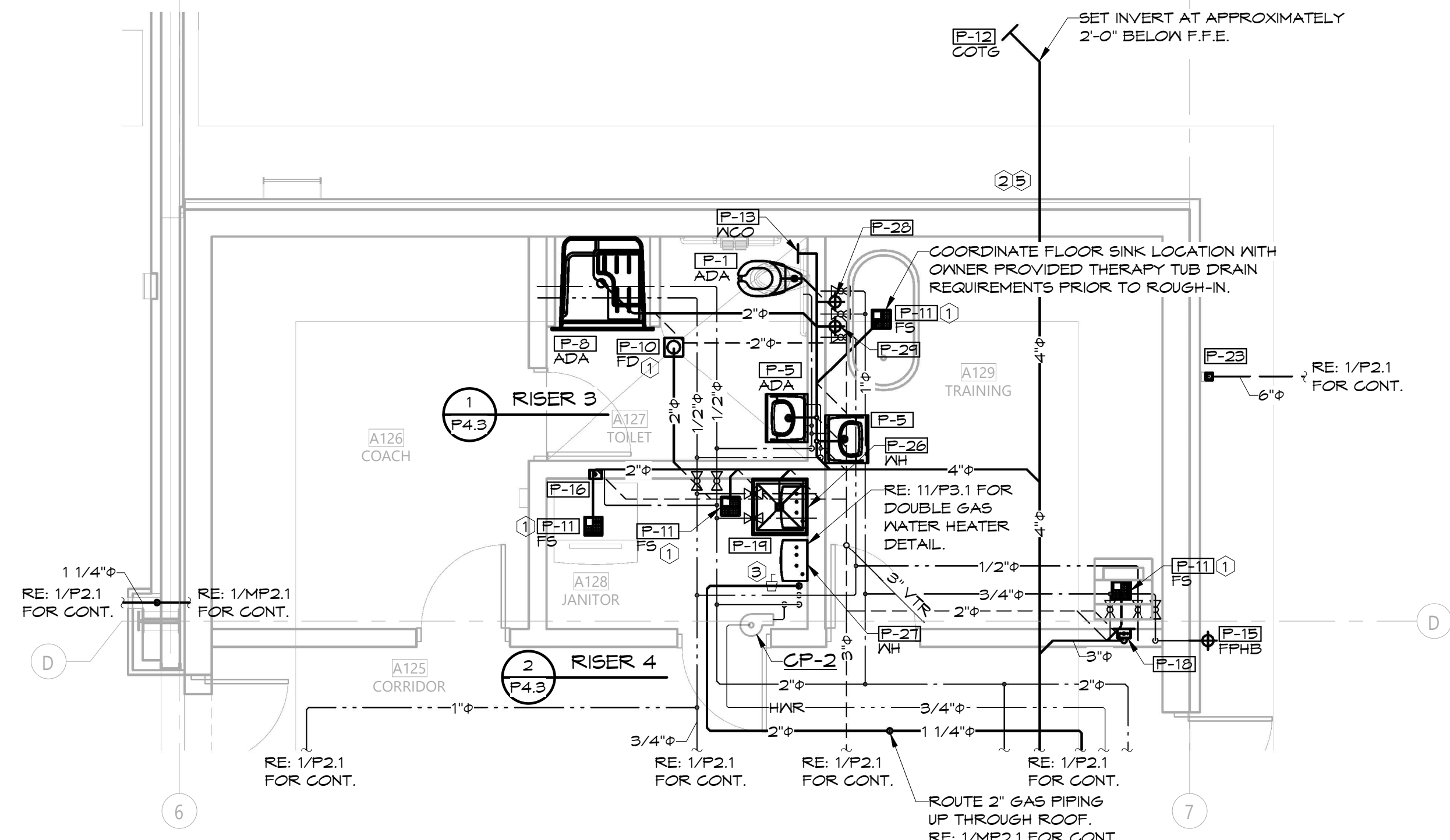


Hight Jackson
ASSOCIATES
5201 W Village Parkway, Suite 300 | Rogers, Arkansas 72768 | (479) 464-4965 | www.hjarch.com

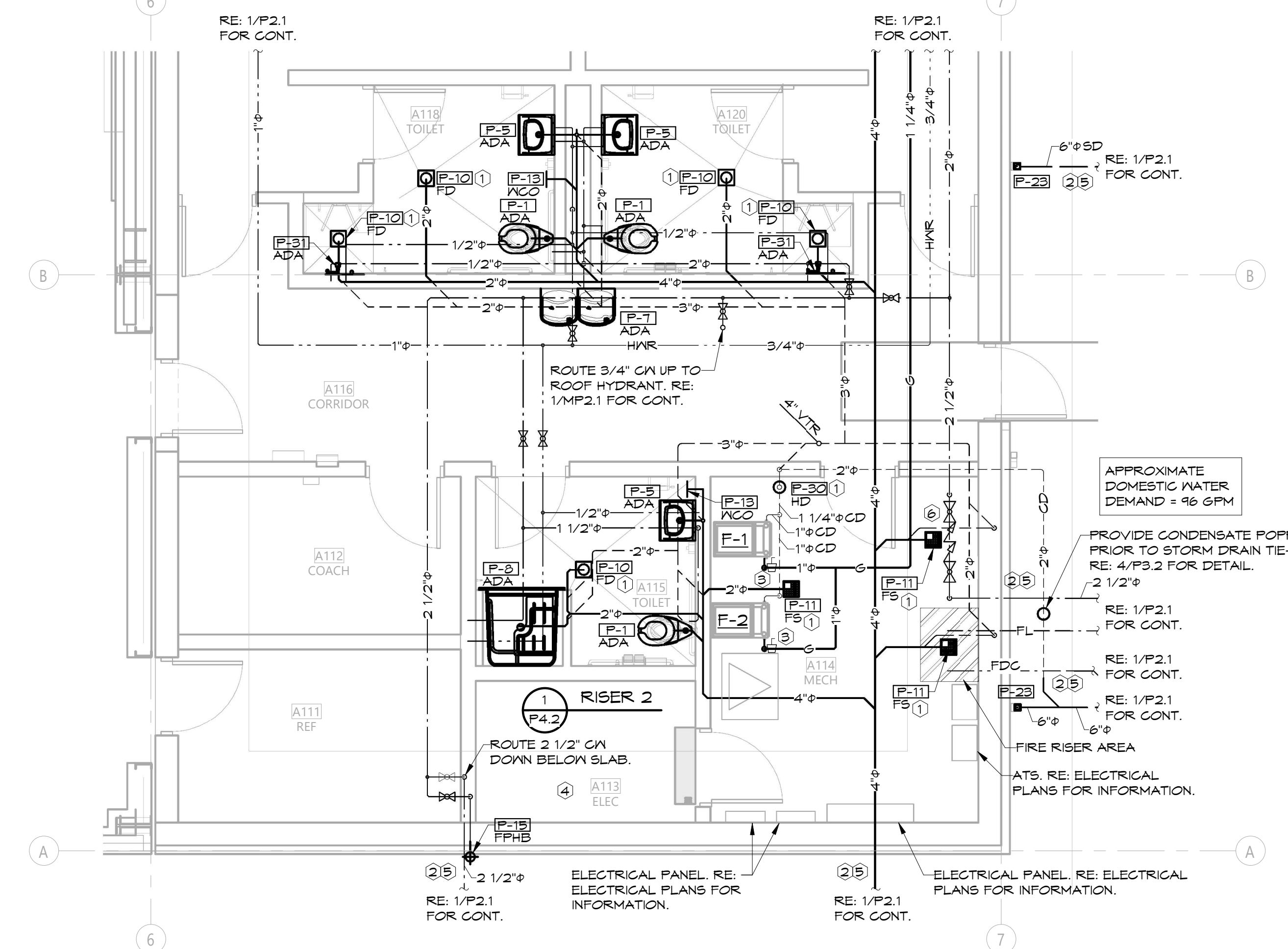
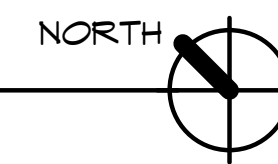
A NEW FACILITY FOR
Thaden Competition Gym
911 S MAIN ST, Bentonville, AR 72712

DRAWN BY:
KPH
CHECK BY:
NEW
ISSUE DATE:
1/22/2025
PROJECT NO:
2335.3
REVISION DATES:
01/24/2025

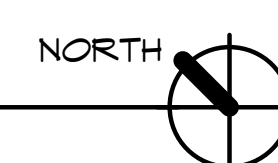
ENLARGED PLUMBING PLANS
SHEET
P.2.2
COPYRIGHT 2025
THESE DRAWINGS AND SPECIFICATIONS ARE THE EXCLUSIVE PROPERTY OF HIGHT JACKSON ASSOCIATES P.A. USE OR REPRODUCTION IS PROHIBITED WITHOUT WRITTEN CONSENT.



1 ENLARGED PLUMBING PLAN - A127, A128, A129
1/4" = 1'-0"



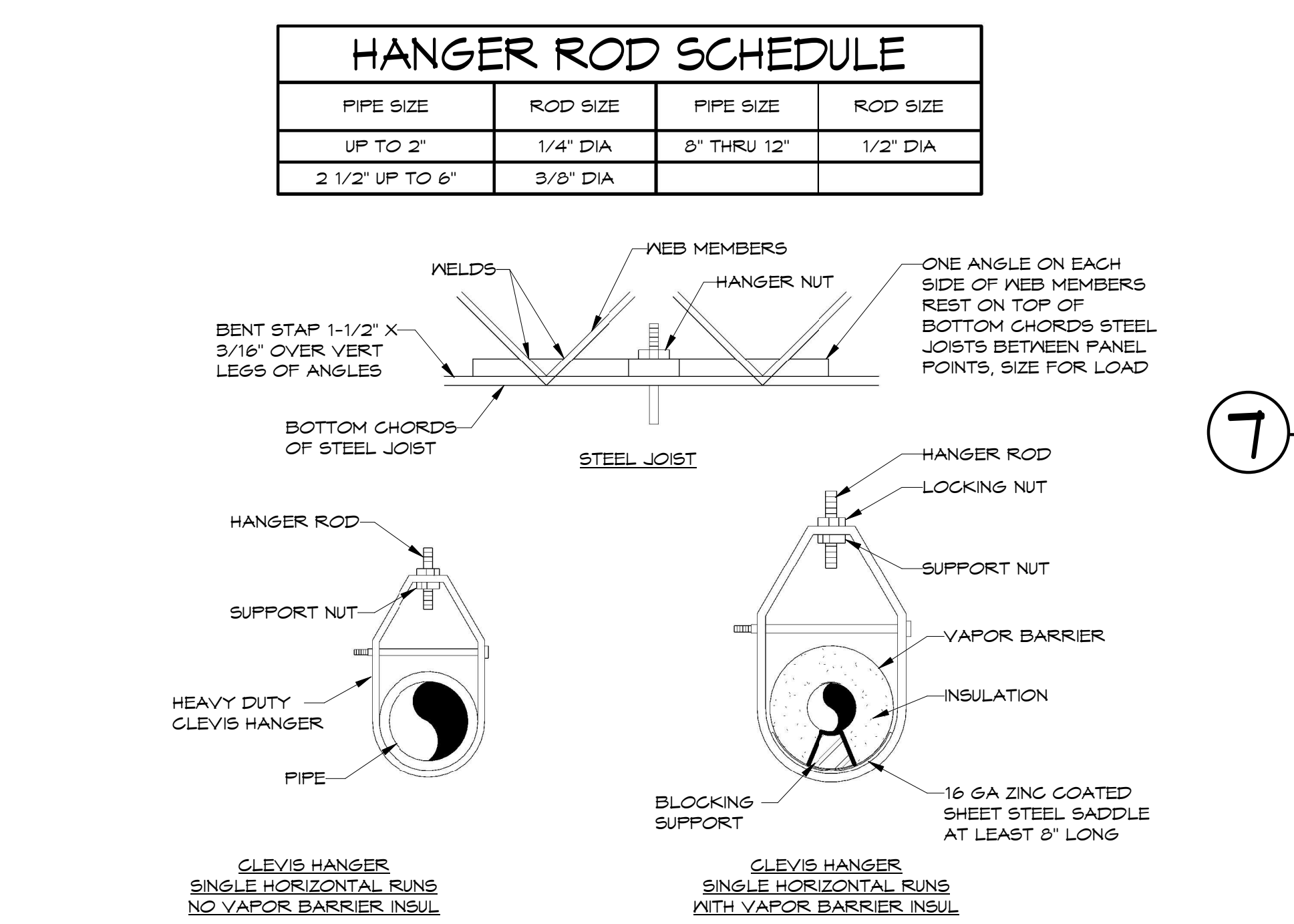
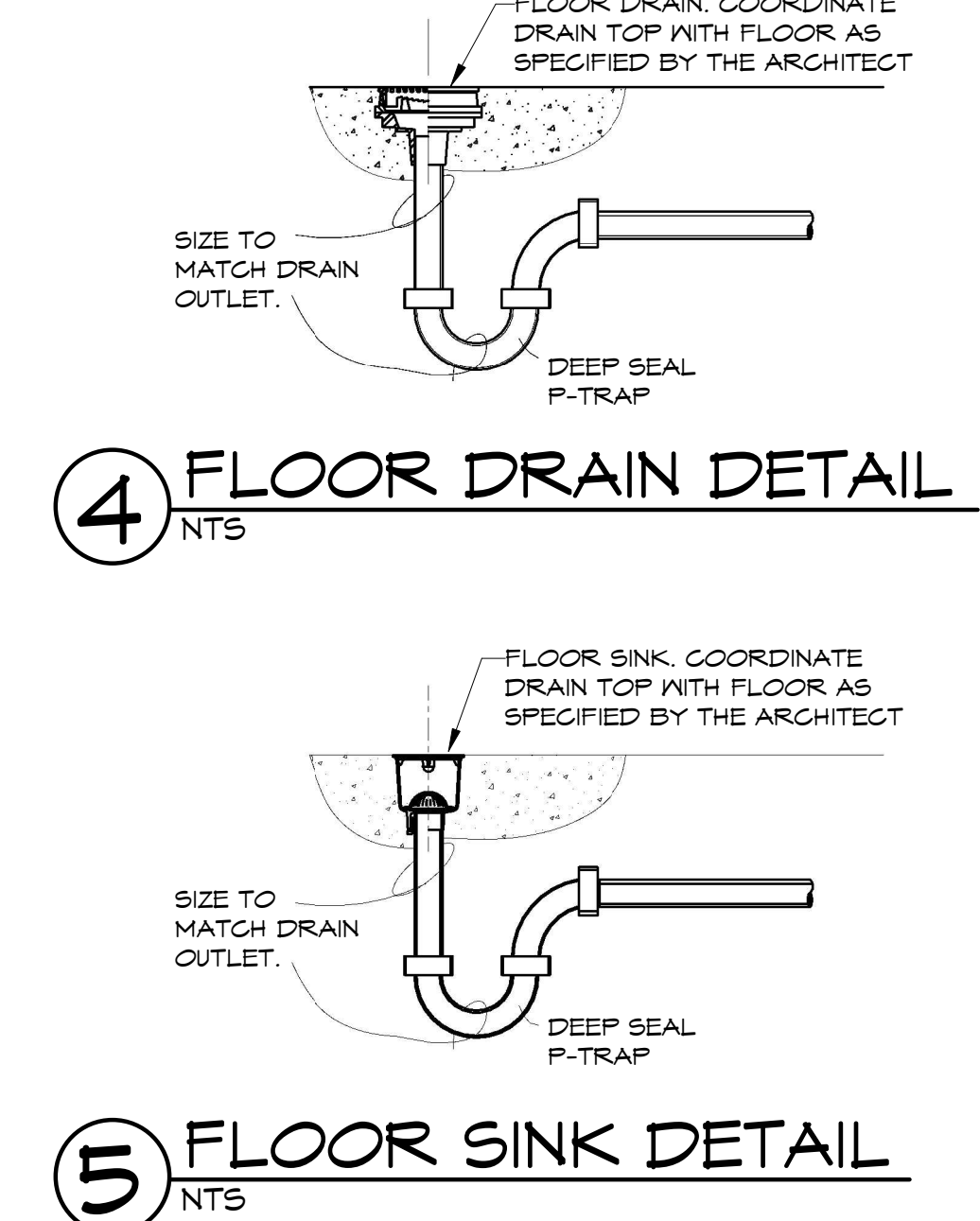
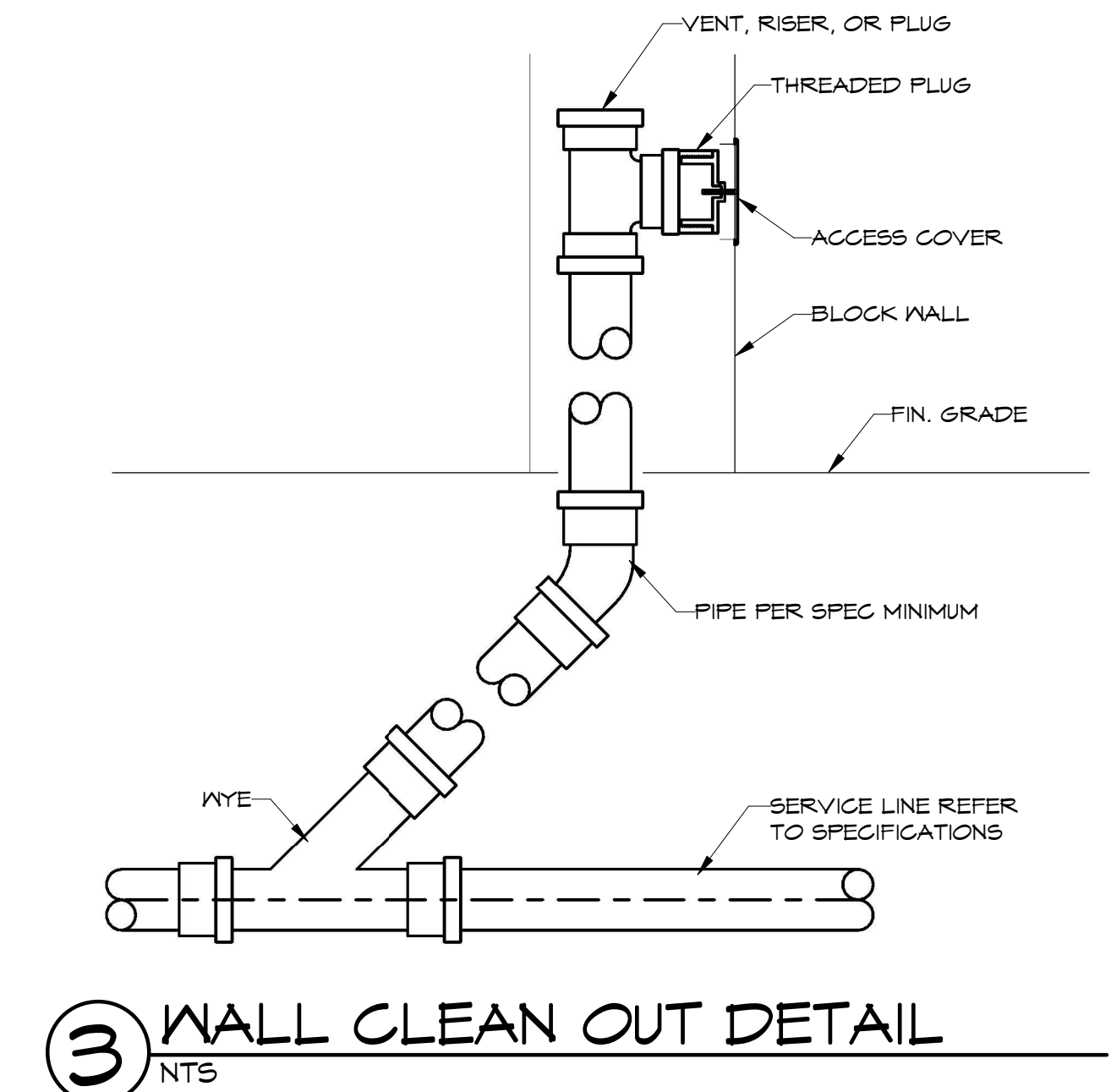
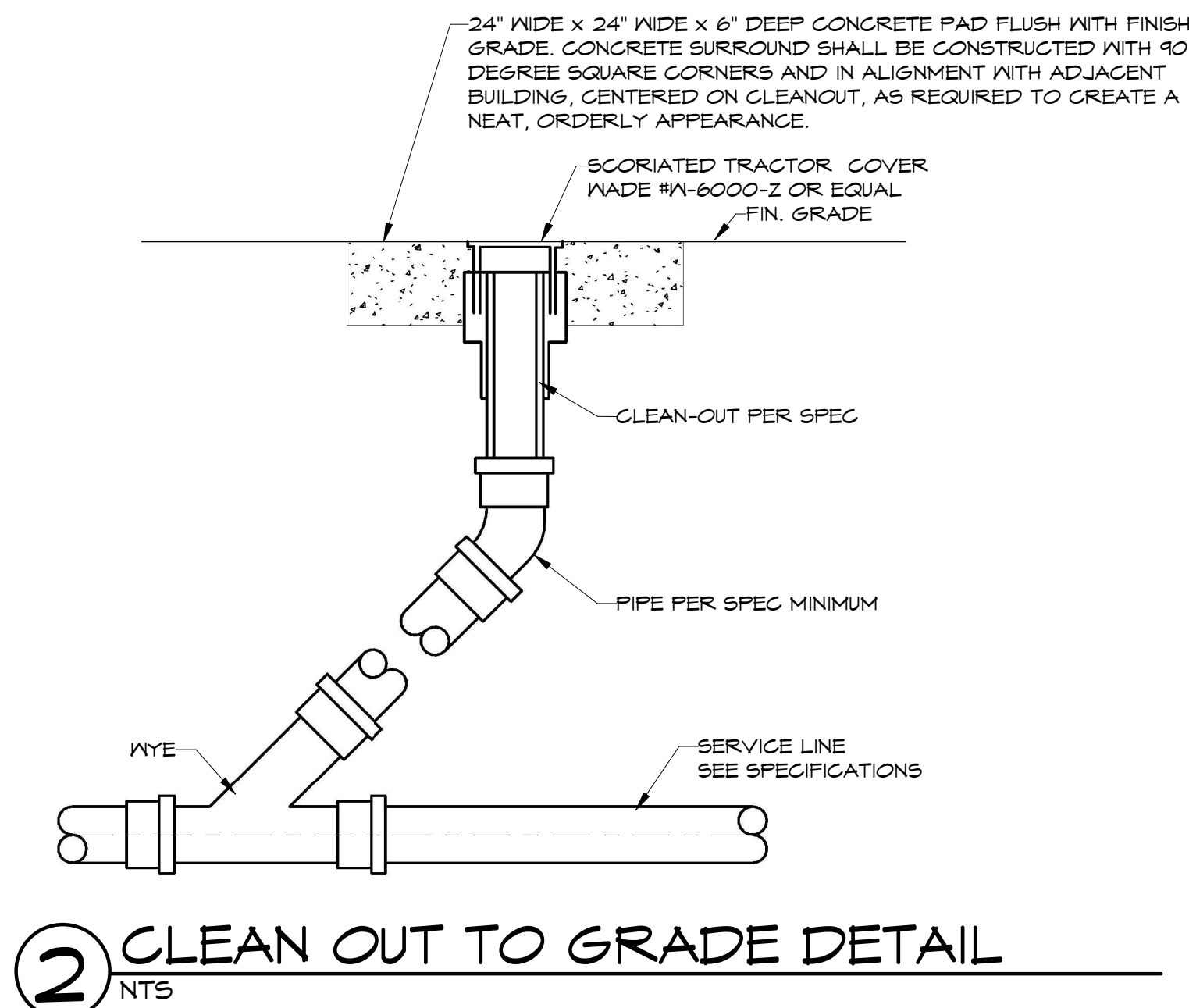
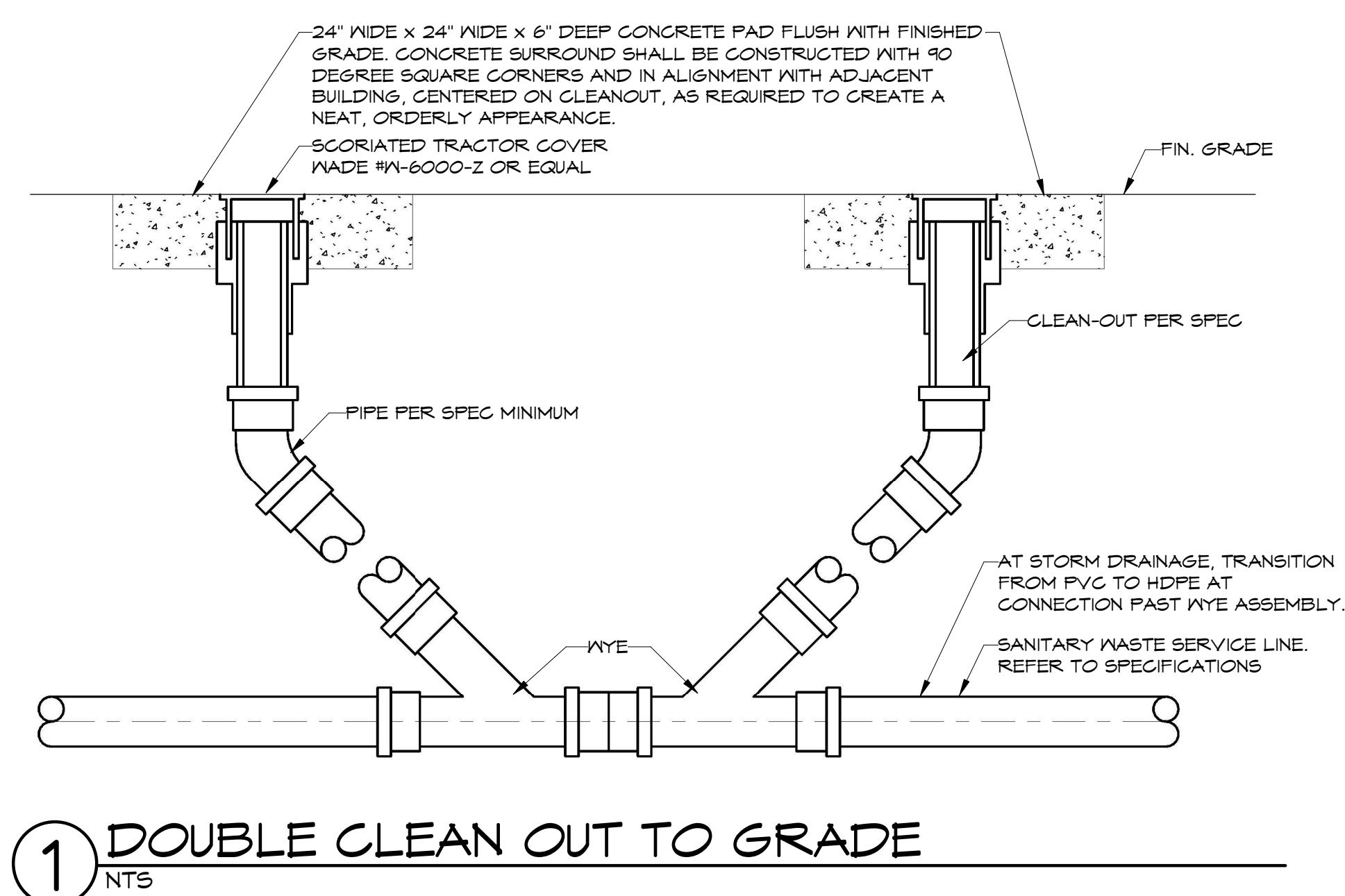
2 ENLARGED PLUMBING PLAN - A114, A115, A118, A120
1/4" = 1'-0"



NOTES:
REFER TO SHEET U2.1 FOR UTILITY SITE PLAN.
REFER TO SHEET P1.1 FOR PLUMBING NOTES & LEGEND.
REFER TO SHEETS P2.1 & P2.1 FOR PLUMBING PLANS.
REFER TO SHEETS P3.1 & P3.2 FOR PLUMBING DETAILS.
REFER TO SHEETS P4.1 THRU P4.3 FOR PLUMBING RISERS.
REFER TO SHEET P5.1 FOR PLUMBING SCHEDULES.
REFER TO SHEET MP2.1 FOR MECHANICAL ROOF PLAN.

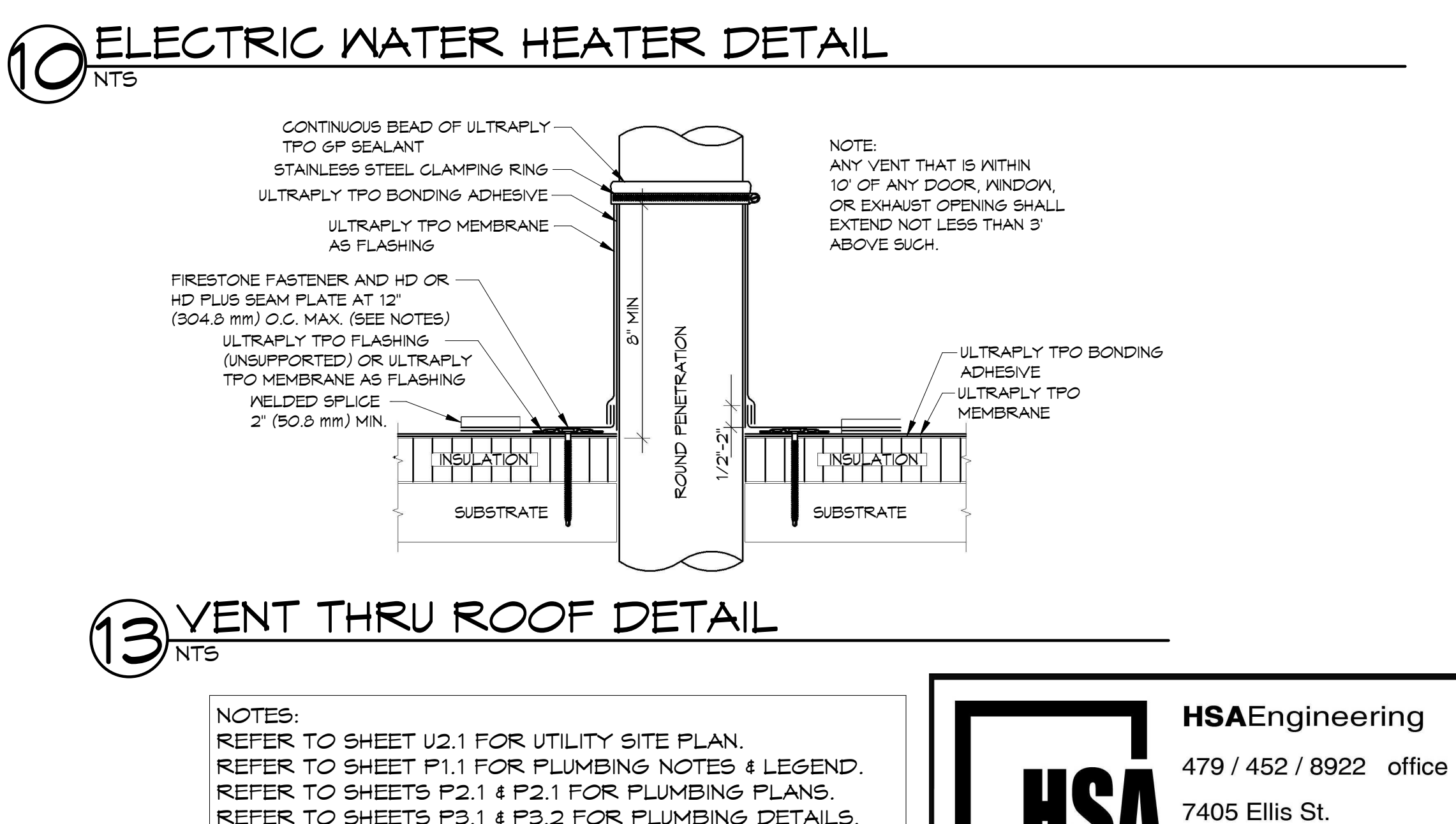
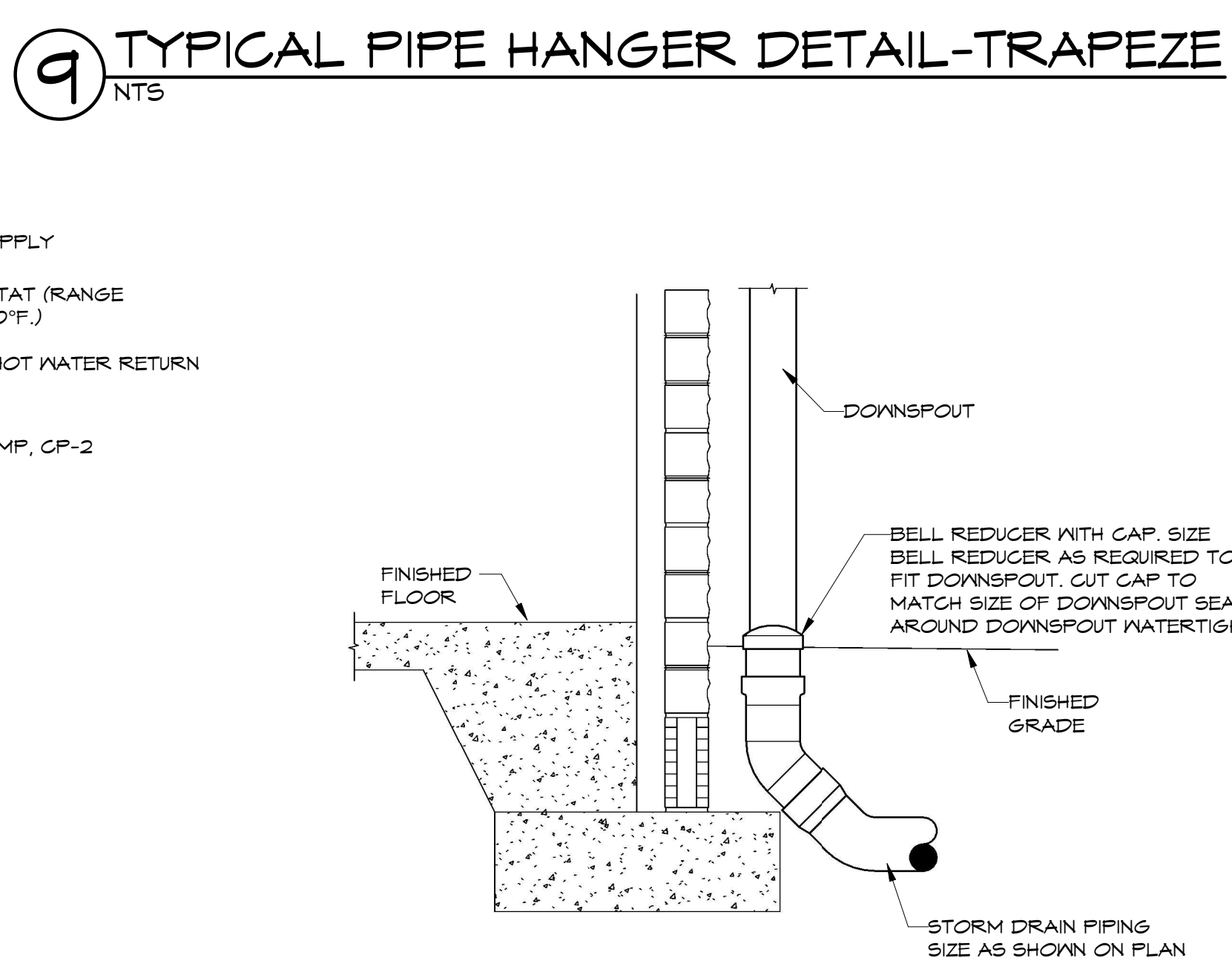
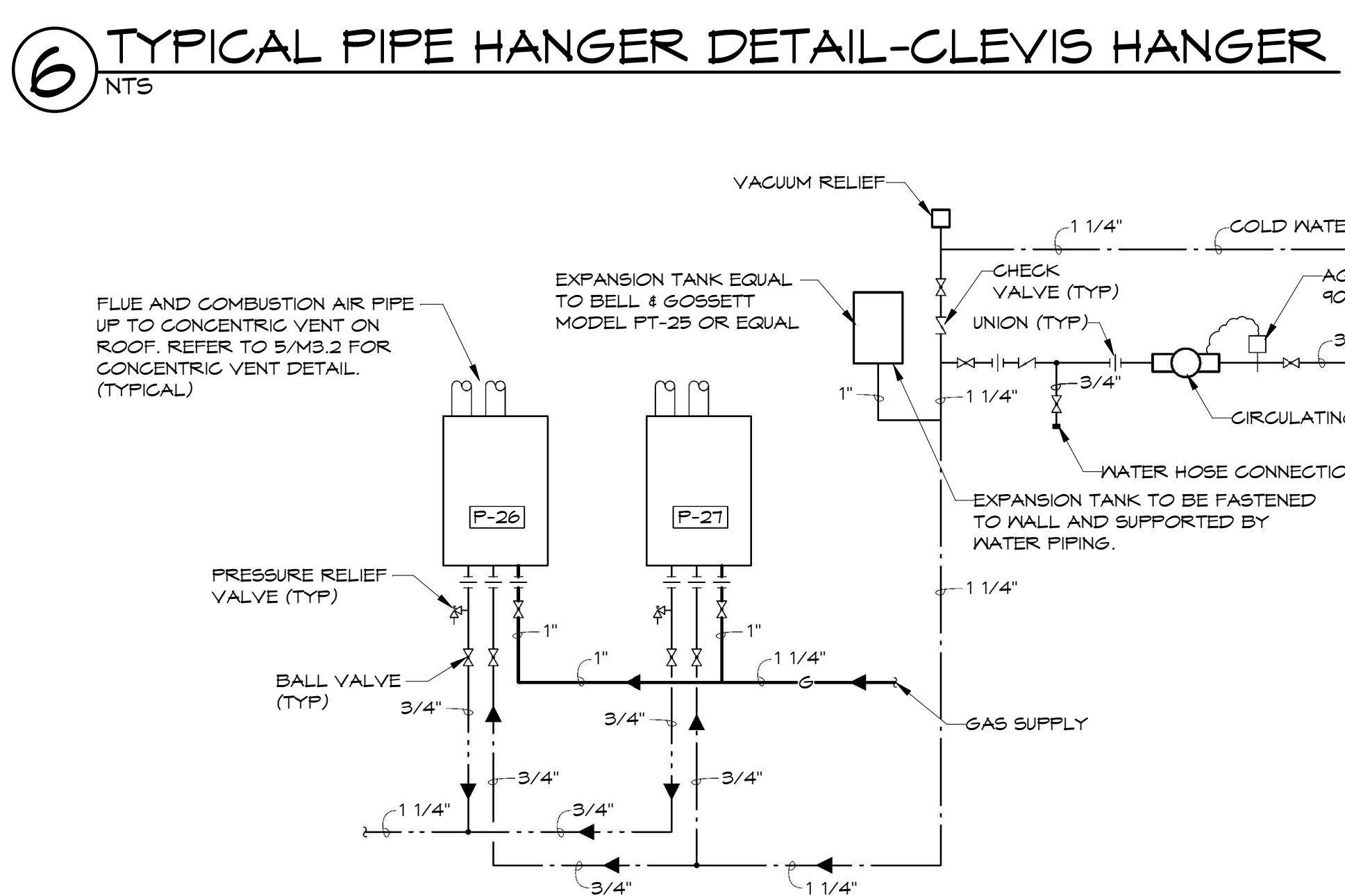
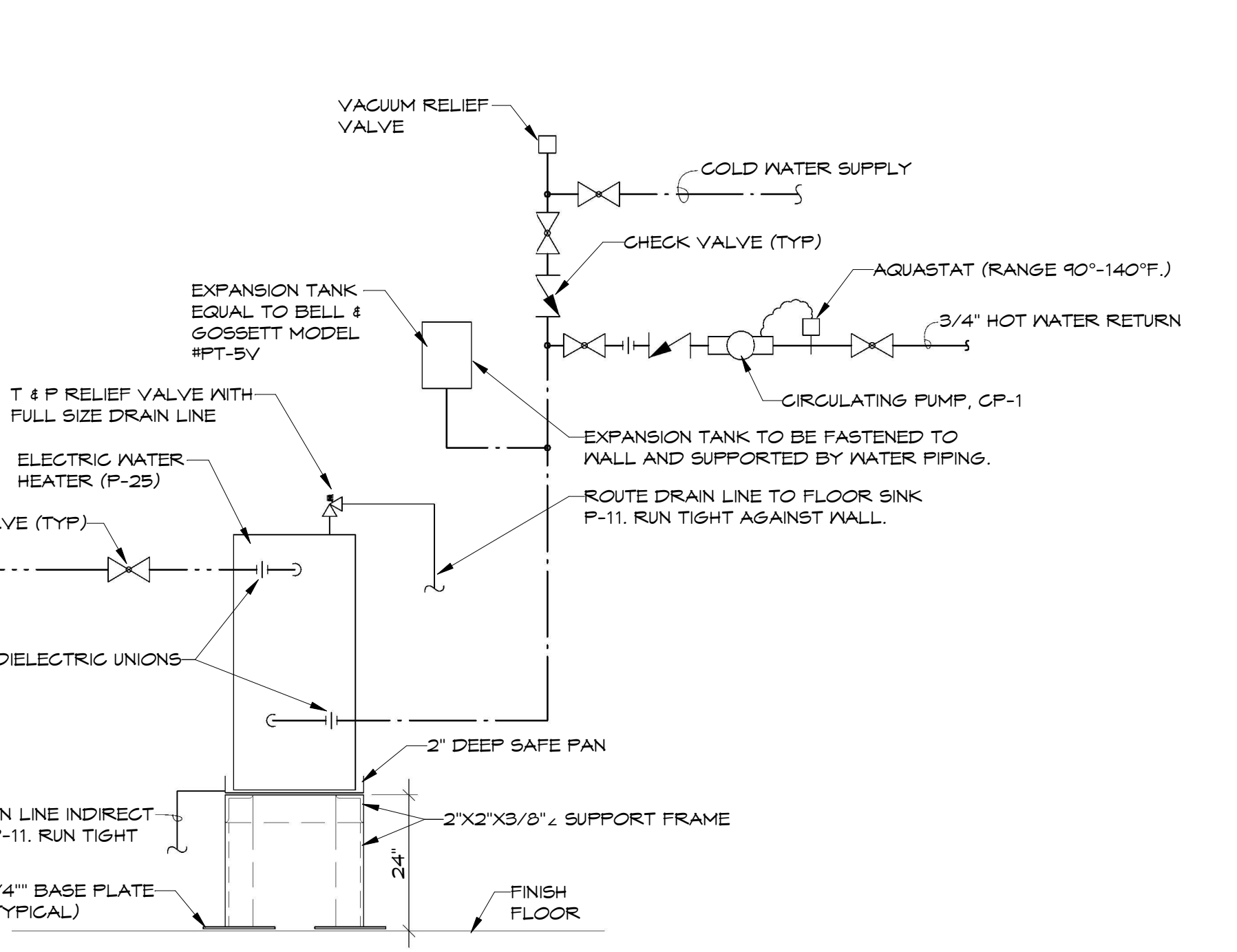
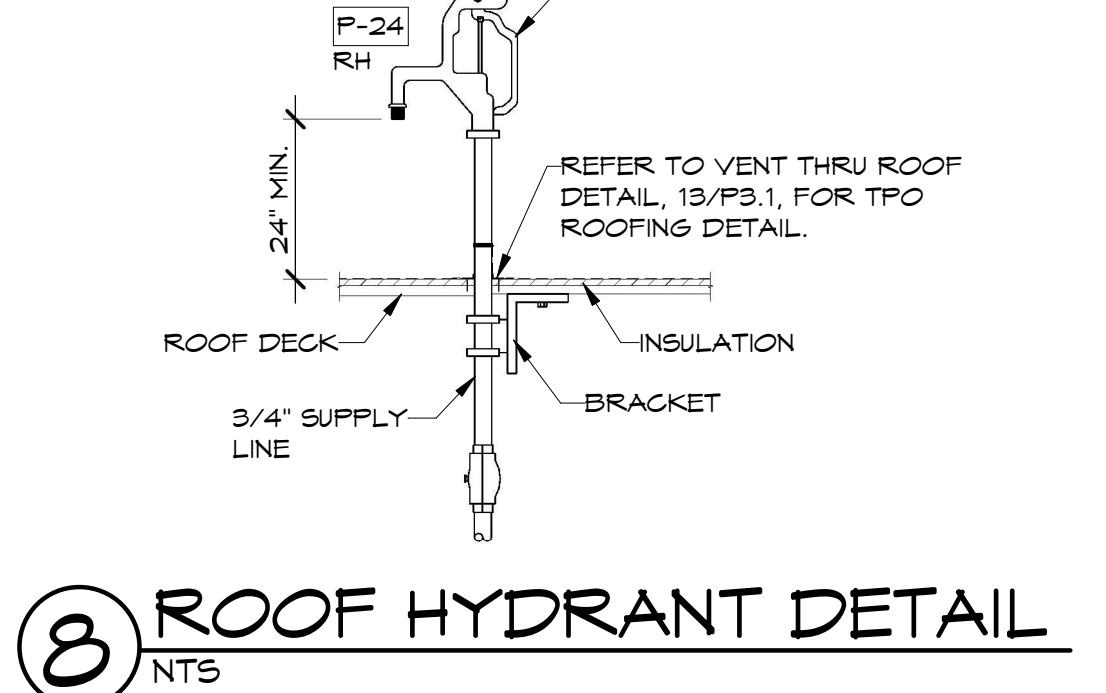
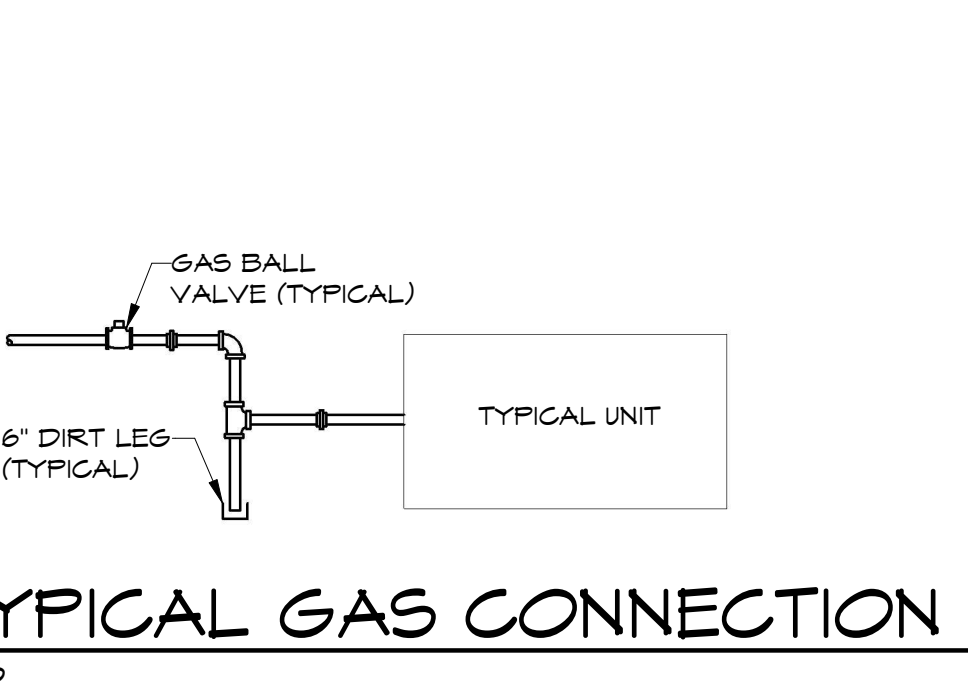
HSA Engineering
479 / 452 / 8922 office
7405 Ellis St.
Fort Smith, AR 72916
HSAConsultants.com

HSA JOB # 24-139



HANGER ROD SCHEDULE

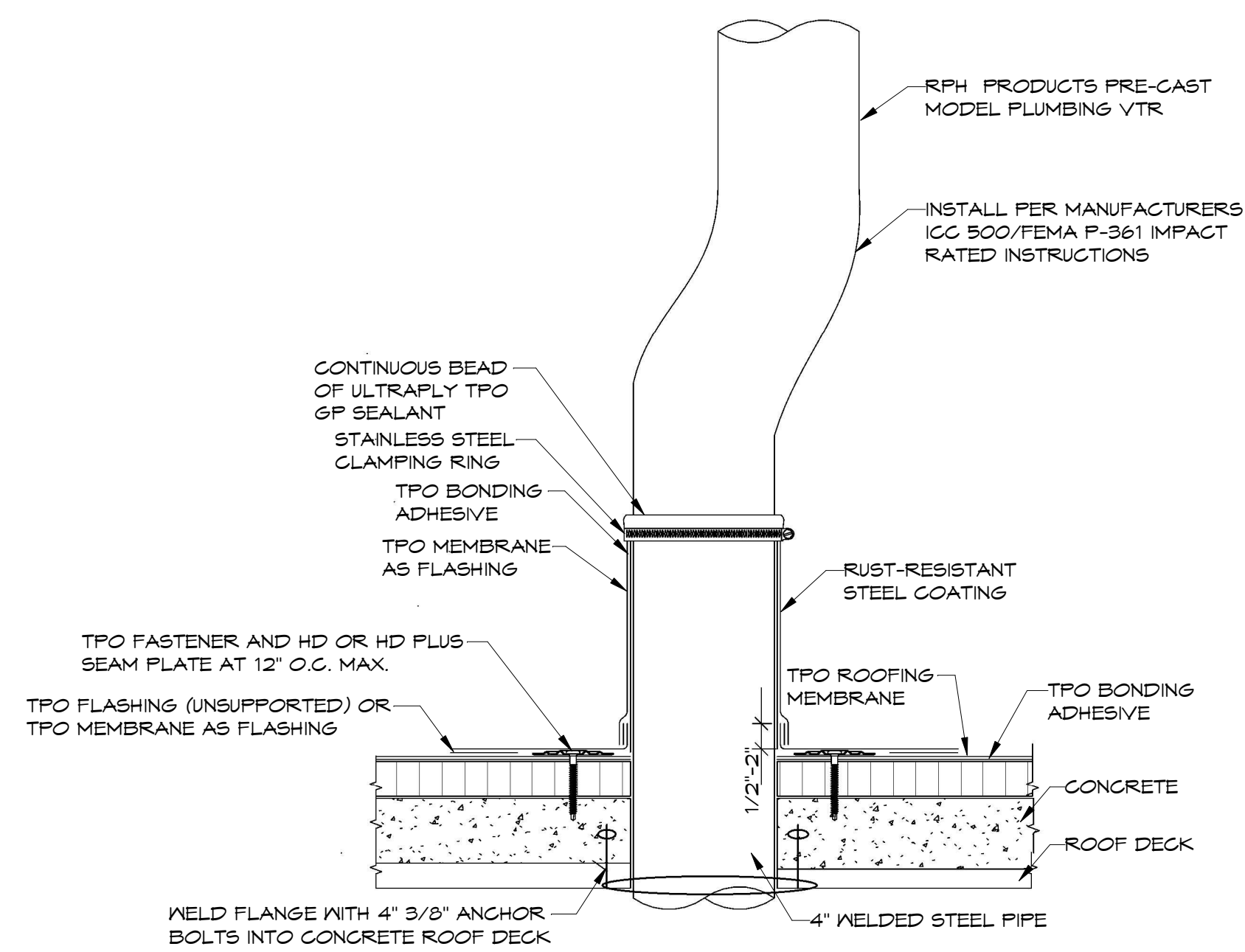
PIPE SIZE	ROD SIZE	PIPE SIZE	ROD SIZE
UP TO 2"	1/4" DIA	8" THRU 12"	1/2" DIA
2 1/2" UP TO 6"	3/8" DIA		



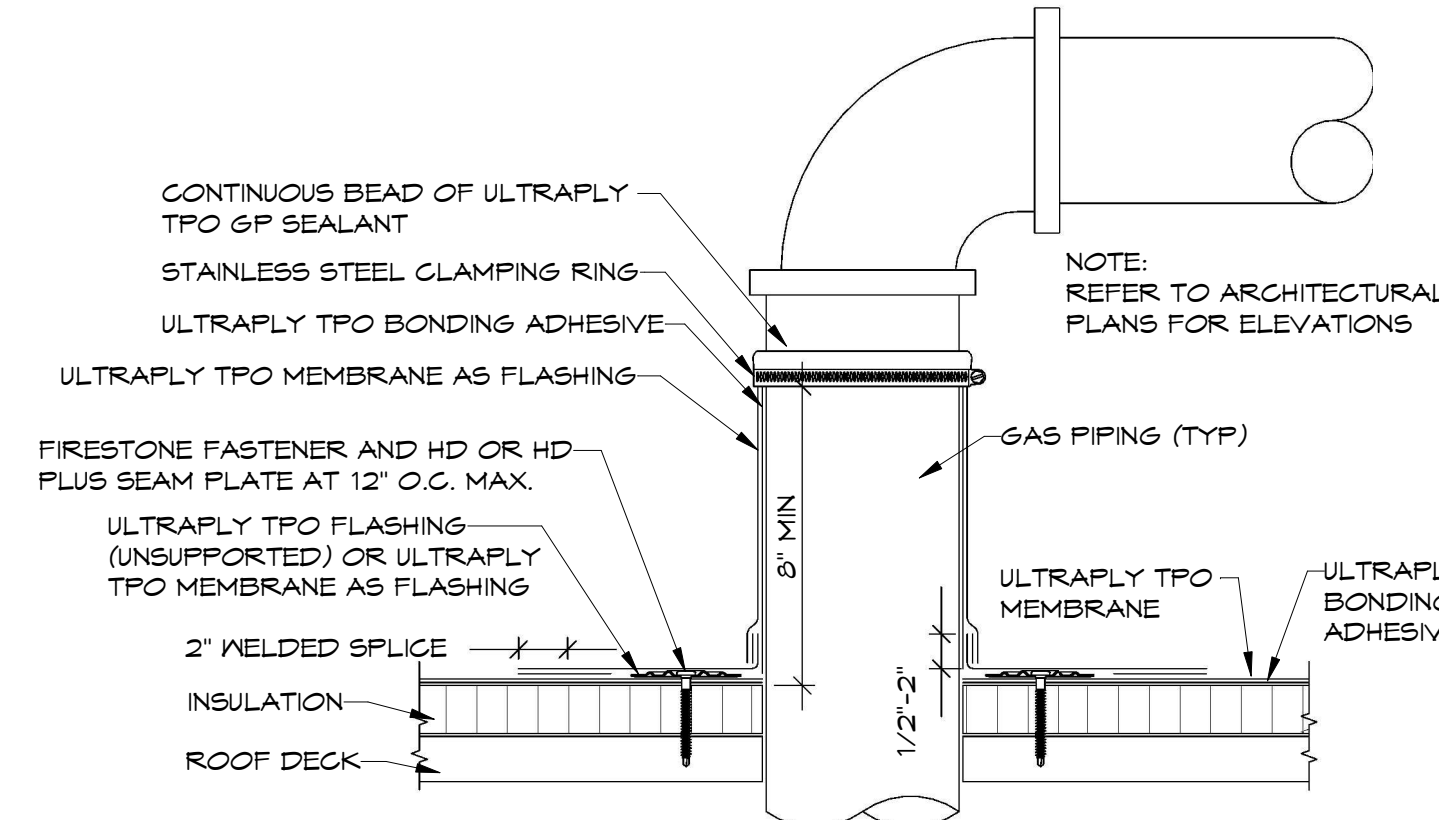
NOTES:
 REFER TO SHEET U2.1 FOR UTILITY SITE PLAN.
 REFER TO SHEET P1.1 FOR PLUMBING NOTES & LEGEND.
 REFER TO SHEETS P2.1 & P2.1 FOR PLUMBING PLANS.
 REFER TO SHEETS P3.1 & P3.2 FOR PLUMBING DETAILS.
 REFER TO SHEETS P4.1 THRU P4.3 FOR PLUMBING RISERS.
 REFER TO SHEET P5.1 FOR PLUMBING SCHEDULES.
 REFER TO SHEET MP2.1 FOR MECHANICAL ROOF PLAN.

HSAEngineering
 479 / 452 / 8922 office
 7405 Ellis St.
 Fort Smith, AR 72916
 HSAConsultants.com

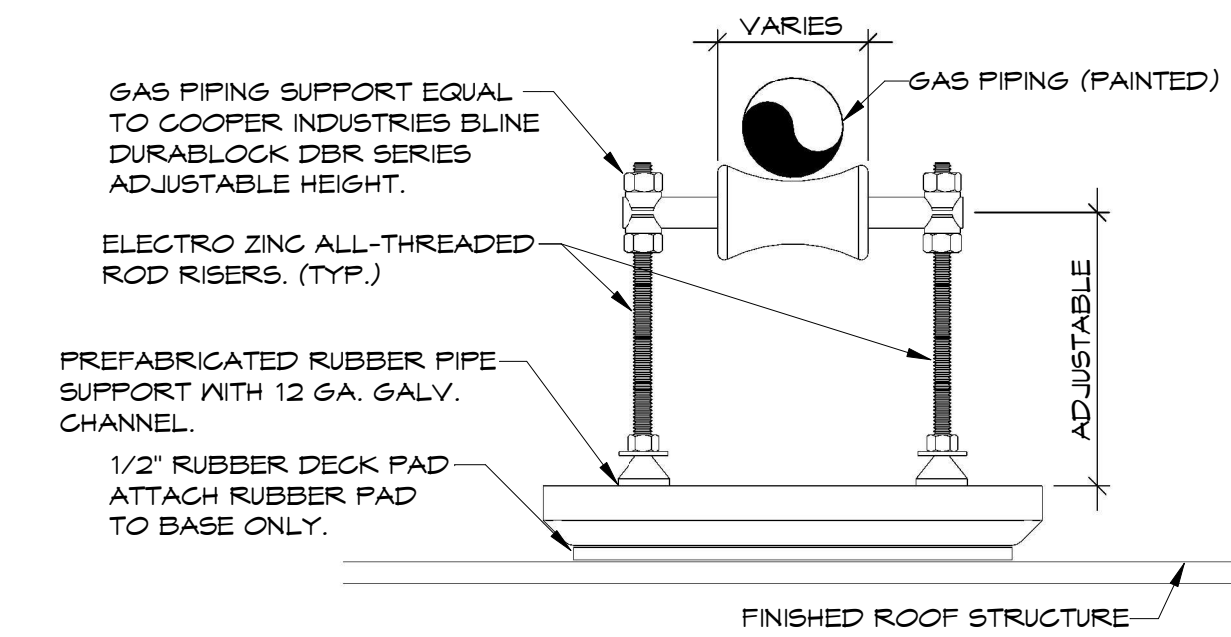
1 FEMA/ICC RATED VENT THRU ROOF DETAIL
N.T.S.



2 GAS PIPING PENETRATION (TPO) DETAIL
1/8" = 1'-0"

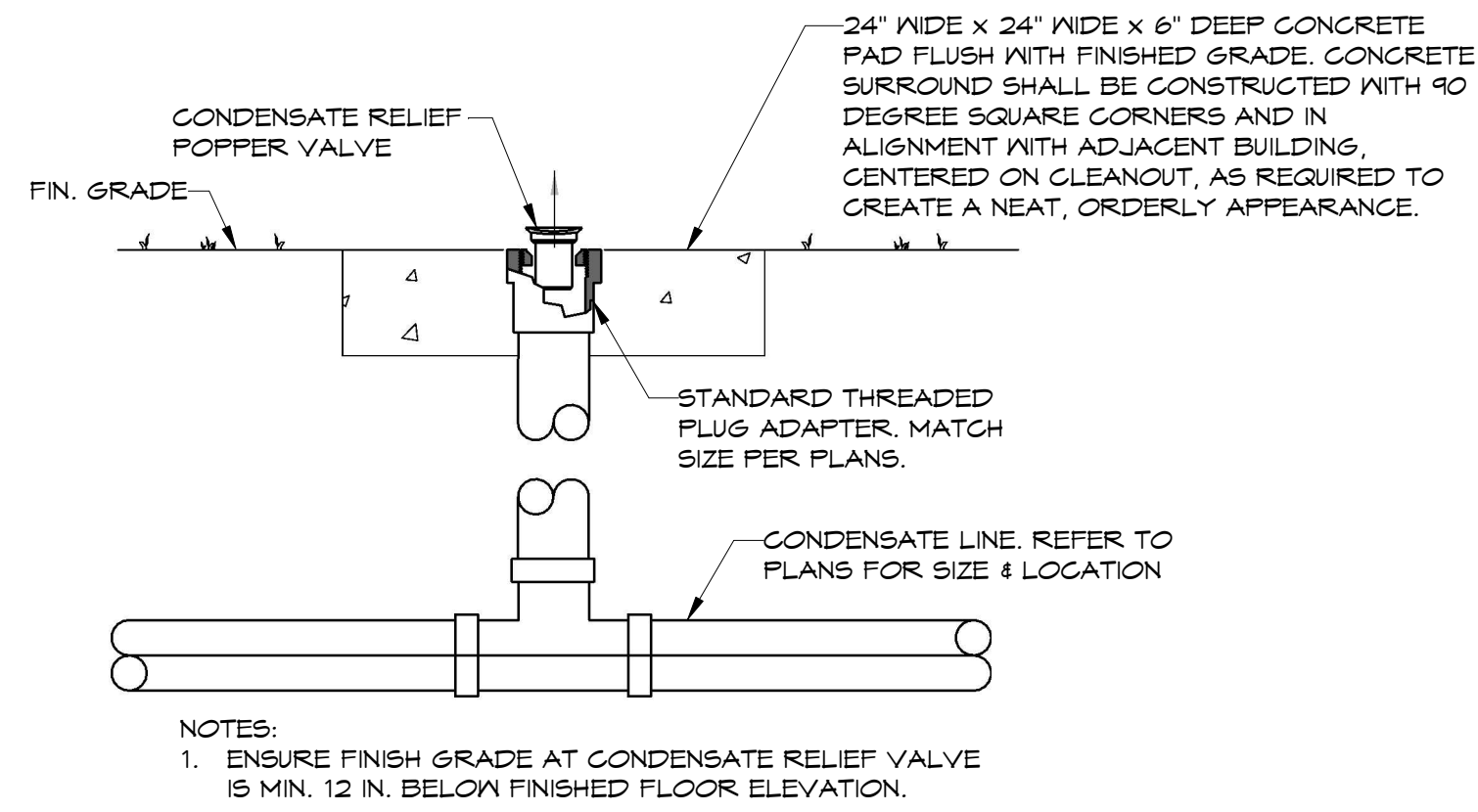


3 GAS PIPING SUPPORT DETAIL
NTS



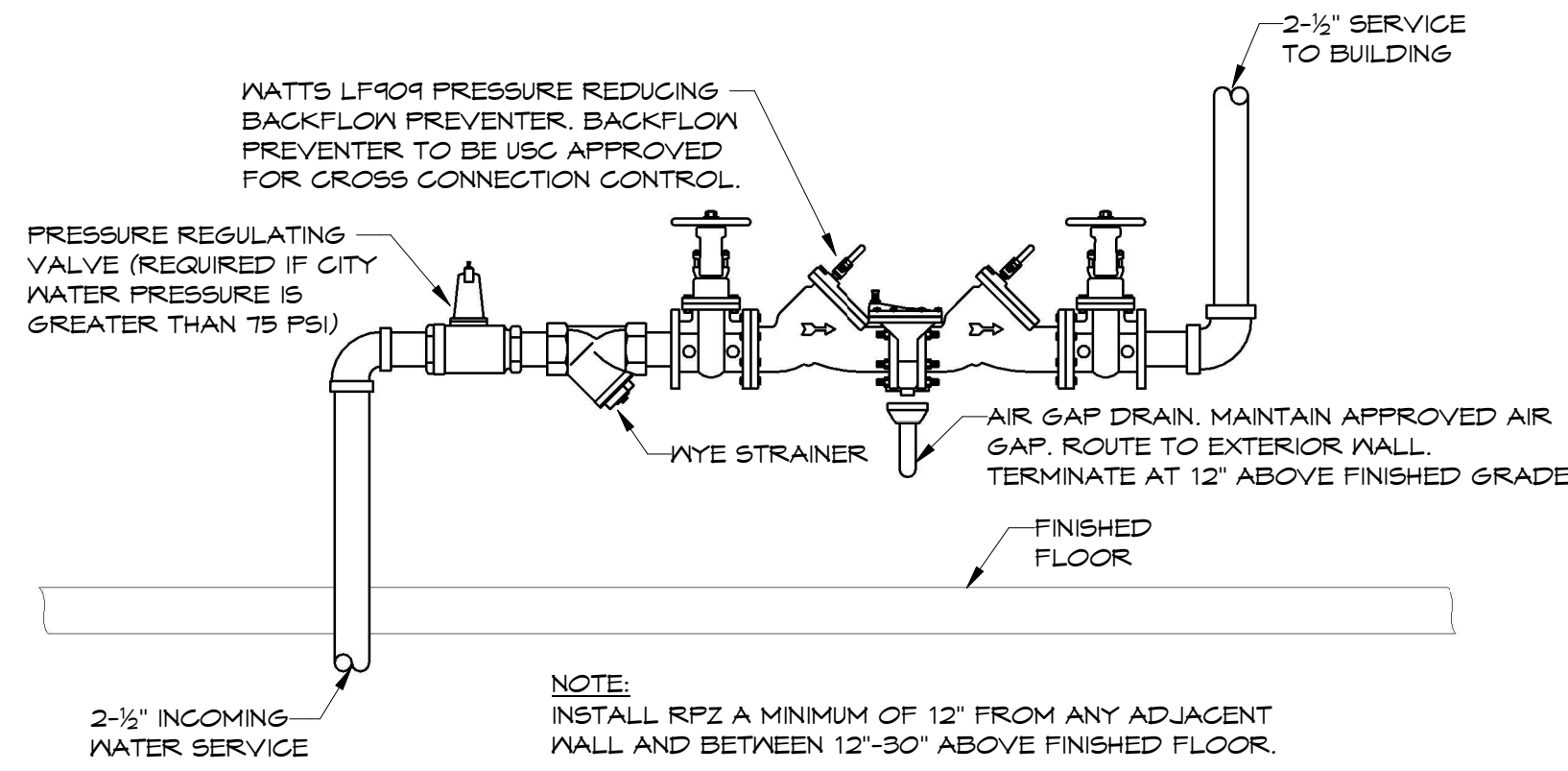
NOTES:
1. PIPING SHALL BE SUPPORTED AT ALL ELBOWS AND TEES AND AT 10 FT. MAX. SPACING.
2. GAS PIPING PENETRATIONS THRU ROOF SHALL BE MADE WATERTIGHT WITH APPROVED FITCH POCKETS.
3. SUPPORT BASE SHALL HAVE 1/2" MEMBRANE PAD AT ROOF SURFACE. ATTACH PAD TO BASE BOTTOM WITH WEATHERPROOF CEMENT.
4. DO NOT ATTACH BASE TO ROOF.
5. PROVIDE CLDPI0 LOAD DISTRIBUTION PLATE AS REQUIRED FOR GAS PIPING 3" DIAMETER AND LARGER.

4 CONDENSATE RELIEF POPPER DETAIL
NTS



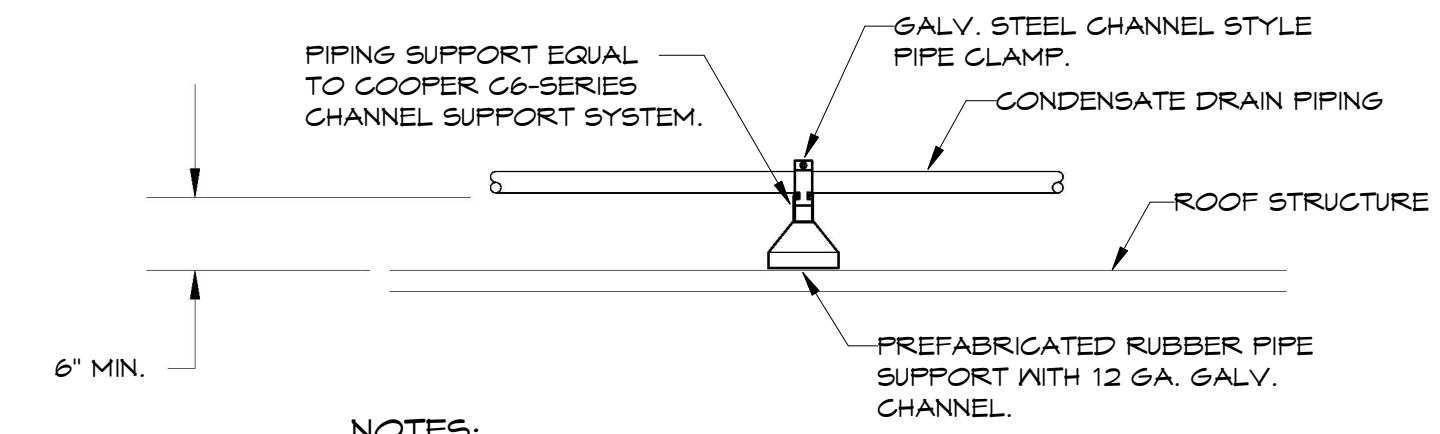
NOTES:
1. ENSURE FINISH GRADE AT CONDENSATE RELIEF VALVE IS MIN. 12 IN. BELOW FINISHED FLOOR ELEVATION.

5 DOMESTIC WATER RPZ DETAIL
NTS



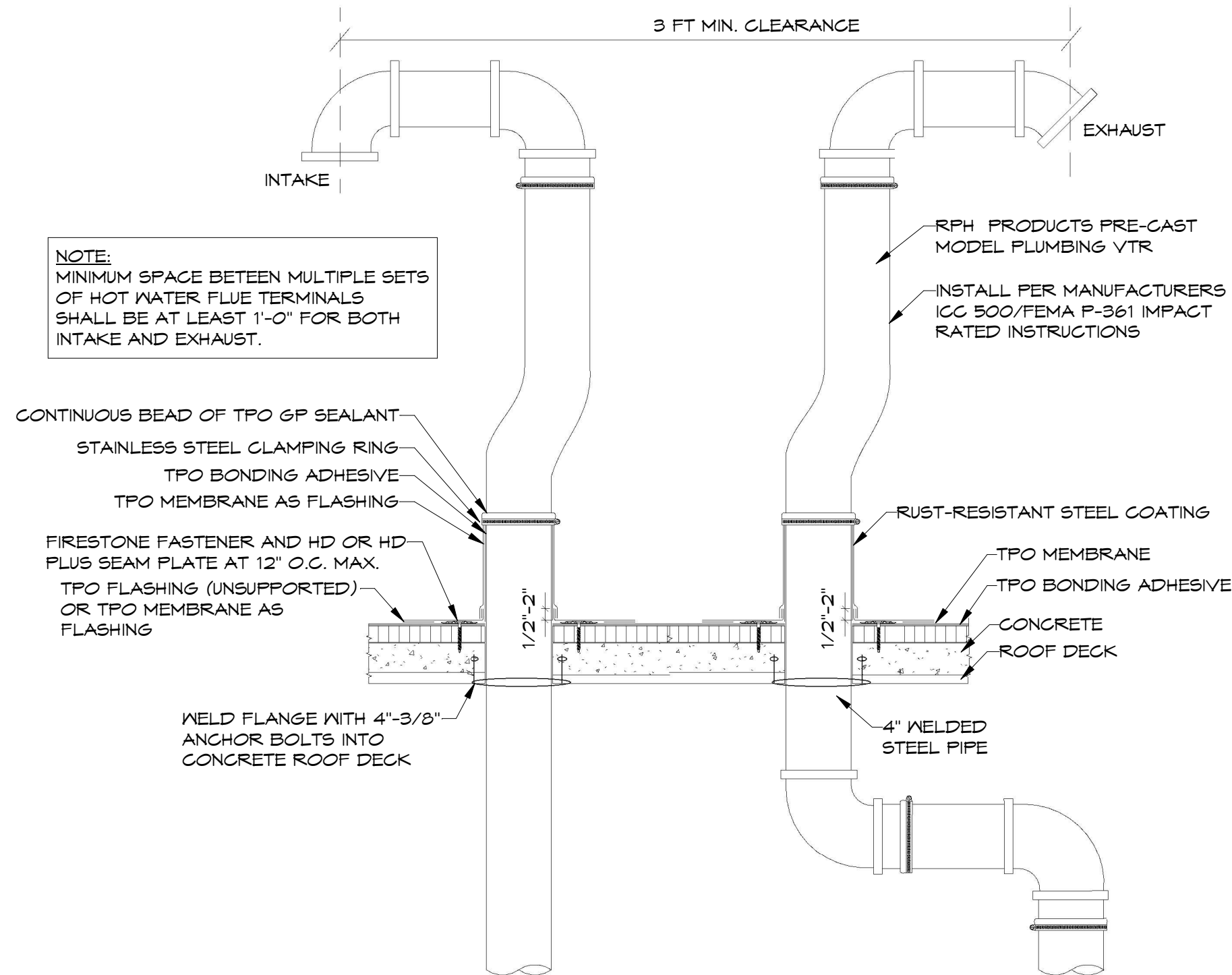
NOTE:
INSTALL RPZ A MINIMUM OF 12" FROM ANY ADJACENT WALL AND BETWEEN 12"-30" ABOVE FINISHED FLOOR.

6 CONDENSATE PIPE SUPPORT DETAIL
NTS

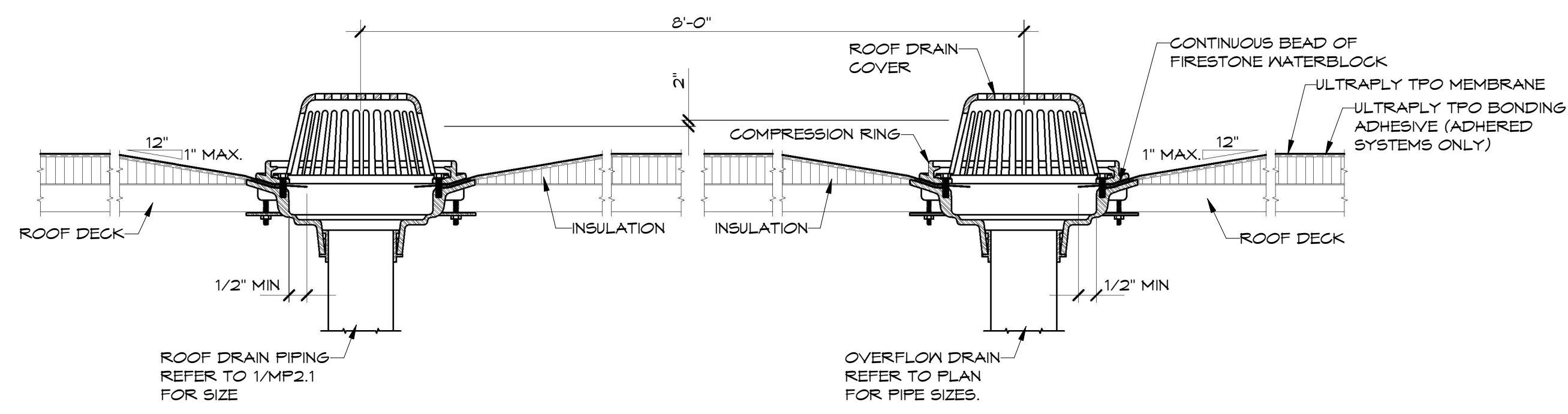


NOTES:
1. PIPING SHALL BE SUPPORTED AT ALL ELBOWS AND TEES AND AT 6 FT. MAX. SPACING. PIPING SHALL BE SLOPED AND ROUTED TO PREVENT TRAPPING CONDENSATE (EXCEPT AT DIRT LEGS) AND TO FACILITATE CONDENSATE DRAINAGE.
2. DO NOT ATTACH BLOCKING TO ROOF.

7 FEMA/ICC RATED WATER HEATER VENT DETAIL
N.T.S.

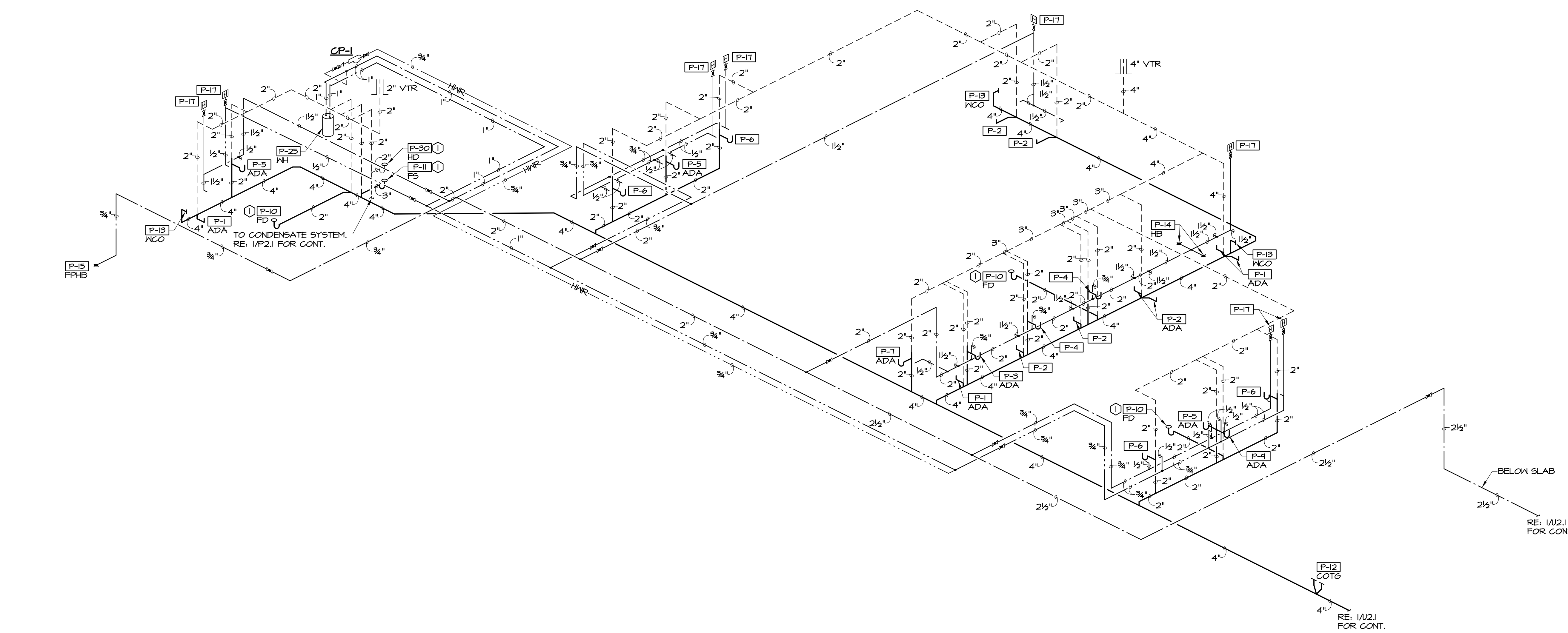


8 ROOF DRAIN - OVERFLOW DRAIN DETAIL
NTS



NOTES:
REFER TO SHEET U2.1 FOR UTILITY SITE PLAN.
REFER TO SHEET P1.1 FOR PLUMBING NOTES & LEGEND.
REFER TO SHEETS P2.1 & P2.1 FOR PLUMBING PLANS.
REFER TO SHEETS P3.1 & P3.2 FOR PLUMBING DETAILS.
REFER TO SHEETS P4.1 THRU P4.3 FOR PLUMBING RISERS.
REFER TO SHEET P5.1 FOR PLUMBING SCHEDULES.
REFER TO SHEET MP2.1 FOR MECHANICAL ROOF PLAN.

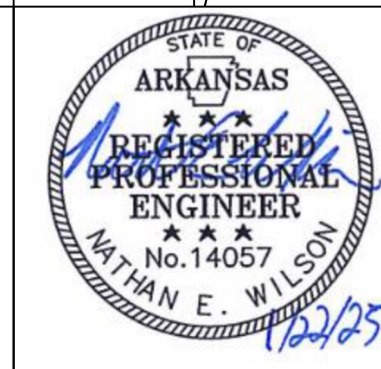
HSAEngineering
479 / 452 / 8922 office
7405 Ellis St.
Fort Smith, AR 72916
HSAConsultants.com



1 RISER I
NTS

NOTES:
REFER TO SHEET U2.1 FOR UTILITY SITE PLAN.
REFER TO SHEET P1.1 FOR PLUMBING NOTES & LEGEND.
REFER TO SHEETS P2.1 & P2.1 FOR PLUMBING PLANS.
REFER TO SHEETS P3.1 & P3.2 FOR PLUMBING DETAILS.
REFER TO SHEETS P4.1 THRU P4.3 FOR PLUMBING RISERS.
REFER TO SHEET P5.1 FOR PLUMBING SCHEDULES.
REFER TO SHEET MP2.1 FOR MECHANICAL ROOF PLAN.

HSA Engineering
479 / 452 / 8922 office
7405 Ellis St.
Fort Smith, AR 72916
HSAConsultants.com



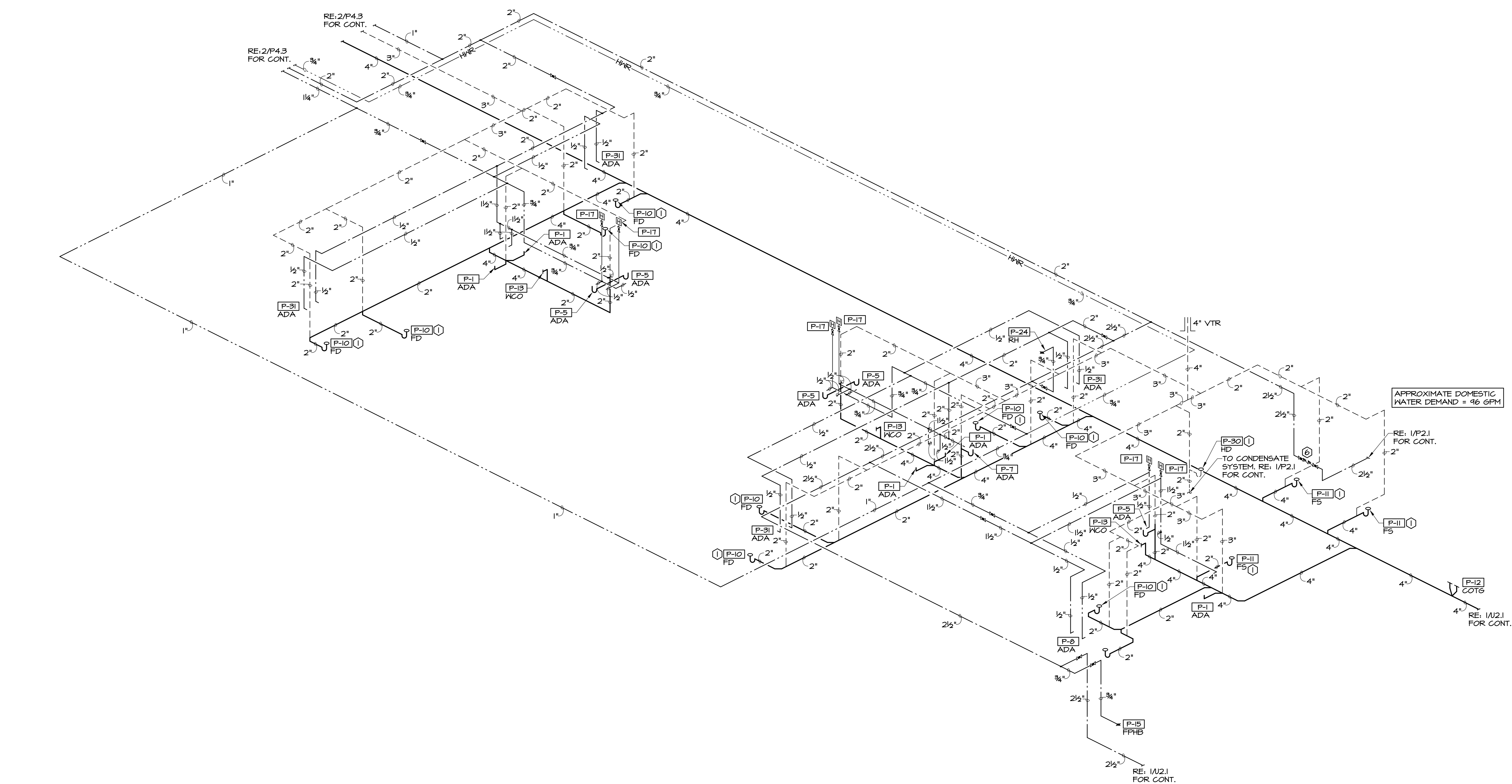
Hight Jackson
ASSOCIATES
5201 W Village Parkway, Suite 300 | Rogers, Arkansas 72758 | (479) 464-4985 | www.hjarch.com

A NEW FACILITY FOR
Thaden Competition Gym
911 S MAIN ST., Bentonville, AR 72712

DRAWN BY:
KPH
CHECKED BY:
NEW
ISSUE DATE:
1/22/2025

PROJECT NO.
2335.3
REVISION DATES
01/24/2025

PLUMBING RISERS
SHEET
P4.2
COPYRIGHT 2025
THESE DRAWINGS AND SPECIFICATIONS ARE
THE EXCLUSIVE PROPERTY OF
HIGHT JACKSON ASSOCIATES P.A.
USE OR REPRODUCTION IS PROHIBITED
WITHOUT WRITTEN CONSENT.

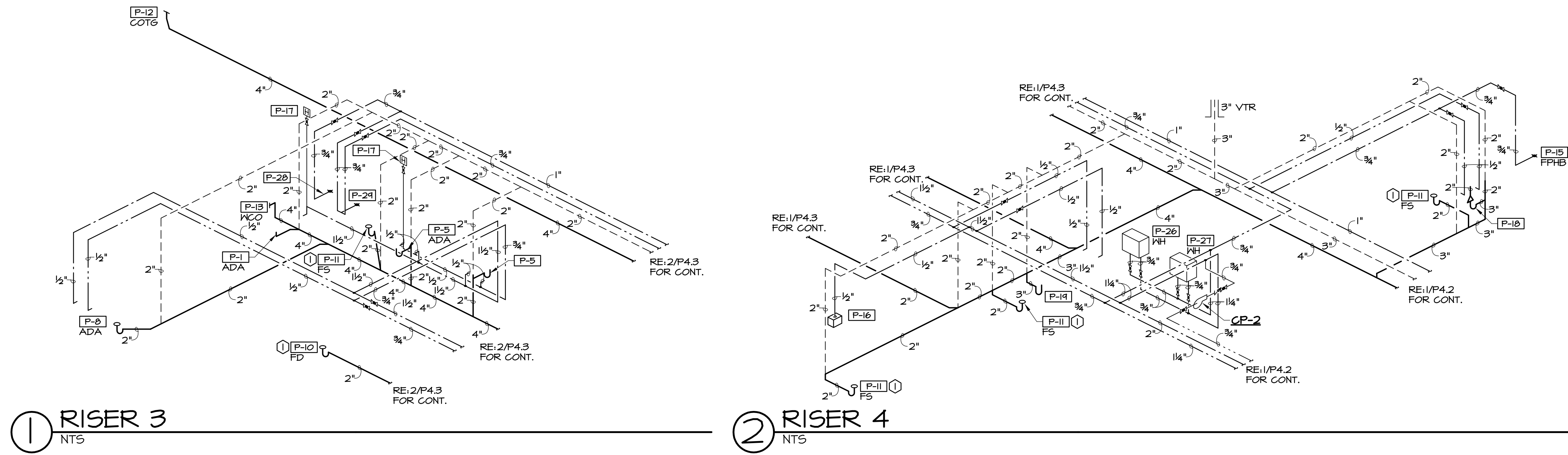


1 RISER 2
NTS

NOTES:
REFER TO SHEET U2.1 FOR UTILITY SITE PLAN.
REFER TO SHEET P1.1 FOR PLUMBING NOTES & LEGEND.
REFER TO SHEETS P2.1 & P2.1 FOR PLUMBING PLANS.
REFER TO SHEETS P3.1 & P3.2 FOR PLUMBING DETAILS.
REFER TO SHEETS P4.1 THRU P4.3 FOR PLUMBING RISERS.
REFER TO SHEET P5.1 FOR PLUMBING SCHEDULES.
REFER TO SHEET MP2.1 FOR MECHANICAL ROOF PLAN.

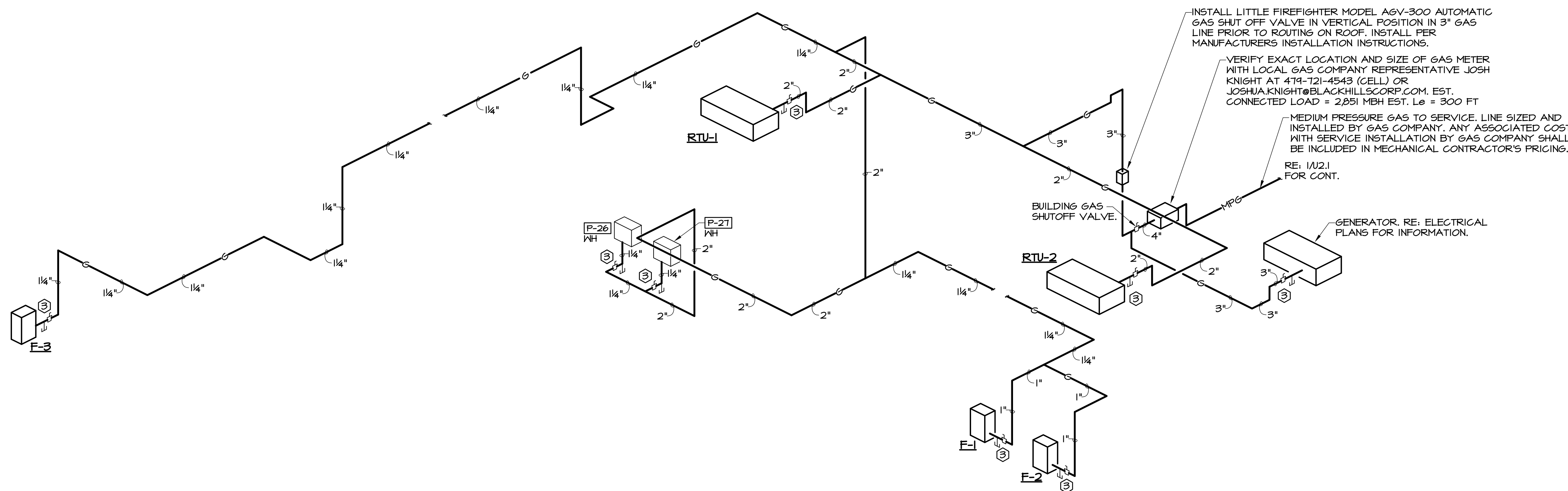
HSA Engineering
479 / 452 / 8922 office
7405 Ellis St.
Fort Smith, AR 72916
HSAConsultants.com

HSA JOB # 24-139



① RISER 3
NTS

② RISER 4
NTS



③ GAS RISER I
NTS

INSTALL LITTLE FIREFIGHTER MODEL AGV-300 AUTOMATIC GAS SHUT OFF VALVE IN VERTICAL POSITION IN 3" GAS LINE PRIOR TO ROUTING ON ROOF. INSTALL PER MANUFACTURERS INSTALLATION INSTRUCTIONS.

VERIFY EXACT LOCATION AND SIZE OF GAS METER WITH LOCAL GAS COMPANY REPRESENTATIVE JOSH KNIGHT AT 479-721-4543 (CELL) OR JOSH.KNIGHT@BLACKHILLSCORP.COM. EST. CONNECTED LOAD = 2,851 MBH EST. L_g = 300 FT

MEDIUM PRESSURE GAS TO SERVICE LINE SIZED AND INSTALLED BY GAS COMPANY. ANY ASSOCIATED COST WITH SERVICE INSTALLATION BY GAS COMPANY SHALL BE INCLUDED IN MECHANICAL CONTRACTOR'S PRICING.

RE: 1/2.1 FOR CONT.

GENERATOR. RE: ELECTRICAL PLANS FOR INFORMATION.

NOTES:
REFER TO SHEET U2.1 FOR UTILITY SITE PLAN.
REFER TO SHEET P1.1 FOR PLUMBING NOTES & LEGEND.
REFER TO SHEETS P2.1 & P2.1 FOR PLUMBING PLANS.
REFER TO SHEETS P3.1 & P3.2 FOR PLUMBING DETAILS.
REFER TO SHEETS P4.1 THRU P4.3 FOR PLUMBING RISERS.
REFER TO SHEET P5.1 FOR PLUMBING SCHEDULES.
REFER TO SHEET MP2.1 FOR MECHANICAL ROOF PLAN.

HSA Engineering
479 / 452 / 8922 office
7405 Ellis St.
Fort Smith, AR 72916
HSAConsultants.com



Hight Jackson
ASSOCIATES
5201 W Village Parkway, Suite 3001, Rogers, Arkansas 72761 (479) 464-4965 | www.hjarch.com

A NEW FACILITY FOR
Thaden Competition Gym
911 S MAIN ST, Bentonville, AR 72712

DRAWN BY:
KPH
CHECK BY:
NEW
ISSUE DATE
1/22/2025

PROJECT NO.
2335.3

REVISION DATES
01/24/2025

PLUMBING SCHEDULES

S H E E T

P5.1

COPYRIGHT 2025
THESE DRAWINGS AND SPECIFICATIONS ARE
THE EXCLUSIVE PROPERTY OF
HIGHT JACKSON ASSOCIATES P.A.
USE OR REPRODUCTION IS PROHIBITED
WITHOUT WRITTEN CONSENT

PLUMBING FIXTURE SCHEDULE

MARK	FIXTURE	MANUFACTURER	MODEL	MOUNT	CONNECTION			REMARKS / ACCESSORIES
					CN	HN	SS	
P-1	ACCESSIBLE WATER CLOSET	AMERICAN STANDARD	3043.102	FLOOR	1-1/2	-	4	WHITE VITREOUS CHINA, LOW CONSUMPTION, ELONGATED BOWL, FLUSH VALVE TOILET. PROVIDE SLOAN MODEL SLOAN #111-DFB FLUSH VALVE, OLSONITE #10 SCC OPEN SEAT AND SLOAN YJ TYPE PIPE SUPPORT. PROVIDE BLOCKING IN WALL AS REQUIRED FOR INSTALLATION OF YJ PIPE SUPPORT. INSTALL 1' FROM TOP OF SEAT TO FLOOR.
P-2	WATER CLOSET	AMERICAN STANDARD	2234.001	FLOOR	1-1/2	-	4	WHITE VITREOUS CHINA, LOW CONSUMPTION, ELONGATED BOWL, FLUSH VALVE TOILET. PROVIDE SLOAN MODEL SLOAN #111-DFB FLUSH VALVE, OLSONITE #10 SCC OPEN SEAT AND SLOAN YJ TYPE PIPE SUPPORT. PROVIDE BLOCKING IN WALL AS REQUIRED FOR INSTALLATION OF YJ PIPE SUPPORT.
P-3	ACCESSIBLE URINAL	AMERICAN STANDARD	6550.001	WALL	3/4	-	2	WHITE VITREOUS CHINA, LOW CONSUMPTION URINAL. PROVIDE SLOAN MODEL SLOAN #106-DFB FLUSH VALVE, MADE #400 WALL CARRIER AND SLOAN YJ PIPE SUPPORT. PROVIDE BLOCKING IN WALL AS REQUIRED FOR INSTALLATION OF YJ PIPE SUPPORT. INSTALL 17 IN. A.F.F. TO TOP OF LIP.
P-4	URINAL	AMERICAN STANDARD	6550.001	WALL	3/4	-	2	WHITE VITREOUS CHINA, LOW CONSUMPTION URINAL. PROVIDE SLOAN MODEL SLOAN #106-DFB FLUSH VALVE, MADE #400 WALL CARRIER AND SLOAN YJ PIPE SUPPORT. PROVIDE BLOCKING IN WALL AS REQUIRED FOR INSTALLATION OF YJ PIPE SUPPORT. INSTALL 24 IN. A.F.F. TO TOP OF LIP.
P-5	ACCESSIBLE LAVATORY	AMERICAN STANDARD	0355.012	WALL	1/2	1/2	1-1/2	WHITE VITREOUS CHINA LAVATORY WITH FAUCET LEDGE AND BACK SPLASH. PROVIDE SLOAN ETF-600 SENSOR OPERATED FAUCET, GRID DRAIN, MADE #520 WALL CARRIER, HANDLAV MOLDED DRAIN & SUPPLY INSULATION KIT, MOUNT 34 IN. A.F.F. TO TOP OF RIM. PROVIDE HARDWIRED TRANSFORMER. PROVIDE WATTS LFMMV THERMOSTATIC MIXING VALVE. SET WATER TEMPERATURE TO 105 DEGREES F.
P-6	LAVATORY	AMERICAN STANDARD	0355.012	WALL	1/2	1/2	1-1/2	WHITE VITREOUS CHINA LAVATORY WITH FAUCET LEDGE AND BACK SPLASH. PROVIDE SLOAN ETF-600 SENSOR OPERATED FAUCET, GRID DRAIN, MADE #520 WALL CARRIER, HANDLAV MOLDED DRAIN & SUPPLY INSULATION KIT, MOUNT 34 IN. A.F.F. TO TOP OF RIM. PROVIDE HARDWIRED TRANSFORMER. PROVIDE WATTS LFMMV THERMOSTATIC MIXING VALVE. SET WATER TEMPERATURE TO 105 DEGREES F.
P-7	BARRIER FREE HI-LO ELECTRIC WATER COOLER WITH BOTTLE FILLER	ELKAY	LMABFTL8WSLK	WALL	1/2	-	1-1/4	WALL MOUNTED, HI-LO SPLIT LEVEL, BARRIER FREE ELECTRIC WATER COOLER, WITH BOTTLE FILLING UNIT, FILTER, AND VISUAL FILTER MONITOR, 8.0 GPH AT ARI STANDARDS, 115 VOLT, SINGLE PHASE, 310 RATED WATTS, 6.0 FULL LOAD AMPS. ENSURE THAT MECHANICALLY ACTIVATED BUBBLER WILL CONTINUE TO SUPPLY WATER IN THE EVENT OF A POWER FAILURE. COORDINATE LOCATION OF ELECTRICAL OUTLET WITH ELECTRICAL CONT. MOUNT LOW SPOUT 36 IN. A.F.F. TO TOP OF SPOUT. MOUNT HI SPOUT 40 IN. A.F.F. TO TOP OF SPOUT UNLESS NOTED OTHERWISE. MOUNT BOTTLE FILLER OVER LOW SPOUT SIDE. RE: A2.5 FOR SPECIFIC MOUNTING HEIGHTS. BOTTLE FILLER MUST HAVE DRAIN CONNECTION OVERFLOW FROM BOTTLE FILLER TO DRINKING FOUNTAIN, BASIN TYPE IS NOT ACCEPTABLE. PROVIDE WITH QUANTITY SIX (6) MANUFACTURER'S REPLACEMENT FILTERS. MODEL 51300C.
P-8	ACCESSIBLE SHOWER	AQUARIUS	S4136BF OT	WALL	1/2	1/2	2	WHITE PREMOLDED ACRYLIC OPEN TOP ADA COMPLIANT SHOWER. PROVIDE WITH FACTORY INSTALLED STANDARD SYMMONS VALVE PACKAGE WITH PRESSURE BALANCED SINGLE LEVER MIXING VALVE WITH STOP, CHROME PLATED BRASS HAND HELD SHOWER HEAD WITH SWIVEL FITTING AND SLIDE BAR, VACUUM BREAKER AND 60" FLEXIBLE HOSE, AND FOLDING SEAT. REFER TO ARCHITECTURAL PLANS FOR SEAT LOCATION. PROVIDE WITH FACTORY PROVIDED AND FIELD INSTALLED 120 VOLT LIGHT AND CURTAIN ROD WITH HEAVY DUTY WEIGHTED VINYL CURTAIN. MOUNT GRAB BAR AT A MAXIMUM OF 36 IN. A.F.F. MOUNT SHOWER CONTROL VALVES AT A MAXIMUM OF 48 IN. A.F.F. MOUNT FOLDING SEAT A MAXIMUM OF 18 IN. A.F.F. PROVIDE WITH 2 IN. BF THRESHOLD AND RECESSED RECEIVER FLANGE ON SIDES AND TOP.
P-9	ACCESSIBLE STAINLESS STEEL SINK	JUST MFG.	SL-ADA-2125-A	COUNTER	1/2	1/2	1-1/2	ACCESSIBLE SINGLE COMPARTMENT, STAINLESS STEEL SINK (15-3/4 x 21 x 5-1/2 D). PROVIDED BY MECHANICAL CONTRACTOR. PROVIDE JUST J-1174-R GOOSENECK FAUCET WITH WRIST BLADES AND JUST J-35 DRAIN WITH GRUMB CUP STRAINER. CENTER, REAR DRAIN LOCATION. MECHANICAL CONTRACTOR TO PROVIDE ALL MATERIALS REQUIRED TO MAKE FINAL CONNECTIONS INCLUDING TAIL PIECE AND ANGLE STOP VALVES. PROVIDE HANDLAV MOLDED PIPE INSULATION. SINK MUST BE ADA COMPLIANT. MOUNT 34 IN. A.F.F. TO TOP OF RIM. PROVIDE WATTS LFMMV THERMOSTATIC MIXING VALVE. SET WATER TEMPERATURE TO 105 DEGREES F.
P-10	FLOOR DRAIN	MADE	1100	FLOOR	-	-	*	*CAST IRON FLOOR DRAIN, SIZE AS INDICATED ON PLANS OR MATCH INDICATED WASTE LINE. PROVIDE DEEP SEAL TRAP. COORDINATE DRAIN TOP MATERIAL WITH SPECIFIED FLOOR FINISH.
P-11	FLOOR SINK	MADE	9110	FLOOR	-	-	*	*CAST IRON FLOOR SINK WITH NICKEL BRONZE GRATE. SIZE AS INDICATED ON PLANS OR MATCH WASTE LINE SIZE WHEN NOT INDICATED. PROVIDE 3/4 GRATE AND DEEP SEAL TRAP.
P-12	CLEAN OUT TO GRADE	MADE	6000Z	TO GRADE	-	-	-	*SIZE TO MATCH WASTE LINE MAXIMUM TO 4 INCHES. PROVIDE HEAVY DUTY TRACTOR TYPE COVER.
P-13	WALL CLEAN OUT	MADE	8550-R	WALL	-	-	-	*SIZE TO MATCH WASTE LINE, MAXIMUM TO 4 INCHES. PROVIDE MADE 8304 STAINLESS STEEL WALL ACCESS COVER.
P-14	HOSE BIB	WOODFORD	B75	WALL	3/4	-	-	HOSE BIB IN LOCKING BOX. PROVIDE VACUUM BREAKER, BACKFLOW AND AUTOMATIC DRAIN. FIELD VERIFY ROUGH IN DIMENSIONS. INSTALL 18" A.F.F.
P-15	FREEZE PROOF HOSE BIB	WOODFORD	B67	WALL	3/4	-	-	FREEZE PROOF HOSE BIB IN LOCKING BOX. PROVIDE VACUUM BREAKER AND BACKFLOW PREVENTION.
P-16	ICE MAKER WALL BOX	GUY GRAY	BMB75	WALL	1/2	-	-	WALL MOUNTED ICE MAKER HOOK UP WITH ANGLE VALVE.
P-17	WATER HAMMER ARRESTOR	MADE BELLOWS	SHOCKSTOP	-	*	*	-	*SIZE WATER HAMMER ARRESTOR PER MANUFACTURER'S RECOMMENDATIONS. ALL STAINLESS STEEL CONSTRUCTION WITH WELDED NESTED BELLOWS. PROVIDE BALL VALVE FOR SHUT-OFF.
P-18	LAUNDRY WALL BOX	GUY GRAY	BB200TS	WALL	1/2	1/2	2	WASHING MACHINE WALL BOX WITH TOP SUPPLY AND 2 INCH DRAIN. MOUNT BOTTOM OF BOX MINIMUM 36" AFF.
P-19	SERVICE SINK	FIAT	TSB-100	FLOOR	1/2	1/2	3	TERRAZZO 24x24x12 SERVICE SINK. PROVIDE T45 BRASS B-0665-B5TP CHROME PLATED FAUCET WITH INTEGRAL SERVICE STOPS, ETERNA CARTRIDGES WITH SPRING CHECKS, TOP BRACE, AND B-0963 VACUUM BREAKER, FIAT #832-AA HOSE AND BRACKET, 3 IN. GRID DRAIN AND STRAINER, 3 MOP HOLDER, AND TWO STAINLESS STEEL WALL GUARDS. MOUNT MOP HOLDER AT 60 IN. A.F.F.
P-20	ROOF DRAIN	MADE	3000-AE-53	ROOF	-	-	*	*SIZE AS INDICATED ON PLANS. CAST IRON ROOF DRAIN WITH FLASHING RING, FLANGE, GRAVEL STOP, CAST IRON DOME, UNDER DECK CLAMP, ADJUSTABLE EXTENSION AND VANDAL PROOF SCREENS.
P-21	OVERFLOW DRAIN	MADE	3000-AE-53	ROOF	-	-	*	*SIZE AS INDICATED ON PLANS. CAST IRON ROOF DRAIN WITH FLASHING RING, FLANGE, GRAVEL STOP, CAST IRON DOME, UNDER DECK CLAMP, ADJUSTABLE EXTENSION AND VANDAL PROOF SCREENS.
P-22	OVERFLOW NOZZLE	MADE	MADE 3440-166	WALL	-	-	*	*SIZE TO MATCH OVERFLOW DRAIN PIPING. CAST BRONZE DOWNSPOUT NOZZLE WITH INLET AND FLANGE TO SECURE NOZZLE TO WALL. FASTENING HARDWARE TO MATCH NOZZLE. MOUNT 12" A.F.F. PROVIDE WITH BIRD SCREEN WITH MATCHING FINISH.
P-23	DOWNSPOUT BOOT	-	-	-	-	-	*	*PROVIDE PVC BELL REDUCER WITH CAP. SIZE BELL REDUCER AS REQUIRED TO FIT DOWNSPOUT. CUT CAP TO MATCH SIZE OF DOWNSPOUT. REFER TO 12/P3.1 FOR DETAIL.
P-24	ROOF HYDRANT	WOODFORD	SRH-M5	ROOF	3/4	-	*	AUTOMATIC DRAINING, BACKFLOW PROTECTED, FREEZE PROOF ROOF HYDRANT.
P-25	ELECTRIC WATER HEATER	A. O. SMITH	DEL-30	PLATFORM	3/4	3/4	-	ELECTRIC WATER HEATER, 30 GALLON TANK CAPACITY, 208V/3PH, NON-SIMULTANEOUS OPERATION @ 6 KW, 21 GPH RECOVERY AT 80F RISE. PROVIDE WITH MANUFACTURER'S DRAIN KIT, DRAIN PAN, AND SERVICE VALVE KIT. PROVIDE WITH COMMERCIAL WARRANTY. SET WATER TEMPERATURE TO 125 DEGREES F.
P-26	TANKLESS WATER HEATER	TAKAGI	T-H3-DV-N	WALL	1-1/4	1-1/4	-	TANKLESS GAS WATER HEATER, 5.4 GPM AT 70 DEGREE F RISE, 95% EFFICIENT WATER HEATER, 199 MBH INPUT. PROVIDE PVC VENT SYSTEM, DRAIN KIT AND MANUFACTURER'S DRAIN PAN AND SERVICE VALVE KIT. SET WATER TEMPERATURE TO 125 DEGREES F.
P-27	TANKLESS WATER HEATER	TAKAGI	T-H3-DV-N	WALL	1-1/4	1-1/4	-	TANKLESS GAS WATER HEATER, 5.4 GPM AT 70 DEGREE F RISE, 95% EFFICIENT WATER HEATER, 199 MBH INPUT. PROVIDE PVC VENT SYSTEM, DRAIN KIT AND MANUFACTURER'S DRAIN PAN AND SERVICE VALVE KIT. SET WATER TEMPERATURE TO 125 DEGREES F.
P-28	HOSE BIB	WOODFORD	24	WALL	3/4	-	-	HOSE BIB. PROVIDE VACUUM BREAKER, BACKFLOW AND AUTOMATIC DRAIN. FIELD VERIFY ROUGH IN DIMENSIONS. INSTALL 18" A.F.F.
P-29	HYDROTHERAPY THERMOSTATIC MIXING VALVE	LEONARD	LV-356-20-KVA-DT	WALL	3/4	3/4	-	THERMOSTATIC MIXING VALVE RATED AT 25 GPM WITH DIAL THERMOMETER. PROVIDE WITH EXTRA HOSE ATTACHMENT WITH 3' LONG WASH-OUT HOSE WITH ROSE SPRAY & WALL HOOK. PROVIDE INTEGRAL COMBINATION CHECK STOPS WITH WALL SUPPORT, BALL VALVES AND VACUUM BREAKER.
P-30	HUB DRAIN	-	PVC REDUCER	ABOVE FLOOR	-	-	2	PVC REDUCER WITH TRAP. PROVIDE TRAP GUARD PROTECTION. REDUCER SHALL BE WITHIN TWO PIPE SIZES OF CONNECTED SANITARY PIPING.
P-31	ACCESSIBLE SHOWER	BRADLEY	HN200	WALL	1/2	1/2	-	RECESS-MOUNTED STAINLESS STEEL ADA COMPLIANT WALL SHOWER. PROVIDE WITH STANDARD MODEL S15 SHOWERHEAD. PROVIDE WITH HANDHELD SHOWER WITH 60" METAL FLEXIBLE HOSE WITH POST STYLE MOUNTING BRACKET AND IN-LINE BACKFLOW PREVENTER. SOAP DISH SHALL BE RECESSED. CONFIRM VALVE-HANDED SIDE WITH ARCHITECTURAL DRAWINGS. PROVIDE BRADLEY TMV THERMOSTATIC MIXING VALVE, VACUUM BREAKER, AND 2 IN. GRID DRAIN. SET WATER TEMPERATURE TO 105 DEGREES F. FIXTURE MUST BE ADA COMPLIANT. REFER TO ARCHITECTURAL FOR EXACT MOUNTING HEIGHTS.

- NOTES**
1. COORDINATE COUNTER TOP FIXTURE INSTALLATION WITH MILLWORK.
2. INSTALL ACCESSIBLE FLUSH VALVE TO THE ACCESSIBLE SIDE.
3. () DENOTES INDIRECT DRAIN.
4. MECHANICAL CONTRACTOR SHALL PROVIDE APPROVED TRAP GUARDS ON ALL FLOOR SINKS AND FLOOR DRAINS.

CIRCULATING PUMP SCHEDULE

MARK	MFG	MODEL	GPM	HEAD (FT)	VL T / PH / HZ	WATTS	REMARKS / ACCESSORIES
CP-1	BELL & GOSSETT	NBF-36	7.0	20	115 / 1 / 60	270	1, 2, 3, 4
CP-2	BELL & GOSSETT	NBF-36	7.0	20	115 / 1 / 60	270	1, 2, 3, 4

- ACCESSORIES**
1. BRONZE CONSTRUCTION FOR HOT WATER RECIRCULATION.
2. PROVIDE AQUASTAT.
3. PLUMBING CONTRACTOR TO PROVIDE TG-1 AUTOMATIC TIMER.
4. PROVIDE 3 SPEED MOTOR.

- NOTES:**
REFER TO SHEET U2.1 FOR UTILITY SITE PLAN.
REFER TO SHEET P1.1 FOR PLUMBING NOTES & LEGEND.
REFER TO SHEETS P2.1 & P2.1 FOR PLUMBING PLANS.
REFER TO SHEETS P3.1 & P3.2 FOR PLUMBING DETAILS.
REFER TO SHEETS P4.1 THRU P4.3 FOR PLUMBING RISERS.
REFER TO SHEET P5.1 FOR PLUMBING SCHEDULES.
REFER TO SHEET MP2.1 FOR MECHANICAL ROOF PLAN.

HSA HSAEngineering
479 / 452 / 8922 office
7405 Ellis St.
Fort Smith, AR 72916
HSAConsultants.com