

BIM 360//16027 (2017) - Mercy NWA, CMP Hospital Bed Tower/NWA\_S\_IP1\_R17.rvt

5/22/2017 4:29:41 PM

**bates**  
 225 S MERAMEC, SUITE 832T  
 SAINT LOUIS, MISSOURI 63105  
 WWW.BATESARCHITECTS.COM  
 TEL: 314.863.2065

Arkansas Certificate of Authority #C116  
 Copyright 2017 Bates & Associates, Architects  
 Drawing and Specifications as instruments of service are and shall remain the property of the Architect. They are not to be used on other projects or alterations to this project except by agreement in writing and with appropriate compensation to the Architect.  
 Contractor is responsible for confirming and correcting dimensions at all sites. The Architect will not be responsible for construction means, methods, techniques, sequences or procedures, or for safety precautions and programs in connection with the project.

**MERCY LOCATION**  
 MERCY NORTHWEST ARKANSAS  
 2710 RIFE MEDICAL LANE  
 ROGERS, AR 72719  
 PHONE: 479.622.1100

**CONSTRUCTION MANAGER**  
 MCARTHUR BUILDING COMPANIES, INC.  
 181 ROCK HILL ROAD  
 ST. LOUIS, MO 63114  
 PHONE: 314.588.5300

**CIVIL ENGINEERS**  
 CRAFTON TULL  
 801 NORTH 4TH STREET, SUITE 200  
 ROGERS, AR 72719  
 PHONE: 479.622.4800

**STRUCTURAL ENGINEERS**  
 TOTH AND ASSOCIATES  
 630 EAST MEMORIAL SUITE 200  
 SPRINGFIELD, MO 65807  
 PHONE: 417.886.0400  
 AR CO. #018  
 M. E. P. T. P. ENGINEERS

IME  
 288 SPOON ACRES ROAD  
 FAYETTEVILLE, AR 72715  
 PHONE: 479.521.8004

**Professional Engineer**  
 Brian M. Orr - Engineer  
 13335  
 THE SEAL AND SIGNATURE APPLY ONLY TO THE DOCUMENT TO WHICH THEY ARE AFFIXED AND WE EXPRESSLY DISCLAIM ANY RESPONSIBILITY FOR ALL OTHER PLANS, SPECIFICATIONS, ESTIMATES, REPORTS OR OTHER DOCUMENTS OR INSTRUMENTS RELATING TO OR INTENDED TO BE USED FOR ANY PART OR PARTS OF THE PROJECT.

**REVISIONS**

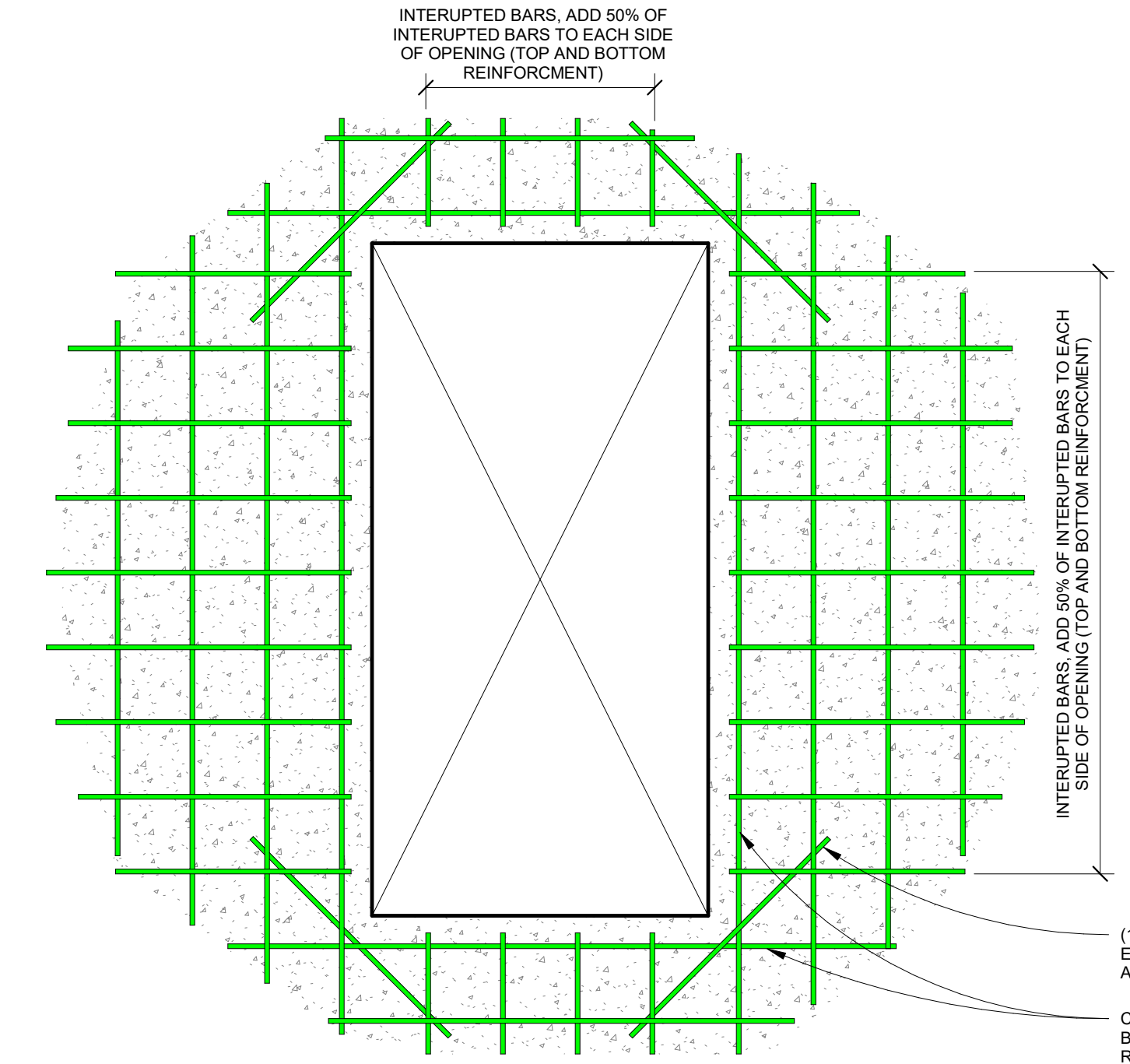
NO.	DATE	DESCRIPTION
B01.08	17.04.18	BULLETIN 01.08
B02.08	17.05.01	BULLETIN 02.08
B03.08	17.05.22	BULLETIN 03.08

PROJECT NUMBER: 2040C-153236-0078  
 ISSUE DATE: 2017.04.03  
 SHEET SCALE: 3/4" = 1'-0"

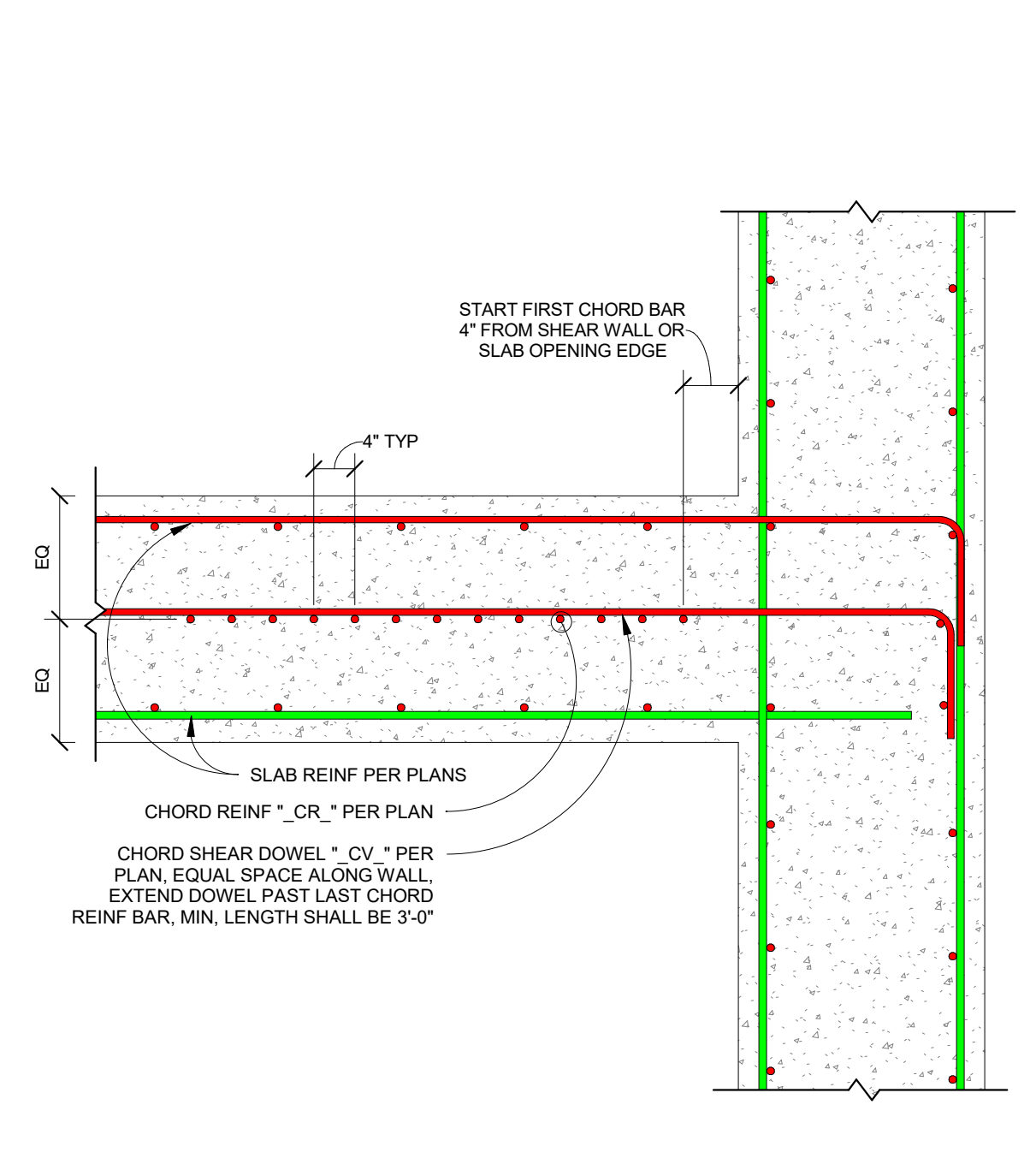
**MERCY HOSPITAL NORTHWEST ARKANSAS**  
 2710 RIFE MEDICAL LANE ROGERS, AR 72718  
**MNWA CMP HOSPITAL BED TOWER**  
**SLAB REINFORCING SCHEDULE**

**ISSUED FOR CONSTRUCTION**

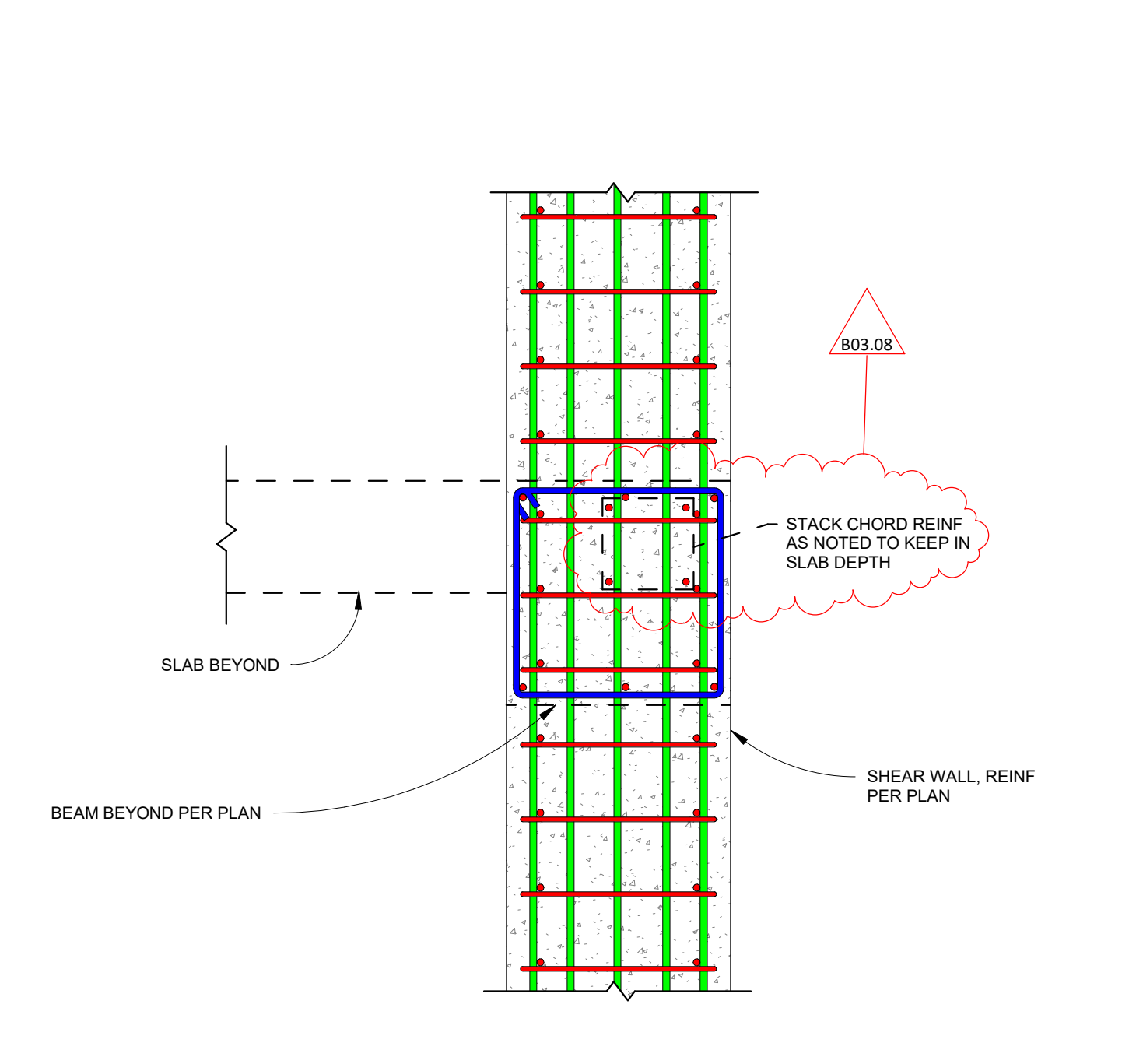
PROJECT ID: BP#8 - Tower  
 SHEET NUMBER: S6.03.08



4 OPENING IN FLOOR SLAB  
 Scale: 3/4" = 1'-0"



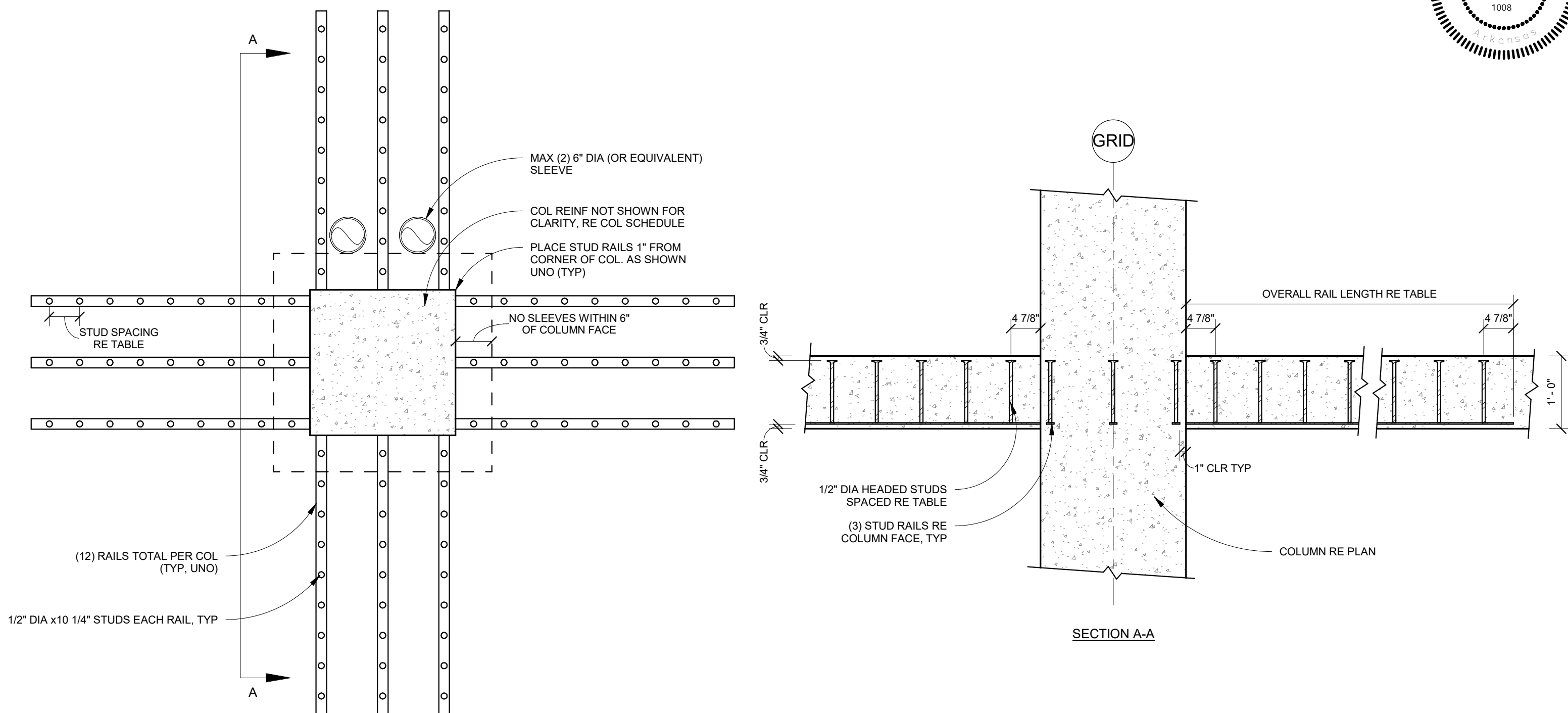
5 CHORD REINFORCING DETAIL  
 Scale: 3/4" = 1'-0"



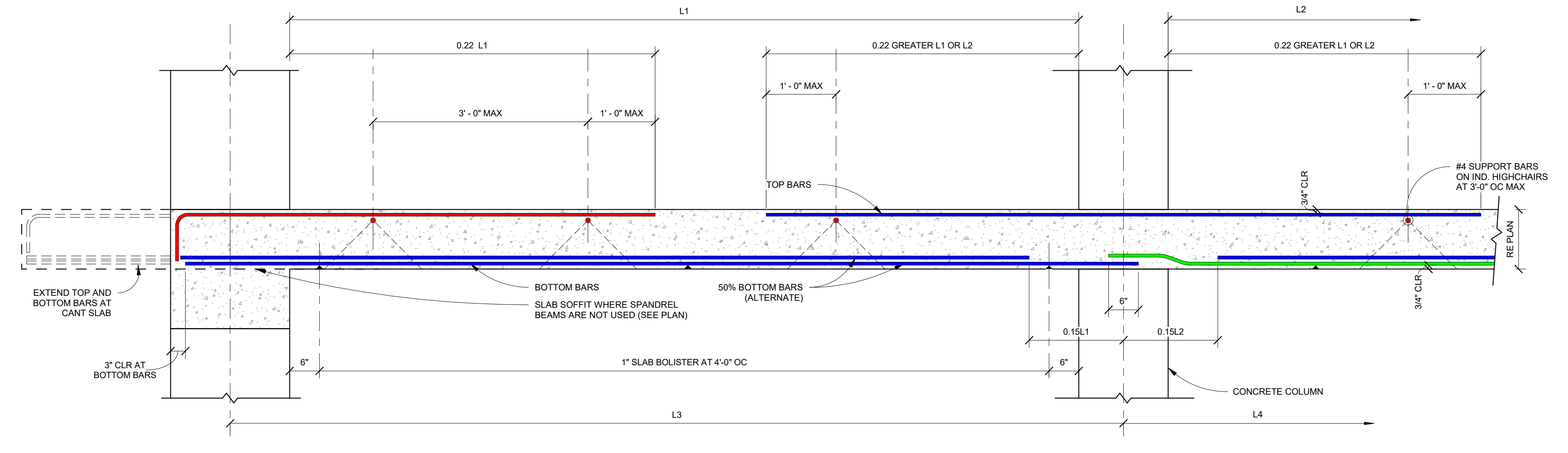
6 CHORD REINFORCING AT GL T12  
 Scale: 3/4" = 1'-0"

COLUMN LOCATION	SECOND FLOOR STUD RAIL SCHEDULE			THIRD FLOOR STUD RAIL SCHEDULE			FOURTH FLOOR STUD RAIL SCHEDULE			FIFTH FLOOR STUD RAIL SCHEDULE			SIXTH FLOOR STUD RAIL SCHEDULE			SEVENTH FLOOR STUD RAIL SCHEDULE			EIGHTH FLOOR STUD RAIL SCHEDULE						
	STUD SPACING	NUMBER OF STUDS	OVERALL RAIL LENGTH	STUD SPACING	NUMBER OF STUDS	OVERALL RAIL LENGTH	STUD SPACING	NUMBER OF STUDS	OVERALL RAIL LENGTH	STUD SPACING	NUMBER OF STUDS	OVERALL RAIL LENGTH	STUD SPACING	NUMBER OF STUDS	OVERALL RAIL LENGTH	STUD SPACING	NUMBER OF STUDS	OVERALL RAIL LENGTH	STUD SPACING	NUMBER OF STUDS	OVERALL RAIL LENGTH				
T12 / T13	7.375"	3	24.5"	7.375"	3	24.5"	7.375"	3	24.5"	7.375"	3	24.5"	7.375"	3	24.5"	7.375"	3	24.5"	7.375"	3	24.5"	7.375"	3	24.5"	
T12 / T1	7.375"	4	31.875"	7.375"	4	31.875"	7.375"	4	31.875"	7.375"	4	31.875"	7.375"	4	31.875"	7.375"	4	31.875"	7.375"	4	31.875"	7.375"	4	31.875"	
T12 / TK	7.375"	5	39.25"	7.375"	5	39.25"	7.375"	5	39.25"	7.375"	5	39.25"	7.375"	5	39.25"	7.375"	5	39.25"	7.375"	5	39.25"	7.375"	5	39.25"	
T12 / M	7.375"	4	31.875"	7.375"	4	31.875"	7.375"	4	31.875"	7.375"	4	31.875"	7.375"	4	31.875"	7.375"	4	31.875"	7.375"	4	31.875"	7.375"	4	31.875"	
T12 / TN	7.375"	5	39.25"	7.375"	5	39.25"	7.375"	4	31.875"	4.875"	10	53.625"	4.875"	10	53.625"	4.875"	10	53.625"	4.875"	10	53.625"	4.875"	10	53.625"	
T12 / TO	7.375"	5	39.25"	7.375"	5	39.25"	7.375"	4	31.875"	7.375"	4	31.875"	7.375"	4	31.875"	7.375"	4	31.875"	7.375"	4	31.875"	7.375"	4	31.875"	
T13 / TJ	7.375"	3	24.5"	7.375"	3	24.5"	7.375"	3	24.5"	7.375"	3	24.5"	7.375"	3	24.5"	7.375"	3	24.5"	7.375"	3	24.5"	7.375"	3	24.5"	
T13 / TK	7.375"	3	24.5"	7.375"	3	24.5"	7.375"	3	24.5"	7.375"	3	24.5"	7.375"	3	24.5"	7.375"	3	24.5"	7.375"	3	24.5"	7.375"	3	24.5"	
T13 / M	7.375"	3	24.5"	7.375"	3	24.5"	7.375"	3	24.5"	7.375"	3	24.5"	7.375"	3	24.5"	7.375"	3	24.5"	7.375"	3	24.5"	7.375"	3	24.5"	
T13 / TN	7.375"	3	24.5"	7.375"	3	24.5"	7.375"	3	24.5"	6.75"	5	36.75"	7.375"	4	31.875"	7.375"	4	31.875"	7.375"	4	31.875"	7.375"	4	31.875"	
T13 / TO	7.375"	3	24.5"	7.375"	3	24.5"	7.375"	3	24.5"	7.375"	3	24.5"	7.375"	3	24.5"	7.375"	3	24.5"	7.375"	3	24.5"	7.375"	3	24.5"	
T13 / TP	7.375"	3	24.5"	7.375"	3	24.5"	7.375"	3	24.5"	4.875"	9	48.75"	4.875"	9	48.75"	4.875"	9	48.75"	4.875"	9	48.75"	4.25"	11	52.25"	
T13 / TR	7.375"	3	24.5"	7.375"	3	24.5"	7.375"	3	24.5"	7.375"	3	24.5"	7.375"	3	24.5"	7.375"	3	24.5"	7.375"	3	24.5"	7.375"	3	24.5"	
T14 / TK	7.375"	3	24.5"	7.375"	3	24.5"	7.375"	3	24.5"	7.375"	4	31.875"	7.375"	4	31.875"	7.375"	4	31.875"	7.375"	4	31.875"	7.375"	4	31.875"	
T14 / TL	7.375"	3	24.5"	7.375"	3	24.5"	7.375"	4	31.875"	7.375"	4	31.875"	7.375"	4	31.875"	7.375"	4	31.875"	7.375"	4	31.875"	7.375"	4	31.875"	
T14 / M	7.375"	3	24.5"	7.375"	3	24.5"	7.375"	3	24.5"	7.375"	4	31.875"	7.375"	4	31.875"	7.375"	4	31.875"	7.375"	4	31.875"	7.375"	4	31.875"	
T14 / TN	7.375"	3	24.5"	7.375"	3	24.5"	7.375"	5	39.25"	7.375"	4	31.875"	7.375"	4	31.875"	7.375"	4	31.875"	7.375"	4	31.875"	7.375"	4	31.875"	
T14 / TO	7.375"	3	24.5"	7.375"	3	24.5"	7.375"	3	24.5"	7.375"	4	31.875"	7.375"	4	31.875"	7.375"	4	31.875"	7.375"	4	31.875"	7.375"	4	31.875"	
T14 / TP	7.375"	3	24.5"	7.375"	3	24.5"	7.375"	3	24.5"	7.375"	4	31.875"	7.375"	4	31.875"	7.375"	4	31.875"	7.375"	4	31.875"	7.375"	4	31.875"	
T14 / TR	7.375"	3	24.5"	7.375"	3	24.5"	7.375"	3	24.5"	7.375"	4	31.875"	7.375"	4	31.875"	7.375"	4	31.875"	7.375"	4	31.875"	7.375"	4	31.875"	
T14 / TS	7.375"	3	24.5"	7.375"	3	24.5"	7.375"	6.75"	5	36.75"	7.375"	4	31.875"	7.375"	4	31.875"	7.375"	4	31.875"	7.375"	4	31.875"	7.375"	4	31.875"

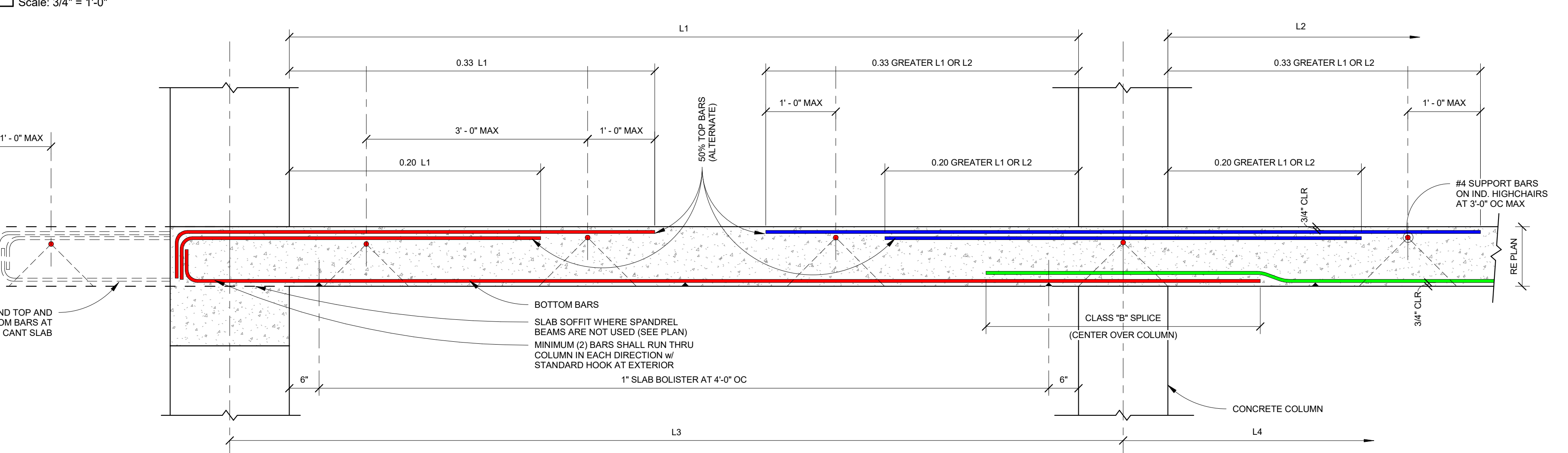
NOTES:  
 1. RAILS TO BE MANUFACTURED BY DECON, INC. OF PALM HARBOR, FL OR APPROVED EQUAL.  
 2. INDIVIDUAL STUD DIMENSIONS TO BE 1/2" x 1 1/4". RAILS TO BE 1/4" x 1 1/4" STEEL (50 KSI MATERIAL). OVERALL HEIGHT TO BE 1 1/2" TALL.  
 3. PLACE THREE (3) STUD RAILS PER COLUMN FACE...  
 4. STUD CONNECTION TO RAIL TO BE WELDED PER AWS STANDARDS USING SEMI-AUTOMATIC ARC STUD WELD METHOD DEVELOPED BY DECON, INC. OR APPROVED EQUAL.



3 TYPICAL STUD RAIL LAYOUTS AND SECTION  
 Scale: 3/4" = 1'-0"



2 TYPICAL SLAB MIDDLE STRIP REINFORCING  
 Scale: 3/4" = 1'-0"



1 TYPICAL SLAB COLUMN STRIP REINFORCING  
 Scale: 3/4" = 1'-0"

TWO-WAY SLAB REINFORCING SCHEDULE			
SEQ.	MARK	REINFORCING	NOTES
C1	6-#6		
C3	12-#6		
C5	13-#6		
C7	15-#6		
C9	16-#6		
C11	8-#6		
C13	18-#6		
C15	14-#6		
C17	10-#6		
C19	11-#6		
C21	9-#6		
C23	20-#6		
M1	12-#6		
M3	14-#6		
M5	16-#6		
M7	8-#6		
M9	10-#6		
M11	11-#6		
M13	13-#6		
M15	15-#6		
M17	17-#6		
T2	6-#6		
T4	8-#6		
T6	8-#6		
T8	9-#6		
T10	11-#6		
T12	14-#6		
T14	10-#6		
T16	13-#6		
T18	7-#6		
T19	11-#6		
T20	9-#6		
T21	9-#6		
T22	12-#6		
T23	7-#6		
T24	16-#6		
T26	10-#6		
T27	14-#6		
T29	15-#6		
MT4	13-#6		
MT6	14-#6		
MT8	18-#6		
MT1	10-#6		
MT3	11-#6		
MT5	12-#6		
MT7	13-#6		
MT9	8-#6		
MT11	14-#6		
MT13	17-#6		
MT15	15-#6		

7 6 5 4 3 2 1