

LIGHTING GENERAL NOTES

- BRANCH CIRCUITS ARE INDICATED AS ONE CIRCUIT HOME RUNS WITH INDIVIDUAL NEUTRALS. A MAXIMUM OF THREE CIRCUITS (MAXIMUM OF THREE PHASE CONDUCTORS) MAY BE GROUPED IN A SINGLE CONDUIT. WHERE MULTIPLE CIRCUITS ARE LOCATED IN THE SAME RACEWAY, JUNCTION BOX OR ENCLOSURE, NEUTRALS SHALL BE MARKED OR LABELED TO INDICATE WHICH CIRCUIT THEY ARE ASSOCIATED WITH. SEE SPECIFICATION SECTION "LOW VOLTAGE ELECTRICAL POWER CONDUCTORS AND CABLES" FOR ADDITIONAL INFORMATION.
- A GROUND CONDUCTOR SIZED PER N.E.C. ARTICLE 250 IS REQUIRED IN ALL CONDUITS.
- REFER TO THE ARCHITECTURAL DRAWINGS AND SPECIFICATIONS FOR LOCATIONS OF FIRE RATED WALLS AND CEILINGS AND THE ASSOCIATED U.L. ASSEMBLY NUMBERS.
- FOR ALL PENETRATIONS IN FIRE RATED WALLS AND CEILINGS, PROVIDE AN ASTM E814 COMPLIANT, U.L. LISTED THROUGH PENETRATION FIRE STOPPING SYSTEM THAT IS SPECIFIC TO THE WALL OR CEILING CONSTRUCTION ASSEMBLY. INSTALL SYSTEM IN STRICT COMPLIANCE WITH THE U.L. ASSEMBLY INDICATED IN THE ARCHITECTURAL DRAWINGS AND SPECIFICATIONS.
- ALL PIPING, CONDUIT, AND OUTLET BOXES (ELECTRIC, TELEPHONE, COMPUTER, ETC.) IN FIRE RATED WALLS OR CEILINGS SHALL BE CONSTRUCTED OF NON-COMBUSTIBLE MATERIAL.
- OUTLET BOXES (ELECTRIC, TELEPHONE, COMPUTER, ETC.) ON OPPOSITE SIDES OF FIRE RATED WALLS SHALL BE SEPARATED BY A HORIZONTAL DISTANCE OF 24 INCHES OR PROTECTED BY OTHER MEANS ALLOWED BY THE SPECIFIC U.L. ASSEMBLY.
- REFER TO ARCHITECTURAL DRAWINGS FOR LOCATIONS OF STC RATED WALLS. OUTLET BOXES (ELECTRIC, TELEPHONE, COMPUTER, ETC.) ON OPPOSITE SIDES OF STC RATED WALLS SHALL BE LIMITED TO TWO OUTLET BOXES PER STUD SPACE AND COVERED WITH "PUTTY PAD" TYPE MOLDABLE FIRE BARRIER.
- REFER TO ARCHITECTURAL REFLECTED CEILING PLANS FOR EXACT LIGHT FIXTURE LOCATIONS. VERIFY ALL DISCREPANCIES WITH ARCHITECT PRIOR TO ROUGH-IN.

KEYNOTES

No.	Date	Description

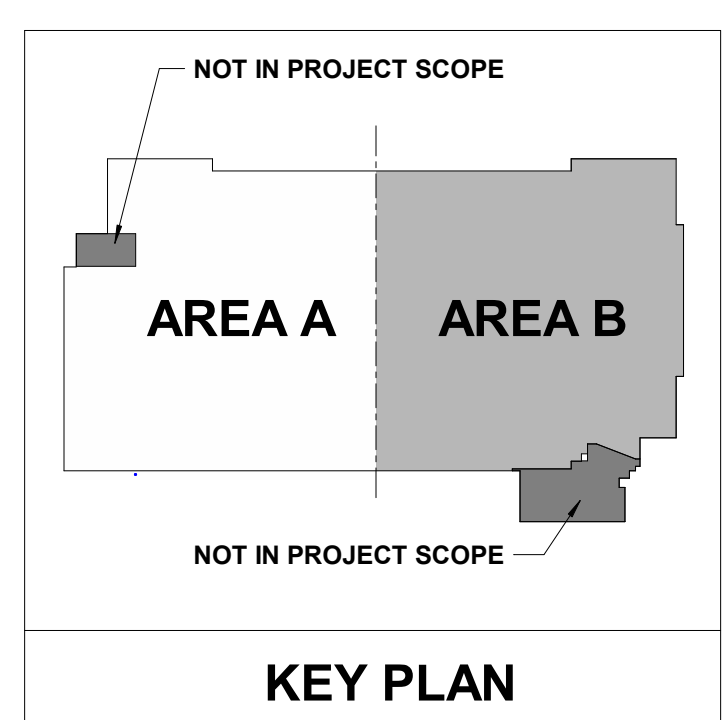
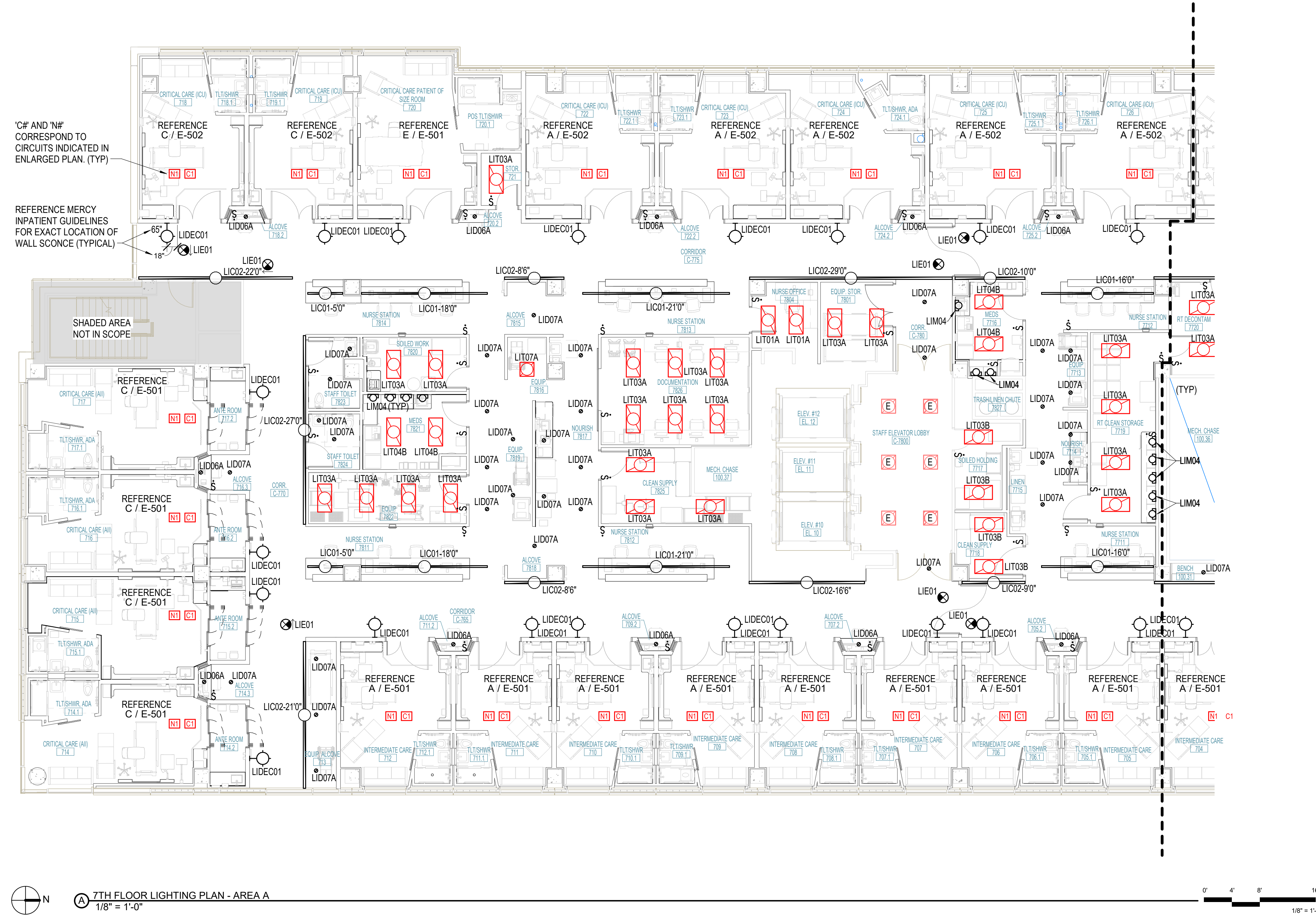
PROGRESS DRAWING
12/17/2024 1:55:16 PM
NOT FOR CONSTRUCTION

Project No.: 2040-821203
Date: 12/11/2024
Scale: As indicated

MERCY NWA HOSPITAL
Building No.: 1388
ROGERS 7TH FLOOR ICU
2710 RIFE MEDICAL LANE, ROGERS, AR 72758
7TH FLOOR LIGHTING PLAN - AREA A



Sheet No.: **E-307A**



PEC
PROFESSIONAL ENGINEERING CONSULTANTS, P.A.
1624 S. LINDA AVE., SUITE 1400, TULSA, OK 74104
918-688-5400 www.pcc.com
PEC PROJECT NUMBER: 240179400 AR.C.O.A.#542.P.E.L.S.EXPIRES: DECEMBER 31, 2024

LIGHTING GENERAL NOTES

- BRANCH CIRCUITS ARE INDICATED AS ONE CIRCUIT HOME RUNS WITH INDIVIDUAL NEUTRALS. A MAXIMUM OF THREE CIRCUITS (MAXIMUM OF THREE PHASE CONDUCTORS) MAY BE GROUPED IN A SINGLE CONDUIT. WHERE MULTIPLE CIRCUITS ARE LOCATED IN THE SAME RACEWAY, JUNCTION BOX OR ENCLOSURE, NEUTRALS SHALL BE MARKED OR LABELED TO INDICATE WHICH CIRCUIT THEY ARE ASSOCIATED WITH. SEE SPECIFICATION SECTION "LOW VOLTAGE ELECTRICAL POWER CONDUCTORS AND CABLES" FOR ADDITIONAL INFORMATION.
- A GROUND CONDUCTOR SIZED PER N.E.C. ARTICLE 250 IS REQUIRED IN ALL CONDUITS.
- REFER TO THE ARCHITECTURAL DRAWINGS AND SPECIFICATIONS FOR LOCATIONS OF FIRE RATED WALLS AND CEILINGS AND THE ASSOCIATED U.L. ASSEMBLY NUMBERS.
- FOR ALL PENETRATIONS IN FIRE RATED WALLS AND CEILINGS, PROVIDE AN ASTM E814 COMPLIANT, U.L. LISTED THROUGH PENETRATION FIRE STOPPING SYSTEM THAT IS SPECIFIC TO THE WALL OR CEILING CONSTRUCTION ASSEMBLY. INSTALL SYSTEM IN STRICT COMPLIANCE WITH THE U.L. ASSEMBLY INDICATED IN THE ARCHITECTURAL DRAWINGS AND SPECIFICATIONS.
- ALL PIPING, CONDUIT, AND OUTLET BOXES (ELECTRIC, TELEPHONE, COMPUTER, ETC.) IN FIRE RATED WALLS OR CEILINGS SHALL BE CONSTRUCTED OF NON-COMBUSTIBLE MATERIAL.
- OUTLET BOXES (ELECTRIC, TELEPHONE, COMPUTER, ETC.) ON OPPOSITE SIDES OF FIRE RATED WALLS SHALL BE SEPARATED BY A HORIZONTAL DISTANCE OF 24 INCHES OR PROTECTED BY OTHER MEANS ALLOWED BY THE SPECIFIC U.L. ASSEMBLY.
- REFER TO ARCHITECTURAL DRAWINGS FOR LOCATIONS OF STC RATED WALLS. OUTLET BOXES (ELECTRIC, TELEPHONE, COMPUTER, ETC.) ON OPPOSITE SIDES OF STC RATED WALLS SHALL BE LIMITED TO TWO OUTLET BOXES PER STUD SPACE AND COVERED WITH "PUTTY PAD" TYPE MOLDABLE FIRE BARRIER.
- REFER TO ARCHITECTURAL REFLECTED CEILING PLANS FOR EXACT LIGHT FIXTURE LOCATIONS. VERIFY ALL DISCREPANCIES WITH ARCHITECT PRIOR TO ROUGH-IN.

KEYNOTES

No.	Date	Description

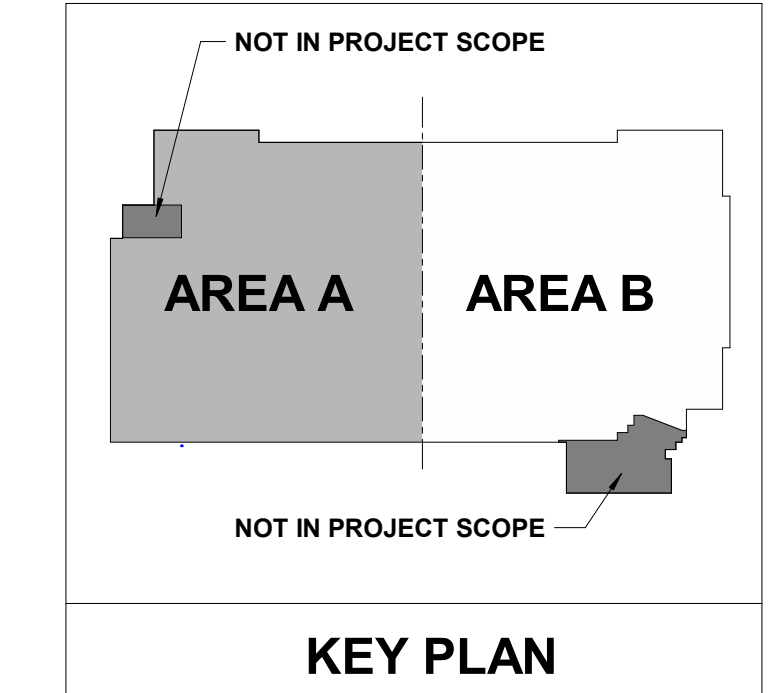
PROGRESS DRAWING
12/17/2024 1:55:18 PM
NOT FOR CONSTRUCTION

Step & Sheet: _____
Date: 12/11/2024
Scale: As indicated
Mercy Project No.: 2040-821203

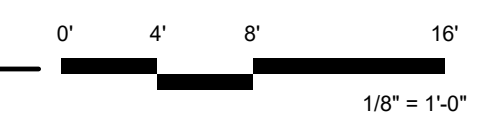
MERCY NWA HOSPITAL
Building No.: 1388
ROGERS 7TH FLOOR ICU
2710 RIFE MEDICAL LANE, ROGERS, AR 72758
Sheet Name: 7TH FLOOR LIGHTING PLAN - AREA B



Sheet No.: **E-307B**



7TH FLOOR LIGHTING PLAN - AREA B
1/8" = 1'-0"



LIGHTING FIXTURE SCHEDULE

- (1)(2)(3)(4) (P.E.C. - WICHITA)
1. GENERAL CONTRACTOR SHALL PROVIDE FIREPROOFING AROUND RECESSED FIXTURES INSTALLED IN FIRE RATED CEILING PER U.L. REQUIREMENTS. ELECTRICAL CONTRACTOR WILL COORDINATE.
 2. MANUFACTURERS LISTED IN THIS SCHEDULE OR APPROVED BY WRITTEN ADDENDUM WILL BE THE ONLY APPROVED MANUFACTURERS TO BID THE LIGHTING FIXTURES FOR THIS PROJECT. CONTRACTORS AND SUPPLIERS USING PRICING FROM MANUFACTURERS NOT LISTED ON SCHEDULE OR BY ADDENDUM DO SO AT THEIR OWN RISK.
 3. LIGHT FIXTURE SELECTIONS ARE BASED ON THE MANUFACTURER IN THE LEFT MOST COLUMN AS LISTED IN THE SCHEDULE. FIXTURES APPROVED AS EQUALS IN THIS SCHEDULE OR BY ADDENDUM SHALL BE EQUAL TO THE UNIT SPECIFIED IN THE LEFT MOST COLUMN, I.E. SPRING LOADED LATCHES, POST PAINTED FINISH, PHOTOMETRICS.
 4. ALL LIGHT FIXTURES SHALL BE SECURED TO THE CEILING FRAMING SYSTEM BY MECHANICAL MEANS (SUCH AS BOLTS, SCREWS, OR RIVETS) OR BY CLIPS IDENTIFIED FOR USE WITH THE TYPE OF CEILING FRAMING MEMBER AND LIGHT FIXTURE.
 5. LIGHT FIXTURES SHALL BE PROVIDED WITH 0-10V DIMMING DRIVERS. DRIVERS SHALL BE CAPABLE OF DIMMING TO A MINIMUM OF 10% TOTAL LIGHT OUTPUT. LED DRIVERS SHALL HAVE A DISCONNECTING MEANS MEETING THE REQUIREMENTS OF NEC SECTION 410.130(G), EXCEPT FOR THOSE INSTALLED IN CORD AND PLUG CONNECTED FIXTURES. WHERE APPLICABLE, WHEN DIMMING SWITCHES ARE NOT PROVIDED AS PART OF THE DESIGN, CONTRACTOR SHALL CAP OFF THE 0-10V DIMMING WIRES FOR FUTURE EXTENSION BY THE OWNER.
 6. PROVIDE ARROWS AND FACES AS INDICATED ON THE DRAWINGS.
 7. TO COMPLY WITH NEC SECTION 410.130(G), ALL EXISTING OR RELOCATED LIGHT FIXTURES WITHOUT A BALLAST OR DRIVER DISCONNECTING MEANS SHALL HAVE A BALLAST OR DRIVER DISCONNECTING MEANS INSTALLED UNDER ANY OF THE FOLLOWING CONDITIONS:
 - a. WHEN AN EXISTING BALLAST OR DRIVER IS REPLACED.
 - b. WHEN AN EXISTING LIGHT FIXTURE IS RELOCATED.
 - c. WHEN AN EXISTING LIGHT FIXTURE IS RECIRCUITED.

MARK	DESCRIPTION	MANUFACTURER 1 CATALOG NUMBER	MANUFACTURER 2 CATALOG NUMBER	LIGHT SOURCE				LENS/LOUVER/FINISH	DIMENSIONS			REF. NOTE	REMARKS
				#	TYPE	WATTS	VOLTS		W	L	D		
E				1	LED								
ED	EXISTING FIXTURE TO BE REMOVED			1	LED	0							
LIC01-50"	RESESSED LINEAR	LEDALITE 3907L935-40-Q-S-2-50"-D-E-1N-W	MARK ARCHITECTURAL SPRLED	1	LED	28	UNV	ACRYLIC	1.0	4.0	0.25	5	1000LM/FT; 3500K; 90CRI. PROVIDE WITH ALL REMOTE DRIVERS. LOCATE DRIVERS IN NEAREST ACCESSIBLE CEILING.
LIC01-140"	RESESSED LINEAR	LEDALITE 3907L935-40-Q-S-2-140"-D-E-1N-W	MARK ARCHITECTURAL SPRLED	1	LED	28	UNV	ACRYLIC	1.0	4.0	0.25	5	1000LM/FT; 3500K; 90CRI. PROVIDE WITH ALL REMOTE DRIVERS. LOCATE DRIVERS IN NEAREST ACCESSIBLE CEILING.
LIC01-160"	RESESSED LINEAR	LEDALITE 3907L935-40-Q-S-2-160"-D-E-1N-W	MARK ARCHITECTURAL SPRLED	1	LED	28	UNV	ACRYLIC	1.0	4.0	0.25	5	1000LM/FT; 3500K; 90CRI. PROVIDE WITH ALL REMOTE DRIVERS. LOCATE DRIVERS IN NEAREST ACCESSIBLE CEILING.
LIC01-180"	RESESSED LINEAR	LEDALITE 3907L935-40-Q-S-2-180"-D-E-1N-W	MARK ARCHITECTURAL SPRLED	1	LED	28	UNV	ACRYLIC	1.0	4.0	0.25	5	1000LM/FT; 3500K; 90CRI. PROVIDE WITH ALL REMOTE DRIVERS. LOCATE DRIVERS IN NEAREST ACCESSIBLE CEILING.
LIC01-210"	RESESSED LINEAR	LEDALITE 3907L935-40-Q-S-2-210"-D-E-1N-W	MARK ARCHITECTURAL SPRLED	1	LED	28	UNV	ACRYLIC	1.0	4.0	0.25	5	1000LM/FT; 3500K; 90CRI. PROVIDE WITH ALL REMOTE DRIVERS. LOCATE DRIVERS IN NEAREST ACCESSIBLE CEILING.
LIC01-280"	RESESSED LINEAR	LEDALITE 3907L935-40-Q-S-2-280"-D-E-1N-W	MARK ARCHITECTURAL SPRLED	1	LED	28	UNV	ACRYLIC	1.0	4.0	0.25	5	1000LM/FT; 3500K; 90CRI. PROVIDE WITH ALL REMOTE DRIVERS. LOCATE DRIVERS IN NEAREST ACCESSIBLE CEILING.
LIC02-40"	CORRIDOR PERIMETER LIGHT	LEDALITE 4908L935-40-Q-S-N-40"-D-E-1N-W	MARK ARCHITECTURAL SPRLED	1	LED	28	UNV	ACRYLIC	1.0	4.0	0.33	5	1000LM/FT; 3500K; 90CRI. PROVIDE WITH ALL REMOTE DRIVERS. LOCATE DRIVERS IN NEAREST ACCESSIBLE CEILING.
LIC02-86"	CORRIDOR PERIMETER LIGHT	LEDALITE 4908L935-40-Q-S-N-86"-D-E-1N-W	MARK ARCHITECTURAL SPRLED	1	LED	28	UNV	ACRYLIC	1.0	4.0	0.33	5	1000LM/FT; 3500K; 90CRI. PROVIDE WITH ALL REMOTE DRIVERS. LOCATE DRIVERS IN NEAREST ACCESSIBLE CEILING.
LIC02-90"	CORRIDOR PERIMETER LIGHT	LEDALITE 4908L935-40-Q-S-N-90"-D-E-1N-W	MARK ARCHITECTURAL SPRLED	1	LED	28	UNV	ACRYLIC	1.0	4.0	0.33	5	1000LM/FT; 3500K; 90CRI. PROVIDE WITH ALL REMOTE DRIVERS. LOCATE DRIVERS IN NEAREST ACCESSIBLE CEILING.
LIC02-100"	CORRIDOR PERIMETER LIGHT	LEDALITE 4908L935-40-Q-S-N-100"-D-E-1N-W	MARK ARCHITECTURAL SPRLED	1	LED	28	UNV	ACRYLIC	1.0	4.0	0.33	5	1000LM/FT; 3500K; 90CRI. PROVIDE WITH ALL REMOTE DRIVERS. LOCATE DRIVERS IN NEAREST ACCESSIBLE CEILING.
LIC02-166"	CORRIDOR PERIMETER LIGHT	LEDALITE 4908L935-40-Q-S-N-166"-D-E-1N-W	MARK ARCHITECTURAL SPRLED	1	LED	28	UNV	ACRYLIC	1.0	4.0	0.33	5	1000LM/FT; 3500K; 90CRI. PROVIDE WITH ALL REMOTE DRIVERS. LOCATE DRIVERS IN NEAREST ACCESSIBLE CEILING.
LIC02-210"	CORRIDOR PERIMETER LIGHT	LEDALITE 4908L935-40-Q-S-N-210"-D-E-1N-W	MARK ARCHITECTURAL SPRLED	1	LED	28	UNV	ACRYLIC	1.0	4.0	0.33	5	1000LM/FT; 3500K; 90CRI. PROVIDE WITH ALL REMOTE DRIVERS. LOCATE DRIVERS IN NEAREST ACCESSIBLE CEILING.
LIC02-220"	CORRIDOR PERIMETER LIGHT	LEDALITE 4908L935-40-Q-S-N-220"-D-E-1N-W	MARK ARCHITECTURAL SPRLED	1	LED	28	UNV	ACRYLIC	1.0	4.0	0.33	5	1000LM/FT; 3500K; 90CRI. PROVIDE WITH ALL REMOTE DRIVERS. LOCATE DRIVERS IN NEAREST ACCESSIBLE CEILING.
LIC02-270"	CORRIDOR PERIMETER LIGHT	LEDALITE 4908L935-40-Q-S-N-270"-D-E-1N-W	MARK ARCHITECTURAL SPRLED	1	LED	28	UNV	ACRYLIC	1.0	4.0	0.33	5	1000LM/FT; 3500K; 90CRI. PROVIDE WITH ALL REMOTE DRIVERS. LOCATE DRIVERS IN NEAREST ACCESSIBLE CEILING.
LIC02-290"	CORRIDOR PERIMETER LIGHT	LEDALITE 4908L935-40-Q-S-N-290"-D-E-1N-W	MARK ARCHITECTURAL SPRLED	1	LED	28	UNV	ACRYLIC	1.0	4.0	0.33	5	1000LM/FT; 3500K; 90CRI. PROVIDE WITH ALL REMOTE DRIVERS. LOCATE DRIVERS IN NEAREST ACCESSIBLE CEILING.
LIC02-316"	CORRIDOR PERIMETER LIGHT	LEDALITE 4908L935-40-Q-S-N-316"-D-E-1N-W	MARK ARCHITECTURAL SPRLED	1	LED	28	UNV	ACRYLIC	1.0	4.0	0.33	5	1000LM/FT; 3500K; 90CRI. PROVIDE WITH ALL REMOTE DRIVERS. LOCATE DRIVERS IN NEAREST ACCESSIBLE CEILING.
LIC02-600"	CORRIDOR PERIMETER LIGHT	LEDALITE 4908L935-40-Q-S-N-600"-D-E-1N-W	MARK ARCHITECTURAL SPRLED	1	LED	28	UNV	ACRYLIC	1.0	4.0	0.33	5	1000LM/FT; 3500K; 90CRI. PROVIDE WITH ALL REMOTE DRIVERS. LOCATE DRIVERS IN NEAREST ACCESSIBLE CEILING.
LIC02-816"	CORRIDOR PERIMETER LIGHT	LEDALITE 4908L935-40-Q-S-N-816"-D-E-1N-W	MARK ARCHITECTURAL SPRLED	1	LED	28	UNV	ACRYLIC	1.0	4.0	0.33	5	1000LM/FT; 3500K; 90CRI. PROVIDE WITH ALL REMOTE DRIVERS. LOCATE DRIVERS IN NEAREST ACCESSIBLE CEILING.
LID06A	6" DOWNLIGHT	CALCULITE 6RN6CL-10-935-W-Z10-U/C6R-DL-CC	LITHONIA LDN6-35/10-L06-AR-LSS-TRW-MVOLT-GZ1-90CRI	1	LED	19	UNV	FINISH-CLEAR; FLANGE-WHITE	1.17	1.32	0.63	5	1500LM; 3500K; 90CRI
LID07A	6" DOWNLIGHT	CALCULITE 6RN6CL-15-935-W-Z10-U/C6R-DL-CC	LITHONIA LDN6-35/15-L06-AR-LSS-TRW-MVOLT-GZ1-90CRI	1	LED	19	UNV	FINISH-CLEAR; FLANGE-WHITE	1.17	1.32	0.63	5	1500LM; 3500K; 90CRI
LID07B	6" DOWNLIGHT	CALCULITE 6RN6CL-15-940-W-Z10-U/C6R-DL-CC	LITHONIA LDN6-40/15-L06-AR-LSS-TRW-MVOLT-GZ1-90CRI	1	LED	19	UNV	FINISH-CLEAR; FLANGE-WHITE	1.17	1.32	0.63	5	1500LM; 4000K; 90CRI
LID10B	6" SEALED DOWNLIGHT	CALCULITE 6RN6CL-15-940-W-Z10-U/C6R-SL-CC	GOETHAM EVO	1	LED	19	UNV	FINISH-CLEAR; FLANGE-WHITE	1.17	1.32	0.63	5	1500LM; 4000K; 90CRI
LIDEC01	WALL SCONCE - CORRIDOR	MODERN FORMS VOGUE WS-3111F-35-BN	NO SUBSTITUTIONS	1	LED	34	UNV	BRUSHED NICKEL	0.25	0.42	0.17		1400LM; 3500K; 90CRI; 277V
LIDEC02	WALL SCONCE - CORRIDOR	MODERN FORMS VOGUE WS-3120F-35K-BN	NO SUBSTITUTIONS	1	LED	16	UNV	BRUSHED NICKEL	0.25	0.42	0.17		2800LM; 3500K; 90CRI; 227V
LIE01	1 FACE/AC EXIT	HEXMODAL HEX-E		1	LED	5	UNV		0.71	1.06	0.17	6	
LIE02	2 FACE/AC EXIT	HEXMODAL HEX-E		1	LED	5	UNV		0.71	1.06	0.17	6	
LIM04	19" UNDER CABINET	DAYBRITE LINCS100E-L19-940-UNV-WHG	JUNO UPLD-14IN-SWWW4-90CRI-WH	1	LED	6	UNV	ACRYLIC	0.38	1.5	0.08	5	400 LUMENS; 90 CRI; 4000K
LIM07	WALL SCONCE - CORRIDOR	CHLORIDE WG2H-2-SWH-PCC	HEALTHCARE LIGHTING HNLS12-SQU-MVOLT-MT-AMB-ZT-MWAM	1	LED	16	UNV	WHITE	0.25	0.42	0.17		AMBER
LIT01A	2X4 LAY-IN	DAYBRITE 2CAXG38LH835-4-DS-UNV-DIM	LITHONIA STAK-2X4-4000LM-80CRI-35K-COL-MIN1-ZT-MVOLT	1	LED	28	UNV	ACRYLIC	2.0	4.0	0.33	5	4000LM; 3500K; 80CRI
LIT03A	2X4 LAY-IN	DAYBRITE 2EVG38L835-4-DS-UNV-DIM	LITHONIA STAK-2X4-4000LM-80CRI-35K-COL-MIN1-ZT-MVOLT	1	LED	28	UNV	ACRYLIC	2.0	4.0	0.33	5	4000LM; 3500K; 80CRI
LIT03B	2X4 LAY-IN	DAYBRITE 2EVG38L840-4-DS-UNV-DIM	LITHONIA STAK-2X4-4000LM-80CRI-40K-COL-MIN1-ZT-MVOLT	1	LED	28	UNV	ACRYLIC	2.0	4.0	0.33	5	4000LM; 4000K; 80CRI
LIT04B	2X4 LAY-IN	DAYBRITE 2EVG48L840-4-DS-UNV-DIM	LITHONIA STAK-2X4-5000LM-80CRI-40K-COL-MIN1-ZT-MVOLT	1	LED	28	UNV	ACRYLIC	2.0	4.0	0.33	5	4800LM; 4000K; 80CRI
LIT06B	2X4 LAY-IN	CERTOLUX MD3G-4103-LED840K	HEALTHCARE LIGHTING HPT624G-277-PAH-LED40	1	LED	28	UNV	ACRYLIC, FINISH-MATTE WHITE	2.0	4.0	0.33	5	4000LM; 3500K; 80CRI
LIT07A	2X2 LAY-IN	DAYBRITE 2CAXG20LH835-2-DS-UNV-DIM	LITHONIA STAK-2X2-2000LM-80CRI-35K-COL-MIN1-ZT-MVOLT	1	LED	24	UNV	ACRYLIC	2.0	2.0	0.33	5	2000LM; 3500K; 80CRI
S1	DIRECT/INDIRECT		SIGNIFY TBD	1	LED	45	UNV	ACRYLIC	0.23	8.0	0.17	5	5000LM; 3500K; 80CRI
S2	DIRECT/INDIRECT		SIGNIFY TBD	1	LED	45	UNV	ACRYLIC	0.23	12.0	0.17	5	5000LM; 3500K; 80CRI

No.	Date	Description

**PROGRESS
DRAWING**
12/17/2024 1:55:19 PM
NOT FOR
CONSTRUCTION

Mercy Project No.: 2040-821203
Date: 12/11/2024
Scale:

MERCY NWA HOSPITAL
Building No.: 1388
ROGERS 7TH FLOOR ICU
2710 RIFE MEDICAL LANE, ROGERS, AR 72758

ELECTRICAL LIGHTING AND CONTROL SCHEDULES

ELECTRICAL GENERAL NOTES

- BRANCH CIRCUITS ARE INDICATED AS ONE CIRCUIT HOME RUNS WITH INDIVIDUAL NEUTRALS. A MAXIMUM OF THREE CIRCUITS (MAXIMUM OF THREE PHASE CONDUCTORS) MAY BE GROUPED IN A SINGLE CONDUIT. WHERE MULTIPLE CIRCUITS ARE LOCATED IN THE SAME RACEWAY, JUNCTION BOX OR ENCLOSURE, NEUTRALS SHALL BE MARKED OR LABELED TO INDICATE WHICH CIRCUIT THEY ARE ASSOCIATED WITH. SEE SPECIFICATION SECTION "LOW VOLTAGE ELECTRICAL POWER CONDUCTORS AND CABLES" FOR ADDITIONAL INFORMATION.
- A GROUND CONDUCTOR SIZED PER N.E.C. ARTICLE 250 IS REQUIRED IN ALL CONDUITS.
- FOR CONNECTION REQUIREMENTS TO MECHANICAL UNITS, SEE MECHANICAL EQUIPMENT CONNECTION SCHEDULE.
- REFER TO THE ARCHITECTURAL DRAWINGS AND SPECIFICATIONS FOR LOCATIONS OF FIRE RATED WALLS AND CEILINGS AND THE ASSOCIATED U.L. ASSEMBLY NUMBERS.
- FOR ALL PENETRATIONS IN FIRE RATED WALLS AND CEILINGS, PROVIDE AN ASTM E814 COMPLIANT, U.L. LISTED THROUGH PENETRATION FIRE STOPPING SYSTEM THAT IS SPECIFIC TO THE WALL OR CEILING CONSTRUCTION ASSEMBLY. INSTALL SYSTEM IN STRICT COMPLIANCE WITH THE U.L. ASSEMBLY INDICATED IN THE ARCHITECTURAL DRAWINGS AND SPECIFICATIONS.
- ALL PIPING, CONDUIT, AND OUTLET BOXES (ELECTRIC, TELEPHONE, COMPUTER, ETC.) IN FIRE RATED WALLS OR CEILINGS SHALL BE CONSTRUCTED OF NON-COMBUSTIBLE MATERIAL.
- OUTLET BOXES (ELECTRIC, TELEPHONE, COMPUTER, ETC.) ON OPPOSITE SIDES OF FIRE RATED WALLS SHALL BE SEPARATED BY A HORIZONTAL DISTANCE OF 24 INCHES OR PROTECTED BY OTHER MEANS ALLOWED BY THE SPECIFIC U.L. ASSEMBLY.
- REFER TO ARCHITECTURAL DRAWINGS FOR LOCATIONS OF STC RATED WALLS. OUTLET BOXES (ELECTRIC, TELEPHONE, COMPUTER, ETC.) ON OPPOSITE SIDES OF STC RATED WALLS SHALL BE LIMITED TO TWO OUTLET BOXES PER STUD SPACE AND COVERED WITH "PUTTY PAD" TYPE MOLDABLE FIRE BARRIER.
- FIELD VERIFY THE EXACT LOCATION OF ALL FLOOR BOXES AND POKE THROUGHs WITH ARCHITECT PRIOR TO ROUGH-IN.
- PROVIDE ALL ISOLATED GROUND CIRCUITS WITH INDIVIDUAL NEUTRAL CONDUCTORS AND EQUIPMENT GROUND CONDUCTORS.
- THE FIRE ALARM SYSTEM SHOWN HAS BEEN DESIGNED PER THE REQUIREMENTS OF NFPA 72. DEVICES SHOWN INDICATE THE DESIGN INTENT AND SHALL BE THE MINIMUM PROVIDED. SYSTEM SUPPLIER SHALL PROVIDE ANY ADDITIONAL CODE REQUIRED DEVICES OR DEVICES REQUIRED BY THE AUTHORITY HAVING JURISDICTION.
- REFER TO ARCHITECTURAL REFLECTED CEILING PLANS FOR EXACT LIGHT FIXTURE LOCATIONS. VERIFY ALL DISCREPANCIES WITH ARCHITECT PRIOR TO ROUGH-IN.

- # KEYNOTES**
- P8 RECEPTACLE TO BE LABELED 'DIALYSIS' AND MOUNTED AT 42".
 - P9 RECEPTACLE TO BE LABELED 'WATER TREAT' AND MOUNTED AT 42".
 - P10 REFERENCE ARCHITECTURAL DRAWINGS FOR EXACT PLACEMENT OF HEADWALL DEVICES.

No.	Date	Description

PROGRESS DRAWING
12/17/2024 1:55:20 PM
NOT FOR CONSTRUCTION

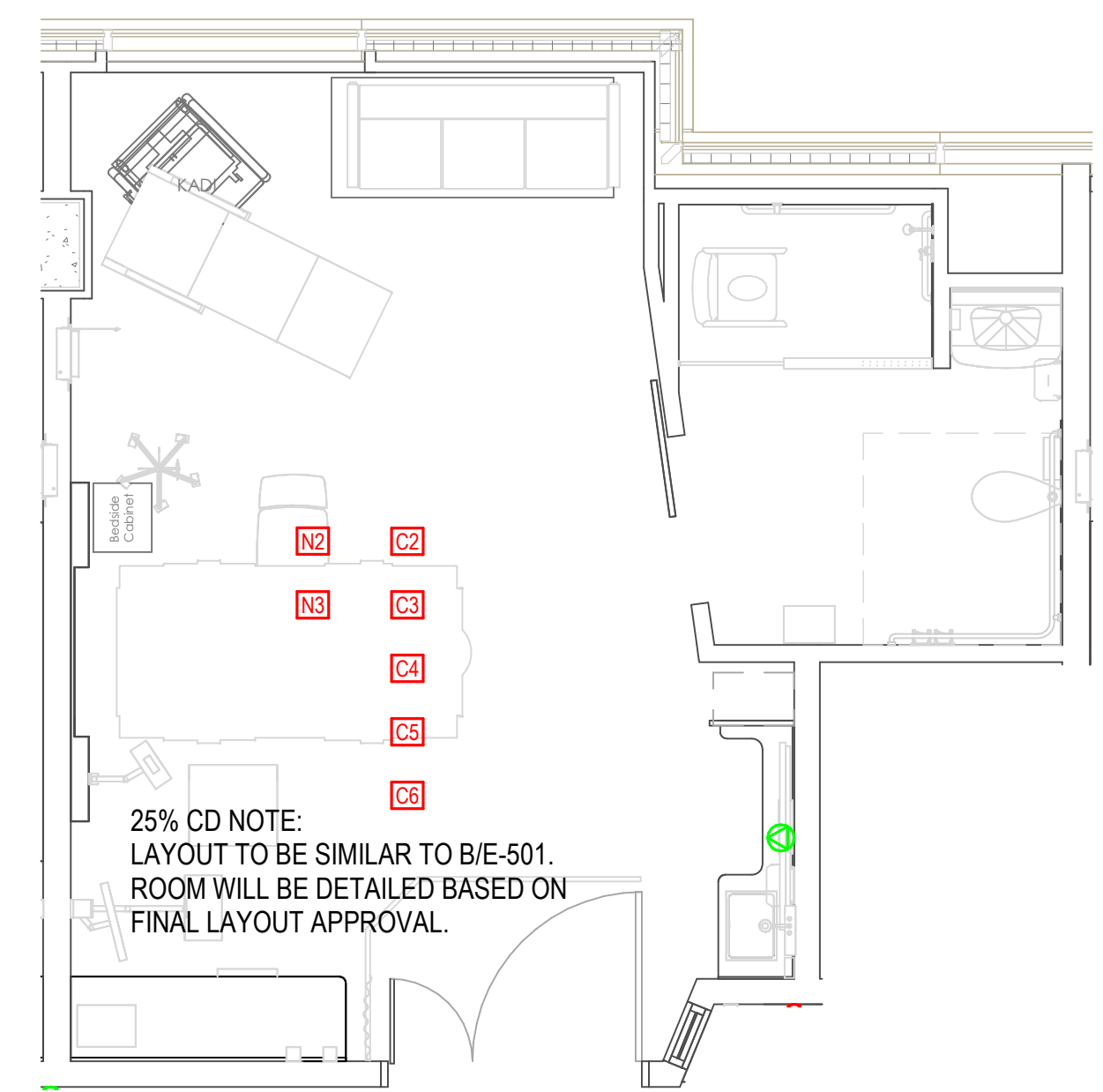
Step & Rev: Date: 12/11/2024
As indicated
Mercy Project No.: 2040-821203

MERCY NWA HOSPITAL
Building No.: 1388
ROGERS 7TH FLOOR ICU
2710 RIFE MEDICAL LANE, ROGERS, AR 72758
Sheet Name: **ELECTRICAL ENLARGED PLANS**

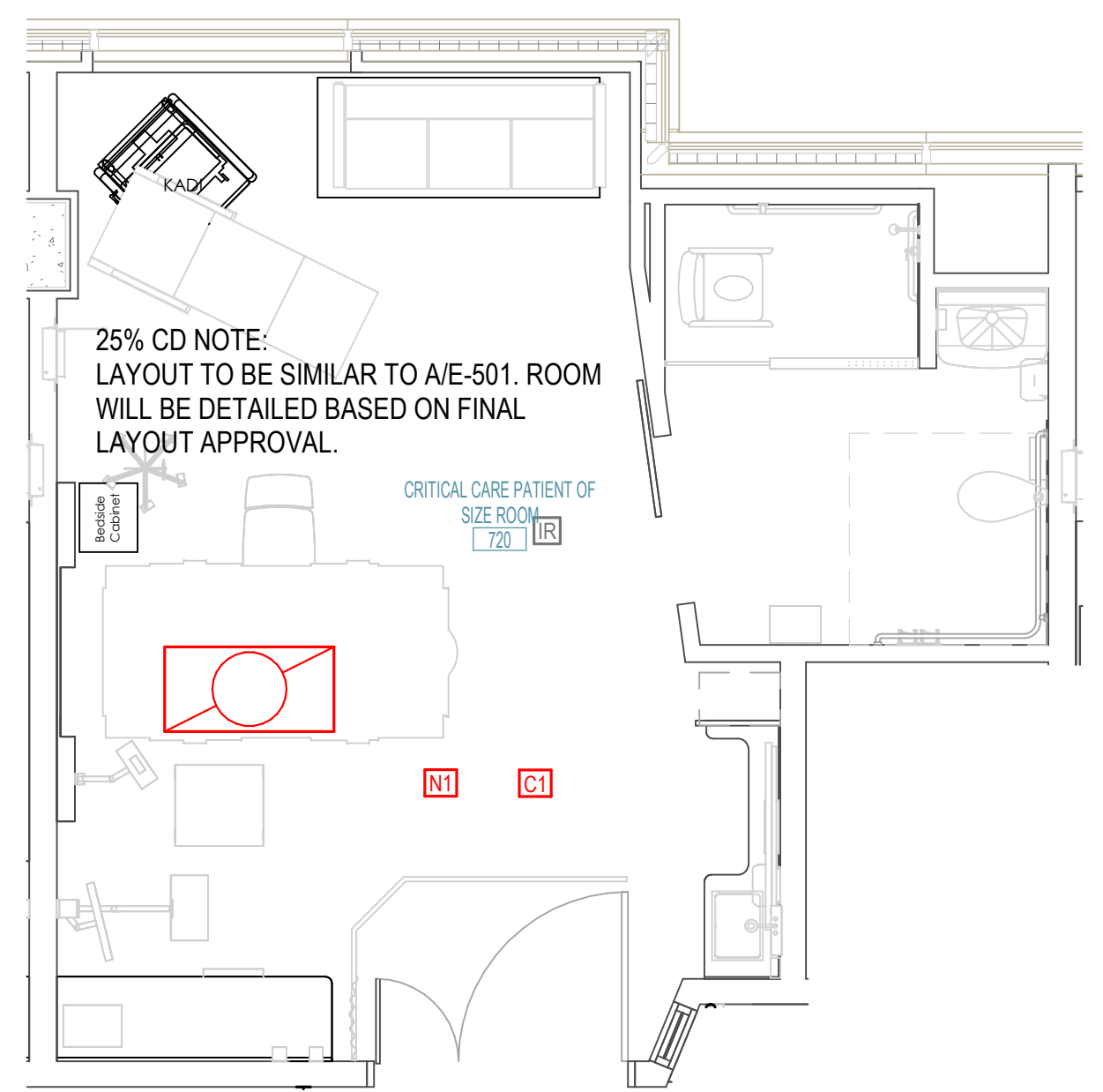


Sheet No:
E-501

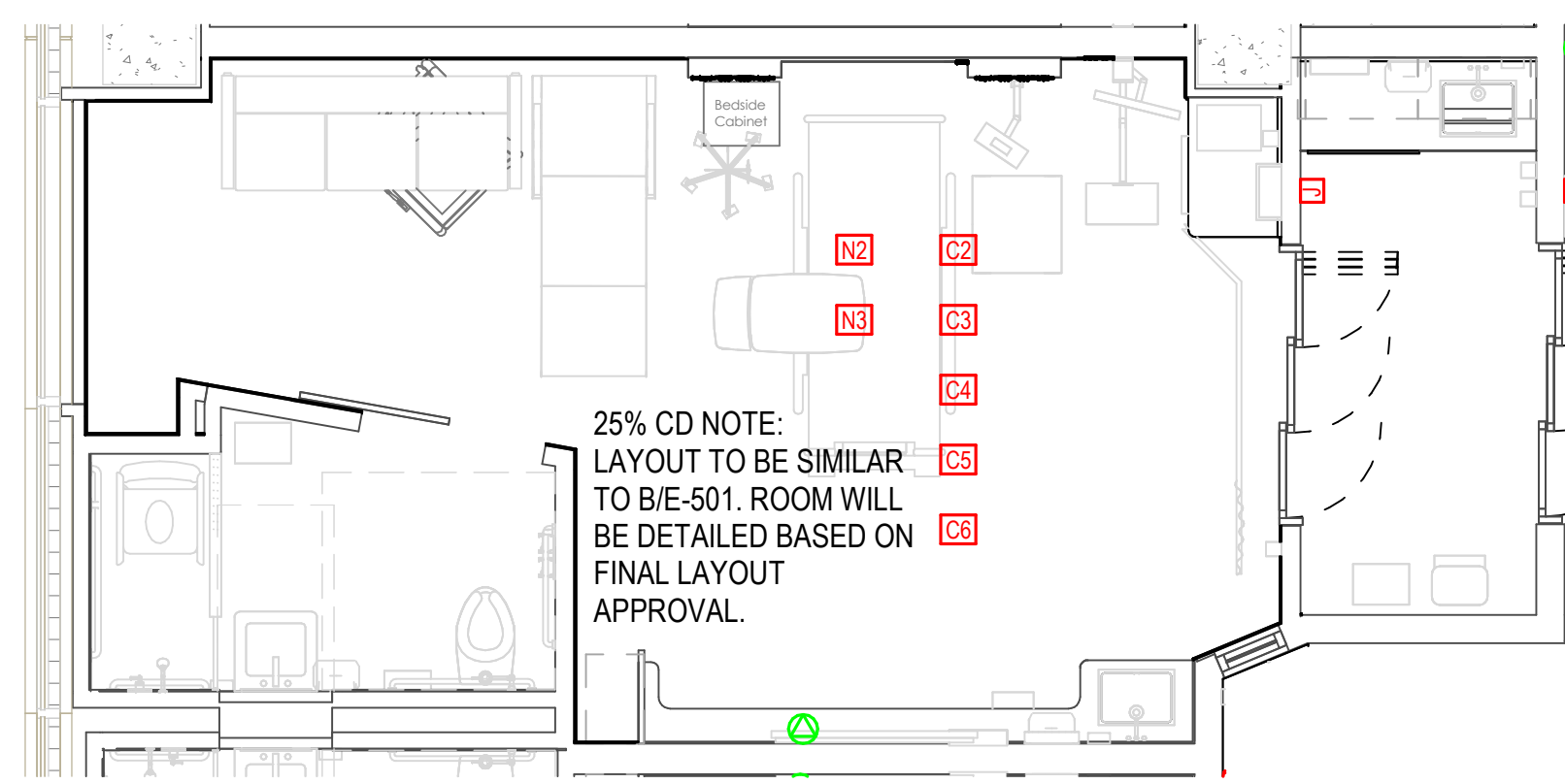
PEC
PROFESSIONAL ENGINEERING CONSULTANTS P.A.
1624 S. UTICHAVE, SUITE 1400, TULSA, OK 74104
918-688-5400 www.pec.com
PEC PROJECT NUMBER: 240179J00 AR.C.O.A.#542 PEELS EXPIRES: DECEMBER 31, 2024



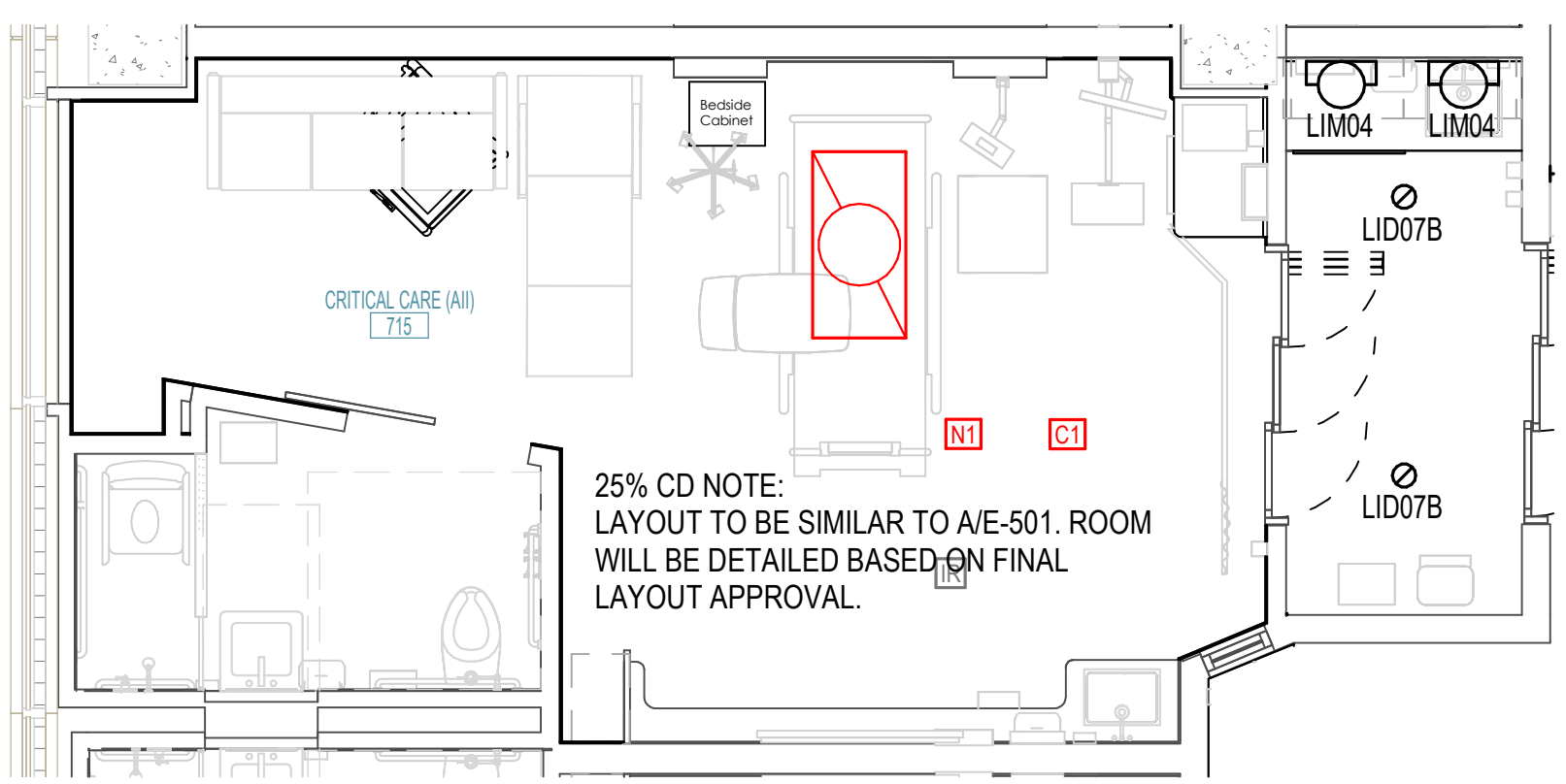
F ENLARGED CRITICAL CARE PATIENT OF SIZE - POWER
0' 2' 4' 6' 1/4" = 1'-0"



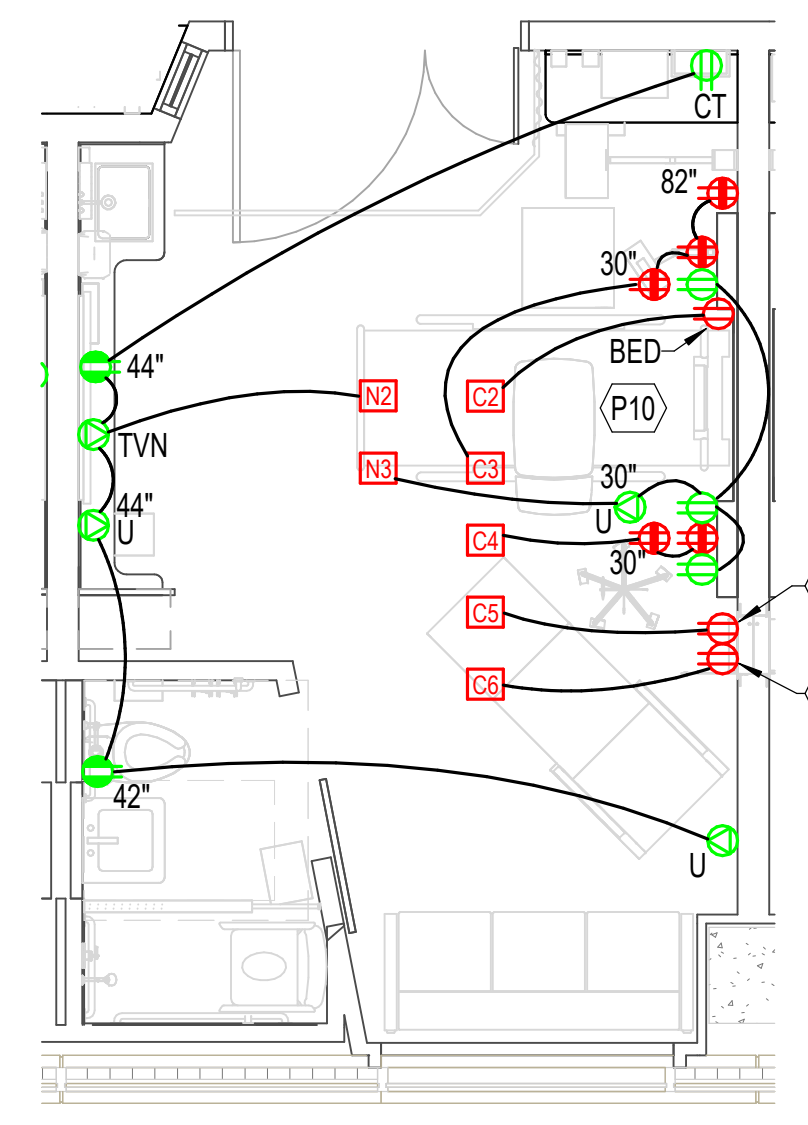
E ENLARGED CRITICAL CARE PATIENT OF SIZE - LIGHTING
0' 2' 4' 6' 1/4" = 1'-0"



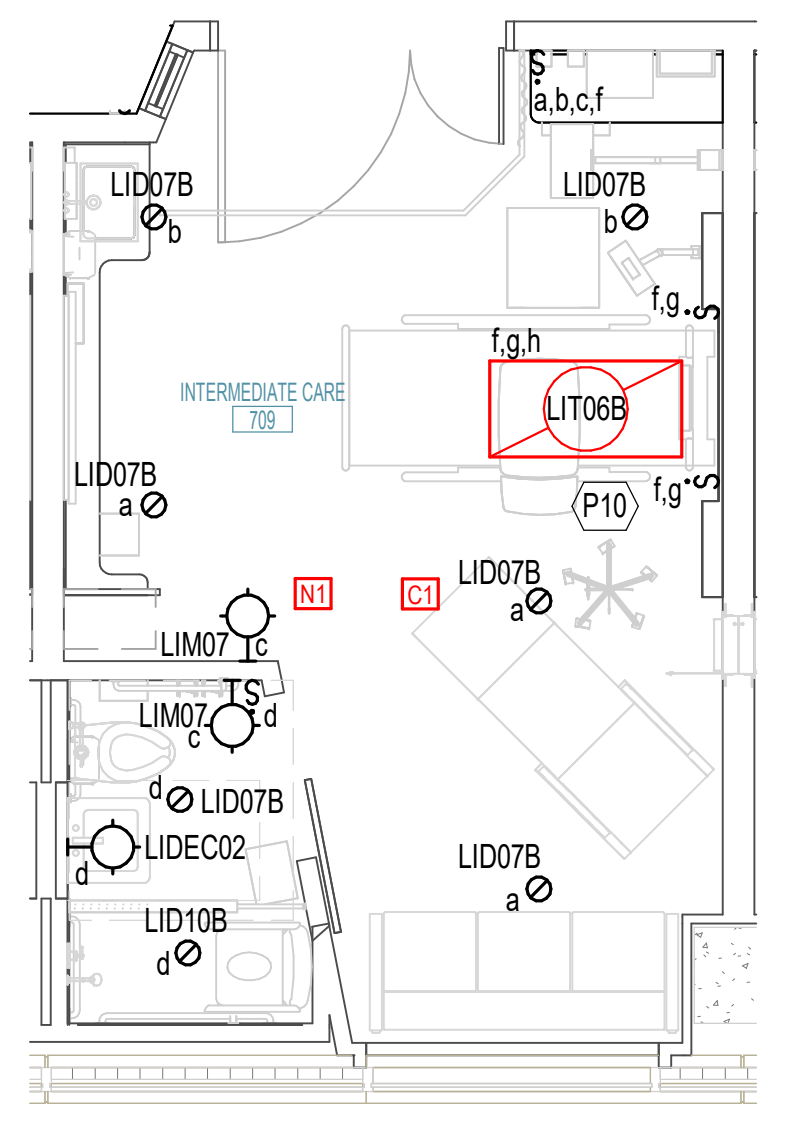
D TYPICAL ENLARGED CRITICAL CARE (AII) - POWER
0' 2' 4' 6' 1/4" = 1'-0"



C TYPICAL ENLARGED CRITICAL CARE (AII) - LIGHTING
0' 2' 4' 6' 1/4" = 1'-0"



B TYPICAL ENLARGED INTERMEDIATE CARE - POWER
0' 2' 4' 6' 1/4" = 1'-0"



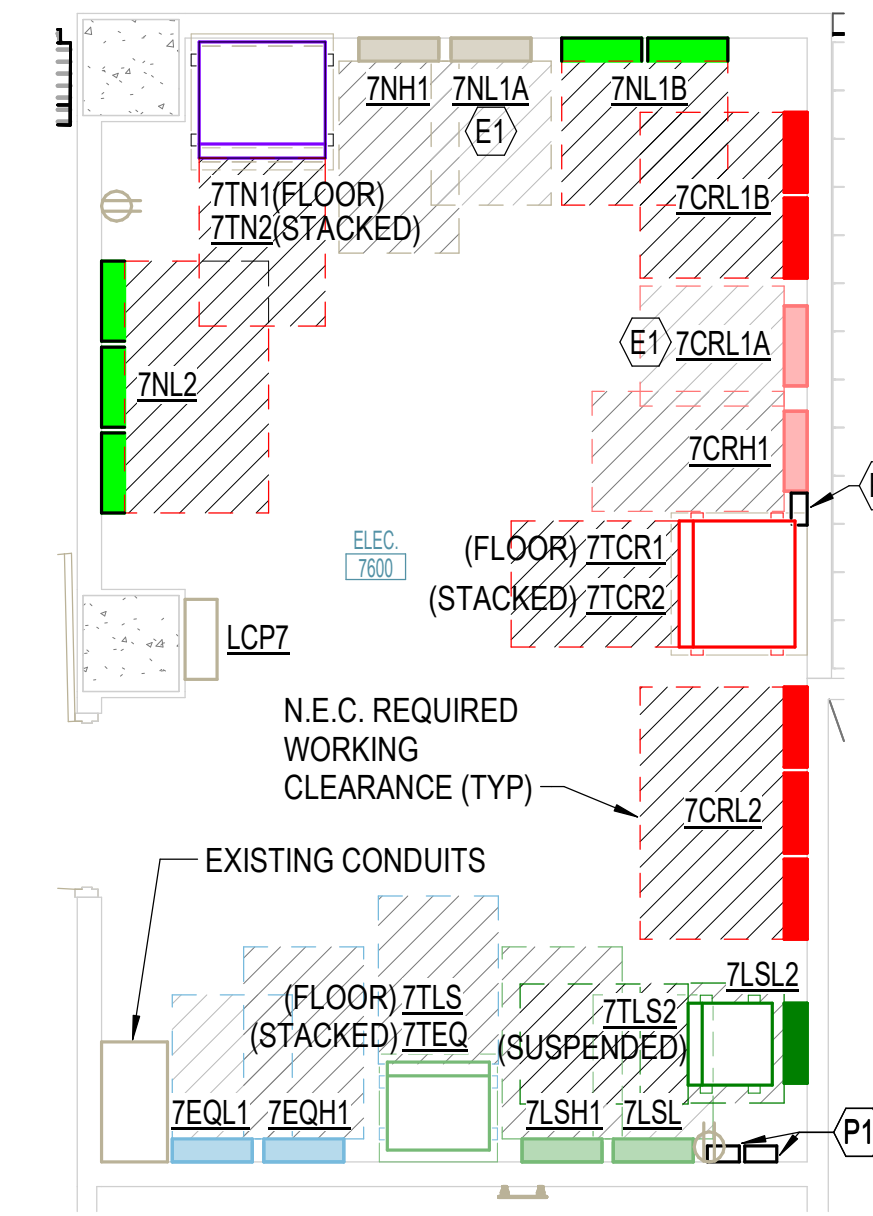
A TYPICAL ENLARGED INTERMEDIATE CARE - LIGHTING
0' 2' 4' 6' 1/4" = 1'-0"

ELECTRICAL GENERAL NOTES

- BRANCH CIRCUITS ARE INDICATED AS ONE CIRCUIT HOME RUNS WITH INDIVIDUAL NEUTRALS. A MAXIMUM OF THREE CIRCUITS (MAXIMUM OF THREE PHASE CONDUCTORS) MAY BE GROUPED IN A SINGLE CONDUIT. WHERE MULTIPLE CIRCUITS ARE LOCATED IN THE SAME RACEWAY, JUNCTION BOX OR ENCLOSURE, NEUTRALS SHALL BE MARKED OR LABELED TO INDICATE WHICH CIRCUIT THEY ARE ASSOCIATED WITH. SEE SPECIFICATION SECTION "LOW VOLTAGE ELECTRICAL POWER CONDUCTORS AND CABLES" FOR ADDITIONAL INFORMATION.
- A GROUND CONDUCTOR SIZED PER N.E.C. ARTICLE 250 IS REQUIRED IN ALL CONDUITS.
- FOR CONNECTION REQUIREMENTS TO MECHANICAL UNITS, SEE MECHANICAL EQUIPMENT CONNECTION SCHEDULE.
- REFER TO THE ARCHITECTURAL DRAWINGS AND SPECIFICATIONS FOR LOCATIONS OF FIRE RATED WALLS AND CEILINGS AND THE ASSOCIATED U.L. ASSEMBLY NUMBERS.
- FOR ALL PENETRATIONS IN FIRE RATED WALLS AND CEILINGS, PROVIDE AN ASTM E814 COMPLIANT, U.L. LISTED THROUGH PENETRATION FIRE STOPPING SYSTEM THAT IS SPECIFIC TO THE WALL OR CEILING CONSTRUCTION ASSEMBLY. INSTALL SYSTEM IN STRICT COMPLIANCE WITH THE U.L. ASSEMBLY INDICATED IN THE ARCHITECTURAL DRAWINGS AND SPECIFICATIONS.
- ALL PIPING, CONDUIT, AND OUTLET BOXES (ELECTRIC, TELEPHONE, COMPUTER, ETC.) IN FIRE RATED WALLS OR CEILINGS SHALL BE CONSTRUCTED OF NON-COMBUSTIBLE MATERIAL.
- OUTLET BOXES (ELECTRIC, TELEPHONE, COMPUTER, ETC.) ON OPPOSITE SIDES OF FIRE RATED WALLS SHALL BE SEPARATED BY A HORIZONTAL DISTANCE OF 24 INCHES OR PROTECTED BY OTHER MEANS ALLOWED BY THE SPECIFIC U.L. ASSEMBLY.
- REFER TO ARCHITECTURAL DRAWINGS FOR LOCATIONS OF STC RATED WALLS. OUTLET BOXES (ELECTRIC, TELEPHONE, COMPUTER, ETC.) ON OPPOSITE SIDES OF STC RATED WALLS SHALL BE LIMITED TO TWO OUTLET BOXES PER STUD SPACE AND COVERED WITH "PUTTY PAD" TYPE MOLDABLE FIRE BARRIER.
- FIELD VERIFY THE EXACT LOCATION OF ALL FLOOR BOXES AND POKE THROUGHs WITH ARCHITECT PRIOR TO ROUGH-IN.
- PROVIDE ALL ISOLATED GROUND CIRCUITS WITH INDIVIDUAL NEUTRAL CONDUCTORS AND EQUIPMENT GROUND CONDUCTORS.
- THE FIRE ALARM SYSTEM SHOWN HAS BEEN DESIGNED PER THE REQUIREMENTS OF NFPA 72. DEVICES SHOWN INDICATE THE DESIGN INTENT AND SHALL BE THE MINIMUM PROVIDED. SYSTEM SUPPLIER SHALL PROVIDE ANY ADDITIONAL CODE REQUIRED DEVICES OR DEVICES REQUIRED BY THE AUTHORITY HAVING JURISDICTION.
- REFER TO ARCHITECTURAL REFLECTED CEILING PLANS FOR EXACT LIGHT FIXTURE LOCATIONS. VERIFY ALL DISCREPANCIES WITH ARCHITECT PRIOR TO ROUGH-IN.

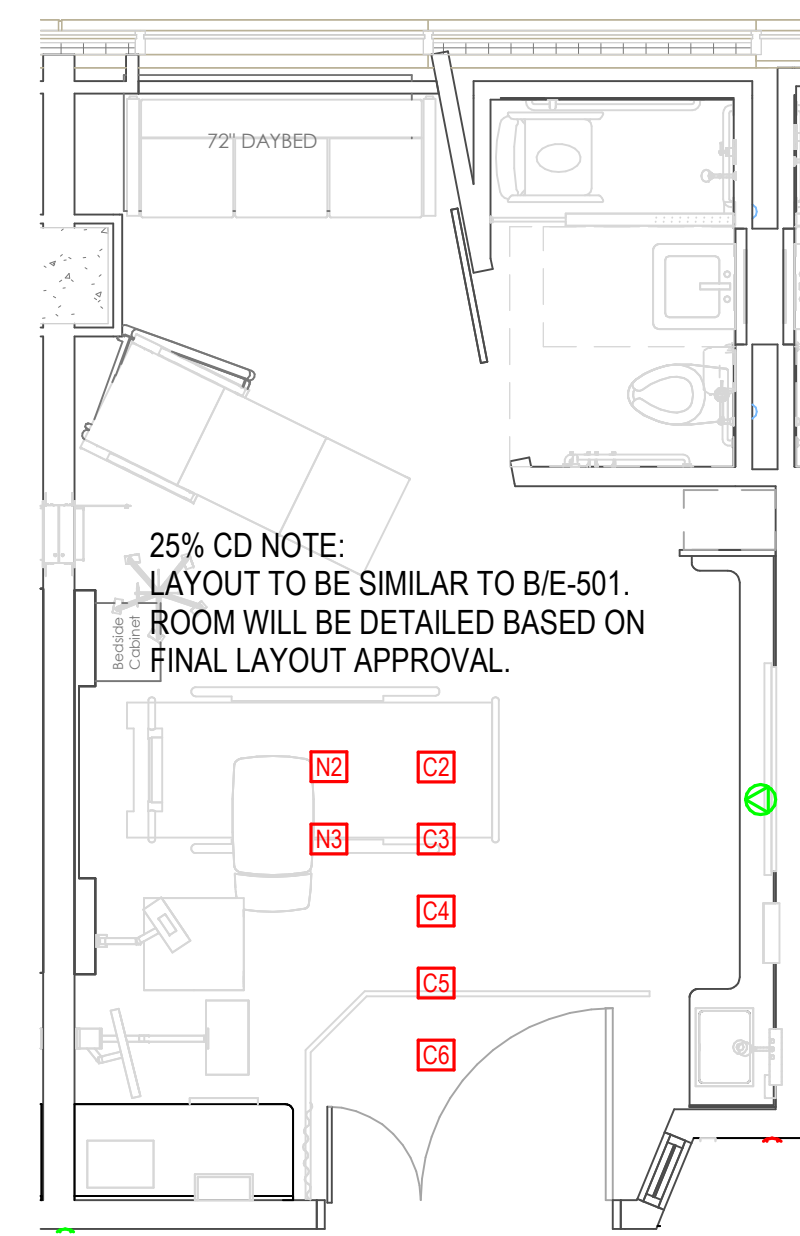
KEYNOTES

- E1 CONTRACTOR TO VERIFY EXISTING PANELBOARD HAS BEEN PROVIDED WITH FEED-THRU LUGS. IF EXISTING IS NOT PROVIDED WITH FEED-THRU LUGS, CONTRACTOR TO PROVIDE FEED-THRU LUG KIT TO FEED PANELBOARD AS INDICATED ON ONE-LINE DIAGRAM.
- P1 LOCATION OF EXTERNAL SURGE PROTECTIVE DEVICE FOR PANELBOARD.



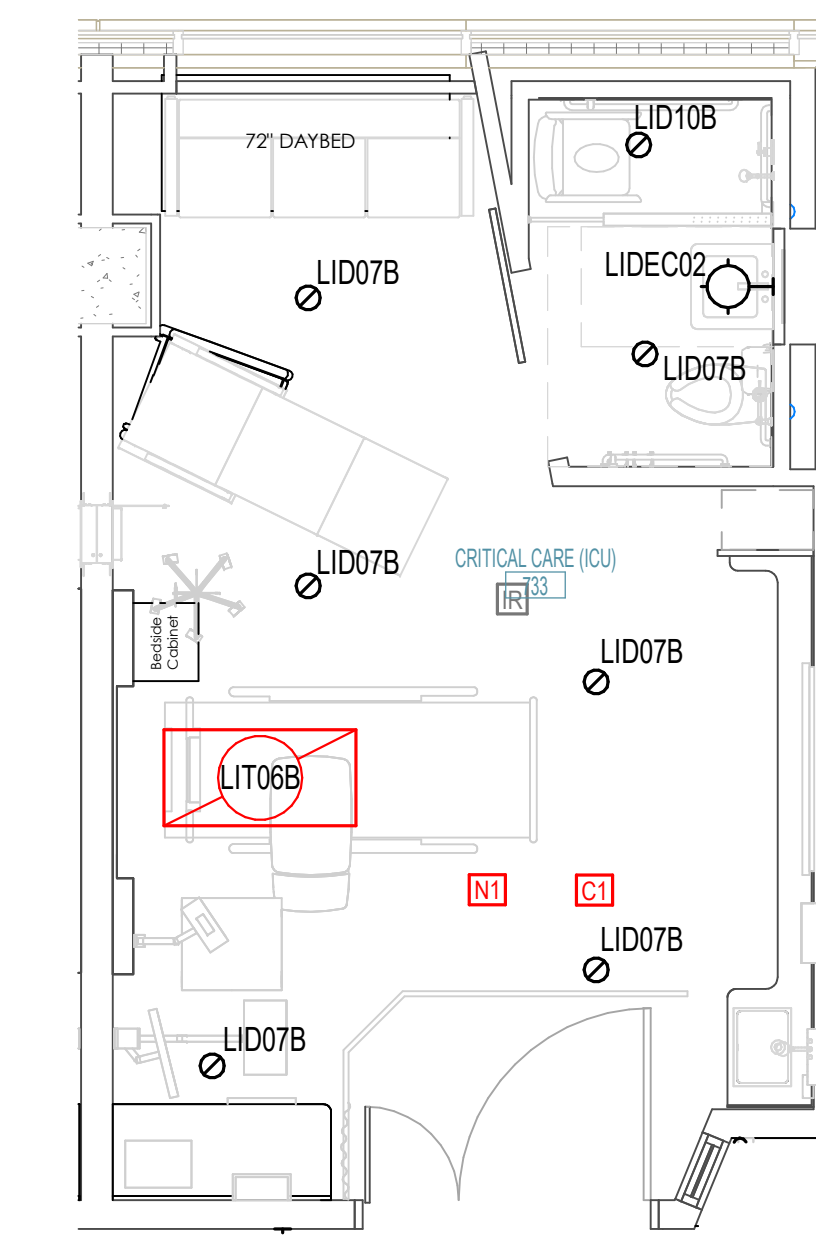
E ENLARGED ELECTRICAL ROOM

0' 2' 4' 6' 1/4" = 1'-0"



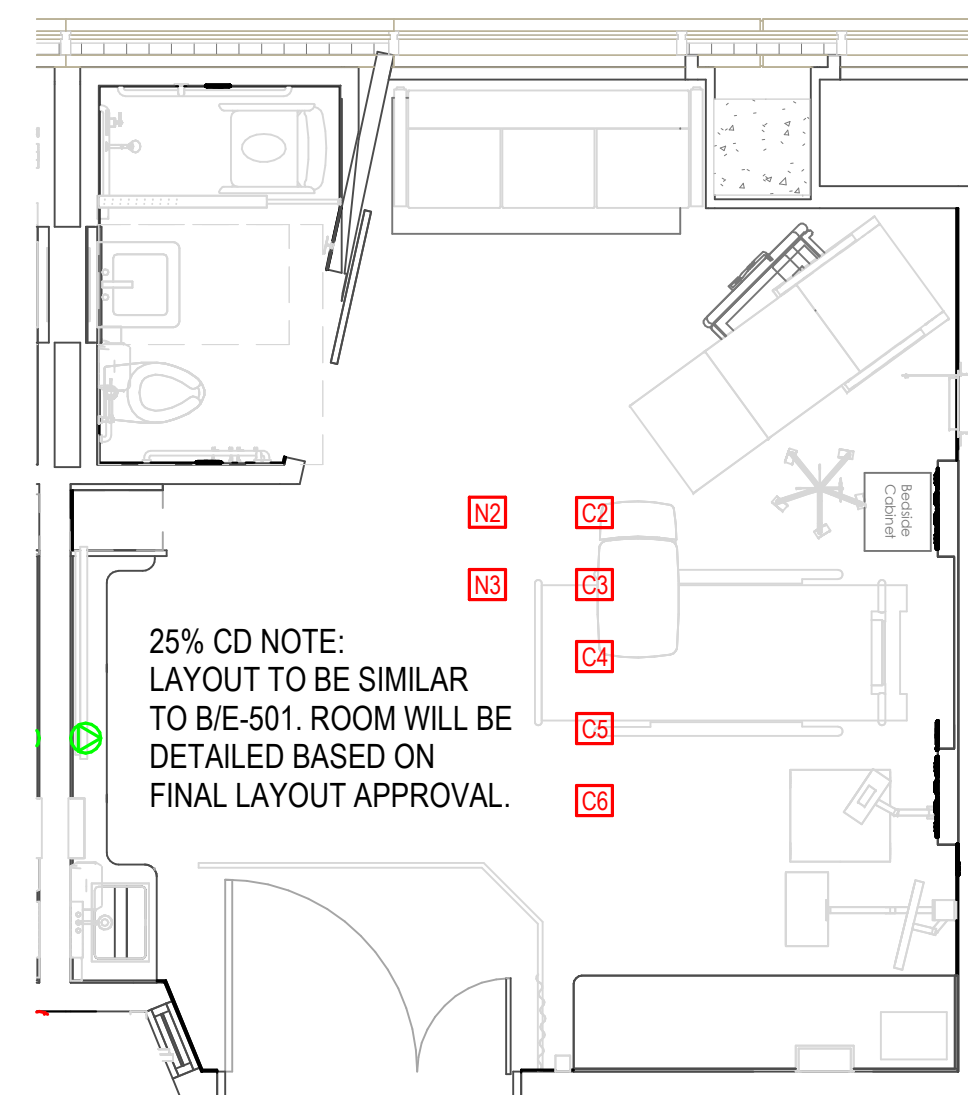
D TYPICAL ENLARGED CRITICAL CARE (ICU) - POWER

0' 2' 4' 6' 1/4" = 1'-0"



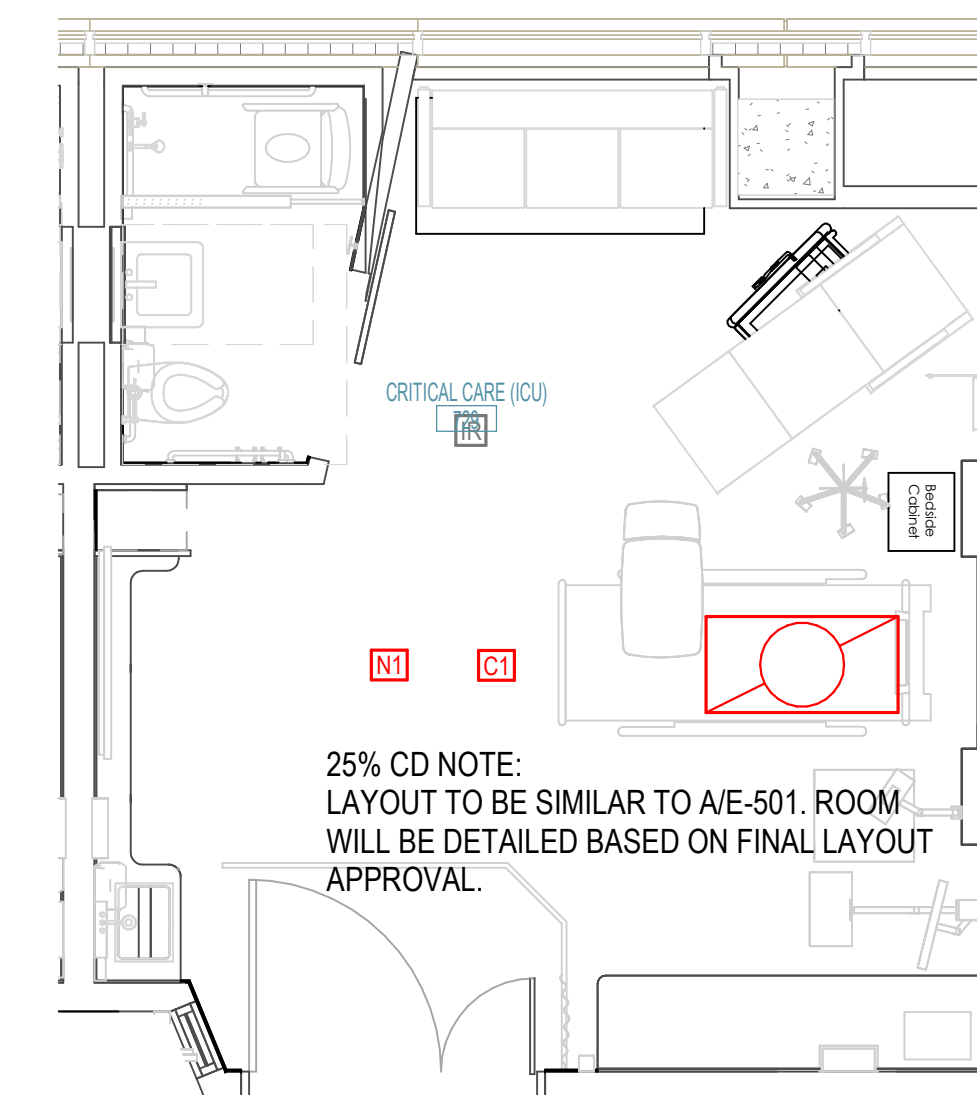
C TYPICAL ENLARGED CRITICAL CARE (ICU) - LIGHTING

0' 2' 4' 6' 1/4" = 1'-0"



B TYPICAL ENLARGED CRITICAL CARE (ICU) - POWER

0' 2' 4' 6' 1/4" = 1'-0"



A TYPICAL ENLARGED CRITICAL CARE (ICU) - LIGHTING

0' 2' 4' 6' 1/4" = 1'-0"

No.	Date	Description

PROGRESS DRAWING
12/17/2024 1:55:23 PM
NOT FOR CONSTRUCTION

Project No.: 2040-821203
Date: 12/11/2024
Scale: As indicated

MERCY NWA HOSPITAL
Building No.: 1388
ROGERS 7TH FLOOR ICU
2710 RIFE MEDICAL LANE, ROGERS, AR 72758

ELECTRICAL ENLARGED PLANS

E-502

PEC PROFESSIONAL ENGINEERING CONSULTANTS P.A.
1524 S UTICHAVE, SUITE 1400, TULSA, OK 74104
918-688-5400 www.pec.com
PEC PROJECT NUMBER: 240179-000 AR C.O.A.#542 PEELS EXPIRES: DECEMBER 31, 2024