

HVAC DEMO NOTES

1. PLANS ARE SCHEMATIC IN NATURE. LAYOUT IS BASED ON BEST AVAILABLE INFORMATION. CONTRACTOR SHALL FIELD VERIFY EXISTING CONDITIONS AND DIMENSIONS. BRING ANY DISCREPANCIES FROM THE DRAWINGS AND NOTES TO THE OWNER'S REPRESENTATIVE IMMEDIATELY. MINOR CHANGES IN THE SCOPE OF THE DEMOLITION WORK SHALL NOT JUSTIFY AN ADDITIONAL COST.
2. DEMOLISH ALL DUCTWORK, PIPING, AND EQUIPMENT SHOWN SHADED, DASHED AND IN A DARK LINE WEIGHT.

No.	Date	Description

PROGRESS DRAWING
 12/20/2024 10:49:33 AM
 NOT FOR CONSTRUCTION

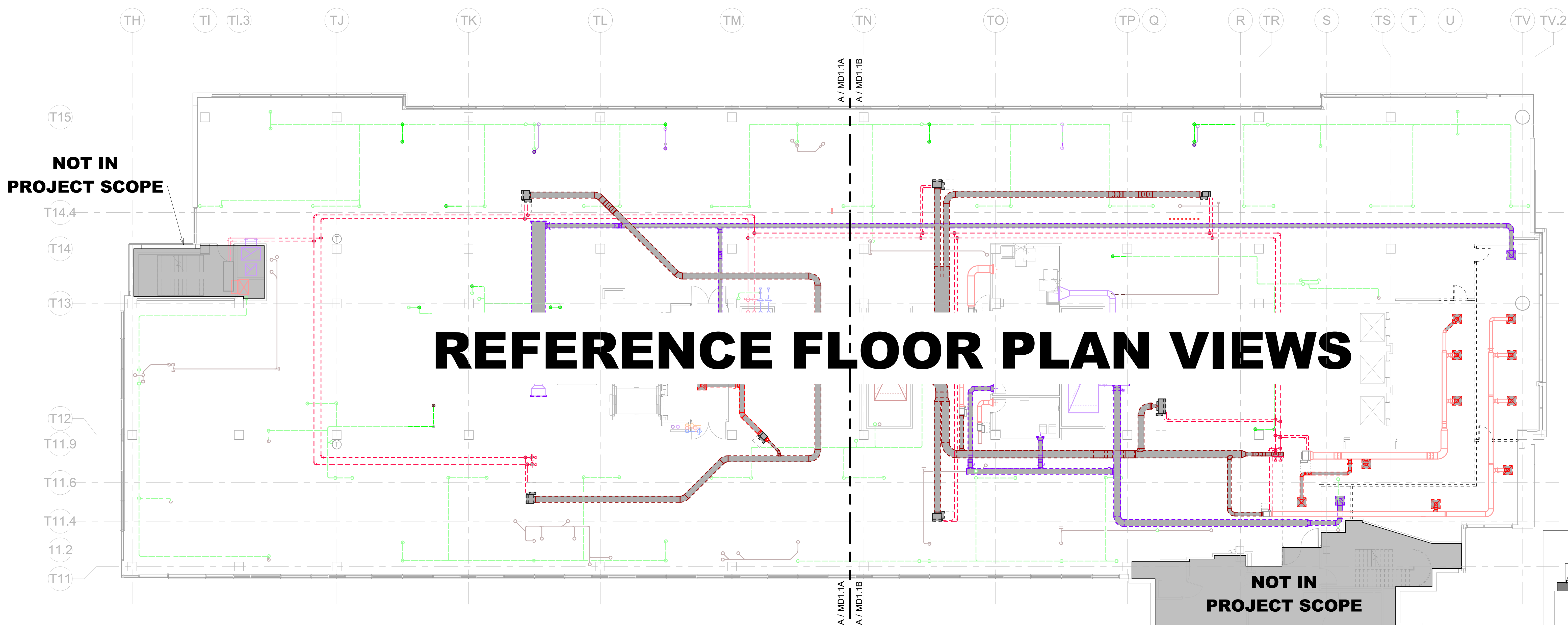
Project No.: 2040-821203
 Date: 12/11/2024
 Scale: As indicated

MERCY NWA HOSPITAL
 Building No.: 1388
ROGERS 7TH FLOOR ICU
 2710 RIFE MEDICAL LANE, ROGERS, AR 72758
7TH FLOOR MECHANICAL DEMO PLAN - OVERALL



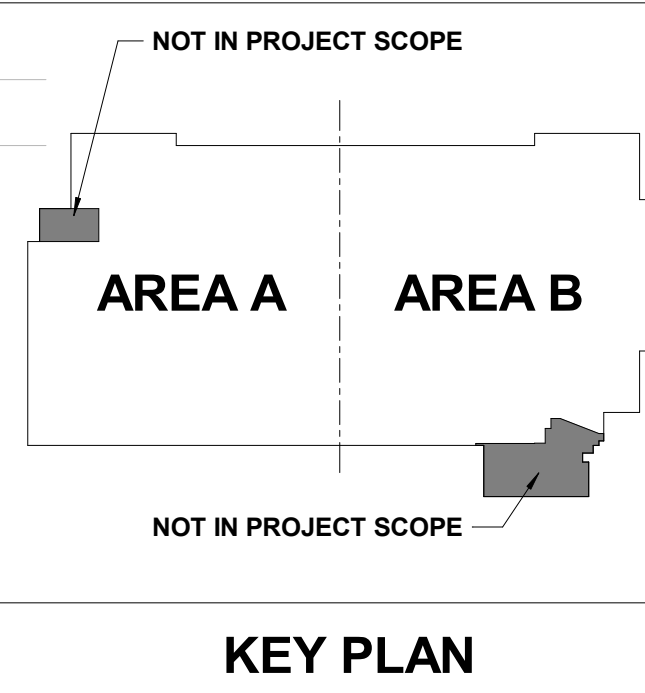
7TH FLOOR
MD1.1

PEC
 PROFESSIONAL ENGINEERING CONSULTANTS, P.A.
 624 S. UTICHAVE, SUITE 400, TULSA, OK 74104
 918-688-5400 www.pec.com
 PEC PROJECT NUMBER: 240179/000 AR C.O.A. #542 P.E.L.S. EXPIRES: DECEMBER 31, 2024



NOT IN PROJECT SCOPE

NOT IN PROJECT SCOPE



7TH FLOOR MECHANICAL PLAN - OVERALL
 3/32" = 1'-0"

HVAC DEMO NOTES

- PLANS ARE SCHEMATIC IN NATURE. LAYOUT IS BASED ON BEST AVAILABLE INFORMATION. CONTRACTOR SHALL FIELD VERIFY EXISTING CONDITIONS AND DIMENSIONS. BRING ANY DISCREPANCIES FROM THE DRAWINGS AND NOTES TO THE OWNER'S REPRESENTATIVE IMMEDIATELY. MINOR CHANGES IN THE SCOPE OF THE DEMOLITION WORK SHALL NOT JUSTIFY AN ADDITIONAL COST.
- DEMOLISH ALL DUCTWORK, PIPING, AND EQUIPMENT SHOWN SHADED, DASHED AND IN A DARK LINE WEIGHT.

SHEET KEYNOTES

Architect Logos

No.	Date	Description

PROGRESS DRAWING
12/20/2024 10:49:41 AM
NOT FOR CONSTRUCTION

Step & Step

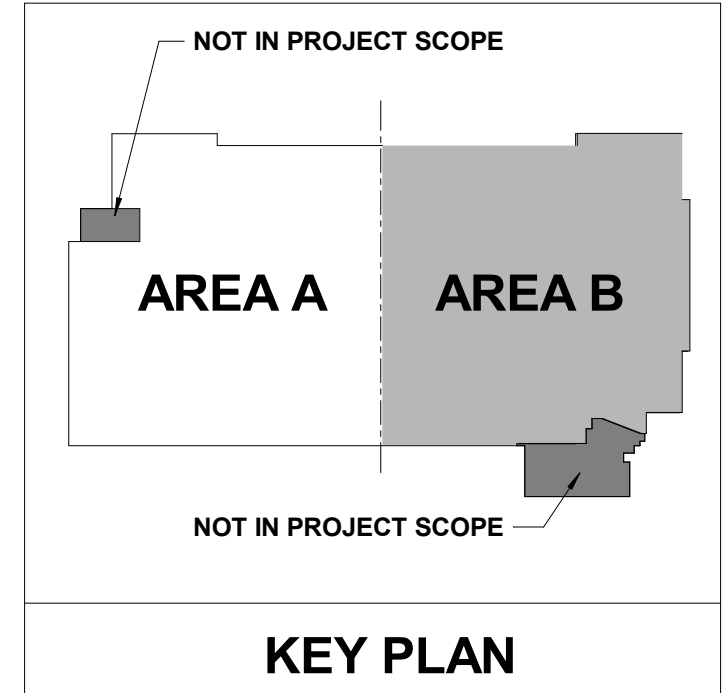
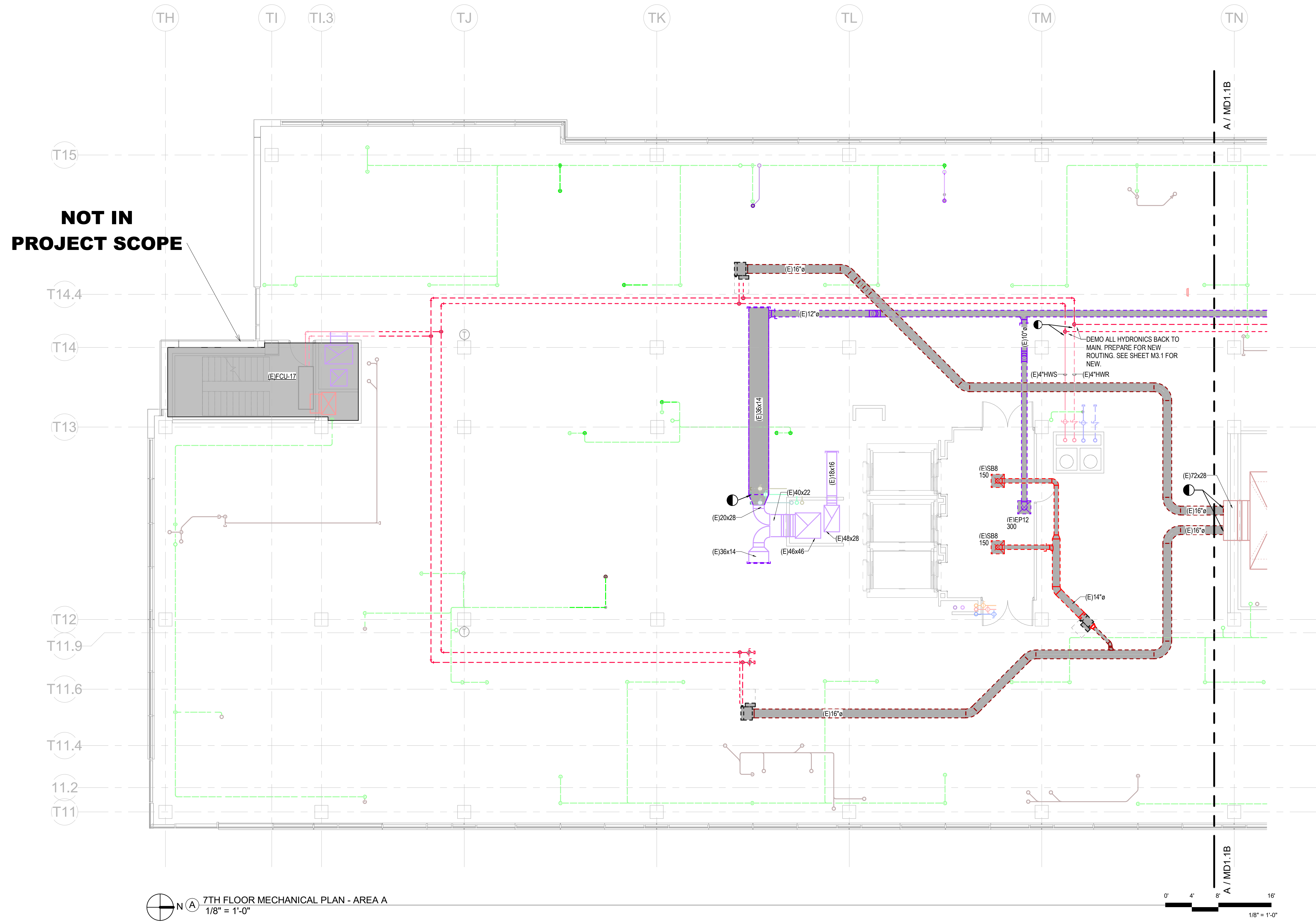
Mercy Project No.: 2040-821203
Date: 12/11/2024
Scale: As indicated

MERCY NWA HOSPITAL
Building No.: 1388
ROGERS 7TH FLOOR ICU
2710 RIFE MEDICAL LANE, ROGERS, AR 72758
Sheet Name: 7TH FLOOR MECHANICAL DEMO PLAN - AREA A



Floor No: 7TH FLOOR
Sheet No: **MD1.1A**

PEC
PROFESSIONAL ENGINEERING CONSULTANTS, P.A.
624 S. UTICHAVE, SUITE 1400, TULSA, OK 74104
918-668-5400 www.pec.com
PEC PROJECT NUMBER: 240179J000 AR C.O.A. #542 PEELS EXPIRES: DECEMBER 31, 2024



12/20/2024 10:49:41 AM
Autodesk Docs://H-AR-MERCY - Mercy Hospital NW Arkansas Projects/240179-000_MIECH_R23.rvt

7TH FLOOR MECHANICAL PLAN - AREA A
1/8" = 1'-0"

0' 4' 8' 16'
1/8" = 1'-0"

HVAC DEMO NOTES

1. PLANS ARE SCHEMATIC IN NATURE. LAYOUT IS BASED ON BEST AVAILABLE INFORMATION. CONTRACTOR SHALL FIELD VERIFY EXISTING CONDITIONS AND DIMENSIONS. BRING ANY DISCREPANCIES FROM THE DRAWINGS AND NOTES TO THE OWNER'S REPRESENTATIVE IMMEDIATELY. MINOR CHANGES IN THE SCOPE OF THE DEMOLITION WORK SHALL NOT JUSTIFY AN ADDITIONAL COST.
2. DEMOLISH ALL DUCTWORK, PIPING, AND EQUIPMENT SHOWN SHADED, DASHED AND IN A DARK LINE WEIGHT.

SHEET KEYNOTES

Architect Logos

No.	Date	Description

PROGRESS DRAWING
12/20/2024 10:49:47 AM
NOT FOR CONSTRUCTION

Sheet & Date

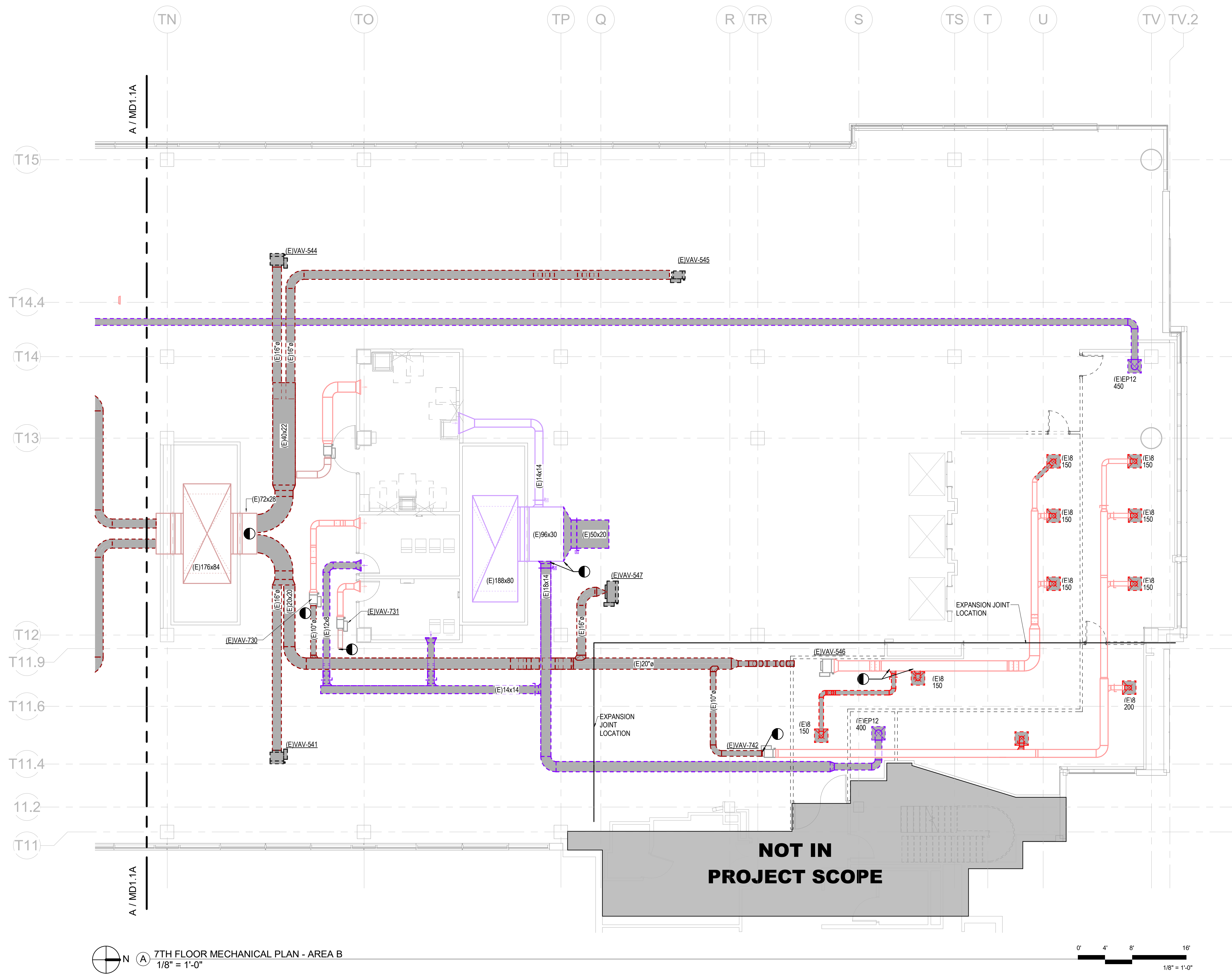
Mercy Project No.: 2040-821203
Date: 12/11/2024
Scale: As indicated

MERCY NWA HOSPITAL
Building No.: 1388
ROGERS 7TH FLOOR ICU
2710 RIFE MEDICAL LANE, ROGERS, AR 72758
Sheet Name: 7TH FLOOR MECHANICAL DEMO PLAN - AREA B

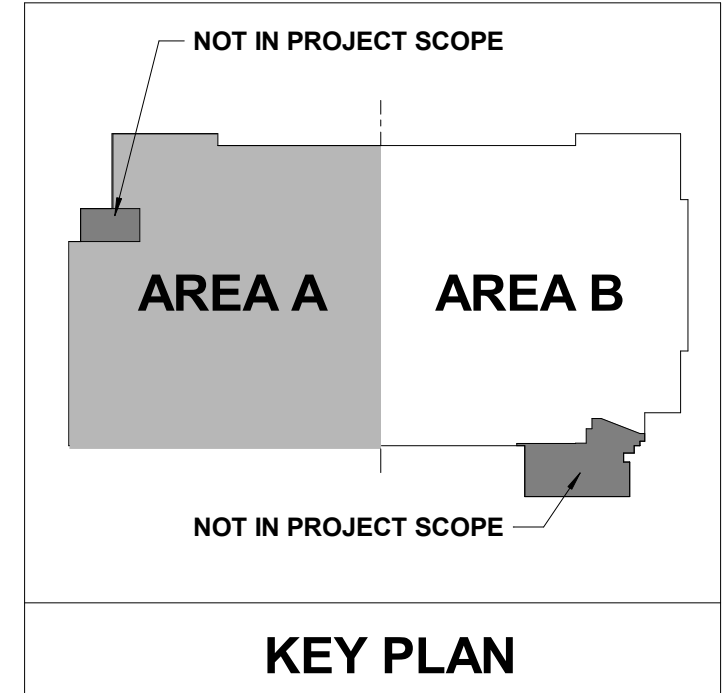
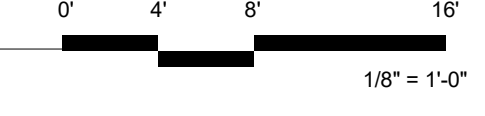


Floor No: 7TH FLOOR
Sheet No: **MD1.1B**

PEC
PROFESSIONAL ENGINEERING CONSULTANTS, P.A.
1524 S. LITTLER AVE. SUITE 1400, TULSA, OK 74104
918-668-5400 www.pec.com
PEC PROJECT NUMBER: 240179400 AR.C.O.A.#542 P.E.L.S EXPIRES: DECEMBER 31, 2024



(A) 7TH FLOOR MECHANICAL PLAN - AREA B
1/8" = 1'-0"



HVAC GENERAL NOTES

- DUCT SIZES SHOWN ARE ACTUAL INSIDE CLEAR DIMENSIONS. INSULATION THICKNESS HAS NOT BEEN ACCOUNTED FOR. DUCTWORK EXPOSED TO SPACE SHALL NOT HAVE EXTERIOR INSULATION.
- T-STATS SHALL BE LOCATED NEXT TO LIGHT SWITCH WITHIN THE ROOM SHOWN. COORDINATE WITH GC AND ELECTRICAL CONTRACTOR TO MATCH HEIGHT AND LOCATION.
- AVOID ROUTING DUCTWORK OVER ELECTRICAL ROOMS AND ELECTRICAL PANELS. MAINTAIN N.E.C. CLEARANCES. COORDINATE ROUTING WITH ELECTRICAL CONTRACTOR.
- ALL SUPPLY AND EXHAUST AIR BRANCHES FOR DIFFUSERS OR GRILLES SHALL HAVE MANUAL BALANCE DAMPERS. RETURN AIR BRANCHES SHALL HAVE MANUAL BALANCE DAMPERS. FOR PLAN CLARITY, NOT ALL DAMPERS MAY BE SHOWN. WHERE HARD LID CEILINGS PREVENT BALANCE DAMPER ACCESS, CONFIRM WITH GRID SCHEDULE OR WITH ENGINEER TO USE GRID'S OR REMOTE BALANCE DAMPERS IF NOT ALREADY INDICATED.
- REFER TO CEILING ALLOCATION DETAIL FOR INSTALLATION ELEVATIONS OF DUCTWORK WITHIN THE CEILING SPACE.
- PROVIDE FLEXIBLE DUCT AND PIPE CONNECTIONS TO ALL MOTORIZED EQUIPMENT.
- VERIFY ALL EQUIPMENT ACCESS PANELS WITH MANUFACTURER AND ARCHITECT. ACCESS PANELS SHALL BE 24X24 UNLESS NOTED OTHERWISE. LOCATIONS SHALL BE COORDINATED WITH THE ARCHITECT AND THE LOCATIONS OF THE EQUIPMENT THEY SERVE.
- REFER TO GRID SCHEDULE FOR DUCT CONNECTION SIZES. REFER TO TERMINAL BOX SCHEDULE FOR INLET DUCT SIZES.
- CEILING COORDINATION OF ALL MEP SYSTEMS (LIGHTING, DUCTWORK, DIFFUSERS, ELECTRICAL, ETC.) MUST BE COMPLETED BY THE CONTRACTOR PRIOR TO THE START OF ANY NEW INSTALLATION.

No.	Date	Description

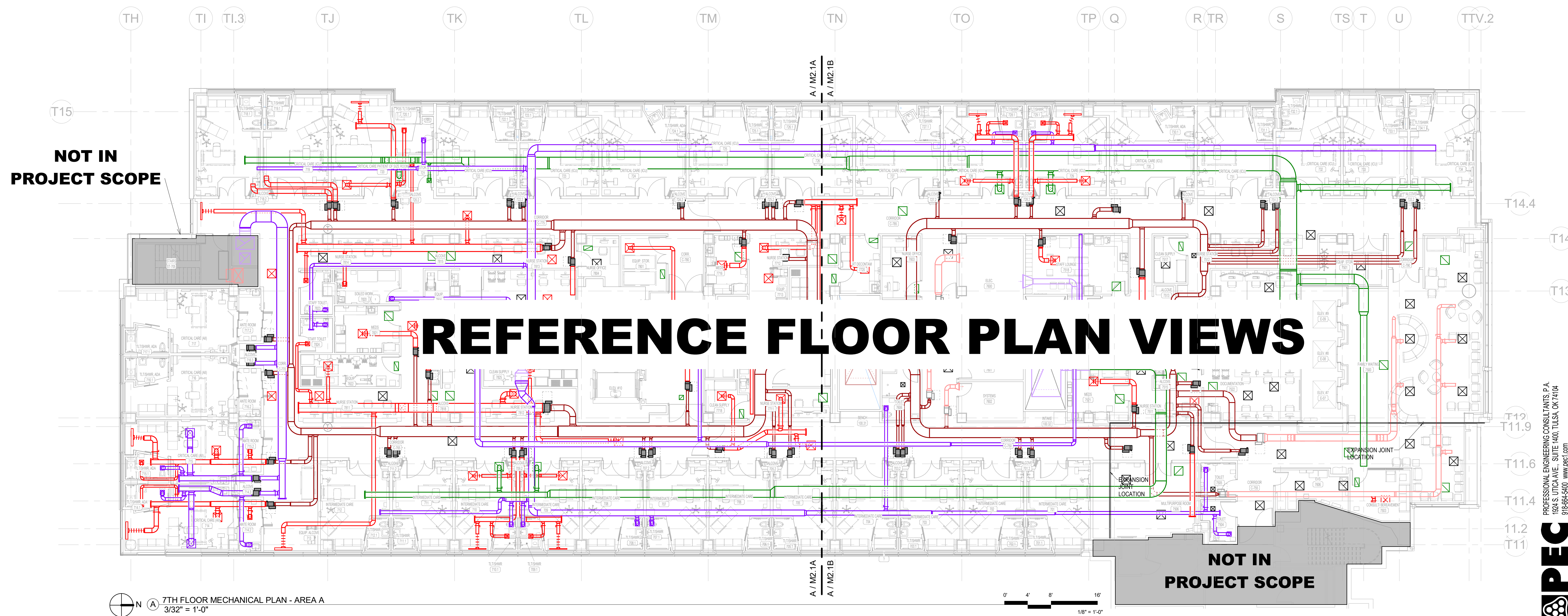
PROGRESS DRAWING
 12/20/2024 10:50:09 AM
 NOT FOR CONSTRUCTION

Project No.: 2040-821203
 Date: 12/11/2024
 Scale: As indicated

MERCY NWA HOSPITAL
 Building No.: 1388
ROGERS 7TH FLOOR ICU
 2710 RIFE MEDICAL LANE, ROGERS, AR 72758
7TH FLOOR MECHANICAL PLAN - OVERALL

Mercy

7TH FLOOR
M2.1



12/20/2024 10:50:09 AM
 Autodesk Docs: \\H-AR-MERCY - Mercy Hospital NW Arkansas Projects\240179-000_MIECH_R23.rvt

PEC
 PROFESSIONAL ENGINEERING CONSULTANTS, P.A.
 624 S. DUTCHMAN, SUITE 1400, TULSA, OK 74104
 918-688-6400 www.pec.com
 PEC PROJECT NUMBER: 240179-000 AR.C.O.A. #542 PEELS EXPIRES: DECEMBER 31, 2024



HVAC GENERAL NOTES

- DUCT SIZES SHOWN ARE ACTUAL INSIDE CLEAR DIMENSIONS. INSULATION THICKNESS HAS NOT BEEN ACCOUNTED FOR. DUCTWORK EXPOSED TO SPACE SHALL NOT HAVE EXTERIOR INSULATION.
- T-STATS SHALL BE LOCATED NEXT TO LIGHT SWITCH WITHIN THE ROOM SHOWN. COORDINATE WITH GC AND ELECTRICAL CONTRACTOR TO MATCH HEIGHT AND LOCATION.
- AVOID ROUTING DUCTWORK OVER ELECTRICAL ROOMS AND ELECTRICAL PANELS. MAINTAIN N.E.C. CLEARANCES. COORDINATE ROUTING WITH ELECTRICAL CONTRACTOR.
- ALL SUPPLY AND EXHAUST AIR BRANCHES FOR DIFFUSERS OR GRILLES SHALL HAVE MANUAL BALANCE DAMPERS. RETURN AIR BRANCHES SHALL HAVE MANUAL BALANCE DAMPERS. FOR PLAN CLARITY, NOT ALL DAMPERS MAY BE SHOWN. WHERE HARD LID CEILINGS PREVENT BALANCE DAMPER ACCESS, CONFIRM WITH GRD SCHEDULE OR WITH ENGINEER TO USE OBD'S OR REMOTE BALANCE DAMPERS IF NOT ALREADY INDICATED.
- REFER TO CEILING ALLOCATION DETAIL FOR INSTALLATION ELEVATIONS OF DUCTWORK WITHIN THE CEILING SPACE.
- PROVIDE FLEXIBLE DUCT AND PIPE CONNECTIONS TO ALL MOTORIZED EQUIPMENT.
- VERIFY ALL EQUIPMENT ACCESS PANELS WITH MANUFACTURER AND ARCHITECT. ACCESS PANELS SHALL BE 24X24 UNLESS NOTED OTHERWISE. LOCATIONS SHALL BE COORDINATED WITH THE ARCHITECT AND THE LOCATIONS OF THE EQUIPMENT THEY SERVE.
- REFER TO GRD SCHEDULE FOR DUCT CONNECTION SIZES. REFER TO TERMINAL BOX SCHEDULE FOR INLET DUCT SIZES.
- CEILING COORDINATION OF ALL MEP SYSTEMS (LIGHTING, DUCTWORK, DIFFUSERS, ELECTRICAL, ETC.) MUST BE COMPLETED BY THE CONTRACTOR PRIOR TO THE START OF ANY NEW INSTALLATION.

SHEET KEYNOTES

No.	Date	Description

PROGRESS DRAWING
12/20/2024 10:50:26 AM
NOT FOR CONSTRUCTION

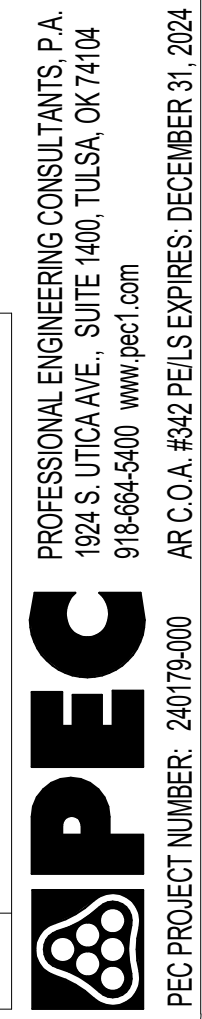
Sheet No. 1388

Mercy Project No.: 2040-821203
Date: 12/11/2024
Scale: As indicated

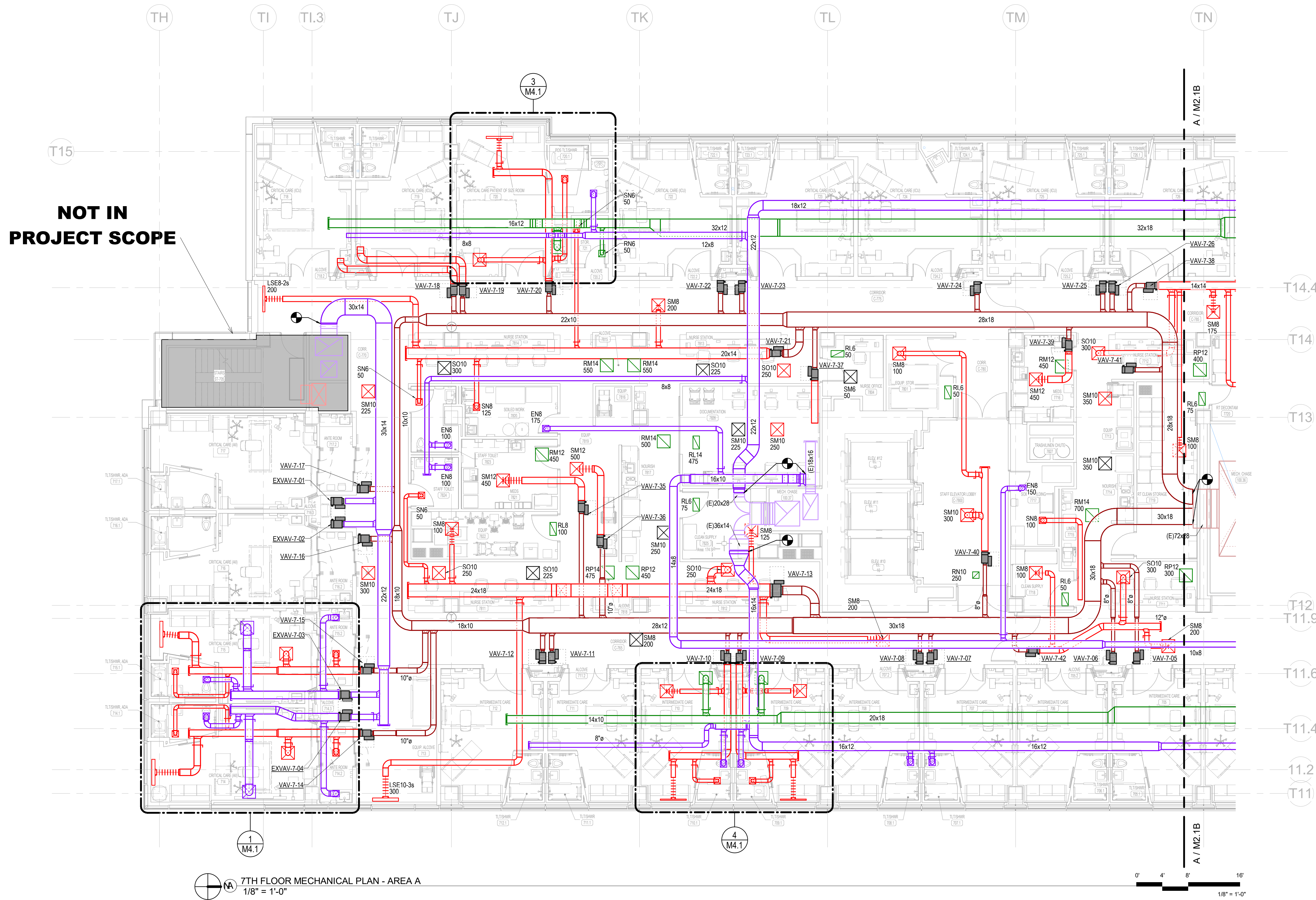
MERCY NWA HOSPITAL
Building No.: 1388
ROGERS 7TH FLOOR ICU
2710 RIFE MEDICAL LANE, ROGERS, AR 72758
7TH FLOOR MECHANICAL PLAN - AREA A



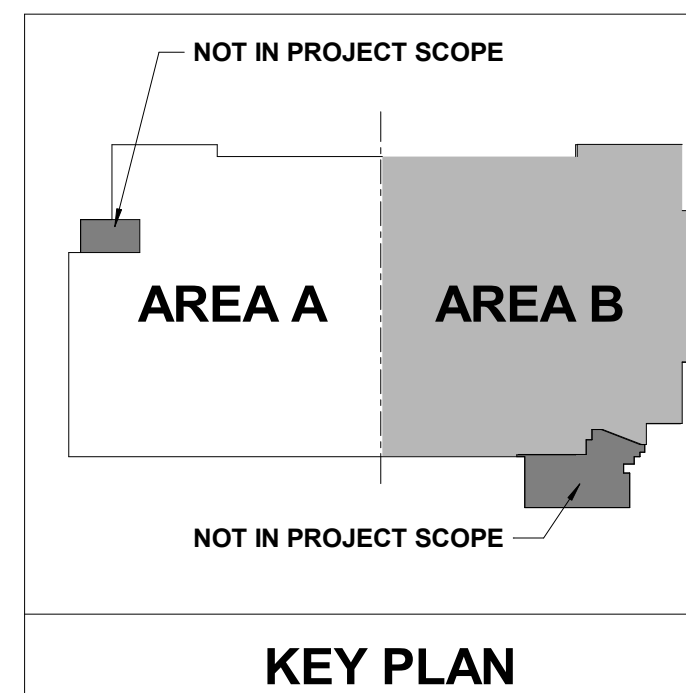
7TH FLOOR
M2.1A



PROFESSIONAL ENGINEERING CONSULTANTS P.A.
624 S. UTICA AVE. SUITE 1400, TULSA, OK 74104
918-688-5400 www.mepc.com
PEC PROJECT NUMBER: 240179-000 AR C.O.A. #542 P.E.L.S. EXPIRES: DECEMBER 31, 2024



7TH FLOOR MECHANICAL PLAN - AREA A
1/8" = 1'-0"





HVAC GENERAL NOTES

- DUCT SIZES SHOWN ARE ACTUAL INSIDE CLEAR DIMENSIONS. INSULATION THICKNESS HAS NOT BEEN ACCOUNTED FOR. DUCTWORK EXPOSED TO SPACE SHALL NOT HAVE EXTERIOR INSULATION.
- T-STATS SHALL BE LOCATED NEXT TO LIGHT SWITCH WITHIN THE ROOM SHOWN. COORDINATE WITH GR-AND ELECTRICAL CONTRACTOR TO MATCH HEIGHT AND LOCATION.
- AVOID ROUTING DUCTWORK OVER ELECTRICAL ROOMS AND ELECTRICAL PANELS. MAINTAIN N.E.C. CLEARANCES. COORDINATE ROUTING WITH ELECTRICAL CONTRACTOR.
- ALL SUPPLY AND EXHAUST AIR BRANCHES FOR DIFFUSERS OR GRILLES SHALL HAVE MANUAL BALANCE DAMPERS. RETURN AIR BRANCHES SHALL HAVE MANUAL BALANCE DAMPERS. FOR PLAN CLARITY, NOT ALL DAMPERS MAY BE SHOWN. WHERE HARD LID CEILINGS PREVENT BALANCE DAMPER ACCESS, CONFIRM WITH GRD SCHEDULE OR WITH ENGINEER TO USE OBD'S OR REMOTE BALANCE DAMPERS IF NOT ALREADY INDICATED.
- REFER TO CEILING ALLOCATION DETAIL FOR INSTALLATION ELEVATIONS OF DUCTWORK WITHIN THE CEILING SPACE.
- PROVIDE FLEXIBLE DUCT AND PIPE CONNECTIONS TO ALL MOTORIZED EQUIPMENT.
- VERIFY ALL EQUIPMENT ACCESS PANELS WITH MANUFACTURER AND ARCHITECT. ACCESS PANELS SHALL BE 24X24 UNLESS NOTED OTHERWISE. LOCATIONS SHALL BE COORDINATED WITH THE ARCHITECT AND THE LOCATIONS OF THE EQUIPMENT THEY SERVE.
- REFER TO GRD SCHEDULE FOR DUCT CONNECTION SIZES. REFER TO TERMINAL BOX SCHEDULE FOR INLET DUCT SIZES.
- CEILING COORDINATION OF ALL MEP SYSTEMS (LIGHTING, DUCTWORK, DIFFUSERS, ELECTRICAL, ETC.) MUST BE COMPLETED BY THE CONTRACTOR PRIOR TO THE START OF ANY NEW INSTALLATION.

SHEET KEYNOTES

No.	Date	Description

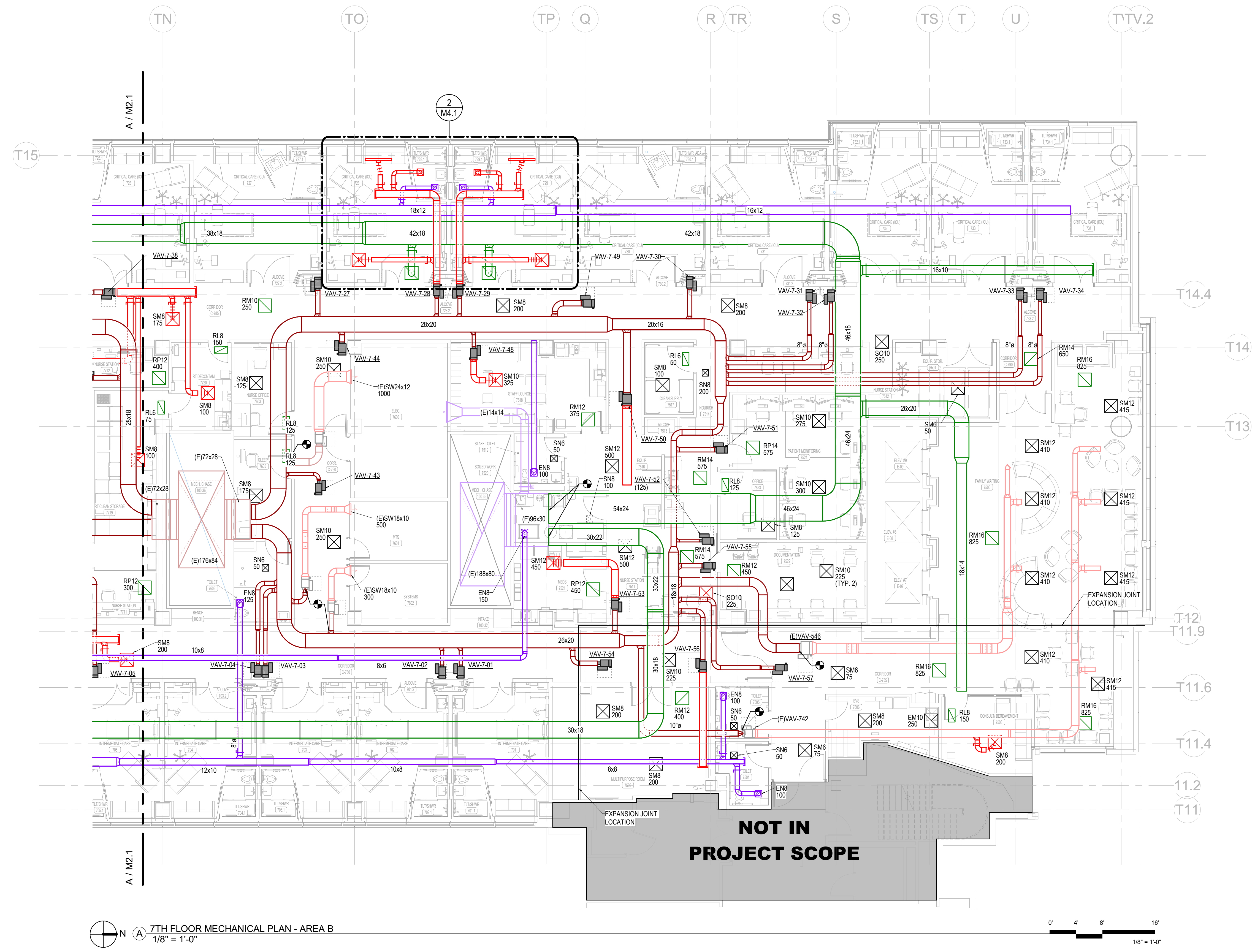
PROGRESS DRAWING
12/20/2024 10:50:39 AM
NOT FOR CONSTRUCTION

Project No.: 2040-821203
Date: 12/11/2024
Scale: As indicated

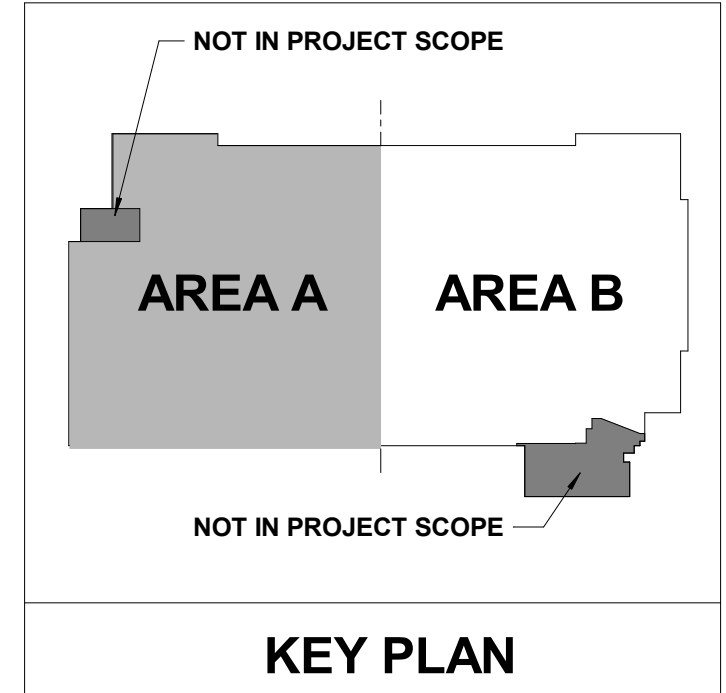
MERCY NWA HOSPITAL
Building No.: 1388
ROGERS 7TH FLOOR ICU
2710 RIFE MEDICAL LANE, ROGERS, AR 72758



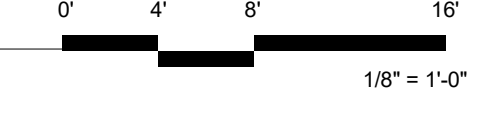
7TH FLOOR
M2.1B



NOT IN PROJECT SCOPE



7TH FLOOR MECHANICAL PLAN - AREA B
1/8" = 1'-0"



PEC
PROFESSIONAL ENGINEERING CONSULTANTS, P.A.
1524 S. UTICA AVE., SUITE 1400, TULSA, OK 74104
918-688-5400 www.pec.com
PEC PROJECT NUMBER: 240179-000 AR.C.O.A.#542 P.E.L.S EXPIRES: DECEMBER 31, 2024



HVAC GENERAL NOTES

1. DUCT SIZES SHOWN ARE ACTUAL INSIDE CLEAR DIMENSIONS. INSULATION THICKNESS HAS NOT BEEN ACCOUNTED FOR. DUCTWORK EXPOSED TO SPACE SHALL NOT HAVE EXTERIOR INSULATION.
2. T-STATS SHALL BE LOCATED NEXT TO LIGHT SWITCH WITHIN THE ROOM SHOWN. COORDINATE WITH GC AND ELECTRICAL CONTRACTOR TO MATCH HEIGHT AND LOCATION.
3. AVOID ROUTING DUCTWORK OVER ELECTRICAL ROOMS AND ELECTRICAL PANELS. MAINTAIN N.E.C. CLEARANCES. COORDINATE ROUTING WITH ELECTRICAL CONTRACTOR.
4. ALL SUPPLY AND EXHAUST AIR BRANCHES FOR DIFFUSERS OR GRILLES SHALL HAVE MANUAL BALANCE DAMPERS. RETURN AIR BRANCHES SHALL HAVE MANUAL BALANCE DAMPERS. FOR PLAN CLARITY, NOT ALL DAMPERS MAY BE SHOWN. WHERE HARD LID CEILINGS PREVENT BALANCE DAMPER ACCESS, CONFIRM WITH GRD SCHEDULE OR WITH ENGINEER TO USE ODDS OR REMOTE BALANCE DAMPERS IF NOT ALREADY INDICATED.
5. REFER TO CEILING ALLOCATION DETAIL FOR INSTALLATION ELEVATIONS OF DUCTWORK WITHIN THE CEILING SPACE.
6. PROVIDE FLEXIBLE DUCT AND PIPE CONNECTIONS TO ALL MOTORIZED EQUIPMENT.
7. VERIFY ALL EQUIPMENT ACCESS PANELS WITH MANUFACTURER AND ARCHITECT. ACCESS PANELS SHALL BE 24X24 UNLESS NOTED OTHERWISE. LOCATIONS SHALL BE COORDINATED WITH THE ARCHITECT AND THE LOCATIONS OF THE EQUIPMENT THEY SERVE.
8. REFER TO GRD SCHEDULE FOR DUCT CONNECTION SIZES. REFER TO TERMINAL BOX SCHEDULE FOR INLET DUCT SIZES.
9. CEILING COORDINATION OF ALL MEP SYSTEMS (LIGHTING, DUCTWORK, DIFFUSERS, ELECTRICAL, ETC.) MUST BE COMPLETED BY THE CONTRACTOR PRIOR TO THE START OF ANY NEW INSTALLATION.

Architect Logo

No.	Date	Description

PROGRESS DRAWING
12/20/2024 10:50:50 AM
NOT FOR CONSTRUCTION

Step #, Rev#

Project No.: 2040-821203
Date: 12/11/2024
Scale: As indicated

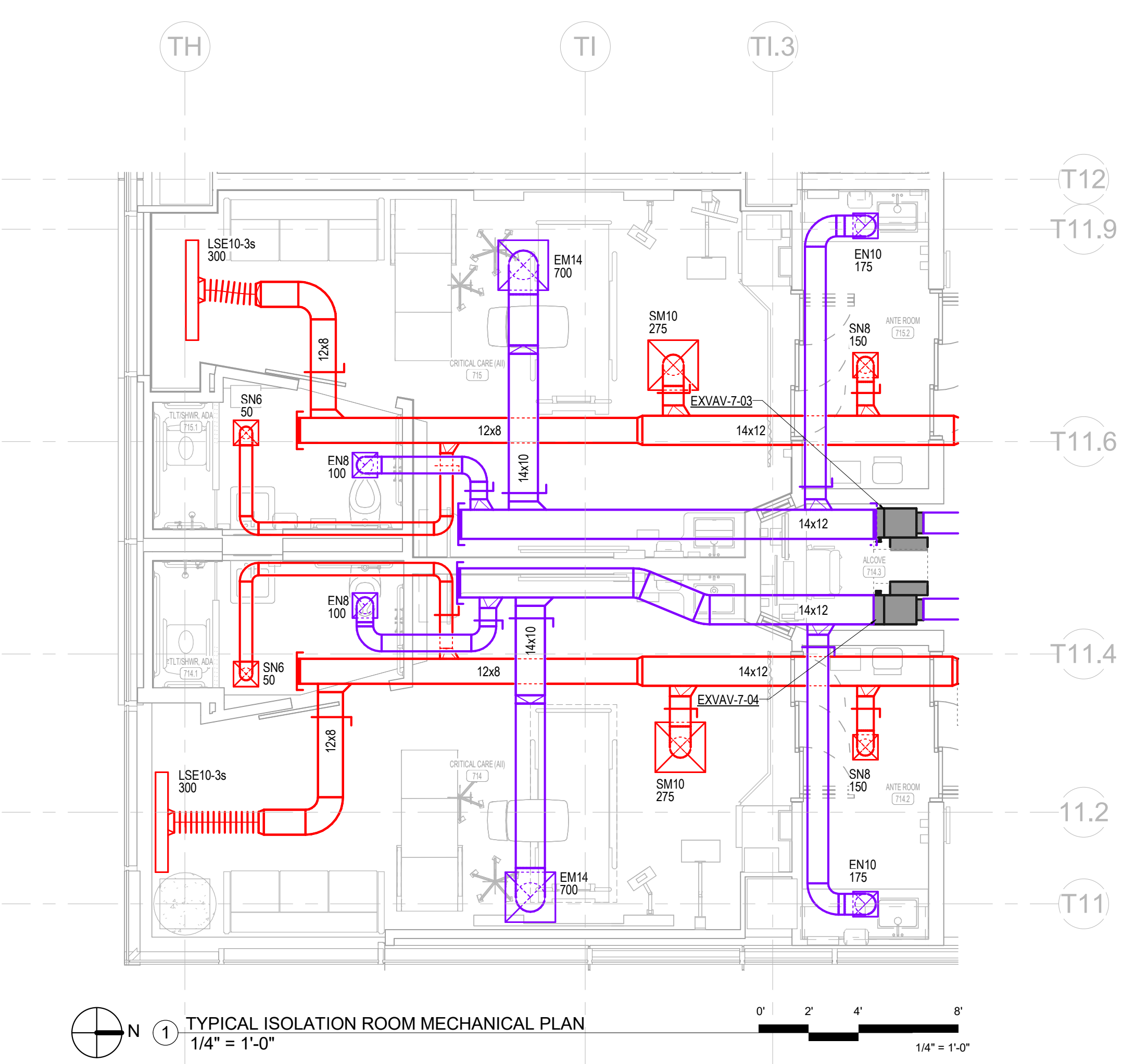
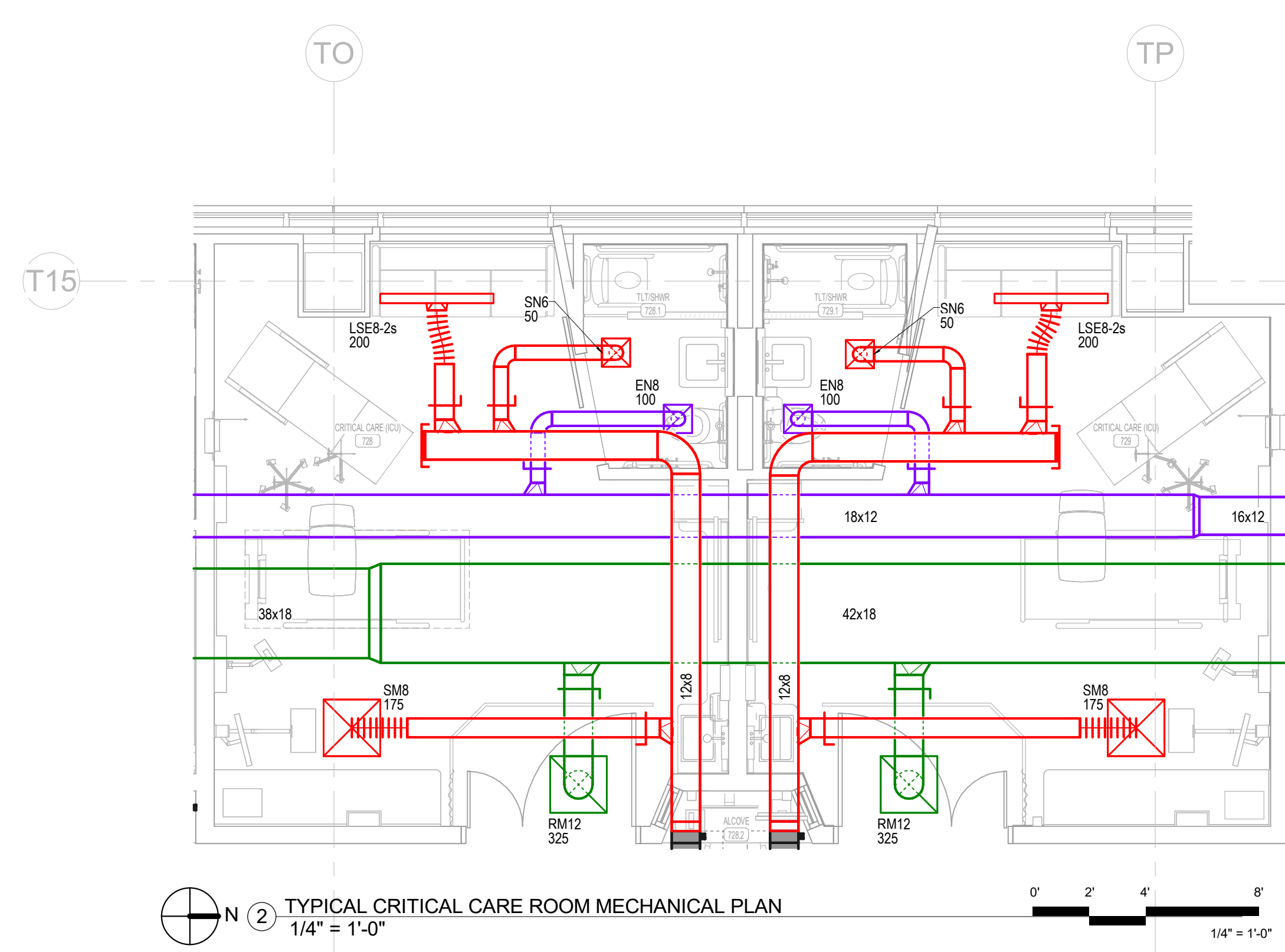
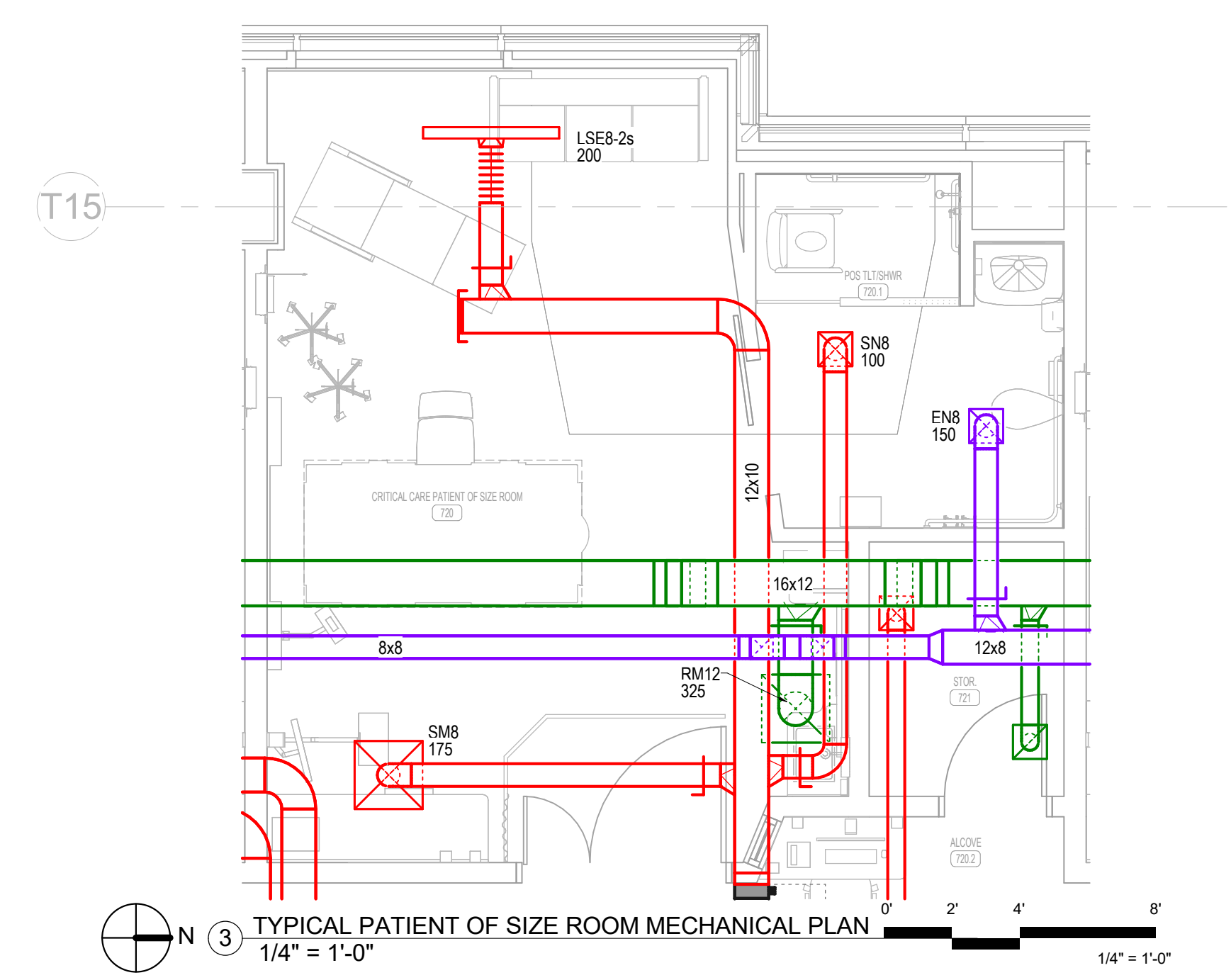
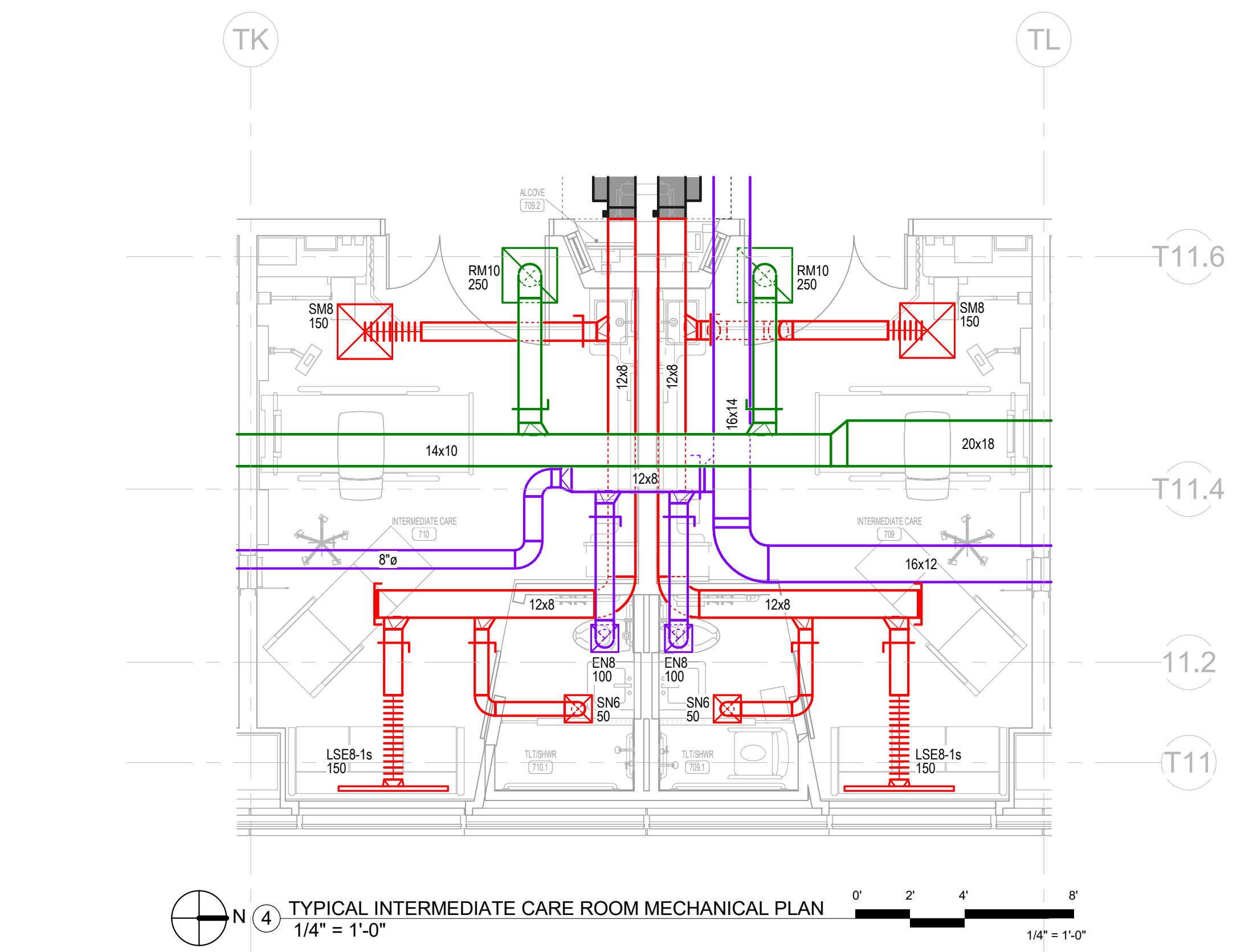
MERCY NWA HOSPITAL
Building No.: 1388
ROGERS 7TH FLOOR ICU
2710 RIFE MEDICAL LANE, ROGERS, AR 72758
Sheet Name: 7TH FLOOR MECHANICAL PLANS - ENLARGED PAT. ROOMS



7TH FLOOR
M4.1

PEC
PROFESSIONAL ENGINEERING CONSULTANTS, P.A.
624 S. UTICHAVE, SUITE 1400, TULSA, OK 74104
918-688-5400 www.pec.com
PEC PROJECT NUMBER: 240179-000 AR C.O.A. #542 PEELS EXPIRES: DECEMBER 31, 2024

12/20/2024 10:50:50 AM
Autodesk Docs: \\HAR\MERCY - Mercy Hospital NW Arkansas Projects\240179-000_MECH_R23.rvt





GRILLE, REGISTER, AND DIFFUSER SCHEDULE

GRILLE, REGISTER, AND DIFFUSER SCHEDULE										
FIRST LETTER IN MARK:			NOTES:							
S	=	SUPPLY DIFFUSER	1. PROVIDE SQUARE TO ROUND ADAPTERS AS REQUIRED TO ACCOMMODATE ROUND RUNOUTS.							
R	=	RETURN GRILLE	2. PROVIDE ALL LAY-IN GRDS WITH 24x24 LAY-IN PANEL AS REQUIRED.							
P	=	PLENUM RETURN GRILLE	3. FINISH TO BE WHITE UNLESS OTHERWISE SPECIFIED. COORDINATE AND VERIFY ALL FINISHES WITH ARCHITECT.							
E	=	EXHAUST GRILLE	4. ALL SELECTIONS ARE BASED ON A MAXIMUM NC OF 25 UNLESS NOTED OTHERWISE.							
L	=	SLOT DIFFUSER	5. CONTRACTOR SHALL VERIFY ALL CEILING TYPES AND ASSOCIATED BORDER TYPES.							
M	=	LAMINAR FLOW SUPPLY DIFFUSER	6. MARKS USED MAY NOT BE IN SEQUENCE.							
C	=	SECURITY GRILLE	7. LOUVERED GRILLES TO HAVE FRONT BLADES PARALLEL TO LONG DIMENSION UNLESS WALL MOUNTED.							
U	=	FLOOR MOUNTED SUPPLY GRILLE	8. WALL MOUNTED LOUVERED GRILLES TO HAVE FRONT BLADES PARALLEL TO FLOOR.							

MARK	TYPE	IMAGE	BASED ON		MOUNT	PANEL SIZE (FACE SIZE)	MATERIAL	BLADE SPACING / SLOT WIDTH	DEFLECTION	COLOR	REMARKS
			MFR	MODEL							
SM	SUPPLY DIFFUSER		TITUS	TMS-AA	LAY-IN	24x24	ALUMINUM	--	--	WHITE	LOUVERED FACE
SN	SUPPLY DIFFUSER		TITUS	TMS-AA	SURFACE	12x12	ALUMINUM	--	--	WHITE	LOUVERED FACE
SO	SUPPLY DIFFUSER		TITUS	TMS-AA	SURFACE	24x24	ALUMINUM	--	--	WHITE	LOUVERED FACE
LSE	SLOT DIFFUSER		TITUS	TBDI-80	LAY-IN	48" WIDTH	ALUMINUM	1"	--	WHITE	SEE PLANS FOR SLOT QTY
RL	RETURN GRILLE		TITUS	45F	LAY-IN	24x12 (22x10)	ALUMINUM	--	45°	WHITE	--
RM	RETURN GRILLE		TITUS	45F	LAY-IN	24x24 (22x22)	ALUMINUM	--	45°	WHITE	--
RN	RETURN GRILLE		TITUS	45F	SURFACE	12x12 (10x10)	ALUMINUM	--	45°	WHITE	--
RP	RETURN GRILLE		TITUS	45F	SURFACE	24x24 (22x22)	ALUMINUM	--	45°	WHITE	--
EM	EXHAUST GRILLE		TITUS	45F	LAY-IN	24x24 (22x22)	ALUMINUM	--	45°	WHITE	--
EN	EXHAUST GRILLE		TITUS	45F	SURFACE	12x12 (10x10)	ALUMINUM	--	45°	WHITE	--
EP	EXHAUST GRILLE		TITUS	45F	SURFACE	24x24 (22x22)	ALUMINUM	--	45°	WHITE	--

TERMINAL UNIT SCHEDULE

TERMINAL UNIT SCHEDULE																										
REMARKS:																										
1. ALL TERMINAL UNITS SHALL BE PROVIDED WITH FLOW-RING SERVICE 'T'.																										
2. ALL TERMINAL UNITS FOR USE IN HEALTHCARE APPLICATIONS SHALL BE PROVIDED WITH FIBER FREE STERILCOIL LINER. UNLESS INDICATED OTHERWISE.																										
3. ALL ELECTRIC TERMINAL UNITS SHALL BE PROVIDED WITH INDEPENDENT DISCONNECT SWITCH AND FUSE BLOCK BY EQUIPMENT MANUFACTURER.																										
MARK	BASED ON		UNIT SIZE	INLET SIZE (INCH)	PRIMARY AIRFLOW		OP SP (IN WC)	MAX NC RAD	HEATING COIL											ELEC		LINER TYPE	REMARKS			
	MFR	MODEL			MAX (CFM)	MIN (CFM)			AIR			HOT WATER COIL								VOLT	PHASE					
									CFM	EAT (°F)	LAT (°F)	CAP. (MBH)	EWT (°F)	LWT (°F)	APD (IN WG)	FLOW (GPM)	WPD (FT H2O)	ROWS	FPI					S & R RUNOUT SIZE (INCH)		
EXVAV-7-01	TUTTLE & BAILEY	RRV	10	10"	975	975	1	30	0	0	0	0	0	0	0	0	0	0	0	0	0	120	1	STERILOIL	1	
EXVAV-7-02	TUTTLE & BAILEY	RRV	10	10"	975	975	1	30	0	0	0	0	0	0	0	0	0	0	0	0	0	0	120	1	STERILOIL	1
EXVAV-7-03	TUTTLE & BAILEY	RRV	10	10"	975	975	1	30	0	0	0	0	0	0	0	0	0	0	0	0	0	0	120	1	STERILOIL	1
EXVAV-7-04	TUTTLE & BAILEY	RRV	10	10"	975	975	1	30	0	0	0	0	0	0	0	0	0	0	0	0	0	0	120	1	STERILOIL	1
VAV-7-01	TITUS	DESV	6	6"	350	105	1	30	175	55	90	6	140	120	0.21	0.6	0.12	2	10	3/4"	120	1	STERILOIL	1		
VAV-7-02	TITUS	DESV	6	6"	350	105	1	30	175	55	90	6	140	120	0.21	0.6	0.12	2	10	3/4"	120	1	STERILOIL	1		
VAV-7-03	TITUS	DESV	6	6"	350	105	1	30	175	55	90	6	140	120	0.21	0.6	0.12	2	10	3/4"	120	1	STERILOIL	1		
VAV-7-04	TITUS	DESV	6	6"	350	105	1	30	175	55	90	6	140	120	0.21	0.6	0.12	2	10	3/4"	120	1	STERILOIL	1		
VAV-7-05	TITUS	DESV	6	6"	350	105	1	30	175	55	90	6	140	120	0.21	0.6	0.12	2	10	3/4"	120	1	STERILOIL	1		
VAV-7-06	TITUS	DESV	6	6"	350	105	1	30	175	55	90	6	140	120	0.21	0.6	0.12	2	10	3/4"	120	1	STERILOIL	1		
VAV-7-07	TITUS	DESV	6	6"	350	105	1	30	175	55	90	6	140	120	0.21	0.6	0.12	2	10	3/4"	120	1	STERILOIL	1		
VAV-7-08	TITUS	DESV	6	6"	350	105	1	30	175	55	90	6	140	120	0.21	0.6	0.12	2	10	3/4"	120	1	STERILOIL	1		
VAV-7-09	TITUS	DESV	5	5"	200	60	1	30	100	55	90	3.4	140	120	0.08	0.5	0.12	2	10	3/4"	120	1	STERILOIL	1		
VAV-7-10	TITUS	DESV	5	5"	200	60	1	30	100	55	90	3.4	140	120	0.08	0.5	0.12	2	10	3/4"	120	1	STERILOIL	1		
VAV-7-11	TITUS	DESV	6	6"	350	105	1	30	175	55	90	6	140	120	0.21	0.6	0.12	2	10	3/4"	120	1	STERILOIL	1		
VAV-7-12	TITUS	DESV	6	6"	400	120	1	30	200	55	90	6.8	140	120	0.26	0.7	0.12	2	10	3/4"	120	1	STERILOIL	1		
VAV-7-13	TITUS	DESV	16	16"	2225	668	1	30	1113	55	90	38	140	120	0.4	3.8	1.46	2	10	1"	120	1	STERILOIL	1		
VAV-7-14	TITUS	DESV	8	8"	475	143	1	30	238	55	90	8.1	140	120	0.23	0.8	0.17	2	10	3/4"	120	1	STERILOIL	1		
VAV-7-15	TITUS	DESV	8	8"	475	143	1	30	238	55	90	8.1	140	120	0.23	0.8	0.17	2	10	3/4"	120	1	STERILOIL	1		
VAV-7-16	TITUS	DESV	9	9"	775	233	1	30	388	55	90	13.2	140	120	0.27	1.3	0.47	2	10	3/4"	120	1	STERILOIL	1		
VAV-7-17	TITUS	DESV	9	9"	775	233	1	30	388	55	90	13.2	140	120	0.27	1.3	0.47	2	10	3/4"	120	1	STERILOIL	1		
VAV-7-18	TITUS	DESV	8	8"	450	135	1	30	225	55	90	7.7	140	120	0.23	0.8	0.17	2	10	3/4"	120	1	STERILOIL	1		
VAV-7-19	TITUS	DESV	6	6"	350	105	1	30	175	55	90	6	140	120	0.21	0.6	0.12	2	10	3/4"	120	1	STERILOIL	1		
VAV-7-20	TITUS	DESV	6	6"	275	83	1	30	138	55	90	4.7	140	120	0.16	0.5	0.12	2	10	3/4"	120	1	STERILOIL	1		
VAV-7-21	TITUS	DESV	8	8"	425	128	1	30	213	55	90	7.3	140	120	0.23	0.7	0.17	2	10	3/4"	120	1	STERILOIL	1		
VAV-7-22	TITUS	DESV	8	8"	425	128	1	30	213	55	90	7.3	140	120	0.23	0.7	0.17	2	10	3/4"	120	1	STERILOIL	1		
VAV-7-23	TITUS	DESV	8	8"	425	128	1	30	213	55	90	7.3	140	120	0.23	0.7	0.17	2	10	3/4"	120	1	STERILOIL	1		
VAV-7-24	TITUS	DESV	8	8"	425	128	1	30	213	55	90	7.3	140	120	0.23	0.7	0.17	2	10	3/4"	120	1	STERILOIL	1		
VAV-7-25	TITUS	DESV	8	8"	425	128	1	30	213	55	90	7.3	140	120	0.23	0.7	0.17	2	10	3/4"	120	1	STERILOIL	1		
VAV-7-26	TITUS	DESV	8	8"	425	128	1	30	213	55	90	7.3	140	120	0.23	0.7	0.17	2	10	3/4"	120	1	STERILOIL	1		
VAV-7-27	TITUS	DESV	8	8"	425	128	1	30	213	55	90	7.3	140	120	0.23	0.7	0.17	2	10	3/4"	120	1	STERILOIL	1		
VAV-7-28	TITUS	DESV	8	8"	425	128	1	30	213	55	90	7.3	140	120	0.23	0.7	0.17	2	10	3/4"	120	1	STERILOIL	1		
VAV-7-29	TITUS	DESV	8	8"	425	128	1	30	213	55	90	7.3	140	120	0.23	0.7	0.17	2	10	3/4"	120	1	STERILOIL	1		
VAV-7-30	TITUS	DESV	8	8"	425	128	1	30	213	55	90	7.3	140	120	0.23	0.7	0.17	2	10	3/4"	120	1	STERILOIL	1		
VAV-7-31	TITUS	DESV	6	6"	400	120	1	30	200	55	90	6.8	140	120	0.26	0.7	0.12	2	10	3/4"	120	1	STERILOIL	1		
VAV-7-32	TITUS	DESV	6	6"	400	120	1	30	200	55	90	6.8	140	120	0.26	0.7	0.12	2	10	3/4"	120	1	STERILOIL	1		
VAV-7-33	TITUS	DESV	6	6"	400	120	1	30	200	55	90	6.8	140	120	0.26	0.7	0.12	2	10	3/4"	120	1	STERILOIL	1		
VAV-7-34	TITUS	DESV	6	6"	400	120	1	30	200	55	90	6.8	140	120	0.26	0.7	0.12	2	10	3/4"	120	1	STERILOIL	1		
VAV-7-35	TITUS	DESV	8	8"	450	135	1	30	225	55	90	7.7	140	120	0.23	0.8	0.17	2	10	3/4"	120	1	STERILOIL	1		
VAV-7-36	TITUS	DESV	8	8"	500	150	1	30	250	55	90	8.5	140	120	0.23	0.9	0.17	2	10	3/4"	120	1	STERILOIL	1		
VAV-7-37	TITUS	DESV	8	8"	475	143	1	30	238	55	90	8.1	140	120	0.23	0.8	0.17	2	10	3/4"	120	1	STERILOIL	1		
VAV-7-38	TITUS	DESV	8	8"	675	203	1	30	338	55	90	11.5	140	120	0.41	1.2	1.4	2	10	3/4"	120	1	STERILOIL	1		
VAV-7-39	TITUS	DESV	8	8"	450	135	1	30	225	55	90	7.7	140	120	0.23	0.8	0.17	2	10	3/4"	120	1	STERILOIL	1		
VAV-7-40	TITUS	DESV	6	6"	400	120	1	30	200	55	90	6.8	140	120	0.26	0.7	0.12	2	10	3/4"	120	1	STERILOIL	1		
VAV-7-41	TITUS	DESV	8	8"	700	210	1	30	350	55	90	12	140	120	0.41	1.2	1.4	2	10	3/4"	120	1	STERILOIL	1		
VAV-7-42	TITUS	DESV	8	8"	700	210	1	30	350	55	90	12	140	120	0.41	1.2	1.4	2	10	3/4"	120	1	STERILOIL	1		
VAV-7-43	TITUS	DESV	5	5"	225	68	1	30	113	55	90	3.8	140	120	0.12	0.5	0.12	2	10	3/4"	120	1	STERILOIL	1		
VAV-7-44	TITUS	DESV	9	9"	800	240	1	30	400	55	90	13.7	140	120	0.27	1.4	0.47	2	10	3/4"	120	1	STERILOIL	1		
VAV-7-48	TITUS	DESV	6	6"	325	98	1	30	163	55	90	5.6	140	120	0.21	0.6	0.12</									