

ADDENDUM NO: 01
PROJECT NAME: A New Baseball/Softball Practice Facility
Huntsville High School
PROJECT ADDRESS: Huntsville, AR
PROJECT NO: 2430

DATE: 12.20.2024
HIGHT JACKSON ASSOCIATES
ROGERS, AR
ARCHITECTS AND PLANNERS

Contractor shall attach this and other addenda to the specifications and they shall be considered a part thereof. Where changes are required by this addendum, they shall nullify any conflicting specifications as may be affected.

SPECIFICATIONS

- Item No. 1: **Refer to Specifications Section 32 11 16 Crushed Stone Base, paragraph 3.1 Base Course:**
- a) Change Gravel Drive Areas to Heavy Duty Gravel Drive Areas: 12” base course
 - b) Delete heavy duty base course.
 - c) Change light duty base course to Light Duty Gravel Drive and Parking: 8” thick base course.
- Item No. 2: **Refer to Specifications Section 32 12 16 Asphaltic Paving:**
- a) Delete Section in its entirety.

CIVIL

- Item No. 1: **Refer to attached, revised Civil Sheets C1 through C9:**
- a) See revised items clouded on the attached Civil drawings.
 - b) Delete the parking along the east side of the existing parking lot.
 - c) Delete the heavy duty asphalt paving on the access drive from the existing parking lot to the building. Provide only 12” of gravel as specified.
 - d) Add gravel parking as shown on the east side of the building.
 - e) See other notes and items shown clouded.

ARCHITECTURAL

No Items

STRUCTURAL

No Items

PLUMBING

No Items

MECHANICAL

No Items

ELECTRICAL

No Items

END OF ADDENDUM NO. 01

-2-

Addendum No. 01

Huntsville HS Indoor BB/SB Practice Facility



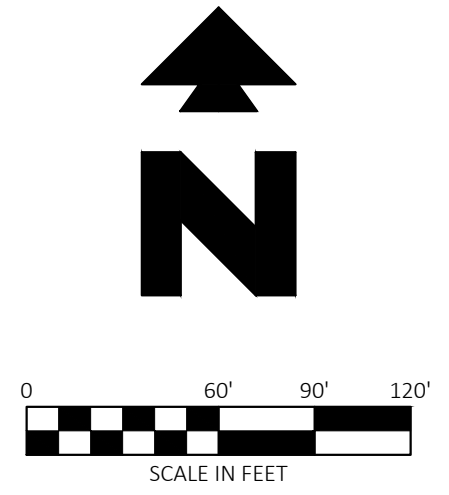
SITE BENCHMARK

BENCHMARK #1: 5/8" REBAR WITH CEI CAP LOCATED ON THE NORTH SIDE OF PARCELS 1449 AND 1448 APPROXIMATELY 66.2' WEST OF A STORM DRAINAGE MANHOLE AND APPROXIMATELY 76.1' NORTH OF A LIGHT POLE (2-LIGHTS) LOCATED IN THE PARKING LOT. ELEV = 1473.62'

BENCHMARK #2: 5/8" REBAR WITH CEI CAP LOCATED ON THE NORTH SIDE OF PARCELS 1449 AND 1448 APPROXIMATELY 30.5' EAST OF A STORM DRAINAGE MANHOLE AND APPROXIMATELY 305' WEST FROM ANOTHER STORM DRAINAGE MANHOLE. ELEV = 1454.40'

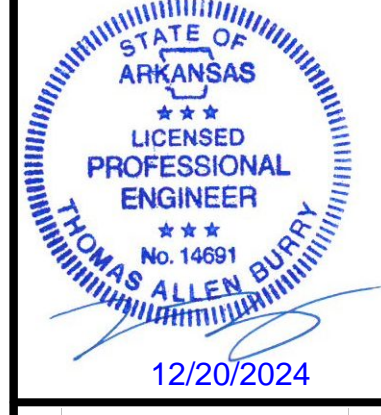
RECORD MONUMENT

A SURVEY FOR HUNTSVILLE SCHOOL DISTRICT
 520200062 (MADISON CO.)
 AN STATE SURVEY #2020006252570



811

Know what's below.
 Call before you dig.



EXISTING LEGEND

⊕	BENCHMARK (BM)	⊕	WATER VALVE
⊕	FENCE POST WOOD	⊕	FIRE DEPARTMENT CONNECTION
⊕	GAS METER	⊕	BOLLARD / GUARD POST
⊕	ELECTRIC METER	⊕	ROOF DRAIN
⊕	WATER METER	⊕	ELECTRIC VAULT
⊕	DRAINAGE MANHOLE (DMH)	⊕	TELEPHONE VAULT
⊕	GRATE INLET (GI)	⊕	WARNING FIBER OPTIC LINE SIGN
⊕	FIRE HYDRANT	⊕	TRAFFIC SIGN (TYPE OF SIGN)
⊕	SEWER MANHOLE (SMH)	⊕	TREE (DECIDUOUS)
⊕	SEWER CLEAN OUT	⊕	BOUNDARY LINE
⊕	GREASE TRAP	⊕	CENTERLINE OF CREEK
⊕	GUY WIRE / ANCHOR	⊕	GAS LINE
⊕	UTILITY POLE	⊕	OVERHEAD ELECTRIC LINE
⊕	LIGHT POLE (1 LAMP)	⊕	SANITARY SEWER LINE
⊕	LIGHT POLE (2 LAMPS)	⊕	STORM DRAINAGE PIPE
⊕	ELECTRIC RISER	⊕	WATER LINE
⊕	FIBER OPTIC RISER	⊕	UNDERGROUND TELEPHONE
⊕	TELEPHONE RISER		
⊕	UNKNOWN RISER		

DRAWING LOCATION - P:\34000\34228\0\DRAWINGS\DESIGN\WORKING\134128-DEMO.DWG - SAVED BY - ZHUMPHRIES

Hight Jackson ASSOCIATES

5201 W Village Parkway, Suite 300 | Rogers, Arkansas 72781 | (479) 464-4965 | www.hjarch.com

A BASEBALL/SOFTBALL PRACTICE FACILITY FOR
HUNTSVILLE HIGH SCHOOL
 HUNTSVILLE, AR

DRAWN BY:
MDT

CHECK BY:
DD

ISSUE DATE
12/20/2024

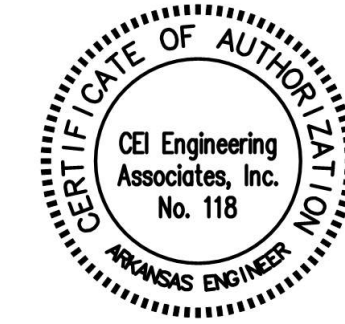
PROJECT NO.
2430

REVISION DATES
 1 12/20/2024



CEI Engineering Associates, Inc.
 No. 118

CEI ENGINEERING ASSOCIATES, INC.
 3030 LBJ FREEWAY, SUITE 920
 DALLAS, TX 75234
 PHONE: (972) 488-3737
 FAX: (972) 488-6732



EXISTING SITE PLAN

SHEET

C1

COPYRIGHT 2022
 THESE DRAWINGS AND SPECIFICATIONS ARE
 THE EXCLUSIVE PROPERTY OF
 HIGHT JACKSON ASSOCIATES, P.A.
 USE OR REPRODUCTION IS PROHIBITED
 WITHOUT WRITTEN CONSENT



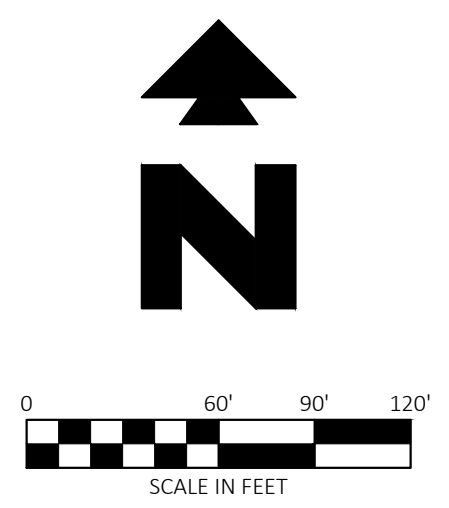
SITE BENCHMARK

BENCHMARK #1: 5/8" REBAR WITH CEI CAP LOCATED ON THE NORTH SIDE OF PARKING LOT APPROXIMATELY 66.2' WEST OF A STORM DRAINAGE MANHOLE AND APPROXIMATELY 76.1' NORTH OF A LIGHT POLE (2-LIGHTS) LOCATED IN THE PARKING LOT. ELEV = 1473.62'

BENCHMARK #2: 5/8" REBAR WITH CEI CAP LOCATED ON THE NORTH SIDE OF PARKING LOT APPROXIMATELY 30.5' EAST OF A STORM DRAINAGE MANHOLE AND APPROXIMATELY 305' WEST FROM ANOTHER STORM DRAINAGE MANHOLE. ELEV = 1454.46'

RECORD MONUMENT

A SURVEY FOR HUNTSVILLE SCHOOL DISTRICT
 520200062 (MADISON CO.)
 AN STATE SURVEY #202000625270



EXISTING LEGEND

⊕	BENCHMARK (BM)	⊕	WATER VALVE
⊕	FENCE POST WOOD	⊕	FIRE DEPARTMENT CONNECTION
⊕	GAS METER	⊕	BOLLARD / GUARD POST
⊕	ELECTRIC METER	⊕	ROOF DRAIN
⊕	WATER METER	⊕	ELECTRIC VAULT
⊕	DRAINAGE MANHOLE (DMH)	⊕	TELEPHONE VAULT
⊕	GRATE INLET (GI)	⊕	WARNING FIBER OPTIC LINE SIGN
⊕	FIRE HYDRANT	⊕	TRAFFIC SIGN (TYPE OF SIGN)
⊕	SEWER MANHOLE (SMH)	⊕	TREE (DECIDUOUS)
⊕	SEWER CLEAN OUT	⊕	BOUNDARY LINE
⊕	GREASE TRAP	⊕	CENTERLINE OF CREEK
⊕	GUY WIRE / ANCHOR	⊕	GAS LINE
⊕	UTILITY POLE	⊕	OVERHEAD ELECTRIC LINE
⊕	LIGHT POLE (1 LAMP)	⊕	SANITARY SEWER LINE
⊕	LIGHT POLE (2 LAMPS)	⊕	STORM DRAINAGE PIPE
⊕	ELECTRIC RISER	⊕	WATER LINE
⊕	FIBER OPTIC RISER	⊕	UNDERGROUND TELEPHONE
⊕	TELEPHONE RISER		
⊕	UNKNOWN RISER		

- GENERAL DEMOLITION NOTES**
- THE SITE WORK FOR THIS PROJECT SHALL MEET OR EXCEED THE "HUNTSVILLE STANDARD SITE WORK SPECIFICATIONS".
 - CONTRACTOR SHALL BE RESPONSIBLE FOR REMOVAL OF THE EXISTING STRUCTURES, RELATED UTILITIES, PAVING, UNDERGROUND STORAGE TANKS AND ANY OTHER EXISTING IMPROVEMENTS AS NOTED. SEE SITE WORK SPECIFICATIONS.
 - CONTRACTOR IS TO REMOVE AND DISPOSE OF ALL DEBRIS, RUBBISH AND OTHER MATERIALS RESULTING FROM PREVIOUS AND CURRENT DEMOLITION OPERATIONS. DISPOSAL WILL BE IN ACCORDANCE WITH ALL LOCAL, STATE AND/OR FEDERAL REGULATIONS GOVERNING SUCH OPERATIONS.
 - THE GENERAL CONTRACTOR SHALL TAKE ALL PRECAUTIONS NECESSARY TO AVOID PROPERTY DAMAGE TO ADJACENT PROPERTIES DURING THE CONSTRUCTION PHASES OF THIS PROJECT. THE CONTRACTOR WILL BE HELD SOLELY RESPONSIBLE FOR ANY DAMAGES TO THE ADJACENT PROPERTIES OCCURRING DURING THE CONSTRUCTION PHASES OF THIS PROJECT.
 - ENGINEER'S NOTICE TO CONTRACTOR
 THE CONTRACTOR IS SPECIFICALLY CAUTIONED THAT THE LOCATION AND/OR ELEVATION OF EXISTING UTILITIES AS SHOWN ON THESE PLANS IS BASED ON RECORDS OF THE VARIOUS UTILITY COMPANIES, AND WHERE POSSIBLE, MEASUREMENTS TAKEN IN THE FIELD. THE INFORMATION IS NOT TO BE RELIED ON AS BEING EXACT OR COMPLETE. THE CONTRACTOR MUST CALL THE APPROPRIATE UTILITY COMPANY AT LEAST 48 HOURS BEFORE ANY EXCAVATION TO REQUEST EXACT FIELD LOCATION OF UTILITIES. IT SHALL BE THE RESPONSIBILITY OF THE CONTRACTOR TO RELOCATE ALL EXISTING UTILITIES WHICH CONFLICT WITH THE PROPOSED IMPROVEMENTS SHOWN ON THE PLANS.

- DEMOLITION NOTES**
- 18A EXISTING TO BE REMOVED.
 - 18G CONTRACTOR TO SET NEW BENCHMARK(S) PRIOR TO REMOVAL OF THIS CONTROLLING BENCHMARK. BENCHMARK(S) SHALL BE SET USING CONTROLLING BENCHMARK AS VERTICAL CONTROL AND USING AN OBJECT THAT IS SIMILAR OR MORE STABLE IN NATURE.
 - 19A EXISTING TO REMAIN.
 - 51D PROTECT EXISTING STRUCTURES AND/OR PIPES DURING DEMOLITION AND CONSTRUCTION PHASES.

PROPOSED LEGEND

---	LIMITS OF DISTURBANCE
▨	LIMITS OF ASPHALT PAVING REMOVAL

Hight Jackson
 ASSOCIATES
 5201 W Village Parkway, Suite 3001 Rogers, Arkansas 72768 | (479) 464-4965 | www.hjarch.com

A BASEBALL/SOFTBALL PRACTICE FACILITY FOR
HUNTSVILLE HIGH SCHOOL
 HUNTSVILLE, AR

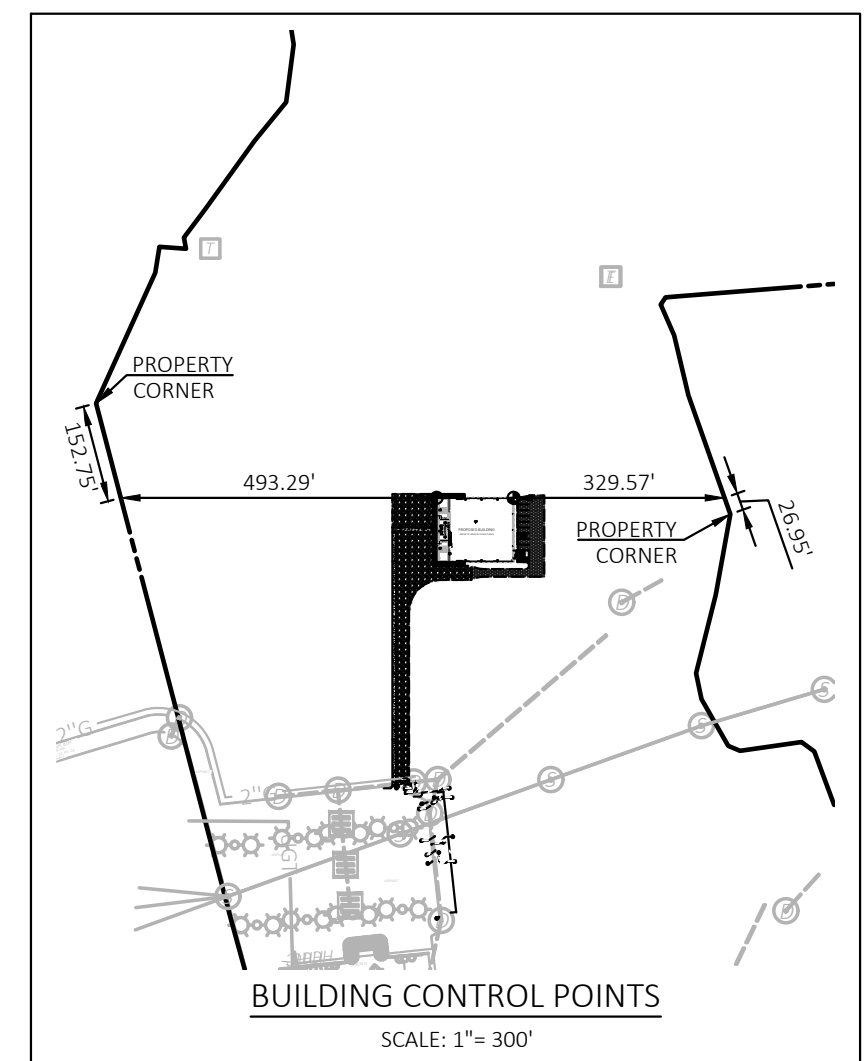
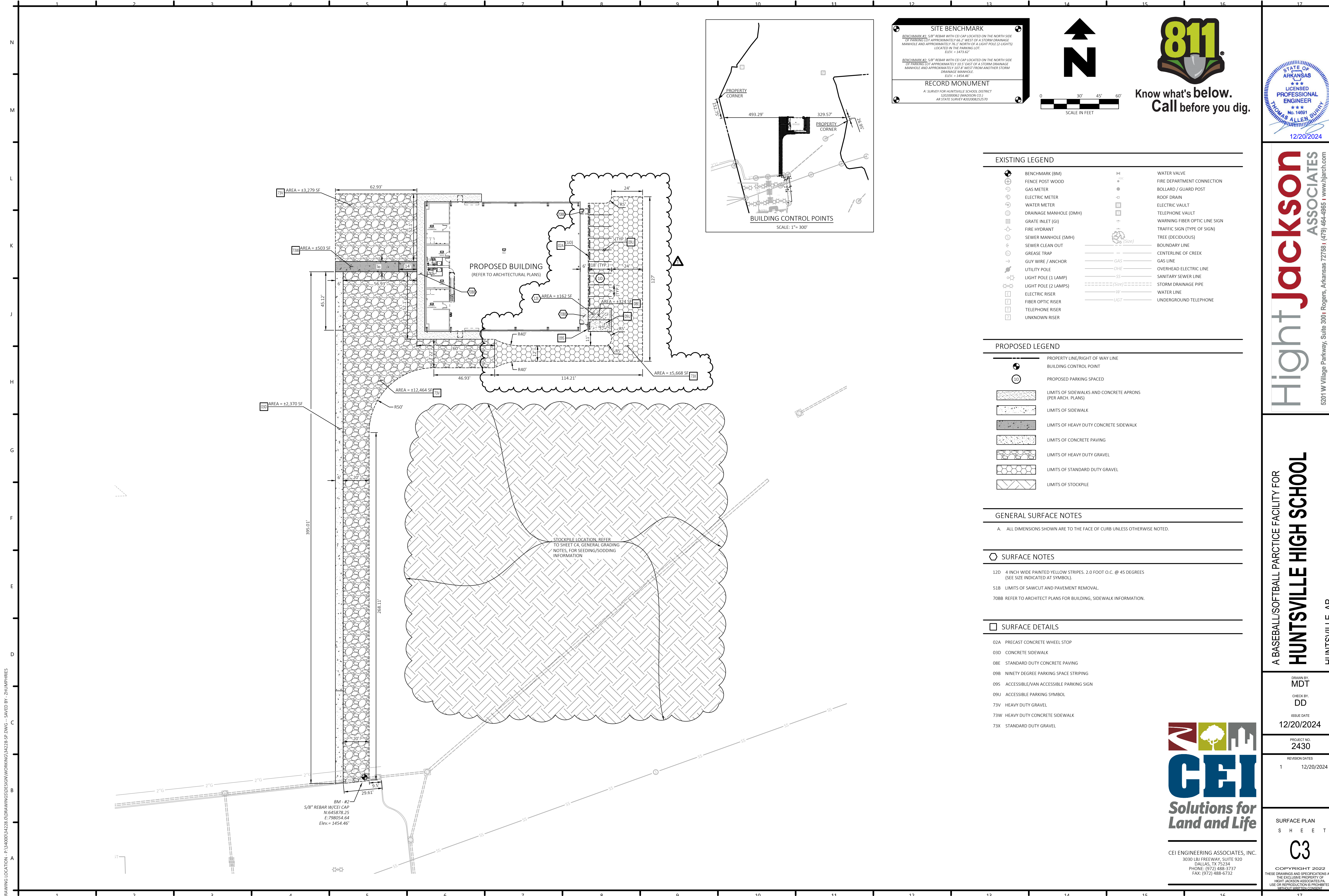
DRAWN BY:
MDT
 CHECK BY:
DD
 ISSUE DATE:
12/20/2024
 PROJECT NO:
2430
 REVISION DATES:
 1 12/20/2024



CEI ENGINEERING ASSOCIATES, INC.
 3030 LBJ FREEWAY, SUITE 920
 DALLAS, TX 75234
 PHONE: (972) 488-3737
 FAX: (972) 488-6732

DEMOLITION PLAN
 SHEET
C2
 COPYRIGHT 2022
 THESE DRAWINGS AND SPECIFICATIONS ARE THE EXCLUSIVE PROPERTY OF HIGHT JACKSON ASSOCIATES, P.A. USE OR REPRODUCTION IS PROHIBITED WITHOUT WRITTEN CONSENT.

DRAWING LOCATION - P:\34000\34228_0\DRAWINGS\DESIGN\WORKING\34228_DEMO.DWG - SAVED BY - ZHUMPHRIES

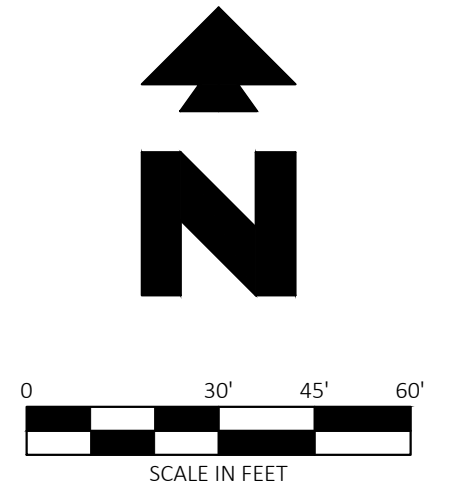


SITE BENCHMARK

BENCHMARK #1: 5/8" REBAR WITH CEI CAP LOCATED ON THE NORTH SIDE OF PARKING LOT APPROXIMATELY 66.2' WEST OF A STORM DRAINAGE MANHOLE AND APPROXIMATELY 76.1' NORTH OF A LIGHT POLE (2-LIGHTS) LOCATED IN THE PARKING LOT.
ELEV. = 1473.62'

BENCHMARK #2: 5/8" REBAR WITH CEI CAP LOCATED ON THE NORTH SIDE OF PARKING LOT APPROXIMATELY 30.5' EAST OF A STORM DRAINAGE MANHOLE AND APPROXIMATELY 305' WEST FROM ANOTHER STORM DRAINAGE MANHOLE.
ELEV. = 1454.46'

RECORD MONUMENT
A SURVEY FOR HUNTSVILLE SCHOOL DISTRICT
520200062 (MADISON CO.)
AR STATE SURVEY #20200062570



811

Know what's below.
Call before you dig.

STATE OF ARKANSAS
LICENSED PROFESSIONAL ENGINEER
No. 14691
THOMAS ALLEN BERRY
12/20/2024

EXISTING LEGEND

⊕	BENCHMARK (BM)	⊕	WATER VALVE
⊕	FENCE POST WOOD	⊕	FIRE DEPARTMENT CONNECTION
⊕	GAS METER	⊕	BOLLARD / GUARD POST
⊕	ELECTRIC METER	⊕	ROOF DRAIN
⊕	WATER METER	⊕	ELECTRIC VAULT
⊕	DRAINAGE MANHOLE (DMH)	⊕	TELEPHONE VAULT
⊕	GRATE INLET (GI)	⊕	WARNING FIBER OPTIC LINE SIGN
⊕	FIRE HYDRANT	⊕	TRAFFIC SIGN (TYPE OF SIGN)
⊕	SEWER MANHOLE (SMH)	⊕	TREE (DECIDUOUS)
⊕	SEWER CLEAN OUT	⊕	BOUNDARY LINE
⊕	GREASE TRAP	⊕	CENTERLINE OF CREEK
⊕	GUY WIRE / ANCHOR	⊕	GAS LINE
⊕	UTILITY POLE	⊕	OVERHEAD ELECTRIC LINE
⊕	LIGHT POLE (1 LAMP)	⊕	SANITARY SEWER LINE
⊕	LIGHT POLE (2 LAMPS)	⊕	STORM DRAINAGE PIPE
⊕	ELECTRIC RISER	⊕	WATER LINE
⊕	FIBER OPTIC RISER	⊕	UNDERGROUND TELEPHONE
⊕	TELEPHONE RISER		
⊕	UNKNOWN RISER		

PROPOSED LEGEND

---	PROPERTY LINE/RIGHT OF WAY LINE
⊕	BUILDING CONTROL POINT
⊕	PROPOSED PARKING SPACED
▨	LIMITS OF SIDEWALKS AND CONCRETE APRONS (PER ARCH. PLANS)
▨	LIMITS OF SIDEWALK
▨	LIMITS OF HEAVY DUTY CONCRETE SIDEWALK
▨	LIMITS OF CONCRETE PAVING
▨	LIMITS OF HEAVY DUTY GRAVEL
▨	LIMITS OF STANDARD DUTY GRAVEL
▨	LIMITS OF STOCKPILE

GENERAL SURFACE NOTES

A. ALL DIMENSIONS SHOWN ARE TO THE FACE OF CURB UNLESS OTHERWISE NOTED.

SURFACE NOTES

12D 4 INCH WIDE PAINTED YELLOW STRIPES, 2.0 FOOT O.C. @ 45 DEGREES (SEE SIZE INDICATED AT SYMBOL).

51B LIMITS OF SAWCUT AND PAVEMENT REMOVAL.

70BB REFER TO ARCHITECT PLANS FOR BUILDING, SIDEWALK INFORMATION.

SURFACE DETAILS

02A	PRECAST CONCRETE WHEEL STOP
03D	CONCRETE SIDEWALK
08E	STANDARD DUTY CONCRETE PAVING
09B	NINETY DEGREE PARKING SPACE STRIPING
09S	ACCESSIBLE/VAN ACCESSIBLE PARKING SIGN
09U	ACCESSIBLE PARKING SYMBOL
73V	HEAVY DUTY GRAVEL
73W	HEAVY DUTY CONCRETE SIDEWALK
73X	STANDARD DUTY GRAVEL

Hight Jackson ASSOCIATES
5201 W Village Parkway, Suite 300 | Rogers, Arkansas 72768 | (479) 464-4965 | www.hjarch.com

A BASEBALL/SOFTBALL PRACTICE FACILITY FOR
HUNTSVILLE HIGH SCHOOL
HUNTSVILLE, AR

DRAWN BY: MDT
CHECK BY: DD
ISSUE DATE: 12/20/2024

PROJECT NO: 2430
REVISION DATES: 1 12/20/2024

SURFACE PLAN SHEET

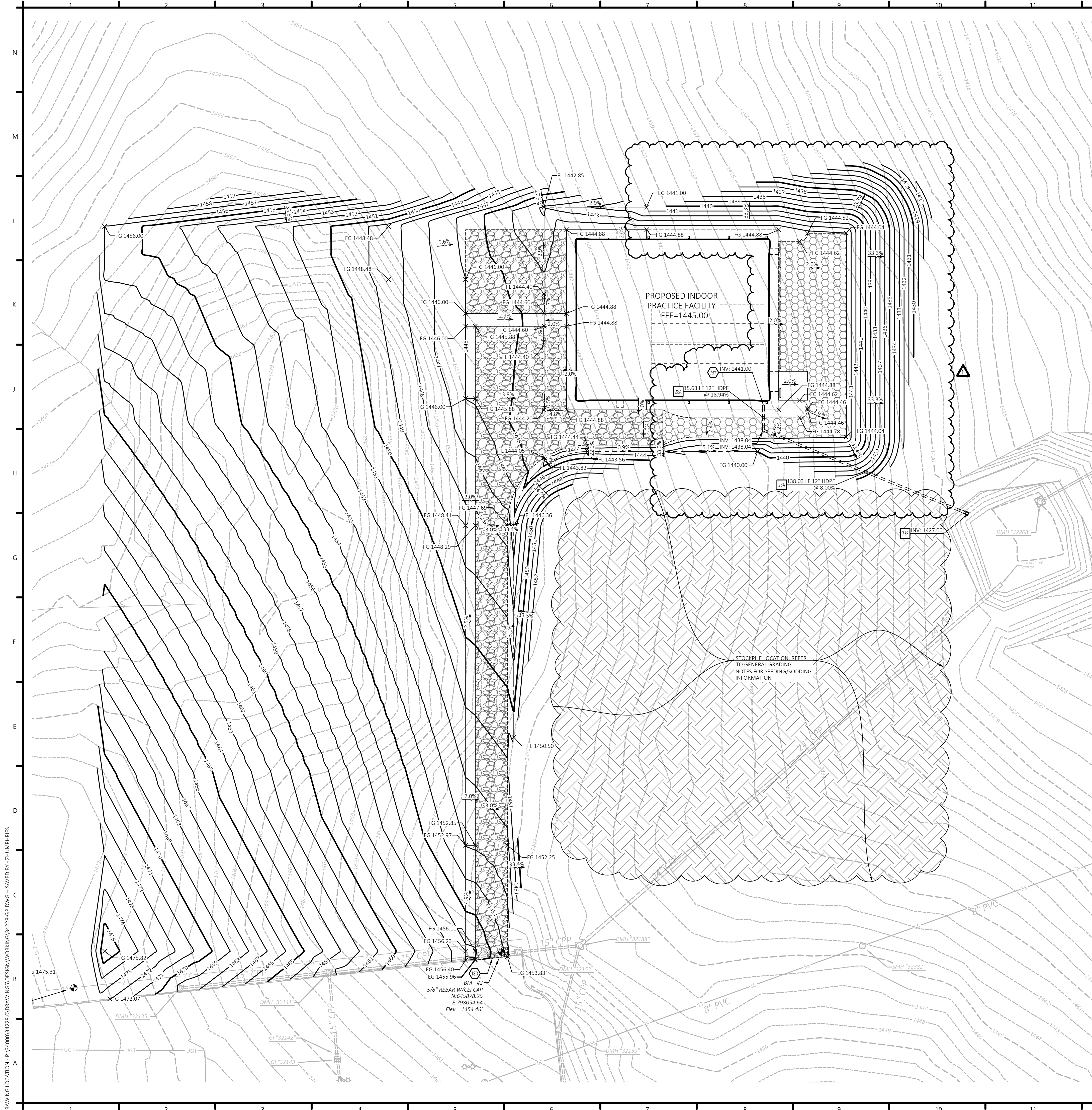
C3

COPYRIGHT 2022
THESE DRAWINGS AND SPECIFICATIONS ARE THE EXCLUSIVE PROPERTY OF HIGHT JACKSON ASSOCIATES, P.A. USE OR REPRODUCTION IS PROHIBITED WITHOUT WRITTEN CONSENT.

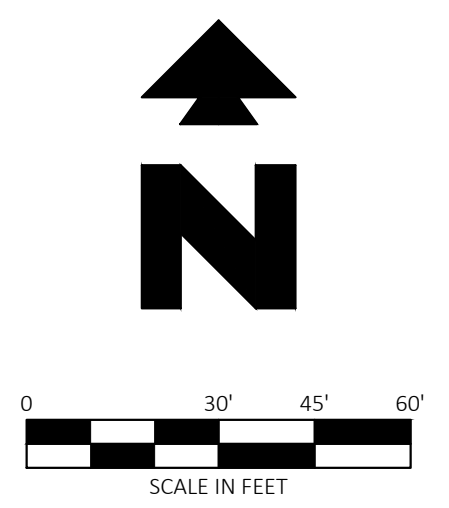


CEI ENGINEERING ASSOCIATES, INC.
3030 LBJ FREEWAY, SUITE 920
DALLAS, TX 75234
PHONE: (972) 488-3737
FAX: (972) 488-6732

DRAWING LOCATION: P:\34000\34228\0\DRAWINGS\DESIGN\WORKING\34228.SP.DWG - SAVED BY: ZHUMPHRIES



SITE BENCHMARK
 BENCHMARK #1: 5/8" REBAR WITH CEI CAP LOCATED ON THE NORTH SIDE OF PARCEL LOT APPROXIMATELY 60' WEST OF A STORM DRAINAGE MANHOLE AND APPROXIMATELY 76.1' NORTH OF A LIGHT POLE (2-LIGHTS) LOCATED IN THE PARKING LOT. ELEV. = 1473.67'
 BENCHMARK #2: 5/8" REBAR WITH CEI CAP LOCATED ON THE NORTH SIDE OF PARCEL LOT APPROXIMATELY 30.5' EAST OF A STORM DRAINAGE MANHOLE AND APPROXIMATELY 305' WEST FROM ANOTHER STORM DRAINAGE MANHOLE. ELEV. = 1454.46'
RECORD MONUMENT
 A SURVEY FOR HUNTSVILLE SCHOOL DISTRICT
 S20200062 (MADISON CO.)
 AR STATE SURVEY #202000625270



811
 Know what's below.
 Call before you dig.



EXISTING LEGEND

⊕	BENCHMARK (BM)	⊕	WATER VALVE
⊕	FENCE POST WOOD	⊕	FIRE DEPARTMENT CONNECTION
⊕	GAS METER	⊕	BOLLARD / GUARD POST
⊕	ELECTRIC METER	⊕	ROOF DRAIN
⊕	WATER METER	⊕	ELECTRIC VAULT
⊕	DRAINAGE MANHOLE (DMH)	⊕	TELEPHONE VAULT
⊕	GRATE INLET (GI)	⊕	WARNING FIBER OPTIC LINE SIGN
⊕	FIRE HYDRANT	⊕	TRAFFIC SIGN (TYPE OF SIGN)
⊕	SEWER MANHOLE (SMH)	⊕	TREE (DECIDUOUS)
⊕	SEWER CLEAN OUT	⊕	BOUNDARY LINE
⊕	GREASE TRAP	⊕	CENTERLINE OF CREEK
⊕	GUY WIRE / ANCHOR	⊕	GAS LINE
⊕	UTILITY POLE	⊕	OVERHEAD ELECTRIC LINE
⊕	LIGHT POLE (1 LAMP)	⊕	SANITARY SEWER LINE
⊕	LIGHT POLE (2 LAMPS)	⊕	STORM DRAINAGE PIPE
⊕	ELECTRIC RISER	⊕	WATER LINE
⊕	FIBER OPTIC RISER	⊕	UNDERGROUND TELEPHONE
⊕	TELEPHONE RISER		
⊕	UNKNOWN RISER		

PROPOSED LEGEND

---	PROPERTY LINE/RIGHT OF WAY LINE	x XX.XX	SPOT ELEVATIONS:
---	GRADE BREAK		EG = EXISTING GRADE
---	CONTOUR ELEVATIONS		FFE = FINISH FLOOR ELEVATION
---	STORM DRAIN		FG = FINISHED GRADE
			FL = FLOWLINE
			FS = FINISHED SIDEWALK GRADE

- GENERAL GRADING NOTES**
- PRIOR TO INSTALLATION OF STORM OR SANITARY SEWER, THE CONTRACTOR SHALL EXCAVATE, VERIFY, AND CALCULATE ALL CROSSINGS AND INFORM THE OWNER AND THE ENGINEER OF ANY CONFLICTS PRIOR TO CONSTRUCTION. THE ENGINEER WILL BE HELD HARMLESS IN THE EVENT THE ENGINEER IS NOT NOTIFIED OF DESIGN CONFLICTS.
 - ALL SLOPES AND AREAS DISTURBED BY CONSTRUCTION SHALL BE GRADED SMOOTH AND 4" OF TOPSOIL APPLIED. IF ADEQUATE TOPSOIL IS NOT AVAILABLE ON SITE, THE CONTRACTOR SHALL PROVIDE TOPSOIL, APPROVED BY THE OWNER, AS NEEDED. THE AREA SHALL THEN BE SEEDED, FERTILIZED, MULCHED, WATERED AND MAINTAINED UNTIL HARDY GRASS GROWTH IS ESTABLISHED IN ALL AREAS (SEE LANDSCAPE PLAN FOR SEED MIX AND PROPER APPLICATION RATE). ANY AREAS DISTURBED FOR ANY REASON PRIOR TO FINAL ACCEPTANCE OF THE PROJECT SHALL BE CORRECTED BY THE CONTRACTOR AT NO ADDITIONAL COST TO THE OWNER.
 - THE CONTRACTOR IS SPECIFICALLY CAUTIONED THAT THE LOCATION AND/OR ELEVATION OF EXISTING UTILITIES AS SHOWN ON THESE PLANS IS BASED ON RECORDS OF THE VARIOUS UTILITY COMPANIES, AND WHERE POSSIBLE, MEASUREMENTS TAKEN IN THE FIELD. THE INFORMATION IS NOT TO BE RELIED ON AS BEING EXACT OR COMPLETE. THE CONTRACTOR MUST CALL THE APPROPRIATE UTILITY COMPANY AT LEAST 48 HOURS BEFORE ANY EXCAVATION TO REQUEST EXACT FIELD LOCATION OF UTILITIES.
 - UNLESS OTHERWISE SHOWN, CALLED OUT OR SPECIFIED HEREON OR WITHIN THE SPECIFICATIONS: ALL STORM DRAIN PIPE BEDDINGS SHALL BE INSTALLED PER DETAIL 28A. ALL STORM DRAIN PIPES ARE MEASURED FROM CENTER OF STRUCTURES AND ENDS OF FLARED END SECTIONS.
 - FOR SLOPES 3:1 OR GREATER, USE BERMUDA SOD. HYDROSEED ALL OTHER DISTURBED AREAS WITH SEED MIX:

SEED DATE RANGE	SEE VARIETY (% BY WEIGHT)	WEIGHT / AC
APRIL TO SEPTEMBER	75% BERMUDA GRASS 25% TALL FESCUE GRASS	15LBS
OCTOBER TO MARCH	50% ANNUAL RYE GRASS 50% TALL FESCUE GRASS	15LBS

- GRADING NOTES**
- 1BD MATCH EXISTING PAVEMENT ELEVATIONS.
 - 73Y CONTRACTOR TO CONNECT INDOOR PRACTICE FIELD DRAINAGE SYSTEM TO PROPOSED STORM SEWER.
- GRADING DETAILS**
- 73F OUTLET STRUCTURE

CUT/FILL SUMMARY

AREA (SF)	CUT (CY)	FILL (CY)	NET (CY)
171,341.97	32,719.46	7,324.08	25,395.38 CUT



CEI ENGINEERING ASSOCIATES, INC.
 3030 LBJ FREEWAY, SUITE 920
 DALLAS, TX 75234
 PHONE: (972) 488-3737
 FAX: (972) 488-6732

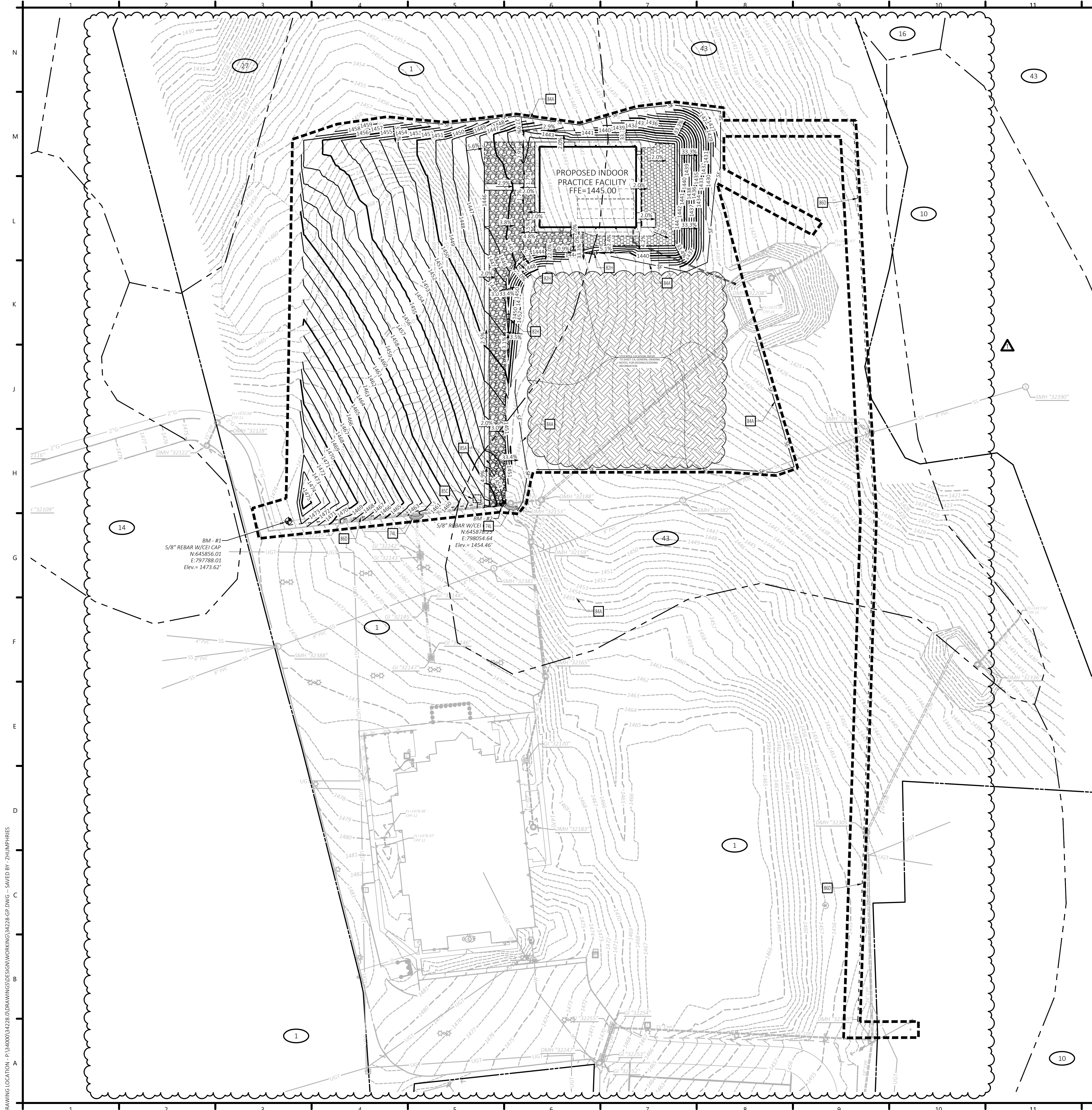
Hight Jackson
 ASSOCIATES
 5201 W Village Parkway, Suite 300 | Rogers, Arkansas 72768 | (479) 464-4965 | www.hjarch.com

A BASEBALL/SOFTBALL PRACTICE FACILITY FOR
HUNTSVILLE HIGH SCHOOL
 HUNTSVILLE, AR

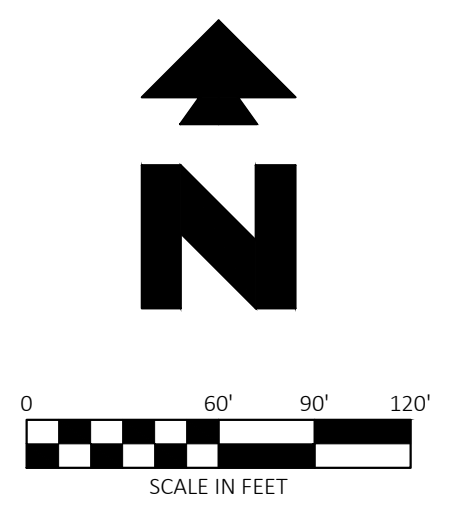
DRAWN BY:
MDT
 CHECK BY:
DD
 ISSUE DATE
12/20/2024
 PROJECT NO.
2430
 REVISION DATES
 1 12/20/2024

GRADING PLAN
 SHEET
C4
 COPYRIGHT 2022
 THESE DRAWINGS AND SPECIFICATIONS ARE THE EXCLUSIVE PROPERTY OF HIGHT JACKSON ASSOCIATES, P.A. USE OR REPRODUCTION IS PROHIBITED WITHOUT WRITTEN CONSENT.

DRAWING LOCATION: P:\34000\34228\0DRAWINGS\DESIGN\WORKING\1341228.GP.DWG - SAVED BY: ZHUMPHRIES



SITE BENCHMARK
 BENCHMARK #1: 5/8" REBAR WITH CEI CAP LOCATED ON THE NORTH SIDE OF PARKING LOT APPROXIMATELY 60' WEST OF A STORM DRAINAGE MANHOLE AND APPROXIMATELY 76.1' NORTH OF A LIGHT POLE (2-LIGHTS) LOCATED IN THE PARKING LOT. ELEV = 1473.62'
 BENCHMARK #2: 5/8" REBAR WITH CEI CAP LOCATED ON THE NORTH SIDE OF PARKING LOT APPROXIMATELY 30.5' EAST OF A STORM DRAINAGE MANHOLE AND APPROXIMATELY 305' WEST FROM ANOTHER STORM DRAINAGE MANHOLE. ELEV = 1454.46'
RECORD MONUMENT
 A SURVEY FOR HUNTSVILLE SCHOOL DISTRICT
 S20200062 (MADISON CO.)
 AR STATE SURVEY #20,000,62570



811
 Know what's below.
 Call before you dig.

STATE OF ARKANSAS
 LICENSED PROFESSIONAL ENGINEER
 No. 14621
 THOMAS ALLEN BERRY
 12/20/2024

EXISTING LEGEND

⊕	BENCHMARK (BM)	⊕	WATER VALVE
⊕	FENCE POST WOOD	⊕	FIRE DEPARTMENT CONNECTION
⊕	GAS METER	⊕	BOLLARD / GUARD POST
⊕	ELECTRIC METER	⊕	ROOF DRAIN
⊕	WATER METER	⊕	ELECTRIC VAULT
⊕	DRAINAGE MANHOLE (DMH)	⊕	TELEPHONE VAULT
⊕	GRATE INLET (GI)	⊕	WARNING FIBER OPTIC LINE SIGN
⊕	FIRE HYDRANT	⊕	TRAFFIC SIGN (TYPE OF SIGN)
⊕	SEWER MANHOLE (SMH)	⊕	TREE (DECIDUOUS)
⊕	SEWER CLEAN OUT	⊕	BOUNDARY LINE
⊕	GREASE TRAP	⊕	CENTERLINE OF CREEK
⊕	GUY WIRE / ANCHOR	⊕	GAS LINE
⊕	UTILITY POLE	⊕	OVERHEAD ELECTRIC LINE
⊕	LIGHT POLE (1 LAMP)	⊕	SANITARY SEWER LINE
⊕	LIGHT POLE (2 LAMPS)	⊕	STORM DRAINAGE PIPE
⊕	ELECTRIC RISER	⊕	WATER LINE
⊕	FIBER OPTIC RISER	⊕	UNDERGROUND TELEPHONE
⊕	TELEPHONE RISER		
⊕	UNKNOWN RISER		

PROPOSED LEGEND

---	PROPERTY LINE/RIGHT OF WAY LINE	⊕	CONCRETE WASHOUT
---	LIMITS OF DISTURBANCE	⊕	CONSTRUCTION ENTRANCE
---	CONTOUR ELEVATIONS	⊕	SWP-CI (BIG RED)
---	GRADE BREAK		
---	FLOWLINE		
---	STORM DRAIN		
---	SILT FENCE		
---	STRAW WATTLE		
---	ROCK CHECK DAM		

GENERAL EROSION NOTES
 A. SEE SHEET "EROSION CONTROL NOTES" FOR EROSION CONTROL NOTES AND DETAILS.

SOIL TYPES

1	ALLEN LOAM, 3-8% SLOPES
10	CLEORA FINE SANDY LOAM, OCCASIONALLY FLOODED, 0-3% SLOPES
14	ENDERS STONY LOAM, 3-15% SLOPES
16	ENDERS-LEESBURG COMPLEX, 20-40% SLOPES
27	MOUNTAINBURG STONY LOAM, 3-20% SLOPES
43	STEPROCK GRAVELLY LOAM, 3-8% SLOPES
---	APPROXIMATE LIMITS OF SOIL TYPE

AREA OF DISTURBANCE = 7.00 ACRES (304,920 S.F.)

EROSION DETAILS

74L	BIG RED
82H	ROCK CHECK DAM
84A	TEMPORARY SILT FENCE
85A	TEMPORARY STONE CONSTRUCTION ENTRANCE
85C	TEMPORARY CONCRETE WASH OUT
86D	STRAW WATTLE



CEI ENGINEERING ASSOCIATES, INC.
 3030 LBJ FREEWAY, SUITE 920
 DALLAS, TX 75234
 PHONE: (972) 488-3737
 FAX: (972) 488-6732

Hight Jackson
 ASSOCIATES
 5201 W Village Parkway, Suite 300 | Rogers, Arkansas 72781 | (479) 464-4965 | www.hjarch.com

A BASEBALL/SOFTBALL PRACTICE FACILITY FOR
HUNTSVILLE HIGH SCHOOL
 HUNTSVILLE, AR

DRAWN BY:
MDT
 CHECK BY:
DD
 ISSUE DATE
12/20/2024

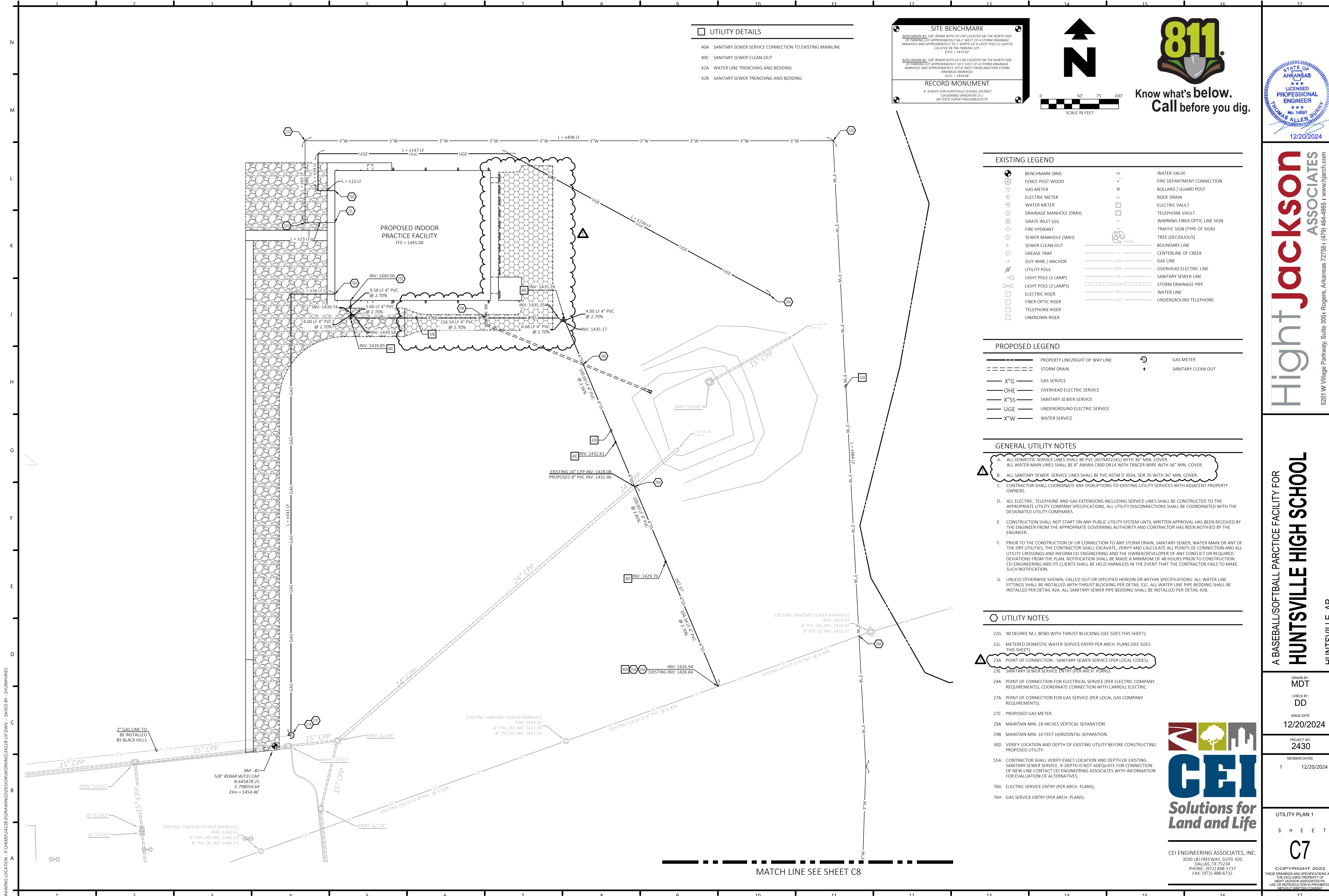
PROJECT NO:
2430
 REVISION DATES
 1 12/20/2024

EROSION CONTROL PLAN

SHEET
C5

COPYRIGHT 2022
 THESE DRAWINGS AND SPECIFICATIONS ARE THE EXCLUSIVE PROPERTY OF HIGHT JACKSON ASSOCIATES, P.A. USE OR REPRODUCTION IS PROHIBITED WITHOUT WRITTEN CONSENT.

DRAWING LOCATION - P:\34000\34228_0\DRAWINGS\DESIGN\WORKING\34228-GP.DWG - SAVED BY - ZHUMPHRIES



UTILITY DETAILS

- 40A SANITARY SEWER SERVICE CONNECTION TO EXISTING MAINLINE
- 40C SANITARY SEWER CLEAN-OUT
- 42A WATER LINE TRENCHING AND BEDDING
- 42B SANITARY SEWER TRENCHING AND BEDDING

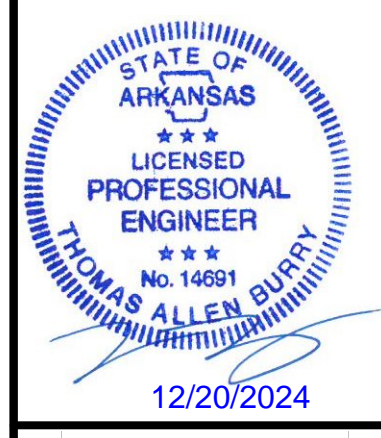
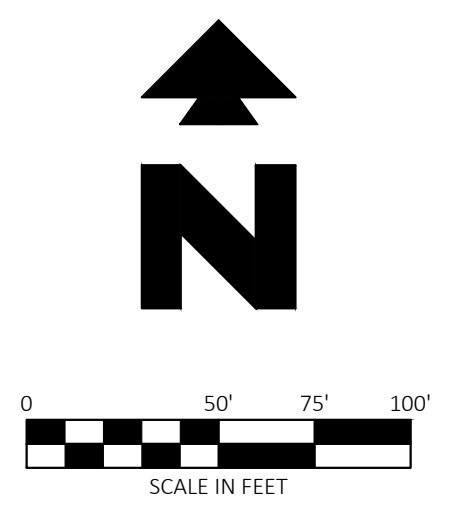
SITE BENCHMARK

BENCHMARK #1: 5/8" REBAR WITH CEI CAP LOCATED ON THE NORTH SIDE OF PARKING LOT APPROXIMATELY 66.2' WEST OF A STORM DRAINAGE MANHOLE AND APPROXIMATELY 76.1' NORTH OF A LIGHT POLE (2-LIGHTS) LOCATED IN THE PARKING LOT. ELEV. = 1473.67'

BENCHMARK #2: 5/8" REBAR WITH CEI CAP LOCATED ON THE NORTH SIDE OF PARKING LOT APPROXIMATELY 30.5' EAST OF A STORM DRAINAGE MANHOLE AND APPROXIMATELY 305' WEST FROM ANOTHER STORM DRAINAGE MANHOLE. ELEV. = 1454.46'

RECORD MONUMENT

A SURVEY FOR HUNTSVILLE SCHOOL DISTRICT
 520200062 (MADISON CO.)
 AN STATE SURVEY #20,000,025,270



EXISTING LEGEND

⊕	BENCHMARK (BM)	⊕	WATER VALVE
⊙	FENCE POST WOOD	⊕	FIRE DEPARTMENT CONNECTION
⊙	GAS METER	⊕	BOLLARD / GUARD POST
⊙	ELECTRIC METER	⊕	ROOF DRAIN
⊙	WATER METER	⊕	ELECTRIC VAULT
⊙	DRAINAGE MANHOLE (DMH)	⊕	TELEPHONE VAULT
⊙	GRATE INLET (GI)	⊕	WARNING FIBER OPTIC LINE SIGN
⊙	FIRE HYDRANT	⊕	TRAFFIC SIGN (TYPE OF SIGN)
⊙	SEWER MANHOLE (SMH)	⊕	TREE (DECIDUOUS)
⊙	SEWER CLEAN OUT	⊕	BOUNDARY LINE
⊙	GREASE TRAP	⊕	CENTERLINE OF CREEK
⊙	GUY WIRE / ANCHOR	⊕	GAS LINE
⊙	UTILITY POLE	⊕	OVERHEAD ELECTRIC LINE
⊙	LIGHT POLE (1 LAMP)	⊕	SANITARY SEWER LINE
⊙	LIGHT POLE (2 LAMPS)	⊕	STORM DRAINAGE PIPE
⊙	ELECTRIC RISER	⊕	WATER LINE
⊙	FIBER OPTIC RISER	⊕	UNDERGROUND TELEPHONE
⊙	TELEPHONE RISER		
⊙	UNKNOWN RISER		

PROPOSED LEGEND

---	PROPERTY LINE/RIGHT OF WAY LINE	⊕	GAS METER
---	STORM DRAIN	⊕	SANITARY CLEAN OUT
X"G	GAS SERVICE		
OHE	OVERHEAD ELECTRIC SERVICE		
X"SS	SANITARY SEWER SERVICE		
UGE	UNDERGROUND ELECTRIC SERVICE		
X"W	WATER SERVICE		

GENERAL UTILITY NOTES

- ALL DOMESTIC SERVICE LINES SHALL BE PVC (ASTM D2241) WITH 36" MIN. COVER. ALL WATER MAIN LINES SHALL BE 8" AWWA C900 DR14 WITH TRACER WIRE WITH 36" MIN. COVER.
- ALL SANITARY SEWER SERVICE LINES SHALL BE PVC ASTM D 3034, SDR 35 WITH 36" MIN. COVER.
- CONTRACTOR SHALL COORDINATE ANY DISRUPTIONS TO EXISTING UTILITY SERVICES WITH ADJACENT PROPERTY OWNERS.
- ALL ELECTRIC, TELEPHONE AND GAS EXTENSIONS INCLUDING SERVICE LINES SHALL BE CONSTRUCTED TO THE APPROPRIATE UTILITY COMPANY SPECIFICATIONS. ALL UTILITY DISCONNECTIONS SHALL BE COORDINATED WITH THE DESIGNATED UTILITY COMPANIES.
- CONSTRUCTION SHALL NOT START ON ANY PUBLIC UTILITY SYSTEM UNTIL WRITTEN APPROVAL HAS BEEN RECEIVED BY THE ENGINEER FROM THE APPROPRIATE GOVERNING AUTHORITY AND CONTRACTOR HAS BEEN NOTIFIED BY THE ENGINEER.
- PRIOR TO THE CONSTRUCTION OF OR CONNECTION TO ANY STORM DRAIN, SANITARY SEWER, WATER MAIN OR ANY OF THE DRY UTILITIES, THE CONTRACTOR SHALL EXCAVATE, VERIFY AND CALCULATE ALL POINTS OF CONNECTION AND ALL UTILITY CROSSINGS AND INFORM CEI ENGINEERING AND THE OWNER/DEVELOPER OF ANY CONFLICT OR REQUIRED DEVIATIONS FROM THE PLAN. NOTIFICATION SHALL BE MADE A MINIMUM OF 48 HOURS PRIOR TO CONSTRUCTION. CEI ENGINEERING AND ITS CLIENTS SHALL BE HELD HARMLESS IN THE EVENT THAT THE CONTRACTOR FAILS TO MAKE SUCH NOTIFICATION.
- UNLESS OTHERWISE SHOWN, CALLED OUT OR SPECIFIED HEREON OR WITHIN SPECIFICATIONS, ALL WATER LINE FITTINGS SHALL BE INSTALLED WITH THRUST BLOCKING PER DETAIL 31C. ALL WATER LINE PIPE BEDDING SHALL BE INSTALLED PER DETAIL 42A. ALL SANITARY SEWER PIPE BEDDING SHALL BE INSTALLED PER DETAIL 42B.

UTILITY NOTES

- 90 DEGREE M.J. BEND WITH THRUST BLOCKING (SEE SIZES THIS SHEET).
- METERED DOMESTIC WATER SERVICE ENTRY PER ARCH. PLANS (SEE SIZES THIS SHEET).
- POINT OF CONNECTION - SANITARY SEWER SERVICE (PER LOCAL CODES).
- SANITARY SEWER SERVICE ENTRY (PER ARCH. PLANS).
- POINT OF CONNECTION FOR ELECTRICAL SERVICE (PER ELECTRIC COMPANY REQUIREMENTS). COORDINATE CONNECTION WITH CARROLL ELECTRIC.
- POINT OF CONNECTION FOR GAS SERVICE (PER LOCAL GAS COMPANY REQUIREMENTS).
- PROPOSED GAS METER.
- MAINTAIN MIN. 18 INCHES VERTICAL SEPARATION.
- MAINTAIN MIN. 10 FEET HORIZONTAL SEPARATION.
- VERIFY LOCATION AND DEPTH OF EXISTING UTILITY BEFORE CONSTRUCTING PROPOSED UTILITY.
- CONTRACTOR SHALL VERIFY EXACT LOCATION AND DEPTH OF EXISTING SANITARY SEWER SERVICE. IF DEPTH IS NOT ADEQUATE FOR CONNECTION OF NEW LINE CONTACT CEI ENGINEERING ASSOCIATES WITH INFORMATION FOR EVALUATION OF ALTERNATIVES.
- ELECTRIC SERVICE ENTRY (PER ARCH. PLANS).
- GAS SERVICE ENTRY (PER ARCH. PLANS).

Hight Jackson ASSOCIATES

5201 W Village Parkway, Suite 300 | Rogers, Arkansas 72768 | (479) 464-4965 | www.hjarch.com

A BASEBALL/SOFTBALL PRACTICE FACILITY FOR
HUNTSVILLE HIGH SCHOOL
 HUNTSVILLE, AR

DRAWN BY: MDT
 CHECK BY: DD
 ISSUE DATE: 12/20/2024
 PROJECT NO: 2430
 REVISION DATES: 1 12/20/2024
 UTILITY PLAN 1
 SHEET
 C7
 COPYRIGHT 2022 THESE DRAWINGS AND SPECIFICATIONS ARE THE EXCLUSIVE PROPERTY OF HIGHT JACKSON ASSOCIATES, P.A. USE OR REPRODUCTION IS PROHIBITED WITHOUT WRITTEN CONSENT.

CEI Solutions for Land and Life

CEI ENGINEERING ASSOCIATES, INC.
 3030 LBJ FREEWAY, SUITE 920
 DALLAS, TX 75234
 PHONE: (972) 488-3737
 FAX: (972) 488-6732

DRAWING LOCATION: P:\34000\34228\0DRAWINGS\DESIGN\WORKING\34228-UP.DWG - SAVED BY: ZHUMPHRIES

MATCH LINE SEE SHEET C8

MATCH LINE SEE SHEET C7

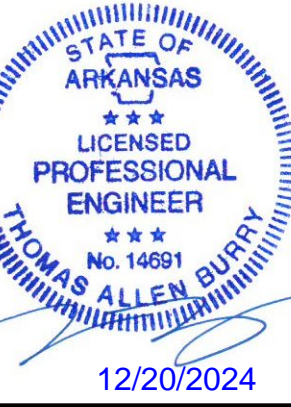
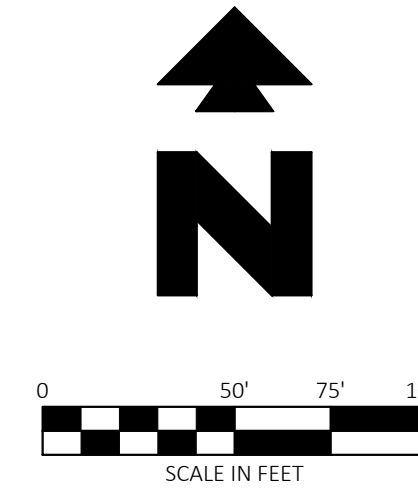
SITE BENCHMARK

BENCHMARK #1: 5/8" REBAR WITH CEI CAP LOCATED ON THE NORTH SIDE OF PARKING LOT APPROXIMATELY 66.2' WEST OF A STORM DRAINAGE MANHOLE AND APPROXIMATELY 76.1' NORTH OF A LIGHT POLE (2-LIGHTS) LOCATED IN THE PARKING LOT. ELEV. = 1473.62'

BENCHMARK #2: 5/8" REBAR WITH CEI CAP LOCATED ON THE NORTH SIDE OF PARKING LOT APPROXIMATELY 30.5' EAST OF A STORM DRAINAGE MANHOLE AND APPROXIMATELY 305' WEST FROM ANOTHER STORM DRAINAGE MANHOLE. ELEV. = 1464.40'

RECORD MONUMENT

A SURVEY FOR HUNTSVILLE SCHOOL DISTRICT
S202000062 (MADISON CO.)
AR STATE SURVEY #202008252570

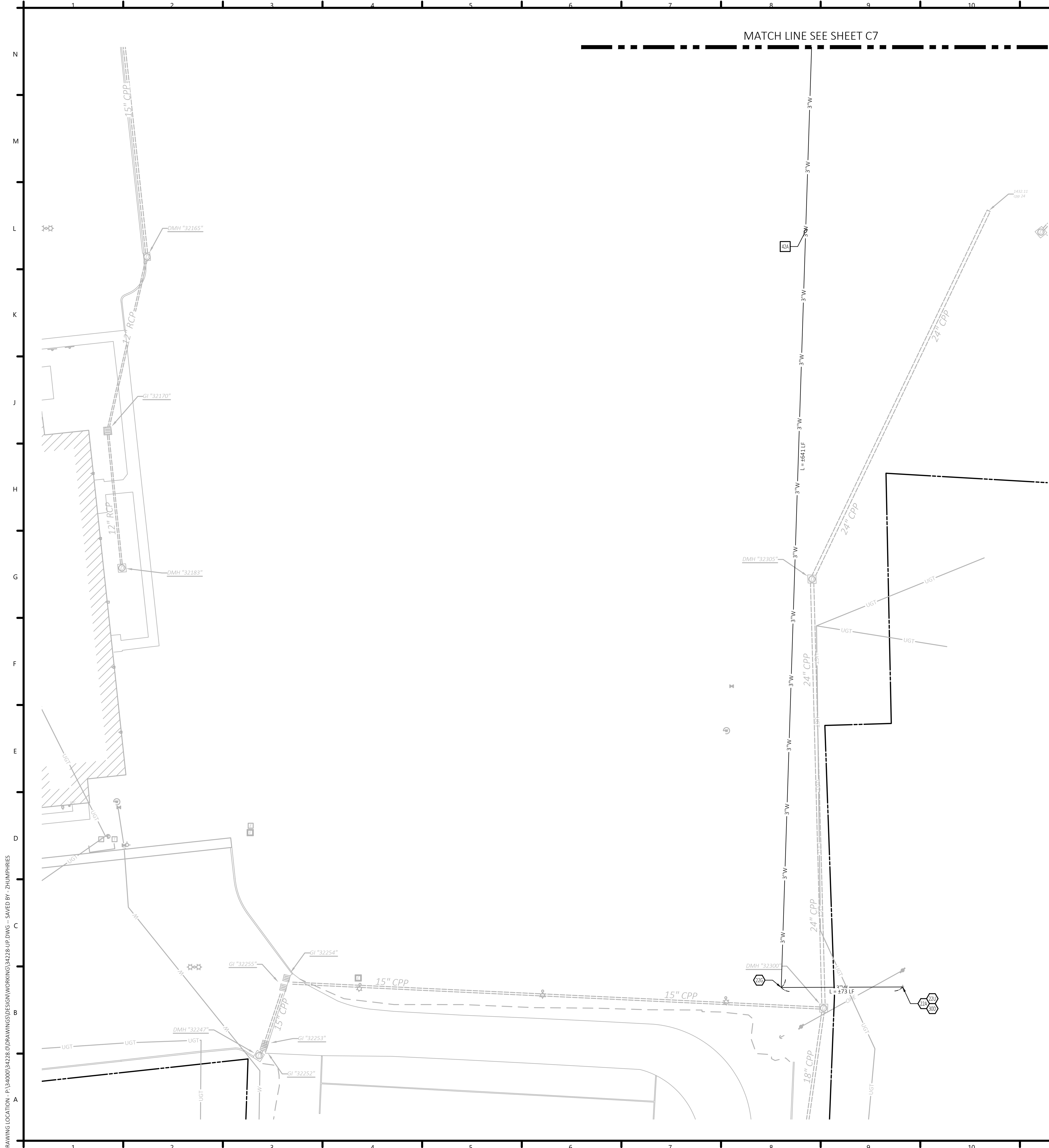


EXISTING LEGEND			
	BENCHMARK (BM)		WATER VALVE
	FENCE POST WOOD		FIRE DEPARTMENT CONNECTION
	GAS METER		BOLLARD / GUARD POST
	ELECTRIC METER		ROOF DRAIN
	WATER METER		ELECTRIC VAULT
	DRAINAGE MANHOLE (DMH)		TELEPHONE VAULT
	GRATE INLET (GI)		WARNING FIBER OPTIC LINE SIGN
	FIRE HYDRANT		TRAFFIC SIGN (TYPE OF SIGN)
	SEWER MANHOLE (SMH)		TREE (DECIDUOUS)
	SEWER CLEAN OUT		BOUNDARY LINE
	GREASE TRAP		CENTERLINE OF CREEK
	GUY WIRE / ANCHOR		GAS LINE
	UTILITY POLE		OVERHEAD ELECTRIC LINE
	LIGHT POLE (1 LAMP)		SANITARY SEWER LINE
	LIGHT POLE (2 LAMPS)		STORM DRAINAGE PIPE
	ELECTRIC RISER		WATER LINE
	FIBER OPTIC RISER		RECORD BEARING & DISTANCE PER INSTR. S202000062 (MADISON CO.) & AR STATE SURVEYOR #202008252570
	TELEPHONE RISER		
	UNKNOWN RISER		

PROPOSED LEGEND			
	PROPERTY LINE/RIGHT OF WAY LINE		SANITARY SEWER SERVICE
	STORM DRAIN		UNDERGROUND ELECTRIC SERVICE
	GAS SERVICE		WATER SERVICE
	OVERHEAD ELECTRIC SERVICE		

- GENERAL UTILITY NOTES**
- ALL DOMESTIC SERVICE LINES SHALL BE PVC (ASTM D2241) 1" & 3" WITH 36" MIN. COVER. ALL WATER MAIN LINES SHALL BE 8" AWWA C900 DR14 WITH TRACER WIRE WITH 36" MIN. COVER.
 - ALL SANITARY SEWER SERVICE LINES SHALL BE 4" & 6" PVC ASTM D 3034, SDR 35 WITH 36" MIN. COVER.
 - CONTRACTOR SHALL COORDINATE ANY DISRUPTIONS TO EXISTING UTILITY SERVICES WITH ADJACENT PROPERTY OWNERS.
 - ALL ELECTRIC, TELEPHONE AND GAS EXTENSIONS INCLUDING SERVICE LINES SHALL BE CONSTRUCTED TO THE APPROPRIATE UTILITY COMPANY SPECIFICATIONS. ALL UTILITY DISCONNECTIONS SHALL BE COORDINATED WITH THE DESIGNATED UTILITY COMPANIES.
 - CONSTRUCTION SHALL NOT START ON ANY PUBLIC UTILITY SYSTEM UNTIL WRITTEN APPROVAL HAS BEEN RECEIVED BY THE ENGINEER FROM THE APPROPRIATE GOVERNING AUTHORITY AND CONTRACTOR HAS BEEN NOTIFIED BY THE ENGINEER.
 - PRIOR TO THE CONSTRUCTION OF OR CONNECTION TO ANY STORM DRAIN, SANITARY SEWER, WATER MAIN OR ANY OF THE DRY UTILITIES, THE CONTRACTOR SHALL EXCAVATE, VERIFY AND CALCULATE ALL POINTS OF CONNECTION AND ALL UTILITY CROSSINGS AND INFORM CEI ENGINEERING AND THE OWNER/DEVELOPER OF ANY CONFLICT OR REQUIRED DEVIATIONS FROM THE PLAN. NOTIFICATION SHALL BE MADE A MINIMUM OF 48 HOURS PRIOR TO CONSTRUCTION. CEI ENGINEERING AND ITS CLIENTS SHALL BE HELD HARMLESS IN THE EVENT THAT THE CONTRACTOR FAILS TO MAKE SUCH NOTIFICATION.
 - UNLESS OTHERWISE SHOWN, CALLED OUT OR SPECIFIED HEREON OR WITHIN SPECIFICATIONS: ALL WATER LINE FITTINGS SHALL BE INSTALLED WITH THRUST BLOCKING PER DETAIL 31C. ALL WATER LINE PIPE BEDDING SHALL BE INSTALLED PER DETAIL 42A. ALL SANITARY SEWER PIPE BEDDING SHALL BE INSTALLED PER DETAIL 42B.

- UTILITY NOTES**
- 22A POINT OF CONNECTION - WATER SERVICE (PER LOCAL CODES).
 - 22G 90 DEGREE M.J. BEND WITH THRUST BLOCKING (SEE SIZES THIS SHEET).
 - 22U COORDINATE WATER SHUT-OFF WITH ADJACENT USERS.
- UTILITY DETAILS**
- 42A WATER LINE TRENCHING AND BEDDING



CEI ENGINEERING ASSOCIATES, INC.
3030 LBJ FREEWAY, SUITE 920
DALLAS, TX 75234
PHONE: (972) 488-3737
FAX: (972) 488-6732

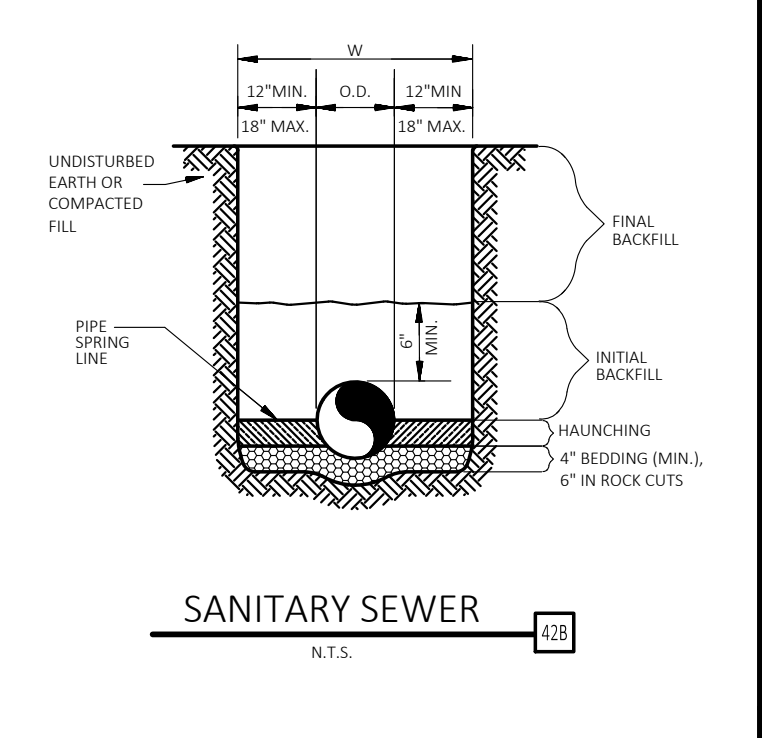
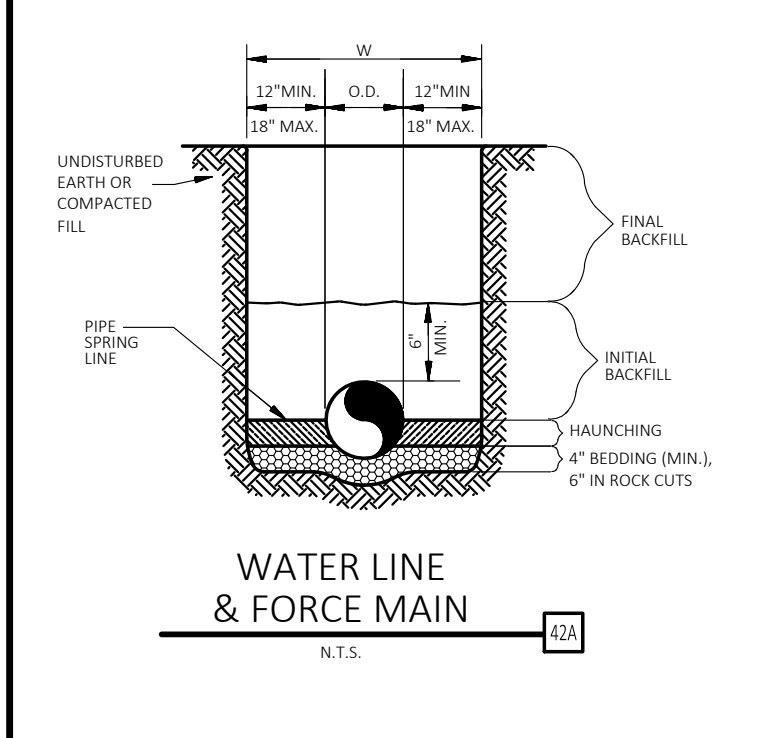
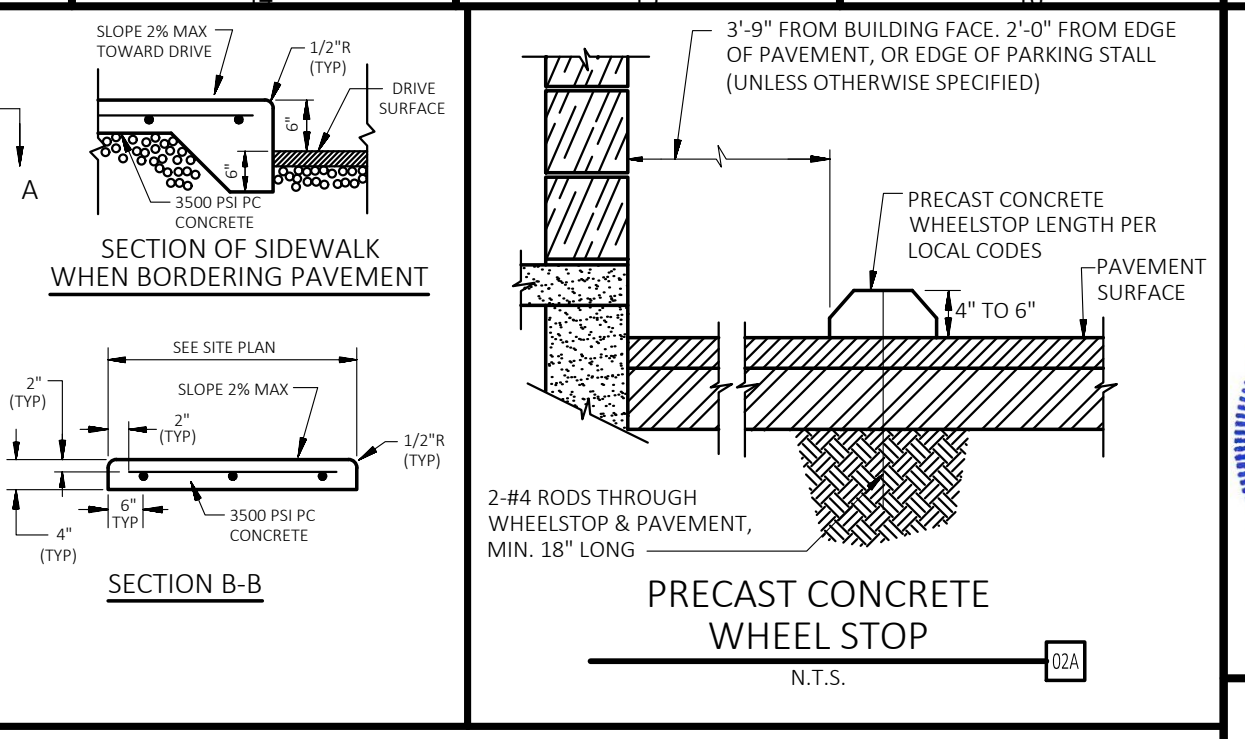
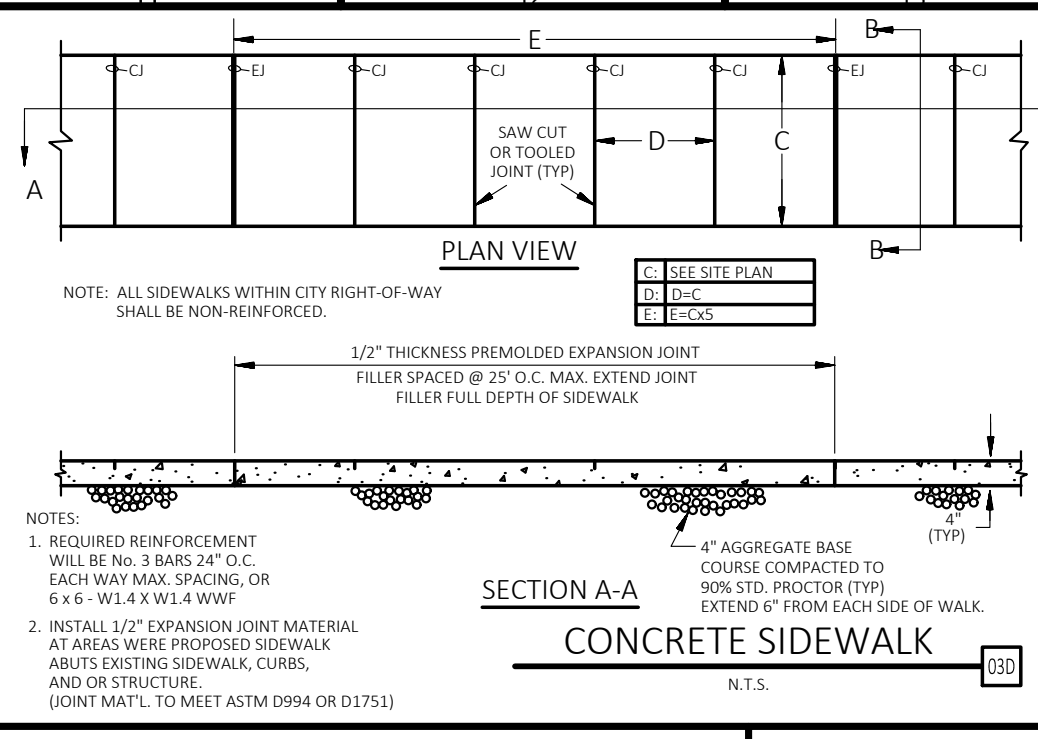
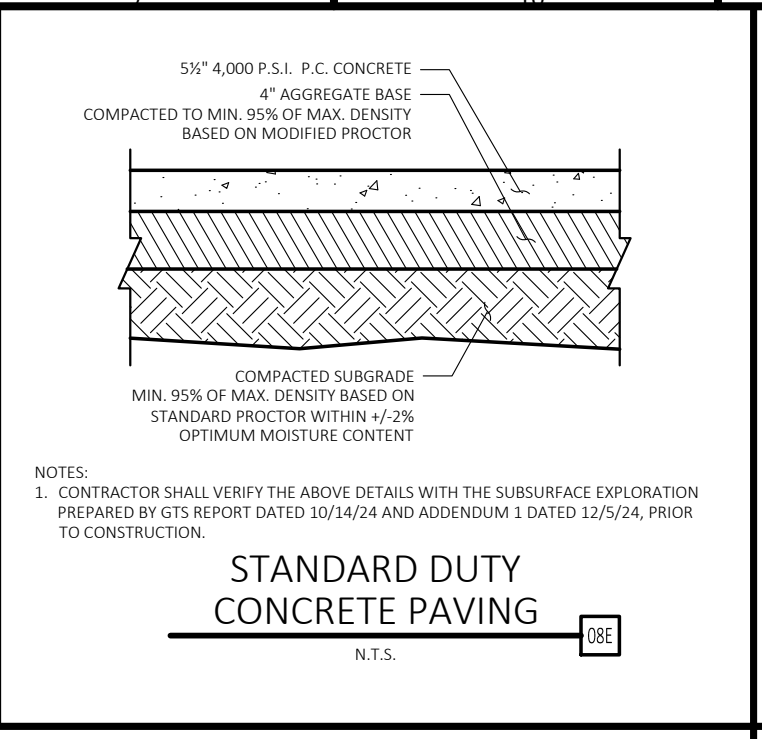
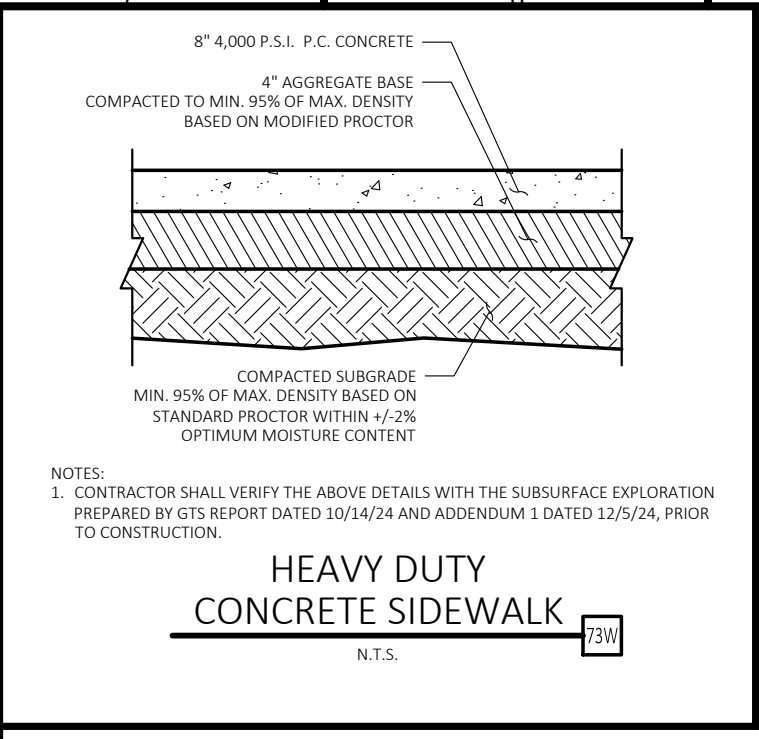
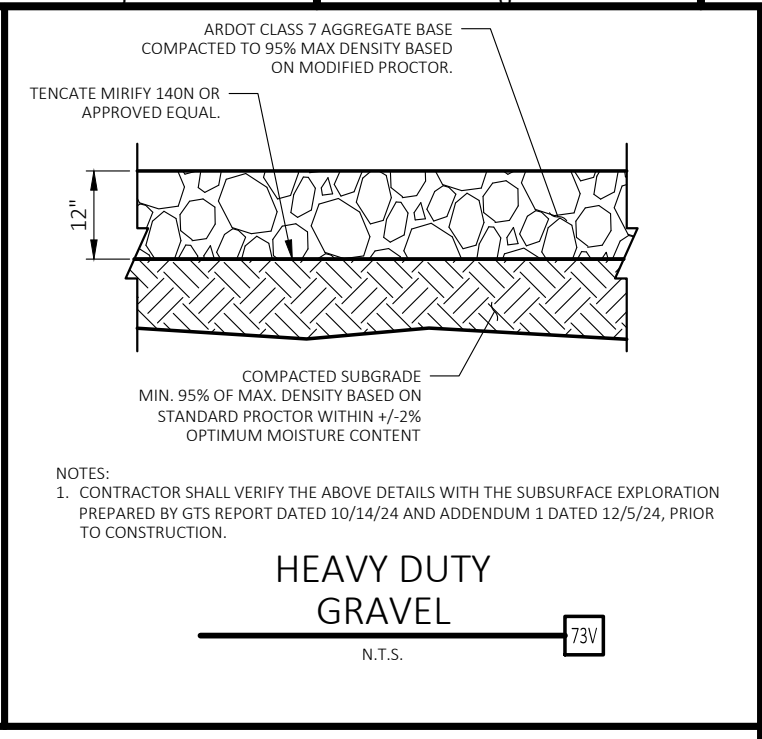
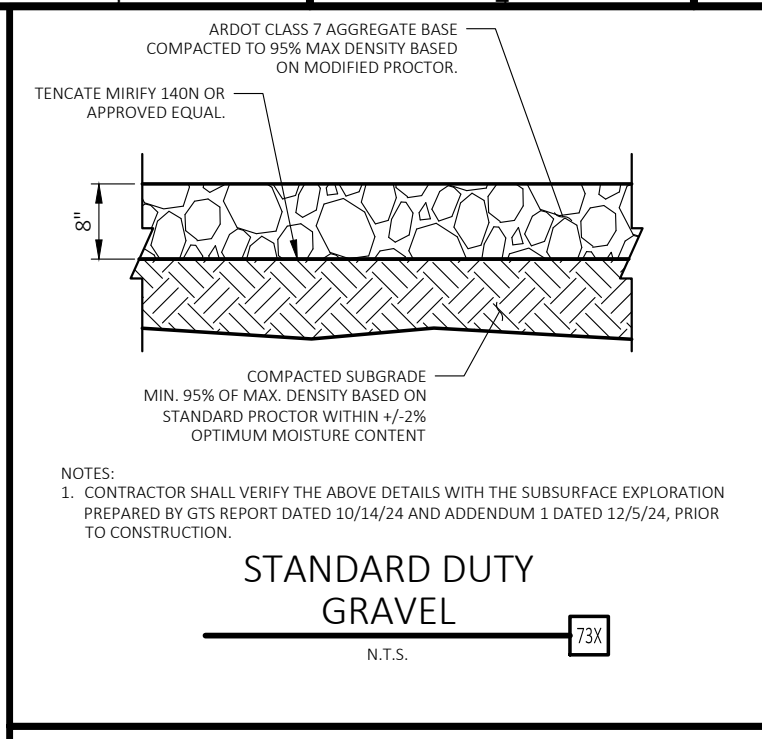
Hight Jackson
 ASSOCIATES
 5201 W Village Parkway, Suite 300 | Rogers, Arkansas 72768 | (479) 464-4965 | www.hjarch.com

A BASEBALL/SOFTBALL PRACTICE FACILITY FOR
HUNTSVILLE HIGH SCHOOL
 HUNTSVILLE, AR

DRAWN BY:
MDT
 CHECK BY:
DD
 ISSUE DATE
12/20/2024
 PROJECT NO.
2430
 REVISION DATES
 1 12/20/2024

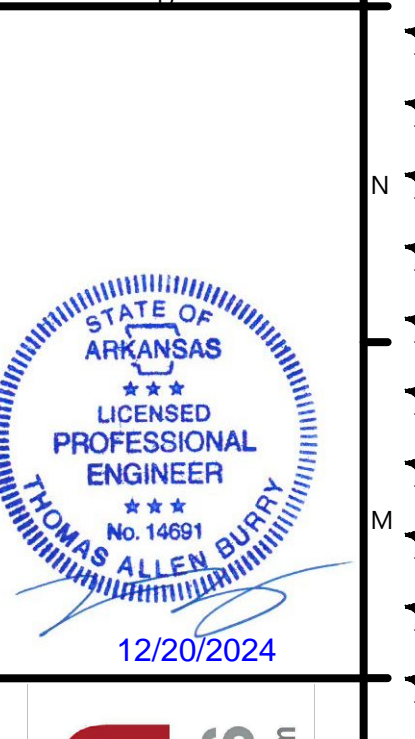
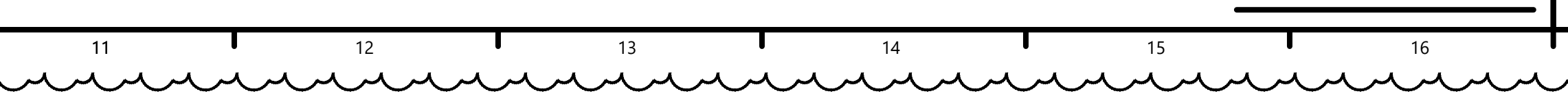
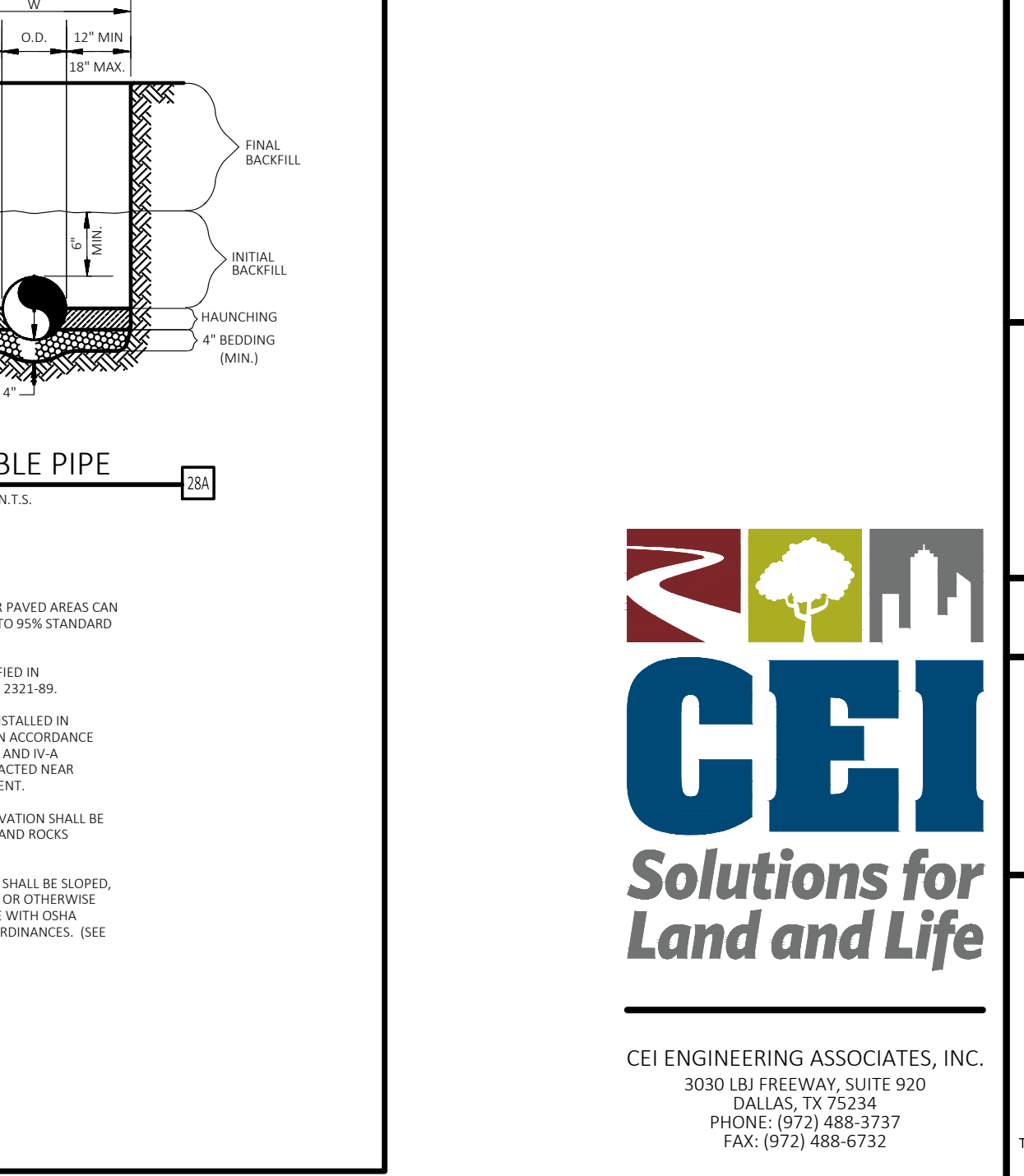
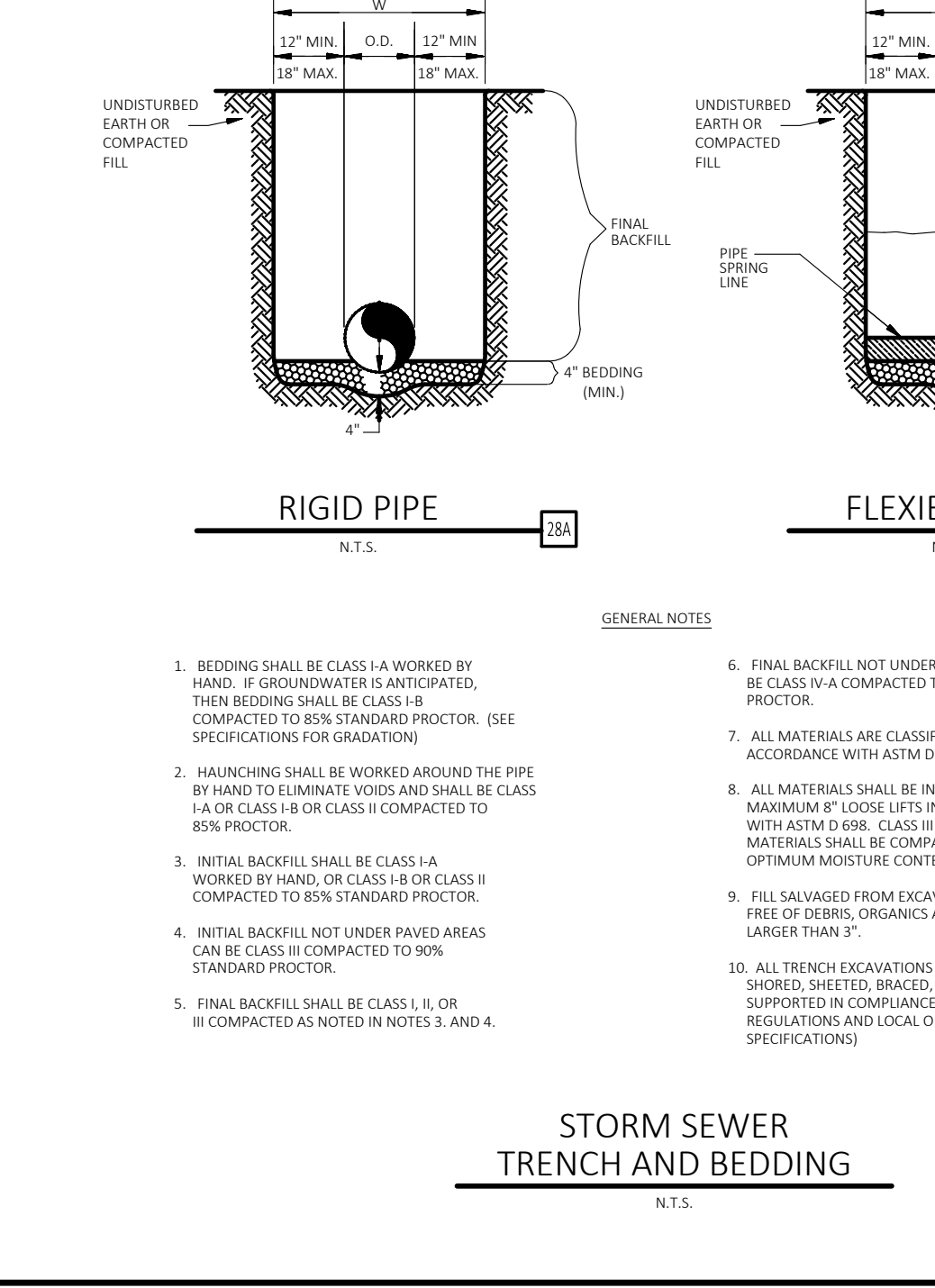
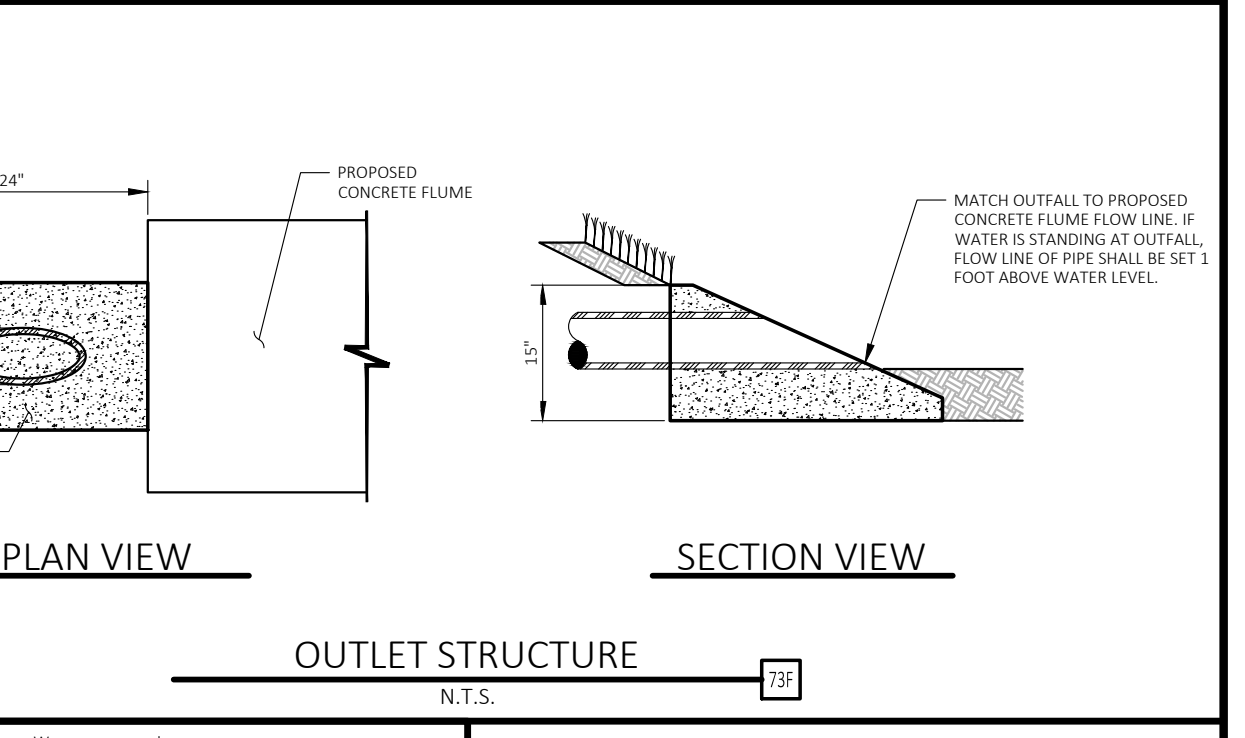
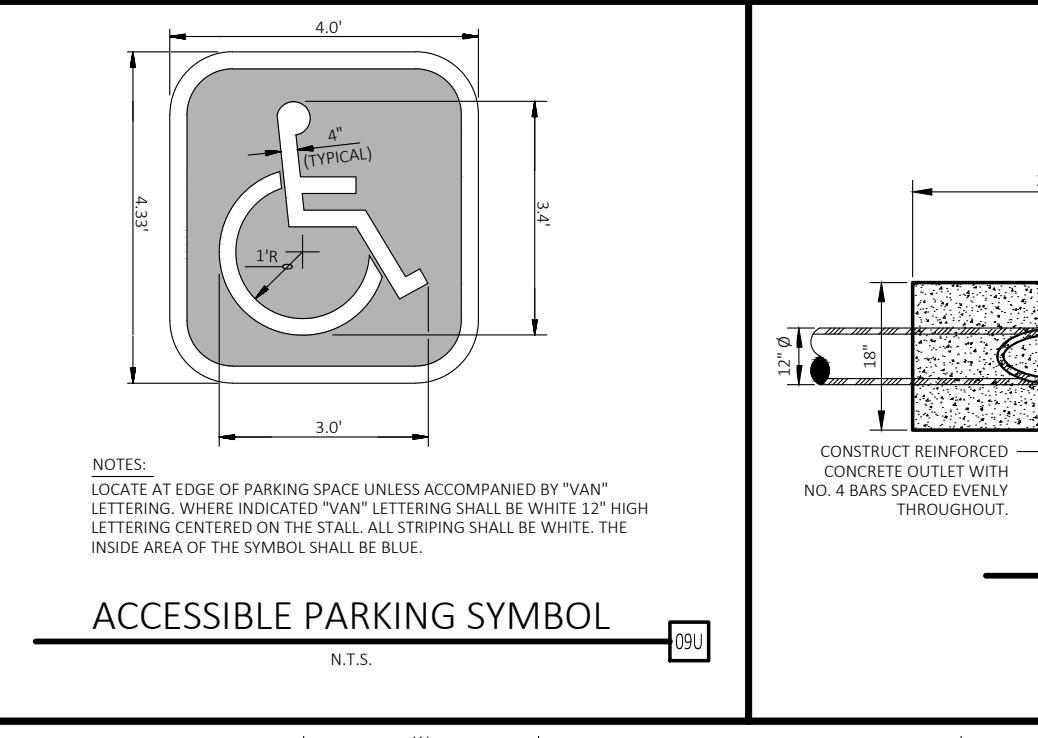
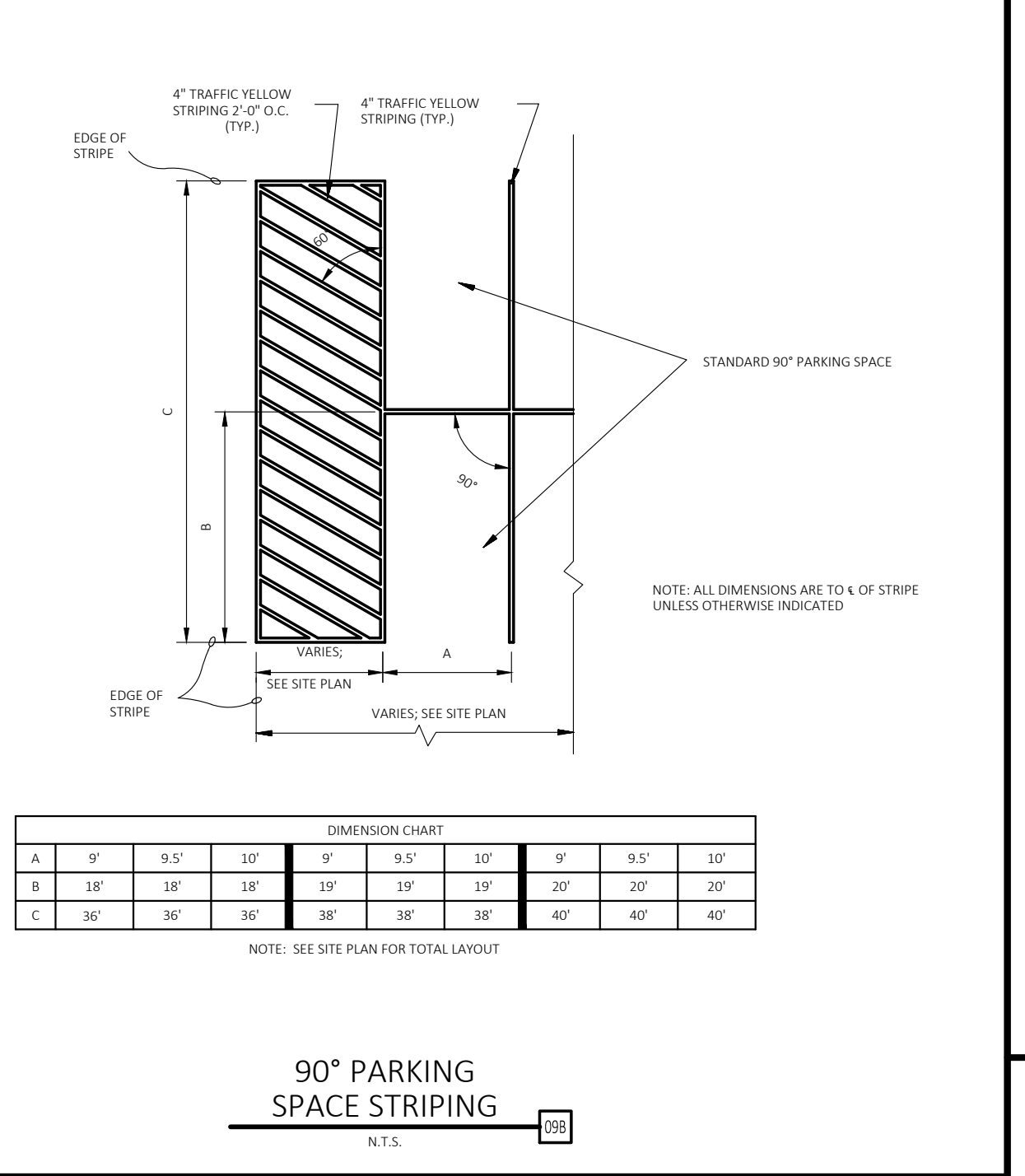
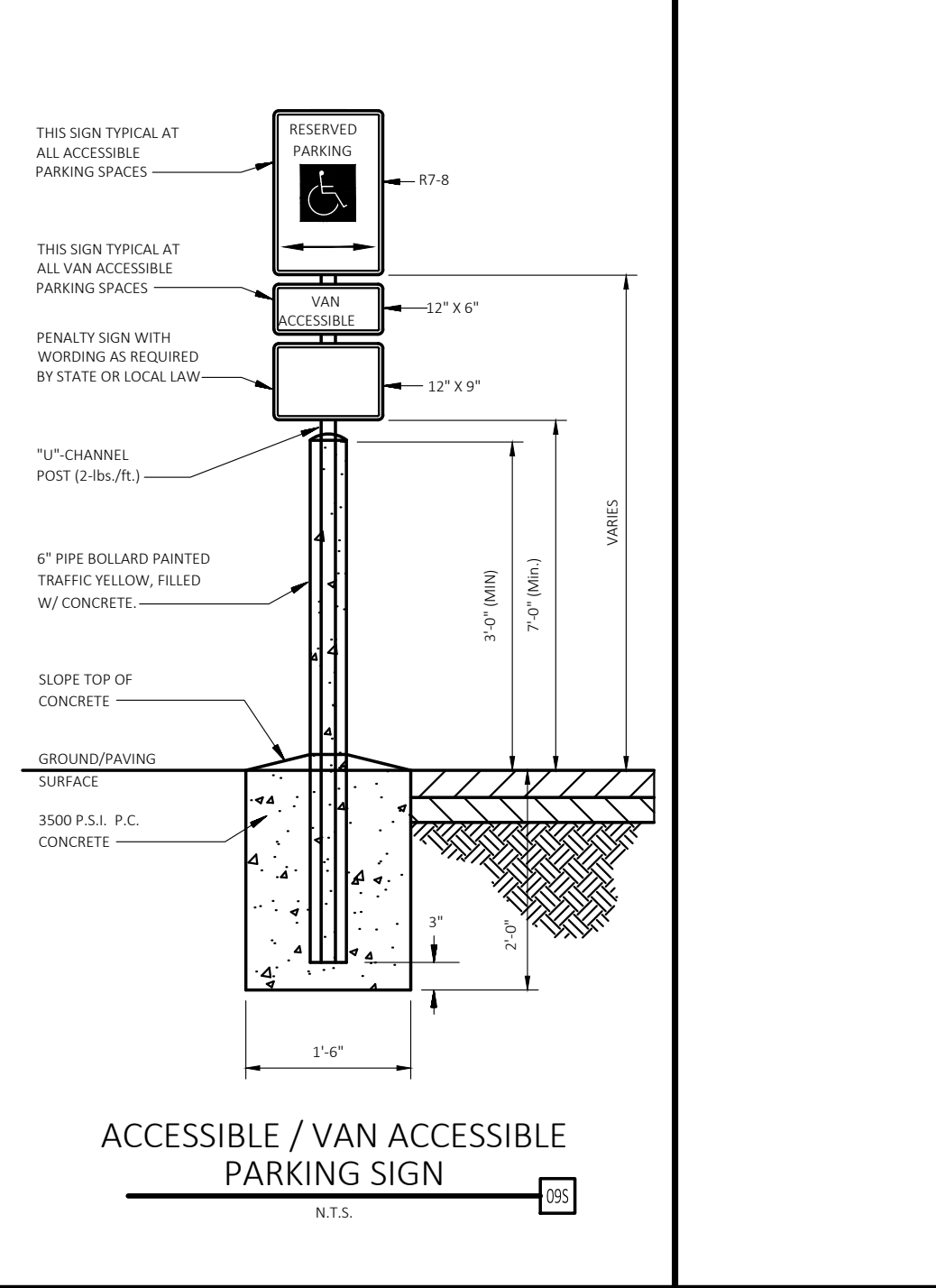
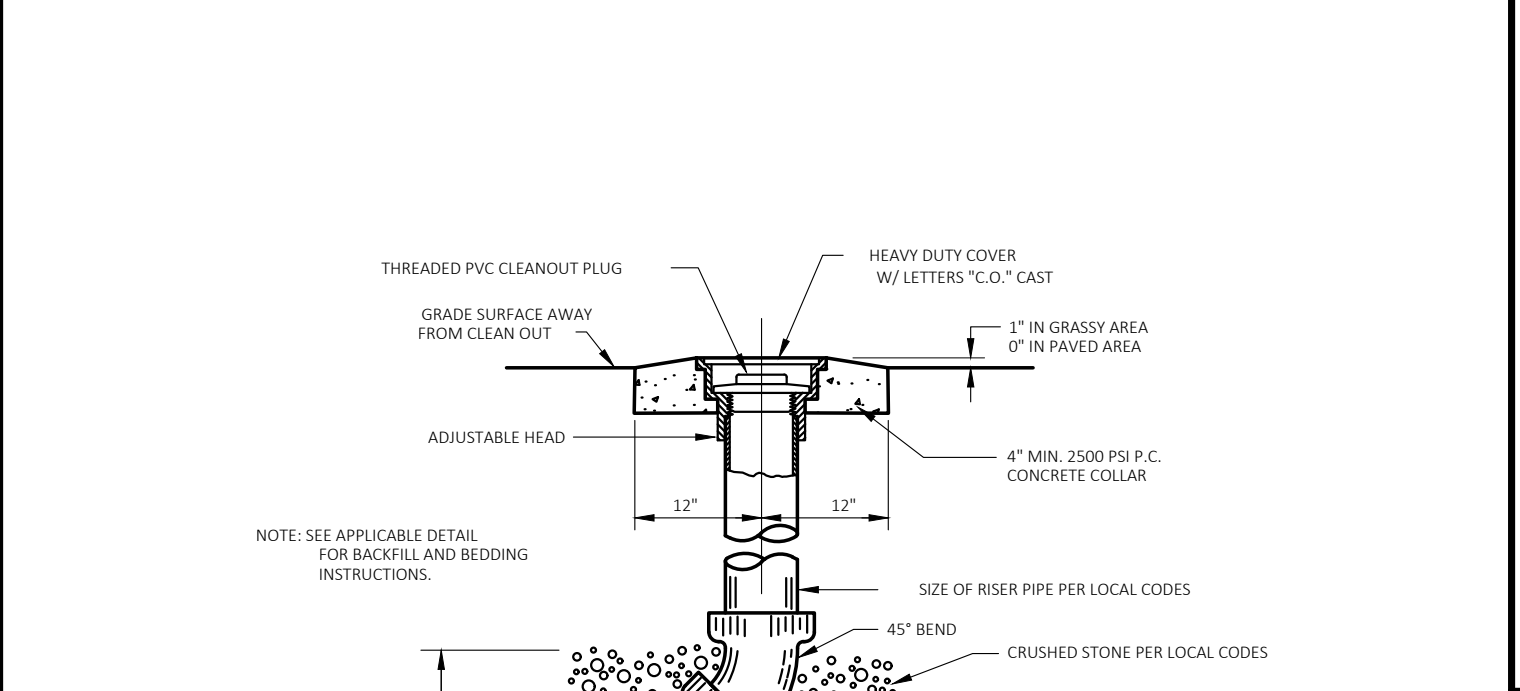
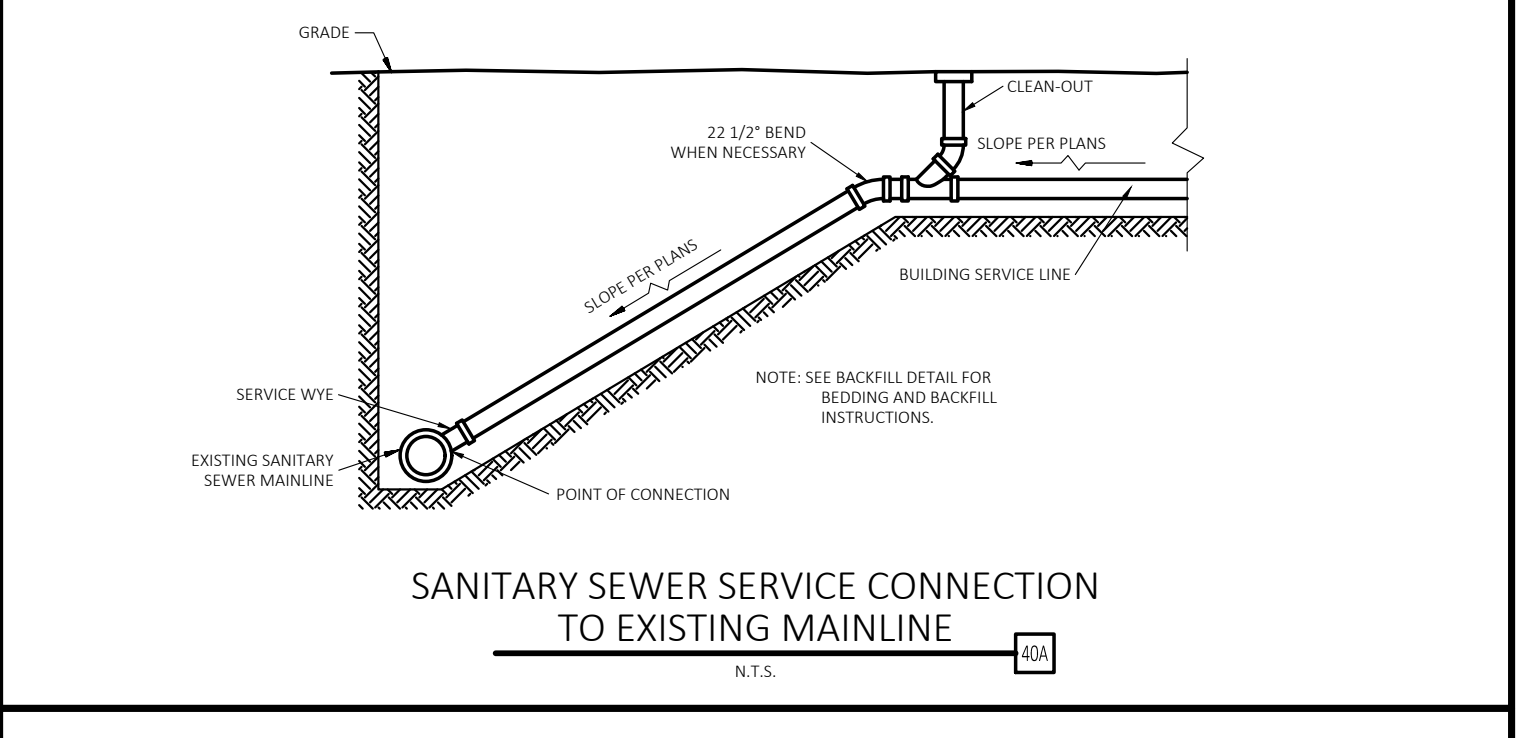
UTILITY PLAN 2
 SHEET
C8
 COPYRIGHT 2022
 THESE DRAWINGS AND SPECIFICATIONS ARE THE EXCLUSIVE PROPERTY OF HIGHT JACKSON ASSOCIATES, P.A. USE OR REPRODUCTION IS PROHIBITED WITHOUT WRITTEN CONSENT.

DRAWING LOCATION - P:\34000\34228\0\DRAWINGS\DESIGN\WORKING\134228-UP.DWG - SAVED BY - ZHUMPHRIES



GENERAL NOTES

- BEDDING SHALL BE CLASS I-A WORKED BY HAND, IF GROUNDWATER IS ANTICIPATED, THEN BEDDING SHALL BE CLASS II COMPACTED TO 85% STANDARD PROCTOR. (SEE SPECIFICATIONS FOR GRADATION)
- HAUNCHING SHALL BE WORKED AROUND THE PIPE BY HAND TO ELIMINATE VOIDS AND SHALL BE CLASS I-A OR CLASS II OR CLASS III COMPACTED TO 85% PROCTOR.
- INITIAL BACKFILL SHALL BE CLASS I-A WORKED BY HAND, OR CLASS II OR CLASS III COMPACTED TO 85% STANDARD PROCTOR.
- INITIAL BACKFILL NOT UNDER PAVED AREAS CAN BE CLASS II COMPACTED TO 90% STANDARD PROCTOR.
- FINAL BACKFILL SHALL BE CLASS I, II, OR III COMPACTED AS NOTED IN NOTES 3, AND 4
- FINAL BACKFILL NOT UNDER PAVED AREAS CAN BE CLASS IV-A COMPACTED TO 95% STANDARD PROCTOR.
- ALL MATERIALS ARE CLASSIFIED IN ACCORDANCE WITH ASTM D 2321, LATEST EDITION.
- ALL MATERIALS SHALL BE INSTALLED IN MAXIMUM 6\"/>



Hight Jackson Associates
5201 W Village Parkway, Suite 3001 Rogers, Arkansas 72768 | (479) 464-4965 | www.hjarch.com

A BASEBALL/SOFTBALL PRACTICE FACILITY FOR
HUNTSVILLE HIGH SCHOOL
HUNTSVILLE, AR

DRAWN BY: MDT
CHECK BY: DD
ISSUE DATE: 12/20/2024
PROJECT NO: 2430
REVISION DATES: 1 12/20/2024
DETAIL SHEET 1
SHEET C9
COPYRIGHT 2022 THESE DRAWINGS AND SPECIFICATIONS ARE THE EXCLUSIVE PROPERTY OF HIGHT JACKSON ASSOCIATES, P.A. USE OR REPRODUCTION IS PROHIBITED WITHOUT WRITTEN CONSENT.



DRAWING LOCATION: P:\34000134228\0\DRAWINGS\DESIGN\WORKING\34228-CS.DWG - SAVED BY: ZHUMPHRIES