

THIS DOCUMENT WAS  
ORIGINALLY ISSUED AND  
SEALED ON JANUARY 24,  
2023 BY ANDREW J.  
HANSEN, A LICENSED  
PROFESSIONAL  
ENGINEER IN THE STATE  
OF ARKANSAS, E-14664

BEAVER WATER  
DISTRICT

WESTERN CORRIDOR  
PUMP STATION

100% SET

REVISIONS AND RECORD OF ISSUE

DESIGNED:	CJK
DETAILED:	NGH
CHECKED:	JCH
APPROVED:	AJH
DATE:	JANUARY 24, 2023
PROJECT NO.:	405654

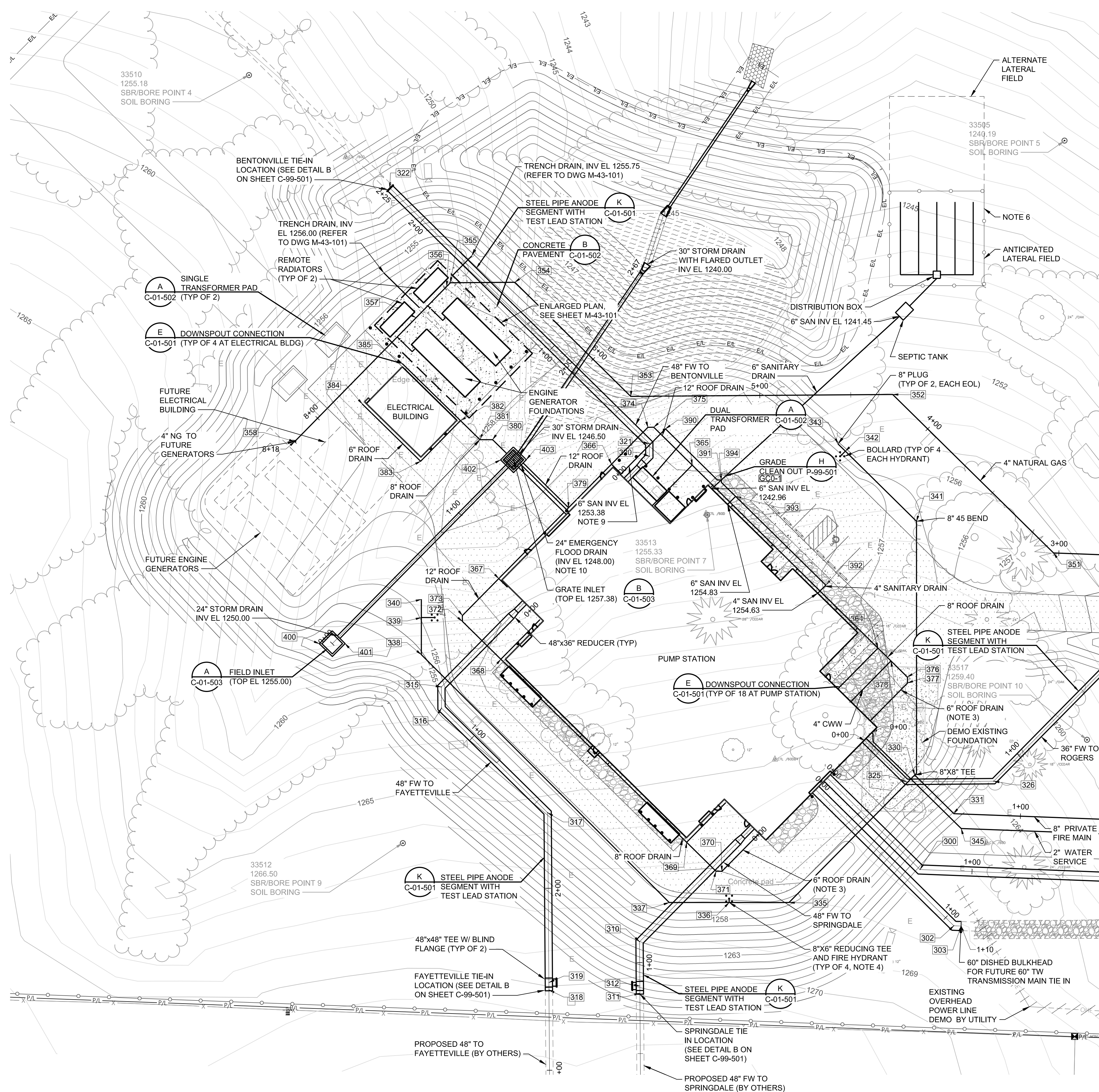
SITE

CIVIL

ENLARGED  
UTILITY PLAN  
(1 OF 2)

C-01-105

12  
OF  
159



GENERAL NOTES:

- TO THE GREATEST EXTENT POSSIBLE, TREES SHALL BE PRESERVED. ENGINEER TO REVIEW ALL TREES TO BE REMOVED PRIOR TO CONSTRUCTION.
- PROPOSED EASEMENT LINES NOT SHOWN FOR CLARITY.
- COORDINATE EXACT LOCATION OF BURIED ROOF DRAIN PIPING WITH DOWNSPOUT LOCATIONS. PROVIDE A CLEANOUT AT EACH BEGINNING OF LINE FOR THE ROOF DRAINS. CLEANOUT SHALL BE BROUGHT TO GRADE WITH 45 DEG BENDS AND A THREADED PLUG. CLEANOUT SHALL BE CAST FLUSH IN THE SIDEWALK AND DRIVEWAY.
- CONTRACTOR SHALL PROVIDE 4EA FIRE HYDRANTS ASSEMBLIES INCLUDING HYDRANTS, GATE VALVES, FITTINGS, AND BOLLARDS PER SWU STANDARD DETAIL S-2.
- ALL BURIED HARNESS MECHANICAL COUPLINGS SHALL BE BONDED ACROSS THE JOINT AS SHOWN ON DETAIL L, SHEET C-01-501.
- CONTRACTOR SHALL INSTALL TEMPORARY FENCING AROUND ANTICIPATED LATERAL FIELD PRIOR TO STARTING CONSTRUCTION TO PREVENT DISTURBANCE OF IN SITU SOILS.
- THE 48\"/>
- THE FW LINES FOR BENTONVILLE, AND ROGERS SHALL BE TERMINATED WITH DISHED BULKHEADS UNTIL THEIR TRANSMISSION MAIN CONNECTION IN SUBSEQUENT PHASES BY OTHERS. DISHED BULKHEADS LOCATIONS SHALL BE CLEARLY MARKED WITH 6FT BLUE FRP LINE MARKERS.
- SANITARY PIPE TO BE CONCRETE ENCASED WHEN ALIGNMENT IS WITHIN 10-FT OF THE FINISHED WATER PIPELINE. PIPE SHALL BE ENCASED FOR A DISTANCE OF 10-FT OF A CROSSING. REFER TO DETAIL A ON SHEET M-42-501.
- REFER TO DETAIL C ON SHEET C-99-501 FOR THE FLAP GATE DETAIL TO BE INSTALLED ON THE 24\"/>

MATCHLINE - SEE SHEET C-01-106 FOR CONTINUATION

PLOTTED: 1/23/2023 10:16:25 AM  
FILE: C:\PW\WORKING\BWW\_AMERICAS\0123176C-C-01-105.DWG  
FD1000  
D11000



THIS DOCUMENT WAS  
ORIGINALLY ISSUED AND  
SEALED ON JANUARY 24,  
2023 BY ANDREW J.  
HANSEN, A LICENSED  
PROFESSIONAL  
ENGINEER IN THE STATE  
OF ARKANSAS, E-14664

**BEAVER WATER  
DISTRICT**

**WESTERN CORRIDOR  
PUMP STATION**

**100% SET**

REVISIONS AND RECORD OF ISSUE
DESIGNED: CJK
DETAILED: NGH
CHECKED: JCH
APPROVED: AJH
DATE: JANUARY 24, 2023
PROJECT NO.: 405654

SITE

CIVIL

**ENLARGED  
UTILITY PLAN  
(2 OF 2)**

**C-01-106**

13  
OF  
159

**GENERAL NOTES:**

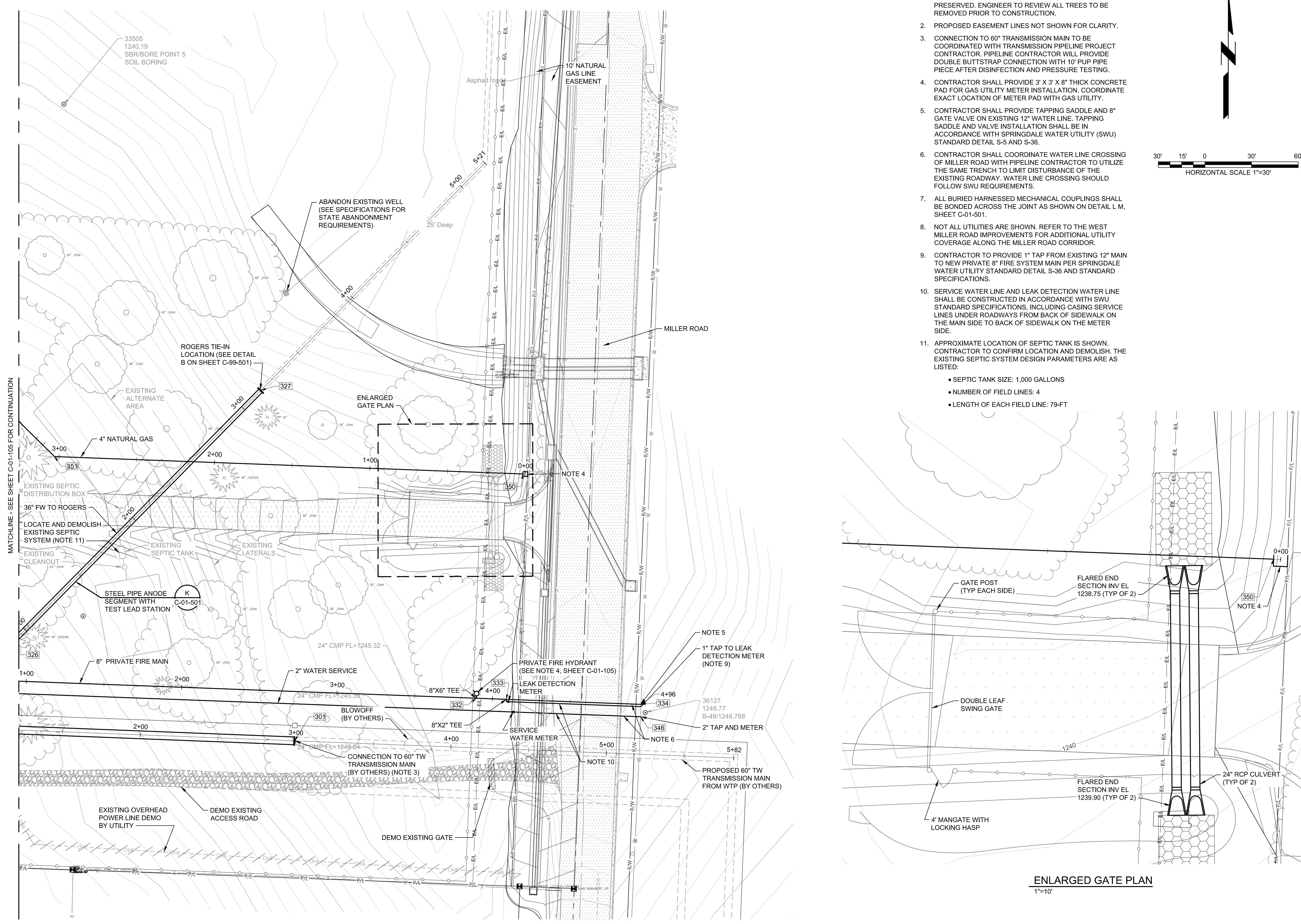
1. TO THE GREATEST EXTENT POSSIBLE, TREES SHALL BE PRESERVED. ENGINEER TO REVIEW ALL TREES TO BE REMOVED PRIOR TO CONSTRUCTION.
2. PROPOSED EASEMENT LINES NOT SHOWN FOR CLARITY.
3. CONNECTION TO 60" TRANSMISSION MAIN TO BE COORDINATED WITH TRANSMISSION PIPELINE PROJECT CONTRACTOR. PIPELINE CONTRACTOR WILL PROVIDE DOUBLE BUTTSTRAP CONNECTION WITH 10" PUP PIPE PIECE AFTER DISINFECTION AND PRESSURE TESTING.
4. CONTRACTOR SHALL PROVIDE 3' X 3' X 8" THICK CONCRETE PAD FOR GAS UTILITY METER INSTALLATION. COORDINATE EXACT LOCATION OF METER PAD WITH GAS UTILITY.
5. CONTRACTOR SHALL PROVIDE TAPPING SADDLE AND 8" GATE VALVE ON EXISTING 12" WATER LINE. TAPPING SADDLE AND VALVE INSTALLATION SHALL BE IN ACCORDANCE WITH SPRINGDALE WATER UTILITY (SWU) STANDARD DETAIL S-5 AND S-36.
6. CONTRACTOR SHALL COORDINATE WATER LINE CROSSING OF MILLER ROAD WITH PIPELINE CONTRACTOR TO UTILIZE THE SAME TRENCH TO LIMIT DISTURBANCE OF THE EXISTING ROADWAY. WATER LINE CROSSING SHOULD FOLLOW SWU REQUIREMENTS.
7. ALL BURIED HARNESSSED MECHANICAL COUPLINGS SHALL BE BONDED ACROSS THE JOINT AS SHOWN ON DETAIL L.M. SHEET C-01-501.
8. NOT ALL UTILITIES ARE SHOWN. REFER TO THE WEST MILLER ROAD IMPROVEMENTS FOR ADDITIONAL UTILITY COVERAGE ALONG THE MILLER ROAD CORRIDOR.
9. CONTRACTOR TO PROVIDE 1" TAP FROM EXISTING 12" MAIN TO NEW PRIVATE 8" FIRE SYSTEM MAIN PER SPRINGDALE WATER UTILITY STANDARD DETAIL S-36 AND STANDARD SPECIFICATIONS.
10. SERVICE WATER LINE AND LEAK DETECTION WATER LINE SHALL BE CONSTRUCTED IN ACCORDANCE WITH SWU STANDARD SPECIFICATIONS, INCLUDING CASING SERVICE LINES UNDER ROADWAYS FROM BACK OF SIDEWALK ON THE MAIN SIDE TO BACK OF SIDEWALK ON THE METER SIDE.
11. APPROXIMATE LOCATION OF SEPTIC TANK IS SHOWN. CONTRACTOR TO CONFIRM LOCATION AND DEMOLISH. THE EXISTING SEPTIC SYSTEM DESIGN PARAMETERS ARE AS LISTED:
  - SEPTIC TANK SIZE: 1,000 GALLONS
  - NUMBER OF FIELD LINES: 4
  - LENGTH OF EACH FIELD LINE: 79-FT



**ENLARGED GATE PLAN**

1"=10'

(SCALE BAR IS 4" AT FULL SCALE) 0 1/2 1 2 3 4



1/23/2023 10:19:05 AM  
C:\PW\WORKING\BW\_AMERICAS\0123176\C-01-106.DWG  
FD1000  
D11000