

THIS DOCUMENT WAS  
ORIGINALLY ISSUED AND  
SEALED ON JANUARY 24,  
2023 BY ANDREW J.  
HANSEN, A LICENSED  
PROFESSIONAL  
ENGINEER IN THE STATE  
OF ARKANSAS, E-14664

BEAVER WATER  
DISTRICT

WESTERN CORRIDOR  
PUMP STATION

100% SET

REVISIONS AND RECORD OF ISSUE

DESIGNED:	CJK
DETAILED:	NGH
CHECKED:	JCH
APPROVED:	AJH
DATE:	JANUARY 24, 2023
PROJECT NO.:	405654

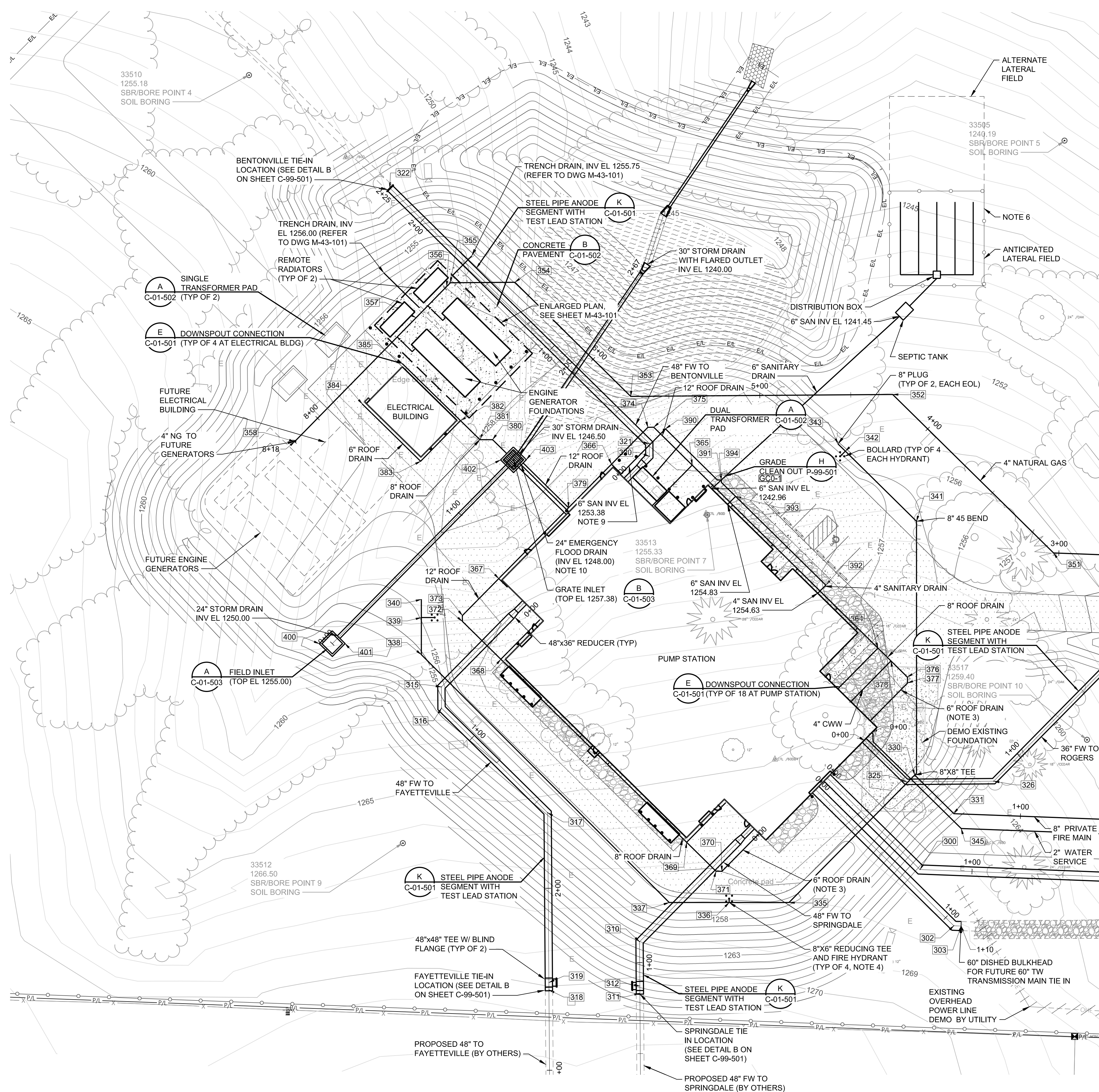
SITE

CIVIL

ENLARGED  
UTILITY PLAN  
(1 OF 2)

C-01-105

12  
OF  
159



GENERAL NOTES:

- TO THE GREATEST EXTENT POSSIBLE, TREES SHALL BE PRESERVED. ENGINEER TO REVIEW ALL TREES TO BE REMOVED PRIOR TO CONSTRUCTION.
- PROPOSED EASEMENT LINES NOT SHOWN FOR CLARITY.
- COORDINATE EXACT LOCATION OF BURIED ROOF DRAIN PIPING WITH DOWNSPOUT LOCATIONS. PROVIDE A CLEANOUT AT EACH BEGINNING OF LINE FOR THE ROOF DRAINS. CLEANOUT SHALL BE BROUGHT TO GRADE WITH 45 DEG BENDS AND A THREADED PLUG. CLEANOUT SHALL BE CAST FLUSH IN THE SIDEWALK AND DRIVEWAY.
- CONTRACTOR SHALL PROVIDE 4EA FIRE HYDRANTS ASSEMBLIES INCLUDING HYDRANTS, GATE VALVES, FITTINGS, AND BOLLARDS PER SWU STANDARD DETAIL S-2.
- ALL BURIED HARNESS MECHANICAL COUPLINGS SHALL BE BONDED ACROSS THE JOINT AS SHOWN ON DETAIL L, SHEET C-01-501.
- CONTRACTOR SHALL INSTALL TEMPORARY FENCING AROUND ANTICIPATED LATERAL FIELD PRIOR TO STARTING CONSTRUCTION TO PREVENT DISTURBANCE OF IN SITU SOILS.
- THE 48\"/>

MATCHLINE - SEE SHEET C-01-106 FOR CONTINUATION

PLOTTED: 1/23/2023 10:16:25 AM  
FILE: C:\PW\WORKING\BWV\_AMERICAS\0123176C-C-01-105.DWG  
FD1000  
D11000

