

GENERAL ABBREVIATIONS

Table of general abbreviations including A (Alarm, Compressed Air Outlet), B (Blind Flange), C (Channel), D (Direct Drive), E (Electric), F (Degrees Fahrenheit), G (Gas Outlet), H (Hand Operator), I (Intake), J (Janitor's Sink), K (Kitchen Sink), L (Level Indicator), M (Makeup Air Unit), N (Normally Closed), O (Outside Diameter), P (Pressure Drop), R (Remote Control Station), S (Square Feet), T (Trench Drain), U (Urinal), V (Vertical), W (Wide Flange), X (Flex), Y (Yield Strength), Z (Zinc Plating).

SYSTEM ABBREVIATIONS

Table of system abbreviations categorized by WATER (NPW, CW, DE, DW, F, HWC, NPHW, HW, PEW, PW, SVW, SW, TPW, TW), WASTE (CRV, CRW, CWW, D, PD, SAN, ST, V), SPECIAL (A, AR, H, HE, ME, N, NO, OX, VAC), and FUEL GAS (G, PG).

VALVE LEGEND

Table of valve symbols including PLAN, SECTION, 2D SYMBOL, and DESCRIPTION for various valves such as Angle Valve, Backflow Preventer, Backwater Valve, Ball Valve, Butterfly Valve, Check Valve, Gate Valve, Globe Valve, Plug Valve, and Pressure Reducing Valve.

PIPING ACCESSORIES LEGEND

Table of piping accessories including PLAN, 2D SYMBOL, and DESCRIPTION for items like Flexible Connection, Hose Faucet, Hose Valve, Pressure Reducing Station, Pressure Relief Valve, Quick Coupling, Wall Hydrant, Meter, Wye Strainer, and Vacuum Breaker.

PIPING LEGEND

Table of piping symbols including PLAN, 2D SYMBOL, and DESCRIPTION for Piping Above Floor, Piping Below Floor, Pipe Turning Up, and Pipe Turning Down.

CONTROLS AND INSTRUMENTATION

Table of controls and instrumentation symbols including 2D SYMBOL and DESCRIPTION for Flow Switch, Level Switch, Pressure Gauge, Solenoid Operator, Thermometer, and Vacuum Gauge.

PIPE FITTING LEGEND

Table of pipe fitting symbols including PLAN, 2D SYMBOL, and DESCRIPTION for Blind Flange, Cap, Reducer, Sleeve, Test Plug, and Union.

PLUMBING LEGEND

Table of plumbing symbols including PLAN, 2D SYMBOL, and DESCRIPTION for Bell-Up Drain, Cleanout, Floor Drain, Hose Rack, Hose Reel, Roof Drain, Shower, Splash Block, and Water Hammer Arrestor.

SCHEMATICS

Table of schematic symbols including 2D SYMBOL and DESCRIPTION for Air-Gap Fitting, Bell-Up Drain, Floor Cleanout, Floor Drain, and Vents.

SCHEMATICS SPECIALTIES

Table of schematic specialties symbols including 2D SYMBOL and DESCRIPTION for Automatic Valve Station, Basket Strainer, Combination Pump Discharge Valve, Flow Control Valve, Flow Sensor Meter, Air Vent, Rotameter, Sight Flow Indicator, Suction Diffuser, and Trap Primer.

GENERAL PLUMBING NOTES

- 1. THIS IS GENERAL LEGEND AND ABBREVIATION SHEET FOR THE PLUMBING DRAWINGS. SOME ITEMS CONTAINED ON THIS SHEET MAY NOT BE USED ON THIS SPECIFIC PROJECT.
2. ALL MECHANICAL PLUMBING WORK SHALL BE IN ACCORDANCE WITH THE FOLLOWING APPLICABLE CODES:
2012 INTERNATIONAL BUILDING CODE
2012 ARKANSAS FIRE PREVENTION CODE, VOLUME I - FIRE
2018 ARKANSAS FUEL GAS CODE
2018 ARKANSAS PLUMBING CODE
2009 INTERNATIONAL ENERGY CONSERVATION CODE (IECC)
3. FOR PLUMBING VENTS, FLUE FLASHING, AND ROOF DRAIN DETAILS, SEE ARCHITECTURAL DRAWINGS.
4. SEE ARCHITECTURAL AND STRUCTURAL DRAWINGS FOR ALL EQUIPMENT BASE DETAILS.
5. "SCREENED" DELINEATION DENOTES EXISTING AND NEW FACILITIES AND IS FOR REFERENCE ONLY. "LIGHT" LINE DELINEATION DENOTES EXISTING MECHANICAL EQUIPMENT AND SYSTEMS. EXISTING FACILITY AND MECHANICAL SYSTEMS INFORMATION WAS TAKEN FROM PREVIOUS DRAWINGS, CONSTRUCTION RECORDS, DATA, AND FIELD SURVEY INFORMATION. ACTUAL LOCATION, ARRANGEMENT, AND DIMENSIONS SHALL BE FIELD VERIFIED AND WORK INSTALLED TO MEET ACTUAL CONDITIONS AND LOCATIONS ENCOUNTERED. "BOLD" (DARK) DELINEATION IS NEW WORK TO BE CONSTRUCTED UNDER THIS CONTRACT.
6. ALL PIPE PENETRATIONS THROUGH FIRE RESISTANCE RATED ASSEMBLIES SHALL BE PROVIDED WITH FIRESTOP SYSTEMS, EQUIPMENT AND ACCESSORIES TO RESIST THE PASSAGE OF FIRE, SMOKE AND OTHER GASES. THE ORIGINAL FIRE RESISTANCE RATING OF THE ASSEMBLY PENETRATED SHALL BE MAINTAINED FOR ALL TYPES OF PENETRATIONS. SEE ARCHITECTURAL DRAWINGS FOR RATED ASSEMBLY LOCATIONS.
7. METAL ROOF DECKING OR BOTTOM CHORD OF BAR JOISTS SHALL NOT BE USED FOR THE SUPPORT OF EQUIPMENT OR PIPING.
8. ALL HANGERS, BRACKETS, OR BRACES FOR EQUIPMENT AND PIPING ARE NOT INDICATED ON THE DRAWINGS. REFER TO THE SPECIFICATIONS FOR SUPPORT REQUIREMENTS NOT SHOWN ON THE PLANS.
9. ALL EQUIPMENT AND PIPING FINAL LOCATIONS SHALL BE COORDINATED TO AVOID INTERFERENCES WITH STRUCTURE, OTHER PIPING, EQUIPMENT, DUCTWORK, AND CONDUIT. UNLESS SPECIFICALLY DIMENSIONED, THE PIPE ROUTING SHOWN IS INTENDED TO INDICATE GENERAL LOCATION ONLY.
10. ALL PIPING SHALL BE ROUTED AS HIGH AS POSSIBLE WITH A MINIMUM HEIGHT OF 8'-0" ABOVE THE WALKING SURFACE UNLESS OTHERWISE INDICATED BY A CENTERLINE OR INVERT ELEVATION.
11. PIPING INSTALLED ABOVE SUSPENDED CEILINGS SHALL BE INSTALLED TO ALLOW A MINIMUM 6 INCH CLEARANCE BETWEEN THE CEILING AND PIPING.
12. ALL HOSE FAUCETS AND HOSE VALVES SHALL BE INSTALLED 3'-0" ABOVE FINISHED FLOOR UNLESS OTHERWISE NOTED. WALL HYDRANTS SHALL BE INSTALLED 2'-0" ABOVE GRADE UNLESS OTHERWISE NOTED.
13. ALL HOSE FAUCETS AND WALL HYDRANTS SHALL BE NOMINAL 3/4" PIPE SIZE UNLESS OTHERWISE NOTED. ALL HOSE VALVES SHALL BE 1 1/2" NOMINAL PIPE SIZE UNLESS OTHERWISE NOTED.
14. ALL HOSE FAUCETS, WALL HYDRANTS, AND OTHER OUTLETS ON NON-POTABLE WATER LINES WHICH COULD BE USED FOR DRINKING OR DOMESTIC USE SHALL BE POSTED AS REQUIRED BY THE APPLICABLE CODES. IN ABSENCE OF A CODE REQUIREMENT, THE OUTLET SHALL BE POSTED WITH A TAG IN THE SHAPE OF A 4" EQUILATERAL TRIANGLE BEARING THE LEGEND "DANGER: UNSAFE WATER" IN LETTERS NOT LESS THAN 1/2" IN HEIGHT. THIS TAG SHALL BE SECURELY ATTACHED IN A VISIBLE LOCATION DIRECTLY ABOVE OUTLET. THE TAG SHALL BE PAINTED ORANGE AND THE LETTERS BLACK.
15. ALL RELIEF VALVES SHALL BE PIPED TO FLOOR OR BELL-UP DRAINS.
16. SEISMIC RESTRAINTS/BRACING SHALL BE PROVIDED FOR ALL EQUIPMENT, PIPING AND ACCESSORIES IN ACCORDANCE WITH THE LATEST SMACNA SEISMIC RESTRAINT MANUAL AND LOCAL BUILDING CODES. CONTRACTOR SHALL BE RESPONSIBLE FOR ALL SEISMIC SUPPORTS AND ADDITIONAL MISCELLANEOUS STEEL REQUIRED FOR PROPER INSTALLATION OF SUPPORTS. SUPPORTS AND SEISMIC RESTRAINTS DESIGN SUBMITTALS SHALL BEAR THE STAMP AND SIGNATURE OF A LICENSED ENGINEER.
17. INSULATION SHALL BE PROVIDED FOR EQUIPMENT AND PIPING SYSTEMS AS INDICATED IN THE SPECIFICATIONS.
18. PLUMBING VENTS OUTLETS SHALL BE LOCATED A MINIMUM OF 10'-0" AWAY FROM ANY OUTSIDE AIR INLET.
19. PIPING SIZES TO EQUIPMENT AND EQUIPMENT SUPPORTS SHALL BE VERIFIED AND ADJUSTED TO MATCH ACTUAL EQUIPMENT FURNISHED.
20. ALL MATERIALS, FITTINGS, COVERS, AND EQUIPMENT INSTALLED IN RETURN AIR PLENUMS SHALL BE NONCOMBUSTIBLE AND UL LISTED FOR USE IN RETURN AIR PLENUMS.



Black & Veatch Corporation
Kansas City, Missouri



THIS DOCUMENT WAS
ORIGINALLY ISSUED AND
SEALED ON JANUARY 24,
2023 BY MICHELE F.
ROTH, A LICENSED
PROFESSIONAL
ENGINEER IN THE STATE
OF ARKANSAS, E-17959

BEAVER
WATER
DISTRICT

WESTERN CORRIDOR
PUMP STATION

100% SET

Table with 2 columns: REVISIONS AND RECORD OF ISSUE, with rows for DESIGNED (SAM), DETAILED (YBM), CHECKED (ABG), APPROVED (MFR), DATE (JANUARY 24, 2023), and PROJECT NO. (405654).

GENERAL
PLUMBING
LEGENDS,
ABBREVIATIONS, AND
GENERAL NOTES

GENERAL SHEET NOTES

- SEE DRAWING P-00-001 FOR LEGENDS, ABBREVIATIONS, AND GENERAL NOTES.



Black & Veatch Corporation
Kansas City, Missouri



THIS DOCUMENT WAS
ORIGINALLY ISSUED AND
SEALED ON JANUARY 24,
2023 BY MICHELE F.
ROTH, A LICENSED
PROFESSIONAL
ENGINEER IN THE STATE
OF ARKANSAS, E-17959

BEAVER
WATER
DISTRICT

WESTERN CORRIDOR
PUMP STATION

100% SET

REVISIONS AND RECORD OF ISSUE	
DESIGNED:	SAM
DETAILED:	YBM
CHECKED:	ABG
APPROVED:	MFR
DATE:	JANUARY 24, 2023
PROJECT NO.:	405654

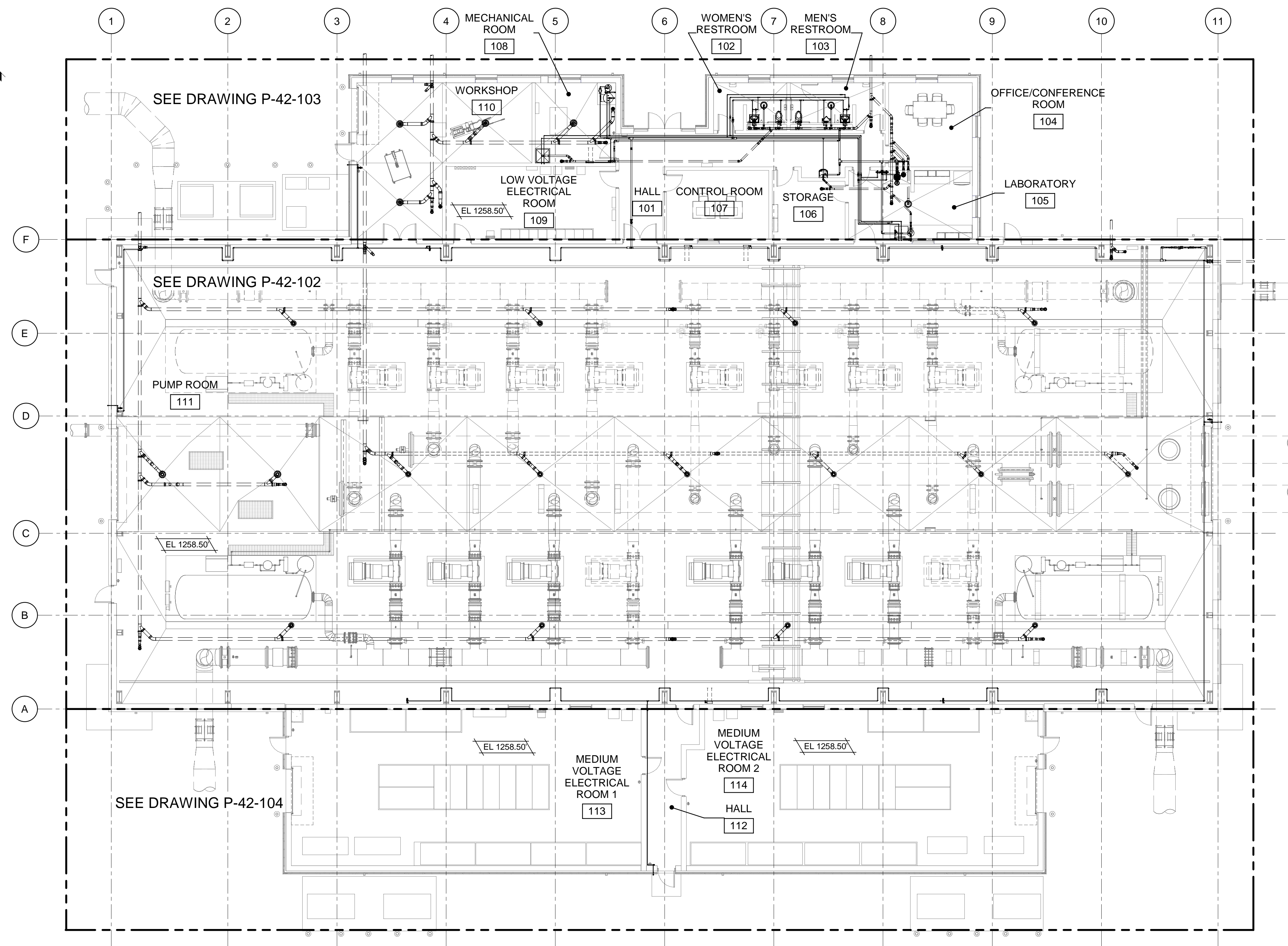
PUMP STATION

PLUMBING

OVERALL PLAN

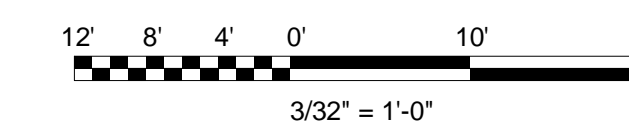
P-42-101

91
OF
159



OVERALL PLAN

3/32" = 1'-0"



(SCALE BAR IS 4" AT FULL SCALE) 0 1/2 1 2 3 4

GENERAL SHEET NOTES

- SEE DRAWING P-00-001 FOR LEGENDS, ABBREVIATIONS, AND GENERAL NOTES.
- ALL FLOOR DRAINS AND FUNNEL RECEPTORS SHALL RECEIVE A 1/2" TRAP-PRIMER CONNECTION FROM TRAP PRIMING PANEL 42-TP-02, 42-TP-03, 42-TP-04.



Black & Veatch Corporation
Kansas City, Missouri



THIS DOCUMENT WAS
ORIGINALLY ISSUED AND
SEALED ON JANUARY 24,
2023 BY MICHELE F.
ROTH, A LICENSED
PROFESSIONAL
ENGINEER IN THE STATE
OF ARKANSAS, E-17959

BEAVER
WATER
DISTRICT

WESTERN CORRIDOR
PUMP STATION

100% SET

REVISIONS AND RECORD OF ISSUE

DESIGNED:	SAM
DETAILED:	YBM
CHECKED:	ABG
APPROVED:	MFR
DATE:	JANUARY 24, 2023
PROJECT NO.:	405654

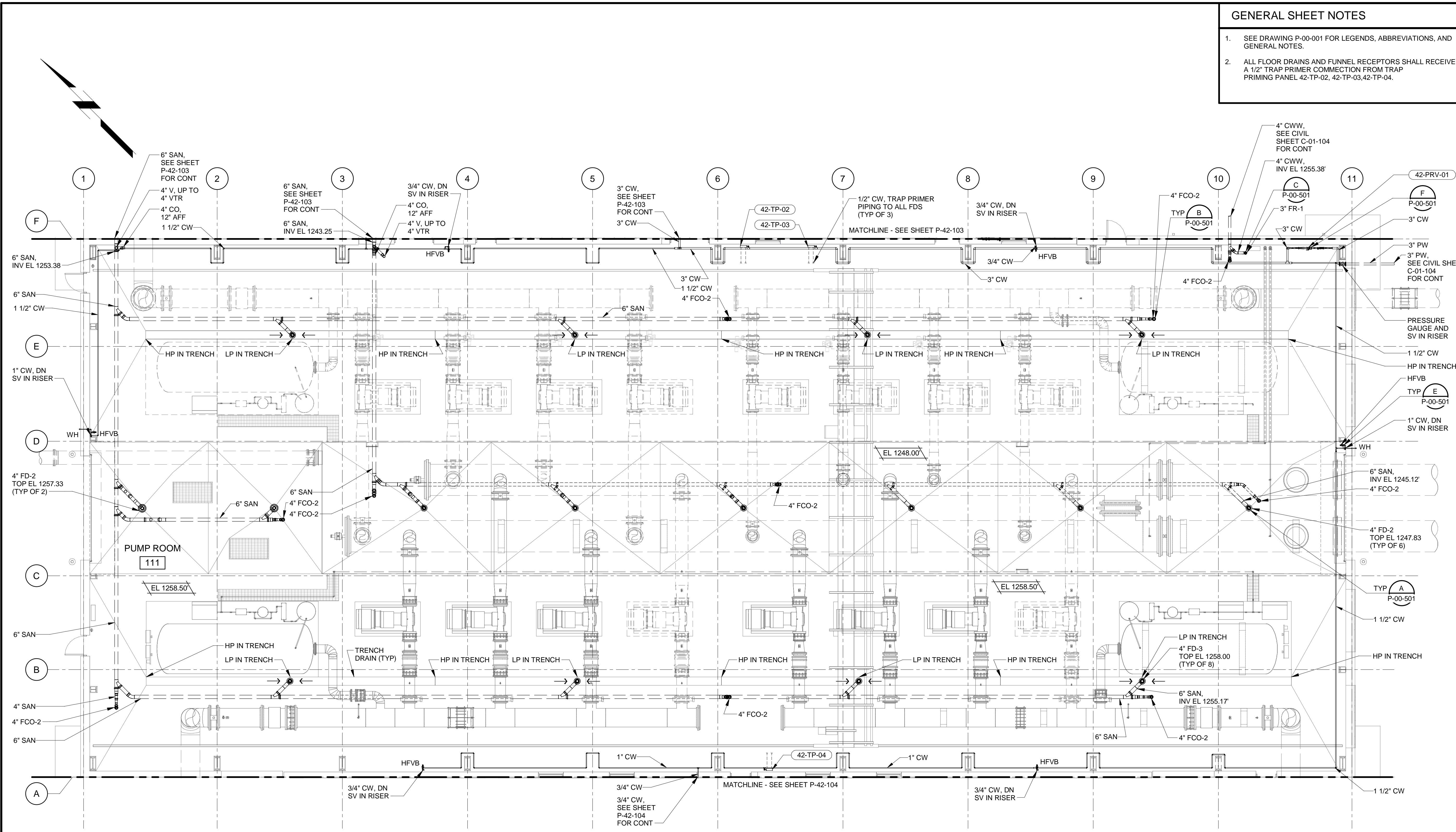
PUMP STATION

PLUMBING

OPERATING FLOOR PLAN
- PUMP ROOM

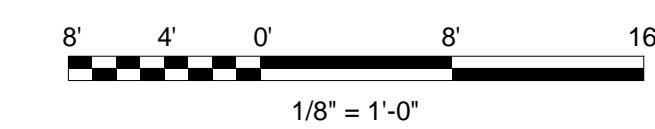
P-42-102

92
OF
159



ENLARGED PLAN

1/8" = 1'-0"



(SCALE BAR IS 4\"/>

PLOTTED: 1/20/2023 7:33:24 AM
 FILE: BIM_360/405654 - BWD Western Corridor Pump Station/405654-42-PUMP STATION.rvt
 D11000

THIS DOCUMENT WAS
ORIGINALLY ISSUED AND
SEALED ON JANUARY 24,
2023 BY MICHELE F.
ROTH, A LICENSED
PROFESSIONAL
ENGINEER IN THE STATE
OF ARKANSAS, E-17959

BEAVER
WATER
DISTRICT

WESTERN CORRIDOR
PUMP STATION

100% SET

REVISIONS AND RECORD OF ISSUE

DESIGNED:	SAM
DETAILED:	YBM
CHECKED:	ABG
APPROVED:	MFR
DATE:	JANUARY 24, 2023
PROJECT NO.:	405654

PUMP STATION

PLUMBING

OPERATING FLOOR PLAN
AND DETAILS -
ADMINISTRATIVE WING

P-42-103

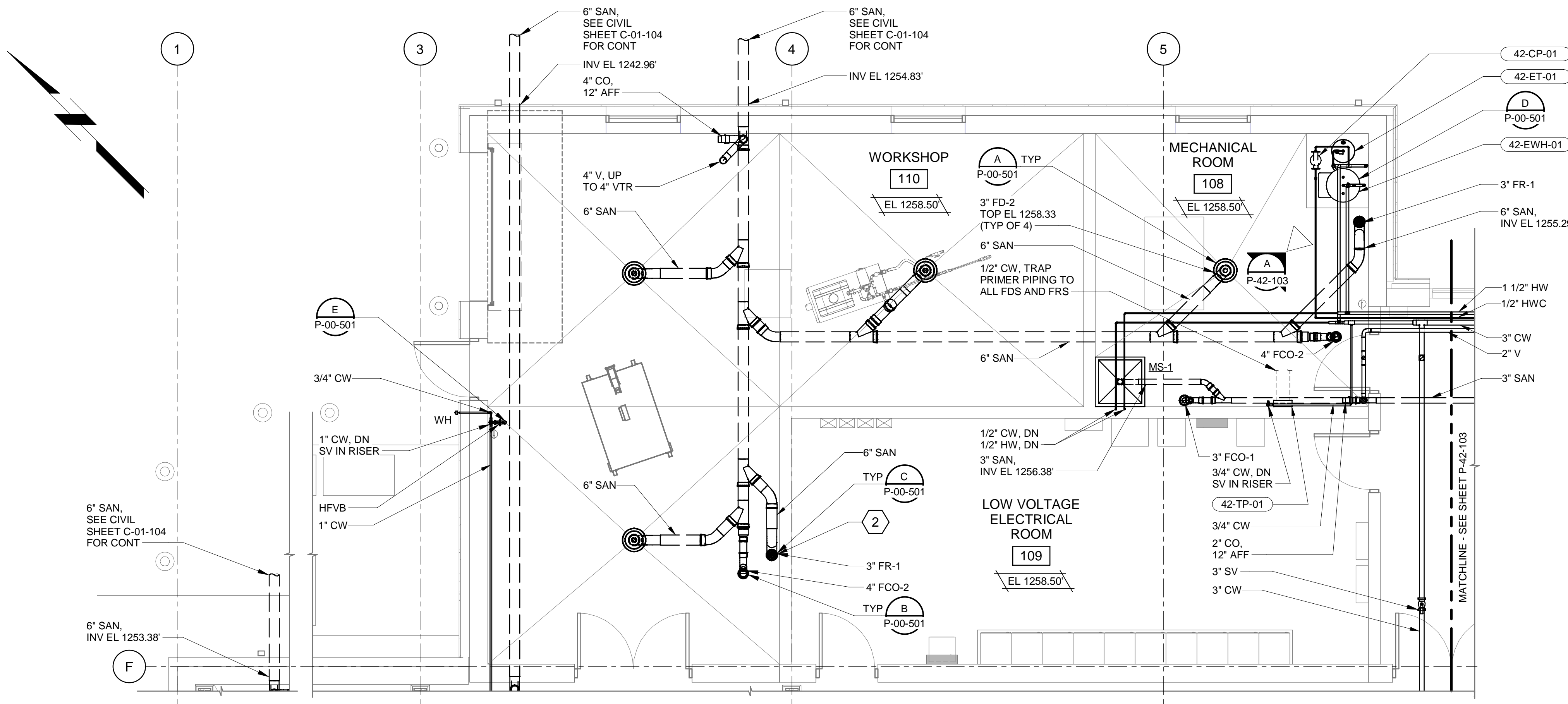
93
OF
159

GENERAL SHEET NOTES

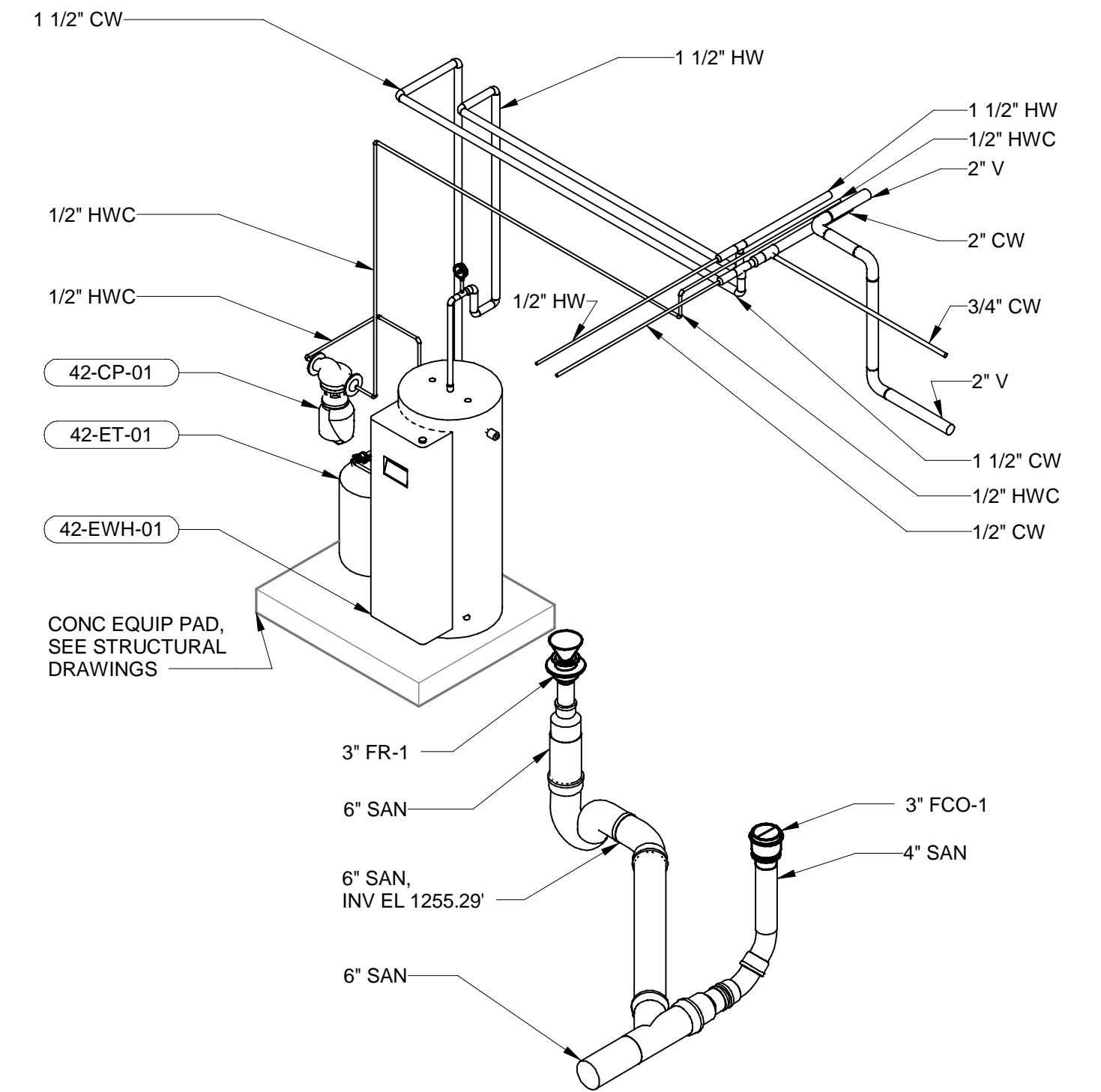
- SEE DRAWING P-00-001 FOR LEGENDS, ABBREVIATIONS, AND GENERAL NOTES.
- ALL FLOOR DRAINS AND FUNNEL RECEPTORS SHALL RECEIVE A 1/2" TRAP PRIMER CONNECTION FROM TRAP PRIMING PANEL 42-TP-01.

SHEET KEYNOTES

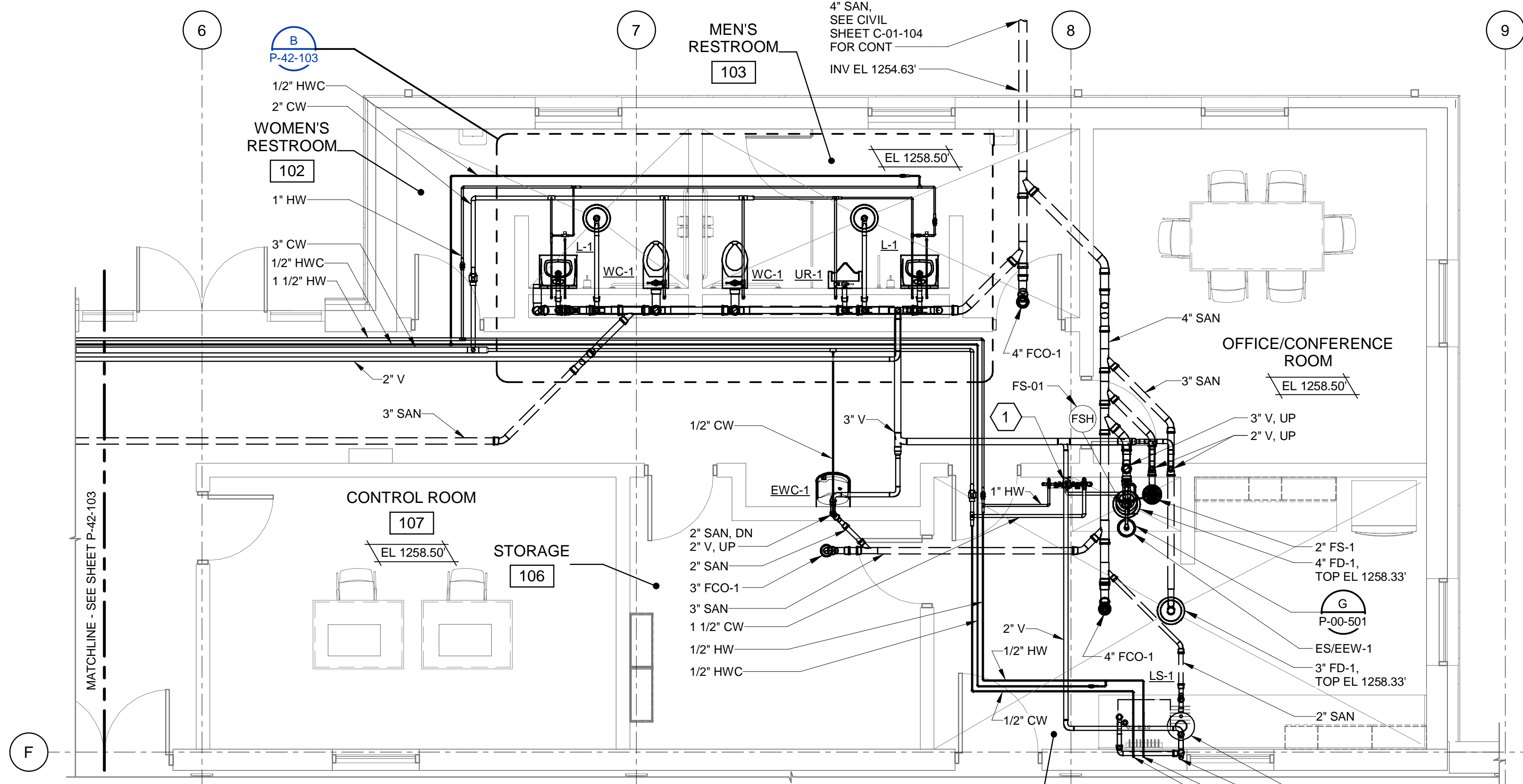
- TEPID WATER BLENDING STATION.
- FAN COIL UNIT CONDENSATE DRAIN DISCHARGE OUTLET INDIRECTLY TO OVER FUNNEL RECEPTOR. PROVIDE 1" AIR GAP.



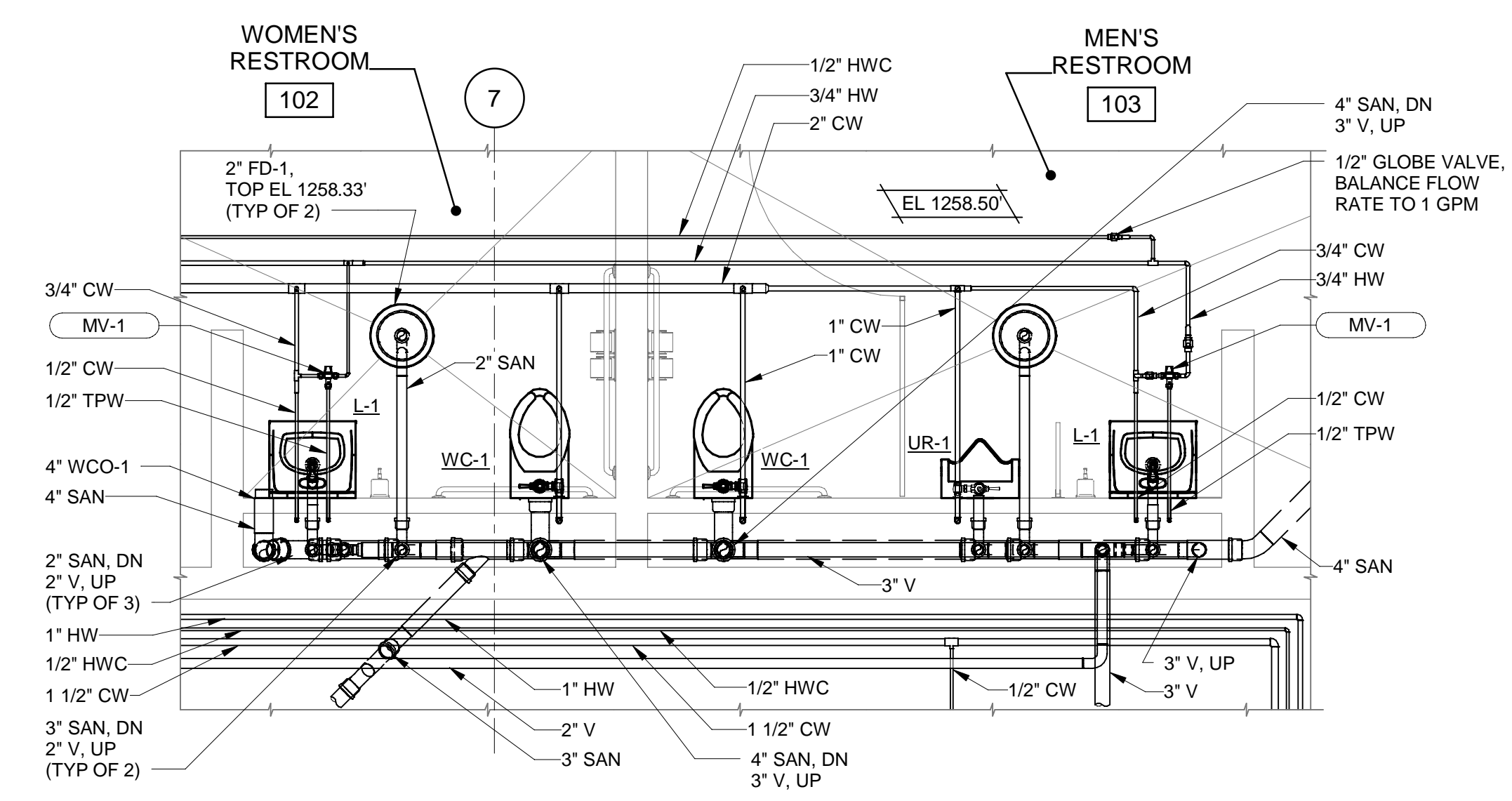
ENLARGED PLAN
1/4" = 1'-0"



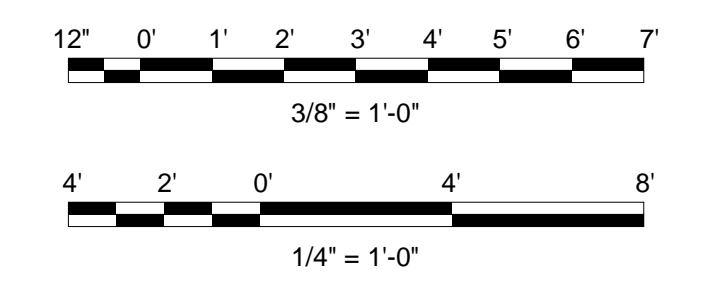
DETAIL - 3D VIEW-SOUTH WEST
NO SCALE



ENLARGED PLAN
1/4" = 1'-0"



DETAIL - ENLARGED PLAN
3/8" = 1'-0"



(SCALE BAR IS 4" AT FULL SCALE)

PLOTTED: 1/20/2023 7:33:36 AM
FILE: BIM_360/405654 - BWD Western Corridor Pump Station/405654-42-PUMP STATION.rvt
D11000

GENERAL SHEET NOTES

- SEE DRAWING P-00-001 FOR LEGENDS, ABBREVIATIONS, AND GENERAL NOTES.



Black & Veatch Corporation
Kansas City, Missouri



THIS DOCUMENT WAS
ORIGINALLY ISSUED AND
SEALED ON JANUARY 24,
2023 BY MICHELE F.
ROTH, A LICENSED
PROFESSIONAL
ENGINEER IN THE STATE
OF ARKANSAS, E-17959

BEAVER
WATER
DISTRICT

WESTERN CORRIDOR
PUMP STATION

100% SET

REVISIONS AND RECORD OF ISSUE

DESIGNED:	SAM
DETAILED:	YBM
CHECKED:	ABG
APPROVED:	MFR
DATE:	JANUARY 24, 2023
PROJECT NO.:	405654

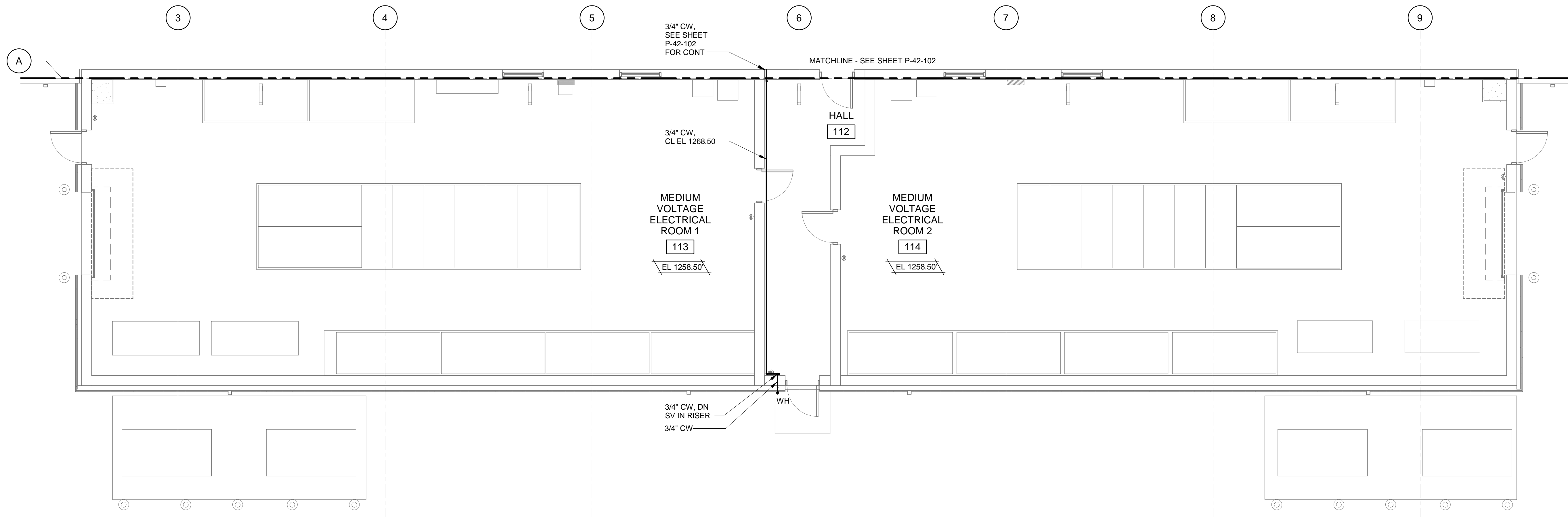
PUMP STATION

PLUMBING

OPERATING FLOOR PLAN
- ELECTRICAL WING

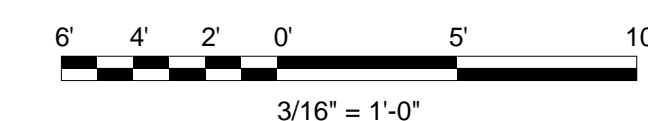
P-42-104

94
OF
159



ENLARGED PLAN

3/16" = 1'-0"



(SCALE BAR IS 4" AT FULL SCALE)

PIPING ACCESSORIES SCHEDULE				
UNIT NUMBER	MANUFACTURER	MODEL	DESCRIPTION	NOTES
FCO-1	SMITH	4111 SERIES	HEAVY DUTY FLOOR CLEANOUT, SECURED ROUND ADJUSTABLE NICKEL BRONZE TOP.	---
FCO-2	SMITH	4240 SERIES	HEAVY DUTY FLOOR CLEANOUT WITH ADJUSTABLE TRACTOR COVER.	---
FD-1	SMITH	2005-A SERIES	MEDIUM DUTY CAST IRON FLOOR DRAIN, ADJUSTABLE TOP, NICKEL BRONZE ROUND GRATE W/ TRAP PRIMER.	---
FD-2	SMITH	2310 SERIES	MEDIUM DUTY CAST IRON FLOOR DRAIN, ADJUSTABLE TOP, LOOSE SET CAST IRON GRATE W/ TRAP PRIMER.	---
FD-3	SMITH	2310-D SERIES	MEDIUM DUTY CAST IRON FLOOR DRAIN, ADJUSTABLE TOP, DOME GRATE.	---
FR-1	SMITH	3800 SERIES	MEDIUM CAST IRON FUNNEL RECEPTOR, WATER STOP FLANGE, THREADED OR NO-HUB CONNECTION.	---
FS-1	SMITH	3040 SERIES	CAST IRON FLOOR SINK, 8" DIAMETER TOP, DOME BOTTOM STRAINER.	---
GCO-1	SMITH	4240 SERIES	HEAVY DUTY FLOOR CLEANOUT WITH ADJUSTABLE TRACTOR COVER.	---
MV-1	SYMMONS	MAXLINE 5-225-CK	THERMOSTATIC MIXING VALVE, 1/2" BODY, 0.5 GPM MINIMUM FLOW, 7.5 GPM FLOW AT 20 PSI MAXIMUM DIFFERENTIAL PRESSURE, INITIAL SETPOINT 110 F.	---

PLUMBING EQUIPMENT SCHEDULE					
UNIT NUMBER	MANUFACTURER	MODEL	DESCRIPTION	APPROX WEIGHT (LBS)	NOTES
42-CP-01	BELL & GOSSETT	NBF-22U	IN-LINE HOT WATER CIRCULATING PUMP, 1.0 GPM, 7 FEET HEAD, 120 VOLT, 1 PHASE, 60 HZ.	9	---
42-ET-01	AMTROL THERM-X-TROL	ST-C SERIES	EXPANSION TANK, PIPELINE MOUNTED, 17.5 GALLON, PRECHARGE TO 80 PSIG.	21	---
42-EWH-01	STATE	CSB SERIES	ELECTRIC WATER HEATER, COMMERCIAL GRADE, 119 GALLONS STORAGE, 98 GPH RECOVER AT 100 F RISE, 24 KW, 480 VOLT, 3 PHASE, 60 HZ.	390	---
42-NT-01	ORION	STYLE 5	NEUTRALIZATION TANK, 5 GALLON, 2" INLET AND OUTLET, 1 1/2" VENT CONNECTION.	19	---
42-TP-01	PRECISION PLUMBING PRODUCTS	INC. PRIME-TIME PT-12	ELECTRONIC TRAP PRIMING MANIFOLD, SURFACE MOUNTED, 3/4" NPT INLET, 1/2" TUBE CONNECTIONS, 120 VOLT, 1 PHASE, 60Hz, SERVE FLOOR DRAIN IN MECHANICAL ROOM AND REST ROOM (12 CONNECTION).	2	---
42-TP-02	PRECISION PLUMBING PRODUCTS	INC.PRIME-TIME PT-6	ELECTRONIC TRAP PRIMING MANIFOLD, SURFACE MOUNTED, 3/4" NPT INLET, 1/2" TUBE CONNECTIONS, 120 VOLT, 1 PHASE, 60Hz, SERVE FLOOR DRAIN IN PUMP ROOM (6 CONNECTION).	2	---
42-TP-03	PRECISION PLUMBING PRODUCTS	INC.PRIME-TIME PT-8	ELECTRONIC TRAP PRIMING MANIFOLD, SURFACE MOUNTED, 3/4" NPT INLET, 1/2" TUBE CONNECTIONS, 120 VOLT, 1 PHASE, 60Hz, SERVE FLOOR DRAIN IN PUMP ROOM (8 CONNECTION).	2	---
42-TP-04	PRECISION PLUMBING PRODUCTS	INC.PRIME-TIME PT-8	ELECTRONIC TRAP PRIMING MANIFOLD, SURFACE MOUNTED, 3/4" NPT INLET, 1/2" TUBE CONNECTIONS, 120 VOLT, 1 PHASE, 60Hz, SERVE FLOOR DRAIN IN PUMP ROOM (8 CONNECTION).	2	---

PLUMBING FIXTURE SCHEDULE									
UNIT NUMBER	MANUFACTURER	MODEL	DESCRIPTION	WATER (IN)		WASTE (IN)		APPROX WEIGHT (LBS)	NOTES
				HOT	COLD	WASTE	VENT		
ES/EEW-1	HAWS	8336	EMERGENCY SHOWER/EYE WASH COMBINATION, PEDESTAL MOUNTED, CORROSION RESISTANT, 1 1/4" IPS SUPPLY, 120 VOLT.	---	1 1/4"	---	---	---	2,3
EWC-1	ELKAY	EZS8L	ELECTRIC WATER COOLER, WALL MOUNTED, 8 GPH, 120 VOLT, 1 PHASE, 60 HZ.	---	1/2"	1 1/2"	1 1/2"	---	1
L-1	AMERICAN STANDARD	LAV: 0355.012 LUCERNE FAUCET: 605B.205 INNSBROOK	LAVATORY, WALL HUNG 21"x18", WITH SENSOR OPERATED, HARD-WIRED, 0.5 GPM AERATED FAUCET AND POP-UP DRAIN.	1/2"	1/2"	2"	2"	---	1,4
LS-1	---	---	LAB SINK, SEE LAB SPEC SECTION FOR DETAILS.	1/2"	1/2"	2"	2"	---	---
MS-1	SINK: STERN-WILLIAMS FAUCET: AMERICAN STANDARD	SINK: SBC-1725-BP2 FAUCET: 8354.112	MOP SINK, 32"x32", 12" DEEP, FLOOR MOUNTED, DIAGONAL FRONT, TWO SPLASH PANELS.	1/2"	1/2"	3"	2"	---	---
UR-1	AMERICAN STANDARD	CHINA: 6590.001 WASHBROOK VALVE: 606B.051	URINAL, WALL MOUNT, HARD-WIRED FLUSH VALVE, 0.5 GALLON/FLUSH MAX.	---	3/4"	2"	1 1/2"	---	1,4
WC-1	AMERICAN STANDARD	2257.101 AND 606B.161	WATER CLOSET, WALL MOUNT, HARD-WIRED FLUSH VALVE, 120V CONNECTION, WITH TRANSFORMER, 1.6 GALLON/FLUSH MAX.	---	1"	4"	3"	---	1,4

PRESSURE REDUCING VALVE SCHEDULE													
UNIT NUMBER	LOCATION	MANUFACTURER	MODEL	SERVICE	TYPE	FLOW RATE (WATER-GPM)			REDUCED PRESSURE SETPOINT(PSI)	INLET PRESSURE (PSI)		MINIMUM PRESSURE AT MAXIMUM FLOW (PSI)	NOTES
						MINIMUM	MAXIMUM	ORDINARY		MINIMUM	MAXIMUM		
42-PRV-01	PUMP STATION	CLA-VAL	MODEL 50-01	WATER	DIRECT ACTING	60	85	60	80.00	80	120	72	---

GENERAL SHEET NOTES

- SEE DRAWING P-00-001 FOR LEGENDS, ABBREVIATIONS AND GENERAL NOTES.

SCHEDULE NOTES

PIPING ACCESSORIES SCHEDULE:
NOTES: NONE

PLUMBING EQUIPMENT SCHEDULE:
NOTES: NONE

PLUMBING FIXTURE SCHEDULE:

- NOTES:
- FIXTURE AND INSTALLATION SHALL BE ADA COMPLIANT.
 - TEMPERED WATER SUPPLY.
 - REMOTE ALARM SYSTEM, ONE FLOW SWITCH LOCATED IN THE COMMON TEMPERED WATER SUPPLY LINE, UPSTREAM OF ALL BRANCHES TO EMERGENCY FIXTURES.
 - PROVIDE 120V TRANSFORMER MODULE(S) AS REQUIRED FOR NUMBER OF FIXTURES INSTALLED.

PRESSURE REDUCING VALVE SCHEDULE:
NOTES: NONE



Black & Veatch Corporation
Kansas City, Missouri



THIS DOCUMENT WAS
ORIGINALLY ISSUED AND
SEALED ON JANUARY 24,
2023 BY MICHELE F.
ROTH, A LICENSED
PROFESSIONAL
ENGINEER IN THE STATE
OF ARKANSAS, E-17959

BEAVER
WATER
DISTRICT

WESTERN CORRIDOR
PUMP STATION

100% SET

REVISIONS AND RECORD OF ISSUE

DESIGNED: SAM
DETAILED: YBM
CHECKED: ABG
APPROVED: MFR
DATE: JANUARY 24, 2023
PROJECT NO.: 405654

PUMP STATION

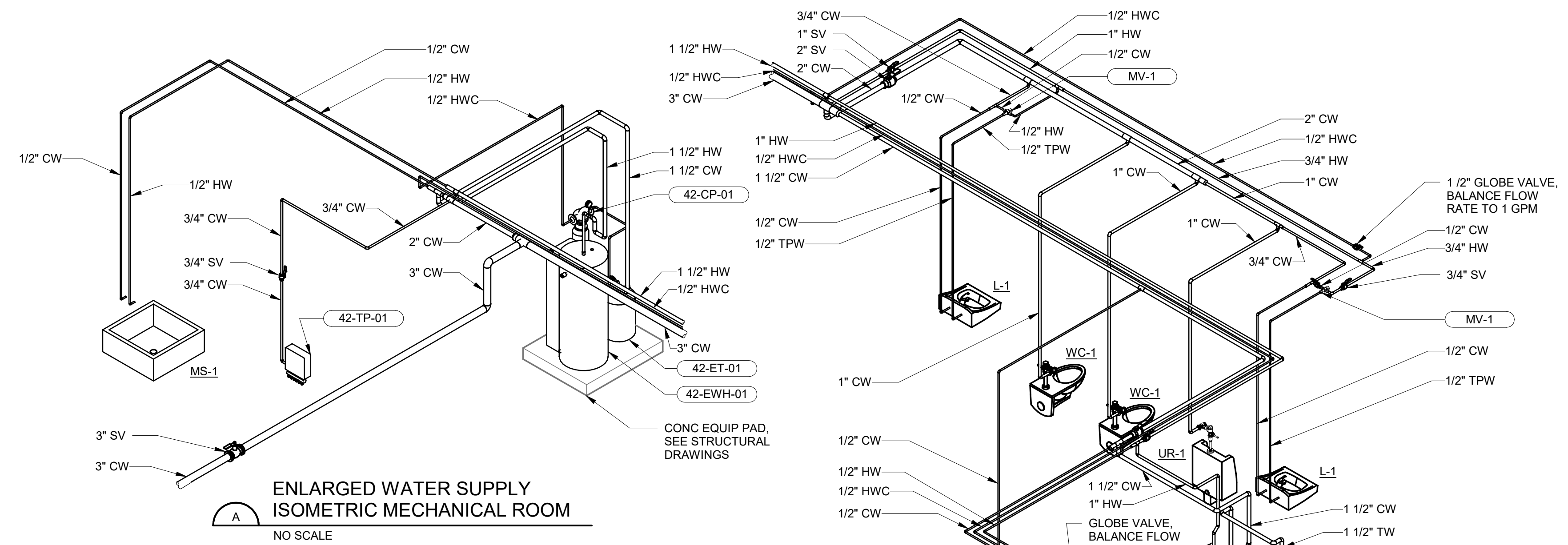
PLUMBING

PLUMBING - SCHEDULES

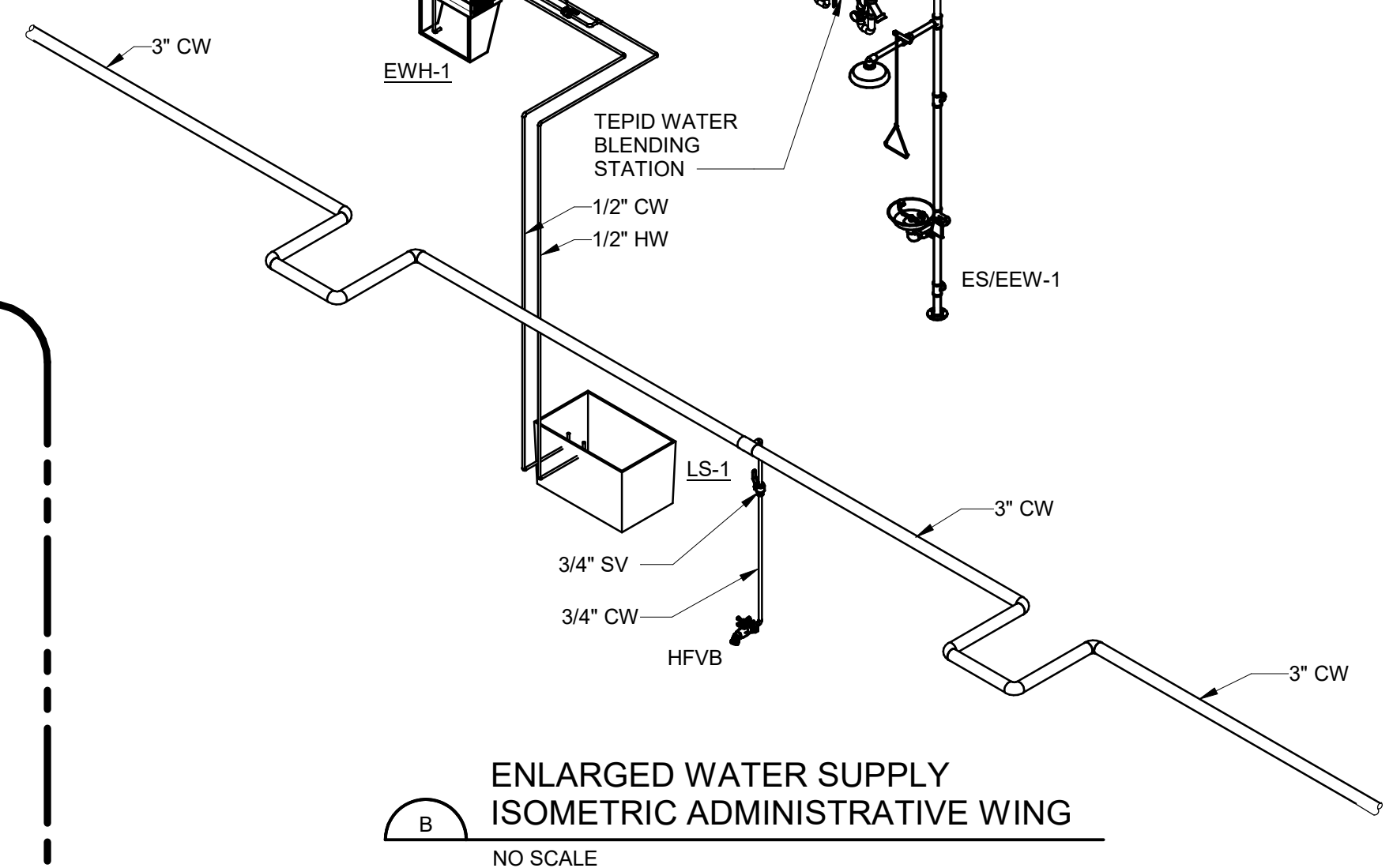
P-42-601

95
OF
159

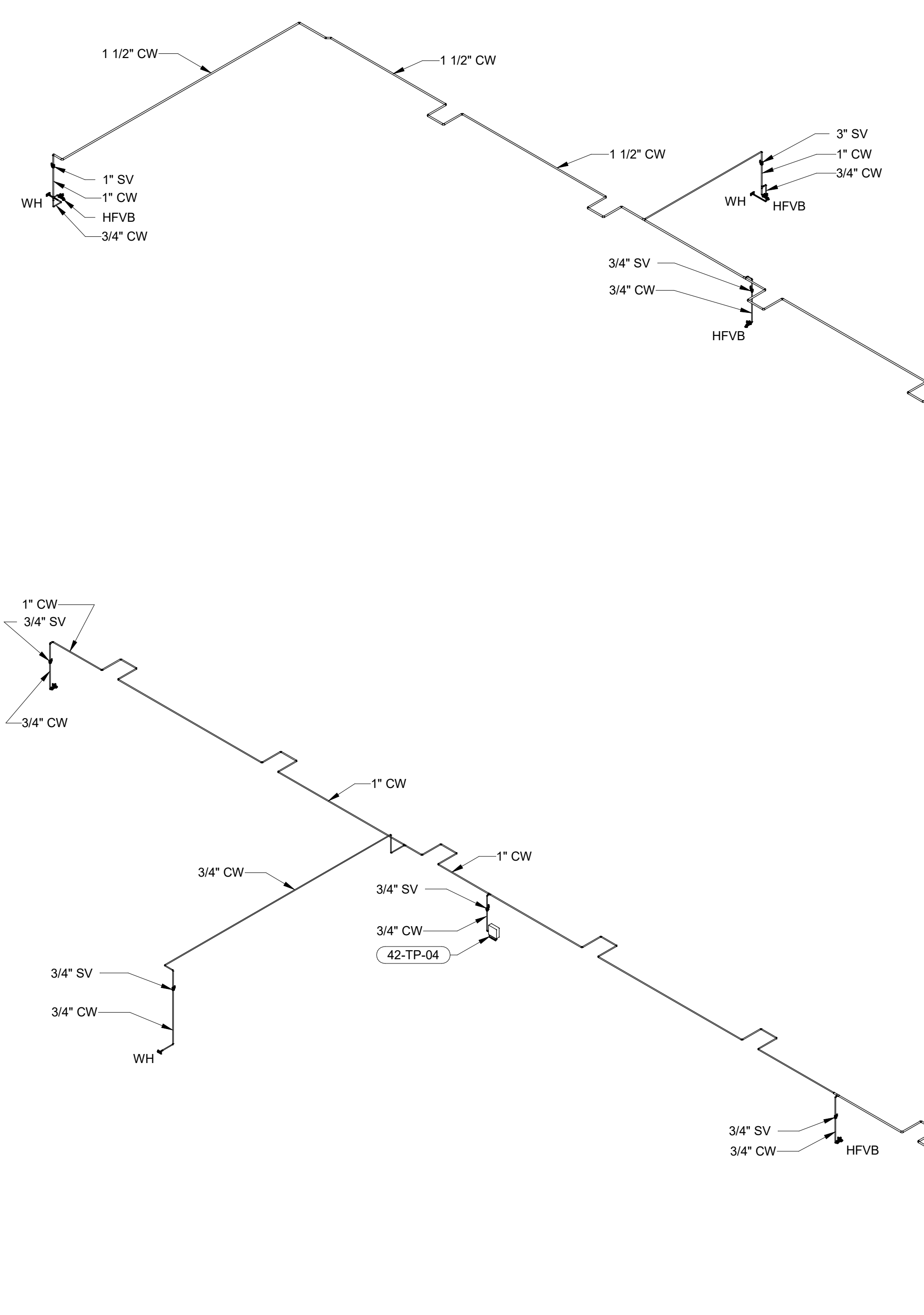
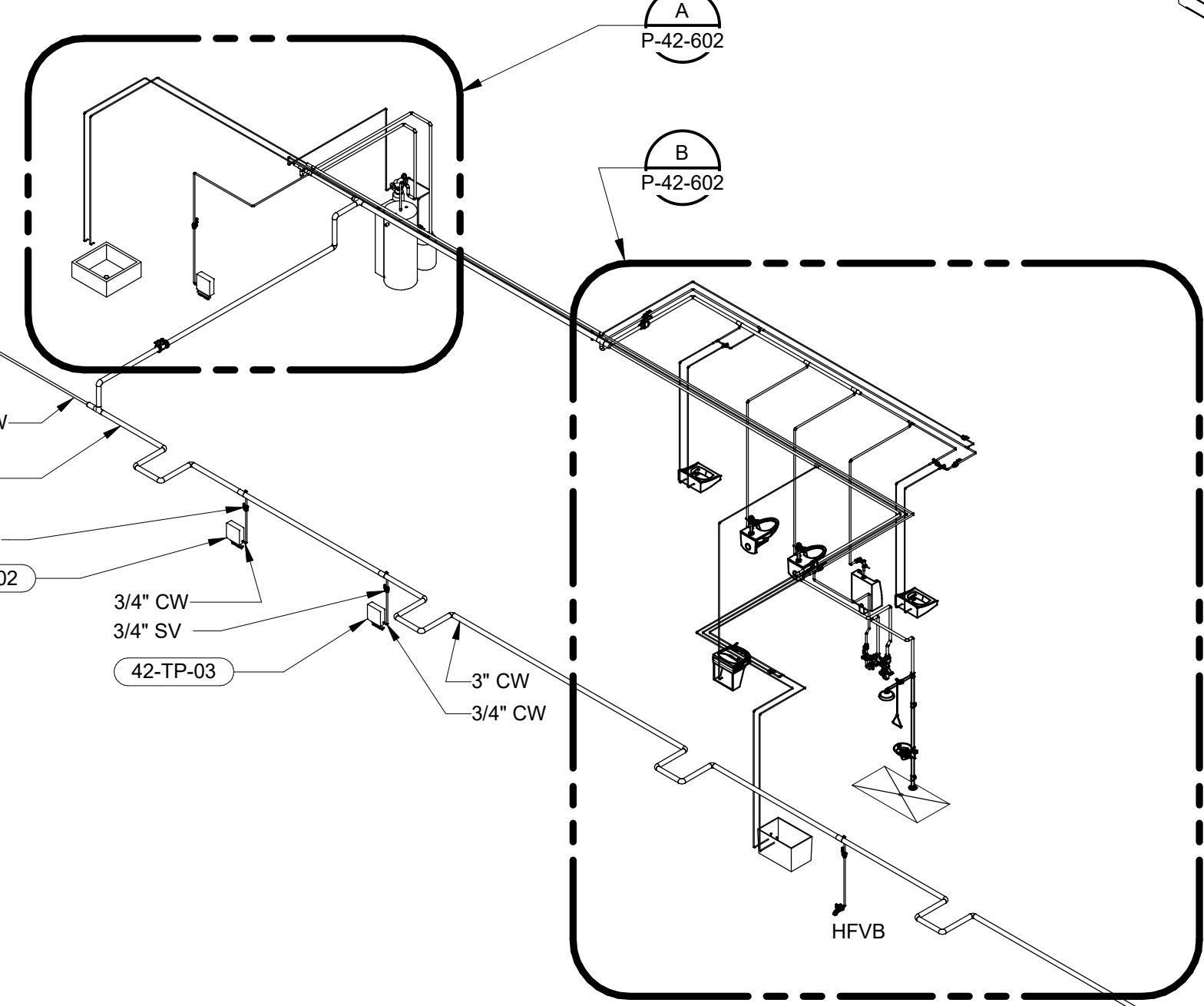
REVISIONS AND RECORD OF ISSUE	
DESIGNED:	SAM
DETAILED:	YBM
CHECKED:	ABG
APPROVED:	MFR
DATE:	JANUARY 24, 2023
PROJECT NO.:	405654



ENLARGED WATER SUPPLY
ISOMETRIC MECHANICAL ROOM
NO SCALE



ENLARGED WATER SUPPLY
ISOMETRIC ADMINISTRATIVE WING
NO SCALE



WATER SUPPLY ISOMETRIC
NO SCALE

THIS DOCUMENT WAS
ORIGINALLY ISSUED AND
SEALED ON JANUARY 24,
2023 BY MICHELE F.
ROTH, A LICENSED
PROFESSIONAL
ENGINEER IN THE STATE
OF ARKANSAS, E-17959

BEAVER
WATER
DISTRICT

WESTERN CORRIDOR
PUMP STATION

100% SET

REVISIONS AND RECORD OF ISSUE	
DESIGNED:	SAM
DETAILED:	YBM
CHECKED:	ABG
APPROVED:	MFR
DATE:	JANUARY 24, 2023
PROJECT NO.:	405654

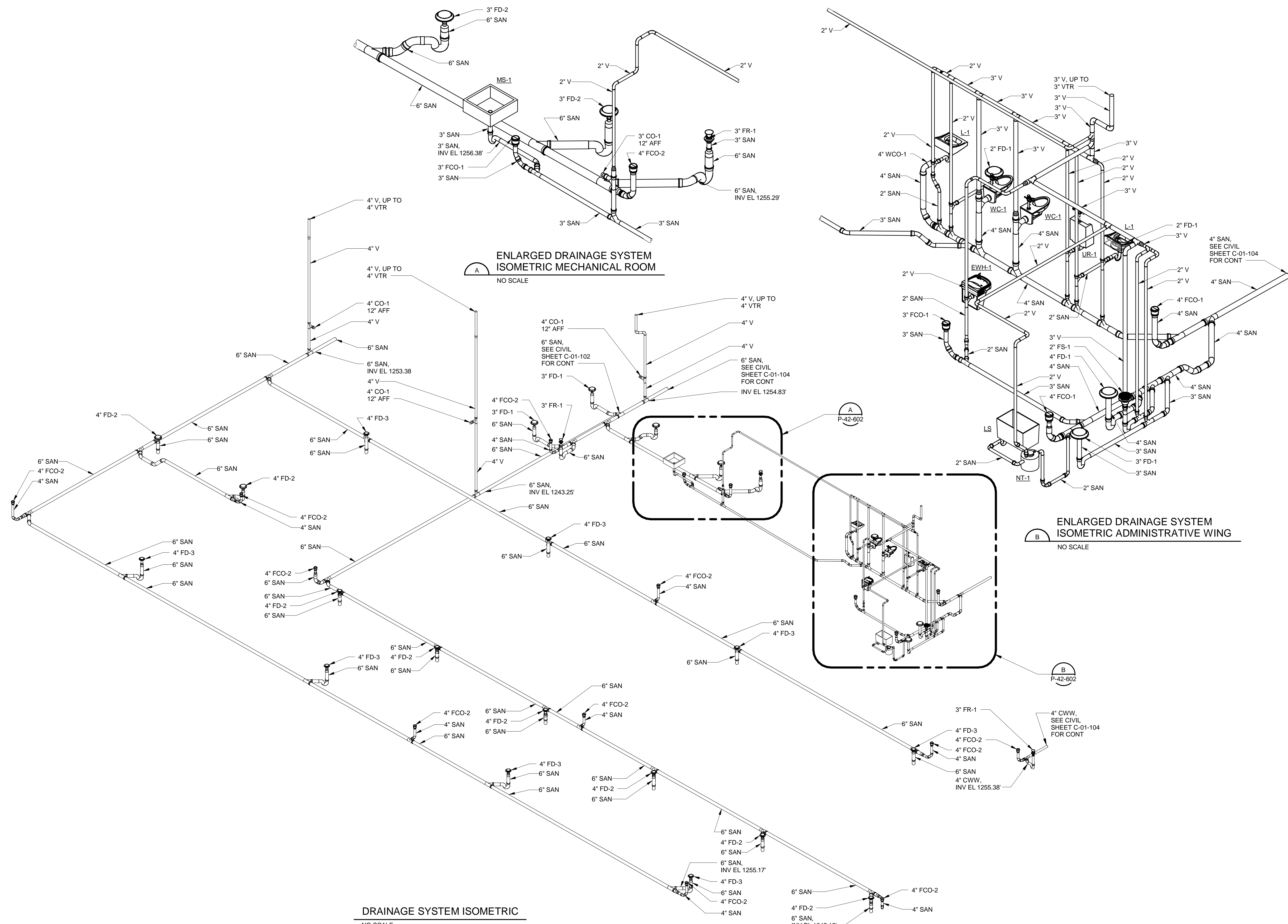
PUMP STATION

PLUMBING

DRAINAGE SYSTEM
ISOMETRIC AND
ENLARGED ISOMETRICS

P-42-902

97
OF
159



PLOTTED: 1/20/2023 7:33:46 AM
FILE: BIM_360/405654 - BWD Western Corridor Pump Station/405654-42-PUMP STATION.rvt
D11000

(SCALE BAR IS 4" AT FULL SCALE) 0 1/2 1 2 3 4

THIS DOCUMENT WAS
ORIGINALLY ISSUED AND
SEALED ON JANUARY 24,
2023 BY MICHELE F.
ROTH, A LICENSED
PROFESSIONAL
ENGINEER IN THE STATE
OF ARKANSAS, E-17959

BEAVER
WATER
DISTRICT

WESTERN CORRIDOR
PUMP STATION

100% SET

REVISIONS AND RECORD OF ISSUE

DESIGNED:	SAM
DETAILED:	YBM
CHECKED:	ABG
APPROVED:	MFR
DATE:	JANUARY 24, 2023
PROJECT NO.:	405654

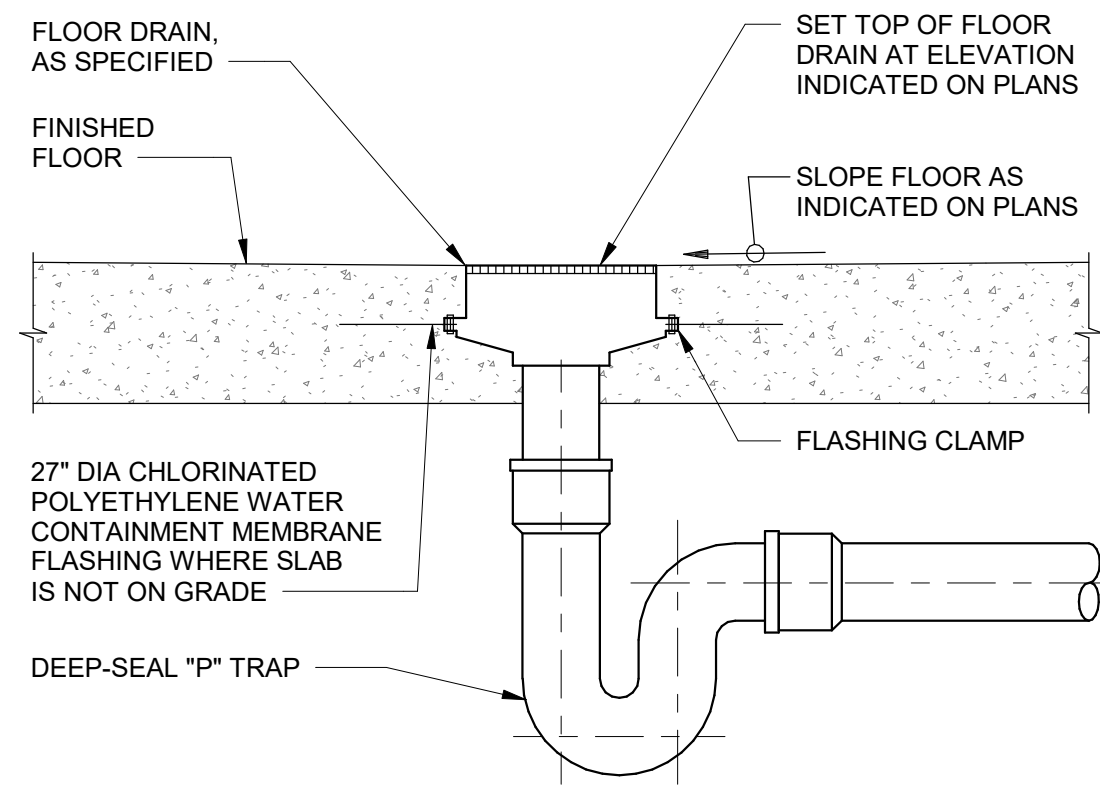
STANDARD DETAILS

PLUMBING

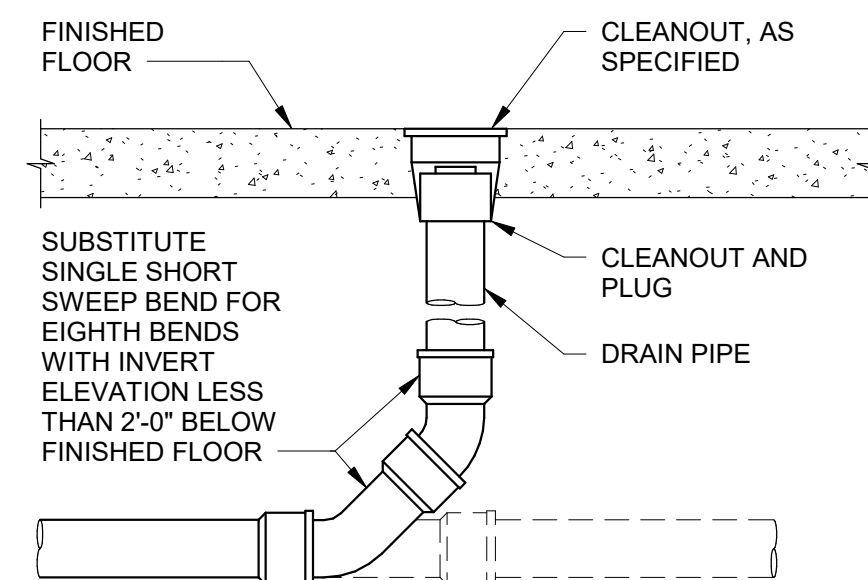
DETAILS

P-99-501

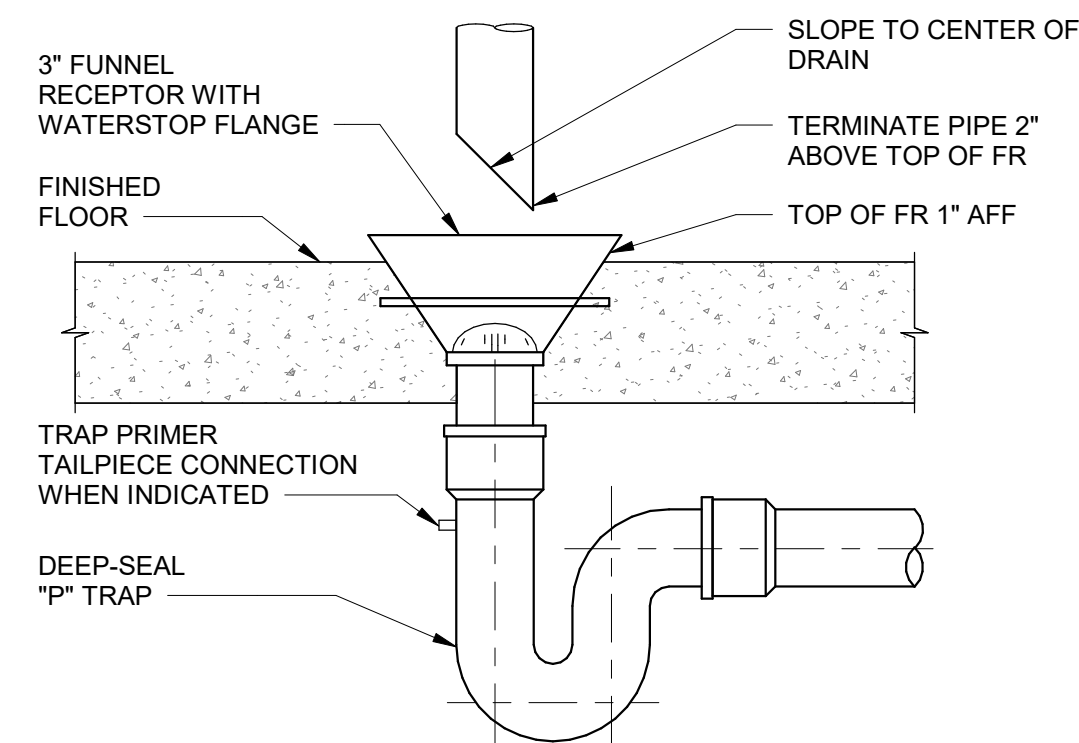
98
OF
159



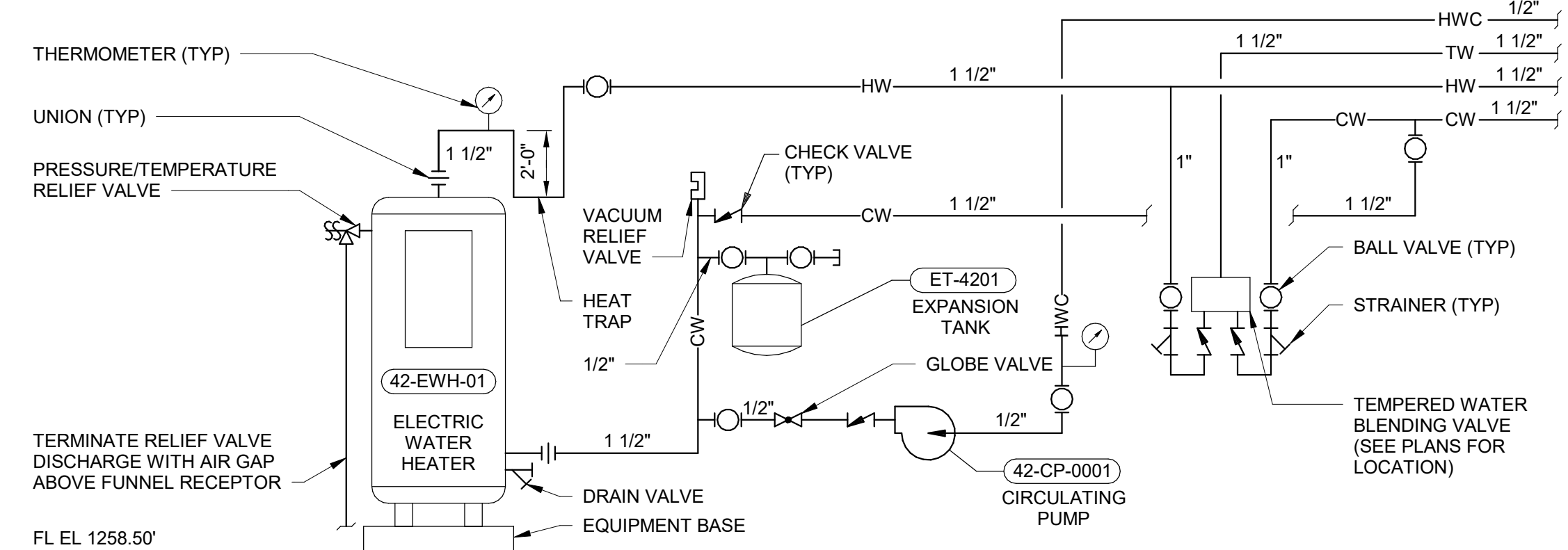
A FLOOR DRAIN - NEW FLOOR
NO SCALE



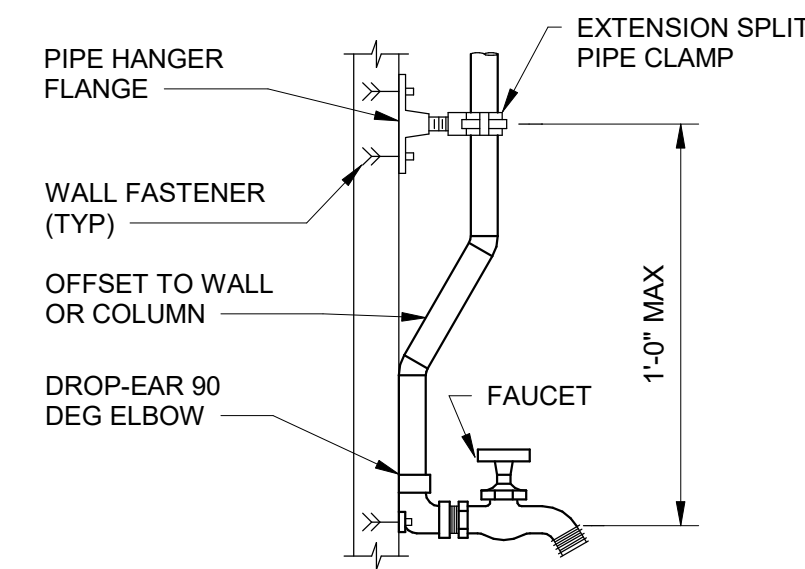
B FLOOR CLEANOUT - NEW FLOOR
NO SCALE



C FUNNEL DRAIN - NEW FLOOR
NO SCALE

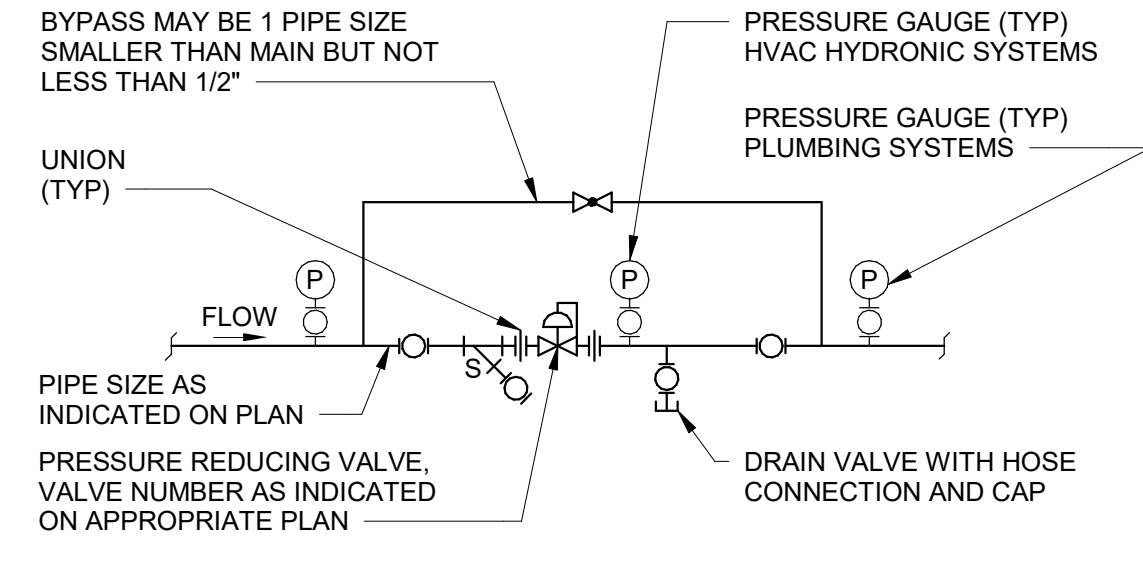


D HOT WATER CIRCULATING SYSTEM SCHEMATIC
NO SCALE



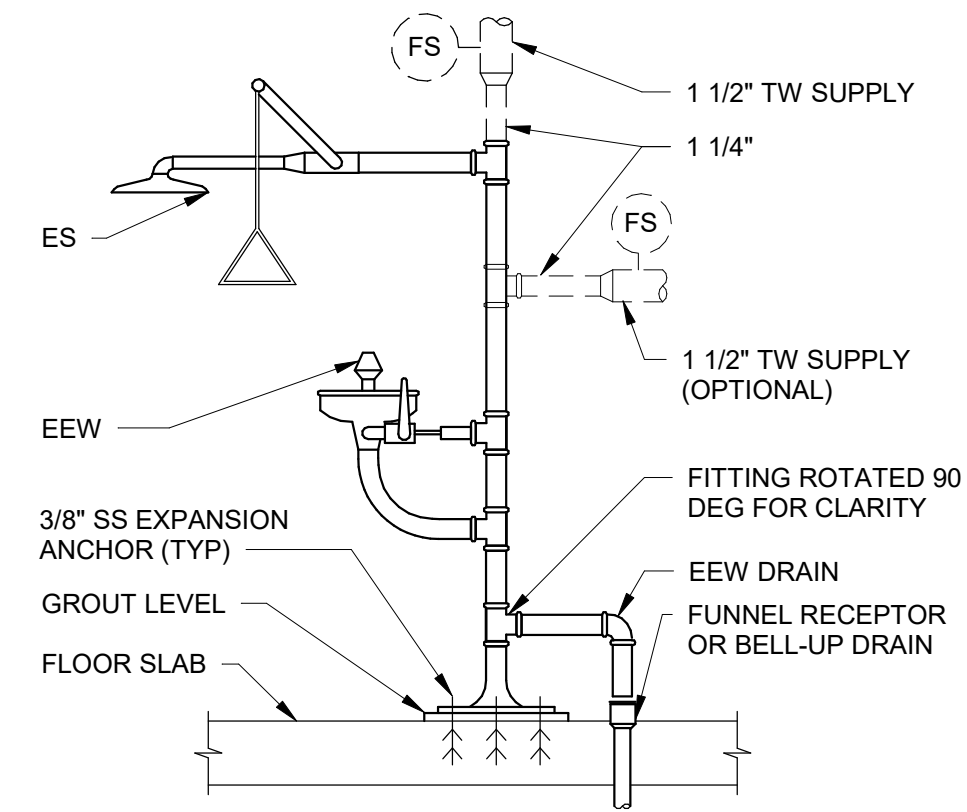
NOTES:
1. PROVIDE VACUUM BREAKER ON HOSE FAUCETS WHERE INDICATED ON THE PLANS.
2. SEE PLANS AND SPECIFICATIONS FOR PIPE DIAMETERS.

E HOSE FAUCET PIPE MOUNTING
NO SCALE

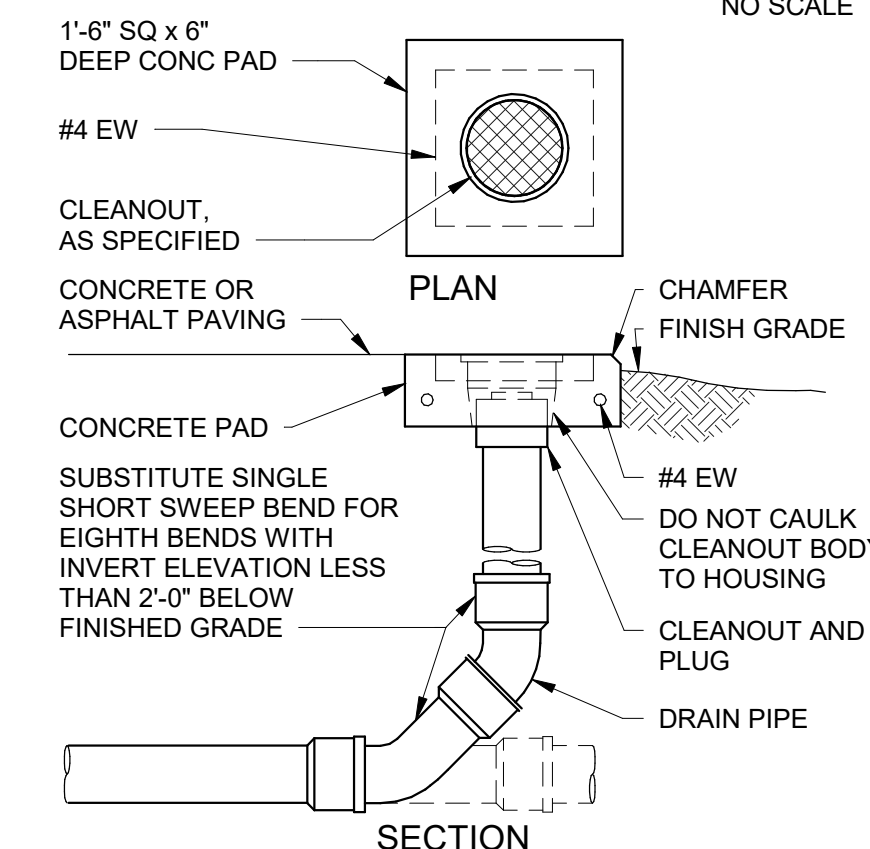


NOTES:
1. PROVIDE REDUCING FITTINGS AT PRESSURE REDUCING VALVE AND ON BYPASS AS REQUIRED.
2. PROVIDE VALVES PER SPECIFICATIONS.

F PRESSURE REDUCING STATION
NO SCALE



G EMERGENCY SHOWER AND EYE WASH
NO SCALE



H GRADE CLEANOUT
NO SCALE