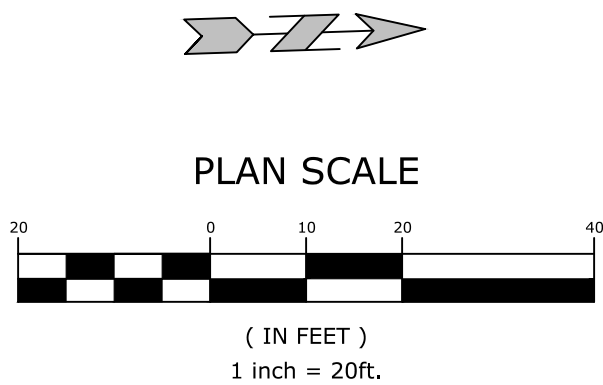
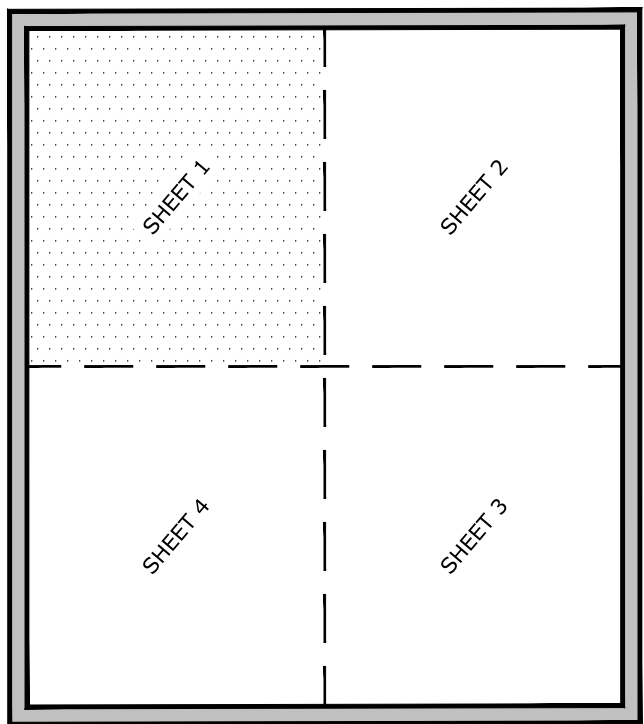


GENERAL UTILITY NOTES

- ALL WATER MAINS SHALL BE PVC (C-900; DR-14), UNLESS OTHERWISE SPECIFIED ON THE PLANS. SIZE AS NOTED ON THE PLANS AND TO MAINTAIN 36" OF COVER (MINIMUM).
ALL SEWER MAINS SHALL BE PVC (SDR-26), UNLESS OTHERWISE SPECIFIED ON THE PLANS. SIZE AS NOTED ON THE PLANS AND TO MAINTAIN 48" OF COVER (MINIMUM).
ALL FIRE / FDC LINES SHALL BE DUCTILE IRON, UNLESS OTHERWISE SPECIFIED ON THE PLANS. SIZE AS NOTED ON THE PLANS AND TO MAINTAIN 36" OF COVER (MINIMUM).
ALL DOMESTIC WATER SERVICE LINES AFTER THE METER TO BUILDINGS SHALL BE POLYETHYLENE PIPE, UNLESS OTHERWISE SPECIFIED ON THE PLANS. SIZE AS NOTED ON THE PLANS AND TO MAINTAIN 36" OF COVER (MINIMUM).
ALL DOMESTIC SANITARY SEWER SERVICE LINES SHALL BE PVC (SDR-26), OR OTHERWISE SPECIFIED ON THE PLANS. SIZE AS NOTED ON THE PLANS AND TO MAINTAIN 36" OF COVER (MINIMUM).
- EXISTING UTILITIES SHOWN ON PLANS HAVE BEEN SHOWN IN THEIR APPROXIMATE LOCATIONS PER AVAILABLE INFORMATION.
- CONSTRUCTION SHALL NOT START ON ANY UTILITY SYSTEM UNTIL WRITTEN APPROVAL HAS BEEN RECEIVED FROM THE APPROPRIATE UTILITY AUTHORITIES AND THE OWNER, AND THE CONTRACTOR HAS BEEN NOTIFIED BY MCLELLAND CONSULTING ENGINEERS, INC.
- CONTRACTOR SHALL NOT OPEN, TURN OFF, INTERFERE WITH, OR ATTACH ANY PIPE OR HOSE TO OR TAP ANY WATER MAIN UNLESS DULY AUTHORIZED TO DO SO. ANY ADVERSE CONSEQUENCES OF ANY SCHEDULED OR UNSCHEDULED DISRUPTIONS OF SERVICE TO WASHINGTON COUNTY DETENTION CENTER ARE TO BE THE LIABILITY OF THE CONTRACTOR. MCLELLAND CONSULTING ENGINEERS, INC. AND THE OWNER ARE TO BE HELD HARMLESS.
- ALL TRENCHING, BACKFILLING AND PIPE LAYING IS TO MEET ALL OSHA REQUIREMENTS.
- THE LOCATION, DESCRIPTION AND SIZE OF ALL ABOVE-GROUND AND UNDER-GROUND FACILITIES, STRUCTURES AND UTILITIES HAVE BEEN DETERMINED WITH DUE CARE AND DILIGENCE, USING CURRENT TECHNIQUES, EQUIPMENT AND PROPER ACCURACY CONTROL PROCEDURES. HOWEVER, INFORMATION SHOWN HEREON IS NOT WARRANTED TO BE CORRECT IN EVERY DETAIL BECAUSE OF INACCURACIES IN OR LACK OF EXISTING DATA OR MAPS AND THE INABILITY TO VERIFY IN THE FIELD. PERSONS USING INFORMATION CONTAINED HEREON ARE HEREBY CAUTIONED ACCORDINGLY.
- REFER TO BUILDING PLANS FOR SITE LIGHTING ELECTRICAL PLANS.
- ALL WATER & SEWER DESIGNS ARE SUBJECT TO THE PROJECT SPECIFICATIONS.
- ANY DAMAGE TO THE EXISTING PUBLIC STREET DUE TO CONSTRUCTION SHALL BE REPAIRED / REPLACED AT THE OWNER'S / DEVELOPER'S EXPENSE.
- ALL UTILITY SERVICE LINES TO BE CONNECTED TO NEW MAINS OR RELOCATED AS NEEDED FOR INSTALLATION OF STORM SEWER SYSTEM.
- ALL CONDUITS PLACED BY CONTRACTOR MUST HAVE 24" OF COVER AT FINAL GRADE AND MARKED WITH POSTS TO IDENTIFY THE ENDS OF CONDUITS. THERE MUST BE A MINIMUM SEPARATION OF 12" BETWEEN ELECTRICAL CONDUITS AND CONDUITS FOR OTHER UTILITIES.
- SERVICE TAPS ON UTILITY MAINS (PROPOSED AND / OR EXISTING) SHALL BE MADE BY THE CONTRACTOR.
- ALL UNDERGROUND LINES SHALL BE INSPECTED BY THE ENGINEER, OR HIS REPRESENTATIVE, PRIOR TO BACK FILLING.
- PRIVATE DOMESTIC SANITARY SEWER SERVICE LINE TRENCHING AND BEDDING SHALL BE INSTALLED PER DETAIL 41N.
- PRIVATE DOMESTIC WATER SERVICE LINE AFTER METER TRENCHING AND BEDDING SHALL BE INSTALLED PER DETAIL 40Q.
- ALL WATER LINE DIMENSIONS SHOWN ARE TO CENTER OF PIPE OR FITTING; ALL SEWER LINE DIMENSIONS ARE SHOWN TO CENTER OF MANHOLE OR CENTER OF PIPE.
- TESTING OF WATER AND SEWER LINES SHALL BE AT THE CONTRACTOR'S EXPENSE.
- TOPS OF EXISTING MANHOLES SHALL BE RAISED AS NECESSARY TO BE EITHER FLUSH WITH FINISHED GRADES IN PAVED AREAS, OR 4" ABOVE FINISHED GRADES IN UNPAVED AREAS.
TOPS OF PROPOSED MANHOLES SHALL BE FLUSH WITH FINISHED GRADES IN PAVED AREAS, OR 4" ABOVE FINISHED GRADES IN UNPAVED AREAS.
- ALL UTILITIES UNDER PAVED AREAS SHALL RECEIVE CLASS 7 BASE BACKFILL FULL DEPTH.
- MAINTAIN MINIMUM HORIZONTAL SEPARATION OF 10' BETWEEN WATER AND SEWER MAINS AND 5' BETWEEN OTHER UNDERGROUND UTILITIES SUCH AS STORM SEWER, ELECTRICAL, GAS, DOMESTIC WATER / SEWER SERVICE LINES, AND CONDUITS.
- ALL EXISTING WATER, GAS AND / OR ELECTRICAL METERS AS NOTED TO BE ABANDONED AND / OR REMOVED PER THE DEMOLITION PLAN WITHIN THE PROJECT AREA ARE TO BE RETURNED TO THE APPROPRIATE AUTHORITY.
- COORDINATION OF ALL CONDUIT PLACEMENT SHALL BE MADE WITH UTILITY PROVIDERS.
- ALL WATER AND SEWER FORCE MAIN FITTINGS SHALL BE RESTRAINED THROUGH THE USE OF THRUST BLOCKING PER DETAIL 40A OR APPROVED EQUAL.
- PROPOSED UTILITIES THAT ARE TO BE BURIED IN THE SAME TRENCH SHALL BE COORDINATED WITH, AND APPROVED BY, THE INVOLVED UTILITIES PRIOR TO INSTALLATION.
- CONTRACTOR SHALL FIELD VERIFY DEPTH AND LOCATION OF ALL EXISTING UTILITIES PRIOR TO CONSTRUCTION OF PROPOSED UTILITIES.
- ALL PROPOSED UTILITIES SHALL BE CONSTRUCTED IN ACCORDANCE WITH GOVERNING AGENCY.
- CONTRACTOR IS RESPONSIBLE FOR ALL CONSTRUCTION LAYOUT AND STAKING (UNLESS APPROVED OTHERWISE BY THE ENGINEER OF RECORD).



EXISTING LEGEND

- | | | | |
|------|------------------------|---|---------------------------|
| --- | PROPERTY LINE | ⚡ | POWER POLE |
| R/W | RIGHT OF WAY | ⚡ | GUY WIRE w/ ANCHOR |
| SS | SANITARY SEWER LINE | ⚡ | GAS METER |
| W | WATER LINE | ⚡ | GAS RISER |
| GAS | GAS LINE | ⚡ | STREET LIGHT POLE |
| UGT | UNDERGROUND TELEPHONE | ⚡ | TELEPHONE PEDESTAL |
| UGE | UNDERGROUND ELECTRIC | ⚡ | CABLE TV PEDESTAL |
| UGTV | UNDERGROUND TELEVISION | ⚡ | CABLE VAULT |
| UFO | UNDERGROUND FIBER | ⚡ | ELECTRIC VAULT |
| OHE | OVERHEAD ELECTRIC | ⚡ | FIBER VAULT |
| X-X | FENCE | ⚡ | GAS VAULT |
| --- | ROAD CENTERLINE | ⚡ | TELEPHONE VAULT |
| --- | DITCH FLOWLINE | ⚡ | WATER VAULT |
| --- | EASEMENT LINE | ⚡ | SIGN (AS NOTED) |
| --- | GRAVEL LINE | ⚡ | POST (AS NOTED) |
| --- | FIRE HYDRANT | ⚡ | BENCHMARK |
| --- | WATER METER | ⚡ | FOUND IRON PIN (AS NOTED) |
| --- | WATER VALVE | ⚡ | CONTROL POINT |
| --- | WATER FAUCET | ⚡ | RR SPIKE |
| --- | SANITARY SEWER MH | ⚡ | BUSH |
| --- | CLEAN-OUT | ⚡ | DECIDUOUS TREE |
| --- | DRAINAGE MH | ⚡ | CONIFEROUS TREE |

PROPOSED LEGEND

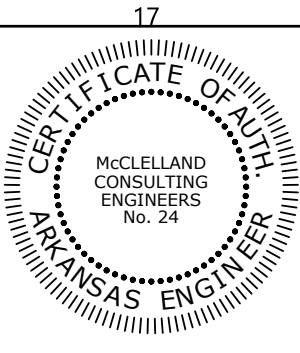
- | | |
|-----|----------------------------|
| --- | STORM DRAIN |
| --- | GAS LINE |
| --- | GAS METER |
| --- | ELECTRIC METER |
| --- | UGT |
| --- | UNDERGROUND ELECTRIC LINE |
| --- | WATER LINE |
| --- | FIRE DEPARTMENT CONNECTION |
| --- | FIRE HYDRANT |
| --- | POST INDICATOR VALVE |
| --- | SANITARY SEWER LINE |
| --- | SANITARY SEWER MANHOLE |
| --- | CLEAN-OUT |
| --- | LIGHT POLE |
| --- | CATCH BASIN |

UTILITY KEYNOTES

- FIRE SPRINKLER BUILDING ENTRY (SEE ARCHITECTURAL / MEP PLANS) - SHOULD THE FIRE DESIGN FROM THE FIRE CONSULTANT DEViate IN ANY WAY FROM THE CIVIL UTILITY SITE PLAN, THE CONTRACTOR SHALL CONTACT THE ENGINEER OF RECORD FOR COORDINATION PRIOR TO THE START OF CONSTRUCTION
- DOMESTIC WATER SERVICE BUILDING ENTRY (SEE ARCHITECTURAL / MEP PLANS)
- FIRE DEPARTMENT CONNECTION BUILDING ENTRY (SEE ARCHITECTURAL / MEP PLANS)
- FIRE DEPARTMENT CONNECTION (PER LOCAL CODES)
- POST INDICATOR VALVE (PER LOCAL CODES)
- PROPOSED WATER METER (SEE SIZE AT SYMBOL)
- TAPPING SADDLE (SEE SIZE AT SYMBOL)
- GATE VALVE WITH ADJUSTABLE VALVE BOX (SEE SIZE AT SYMBOL)
- REDUCER (SEE SIZE AT SYMBOL)
- CAP / PLUG w/ THRUST BLOCKING (SEE SIZE AT SYMBOL)
- TEE w/ THRUST BLOCKING (SEE SIZE AT SYMBOL)
- 90° BEND w/ THRUST BLOCKING (SEE SIZE AT SYMBOL)
- 45° BEND w/ THRUST BLOCKING (SEE SIZE AT SYMBOL)
- 22-1/2° BEND w/ THRUST BLOCKING (SEE SIZE AT SYMBOL)
- SANITARY SEWER CLEAN OUT
- SANITARY SEWER SERVICE BUILDING ENTRY (SEE ARCHITECTURAL / MEP PLANS)
- SANITARY SEWER CAP / PLUG (SEE SIZE AT SYMBOL)
- GREASE TRAP w/ CLEAN OUTS (SEE ARCHITECTURAL / MEP PLANS)
- MAINTAIN 18" VERTICAL SEPARATION (MIN.)
- LINT TRAP w/ CLEAN OUTS (SEE ARCHITECTURAL / MEP PLANS)
- CONTRACTOR TO PROVIDE 10' ENCASUREMENT CENTERED ON WALL
- SECURITY GATE CARD READER (SEE ELECTRICAL / SECURITY SYSTEM PLANS)
- SECURITY GATE OPERATOR (SEE ELECTRICAL PLANS)
- CONTRACTOR TO CORE AND CONNECT TO EXISTING GRINDER STATION

UTILITY DETAILS

- THRUST BLOCKING
- UTILITY MAIN ENCASUREMENT
- WATER & SANITARY SEWER LINE CROSSING
- CONCENTRIC CAST-IN-PLACE SANITARY SEWER MANHOLE
- SANITARY SEWER CLEANOUT



Hight Jackson ASSOCIATES
5201 W Village Parkway, Suite 3001 Rogers, Arkansas 72768 | (479) 464-4965 | www.hjarch.com

AN ADDITION AND REMODEL FOR
Washington Co. Covid Mitigation
FAYETTEVILLE/AR

DRAWN BY:
JPB

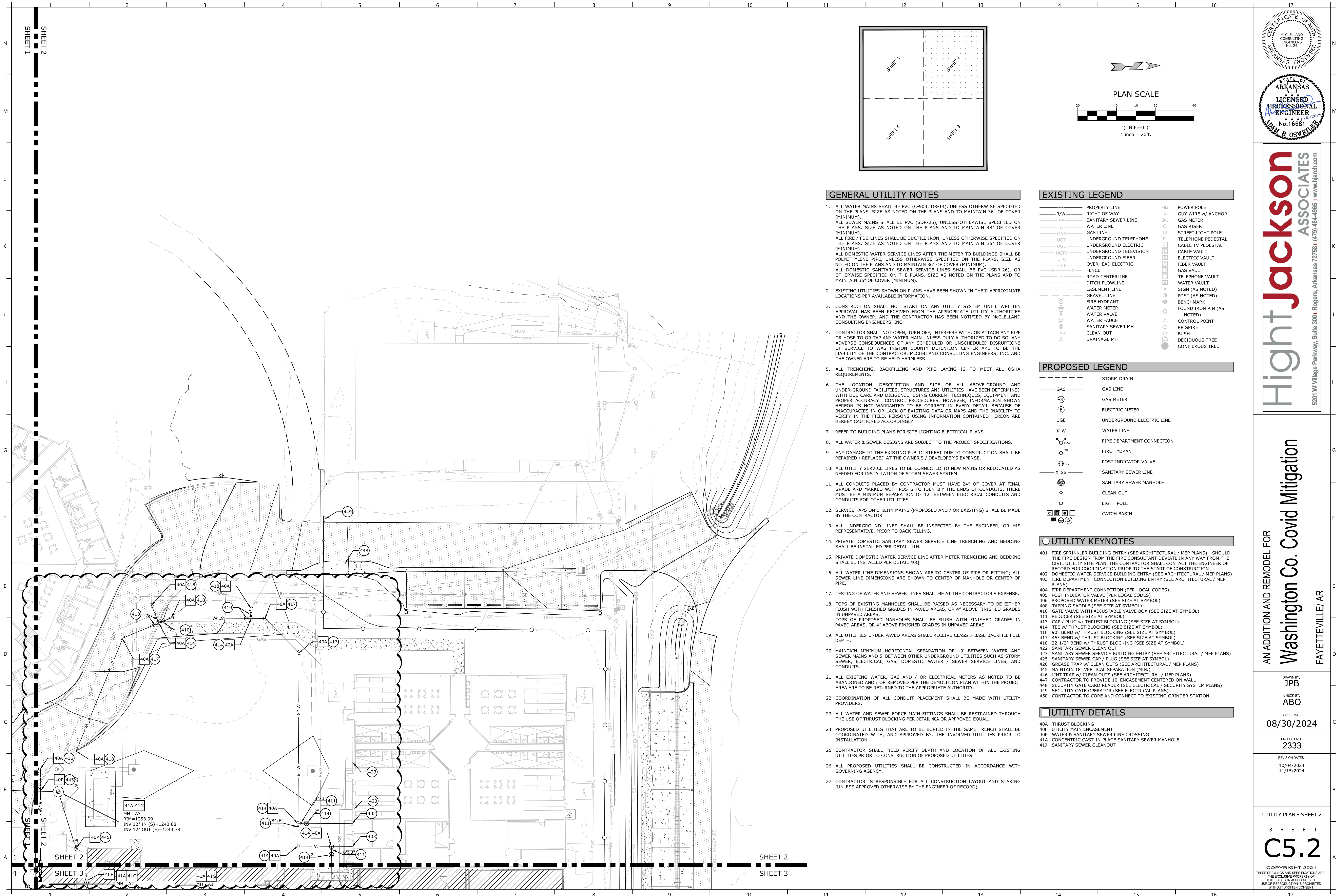
CHECK BY:
ABO

ISSUE DATE
08/30/2024

PROJECT NO.
2333

REVISION DATES
10/04/2024
11/15/2024

UTILITY PLAN - SHEET 1
S H E E T
C5.1
COPYRIGHT 2024
THESE DRAWINGS AND SPECIFICATIONS ARE THE EXCLUSIVE PROPERTY OF HIGHT JACKSON ASSOCIATES, P.A. USE OR REPRODUCTION IS PROHIBITED WITHOUT WRITTEN CONSENT



GENERAL UTILITY NOTES

- ALL WATER MAINS SHALL BE PVC (C-900; DR-14), UNLESS OTHERWISE SPECIFIED ON THE PLANS. SIZE AS NOTED ON THE PLANS AND TO MAINTAIN 36" OF COVER (MINIMUM).
ALL SEWER MAINS SHALL BE PVC (SDR-26), UNLESS OTHERWISE SPECIFIED ON THE PLANS. SIZE AS NOTED ON THE PLANS AND TO MAINTAIN 48" OF COVER (MINIMUM).
ALL FIRE / FDC LINES SHALL BE DUCTILE IRON, UNLESS OTHERWISE SPECIFIED ON THE PLANS. SIZE AS NOTED ON THE PLANS AND TO MAINTAIN 36" OF COVER (MINIMUM).
ALL DOMESTIC WATER SERVICE LINES AFTER THE METER TO BUILDINGS SHALL BE POLYETHYLENE PIPE, UNLESS OTHERWISE SPECIFIED ON THE PLANS. SIZE AS NOTED ON THE PLANS AND TO MAINTAIN 36" OF COVER (MINIMUM).
ALL DOMESTIC SANITARY SEWER SERVICE LINES SHALL BE PVC (SDR-26), OR OTHERWISE SPECIFIED ON THE PLANS. SIZE AS NOTED ON THE PLANS AND TO MAINTAIN 36" OF COVER (MINIMUM).
- EXISTING UTILITIES SHOWN ON PLANS HAVE BEEN SHOWN IN THEIR APPROXIMATE LOCATIONS PER AVAILABLE INFORMATION.
- CONSTRUCTION SHALL NOT START ON ANY UTILITY SYSTEM UNTIL WRITTEN APPROVAL HAS BEEN RECEIVED FROM THE APPROPRIATE UTILITY AUTHORITIES AND THE OWNER, AND THE CONTRACTOR HAS BEEN NOTIFIED BY MCLELLAND CONSULTING ENGINEERS, INC.
- CONTRACTOR SHALL NOT OPEN, TURN OFF, INTERFERE WITH, OR ATTACH ANY PIPE OR HOSE TO OR TAP ANY WATER MAIN UNLESS DULY AUTHORIZED TO DO SO. ANY ADVERSE CONSEQUENCES OF ANY SCHEDULED OR UNSCHEDULED DISRUPTIONS OF SERVICE TO WASHINGTON COUNTY DETENTION CENTER ARE TO BE THE LIABILITY OF THE CONTRACTOR. MCLELLAND CONSULTING ENGINEERS, INC. AND THE OWNER ARE TO BE HELD HARMLESS.
- ALL TRENCHING, BACKFILLING AND PIPE LAYING IS TO MEET ALL OSHA REQUIREMENTS.
- THE LOCATION, DESCRIPTION AND SIZE OF ALL ABOVE-GROUND AND UNDER-GROUND FACILITIES, STRUCTURES AND UTILITIES HAVE BEEN DETERMINED WITH DUE CARE AND DILIGENCE, USING CURRENT TECHNIQUES, EQUIPMENT AND PROPER ACCURACY CONTROL PROCEDURES. HOWEVER, INFORMATION SHOWN HEREON IS NOT WARRANTED TO BE CORRECT IN EVERY DETAIL BECAUSE OF INACCURACIES IN OR LACK OF EXISTING DATA OR MAPS AND THE INABILITY TO VERIFY IN THE FIELD. PERSONS USING INFORMATION CONTAINED HEREON ARE HEREBY CAUTIONED ACCORDINGLY.
- REFER TO BUILDING PLANS FOR SITE LIGHTING ELECTRICAL PLANS.
- ALL WATER & SEWER DESIGNS ARE SUBJECT TO THE PROJECT SPECIFICATIONS.
- ANY DAMAGE TO THE EXISTING PUBLIC STREET DUE TO CONSTRUCTION SHALL BE REPAIRED / REPLACED AT THE OWNER'S / DEVELOPER'S EXPENSE.
- ALL UTILITY SERVICE LINES TO BE CONNECTED TO NEW MAINS OR RELOCATED AS NEEDED FOR INSTALLATION OF STORM SEWER SYSTEM.
- ALL CONDUITS PLACED BY CONTRACTOR MUST HAVE 24" OF COVER AT FINAL GRADE AND MARKED WITH POSTS TO IDENTIFY THE ENDS OF CONDUITS. THERE MUST BE A MINIMUM SEPARATION OF 12" BETWEEN ELECTRICAL CONDUITS AND CONDUITS FOR OTHER UTILITIES.
- SERVICE TAPS ON UTILITY MAINS (PROPOSED AND / OR EXISTING) SHALL BE MADE BY THE CONTRACTOR.
- ALL UNDERGROUND LINES SHALL BE INSPECTED BY THE ENGINEER, OR HIS REPRESENTATIVE, PRIOR TO BACK FILLING.
- PRIVATE DOMESTIC SANITARY SEWER SERVICE LINE TRENCHING AND BEDDING SHALL BE INSTALLED PER DETAIL 410.
- PRIVATE DOMESTIC WATER SERVICE LINE AFTER METER TRENCHING AND BEDDING SHALL BE INSTALLED PER DETAIL 400.
- ALL WATER LINE DIMENSIONS SHOWN ARE TO CENTER OF PIPE OR FITTING; ALL SEWER LINE DIMENSIONS ARE SHOWN TO CENTER OF MANHOLE OR CENTER OF PIPE.
- TESTING OF WATER AND SEWER LINES SHALL BE AT THE CONTRACTOR'S EXPENSE.
- TOPS OF EXISTING MANHOLES SHALL BE RAISED AS NECESSARY TO BE EITHER FLUSH WITH FINISHED GRADES IN PAVED AREAS, OR 4" ABOVE FINISHED GRADES IN UNPAVED AREAS.
TOPS OF PROPOSED MANHOLES SHALL BE FLUSH WITH FINISHED GRADES IN PAVED AREAS, OR 4" ABOVE FINISHED GRADES IN UNPAVED AREAS.
- ALL UTILITIES UNDER PAVED AREAS SHALL RECEIVE CLASS 7 BASE BACKFILL FULL DEPTH.
- MAINTAIN MINIMUM HORIZONTAL SEPARATION OF 10' BETWEEN WATER AND SEWER MAINS AND 5' BETWEEN OTHER UNDERGROUND UTILITIES SUCH AS STORM SEWER, ELECTRICAL, GAS, DOMESTIC WATER / SEWER SERVICE LINES, AND CONDUITS.
- ALL EXISTING WATER, GAS AND / OR ELECTRICAL METERS AS NOTED TO BE ABANDONED AND / OR REMOVED PER THE DEMOLITION PLAN WITHIN THE PROJECT AREA ARE TO BE RETURNED TO THE APPROPRIATE AUTHORITY.
- COORDINATION OF ALL CONDUIT PLACEMENT SHALL BE MADE WITH UTILITY PROVIDERS.
- ALL WATER AND SEWER FORCE MAIN FITTINGS SHALL BE RESTRAINED THROUGH THE USE OF THRUST BLOCKING PER DETAIL 40A OR APPROVED EQUAL.
- PROPOSED UTILITIES THAT ARE TO BE BURIED IN THE SAME TRENCH SHALL BE COORDINATED WITH, AND APPROVED BY, THE INVOLVED UTILITIES PRIOR TO INSTALLATION.
- CONTRACTOR SHALL FIELD VERIFY DEPTH AND LOCATION OF ALL EXISTING UTILITIES PRIOR TO CONSTRUCTION OF PROPOSED UTILITIES.
- ALL PROPOSED UTILITIES SHALL BE CONSTRUCTED IN ACCORDANCE WITH GOVERNING AGENCY.
- CONTRACTOR IS RESPONSIBLE FOR ALL CONSTRUCTION LAYOUT AND STAKING (UNLESS APPROVED OTHERWISE BY THE ENGINEER OF RECORD).

EXISTING LEGEND

---	PROPERTY LINE	⊕	POWER POLE
R/W	RIGHT OF WAY	⊕	GUY WIRE w/ ANCHOR
SS	SANITARY SEWER LINE	⊕	GAS METER
W	WATER LINE	⊕	GAS RISER
GAS	GAS LINE	⊕	STREET LIGHT POLE
UGE	UNDERGROUND TELEPHONE	⊕	TELEPHONE PEDESTAL
UGT	UNDERGROUND ELECTRIC	⊕	CABLE TV PEDESTAL
UGTV	UNDERGROUND TELEVISION	⊕	CABLE VAULT
UFG	UNDERGROUND FIBER	⊕	ELECTRIC VAULT
OHE	OVERHEAD ELECTRIC	⊕	FIBER VAULT
X-X	FENCE	⊕	GAS VAULT
---	ROAD CENTERLINE	⊕	TELEPHONE VAULT
---	DITCH FLOWLINE	⊕	WATER VAULT
---	EASEMENT LINE	⊕	SIGN (AS NOTED)
---	GRAVEL LINE	⊕	POST (AS NOTED)
⊕	FIRE HYDRANT	⊕	BENCHMARK
⊕	WATER METER	⊕	FOUND IRON PIN (AS NOTED)
⊕	WATER VALVE	⊕	CONTROL POINT
⊕	WATER FAUCET	⊕	RR SPIKE
⊕	SANITARY SEWER MH	⊕	BUSH
⊕	CLEAN-OUT	⊕	DECIDUOUS TREE
⊕	DRAINAGE MH	⊕	CONIFEROUS TREE

PROPOSED LEGEND

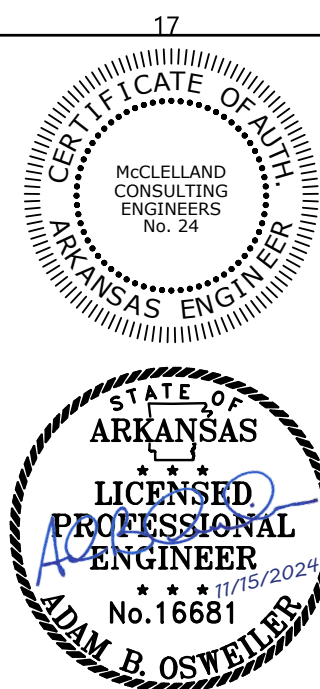
---	STORM DRAIN
---	GAS LINE
⊕	GAS METER
⊕	ELECTRIC METER
UGE	UNDERGROUND ELECTRIC LINE
X"W	WATER LINE
⊕	FIRE DEPARTMENT CONNECTION
⊕	FIRE HYDRANT
⊕	POST INDICATOR VALVE
X"SS	SANITARY SEWER LINE
⊕	SANITARY SEWER MANHOLE
⊕	CLEAN-OUT
⊕	LIGHT POLE
⊕	CATCH BASIN

UTILITY KEYNOTES

- FIRE SPRINKLER BUILDING ENTRY (SEE ARCHITECTURAL / MEP PLANS) - SHOULD THE FIRE DESIGN FROM THE FIRE CONSULTANT DEVIATE IN ANY WAY FROM THE CIVIL UTILITY SITE PLAN, THE CONTRACTOR SHALL CONTACT THE ENGINEER OF RECORD FOR COORDINATION PRIOR TO THE START OF CONSTRUCTION
- DOMESTIC WATER SERVICE BUILDING ENTRY (SEE ARCHITECTURAL / MEP PLANS)
- FIRE DEPARTMENT CONNECTION BUILDING ENTRY (SEE ARCHITECTURAL / MEP PLANS)
- FIRE DEPARTMENT CONNECTION (PER LOCAL CODES)
- POST INDICATOR VALVE (PER LOCAL CODES)
- PROPOSED WATER METER (SEE SIZE AT SYMBOL)
- TAPPING SADDLE (SEE SIZE AT SYMBOL)
- GATE VALVE WITH ADJUSTABLE VALVE BOX (SEE SIZE AT SYMBOL)
- REDUCER (SEE SIZE AT SYMBOL)
- CAP / PLUG w/ THRUST BLOCKING (SEE SIZE AT SYMBOL)
- TEE w/ THRUST BLOCKING (SEE SIZE AT SYMBOL)
- 90° BEND w/ THRUST BLOCKING (SEE SIZE AT SYMBOL)
- 45° BEND w/ THRUST BLOCKING (SEE SIZE AT SYMBOL)
- 22-1/2° BEND w/ THRUST BLOCKING (SEE SIZE AT SYMBOL)
- SANITARY SEWER CLEAN OUT
- SANITARY SEWER SERVICE BUILDING ENTRY (SEE ARCHITECTURAL / MEP PLANS)
- SANITARY SEWER CAP / PLUG (SEE SIZE AT SYMBOL)
- GREASE TRAP w/ CLEAN OUTS (SEE ARCHITECTURAL / MEP PLANS)
- MAINTAIN 18" VERTICAL SEPARATION (MIN.)
- LINT TRAP w/ CLEAN OUTS (SEE ARCHITECTURAL / MEP PLANS)
- CONTRACTOR TO PROVIDE 10' ENCASMENT CENTERED ON WALL
- SECURITY GATE CARD READER (SEE ELECTRICAL / SECURITY SYSTEM PLANS)
- SECURITY GATE OPERATOR (SEE ELECTRICAL PLANS)
- CONTRACTOR TO CORE AND CONNECT TO EXISTING GRINDER STATION

UTILITY DETAILS

- THRUST BLOCKING
- UTILITY MAIN ENCASMENT
- WATER & SANITARY SEWER LINE CROSSING
- CONCENTRIC CAST-IN-PLACE SANITARY SEWER MANHOLE
- SANITARY SEWER CLEANOUT



Hight Jackson ASSOCIATES
5201 W Village Parkway, Suite 3001 Rogers, Arkansas 72768 | (479) 464-4965 | www.hjarch.com

AN ADDITION AND REMODEL FOR
Washington Co. Covid Mitigation
FAYETTEVILLE/AR

DRAWN BY:
JPB

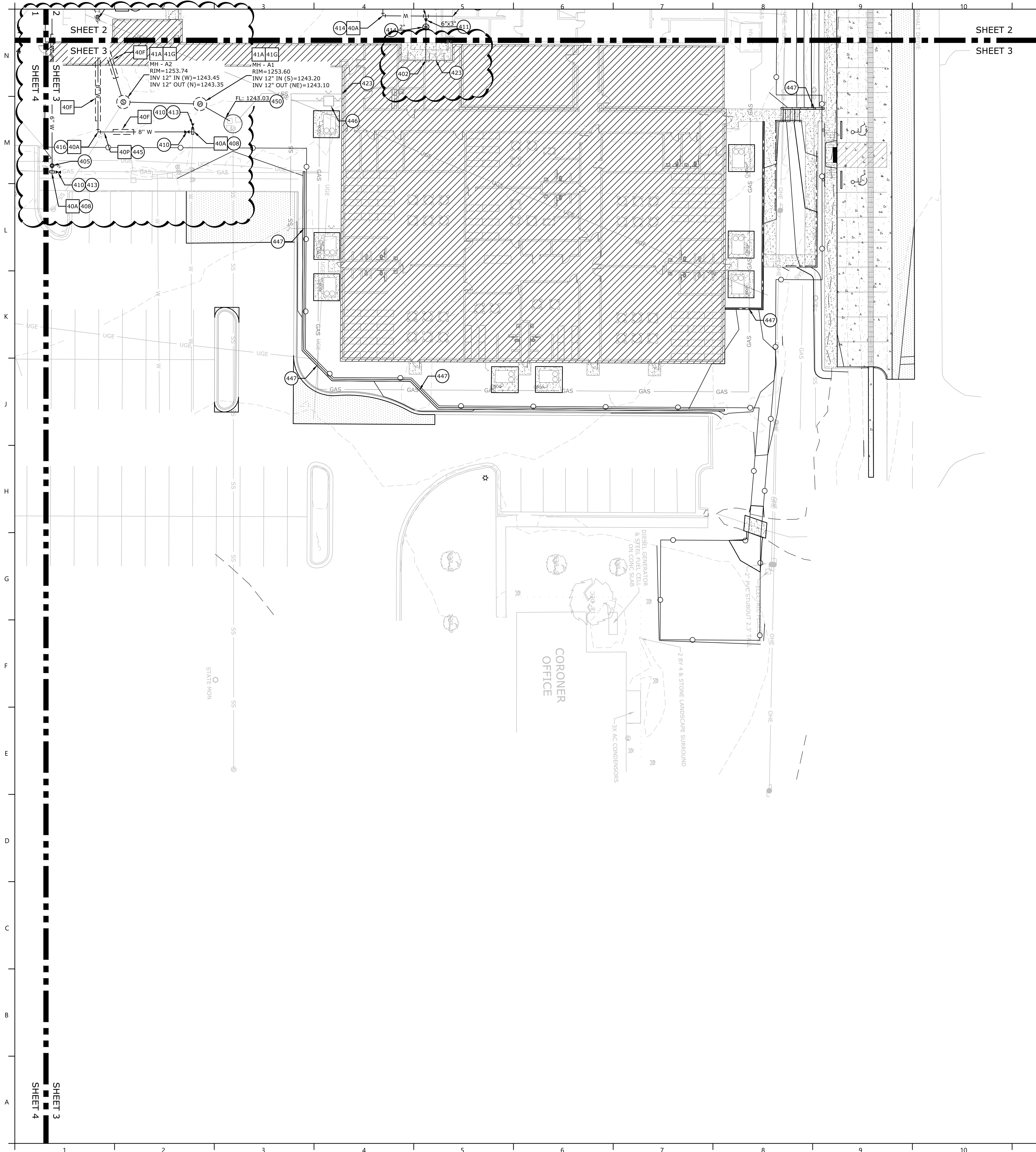
CHECK BY:
ABO

ISSUE DATE
08/30/2024

PROJECT NO.
2333

REVISION DATES
10/04/2024
11/15/2024

UTILITY PLAN - SHEET 2
SHEET
C5.2
COPYRIGHT 2024
THESE DRAWINGS AND SPECIFICATIONS ARE THE EXCLUSIVE PROPERTY OF HIGHT JACKSON ASSOCIATES, P.A. USE OR REPRODUCTION IS PROHIBITED WITHOUT WRITTEN CONSENT



GENERAL UTILITY NOTES

- ALL WATER MAINS SHALL BE PVC (C-900; DR-14), UNLESS OTHERWISE SPECIFIED ON THE PLANS. SIZE AS NOTED ON THE PLANS AND TO MAINTAIN 36" OF COVER (MINIMUM). ALL SEWER MAINS SHALL BE PVC (SDR-26), UNLESS OTHERWISE SPECIFIED ON THE PLANS. SIZE AS NOTED ON THE PLANS AND TO MAINTAIN 48" OF COVER (MINIMUM). ALL FIRE / FDC LINES SHALL BE DUCTILE IRON, UNLESS OTHERWISE SPECIFIED ON THE PLANS. SIZE AS NOTED ON THE PLANS AND TO MAINTAIN 36" OF COVER (MINIMUM). ALL DOMESTIC WATER SERVICE LINES AFTER THE METER TO BUILDINGS SHALL BE POLYETHYLENE PIPE, UNLESS OTHERWISE SPECIFIED ON THE PLANS. SIZE AS NOTED ON THE PLANS AND TO MAINTAIN 36" OF COVER (MINIMUM). ALL DOMESTIC SANITARY SEWER SERVICE LINES SHALL BE PVC (SDR-26), OR OTHERWISE SPECIFIED ON THE PLANS. SIZE AS NOTED ON THE PLANS AND TO MAINTAIN 36" OF COVER (MINIMUM).
- EXISTING UTILITIES SHOWN ON PLANS HAVE BEEN SHOWN IN THEIR APPROXIMATE LOCATIONS PER AVAILABLE INFORMATION.
- CONSTRUCTION SHALL NOT START ON ANY UTILITY SYSTEM UNTIL WRITTEN APPROVAL HAS BEEN RECEIVED FROM THE APPROPRIATE UTILITY AUTHORITIES AND THE OWNER, AND THE CONTRACTOR HAS BEEN NOTIFIED BY MCLELLAND CONSULTING ENGINEERS, INC.
- CONTRACTOR SHALL NOT OPEN, TURN OFF, INTERFERE WITH, OR ATTACH ANY PIPE OR HOSE TO OR TAP ANY WATER MAIN UNLESS DULY AUTHORIZED TO DO SO. ANY ADVERSE CONSEQUENCES OF ANY SCHEDULED OR UNSCHEDULED DISRUPTIONS OF SERVICE TO WASHINGTON COUNTY DETENTION CENTER ARE TO BE THE LIABILITY OF THE CONTRACTOR. MCLELLAND CONSULTING ENGINEERS, INC. AND THE OWNER ARE TO BE HELD HARMLESS.
- ALL TRENCHING, BACKFILLING AND PIPE LAYING IS TO MEET ALL OSHA REQUIREMENTS.
- THE LOCATION, DESCRIPTION AND SIZE OF ALL ABOVE-GROUND AND UNDER-GROUND FACILITIES, STRUCTURES AND UTILITIES HAVE BEEN DETERMINED WITH DUE CARE AND DILIGENCE, USING CURRENT TECHNIQUES, EQUIPMENT AND PROPER ACCURACY CONTROL PROCEDURES. HOWEVER, INFORMATION SHOWN HEREON IS NOT WARRANTED TO BE CORRECT IN EVERY DETAIL BECAUSE OF INACCURACIES IN OR LACK OF EXISTING DATA OR MAPS AND THE INABILITY TO VERIFY IN THE FIELD. PERSONS USING INFORMATION CONTAINED HEREON ARE HEREBY CAUTIONED ACCORDINGLY.
- REFER TO BUILDING PLANS FOR SITE LIGHTING ELECTRICAL PLANS.
- ALL WATER & SEWER DESIGNS ARE SUBJECT TO THE PROJECT SPECIFICATIONS.
- ANY DAMAGE TO THE EXISTING PUBLIC STREET DUE TO CONSTRUCTION SHALL BE REPAIRED / REPLACED AT THE OWNER'S / DEVELOPER'S EXPENSE.
- ALL UTILITY SERVICE LINES TO BE CONNECTED TO NEW MAINS OR RELOCATED AS NEEDED FOR INSTALLATION OF STORM SEWER SYSTEM.
- ALL CONDUITS PLACED BY CONTRACTOR MUST HAVE 24" OF COVER AT FINAL GRADE AND MARKED WITH POSTS TO IDENTIFY THE ENDS OF CONDUITS. THERE MUST BE A MINIMUM SEPARATION OF 12" BETWEEN ELECTRICAL CONDUITS AND CONDUITS FOR OTHER UTILITIES.
- SERVICE TAPS ON UTILITY MAINS (PROPOSED AND / OR EXISTING) SHALL BE MADE BY THE CONTRACTOR.
- ALL UNDERGROUND LINES SHALL BE INSPECTED BY THE ENGINEER, OR HIS REPRESENTATIVE, PRIOR TO BACK FILLING.
- PRIVATE DOMESTIC SANITARY SEWER SERVICE LINE TRENCHING AND BEDDING SHALL BE INSTALLED PER DETAIL 41N.
- PRIVATE DOMESTIC WATER SERVICE LINE AFTER METER TRENCHING AND BEDDING SHALL BE INSTALLED PER DETAIL 40Q.
- ALL WATER LINE DIMENSIONS SHOWN ARE TO CENTER OF PIPE OR FITTING; ALL SEWER LINE DIMENSIONS ARE SHOWN TO CENTER OF MANHOLE OR CENTER OF PIPE.
- TESTING OF WATER AND SEWER LINES SHALL BE AT THE CONTRACTOR'S EXPENSE.
- TOPS OF EXISTING MANHOLES SHALL BE RAISED AS NECESSARY TO BE EITHER FLUSH WITH FINISHED GRADES IN PAVED AREAS, OR 4" ABOVE FINISHED GRADES IN UNPAVED AREAS. TOPS OF PROPOSED MANHOLES SHALL BE FLUSH WITH FINISHED GRADES IN PAVED AREAS, OR 4" ABOVE FINISHED GRADES IN UNPAVED AREAS.
- ALL UTILITIES UNDER PAVED AREAS SHALL RECEIVE CLASS 7 BASE BACKFILL FULL DEPTH.
- MAINTAIN MINIMUM HORIZONTAL SEPARATION OF 10' BETWEEN WATER AND SEWER MAINS AND 5' BETWEEN OTHER UNDERGROUND UTILITIES SUCH AS STORM SEWER, ELECTRICAL, GAS, DOMESTIC WATER / SEWER SERVICE LINES, AND CONDUITS.
- ALL EXISTING WATER, GAS AND / OR ELECTRICAL METERS AS NOTED TO BE ABANDONED AND / OR REMOVED PER THE DEMOLITION PLAN WITHIN THE PROJECT AREA ARE TO BE RETURNED TO THE APPROPRIATE AUTHORITY.
- COORDINATION OF ALL CONDUIT PLACEMENT SHALL BE MADE WITH UTILITY PROVIDERS.
- ALL WATER AND SEWER FORCE MAIN FITTINGS SHALL BE RESTRAINED THROUGH THE USE OF THRUST BLOCKING PER DETAIL 40A OR APPROVED EQUAL.
- PROPOSED UTILITIES THAT ARE TO BE BURIED IN THE SAME TRENCH SHALL BE COORDINATED WITH, AND APPROVED BY, THE INVOLVED UTILITIES PRIOR TO INSTALLATION.
- CONTRACTOR SHALL FIELD VERIFY DEPTH AND LOCATION OF ALL EXISTING UTILITIES PRIOR TO CONSTRUCTION OF PROPOSED UTILITIES.
- ALL PROPOSED UTILITIES SHALL BE CONSTRUCTED IN ACCORDANCE WITH GOVERNING AGENCY.
- CONTRACTOR IS RESPONSIBLE FOR ALL CONSTRUCTION LAYOUT AND STAKING (UNLESS APPROVED OTHERWISE BY THE ENGINEER OF RECORD).

EXISTING LEGEND

---	PROPERTY LINE	⬮	POWER POLE
---	RIGHT OF WAY	⬮	GUY WIRE w/ ANCHOR
SS	SANITARY SEWER LINE	⬮	GAS METER
W	WATER LINE	⬮	GAS RISER
GAS	GAS LINE	⬮	STREET LIGHT POLE
UGT	UNDERGROUND TELEPHONE	⬮	TELEPHONE PEDESTAL
UG	UNDERGROUND ELECTRIC	⬮	CABLE TV PEDESTAL
UGTV	UNDERGROUND TELEVISION	⬮	CABLE VAULT
OHE	OVERHEAD ELECTRIC	⬮	ELECTRIC VAULT
X-X	FENCE	⬮	FIBER VAULT
---	ROAD CENTERLINE	⬮	GAS VAULT
---	DITCH FLOWLINE	⬮	TELEPHONE VAULT
---	EASEMENT LINE	⬮	WATER VAULT
---	GRAVEL LINE	⬮	SIGN (AS NOTED)
---	FIRE HYDRANT	⬮	POST (AS NOTED)
---	WATER METER	⬮	BENCHMARK
---	WATER VALVE	⬮	FOUND IRON PIN (AS NOTED)
---	WATER FAUCET	⬮	CONTROL POINT
---	SANITARY SEWER MH	⬮	RR SPIKE
---	CLEAN-OUT	⬮	BUSH
---	DRAINAGE MH	⬮	DECIDUOUS TREE
		⬮	CONIFEROUS TREE

PROPOSED LEGEND

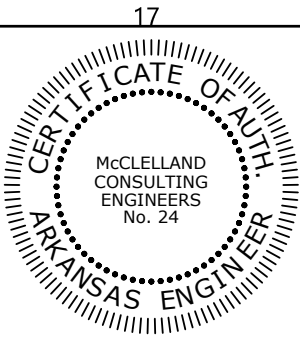
---	STORM DRAIN
---	GAS LINE
---	GAS METER
---	ELECTRIC METER
---	UNDERGROUND ELECTRIC LINE
---	WATER LINE
---	FIRE DEPARTMENT CONNECTION
---	FIRE HYDRANT
---	POST INDICATOR VALVE
---	SANITARY SEWER LINE
---	SANITARY SEWER MANHOLE
---	CLEAN-OUT
---	LIGHT POLE
---	CATCH BASIN

UTILITY KEYNOTES

- FIRE SPRINKLER BUILDING ENTRY (SEE ARCHITECTURAL / MEP PLANS) - SHOULD THE FIRE DESIGN FROM THE FIRE CONSULTANT DEVIATE IN ANY WAY FROM THE CIVIL UTILITY SITE PLAN, THE CONTRACTOR SHALL CONTACT THE ENGINEER OF RECORD FOR COORDINATION PRIOR TO THE START OF CONSTRUCTION
- DOMESTIC WATER SERVICE BUILDING ENTRY (SEE ARCHITECTURAL / MEP PLANS)
- FIRE DEPARTMENT CONNECTION BUILDING ENTRY (SEE ARCHITECTURAL / MEP PLANS)
- FIRE DEPARTMENT CONNECTION (PER LOCAL CODES)
- POST INDICATOR VALVE (PER LOCAL CODES)
- PROPOSED WATER METER (SEE SIZE AT SYMBOL)
- TAPPING SADDLE (SEE SIZE AT SYMBOL)
- GATE VALVE WITH ADJUSTABLE VALVE BOX (SEE SIZE AT SYMBOL)
- REDUCER (SEE SIZE AT SYMBOL)
- CAP / PLUG w/ THRUST BLOCKING (SEE SIZE AT SYMBOL)
- TEE w/ THRUST BLOCKING (SEE SIZE AT SYMBOL)
- 90° BEND w/ THRUST BLOCKING (SEE SIZE AT SYMBOL)
- 45° BEND w/ THRUST BLOCKING (SEE SIZE AT SYMBOL)
- 22-1/2° BEND w/ THRUST BLOCKING (SEE SIZE AT SYMBOL)
- SANITARY SEWER CLEAN OUT
- SANITARY SEWER SERVICE BUILDING ENTRY (SEE ARCHITECTURAL / MEP PLANS)
- SANITARY SEWER CAP / PLUG (SEE SIZE AT SYMBOL)
- GREASE TRAP w/ CLEAN OUTS (SEE ARCHITECTURAL / MEP PLANS)
- MAINTAIN 18" VERTICAL SEPARATION (MIN.)
- LINT TRAP w/ CLEAN OUTS (SEE ARCHITECTURAL / MEP PLANS)
- CONTRACTOR TO PROVIDE 10' ENCASMENT CENTERED ON WALL
- SECURITY GATE CARD READER (SEE ELECTRICAL / SECURITY SYSTEM PLANS)
- SECURITY GATE OPERATOR (SEE ELECTRICAL PLANS)
- CONTRACTOR TO CORE AND CONNECT TO EXISTING GRINDER STATION

UTILITY DETAILS

- THRUST BLOCKING
- UTILITY MAIN ENCASMENT
- WATER & SANITARY SEWER LINE CROSSING
- CENTRIC CAST-IN-PLACE SANITARY SEWER MANHOLE
- SANITARY SEWER CLEANOUT

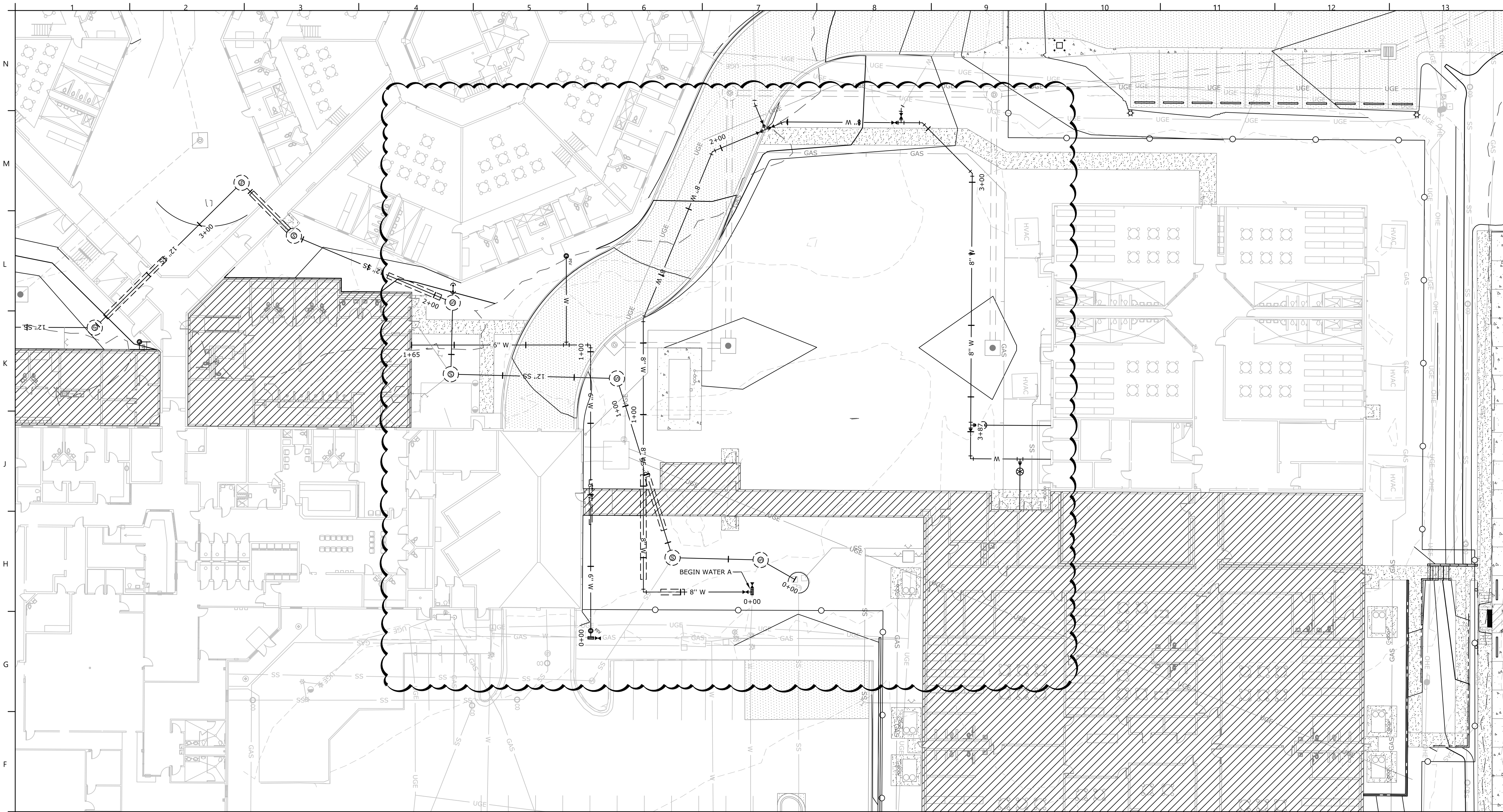


Hight Jackson ASSOCIATES
5201 W Village Parkway, Suite 300 | Rogers, Arkansas 72768 | (479) 464-4965 | www.hjarch.com

AN ADDITION AND REMODEL FOR
Washington Co. Covid Mitigation
FAYETTEVILLE/AR

DRAWN BY:
JPB
CHECK BY:
ABO
ISSUE DATE
08/30/2024
PROJECT NO.
2333
REVISION DATES
10/04/2024
11/15/2024

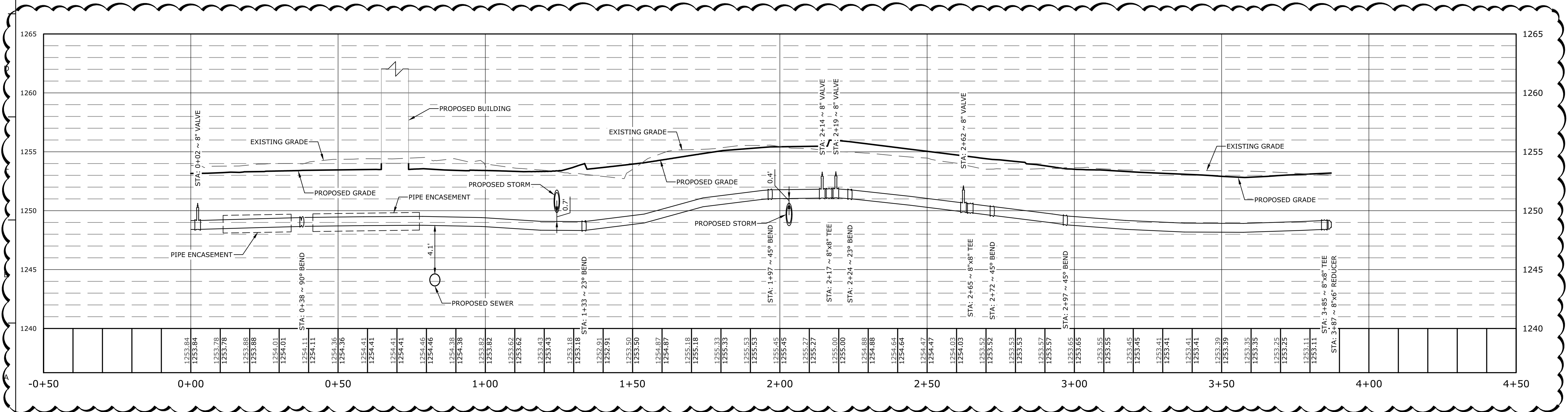
UTILITY PLAN - SHEET 3
SHEET
C5.3
COPYRIGHT 2024
THESE DRAWINGS AND SPECIFICATIONS ARE THE EXCLUSIVE PROPERTY OF HIGHT JACKSON ASSOCIATES, P.A. USE OR REPRODUCTION IS PROHIBITED WITHOUT WRITTEN CONSENT.



- EXISTING LEGEND**
- PROPERTY LINE
 - R/W RIGHT OF WAY
 - SS SANITARY SEWER LINE
 - W WATER LINE
 - GAS GAS LINE
 - UGT UNDERGROUND TELEPHONE
 - UGE UNDERGROUND ELECTRIC
 - UGTV UNDERGROUND TELEVISION
 - UFD UNDERGROUND FIBER
 - OHE OVERHEAD ELECTRIC
 - FENCE
 - ROAD CENTERLINE
 - DITCH FLOWLINE
 - EASEMENT LINE
 - GRAVEL LINE
 - FIRE HYDRANT
 - WATER METER
 - WATER VALVE
 - SANITARY SEWER MH
 - CLEAN-OUT
 - DRAINAGE MH
 - POWER POLE
 - GUY WIRE w/ ANCHOR
 - GAS METER
 - GAS RISER
 - STREET LIGHT POLE
 - TELEPHONE PEDESTAL
 - CABLE TV PEDESTAL
 - CABLE VAULT
 - ELECTRIC VAULT
 - FIBER VAULT
 - GAS VAULT
 - TELEPHONE VAULT
 - WATER VAULT
 - SIGN (AS NOTED)
 - POST (AS NOTED)
 - BENCHMARK
 - FOUND IRON PIN (AS NOTED)
 - CONTROL POINT
 - RR SPIKE
 - BUSH
 - DECIDUOUS TREE
 - CONIFEROUS TREE

- PROPOSED LEGEND**
- STORM DRAIN
 - GAS LINE
 - GAS METER
 - ELECTRIC METER
 - UNDERGROUND ELECTRIC LINE
 - WATER LINE
 - FIRE DEPARTMENT CONNECTION
 - FIRE HYDRANT
 - POST INDICATOR VALVE
 - SANITARY SEWER LINE
 - SANITARY SEWER MANHOLE
 - CLEAN-OUT
 - LIGHT POLE
 - CATCH BASIN

WATER A PROFILE
HORIZONTAL SCALE: 1"=20'
VERTICAL SCALE: 1"=5'



REGISTERED PROFESSIONAL ENGINEER
No. 24
ARKANSAS ENGINEER

STATE OF ARKANSAS
REGISTERED PROFESSIONAL ENGINEER
No. 16681
10/15/2024
DAN B. OSWELL

Hight Jackson ASSOCIATES

5201 W Village Parkway, Suite 300 | Rogers, Arkansas 72768 | (479) 464-4965 | www.hjarch.com

AN ADDITION AND REMODEL FOR
Washington Co. Covid Mitigation
FAYETTEVILLE/AR

DRAWN BY:
JPB

CHECK BY:
ABO

ISSUE DATE
08/30/2024

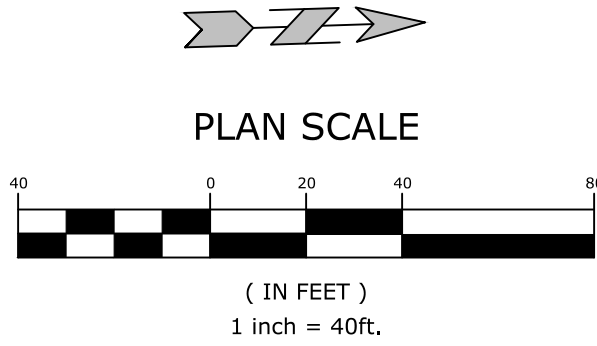
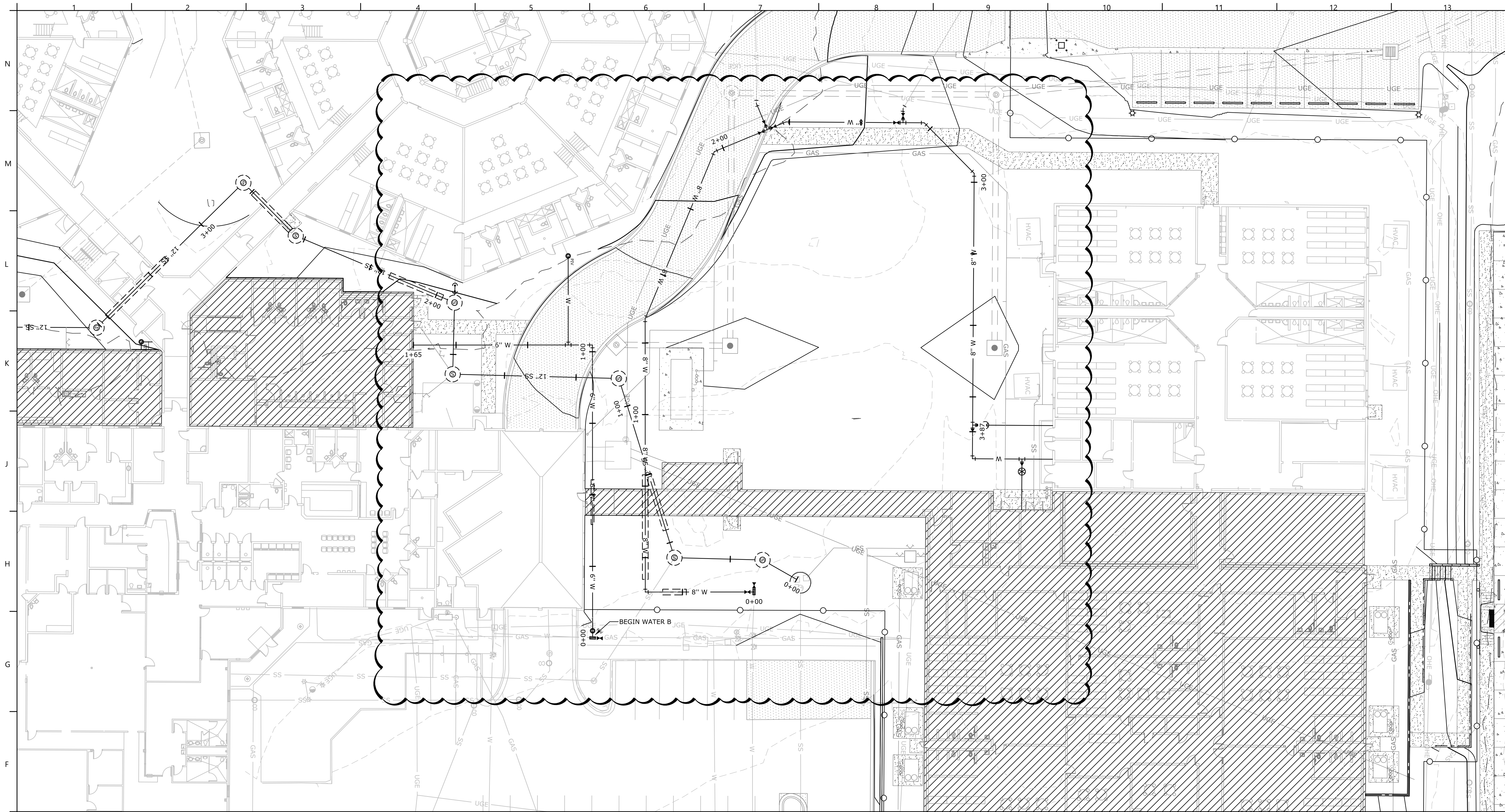
PROJECT NO.
2333

REVISION DATES
10/04/2024
11/15/2024

WATER PLAN AND PROFILE A

SHEET
C5.6

COPYRIGHT 2024
THESE DRAWINGS AND SPECIFICATIONS ARE
THE EXCLUSIVE PROPERTY OF
HIGHT JACKSON ASSOCIATES, P.A.
USE OR REPRODUCTION IS PROHIBITED
WITHOUT WRITTEN CONSENT



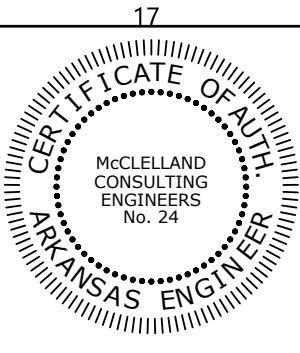
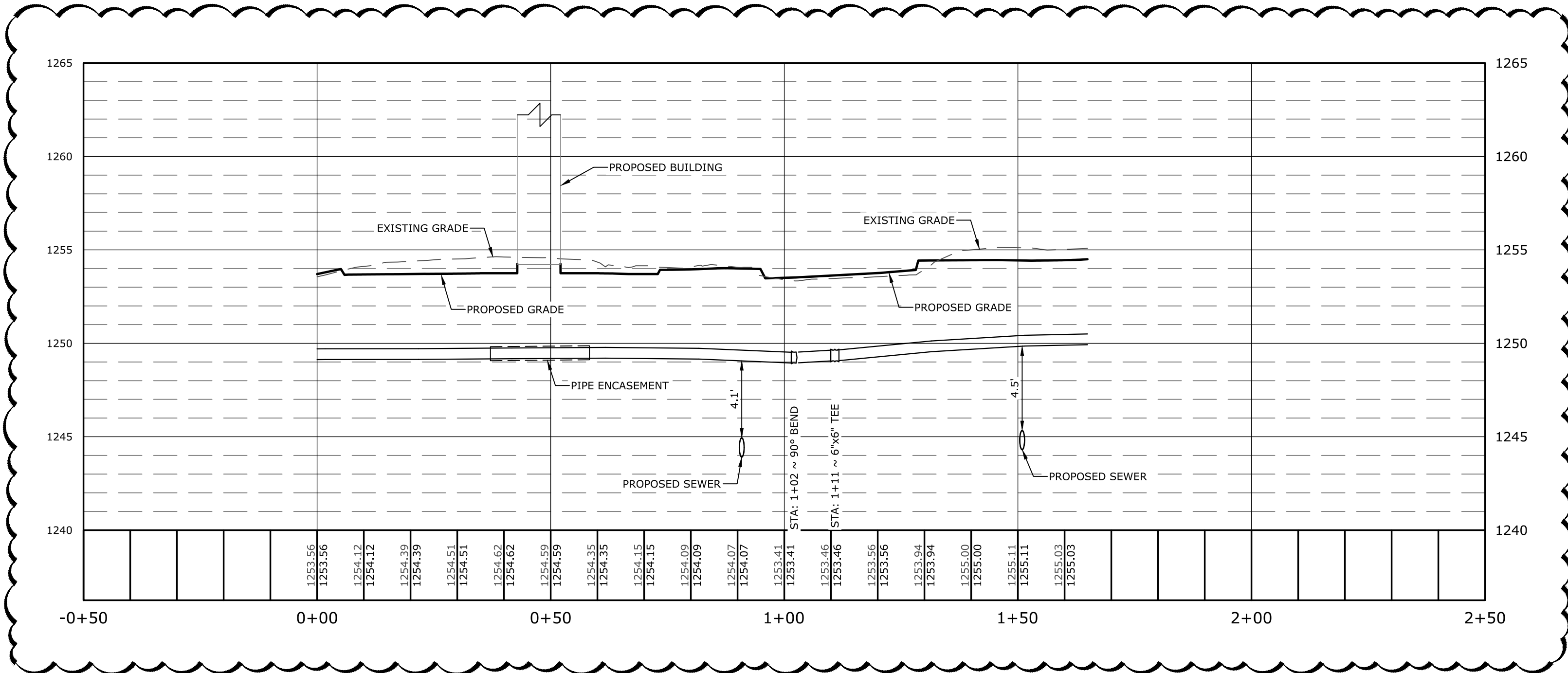
EXISTING LEGEND

- | | | | |
|------|------------------------|---|---------------------------|
| --- | PROPERTY LINE | — | POWER POLE |
| — | R/W | — | GUY WIRE w/ ANCHOR |
| SS | SANITARY SEWER LINE | — | GAS METER |
| W | WATER LINE | — | GAS RISER |
| GAS | GAS LINE | — | STREET LIGHT POLE |
| UGT | UNDERGROUND TELEPHONE | — | TELEPHONE PEDESTAL |
| UGE | UNDERGROUND ELECTRIC | — | CABLE TV PEDESTAL |
| UGTV | UNDERGROUND TELEVISION | — | CABLE VAULT |
| UFD | UNDERGROUND FIBER | — | ELECTRIC VAULT |
| OHE | OVERHEAD ELECTRIC | — | FIBER VAULT |
| X | FENCE | — | GAS VAULT |
| — | ROAD CENTERLINE | — | TELEPHONE VAULT |
| — | DITCH FLOWLINE | — | WATER VAULT |
| — | EASEMENT LINE | — | SIGN (AS NOTED) |
| — | GRAVEL LINE | — | POST (AS NOTED) |
| — | FIRE HYDRANT | — | BENCHMARK |
| — | WATER METER | — | FOUND IRON PIN (AS NOTED) |
| — | WATER VALVE | — | CONTROL POINT |
| — | WATER FAUCET | — | RR SPIKE |
| — | SANITARY SEWER MH | — | BUSH |
| — | CLEAN-OUT | — | DECIDUOUS TREE |
| — | DRAINAGE MH | — | CONIFEROUS TREE |

PROPOSED LEGEND

- | | |
|-----|----------------------------|
| --- | STORM DRAIN |
| — | GAS LINE |
| — | GAS METER |
| — | ELECTRIC METER |
| — | UNDERGROUND ELECTRIC LINE |
| — | WATER LINE |
| — | FIRE DEPARTMENT CONNECTION |
| — | FIRE HYDRANT |
| — | POST INDICATOR VALVE |
| — | SANITARY SEWER LINE |
| — | SANITARY SEWER MANHOLE |
| — | CLEAN-OUT |
| — | LIGHT POLE |
| — | CATCH BASIN |

WATER B PROFILE
HORIZONTAL SCALE: 1"=20'
VERTICAL SCALE: 1"=5'



Hight Jackson
ASSOCIATES
5201 W Village Parkway, Suite 300 | Rogers, Arkansas 72768 | (479) 464-4965 | www.hjarch.com

AN ADDITION AND REMODEL FOR
Washington Co. Covid Mitigation
FAYETTEVILLE/AR

DRAWN BY:
JPB
CHECK BY:
ABO
ISSUE DATE
08/30/2024

PROJECT NO:
2333
REVISION DATES
10/04/2024
11/15/2024

WATER PLAN AND PROFILE B
SHEET
C5.7
COPYRIGHT 2024
THESE DRAWINGS AND SPECIFICATIONS ARE
THE EXCLUSIVE PROPERTY OF
HIGHT JACKSON ASSOCIATES, P.A.
USE OR REPRODUCTION IS PROHIBITED
WITHOUT WRITTEN CONSENT

NOTE:
FIRE SPRINKLE CONTRACTOR TO SUPPLY TAMPER-PROOF
SPRINKLER HEADS IN ALL DETENTION LOCATION.

SEISMIC DESIGN INFORMATION

ALL FIRE PROTECTION SYSTEMS SHALL HAVE A COMPONENT
IMPORTANCE FACTOR OF 1.5. VIBRATION ISOLATION OF FIRE
PROTECTION EQUIPMENT AND PIPING IS NOT REQUIRED UNLESS
INDICATED SPECIFICALLY ON DRAWINGS OR SCHEDULES. REFER TO
SPECIFICATIONS FOR MORE INFORMATION. REFER TO STRUCTURAL
DRAWINGS FOR BUILDING SEISMIC DESIGN INFORMATION.



Hight Jackson
ASSOCIATES
5201 W Village Parkway, Suite 300 | Rogers, Arkansas 72768 | (479) 464-4965 | www.hjarch.com

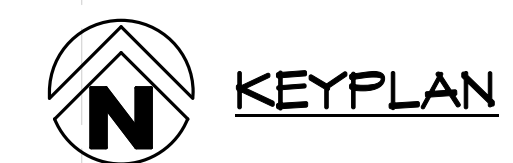
AN ADDITION AND REMODEL FOR
Washington Co. Covid Mitigation
FAYETTEVILLE, AR

DRAWN BY:
KPH
CHECK BY:
NEW
ISSUE DATE:
08/30/2024

PROJECT NO:
2333

REVISION DATES
10/04/2024
11/15/2024

FIRE PROTECTION PLAN
SHEET
FP2.2
COPYRIGHT 2024
THESE DRAWINGS AND SPECIFICATIONS ARE
THE EXCLUSIVE PROPERTY OF
HIGHT JACKSON ASSOCIATES P.A.
USE OR REPRODUCTION IS PROHIBITED
WITHOUT WRITTEN CONSENT

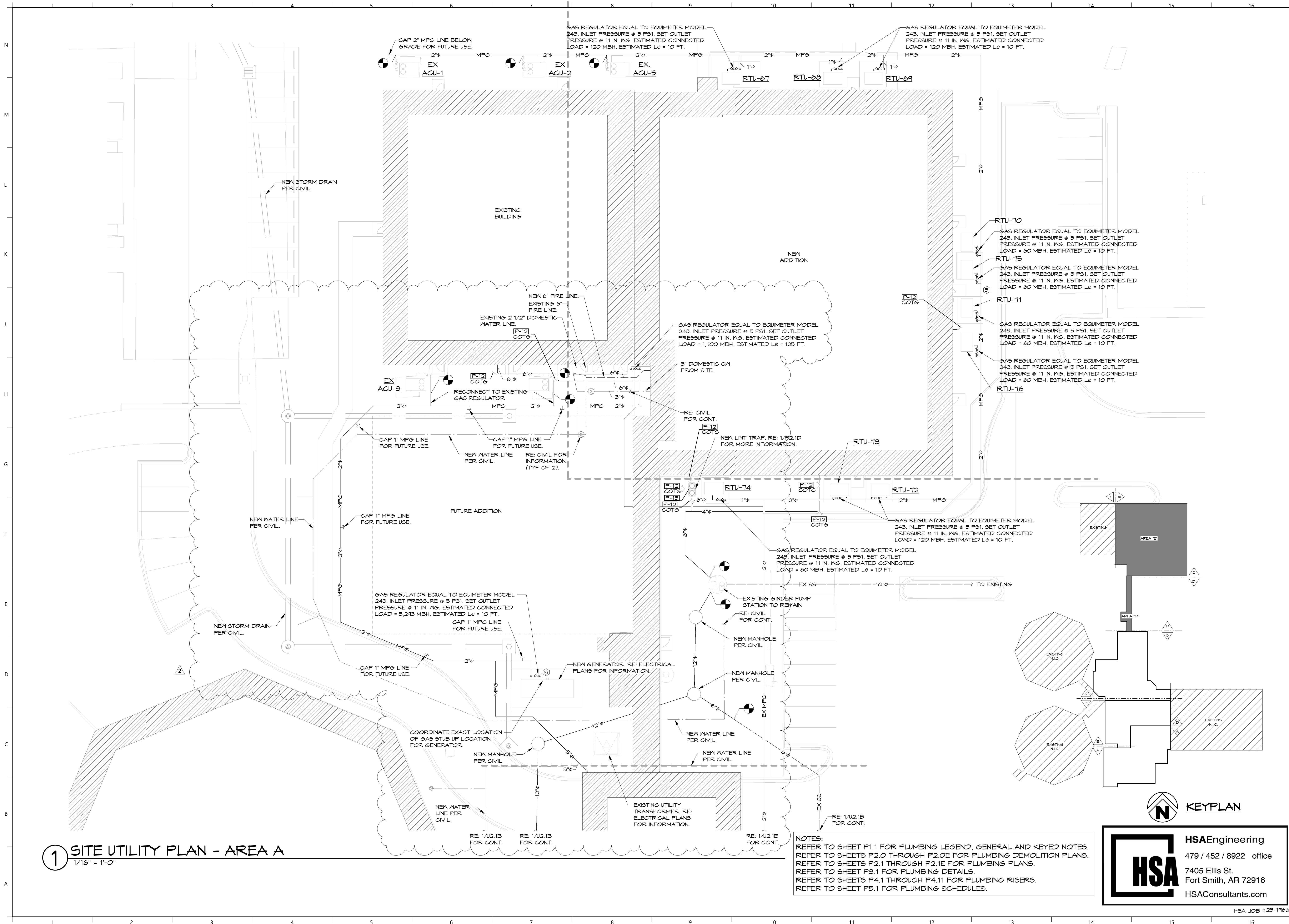


HSA
HSAEngineering
479 / 452 / 8922 office
7405 Ellis St.
Fort Smith, AR 72916
HSAConsultants.com

HSA JOB # 23-196a

① AREA D FIRE PROTECTION PLAN
1/8" = 1'-0"

② AREA E FIRE PROTECTION PLAN
1/8" = 1'-0"



1 SITE UTILITY PLAN - AREA A
1/16" = 1'-0"

NOTES:
REFER TO SHEET P1.1 FOR PLUMBING LEGEND, GENERAL AND KEYED NOTES.
REFER TO SHEETS P2.0 THROUGH P2.0E FOR PLUMBING DEMOLITION PLANS.
REFER TO SHEETS P2.1 THROUGH P2.1E FOR PLUMBING PLANS.
REFER TO SHEET P3.1 FOR PLUMBING DETAILS.
REFER TO SHEETS P4.1 THROUGH P4.11 FOR PLUMBING RISERS.
REFER TO SHEET P5.1 FOR PLUMBING SCHEDULES.



HSAEngineering
479 / 452 / 8922 office
7405 Ellis St.
Fort Smith, AR 72916
HSAConsultants.com



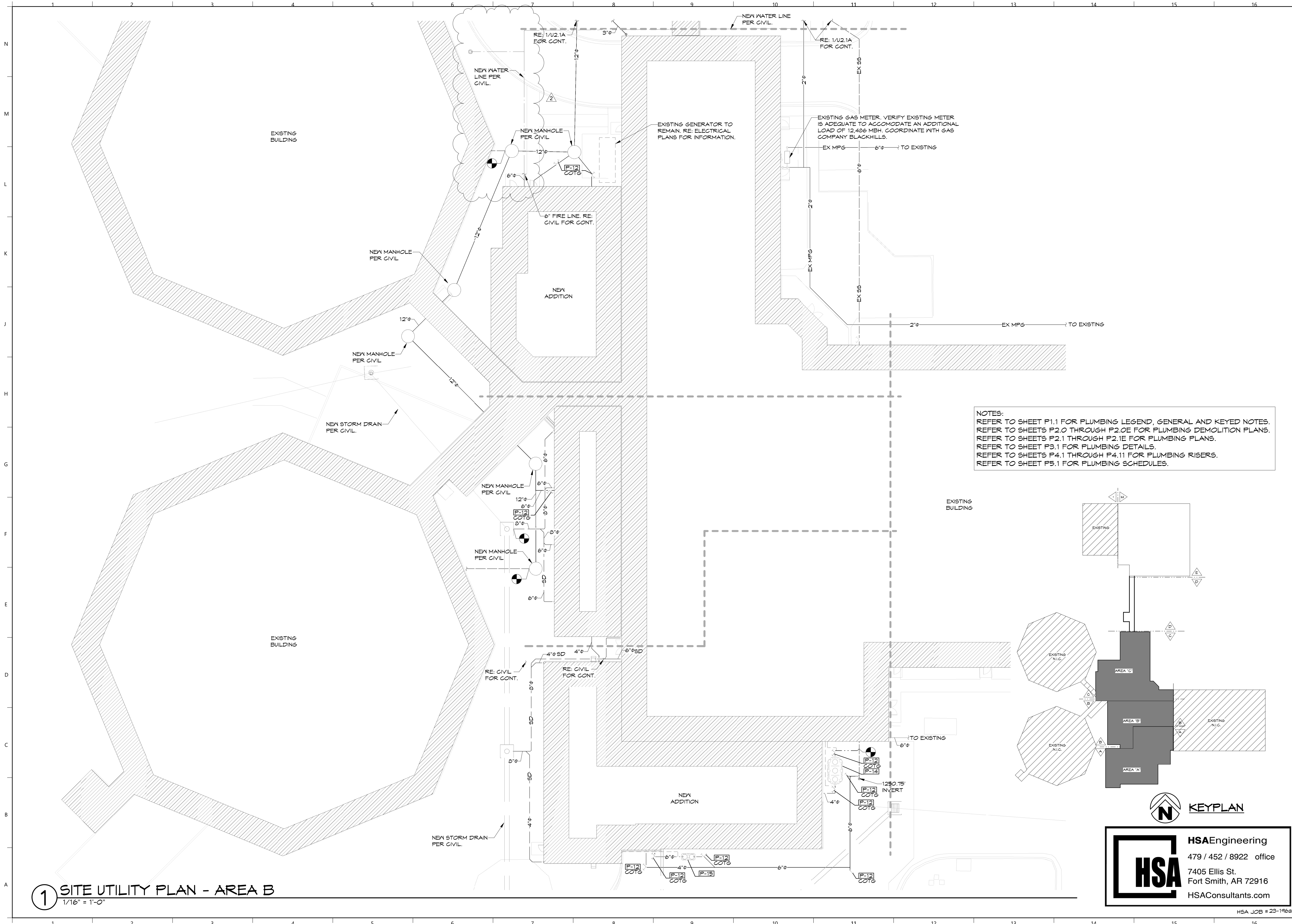
Hight Jackson
ASSOCIATES
5201 W Village Parkway, Suite 3001 Rogers, Arkansas 72781 (479) 464-4965 | www.hjarch.com

AN ADDITION AND REMODEL FOR
Washington Co. Covid Mitigation
FAYETTEVILLE, AR

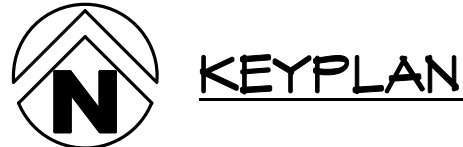
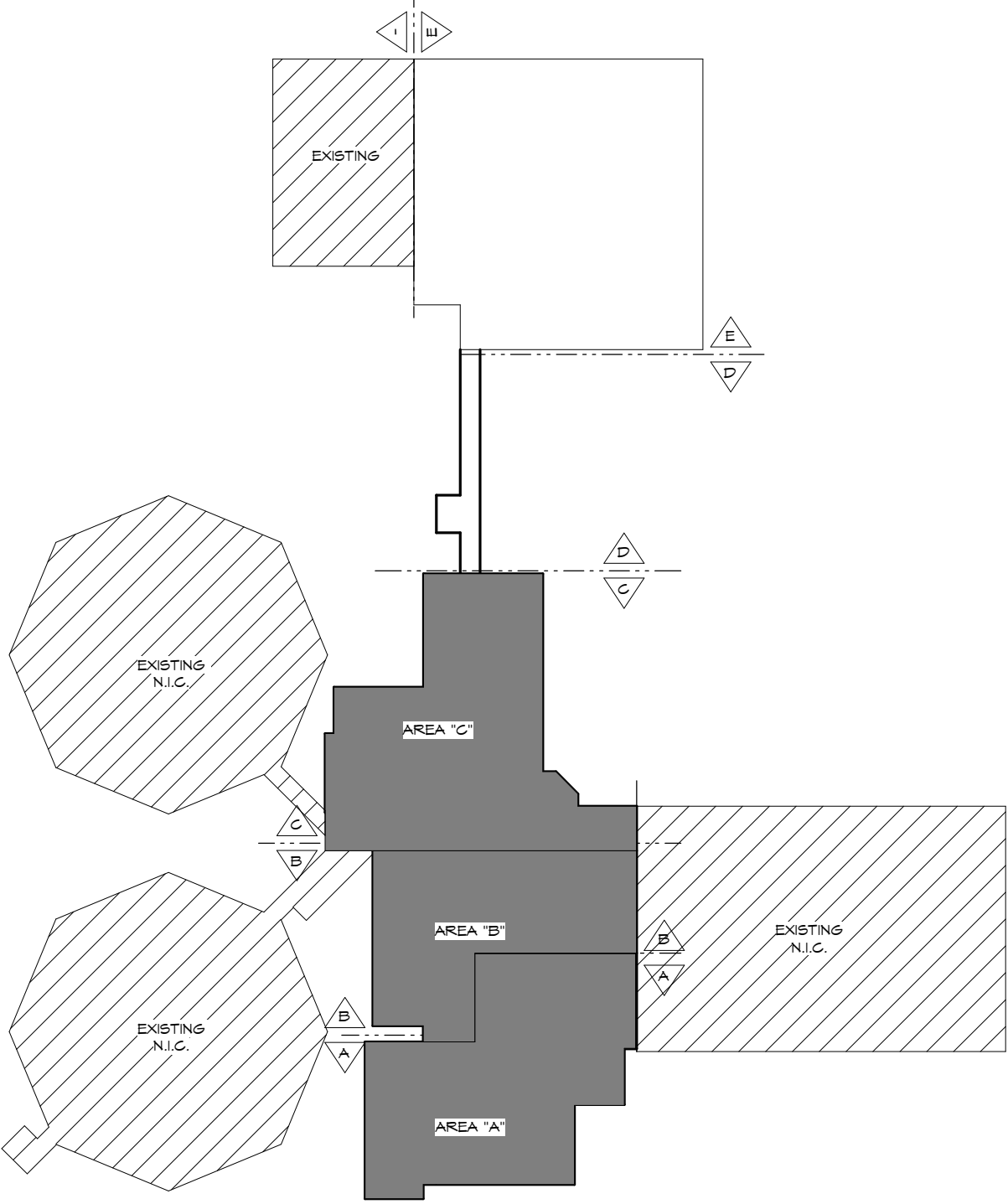
DRAWN BY:
KPH
CHECK BY:
NEW
ISSUE DATE
08/30/2024

PROJECT NO.
2333
REVISION DATES
10/04/2024
11/15/2024

SITE UTILITY PLAN AREA A
SHEET
U2.1A
COPYRIGHT 2024
THESE DRAWINGS AND SPECIFICATIONS ARE
THE EXCLUSIVE PROPERTY OF
HIGHT JACKSON ASSOCIATES P.A.
USE OR REPRODUCTION IS PROHIBITED
WITHOUT WRITTEN CONSENT



NOTES:
REFER TO SHEET P1.1 FOR PLUMBING LEGEND, GENERAL AND KEYED NOTES.
REFER TO SHEETS P2.0 THROUGH P2.0E FOR PLUMBING DEMOLITION PLANS.
REFER TO SHEETS P2.1 THROUGH P2.1E FOR PLUMBING PLANS.
REFER TO SHEET P3.1 FOR PLUMBING DETAILS.
REFER TO SHEETS P4.1 THROUGH P4.11 FOR PLUMBING RISERS.
REFER TO SHEET P5.1 FOR PLUMBING SCHEDULES.



HSAEngineering
479 / 452 / 8922 office
7405 Ellis St.
Fort Smith, AR 72916
HSAConsultants.com

1 SITE UTILITY PLAN - AREA B
1/16" = 1'-0"

Hight Jackson
ASSOCIATES
5201 W Village Parkway, Suite 3001 Rogers, Arkansas 72768 | (479) 464-4965 | www.hjarch.com

AN ADDITION AND REMODEL FOR
Washington Co. Covid Mitigation
FAYETTEVILLE, AR

DRAWN BY:
KPH

CHECK BY:
NEW

ISSUE DATE
08/30/2024

PROJECT NO.
2333

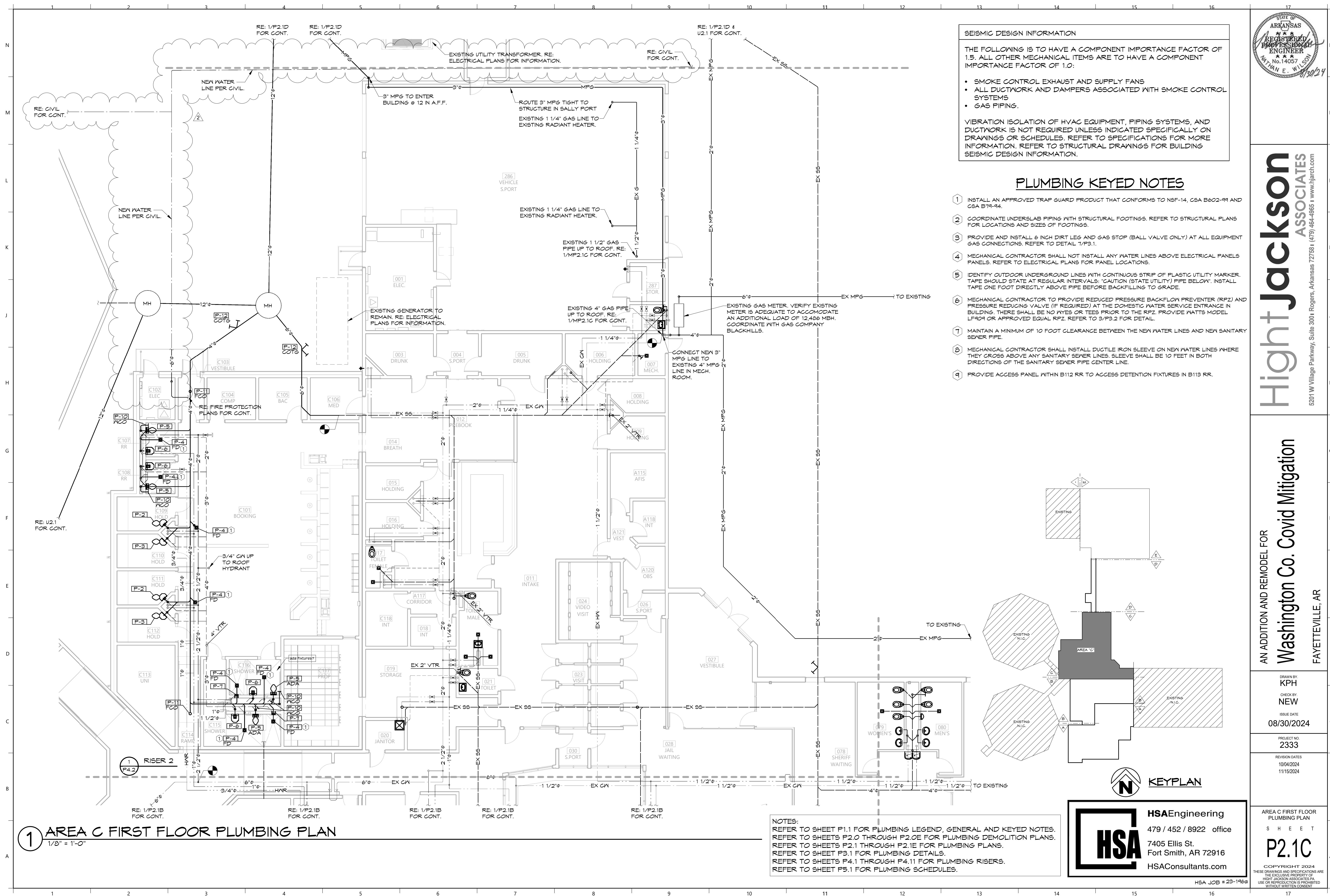
REVISION DATES
10/04/2024
11/15/2024

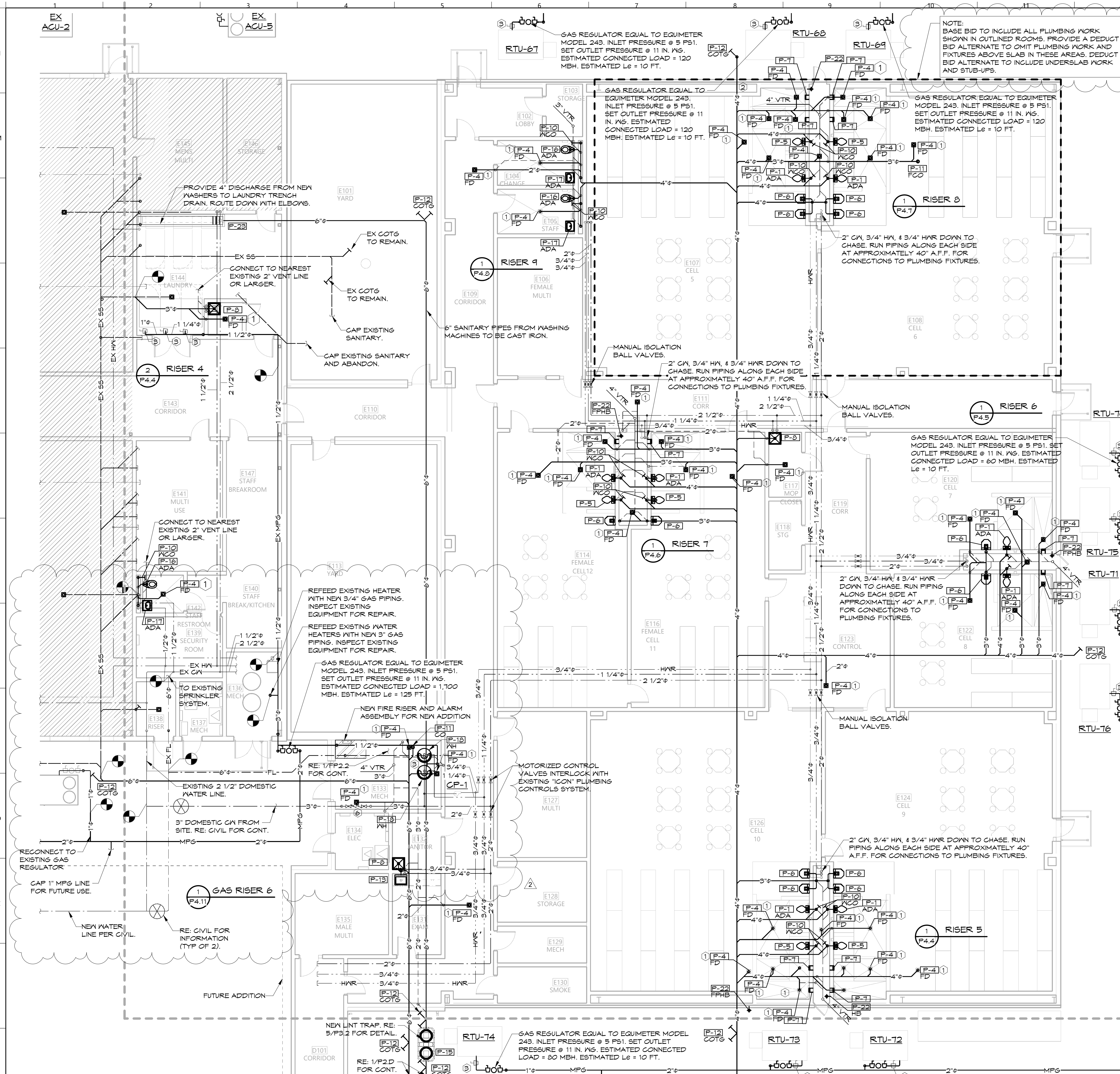
SITE UTILITY PLAN AREA B

S H E E T

U2.1B

COPYRIGHT 2024
THESE DRAWINGS AND SPECIFICATIONS ARE
THE EXCLUSIVE PROPERTY OF
HIGHT JACKSON ASSOCIATES P.A.
USE OR REPRODUCTION IS PROHIBITED
WITHOUT WRITTEN CONSENT





SEISMIC DESIGN INFORMATION

THE FOLLOWING IS TO HAVE A COMPONENT IMPORTANCE FACTOR OF 1.5. ALL OTHER MECHANICAL ITEMS ARE TO HAVE A COMPONENT IMPORTANCE FACTOR OF 1.0:

- SMOKE CONTROL EXHAUST AND SUPPLY FANS
- ALL DUCTWORK AND DAMPERS ASSOCIATED WITH SMOKE CONTROL SYSTEMS
- GAS PIPING.

VIBRATION ISOLATION OF HVAC EQUIPMENT, PIPING SYSTEMS, AND DUCTWORK IS NOT REQUIRED UNLESS INDICATED SPECIFICALLY ON DRAWINGS OR SCHEDULES. REFER TO SPECIFICATIONS FOR MORE INFORMATION. REFER TO STRUCTURAL DRAWINGS FOR BUILDING SEISMIC DESIGN INFORMATION.

PLUMBING KEYED NOTES

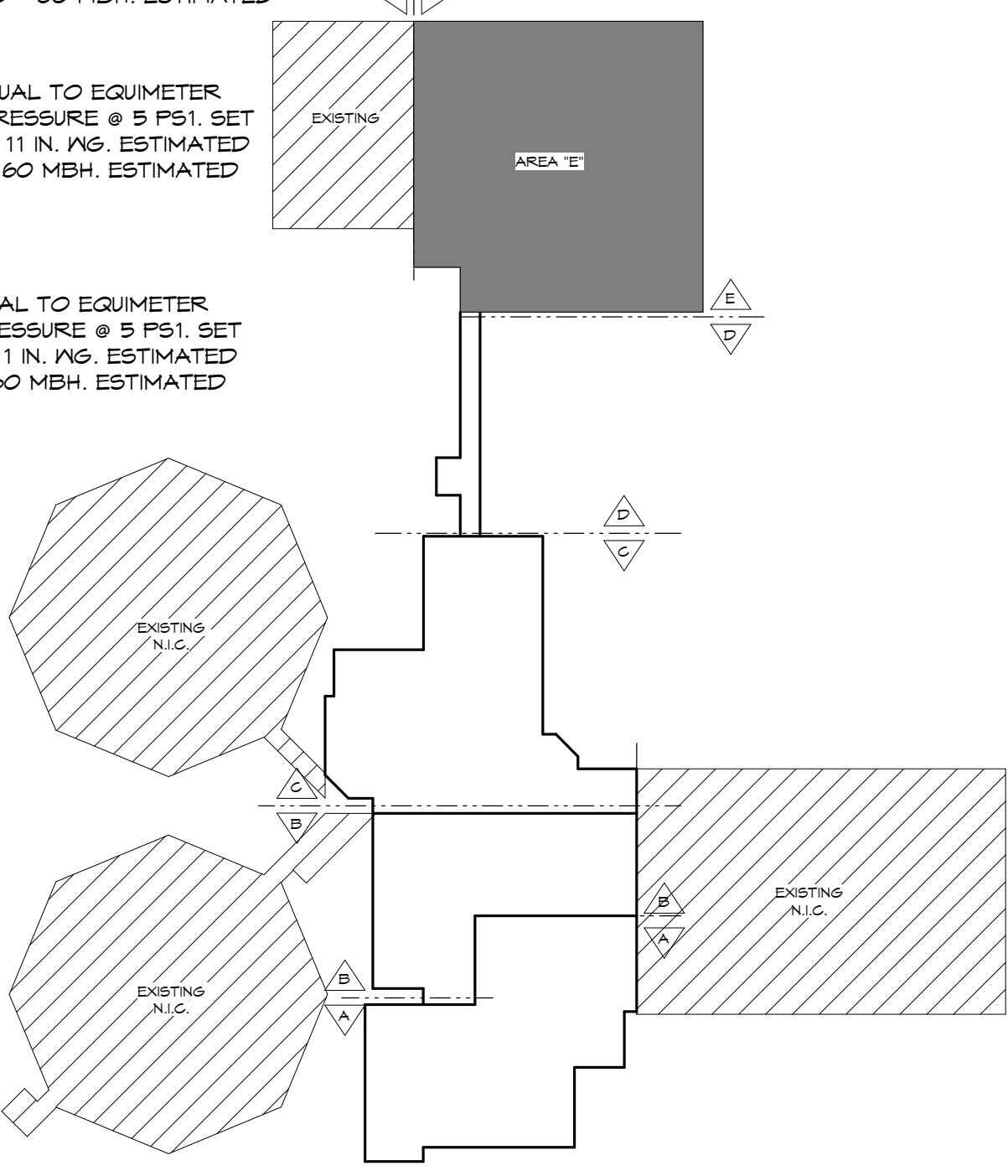
1. INSTALL AN APPROVED TRAP GUARD PRODUCT THAT CONFORMS TO NSF-14, CSA B602-99 AND CSA B79-94.
2. COORDINATE UNDERSLAB PIPING WITH STRUCTURAL FOOTINGS. REFER TO STRUCTURAL PLANS FOR LOCATIONS AND SIZES OF FOOTINGS.
3. PROVIDE AND INSTALL 6 INCH DIRT LEG AND GAS STOP (BALL VALVE ONLY) AT ALL EQUIPMENT GAS CONNECTIONS. REFER TO DETAIL 7/P3.1.
4. MECHANICAL CONTRACTOR SHALL NOT INSTALL ANY WATER LINES ABOVE ELECTRICAL PANELS. REFER TO ELECTRICAL PLANS FOR PANEL LOCATIONS.
5. IDENTIFY OUTDOOR UNDERGROUND LINES WITH CONTINUOUS STRIP OF PLASTIC UTILITY MARKER. TAPE SHOULD STATE AT REGULAR INTERVALS: "CAUTION (STATE UTILITY) PIPE BELOW". INSTALL TAPE ONE FOOT DIRECTLY ABOVE PIPE BEFORE BACKFILLING TO GRADE.
6. MECHANICAL CONTRACTOR TO PROVIDE REDUCED PRESSURE BACKFLOW PREVENTER (RPZ) AND PRESSURE REDUCING VALVE (IF REQUIRED) AT THE DOMESTIC WATER SERVICE ENTRANCE IN BUILDING. THERE SHALL BE NO WYES OR TEES PRIOR TO THE RPZ. PROVIDE WATTS MODEL LF409 OR APPROVED EQUAL RPZ. REFER TO 3/P3.2 FOR DETAIL.
7. MAINTAIN A MINIMUM OF 10 FOOT CLEARANCE BETWEEN THE NEW WATER LINES AND NEW SANITARY SEWER PIPE.
8. MECHANICAL CONTRACTOR SHALL INSTALL DUCTILE IRON SLEEVE ON NEW WATER LINES WHERE THEY CROSS ABOVE ANY SANITARY SEWER LINES. SLEEVE SHALL BE 10 FEET IN BOTH DIRECTIONS OF THE SANITARY SEWER PIPE CENTER LINE.
9. PROVIDE ACCESS PANEL WITHIN B112 RR TO ACCESS DETENTION FIXTURES IN B113 RR.

NOTES:
REFER TO SHEET P1.1 FOR PLUMBING LEGEND, GENERAL AND KEYED NOTES.
REFER TO SHEETS P2.0 THROUGH P2.0E FOR PLUMBING DEMOLITION PLANS.
REFER TO SHEETS P3.1 THROUGH P3.1E FOR PLUMBING PLANS.
REFER TO SHEET P3.1 FOR PLUMBING DETAILS.
REFER TO SHEETS P4.1 THROUGH P4.11 FOR PLUMBING RISERS.
REFER TO SHEET P5.1 FOR PLUMBING SCHEDULES.

GAS REGULATOR EQUAL TO EQUIMETER MODEL 243. INLET PRESSURE @ 5 PSI. SET OUTLET PRESSURE @ 11 IN. WG. ESTIMATED CONNECTED LOAD = 60 MBH. ESTIMATED L_e = 10 FT.

GAS REGULATOR EQUAL TO EQUIMETER MODEL 243. INLET PRESSURE @ 5 PSI. SET OUTLET PRESSURE @ 11 IN. WG. ESTIMATED CONNECTED LOAD = 60 MBH. ESTIMATED L_e = 10 FT.

GAS REGULATOR EQUAL TO EQUIMETER MODEL 243. INLET PRESSURE @ 5 PSI. SET OUTLET PRESSURE @ 11 IN. WG. ESTIMATED CONNECTED LOAD = 60 MBH. ESTIMATED L_e = 10 FT.



HSAEngineering

479 / 452 / 8922 office

7405 Ellis St.

Fort Smith, AR 72916

HSAConsultants.com

1 AREA E FIRST FLOOR PLUMBING PLAN
1/8" = 1'-0"



Hight Jackson
ASSOCIATES

5201 W Village Parkway, Suite 300 | Rogers, Arkansas 72768 | (479) 464-4965 | www.hjarch.com

AN ADDITION AND REMODEL FOR
Washington Co. Covid Mitigation
FAYETTEVILLE, AR

DRAWN BY:
KPH

CHECK BY:
NEW

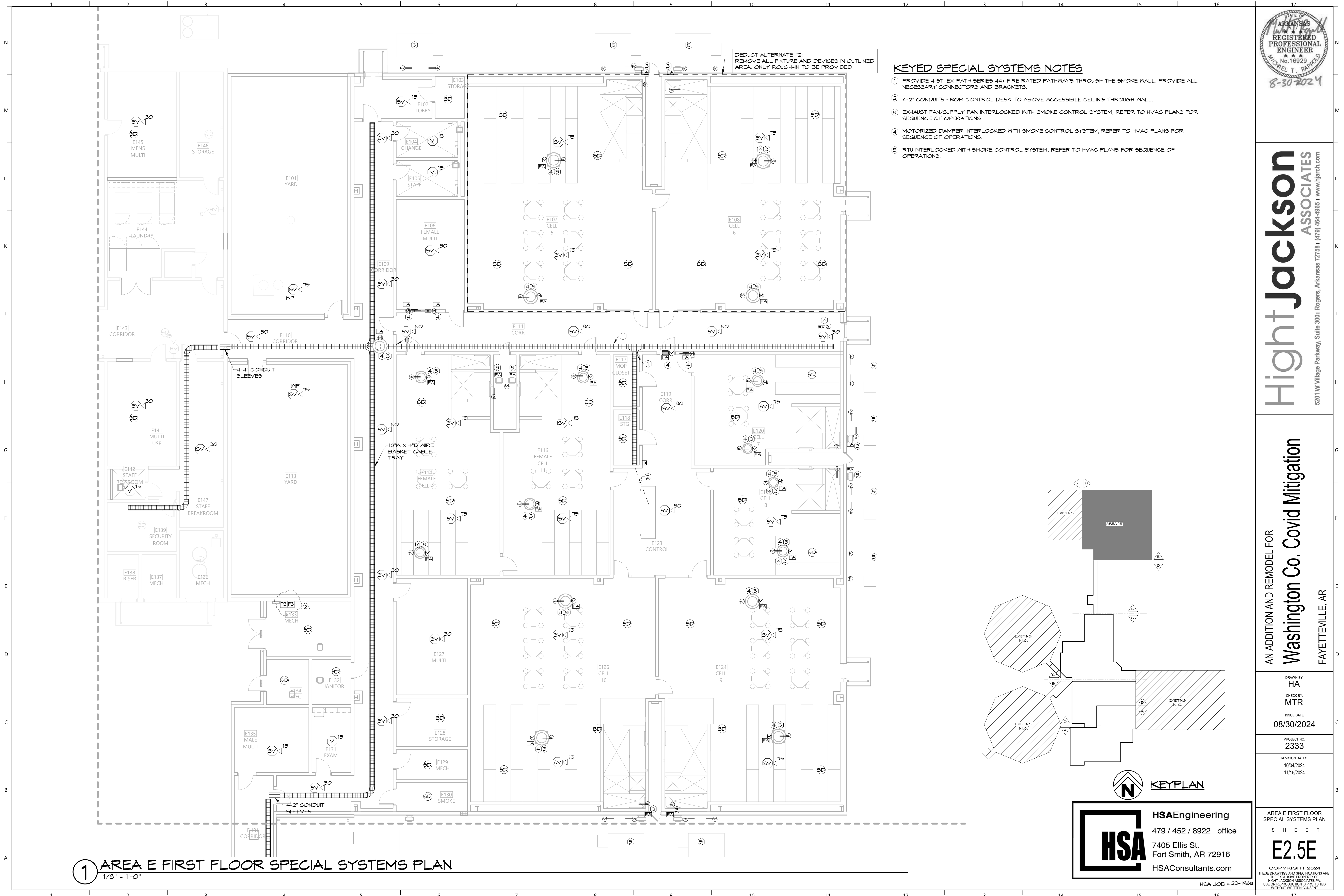
ISSUE DATE
08/30/2024

PROJECT NO.
2333

REVISION DATES
10/04/2024
11/15/2024

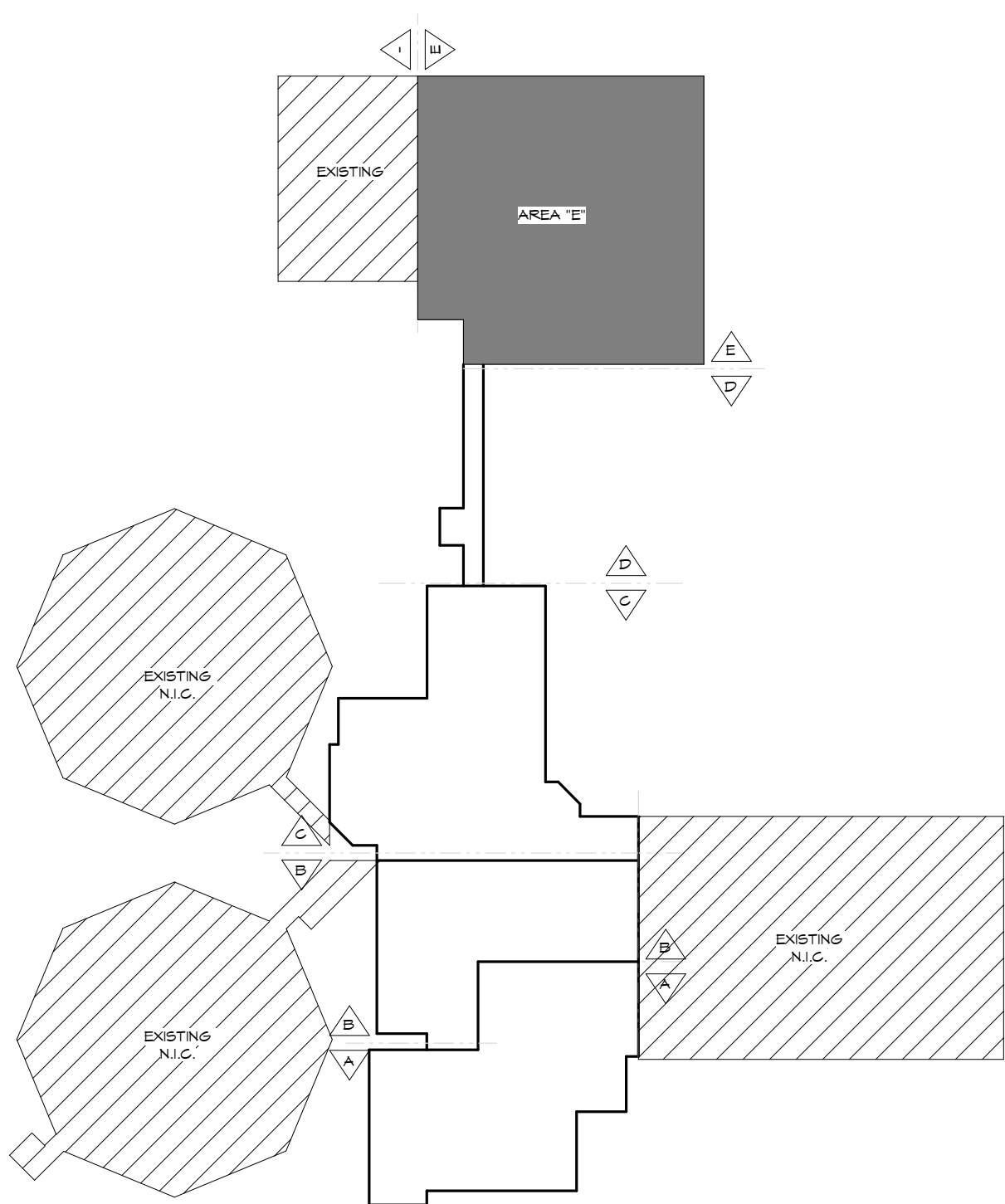
AREA E FIRST FLOOR
PLUMBING PLAN
SHEET
P2.1E

COPYRIGHT 2024
THESE DRAWINGS AND SPECIFICATIONS ARE
THE EXCLUSIVE PROPERTY OF
HIGHT JACKSON ASSOCIATES P.A.
USE OR REPRODUCTION IS PROHIBITED
WITHOUT WRITTEN CONSENT.



KEYED SPECIAL SYSTEMS NOTES

- 1 PROVIDE 4 STI EX-PATH SERIES 44+ FIRE RATED PATHWAYS THROUGH THE SMOKE WALL. PROVIDE ALL NECESSARY CONNECTORS AND BRACKETS.
- 2 4-2" CONDUITS FROM CONTROL DESK TO ABOVE ACCESSIBLE CEILING THROUGH WALL.
- 3 EXHAUST FAN/SUPPLY FAN INTERLOCKED WITH SMOKE CONTROL SYSTEM, REFER TO HVAC PLANS FOR SEQUENCE OF OPERATIONS.
- 4 MOTORIZED DAMPER INTERLOCKED WITH SMOKE CONTROL SYSTEM, REFER TO HVAC PLANS FOR SEQUENCE OF OPERATIONS.
- 5 RTU INTERLOCKED WITH SMOKE CONTROL SYSTEM, REFER TO HVAC PLANS FOR SEQUENCE OF OPERATIONS.





HSAEngineering

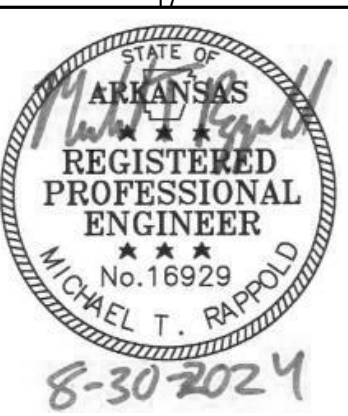
479 / 452 / 8922 office

7405 Ellis St.

Fort Smith, AR 72916

HSAConsultants.com

1 AREA E FIRST FLOOR SPECIAL SYSTEMS PLAN
1/8" = 1'-0"



Hight Jackson
ASSOCIATES

5201 W Village Parkway, Suite 3001 Rogers, Arkansas 72768 | (479) 464-4965 | www.hjarch.com

AN ADDITION AND REMODEL FOR
Washington Co. Covid Mitigation
FAYETTEVILLE, AR

DRAWN BY:
HA

CHECK BY:
MTR

ISSUE DATE:
08/30/2024

PROJECT NO:
2333

REVISION DATES:
10/04/2024
11/15/2024

AREA E FIRST FLOOR
SPECIAL SYSTEMS PLAN
SHEET
E2.5E

COPYRIGHT 2024
THESE DRAWINGS AND SPECIFICATIONS ARE
THE EXCLUSIVE PROPERTY OF
HIGHT JACKSON ASSOCIATES P.A.
USE OR REPRODUCTION IS PROHIBITED
WITHOUT WRITTEN CONSENT