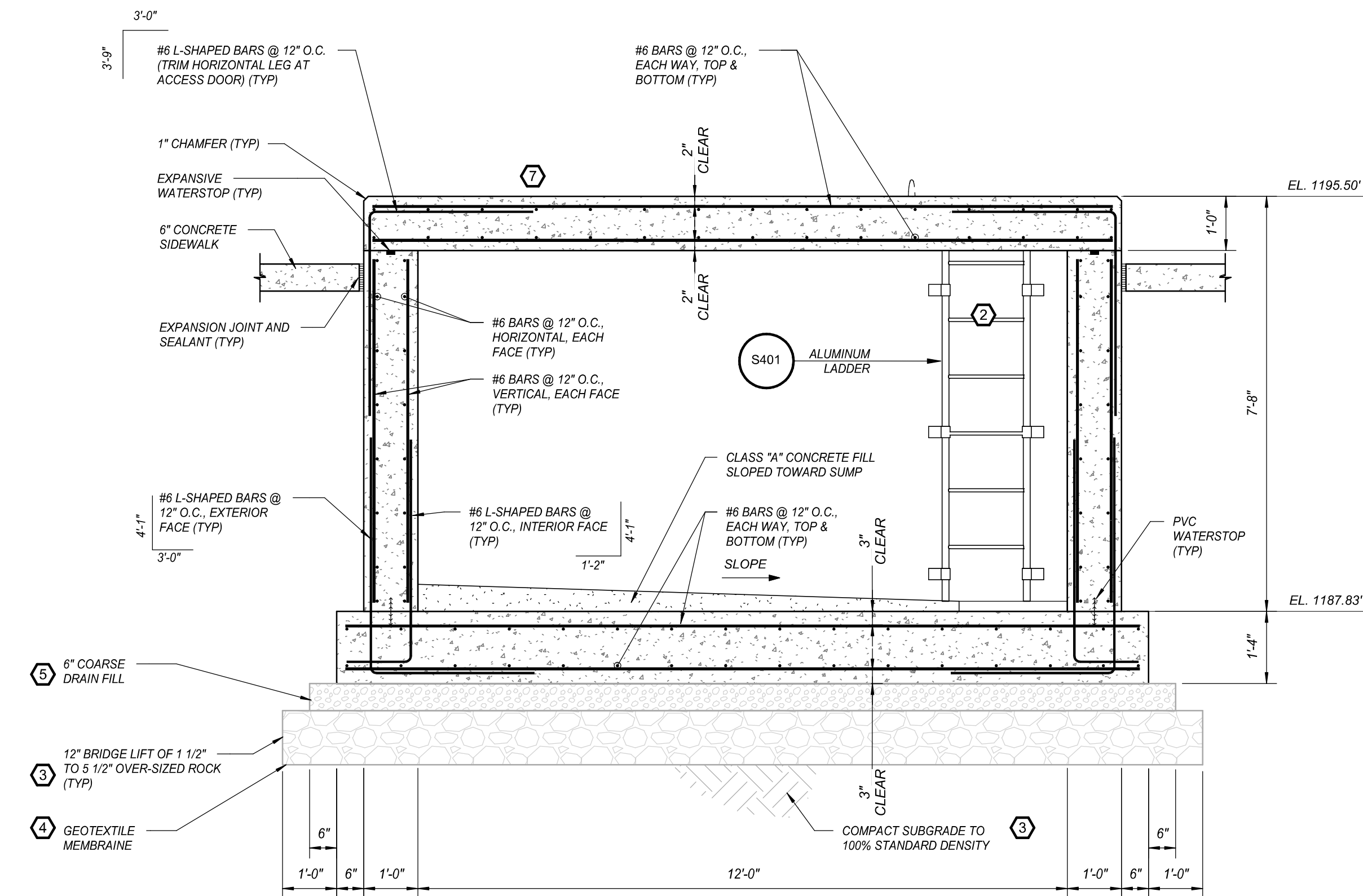
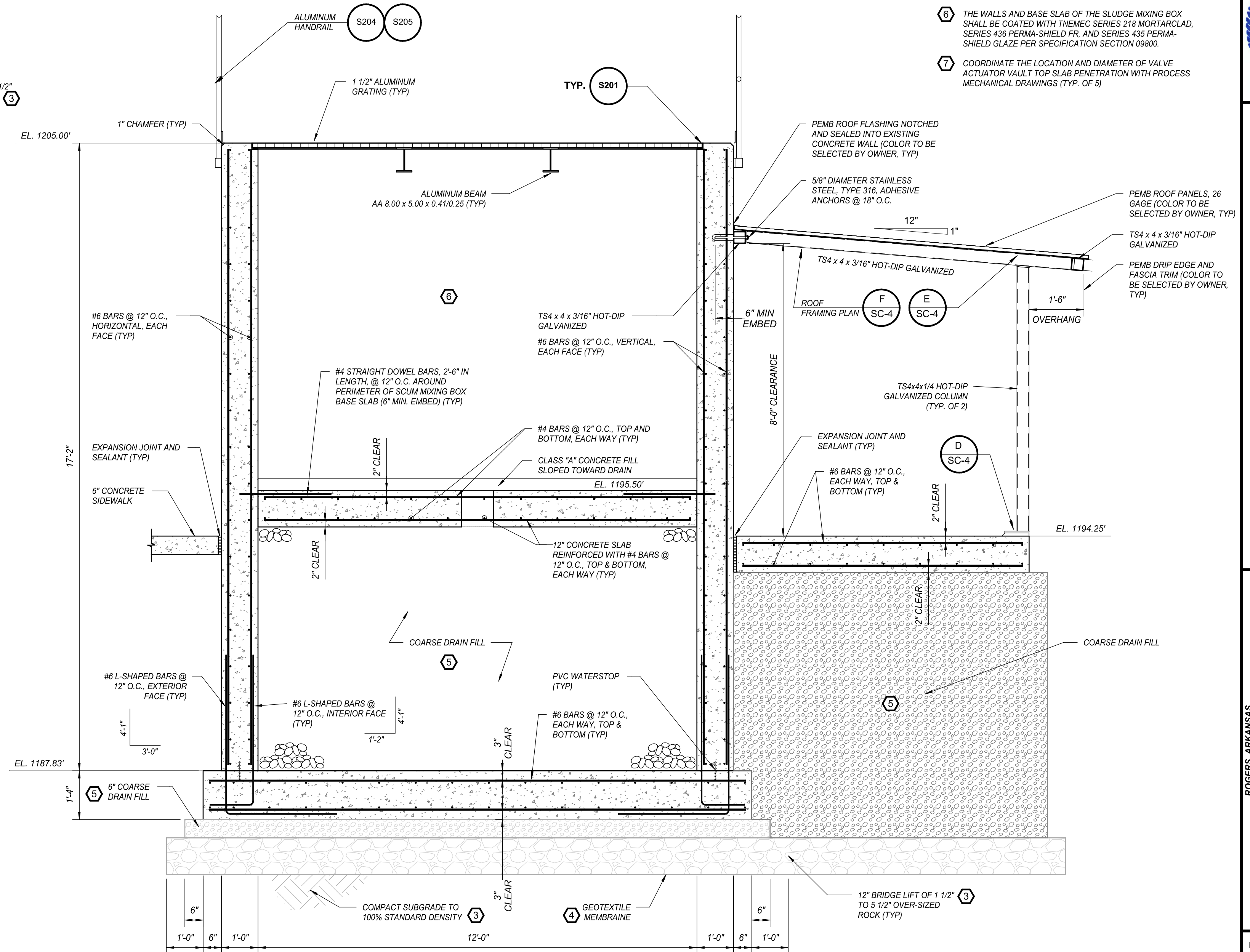


SECTION 2  
1/2" = 1'-0"  
SC-1



SECTION 4  
1/2" = 1'-0"  
SC-1

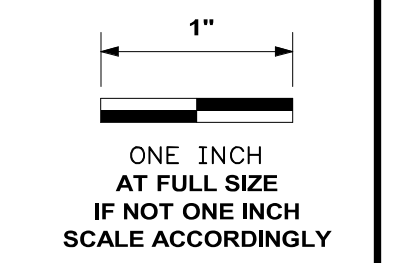


SECTION 3  
1/2" = 1'-0"  
SC-1

- NOTES:
- REFER TO OTHER DISCIPLINE DRAWINGS FOR LOCATION AND SIZE OF WALL AND/OR SLAB PENETRATIONS.
  - COARSE DRAIN FILL PER ASTM C33 (3/4" MAXIMUM AGGREGATE SIZE) SHALL BE PLACED IN MAXIMUM 6" LIFTS AND COMPACTED WITH A VIBRATORY PLATE (MINIMUM OF TWO (2) PASSES PER LIFT).
  - REFER TO SPECIFICATION SECTION 07110 FOR WATERPROOFING OF BELOW GRADE WALLS.
  - ALL EXPOSED VERTICAL CONCRETE SURFACES SHALL RECEIVE A RUBBED FINISH.

KEYED NOTES:

- ACCESS DOOR SHALL BE HALLIDAY PRODUCTS NO. W1S3636, OR EQUAL, AND SHALL INCLUDE OPTIONAL FALL PROTECTION GRATING.
- ALUMINUM LADDER SHALL BE HALLIDAY PRODUCTS SERIES L1B, AND SHALL INCLUDE SERIES L1E LADDER EXTENSION, OR EQUAL.
- CONTRACTOR SHALL COORDINATE WITH THE GEOTECHNICAL ENGINEER OF RECORD TO CONFIRM THE SUBGRADE BEARING STRUTUM PRIOR TO PLACING AND COMPACTING THE BRIDGE LIFT MATERIAL. 12" BRIDGE LIFT MAY BE OMITTED IF THE SPECIFIED COMPACTION OF THE SUBGRADE CAN BE ACHIEVED.
- GEOTEXTILE MEMBRANE SHALL BE MIRAFI HP270, OR APPROVED EQUAL, AND SHALL ENCAPSULATE THE BOTTOM AND SIDES OF THE BRIDGE LIFT MATERIAL.
- COARSE DRAIN FILL PER ASTM C33 (3/4" MAXIMUM AGGREGATE SIZE) SHALL BE PLACED IN MAXIMUM 6" LIFTS AND COMPACTED WITH A VIBRATORY PLATE (MINIMUM OF TWO (2) PASSES PER LIFT).
- THE WALLS AND BASE SLAB OF THE SLUDGE MIXING BOX SHALL BE COATED WITH THEMEC SERIES 218 MORTARCLAD, SERIES 436 PERMA-SHIELD FR, AND SERIES 438 PERMA-SHIELD GLAZE PER SPECIFICATION SECTION 09800.
- COORDINATE THE LOCATION AND DIAMETER OF VALVE ACTUATOR VAULT TOP SLAB PENETRATION WITH PROCESS MECHANICAL DRAWINGS (TYP. OF 5).



DATE	REVISION



ROGERS, ARKANSAS  
ROGERS POLLUTION CONTROL FACILITY (PCF)  
SOLIDS HANDLING IMPROVEMENTS, PHASE II  
SLUDGE MIXING BOX SECTIONS  
FOR: ROGERS WATER UTILITIES

DATE: AUGUST 2024  
SCALE: 1/2" = 1'-0"  
DESIGNED BY: BDP  
DRAWN BY: ADF  
HWEI NO.: 2020043  
FILENAME: S-SLUDGE MIXING BOX  
SHEET NO. SC-3