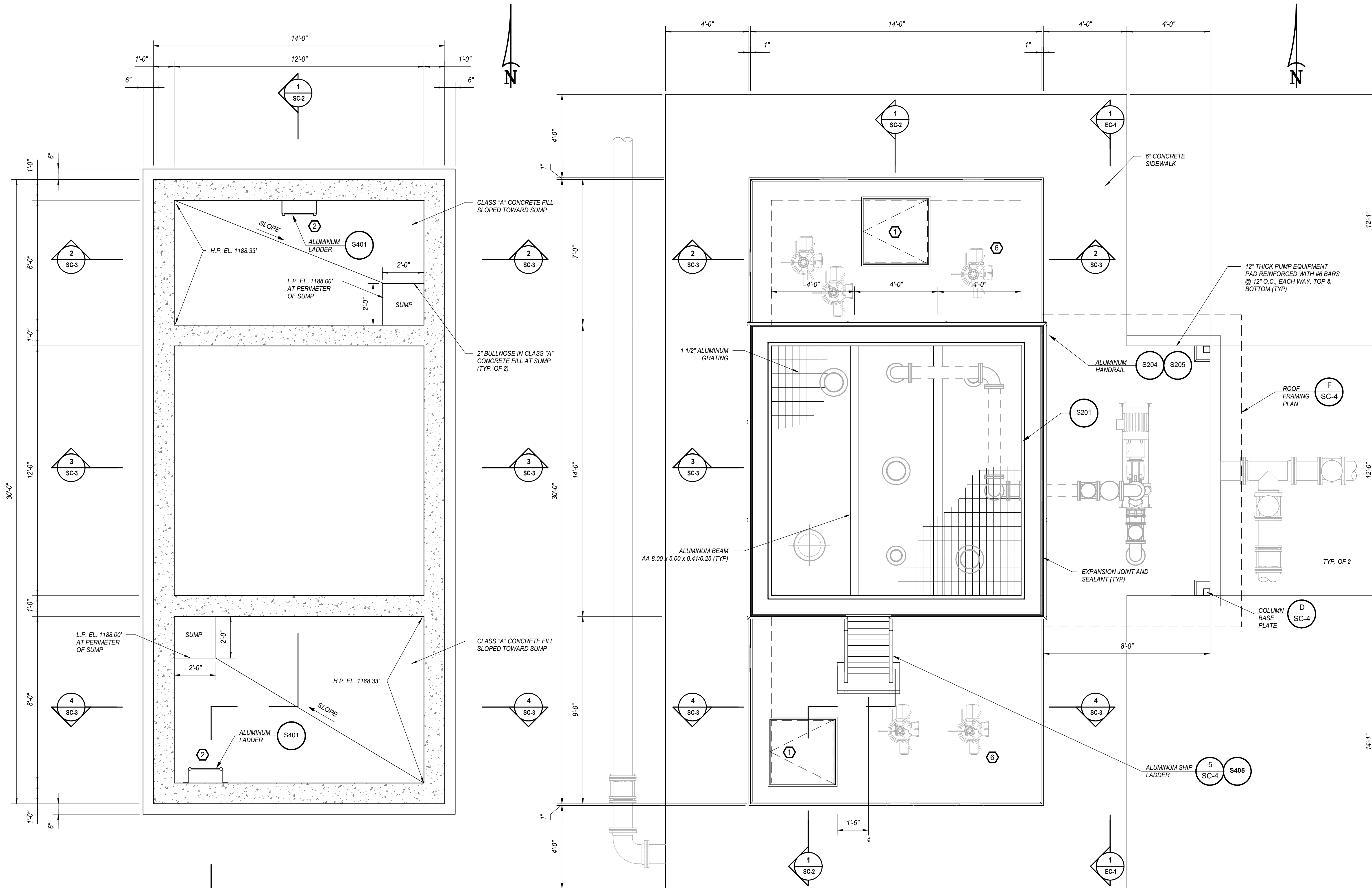


8/29/2024 9:41:25 AM / ADF / SLUDGE MIXING BOX DETAILS

Autodesk Docs://108493 - Rogers PCF Solids Phase 2-SLUDGE MIXING BOX.rvt

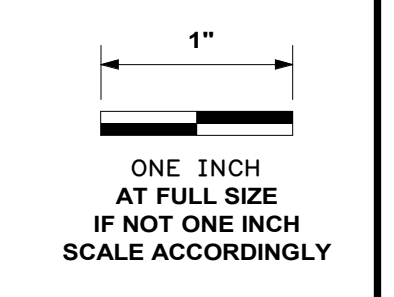


1 SC-2
 SLUDGE MIXING BOX LOWER PLAN
 DETAIL A
 3/8" = 1'-0"

1 SC-2
 SLUDGE MIXING BOX UPPER PLAN
 DETAIL B
 3/8" = 1'-0"

- NOTES:
- REFER TO OTHER DISCIPLINE DRAWINGS FOR LOCATION AND SIZE OF WALL AND/OR SLAB PENETRATIONS.
 - COARSE DRAIN FILL PER ASTM C33 (3/4" MAXIMUM AGGREGATE SIZE) SHALL BE PLACED IN MAXIMUM 6" LIFTS AND COMPACTED WITH A VIBRATORY PLATE (MINIMUM OF TWO (2) PASSES PER LIFT).
 - REFER TO SPECIFICATION SECTION 07110 FOR WATERPROOFING OF BELOW GRADE WALLS.
 - ALL EXPOSED VERTICAL CONCRETE SURFACES SHALL RECEIVE A RUBBED FINISH.

- KEYED NOTES:
- ACCESS DOOR SHALL BE HALLIDAY PRODUCTS NO. W1S3636, OR EQUAL, AND SHALL INCLUDE OPTIONAL FALL PROTECTION GRATING.
 - ALUMINUM LADDER SHALL BE HALLIDAY PRODUCTS SERIES L1B, AND SHALL INCLUDE SERIES L1E LADDER EXTENSION, OR EQUAL.
 - CONTRACTOR SHALL COORDINATE WITH THE GEOTECHNICAL ENGINEER OF RECORD TO CONFIRM THE SUBGRADE BEARING STRATUM PRIOR TO PLACING AND COMPACTING THE BRIDGE LIFT MATERIAL. 12" BRIDGE LIFT MAY BE OMITTED IF THE SPECIFIED COMPACTION OF THE SUBGRADE CAN BE ACHIEVED.
 - GEOTEXTILE MEMBRANE SHALL BE MIRAFI HP270, OR APPROVED EQUAL, AND SHALL ENCAPSULATE THE BOTTOM AND SIDES OF THE BRIDGE LIFT MATERIAL.
 - COARSE DRAIN FILL PER ASTM C33 (3/4" MAXIMUM AGGREGATE SIZE) SHALL BE PLACED IN MAXIMUM 6" LIFTS AND COMPACTED WITH A VIBRATORY PLATE (MINIMUM OF TWO (2) PASSES PER LIFT).
 - COORDINATE THE LOCATION AND DIAMETER OF VALVE ACTUATOR VAULT TOP SLAB PENETRATION WITH PROCESS MECHANICAL DRAWINGS (TYP. OF 5).



DATE	REVISION



HAWKINS WEIR ENGINEERS, INC.
BLACK & VEATCH

ROGERS, ARKANSAS
 ROGERS POLLUTION CONTROL FACILITY (PCF)
 SOLIDS HANDLING IMPROVEMENTS, PHASE II
 SLUDGE MIXING BOX DETAILS
 FOR: ROGERS WATER UTILITIES

DATE: AUGUST 2024
 SCALE: 3/8" = 1'-0"
 DESIGNED BY: BDP
 DRAWN BY: ADF
 HWEI NO.: 2020043
 FILENAME: S-SLUDGE MIXING BOX
 SHEET NO. SC-1