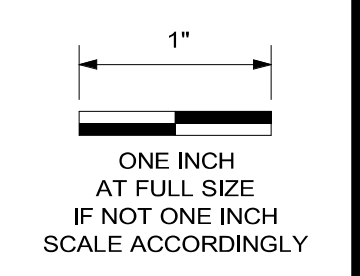
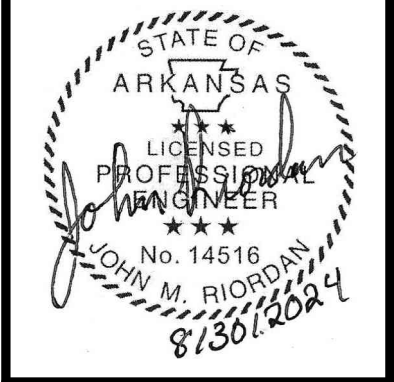


8/26/2024 10:03:22 AM TPL BUILDING COLUMN AND SLAB PLAN AND DETAILS

Autodesk Docs\CSE23068 HW Rogers PCF Phase2 SH Improv\406493-Maintenance Building-CSE.rvt



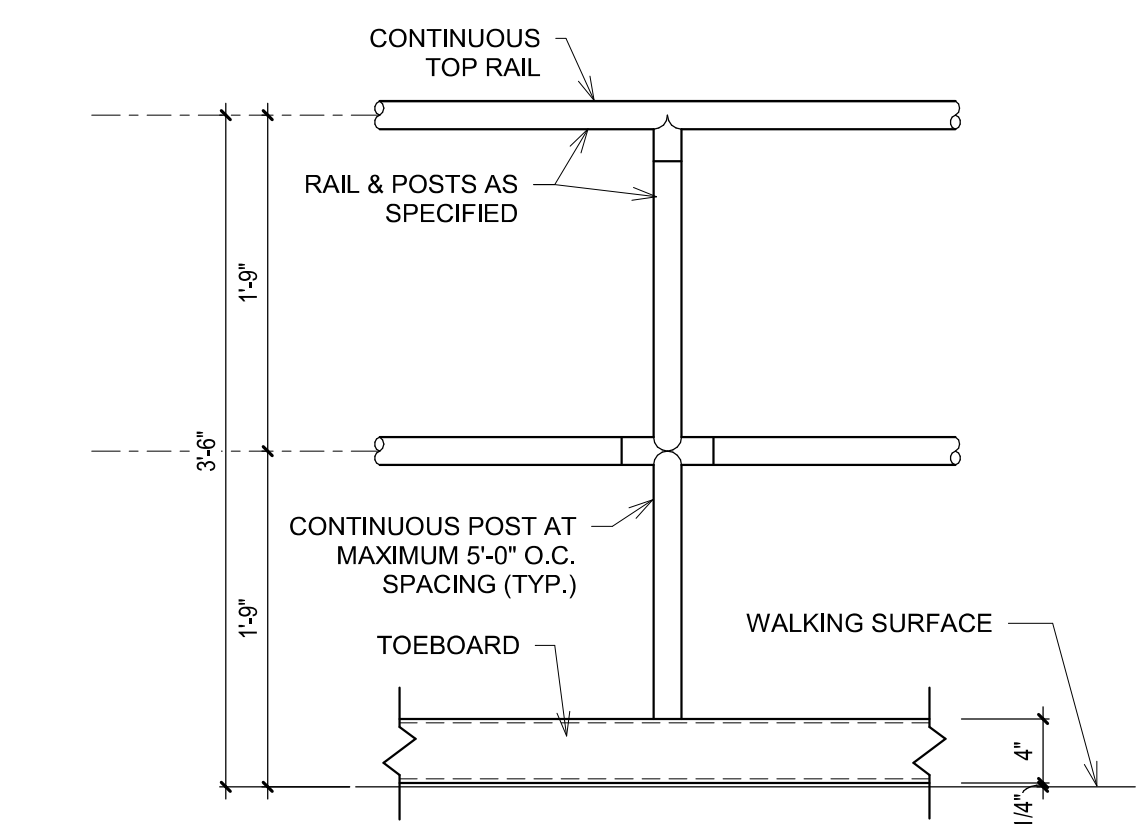
DATE	
REVISION	



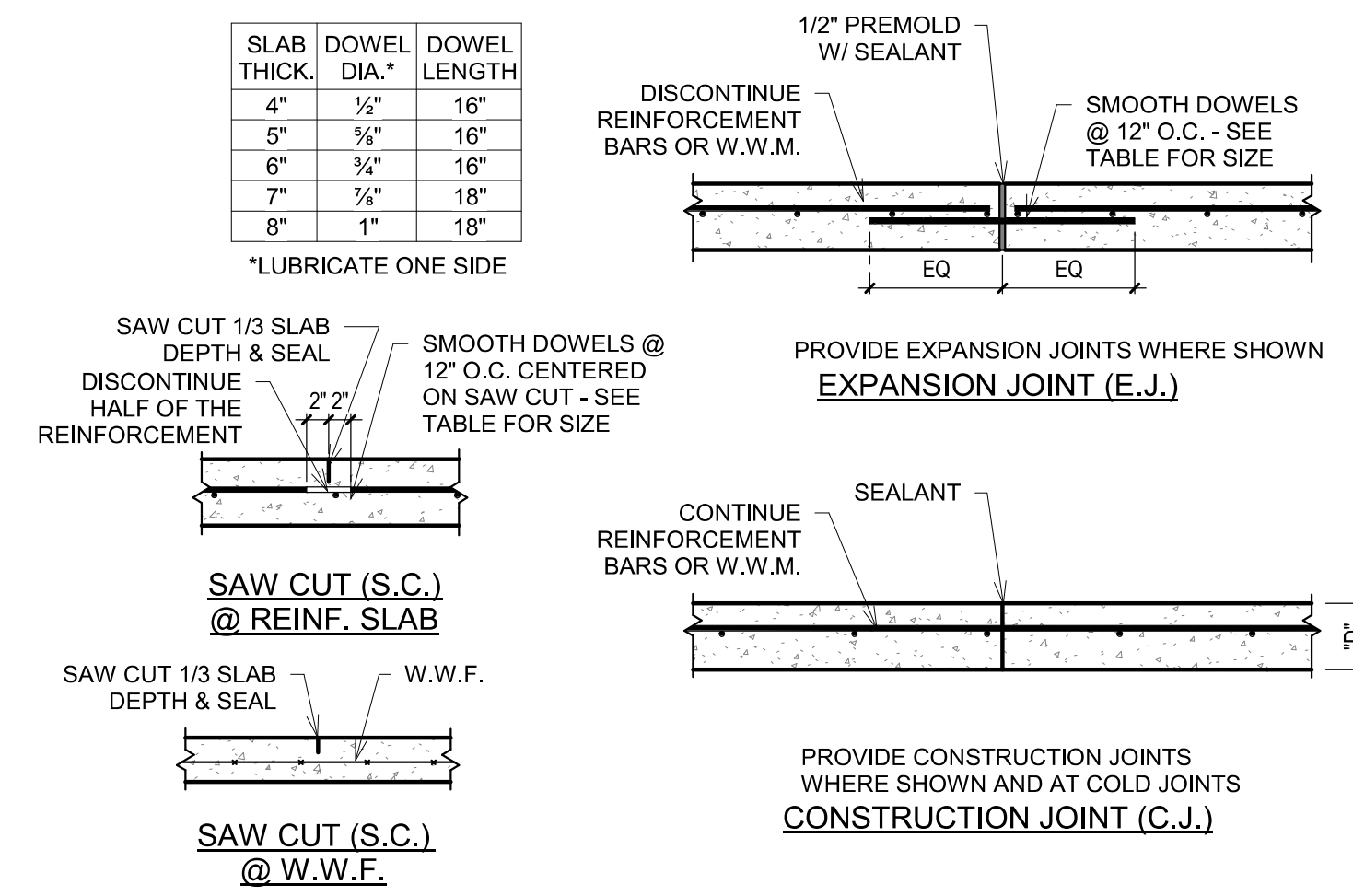
HAWKINS WEIR ENGINEERS, INC.
CSE CORNERSTONE
 STRUCTURAL ENGINEERING, INC.

ROGERS, ARKANSAS
 ROGERS POLLUTION CONTROL FACILITY (PCF)
 SOLIDS HANDLING IMPROVEMENTS, PHASE II
 MAINTENANCE BUILDING
 BUILDING COLUMN AND SLAB PLAN AND DETAILS
 ROGERS WATER UTILITIES

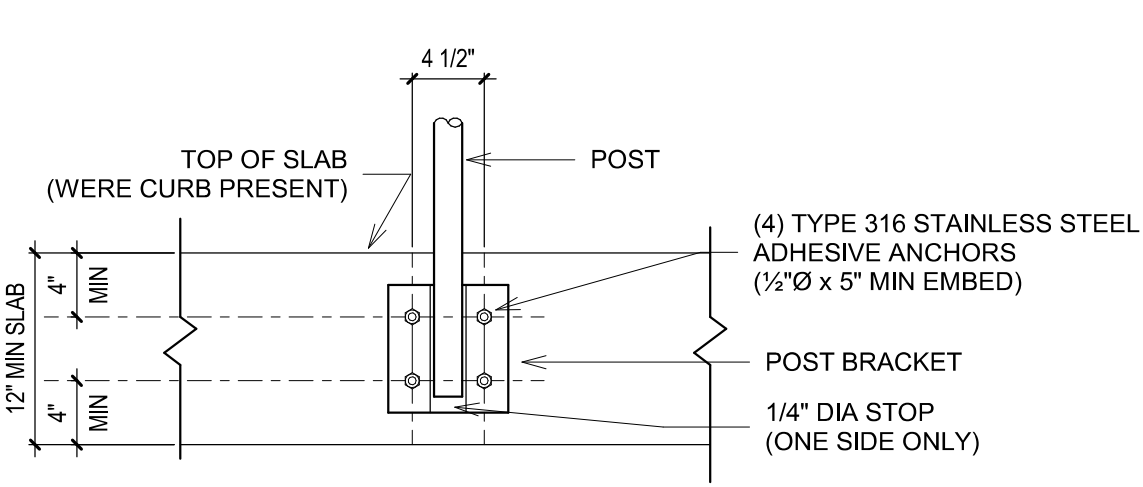
DATE: AUGUST 2024
 SCALE: As indicated
 DESIGNED BY: JMR
 DRAWN BY: TPL
 HWEI NO.: 2020043
 FILENAME: SB-04
 SHEET NO. **SB-04**



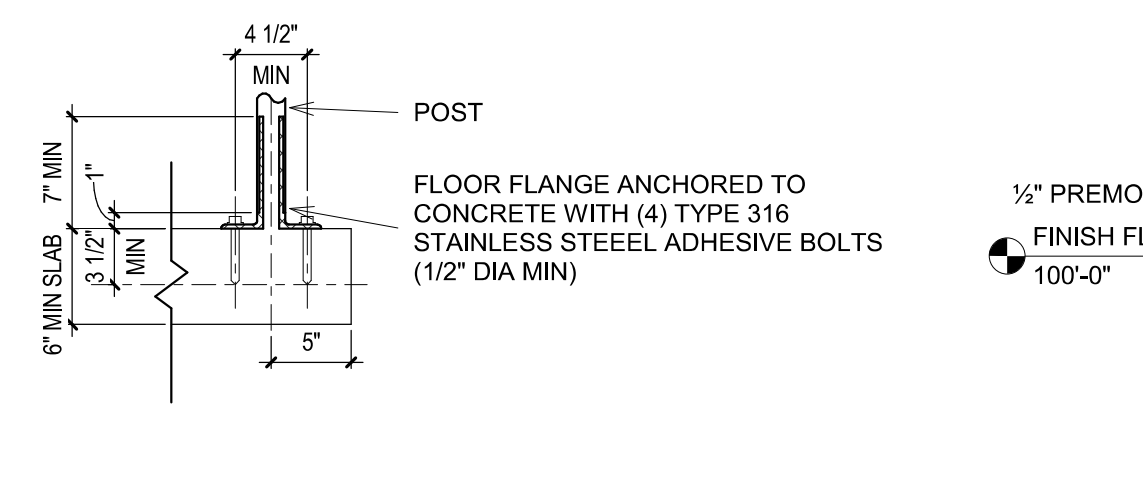
2 ALUMINUM HANDRAIL
 1" = 1'-0"



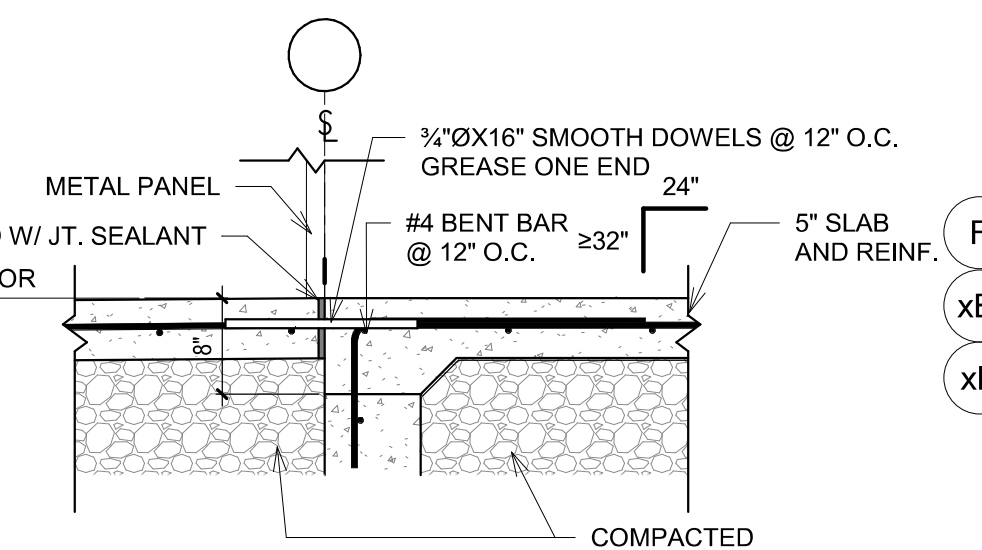
A SLAB JOINT DETAILS
 3/4" = 1'-0"



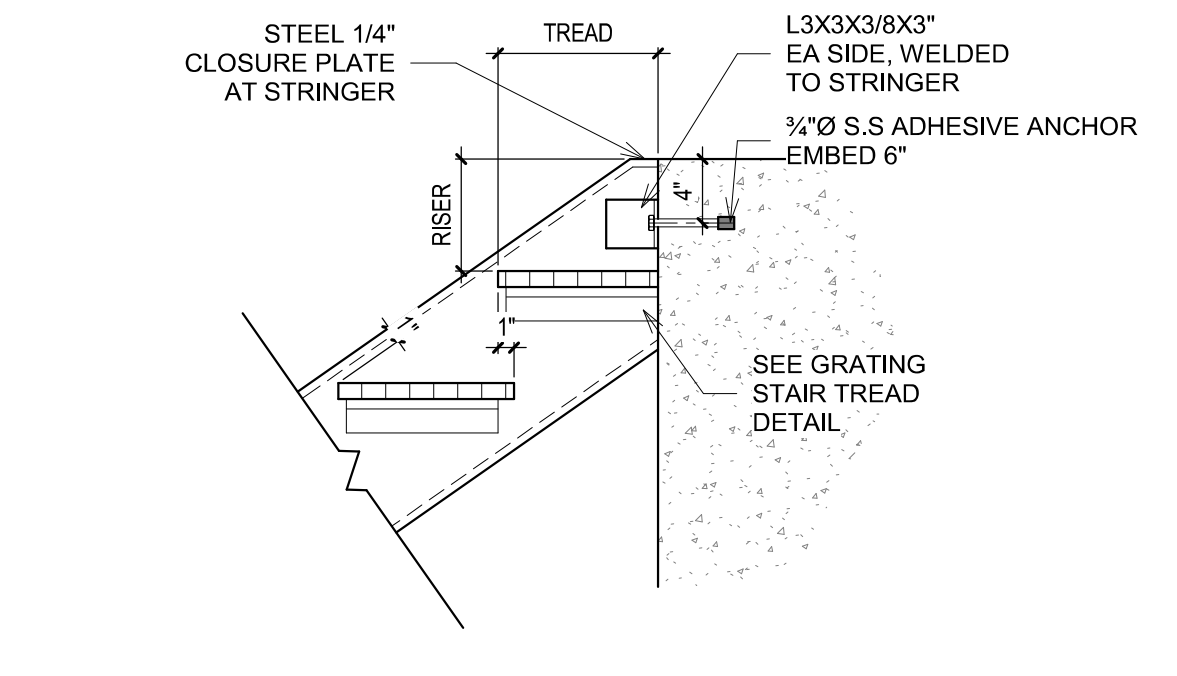
5 SIDE-MOUNTED TO CONC. ALUMINUM HANDRAIL POST
 1" = 1'-0"



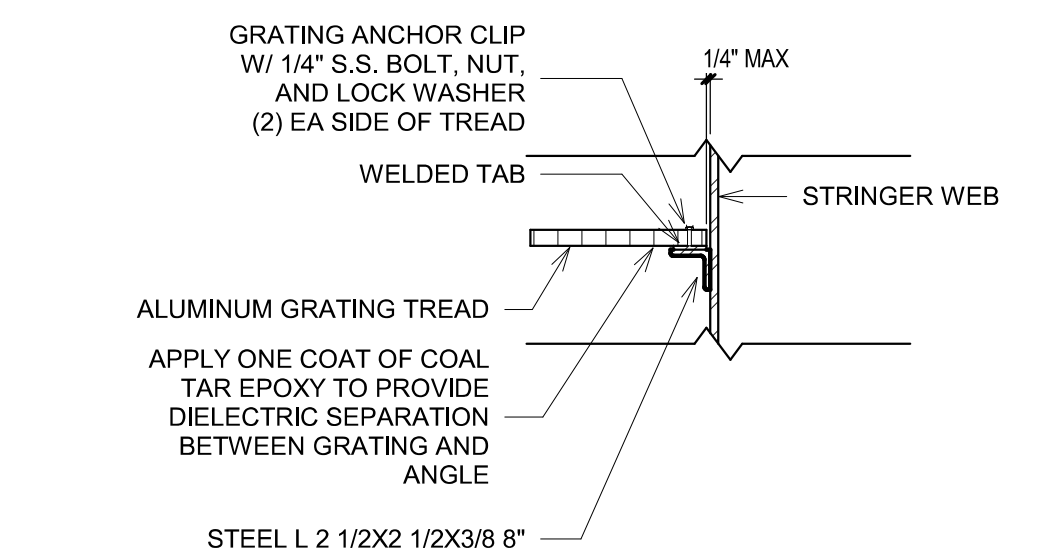
4 TOP-MOUNTED TO CONC. ALUMINUM HANDRAIL POST
 1" = 1'-0"



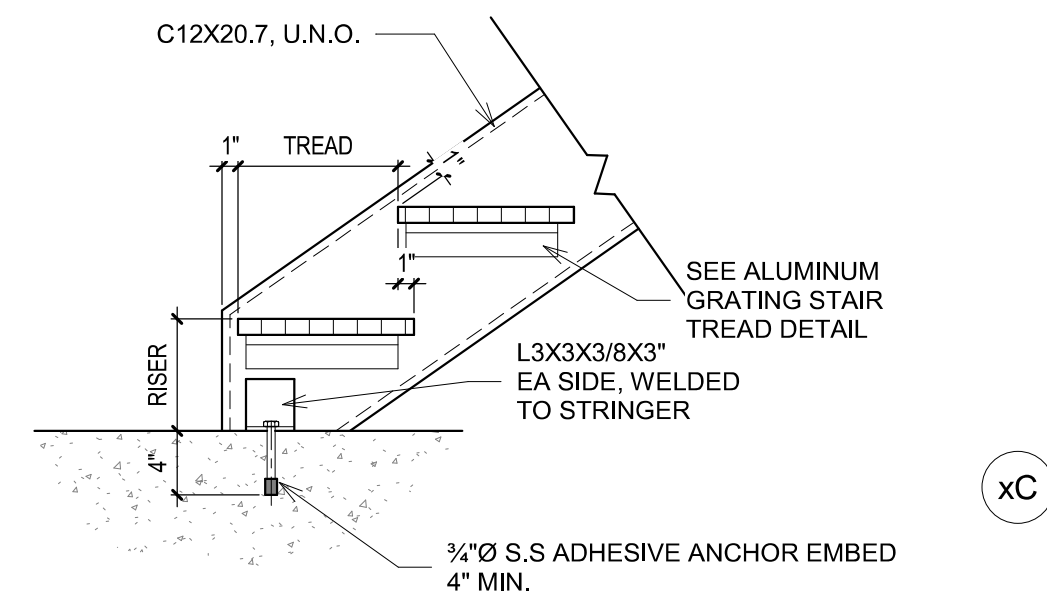
3 SLAB SECTION AT DOCK TO BLDG SLAB
 3/4" = 1'-0"



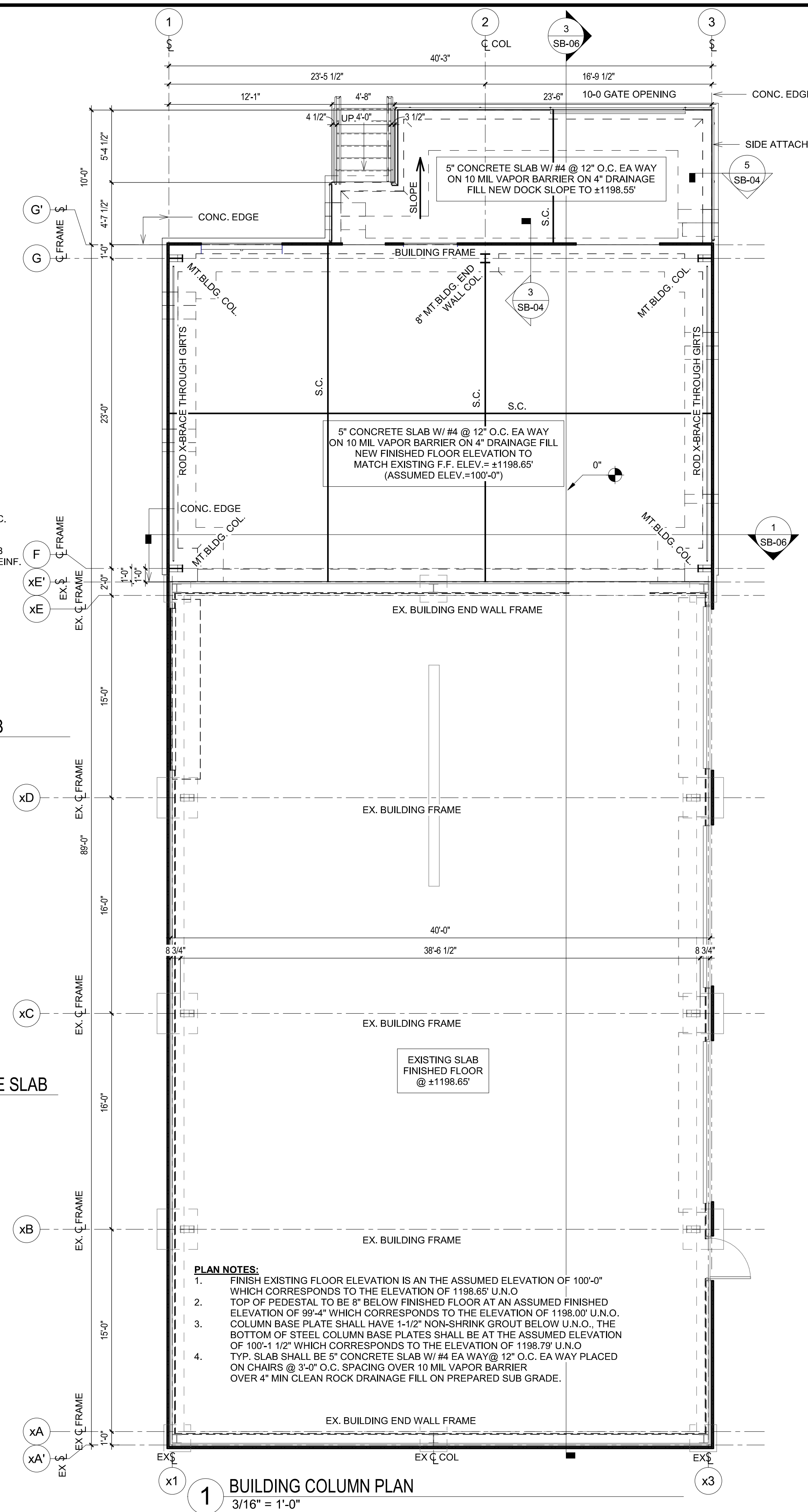
7 STRINGER TOP CONNECTION AT CONCRETE SLAB
 1" = 1'-0"



B ALUMINUM GRATED STAIR TREAD DETAIL
 1" = 1'-0"



6 STRINGER BASE CONNECTION AT CONCRETE SLAB
 1" = 1'-0"



- PLAN NOTES:**
- FINISH EXISTING FLOOR ELEVATION IS AN ASSUMED ELEVATION OF 100'-0" WHICH CORRESPONDS TO THE ELEVATION OF 1198.65' U.N.O.
 - TOP OF PEDESTAL TO BE 8" BELOW FINISHED FLOOR AT AN ASSUMED FINISHED ELEVATION OF 99'-4" WHICH CORRESPONDS TO THE ELEVATION OF 1198.00' U.N.O.
 - COLUMN BASE PLATE SHALL HAVE 1-1/2" NON-SHRINK GROUT BELOW U.N.O. THE BOTTOM OF STEEL COLUMN BASE PLATES SHALL BE AT THE ASSUMED ELEVATION OF 100'-1 1/2" WHICH CORRESPONDS TO THE ELEVATION OF 1198.79' U.N.O.
 - TYP. SLAB SHALL BE 5" CONCRETE SLAB W/ #4 EA WAY @ 12" O.C. EA WAY PLACED ON CHAIRS @ 3'-0" O.C. SPACING OVER 10 MIL VAPOR BARRIER OVER 4" MIN CLEAN ROCK DRAINAGE FILL ON PREPARED SUB GRADE.

1 BUILDING COLUMN PLAN
 3/16" = 1'-0"