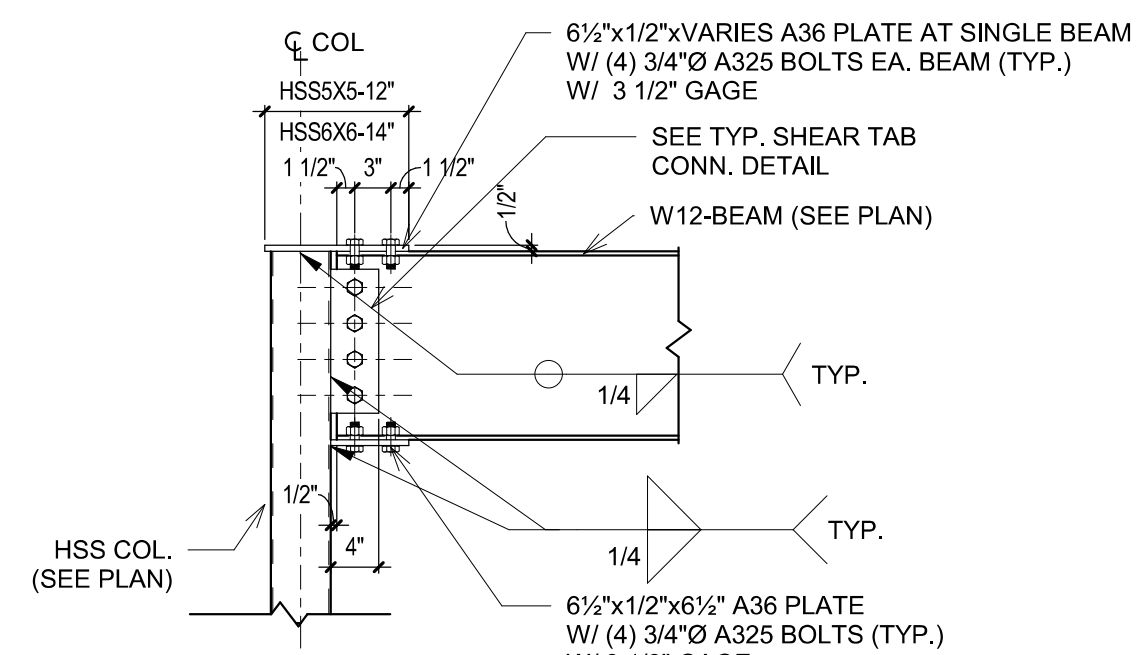


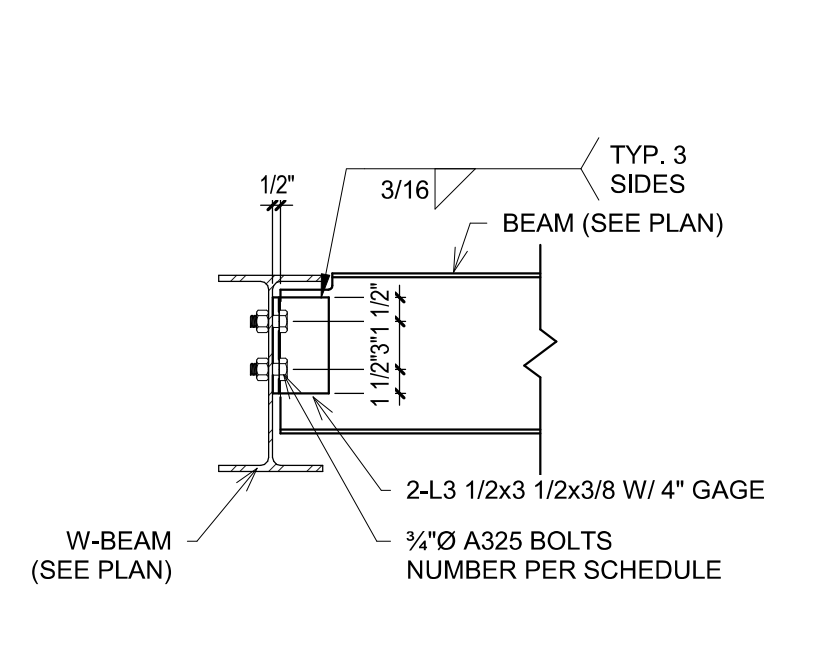
# BOLT SCHEDULE

BEAM DEPTH	ROWS OF BOLTS
8" & 10" BEAMS	2 ROWS
12" & 14" BEAMS	3 ROWS
16" BEAMS	4 ROWS
18" BEAMS	5 ROWS
21 & 24" BEAMS	6 ROWS
27" BEAMS	7 ROWS
30" BEAMS	8 ROWS
33" BEAMS	9 ROWS
36" BEAMS	10 ROWS

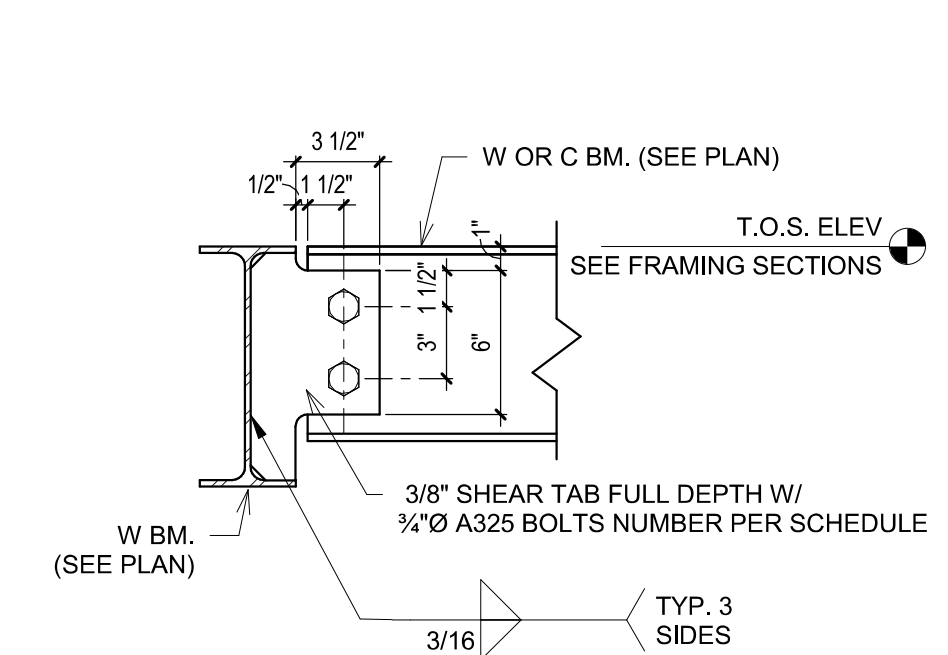
BOLTS TO BE 3/4" A325 FOR W8 TO W24 BEAMS  
7/8" A325 FOR W27 TO W36 BEAMS U.N.O.



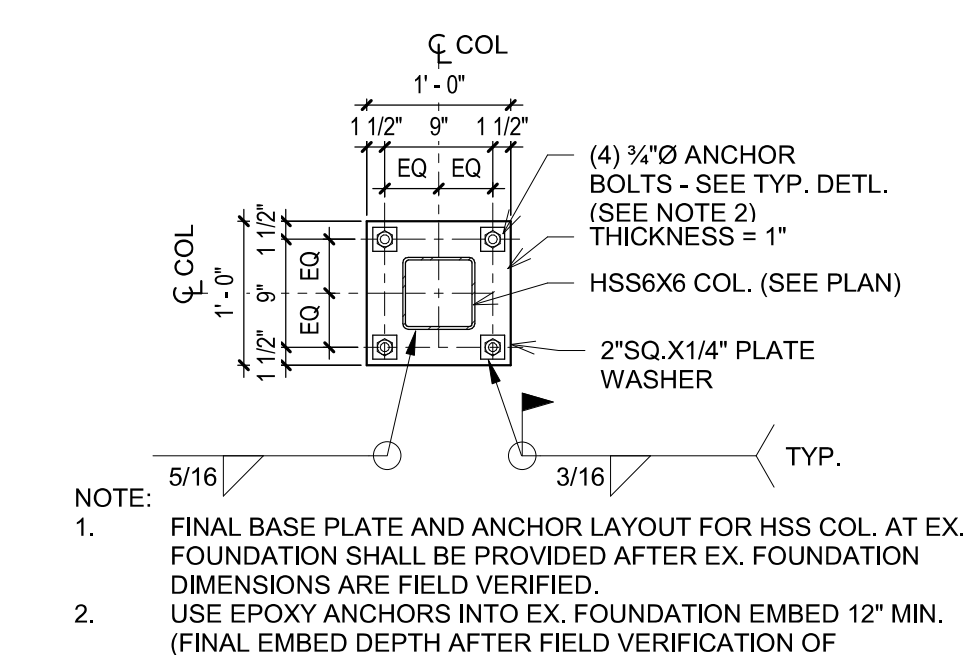
5 MOMENT CONN. TO HSS COL.  
3/4" = 1'-0"



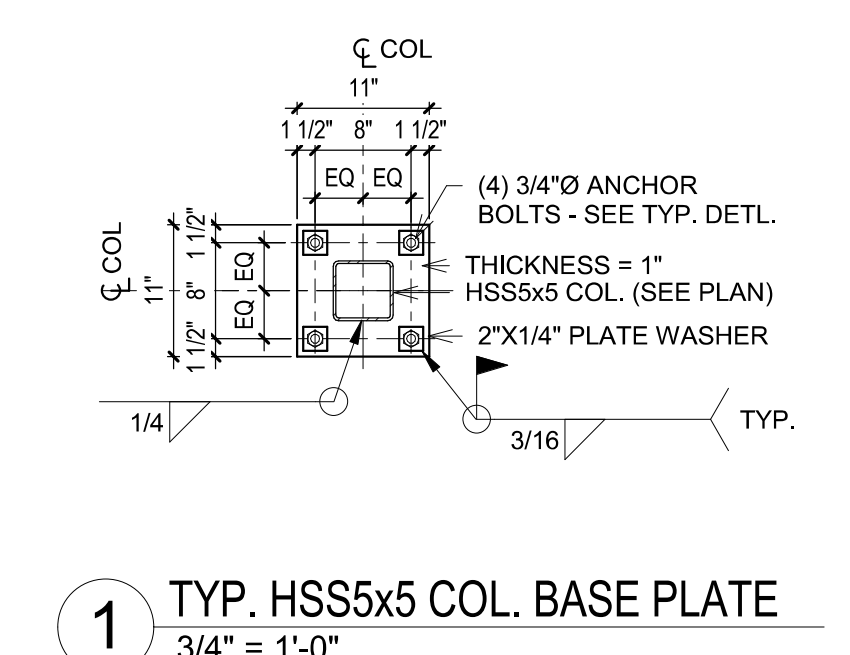
4 TYP. BM. TO BM. DL. ANGLE CONN.  
1" = 1'-0"



3 TYP. BEAM TO BEAM CONNECTION  
1 1/2" = 1'-0"



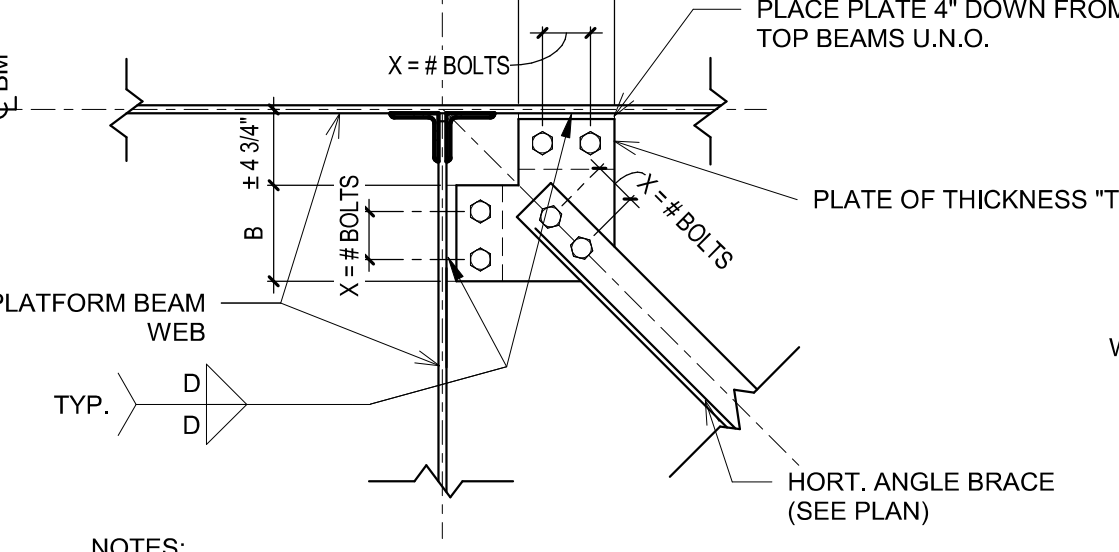
2 TYP. HSS6X6 COL. BASE PLATE  
3/4" = 1'-0"



1 TYP. HSS5x5 COL. BASE PLATE  
3/4" = 1'-0"

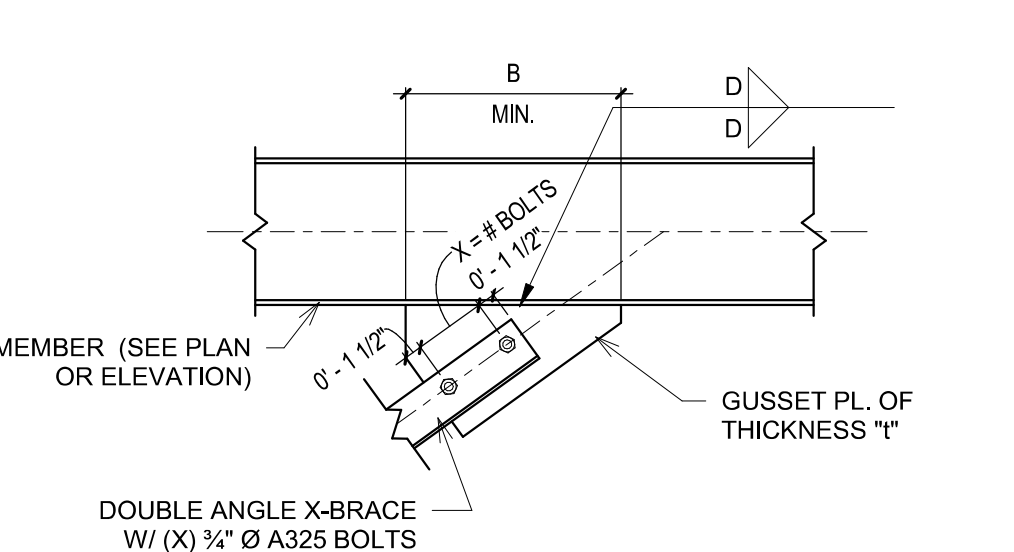
## A BOLT SCHEDULE

1 1/2" = 1'-0"



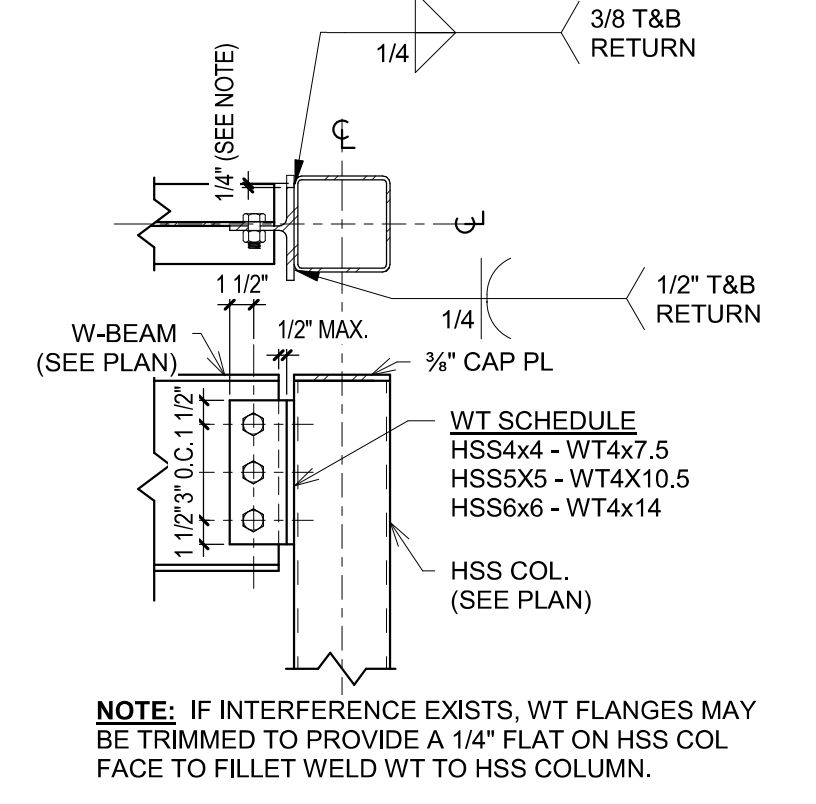
NOTES:  
1. PROVIDE GUSSET PLATE W/ THICKNESS (T) FROM TABLE:  
2. PROVIDE FILLET WELD W/ DEPTH (D) FROM TABLE:

ANGLE	X	B	T	D
L3x3x3/4	2	6	3/4"	3/16"
L3x3x3/4	3	9	1/2"	1/4"
2L3x3x3/4	2	9	1/2"	1/4"

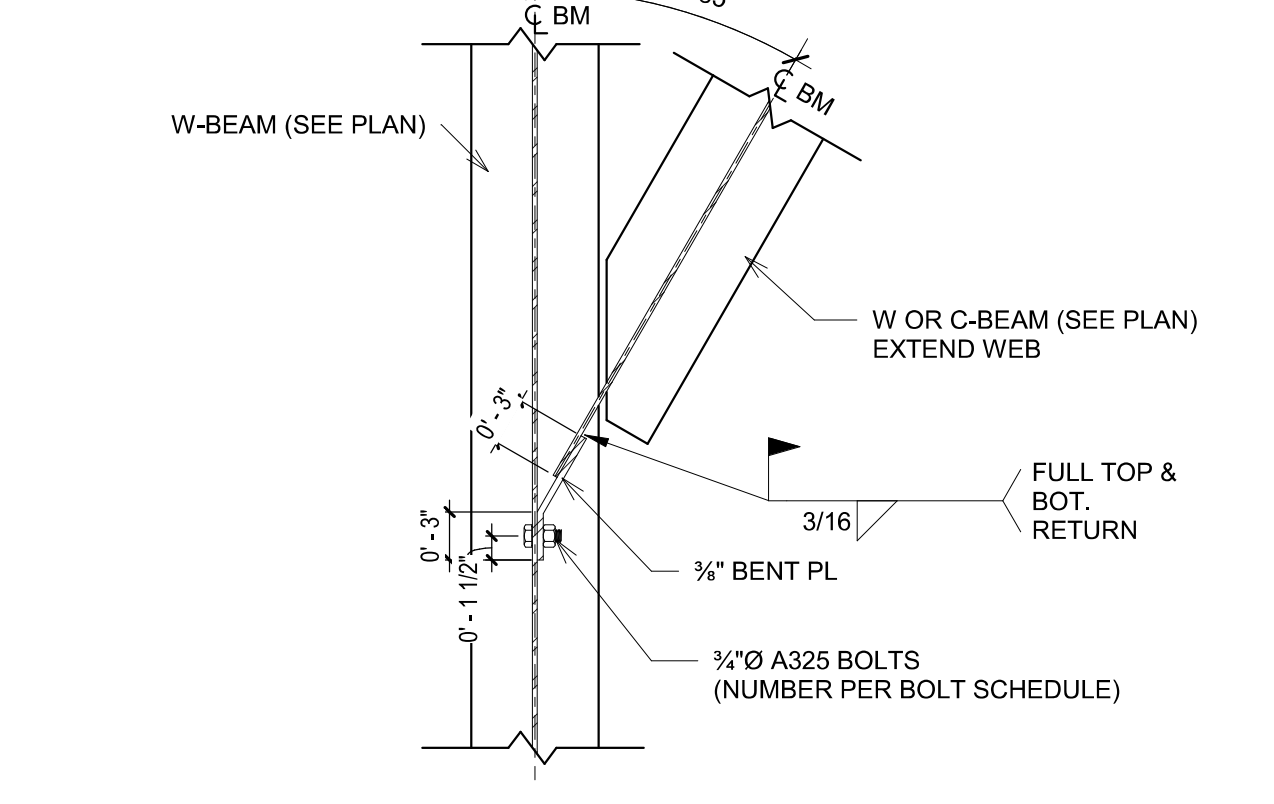


NOTES:  
1. PROVIDE GUSSET PLATE W/ THICKNESS (T) FROM TABLE:  
2. PROVIDE FILLET WELD W/ DEPTH (D) FROM TABLE:

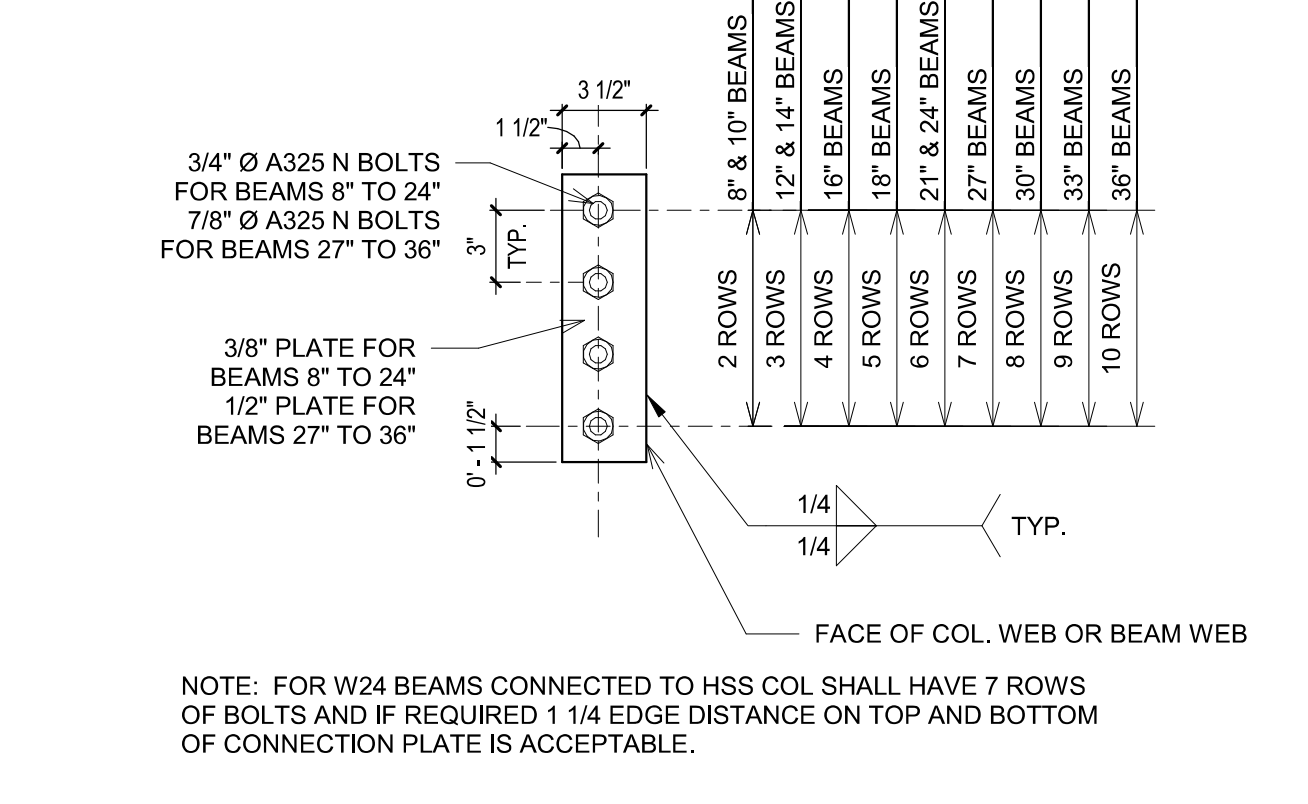
ANGLE	X	B	T	D
L3x3x1/4	2	3/4"	3/16"	12"
LL3x3x1/4	3	1/2"	1/4"	16"



8 BEAM TO HSS COLUMN CONNECTION  
1" = 1'-0"



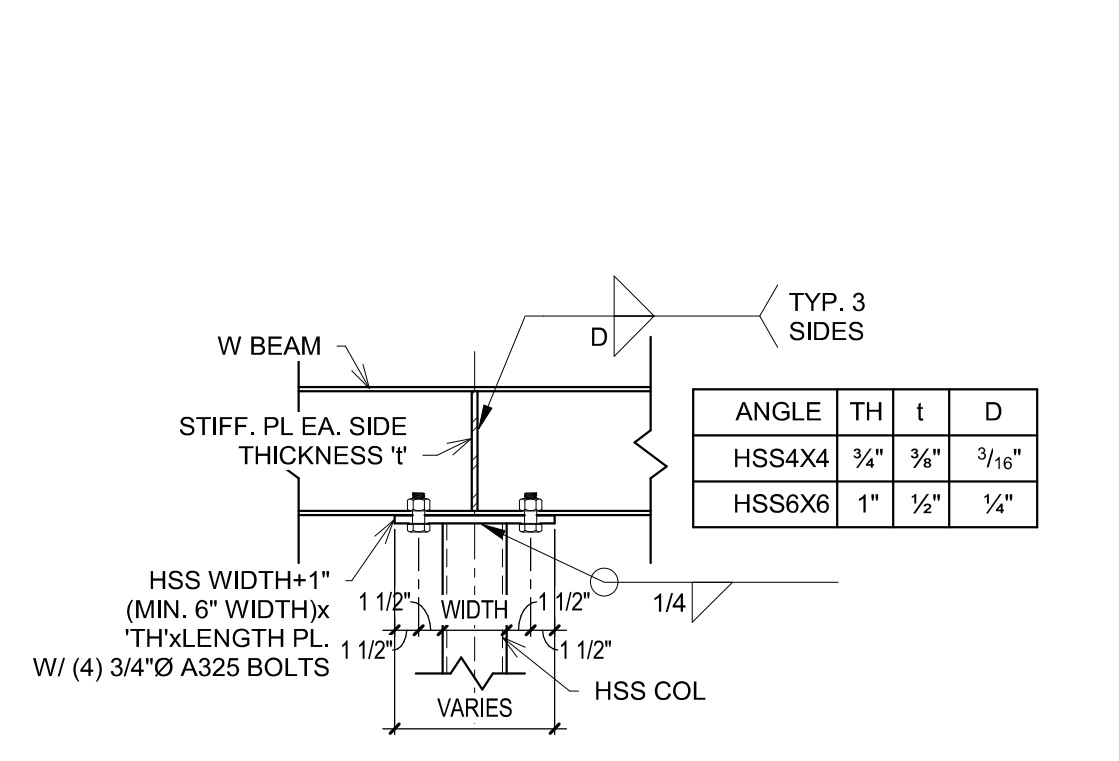
7 TYP. SKEWED BEAM TO BEAM CONNECTION  
1" = 1'-0"



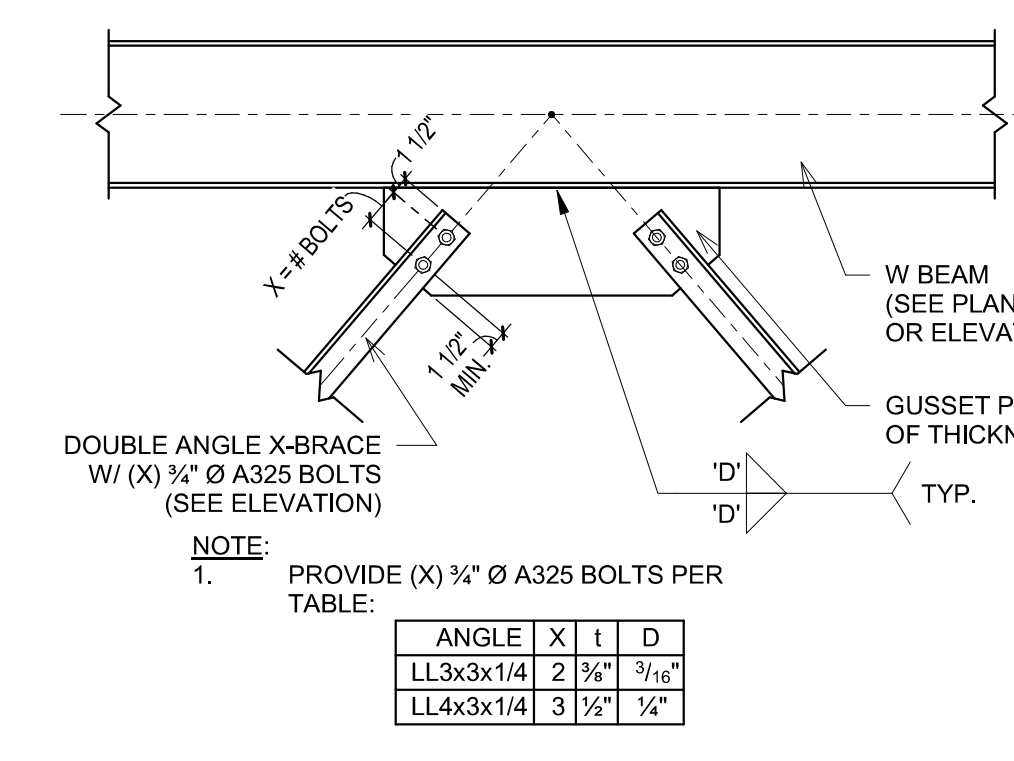
6 TYP. SHEAR TAB CONN.  
1 1/2" = 1'-0"

10 TYP. BOLTED HORT. ANGLE BRACE @ BEAM CONN.  
1" = 1'-0"

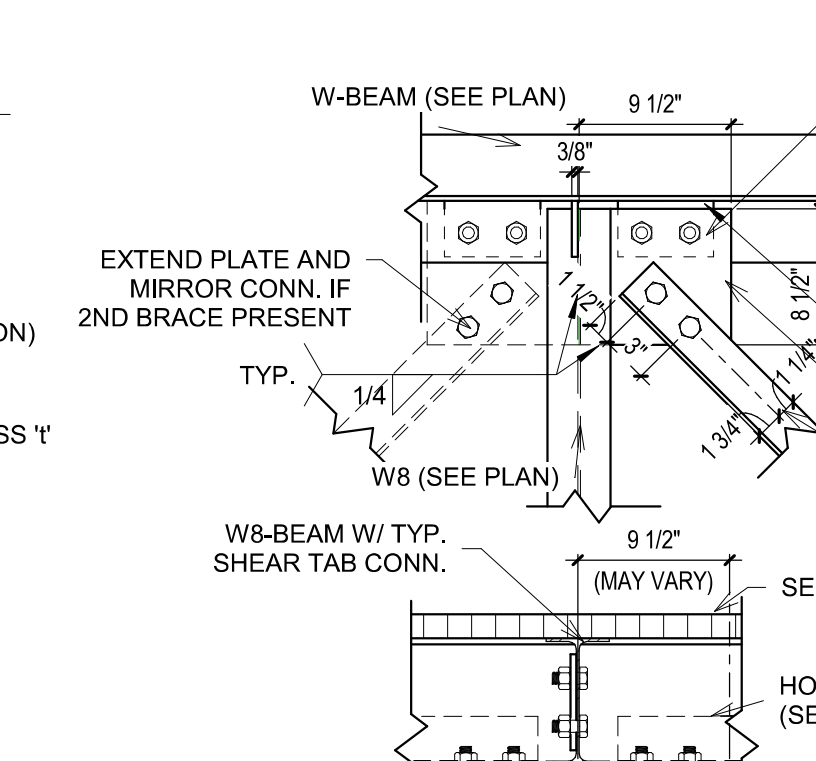
9 TYP. BOLTED ANGLE KNEE BRACE CONN.  
3/4" = 1'-0"



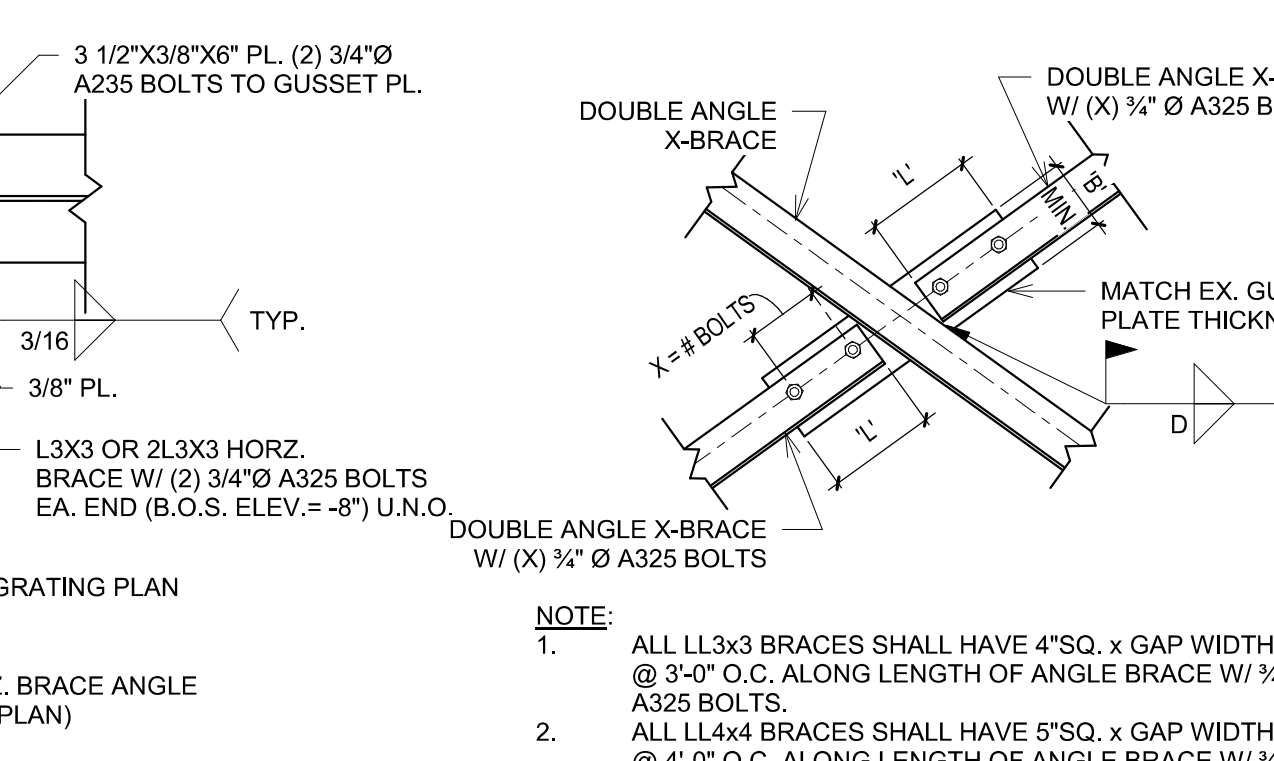
15 BEAM OVER HSS COLUMN DETAIL  
1" = 1'-0"



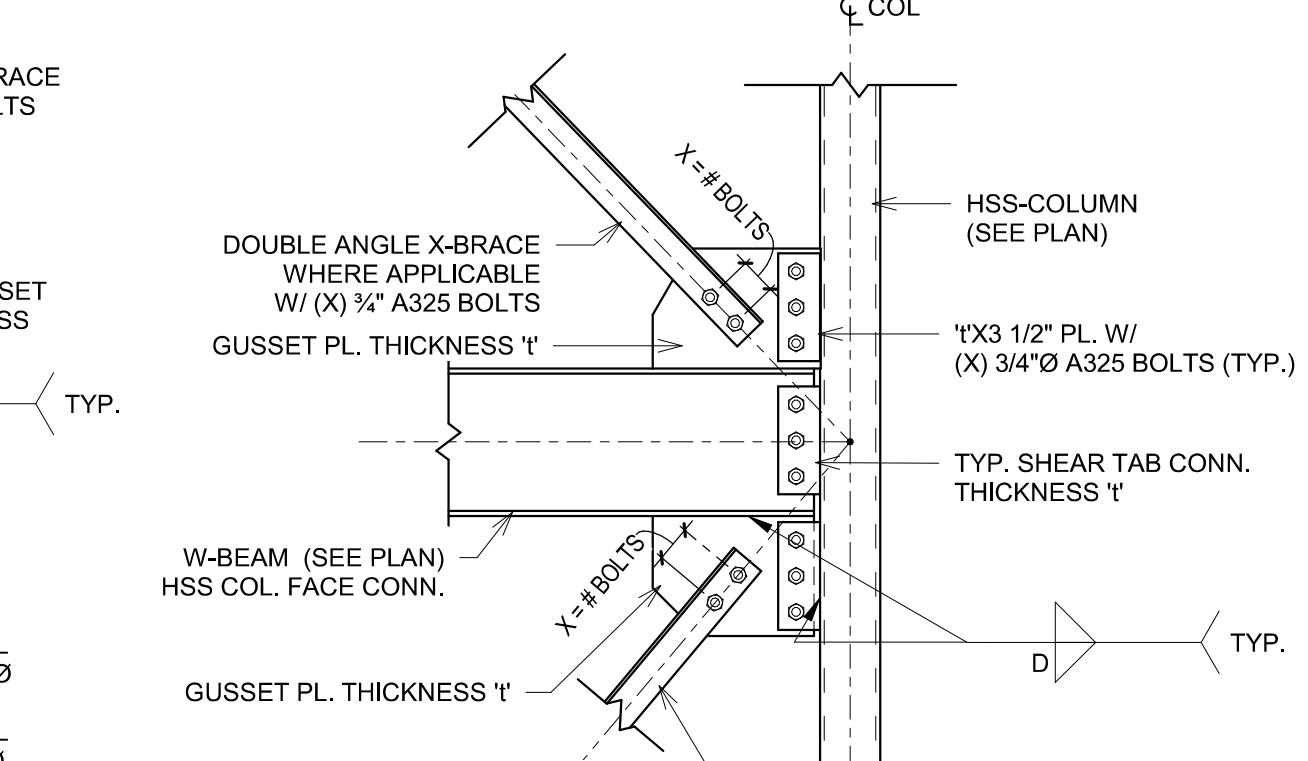
14 TYP. BOLTED ANGLE CHEVRON BRACE CONN.  
3/4" = 1'-0"



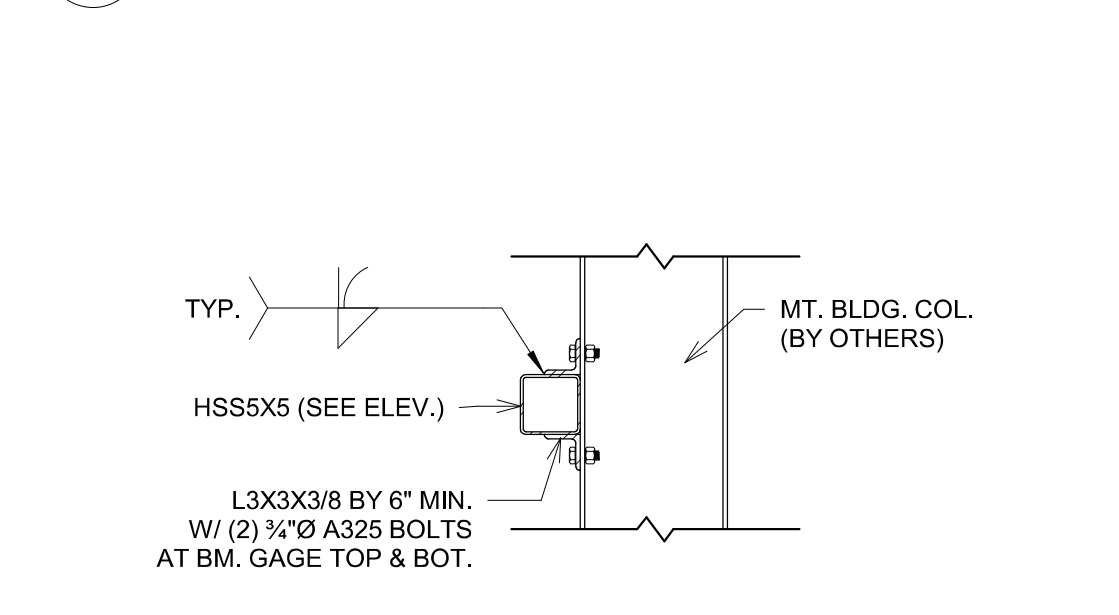
13 HORIZ. ANGLE BRACE CONN. @ W8 BEAM  
1" = 1'-0"



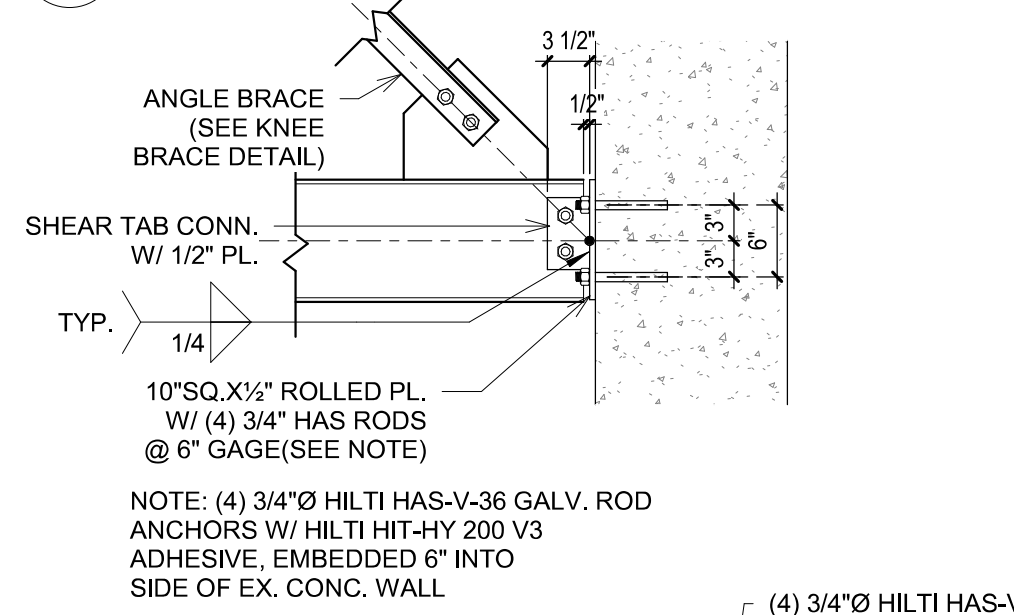
12 TYP. BOLTED X-BRACE CONN. - DBL L  
3/4" = 1'-0"



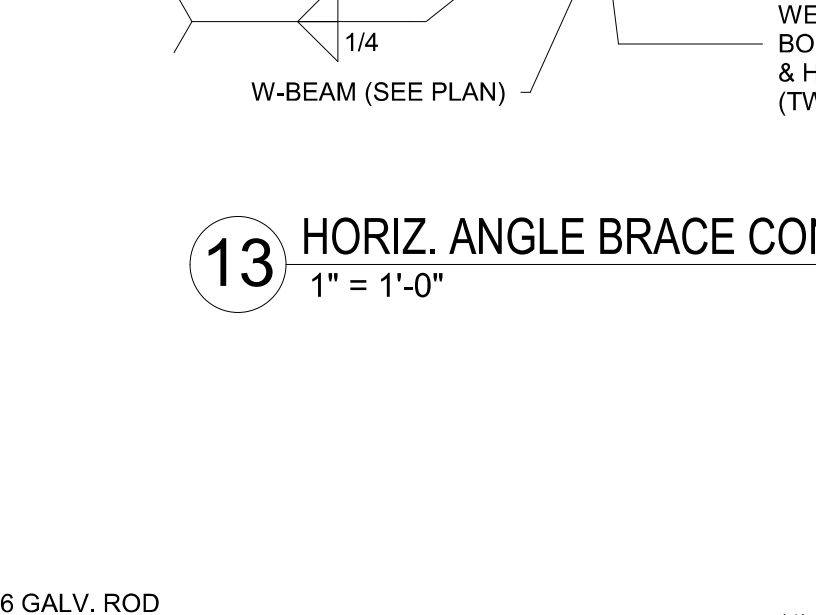
11 TYP. BOLTED ANGLE BRACE CONN. @ HSS COL.  
3/4" = 1'-0"



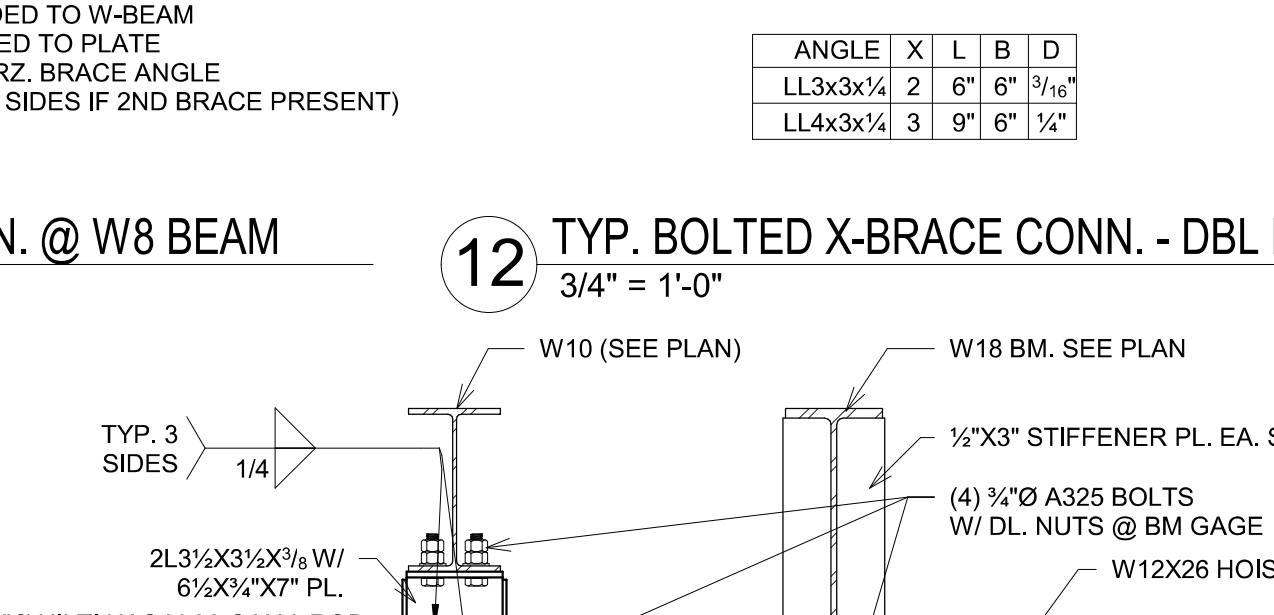
21 HSS TO MT. BLDG. COL. CONN.  
3/4" = 1'-0"



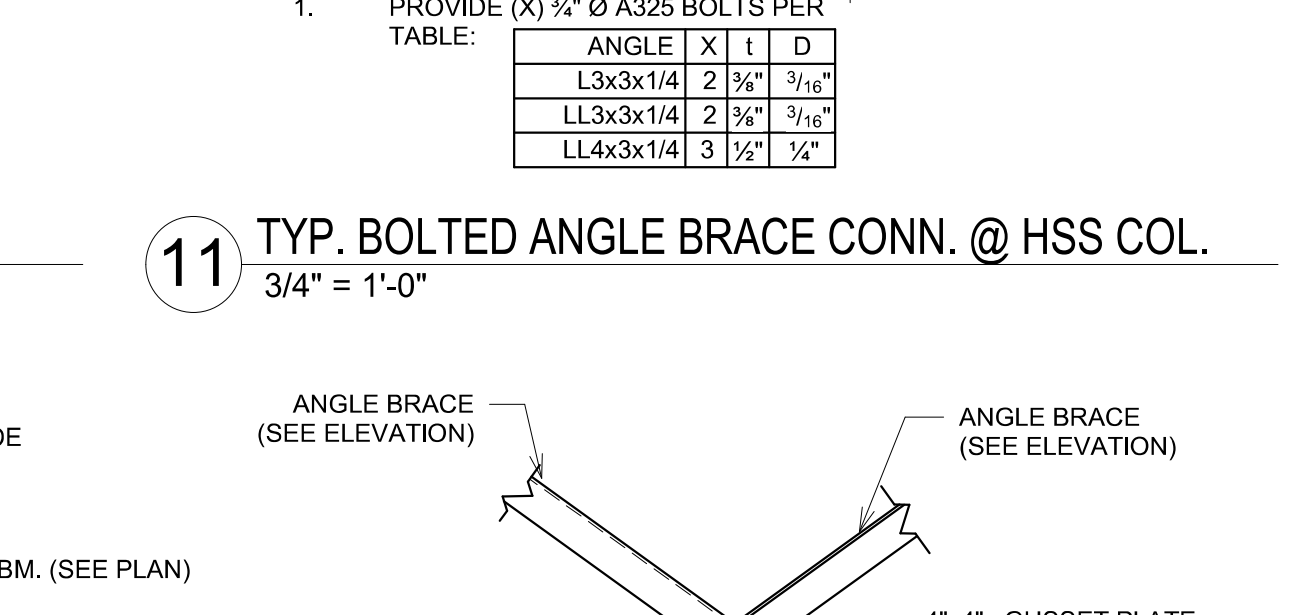
20 BEAM TO CONC. TANK CONN.  
3/4" = 1'-0"



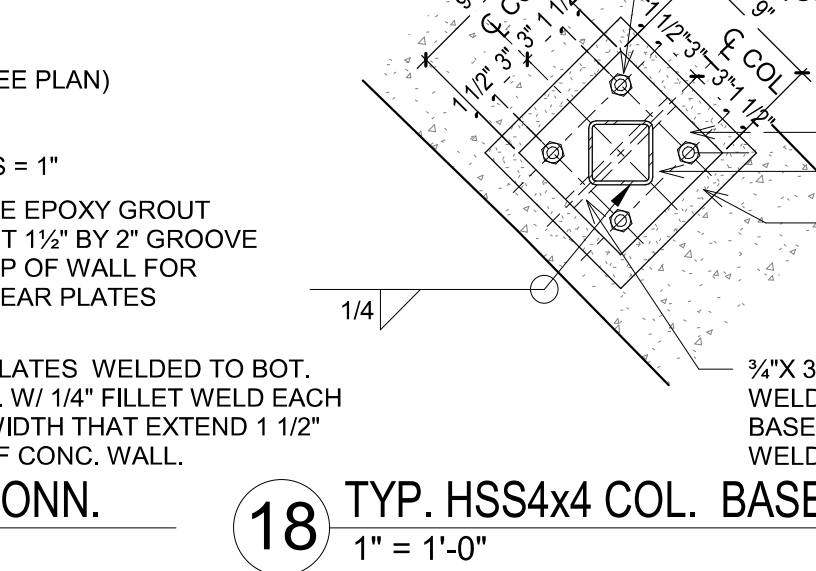
19 W21 BEAM TO CONC. WALL CONN.  
1" = 1'-0"



17 HOIST BEAM CONN. & STOP ANGLES  
1" = 1'-0"



16 TYP. ANGLE X-BRACE CONN. - SINGLE BOLTED  
3/4" = 1'-0"



18 TYP. HSS4x4 COL. BASE PL. ON CONC. WALL  
1" = 1'-0"

ONE INCH AT FULL SIZE  
IF NOT ONE INCH SCALE ACCORDINGLY

DATE	REVISION

**CS&E** STRUCTURAL ENGINEERING, INC.

ROGERS, ARKANSAS  
ROGERS POLLUTION CONTROL FACILITY (PCF)  
SOLIDS HANDLING IMPROVEMENTS, PHASE II

DRYER BUILDING  
EXTERIOR PLATFORM AND PROJECT DETAILS

ROGERS WATER UTILITIES

DATE:	AUGUST 2024
SCALE:	As indicated
DESIGNED BY:	JMR
DRAWN BY:	TPL
HWEI NO.:	2020043
FILENAME:	SA-17

SHEET NO.  
**SA-17**

Autodesk Docs/CSE23068 HW Rogers PCF Phase 2 SH Improv/406493-Solids Building-CSE.rvt 8/26/2024 10:06:06 AM TPL EXTERIOR PLATFORM AND PROJECT DETAILS