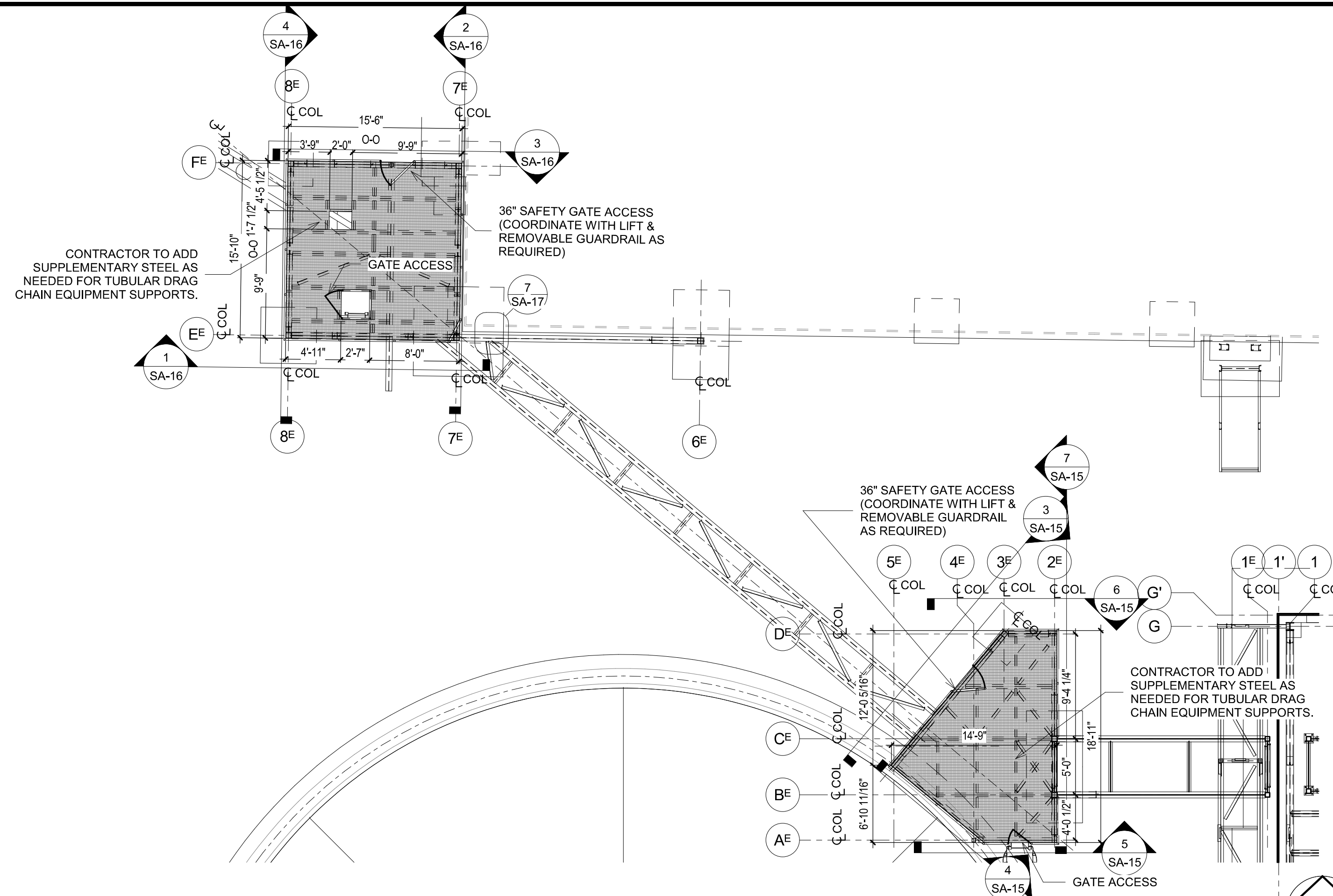
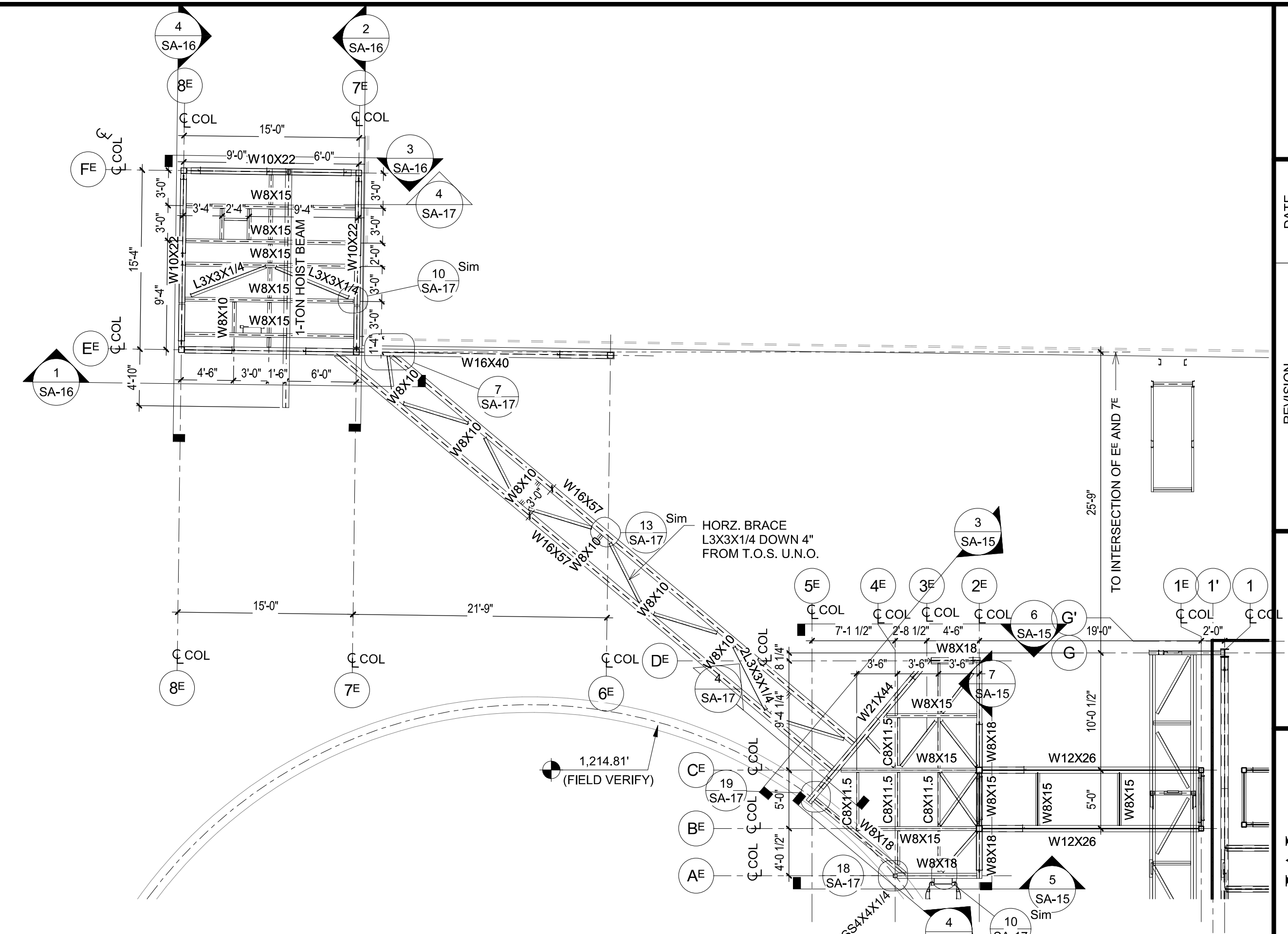


8/26/2024 10:05:59 AM / TPL/EXT. EQUIPMENT PLATFORM PLANS AND ELEVATIONS

Autodesk Docs/CSE23068 HW Rogers PCF Phase 2 SH Improv/406493-Solids Building-CSE.rvt

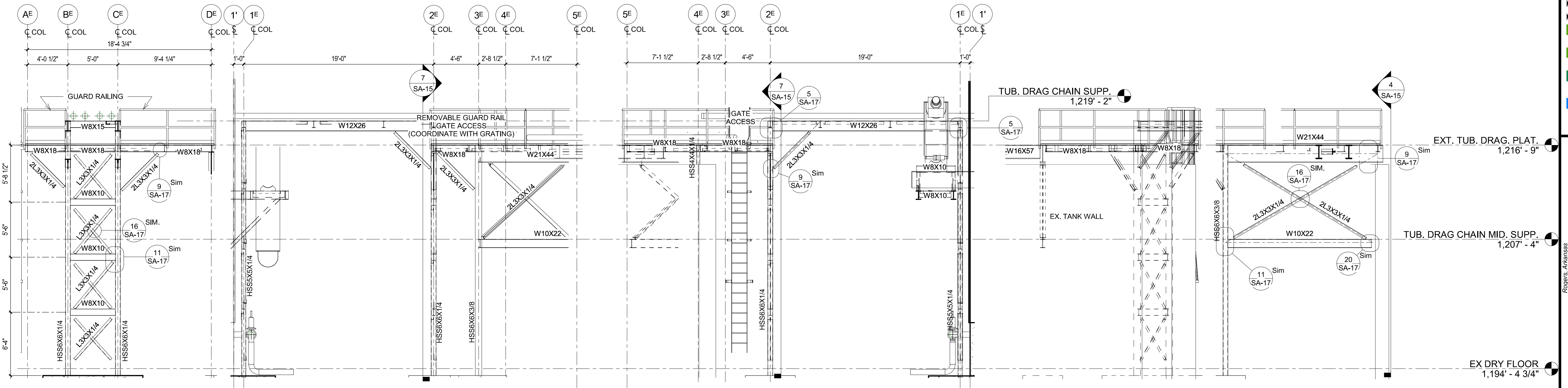


2 EXTERIOR TUB DRAG PLAT GRATING AND RAILING
1/8" = 1'-0"



1 EXTERIOR TUB DRAG PLAT FRAMING
1/8" = 1'-0"

PLAN NOTES:
1. CONTRACTOR TO COORDINATE SAFETY GATE WIDTH WITH SCISSOR LIFT SELECTED.



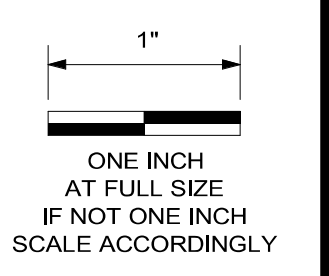
7 EXT TUB DRAG @ BRIDGE
3/16" = 1'-0"

6 EXT TUB DRAG PLAT N.ELEV
3/16" = 1'-0"

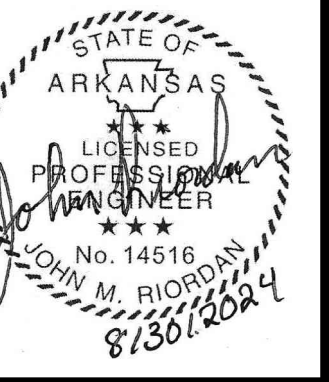
5 EXT TUB DRAG S.ELEV
3/16" = 1'-0"

4 EXT TUB DRAG SW.ELEV
3/16" = 1'-0"

3 EXT TUB DRAG NW.ELEV
3/16" = 1'-0"



DATE	REVISION



HAWKINS WEIR ENGINEERS, INC.
CSE CORNERSTONE
 STRUCTURAL ENGINEERING, INC.

ROGERS, ARKANSAS
 ROGERS POLLUTION CONTROL FACILITY (PCF)
 SOLIDS HANDLING IMPROVEMENTS, PHASE II
 DRYER BUILDING
 EXT. EQUIPMENT PLATFORM PLANS AND ELEVATIONS
 ROGERS WATER UTILITIES

DATE: AUGUST 2024
 SCALE: As indicated
 DESIGNED BY: JMR
 DRAWN BY: TPL
 HWEI NO.: 2020043
 FILENAME: SA-15

SHEET NO.
SA-15