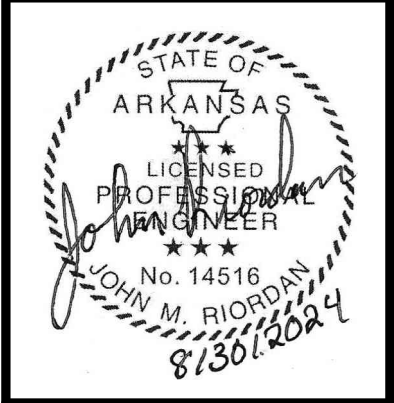


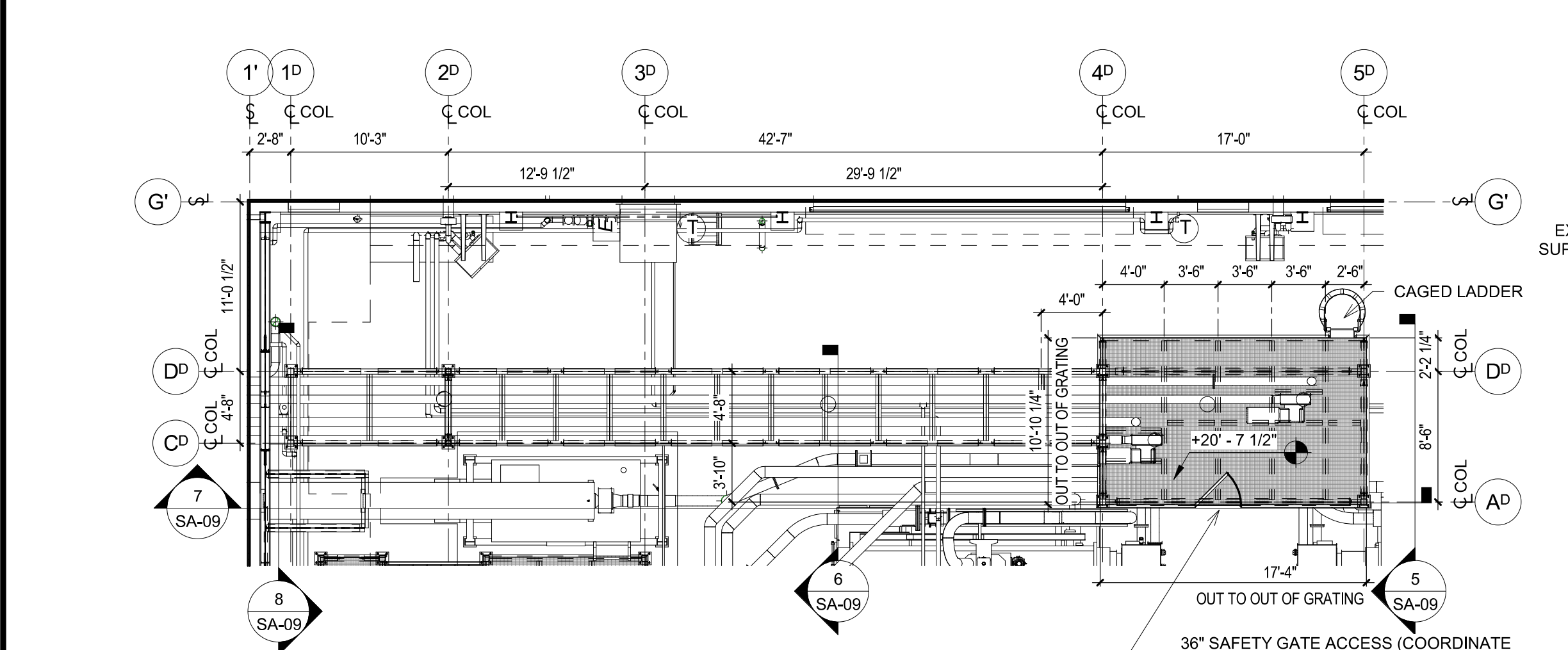
DATE
REVISION



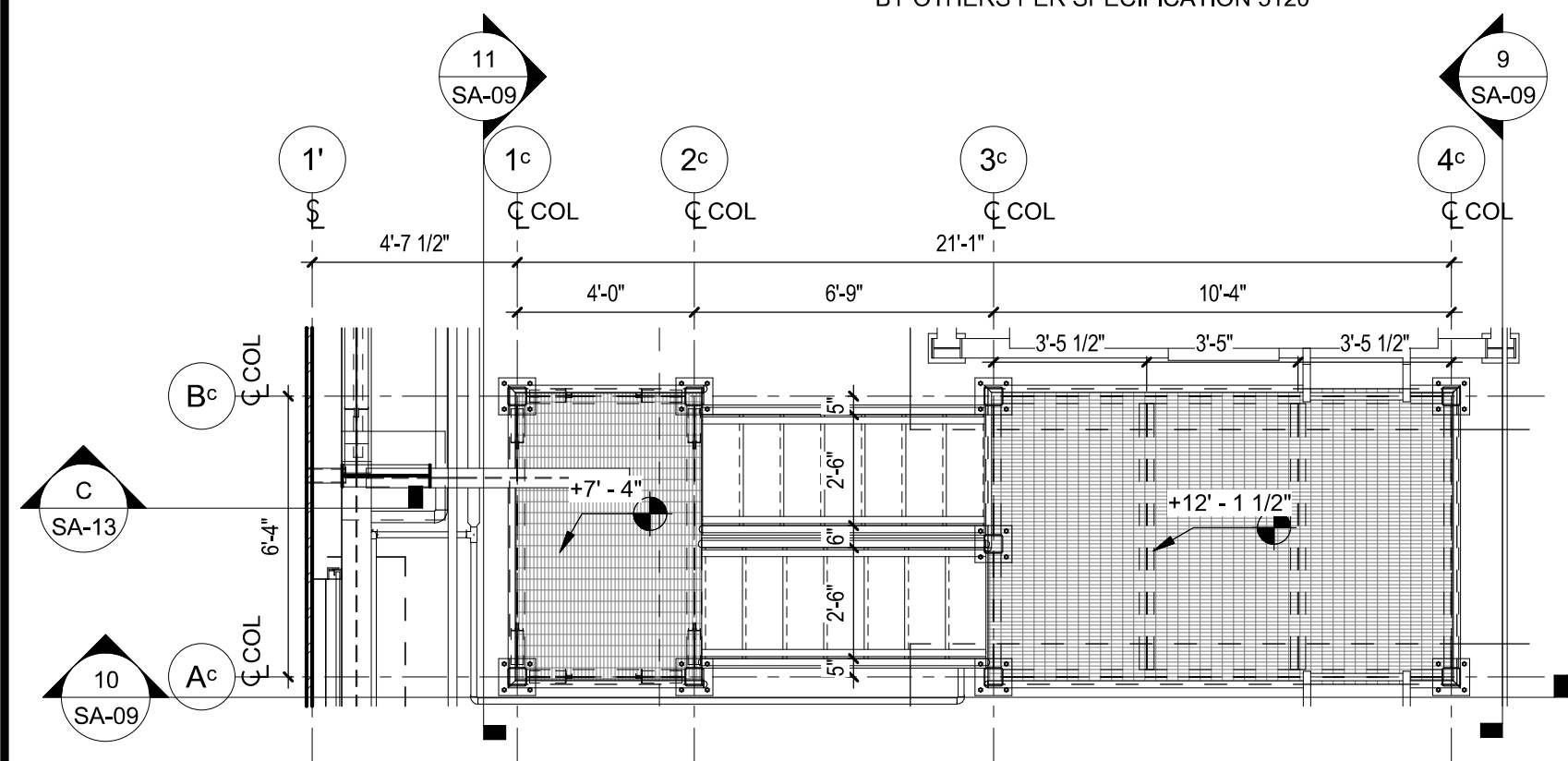
HAWKINS WEIR ENGINEERS, INC.
CSE CORNERSTONE
 STRUCTURAL ENGINEERING, INC.

ROGERS, ARKANSAS
 ROGERS POLLUTION CONTROL FACILITY (PCF)
 SOLIDS HANDLING IMPROVEMENTS, PHASE II
 BUILDING BUILDING
 DRYER BUILDING
 EQUIPMENT SUPPORT AND STEEL
 PLATFORM PLANS
 ROGERS WATER UTILITIES

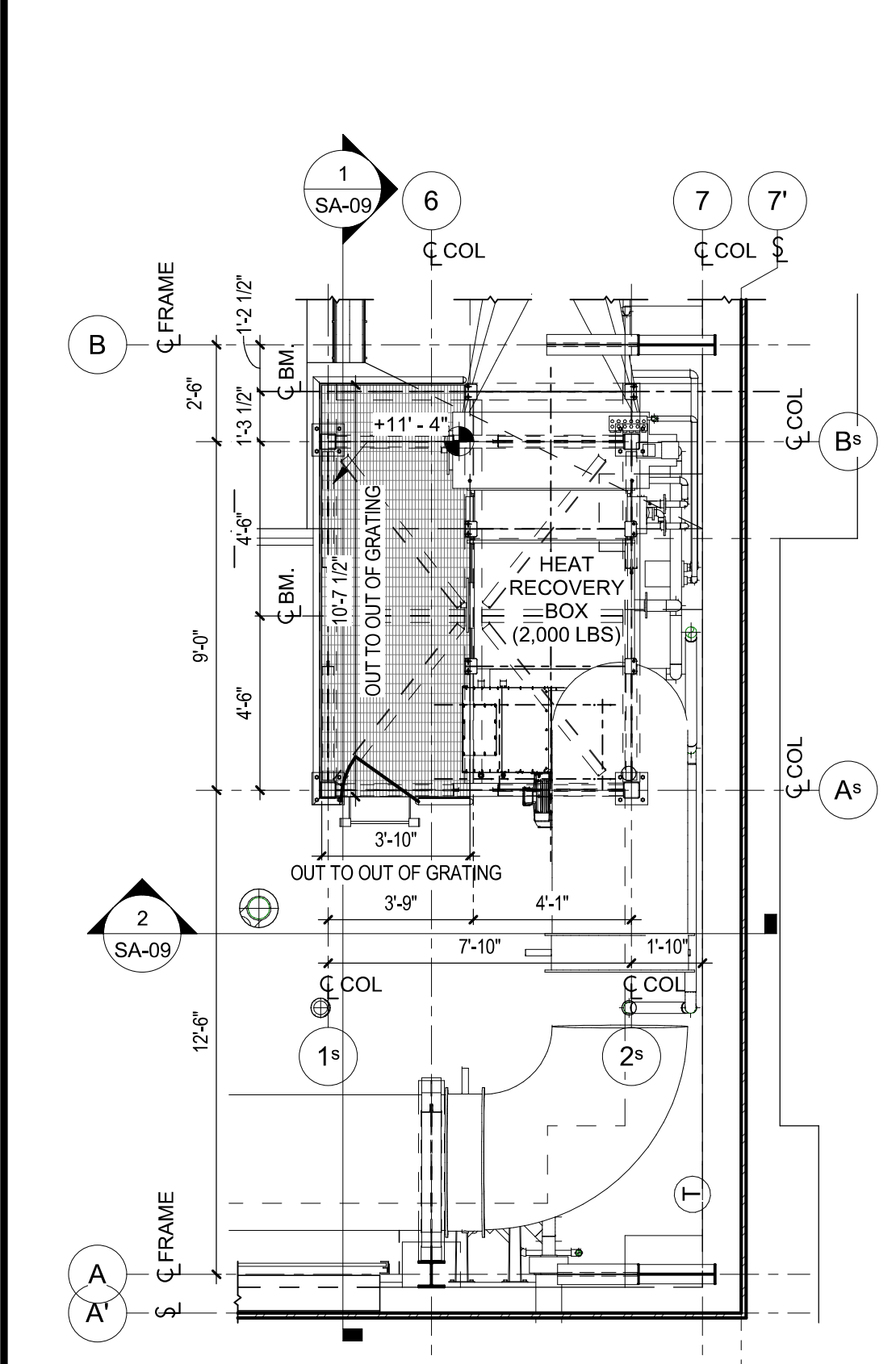
DATE:	AUGUST 2024
SCALE:	As indicated
DESIGNED BY:	JMR
DRAWN BY:	TPL
HWEI NO.:	2020043
FILENAME:	SA-08
SHEET NO.	SA-08



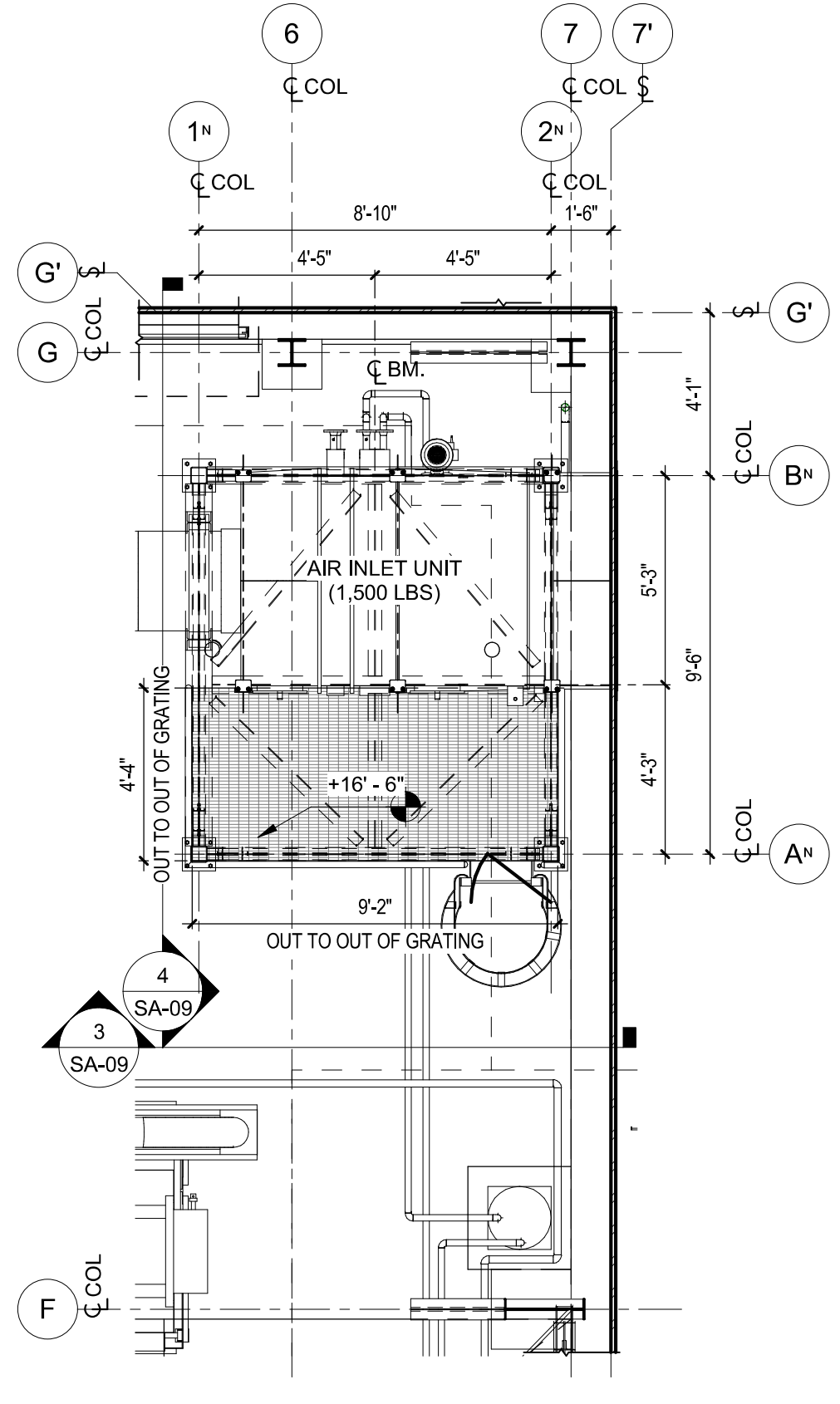
2 TUBULAR DRAG CHAIN SUPPORT PLATFORM PLAN
 1/8" = 1'-0"
 EQUIPMENT PLATFORM LAYOUT DESIGNED BY OTHERS PER SPECIFICATION 5120



3 CAKE HOPPER INSPECTION PLATFORM PLAN
 1/4" = 1'-0"
 EQUIPMENT PLATFORM LAYOUT DESIGNED BY OTHERS PER SPECIFICATION 5120

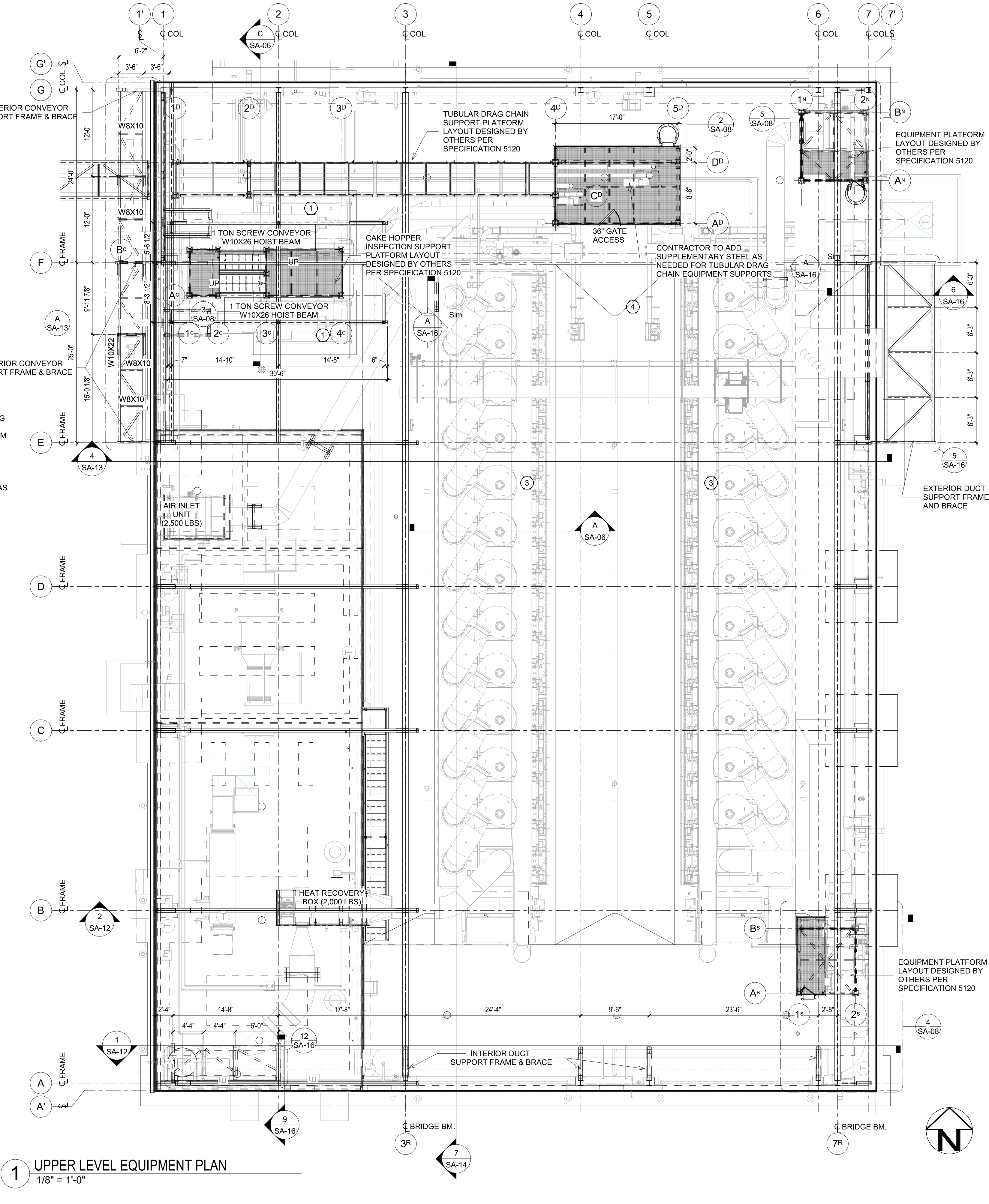


4 SOUTH EQUIPMENT PLATFORM PLAN
 1/4" = 1'-0"
 EQUIPMENT PLATFORM LAYOUT DESIGNED BY OTHERS PER SPECIFICATION 5120



5 NORTH EQUIPMENT PLATFORM PLAN
 1/4" = 1'-0"
 EQUIPMENT PLATFORM LAYOUT DESIGNED BY OTHERS PER SPECIFICATION 5120

- PLATFORM NOTES:**
- ELEVATIONS SHOWN ON PLANS IS TOP OF GRATING ELEVATIONS, HEIGHT ABOVE FINISH FLOOR.
 - PLATFORM ALUMINUM GRATING SHALL BE MINIMUM 3/16" BEARING BARS WITH 1 1/2" THICKNESS (SEE SPECIFICATION 05500).
 - ALL LADDER OR LIFT ACCESS LOCATIONS SHALL HAVE SAFETY GATES.
 - CONTRACTOR TO COORDINATE LIFT WIDTH AND ACCESS LOCATIONS WITH LIFT CHOSEN AS WELL AS LOCATION WHERE REMOVABLE GUARDRAILS ARE REQUIRED.
 - LADDER RAILS SHALL BE CAPABLE OF SPANNING REQUIRED HEIGHTS WHEN NO INTERMEDIATE BRACING LOCATIONS ARE PRESENT.



1 UPPER LEVEL EQUIPMENT PLAN
 1/8" = 1'-0"

