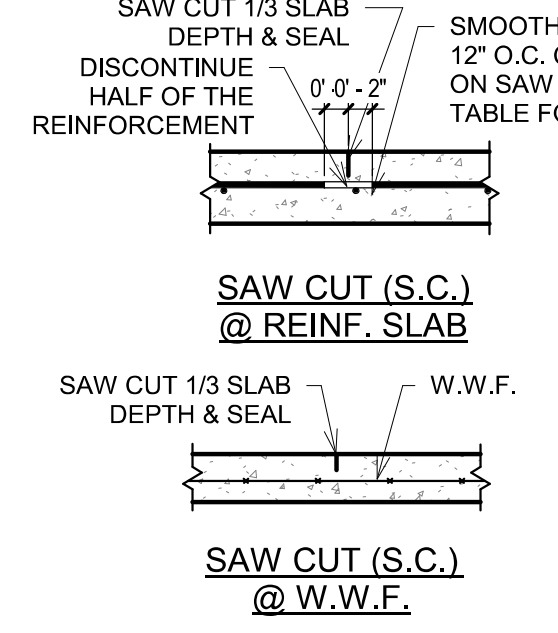
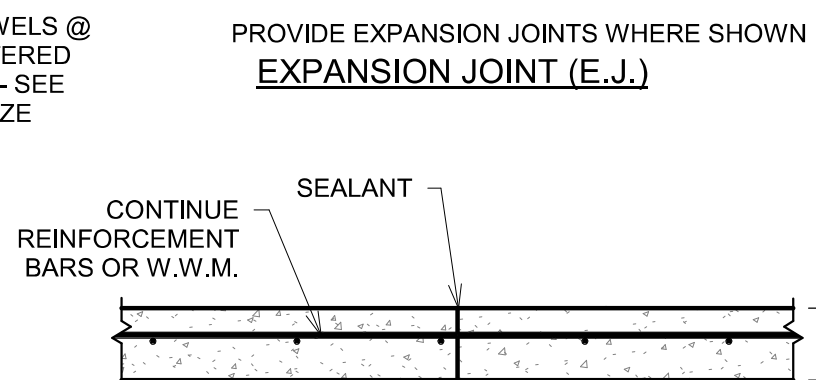
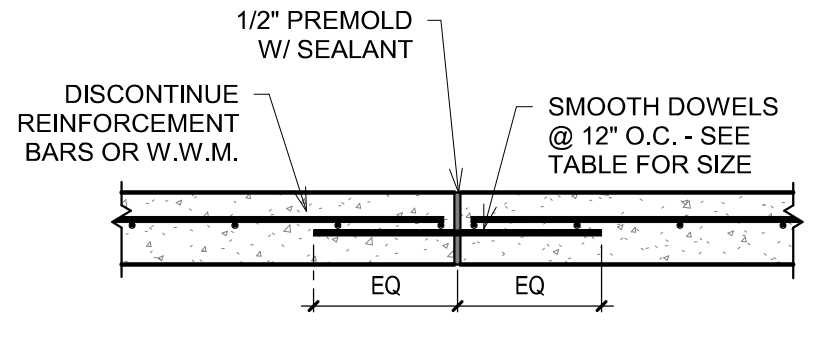


SLAB THICK.	DOWEL DIA.	DOWEL LENGTH
4"	1/2"	16"
5"	5/8"	16"
6"	3/4"	16"
7"	1"	18"
8"	1"	18"

*LUBRICATE ONE SIDE

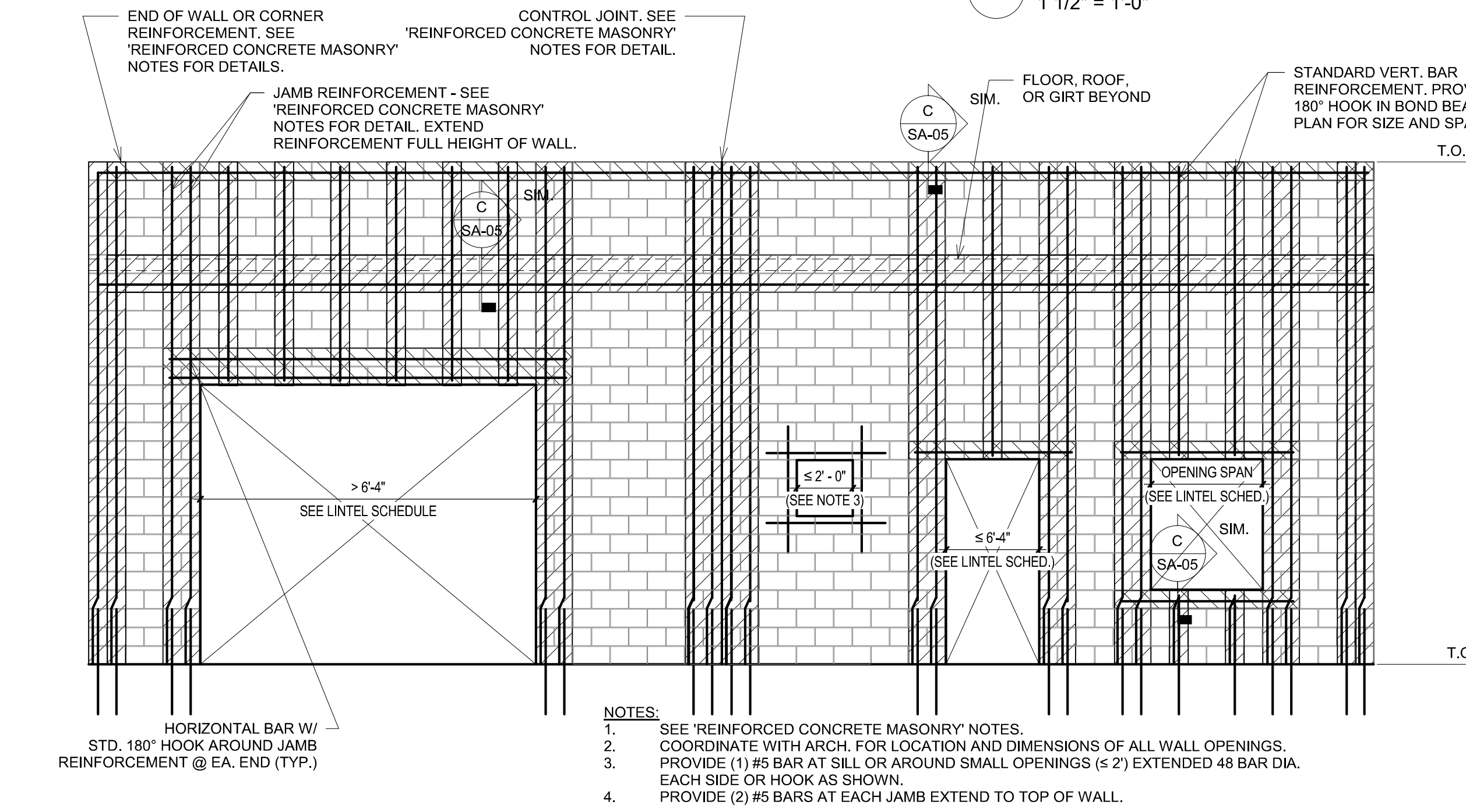


- PLAN NOTES:**
- FINISH EXISTING FLOOR ELEVATION IS AN THE ASSUMED ELEVATION OF 100'-0" WHICH CORRESPONDS TO THE ELEVATION OF 1195.00' U.N.O TOP OF PEDESTAL TO BE 48" ABOVE FINISHED FLOOR AT AN ASSUMED FINISHED ELEV.=104.0' WHICH CORRESPONDS TO THE ELEV.=1199.0' U.N.O.
 - COLUMN BASE PLATE SHALL HAVE 1-1/2" NON-SHRINK GROUT BELOW U.N.O. THE BOTTOM OF STEEL COLUMN BASE PLATES SHALL BE AT THE ASSUMED ELEV.=104'-1 1/2" WHICH CORRESPONDS TO THE ELEV.=1199.125' U.N.O
 - TYP. SLAB SHALL BE 8" CONCRETE SLAB W/ #5 @ 12" O.C. EA. WAY PLACED ON CHAIRS @ 3'-0" O.C. SPACING OVER 15 MIL VAPOR BARRIER, ON 4" CLASS 7 BASE OVER 4" MIN CLEAN ROCK DRAINAGE FILL ON PREPARED SUB GRADE PER SOILS REPORT REQUIREMENTS
 - SLAB IN OFFICE, ELECTRICAL ROOM AND BOILER ROOM SHALL BE 6" CONCRETE SLAB W/ #4 @ 12" O.C. EA. WAY, WITH SAME REQUIREMENTS AS 8" TYP. SLAB.
 - TRENCH DRAINS SHALL BE POLY DRAIN PDX (POLYMER CONCRETE) BY ABT INC. W/ STAINLESS STEEL RAILS AND ADA COMPLIANT LOAD CLASS E TRENCH DRAIN COVERS W/ MINIMUM 6" DEPTH WITH 2% SLOPES TO CENTER DRAIN.
 - CONTRACTOR TO SUBMIT A FLOOR JOINTING PLAN FOR APPROVAL.

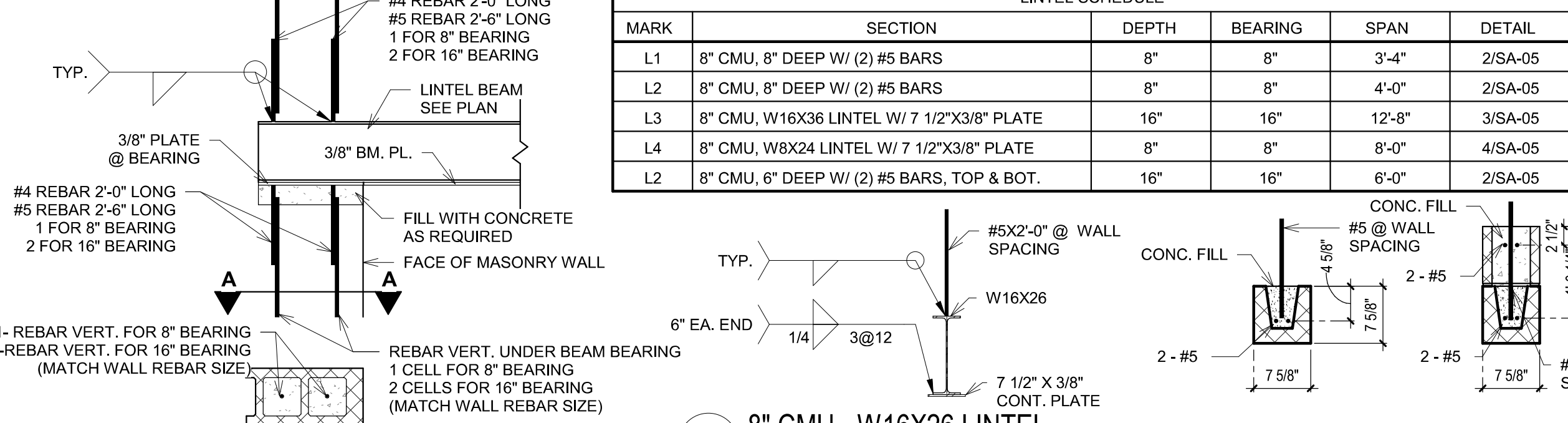
- KEYED NOTES:**
- DEWATERED CAKE HOPPER
 - BOILERS
 - HUBER BELT DRYER
 - 3 TON UNDERHUNG 60FT SPAN BRIDGE CRANE
- LX - LINTEL NUMBER (SEE LINTEL SCHEDULE)
TYP. 8" CMU WALL REINFORCING - #5 @ 24" O.C. (U.N.O.)



A SLAB JOINT DETAILS
3/4" = 1'-0"



B TYP. CMU WALL REINFORCING CONDITIONS
1/4" = 1'-0"

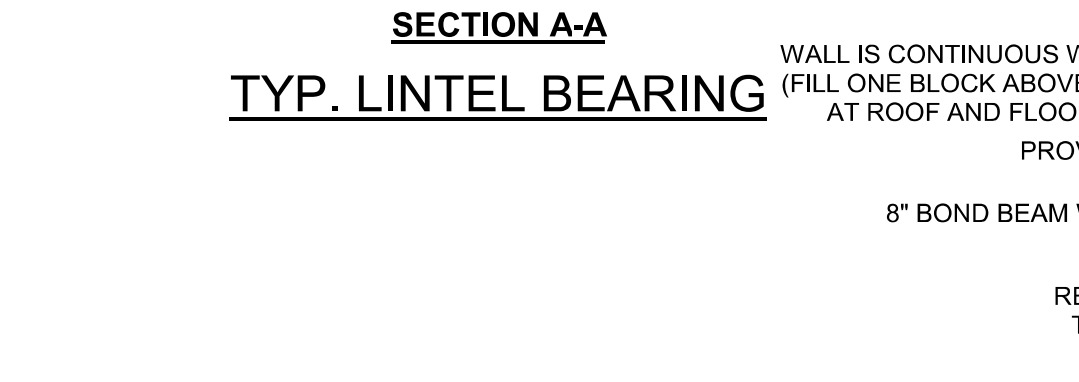


LINTEL SCHEDULE

MARK	SECTION	DEPTH	BEARING	SPAN	DETAIL
L1	8" CMU, 8" DEEP W/ (2) #5 BARS	8"	8"	3'-4"	2/SA-05
L2	8" CMU, 8" DEEP W/ (2) #5 BARS	8"	8"	4'-0"	2/SA-05
L3	8" CMU, W16X36 LINTEL W/ 7 1/2"X3/8" PLATE	16"	16"	12'-8"	3/SA-05
L4	8" CMU, W8X24 LINTEL W/ 7 1/2"X3/8" PLATE	8"	8"	8'-0"	4/SA-05
L2	8" CMU, 6" DEEP W/ (2) #5 BARS, TOP & BOT.	16"	16"	6'-0"	2/SA-05

3 8" CMU - W16X26 LINTEL
1/2" = 1'-0"

2 8" CMU - 8" & 16" DEEP LINTEL
3/4" = 1'-0"



C TYP. CMU BOND BM DETAIL
3/4" = 1'-0"

4 8" CMU - W8X18 LINTEL
1/2" = 1'-0"

1 BUILDING COLUMN AND SLAB PLAN
1/8" = 1'-0"

DATE: _____

REVISION: _____

DATE: _____

REVISION: _____

HAWKINS WEIR ENGINEERS, INC.

CSE CORNERSTONE

STRUCTURAL ENGINEERING, INC.

ROGERS, ARKANSAS

ROGERS POLLUTION CONTROL FACILITY (PCF)
SOLIDS HANDLING IMPROVEMENTS, PHASE II

DRYER BUILDING

BUILDING COLUMN LINTEL AND SLAB PLAN

ROGERS WATER UTILITIES

DATE: AUGUST 2024

SCALE: As indicated

DESIGNED BY: JMR

DRAWN BY: TPL

HWEI NO.: 2020043

FILENAME: SA-05

SHEET NO. SA-05