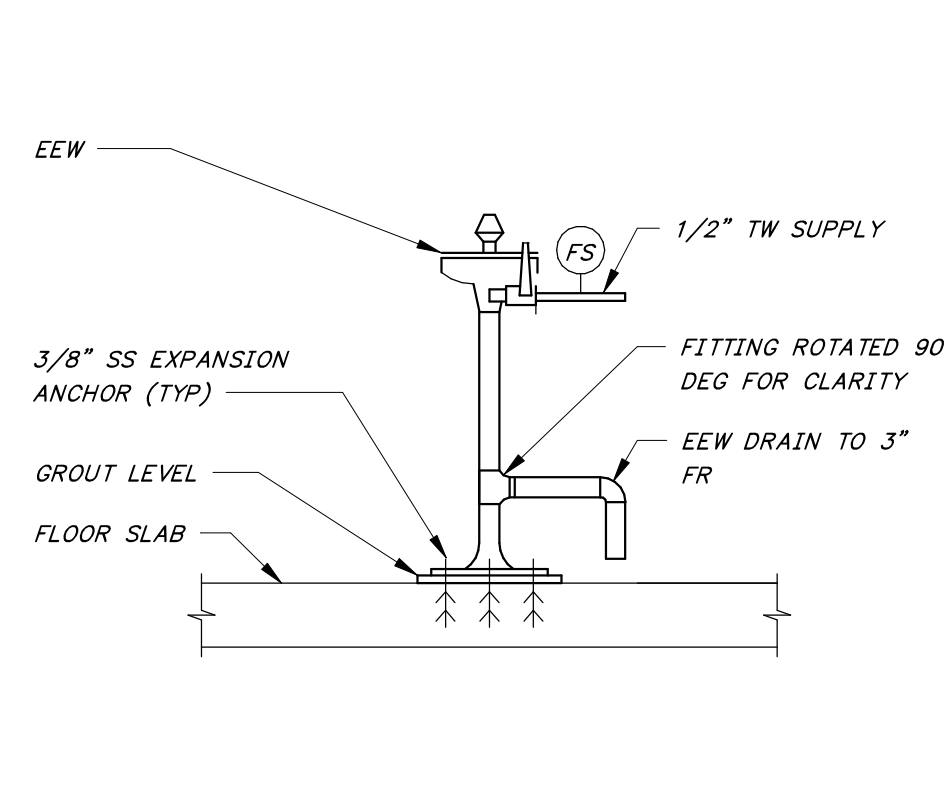
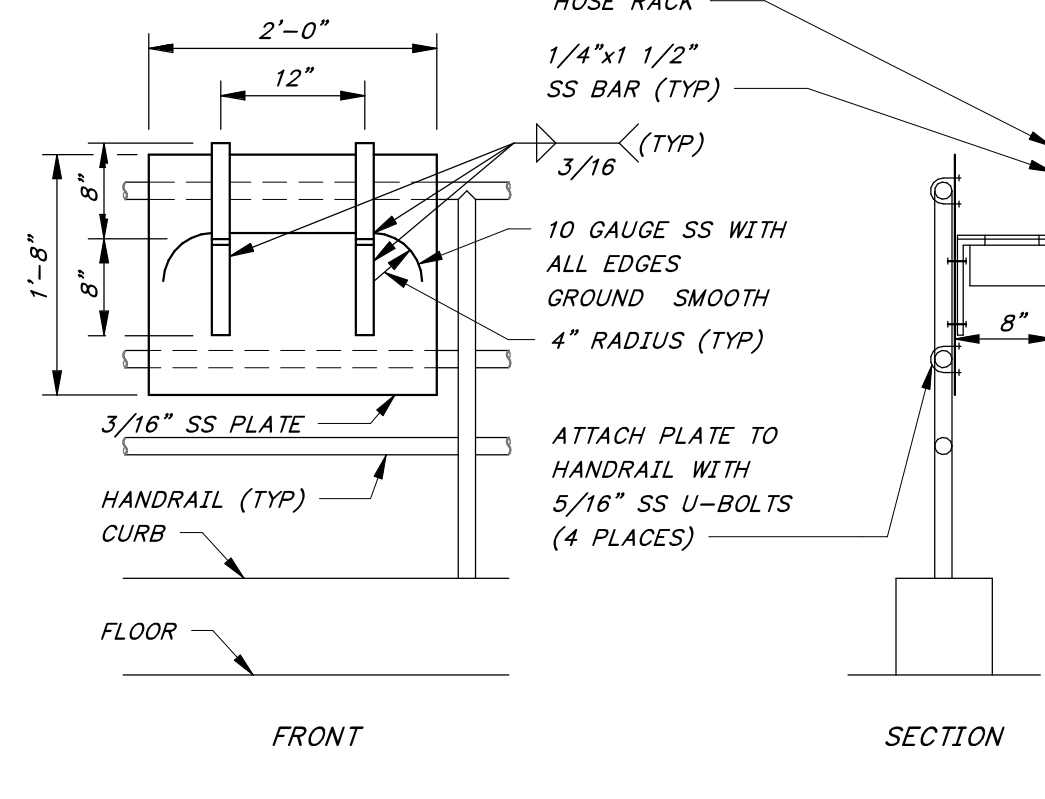


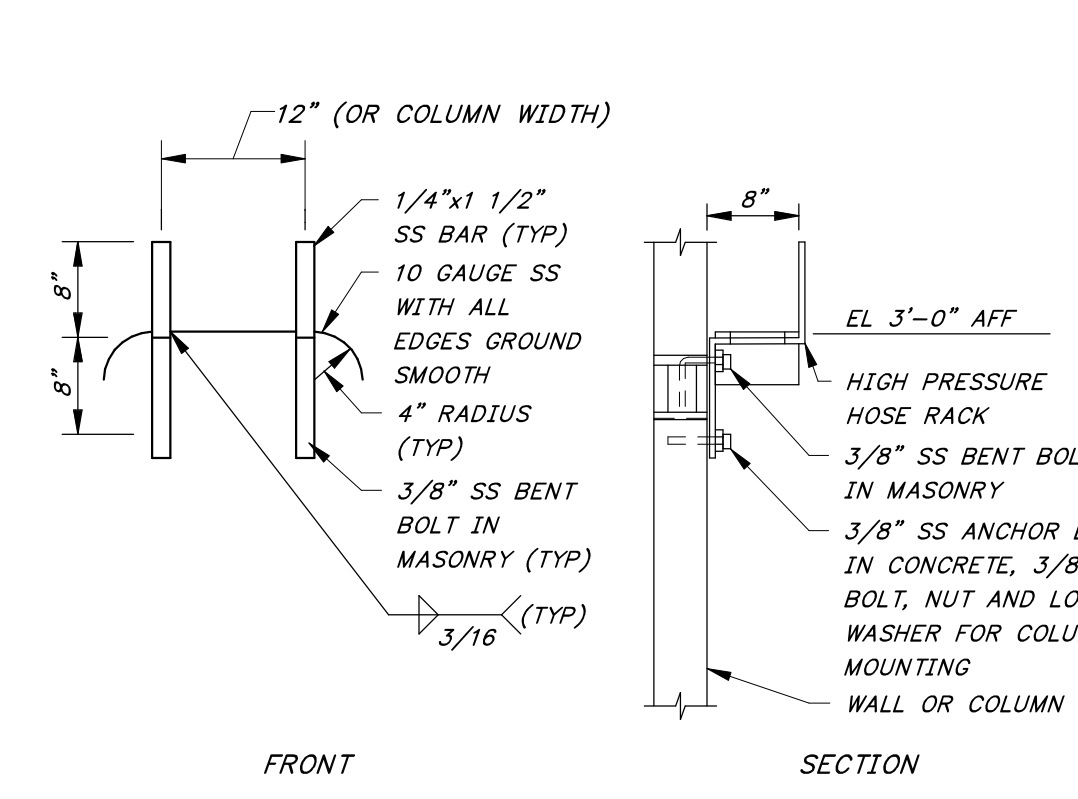
**A BACKFLOW PREVENTER**  
NO SCALE



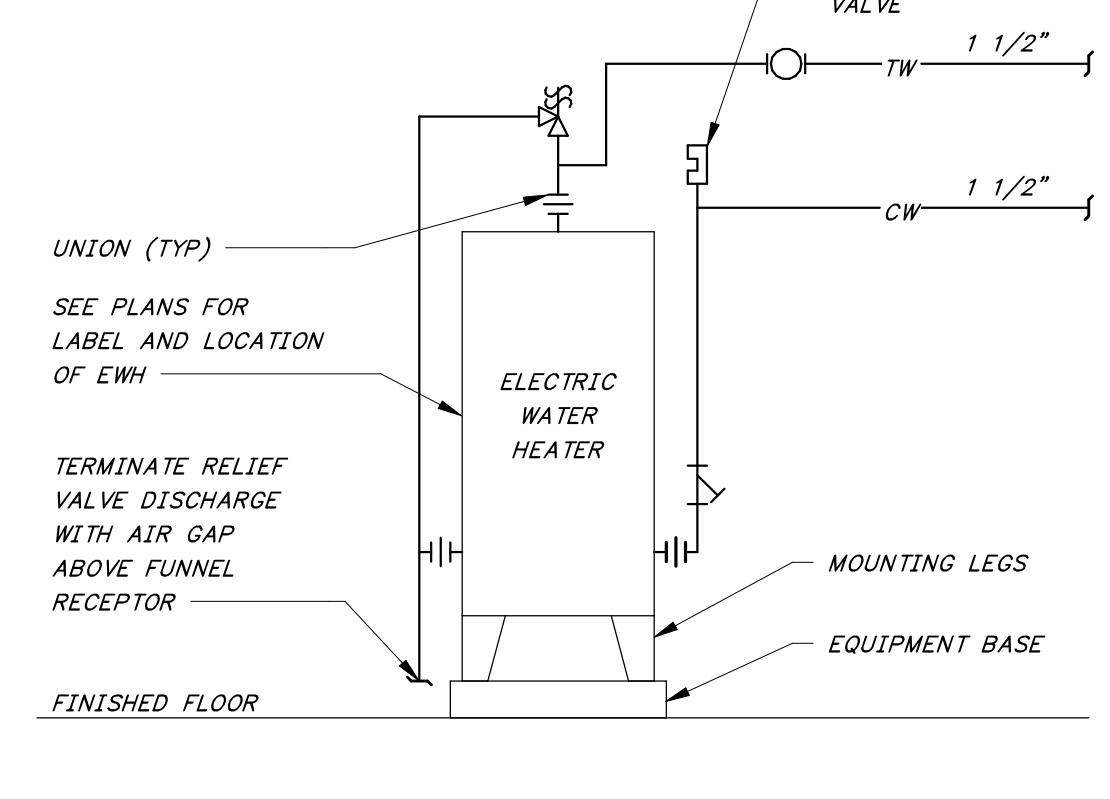
**B EMERGENCY EYE WASH DETAIL**  
NO SCALE



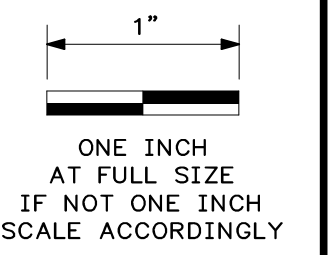
**C RAILING MOUNTED HOSE RACK**  
NO SCALE



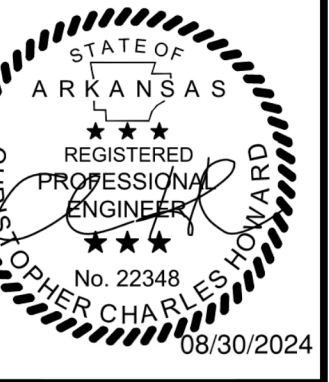
**D WALL OR COLUMN MOUNTED HOSE RACK**  
NO SCALE



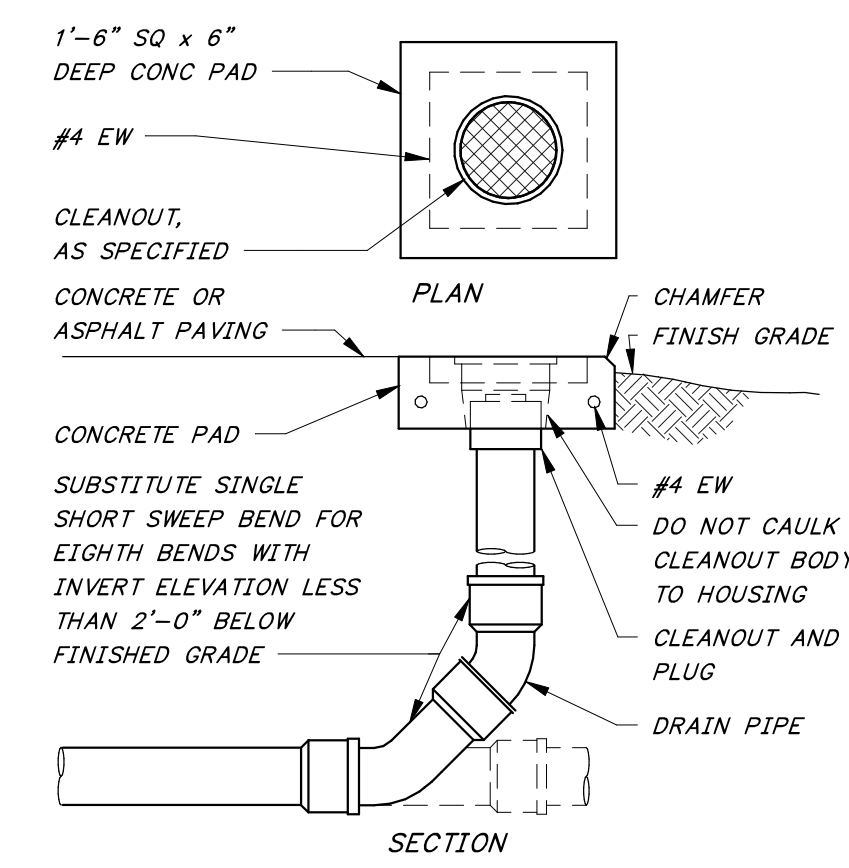
**E WATER HEATER - EMERGENCY FIXTURE**  
NO SCALE



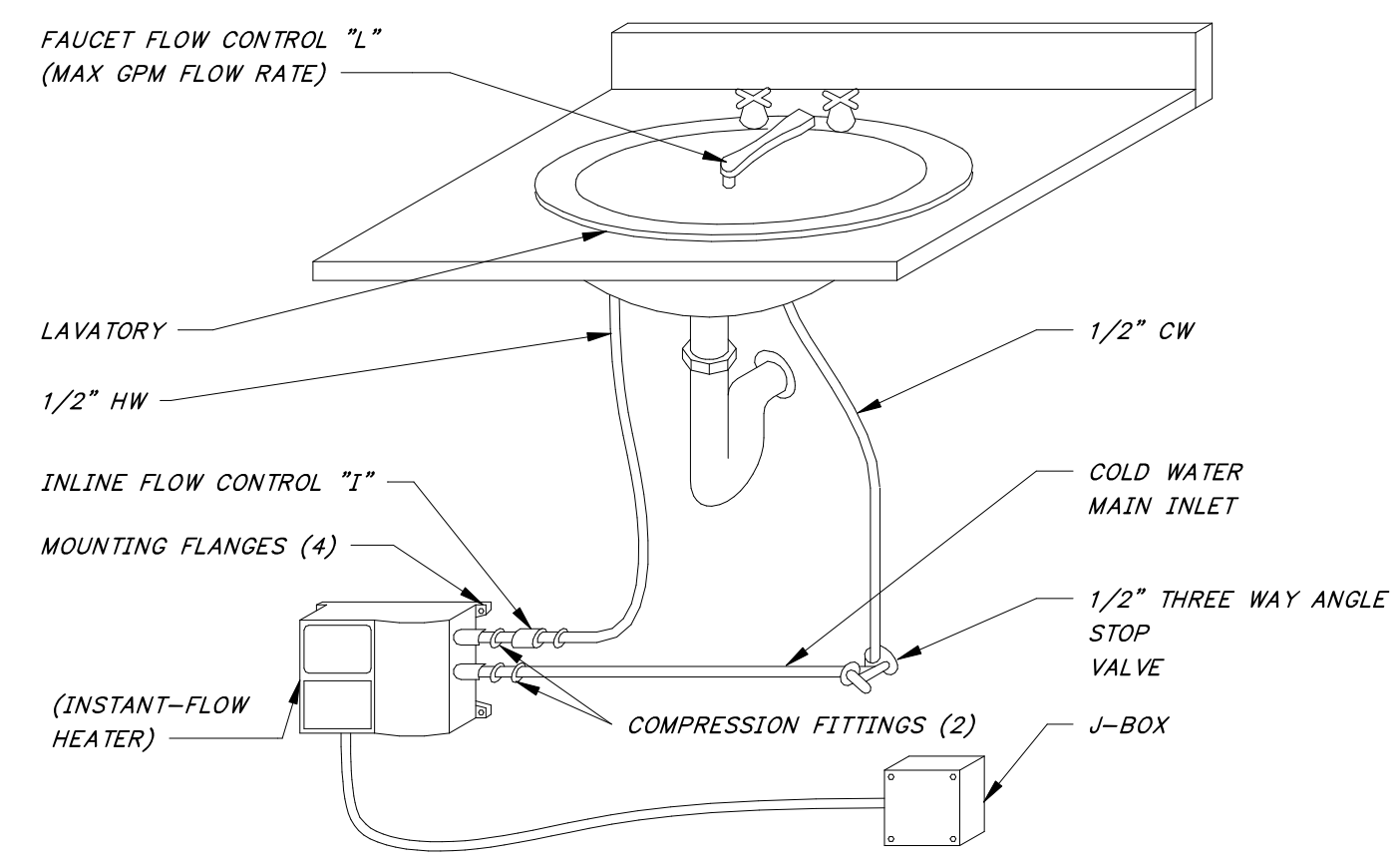
DATE	REVISION



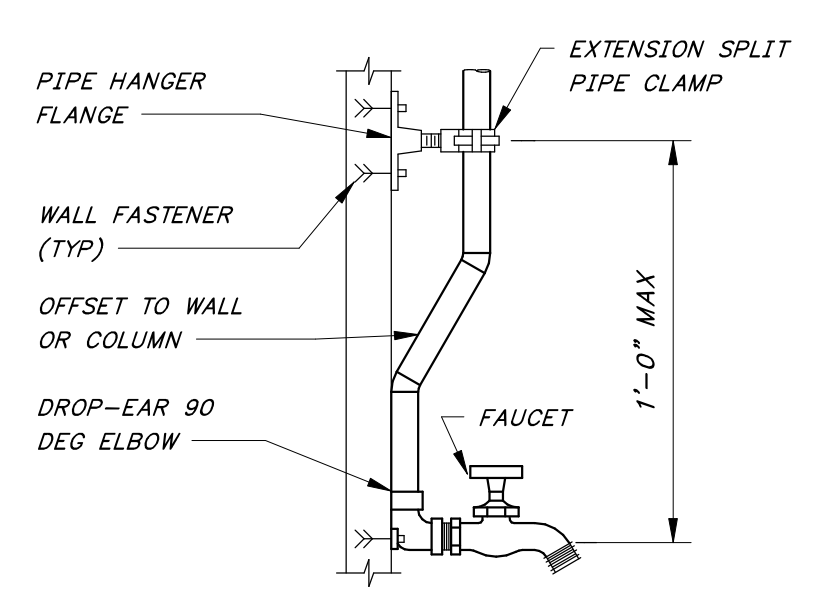
8/26/2024 4:40:09 PM / RLG / PLUMBING



**F GRADE CLEANOUT**  
NO SCALE

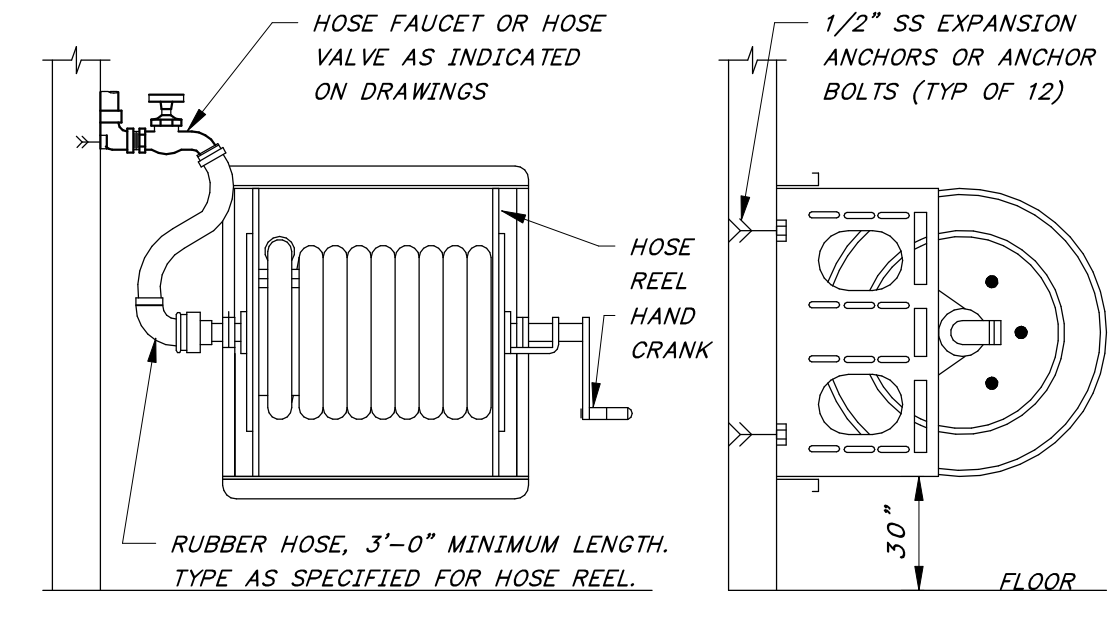


**G ELECTRIC WATER HEATER - INSTANTANEOUS UNDER THE SINK**  
NO SCALE



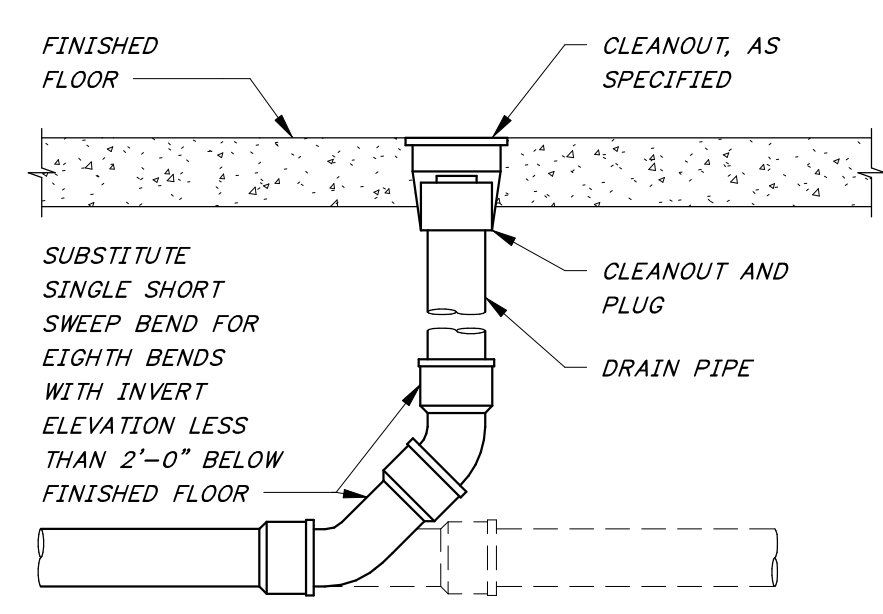
**NOTES:**  
1. PROVIDE VACUUM BREAKER ON HOSE FAUCETS WHERE INDICATED ON THE PLANS.  
2. SEE PLANS AND SPECIFICATIONS FOR PIPE DIAMETERS.

**H HOSE FAUCET PIPE MOUNTING**  
NO SCALE

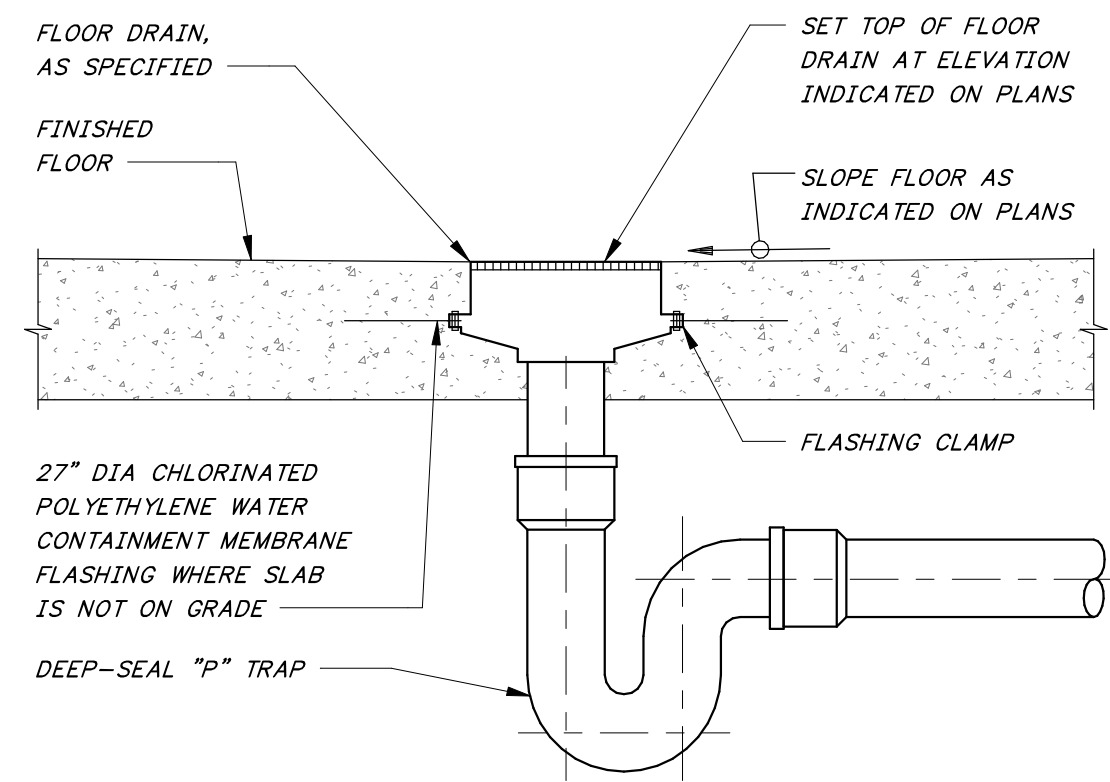


**NOTE:**  
THE EXACT ORIENTATION OF WATER SUPPLY PIPE AND HOSE VALVE SHOULD BE AS REQUIRED TO SUIT THE SPECIFIC INSTALLATION.

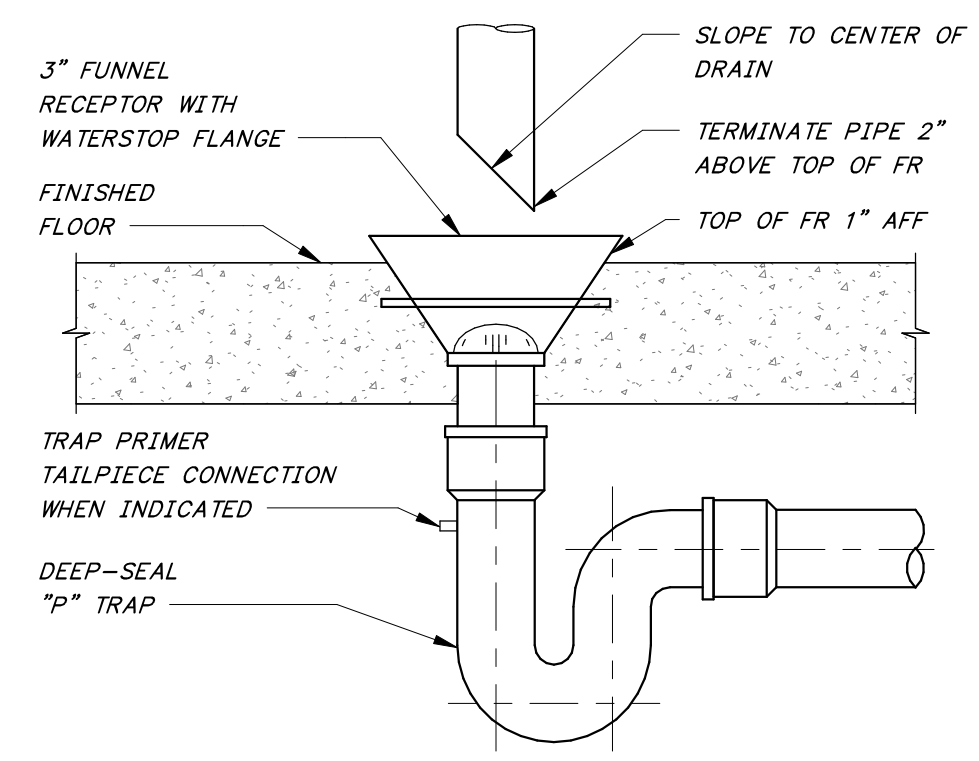
**J WALL MOUNTED HOSE REEL**  
NO SCALE



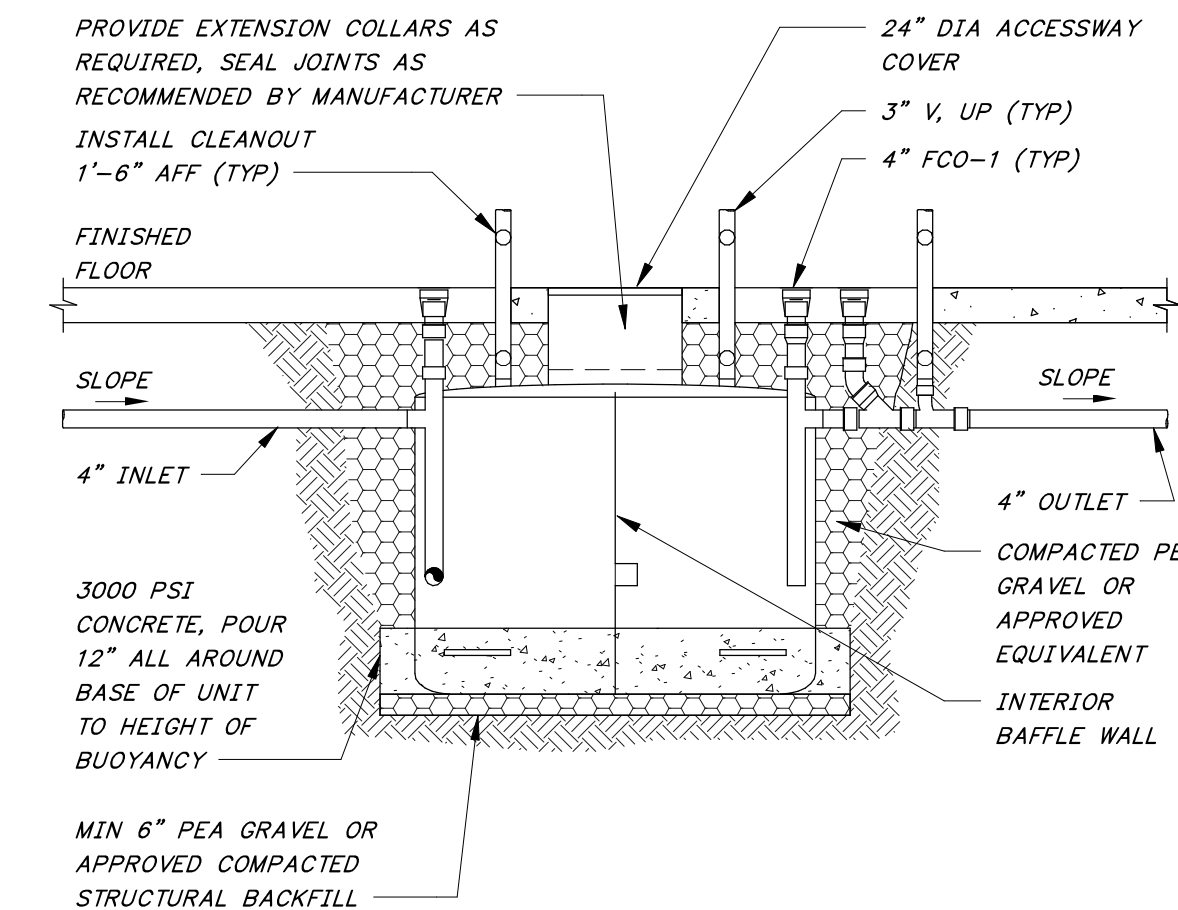
**K FLOOR CLEANOUT - NEW FLOOR**  
NO SCALE



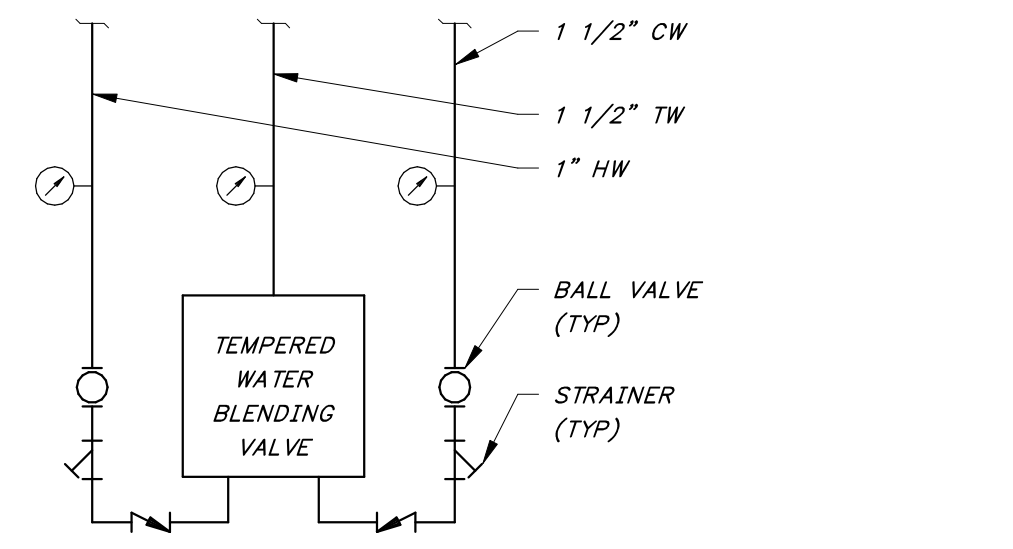
**L FLOOR DRAIN - NEW FLOOR**  
NO SCALE



**M FUNNEL DRAIN - NEW FLOOR**  
NO SCALE



**N OIL INTERCEPTOR**  
NO SCALE



**P TEMPERED WATER BLENDING VALVE DETAIL**  
NO SCALE

Autodesk Docs: //406493 - Rogers PCF Solids Phase 2/406493-Solids Building-BV.rvt

**HAWKINS WEIR ENGINEERS, INC.**  
**BLACK & VEATCH**

ROGERS, ARKANSAS  
 ROGERS POLLUTION CONTROL FACILITY (PCF)  
 SOLIDS HANDLING IMPROVEMENTS, PHASE II  
**PLUMBING DETAILS**  
 FOR: ROGERS WATER UTILITIES

DATE: AUGUST 2024  
 SCALE: NONE  
 DESIGNED BY: DBR  
 DRAWN BY: RLG  
 HWEI NO.: 2020043  
 FILENAME:

SHEET NO. **PZ-01**