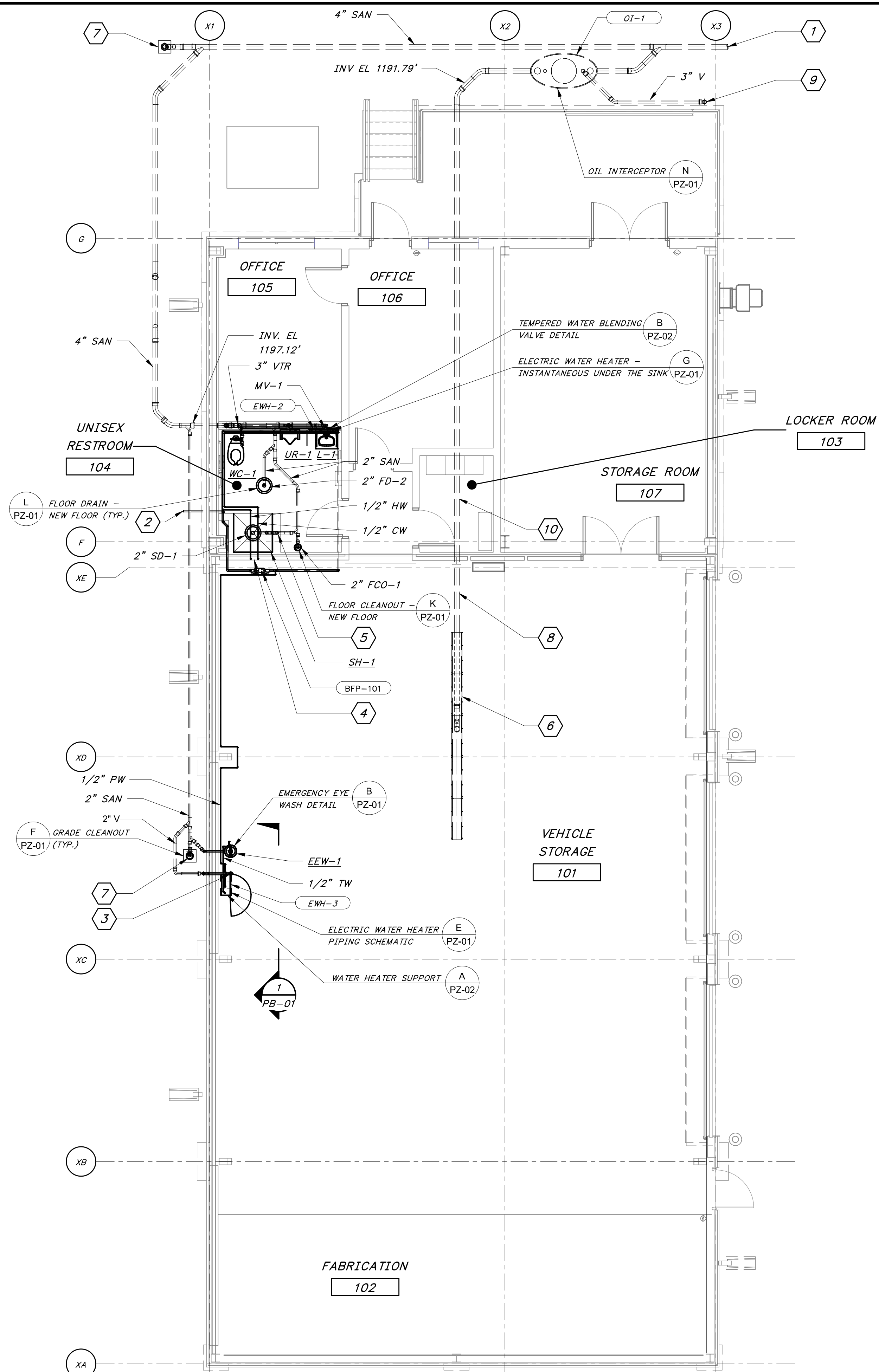


8/27/2024 12:05:28 PM / RLG / MAINTENANCE BUILDING

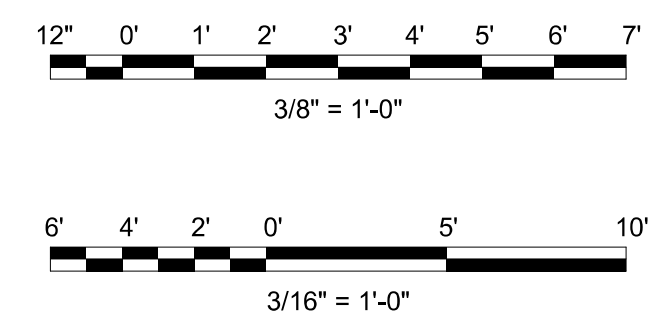
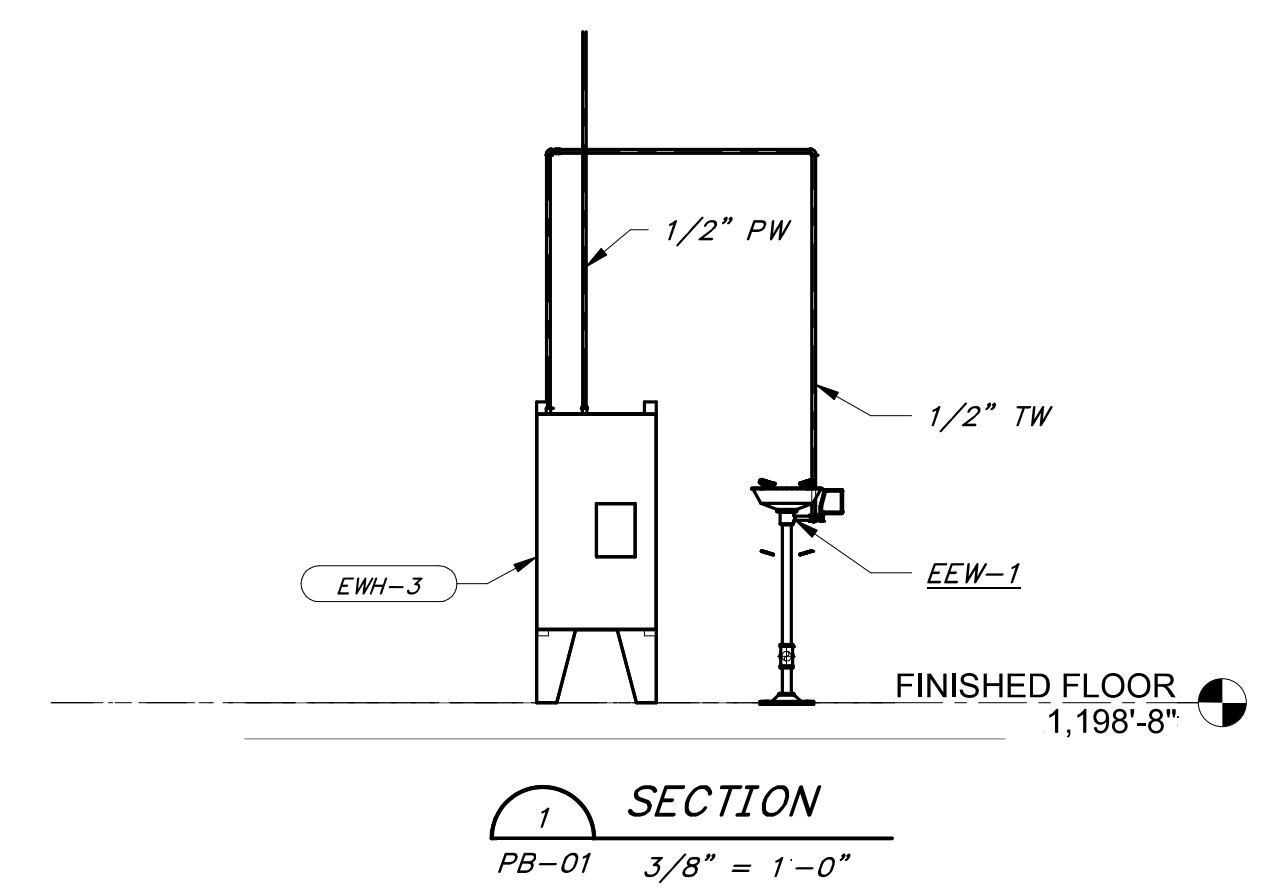
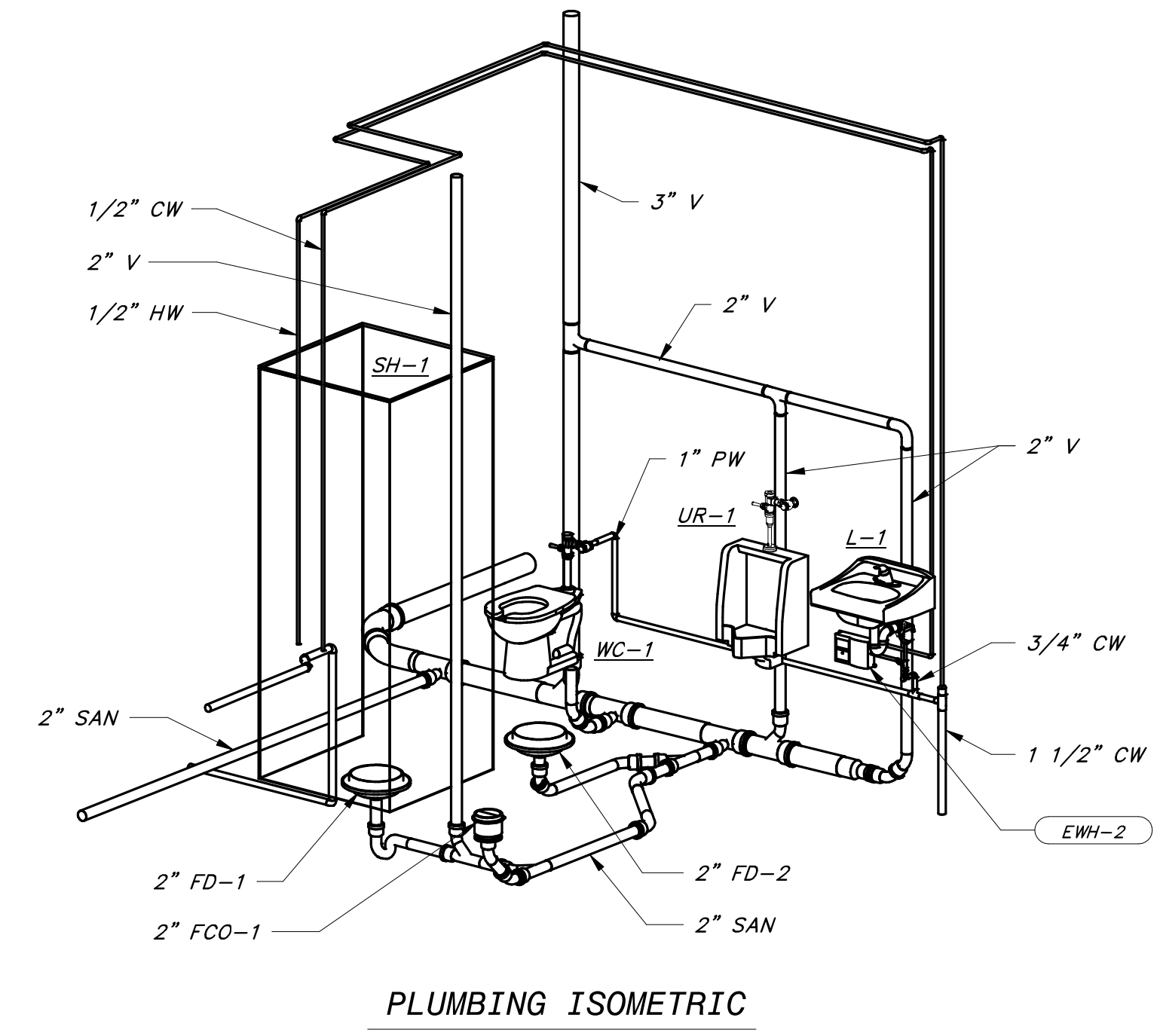
Autodesk Docs: //406493 - Rogers PCF Solids Phase 2/406493-Maintenance Building-BVrvrt



OPERATING LEVEL - PLUMBING PLAN
3/16" = 1'-0"

- SHEET KEYNOTES**
- 4" SAN, FOR CONTINUATION, SEE SHEET NO. C-4.
 - 1 1/2" CW, FOR CONTINUATION, SEE SHEET NO. C-4.
 - 2" VENT TO 3" VTR.
 - 1/2" HOT & COLD WATER CONNECTION.
 - PROVIDED VENT FOR SHOWER DRAIN.
 - EXISTING TRENCH DRAIN.
 - GRADE CLEANOUT.
 - EXISTING 4" OIL/GREASE LINE. CONFIRM EXISTING VENT LINE TO REMAIN.
 - VENT TERMINATE 7' ABOVE OPERATING LEVEL
 - EXISTING OIL INTERCEPTOR TO BE REMOVED. CONNECT NEW DRAIN AND EXTEND TO NEW OIL INTERCEPTOR AS SHOWN. FIELD COORDINATE EXACT LOCATION.

DATE	
REVISION	



HAWKINS WEIR ENGINEERS, INC.
BLACK & VEATCH

ROGERS, ARKANSAS
ROGERS POLLUTION CONTROL FACILITY (PCF)
SOLIDS HANDLING IMPROVEMENTS, PHASE II

MAINTENANCE BUILDING
PLUMBING FLOOR PLAN

FOR: ROGERS WATER UTILITIES

DATE: AUGUST 2024
SCALE: AS SHOWN
DESIGNED BY: DBR
DRAWN BY: RLG
HWEI NO.: 2020043
FILENAME:

SHEET NO.
PB-01