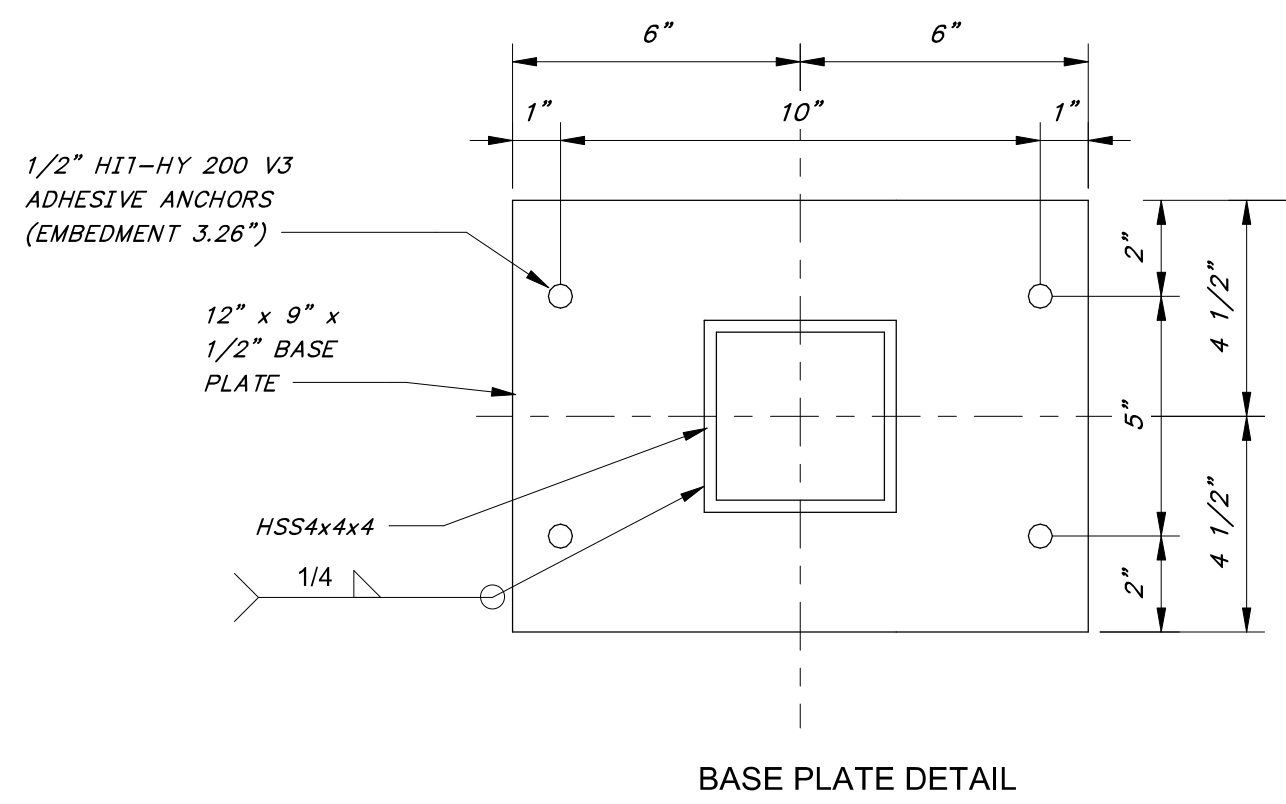


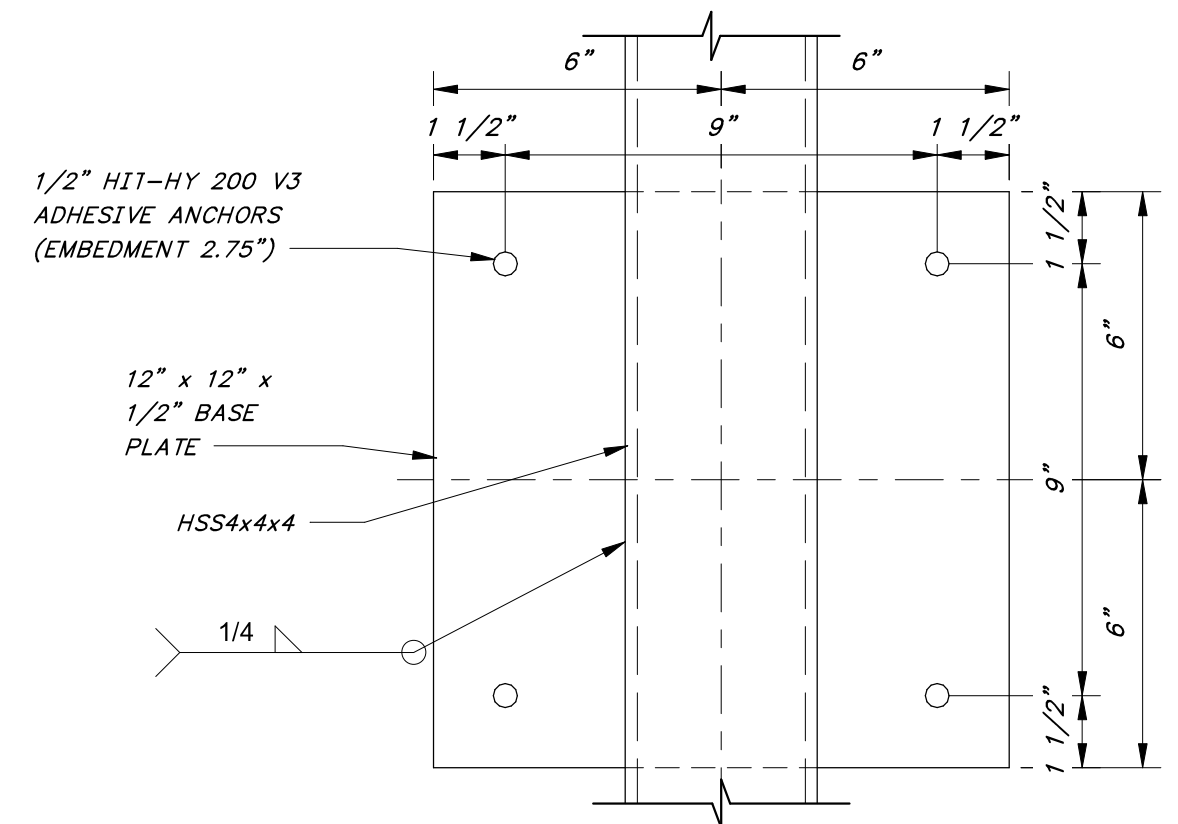
8/27/2024 9:18:26 AM / JCD / MECHANICAL DETAILS

Autodesk Docs: //406493 - Rogers PCF Solids Phase 2/406493-Solids Building-BV.rvt



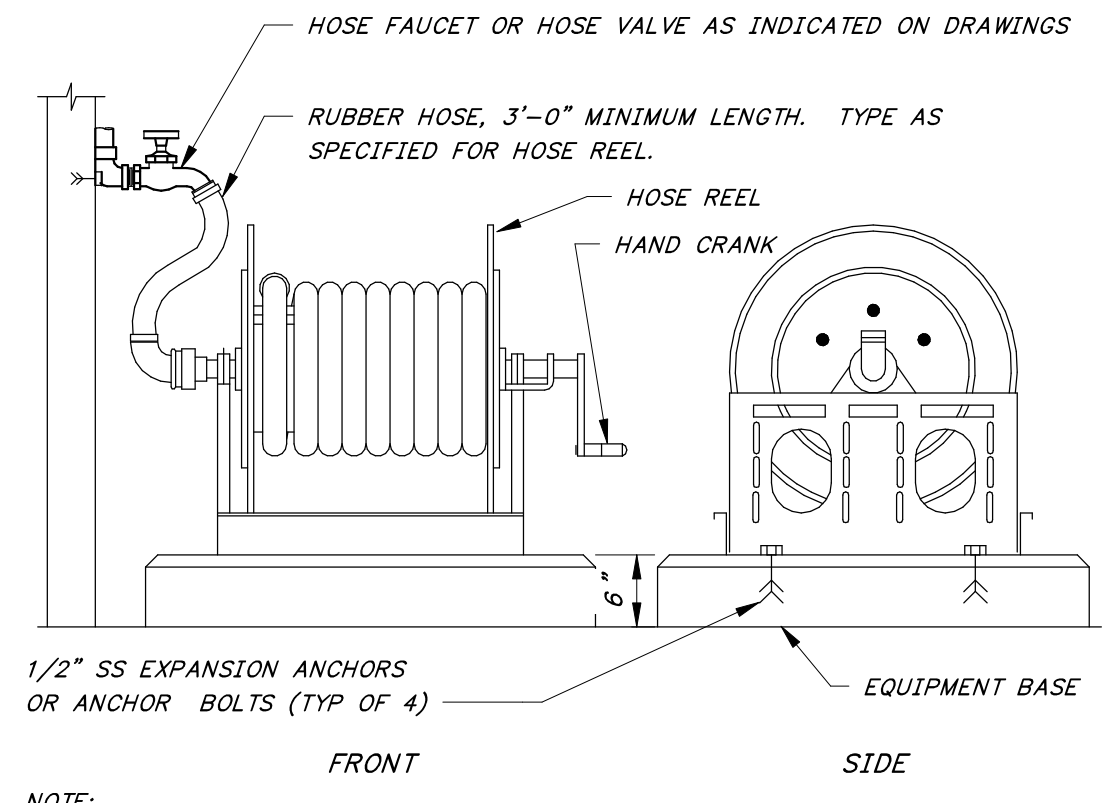
BASE PLATE DETAIL

DETAIL A
3" = 1'-0"



ANCHOR PLATE DETAIL

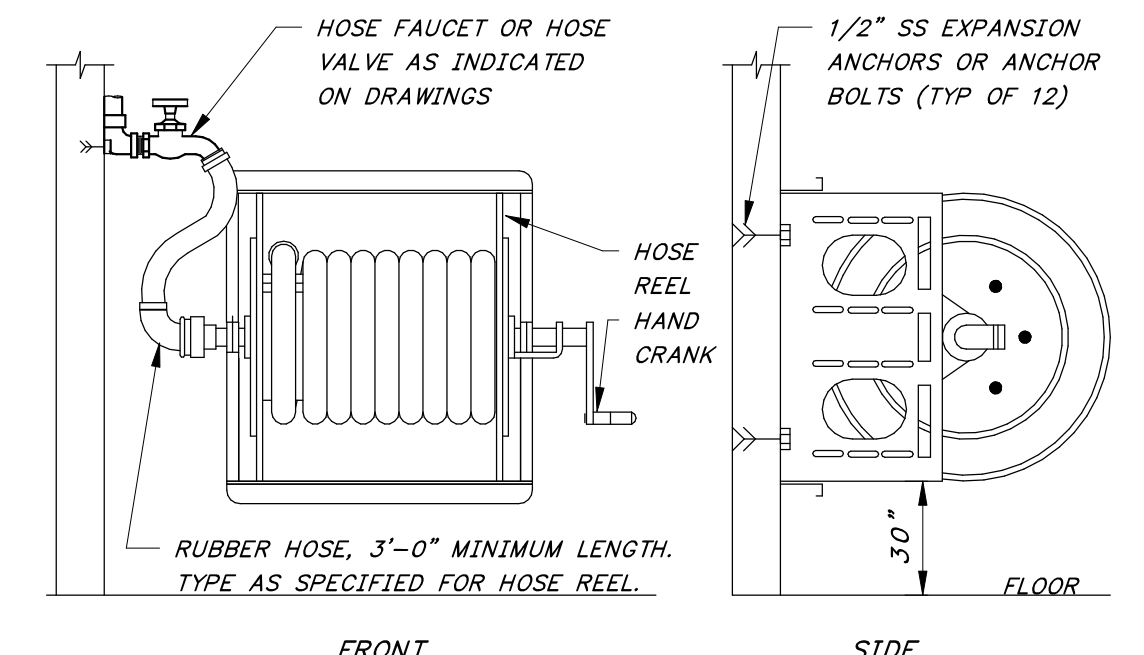
DETAIL B
3" = 1'-0"



NOTE: THE EXACT ORIENTATION OF WATER SUPPLY PIPE AND HOSE VALVE SHOULD BE AS REQUIRED TO SUIT THE SPECIFIC INSTALLATION.

FLOOR MOUNTED HOSE REEL

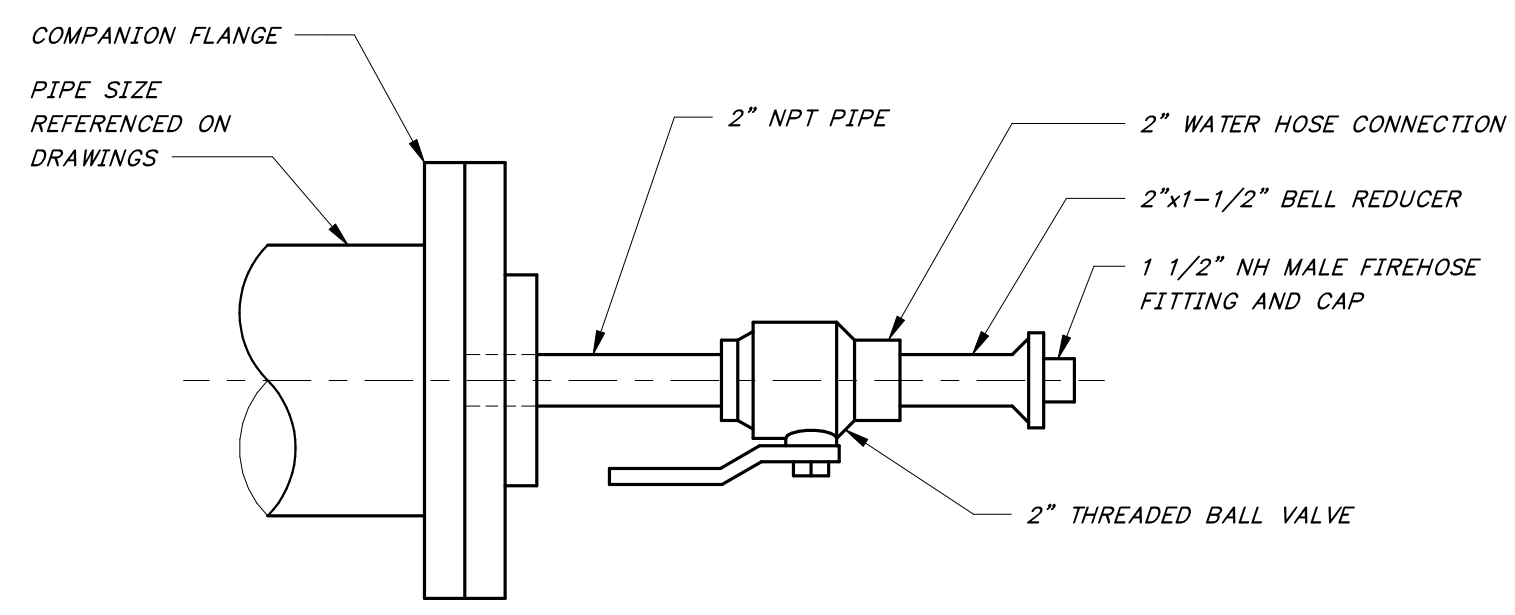
DETAIL C
12" = 1'-0"



NOTE: THE EXACT ORIENTATION OF WATER SUPPLY PIPE AND HOSE VALVE SHOULD BE AS REQUIRED TO SUIT THE SPECIFIC INSTALLATION.

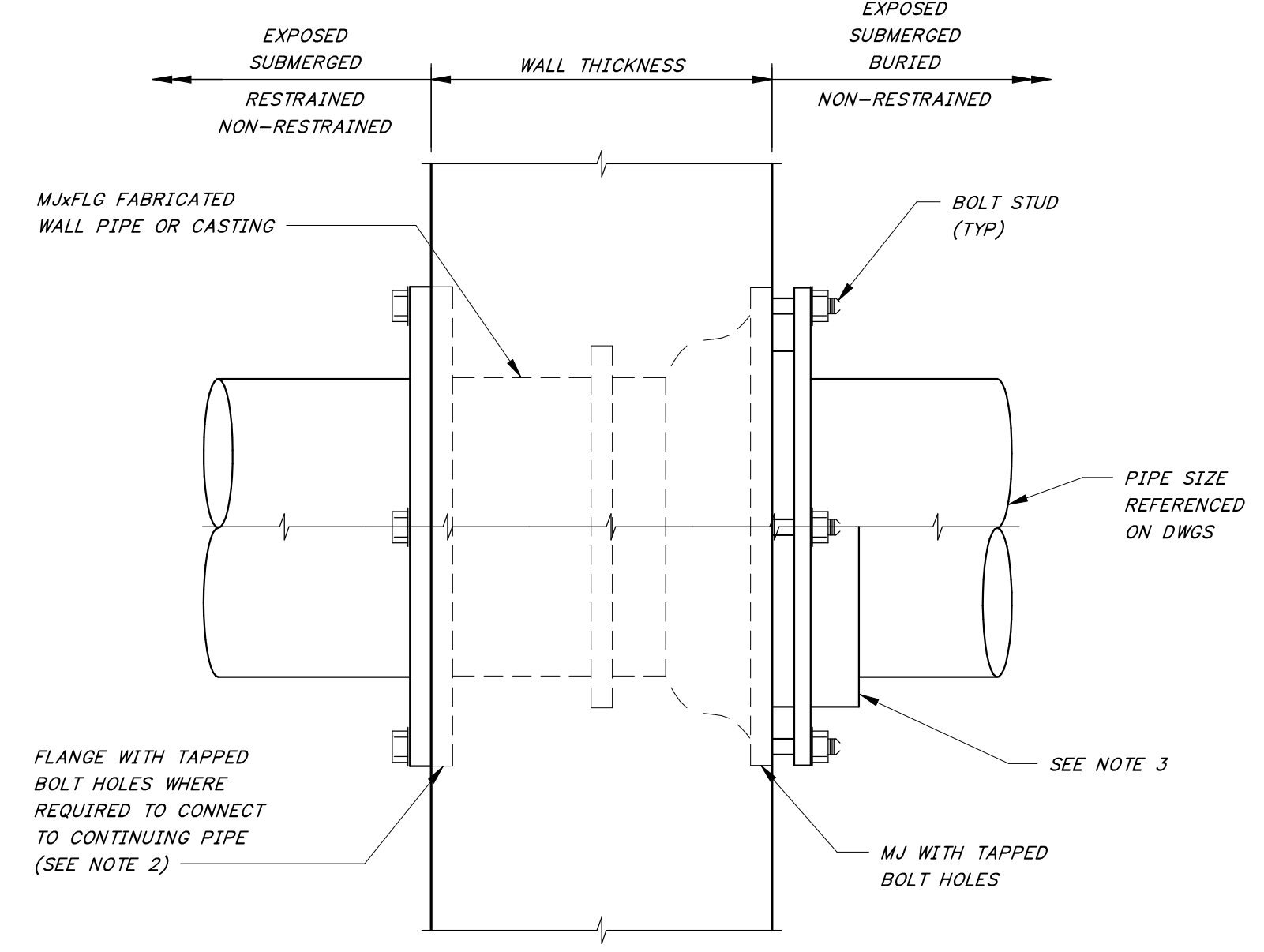
WALL MOUNTED HOSE REEL

DETAIL D
12" = 1'-0"



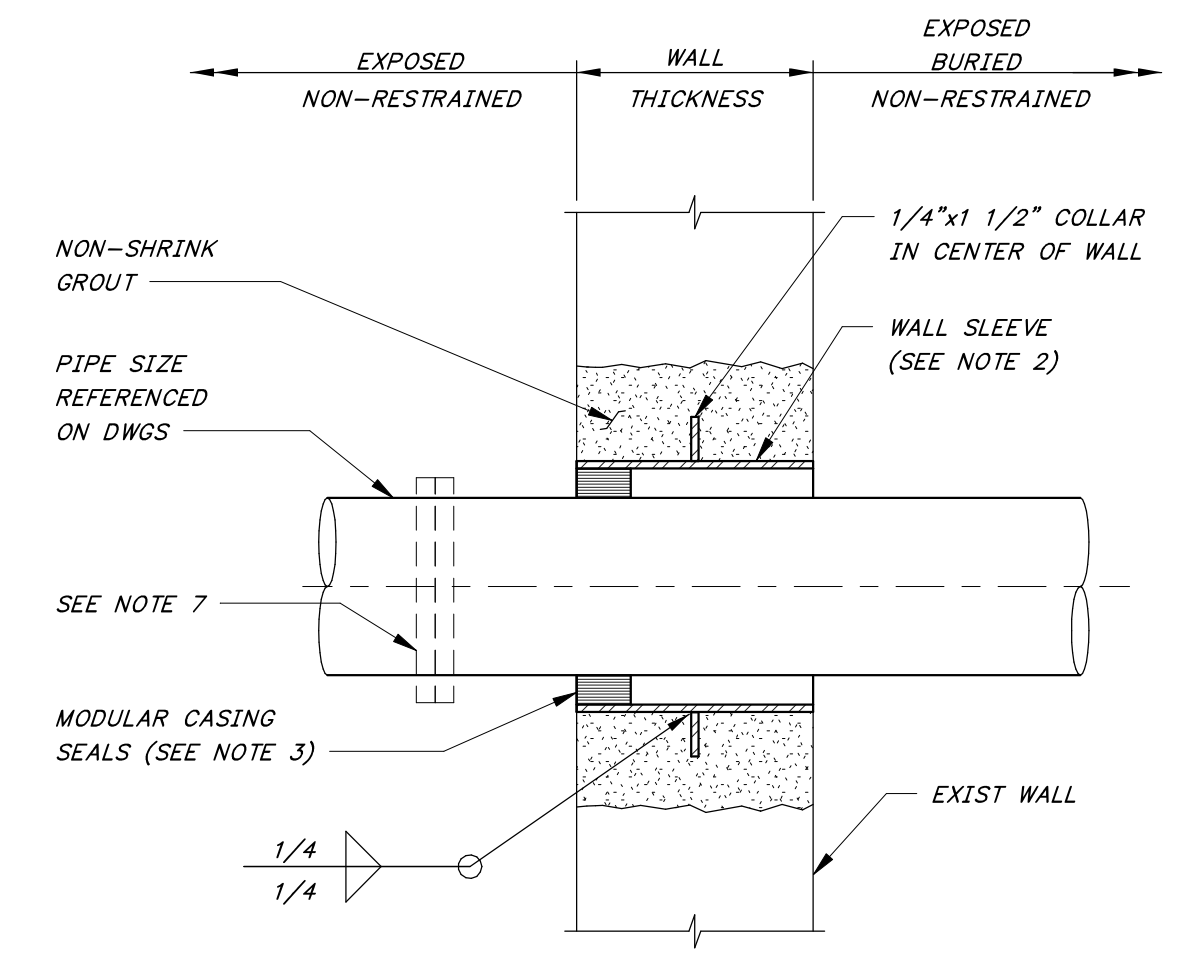
COMPANION FLANGE WITH BLOWOUT CONNECTION (BOF)

DETAIL E
12" = 1'-0"



FLANGED - MECHANICAL JOINT WALL PIPE

DETAIL G
12" = 1'-0"



WALL SLEEVE AT EXISTING CONCRETE WALL

DETAIL H
12" = 1'-0"

- NOTES:
- ALL 2" & SMALLER PIPE AND FITTINGS SHALL BE GALVANIZED STEEL.

- NOTES :
- WALL PIPE SHALL BE ORIENTED SO THAT THE BOLT HOLES STRADDLE THE TOP CENTERLINE.
 - WHERE PIPE IS REQUIRED ON ONE SIDE ONLY, PROVIDE MJ/FLG WALL PIPE.
 - FOR STEEL PIPE APPLICATIONS BUILD UP END OF STEEL PIPE TO FIT MJ WALL PIPE.
 - FOR BURIED PIPING, CONTRACTOR SHALL PROVIDE AN ADDITIONAL FIELD JOINT AS CLOSE AS PRACTICAL TO FACE OF WALL, BUT NO MORE THAN 5 FEET.
 - USE WAX TAPE TO PROTECT ALL BURIED FERROUS SURFACES, INCLUDING PAINTED SURFACES. FOR PROTECTION OF ADJACENT PIPE BARREL SURFACES, SHRINK WRAP MAY BE USED IN LIEU OF WAX TAPE. SEE SPECIFICATIONS.

- NOTES :
- CUT OPENING FOR WALL SLEEVE, ROUGHEN EXIST CONCRETE, APPLY BONDING AGENT AND FILL WITH NON-SHRINK GROUT PER THE SPECIFICATIONS. DIAMETER OF OPENING TO BE COLLAR DIAMETER + 4".
 - WALL SLEEVE, SCHEDULE 40 STEEL PIPE FOR 12" AND SMALLER SLEEVES, 1/4" STEEL PIPE FOR SLEEVES LARGER THAN 12", AND HOT DIP GALVANIZED AFTER FABRICATION, 304 SS, OR OTHER MATERIAL AS SPECIFIED OR INDICATED ON DRAWINGS. COORDINATE SLEEVE SIZE WITH MODULAR CASING SEAL MANUFACTURER.
 - WHERE SOIL MAY BE PRESENT, USE TWO SETS OF CASING SEALS. ONE AT EACH FACE OF WALL.
 - FIRESAFING TO BE PROVIDED AT ALL RATED WALLS INDICATED ON THE DRAWINGS AND INSTALLED PER ACCEPTED UL RATED SYSTEM.
 - FOR BURIED PIPING, CONTRACTOR SHALL PROVIDE AN ADDITIONAL FIELD JOINT AS CLOSE AS PRACTICAL TO FACE OF WALL, BUT NO MORE THAN 5 FEET.
 - USE WAX TAPE TO PROTECT ALL BURIED FERROUS SURFACES INCLUDING PAINTED SURFACES. FOR PROTECTION OF ADJACENT PIPE BARREL SURFACES, SHRINK WRAP MAY BE USED IN LIEU OF WAX TAPE. SEE SPECIFICATIONS.
 - TO MINIMIZE SLEEVE SIZE, PROVIDE A SCREW-ON FLANGE, GROOVED COUPLING, OR MECHANICAL COUPLING WITH ANCHOR STUDS ON ONE SIDE OF OPENING.

ONE INCH AT FULL SIZE IF NOT ONE INCH SCALE ACCORDINGLY

DATE	
REVISION	



HAWKINS-WEIR ENGINEERS, INC.
BLACK & VEATCH

ROGERS, ARKANSAS
 ROGERS POLLUTION CONTROL FACILITY (PCF)
 SOLIDS HANDLING IMPROVEMENTS, PHASE II
 MECHANICAL DETAILS
 FOR: ROGERS WATER UTILITIES

DATE: AUGUST 2024
 SCALE: AS SHOWN
 DESIGNED BY: KJU/MNH
 DRAWN BY: JCD
 HWEI NO.: 2020043
 FILENAME:

SHEET NO. MZ-01