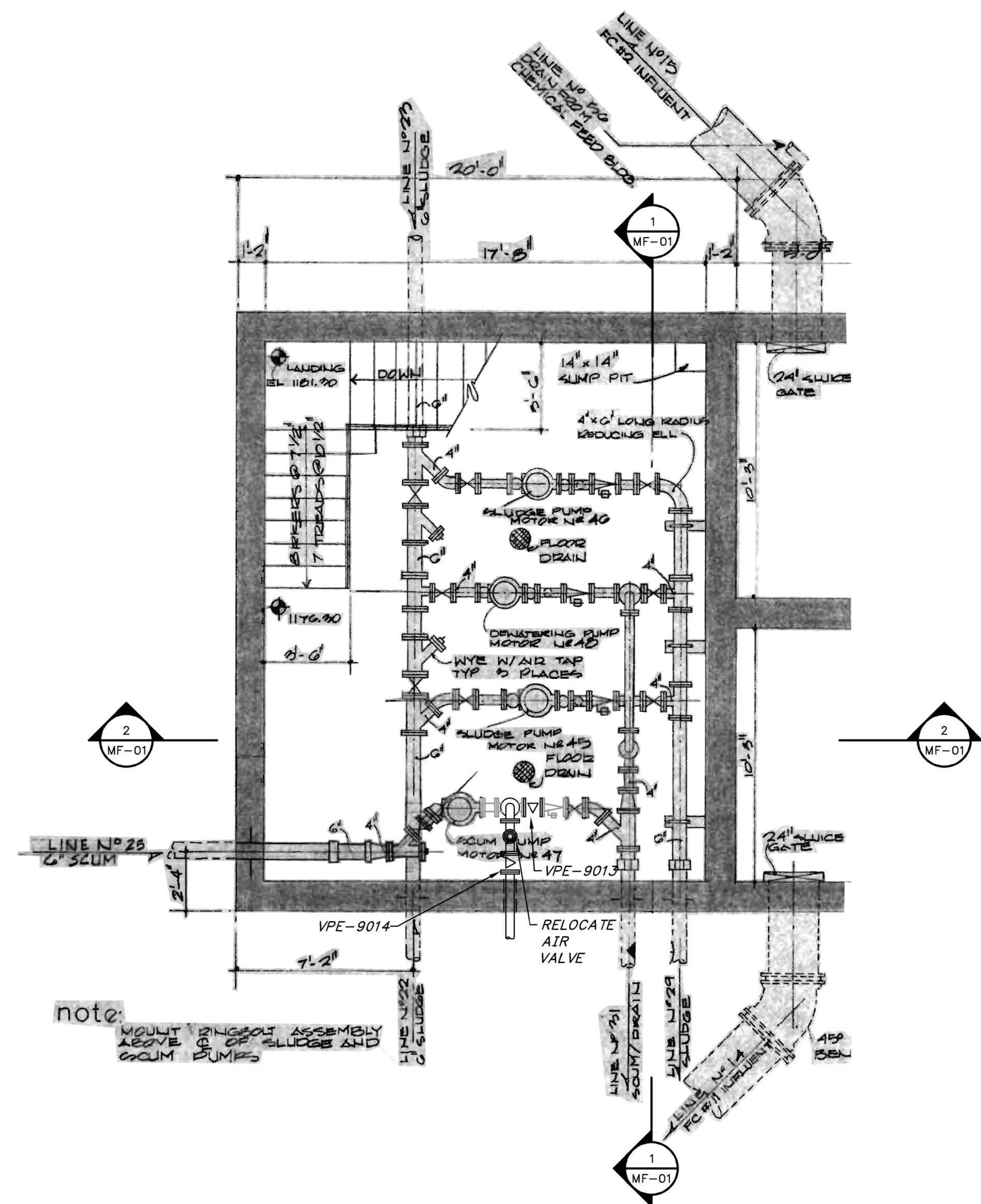


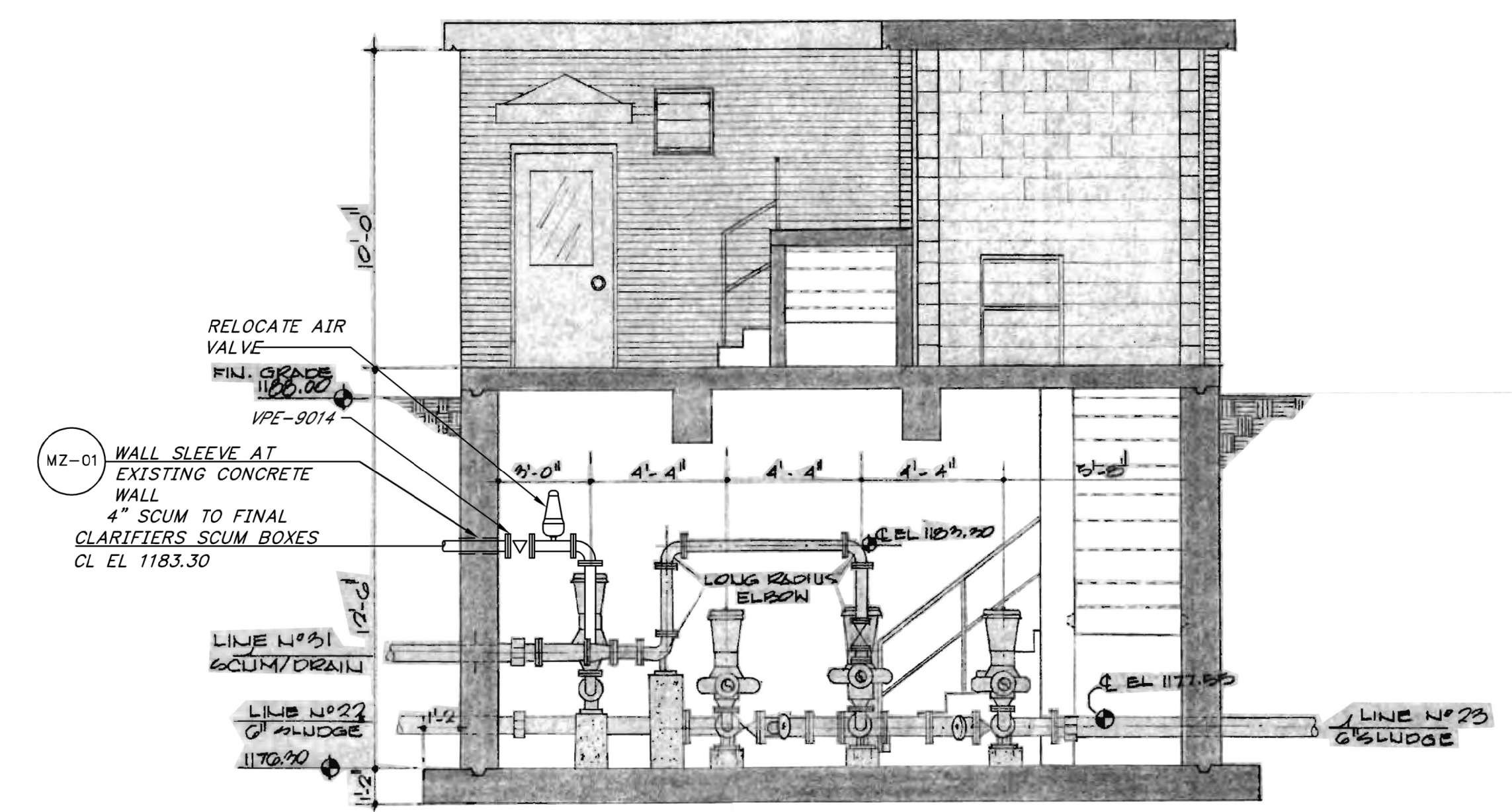
C:\PW_WORKING\BWL-AMERICAS\1594227\MF-01.DWG, 8/27/2024 9:48 AM, DONAVANT, JOSEPH C., NO-SSM-FIELDS



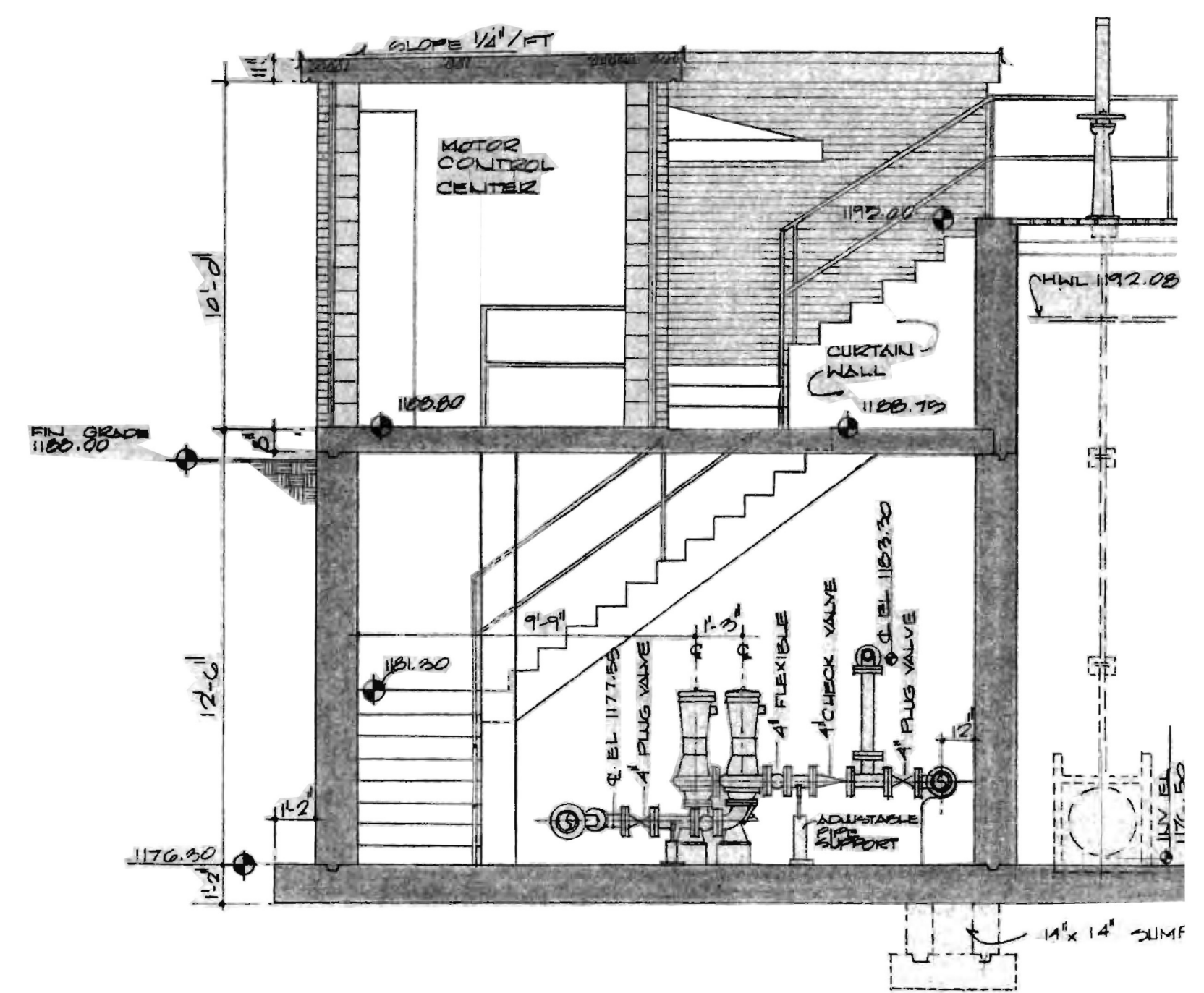
note
MOUNT SCUM PUMP ASSEMBLY ABOVE SCUM PUMPS

FINAL CLARIFIER DIVISION BOX AND PUMPING STATION

DETAIL
1/4" = 1'-0" (A)



SECTION 1
1/4" = 1'-0" (MF-01)



SECTION 2
1/4" = 1'-0" (MF-01)

1"
ONE INCH AT FULL SIZE IF NOT ONE INCH SCALE ACCORDINGLY

DATE	
REVISION	



HAWKINS WEIR ENGINEERS, INC.
BLACK & VEATCH

ROGERS, ARKANSAS
ROGERS POLLUTION CONTROL FACILITY (RPF)
SOLIDS HANDLING IMPROVEMENTS, PHASE II
FINAL CLARIFIER DIVISION BOX AND PUMPING STATION
PLAN AND SECTIONS
FOR: ROGERS WATER UTILITIES

DATE: AUGUST 2024
SCALE: AS SHOWN
DESIGNED BY: KJJ
DRAWN BY: JCD
HWEI NO.: 2020043
FILENAME:

SHEET NO.
MF-01