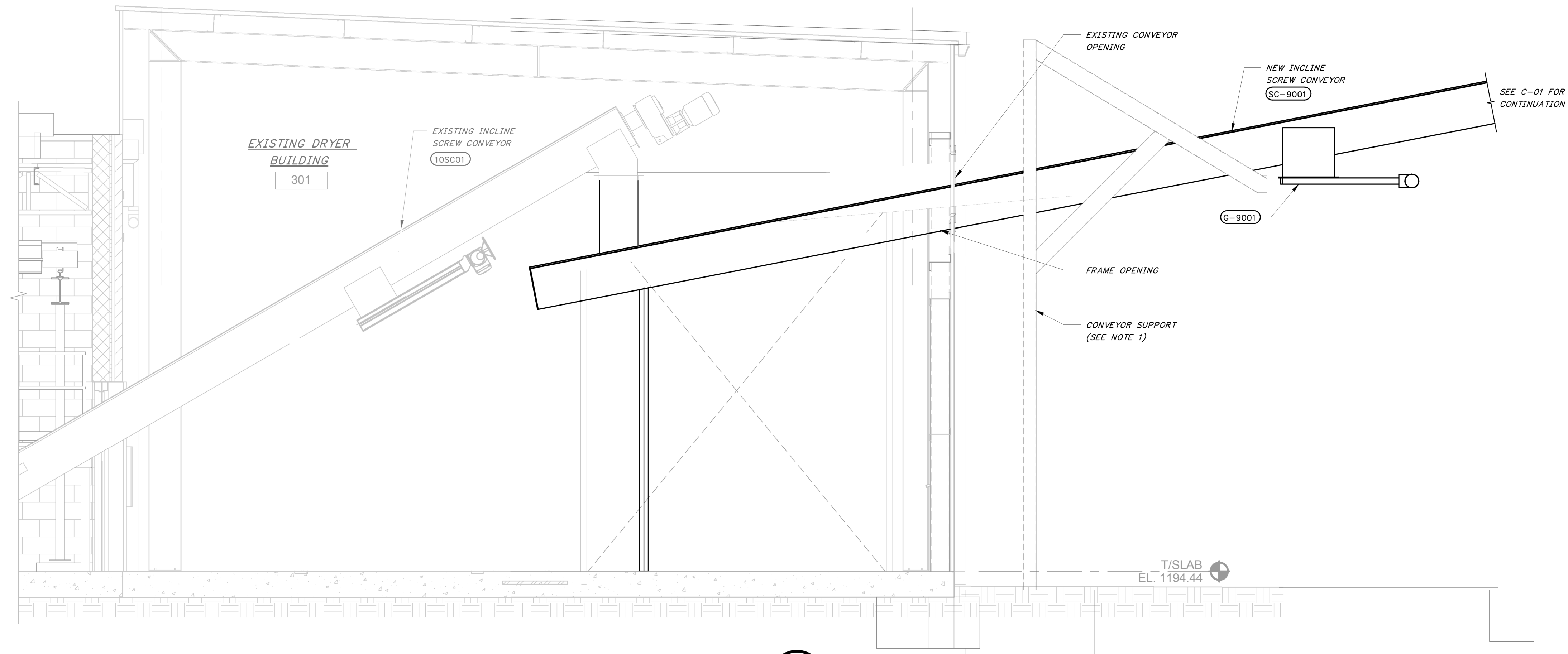
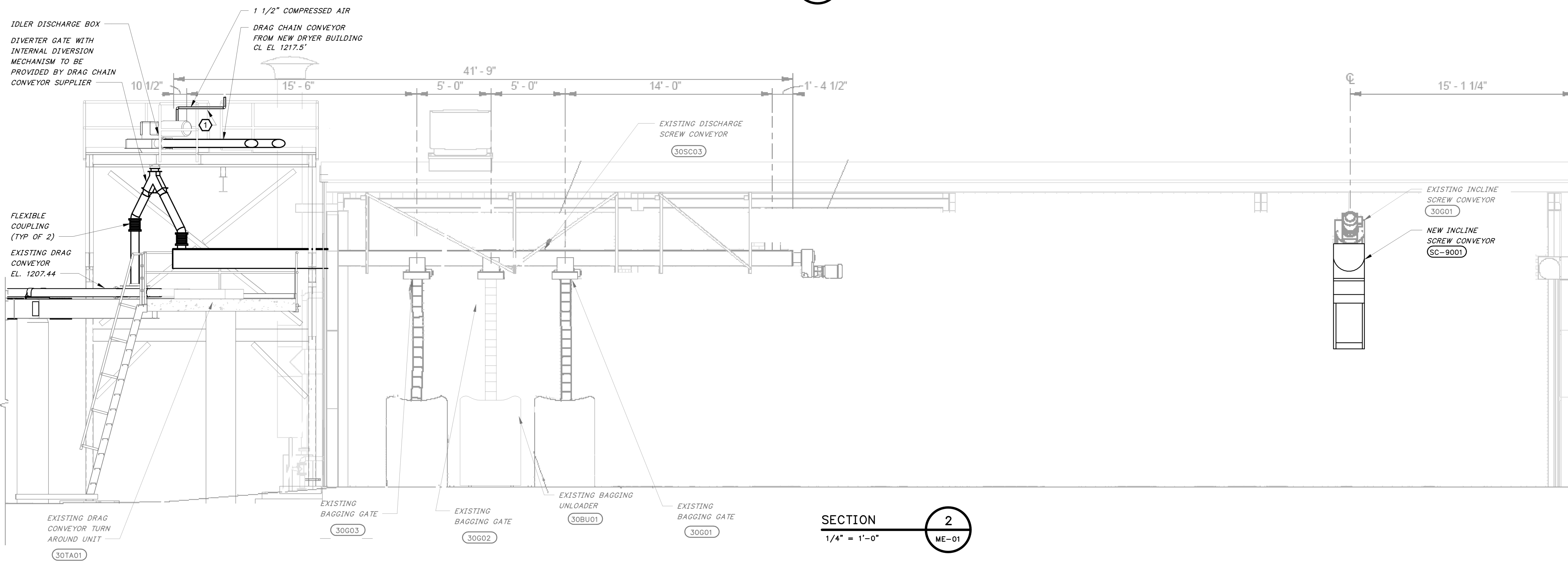


8/27/2024 9:18:26 AM / JCD / DRYER BUILDING ENLARGED SECTION

Autodesk Docs: //406493 - Rogers PCF Solids Phase 2/406493-Solids Building-BV.rvt



SECTION 1  
3/8" = 1'-0"  
ME-01



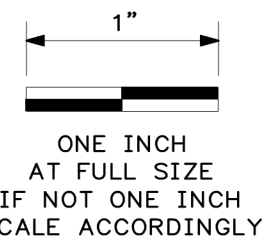
SECTION 2  
1/4" = 1'-0"  
ME-01

GENERAL SHEET NOTES:

- SCREW CONVEYOR MANUFACTURER TO PROVIDE SUPPORT A MINIMUM OF 20 FEET FROM THE NEW DRYER BUILDING.

KEYED NOTES:

- CONTRACTOR TO ROUTE THE COMPRESSED AIR PIPE TO THE AUTO TAKE-UP DEVICE ON THE IDLER BOX OF THE TUBULAR CONVEYOR DRAG CHAIN CONVEYOR.



DATE	REVISION



**HAWKINS-WEIR ENGINEERS, INC.**  
BLACK & VEATCH

ROGERS, ARKANSAS  
ROGERS POLLUTION CONTROL FACILITY (PCF)  
SOLIDS HANDLING IMPROVEMENTS, PHASE II  
EXISTING DRYER BUILDING ENLARGED SECTION  
FOR: ROGERS WATER UTILITIES

DATE: AUGUST 2024  
SCALE: AS SHOWN  
DESIGNED BY: KJJ  
DRAWN BY: JCD  
HWET NO.: 2020043  
FILENAME:

SHEET NO.  
**ME-02**