

8/27/2024 9:18:25 AM / JCD / DRYER BUILDING SECTION

Autodesk Docs: //406493 - Rogers PCF Solids Phase 2/406493-Solids Building-BV.rvt

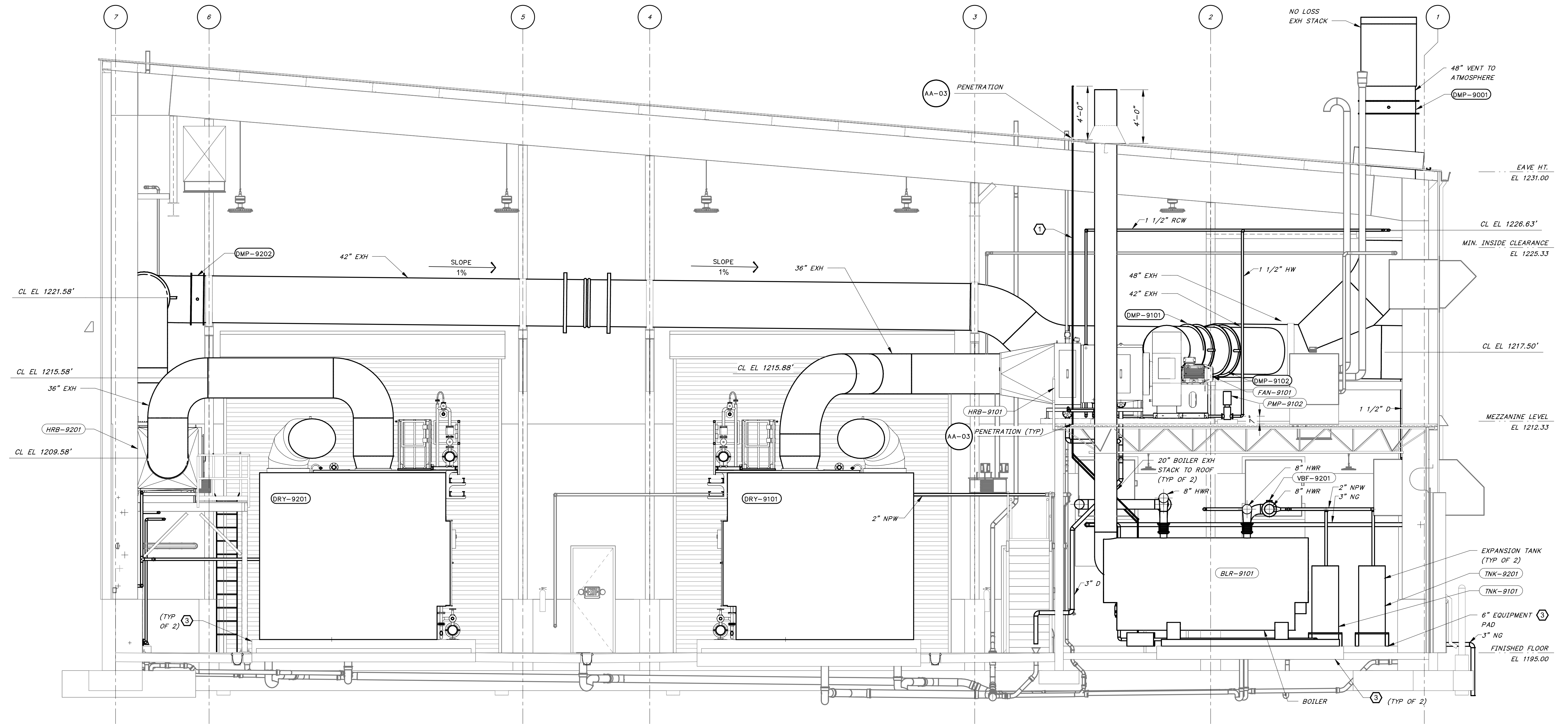
GENERAL SHEET NOTES:

- 1. SEE PROCESS FLOW DIAGRAMS FOR EQUIPMENT SUPPLIED BY THE THERMAL SLUDGE DRYING SYSTEM SUPPLIER.
- 2. CONTRACTOR SHALL PROVIDE INSULATION FOR THERMAL DRYER WATER PIPING, INCLUDING HWS, HWR, AND AIR SYSTEMS.

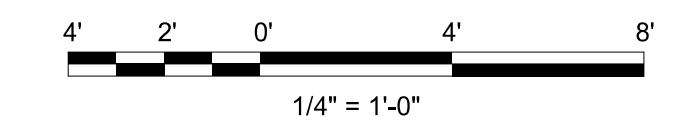
KEYED NOTES:

- ① CONTRACTOR TO FIELD ROUTE GAS TRAIN VENTS TO THE ROOF. VENT TO EXTEND A MINIMUM OF 4'-0" FROM ROOF LINE.
- ② DRYER EXHAUST PIPING SHALL BE SLOPED 1% TOWARDS LOW POINT LOCATION AS INDICATED ON DRAWINGS.

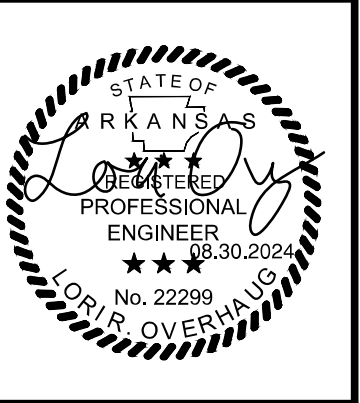
1" = 1" AT FULL SIZE IF NOT ONE INCH SCALE ACCORDINGLY



SECTION 1
1/4" = 1'-0" MA-02



DATE	REVISION



HAWKINS-WEIR ENGINEERS, INC.
BLACK & VEATCH

ROGERS, ARKANSAS
ROGERS POLLUTION CONTROL FACILITY (PCF)
SOLIDS HANDLING IMPROVEMENTS, PHASE II
DRYER BUILDING SECTION
FOR: ROGERS WATER UTILITIES

DATE: AUGUST 2024
SCALE: 1/4" = 1'-0"
DESIGNED BY: KJU/MNH
DRAWN BY: JCD
HWEI NO.: 2020043
FILENAME:

SHEET NO.
MA-10