

8/27/2024 9:18:21 AM / JCD / DRYER BUILDING SECTIONS

Autodesk Docs: //406493 - Rogers PCF Solids Phase 2/406493-Solids Building-BV.rvt

GENERAL SHEET NOTES:

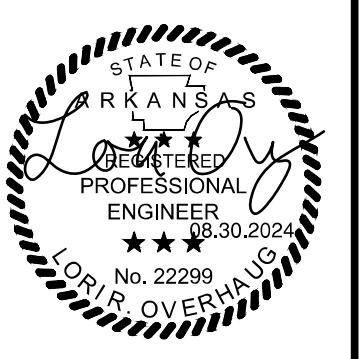
- SEE PROCESS FLOW DIAGRAMS FOR EQUIPMENT SUPPLIED BY THE THERMAL SLUDGE DRYING SYSTEM SUPPLIER.
- CONTRACTOR SHALL PROVIDE INSULATION FOR THERMAL DRYER WATER PIPING, INCLUDING HWS, HWR, AND AIR SYSTEMS.

KEYNOTES:

- SCREW CONVEYOR SUPPORTS TO BE PROVIDED BY SCREW CONVEYOR SUPPLIER. HORIZONTAL SCREW CONVEYORS SHALL BE SUPPORTED BY THE WALL AND THE CAKE HOPPER.
- UNDERNEATH CRANE, TUBULAR DRAG CHAIN CONVEYORS TO BE SUPPORTED FROM BELOW. UNLESS OTHERWISE SHOWN, THE CONTRACTOR SHALL PROVIDE SUPPORTS IN ACCORDANCE WITH SECTION 15140 OR TUBULAR DRAG CHAIN CONVEYOR SUPPLIERS RECOMMENDATIONS, WHICHEVER IS MORE STRINGENT.
- CONTRACTOR TO COORDINATE CONNECTION BETWEEN THERMAL SLUDGE DRYING SYSTEM SUPPLIER AND TUBULAR DRAG CHAIN CONVEYOR SUPPLIER.
- SEE SHEET NO. SA-05 AND SA-06 FOR EQUIPMENT SUPPORT DETAILS.

1" ONE INCH AT FULL SIZE IF NOT ONE INCH SCALE ACCORDINGLY

DATE	REVISION

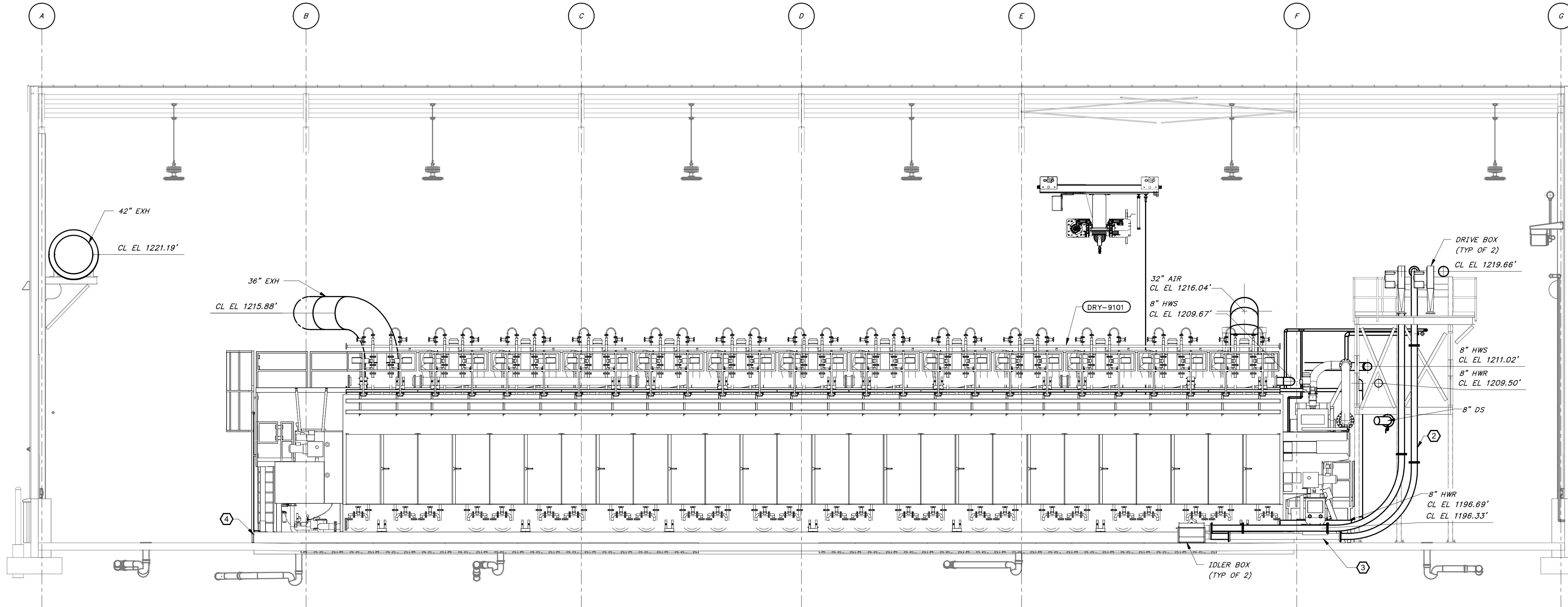


HAWKINS-WEIR ENGINEERS, INC.
BLACK & VEATCH

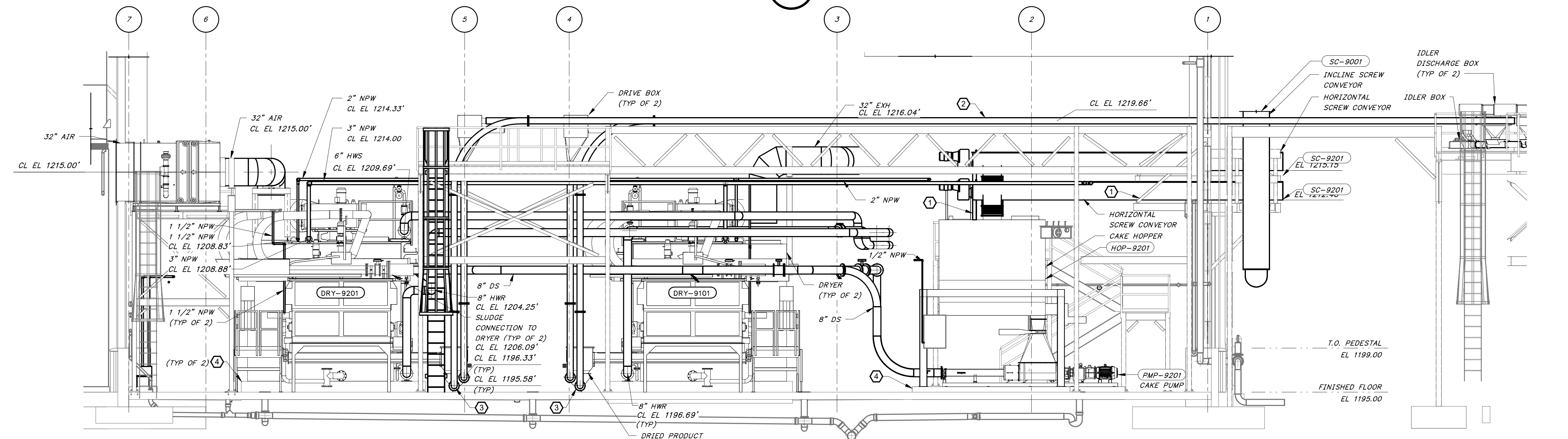
ROGERS, ARKANSAS
 ROGERS POLLUTION CONTROL FACILITY (PCF)
 SOLIDS HANDLING IMPROVEMENTS, PHASE II
 DRYER BUILDING SECTIONS
 FOR: ROGERS WATER UTILITIES

DATE: AUGUST 2024
 SCALE: 3/16" = 1'-0"
 DESIGNED BY: KJJ/MNH
 DRAWN BY: JCD
 HWEI NO.: 2020043
 FILENAME:

SHEET NO. MA-09



SECTION 1
 3/16" = 1'-0" MA-01



SECTION 2
 3/16" = 1'-0" MA-01

