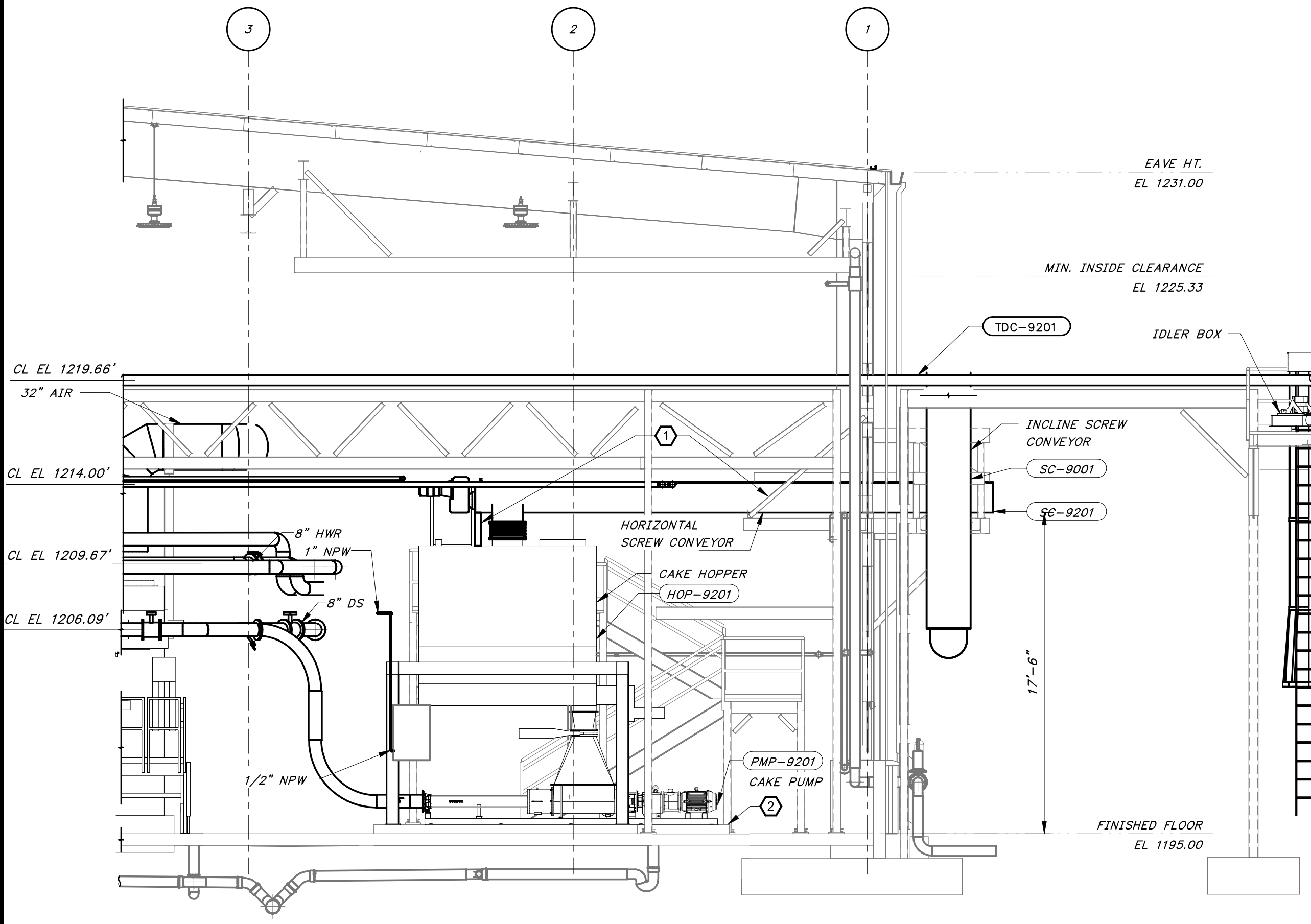
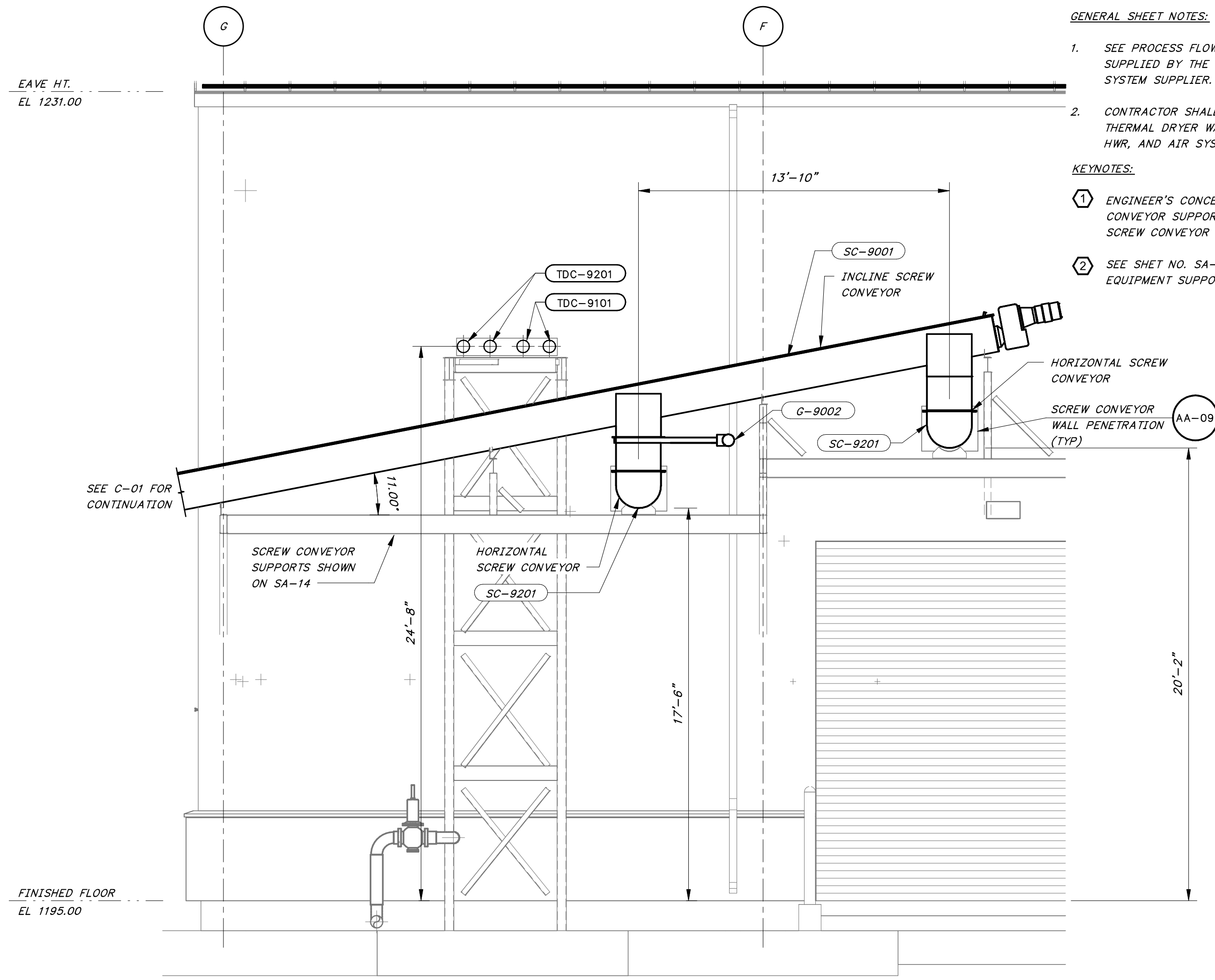


8/27/2024 9:18:12 AM / JCD / DRYER BUILDING SECTIONS

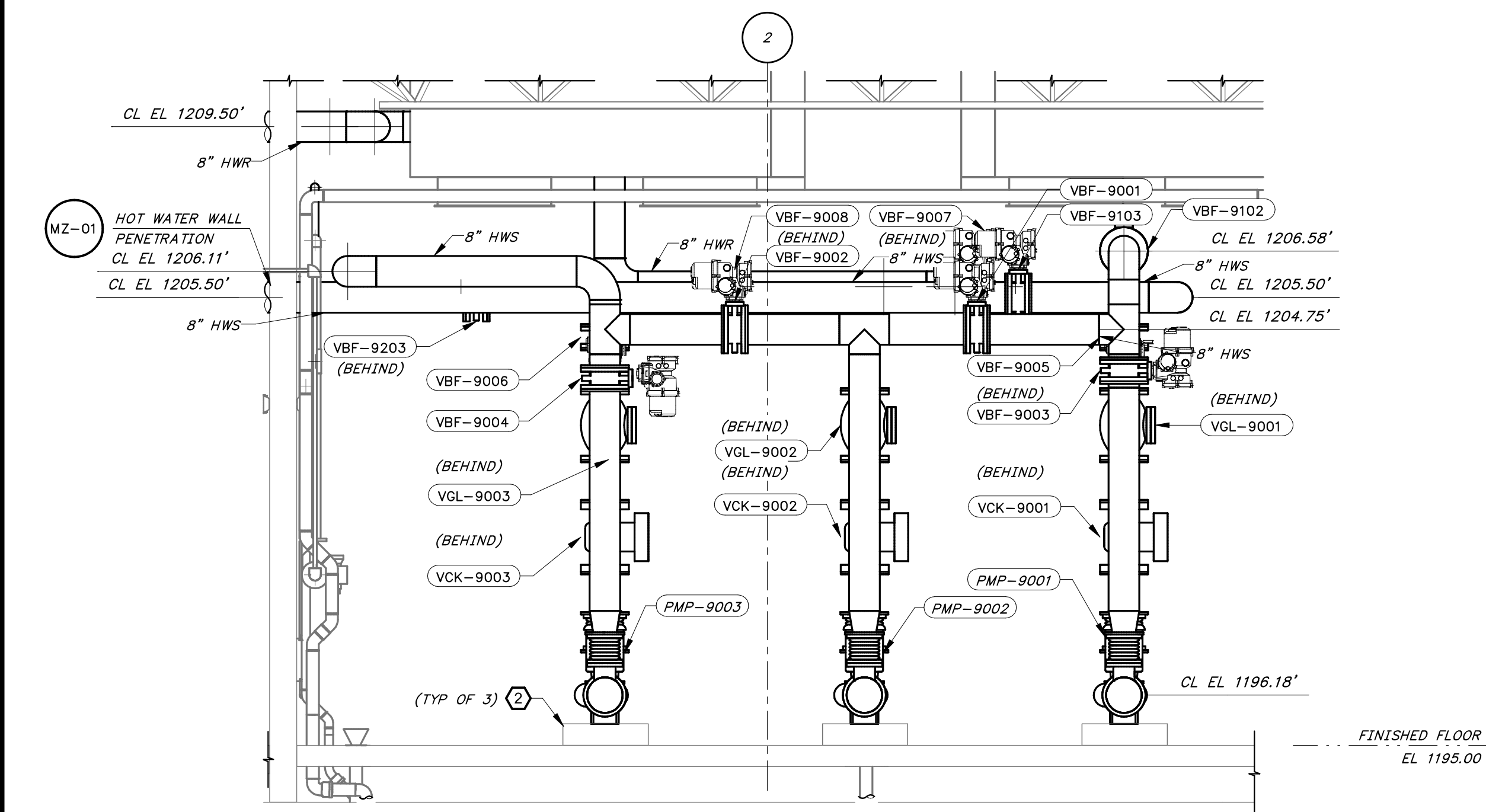
Autodesk Docs: //406493 - Rogers PCF Solids Phase 2/406493-Solids Building-BV.rvt



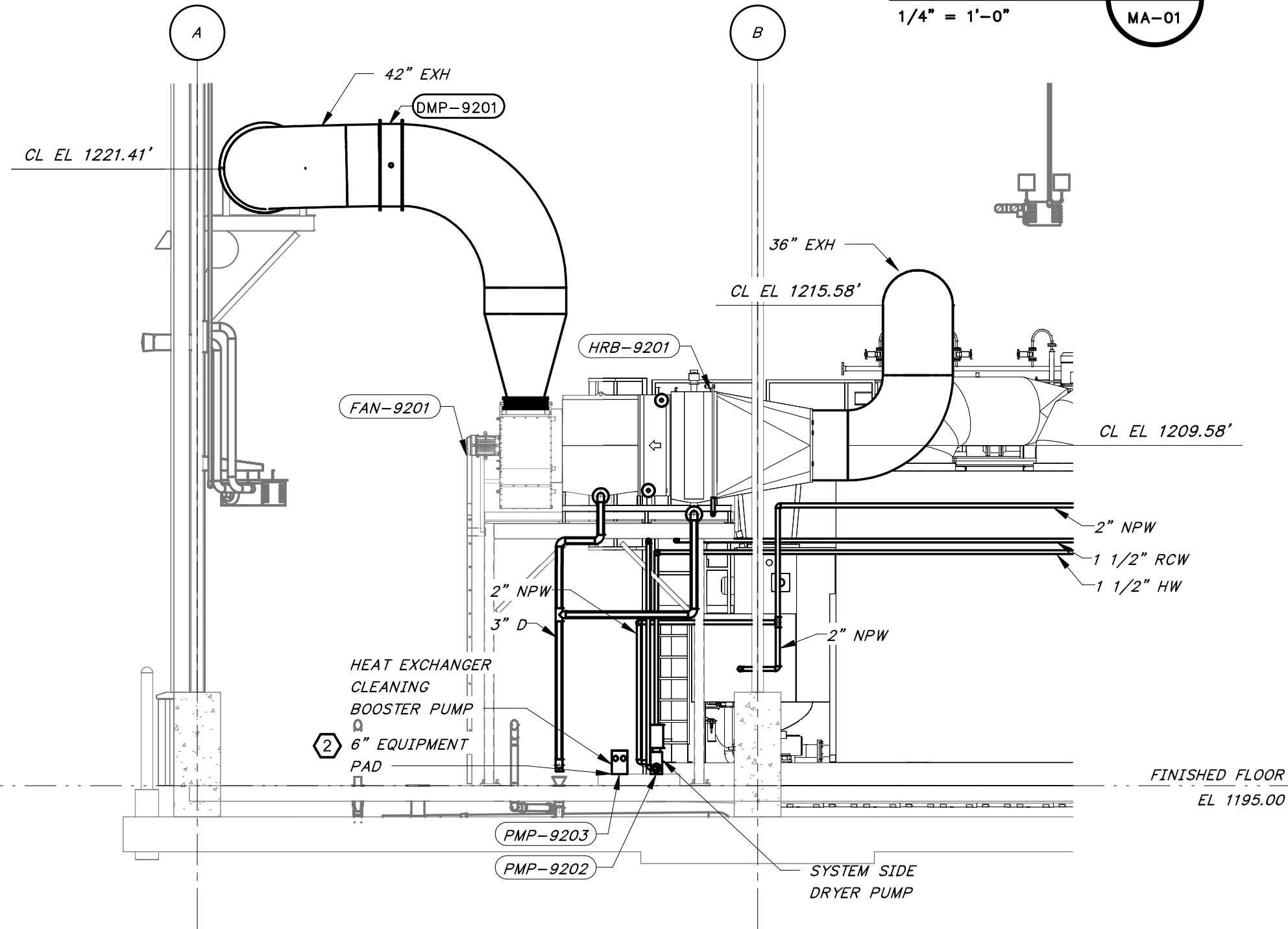
SECTION 1  
3/16" = 1'-0"  
MA-01



SECTION 2  
1/4" = 1'-0"  
MA-01



SECTION 3  
3/8" = 1'-0"  
MA-01



SECTION 4  
3/16" = 1'-0"  
MA-01

GENERAL SHEET NOTES:

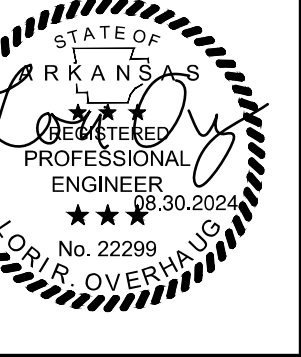
- SEE PROCESS FLOW DIAGRAMS FOR EQUIPMENT SUPPLIED BY THE THERMAL SLUDGE DRYING SYSTEM SUPPLIER.
- CONTRACTOR SHALL PROVIDE INSULATION FOR THERMAL DRYER WATER PIPING, INCLUDING HWS, HWR, AND AIR SYSTEMS.

KEYNOTES:

- ENGINEER'S CONCEPTUAL DESIGN. SCREW CONVEYOR SUPPORTS TO BE PROVIDED BY SCREW CONVEYOR SUPPLIER.
- SEE SHET NO. SA-05 AND SA-06 FOR EQUIPMENT SUPPORT DETAILS.

1"  
ONE INCH AT FULL SIZE IF NOT ONE INCH SCALE ACCORDINGLY

DATE	REVISION



**HAWKINS WEIR ENGINEERS, INC.**  
BLACK & VEATCH

ROGERS, ARKANSAS  
ROGERS POLLUTION CONTROL FACILITY (PCF)  
SOLIDS HANDLING IMPROVEMENTS, PHASE II  
DRYER BUILDING SECTIONS  
FOR: ROGERS WATER UTILITIES

DATE: AUGUST 2024  
SCALE: AS SHOWN  
DESIGNED BY: KJU/MNH  
DRAWN BY: JCD  
HWEI NO.: 2020043  
FILENAME:

SHEET NO.  
**MA-08**

