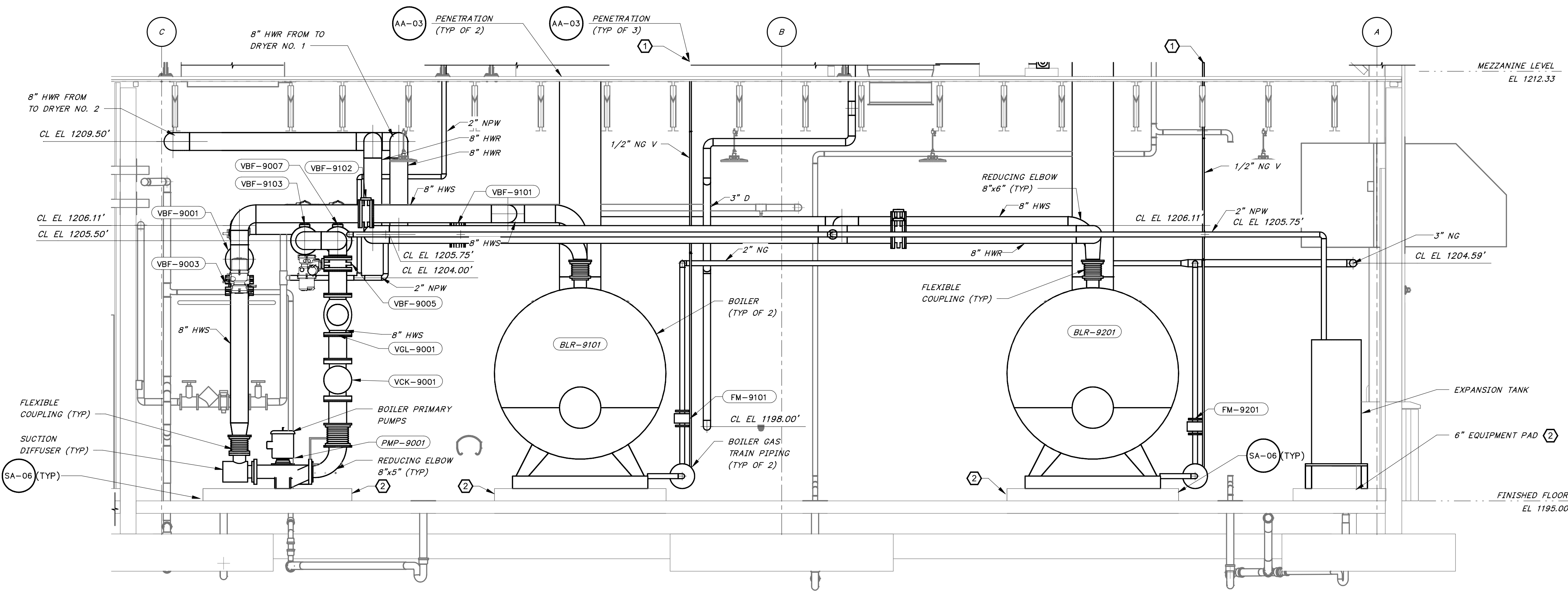
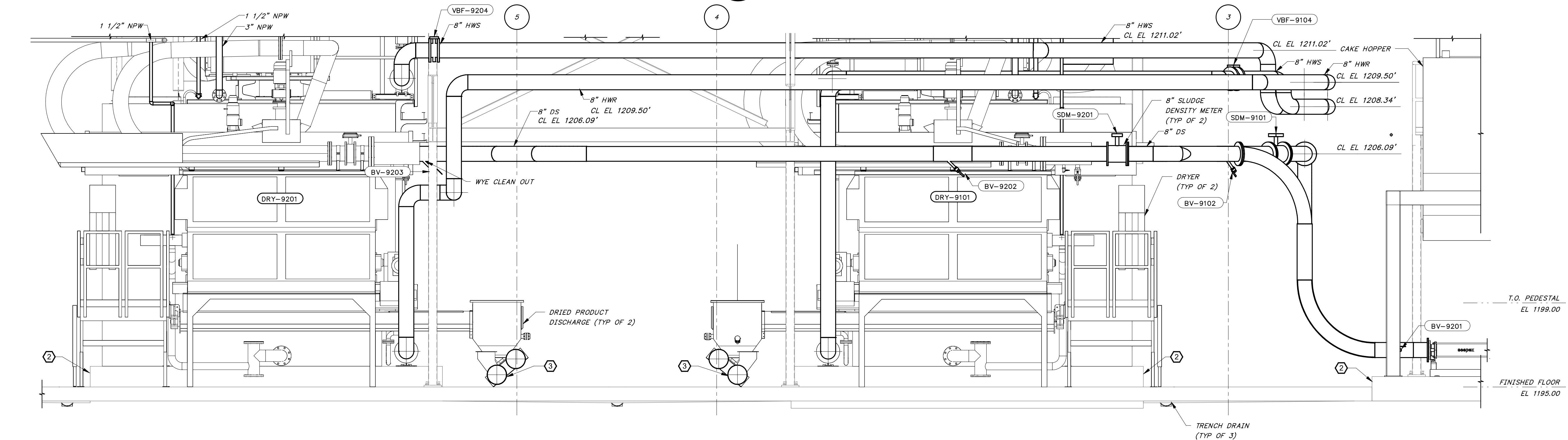


8/27/2024 9:18:07 AM / JCD / DRYER BUILDING SECTIONS

Autodesk Docs: //406493 - Rogers PCF Solids Phase 2/406493-Solids Building-BV.rvt



SECTION 1
3/8" = 1'-0"



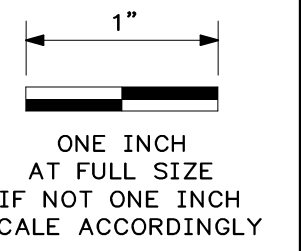
SECTION 2
3/8" = 1'-0"

GENERAL SHEET NOTES:

- SEE PROCESS FLOW DIAGRAMS FOR EQUIPMENT SUPPLIED BY THE THERMAL SLUDGE DRYING SYSTEM SUPPLIER.
- CONTRACTOR SHALL PROVIDE INSULATION FOR THERMAL DRYER WATER PIPING, INCLUDING HWS, HWR, AND AIR SYSTEMS.

KEYED NOTES:

- CONTRACTOR TO FIELD ROUTE GAS TRAIN VENTS TO THE ROOF.
- SEE SHEET NO. SA-05 AND SA-06 FOR EQUIPMENT SUPPORT DETAILS
- CONTRACTOR TO COORDINATE CONNECTION BETWEEN THERMAL SLUDGE DRYING SYSTEM SUPPLIER AND TUBULAR DRAG CHAIN CONVEYOR.



DATE	REVISION



HAWKINS-WEIR ENGINEERS, INC.
BLACK & VEATCH

ROGERS, ARKANSAS
ROGERS POLLUTION CONTROL FACILITY (PCF)
SOLIDS HANDLING IMPROVEMENTS, PHASE II
DRYER BUILDING SECTIONS
FOR: ROGERS WATER UTILITIES

DATE: AUGUST 2024
SCALE: 3/8" = 1'-0"
DESIGNED BY: KJJ/MNH
DRAWN BY: JCD
HWET NO.: 2020043
FILENAME:

SHEET NO.
MA-07

