

8/27/2024 11:06:21 AM / RLG / DRYER BUILDING

Autodesk Docs://406493 - Rogers PCF Solids Phase 2/406493-Solids Building-BV.rvt

SHEET KEYNOTES

1. PROVIDE 30"x30" HINGED, INSULATED ACCESS DOORS AT DUCT AS INDICATED. ACCESS DOORS SHALL BE EQUAL TO RUSKIN ADH22 WITH 20 GAUGE, DOUBLE WALL CONSTRUCTION AND 1" FIBERGLASS INSULATION. DOORS TO INCLUDE A CONTINUOUS STAINLESS STEEL PIANO HINGE, FOUR (4) STAINLESS STEEL CAM LOCK AND CONTINUOUS FOAM SEAL.

DATE	
REVISION	



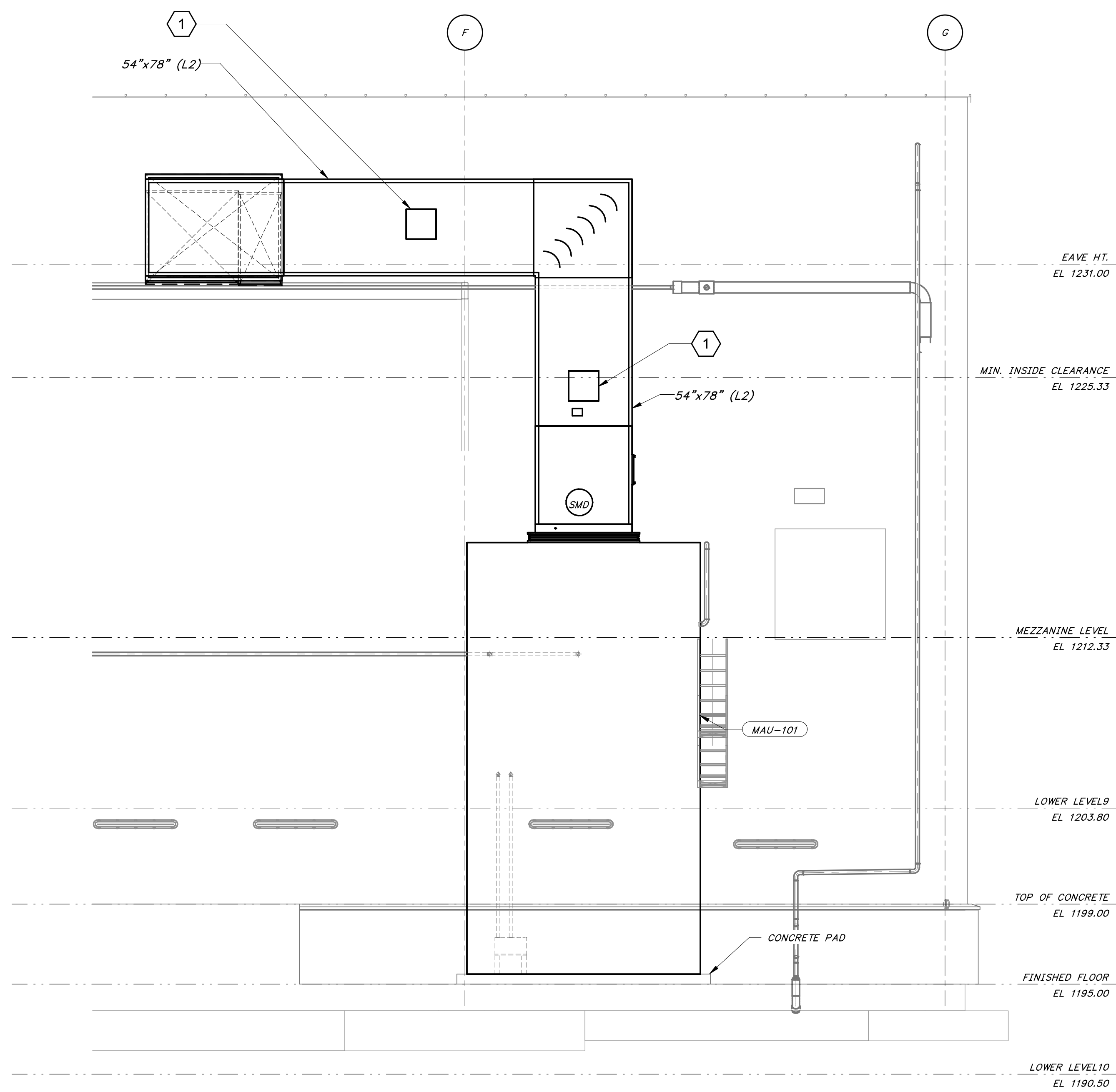
HAWKINS WEIR ENGINEERS, INC.

BLACK & VEATCH

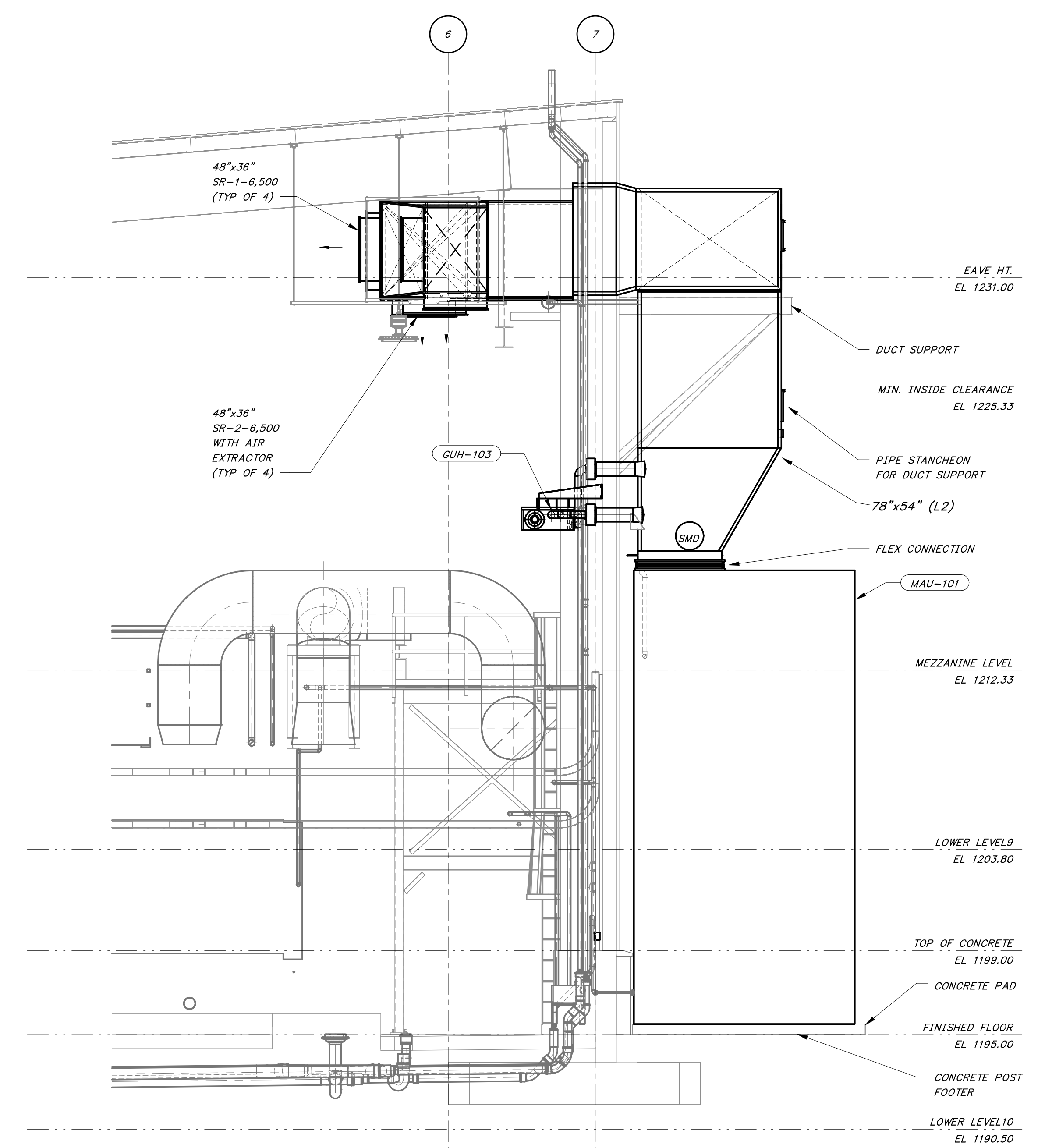
ROGERS, ARKANSAS
 ROGERS POLLUTION CONTROL FACILITY (PCF)
 SOLIDS HANDLING IMPROVEMENTS, PHASE II
 DRYER BUILDING
 HVAC SECTIONS
 FOR: ROGERS WATER UTILITIES

DATE: AUGUST 2024
 SCALE: 1/4" = 1'-0"
 DESIGNED BY: APC
 DRAWN BY: RLG
 HWEI NO.: 2020043
 FILENAME:

SHEET NO.
HA-06



1 DRYER ROOM SECTION - EAST
 HA-03 1/4" = 1'-0"



2 DRYER ROOM SECTION - SOUTH
 HA-03 1/4" = 1'-0"

