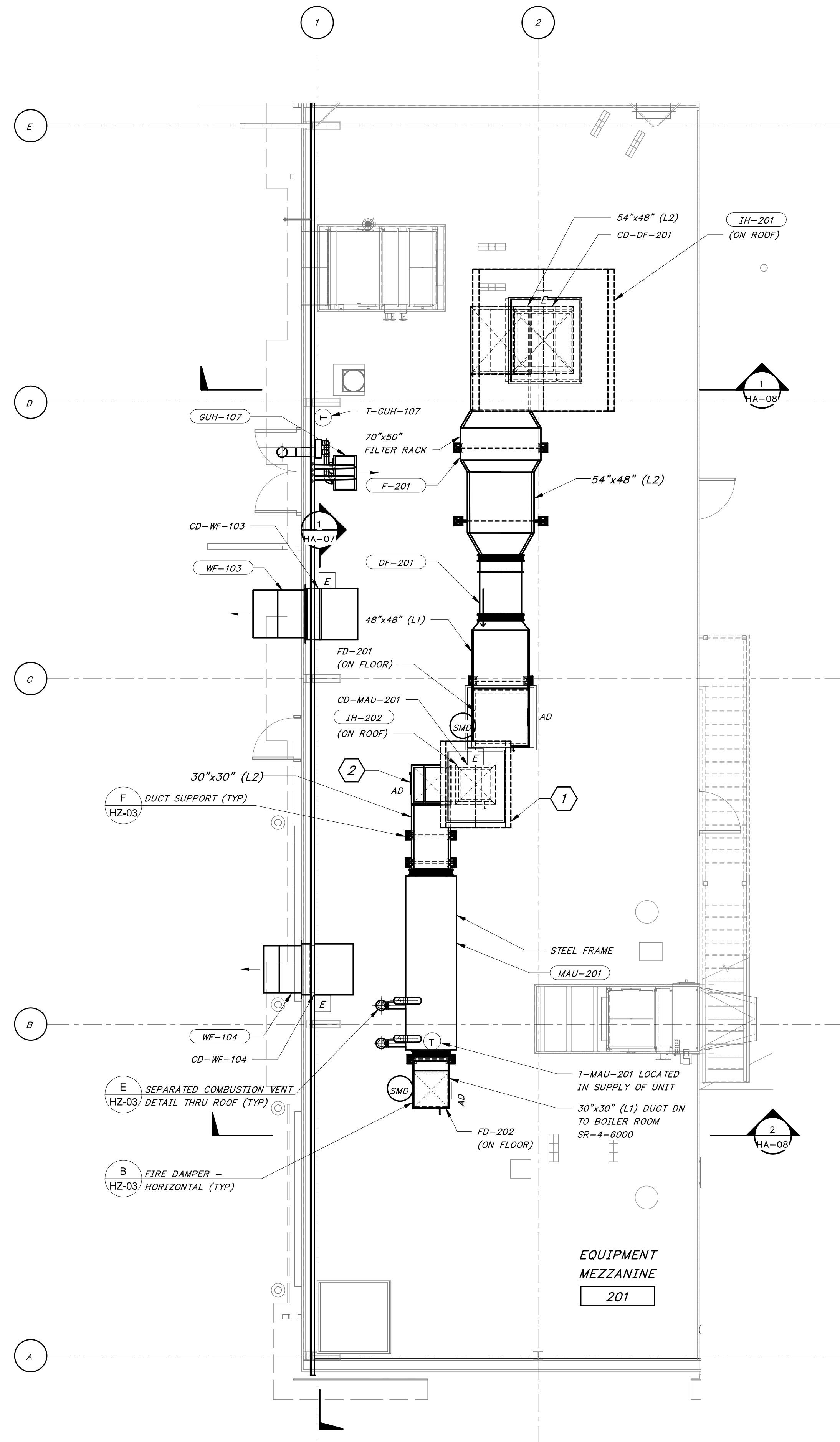


8/27/2024 9:29:59 AM / RLG / DRYER BUILDING

Autodesk Docs://406493 - Rogers PCF Solids Phase 2/406493-Solids Building-BV.rvt



MEZZANINE LEVEL - HVAC PLAN

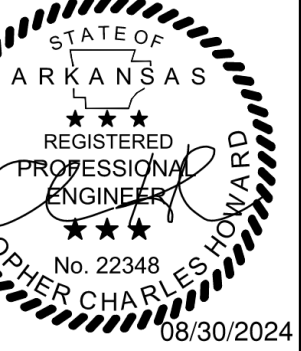
3/16" = 1'-0"

SHEET KEYNOTES

1. IH-202 SHALL BE MOUNTED AT LEAST 10 FEET AWAY FROM GAS FLUE AND MAU COMBUSUTION FLUES ON ROOF.
2. PROVIDE 30"x30" HINGED, INSULATED ACCESS DOORS AT DUCT AS INDICATED. ACCESS DOORS SHALL BE EQUAL TO RUSKIN ADH22 WITH 20 GAUGE, DOUBLE WALL CONSTRUCTION AND 1" FIBERGLASS INSULATION. DOORS TO INCLUDE A CONTINUOUS STAINLESS STEEL PIANO HINGE, FOUR (4) STAINLESS STEEL CAM LOCK AND CONTINUOUS FOAM SEAL.

ONE INCH AT FULL SIZE IF NOT ONE INCH SCALE ACCORDINGLY

DATE	REVISION



HAWKINS WEIR ENGINEERS, INC.
BLACK & VEATCH

ROGERS, ARKANSAS
 ROGERS POLLUTION CONTROL FACILITY (PCF)
 SOLIDS HANDLING IMPROVEMENTS, PHASE II
 ENLARGED HVAC MEZZANINE LEVEL PLAN
 FOR: ROGERS WATER UTILITIES

DATE: AUGUST 2024
 SCALE: 3/16" = 1'-0"
 DESIGNED BY: APC
 DRAWN BY: RLG
 HWEI NO.: 2020043
 FILENAME:

SHEET NO. HA-04

