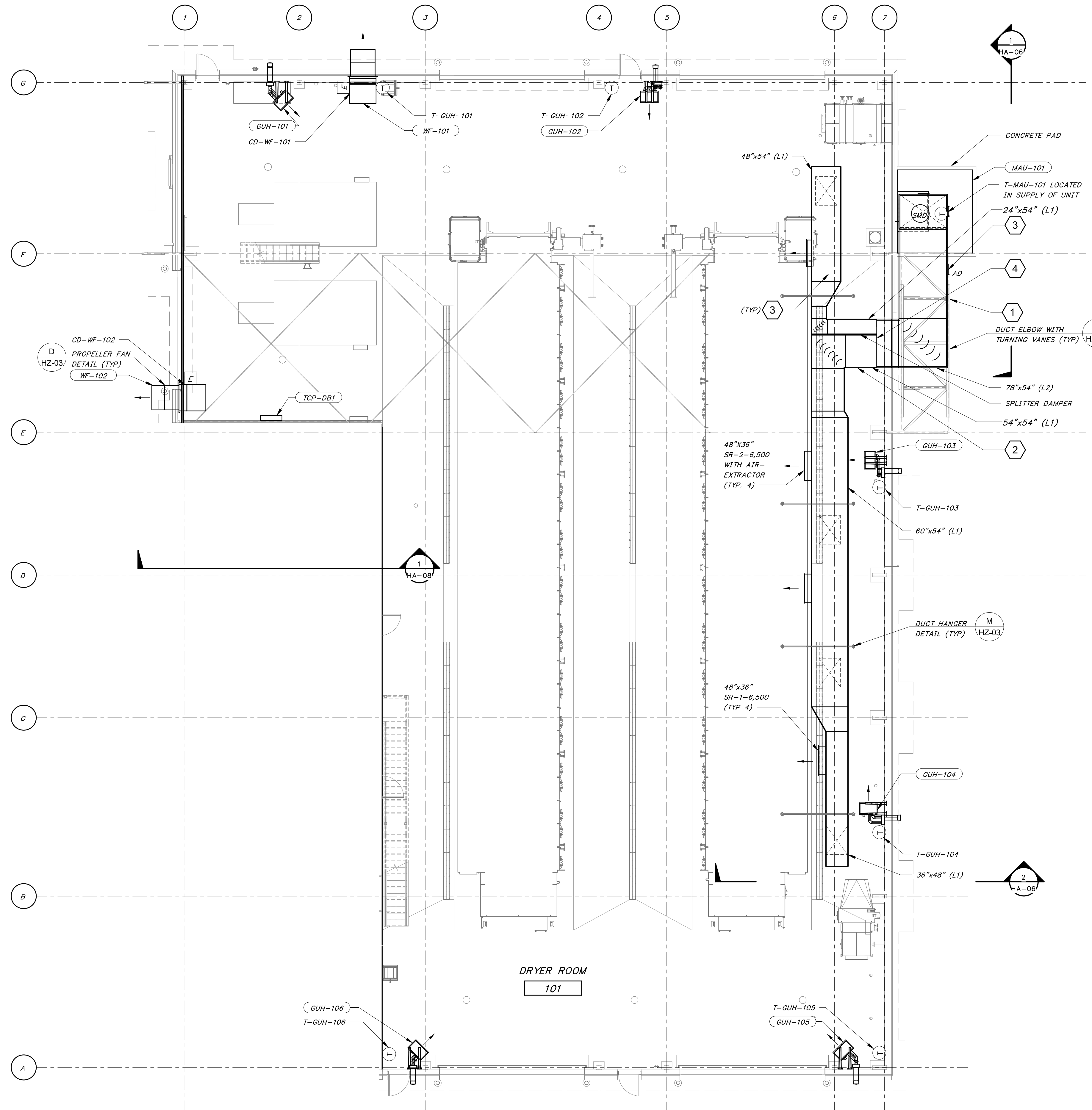


8/27/2024 11:06:07 AM / RLG / DRYER BUILDING

Autodesk Docs: //406493 - Rogers PCF Solids Phase 2/406493-Solids Building-BV.rvt

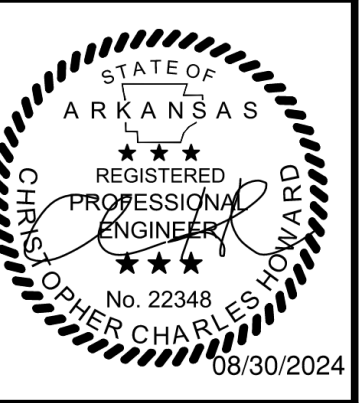


DRYER ROOM - HVAC PLAN  
1/8" = 1'-0"

8' 4' 0' 8' 16'  
1/8" = 1'-0"

- SHEET KEYNOTES**
- COORDINATE DUCT PENETRATION WITH STRUCTURAL CROSS BEAM OPENING.
  - CONTRACTOR TO PROVIDE NESTED FITTING WITH TURNING VANES OR BULLHEAD TEE WITH RADIUS THROAT AND HEELS.
  - PROVIDE 30"x30" HINGED, INSULATED ACCESS DOORS AT DUCT AS INDICATED. ACCESS DOORS SHALL BE EQUAL TO RUSKIN ADH22 WITH 20 GAUGE, DOUBLE WALL CONSTRUCTION AND 1" FIBERGLASS INSULATION. DOORS TO INCLUDE A CONTINUOUS STAINLESS STEEL PIANO HINGE, FOUR (4) STAINLESS STEEL CAM LOCKS AND CONTINUOUS FOAM SEAL.
  - PROVIDED ROUNDED DUCT AT SPLITTER JOINT.

DATE	
REVISION	



**HAWKINS WEIR ENGINEERS, INC.**  
**BLACK & VEATCH**

ROGERS, ARKANSAS  
 ROGERS POLLUTION CONTROL FACILITY (PCF)  
 SOLIDS HANDLING IMPROVEMENTS, PHASE II  
 DRYER BUILDING  
 ENLARGED HVAC FLOOR PLAN  
 FOR: ROGERS WATER UTILITIES

DATE: AUGUST 2024  
 SCALE: 1/8" = 1'-0"  
 DESIGNED BY: APC  
 DRAWN BY: RLG  
 HWEL NO.: 2020043  
 FILENAME:

SHEET NO.  
**HA-03**