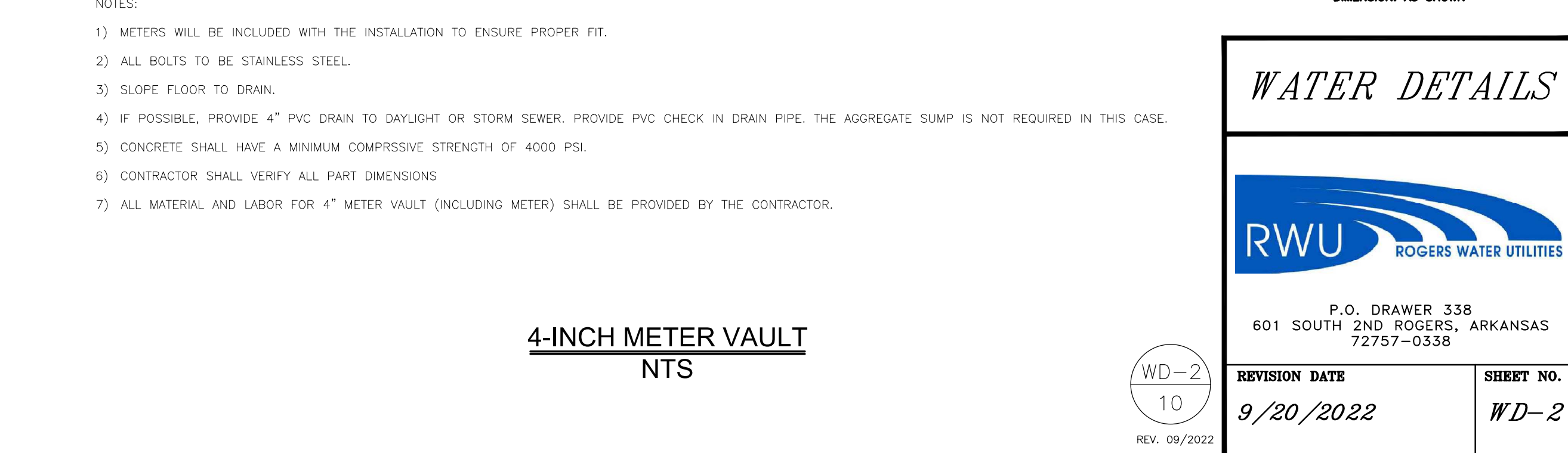
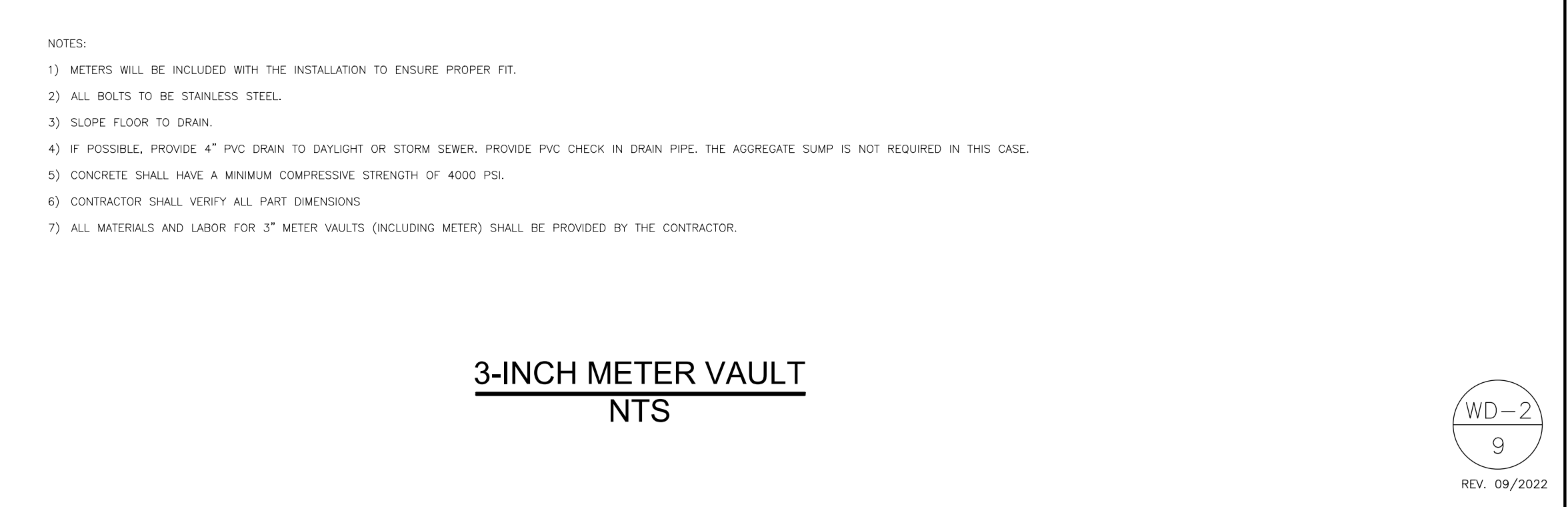
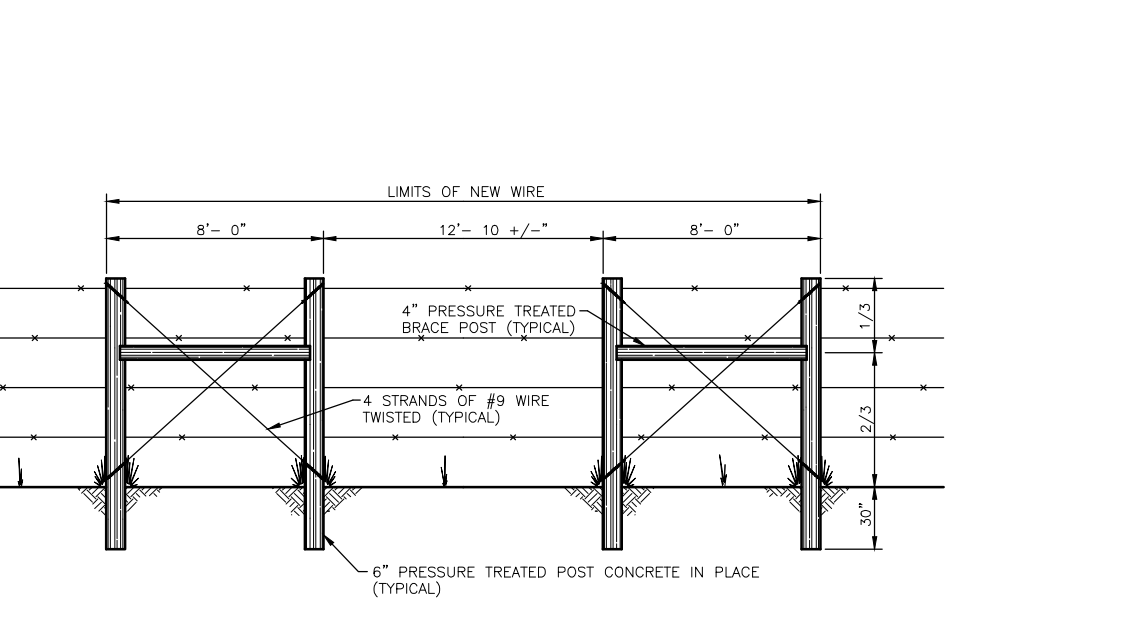
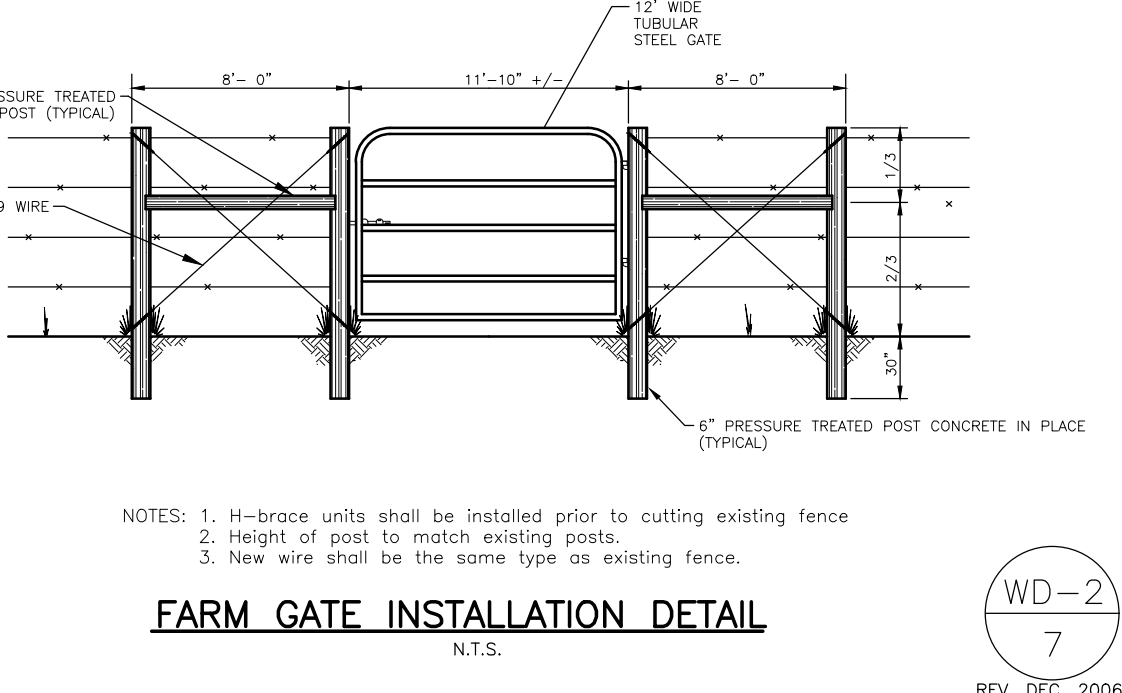
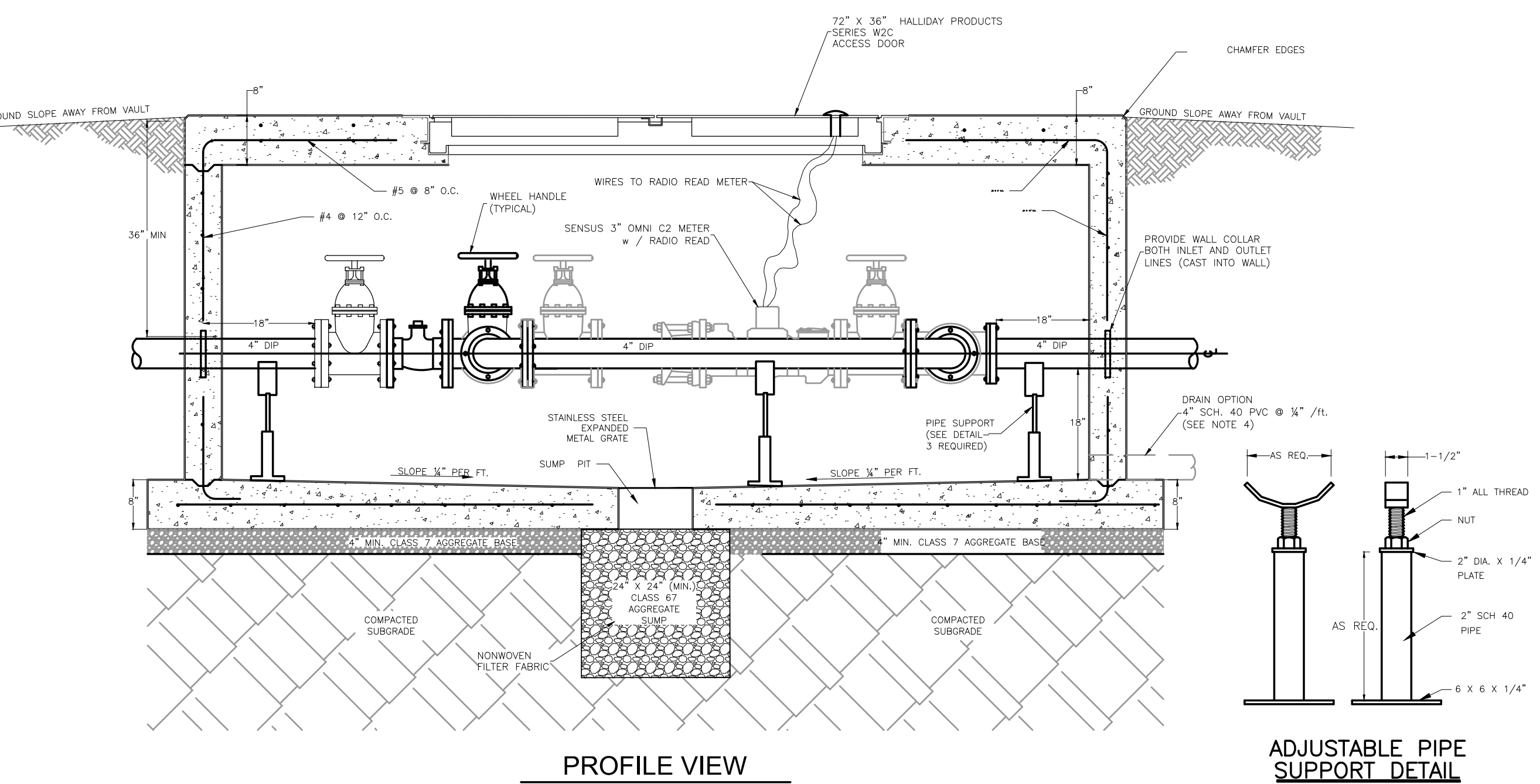
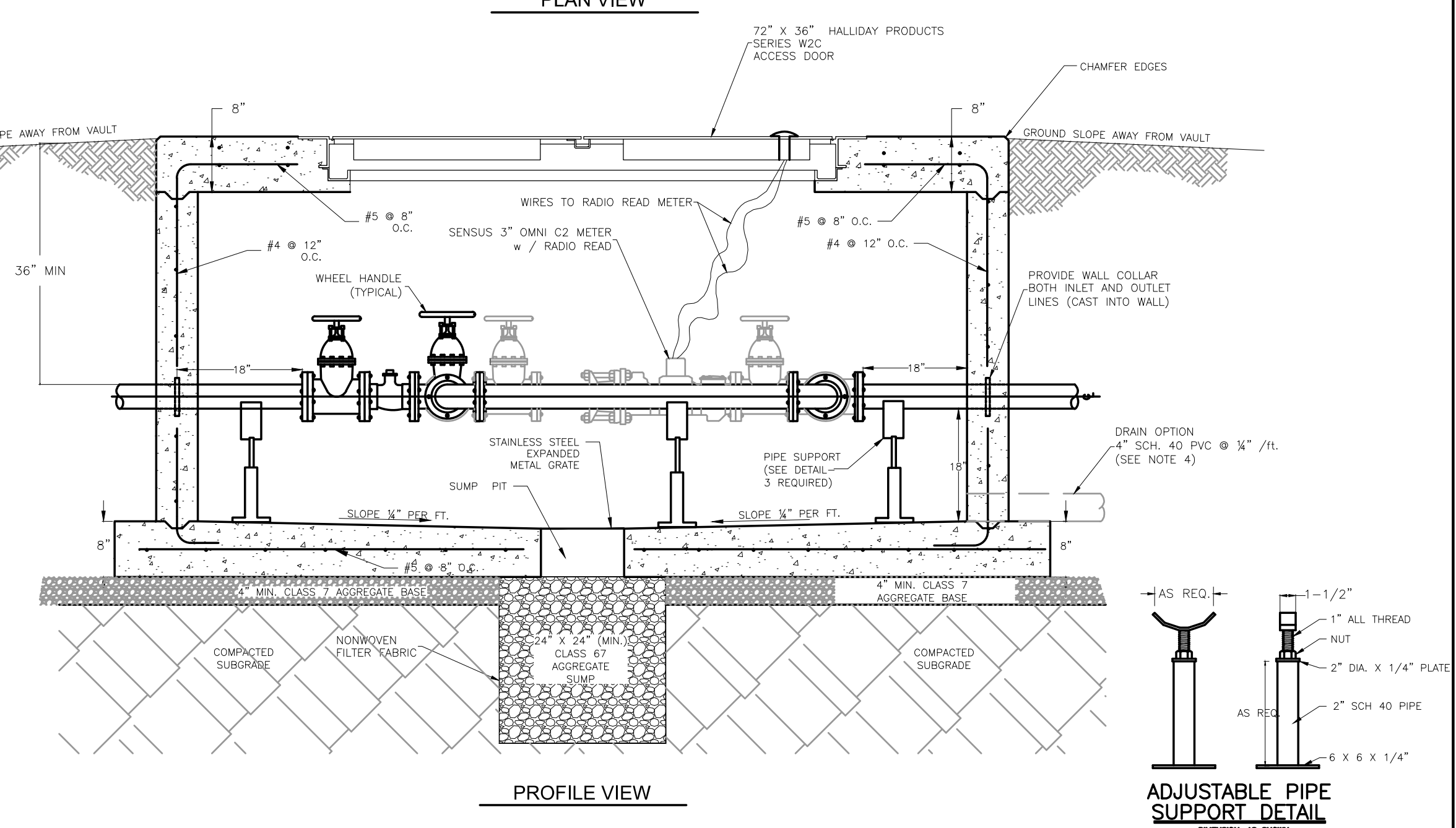
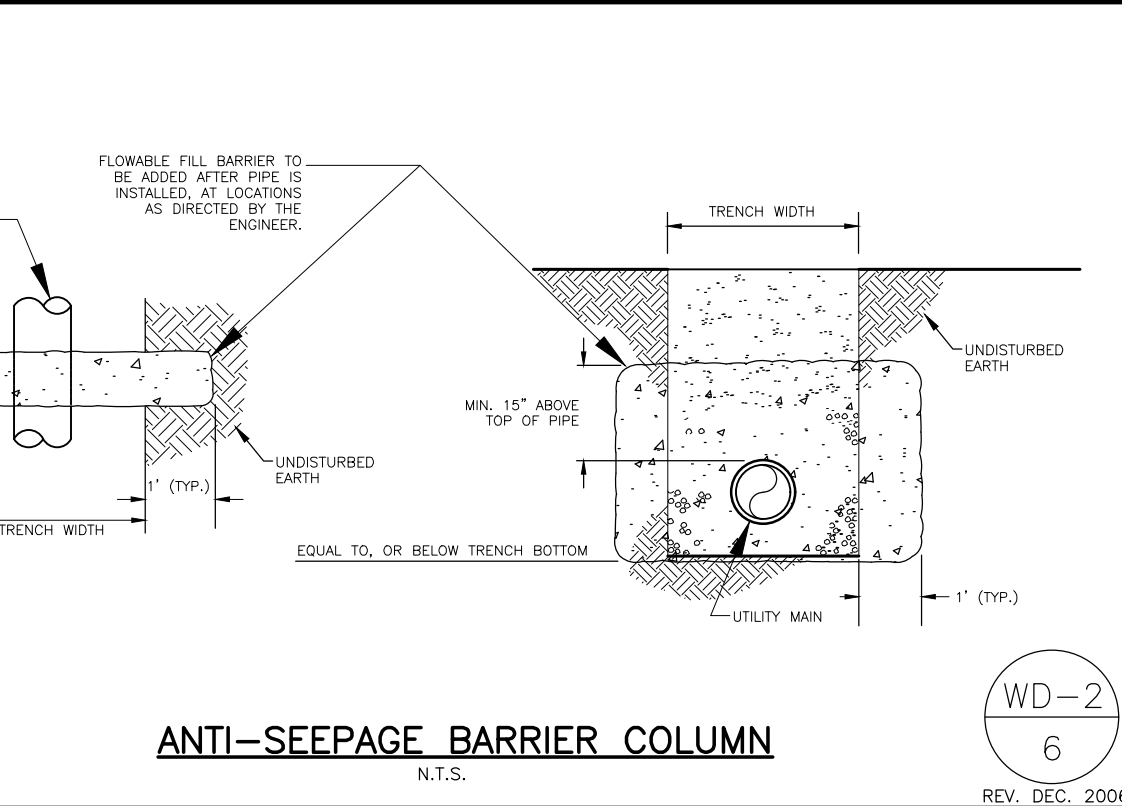
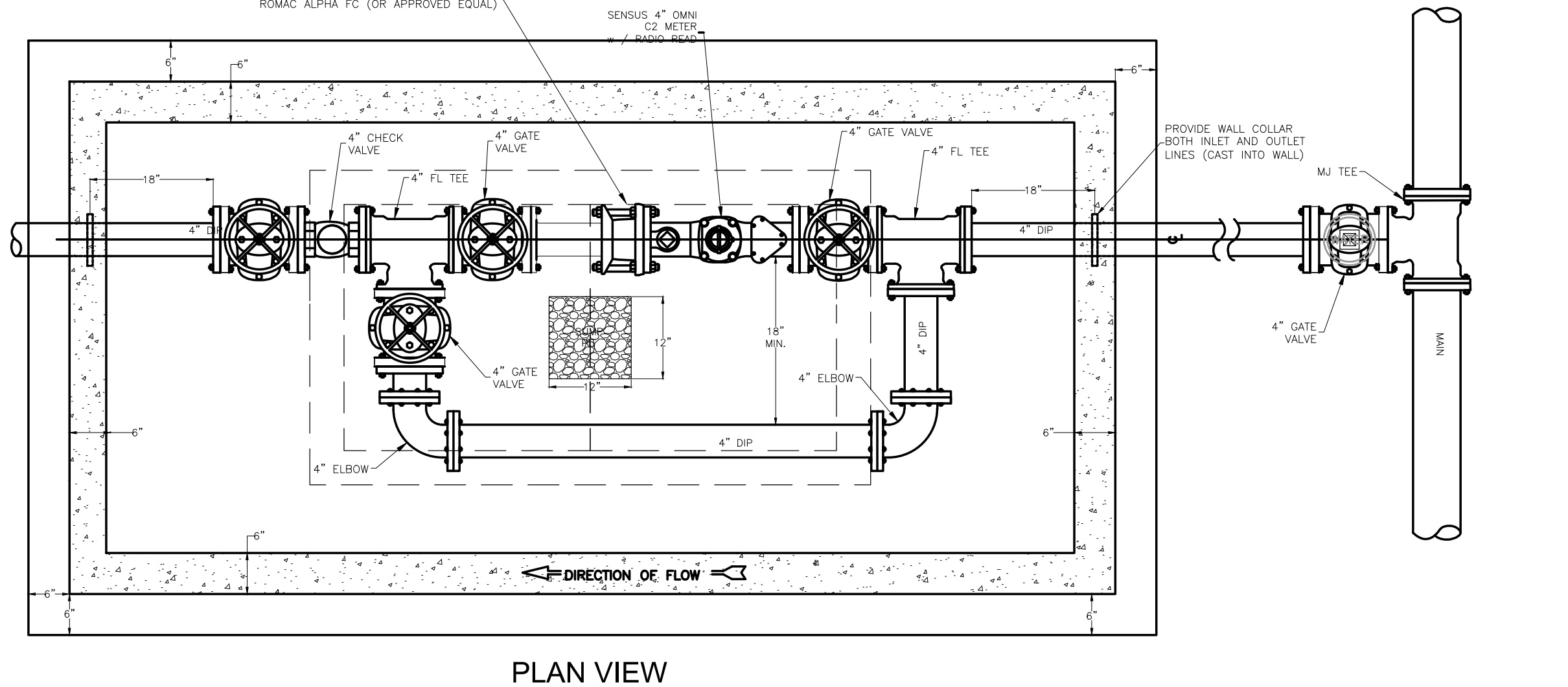
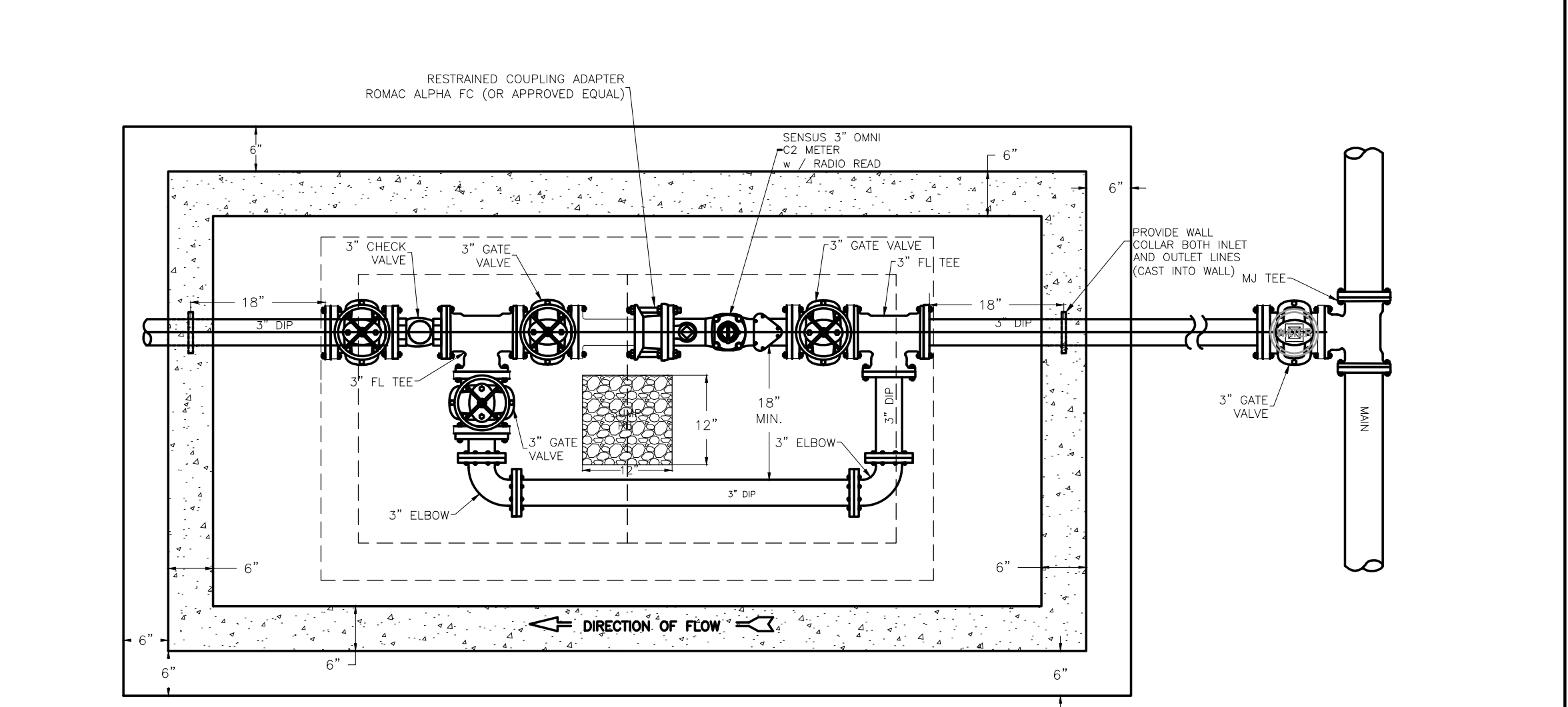
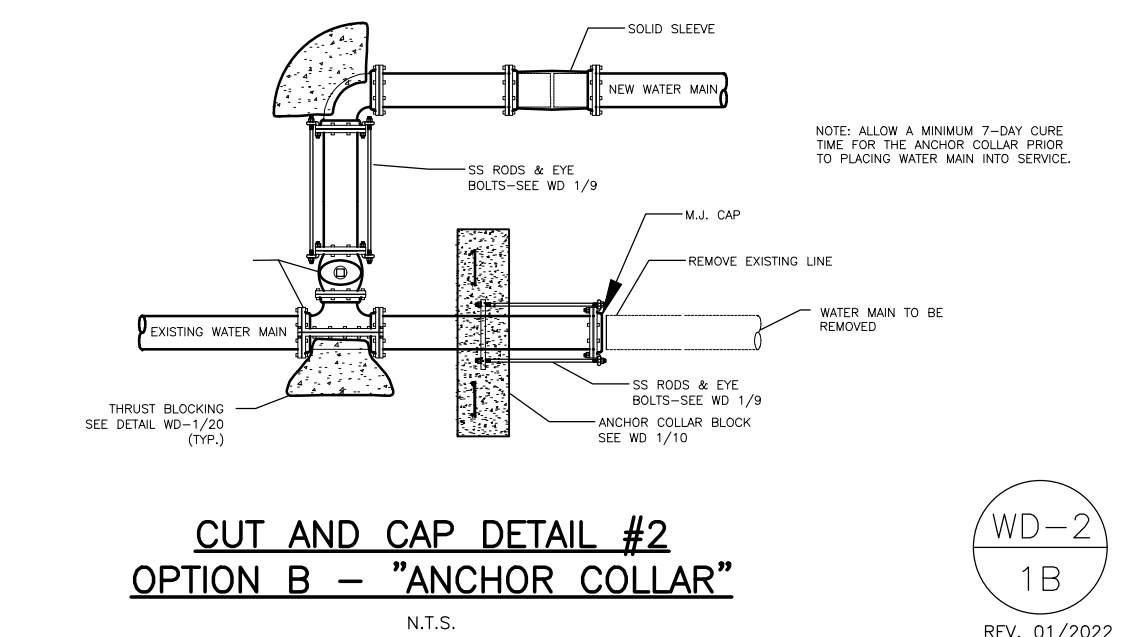


RESERVED

WD-2  
5  
REV. 12/2021



**WATER DETAILS**



P.O. DRAWER 338  
601 SOUTH 2ND ROGERS, ARKANSAS  
72757-0338

REVISION DATE  
**9/20/2022**

SHEET NO.  
**WD-2**

- NOTES:
- METERS WILL BE INCLUDED WITH THE INSTALLATION TO ENSURE PROPER FIT.
  - ALL BOLTS TO BE STAINLESS STEEL.
  - SLOPE FLOOR TO DRAIN.
  - IF POSSIBLE, PROVIDE 4" PVC DRAIN TO DAYLIGHT OR STORM SEWER. PROVIDE PVC CHECK IN DRAIN PIPE. THE AGGREGATE SUMP IS NOT REQUIRED IN THIS CASE.
  - CONCRETE SHALL HAVE A MINIMUM COMPRESSIVE STRENGTH OF 4000 PSI.
  - CONTRACTOR SHALL VERIFY ALL PART DIMENSIONS.
  - ALL MATERIAL AND LABOR FOR 4" METER VAULT (INCLUDING METER) SHALL BE PROVIDED BY THE CONTRACTOR.